



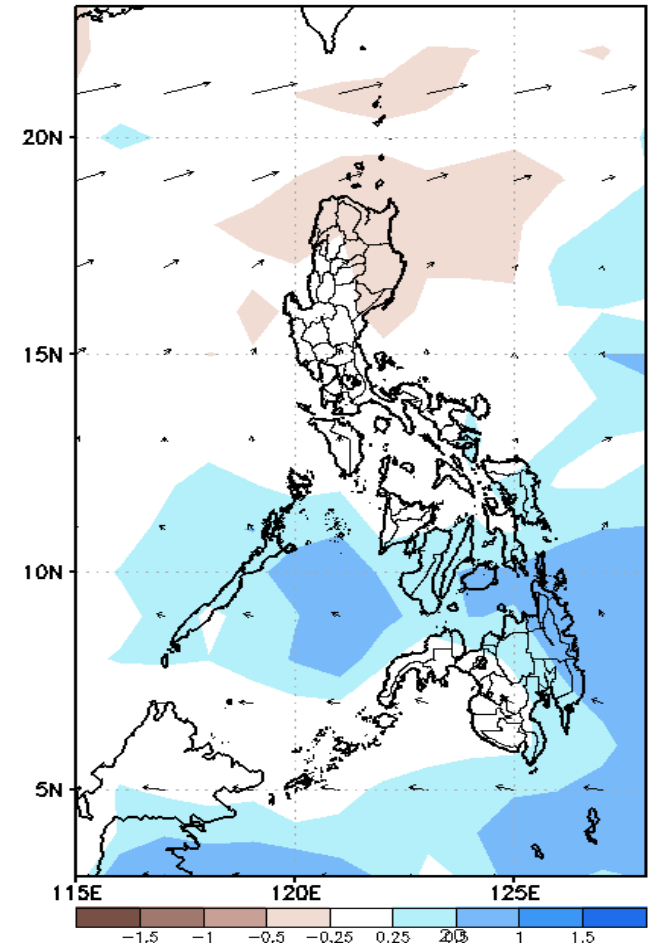
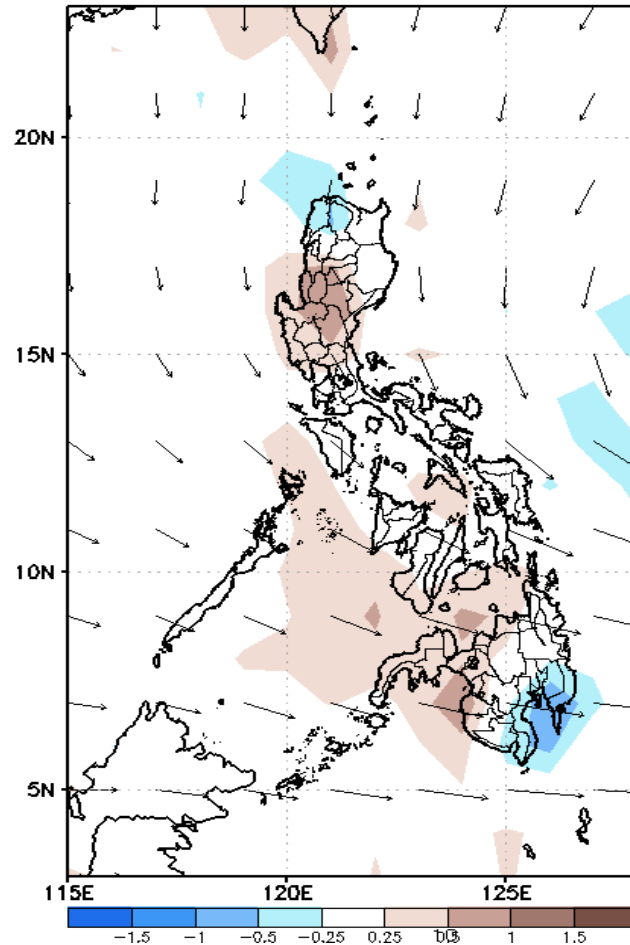
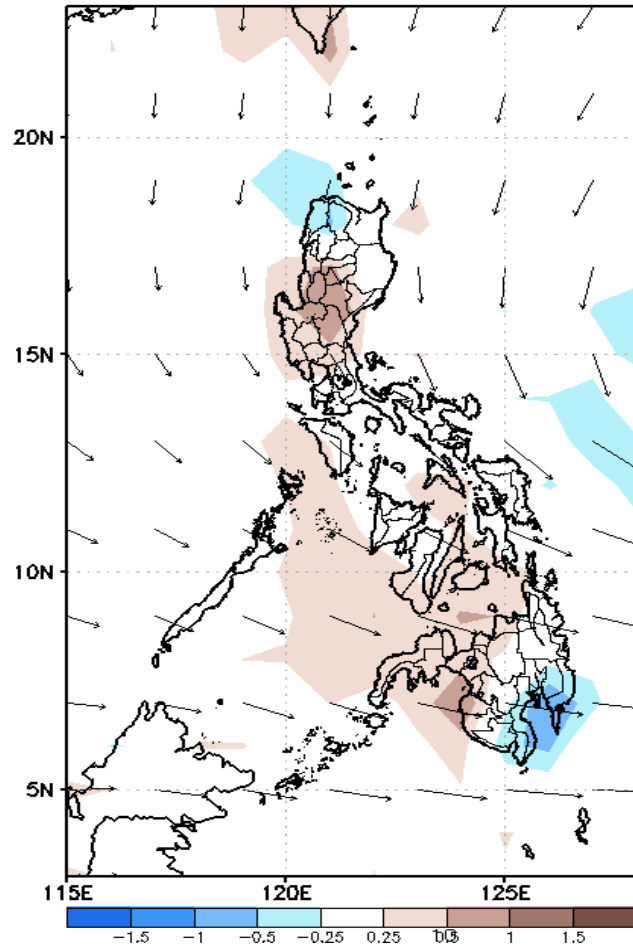
Week 1 & Week 2 Forecast for the Philippines using GEFS Model



GEFS Week-1 Forecasts: Divergence & Wind Anomaly

Week 1: April 15-21, 2021

GEFS Week-1 850-hPa Divergence and Wind Anom
Valid: 20210415 - 20210421

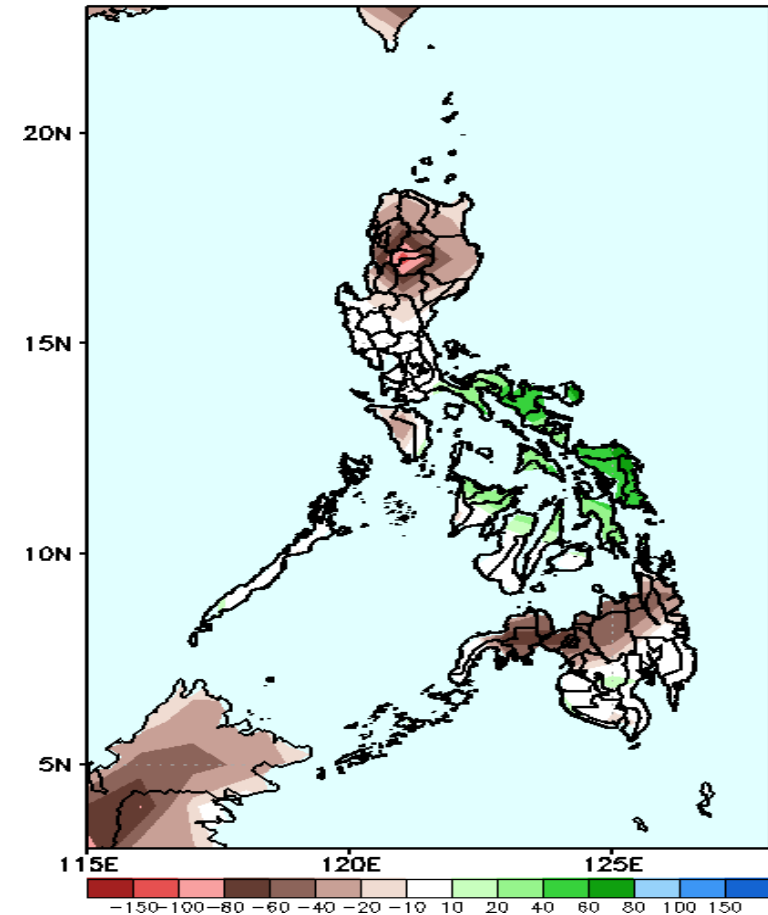


Upper and low level Divergence suggest high likelihood of precipitation in Palawan, Negros provinces, Eastern and Central Visayas, Northern Mindanao and Davao Region. Easterlies affecting most parts of the country attributing to warmer temperature during the forecast period. Meanwhile a cyclonic circulation was observe near Western Philippines.

Precipitation Anomaly and Exceedance Probability > 25/50 mm

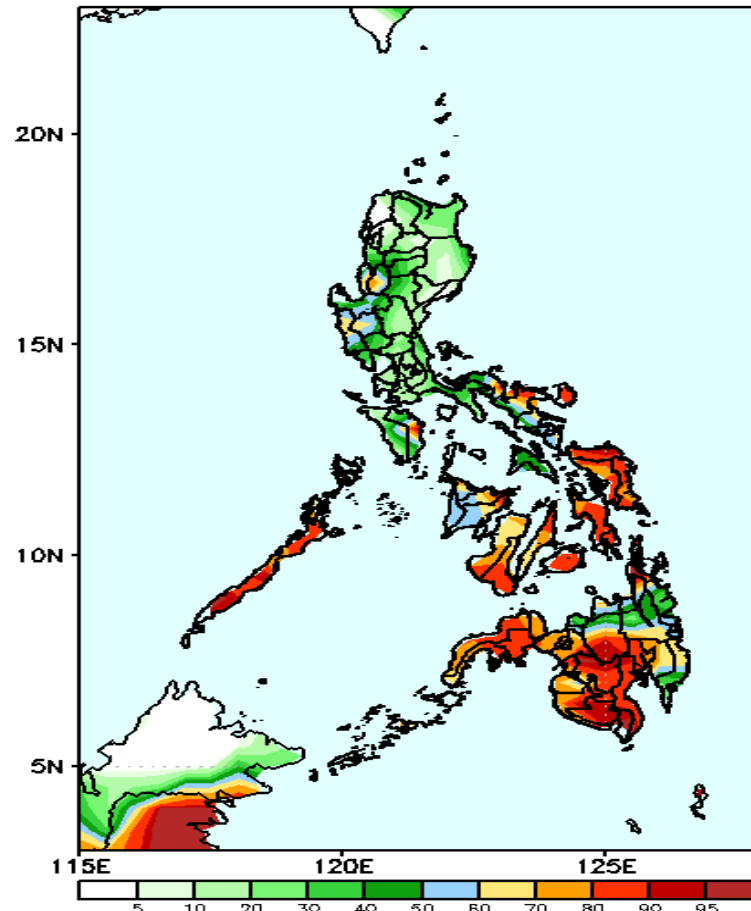
Week 1: April 15-21, 2021

GEFS Week-1 Precip Anomaly
Valid: 20210415 - 20210421



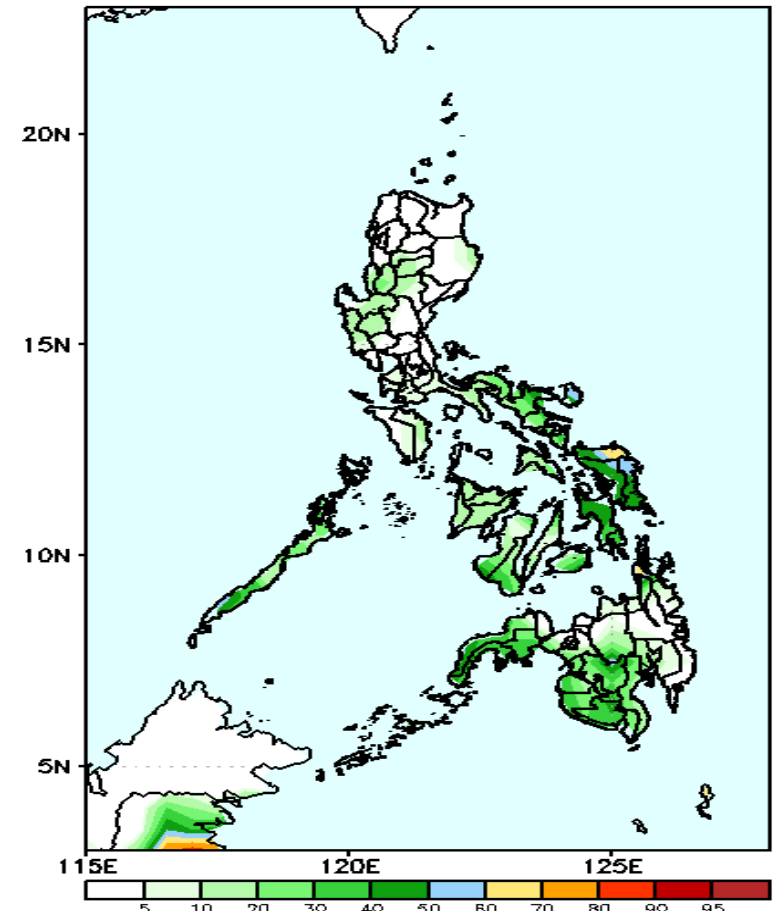
Rainfall deficit of 40-100mm is expected in most parts of Cordillera Region, Cagayan Valley, Region 1 and northern half of Mindanao including Zamboanga Peninsula while increase of rainfall of 40-80mm in most parts of Visayas during the forecast period.

GEFS Week-1 Exceedance Prob. > 25mm
Valid: 20210415 - 20210421



High probability of rainfall to exceed 25mm in most parts of Bicol Region, in Visayas & Mindanao (except Agusan del Sur) while less likely for the rest of the country during the forecast period

GEFS Week-1 Exceedance Prob. > 50mm
Valid: 20210415 - 20210421



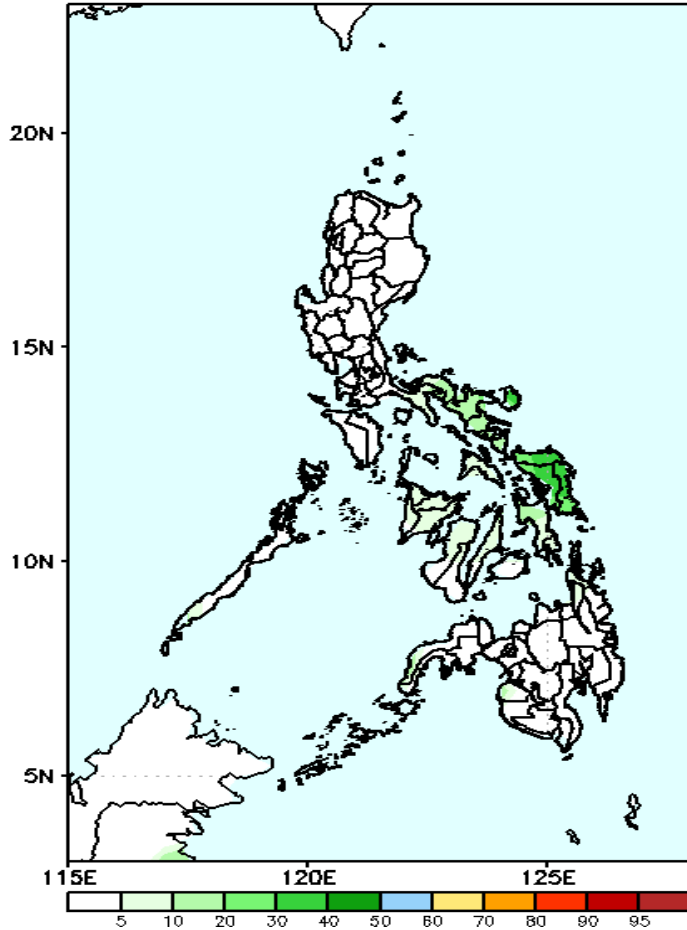
Less probability of rainfall to exceed 50mm in most parts of the country during the forecast



Exceedance Probability > 100/150/200 mm

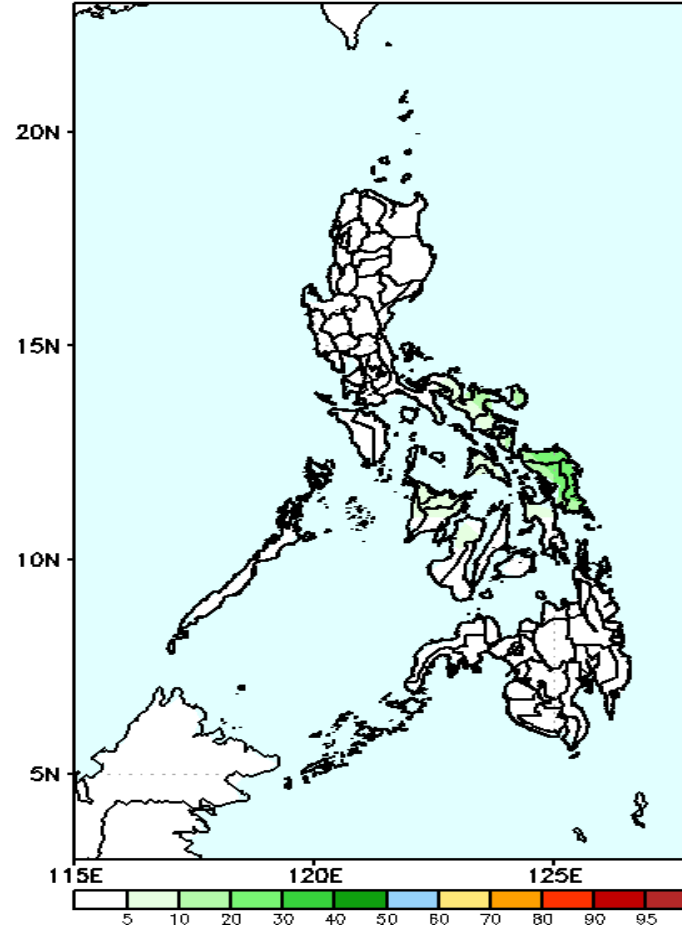
Week 1: April 15-21, 2021

GEFS Week-1 Exceedance Prob. > 100mm
Valid: 20210415 - 20210421



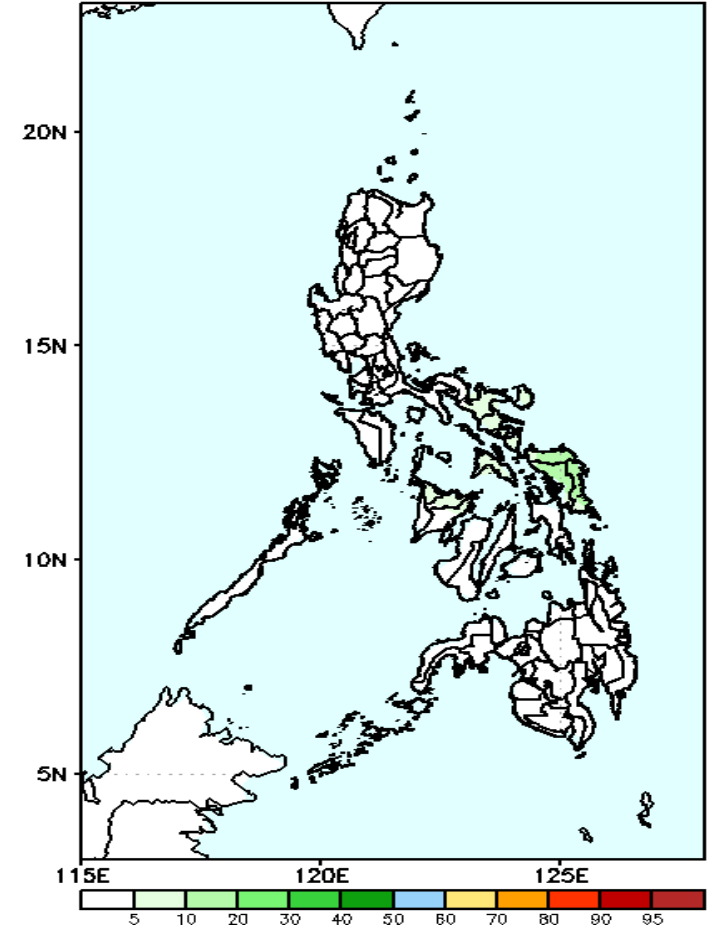
Less probability of rainfall to exceed 100mm in most parts of the country during the forecast period.

GEFS Week-1 Exceedance Prob. > 150mm
Valid: 20210415 - 20210421



Less probability of rainfall to exceed 150mm in most parts of the country during the forecast period.

GEFS Week-1 Exceedance Prob. > 200mm
Valid: 20210415 - 20210421



Less probability of rainfall to exceed 200mm in most parts of the country during the forecast period.



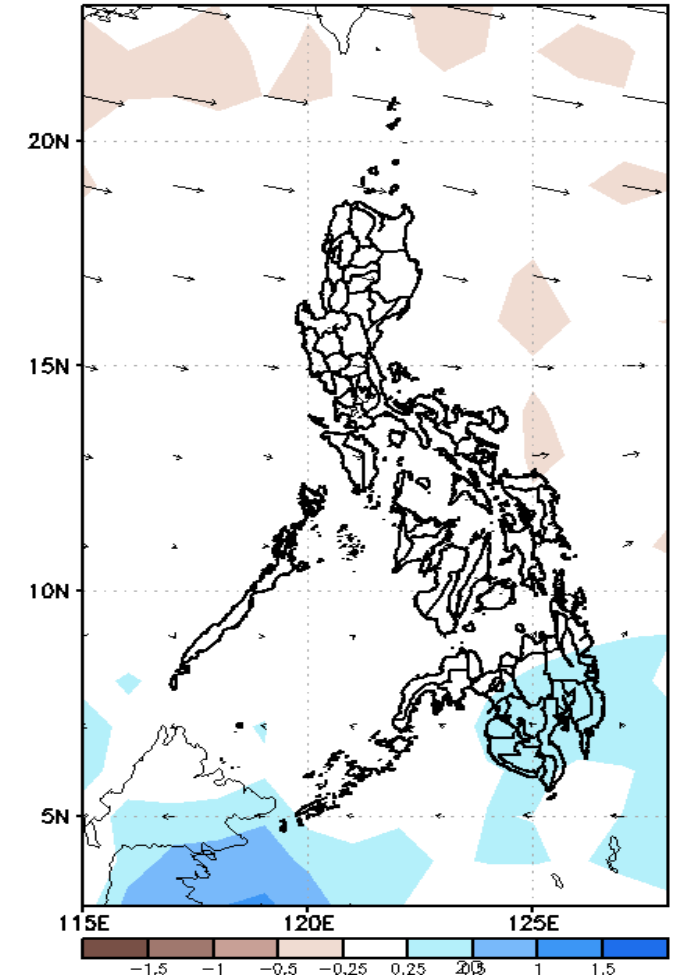
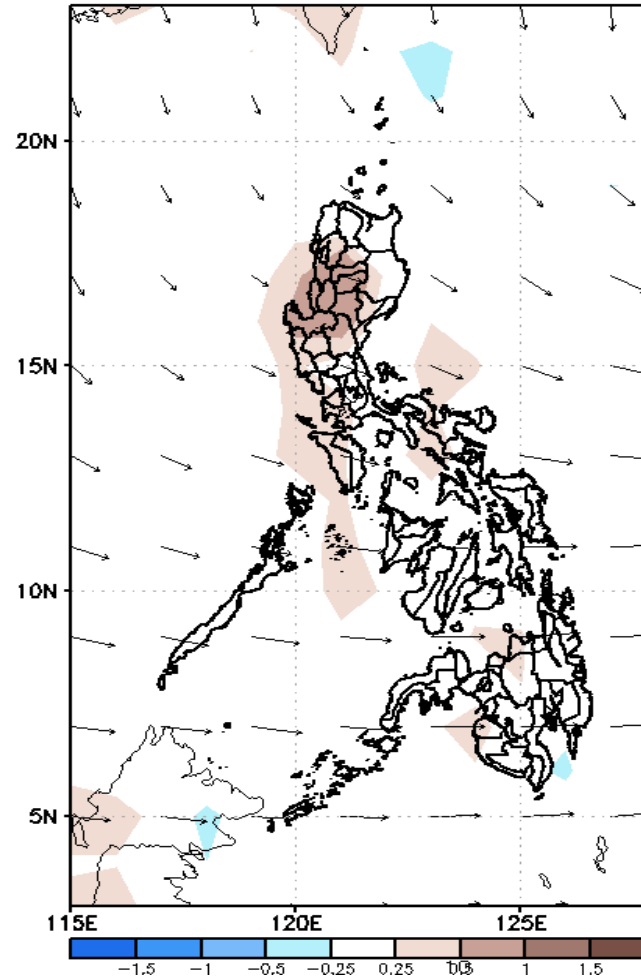
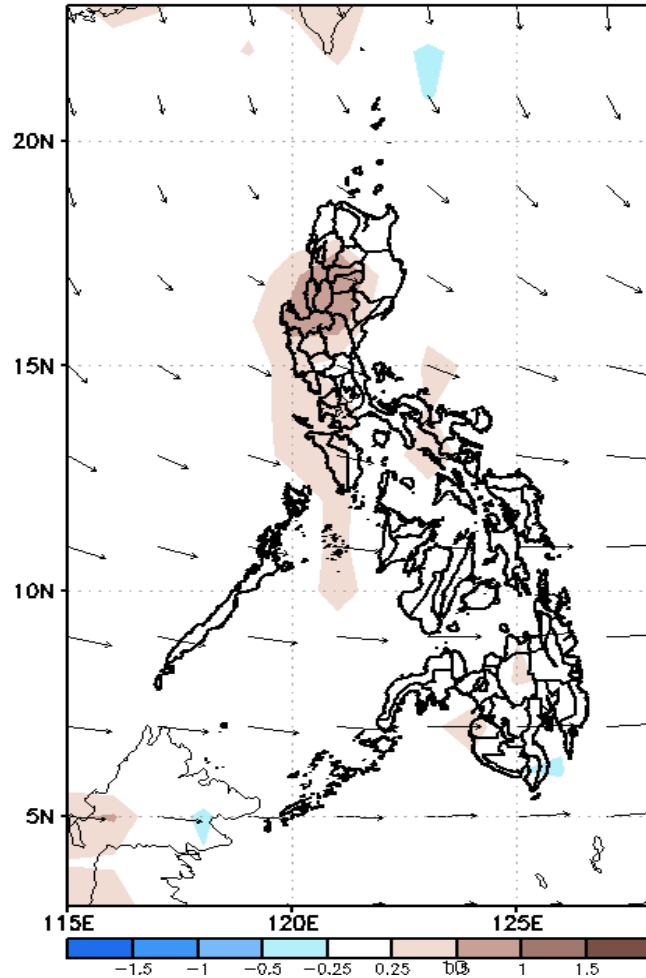
GEFS Week-2 Forecasts: Divergence & Wind Anomaly

Week 2: April 22-28, 2021

GEFS Week-2 850-hPa Divergence and Wind Anom
Valid: 20210422 - 20210428

GEFS Week-2 700-hPa Divergence and Wind Anom
Valid: 20210422 - 20210428

GEFS week-2 200-hPa Divergence and Wind Anom
Valid: 20210422 - 20210428

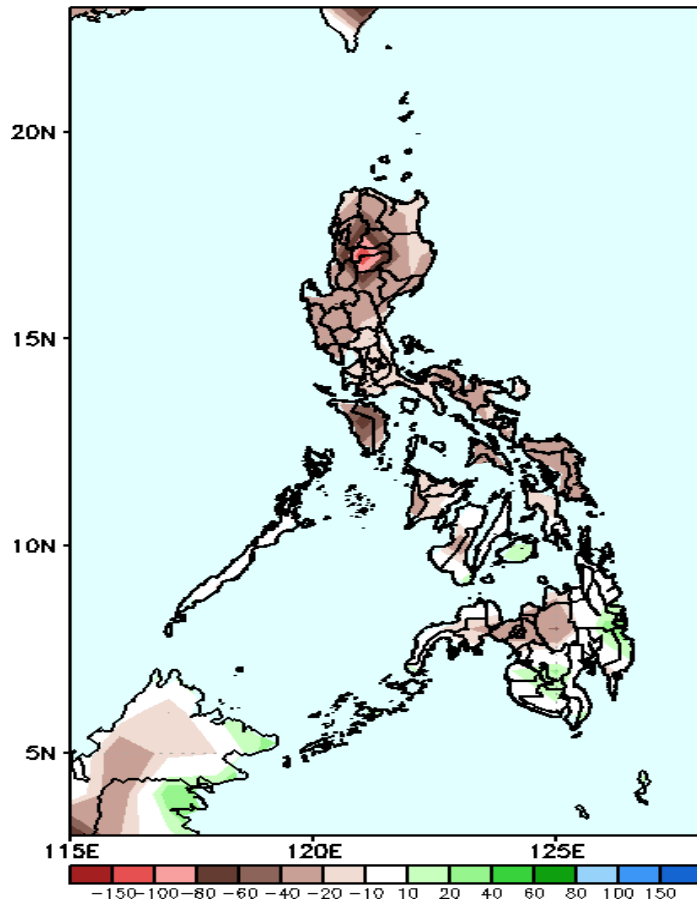


Upper and low level Divergence suggest high likelihood of precipitation in most parts of Mindanao. Easterlies affecting most parts of the country attributing to warmer temperatures during the forecast period.

Precipitation Anomaly and Exceedance Probability > 25/50 mm

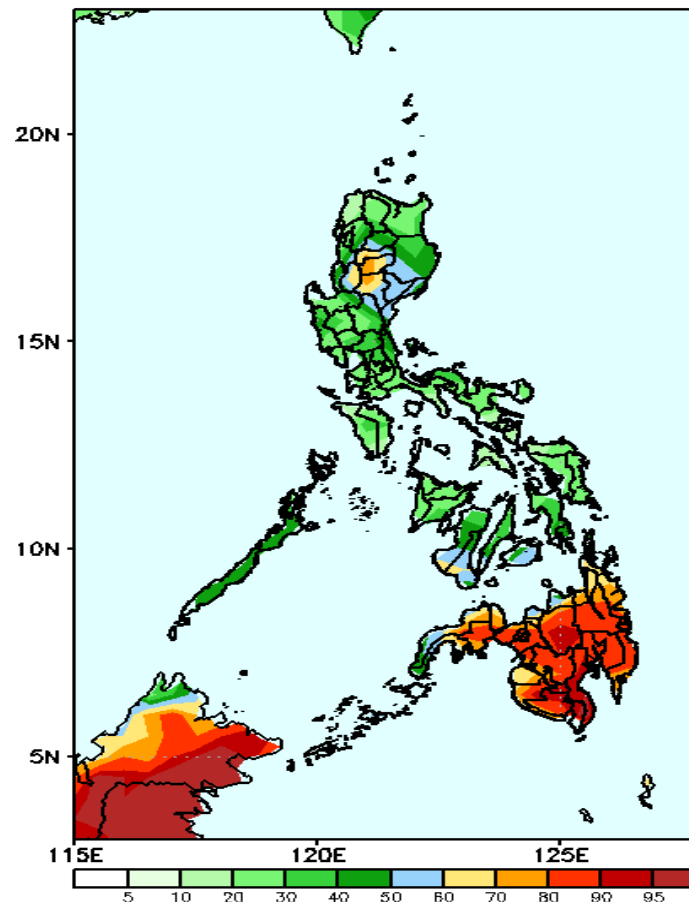
Week 2: April 22-28, 2021

GEFS Week-2 Precip Anomaly
Valid: 20210422 - 20210428



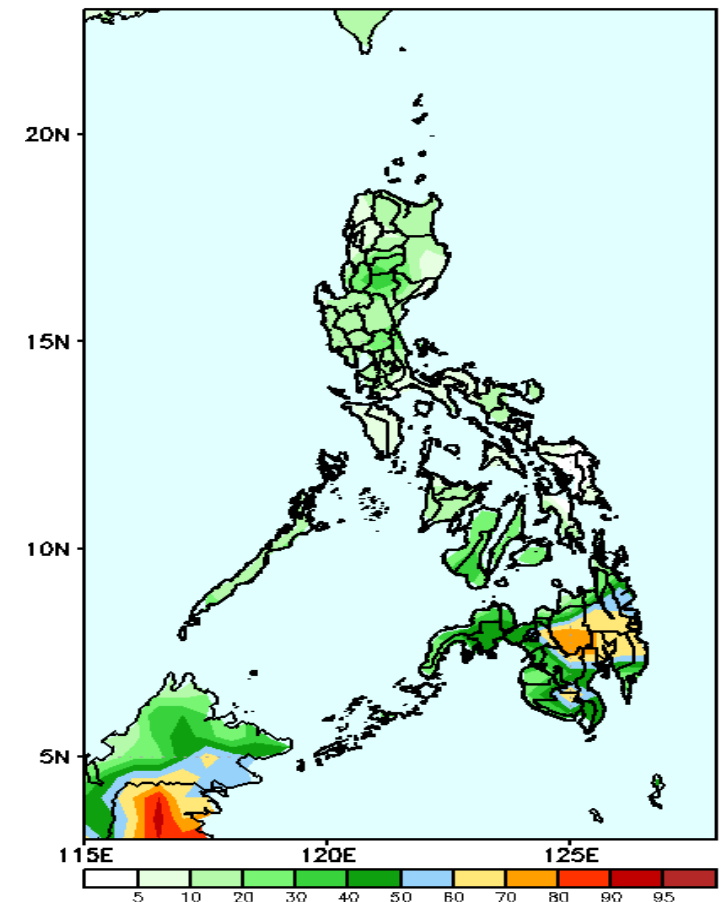
Rainfall deficit of 40-100mm is expected in most parts of the country during the forecast period.

GEFS Week-2 Exceedance Prob. > 25mm
Valid: 20210422 - 20210428



High probability of rainfall to exceed 25mm in Mt. Province, Ifugao and in most parts of Mindanao is expected during the forecast period.

GEFS Week-2 Exceedance Prob. > 50mm
Valid: 20210422 - 20210428

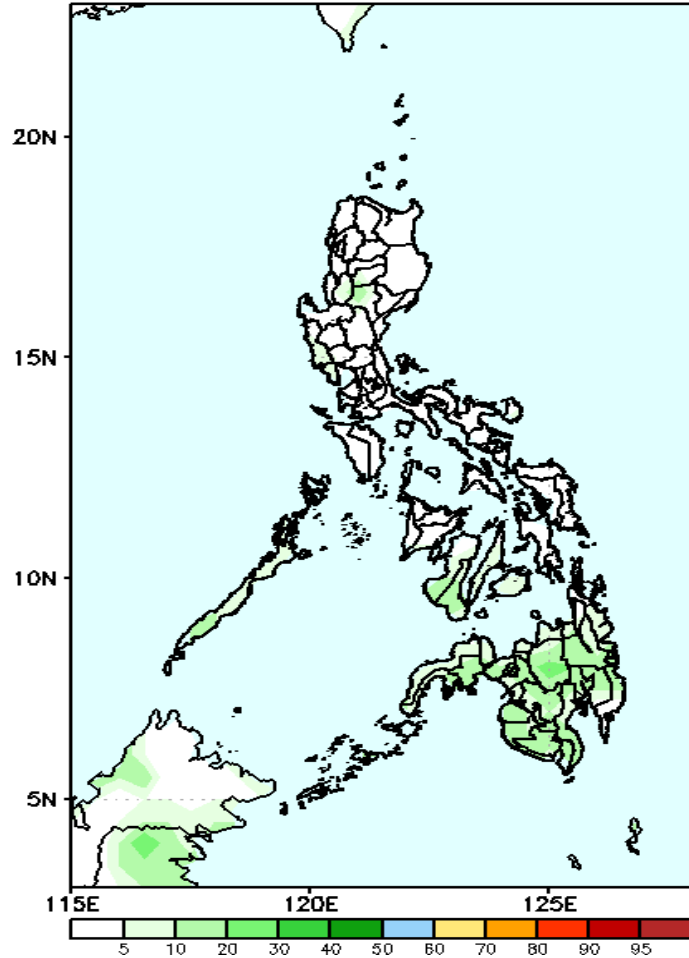


60-80% probability of rainfall to exceed 50mm in most parts of Bukidnon, Agusan Del Sur and Davao Region while less likely for the rest of the country during the forecast period.

Exceedance Probability > 100/150/200 mm

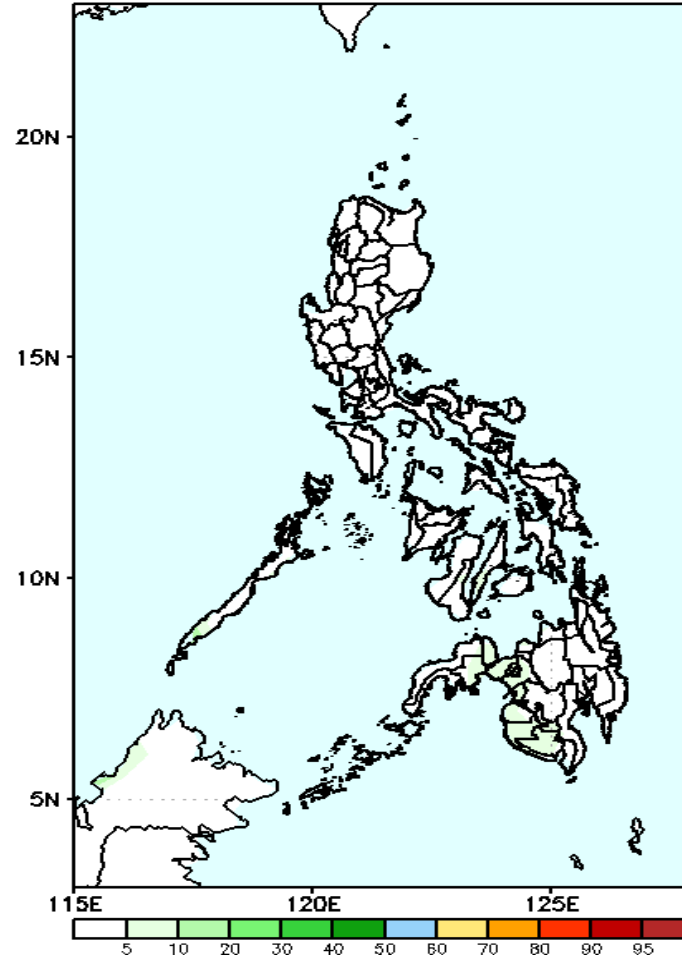
Week 2: April 22-28, 2021

GEFS Week-2 Exceedance Prob. > 100mm
Valid: 20210422 – 20210428



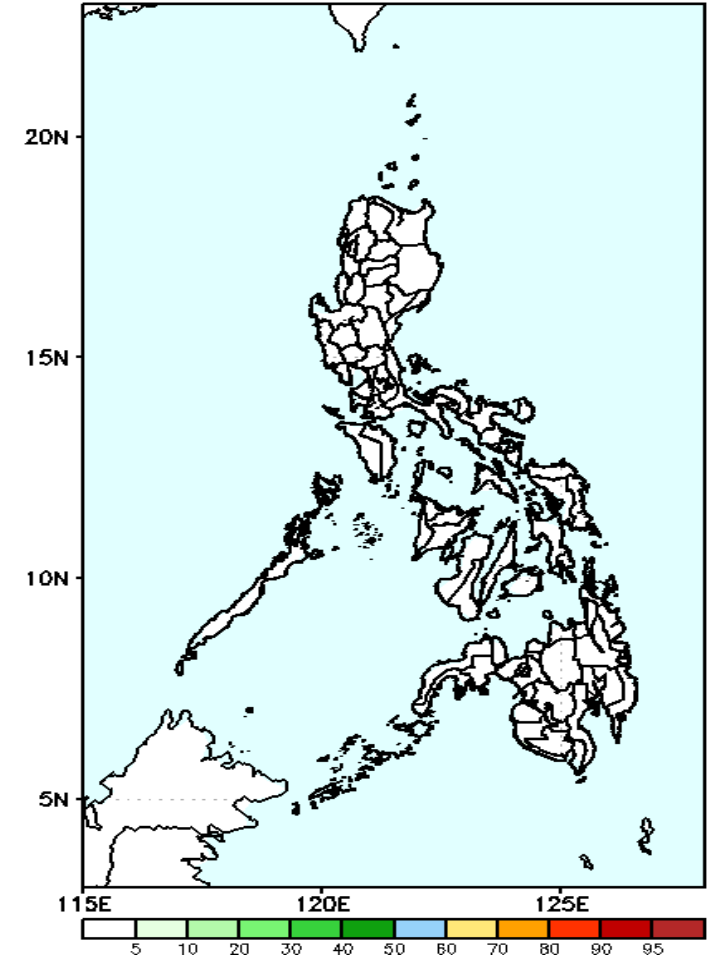
Less probability of rainfall to exceed 100mm in most parts of the country during the forecast period.

GEFS Week-2 Exceedance Prob. > 150mm
Valid: 20210422 – 20210428



Less probability of rainfall to exceed 150mm in most parts of the country during the forecast period.

GEFS Week-2 Exceedance Prob. > 200mm
Valid: 20210422 – 20210428

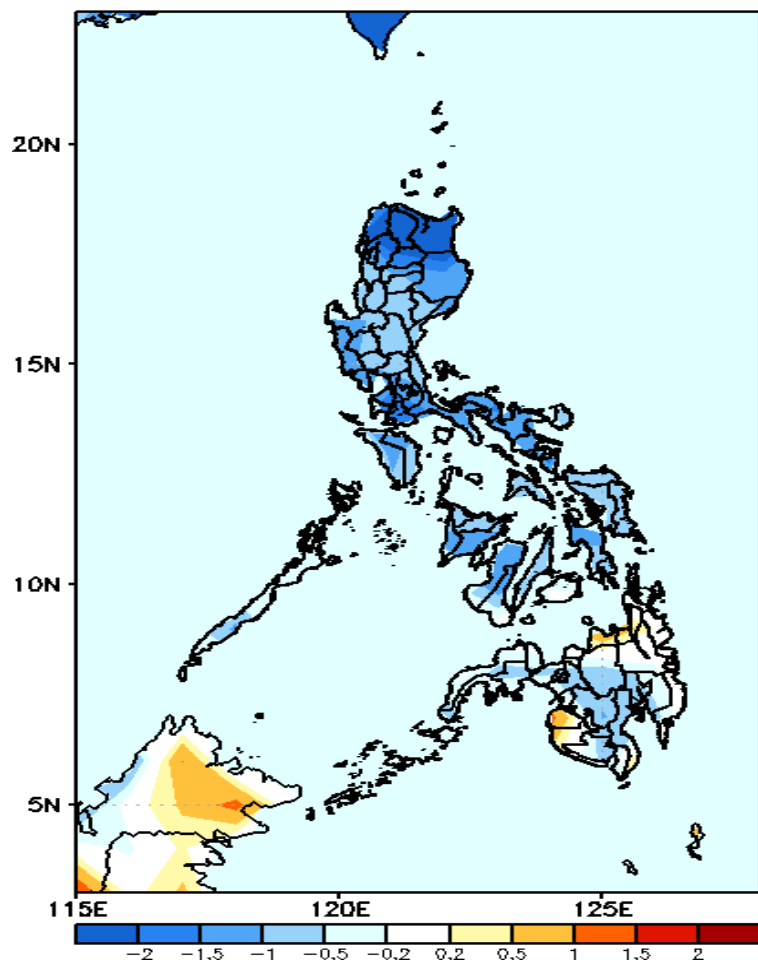


Less probability of rainfall to exceed 200mm in most parts of the country during the forecast period.



GEFS Week-1 & 2 Forecasts: T2m Anomaly

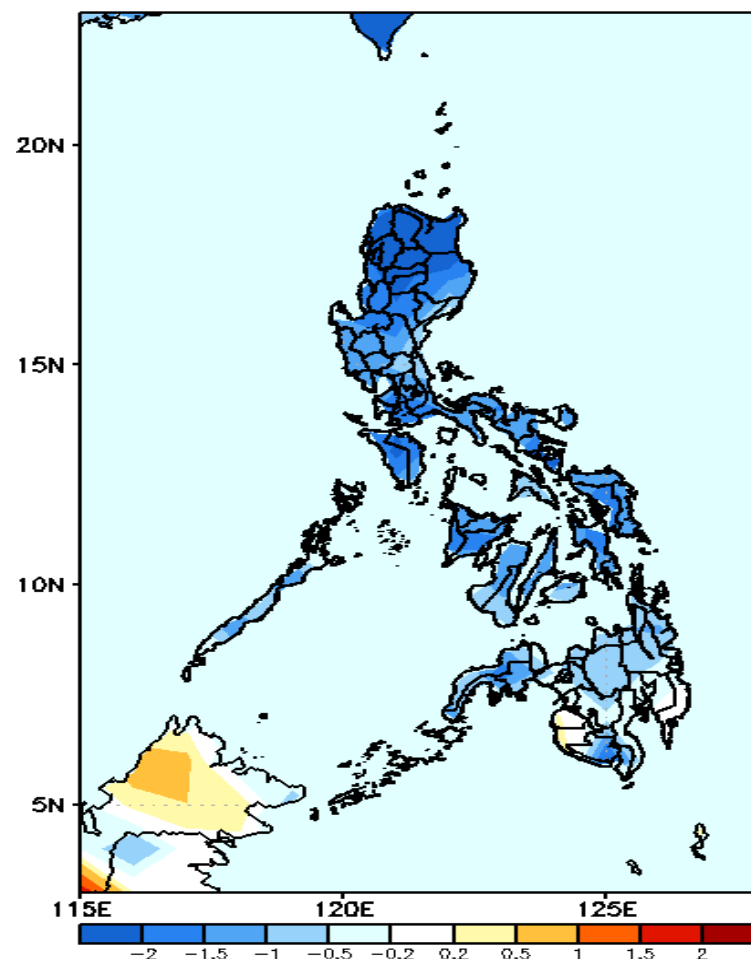
GEFS Week-1 T2m Anomaly
Valid: 20210415 - 20210421



2m Temperature Week 1: April 15-21, 2021

Slightly cooler to cooler than average surface air temperature will likely experience in most parts of Luzon and Visayas while average to slightly warmer temperature in Mindanao during the forecast period.

GEFS Week-2 T2m Anomaly
Valid: 20210422 - 20210428



2m Temperature Week 2: April 22-28, 2021

Slightly cooler to cooler than average surface air temperature will likely experience in most parts of the country except with some patches of Average temperature in southern Mindanao during the forecast period.