



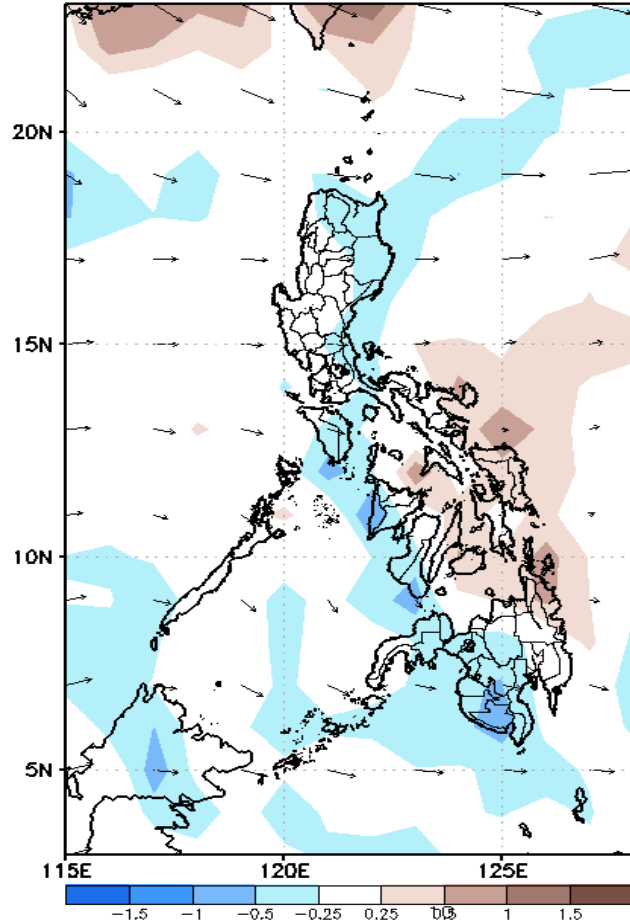
# Week 1 & Week 2 Forecast for the Philippines using GEFS Model



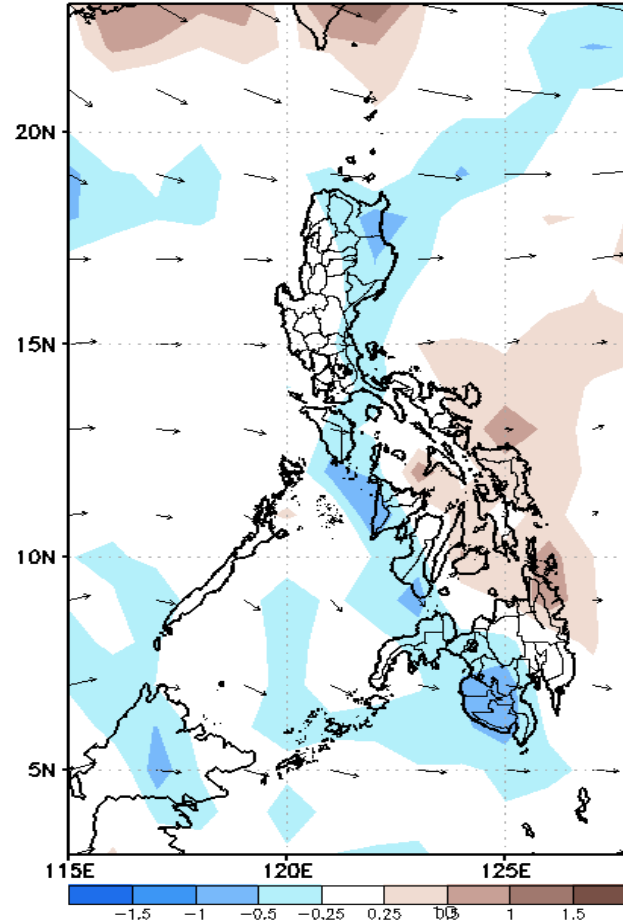
# GEFS Week-1 Forecasts: Divergence & Wind Anomaly

## Week 1: February 15-21, 2021

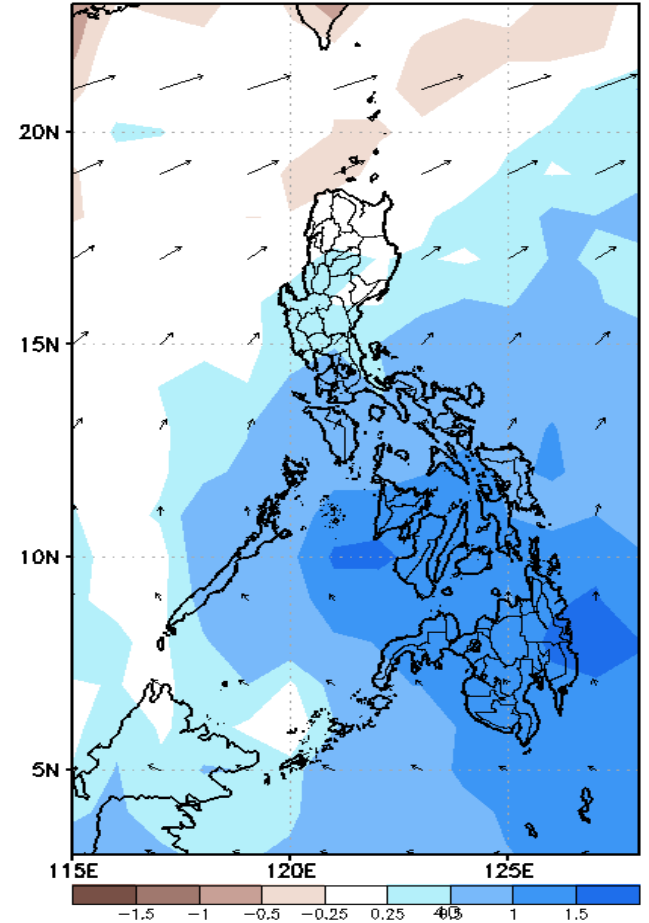
GEFS Week-1 850-hPa Divergence and Wind Anom  
Valid: 20210215 - 20210221



GEFS Week-1 700-hPa Divergence and Wind Anom  
Valid: 20210215 - 20210221



GEFS Week-1 200-hPa Divergence and Wind Anom  
Valid: 20210215 - 20210221

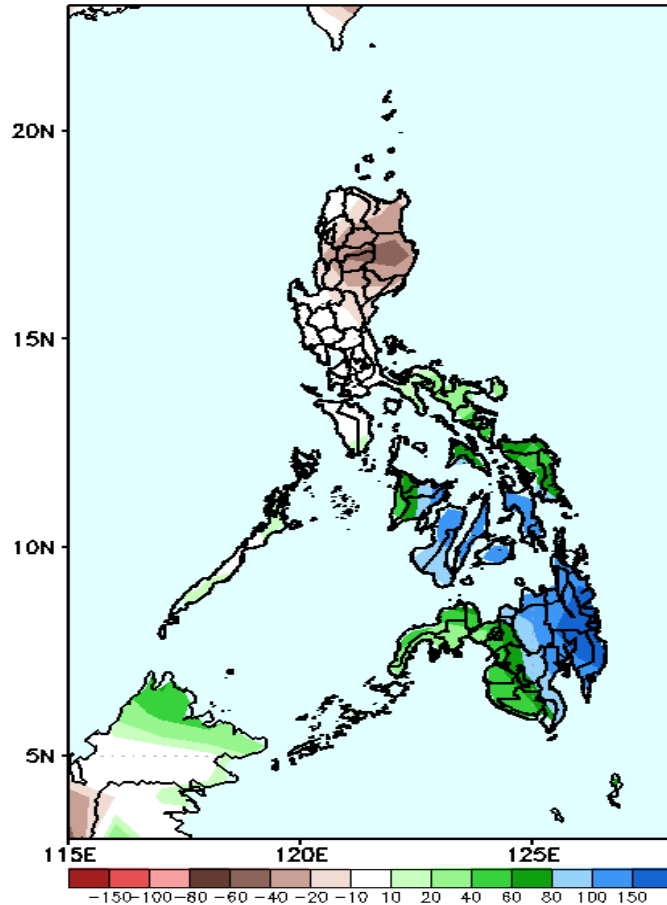


Upper and low level Divergence suggest likelihood of precipitation in most parts of the country. Northeast Monsoon affecting most parts of Luzon, Eastern Visayas and Eastern Mindanao during the forecast period.

# Precipitation Anomaly and Exceedance Probability > 25/50 mm

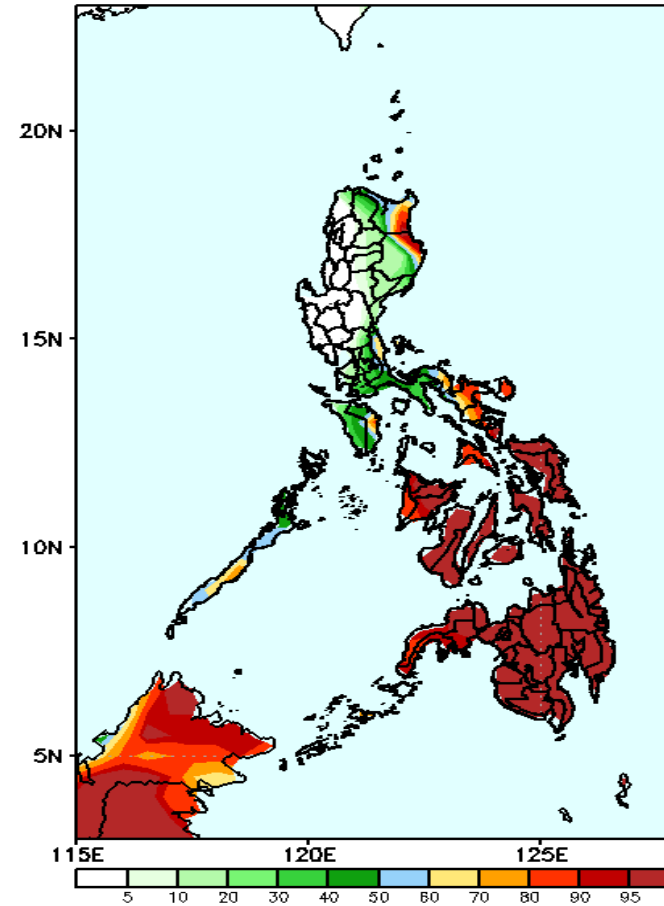
## Week 1: February 15-21, 2021

GEFS Week-1 Precip Anomaly  
Valid: 20210215 - 20210221



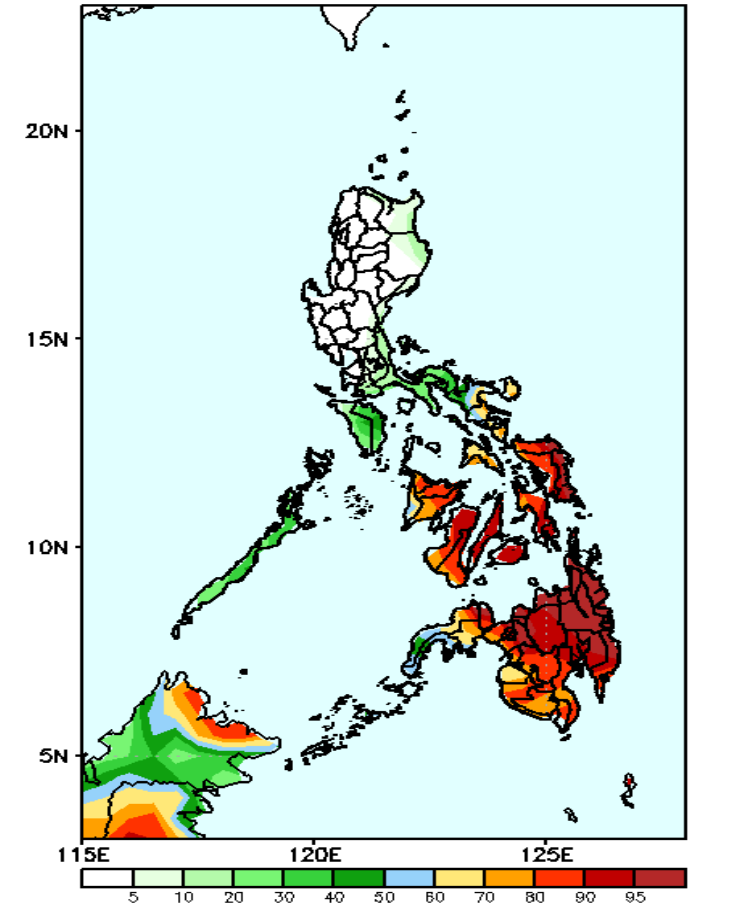
Increase of rainfall of 60-150mm is expected in most parts of Visayas and Mindanao while rainfall deficit of up to 80mm in most parts of Luzon.

GEFS Week-1 Exceedance Prob. > 25mm  
Valid: 20210215 - 20210221



High probability of rainfall to exceed 25mm in eastern parts of Cagayan and Isabela, Bicol region and most parts of Visayas and Mindanao during the forecast period.

GEFS Week-1 Exceedance Prob. > 50mm  
Valid: 20210215 - 20210221



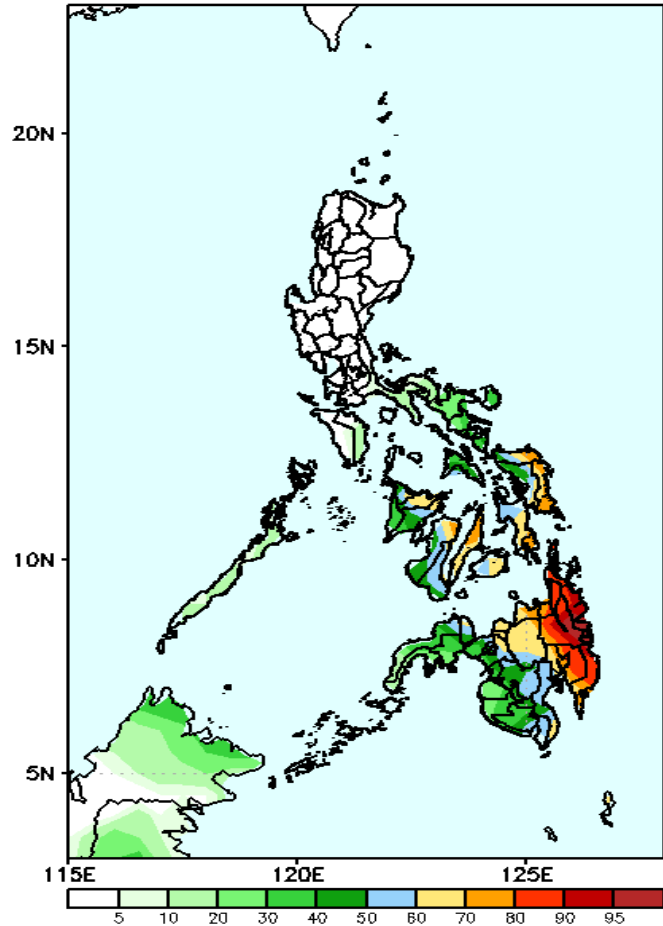
High probability of rainfall to exceed 50mm in some parts of Bicol region and most parts of Visayas and Mindanao during the forecast period.



# Exceedance Probability > 100/150/200 mm

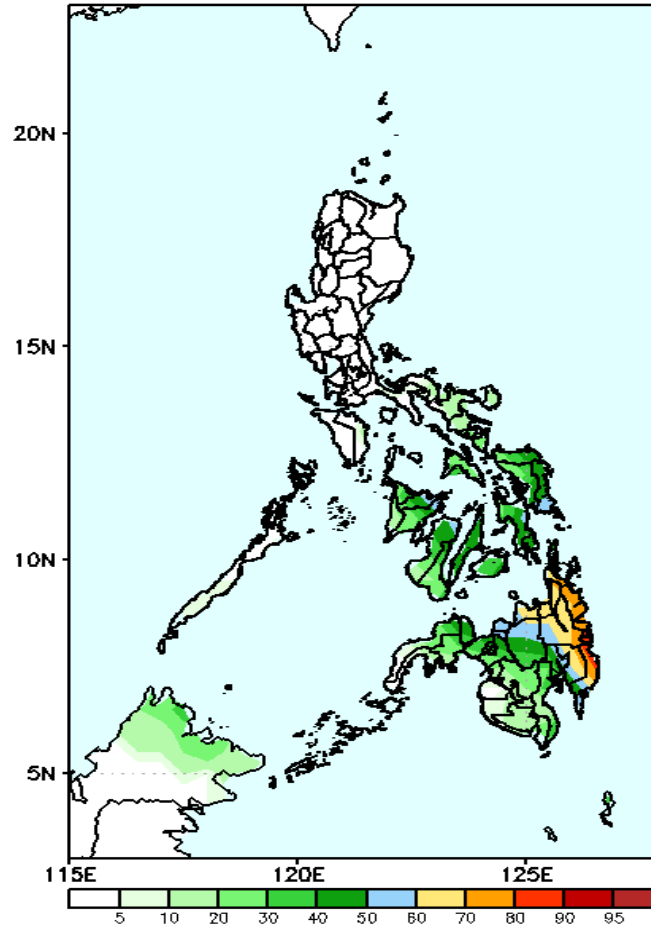
## Week 1: February 15-21, 2021

GEFS Week-1 Exceedance Prob. > 100mm  
Valid: 20210215 - 20210221



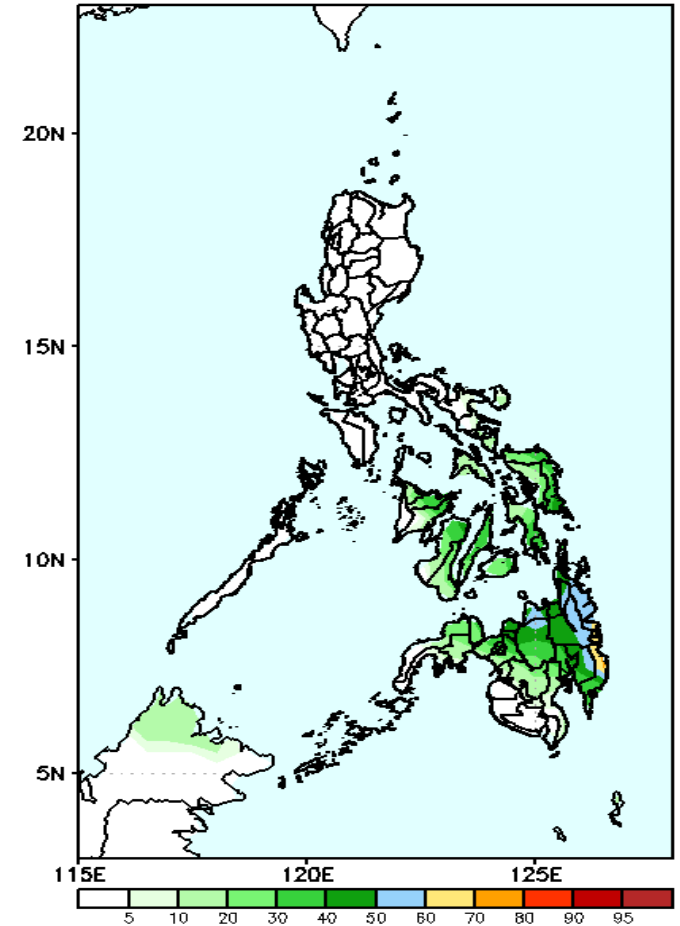
High probability of rainfall to exceed 100mm in Eastern and Central Visayas, Northern Mindanao, CARAGA and most of Davao region while less likely for the rest of the country during the forecast period

GEFS Week-1 Exceedance Prob. > 150mm  
Valid: 20210215 - 20210221



Less probability of rainfall to exceed 150mm in most parts of the country except in CARAGA, Misamis Oriental, Davao Oriental and Compostela Valley where there is 70-95% chance during the forecast period.

GEFS Week-1 Exceedance Prob. > 200mm  
Valid: 20210215 - 20210221



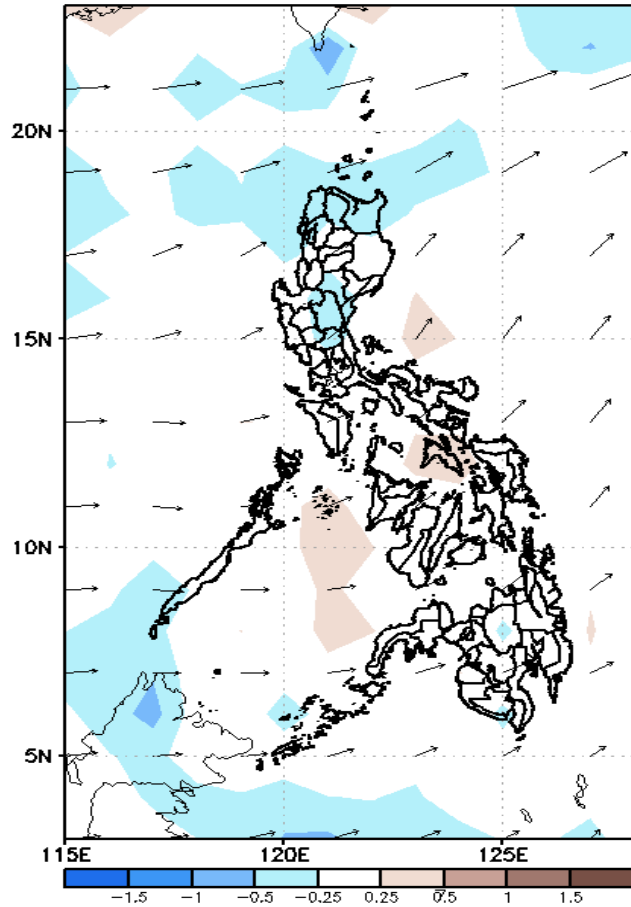
Less probability of rainfall to exceed 200mm in most parts of the country during the forecast period.



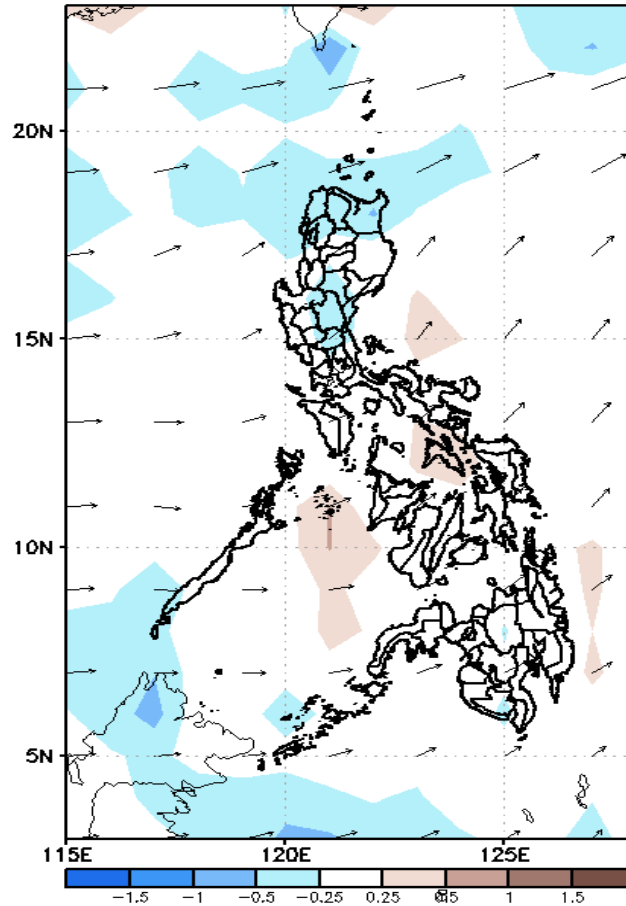
# GEFS Week-2 Forecasts: Divergence & Wind Anomaly

## Week 2: February 22-28, 2021

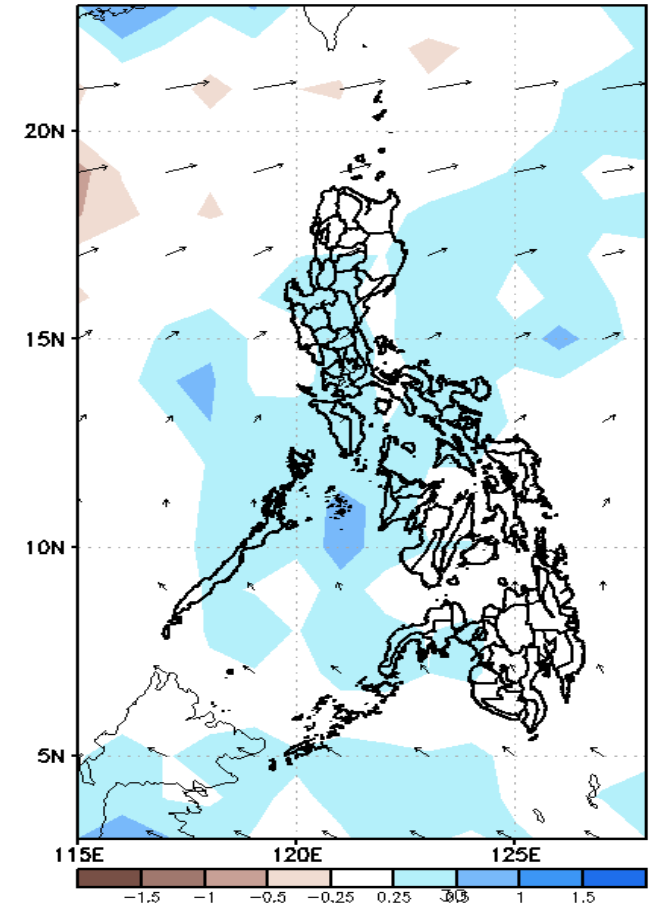
GEFS Week-2 850-hPa Divergence and Wind Anom  
Valid: 20210222 - 20210228



GEFS Week-2 700-hPa Divergence and Wind Anom  
Valid: 20210222 - 20210228



GEFS week-2 200-hPa Divergence and Wind Anom  
Valid: 20210222 - 20210228

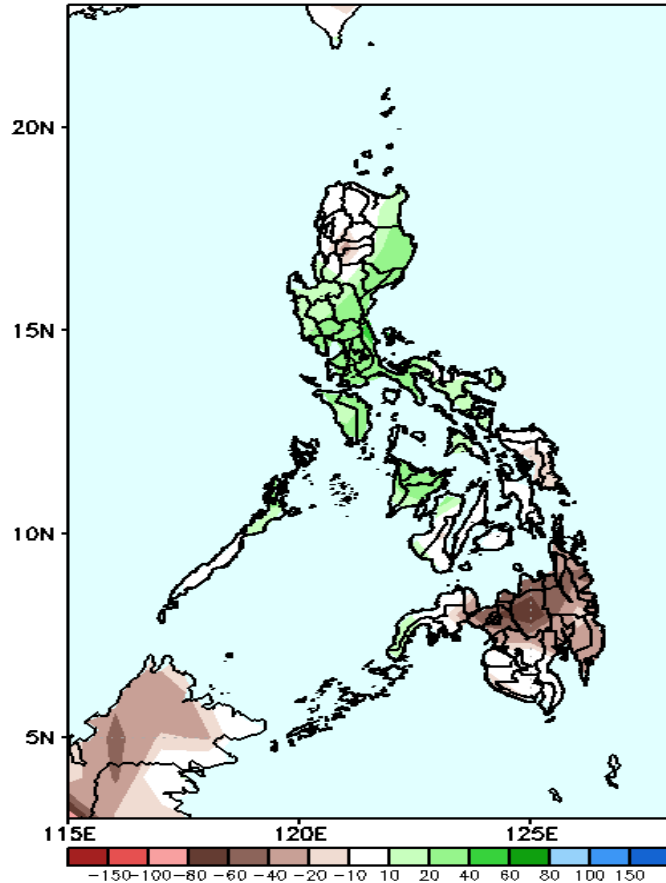


Upper and low level Divergence suggest likelihood of precipitation in most parts of Luzon, Panay Island and Zamboanga peninsula. Northeast Monsoon affecting Extreme Northern Luzon while Easterlies affecting most parts of the country during the forecast period.

# Precipitation Anomaly and Exceedance Probability > 25/50 mm

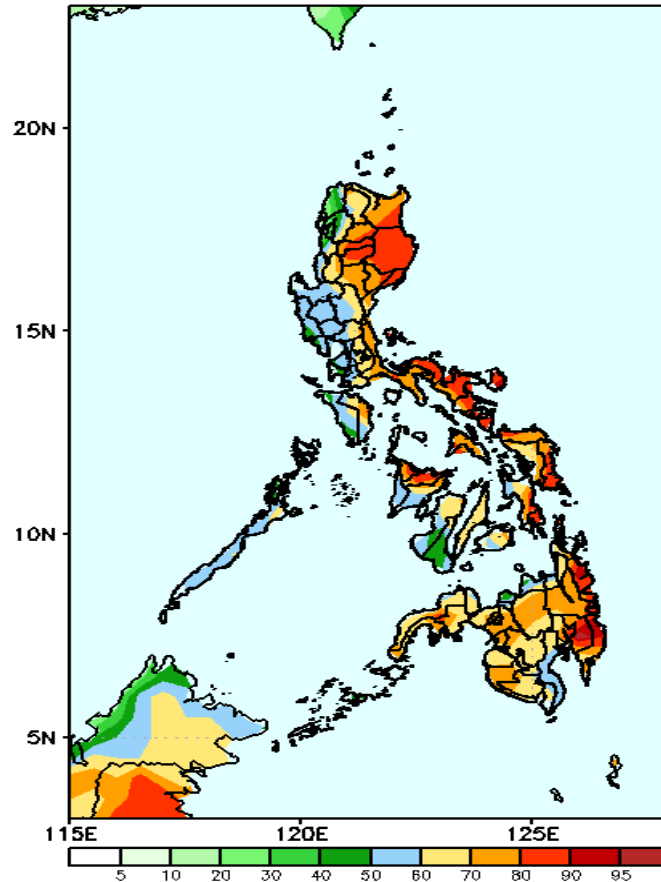
## Week 2: February 22-28, 2021

GEFS Week-2 Precip Anomaly  
Valid: 20210222 - 20210228



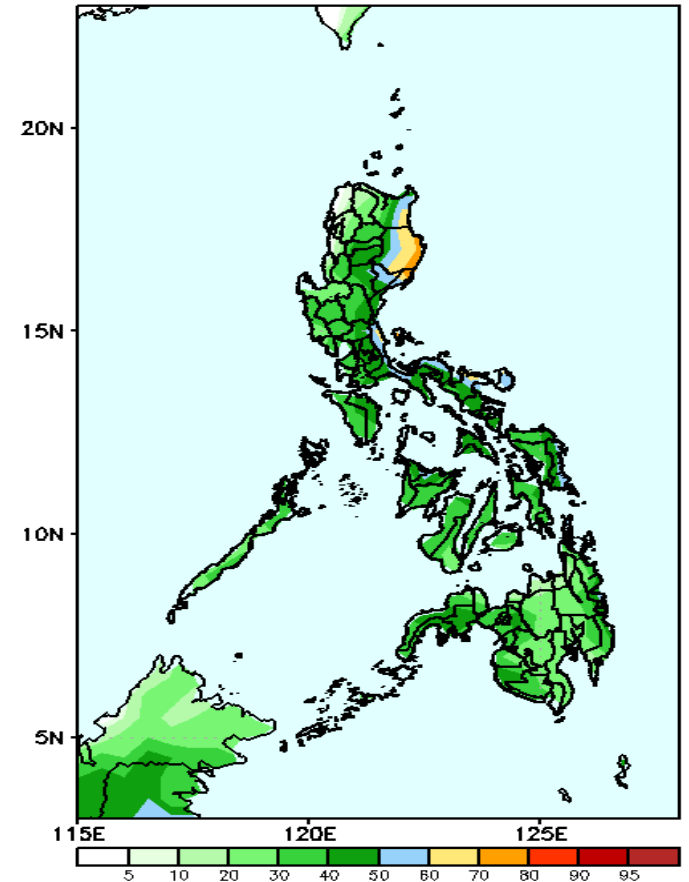
Increase of rainfall of up to 60mm is expected in most parts of Luzon & Panay Island while rainfall deficit of up to 80mm in Mindanao.

GEFS Week-2 Exceedance Prob. > 25mm  
Valid: 20210222 - 20210228



High probability of rainfall to exceed 25mm in most parts of the country except in Ilocos Norte during the forecast period.

GEFS Week-2 Exceedance Prob. > 50mm  
Valid: 20210222 - 20210228

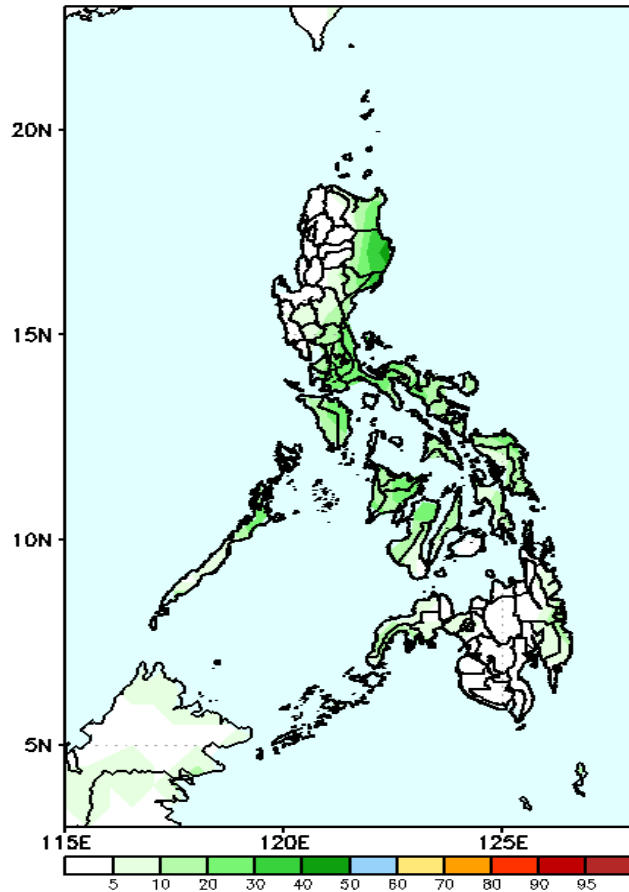


Less probability of rainfall to exceed 50mm in most parts of the country except eastern part of Cagayan, Isabela and Aurora where there is 60-85% chance during the forecast period.

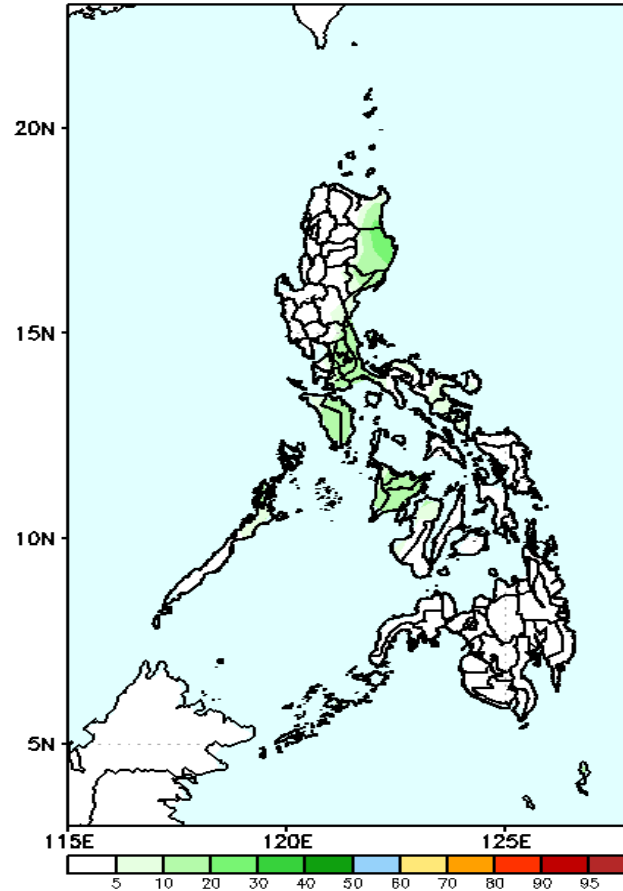
# Exceedance Probability > 100/150/200 mm

## Week 2: February 22-28, 2021

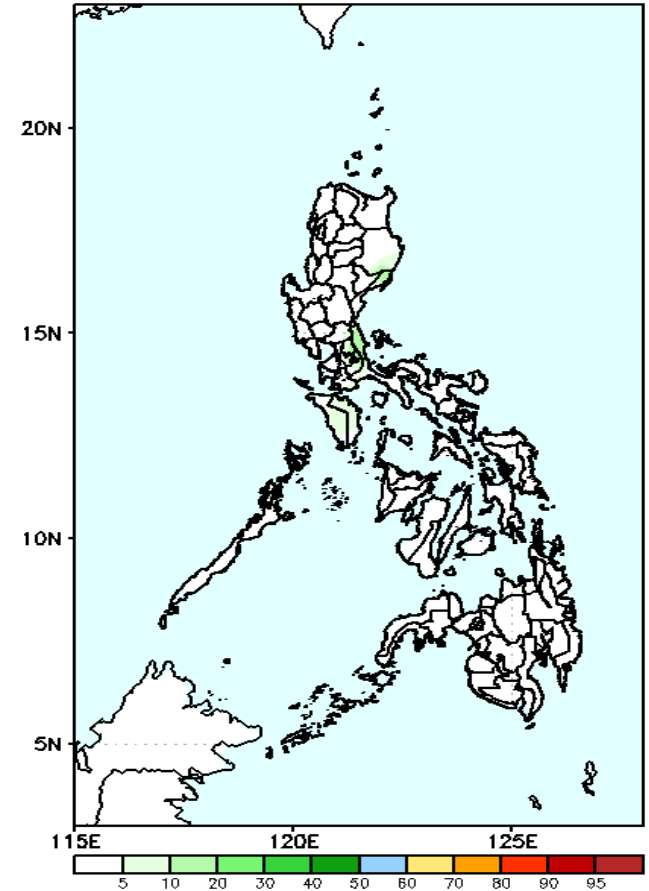
GEFS Week-2 Exceedance Prob. > 100mm  
Valid: 20210222 - 20210228



GEFS Week-2 Exceedance Prob. > 150mm  
Valid: 20210222 - 20210228



GEFS Week-2 Exceedance Prob. > 200mm  
Valid: 20210222 - 20210228



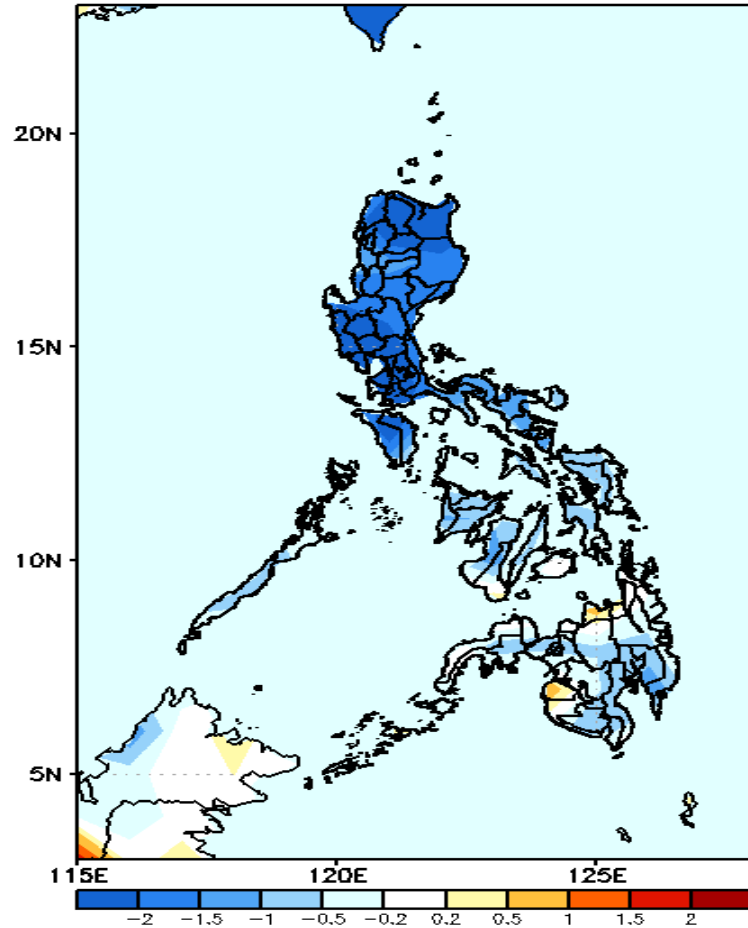
Less probability of rainfall to exceed 100mm in most parts of the country during the forecast period.

Less probability of rainfall to exceed 150mm in most parts of the country during the forecast period.

Less probability of rainfall to exceed 200mm in most parts of the country during the forecast period.

# GEFS Week-1 & 2 Forecasts: T2m Anomaly

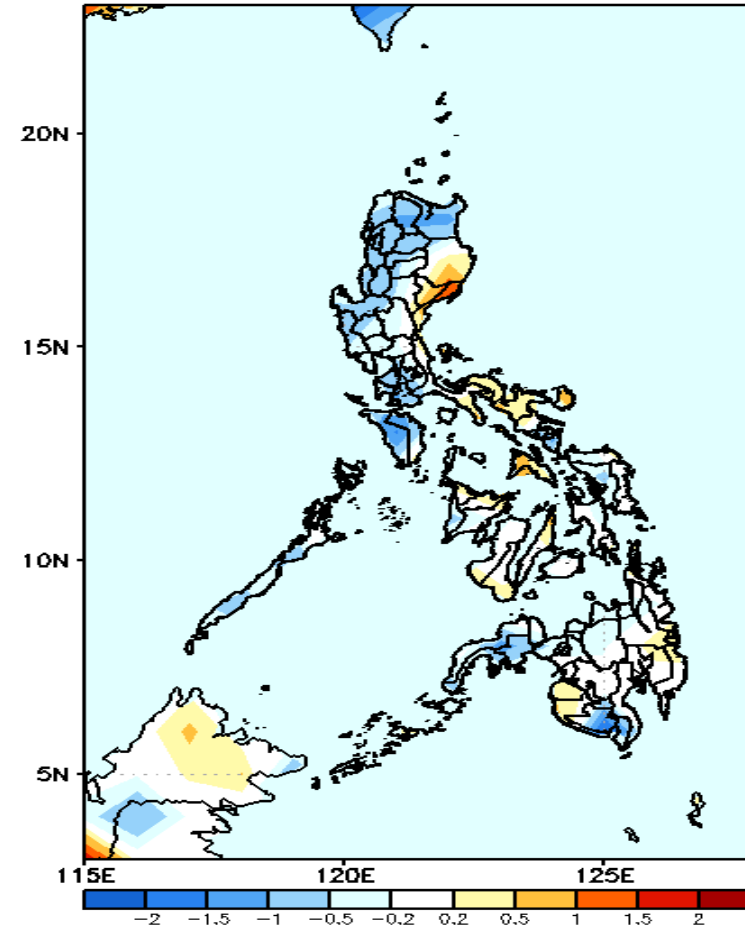
GEFS Week-1 T2m Anomaly  
Valid: 20210215 - 20210221



## 2m Temperature Week 1: February 15-21, 2021

Cooler than average surface air temperature is expected in Luzon while average to slightly cooler than average temperature for the rest of the country (except Misamis Oriental & Maguindanao) during the forecast period.

GEFS Week-2 T2m Anomaly  
Valid: 20210222 - 20210228



## 2m Temperature Week 2: February 22-28, 2021

Slightly warmer to warmer than average surface air temperature is expected in Isabela, Quirino, Aurora and Bicol Region while average to slightly cooler than average temperature for the rest of the country during the forecast period.