



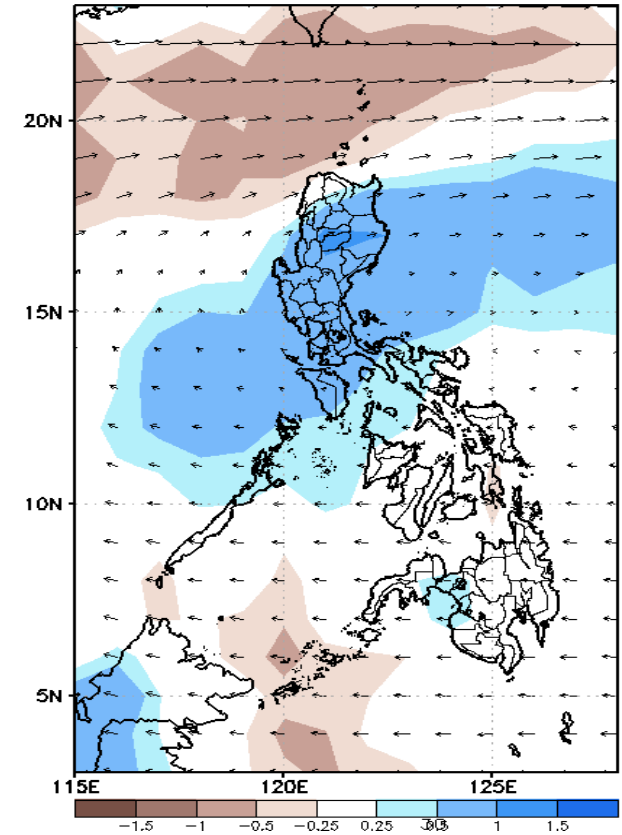
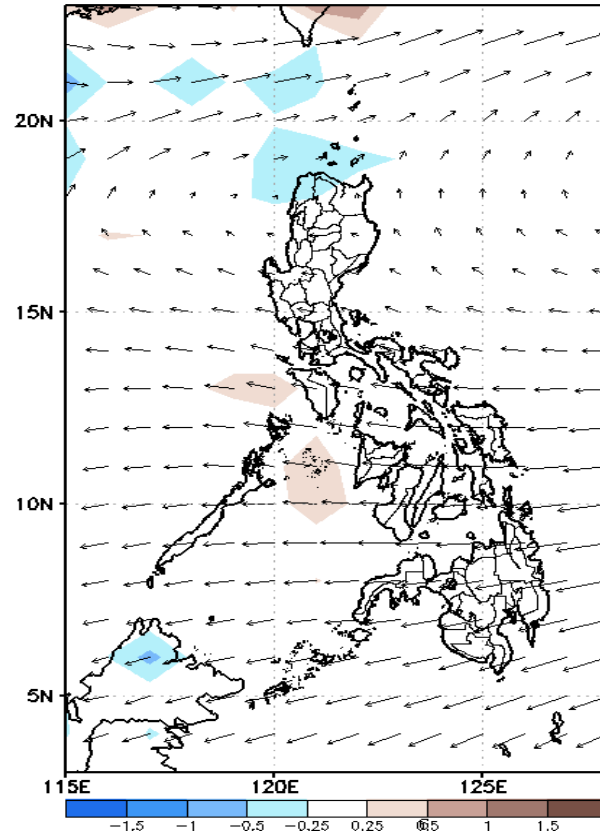
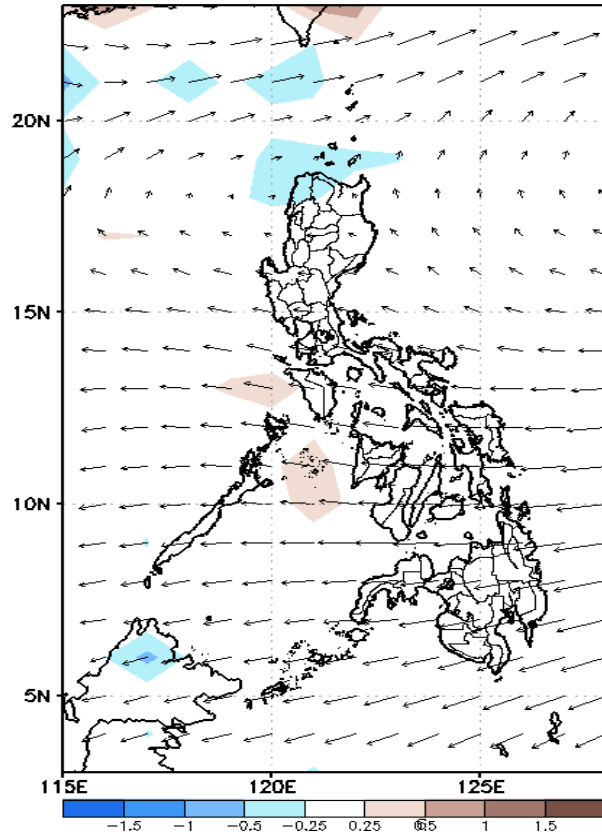
Week 1 & Week 2 Forecast for the Philippines using GEFS Model



GEFS Week-1 Forecasts: Divergence & Wind Anomaly

Week 1: March 15-21, 2021

GEFS Week-1 850-hPa Divergence and Wind AnomaGEFS Week-1 700-hPa Divergence and Wind AnomaGEFS Week-1 200-hPa Divergence and Wind Anoma
Valid: 20210315 - 20210321Valid: 20210315 - 20210321Valid: 20210315 - 20210321

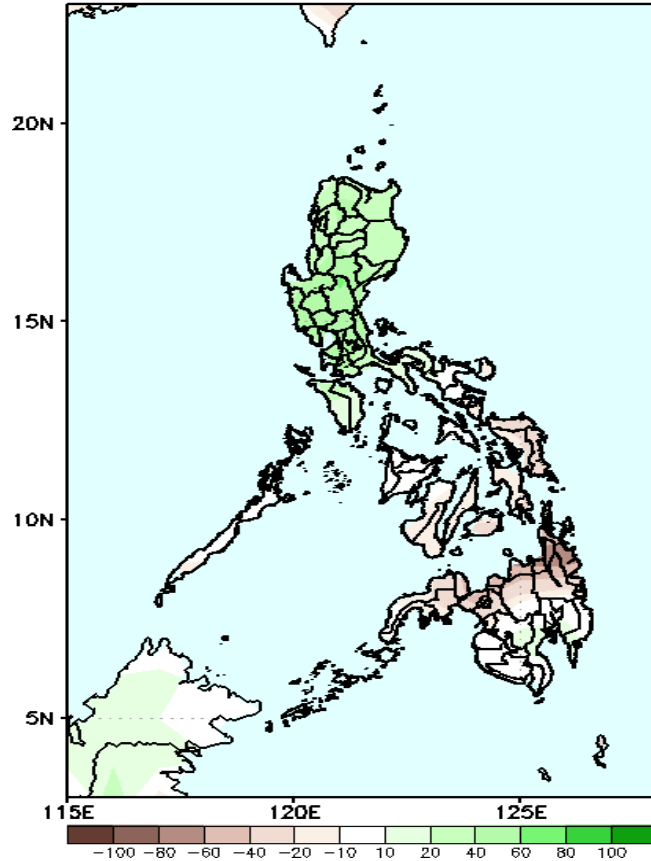


Upper and low level Divergence suggest likelihood of precipitation in most parts of Luzon. Northeast Monsoon affecting most parts of Luzon. Easterlies affecting Visayas and Mindanao during the forecast period.

Precipitation Anomaly and Exceedance Probability > 25/50 mm

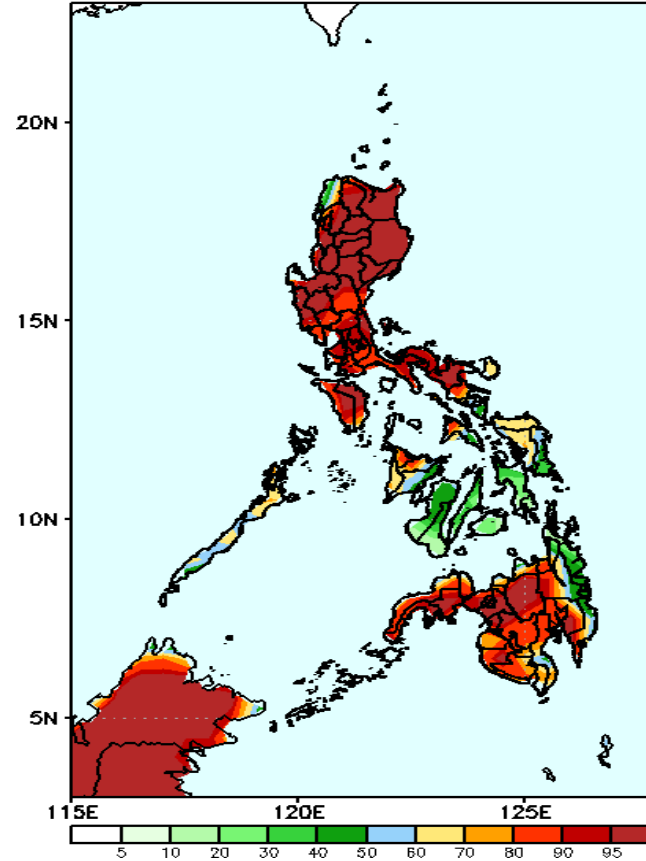
Week 1: March 15-21, 2021

GEFS Week-1 Precip Anomaly
Valid: 20210315 - 20210321



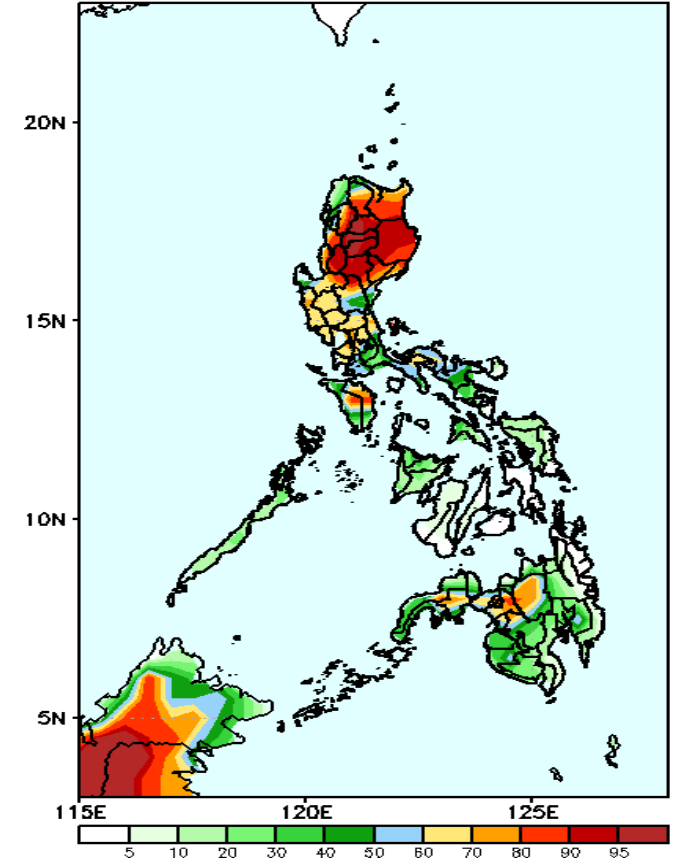
Increase of rainfall of up to 80mm is expected in most parts of Luzon while Rainfall deficit of up to 100mm in most parts of Visayas and Mindanao during the forecast period.

GEFS Week-1 Exceedance Prob. > 25mm
Valid: 20210315 - 20210321



High probability of rainfall to exceed 25mm in most parts of Luzon, Panay Island, Northern Samar and Samar and most parts of Mindanao while less likely for the rest of the country during the forecast period.

GEFS Week-1 Exceedance Prob. > 50mm
Valid: 20210315 - 20210321

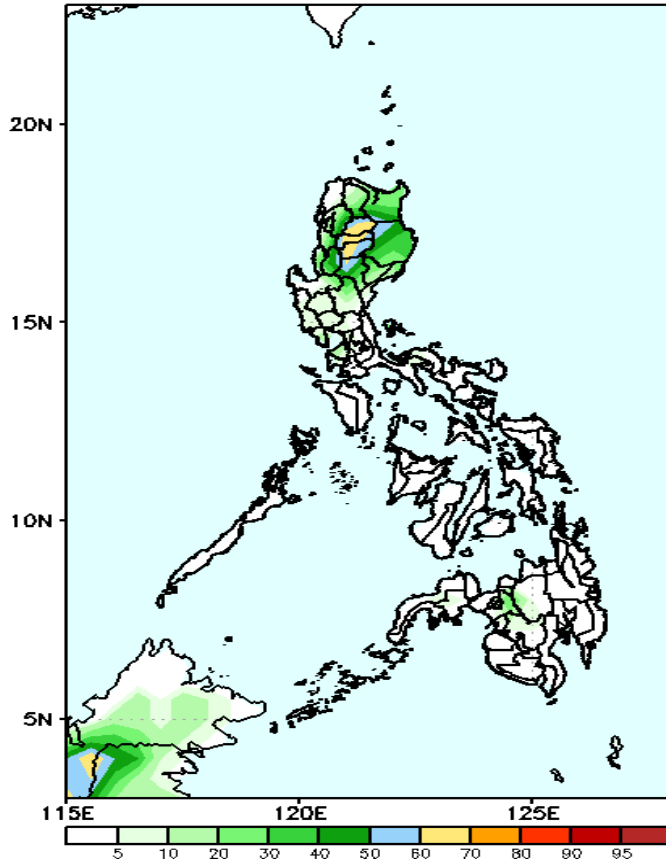


High probability of rainfall to exceed 50mm in most parts of Northern Luzon and Central Luzon, Mindoro, Bukidnon, Lanao del Sur and Zamboanga del Sur while less likely for the rest of the country during the forecast period.

Exceedance Probability > 100/150/200 mm

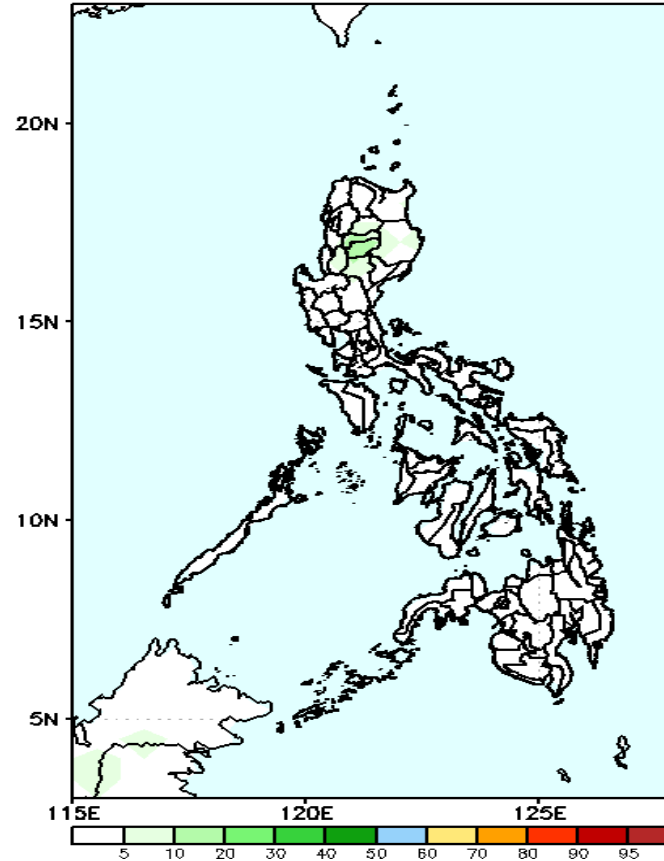
Week 1: March 15-21, 2021

GEFS Week-1 Exceedance Prob. > 100mm
Valid: 20210315 - 20210321



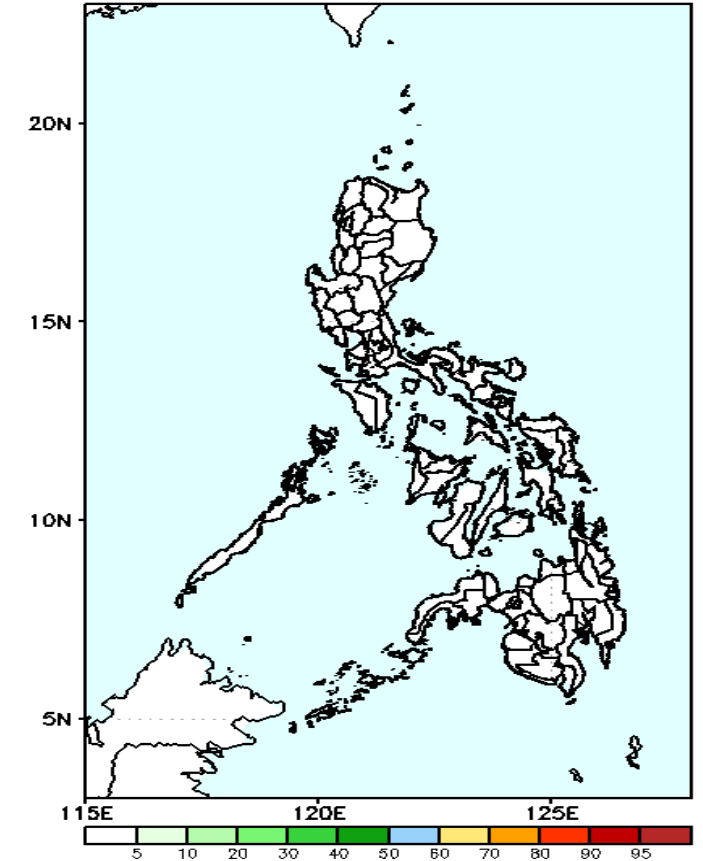
Less probability of rainfall to exceed 100mm in most parts of the country during the forecast period.

GEFS Week-1 Exceedance Prob. > 150mm
Valid: 20210315 - 20210321



Less probability of rainfall to exceed 150mm in most parts of the country during the forecast period.

GEFS Week-1 Exceedance Prob. > 200mm
Valid: 20210315 - 20210321



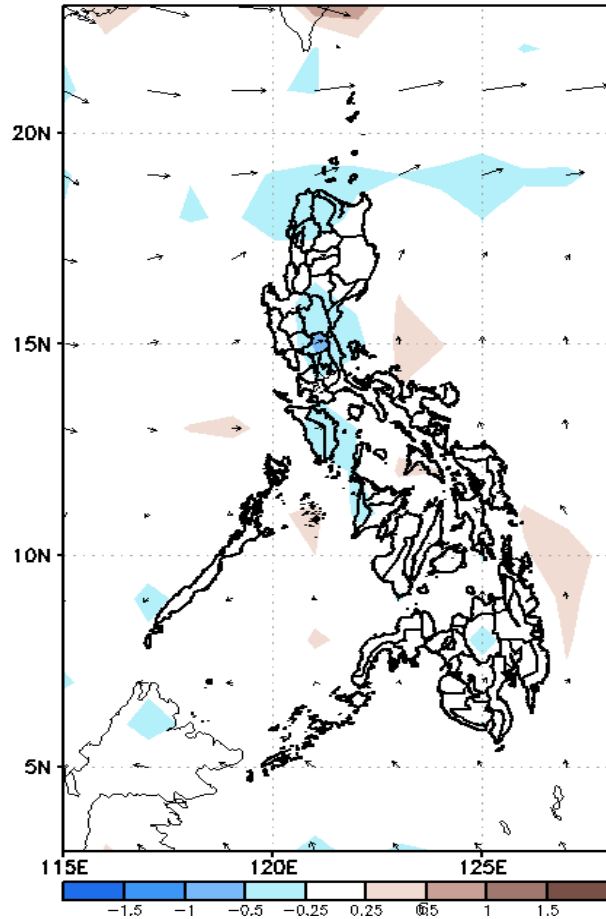
Less probability of rainfall to exceed 200mm in most parts of the country during the forecast period.



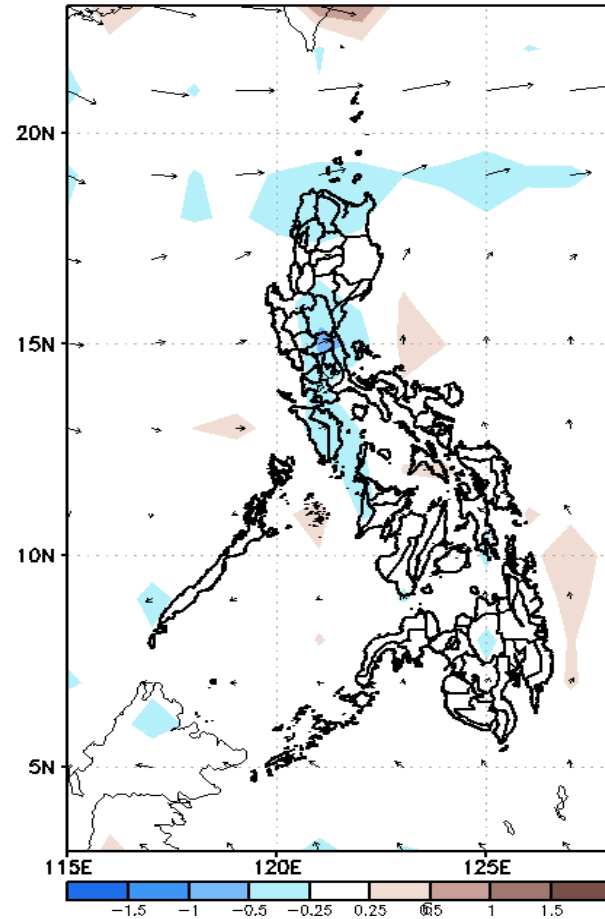
GEFS Week-2 Forecasts: Divergence & Wind Anomaly

Week 2: March 22-28, 2021

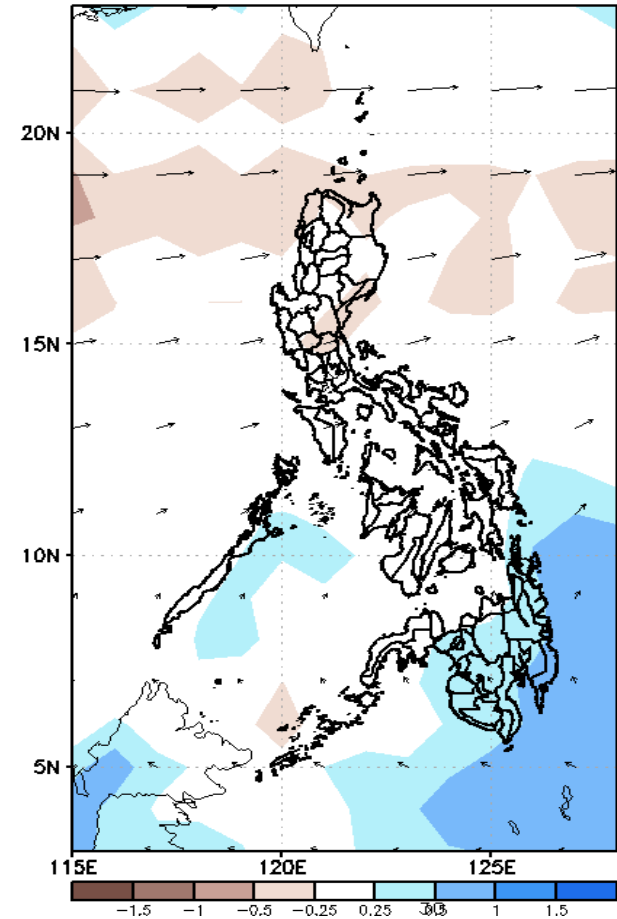
GEFS Week-2 850-hPa Divergence and Wind Anom
Valid: 20210322 - 20210328



GEFS Week-2 700-hPa Divergence and Wind Anom
Valid: 20210322 - 20210328



GEFS week-2 200-hPa Divergence and Wind Anom
Valid: 20210322 - 20210328

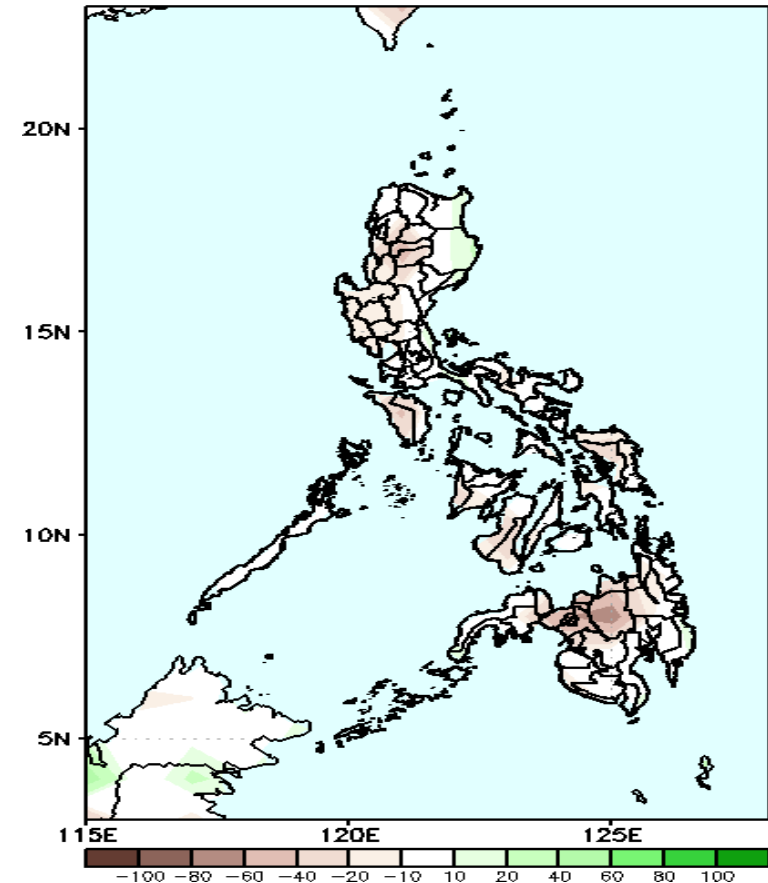


Upper and low level Divergence suggest likelihood of precipitation in some parts of Central Luzon and most parts of Mindanao. Easterlies affecting most parts of the country during the forecast period.

Precipitation Anomaly and Exceedance Probability > 25/50 mm

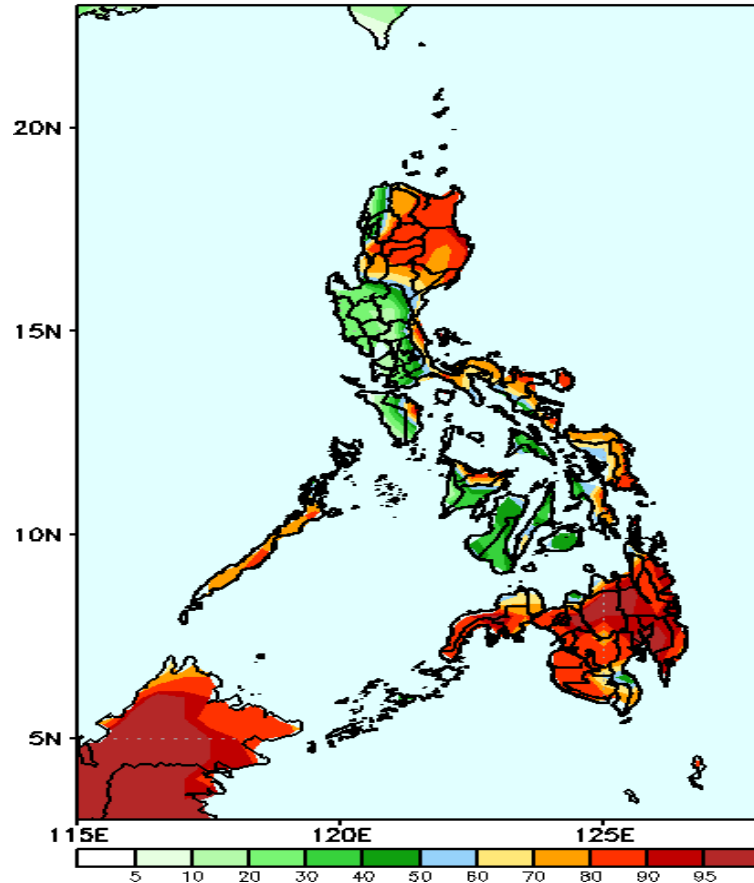
Week 2: March 22-28, 2021

GEFS Week-2 Precip Anomaly
Valid: 20210322 - 20210328



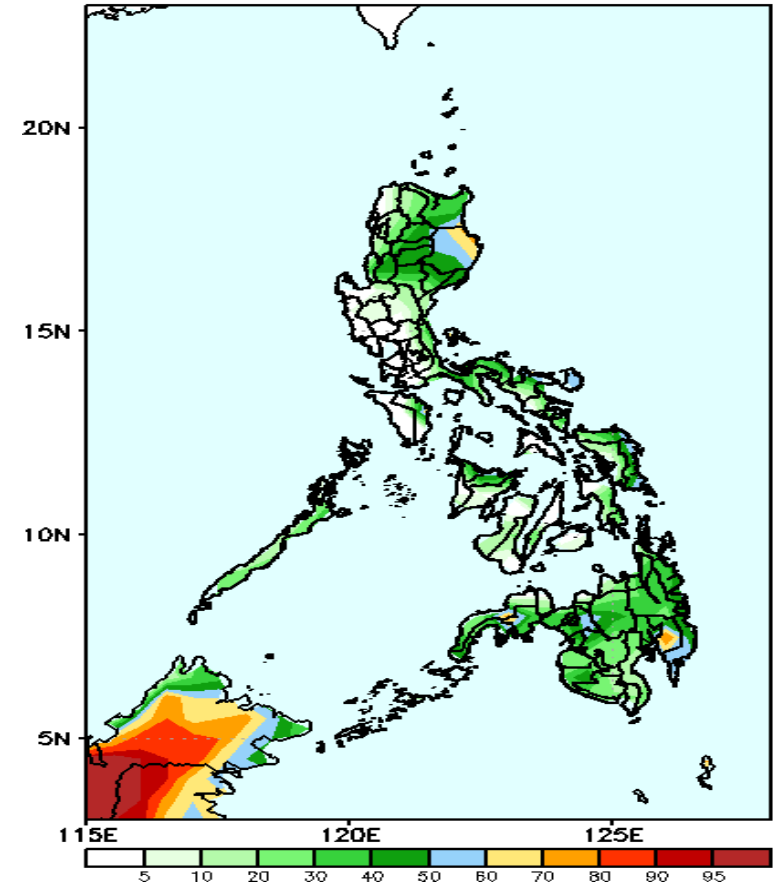
Rainfall deficit of up to 80mm is expected in most parts of the country during the forecast period.

GEFS Week-2 Exceedance Prob. > 25mm
Valid: 20210322 - 20210328



High probability of rainfall to exceed 25mm in most parts of Northern Luzon, Aurora, Quezon, Bicol Region, Palawan, eastern Visayas and most parts of Mindanao during the forecast period.

GEFS Week-2 Exceedance Prob. > 50mm
Valid: 20210322 - 20210328

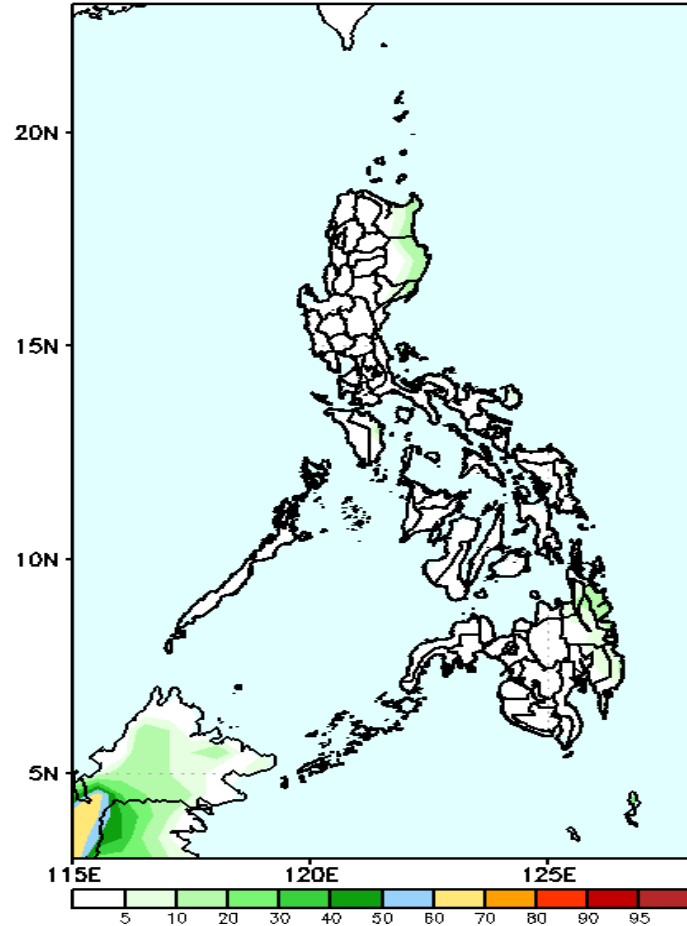


Less probability of rainfall to exceed 50mm in most parts of the country during the forecast period.

Exceedance Probability > 100/150/200 mm

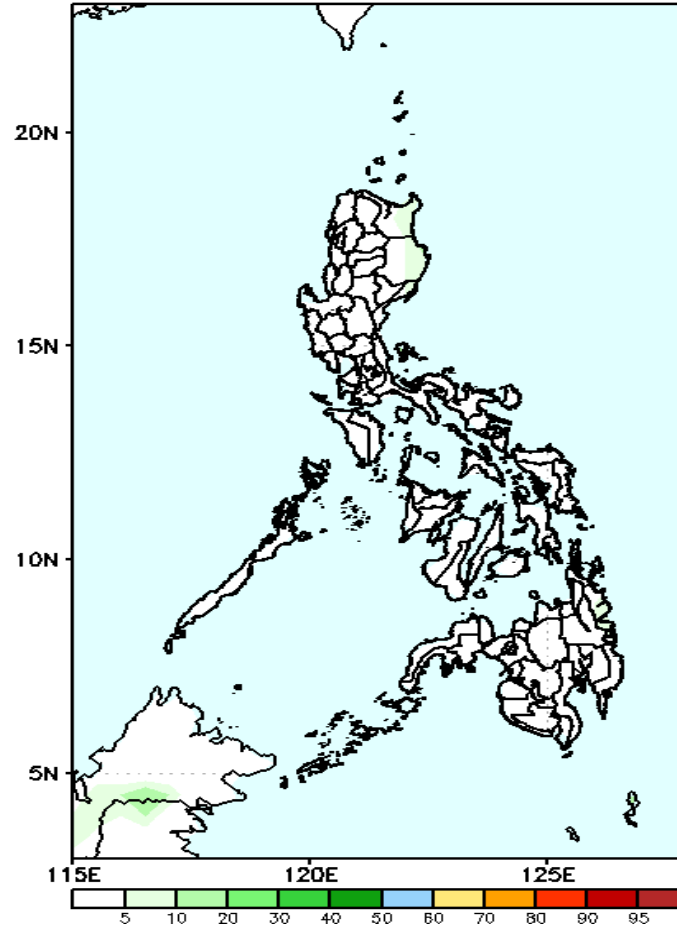
Week 2: March 22-28, 2021

GEFS Week-2 Exceedance Prob. > 100mm
Valid: 20210322 – 20210328



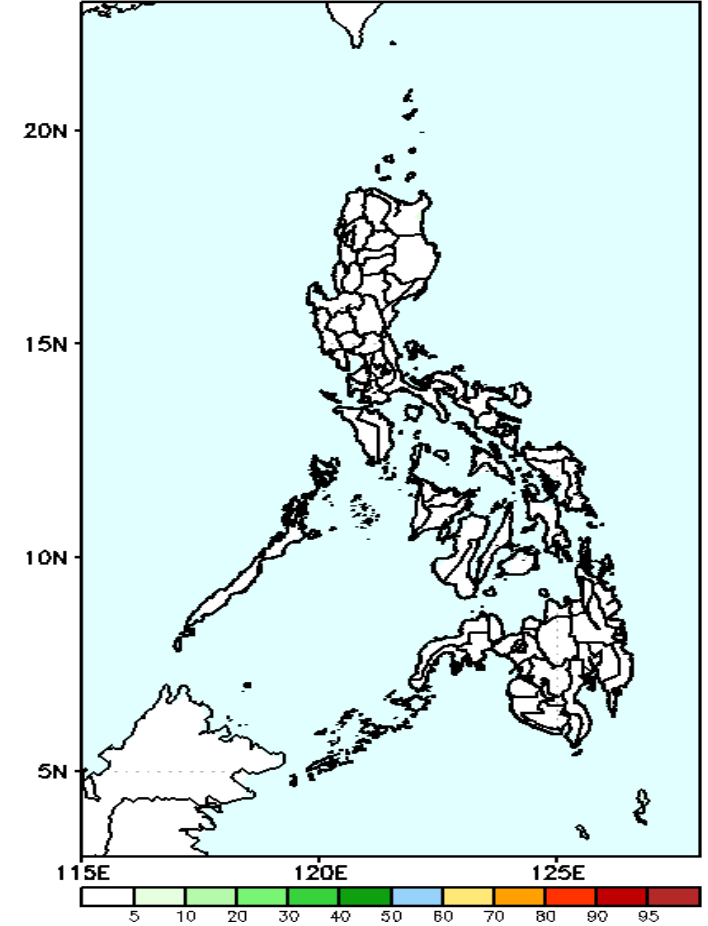
Less probability of rainfall to exceed 100mm in most parts of the country during the forecast period.

GEFS Week-2 Exceedance Prob. > 150mm
Valid: 20210322 – 20210328



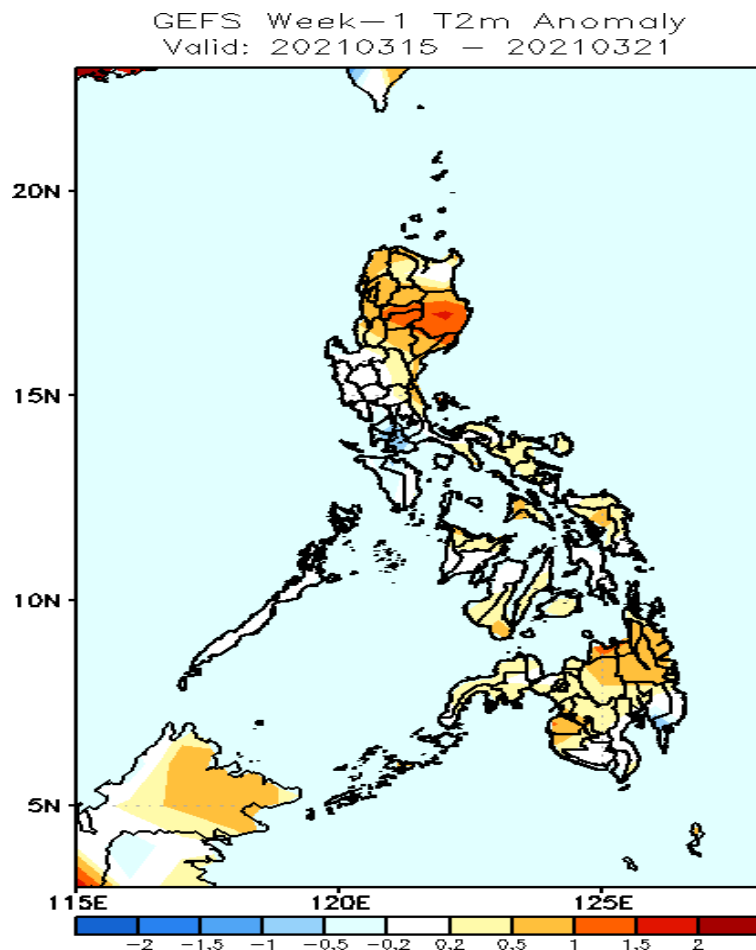
Less probability of rainfall to exceed 150mm in most parts of the country during the forecast period.

GEFS Week-2 Exceedance Prob. > 200mm
Valid: 20210322 – 20210328



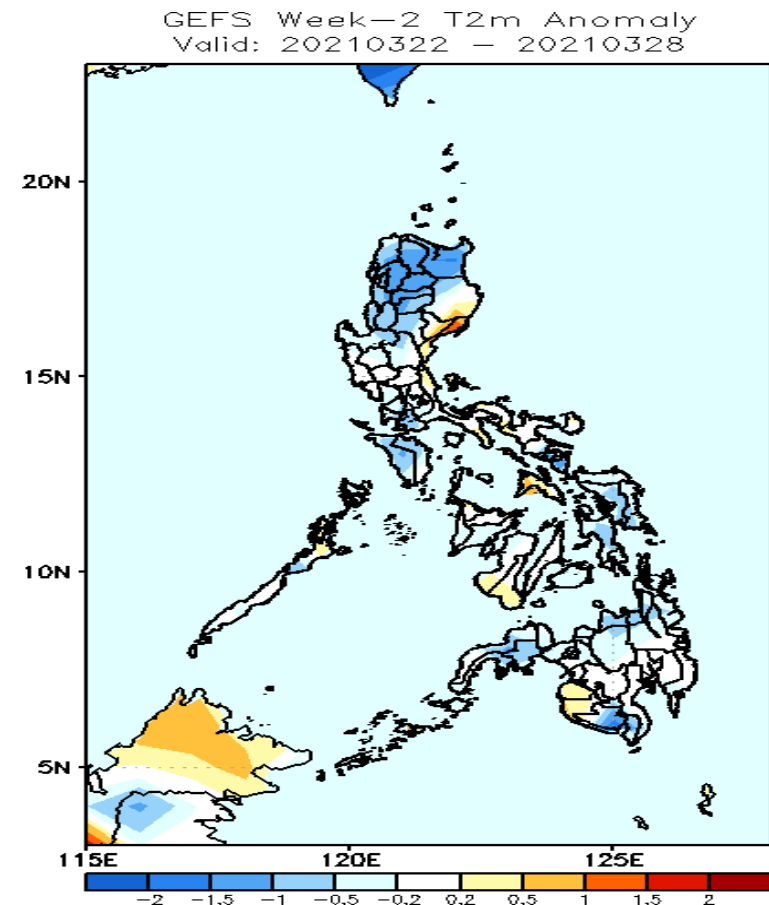
Less probability of rainfall to exceed 200mm in most parts of the country during the forecast period.

GEFS Week-1 & 2 Forecasts: T2m Anomaly



2m Temperature Week 1: March 15-21, 2021

Slightly warmer to warmer than average surface air temperature will likely experience in most parts of the country except in Laguna, Batangas, Mindoro provinces and Davao Oriental were slightly cooler than average surface air temperature is expected during the forecast period.



2m Temperature Week 2: March 22-28, 2021

Slightly cooler to cooler than average surface air temperature will likely experience in most parts of the country except with patches of slightly warmer than average surface air temperature in most of parts of Isabela, Masbate, Negros provinces, Masbate, Central Visayas, Davao region, Maguindanao and Sultan Kudarat during the forecast period.