



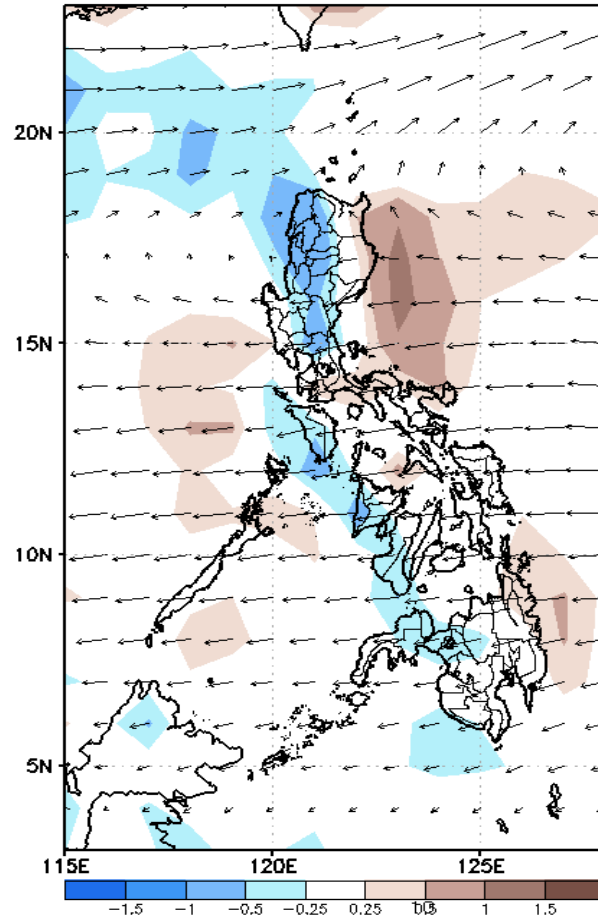
Week 1 & Week 2 Forecast for the Philippines using GEFS Model



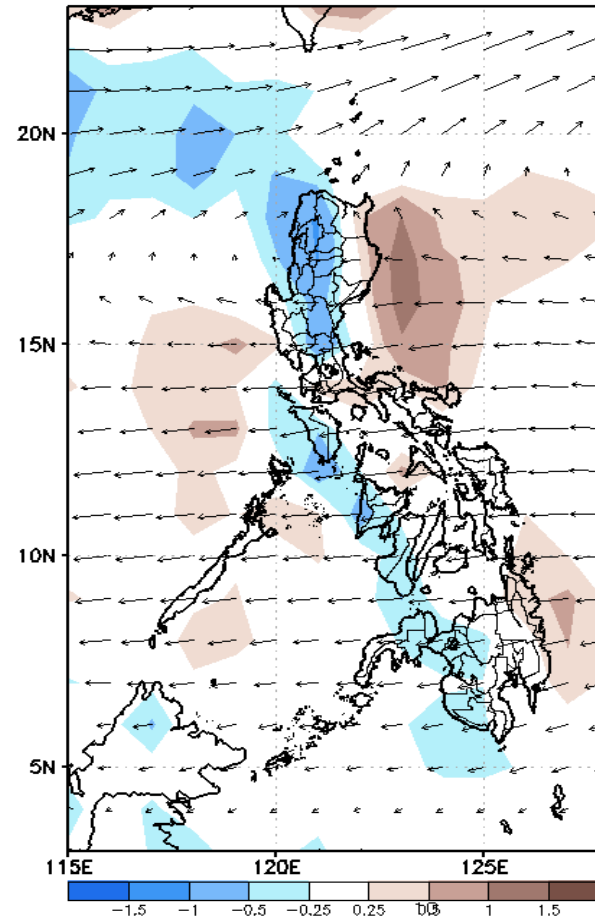
GEFS Week-1 Forecasts: Wind Anomaly Forecast

Week 1: Dec 16-22, 2022

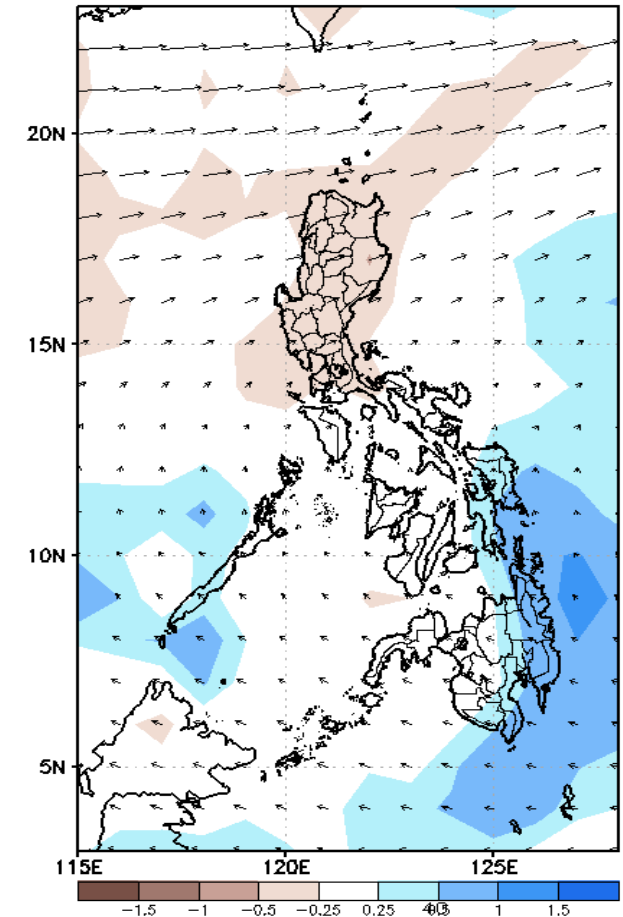
GEFS Week-1 850-hPa Divergence and Wind Anom
Valid: 20221216 - 20221222



GEFS Week-1 700-hPa Divergence and Wind Anom
Valid: 20221216 - 20221222



GEFS Week-1 200-hPa Divergence and Wind Anom
Valid: 20221216 - 20221222

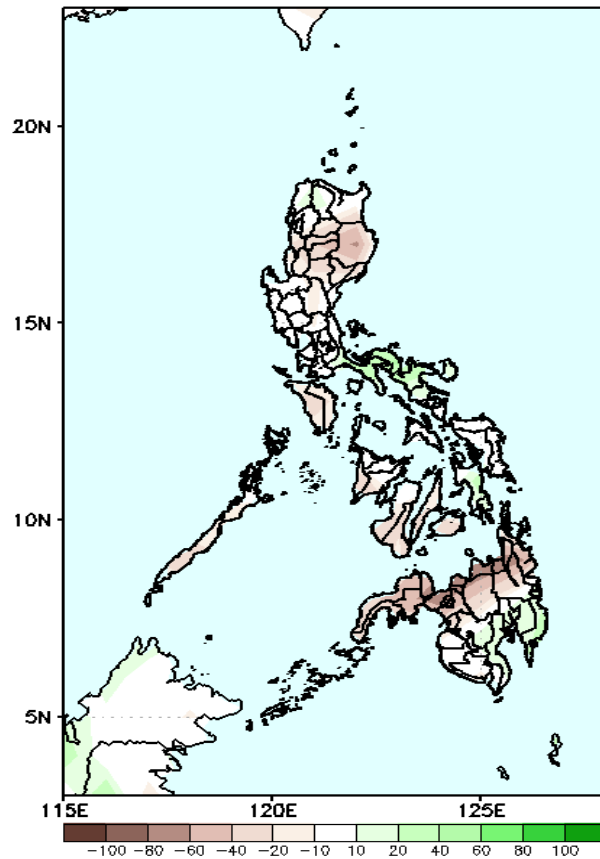


Northeast Monsoon is forecasted to continue affecting Northern and Central Luzon; Easterlies affecting the rest of the country during the forecast period.

Precipitation Anomaly and Exceedance Probability > 25/50 mm

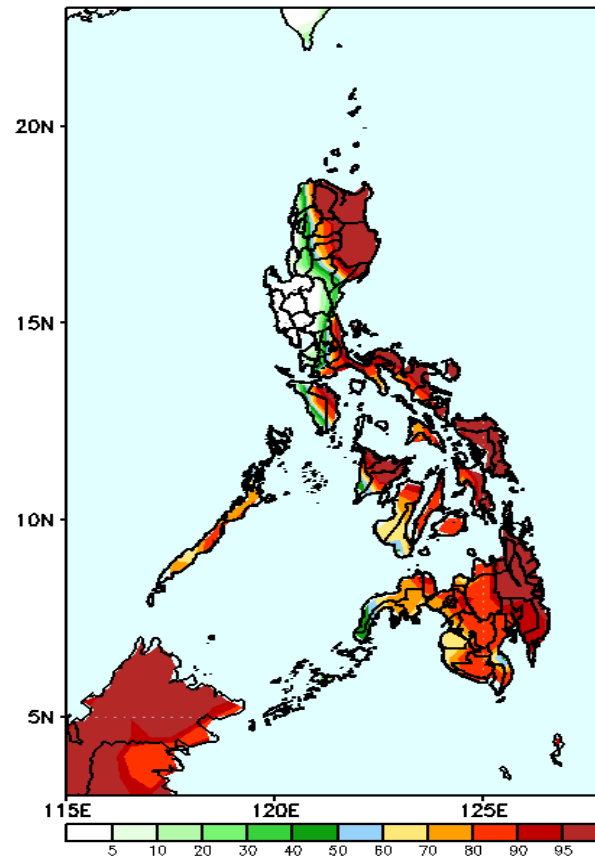
Week 1: Dec 16-22, 2022

GEFS Week-1 Precip Anomaly
Valid: 20221216 - 20221222



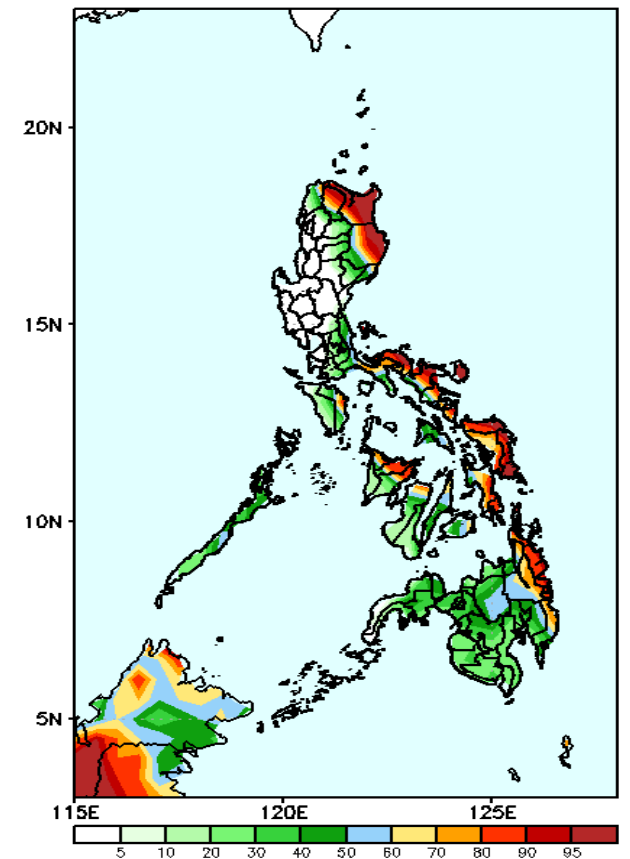
Rainfall deficit of 20-50mm in some areas in Luzon and Visayas and up to 90mm in northern Mindanao (including Zamboanga Peninsula) while 20-60mm increase of rainfall is forecasted in Bicol and Davao Region during the forecast period.

GEFS Week-1 Exceedance Prob. > 25mm
Valid: 20221216 - 20221222



High probability of rainfall to exceed 25mm in most parts of the country except Ilocos region and most parts of Central Luzon during the forecast period.

GEFS Week-1 Exceedance Prob. > 50mm
Valid: 20221216 - 20221222



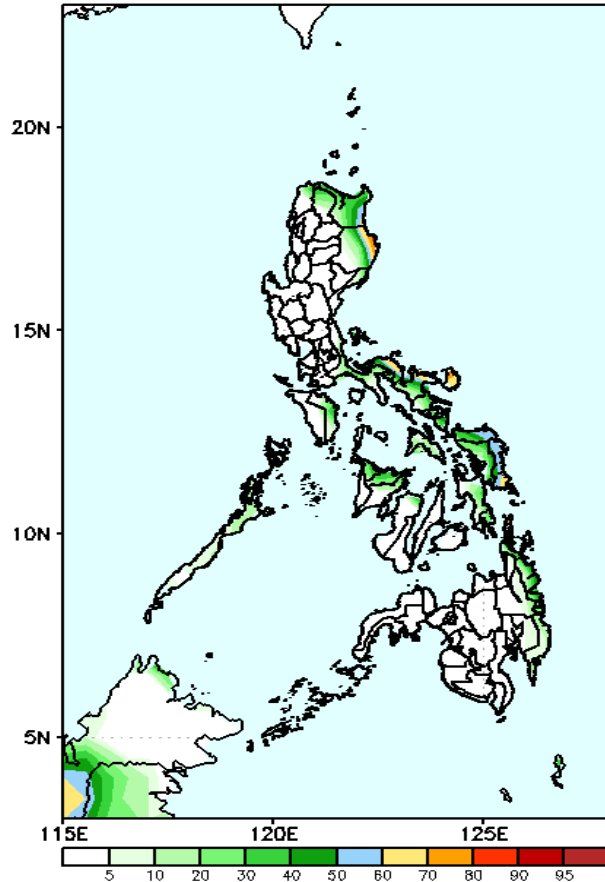
High probability of rainfall to exceed 50mm in the eastern sections of the country and in Apayao, Aklan and Capiz while less likely for the rest of the country during the forecast period.



Exceedance Probability > 100/150/200 mm

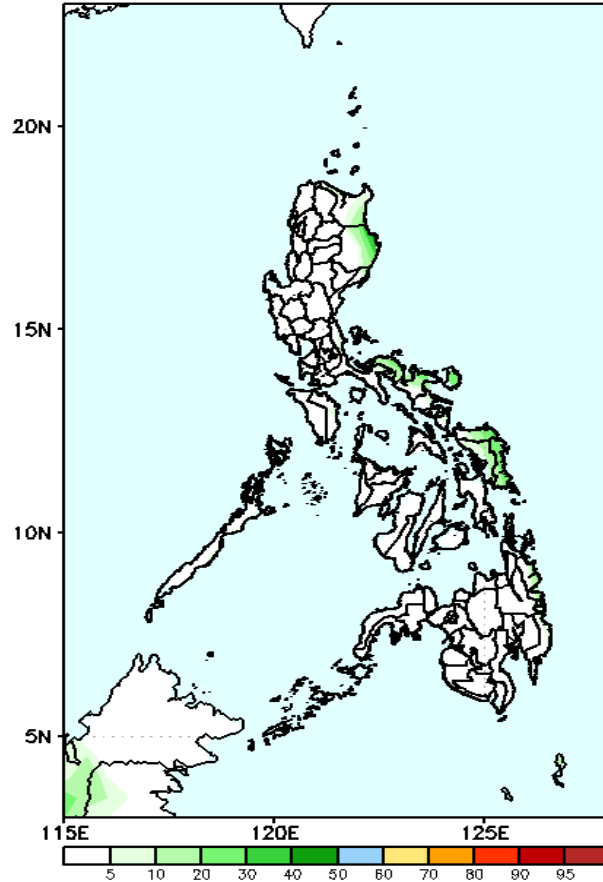
Week 1: Dec 16-22, 2022

GEFS Week-1 Exceedance Prob. > 100mm
Valid: 20221216 – 20221222



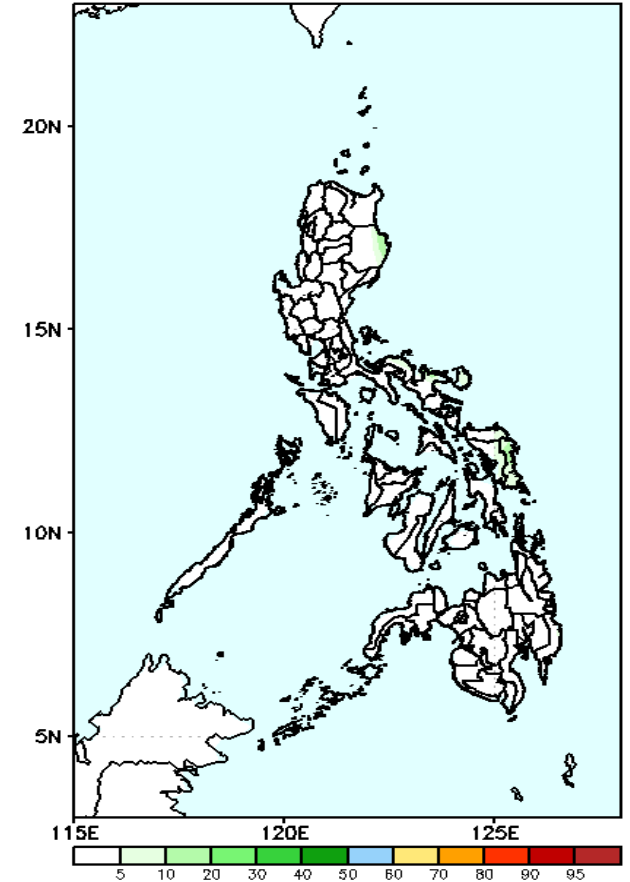
Low probability of rainfall to exceed 100mm in most parts of the country except some areas in some areas of Eastern Luzon, Bicol Region and Easter Samar during the forecast period.

GEFS Week-1 Exceedance Prob. > 150mm
Valid: 20221216 – 20221222



Low probability of rainfall to exceed 150mm in most parts of the country during the forecast period.

GEFS Week-1 Exceedance Prob. > 200mm
Valid: 20221216 – 20221222

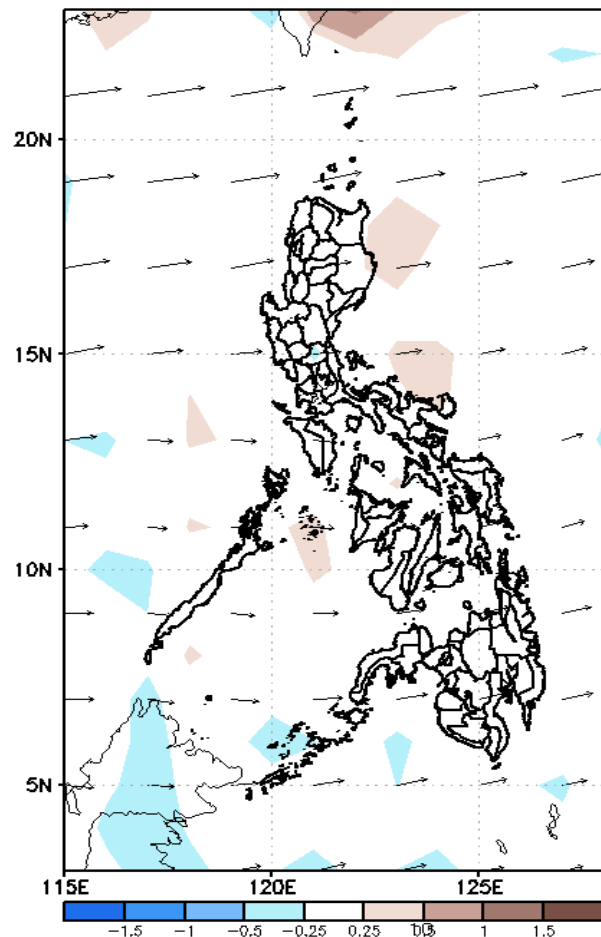


Low probability of rainfall to exceed 200mm in most parts of the country during the forecast period.

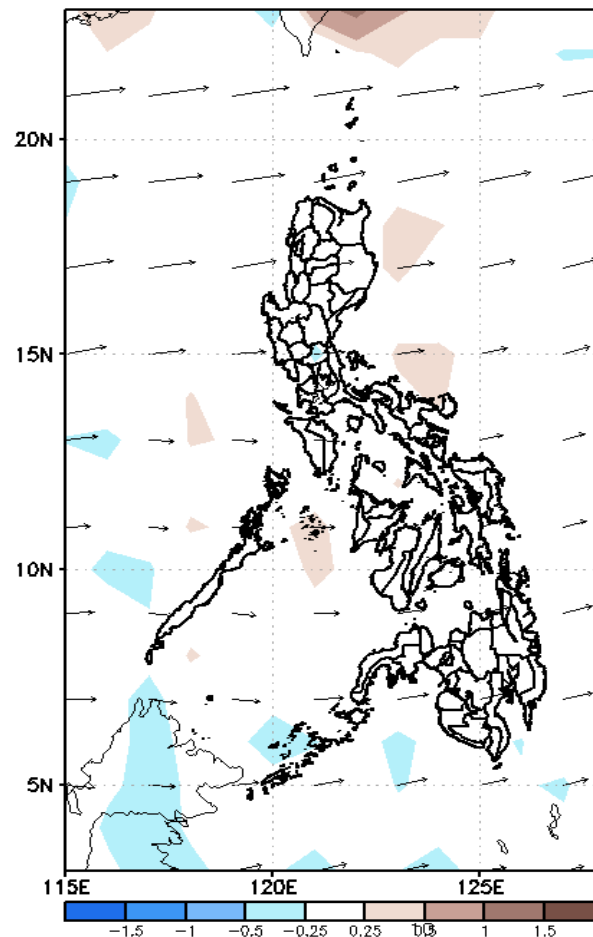
GEFS Week-2 Forecasts: Wind Anomaly Forecast

Week 2: Dec 23-29, 2022

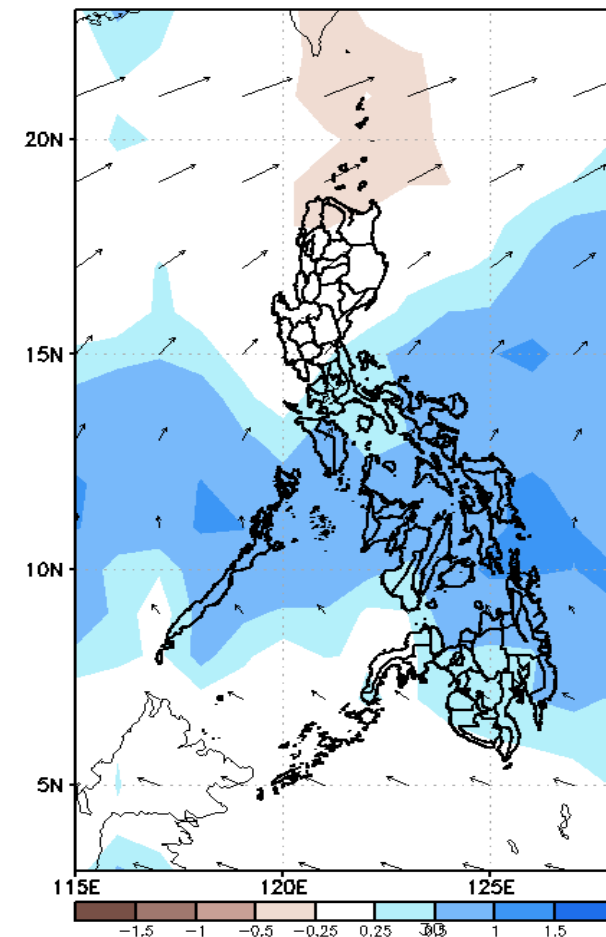
GEFS Week-2 850-hPa Divergence and Wind Anom
Valid: 20221223 - 20221229



GEFS Week-2 700-hPa Divergence and Wind Anom
Valid: 20221223 - 20221229



GEFS week-2 200-hPa Divergence and Wind Anom
Valid: 20221223 - 20221229

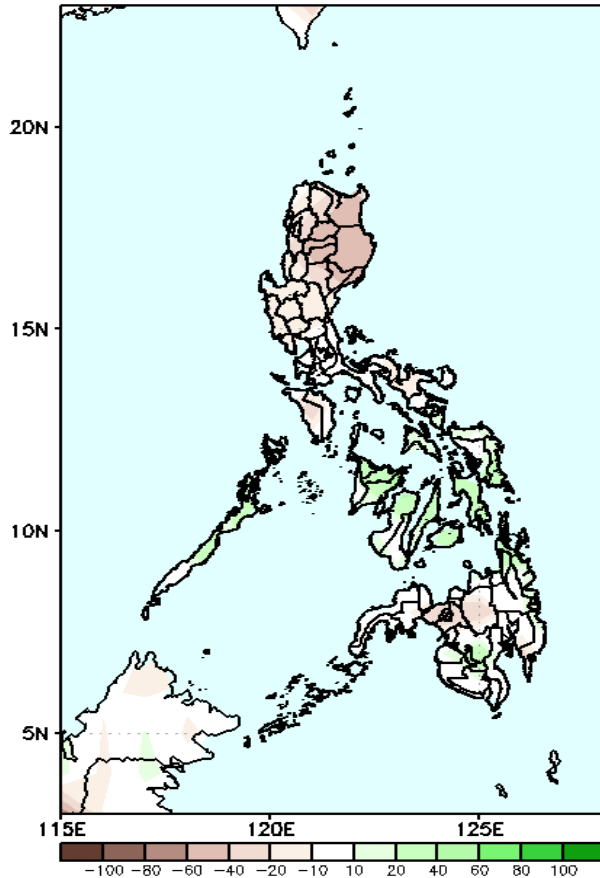


Northeast Monsoon will likely affect the eastern sections of Luzon; while Easterlies is forecasted to affect Visayas and Mindanao during the forecast period.

Precipitation Anomaly and Exceedance Probability > 25/50 mm

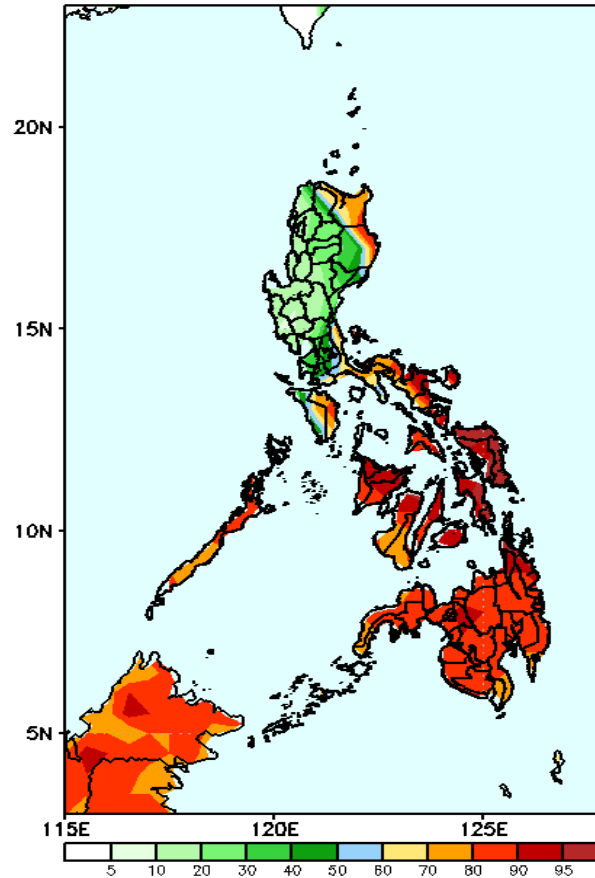
Week 2: Dec 23-29, 2022

GEFS Week-2 Precip Anomaly
Valid: 20221223 - 20221229



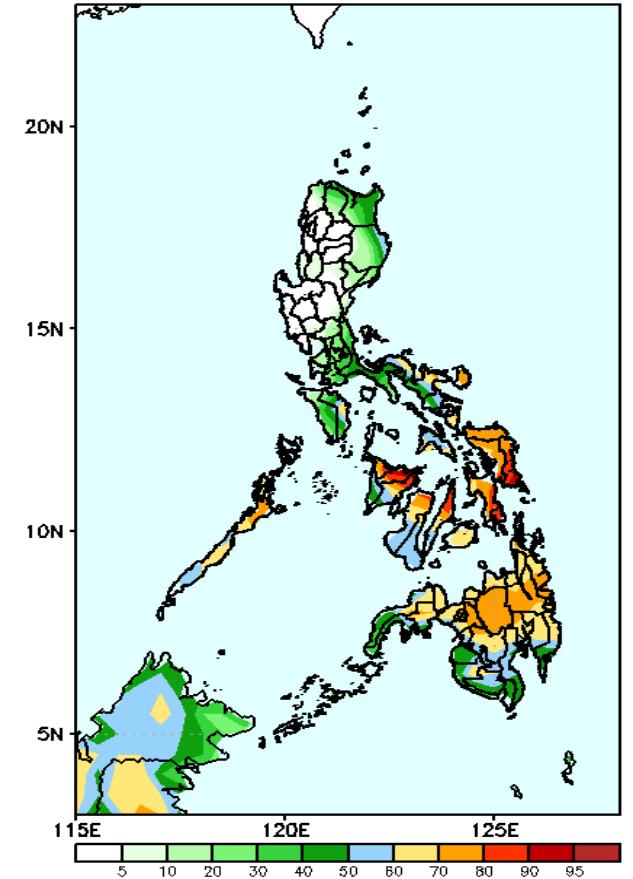
Rainfall deficit of 40-70mm is expected in most parts of CAR & Cagayan Valley while 40-70mm increase of rainfall in most of Visayas during the forecast period.

GEFS Week-2 Exceedance Prob. > 25mm
Valid: 20221223 - 20221229



High probability of rainfall to exceed 25mm in the eastern sections of the country and in parts of Visayas and Mindanao while less likely for the rest of Luzon during the forecast period.

GEFS Week-2 Exceedance Prob. > 50mm
Valid: 20221223 - 20221229

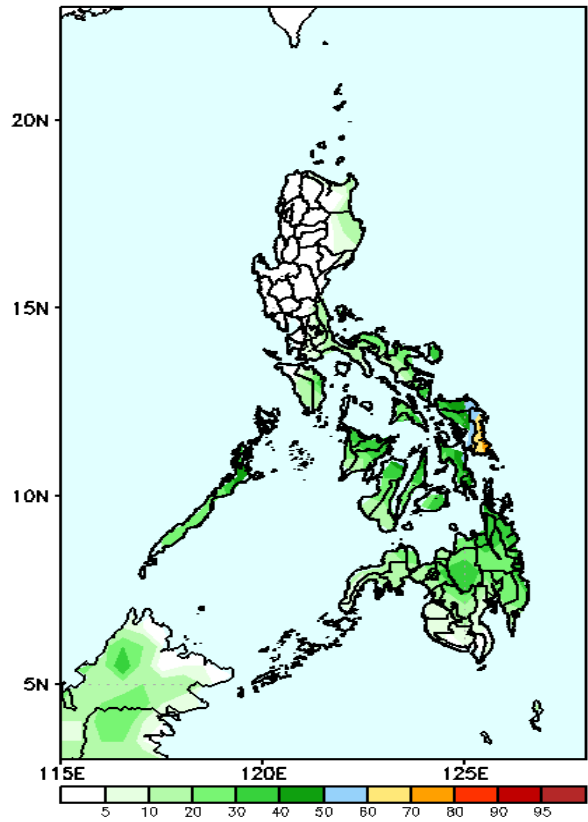


High probability of rainfall to exceed 50mm in some areas in Bicol Region, Palawan and in Visayas and Mindanao while less likely for the rest of Luzon during the forecast period.

Exceedance Probability > 100/150/200 mm

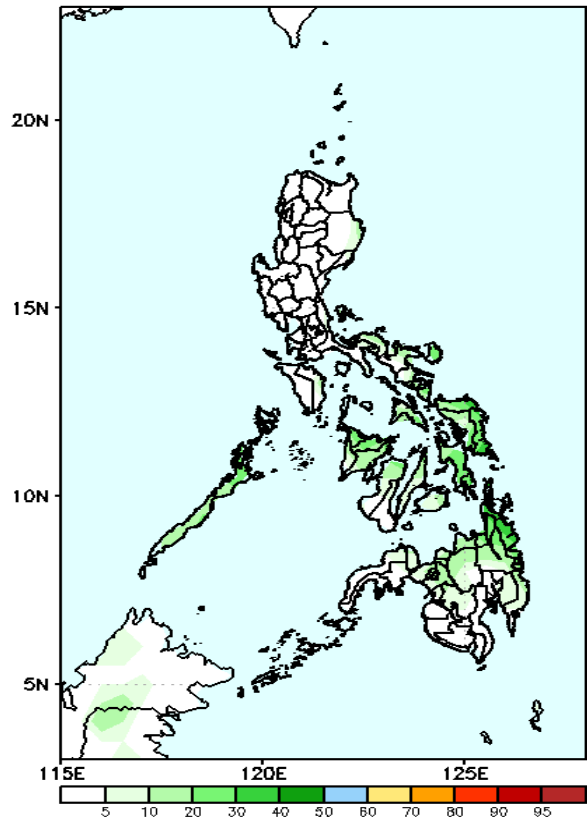
Week 2: Dec 23-29, 2022

GEFS Week-2 Exceedance Prob. > 100mm
Valid: 20221223 - 20221229



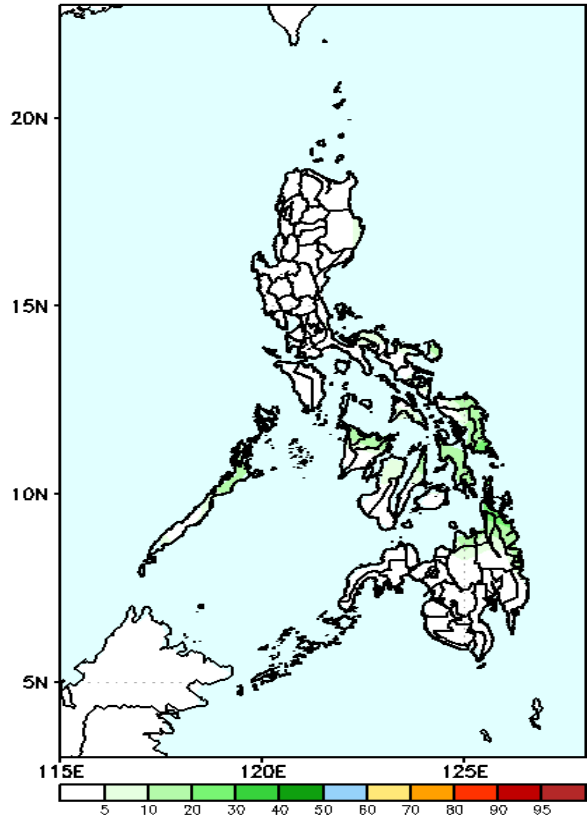
Low probability of rainfall to exceed 100mm in most parts of the country except Eastern Samar during the forecast period.

GEFS Week-2 Exceedance Prob. > 150mm
Valid: 20221223 - 20221229



Low probability of rainfall to exceed 150mm in most parts of the country during the forecast period.

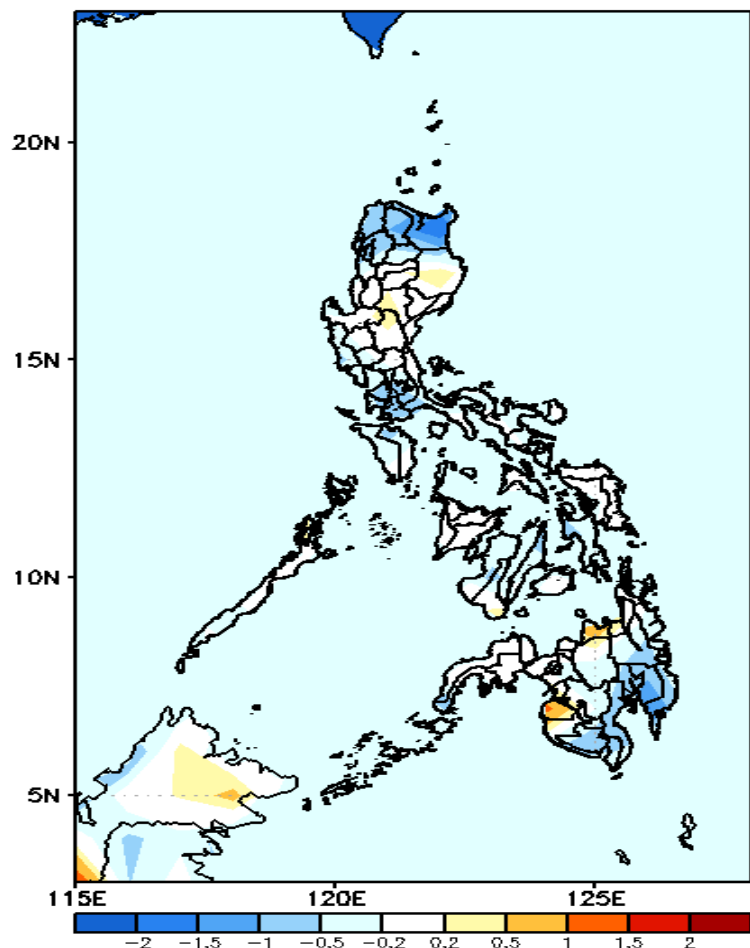
GEFS Week-2 Exceedance Prob. > 200mm
Valid: 20221223 - 20221229



Low probability of rainfall to exceed 200mm in most parts of the country during the forecast period.

GEFS Week-1 & 2 Forecasts: T2m Anomaly

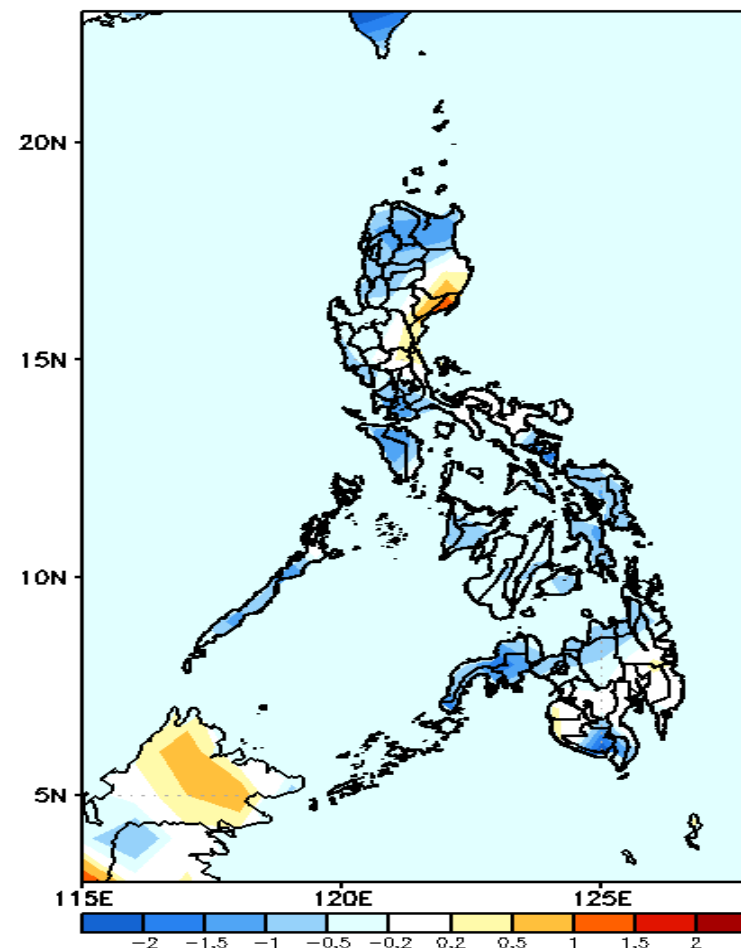
GEFS Week-1 T2m Anomaly
Valid: 20221216 — 20221222



2m Temperature Week 1: Dec 16-22, 2022

Slightly cooler to cooler than average surface air temperature will likely experience in some areas in northern and southern Luzon and southern Mindanao while average to slightly warmer is forecasted for the rest of the country during the forecast period.

GEFS Week-2 T2m Anomaly
Valid: 20221223 — 20221229



2m Temperature Week 2: Dec 23-29, 2022

Slightly cooler to cooler than average surface air temperature will likely experience in most parts of the country except in Isabela, some areas in Central Luzon and eastern Mindanao where average to slightly warmer temperature is more likely.