



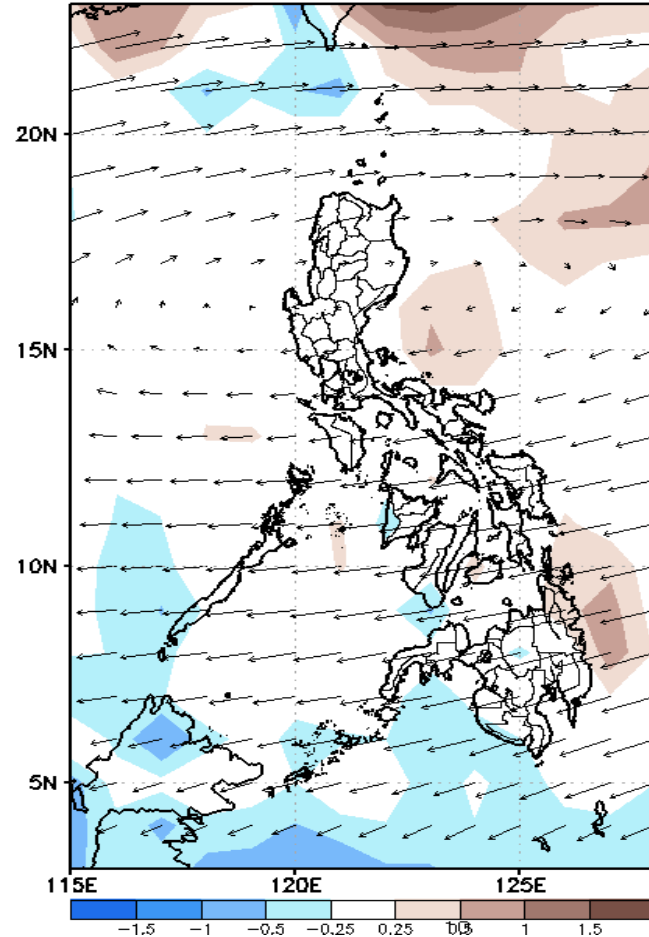
# Week 1 & Week 2 Forecast for the Philippines using GEFS Model



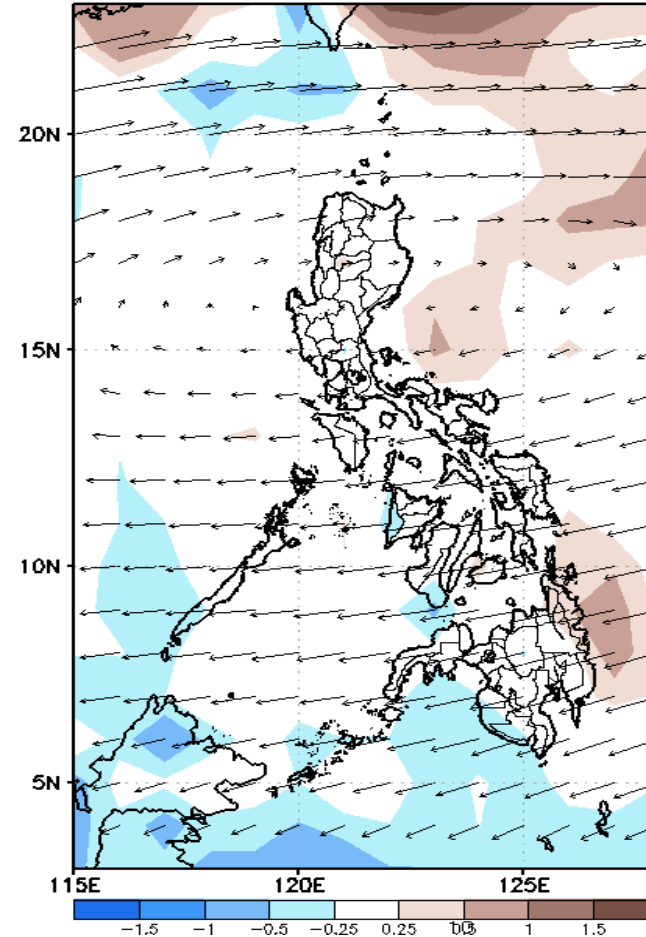
# GEFS Week-1 Forecasts: Divergence & Wind Anomaly

Week 1: Feb 16-22, 2022

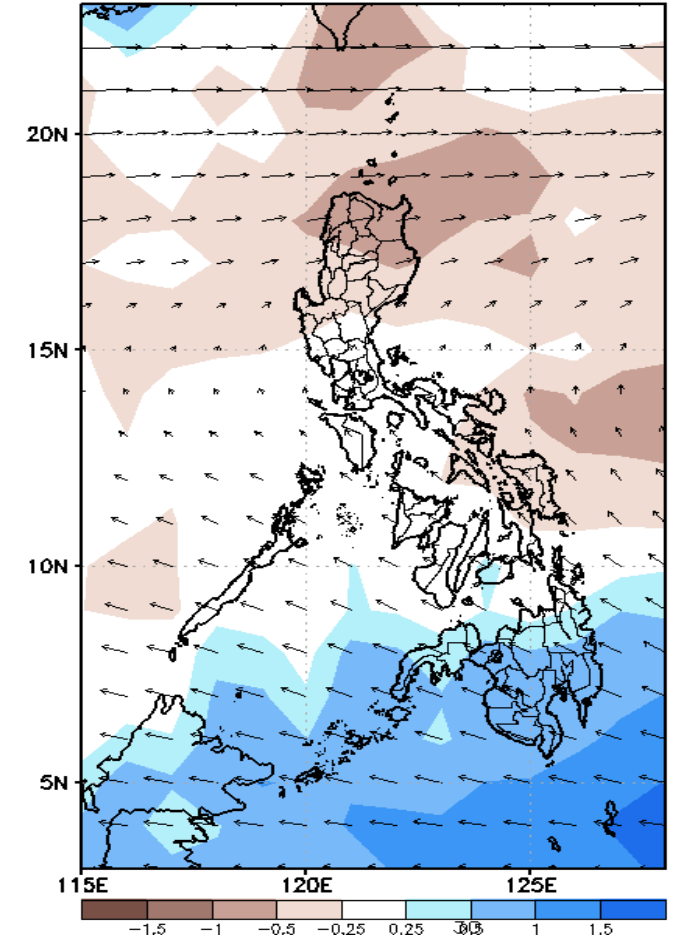
GEFS Week-1 850-hPa Divergence and Wind Anom  
Valid: 20220216 - 20220222



GEFS Week-1 700-hPa Divergence and Wind Anom  
Valid: 20220216 - 20220222



GEFS Week-1 200-hPa Divergence and Wind Anom  
Valid: 20220216 - 20220222

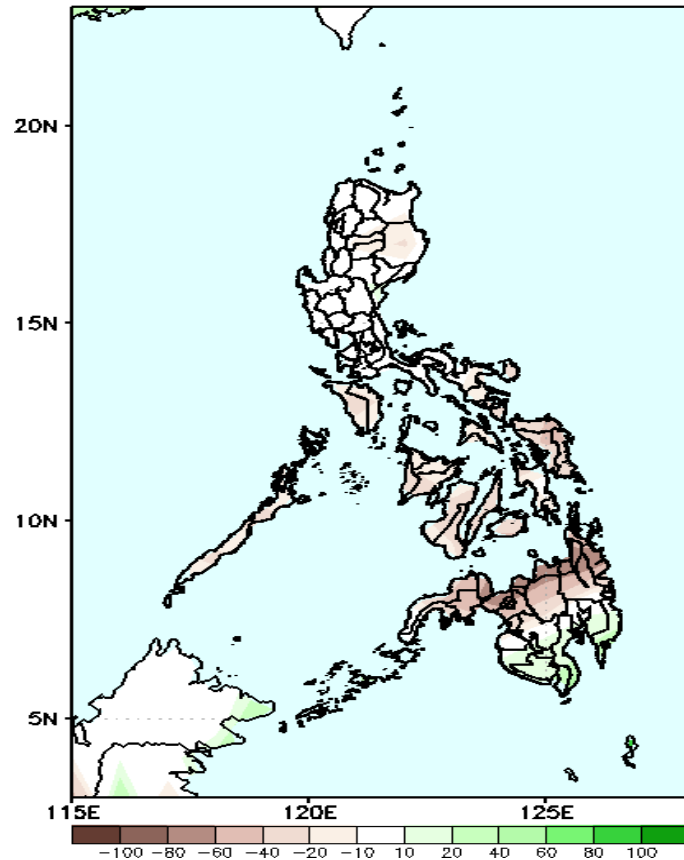


Upper and low level Divergence suggest a likelihood of light to moderate precipitation in Cebu and most parts of Mindanao. Easterlies affecting the rest of the country during the forecast period.

# Precipitation Anomaly and Exceedance Probability > 25/50 mm

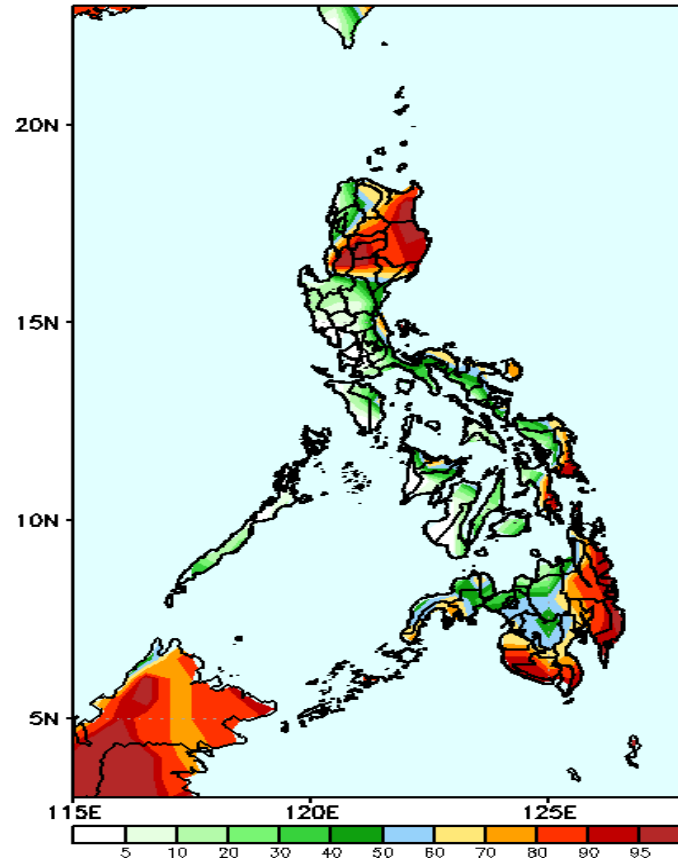
Week 1: Feb 16-22, 2022

GEFS Week-1 Precip Anomaly  
Valid: 20220216 - 20220222



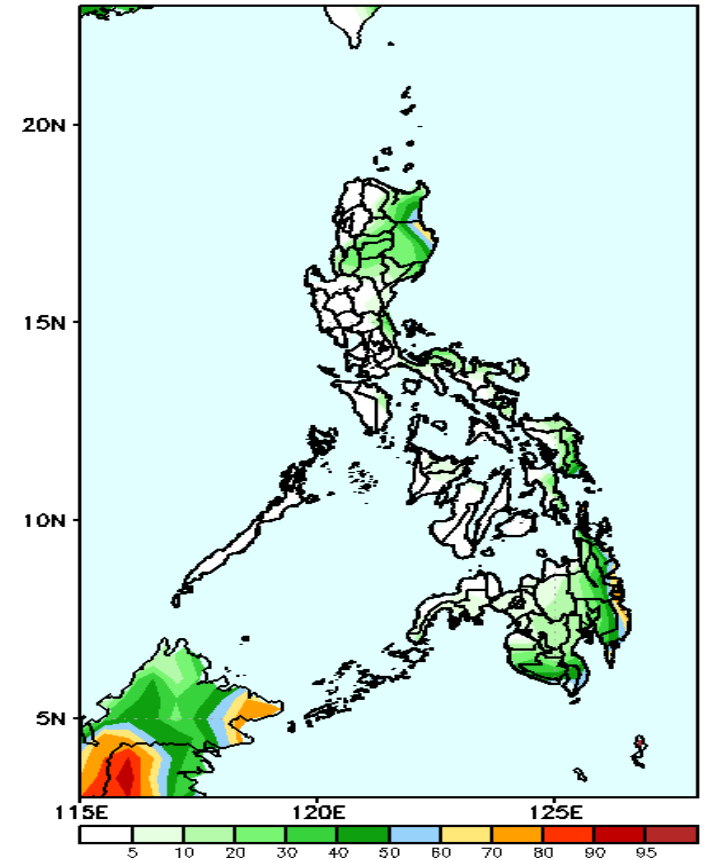
Rainfall deficit of 30-70mm in northern Mindanao is expected during the forecast period.

GEFS Week-1 Exceedance Prob. > 25mm  
Valid: 20220216 - 20220222



High probability of rainfall to exceed 25mm in most parts of Northern Luzon, Eastern Samar, Southern Leyte, Eastern Mindanao, Maguindanao and most parts of SOCCSKARGEN while less likely for the rest of the country during the forecast period.

GEFS Week-1 Exceedance Prob. > 50mm  
Valid: 20220216 - 20220222

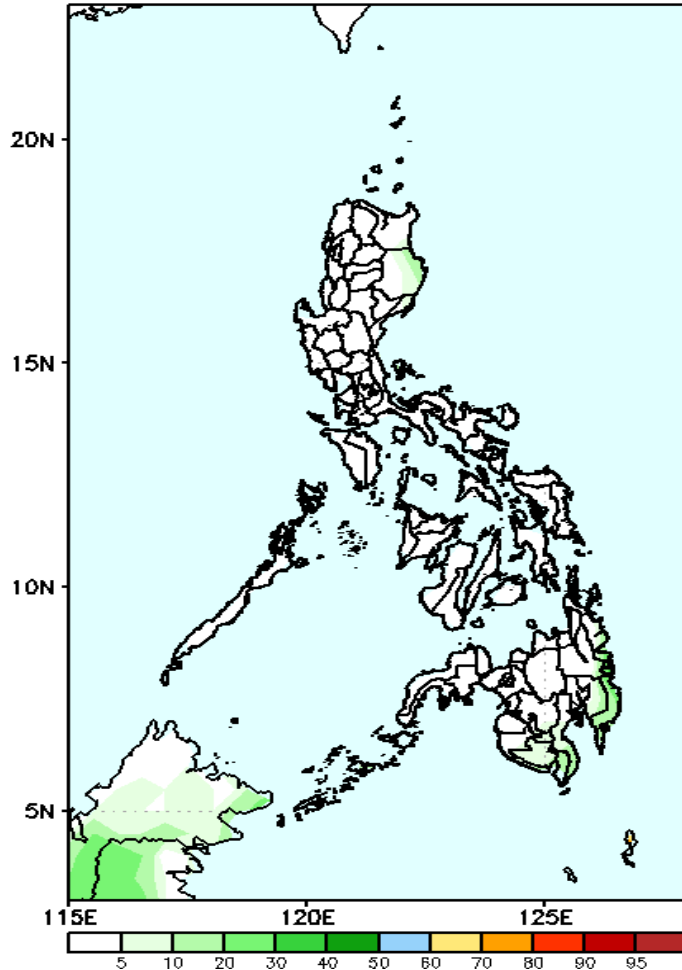


Low probability of rainfall to exceed 50mm in most parts of the country during the forecast period.

# Exceedance Probability > 100/150/200 mm

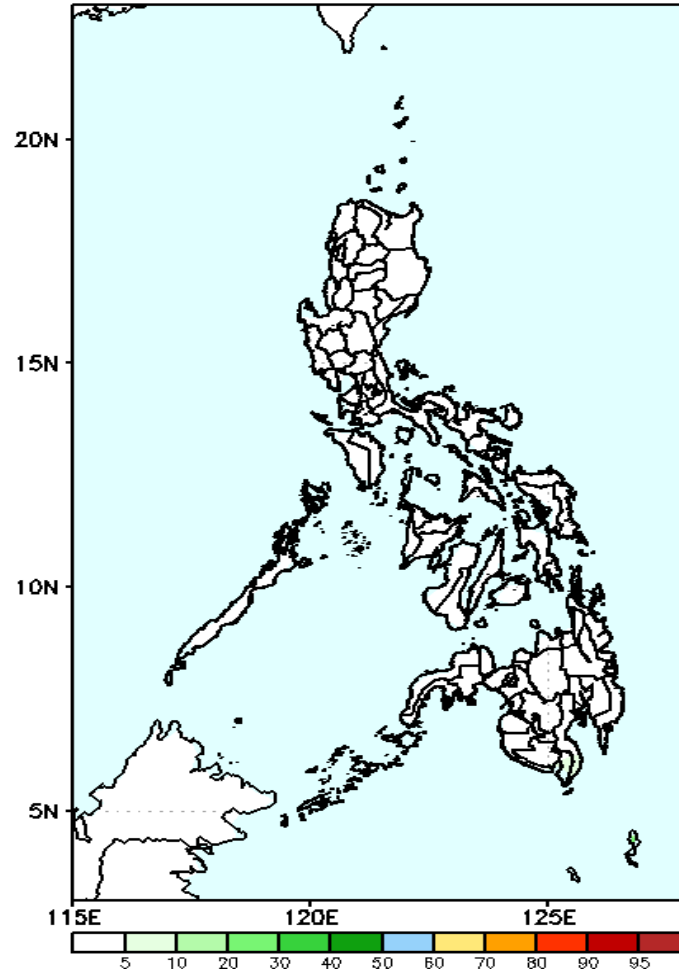
## Week 1: Feb 16-22, 2022

GEFS Week-1 Exceedance Prob. > 100mm  
Valid: 20220216 – 20220222



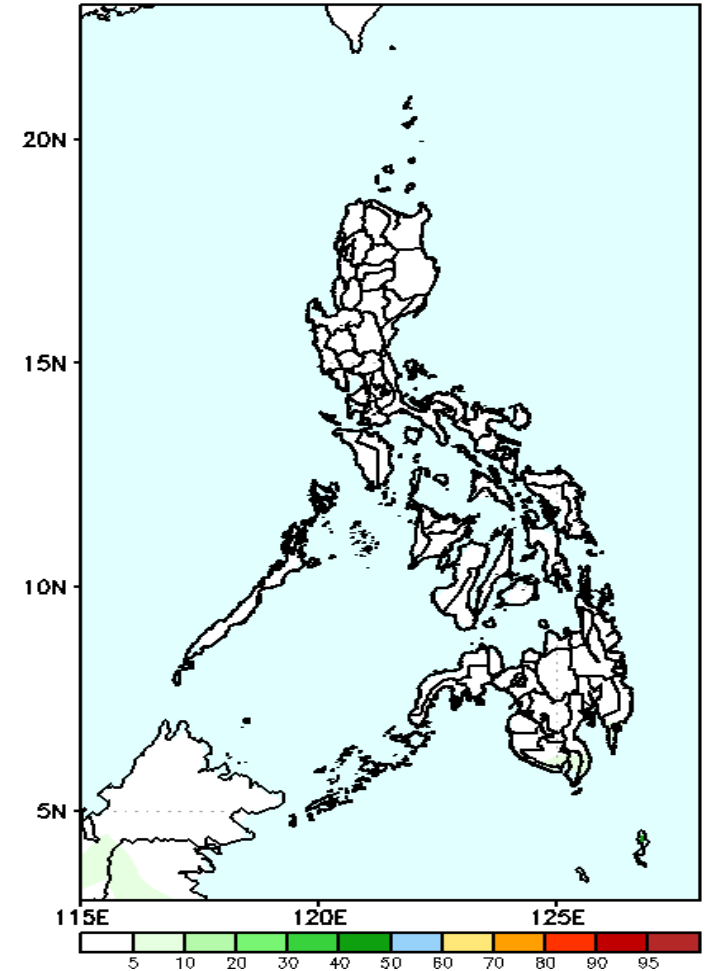
Low probability of rainfall to exceed 100mm in most parts of the country during the forecast period.

GEFS Week-1 Exceedance Prob. > 200mm  
Valid: 20220216 – 20220222



Low probability of rainfall to exceed 150mm in most parts of the country during the forecast period.

GEFS Week-1 Exceedance Prob. > 150mm  
Valid: 20220216 – 20220222

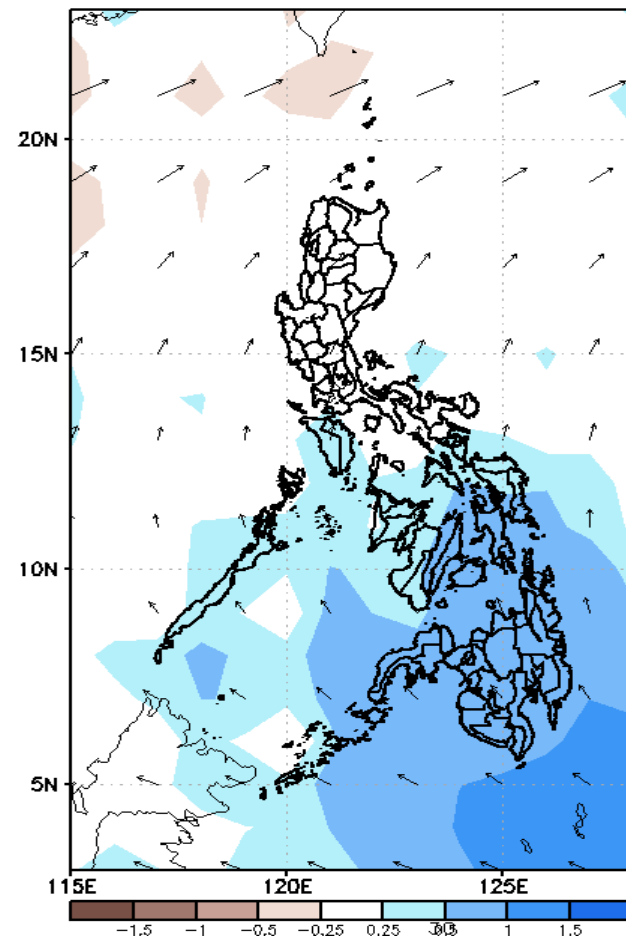
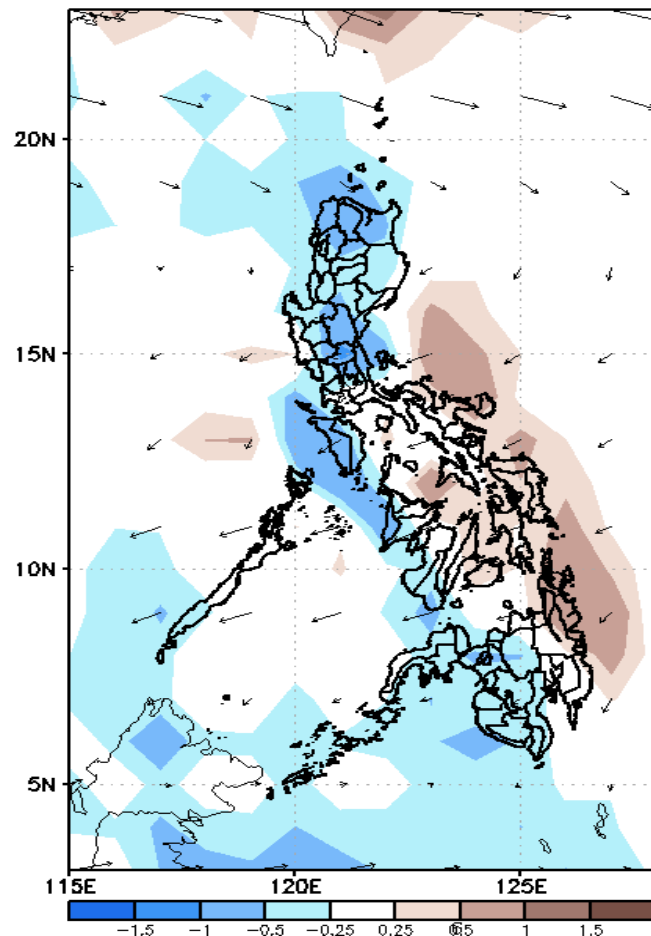
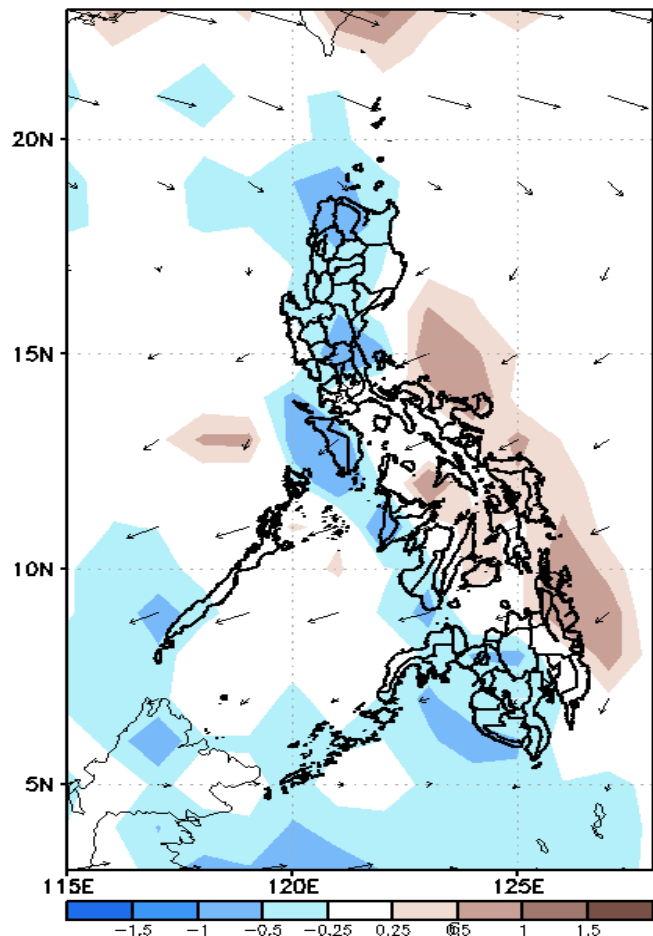


Low probability of rainfall to exceed 200mm in most parts of the country during the forecast period.

# GEFS Week-2 Forecasts: Divergence & Wind Anomaly

**Week 2: Feb 23- Mar 01, 2022**

GEFS Week-2 850-hPa Divergence and Wind Anom  
Valid: 20220223 - 20220301



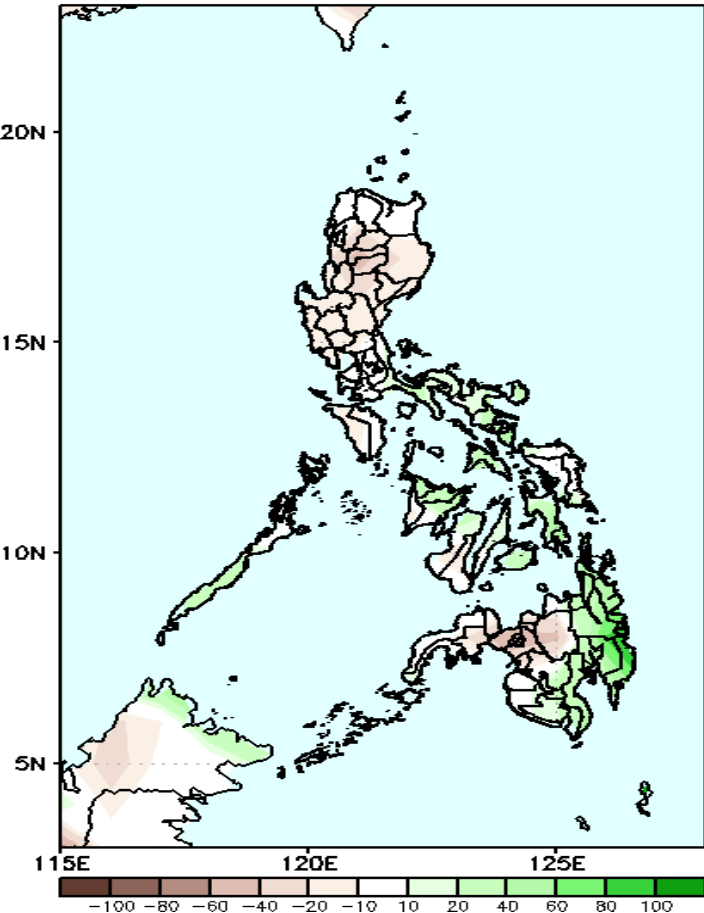
Upper and low level Divergence suggest a likelihood of light to moderate precipitation in Sorsogon, MIMAROPA and most parts of Visayas and Mindanao. Northeast Monsoon affecting Northern Luzon while Easterlies affecting the rest of the country during the forecast period.



# Precipitation Anomaly and Exceedance Probability > 25/50 mm

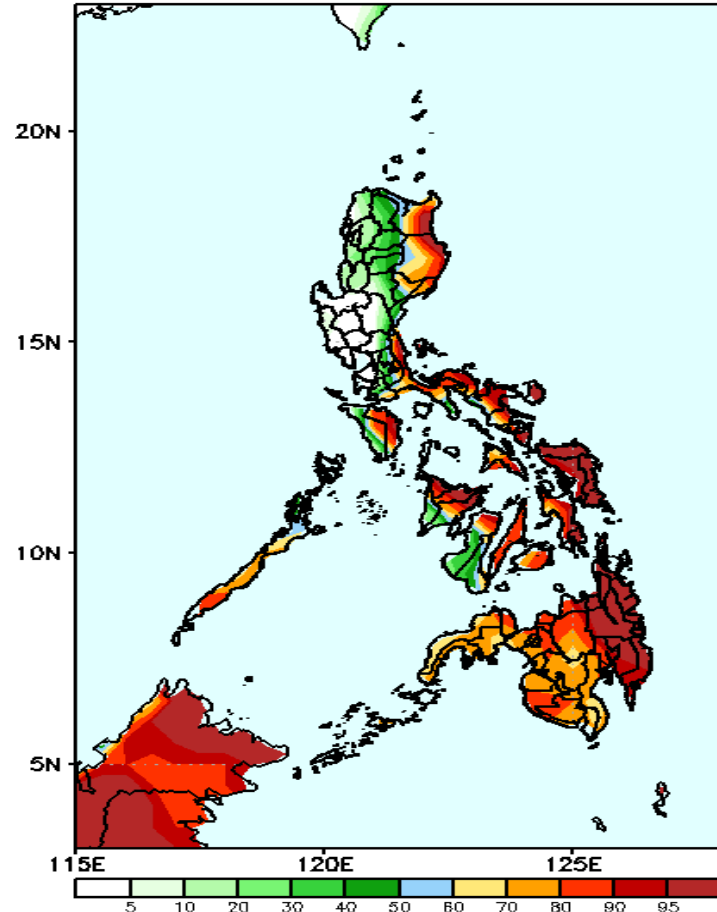
**Week 2: Feb 23- Mar 01, 2022**

GEFS Week-2 Precip Anomaly  
Valid: 20220223 - 20220301



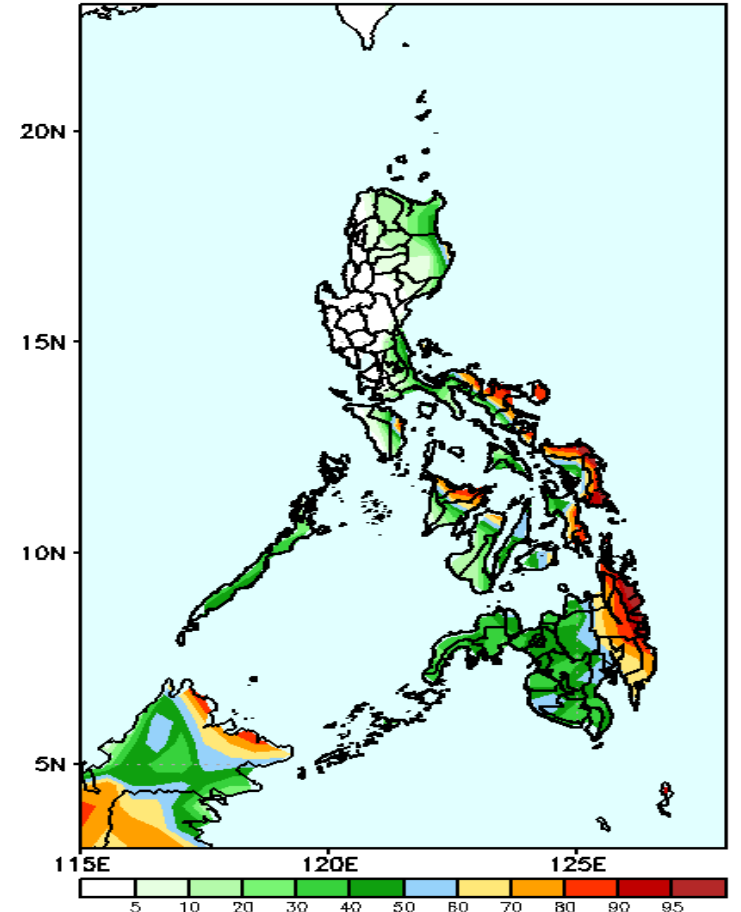
Increase of rainfall of up to 70mm in eastern Mindanao is expected during the forecast period.

GEFS Week-2 Exceedance Prob. > 25mm  
Valid: 20220223 - 20220301



High probability of rainfall to exceed 25mm in most part of Eastern Luzon, MIMAROPA, most parts of Visayas and most of Mindanao while less likely for the rest of the country during the forecast period.

GEFS Week-2 Exceedance Prob. > 50mm  
Valid: 20220223 - 20220301

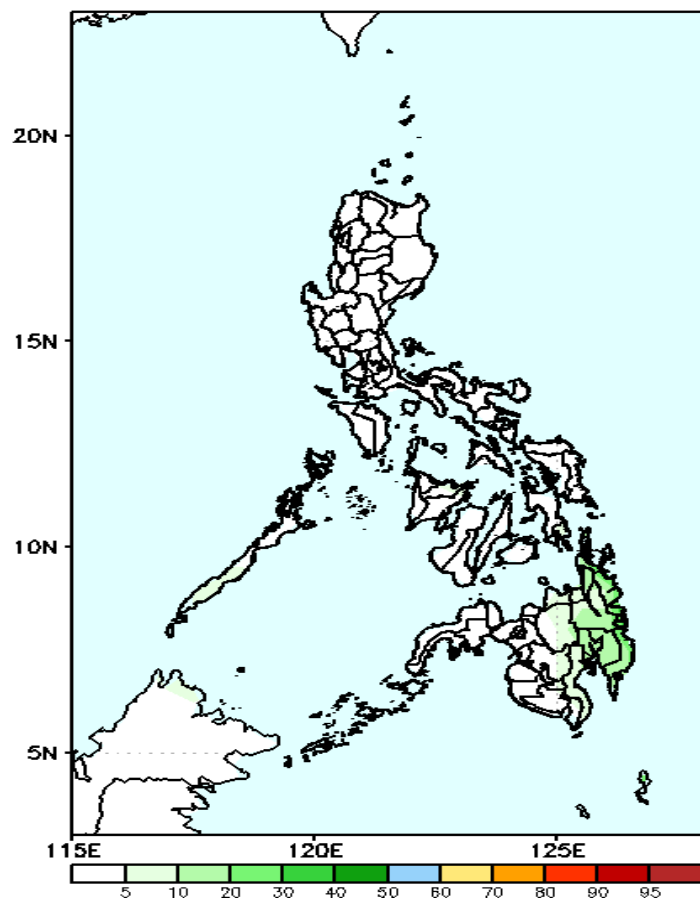


60–80% probability of rainfall to exceed 50mm in most parts of Bicol Region, Eastern Visayas, Aklan, Capiz and most parts of CARAGA while less likely for the rest of the country during the forecast period

# Exceedance Probability > 100/150/200 mm

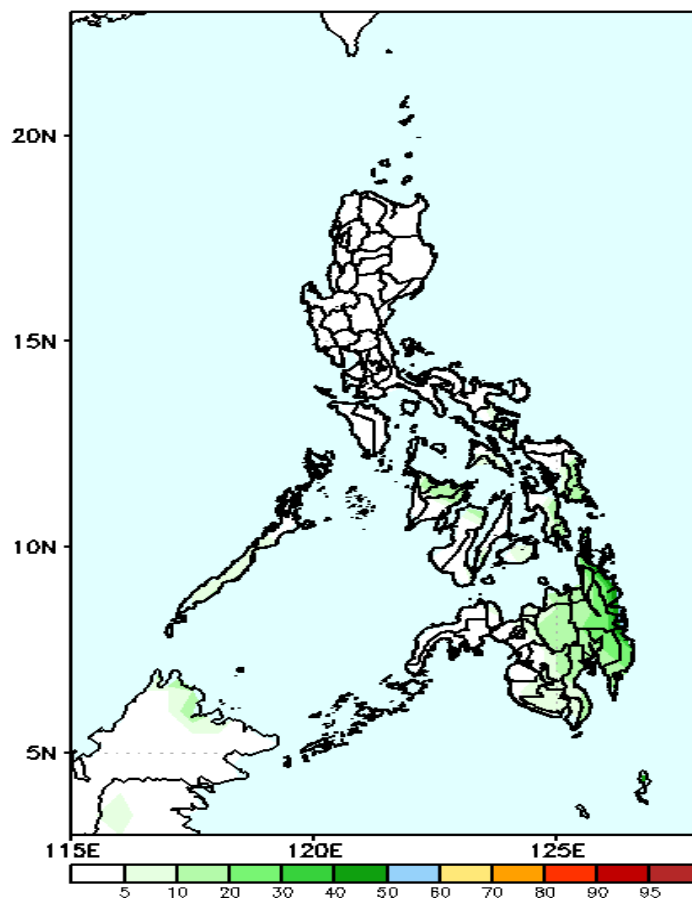
**Week 2: Feb 23- Mar 01, 2022**

GEFS Week-2 Exceedance Prob. > 200mm  
Valid: 20220223 - 20220301



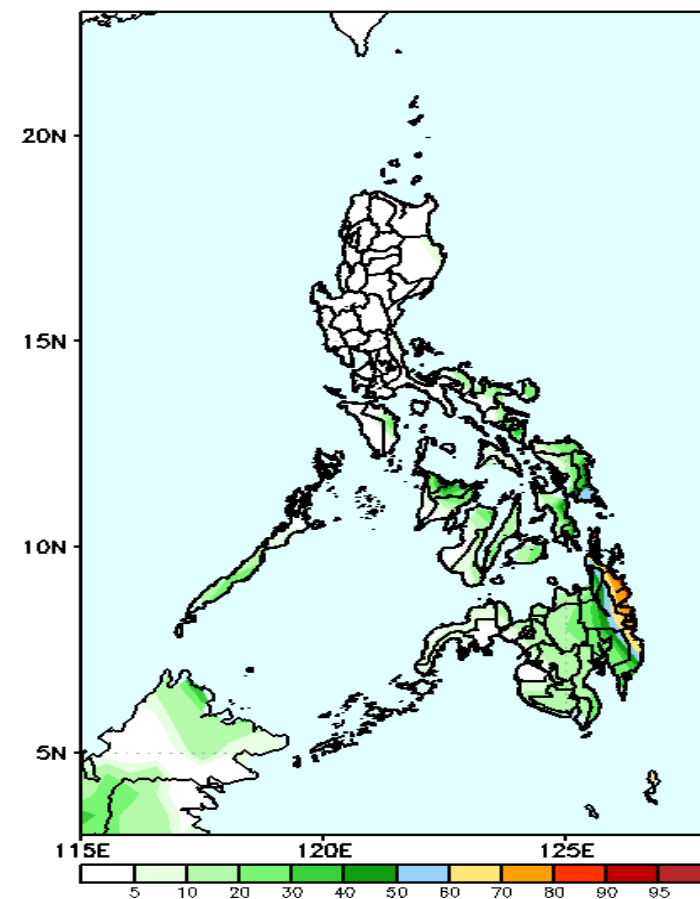
Low probability of rainfall to exceed 100mm in most parts of the country during the forecast period.

GEFS Week-2 Exceedance Prob. > 150mm  
Valid: 20220223 - 20220301



Low probability of rainfall to exceed 150mm in most parts of the country during the forecast period.

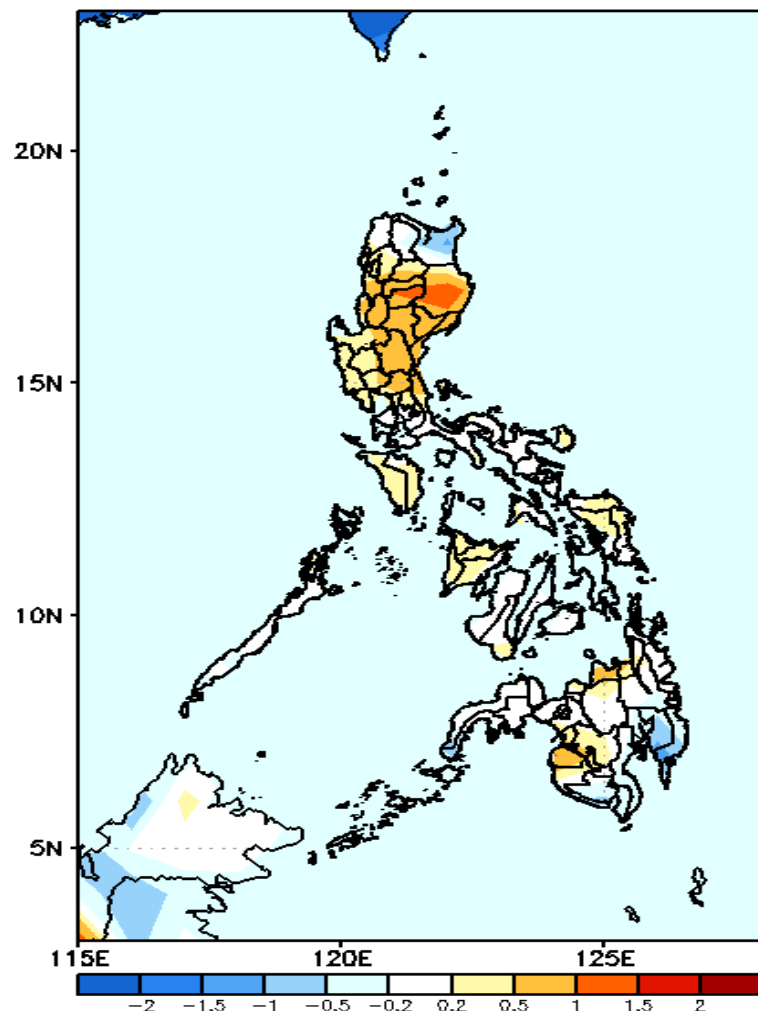
GEFS Week-2 Exceedance Prob. > 100mm  
Valid: 20220223 - 20220301



Low probability of rainfall to exceed 200mm in most parts of the country during the forecast period.

# GEFS Week-1 & 2 Forecasts: T2m Anomaly

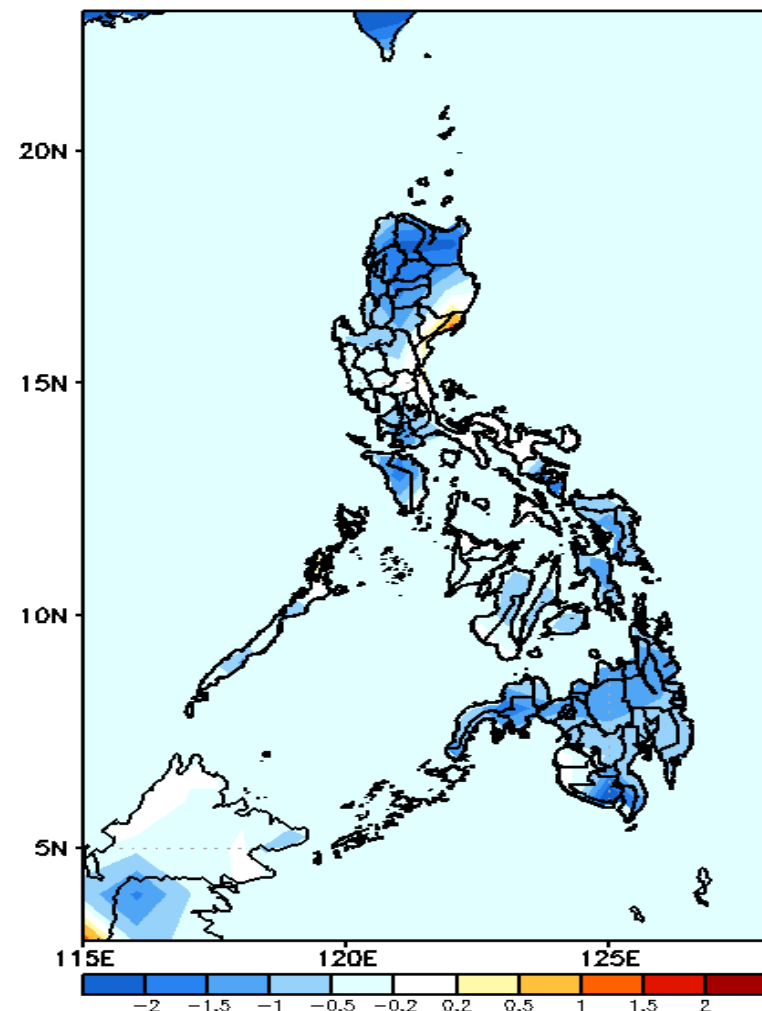
GEFS Week-1 T2m Anomaly  
Valid: 20220216 – 20220222



**2m Temperature Week 1: Feb 16-22, 2022**

Warmer than average surface air temperature will likely experience in most parts of Luzon while average to slightly cooler for the rest of the country during the forecast period.

GEFS Week-2 T2m Anomaly  
Valid: 20220223 – 20220301



**2m Temperature Week 2: Feb 23- Mar 01, 2022**

Cooler than average surface air temperature will likely experience in most parts of the country during the forecast period.