



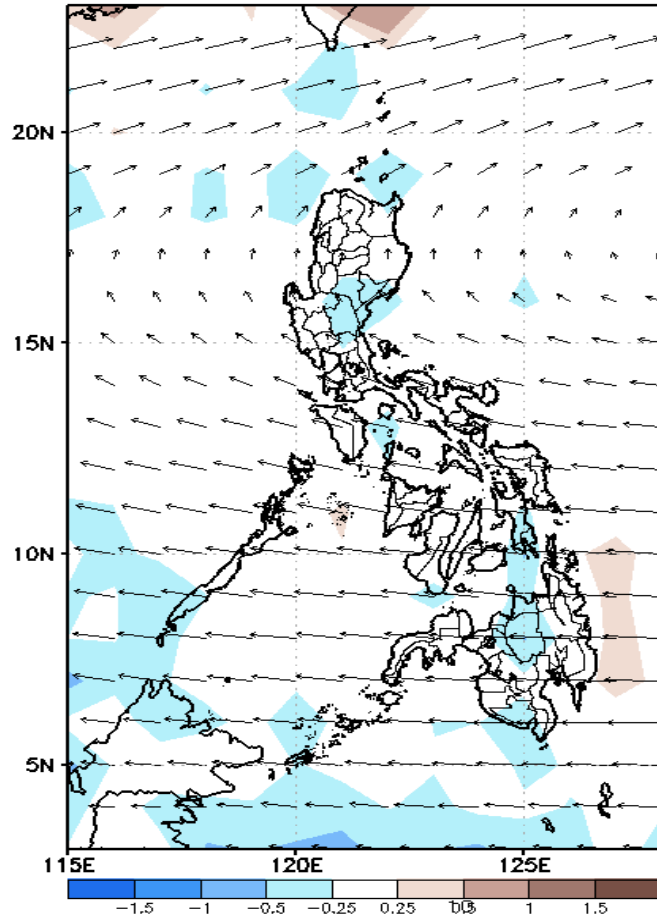
# Week 1 & Week 2 Forecast for the Philippines using GEFS Model



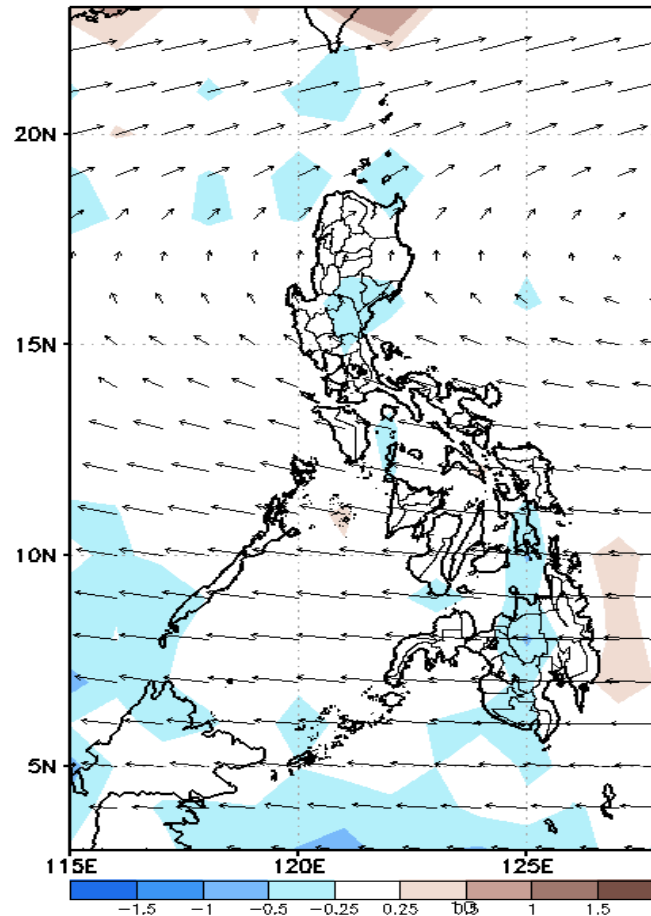
# GEFS Week-1 Forecasts: Divergence & Wind Anomaly

Week 1: Mar 16-22, 2022

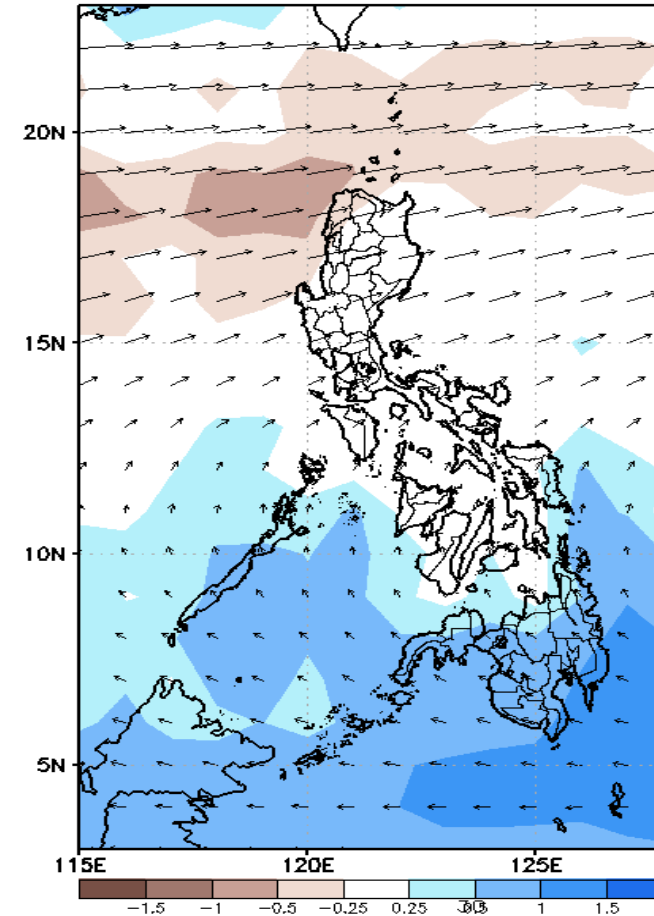
GEFS Week-1 850-hPa Divergence and Wind Anom  
Valid: 20220316 - 20220322



GEFS Week-1 700-hPa Divergence and Wind Anom  
Valid: 20220316 - 20220322



GEFS Week-1 200-hPa Divergence and Wind Anom  
Valid: 20220316 - 20220322

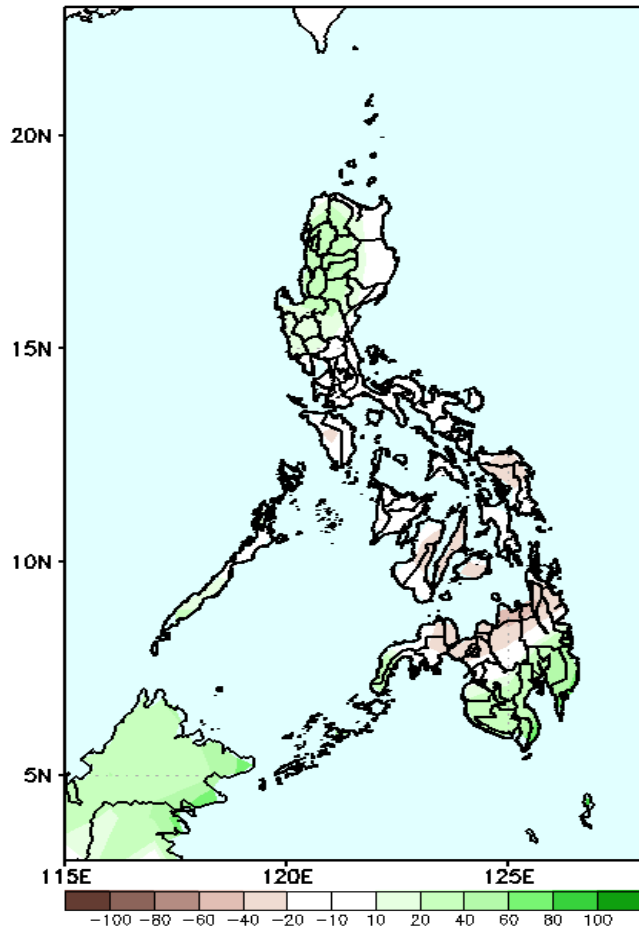


Upper and low level Divergence suggest a likelihood of light to moderate precipitation in Palawan, some parts of Visayas and most parts of Mindanao. Easterlies affecting most parts of the country attributing to warmer temperatures during the forecast period.

# Precipitation Anomaly and Exceedance Probability > 25/50 mm

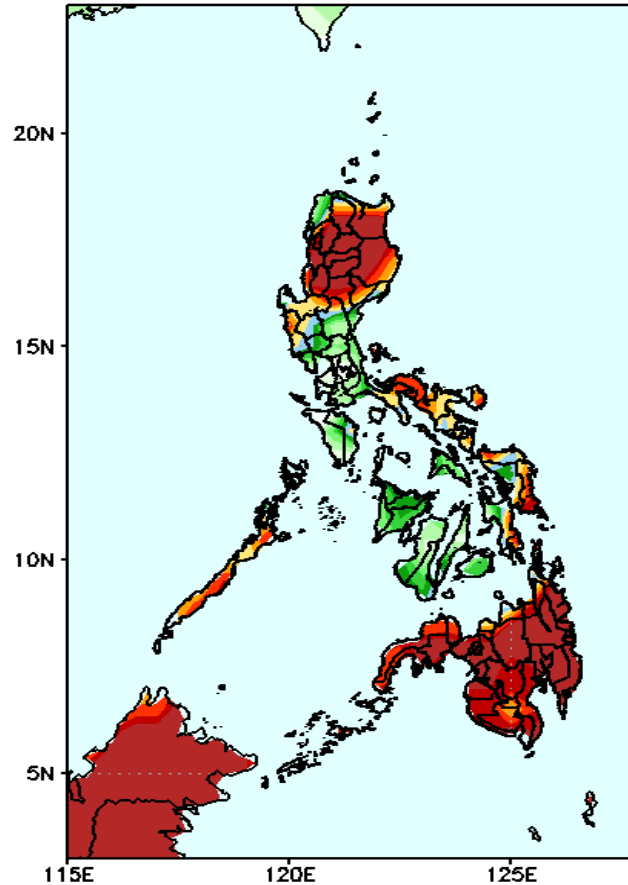
**Week 1: Mar 16-22, 2022**

GEFS Week-1 Precip Anomaly  
Valid: 20220316 - 20220322



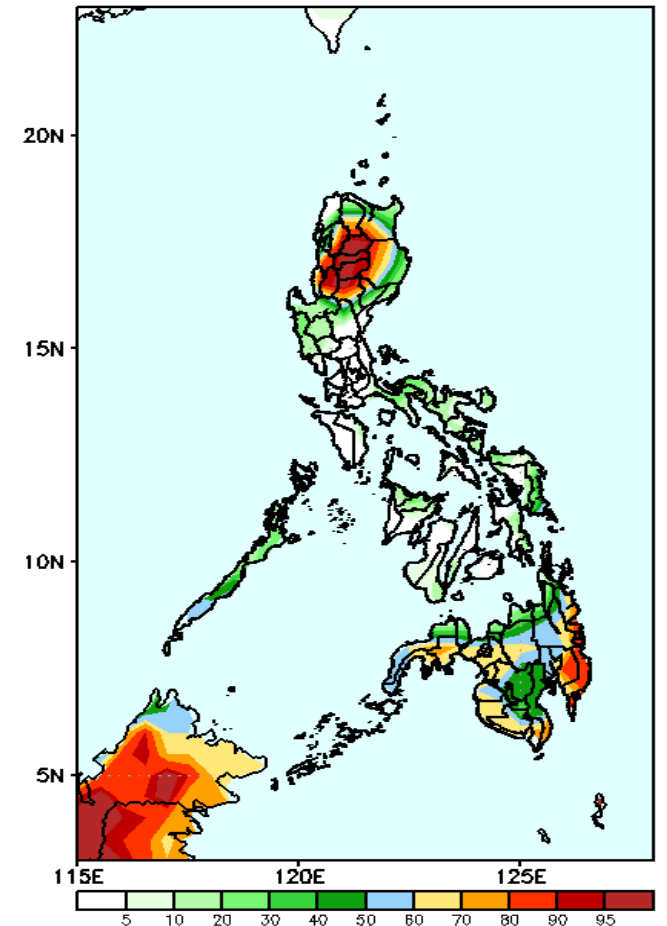
Increase of rainfall of 20-40mm in Western Luzon and Southern Mindanao while 20-50mm rainfall deficit for the rest of the country during the forecast period.

GEFS Week-1 Exceedance Prob. > 25mm  
Valid: 20220316 - 20220322



High probability of rainfall to exceed 25mm in most parts of Ilocos & Cordillera Region, Cagayan Valley, Zambales, parts of Quezon & Palawan, Camarines Norte, Catanduanes, Eastern Samar, Southern Leyte and most parts of Mindanao while less likely for the rest of the country during the forecast period.

GEFS Week-1 Exceedance Prob. > 50mm  
Valid: 20220316 - 20220322

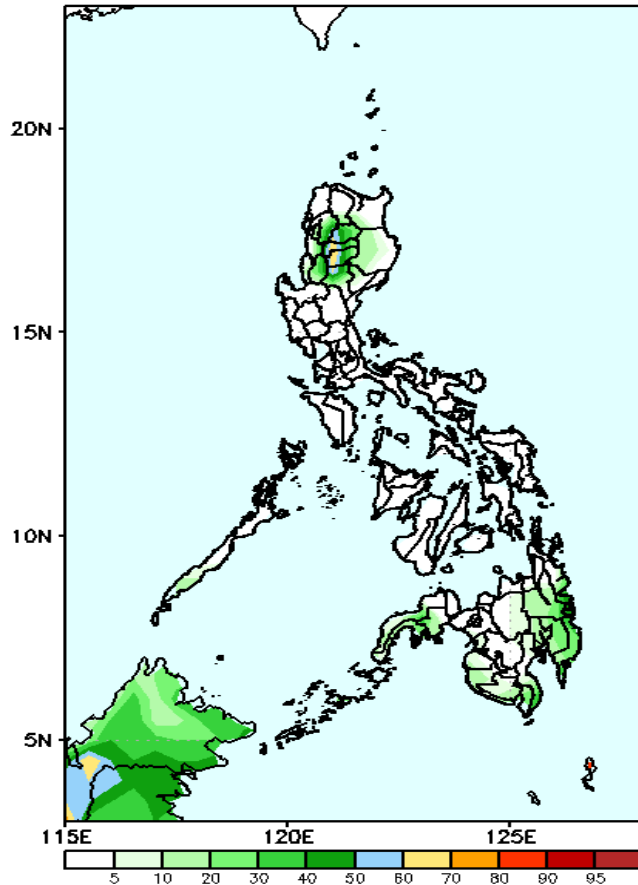


High probability of rainfall to exceed 50mm in most parts of Cordillera Region, western Cagayan & Isabela, Ilocos Sur, Nueva Viscaya, Surigao del Sur, Compostela Valley and Davao Oriental while less likely for the rest of the country during the forecast period.

# Exceedance Probability > 100/150/200 mm

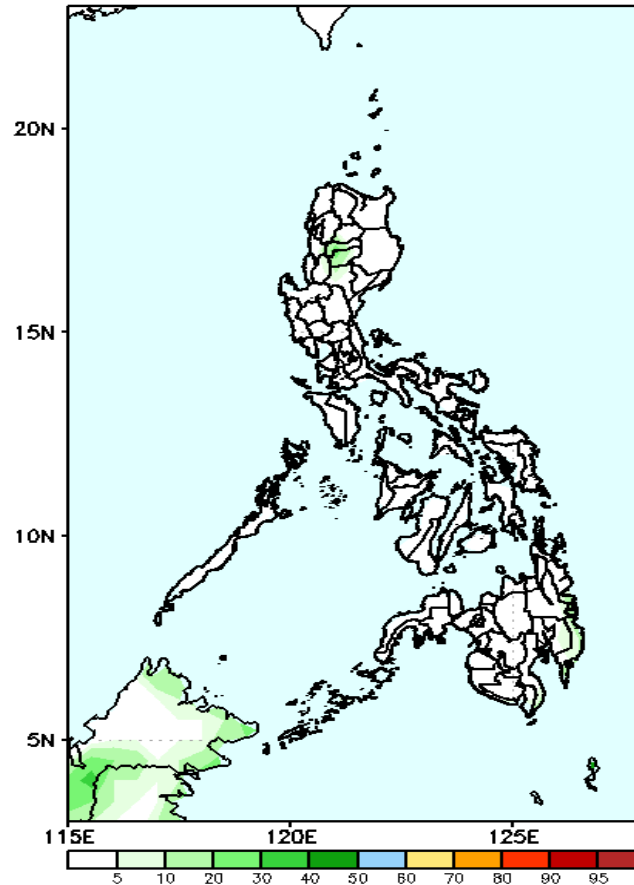
**Week 1: Mar 16-22, 2022**

GEFS Week-1 Exceedance Prob. > 100mm  
Valid: 20220316 – 20220322



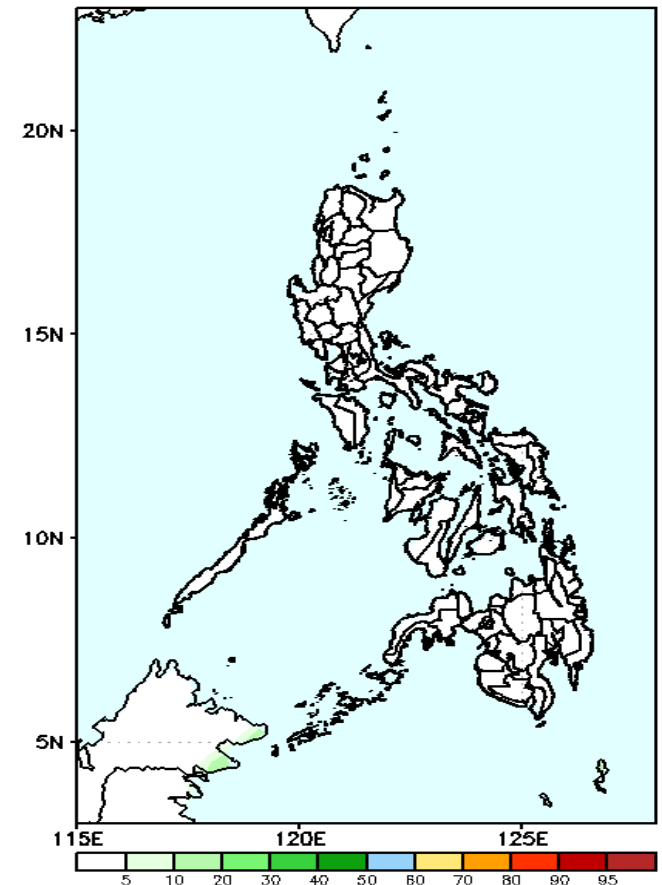
Low probability of rainfall to exceed 100mm in most parts of the country during the forecast period.

GEFS Week-1 Exceedance Prob. > 150mm  
Valid: 20220316 – 20220322



Low probability of rainfall to exceed 150mm in most parts of the country during the forecast period.

GEFS Week-1 Exceedance Prob. > 200mm  
Valid: 20220316 – 20220322



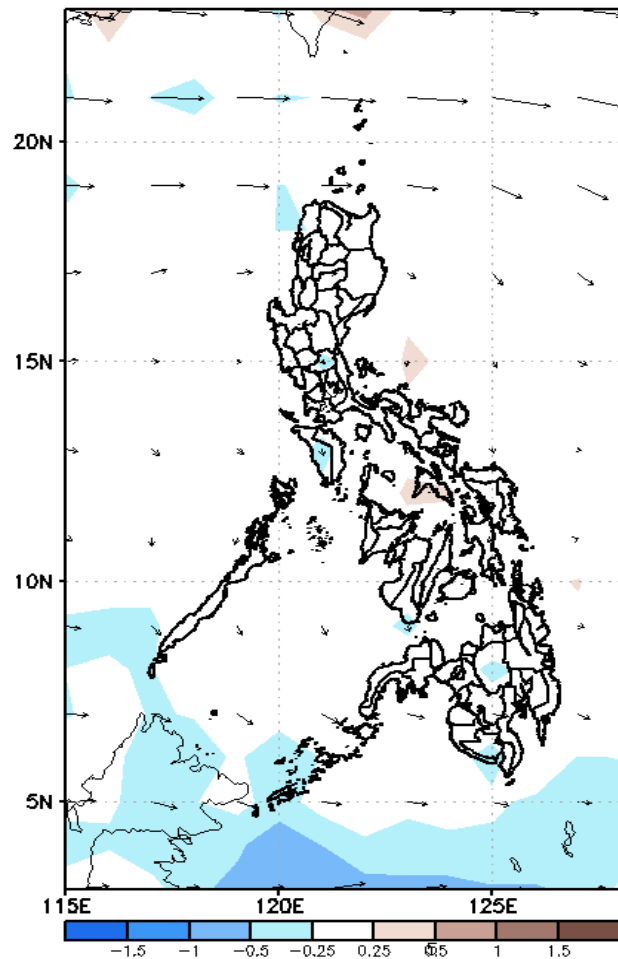
Low probability of rainfall to exceed 200mm in most parts of the country during the forecast period.



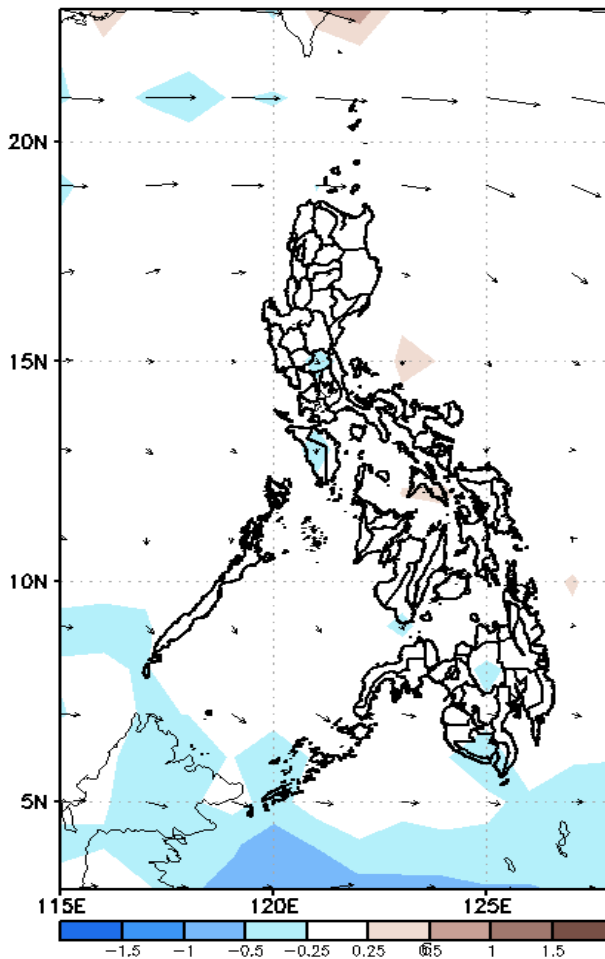
# GEFS Week-2 Forecasts: Divergence & Wind Anomaly

**Week 2: Mar 23-29, 2022**

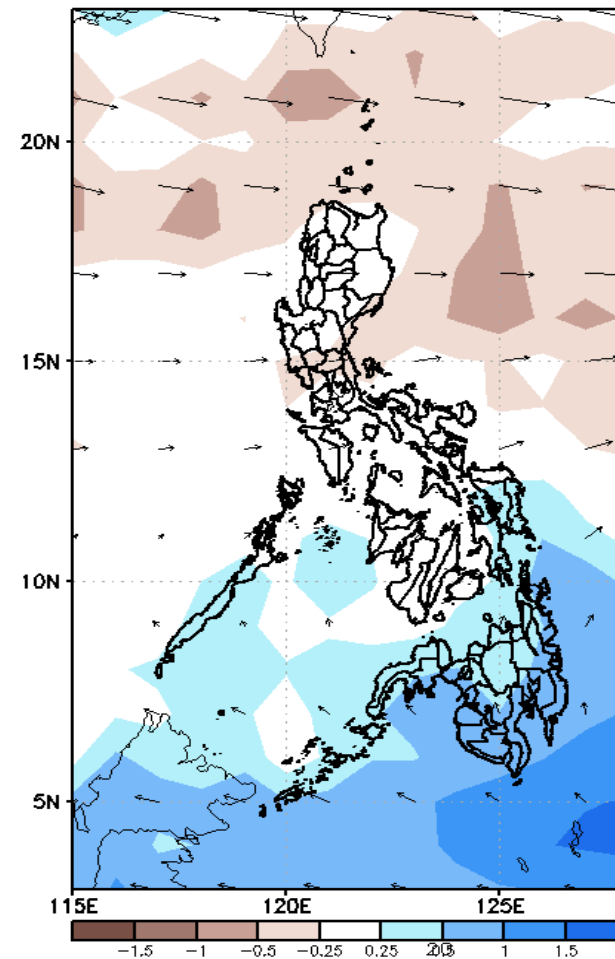
GEFS Week-2 850-hPa Divergence and Wind Anom  
Valid: 20220323 - 20220329



GEFS Week-2 700-hPa Divergence and Wind Anom  
Valid: 20220323 - 20220329



GEFS week-2 200-hPa Divergence and Wind Anom  
Valid: 20220323 - 20220329

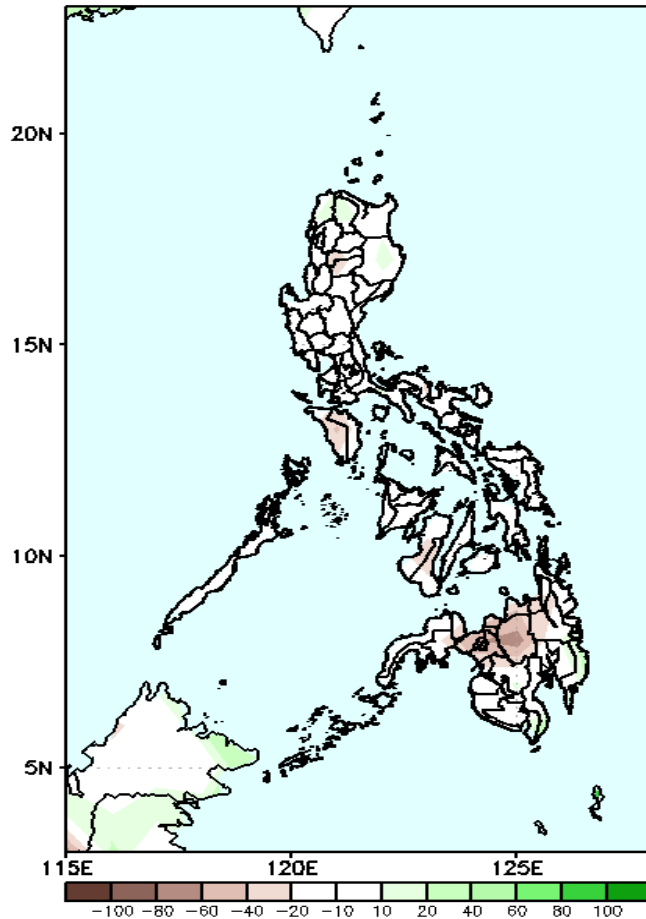


Upper and low level Divergence suggest a likelihood of light to moderate precipitation in Palawan, Eastern Visayas and most parts of Mindanao. Easterlies affecting most parts of the country attributing to warmer temperatures during the forecast period.

# Precipitation Anomaly and Exceedance Probability > 25/50 mm

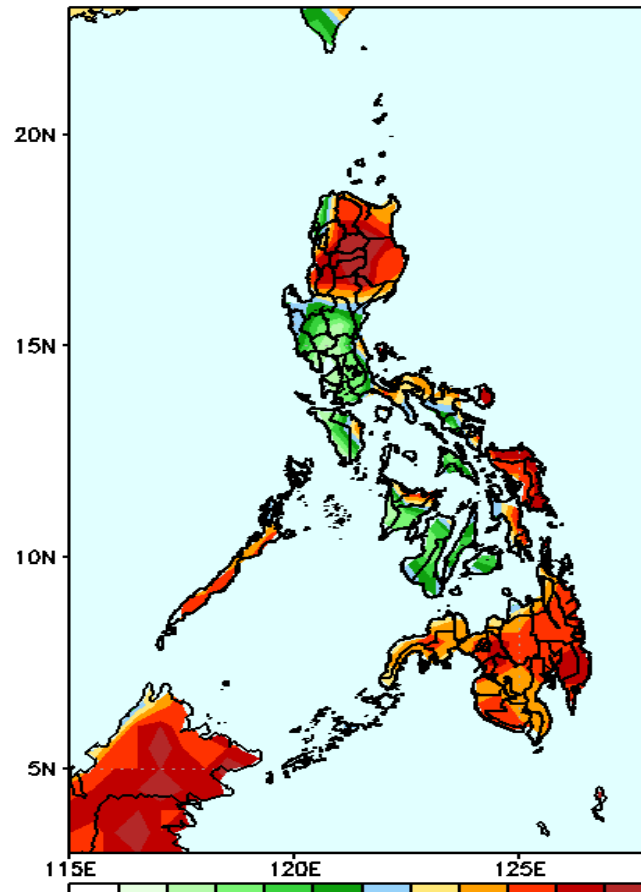
**Week 2: Mar 23-29, 2022**

GEFS Week-2 Precip Anomaly  
Valid: 20220323 - 20220329



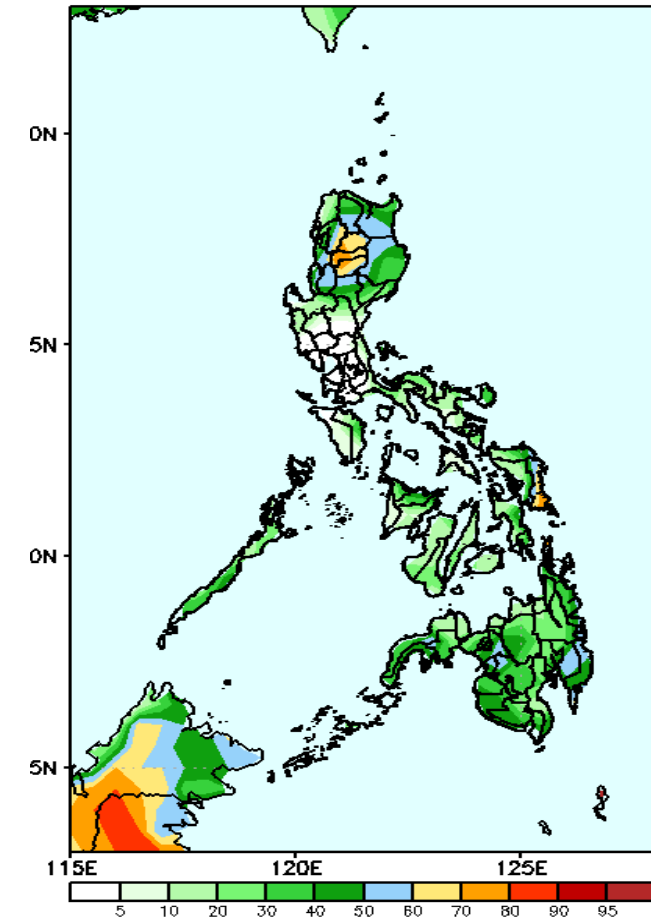
Rainfall deficit of 20-50mm is expected in most parts of Visayas and up to 80mm in Northern Mindanao during the forecast period.

GEFS Week-2 Exceedance Prob. > 25mm  
Valid: 20220323 - 20220329



High probability of rainfall to exceed 25mm in most parts of Ilocos & Cordillera Region, Cagayan Valley, Palawan, parts of Quezon, Camarines Norte & Sur, Catanduanes, Eastern Visayas, Capiz and most parts of Mindanao while less likely for the rest of the country during the forecast period.

GEFS Week-2 Exceedance Prob. > 50mm  
Valid: 20220323 - 20220329



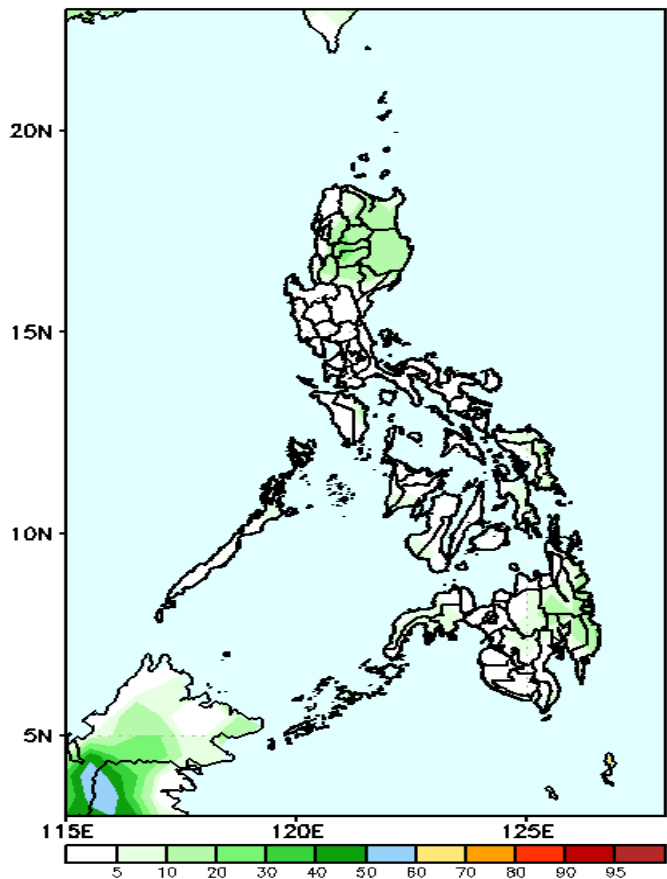
60-80% probability of rainfall to exceed 50mm in Cordillera Region and Eastern Samar while less likely for the rest of the country during the forecast period



# Exceedance Probability > 100/150/200 mm

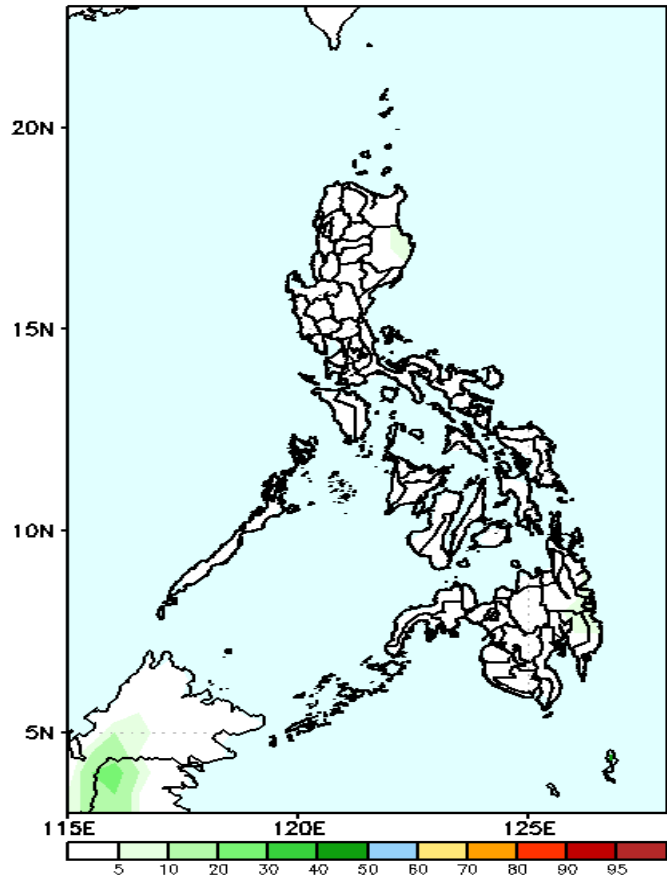
## Week 2: Mar 23-29, 2022

GEFS Week-2 Exceedance Prob. > 100mm  
Valid: 20220323 – 20220329



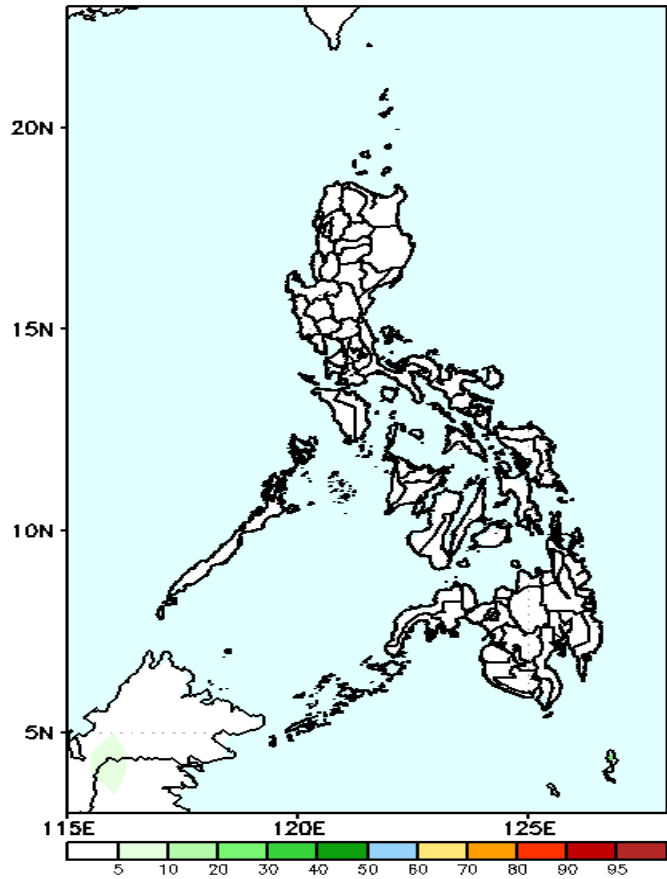
Low probability of rainfall to exceed 100mm in most parts of the country during the forecast period.

GEFS Week-2 Exceedance Prob. > 150mm  
Valid: 20220323 – 20220329



Low probability of rainfall to exceed 150mm in most parts of the country during the forecast period.

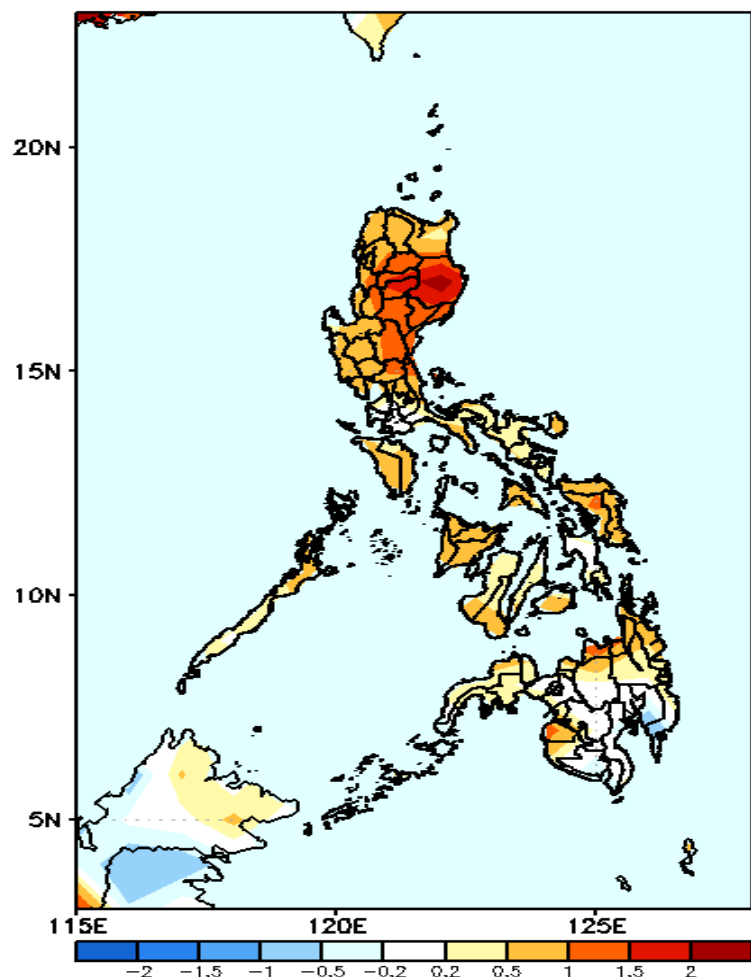
GEFS Week-2 Exceedance Prob. > 200mm  
Valid: 20220323 – 20220329



Low probability of rainfall to exceed 200mm in most parts of the country during the forecast period.

# GEFS Week-1 & 2 Forecasts: T2m Anomaly

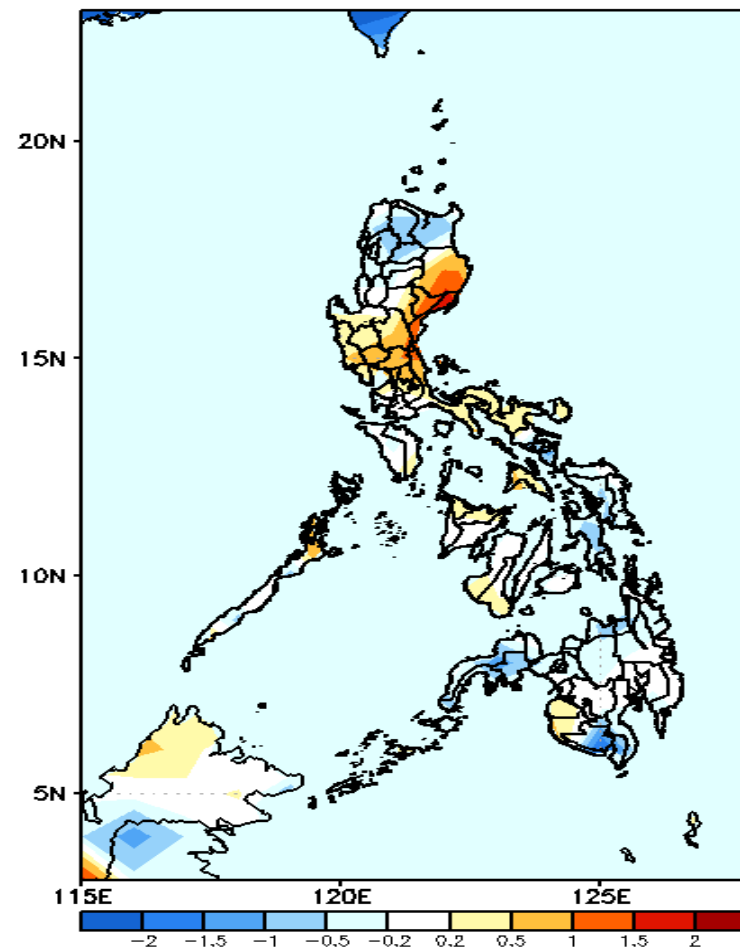
GEFS Week-1 T2m Anomaly  
Valid: 20220316 – 20220322



## 2m Temperature Week 1: Mar 16-22, 2022

Slightly warmer to warmer than average surface air temperature will likely experience in most parts of the country during the forecast period.

GEFS Week-2 T2m Anomaly  
Valid: 20220323 – 20220329



## 2m Temperature Week 2: Mar 23-29, 2022

Average to slightly cooler than average surface air temperature will likely experience in northern Luzon and most parts of Visayas & Mindanao while slightly warmer to warmer temperature is expected for the rest of Luzon during the forecast period.