



USAID
FROM THE AMERICAN PEOPLE



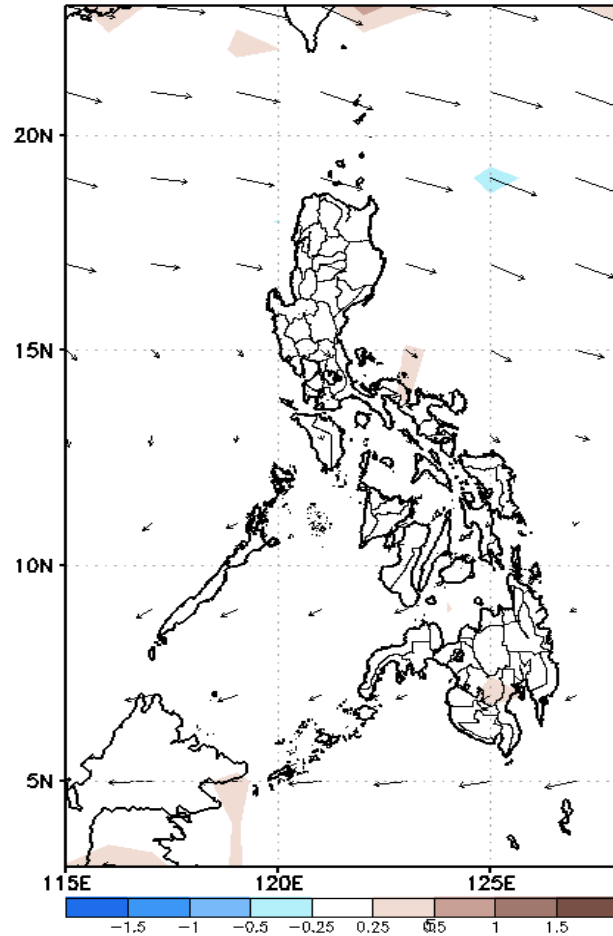
Week 1 & Week 2 Forecast for the Philippines using GEFS Model



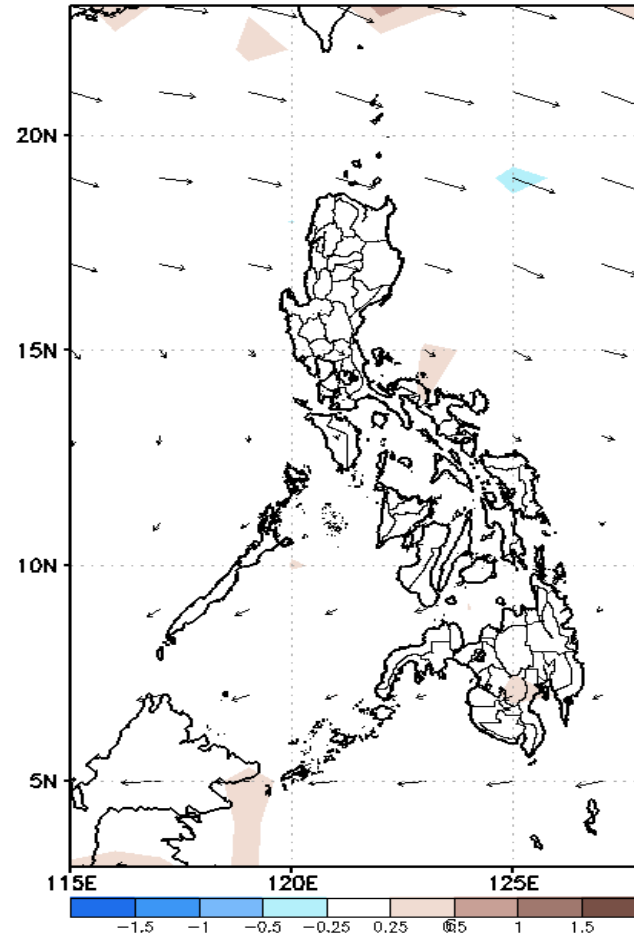
GEFS Week-1 Forecasts: Divergence & Wind Anomaly

Week 1: April 16- April 22, 2020

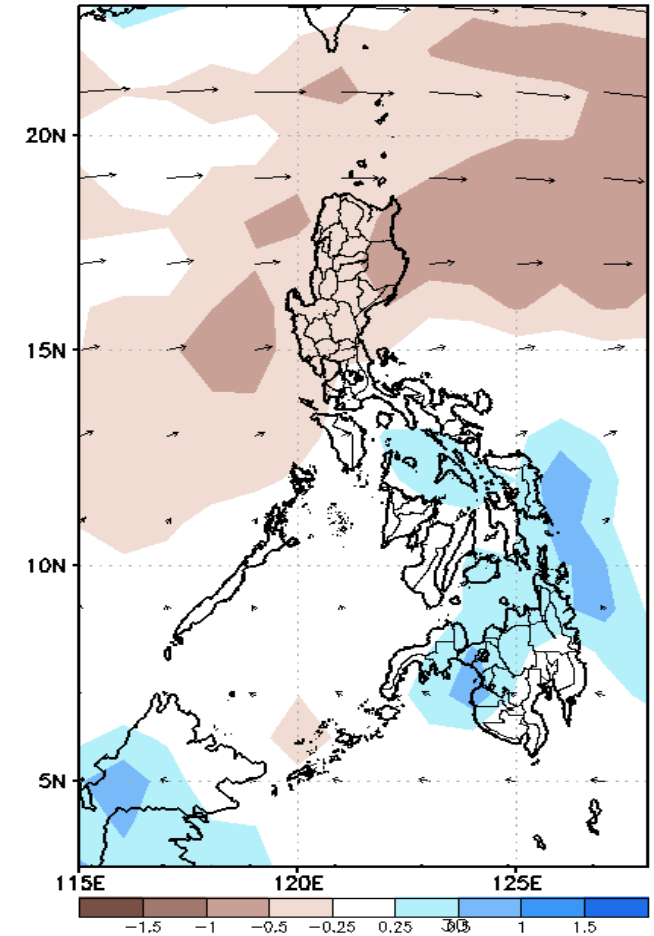
GEFS Week-1 850-hPa Divergence and Wind Anom
Valid: 20200416 - 20200422



GEFS Week-1 700-hPa Divergence and Wind Anom
Valid: 20200416 - 20200422



GEFS Week-1 200-hPa Divergence and Wind Anom
Valid: 20200416 - 20200422

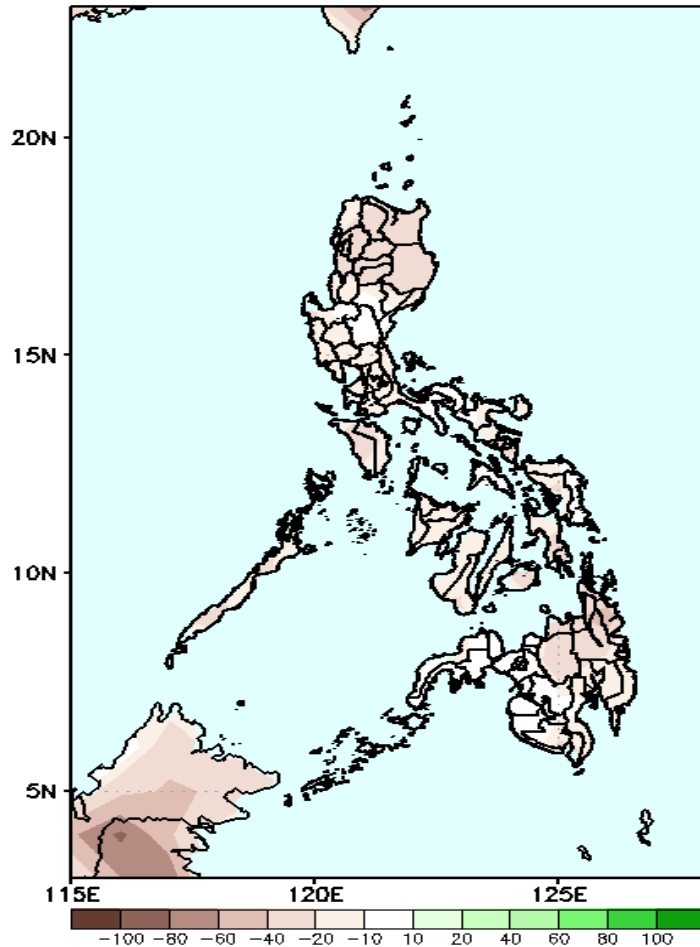


High level (750 hPa) Divergence show less likelihood of precipitation in some parts of Luzon and Mindanao due to localize thunderstorm. Easterlies affecting most parts of the country during the forecast period.

Precipitation Anomaly and Exceedance Probability > 25/50 mm

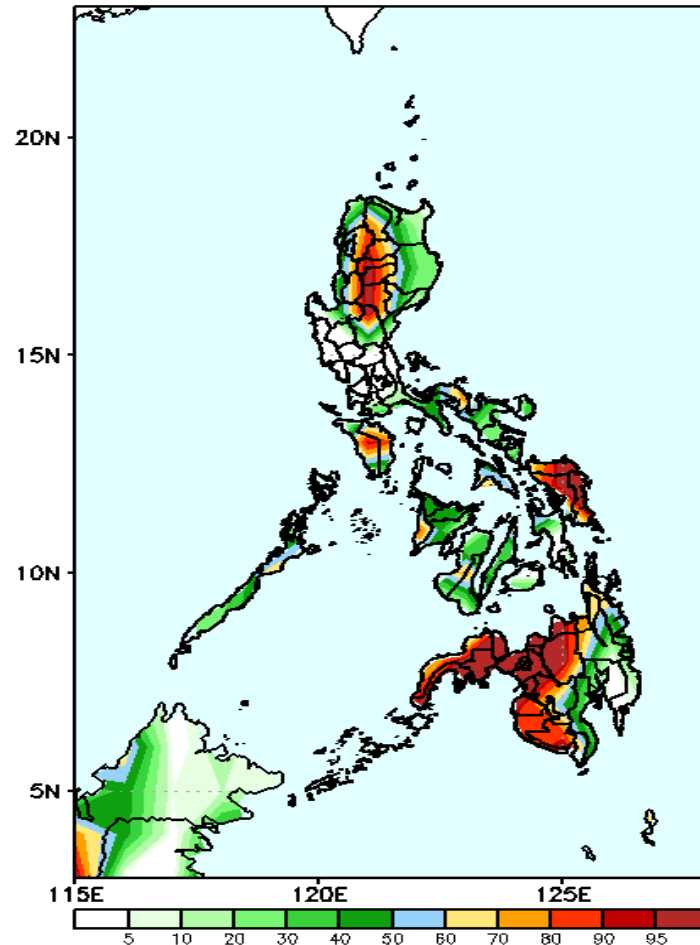
Week 1: April 16- April 22, 2020

GEFS Week-1 Precip Anomaly
Valid: 20200416 - 20200422



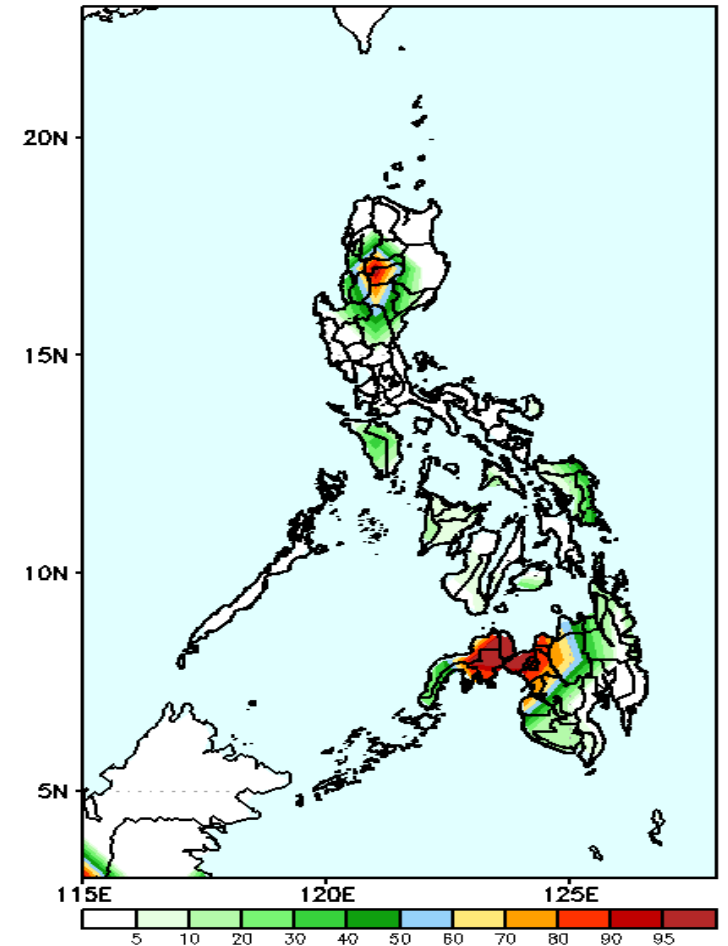
Rainfall deficit of up to 60 mm is likely in most parts of the country during the forecast period.

GEFS Week-1 Exceedance Prob. > 25mm
Valid: 20200416 - 20200422



High probability of rainfall to exceed 25mm in CAR, Mindoro, eastern Visayas and western Mindanao while less likely for the rest of the country during the forecast period.

GEFS Week-1 Exceedance Prob. > 50mm
Valid: 20200416 - 20200422

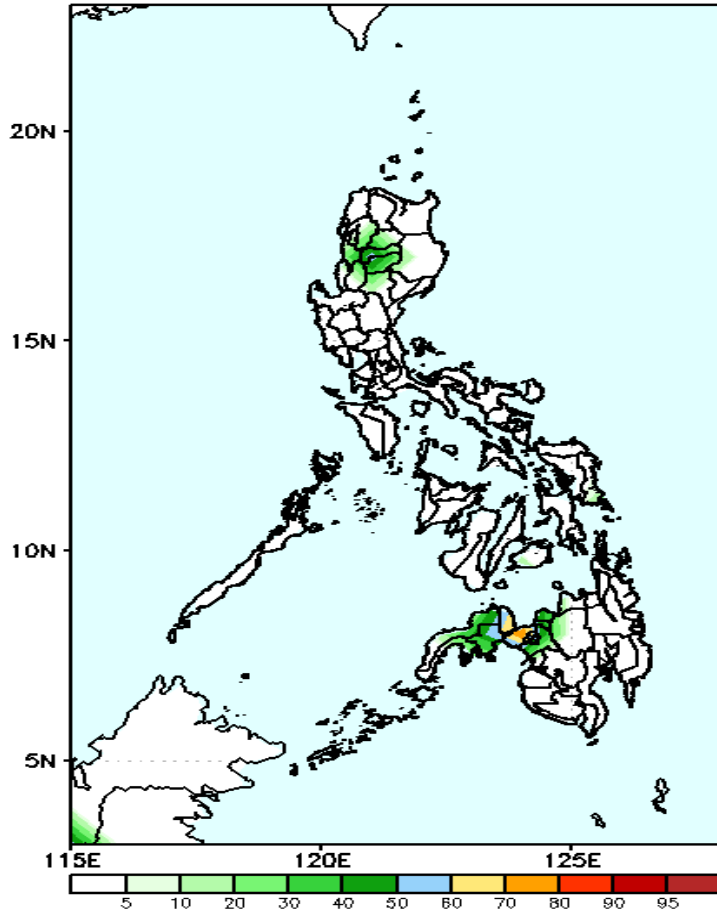


Less probability of rainfall to exceed 100mm in most parts of the country except in some areas in CAR, northern Mindanao and Zamboanga Peninsula where there is high probability during the forecast period.

Exceedance Probability > 100/150/200 mm

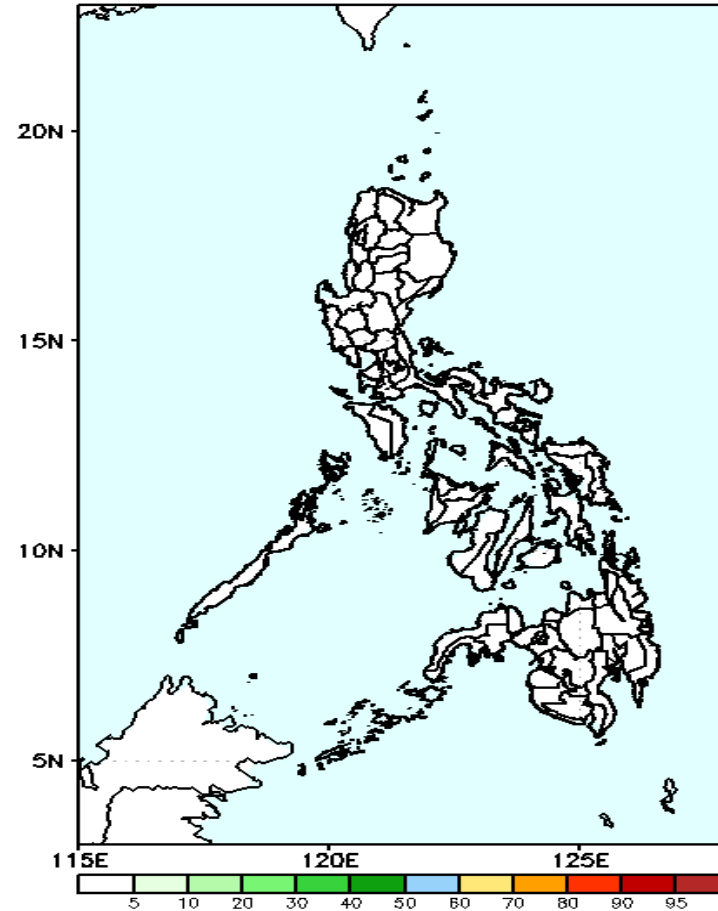
Week 1: April 16- April 22, 2020

GEFS Week-1 Exceedance Prob. > 100mm
Valid: 20200416 - 20200422



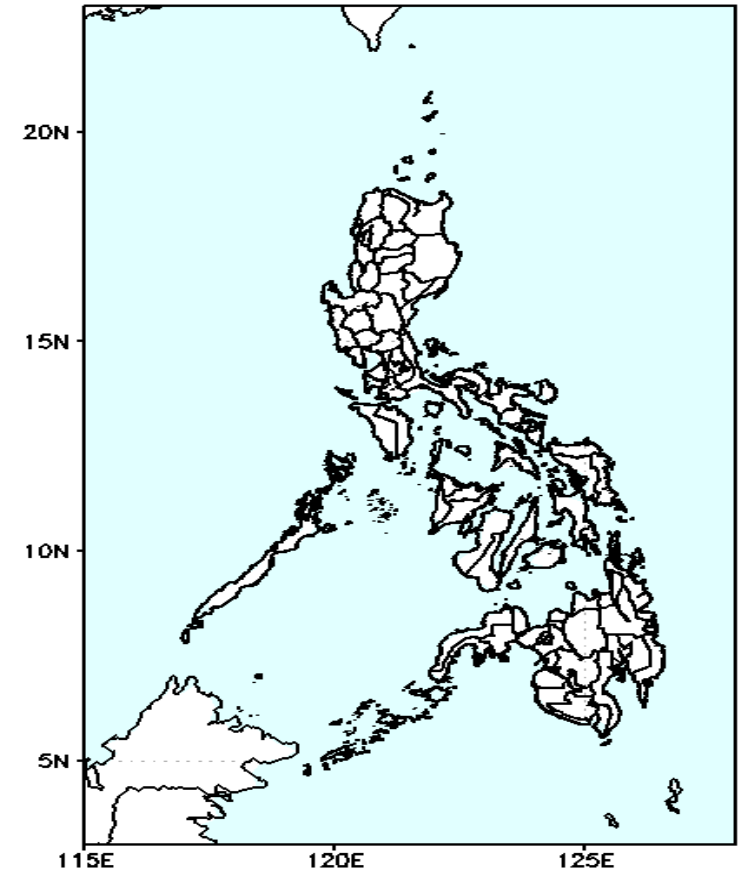
Less probability of rainfall to exceed 100mm in most parts of the country except in CAR and Zamboanga Peninsula where there is 50-75% chance during the forecast period.

GEFS Week-1 Exceedance Prob. > 150mm
Valid: 20200416 - 20200422



Less probability of rainfall to exceed 150 mm in most parts of the country during the forecast period.

GEFS Week-1 Exceedance Prob. > 200mm
Valid: 20200416 - 20200422

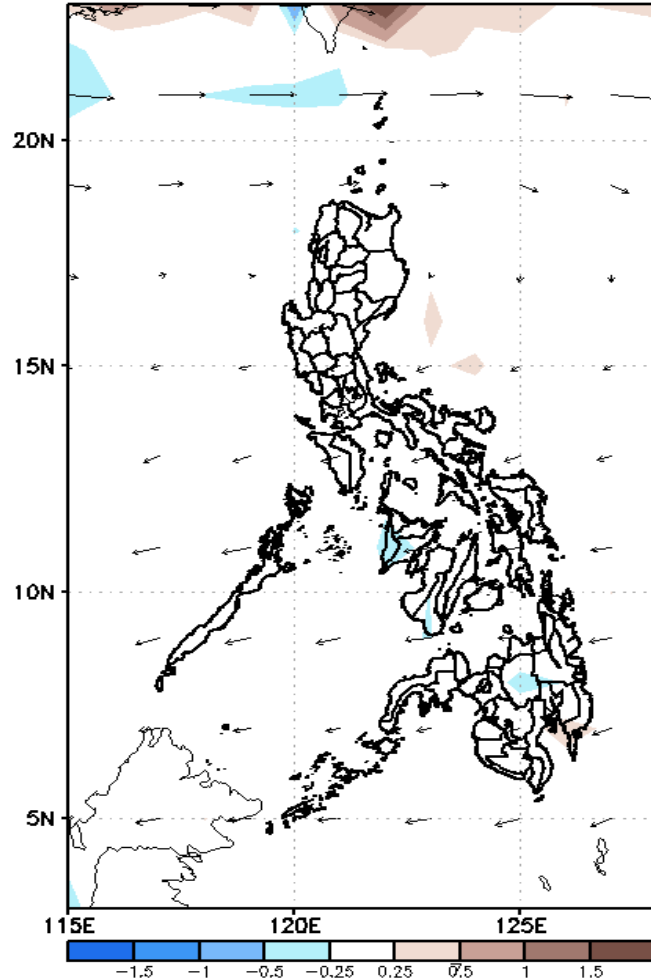


Less probability of rainfall to exceed 200 mm in most parts of the country during the forecast period.

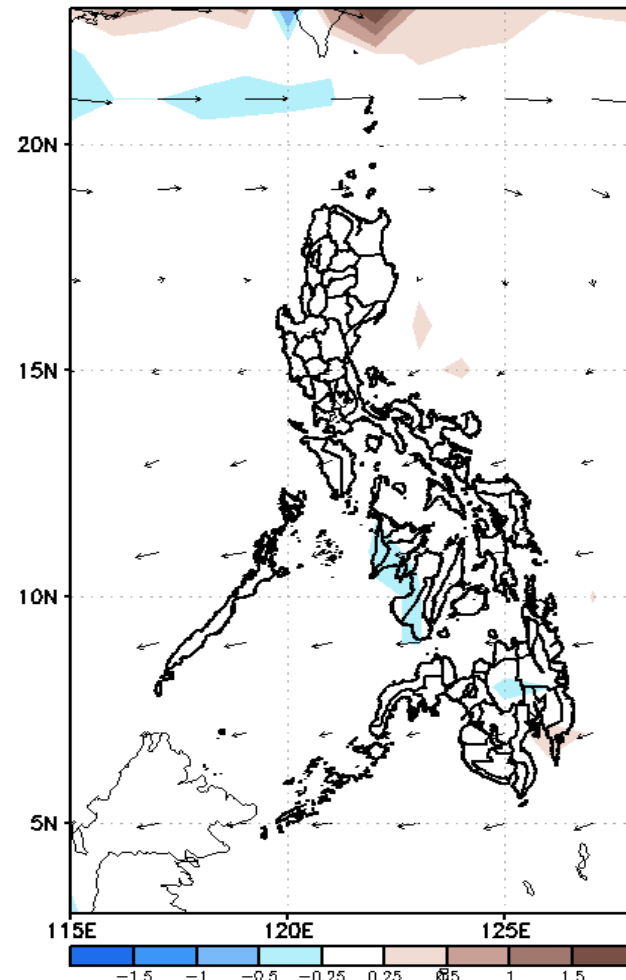
GEFS Week-2 Forecasts: Divergence & Wind Anomaly

Week 2: April 23- April 29, 2020

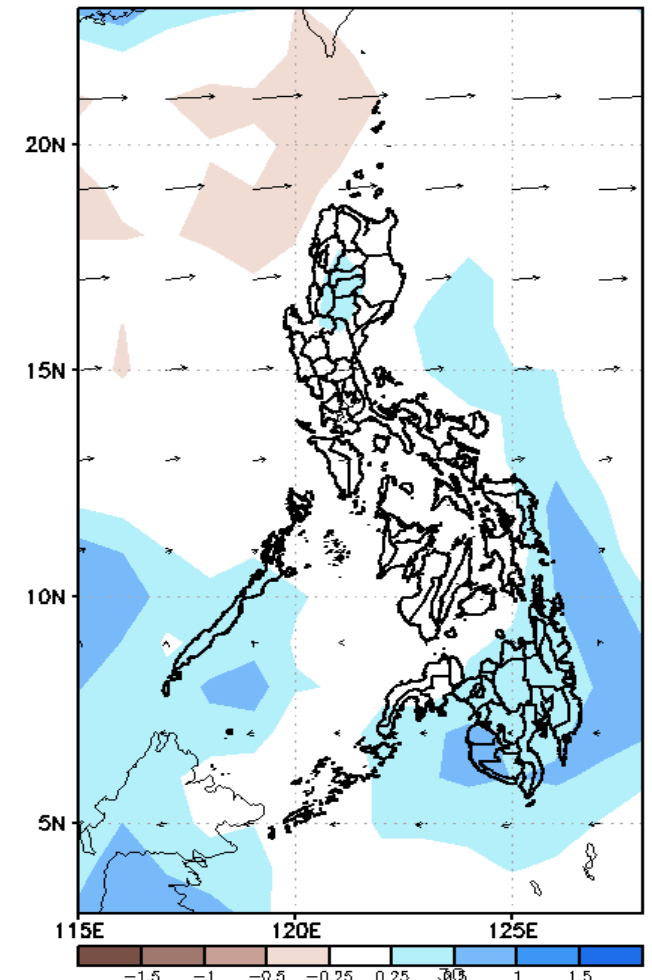
GEFS Week-2 850-hPa Divergence and Wind Anom
Valid: 20200423 - 20200429



GEFS Week-2 700-hPa Divergence and Wind Anom
Valid: 20200423 - 20200429



GEFS week-2 200-hPa Divergence and Wind Anom
Valid: 20200423 - 20200429

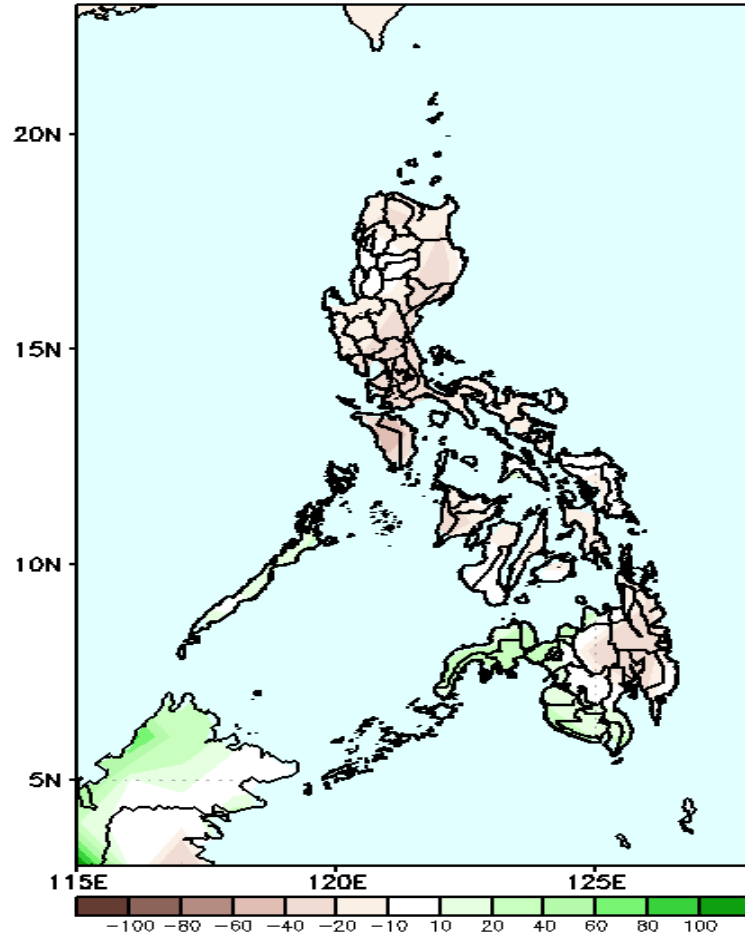


High level (750 hPa) Divergence show likelihood of precipitation in some parts of Luzon, eastern Visayas and Mindanao due to localize thunderstorm. Easterlies affecting most parts of the country during the forecast period.

Precipitation Anomaly and Exceedance Probability > 25/50 mm

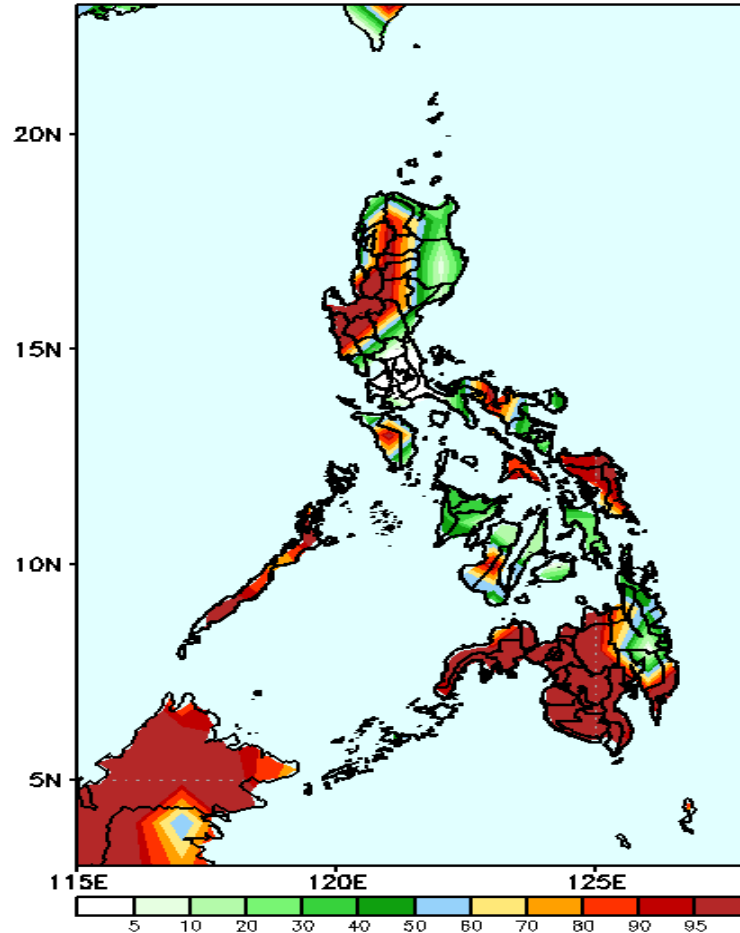
Week 2: April 23- April 29, 2020

GEFS Week-2 Precip Anomaly
Valid: 20200423 - 20200429



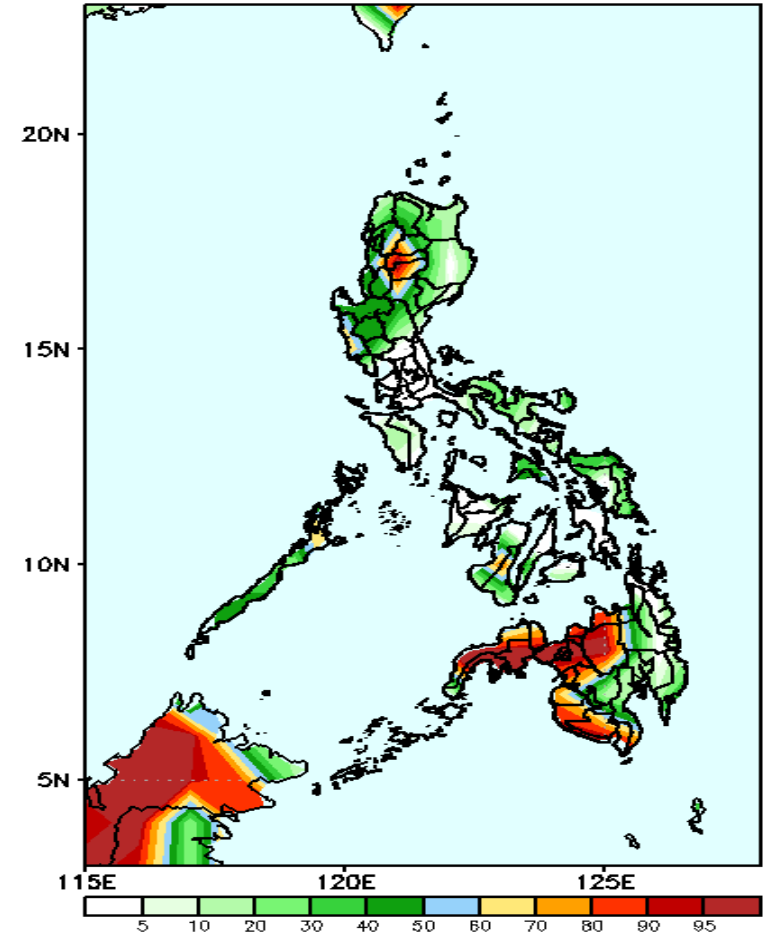
Rainfall deficit of 20-50mm is likely in most parts of the country during the forecast period.

GEFS Week-2 Exceedance Prob. > 25mm
Valid: 20200423 - 20200429



High probability of rainfall to exceed 25mm in western Luzon, Mindoro, Camarines Norte & Sur, eastern Visayas and western Mindanao is expected while 40-70% probability for the rest of the country during the forecast period.

GEFS Week-2 Exceedance Prob. > 50mm
Valid: 20200423 - 20200429

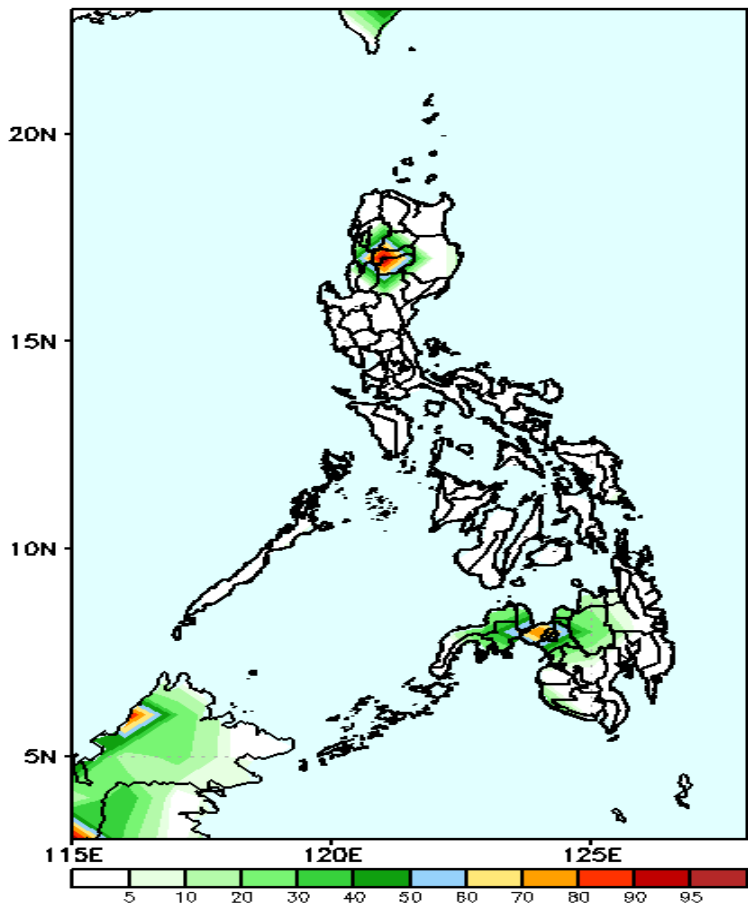


Less probability of rainfall to exceed 50mm in most parts of the country except in CAR and western Mindanao where there is high probability during the forecast period.

Exceedance Probability > 100/150/200 mm

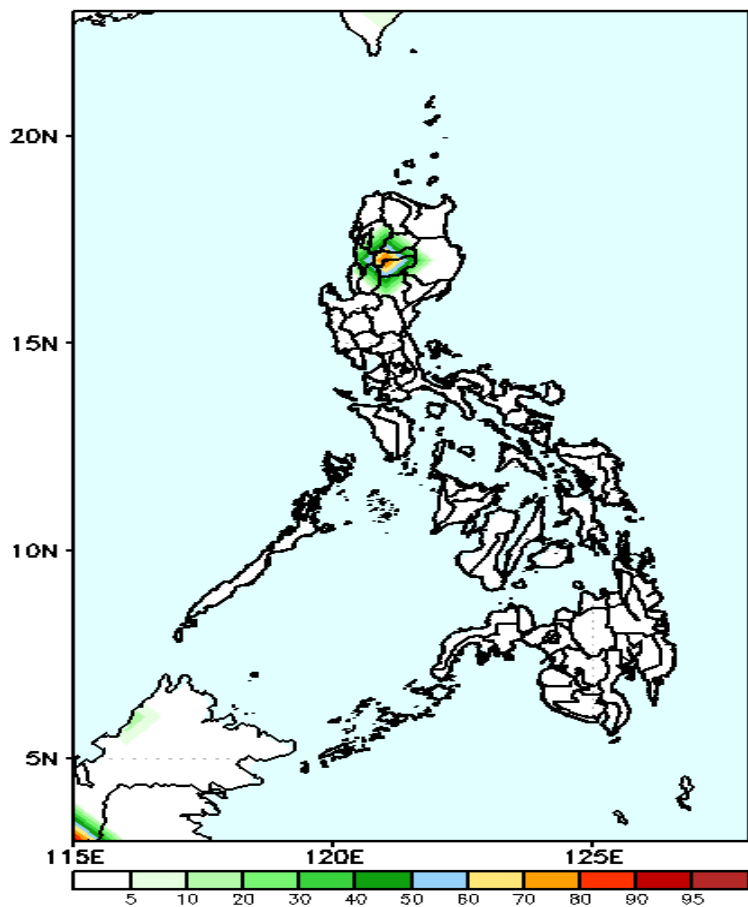
Week 2: April 23- April 29, 2020

GEFS Week-2 Exceedance Prob. > 100mm
Valid: 20200423 - 20200429



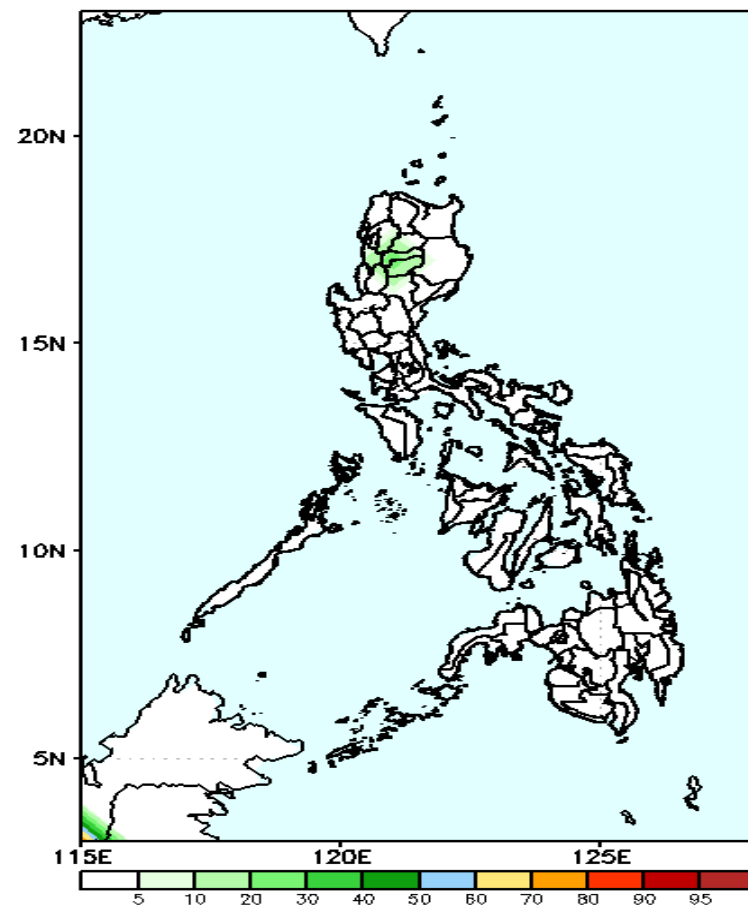
Less probability of rainfall to exceed 100mm in most parts of the country except in CAR, northern Mindanao and Zamboanga Peninsula where there is 50-85% chance during the forecast period.

GEFS Week-2 Exceedance Prob. > 150mm
Valid: 20200423 - 20200429



Less probability of rainfall to exceed 100mm in most parts of the country except in CAR where there is 50-85% chance during the forecast period.

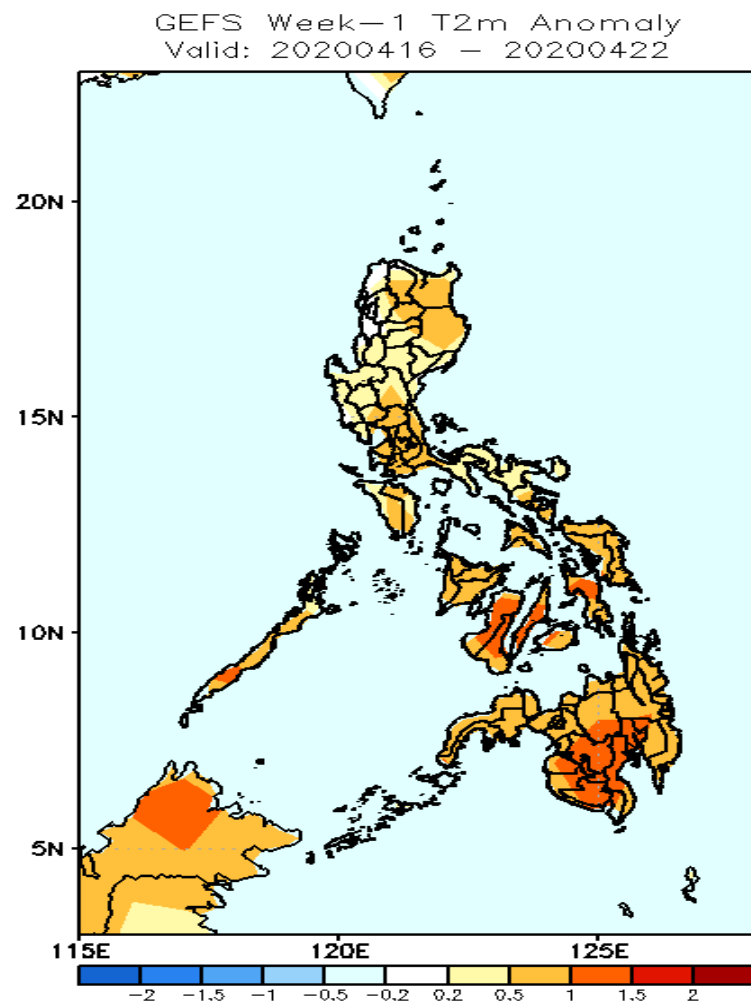
GEFS Week-2 Exceedance Prob. > 200mm
Valid: 20200423 - 20200429



Less probability of rainfall to exceed 200 mm in most parts of the country during the forecast period.

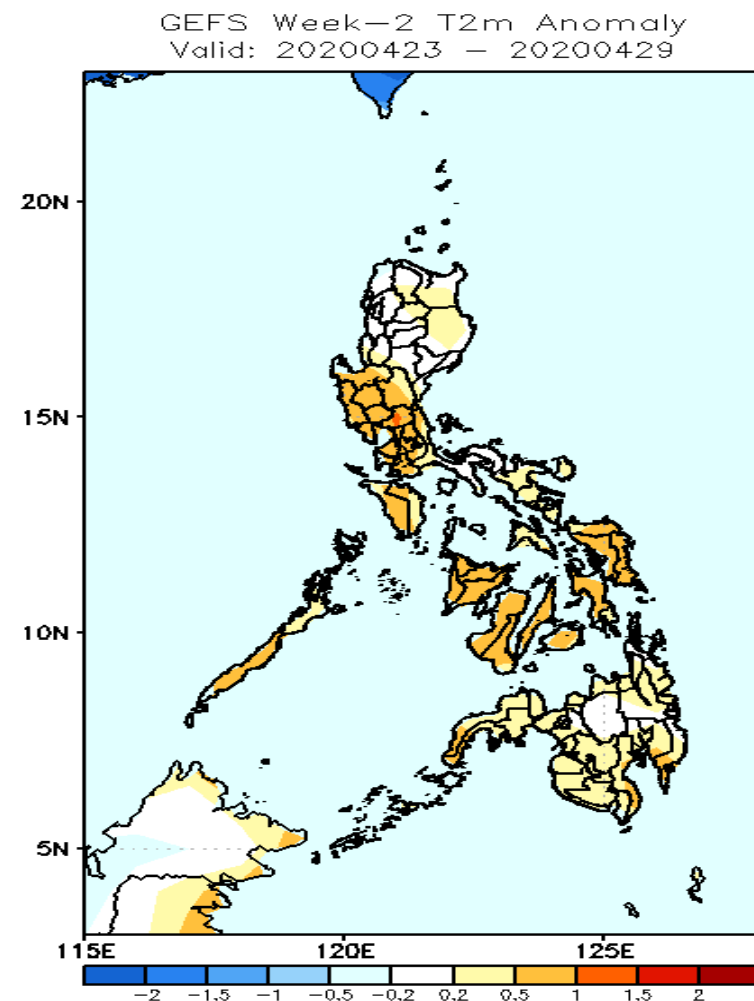


GEFS Week-1 & 2 Forecasts: T2m Anomaly



2m Temperature Week 1: April 16- April 22, 2020

Average to slightly warmer surface air temperature will likely experience in Luzon while slightly warmer to warmer than average surface air temperature is expected in Visayas and Mindanao during the forecast period.



2m Temperature Week 2 April 23- April 29, 2020

Average surface air temperature will likely experience in northern and central Luzon and Mindanao while slightly warmer to warmer than average surface air temperature is expected in southern Luzon and Visayas during the forecast period.