



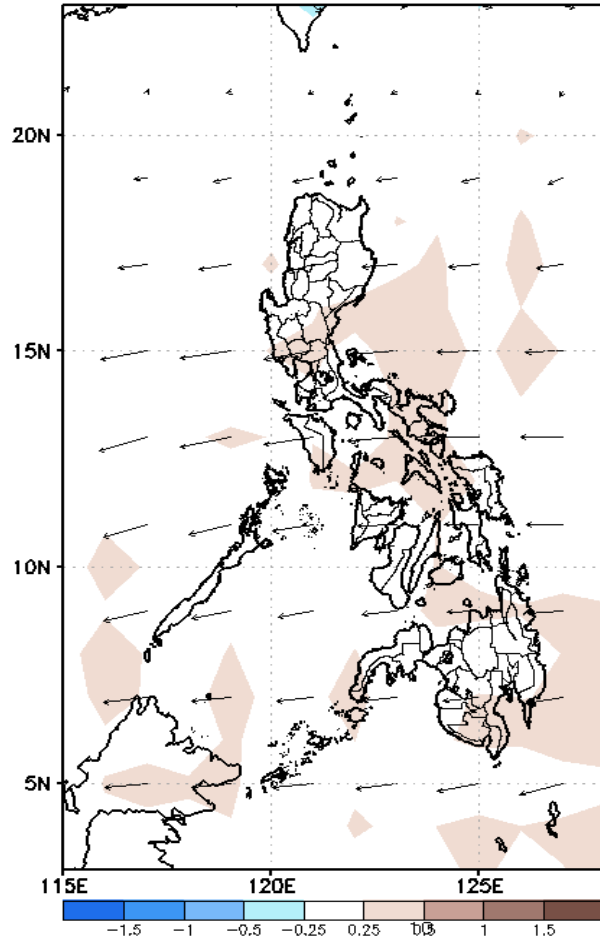
Week 1 & Week 2 Forecast for the Philippines using GEFS Model



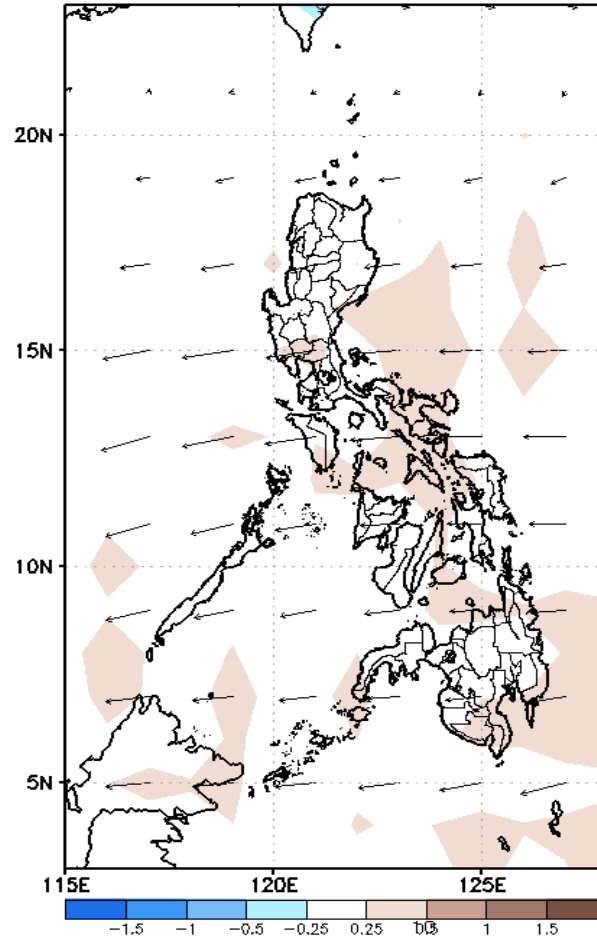
GEFS Week-1 Forecasts: Divergence & Wind Anomaly

Week 1: July 16-22, 2020

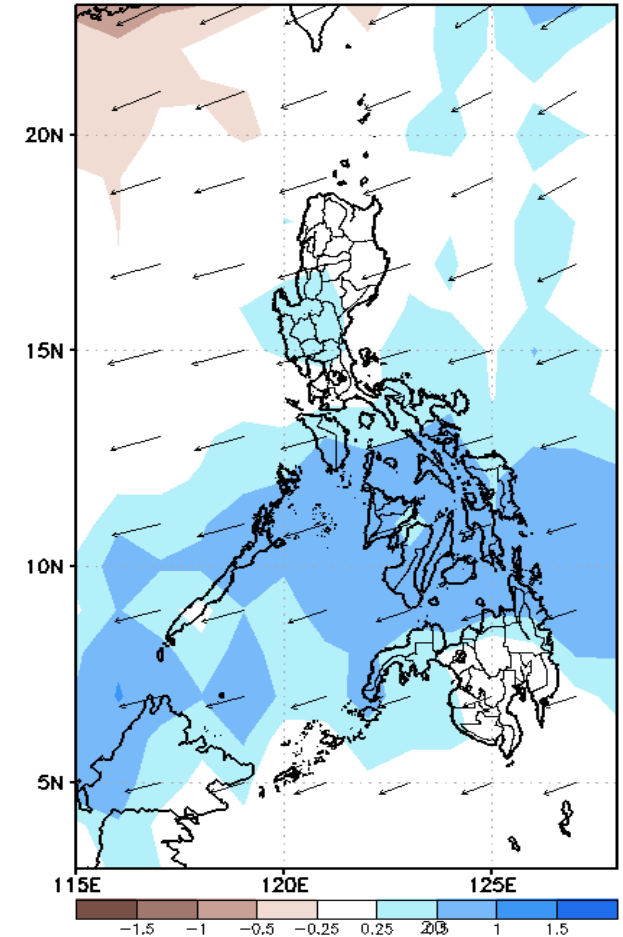
GEFS Week-1 850-hPa Divergence and Wind Anomaly
Valid: 20200716 – 20200722



GEFS Week-1 700-hPa Divergence and Wind Anomaly
Valid: 20200716 – 20200722



GEFS Week-1 200-hPa Divergence and Wind Anomaly
Valid: 20200716 – 20200722

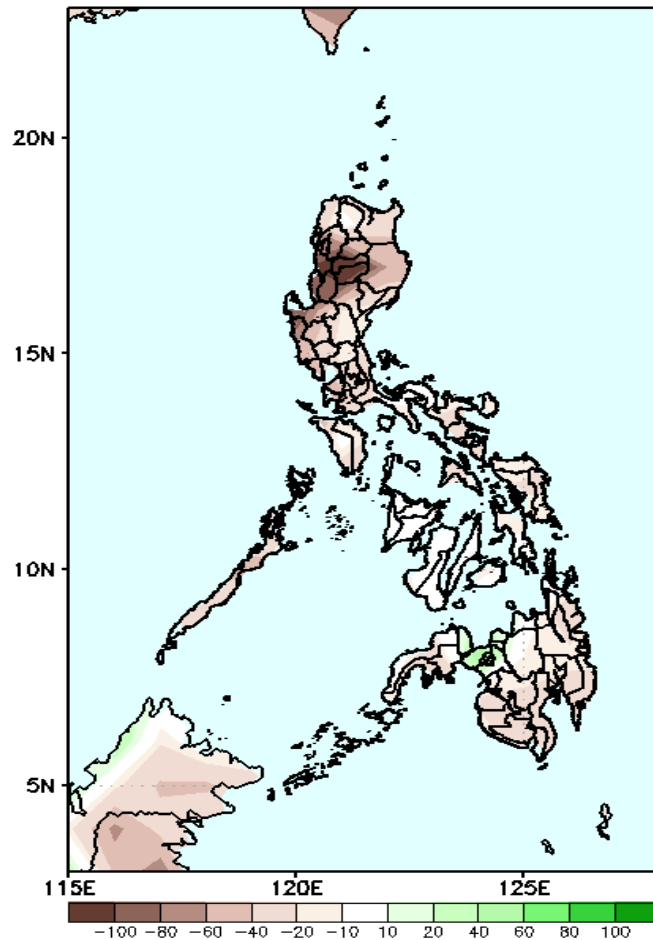


Upper level (200 hPa) Divergence suggest likelihood of precipitation in most parts of the country except in the northern part. Easterlies affecting most parts of the country during the forecast period.

Precipitation Anomaly and Exceedance Probability > 25/50 mm

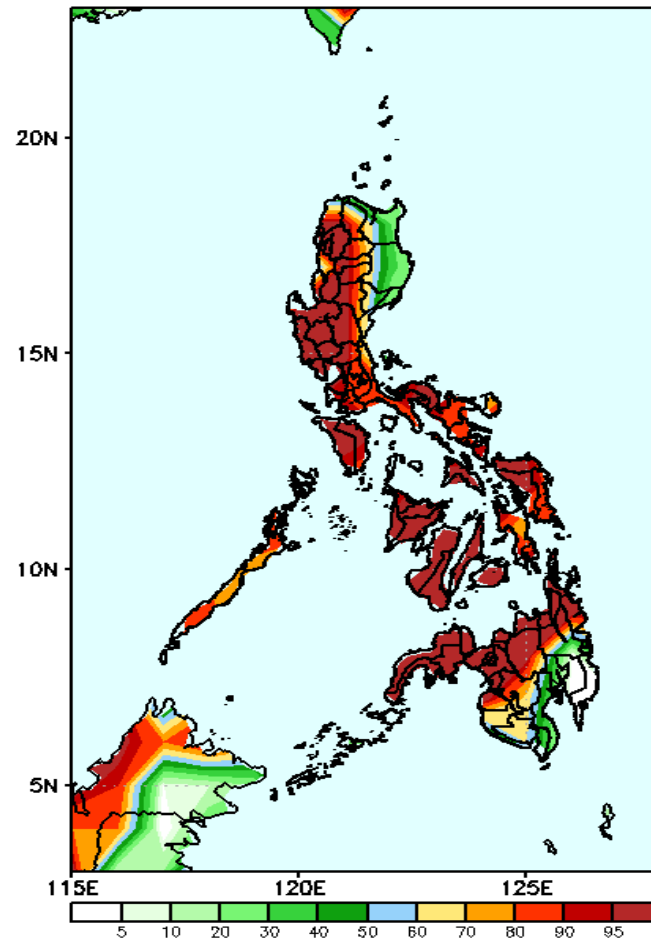
Week 1: July 16-22, 2020

GEFS Week-1 Precip Anomaly
Valid: 20200716 - 20200722



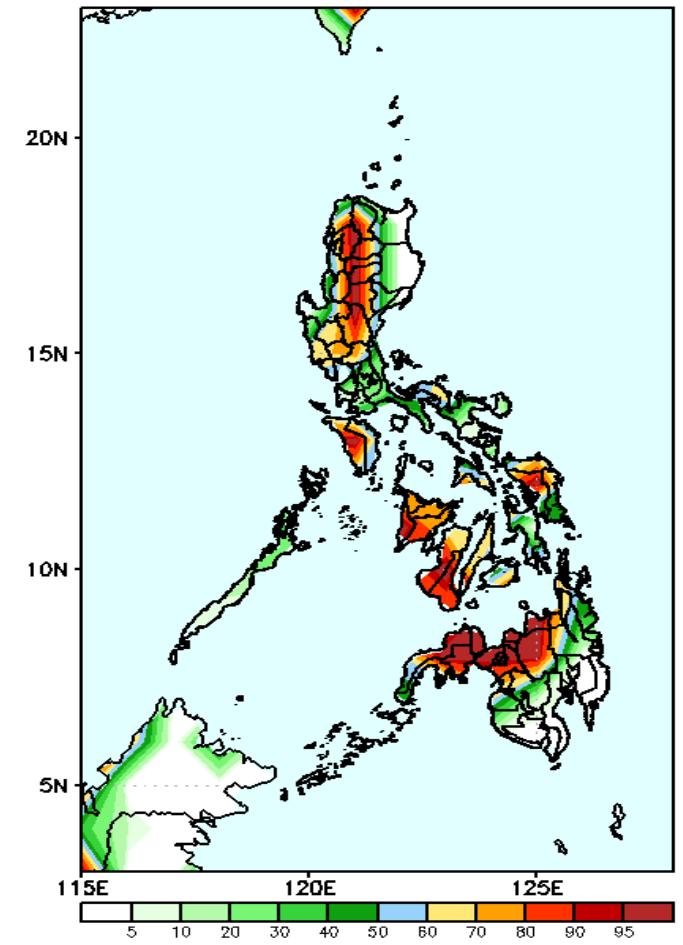
Rainfall deficit of 30-100 mm in Luzon while increase of rainfall of up to 40mm in Lanao del Norte during the forecast period.

GEFS Week-1 Exceedance Prob. > 25mm
Valid: 20200716 - 20200722



High probability of rainfall to exceed 25mm in most parts the country except in eastern Luzon and Davao Region during the forecast period.

GEFS Week-1 Exceedance Prob. > 50mm
Valid: 20200716 - 20200722

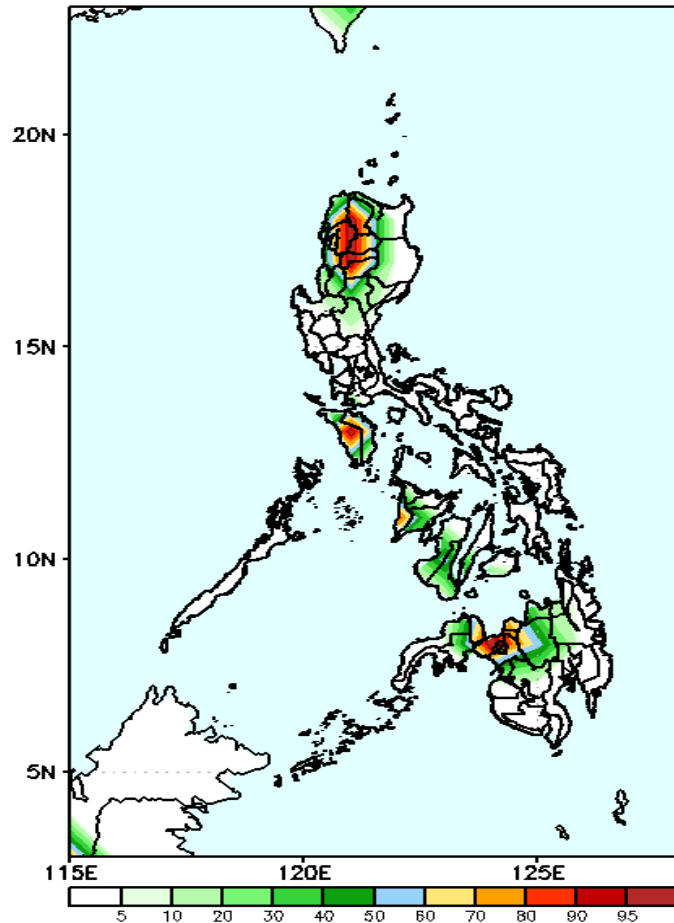


High probability of rainfall to exceed 50mm in western Luzon, Samar provinces, western Visayas and northern parts of Mindanao including Zamboanga Peninsula while less likely for the rest of the country during the forecast period.

Exceedance Probability > 100/150/200 mm

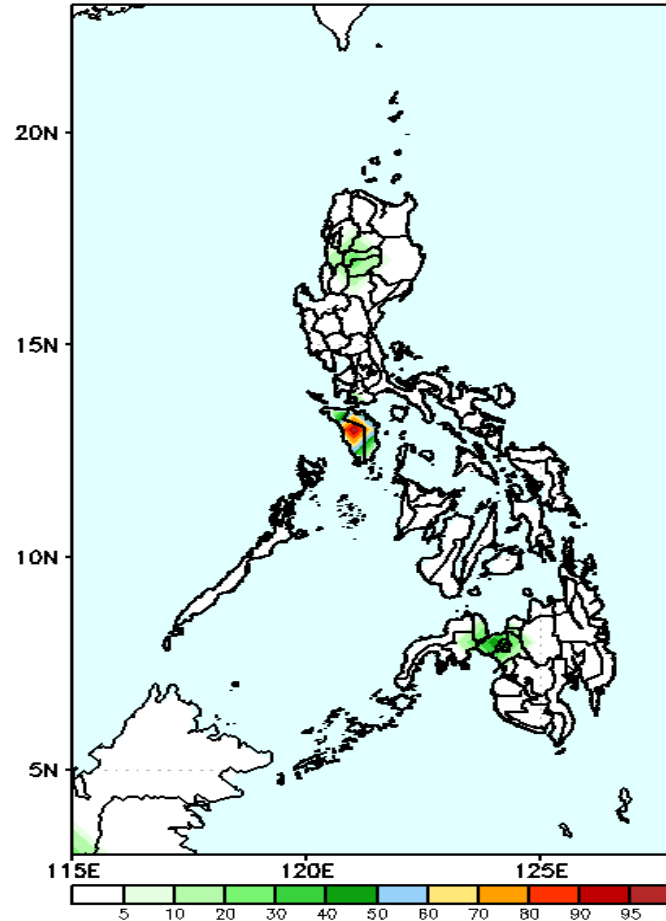
Week 1: July 16-22, 2020

GEFS Week-1 Exceedance Prob. > 100mm
Valid: 20200716 - 20200722



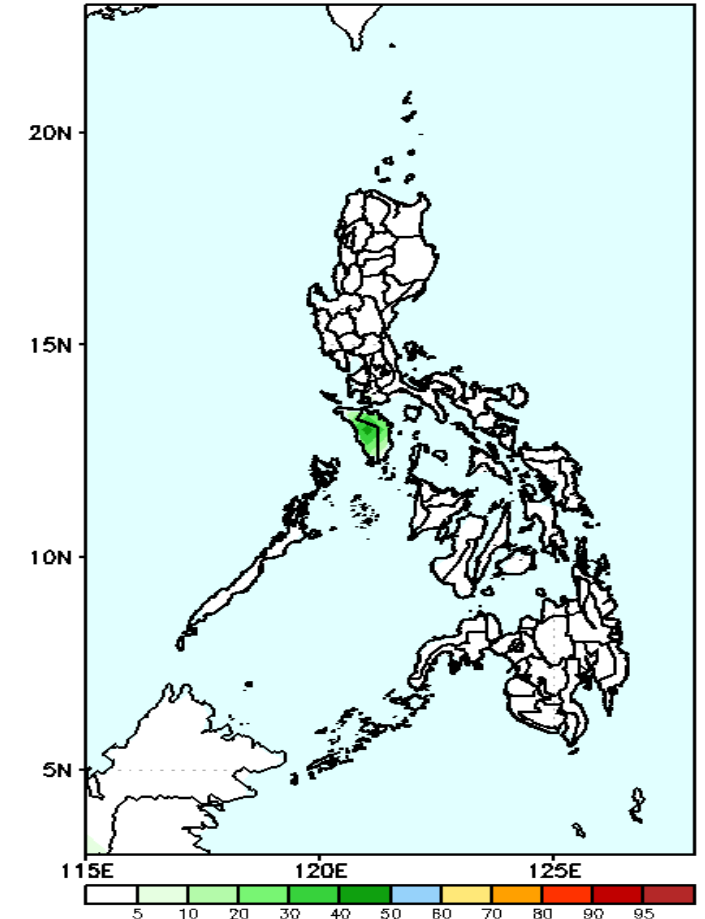
High probability of rainfall to exceed 100mm in Cordillera Region, Mindoro and in northern Mindanao while less likely for the rest of the country during the forecast period.

GEFS Week-1 Exceedance Prob. > 150mm
Valid: 20200716 - 20200722

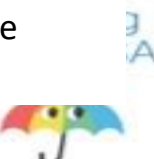


40-90% probability of rainfall to exceed 150mm in Mindoro and Lanao del Norte while less likely for the rest of the country during the forecast period.

GEFS Week-1 Exceedance Prob. > 200mm
Valid: 20200716 - 20200722



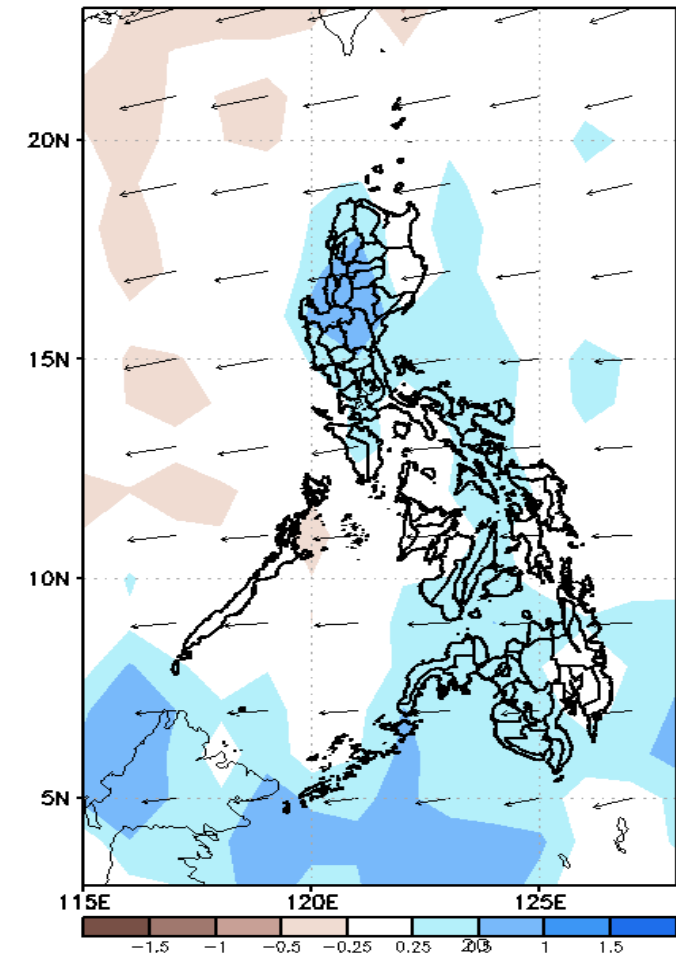
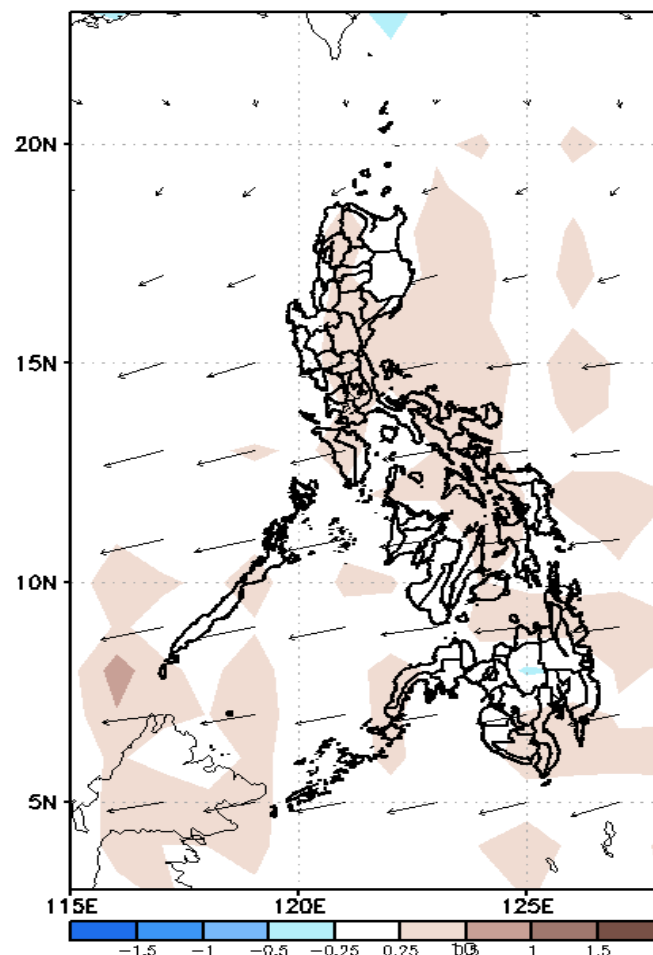
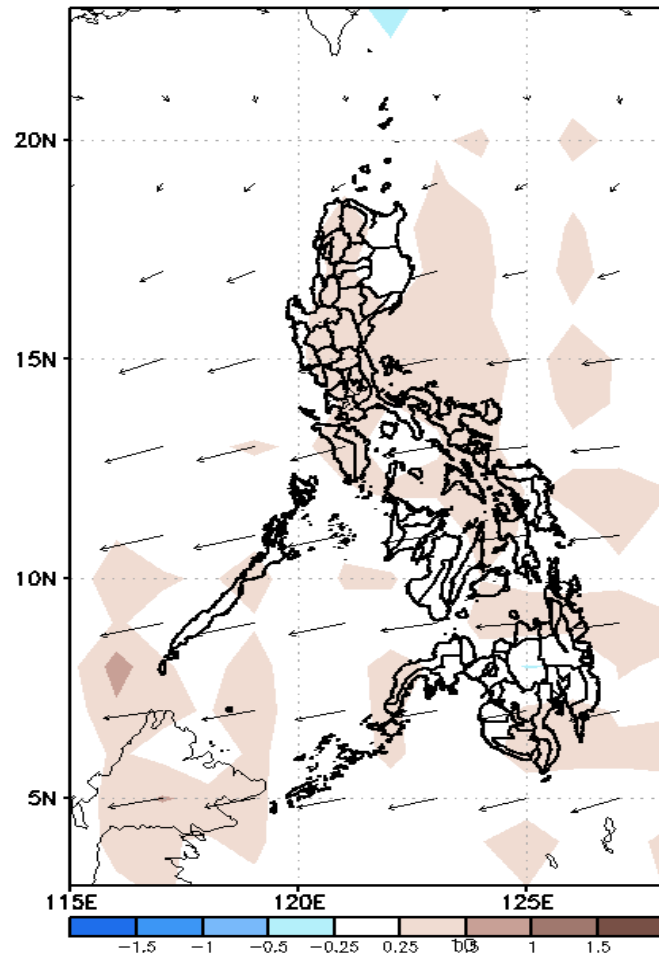
Less probability of rainfall to exceed 200mm in most parts of the country during the forecast period.



GEFS Week-2 Forecasts: Divergence & Wind Anomaly

Week 2: Jul 23-29, 2020

GEFS Week-2 850-hPa Divergence and Wind Anom; GEFS Week-2 700-hPa Divergence and Wind Anom; week-2 200-hPa Divergence and Wind Anom
Valid: 20200723 - 20200729

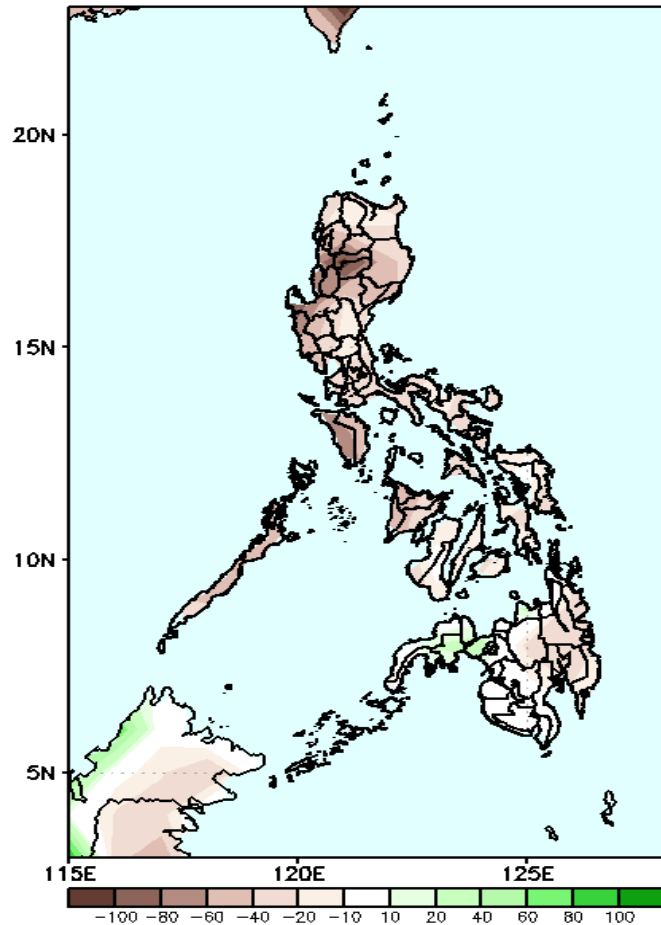


Upper level (200 hPa) Divergence suggest likelihood of precipitation in most parts of the country except Cagayan Valley, Palawan and Davao Region. Easterlies affecting most parts of the country during the forecast period.

Precipitation Anomaly and Exceedance Probability > 25/50 mm

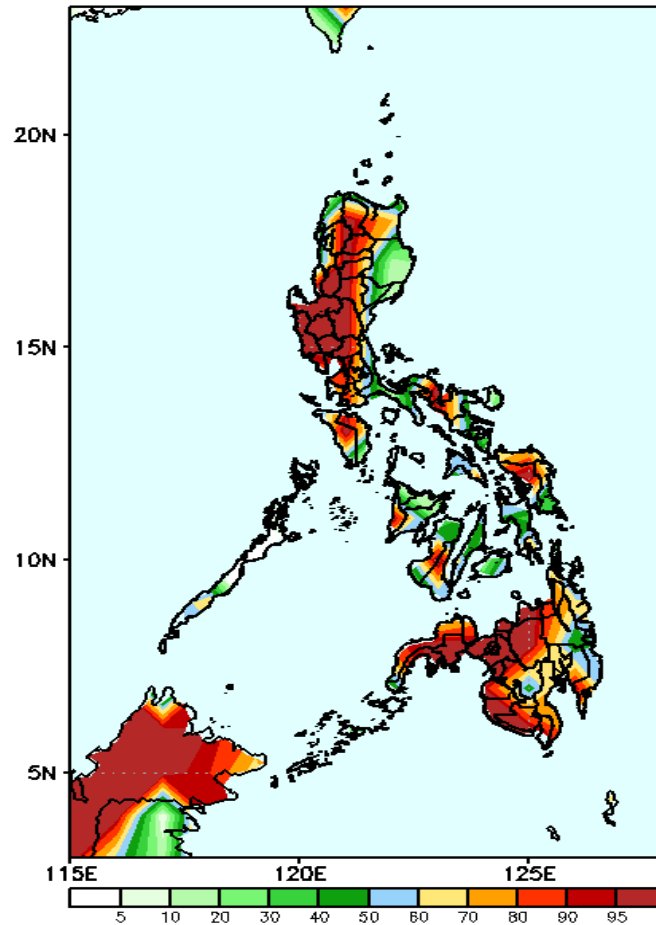
Week 2: Jul 23-29, 2020

GEFS Week-2 Precip Anomaly
Valid: 20200723 - 20200729



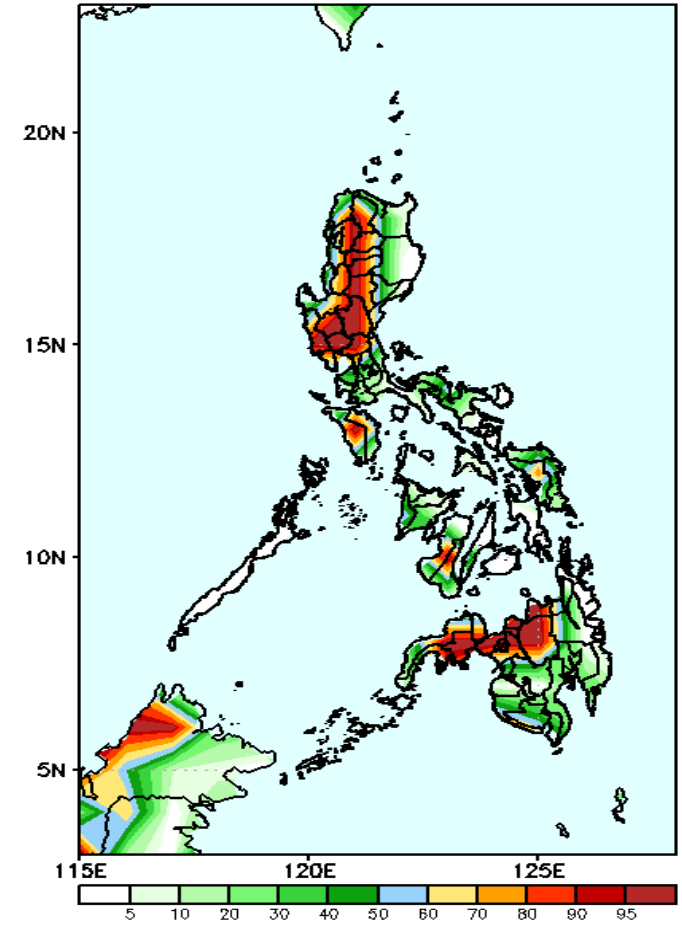
Rainfall deficit of 20-80mm is expected in most parts of the country during the forecast period.

GEFS Week-2 Exceedance Prob. > 25mm
Valid: 20200723 - 20200729



High probability of rainfall to exceed 25mm in most parts of the country is expected except in Isabela and central parts of Visayas during the forecast period.

GEFS Week-2 Exceedance Prob. > 50mm
Valid: 20200723 - 20200729

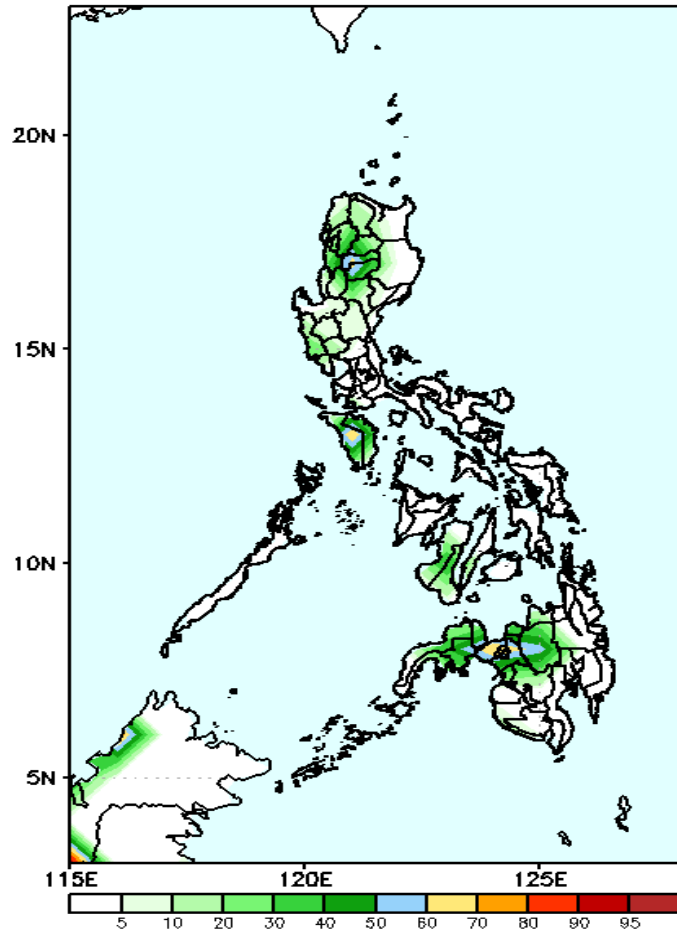


High probability of rainfall to exceed 50mm in western and central Luzon, Mindoro and in northern Mindanao and Zamboanga provinces while less likely for the rest of the country during the forecast period.

Exceedance Probability > 100/150/200 mm

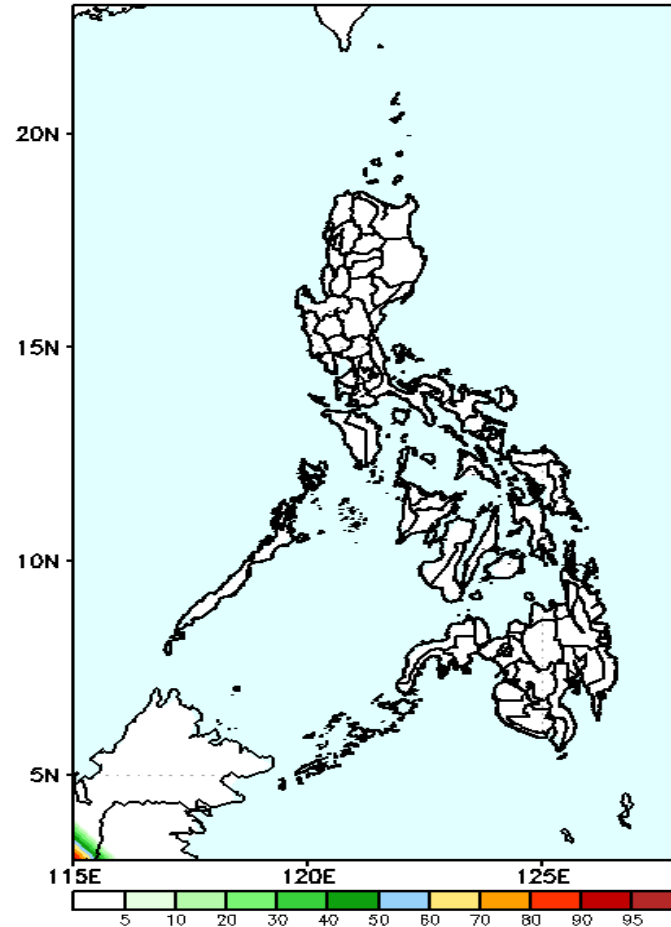
Week 2: Jul 23-29, 2020

GEFS Week-2 Exceedance Prob. > 100mm
Valid: 20200723 - 20200729



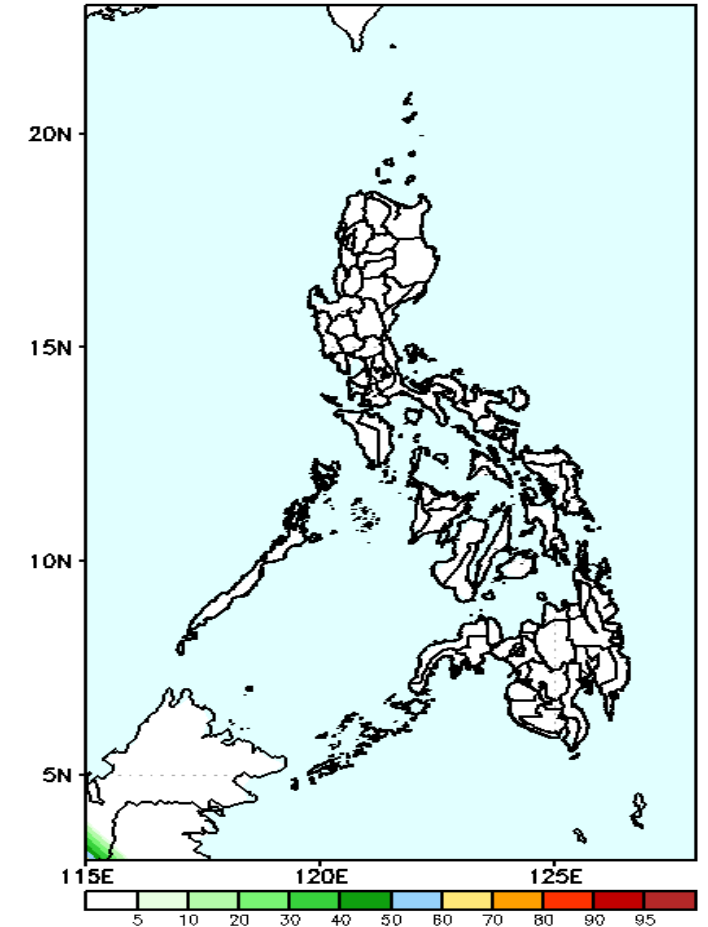
40-70% probability of rainfall to exceed 100mm in Cordillera Region, Mindoro and northern Mindanao while less likely for the rest of the country during the forecast period

GEFS Week-2 Exceedance Prob. > 150mm
Valid: 20200723 - 20200729



Less probability of rainfall to exceed 150mm in most parts of the country during the forecast period.

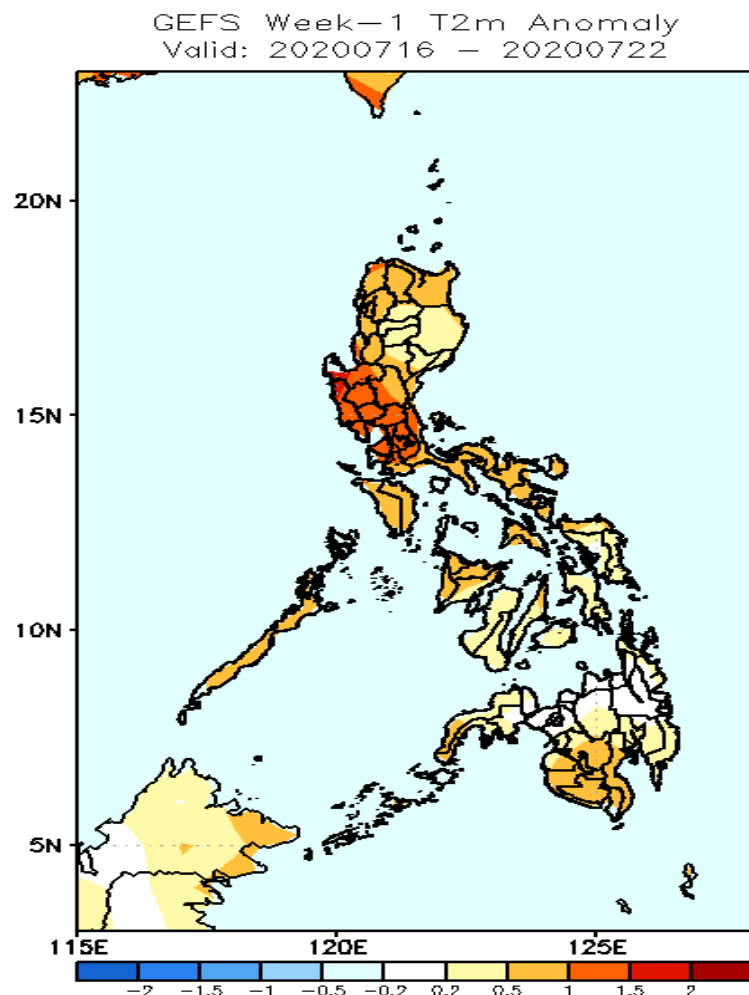
GEFS Week-2 Exceedance Prob. > 200mm
Valid: 20200723 - 20200729



Less probability of rainfall to exceed 200mm in most parts of the country during the forecast period.

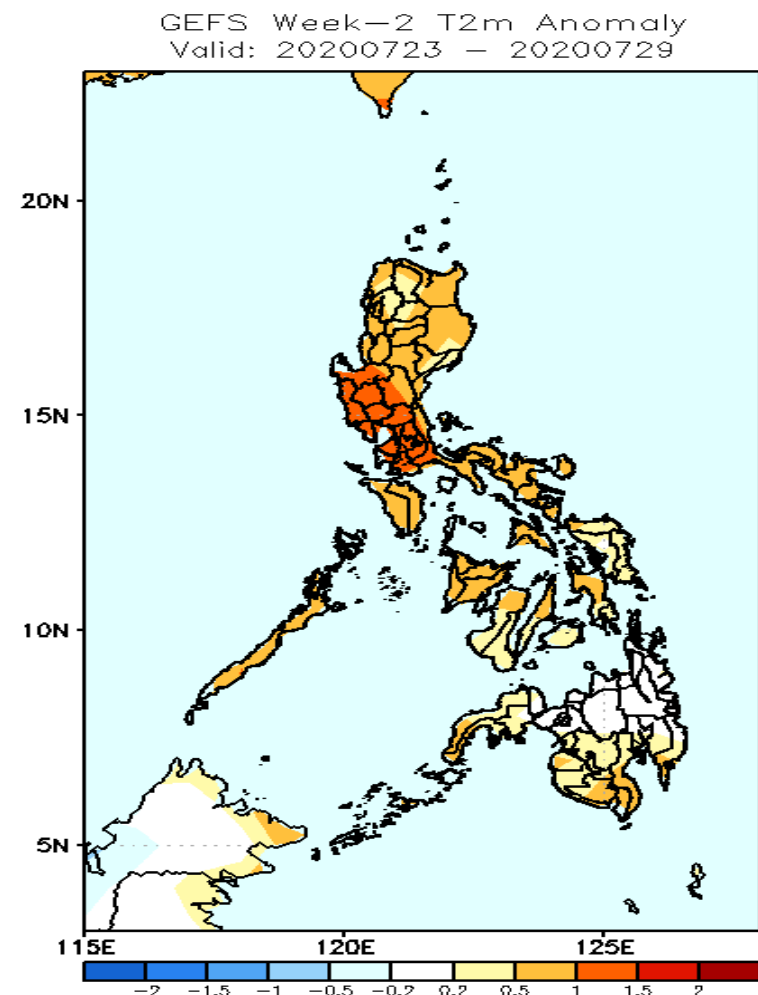


GEFS Week-1 & 2 Forecasts: T2m Anomaly



2m Temperature Week 1: July 16-22, 2020

Slightly warmer to warmer than average surface air temperature will likely experience in most parts of Luzon and Visayas while average to slightly warmer than average temperature in Mindanao during the forecast period.



2m Temperature Week 2: Jul 23-29, 2020

Slightly warmer to warmer than average surface air temperature will likely experience in most parts of Luzon and Visayas while average to slightly warmer than average temperature in Mindanao during the forecast period.