



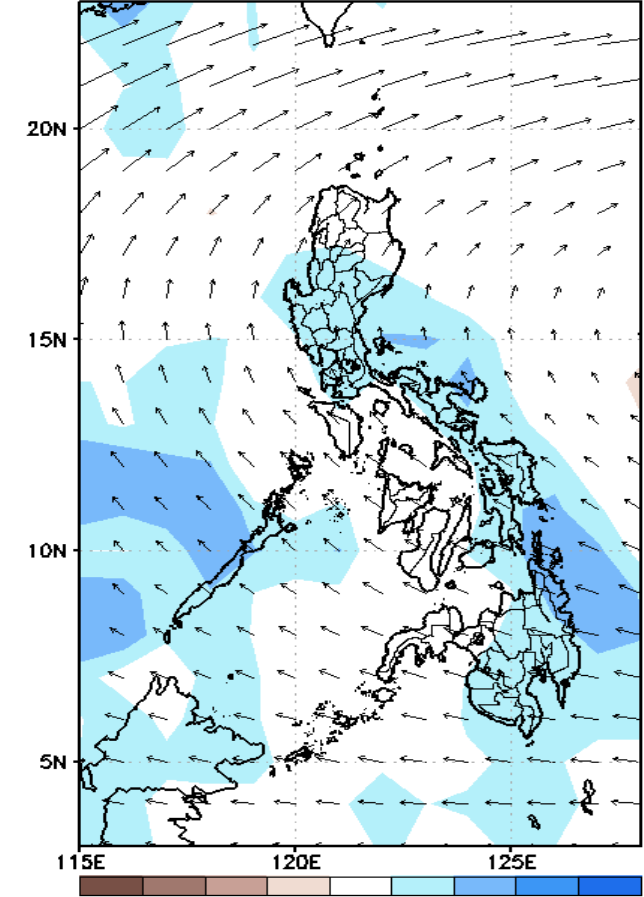
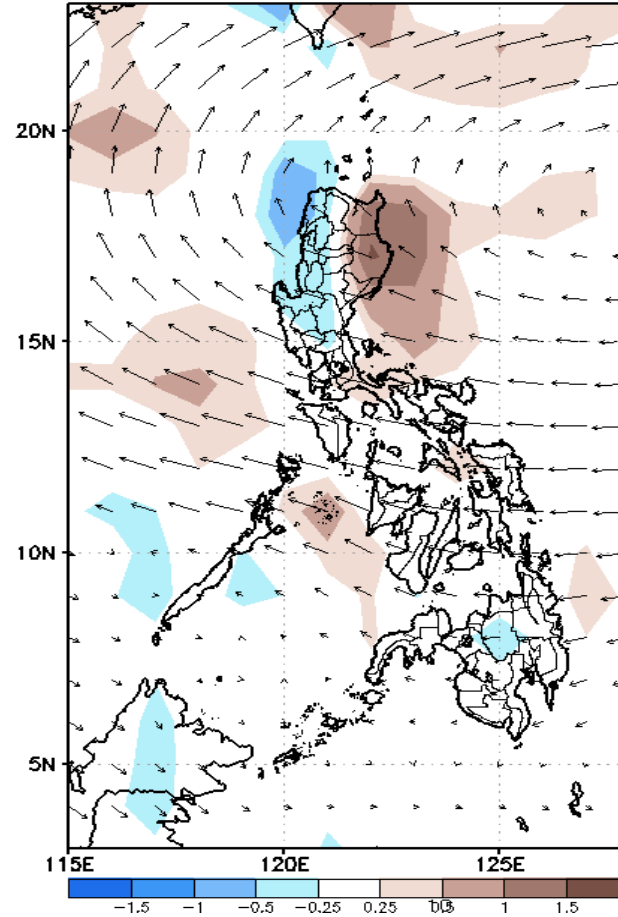
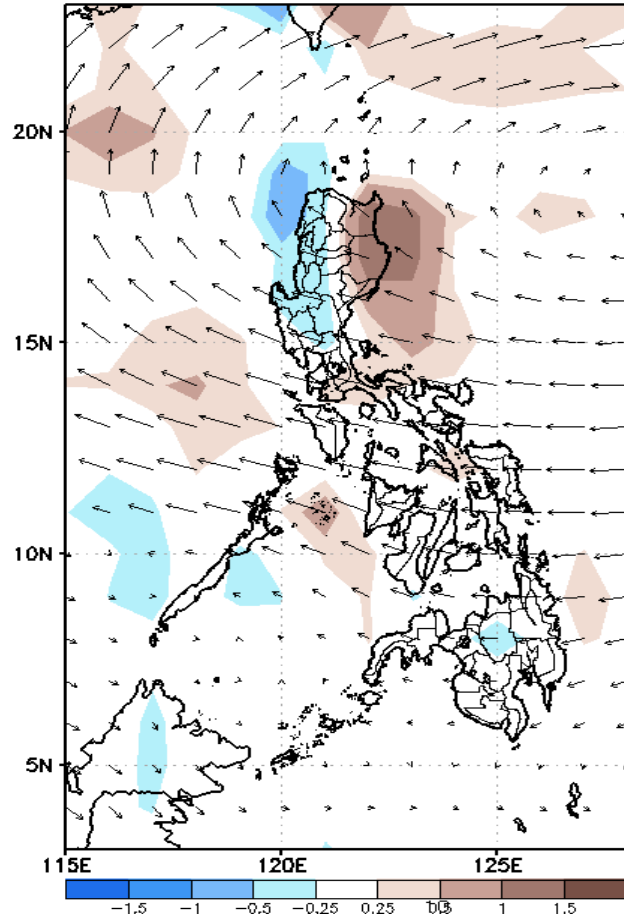
# Week 1 & Week 2 Forecast for the Philippines using GEFS Model



# GEFS Week-1 Forecasts: Divergence & Wind Anomaly

Week 1: Dec 17-23, 2021

GEFS Week-1 850-hPa Divergence and Wind Anom Valid: 20211217 - 20211223  
GEFS Week-1 700-hPa Divergence and Wind Anom Valid: 20211217 - 20211223  
GEFS Week-1 200-hPa Divergence and Wind Anomaly Valid: 20211217 - 20211223

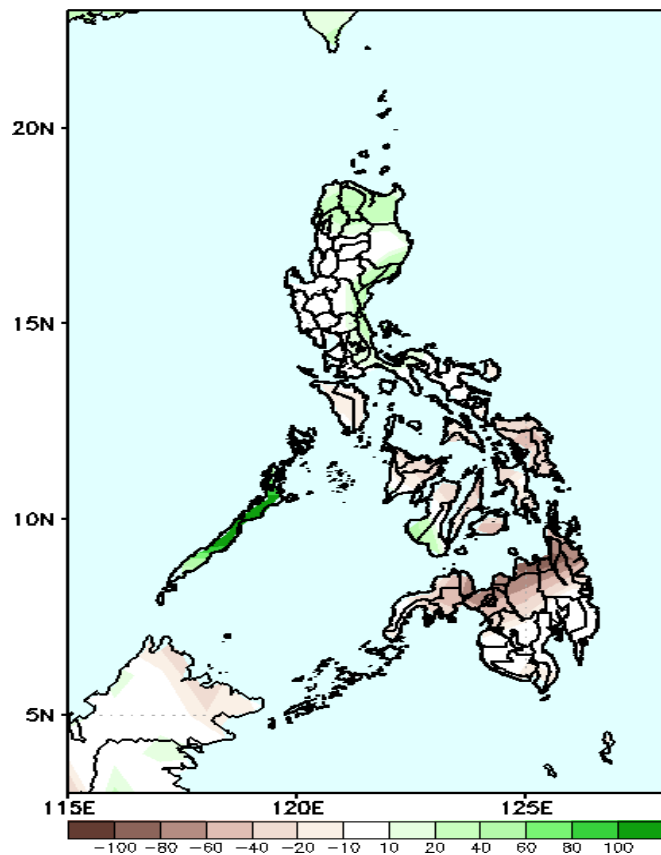


Upper and low level Divergence suggest likelihood of moderate to heavy precipitation in Southern Luzon and most parts of Visayas and Mindanao. Northeast Monsoon affecting the eastern sections of Luzon while Easterlies affecting the rest of the country during the forecast period.

# Precipitation Anomaly and Exceedance Probability > 25/50 mm

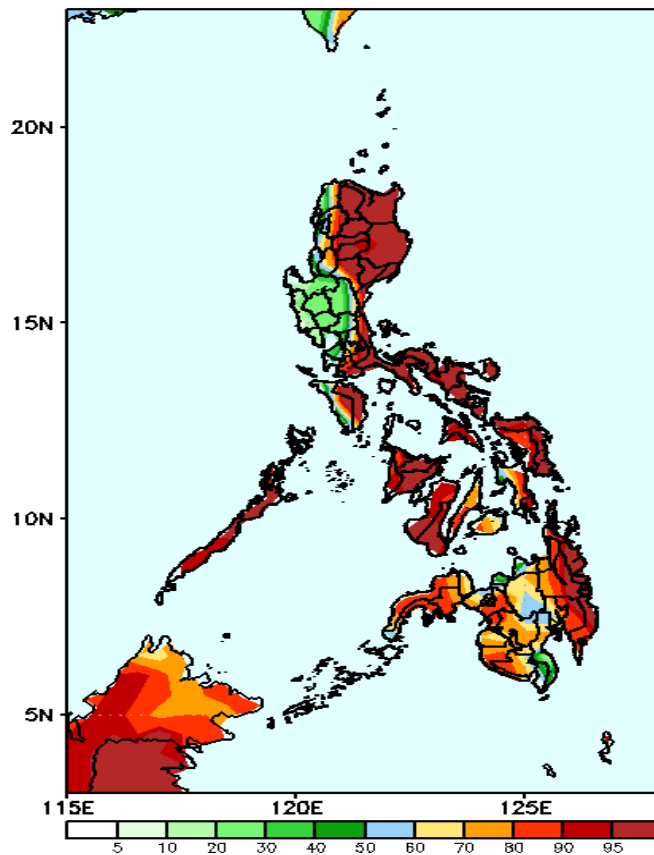
Week 1: Dec 17-23, 2021

GEFS Week-1 Precip Anomaly  
Valid: 20211217 - 20211223



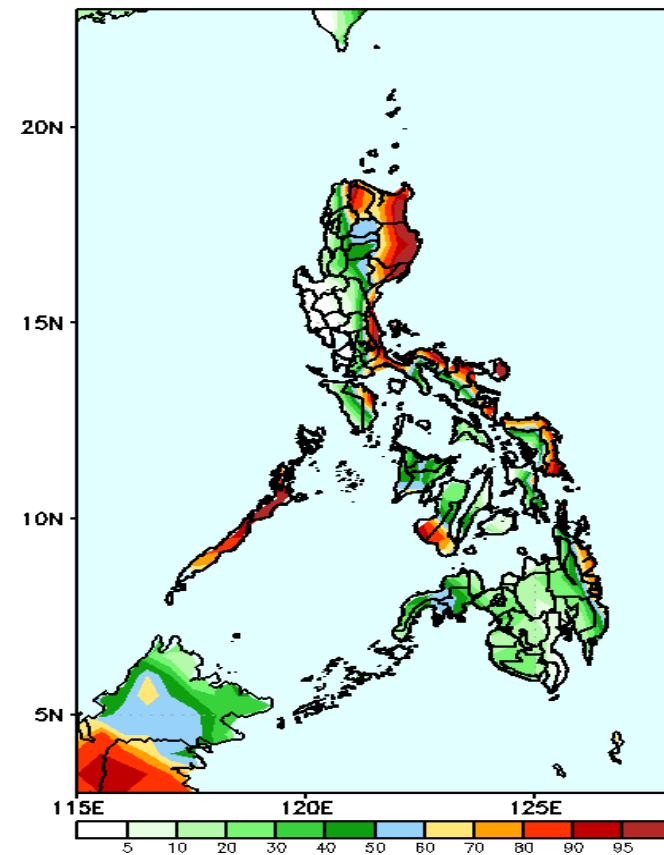
Increase of rainfall of 60-100mm is expected in northern Luzon and most parts of Visayas and Mindanao during the forecast period

GEFS Week-1 Exceedance Prob. > 25mm  
Valid: 20211217 - 20211223



High probability of rainfall to exceed 25mm in most parts of the country except Ilocos Region and most parts of Central Luzon (except Aurora) and Cavite during the forecast period.

GEFS Week-1 Exceedance Prob. > 50mm  
Valid: 20211217 - 20211223

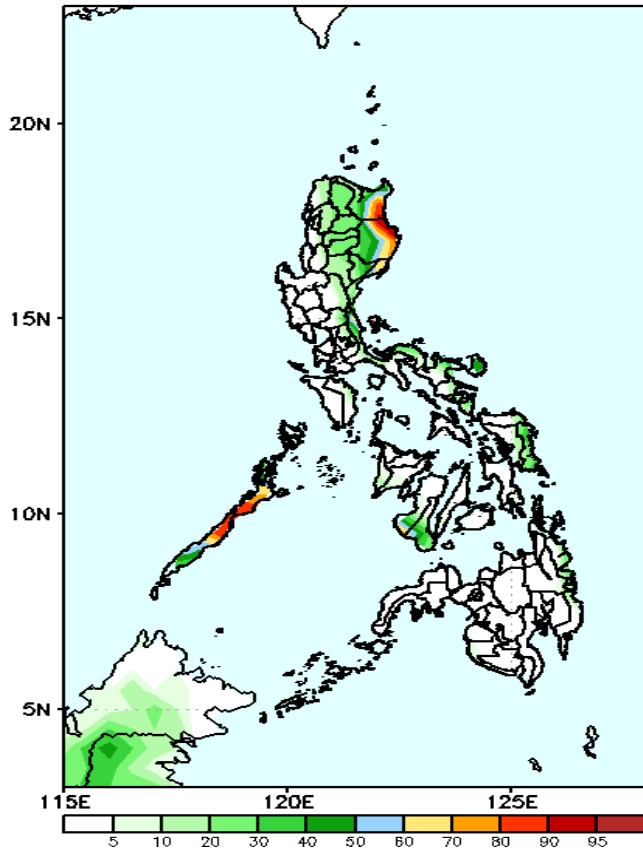


High probability of rainfall to exceed 50mm in some parts of CAR, Cagayan Valley, Quezon, Bicol region, MIMAROPA, most of Visayas, CARAGA, Northern Mindanao, Lanao del Sur, parts of Davao region and Zamboanga peninsula while less likely for the rest of the country during the forecast period.

# Exceedance Probability > 100/150/200 mm

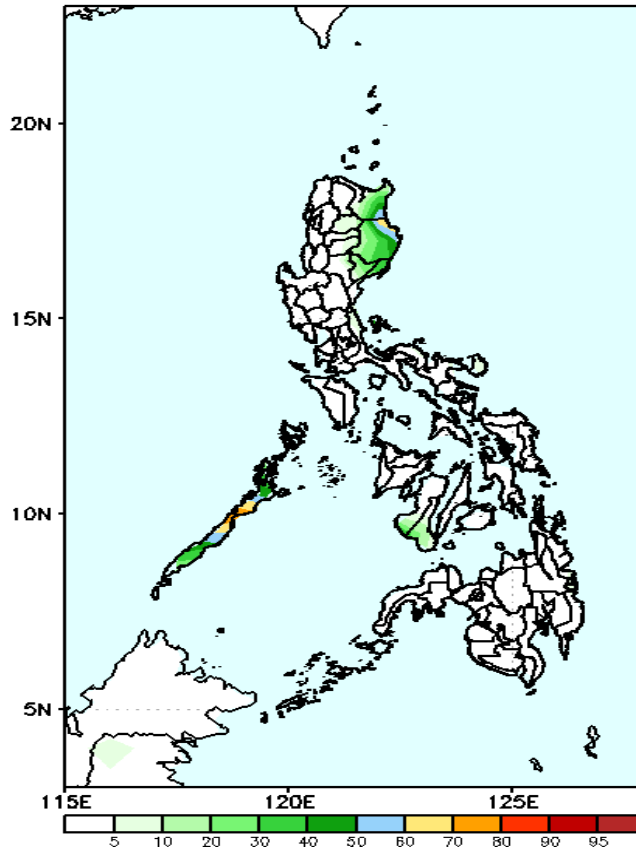
## Week 1: Dec 17-23, 2021

GEFS Week-1 Exceedance Prob. > 100mm  
Valid: 20211217 - 20211223



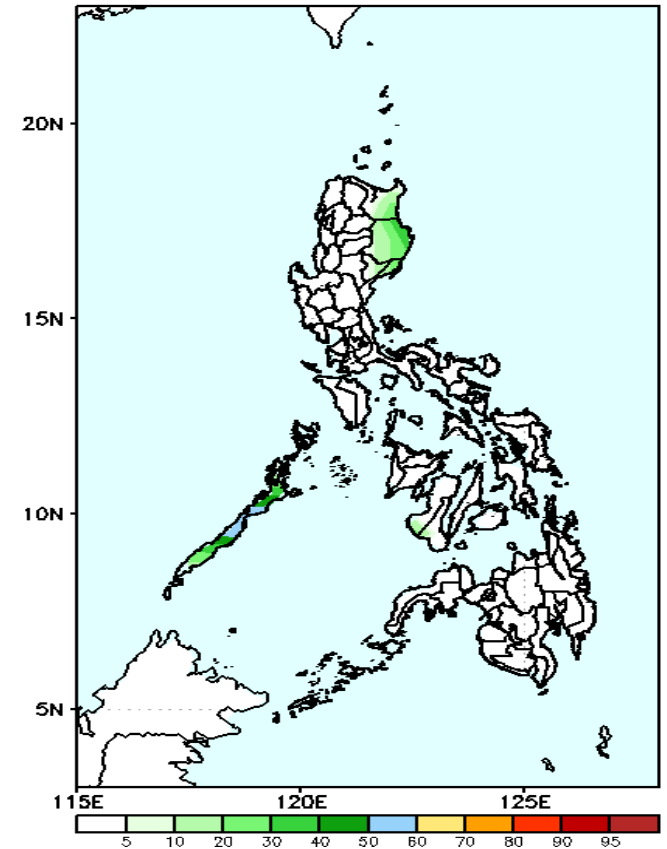
60–90% probability of rainfall to exceed 150mm in some parts of Cagayan and Isabela, Southern Leyte, Central and Western Visayas, CARAGA, Camiguin and Misamis Oriental while less likely for the rest of the county during the forecast period during the forecast period.

GEFS Week-1 Exceedance Prob. > 150mm  
Valid: 20211217 - 20211223



60– 90% probability of rainfall to exceed 150mm in Southern Leyte, Central Visayas, southern portion of Negros Occidental, CARAGA and northern portion of Misamis Oriental while less likely for the rest of the county during the forecast period during the forecast period.

GEFS Week-1 Exceedance Prob. > 200mm  
Valid: 20211217 - 20211223



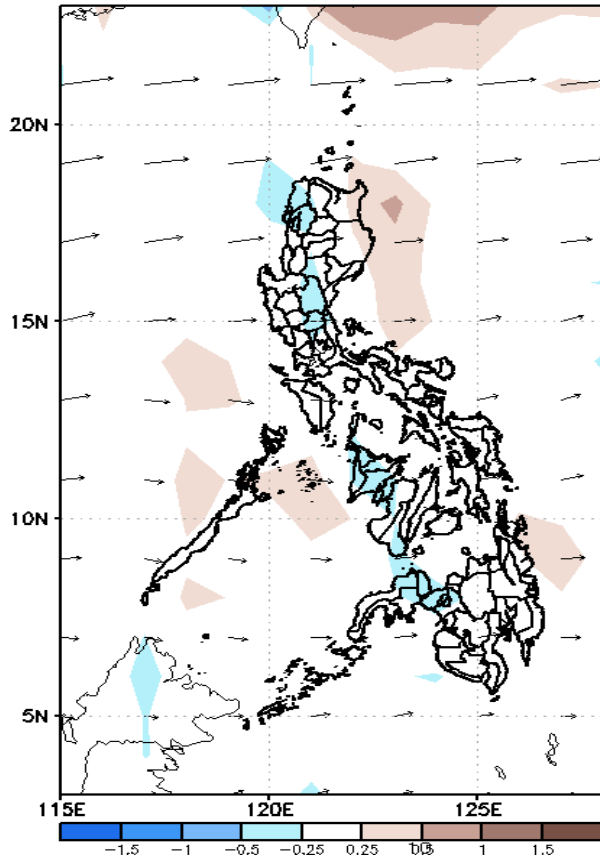
Less probability of rainfall to exceed 200mm in most parts of the country is expected during the forecast period.



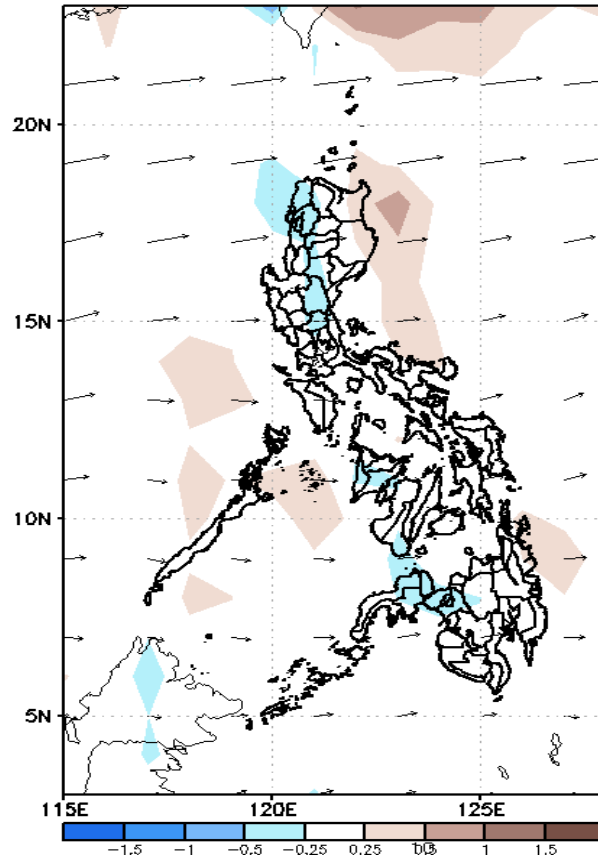
# GEFS Week-2 Forecasts: Divergence & Wind Anomaly

Week 2: Dec 24-30, 2021

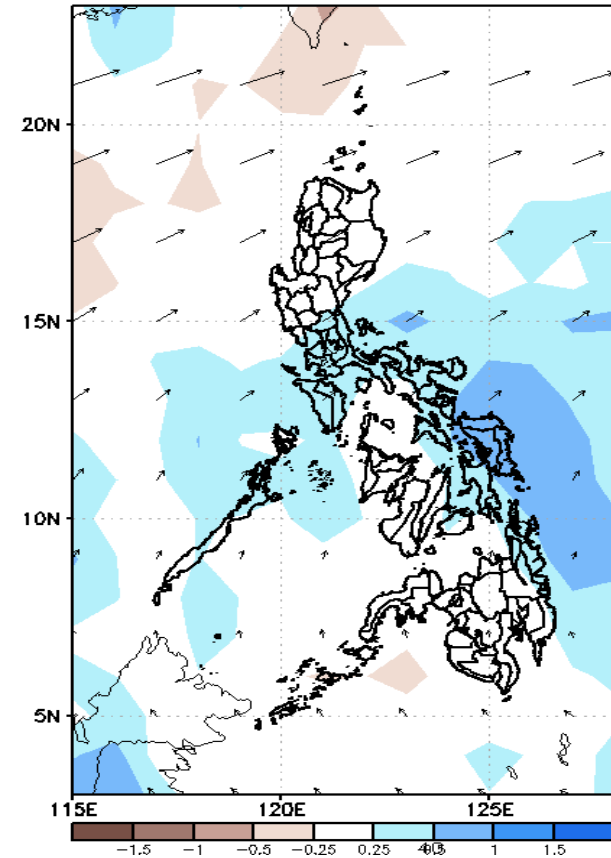
GEFS Week-2 850-hPa Divergence and Wind Anom  
Valid: 20211224 - 20211230



GEFS Week-2 700-hPa Divergence and Wind Anom  
Valid: 20211224 - 20211230



GEFS week-2 200-hPa Divergence and Wind Anom  
Valid: 20211224 - 20211230

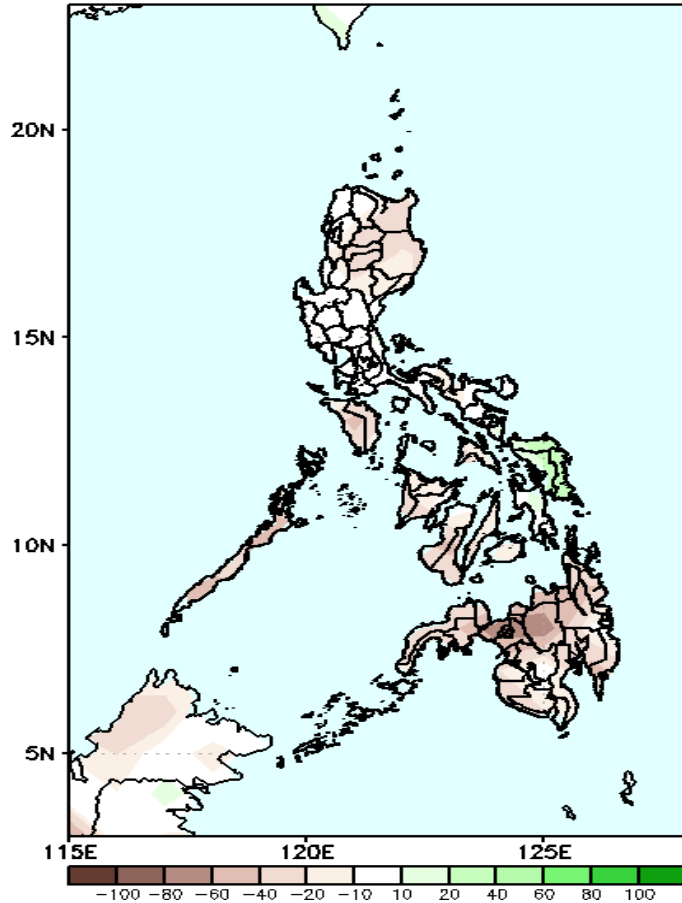


Upper and low level Divergence suggest likelihood of light to moderate precipitation in Central and Southern Luzon and most parts of Visayas and Mindanao. Easterlies affecting most parts of the country during the forecast period.

# Precipitation Anomaly and Exceedance Probability > 25/50 mm

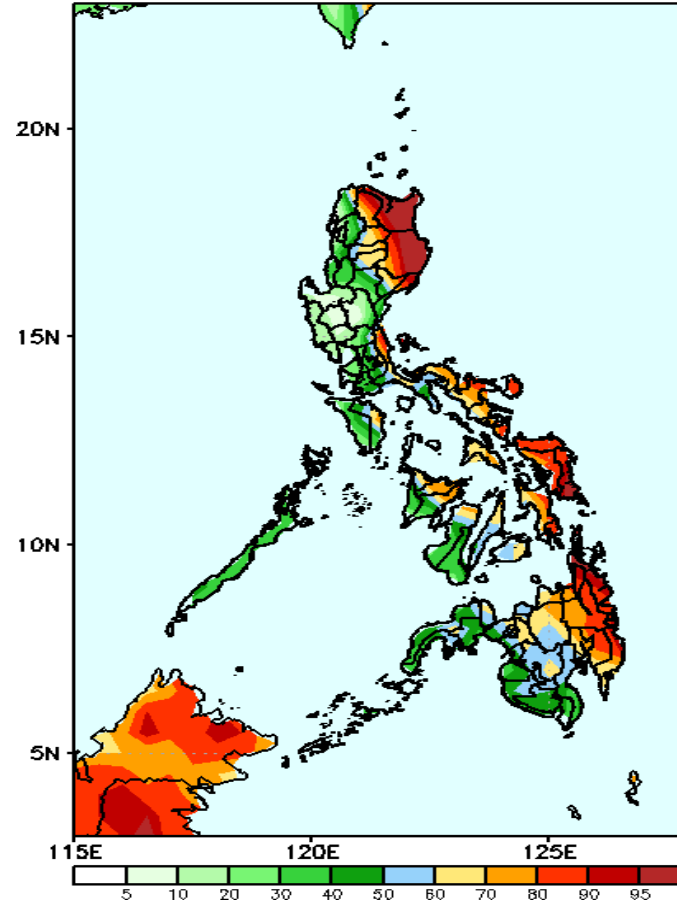
## Week 2: Dec 24-30, 2021

GEFS Week-2 Precip Anomaly  
Valid: 20211224 - 20211230



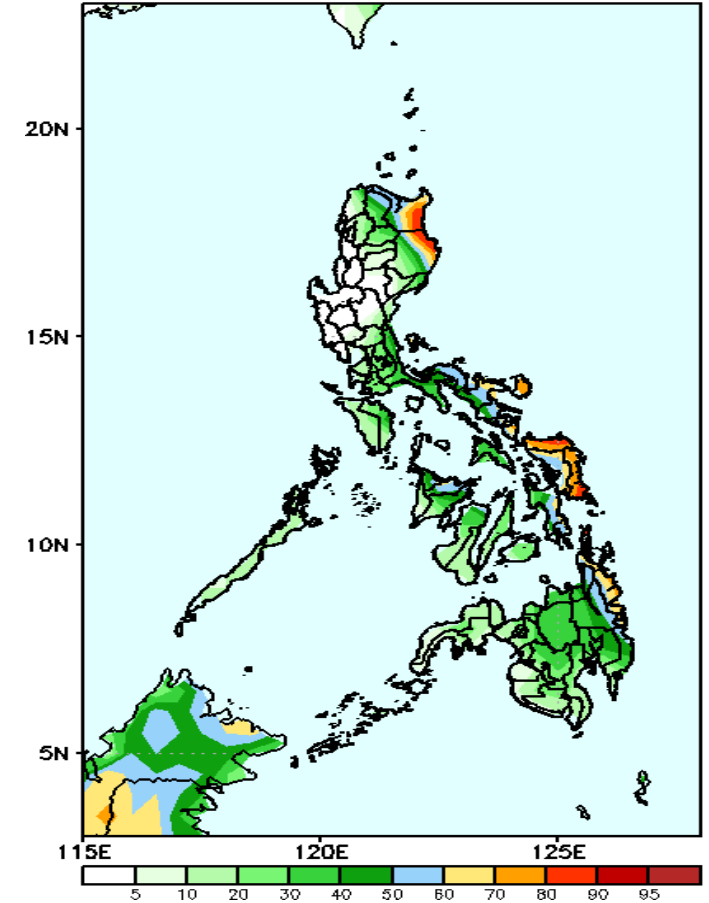
Rainfall deficit of 40-100mm is expected in most parts of the country during the forecast period.

GEFS Week-2 Exceedance Prob. > 25mm  
Valid: 20211224 - 20211230



High probability of rainfall to exceed 25mm in some parts of CAR, Cagayan Valley, Aurora, Quezon, Bicol Region, Palawan, most of Visayas and Mindanao during the forecast period.

GEFS Week-2 Exceedance Prob. > 50mm  
Valid: 20211224 - 20211230



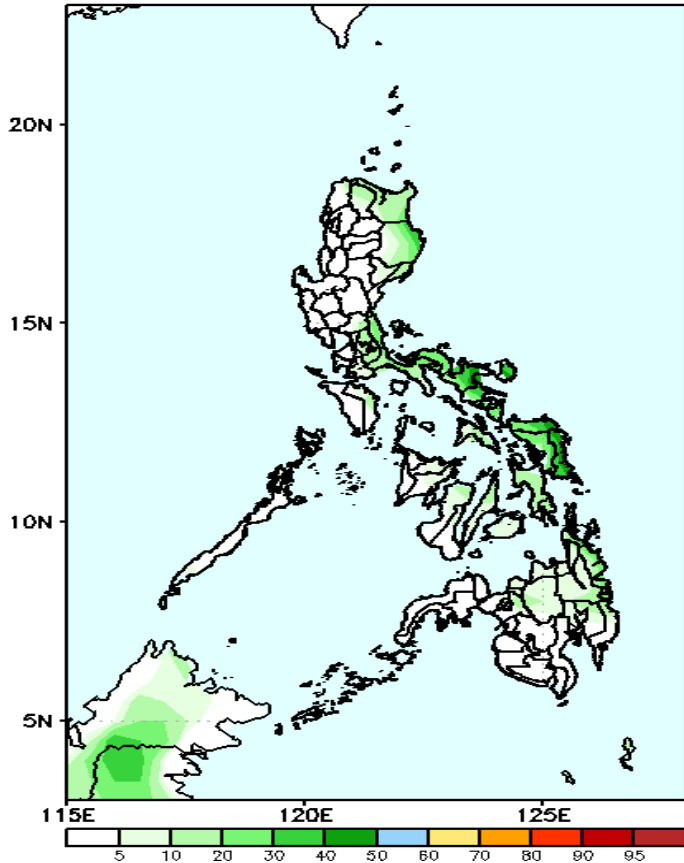
Low probability of rainfall to exceed 50mm in most parts of the country except Eastern Samar and Surigao provinces during the forecast period.



# Exceedance Probability > 100/150/200 mm

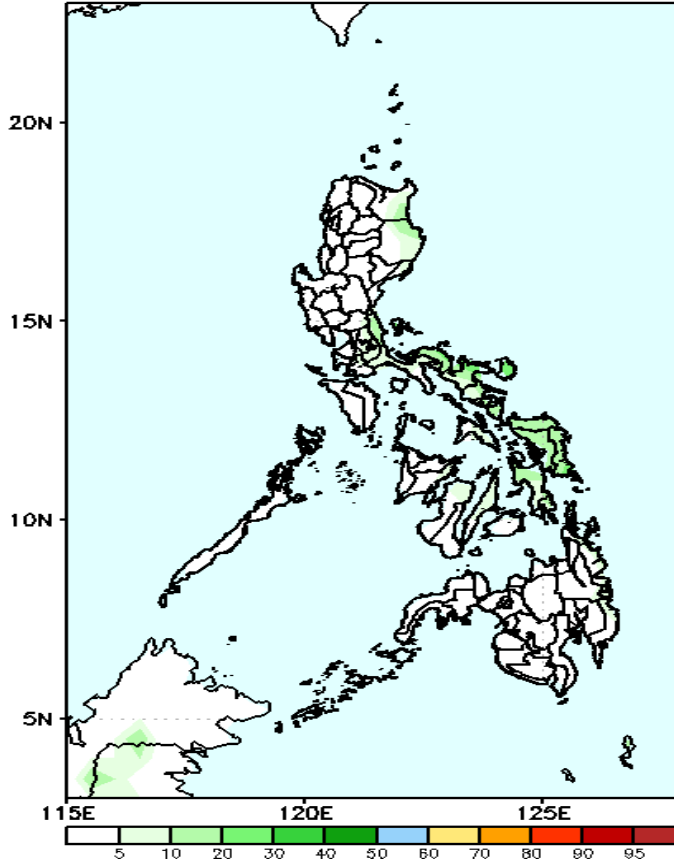
## Week 2: Dec 24-30, 2021

GEFS Week-2 Exceedance Prob. > 100mm  
Valid: 20211224 - 20211230



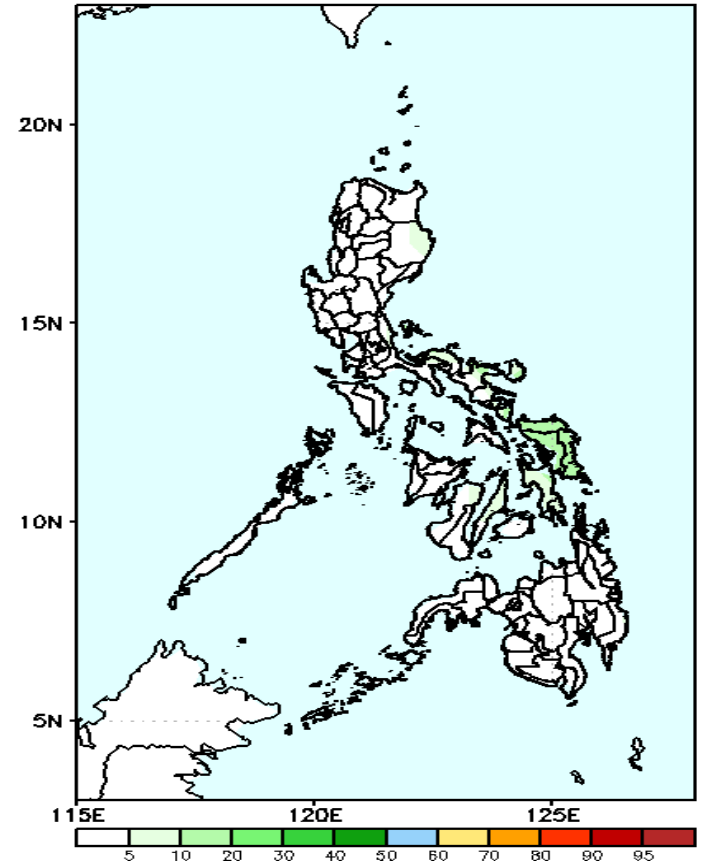
Less probability of rainfall to exceed 100mm in most parts of the country is expected during the forecast period.

GEFS Week-2 Exceedance Prob. > 150mm  
Valid: 20211224 - 20211230



Less probability of rainfall to exceed 150mm in most parts of the country is expected during the forecast period.

GEFS Week-2 Exceedance Prob. > 200mm  
Valid: 20211224 - 20211230

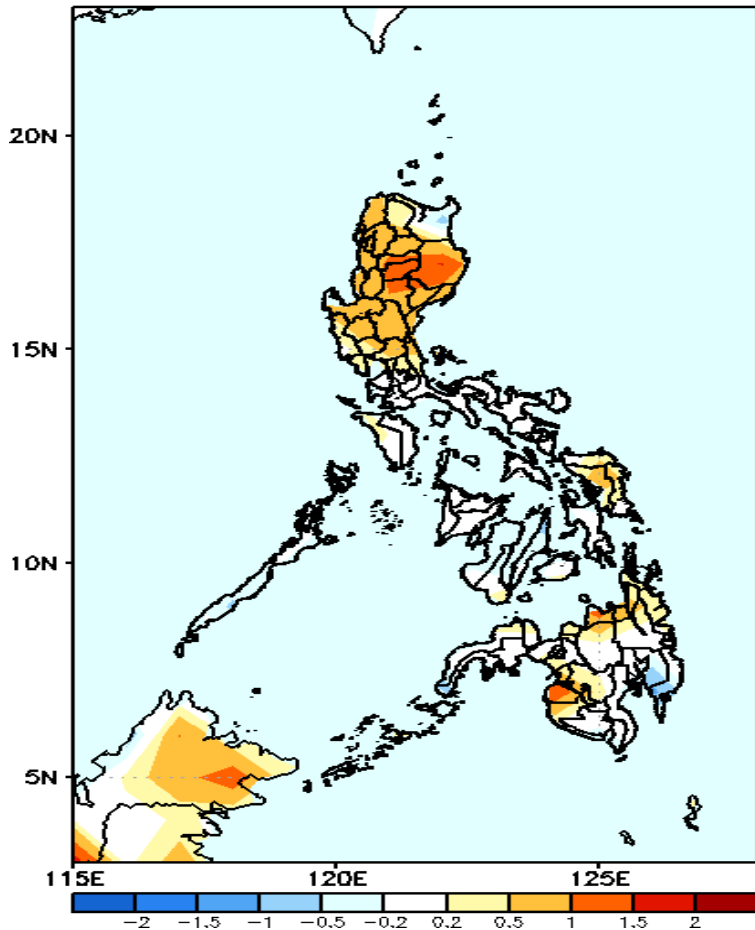


Less probability of rainfall to exceed 200mm in most parts of the country is expected during the forecast period.



# GEFS Week-1 & 2 Forecasts: T2m Anomaly

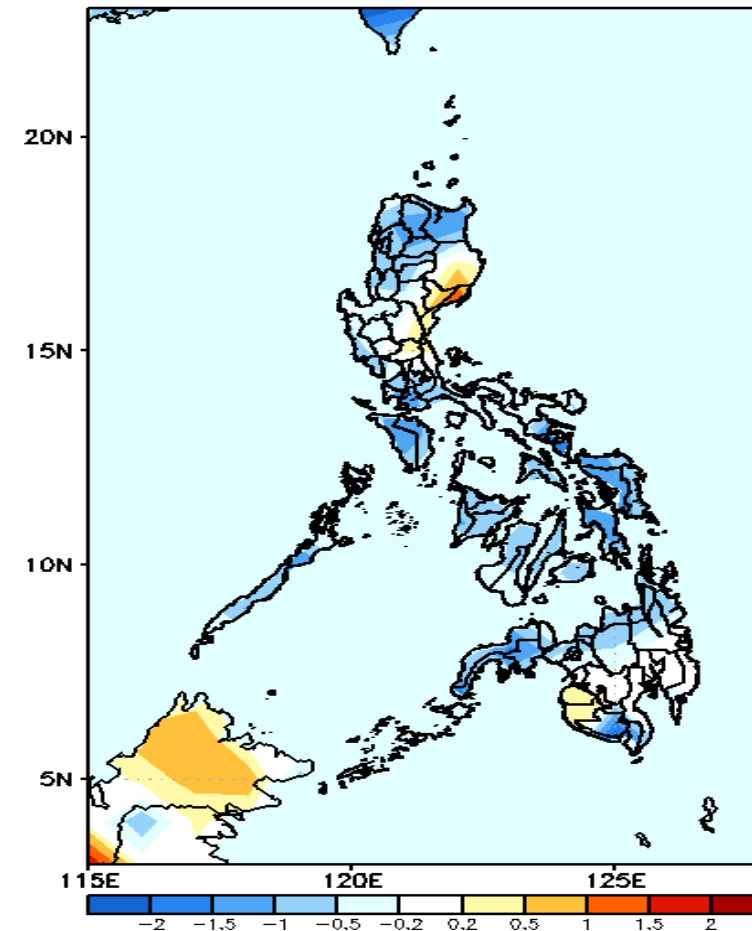
GEFS Week-1 T2m Anomaly  
Valid: 20211217 - 20211223



## 2m Temperature Week 1: Dec 17-23, 2021

Slightly warmer to warmer than average surface air temperature will likely experience in most parts of Luzon, Eastern Visayas, Misamis Oriental and Maguindanao while average to slightly cooler temperature for the rest of the country during the forecast period.

GEFS Week-2 T2m Anomaly  
Valid: 20211224 - 20211230



## 2m Temperature Week 2: Dec 24-30, 2021

Slightly warmer to warmer than average surface air temperature will likely experience in most parts of eastern Luzon & Central Luzon (especially Isabela) while average to slightly cooler temperature for the rest of the country during the forecast period.

