



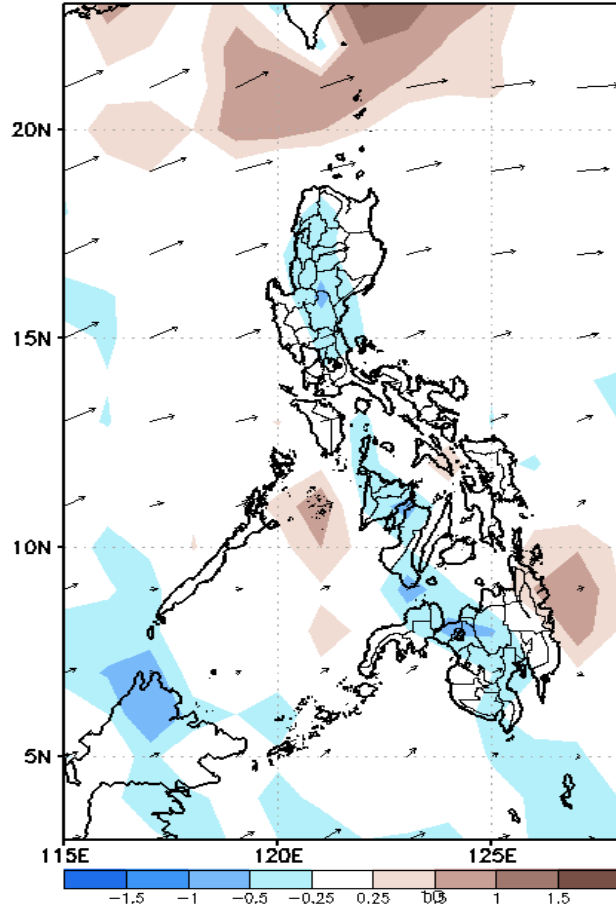
# Week 1 & Week 2 Forecast for the Philippines using GEFS Model



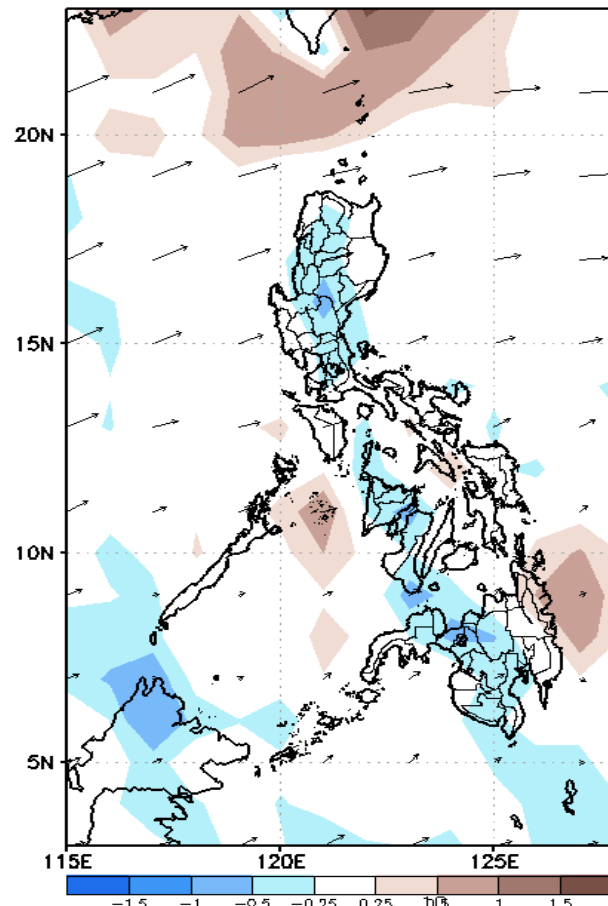
# GEFS Week-1 Forecasts: Divergence & Wind Anomaly

**Week 1: Jan 17-23, 2022**

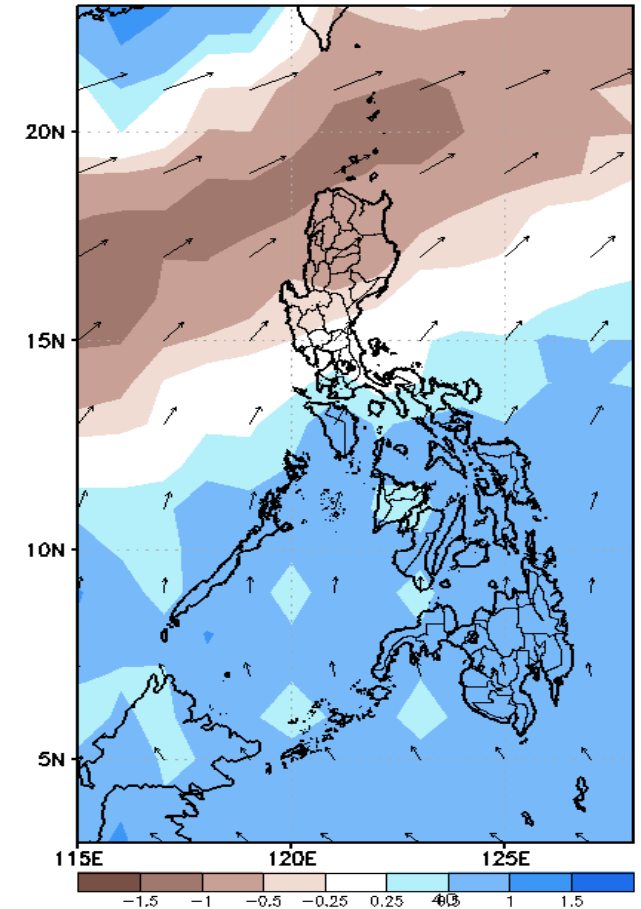
GEFS Week-1 850-hPa Divergence and Wind Anom  
Valid: 20220117 - 20220123



GEFS Week-1 700-hPa Divergence and Wind Anom  
Valid: 20220117 - 20220123



GEFS Week-1 200-hPa Divergence and Wind Anom  
Valid: 20220117 - 20220123

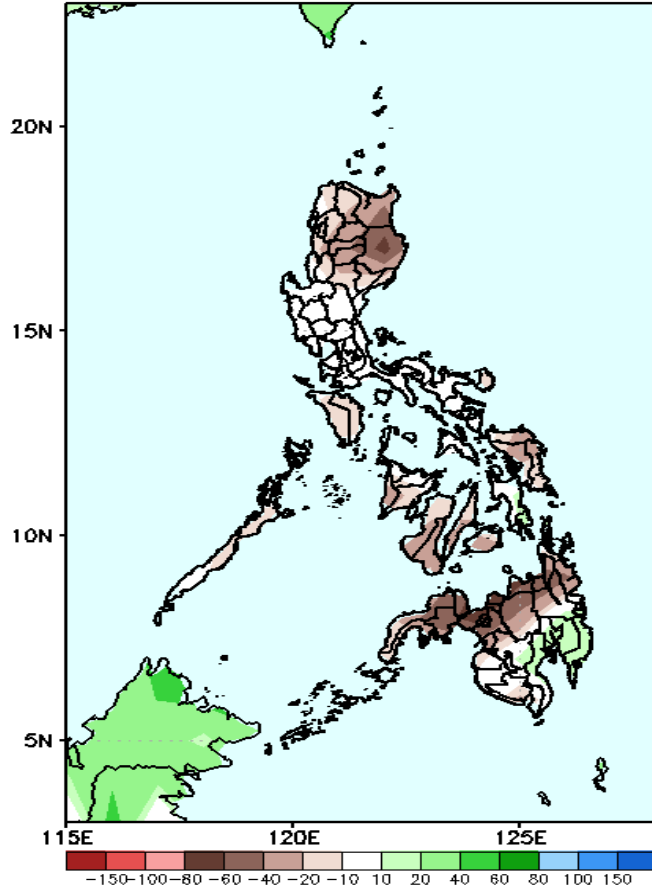


Upper and low level Divergence suggest a likelihood of light to moderate precipitation in most parts of Central Luzon, Visayas and Mindanao. Northeast Monsoon affecting eastern sections of Luzon while Easterlies affecting the rest of the country during the forecast period.

# Precipitation Anomaly and Exceedance Probability > 25/50 mm

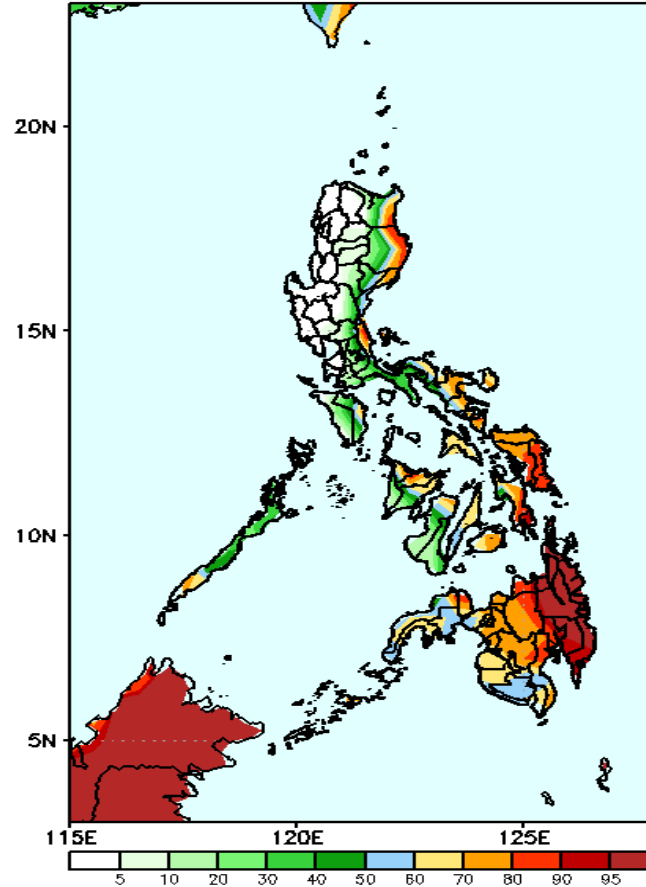
**Week 1: Jan 17-23, 2022**

GEFS Week-1 Precip Anomaly  
Valid: 20220117 - 20220123



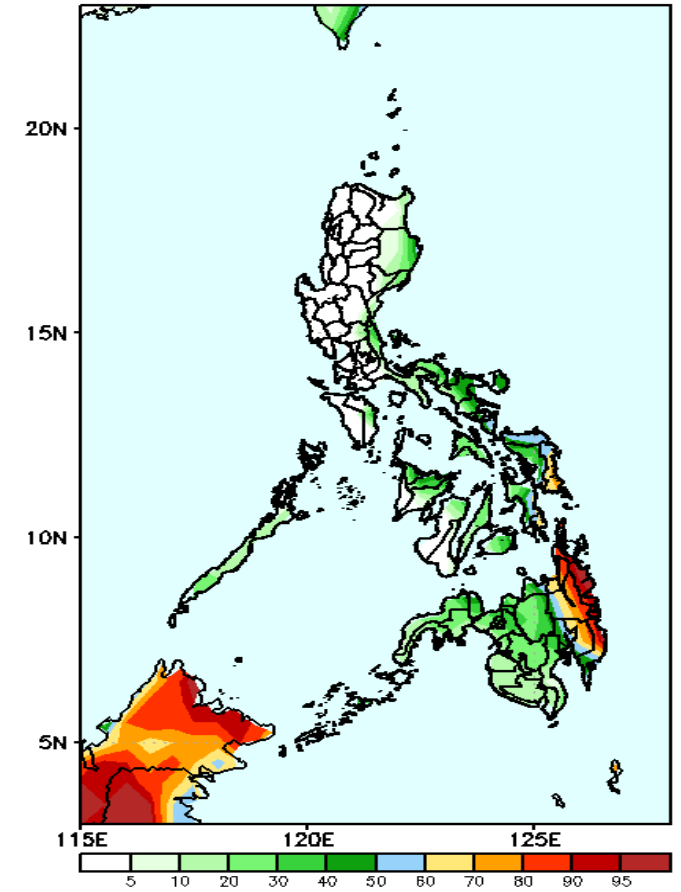
Rainfall deficit of 20-80mm is expected in most parts of Cordillera Region & Cagayan Valley and in most parts of Visayas and northern Mindanao during the forecast period.

GEFS Week-1 Exceedance Prob. > 25mm  
Valid: 20220117 - 20220123



High probability of rainfall to exceed 25mm in eastern parts of Cagayan & Isabela, Rizal, most parts of Bicol Region, Eastern & Central Visayas, some parts of Western Visayas and most parts of Mindanao while less likely for the rest of the county during the forecast period.

GEFS Week-1 Exceedance Prob. > 50mm  
Valid: 20220117 - 20220123



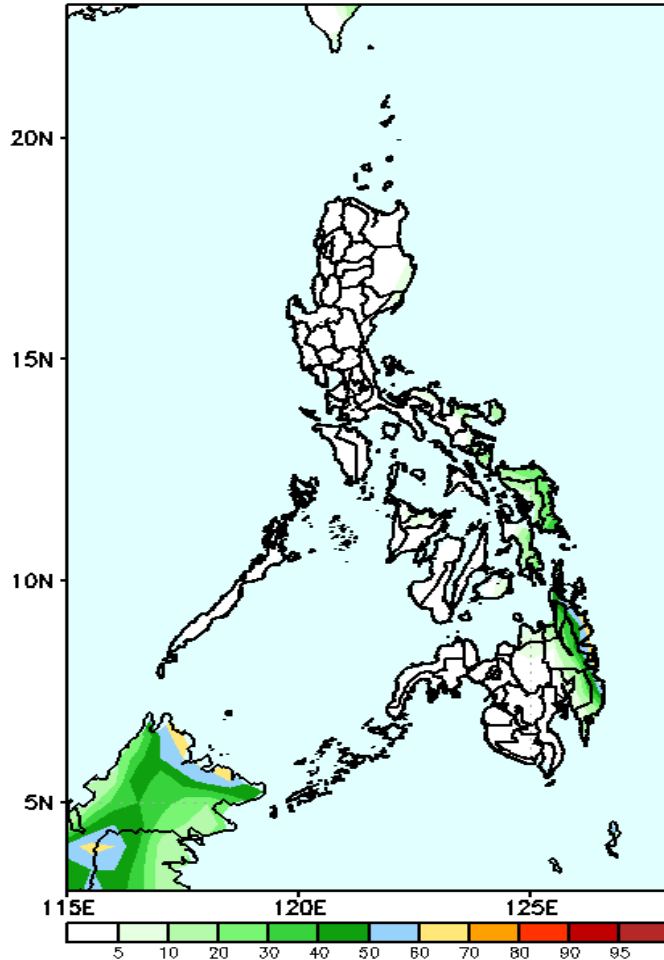
High probability of rainfall to exceed 50mm in most parts of CARAGA & Davao Region while less likely for the rest of the county during the forecast period.



# Exceedance Probability > 100/150/200 mm

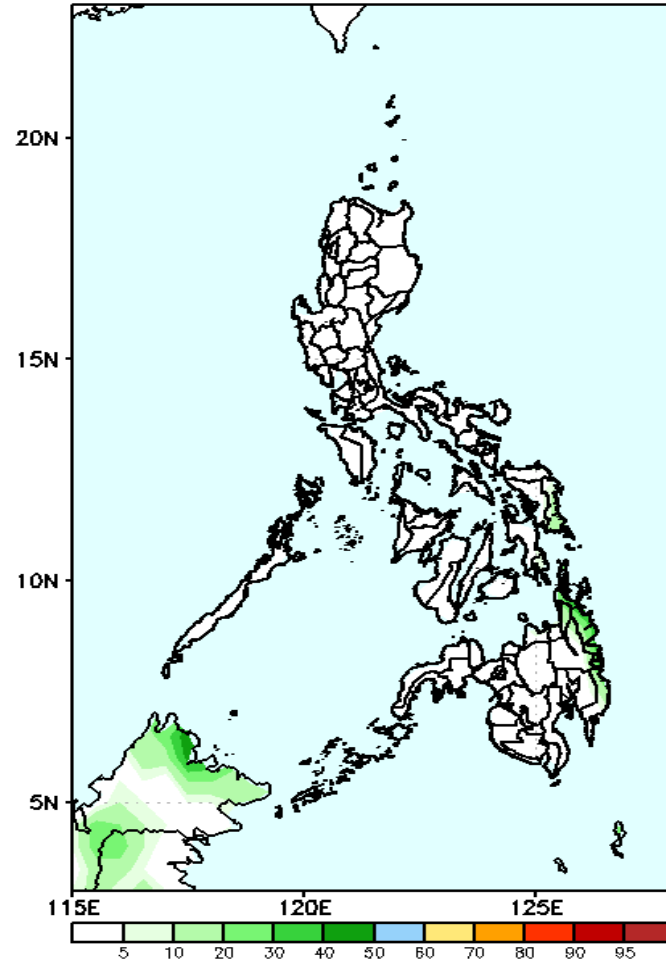
## Week 1: Jan 17-23, 2022

GEFS Week-1 Exceedance Prob. > 100mm  
Valid: 20220117 - 20220123



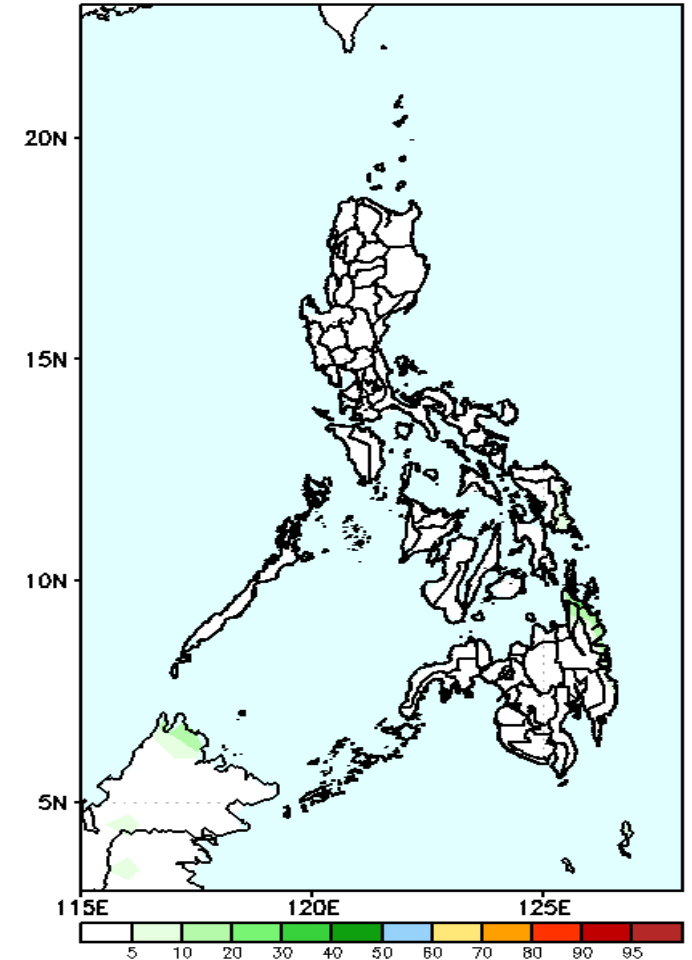
Low probability of rainfall to exceed 100mm in most parts of the country is expected during the forecast period.

GEFS Week-1 Exceedance Prob. > 150mm  
Valid: 20220117 - 20220123



Low probability of rainfall to exceed 150mm in most parts of the country is expected during the forecast period.

GEFS Week-1 Exceedance Prob. > 200mm  
Valid: 20220117 - 20220123

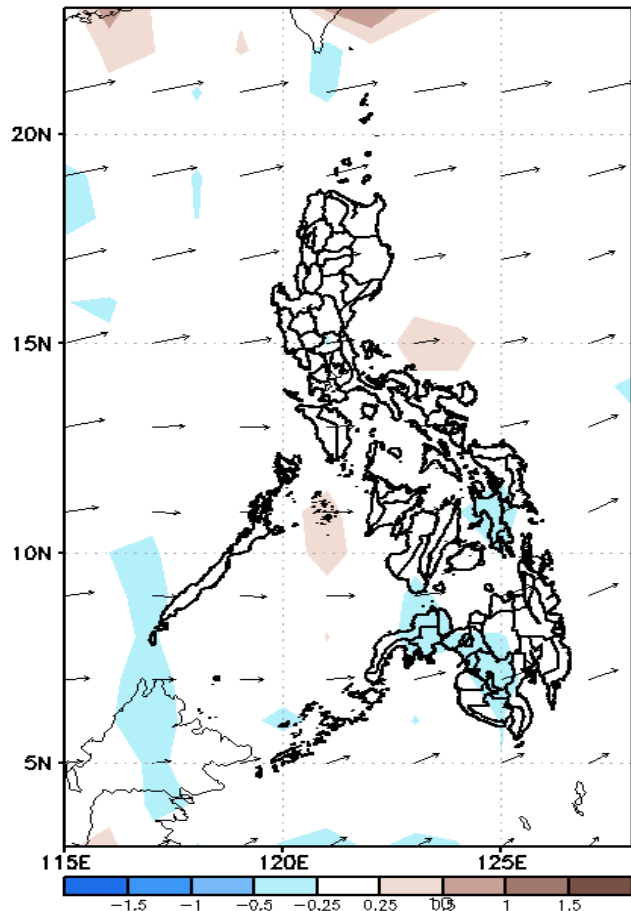


Low probability of rainfall to exceed 200mm in most parts of the country is expected during the forecast period.

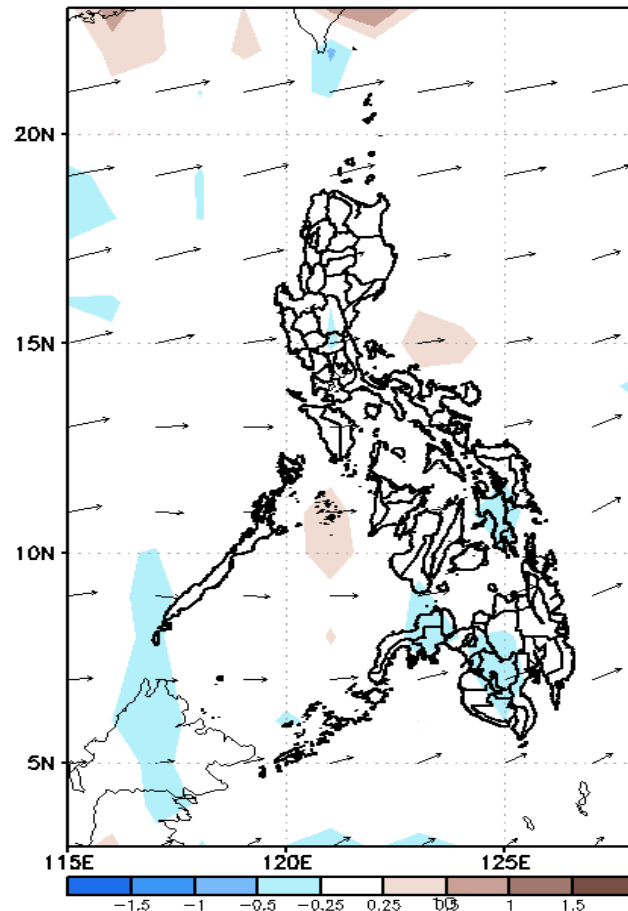
# GEFS Week-2 Forecasts: Divergence & Wind Anomaly

Week 2: Jan 24-30, 2022

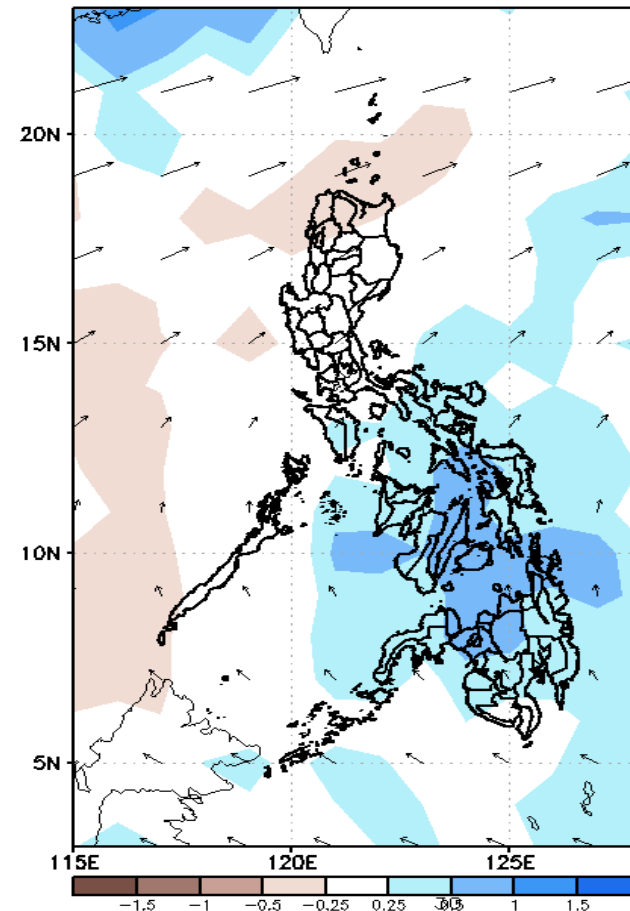
GEFS Week-2 850-hPa Divergence and Wind Anom  
Valid: 20220124 - 20220130



GEFS Week-2 700-hPa Divergence and Wind Anom  
Valid: 20220124 - 20220130



GEFS week-2 200-hPa Divergence and Wind Anom  
Valid: 20220124 - 20220130

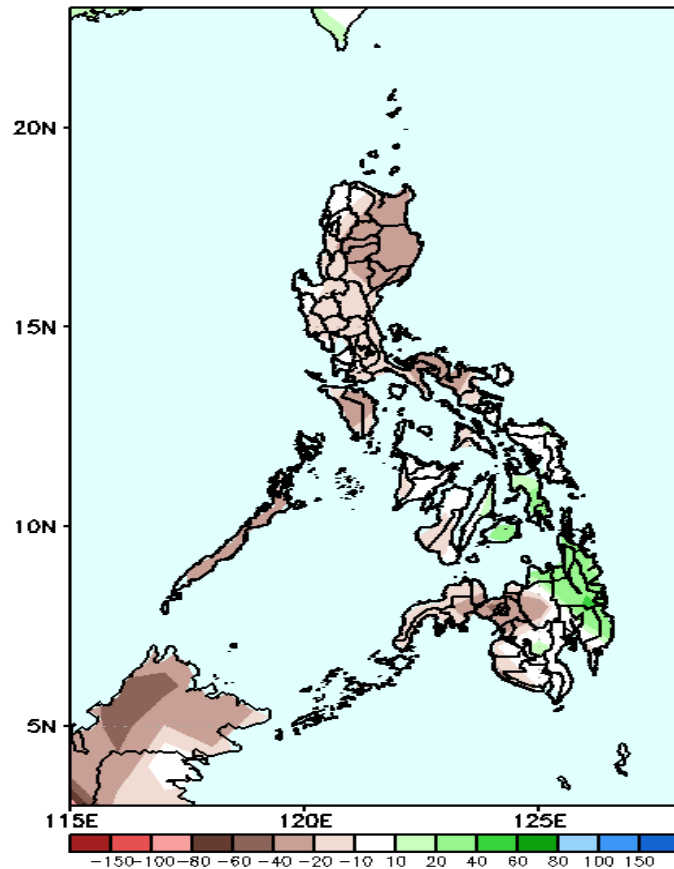


Upper and low level Divergence suggest a likelihood of light to moderate precipitation in Bicol region, Visayas and Mindanao. Northeast Monsoon affecting Northern Luzon while Easterlies affecting the rest of the country during the forecast period.

# Precipitation Anomaly and Exceedance Probability > 25/50 mm

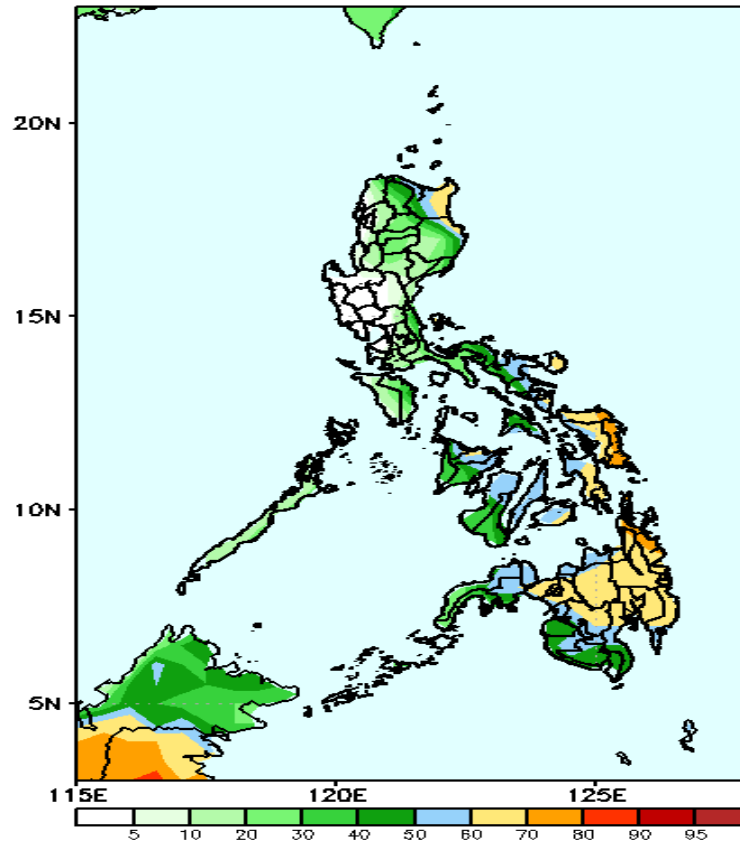
**Week 2: Jan 24-30, 2022**

GEFS Week-2 Precip Anomaly  
Valid: 20220124 - 20220130



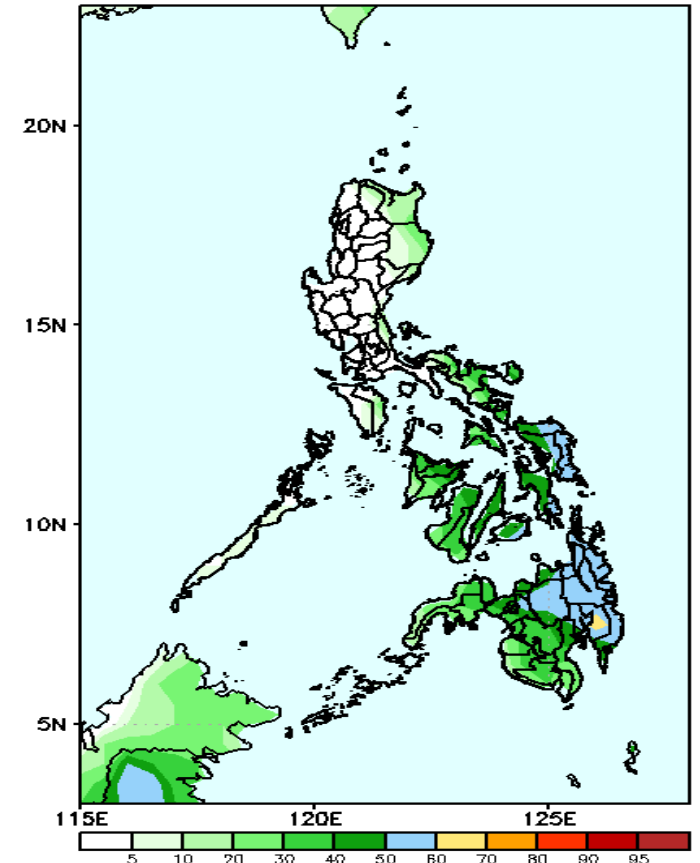
Rainfall deficit of 40-60mm is expected in most parts of the country except in Bohol, Samar Provinces and eastern Mindanao during the forecast period

GEFS Week-2 Exceedance Prob. > 25mm  
Valid: 20220124 - 20220130



60-85% probability of rainfall to exceed 25mm in Cagayan, Catanduanes, Eastern Visayas and most parts of Mindanao while less likely for the rest of the country during the forecast period.

GEFS Week-2 Exceedance Prob. > 50mm  
Valid: 20220124 - 20220130



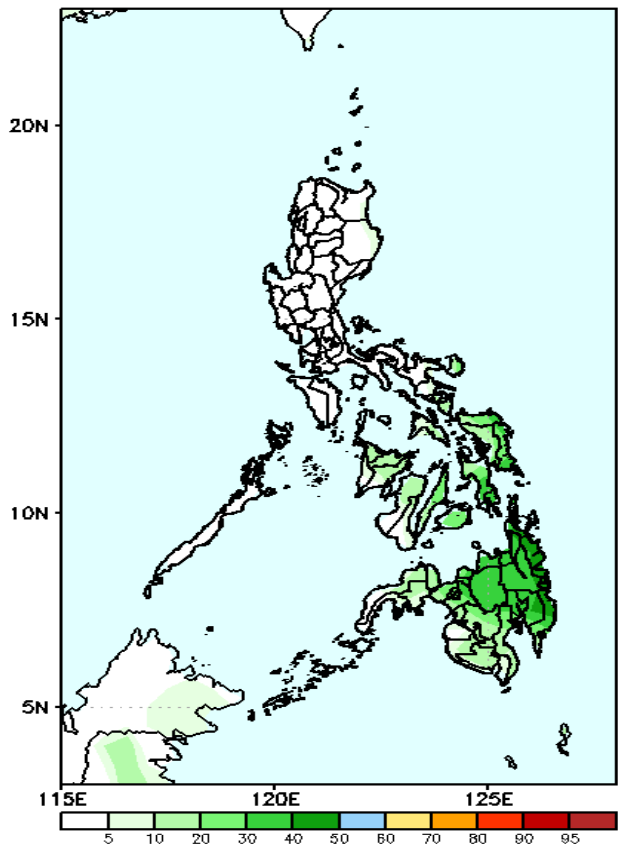
Low probability of rainfall to exceed 50mm in most parts of the country is expected during the forecast period.



# Exceedance Probability > 100/150/200 mm

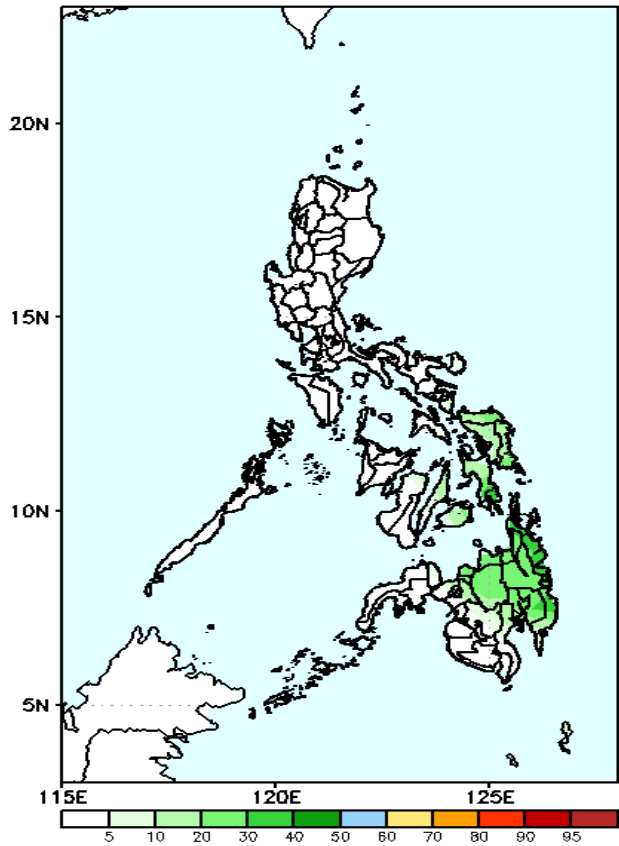
Week 2: Jan 24-30, 2022

GEFS Week-2 Exceedance Prob. > 100mm  
Valid: 20220124 - 20220130



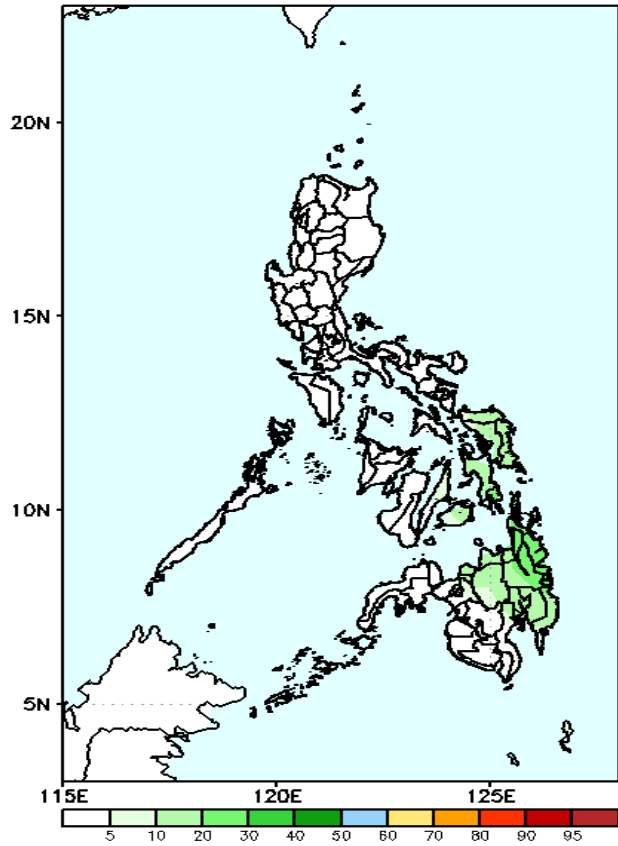
Low probability of rainfall to exceed 100mm in most parts of the country is expected during the forecast period.

GEFS Week-2 Exceedance Prob. > 150mm  
Valid: 20220124 - 20220130



Low probability of rainfall to exceed 150mm in most parts of the country is expected during the forecast period.

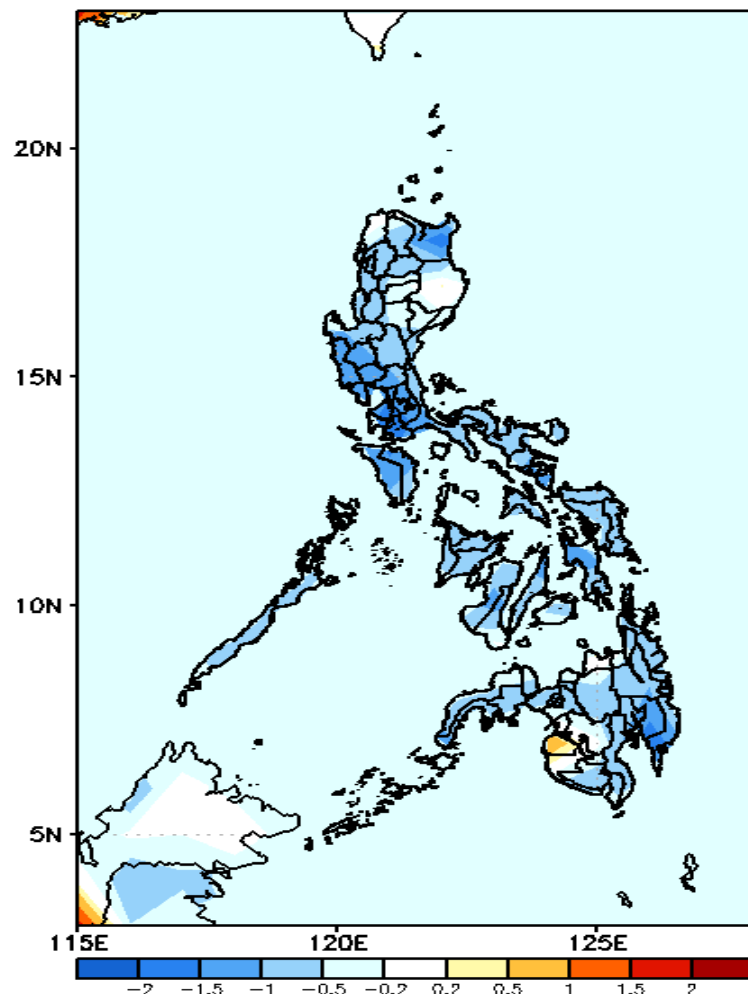
GEFS Week-2 Exceedance Prob. > 200mm  
Valid: 20220124 - 20220130



Low probability of rainfall to exceed 200mm in most parts of the country is expected during the forecast period.

# GEFS Week-1 & 2 Forecasts: T2m Anomaly

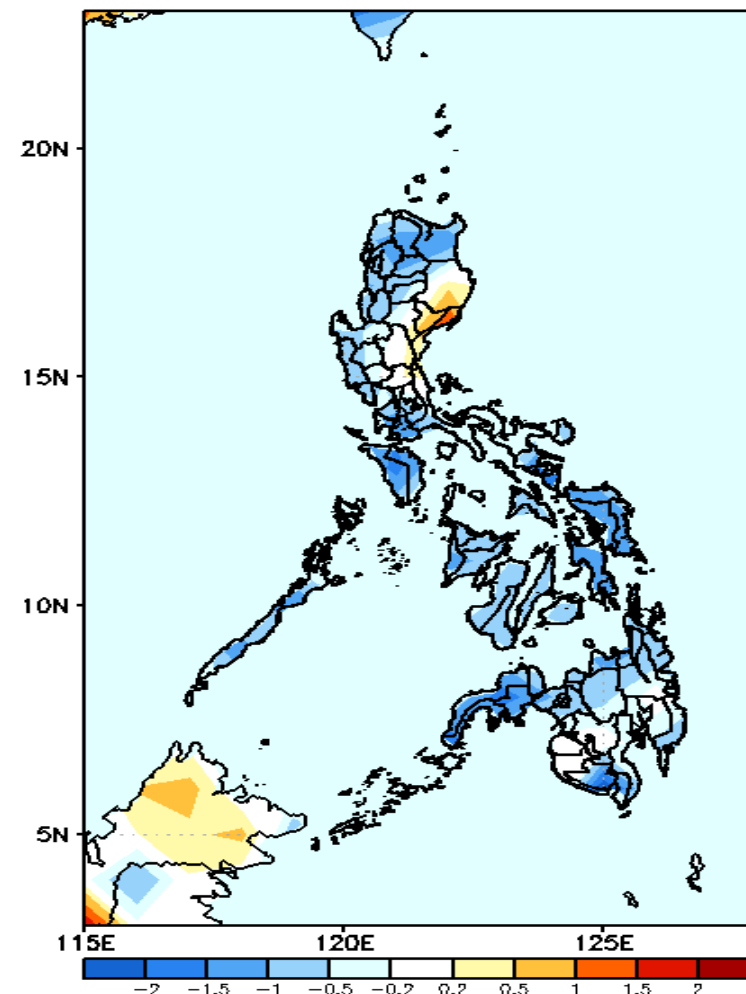
GEFS Week-1 T2m Anomaly  
Valid: 20220117 – 20220123



## 2m Temperature Week 1: Jan 17-23, 2022

Cooler than average surface air temperature will likely experience in most parts of the country except in Maguindanao during the forecast period.

GEFS Week-2 T2m Anomaly  
Valid: 20220124 – 20220130



## 2m Temperature Week 2: Jan 24-30, 2022

Cooler than average surface air temperature will likely experience in most parts of the country except in Isabela & Baler during the forecast period.