



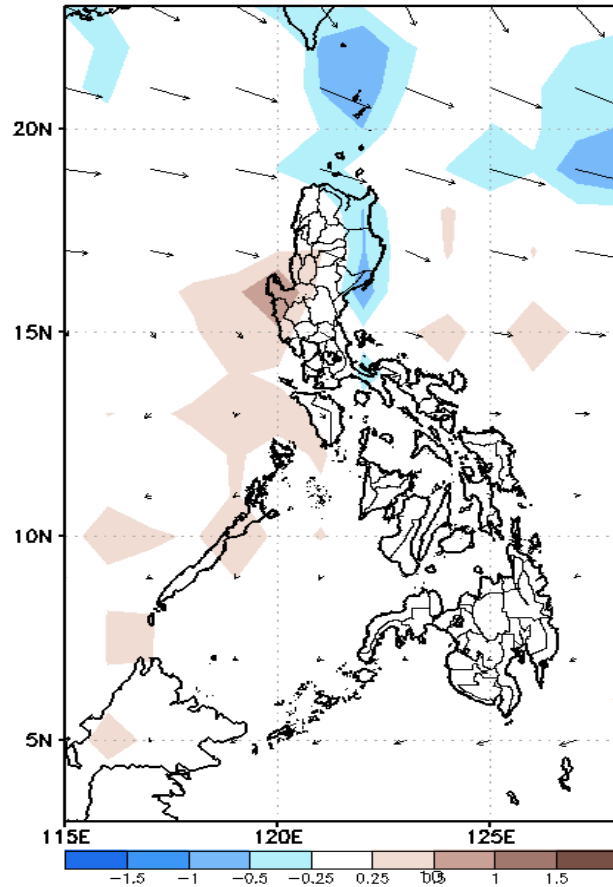
Week 1 & Week 2 Forecast for the Philippines using GEFS Model



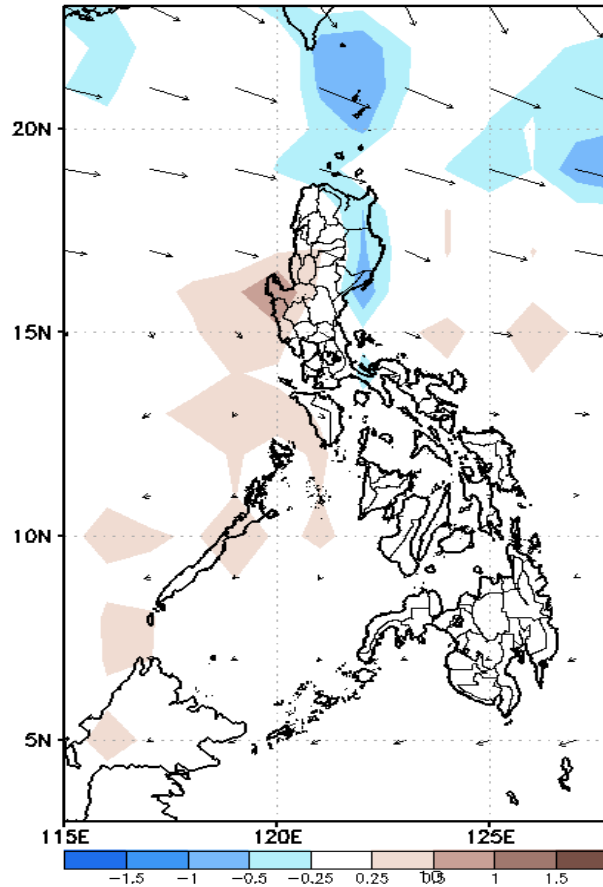
GEFS Week-1 Forecasts: Divergence & Wind Anomaly

Week 1: June 17-23, 2021

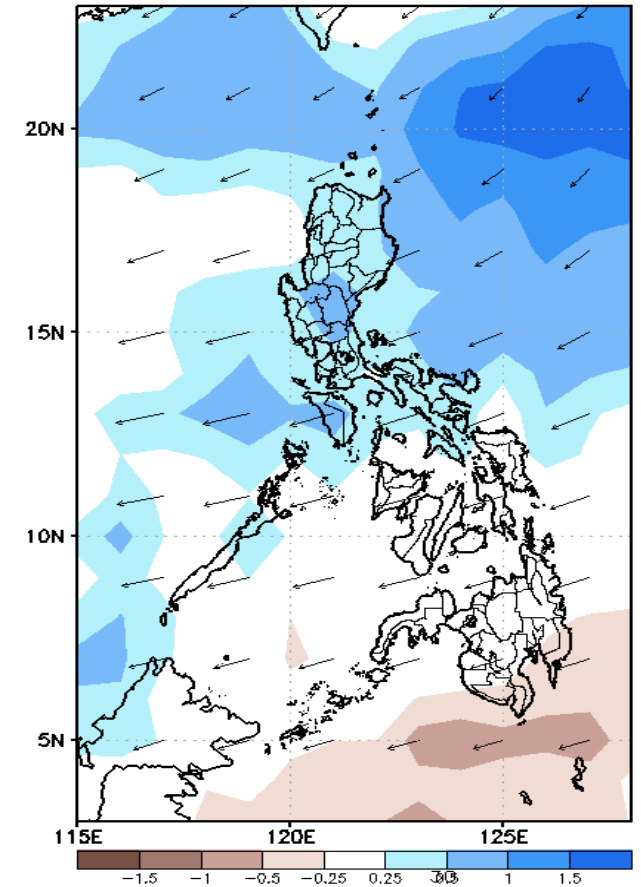
GEFS Week-1 850-hPa Divergence and Wind Anom
Valid: 20210617 - 20210623



GEFS Week-1 700-hPa Divergence and Wind Anom
Valid: 20210617 - 20210623



GEFS Week-1 200-hPa Divergence and Wind Anom
Valid: 20210617 - 20210623

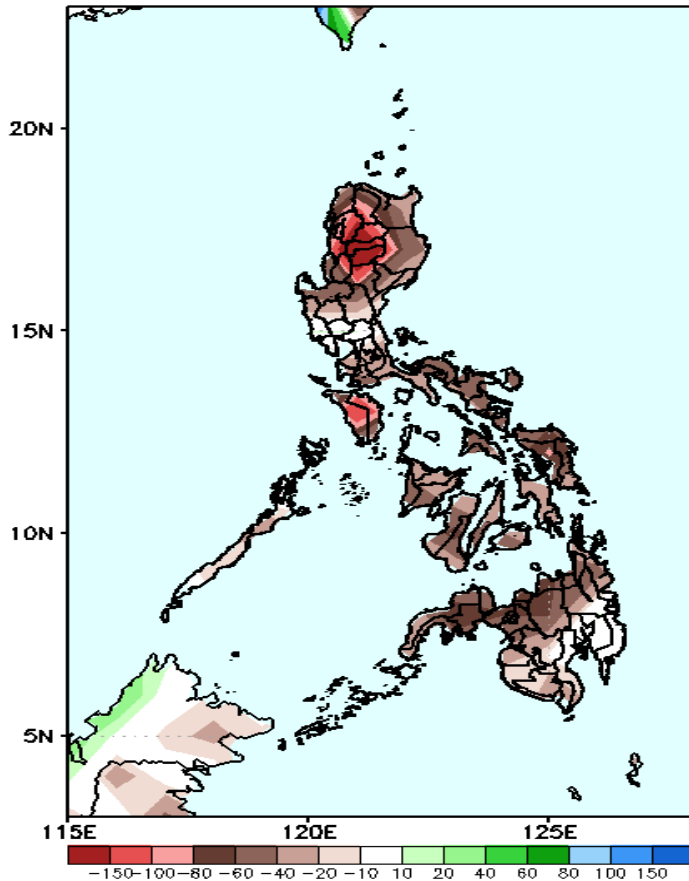


Upper and low level Divergence suggest likelihood of precipitation in most parts of Luzon. Southwest monsoon affecting Luzon while Easterlies affecting the rest of the country. Attributing to warmer temperature and higher heat index and humid environment (especially in the western section of the country) during the forecast period.

Precipitation Anomaly and Exceedance Probability > 25/50 mm

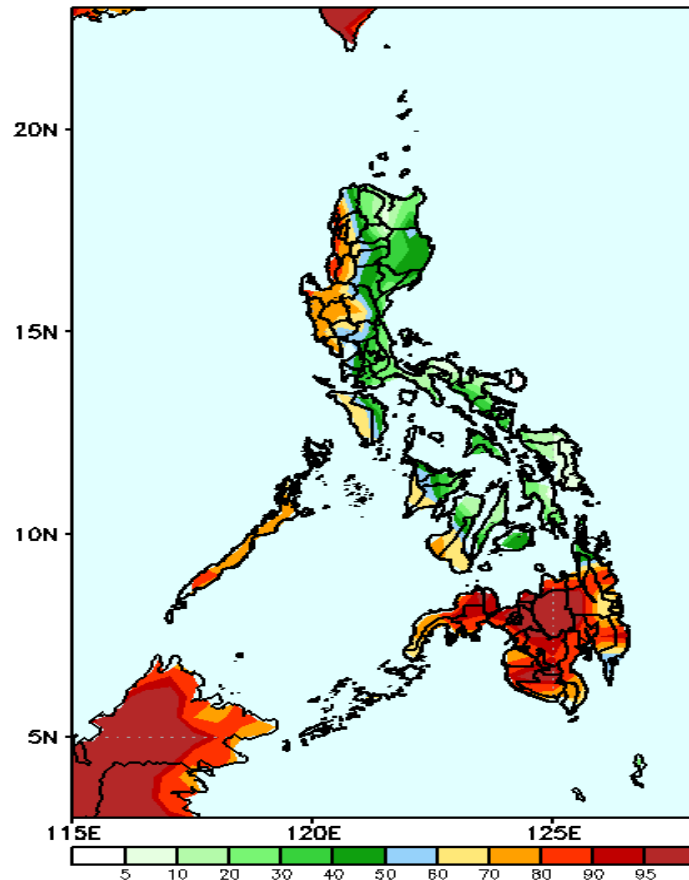
Week 1: June 17-23, 2021

GEFS Week-1 Precip Anomaly
Valid: 20210617 - 20210623



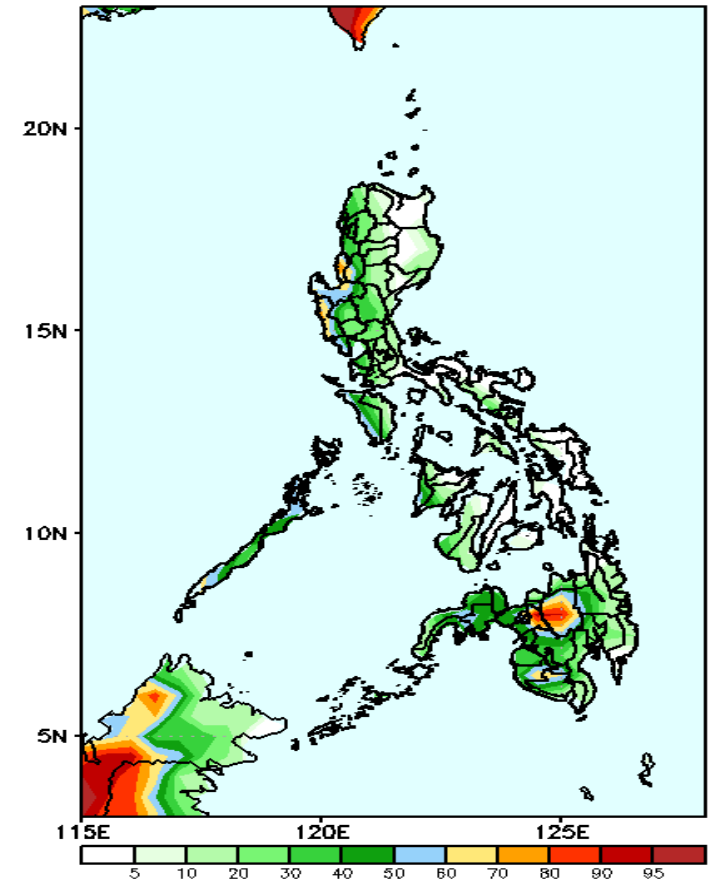
Rainfall deficit of up to 150mm is expected in Cordillera Region and Mindoro and 40-80mm for the rest of the country during the forecast period.

GEFS Week-1 Exceedance Prob. > 25mm
Valid: 20210617 - 20210623



High probability of rainfall to exceed 25mm in western parts of Luzon & Visayas and most parts of Mindanao during the forecast period.

GEFS Week-1 Exceedance Prob. > 50mm
Valid: 20210617 - 20210623

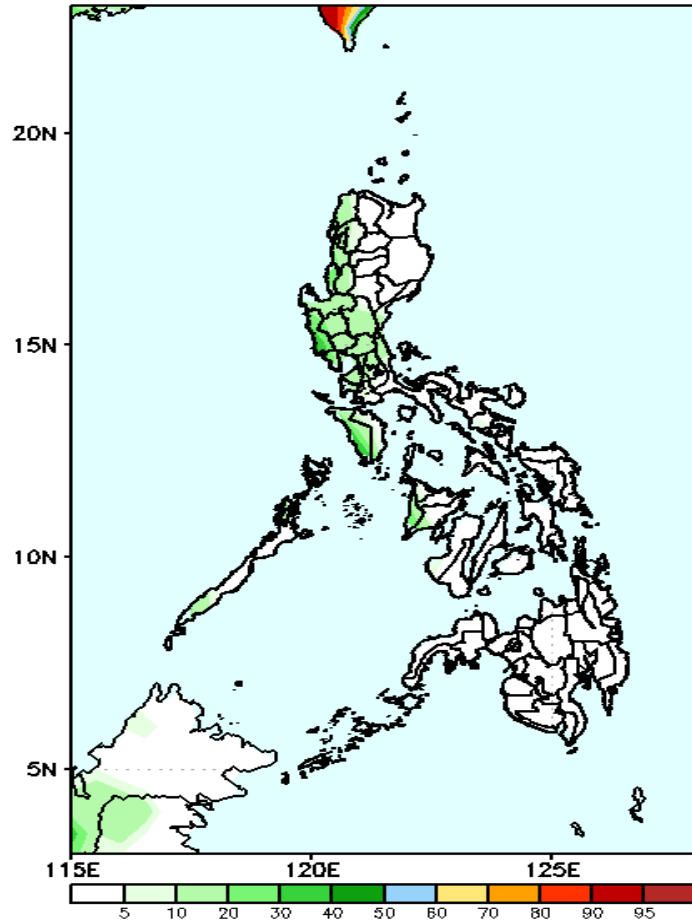


60-95% probability of rainfall to exceed 50mm in Zambales, Pangasinan, La Union, Bukidnon and Lanao del Sur while less likely for the rest of the country during the forecast period.

Exceedance Probability > 100/150/200 mm

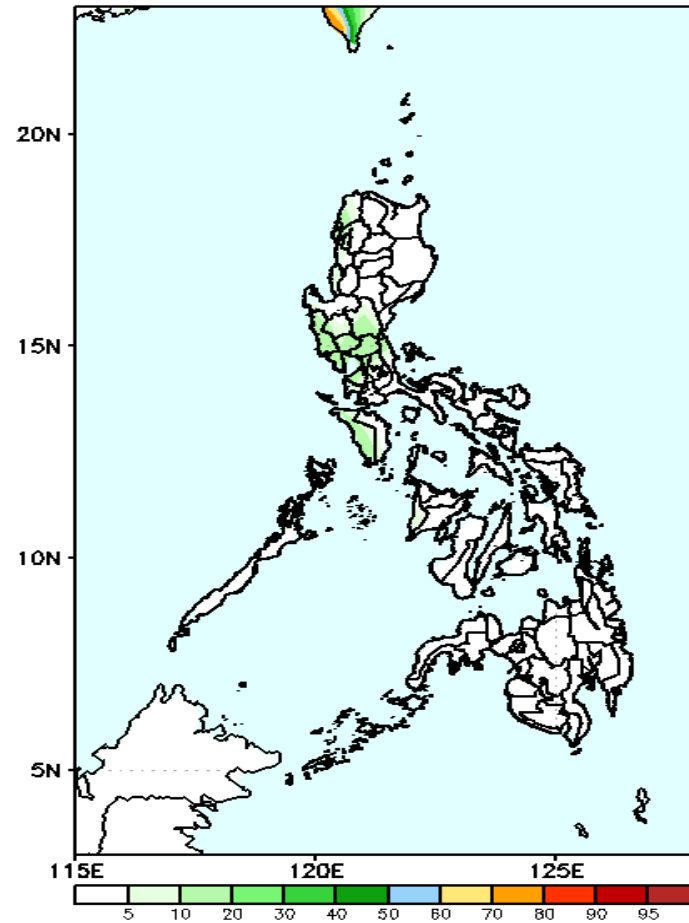
Week 1: June 17-23, 2021

GEFS Week-1 Exceedance Prob. > 100mm
Valid: 20210617 - 20210623



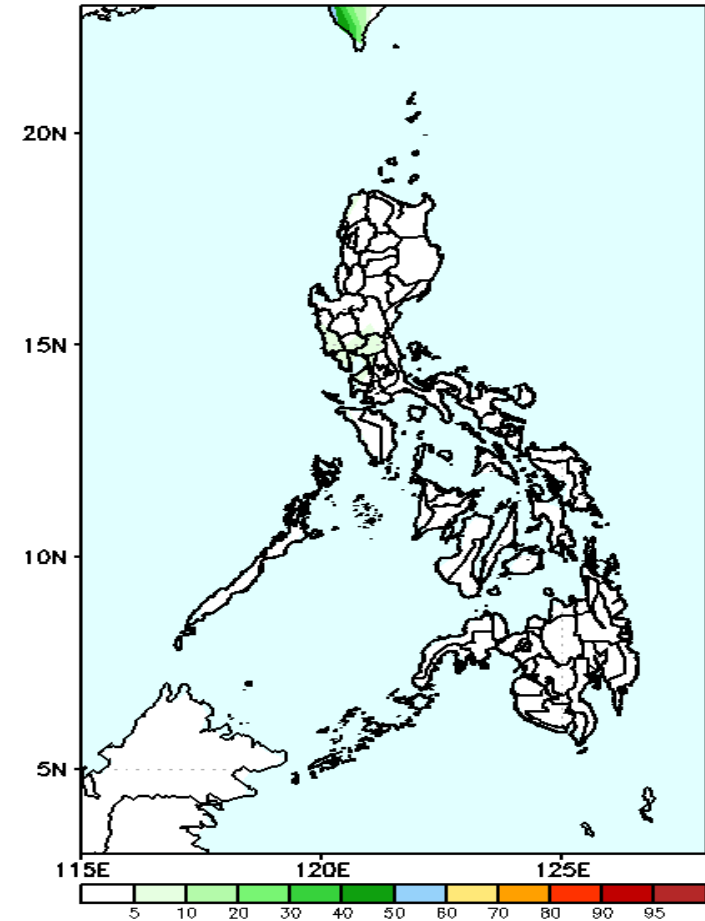
Less probability of rainfall to exceed 100mm in most parts of the country during the forecast period.

GEFS Week-1 Exceedance Prob. > 150mm
Valid: 20210617 - 20210623



Less probability of rainfall to exceed 150mm in most parts of the country during the forecast period.

GEFS Week-1 Exceedance Prob. > 200mm
Valid: 20210617 - 20210623



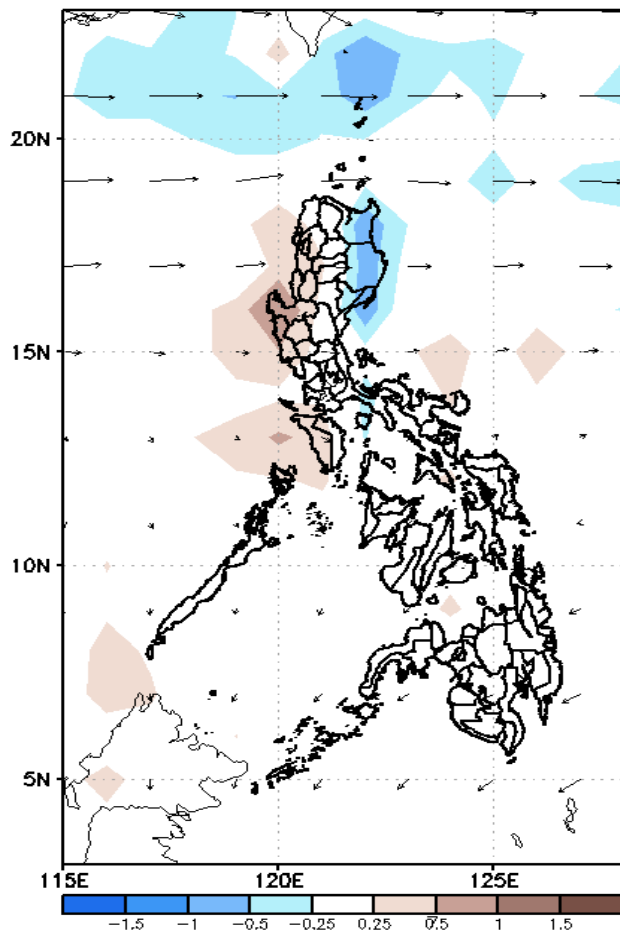
Less probability of rainfall to exceed 200mm in most parts of the country during the forecast period.



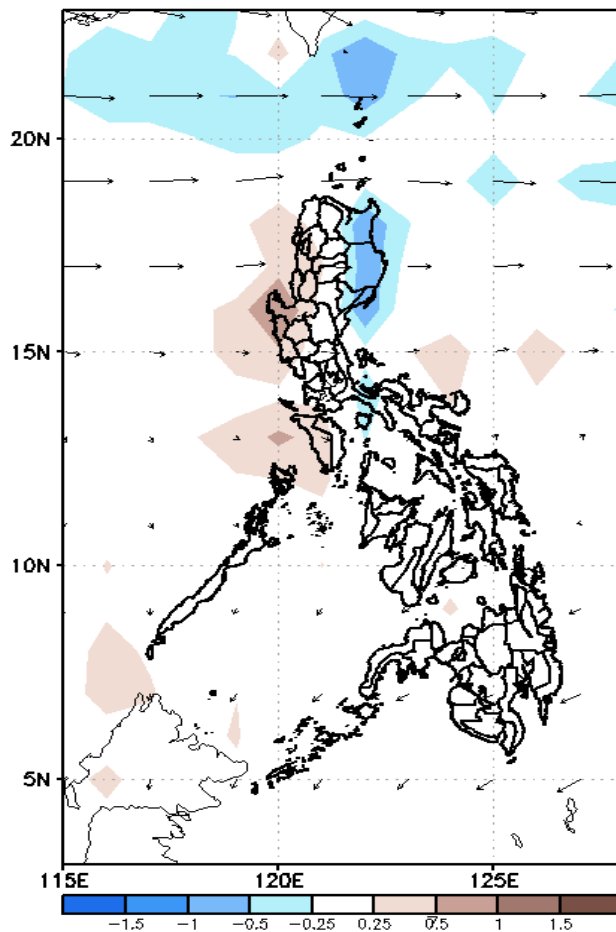
GEFS Week-2 Forecasts: Divergence & Wind Anomaly

Week 2: June June 24-30, 2021

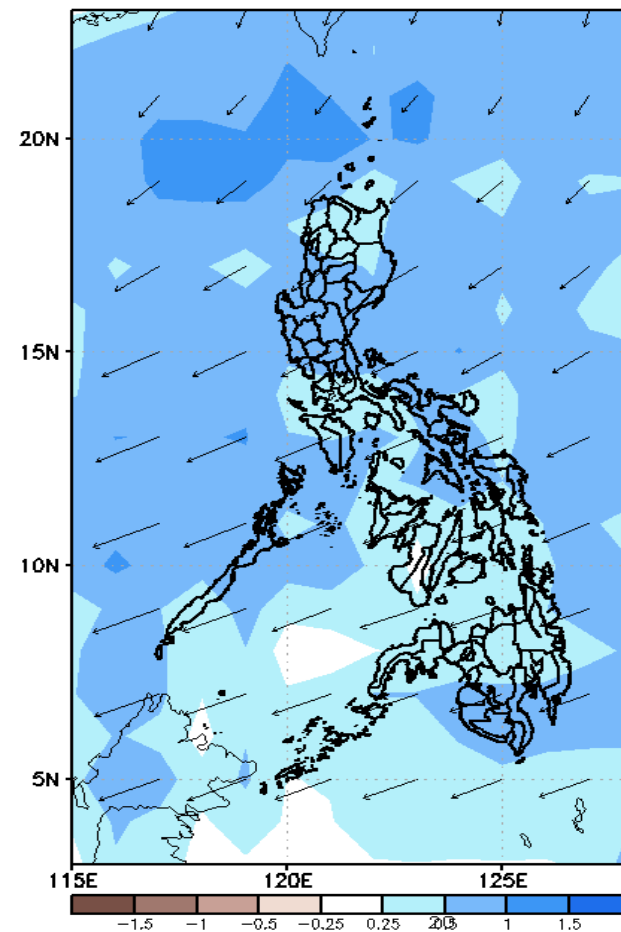
GEFS Week-2 850-hPa Divergence and Wind Anom
Valid: 20210624 - 20210630



GEFS Week-2 700-hPa Divergence and Wind Anom
Valid: 20210624 - 20210630



GEFS week-2 200-hPa Divergence and Wind Anom
Valid: 20210624 - 20210630

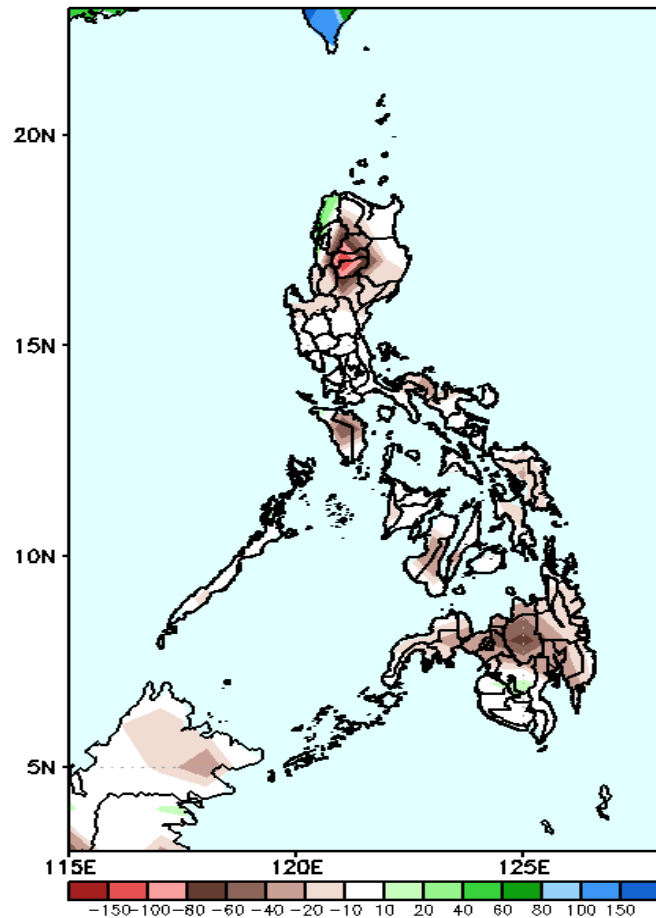


Upper and low level Divergence suggest likelihood of precipitation in most parts of the country. Southwest monsoon affecting the western sections of the country while Easterlies affecting the rest. Attributing to warmer temperature and higher heat index and humid environment (especially in the western section of the country) during the forecast period.

Precipitation Anomaly and Exceedance Probability > 25/50 mm

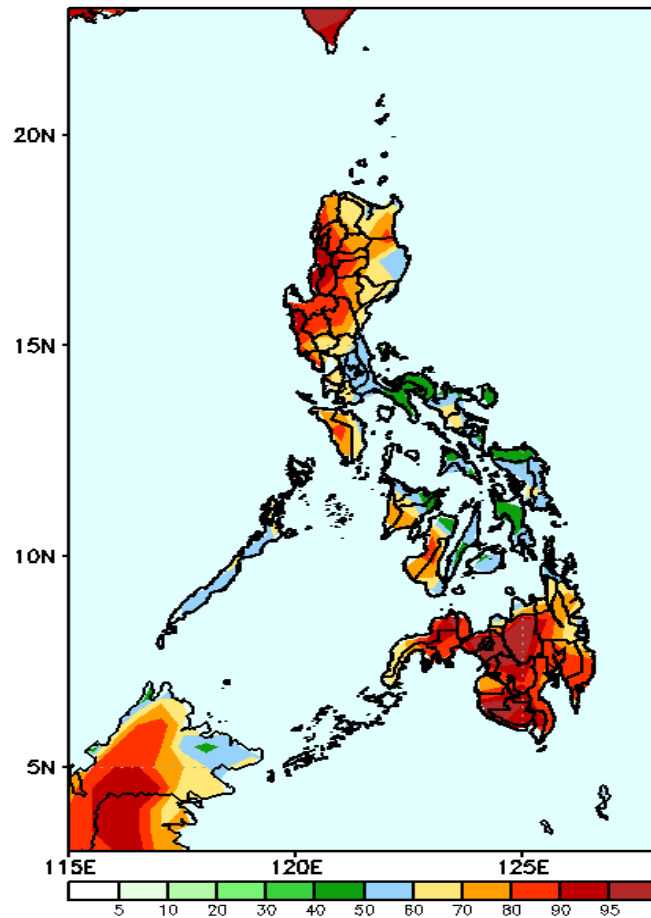
Week 2: June 24-30, 2021

GEFS Week-2 Precip Anomaly
Valid: 20210624 - 20210630



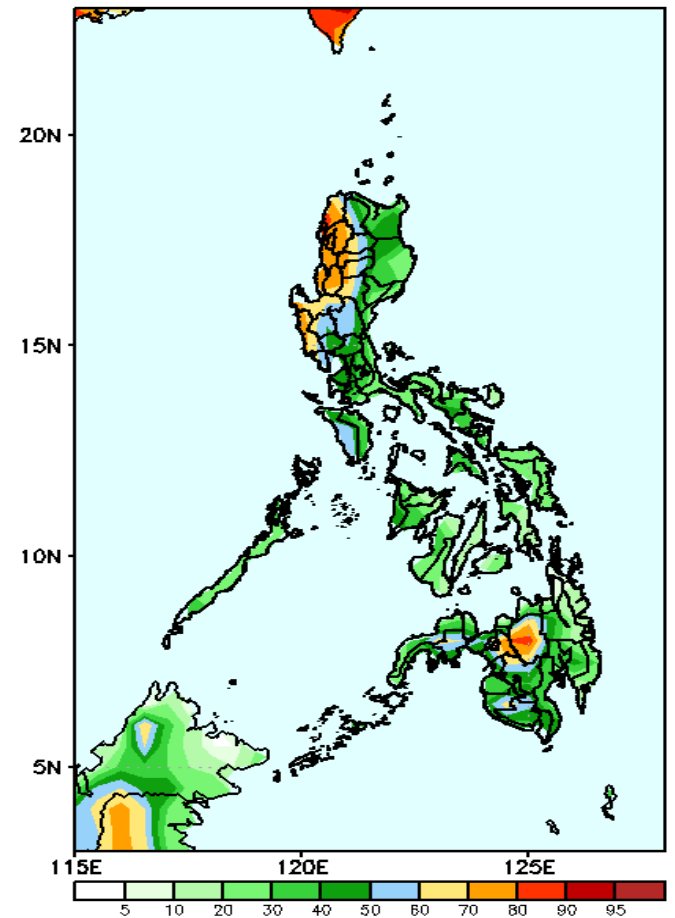
Rainfall deficit of 40-100mm is expected in most parts of the country (specially in Cordillera Region) during the forecast period.

GEFS Week-2 Exceedance Prob. > 25mm
Valid: 20210624 - 20210630



High probability of rainfall to exceed 25mm in most parts of Luzon & Mindanao and western Visayas while less likely for the rest of Visayas during the forecast period.

GEFS Week-2 Exceedance Prob. > 50mm
Valid: 20210624 - 20210630

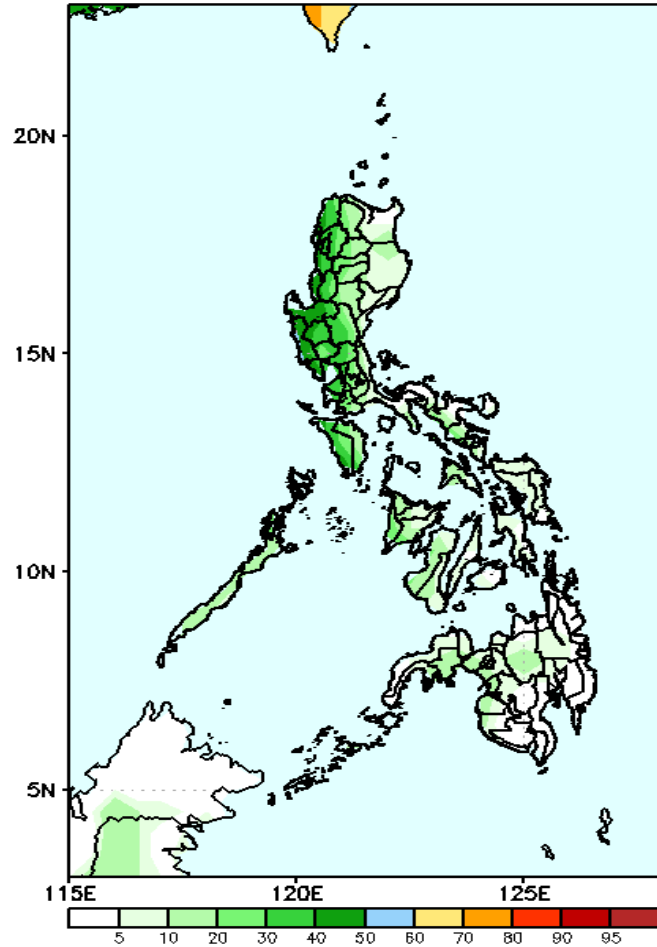


50-90% probability of rainfall to exceed 50mm in Western and Central Luzon, Bukidnon and Lanao del Sur while less likely for rest of the country during the forecast period.

Exceedance Probability > 100/150/200 mm

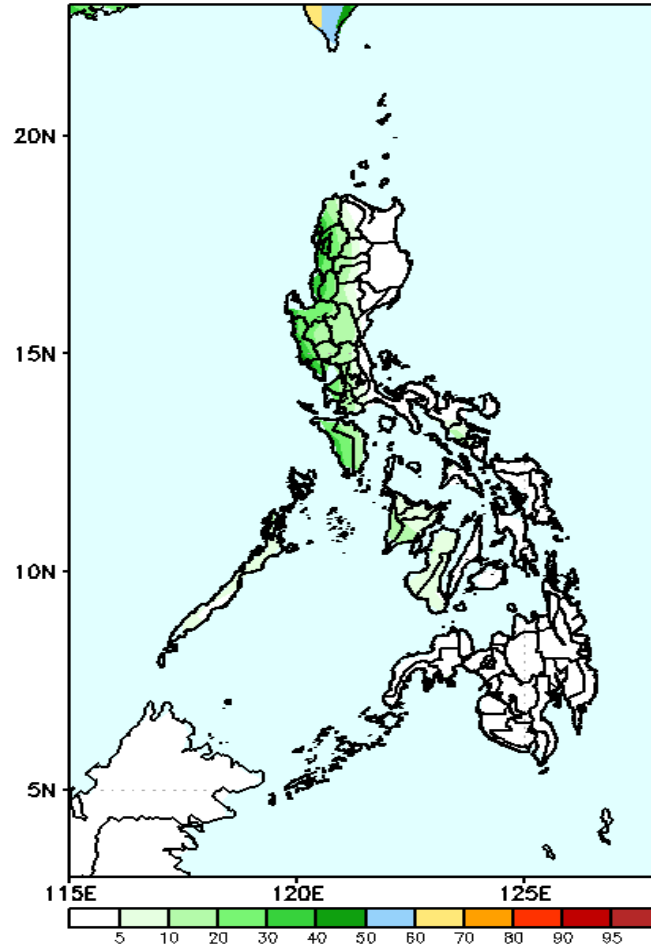
Week 2: June 24-30, 2021

GEFS Week-2 Exceedance Prob. > 100mm
Valid: 20210624 - 20210630



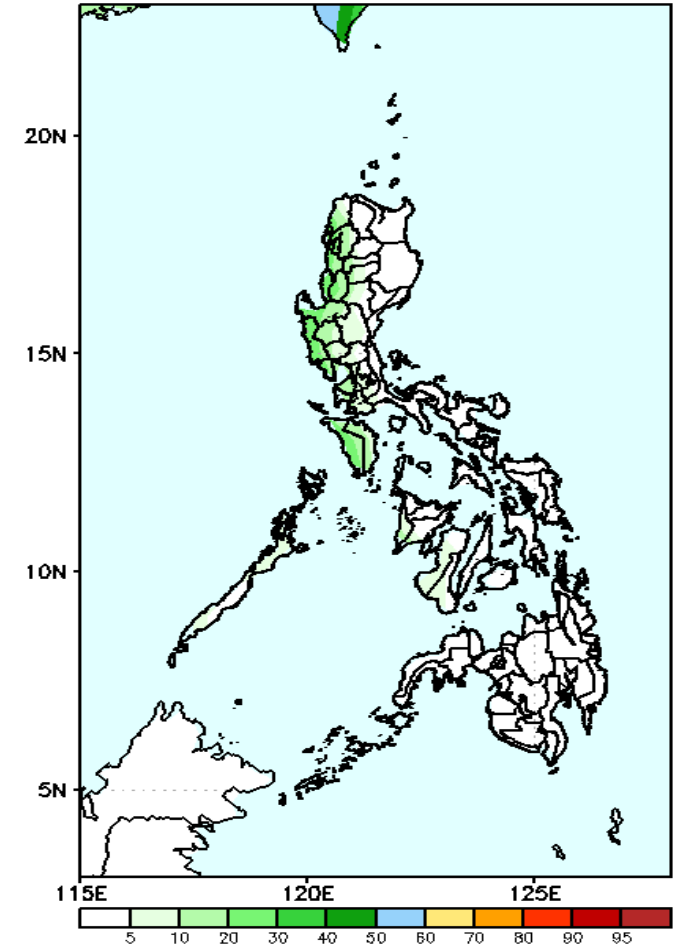
Less probability of rainfall to exceed 100mm in most parts of the country during the forecast period.

GEFS Week-2 Exceedance Prob. > 150mm
Valid: 20210624 - 20210630



Less probability of rainfall to exceed 150mm in most parts of the country during the forecast period.

GEFS Week-2 Exceedance Prob. > 200mm
Valid: 20210624 - 20210630

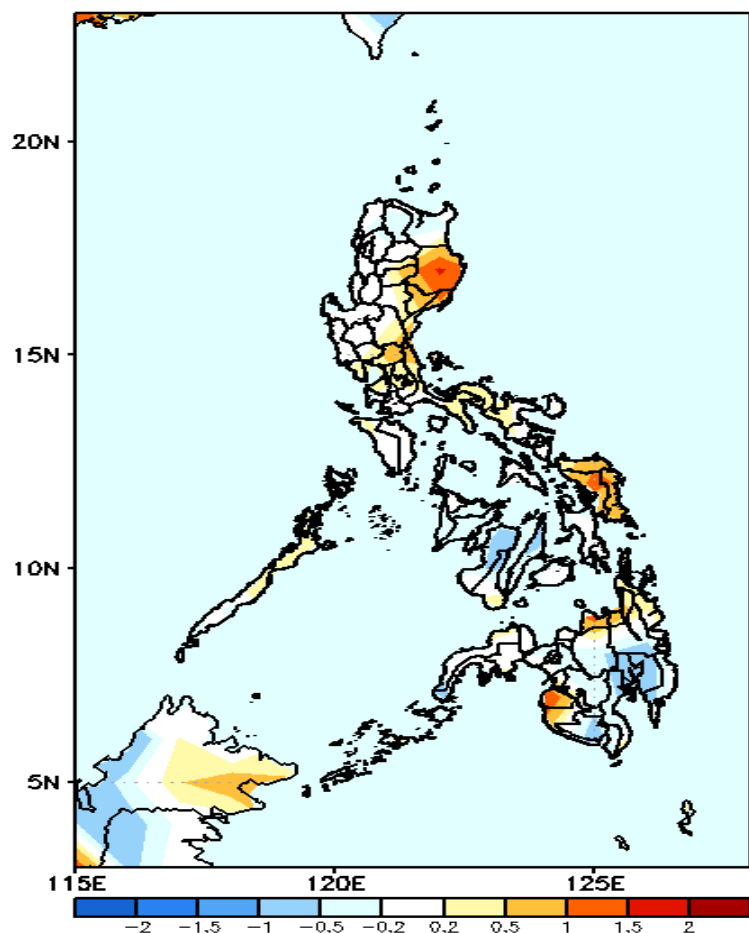


Less probability of rainfall to exceed 200mm in most parts of the country during the forecast period.



GEFS Week-1 & 2 Forecasts: T2m Anomaly

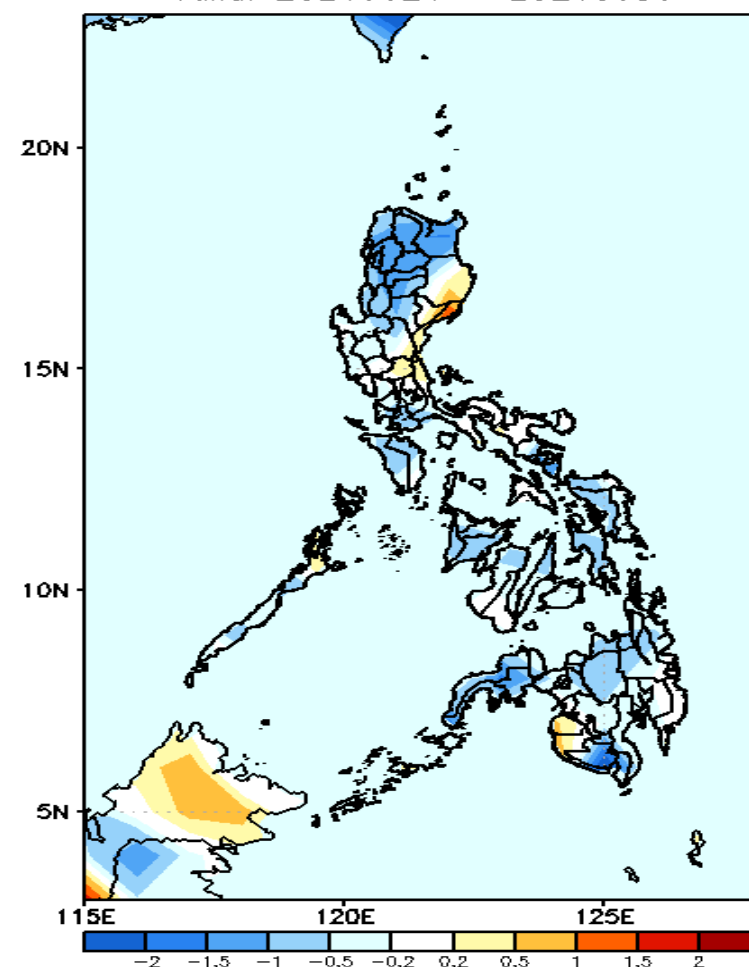
GEFS Week-1 T2m Anomaly
Valid: 20210617 - 20210623



2m Temperature Week 1: June 17-23, 2021

Slightly warmer to warmer than average surface air temperature will likely experience in most parts of Cagayan Valley, Eastern Visayas, Misamis Oriental, Sultan Kudarat and Maguindanao while average to slightly cooler for the rest of the country during the forecast period.

GEFS Week-2 T2m Anomaly
Valid: 20210624 - 20210630



2m Temperature Week 2: June 24-30, 2021

Slightly cooler to cooler than average surface air temperature will likely experience in most parts of the country except in eastern parts of Cagayan Valley, Maguindanao and Sultan Kudarat during the forecast period.