



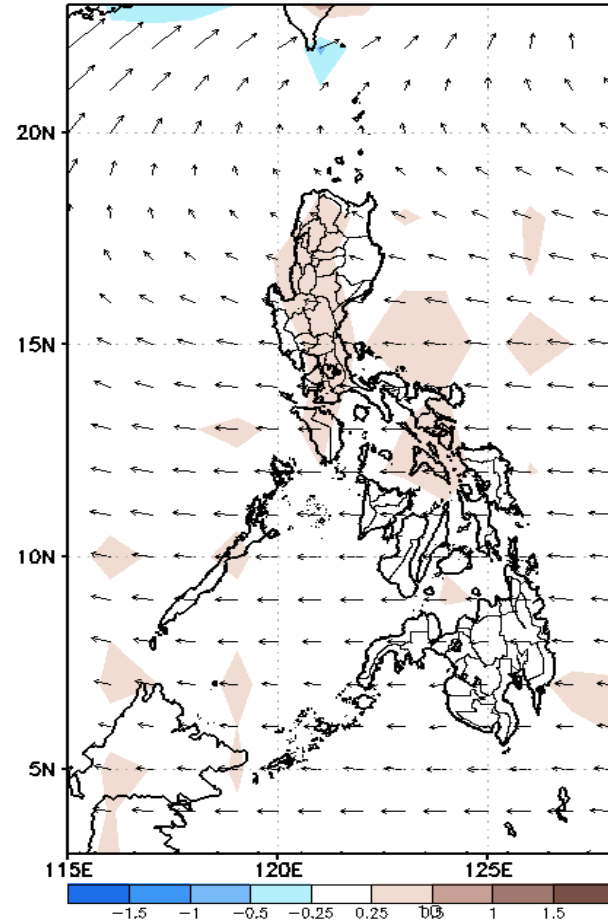
# Week 1 & Week 2 Forecast for the Philippines using GEFS Model



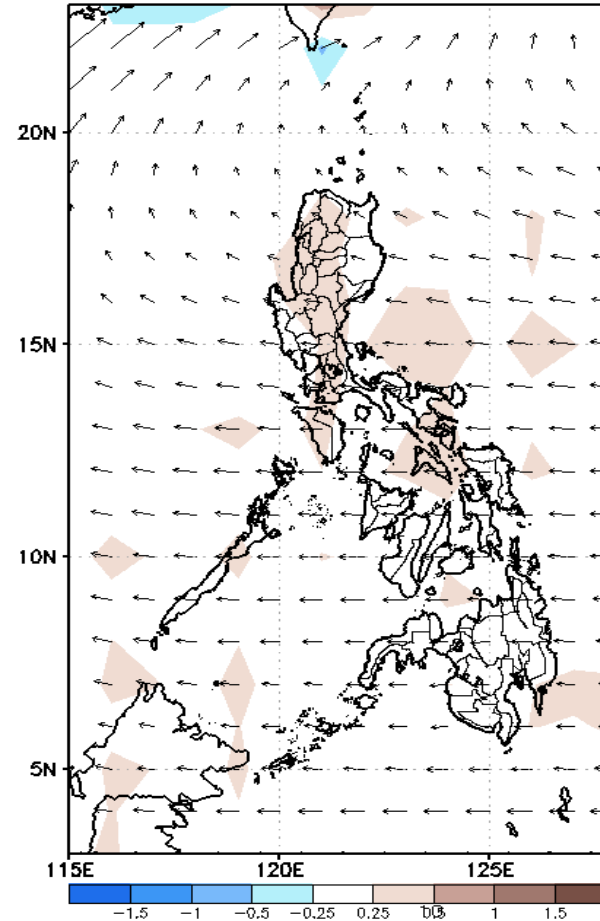
# GEFS Week-1 Forecasts: Wind Anomaly Forecast

Week 1 Jun 17-23, 2022

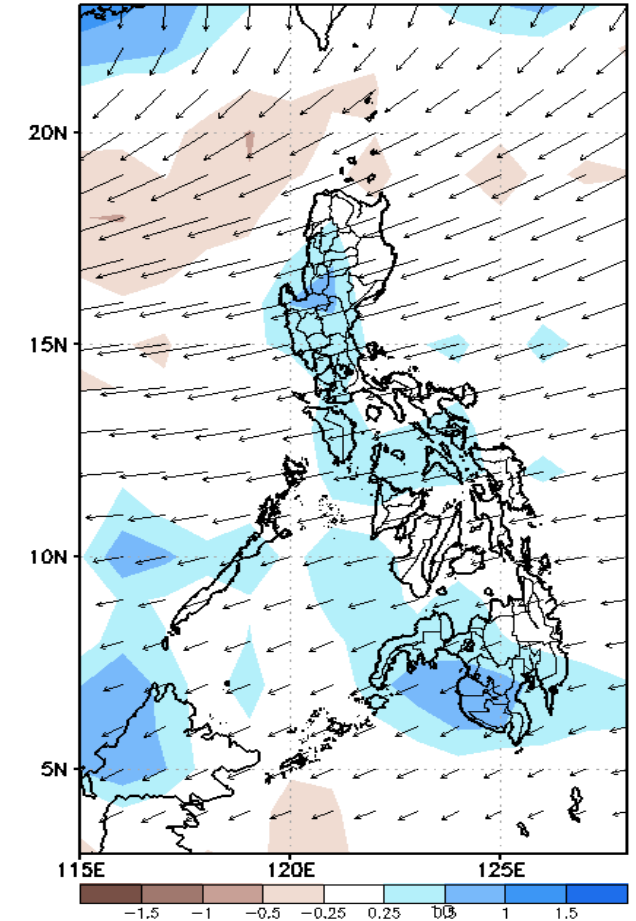
GEFS Week-1 850-hPa Divergence and Wind Anomc  
Valid: 20220617 - 20220623



GEFS Week-1 700-hPa Divergence and Wind Anom  
Valid: 20220617 - 20220623



GEFS Week-1 200-hPa Divergence and Wind Anom  
Valid: 20220617 - 20220623

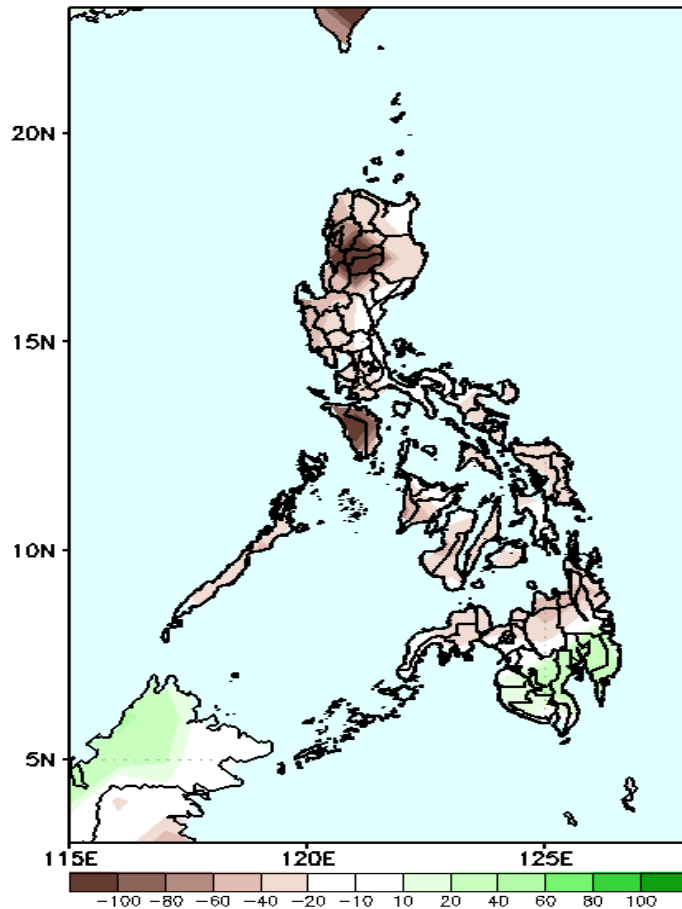


Easterlies affecting most parts of the country attributing to high likelihood of localized thunderstorms in most parts of the country during the forecast period

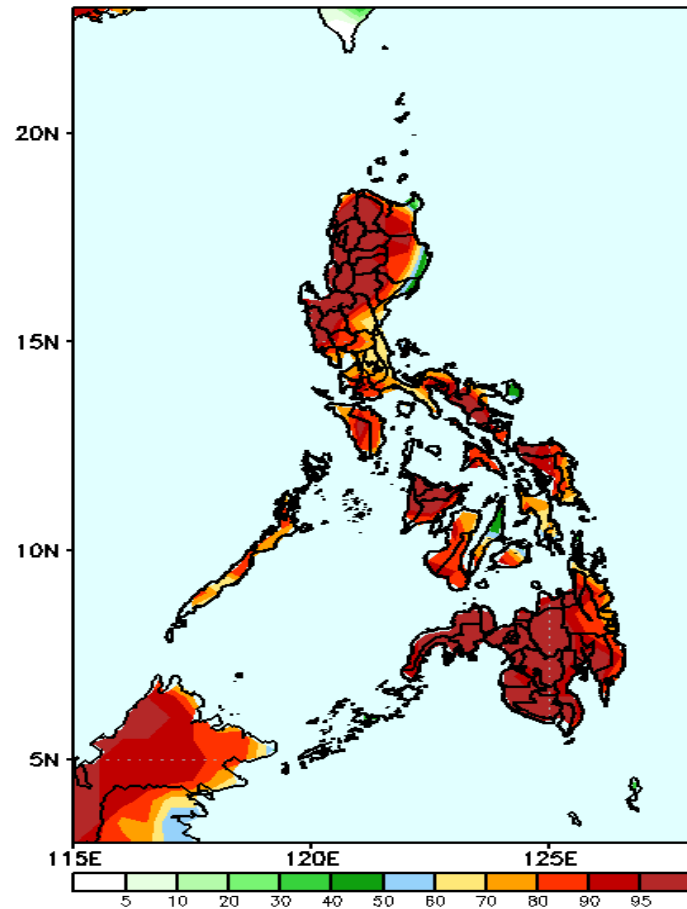
# Precipitation Anomaly and Exceedance Probability > 25/50 mm

Week 1: Jun 17-23, 2022

GEFS Week-1 Precip Anomaly  
Valid: 20220617 - 20220623

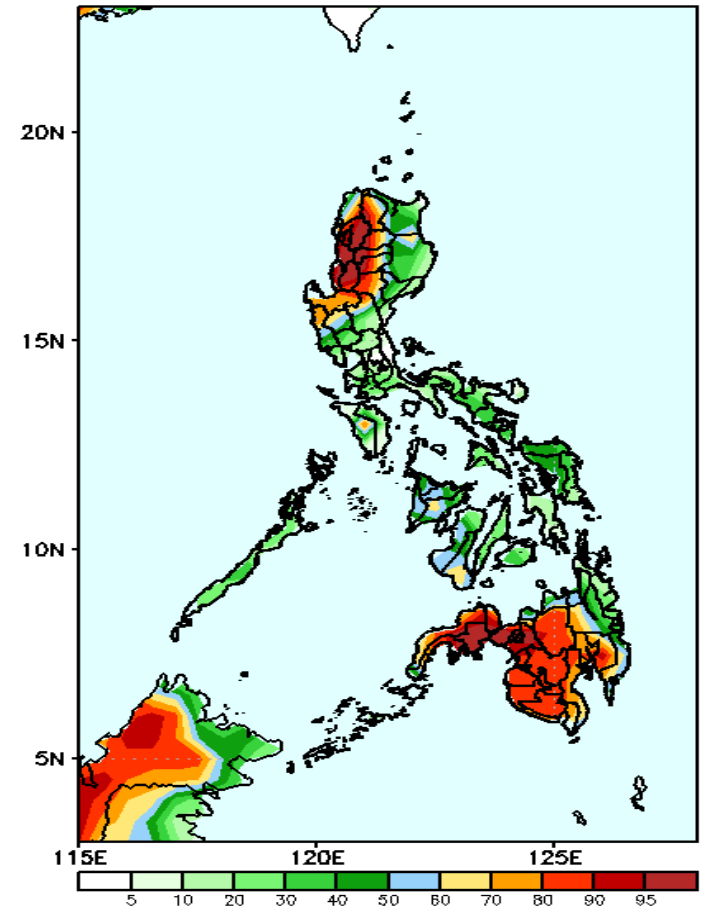


GEFS Week-1 Exceedance Prob. > 25mm  
Valid: 20220617 - 20220623



High probability of rainfall to exceed 25mm in most parts of the country during the forecast period.

GEFS Week-1 Exceedance Prob. > 50mm  
Valid: 20220617 - 20220623

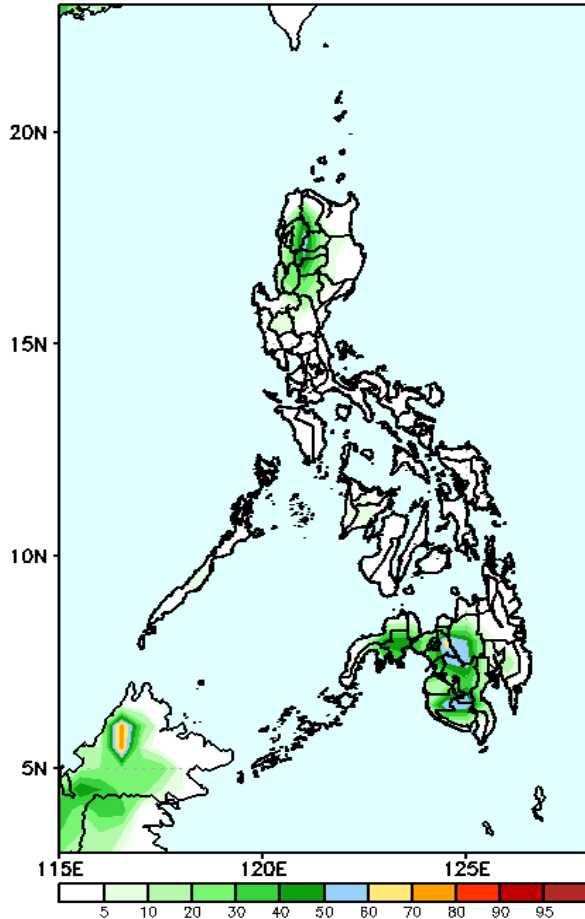


High probability of rainfall to exceed 50mm in most parts of Ilocos & Cordillera Region, Pangasinan, Zambales and most parts of Mindanao (except CARAGA Region) while less likely for the rest of the country during the forecast period.

# Exceedance Probability > 100/150/200 mm

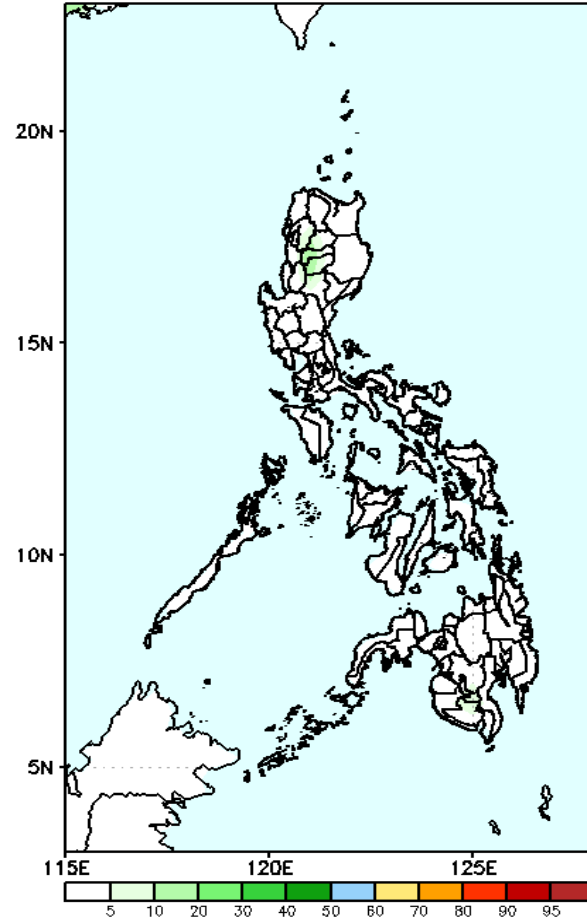
Week 1: Jun 17-23, 2022

GEFS Week-1 Exceedance Prob. > 100mm  
Valid: 20220617 - 20220623



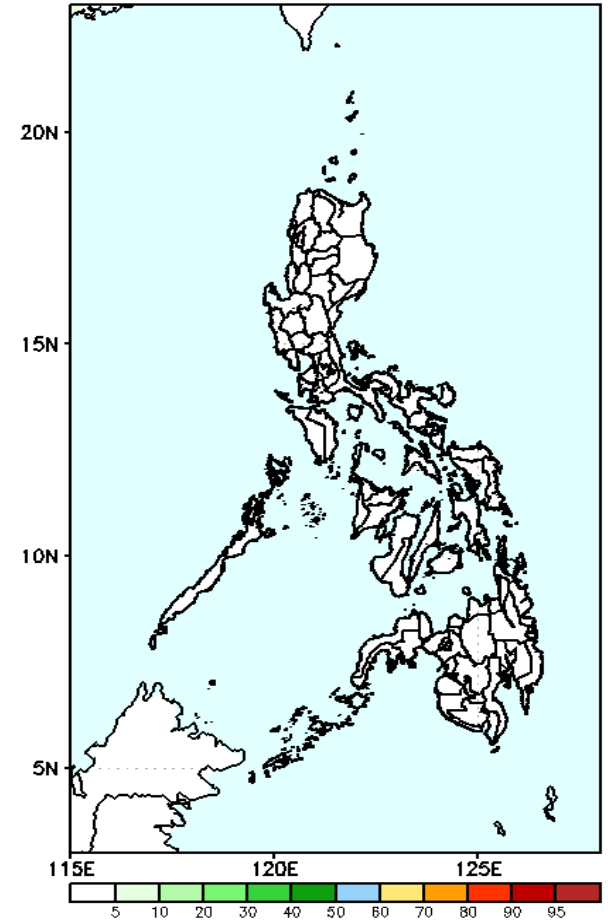
Low probability of rainfall to exceed 100mm in most parts of the country during the forecast period.

GEFS Week-1 Exceedance Prob. > 150mm  
Valid: 20220617 - 20220623



Low probability of rainfall to exceed 150mm in most parts of the country during the forecast period.

GEFS Week-1 Exceedance Prob. > 200mm  
Valid: 20220617 - 20220623



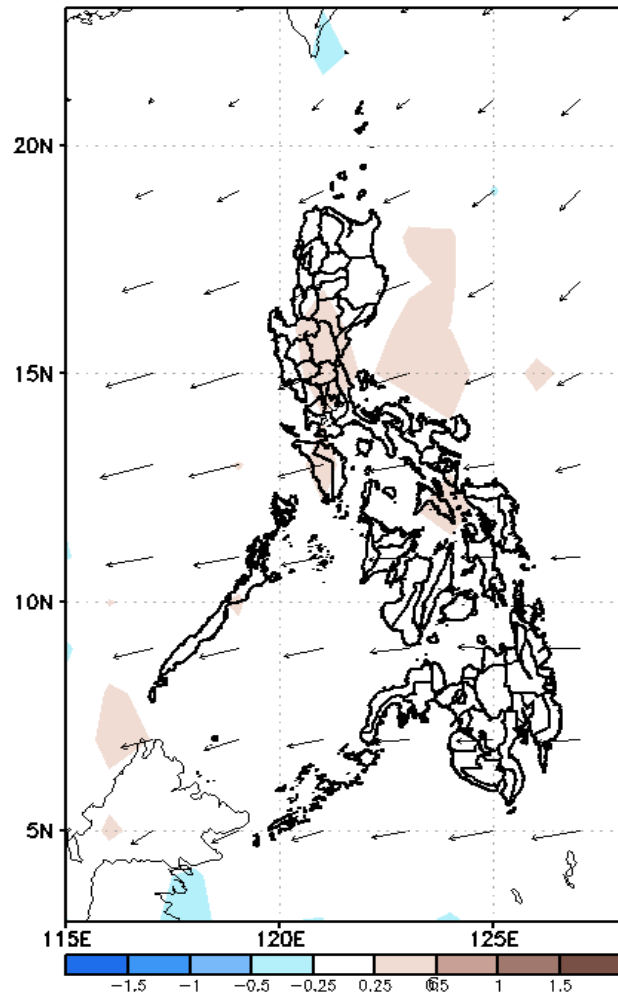
Low probability of rainfall to exceed 200mm in most parts of the country during the forecast period.



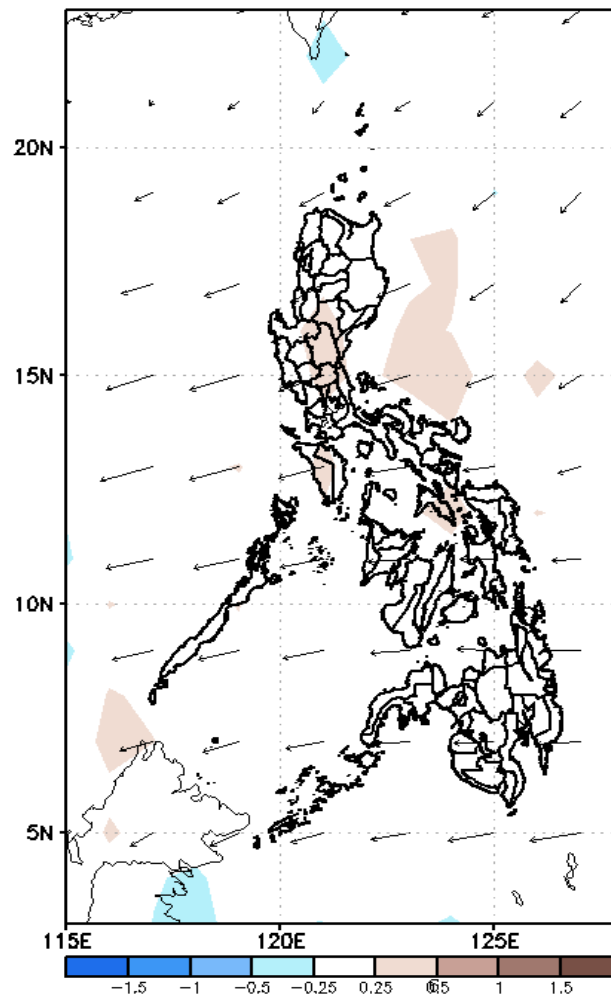
# GEFS Week-2 Forecasts: Wind Anomaly Forecast

Week 2: Jun 24-28, 2022

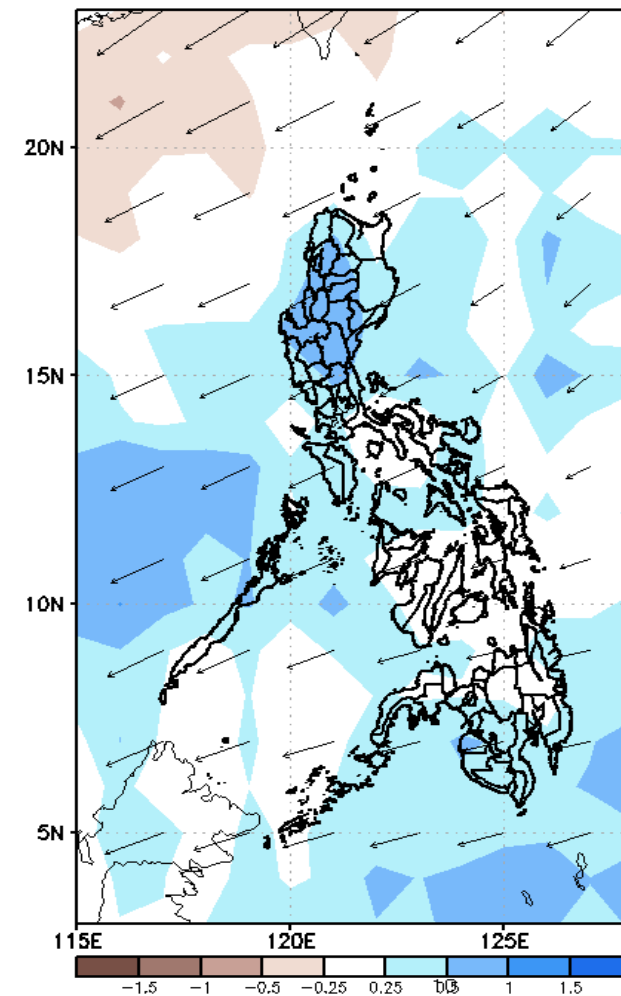
GEFS Week-2 850-hPa Divergence and Wind Anom  
Valid: 20220624 - 20220630



GEFS Week-2 700-hPa Divergence and Wind Anom  
Valid: 20220624 - 20220630



GEFS week-2 200-hPa Divergence and Wind Anom.  
Valid: 20220624 - 20220630

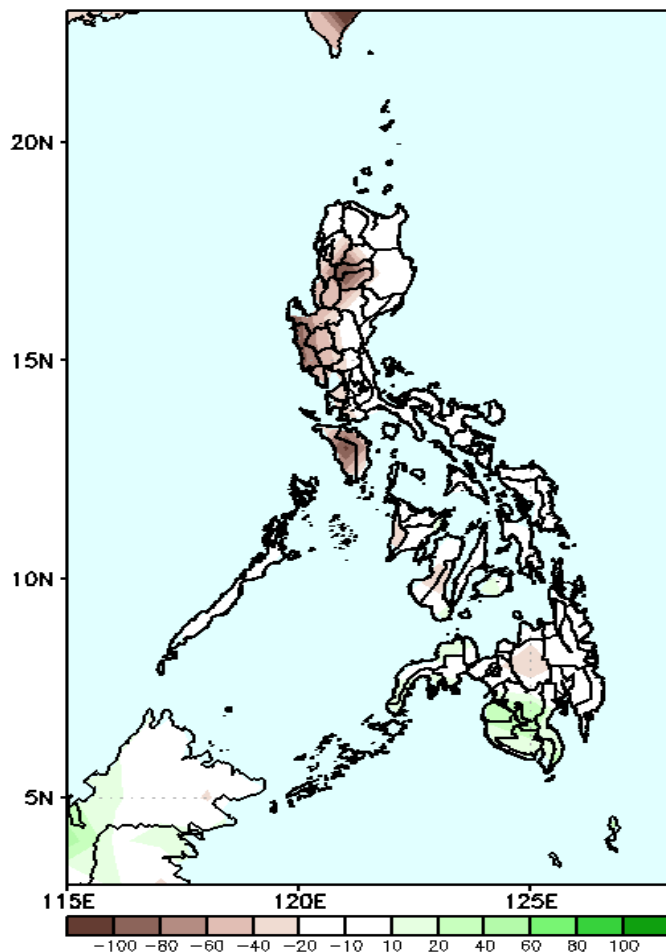


Easterlies affecting most parts of the country attributing to high likelihood of localized thunderstorms in most parts of the country during the forecast period

# Precipitation Anomaly and Exceedance Probability > 25/50 mm

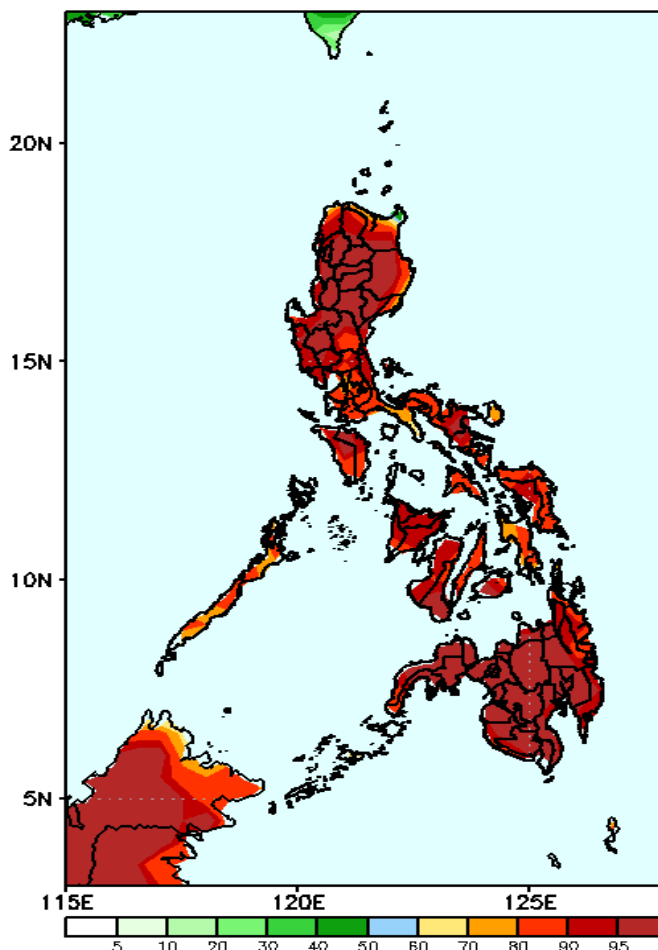
Week 2: Jun 24-30, 2022

GEFS Week-2 Precip Anomaly  
Valid: 20220624 - 20220630



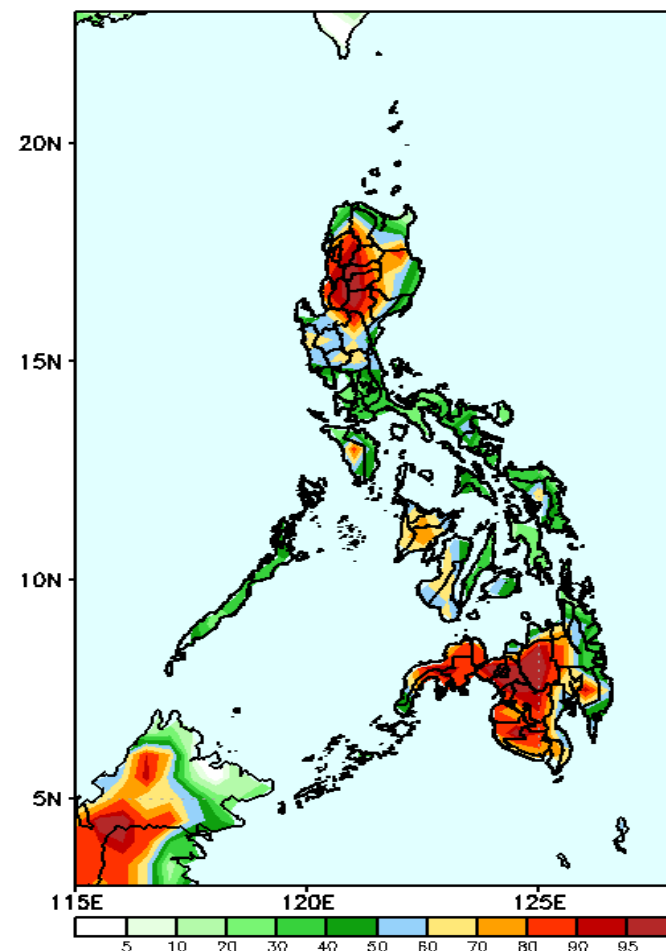
Rainfall deficit of 40-100mm is expected in most parts of Luzon while 20-40mm in southwestern Mindanao during the forecast period.

GEFS Week-2 Exceedance Prob. > 25mm  
Valid: 20220624 - 20220630



High probability of rainfall to exceed 25mm in most parts of the country during the forecast period.

GEFS Week-2 Exceedance Prob. > 50mm  
Valid: 20220624 - 20220630



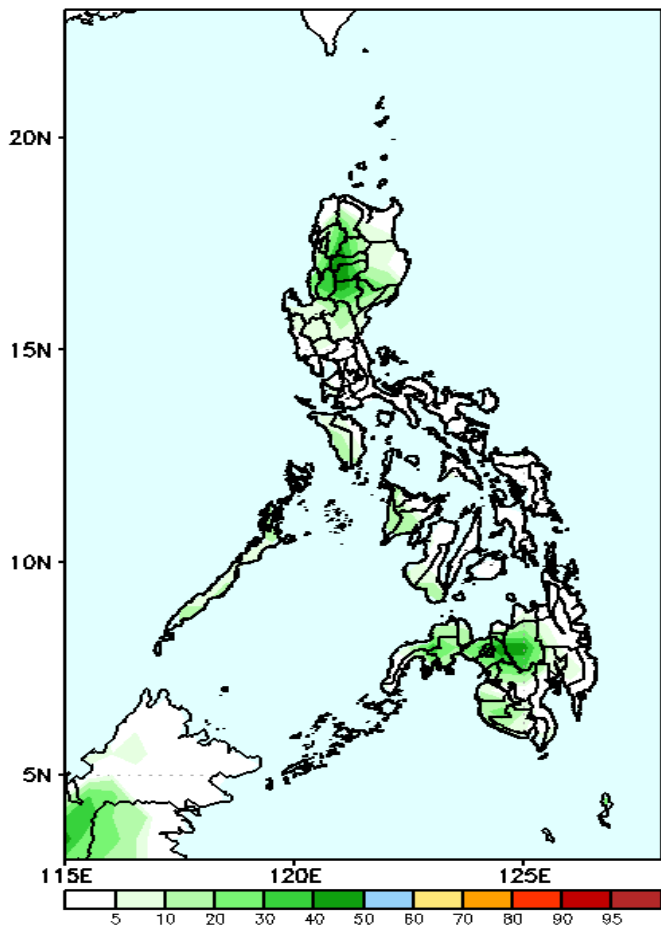
High probability of rainfall to exceed 50mm in most parts of Ilocos & Cordillera Region, parts of Cagayan Valley and Central Luzon, Occidental Mindoro, western Visayas and most parts of western and central Mindanao while less likely for the rest the country during the forecast period



# Exceedance Probability > 100/150/200 mm

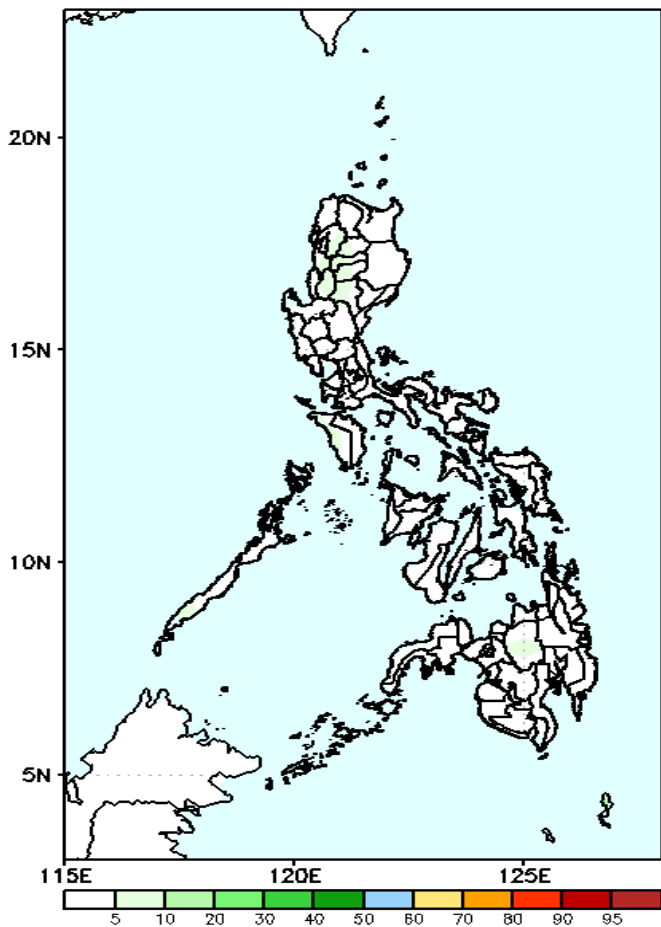
Week 2: Jun 24-30, 2022

GEFS Week-2 Exceedance Prob. > 100mm  
Valid: 20220624 – 20220630



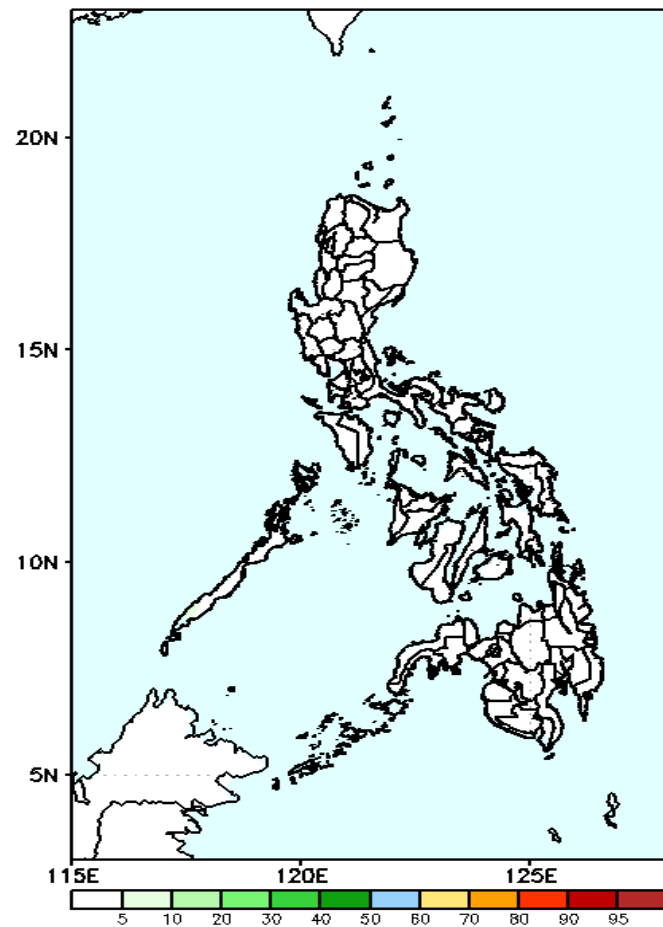
Low probability of rainfall to exceed 100mm in most parts of the country during the forecast period.

GEFS Week-2 Exceedance Prob. > 150mm  
Valid: 20220624 – 20220630



Low probability of rainfall to exceed 150mm in most parts of the country during the forecast period.

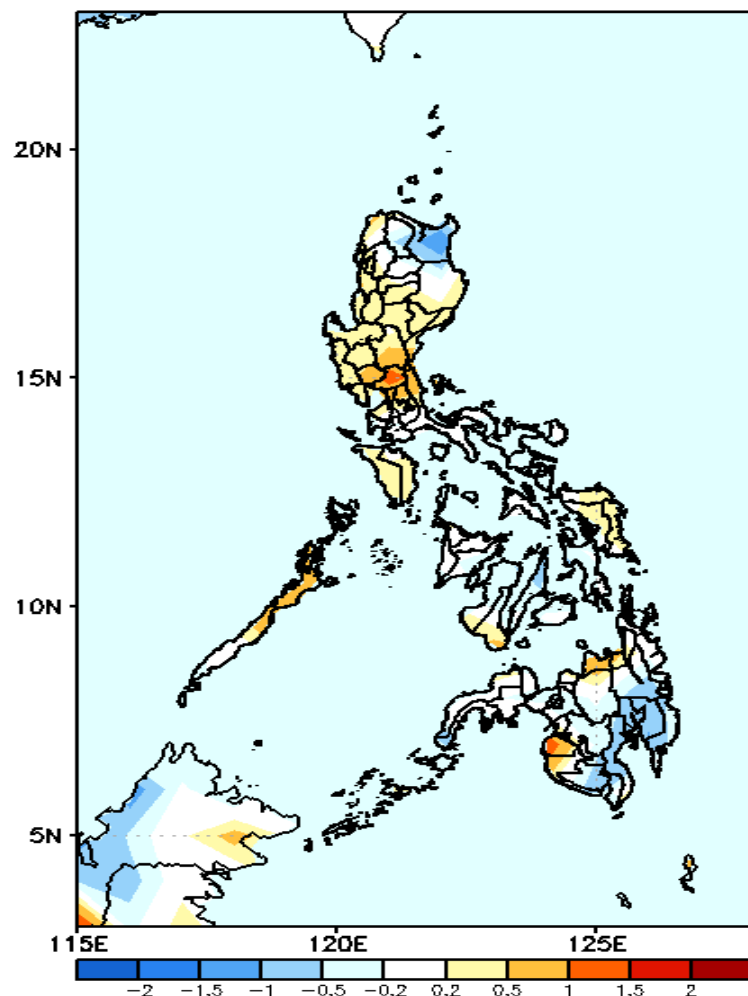
GEFS Week-2 Exceedance Prob. > 200mm  
Valid: 20220624 – 20220630



Low probability of rainfall to exceed 200mm in most parts of the country during the forecast period.

# GEFS Week-1 & 2 Forecasts: T2m Anomaly

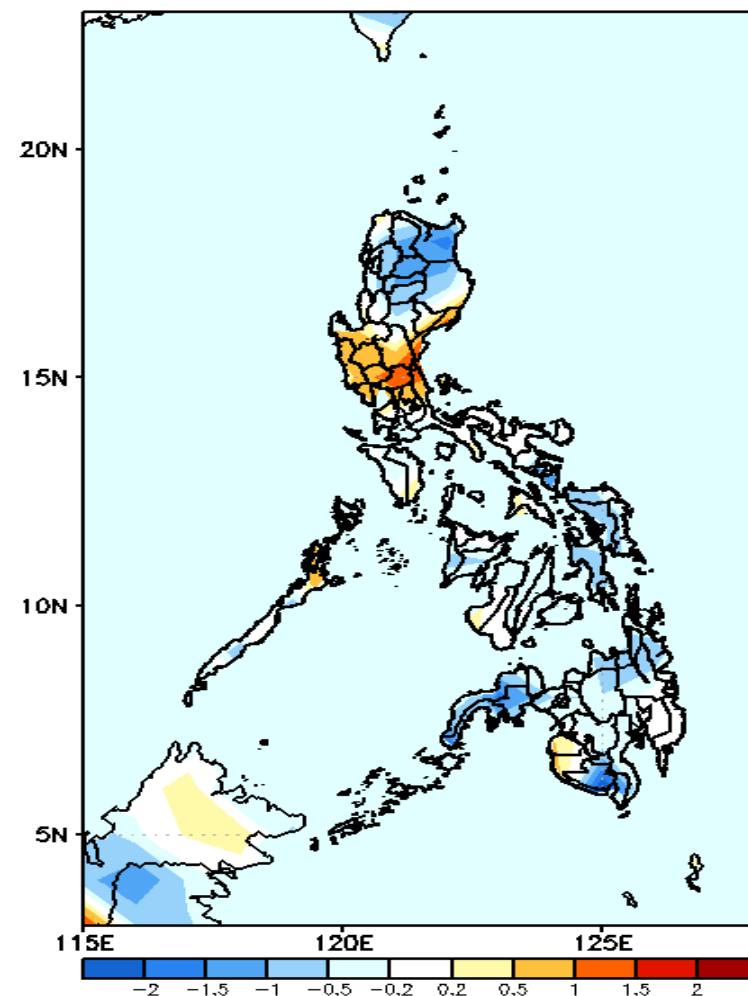
GEFS Week-1 T2m Anomaly  
Valid: 20220617 — 20220623



## 2m Temperature Week 1: Jun 17-23, 2022

Slightly cooler surface air temperature will likely experience in Apayao, northern Cebu and southern Mindanao while warmer temperature in Bulacan and average to slightly warmer temperature for the rest of the country during the forecast period.

GEFS Week-2 T2m Anomaly  
Valid: 20220624 — 20220630



## 2m Temperature Week 2: Jun 24-30, 2022

Slightly cooler to cooler surface air temperature will likely experience in most parts of Northern Luzon, Eastern Visayas, Zamboanga Peninsula, northern Mindanao and South Cotabato while warmer temperature in Central Luzon and average to slightly warmer temperature for the rest of the country during the forecast period.