



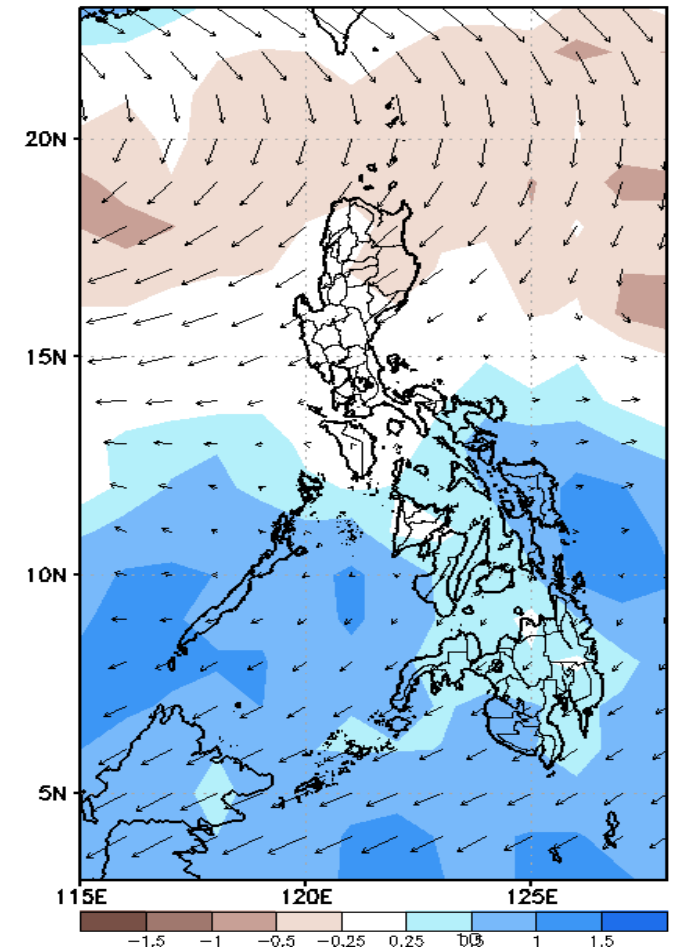
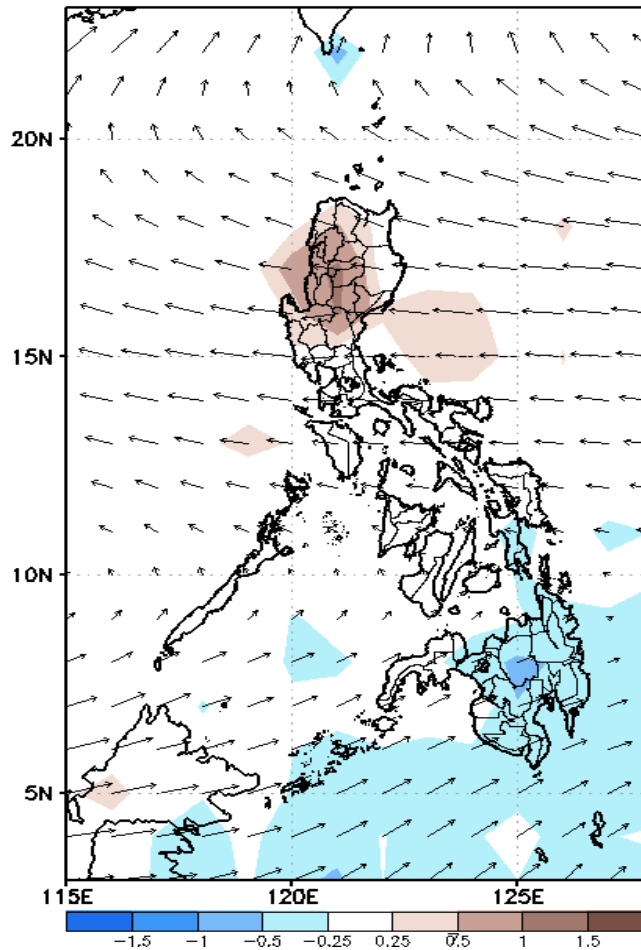
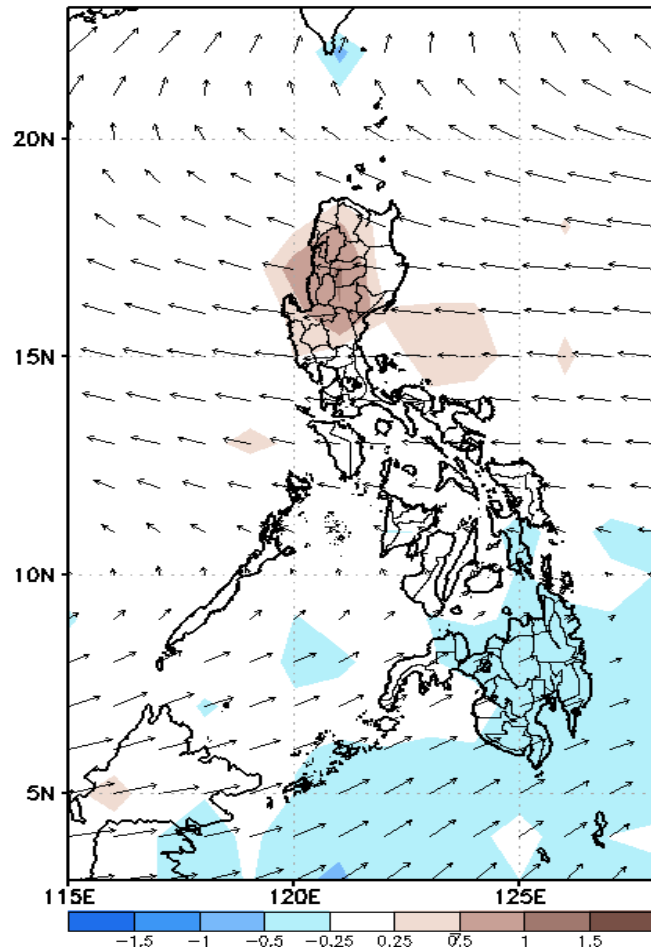
Week 1 & Week 2 Forecast for the Philippines using GEFS Model



GEFS Week-1 Forecasts: Divergence & Wind Anomaly

Week 1: May 17-23, 2021

GEFS Week-1 850-hPa Divergence and Wind Anom
Valid: 20210517 - 20210523

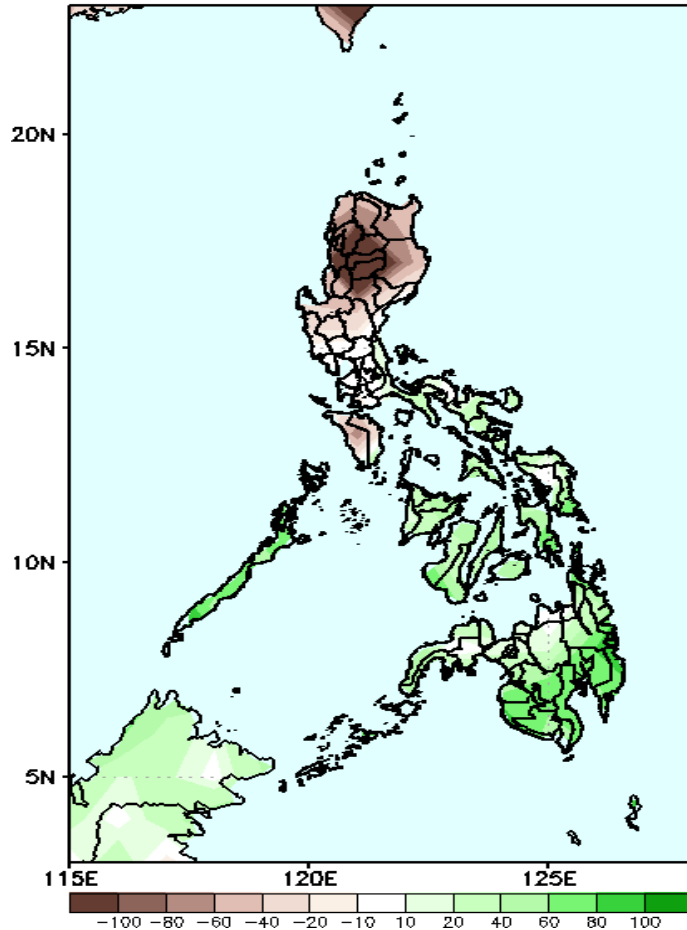


Upper and low level Divergence suggest likelihood of precipitation in most parts of Bicol region, Palawan, and most parts of Visayas and Mindanao. Southwest windflow affecting western Visayas and Mindanao. Easterlies affecting most parts of the country attributing to warmer temperatures and higher heat index during the forecast period.

Precipitation Anomaly and Exceedance Probability > 25/50 mm

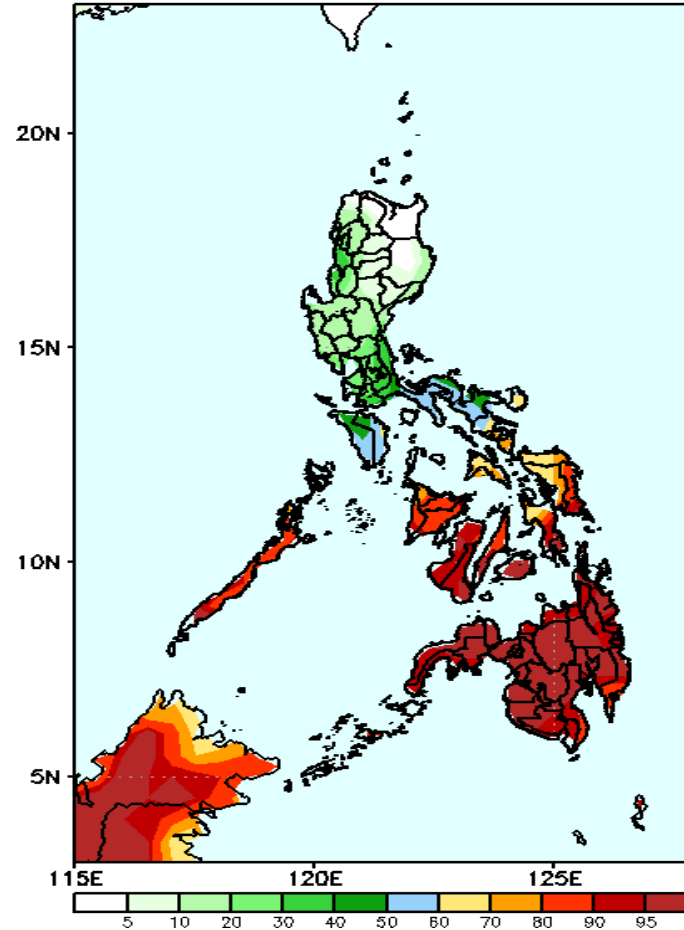
Week 1: May 17-23, 2021

GEFS Week-1 Precip Anomaly
Valid: 20210517 - 20210523



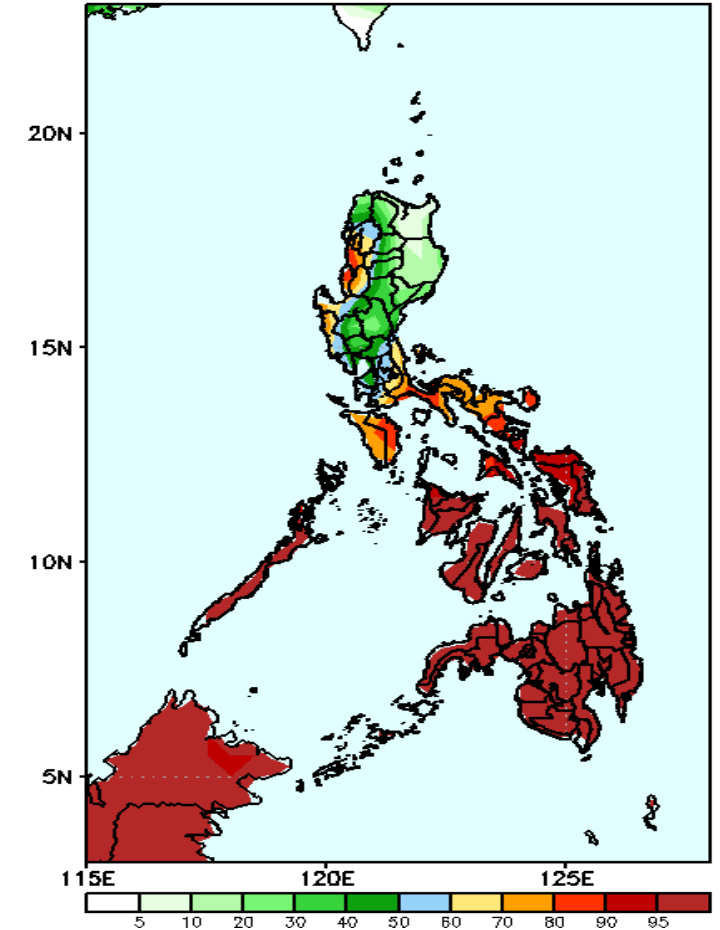
Rainfall deficit of 60-100mm is expected in most parts of Luzon specially in Cordillera & Ilocos Region while increase of rainfall of 40-100mm is more likely in Visayas and Mindanao during the forecast period.

GEFS Week-1 Exceedance Prob. > 50mm
Valid: 20210517 - 20210523



High probability of rainfall to exceed 25mm in some parts of western Luzon, Quezon, Bicol region, MIMAROPA and most parts of Visayas and Mindanao while less likely for the remaining parts of the country during the forecast period.

GEFS Week-1 Exceedance Prob. > 25mm
Valid: 20210517 - 20210523

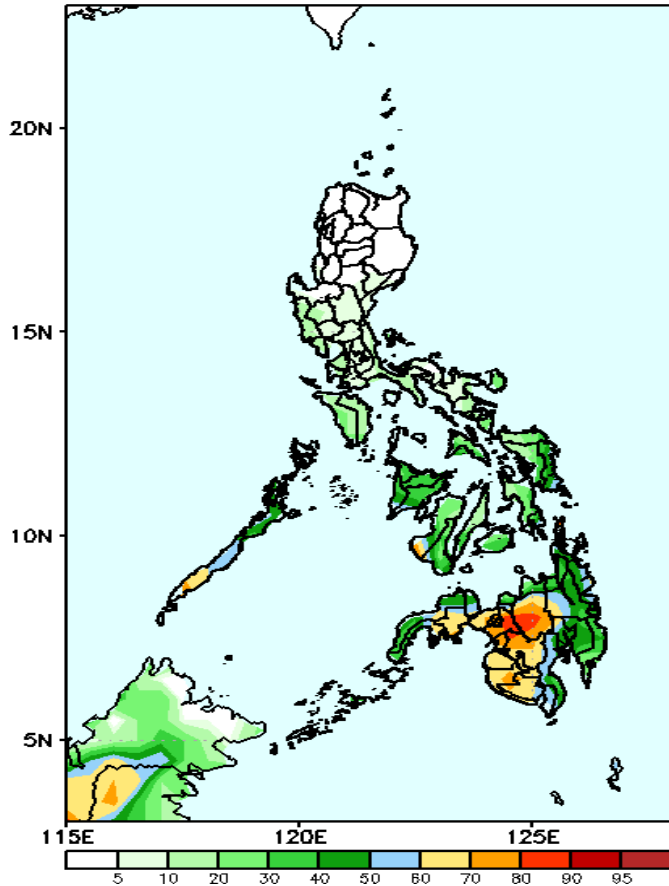


High probability of rainfall to exceed 50mm in some parts of Bicol region, Palawan and most parts of Visayas and Mindanao while less likely for the remaining parts of the country during the forecast period.

Exceedance Probability > 100/150/200 mm

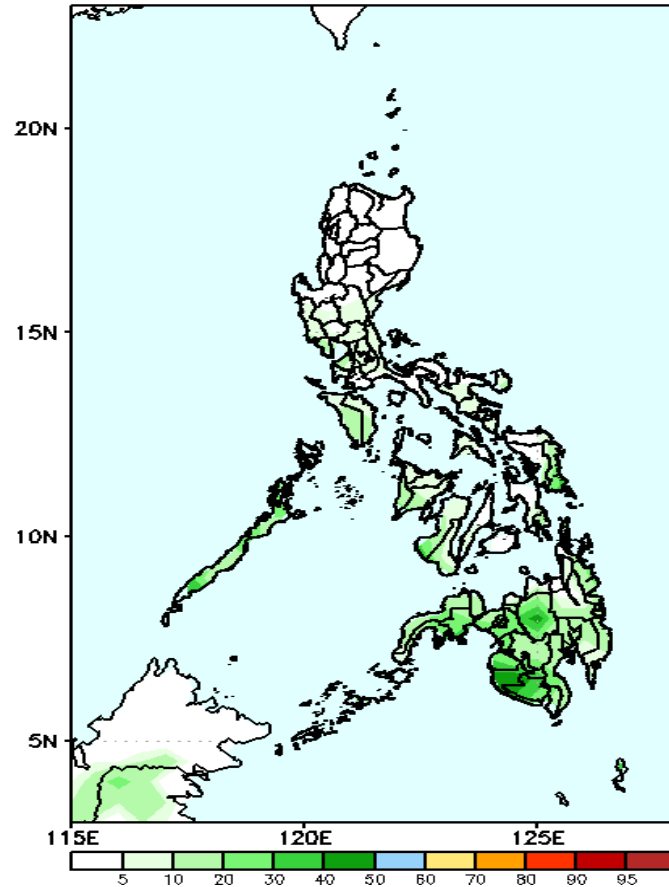
Week 1: May 17-23, 2021

GEFS Week-1 Exceedance Prob. > 100mm
Valid: 20210517 - 20210523



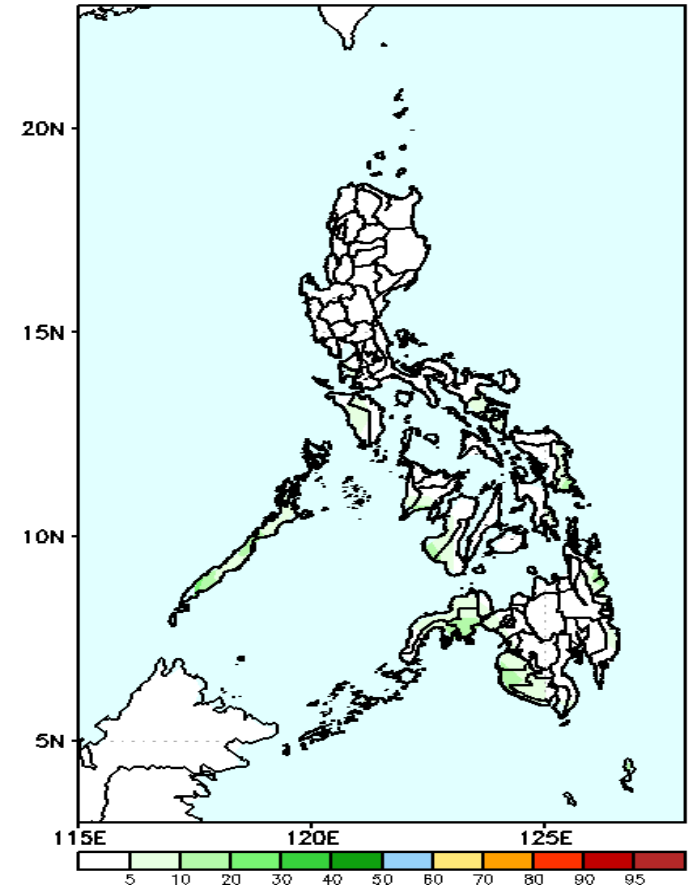
High probability of rainfall to exceed 100mm in Western and central Mindanao while less likely for the remaining parts of the country during the forecast period.

GEFS Week-1 Exceedance Prob. > 150mm
Valid: 20210517 - 20210523



Less probability of rainfall to exceed 150mm in most parts of the country during the forecast period.

GEFS Week-1 Exceedance Prob. > 200mm
Valid: 20210517 - 20210523



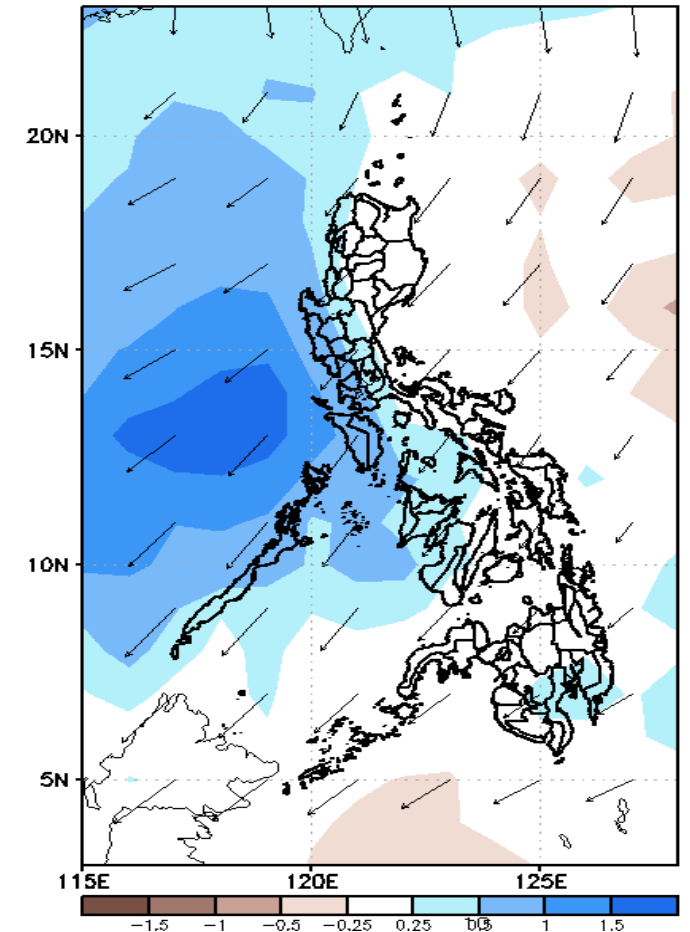
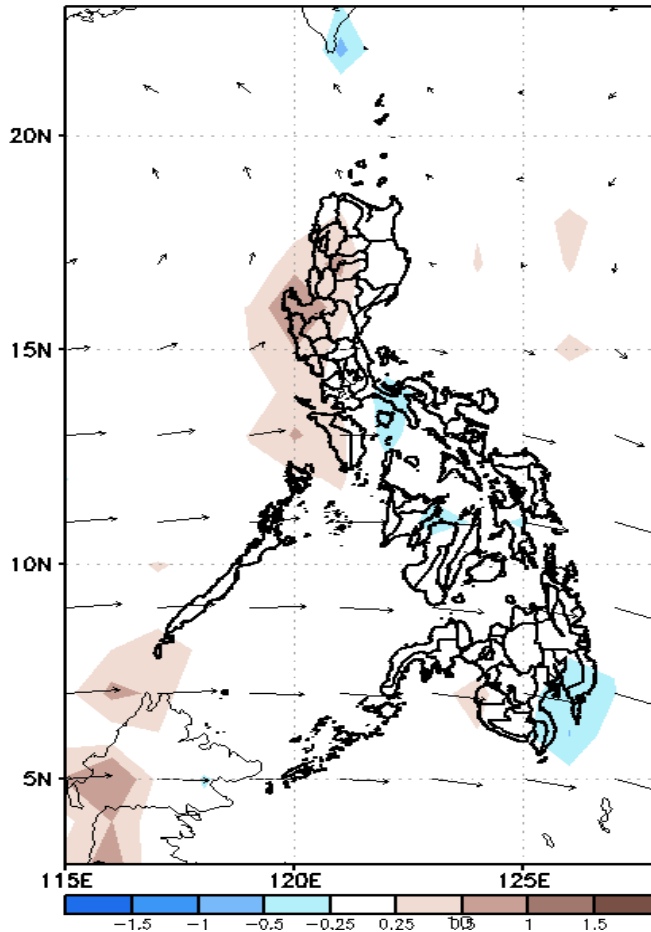
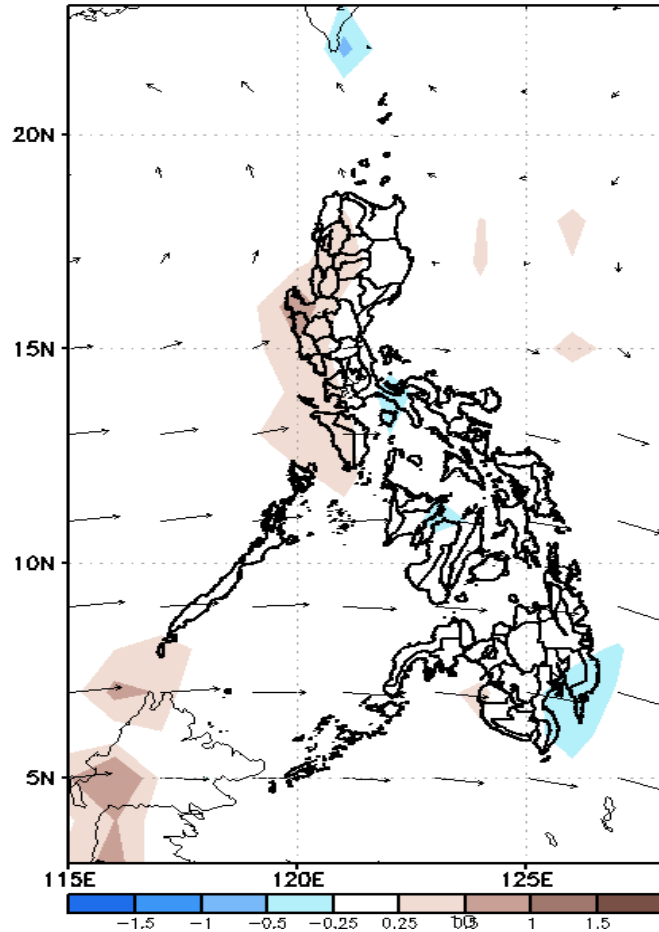
Less probability of rainfall to exceed 200mm in most parts of the country during the forecast period.



GEFS Week-2 Forecasts: Divergence & Wind Anomaly

Week 2: May 24-30, 2021

GEFS Week-2 850-hPa Divergence and Wind Anom
Valid: 20210524 - 20210530
GEFS Week-2 700-hPa Divergence and Wind Anom
Valid: 20210524 - 20210530
GEFS week-2 200-hPa Divergence and Wind Anom
Valid: 20210524 - 20210530

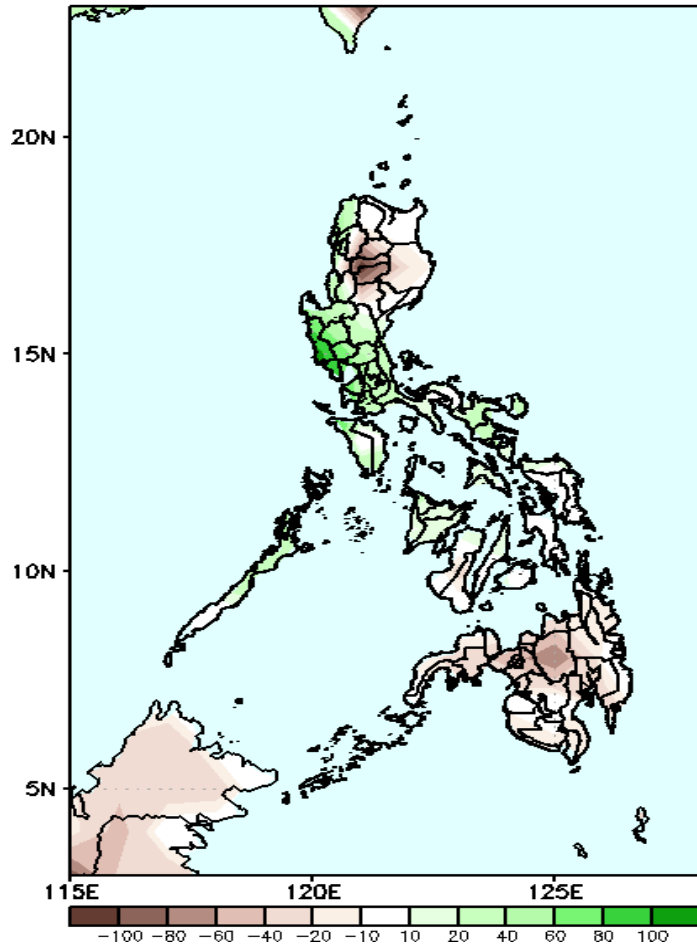


Upper and low level Divergence suggest likelihood of precipitation in western sections of Luzon and Visayas and parts of Davao region. Southwest windflow affecting western sections of the country. Easterlies affecting the remaining parts of the country attributing to warmer temperatures and higher heat index during the forecast period.

Precipitation Anomaly and Exceedance Probability > 25/50 mm

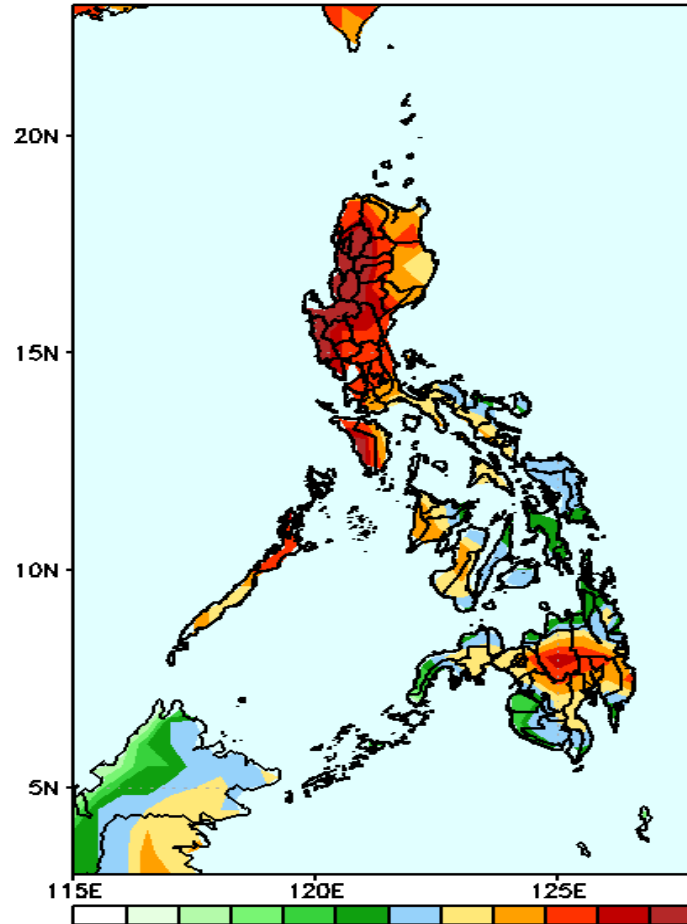
Week 2: May 24-30, 2021

GEFS Week-2 Precip Anomaly
Valid: 20210524 - 20210530



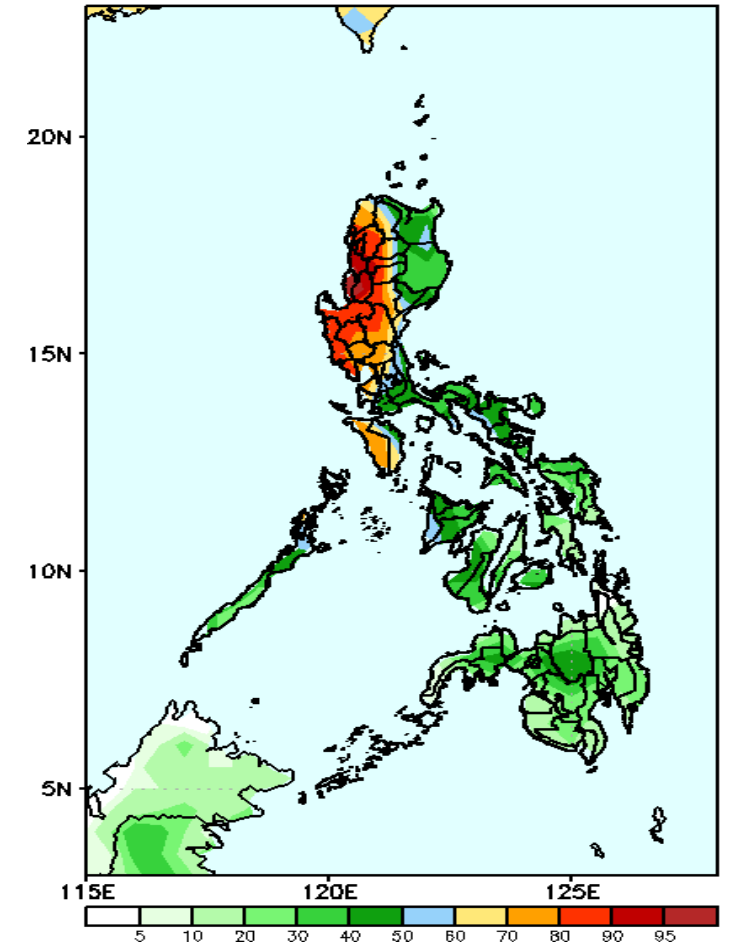
Rainfall deficit of 40-80mm is expected in Isabela, most parts of Cordillera Region and Mindanao while increase of rainfall of 40-100mm is more likely in Ilocos Norte, Pangasinan, Central & Southern Luzon during the forecast period.

GEFS Week-2 Exceedance Prob. > 25mm
Valid: 20210524 - 20210530



High probability of rainfall to exceed 25mm in most parts of the country while less likely for Leyte provinces, Surigao del Norte, Misamis oriental, Maguindanao and Sultan Kudarat during the forecast period.

GEFS Week-2 Exceedance Prob. > 50mm
Valid: 20210524 - 20210530

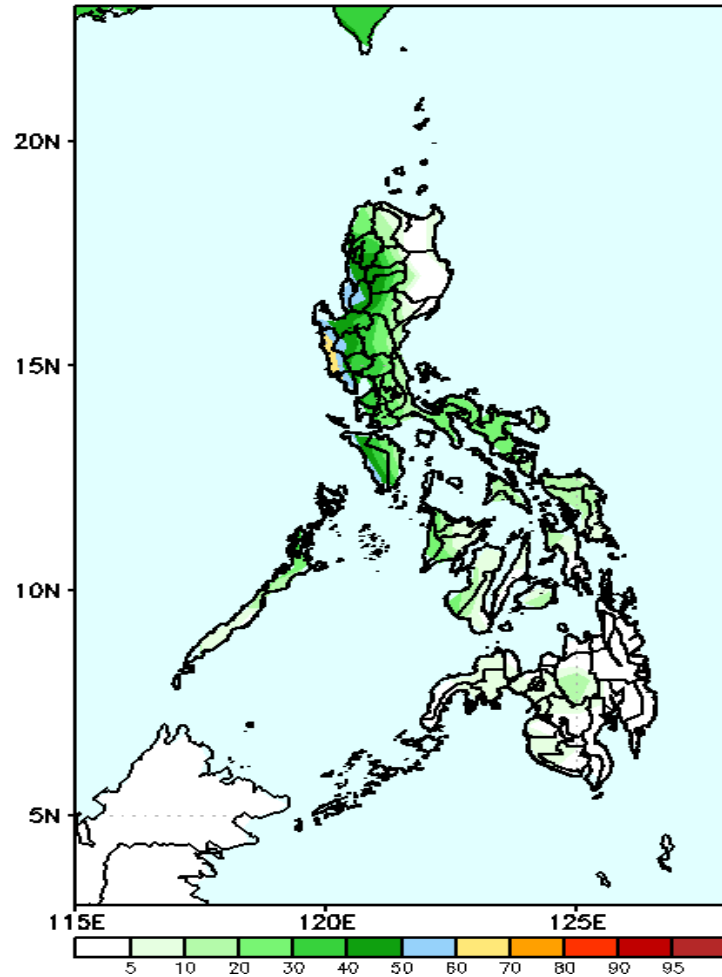


High probability of rainfall to exceed 50mm in most parts of Cordillera, Central Luzon and Mindoro provinces while less likely for the rest of the country during the forecast period.

Exceedance Probability > 100/150/200 mm

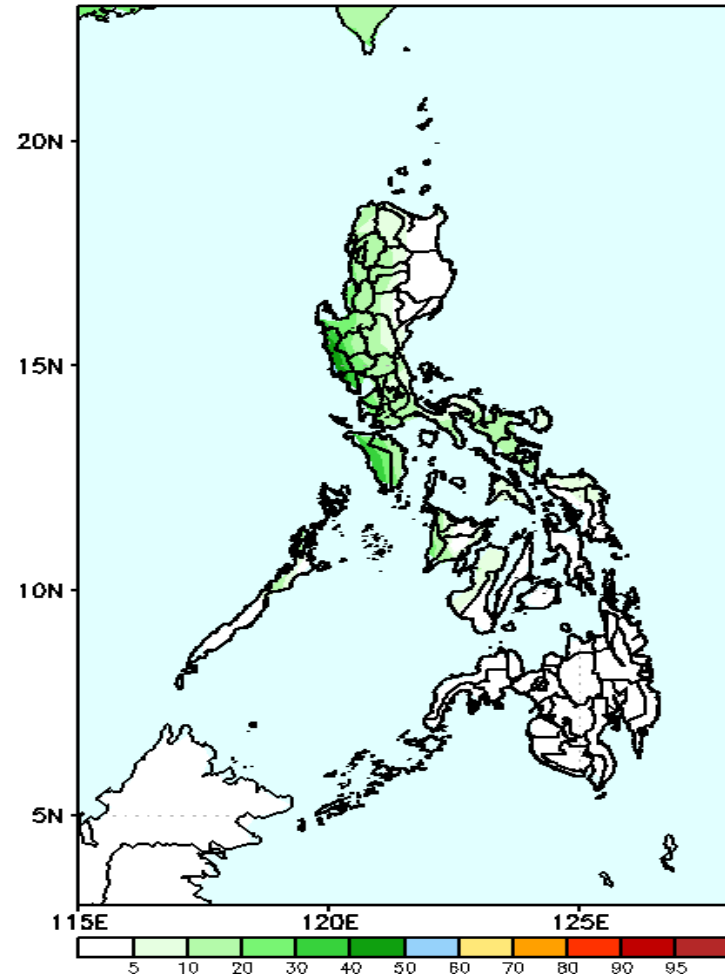
Week 2: May 24-30, 2021

GEFS Week-2 Exceedance Prob. > 100mm
Valid: 20210524 - 20210530



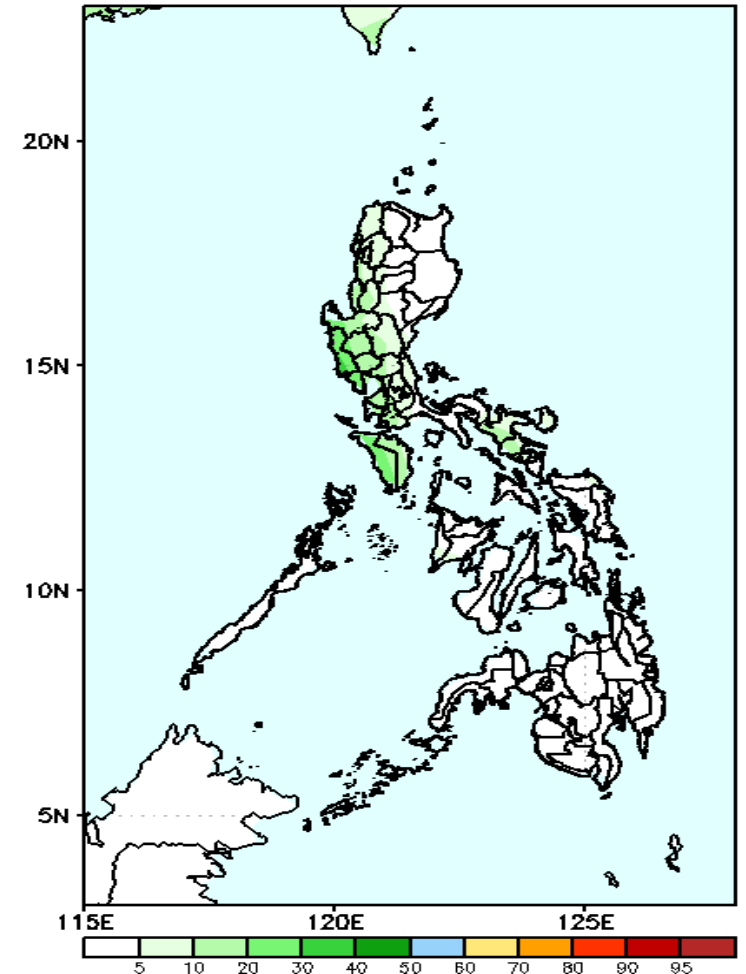
Less probability of rainfall to exceed 100mm in most parts of the country during the forecast period.

GEFS Week-2 Exceedance Prob. > 150mm
Valid: 20210524 - 20210530



Less probability of rainfall to exceed 150mm in most parts of the country during the forecast period.

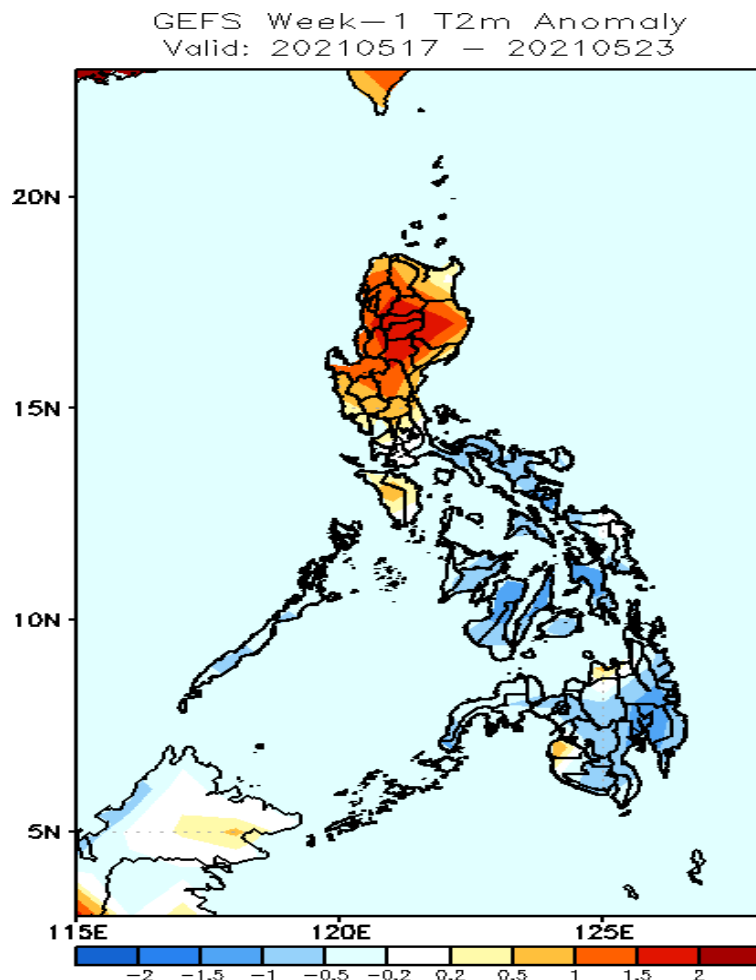
GEFS Week-2 Exceedance Prob. > 200mm
Valid: 20210524 - 20210530



Less probability of rainfall to exceed 200mm in most parts of the country during the forecast period.

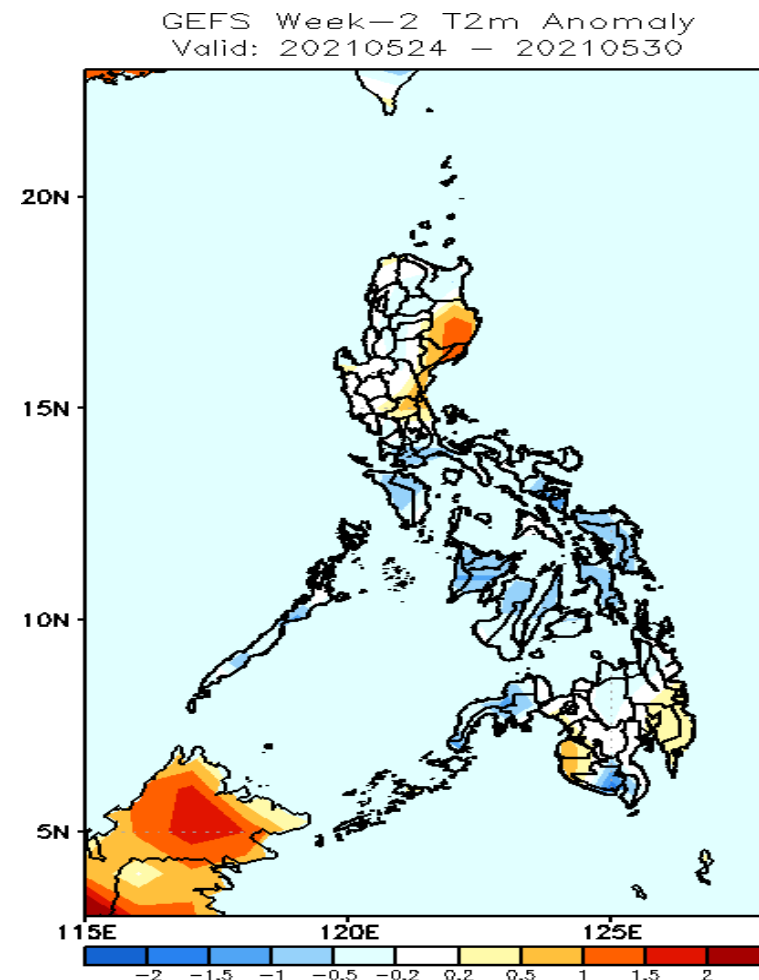


GEFS Week-1 & 2 Forecasts: T2m Anomaly



2m Temperature Week 1: May 17-23, 2021

Warmer than average surface air temperature will likely experience in most parts of Luzon while slightly cooler to cooler than average temperature for the rest of the country during the forecast period.



2m Temperature Week 2: May 24-30, 2021

Slightly warmer to warmer than average surface air temperature will likely experience in most parts of Cagayan valley, Aurora, Nueva Ecija, Maguindanao, Sultan Kudarat and Davao Region while average to slightly cooler than average temperature for the rest of the country during the forecast period.