



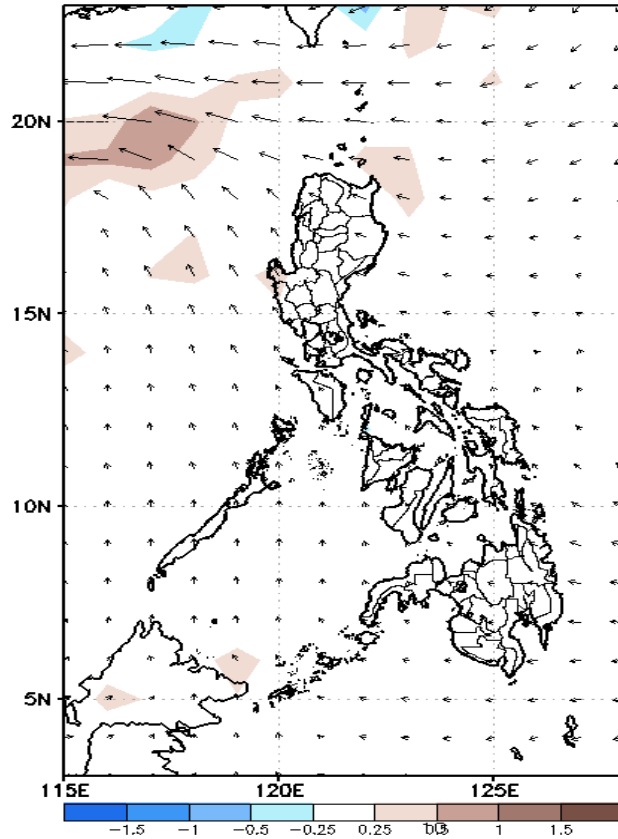
Week 1 & Week 2 Forecast for the Philippines using GEFS Model



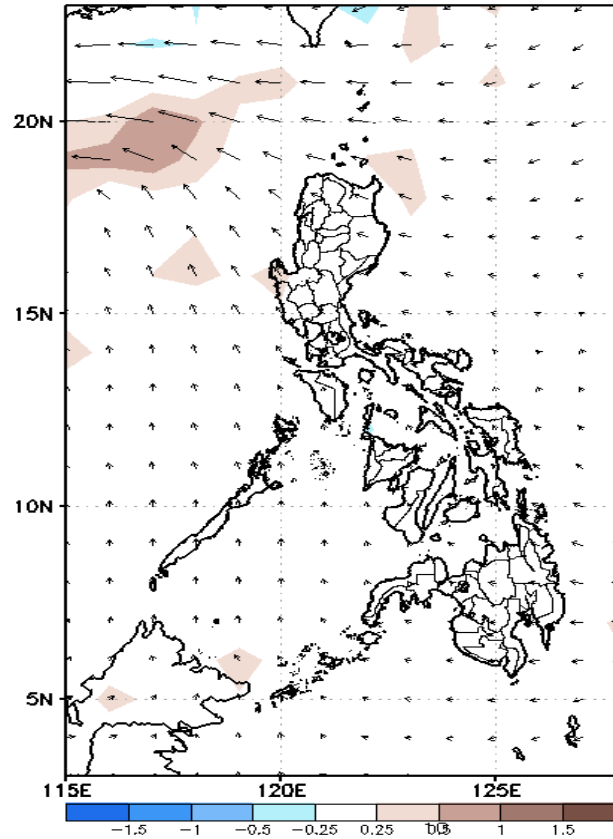
GEFS Week-1 Forecasts: Wind Anomaly Forecast

Week 1: Oct 17-23, 2022

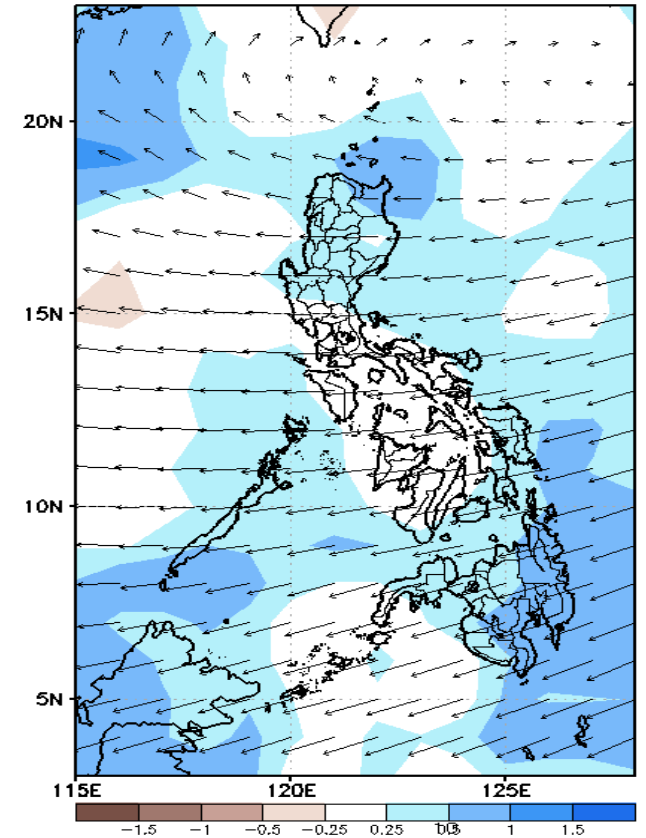
GEFS Week-1 850-hPa Divergence and Wind Anom
Valid: 20221017 - 20221023



GEFS Week-1 700-hPa Divergence and Wind Anom
Valid: 20221017 - 20221023



GEFS Week-1 200-hPa Divergence and Wind Anom
Valid: 20221017 - 20221023

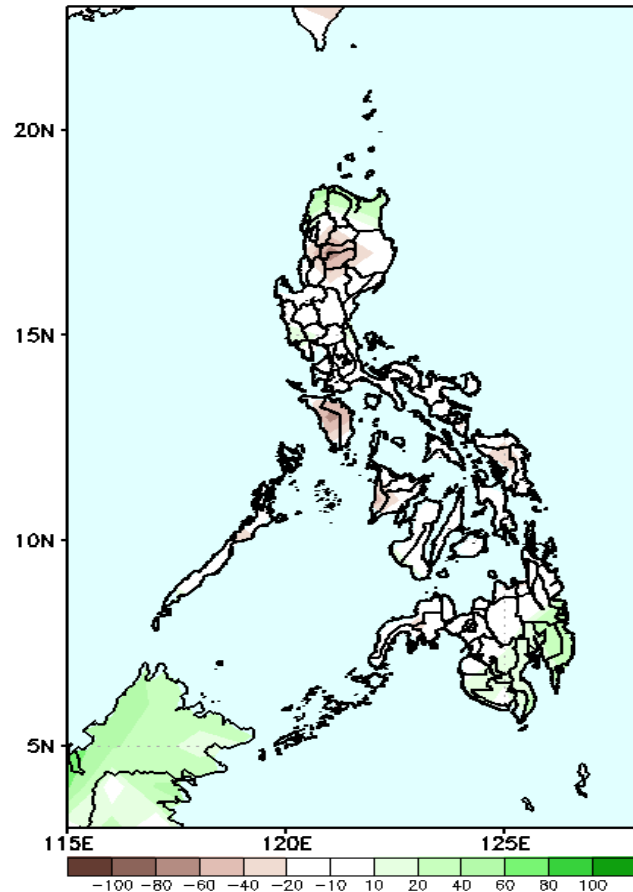


Northeasterly windflow will likely affect Extreme Northern Luzon while Easterlies is forecasted to affect most parts of the country during the forecast period.

Precipitation Anomaly and Exceedance Probability > 25/50 mm

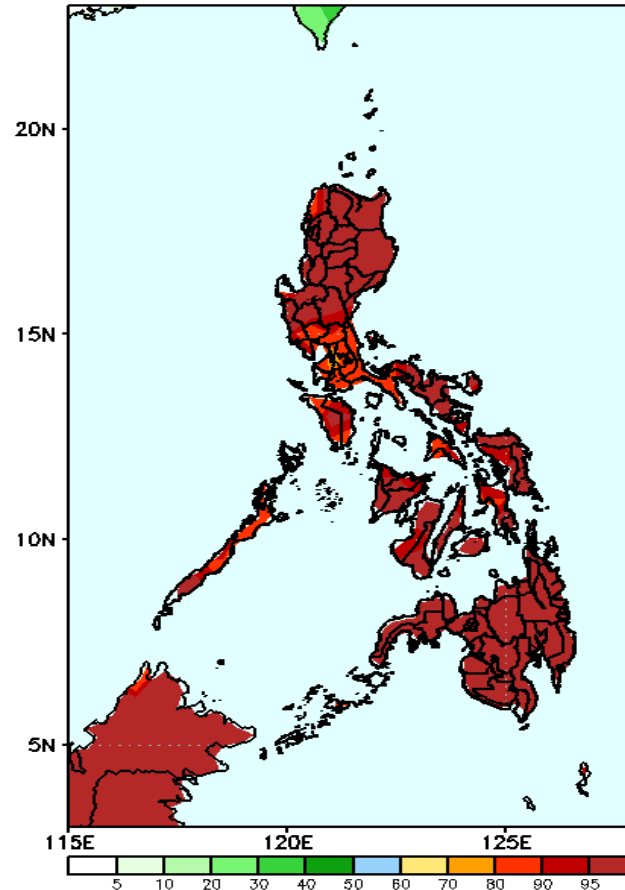
Week 1: Oct 17-23, 2022

GEFS Week-1 Precip Anomaly
Valid: 20221017 - 20221023



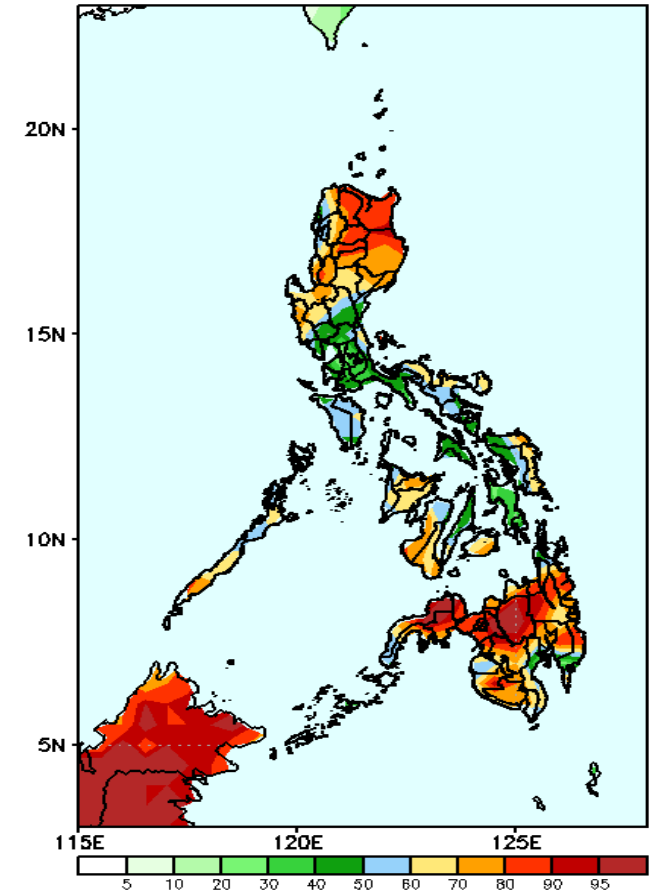
Rainfall deficit of 20-80mm is expected in most parts of the country except in Ilocos Norte, Apayao, Cagayan and southern Mindanao where there is 20-60mm increase of rainfall during the forecast period

GEFS Week-1 Exceedance Prob. > 25mm
Valid: 20221017 - 20221023



High probability of rainfall to exceed 25mm in most parts of the country during the forecast period.

GEFS Week-1 Exceedance Prob. > 50mm
Valid: 20221017 - 20221023



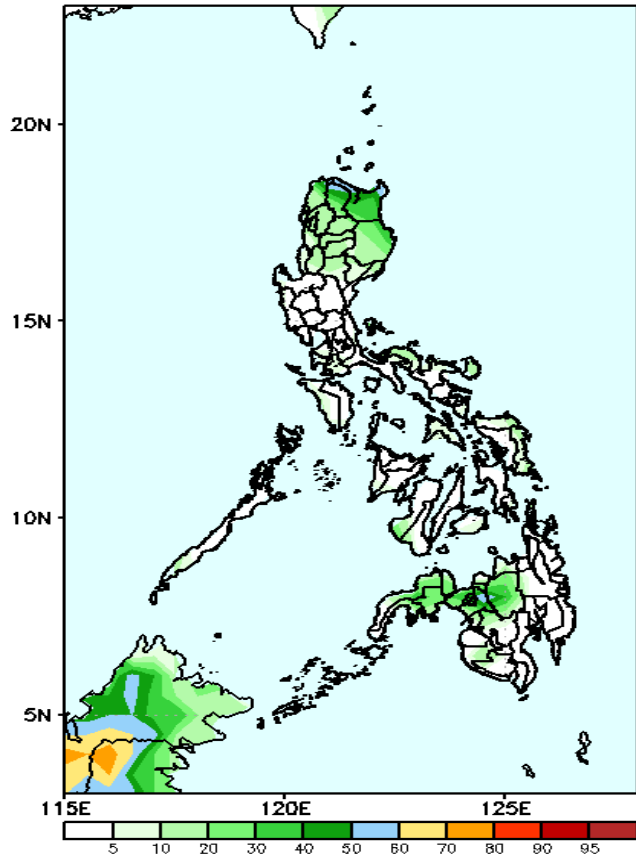
High probability of rainfall to exceed 50mm in most parts of Northern and Central Luzon and Mindanao while 40-80% chance for the rest of the country during the forecast period.



Exceedance Probability > 100/150/200 mm

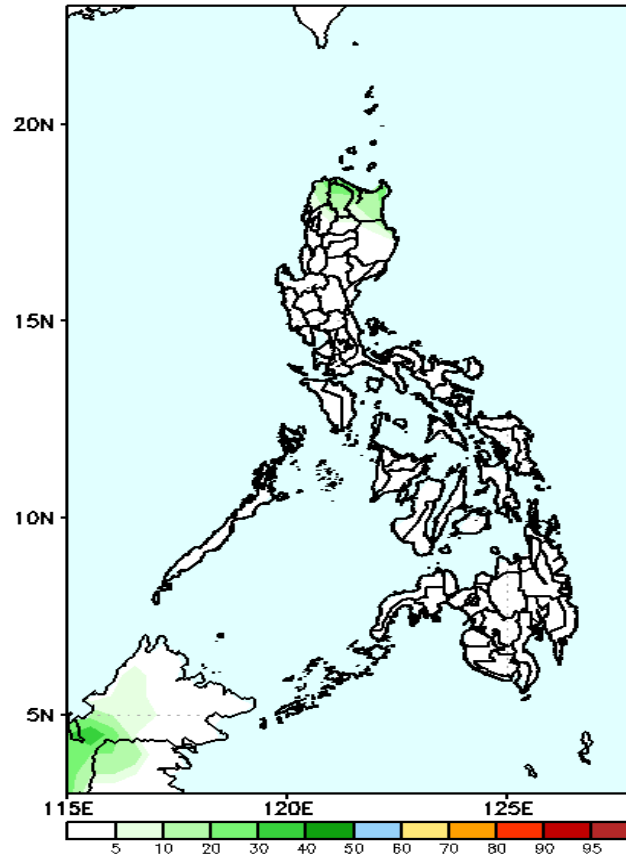
Week 1: Oct 17-23, 2022

GEFS Week-1 Exceedance Prob. > 100mm
Valid: 20221017 - 20221023



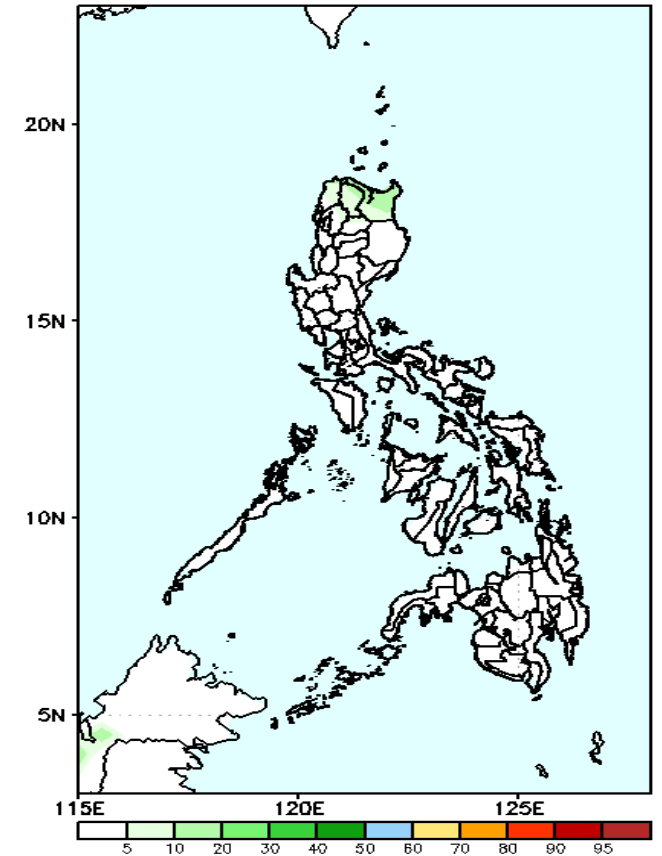
Low probability of rainfall to exceed 100mm in most parts of the country during the forecast period.

GEFS Week-1 Exceedance Prob. > 150mm
Valid: 20221017 - 20221023



Low probability of rainfall to exceed 150mm in most parts of the country during the forecast period.

GEFS Week-1 Exceedance Prob. > 200mm
Valid: 20221017 - 20221023

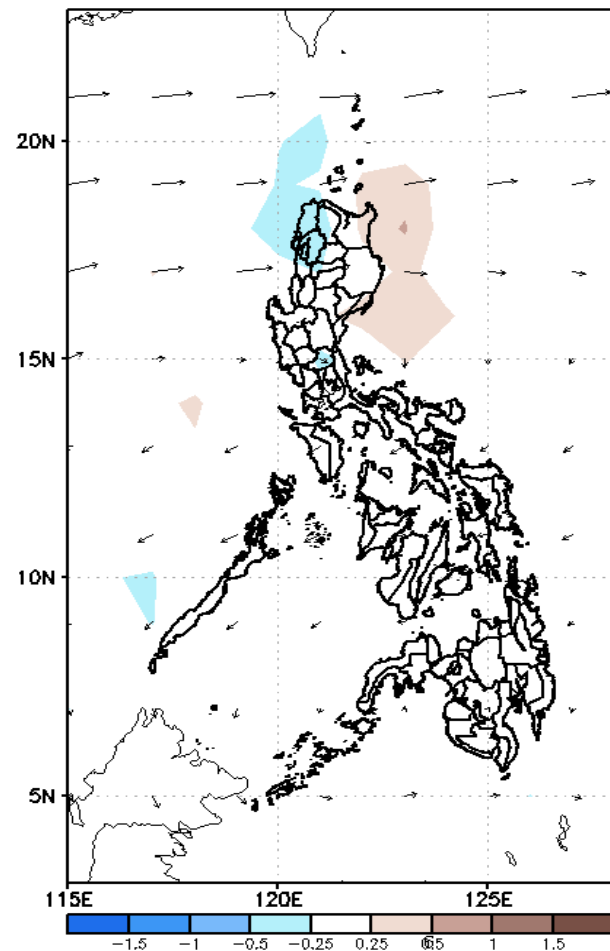


Low probability of rainfall to exceed 200mm in most parts of the country during the forecast period.

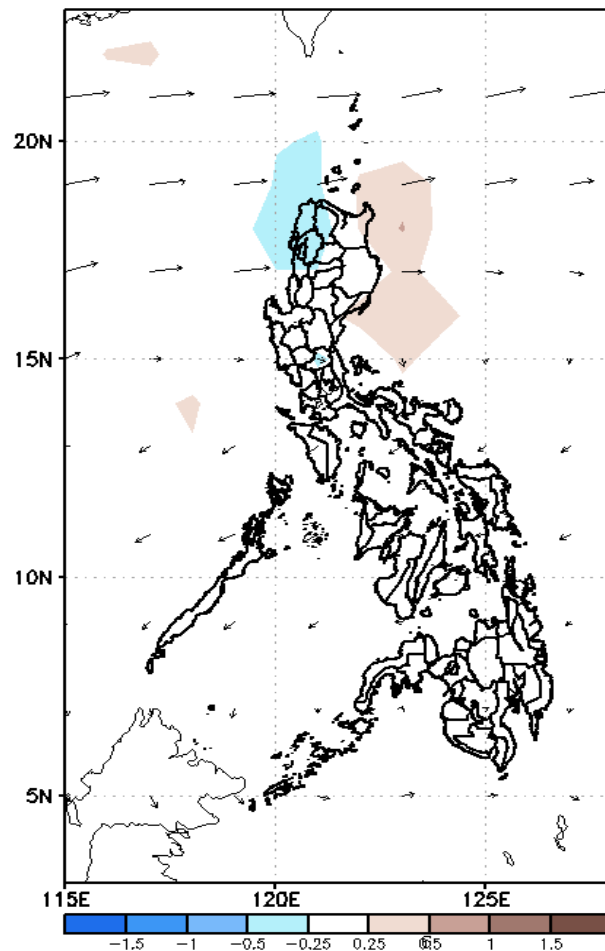
GEFS Week-2 Forecasts: Wind Anomaly Forecast

Week 2: Oct 24-30, 2022

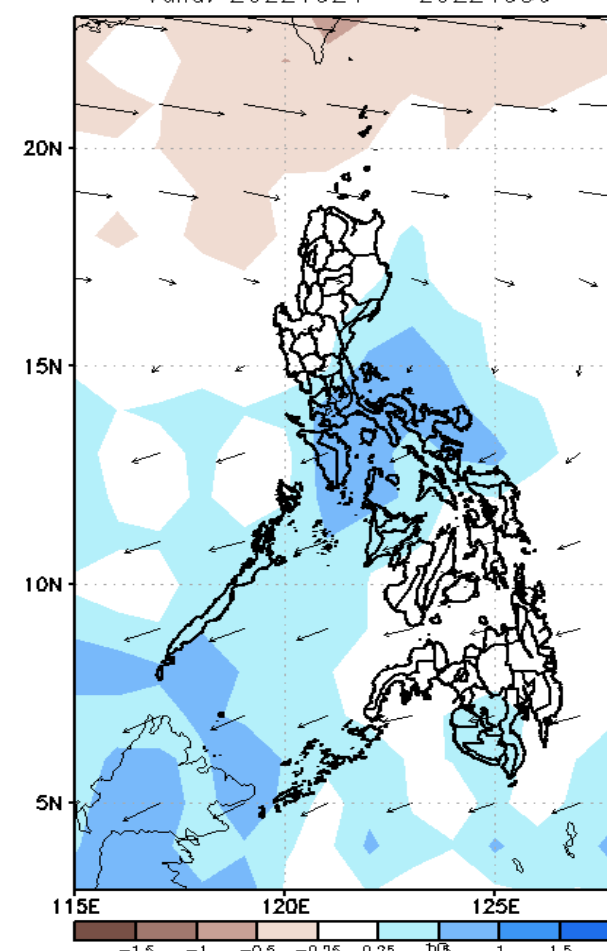
GEFS Week-2 850-hPa Divergence and Wind Anom
Valid: 20221024 - 20221030



GEFS Week-2 700-hPa Divergence and Wind Anom
Valid: 20221024 - 20221030



GEFS week-2 200-hPa Divergence and Wind Anom
Valid: 20221024 - 20221030

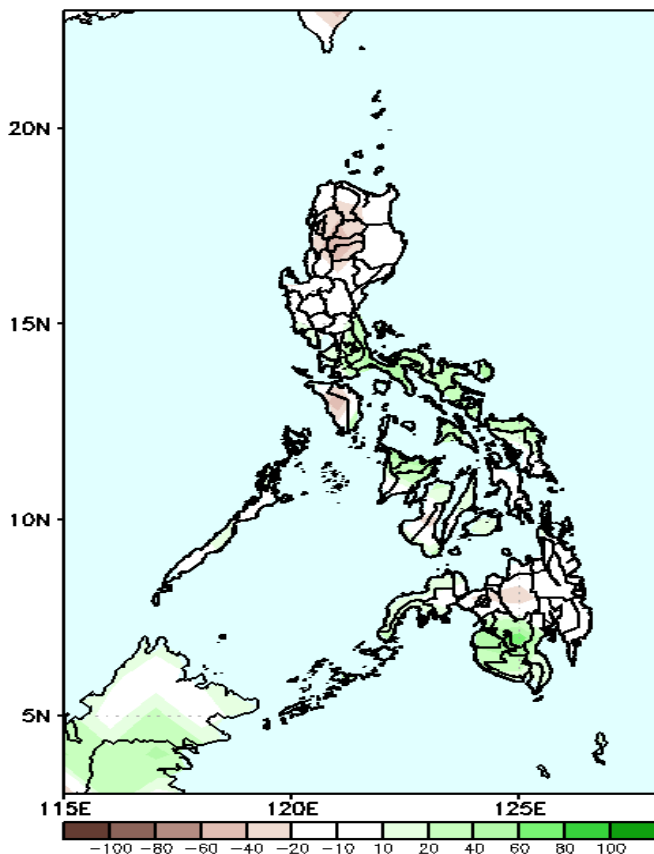


Westerly windflow affecting Northern Luzon while Easterlies is forecasted to affect the rest of the country during the forecast period.

Precipitation Anomaly and Exceedance Probability > 25/50 mm

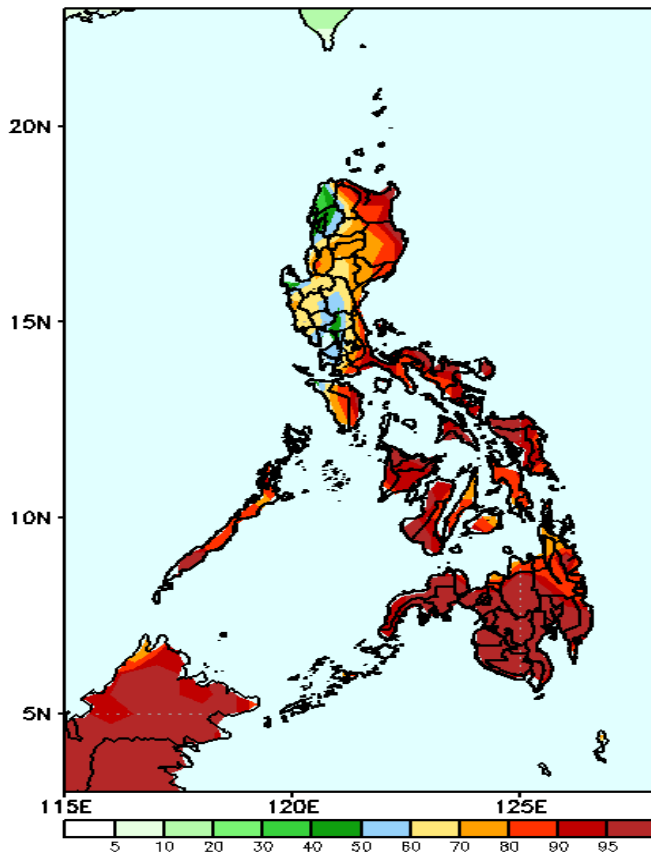
Week 2: Oct 24-30, 2022

GEFS Week-2 Precip Anomaly
Valid: 20221024 - 20221030



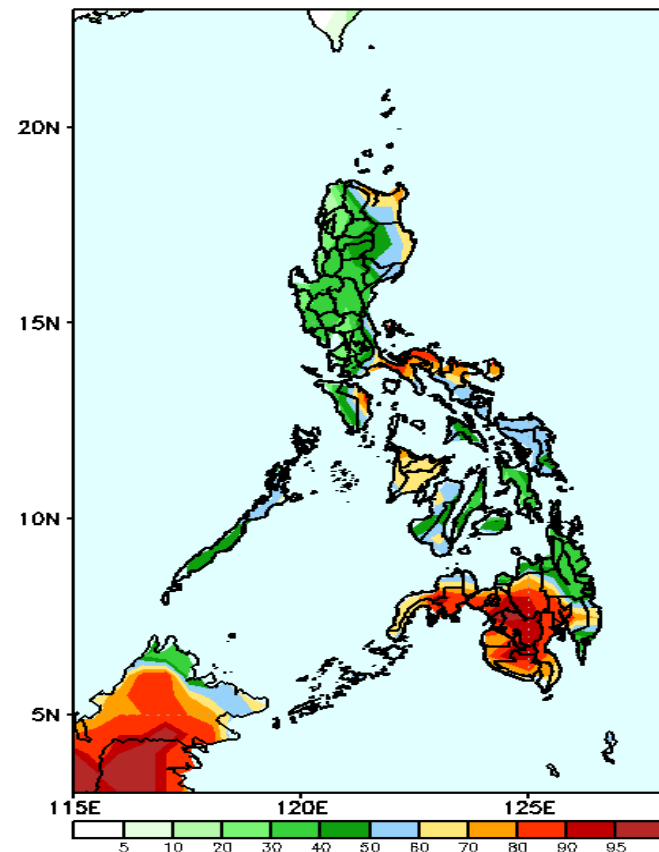
Rainfall deficit of 10-40mm is expected in Cordillera Region, Mindoro and Bukidnon while 40-80mm increase of rainfall in most parts of Bicol Region, Eastern Visayas, Panay Island and southwestern Mindanao during the forecast period.

GEFS Week-2 Exceedance Prob. > 25mm
Valid: 20221024 - 20221030



High probability of rainfall to exceed 25mm in most parts of the country during the forecast period.

GEFS Week-2 Exceedance Prob. > 50mm
Valid: 20221024 - 20221030



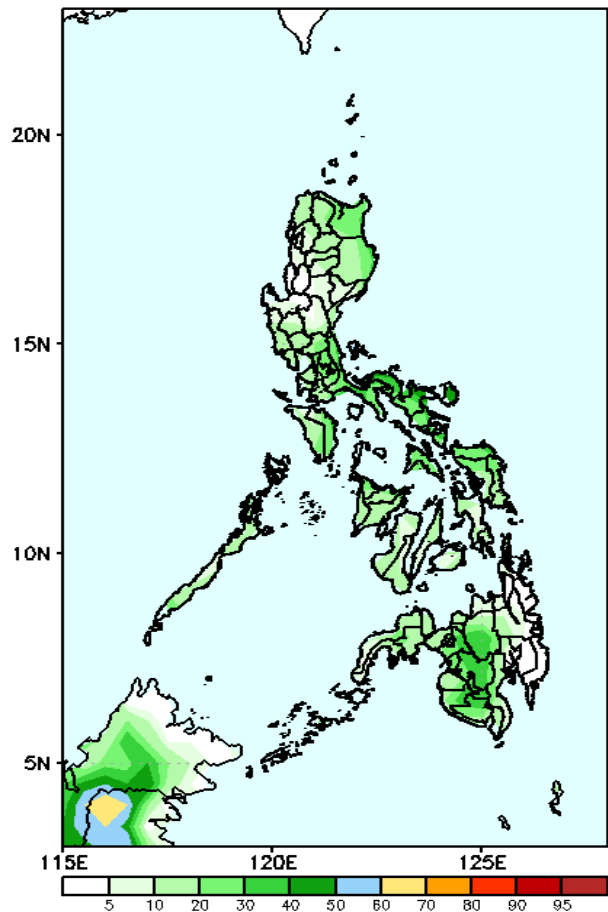
High probability of rainfall to exceed 50mm in most parts of Bicol Region, western & central Mindanao while 50-85% chance for the rest of the country during the forecast period.



Exceedance Probability > 100/150/200 mm

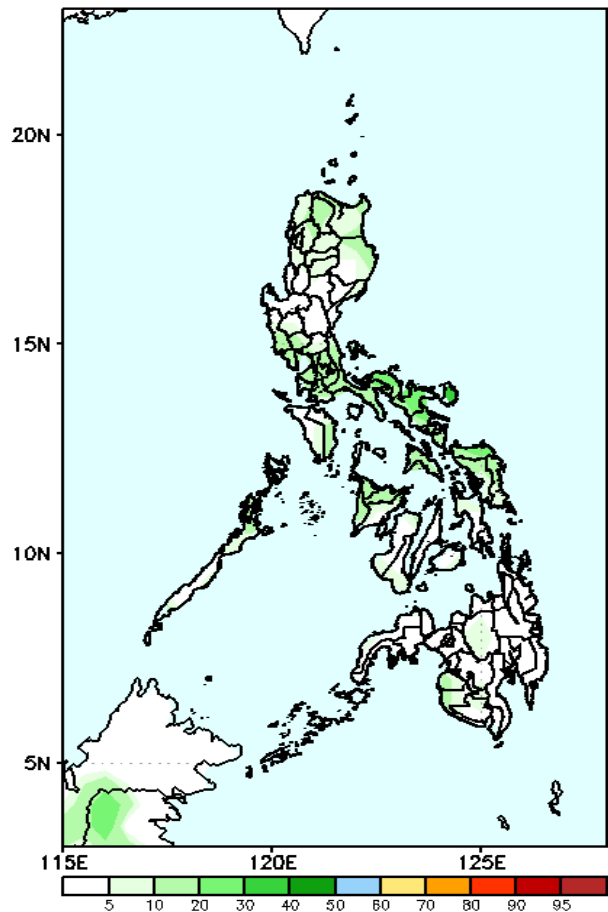
Week 2: Oct 24-30, 2022

GEFS Week-2 Exceedance Prob. > 100mm
Valid: 20221024 – 20221030



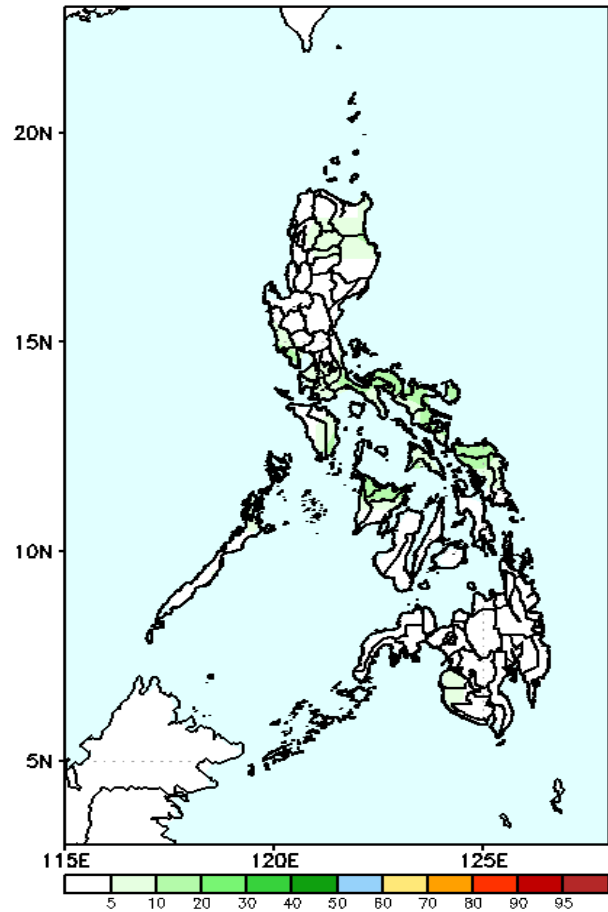
Low probability of rainfall to exceed 100mm in most parts of the country during the forecast period.

GEFS Week-2 Exceedance Prob. > 150mm
Valid: 20221024 – 20221030



Low probability of rainfall to exceed 150mm in most parts of the country during the forecast period.

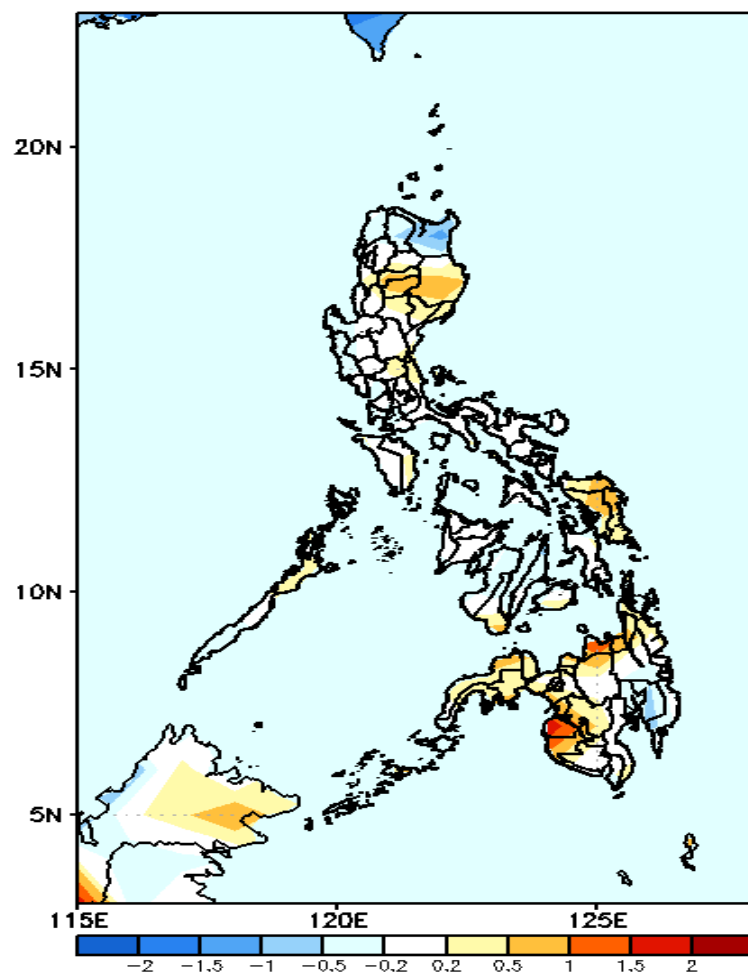
GEFS Week-2 Exceedance Prob. > 200mm
Valid: 20221024 – 20221030



Low probability of rainfall to exceed 200mm in most parts of the country during the forecast period.

GEFS Week-1 & 2 Forecasts: T2m Anomaly

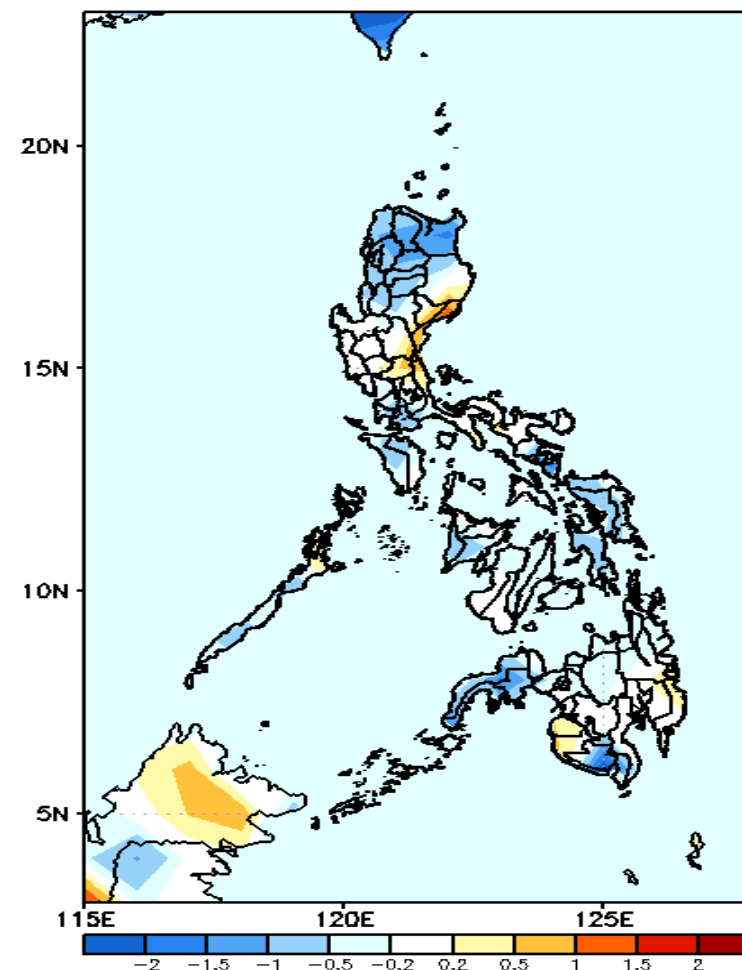
GEFS Week-1 T2m Anomaly
Valid: 20221017 - 20221023



2m Temperature Week 1: Oct 17-23, 2022

Near to slightly warmer than average surface air temperature will likely experience in most parts of the country except in Cagayan (slightly cooler), Maguindanao and Misamis Oriental (warmer) during the forecast period.

GEFS Week-2 T2m Anomaly
Valid: 20221024 - 20221030



2m Temperature Week 2: Oct 24-30, 2022

Near to cooler than average surface air temperature will likely experience in most parts of the country except in some areas in eastern Luzon, Maguindanao and Sultan Kudarat where slightly warmer than average surface air temperature is expected during the forecast period.