



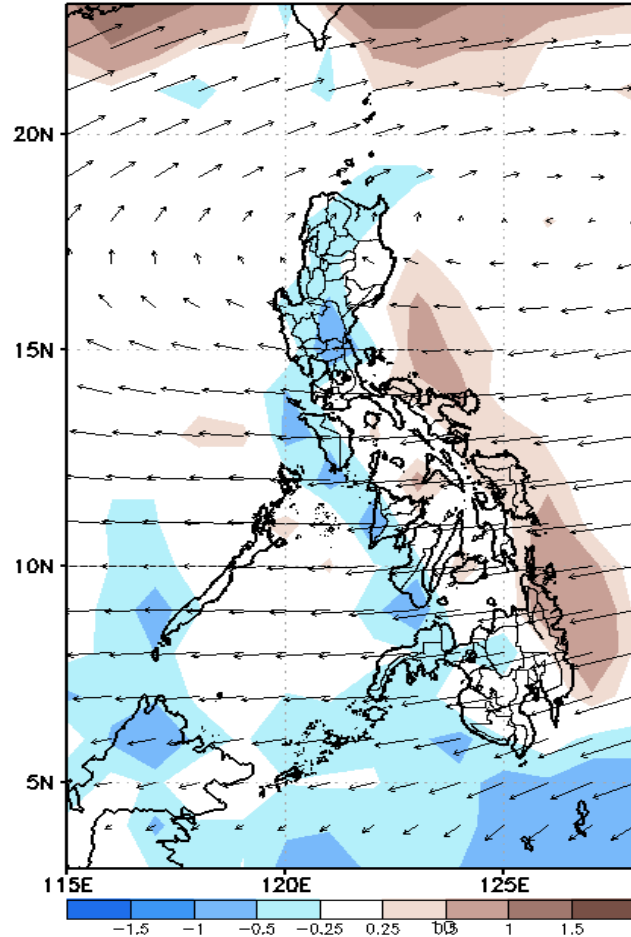
Week 1 & Week 2 Forecast for the Philippines using GEFS Model



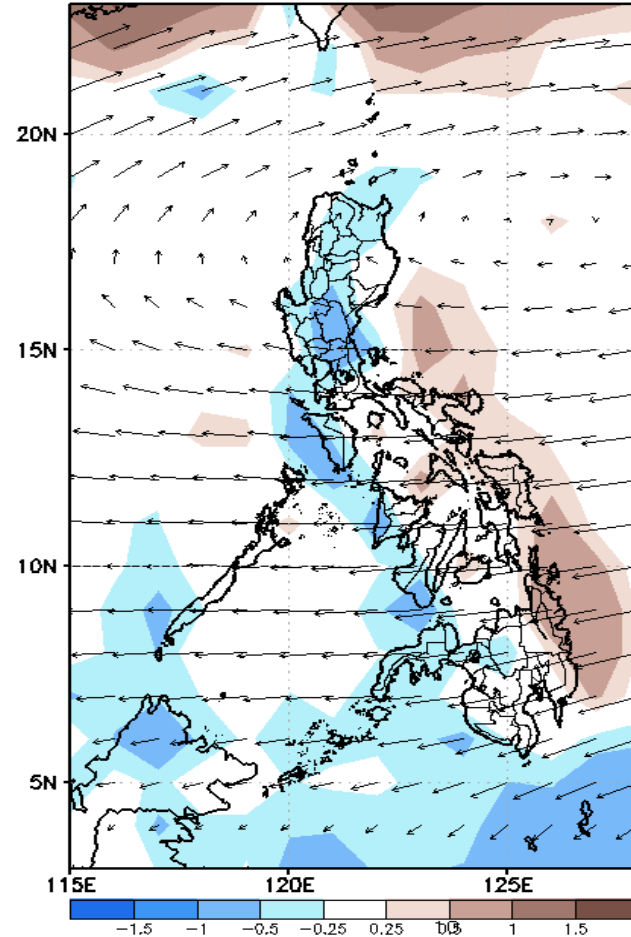
GEFS Week-1 Forecasts: Divergence & Wind Anomaly

Week 1: Feb 18-24, 2022

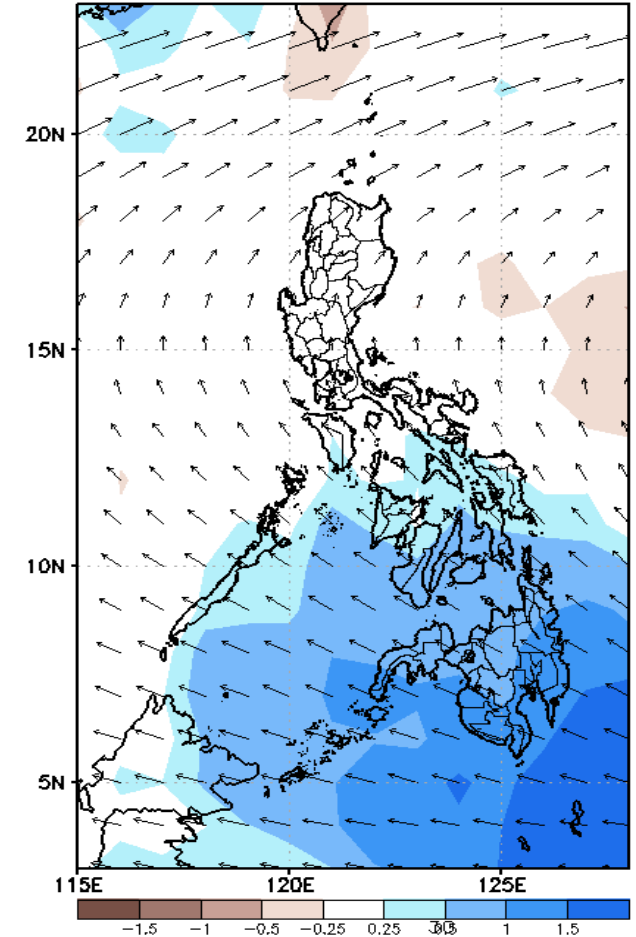
GEFS Week-1 850-hPa Divergence and Wind Anom
Valid: 20220218 - 20220224



GEFS Week-1 700-hPa Divergence and Wind Anom
Valid: 20220218 - 20220224



GEFS Week-1 200-hPa Divergence and Wind Anom
Valid: 20220218 - 20220224

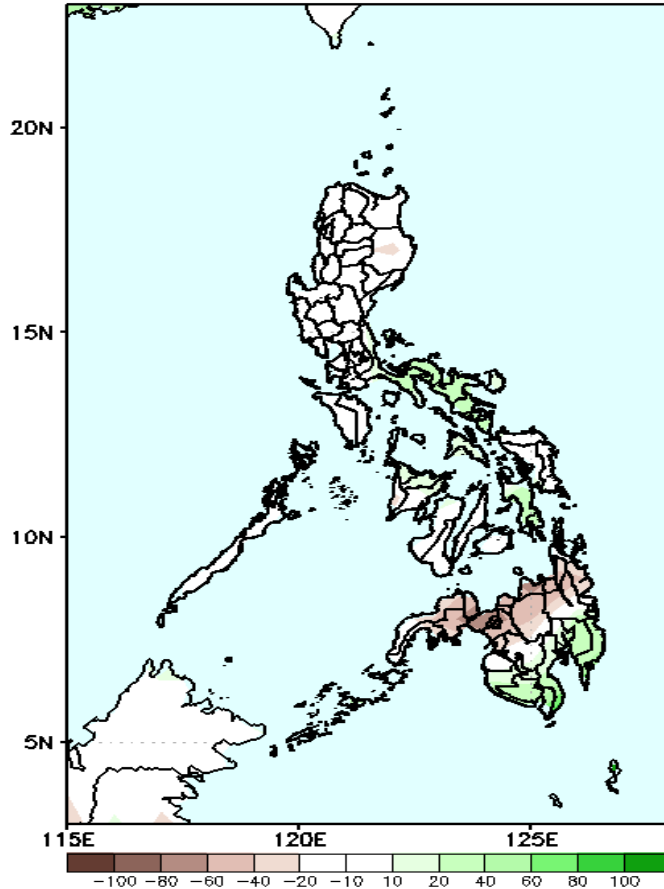


Upper and low level Divergence suggest a likelihood of light to moderate precipitation in most parts of MIMAROPA, Visayas and most parts of Mindanao. Northeast Monsoon affecting Northern Luzon while Easterlies affecting the rest of the country during the forecast period.

Precipitation Anomaly and Exceedance Probability > 25/50 mm

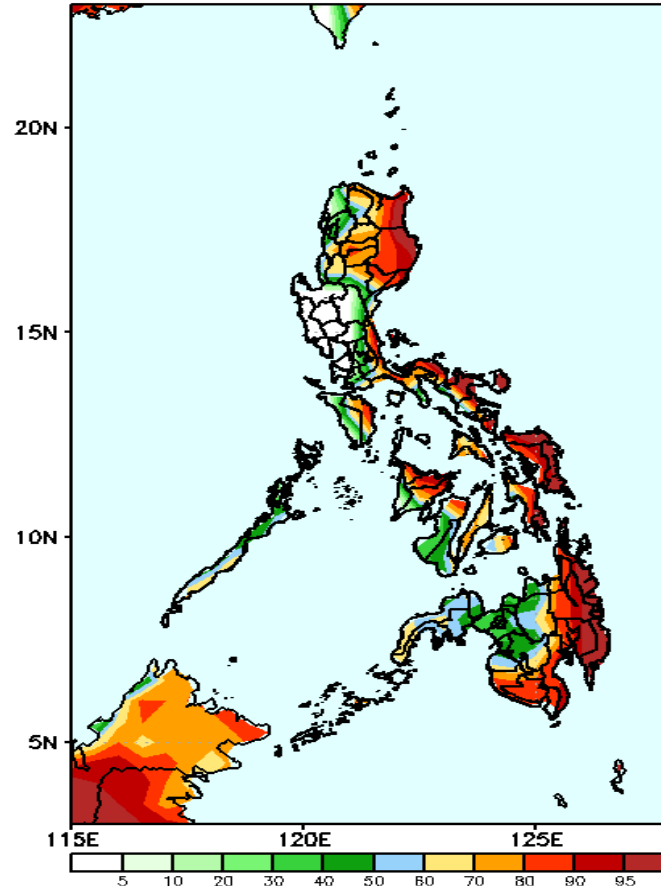
Week 1: Feb 18-24, 2022

GEFS Week-1 Precip Anomaly
Valid: 20220218 - 20220224



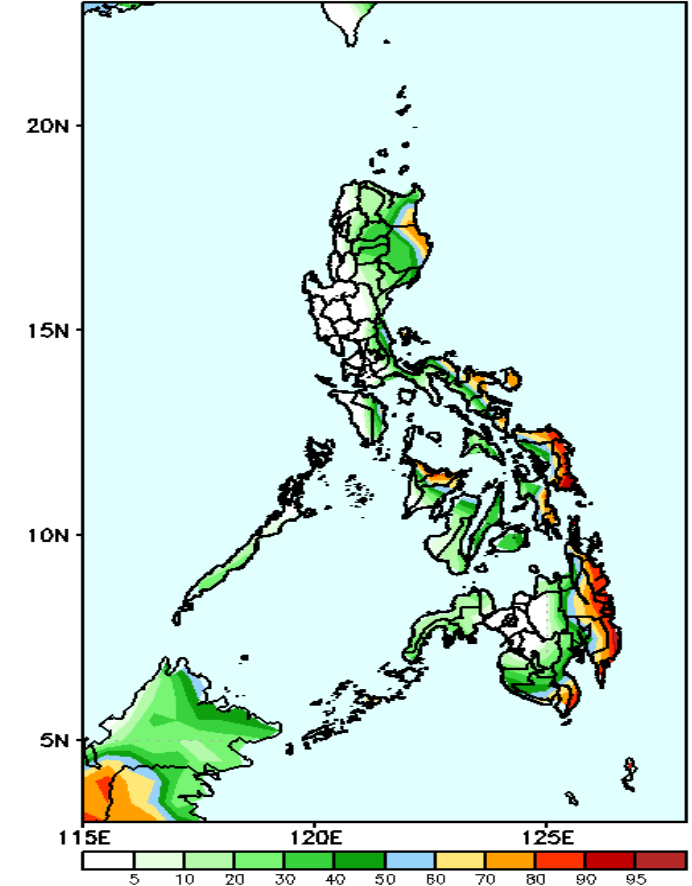
Rainfall deficit of 30-70mm in northern Mindanao while 40-70mm increase of rainfall in most parts of Bicol Region, southern Leyte & southern Mindanao is expected during the forecast period.

GEFS Week-1 Exceedance Prob. > 25mm
Valid: 20220218 - 20220224



High probability of rainfall to exceed 25mm in most parts of the country except in Central Luzon, Occ. Mindoro, western parts of Panay & Negros Island and northwestern Mindanao during the forecast period.

GEFS Week-1 Exceedance Prob. > 50mm
Valid: 20220218 - 20220224

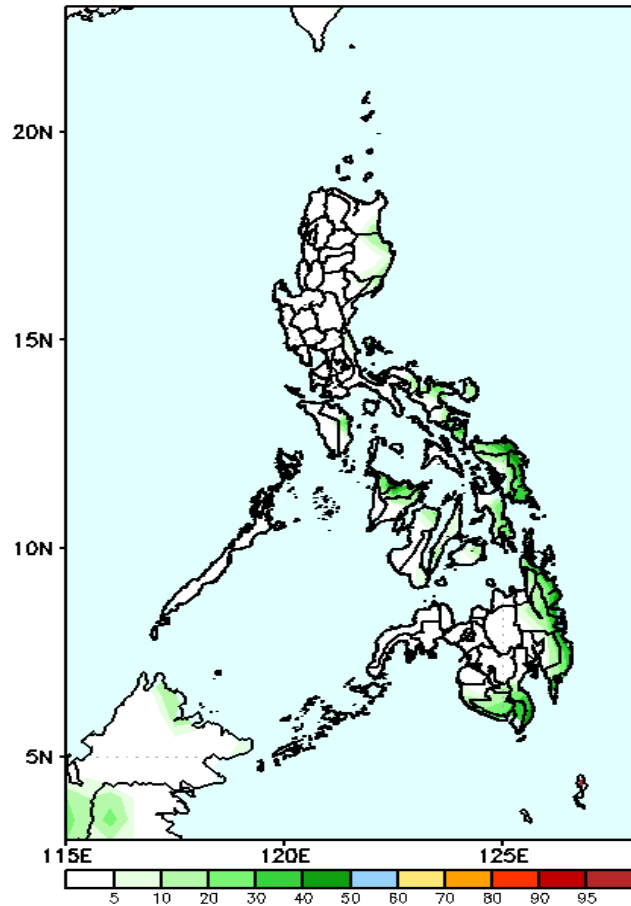


60-95% probability of rainfall to exceed 50mm in the eastern parts of Cagayan, Isabela, Bicol Region, Eastern Samar, Southern Leyte, Capiz, Davao Occ. and eastern Mindanao while less likely for the rest of the country during the forecast period.

Exceedance Probability > 100/150/200 mm

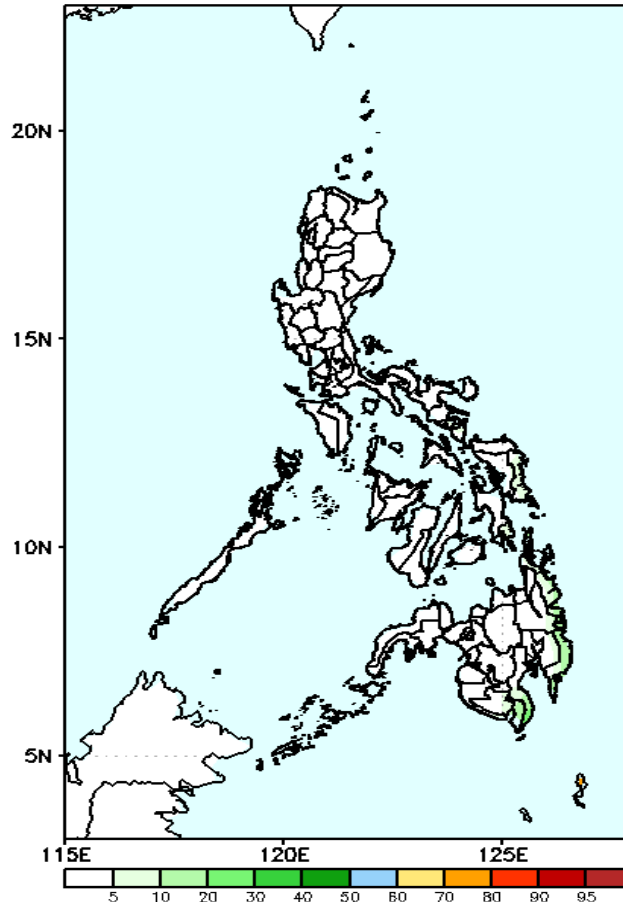
Week 1: Feb 18-24, 2022

GEFS Week-1 Exceedance Prob. > 100mm
Valid: 20220218 - 20220224



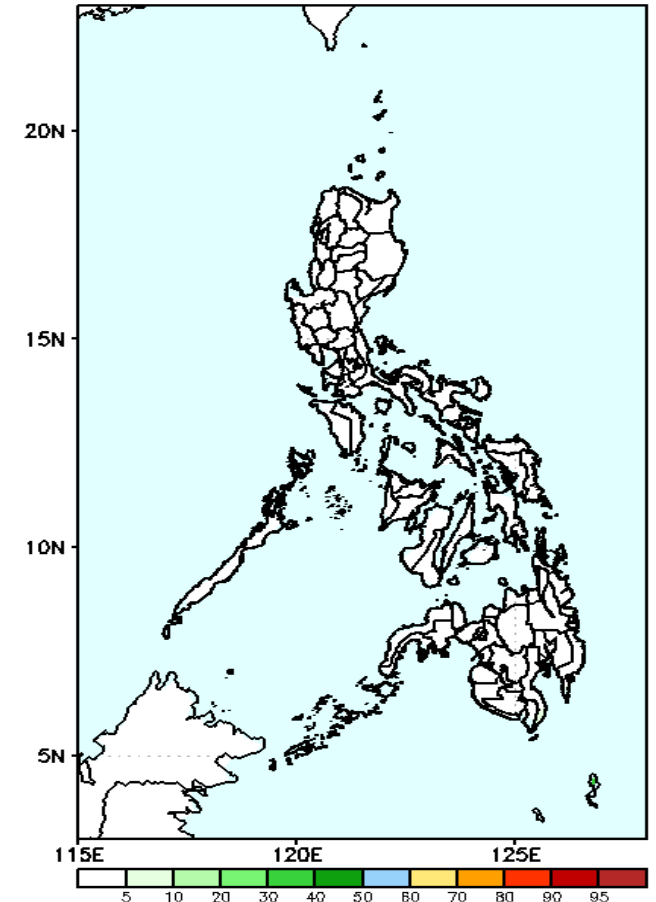
Low probability of rainfall to exceed 100mm in most parts of the country during the forecast period.

GEFS Week-1 Exceedance Prob. > 150mm
Valid: 20220218 - 20220224



Low probability of rainfall to exceed 150mm in most parts of the country during the forecast period.

GEFS Week-1 Exceedance Prob. > 200mm
Valid: 20220218 - 20220224

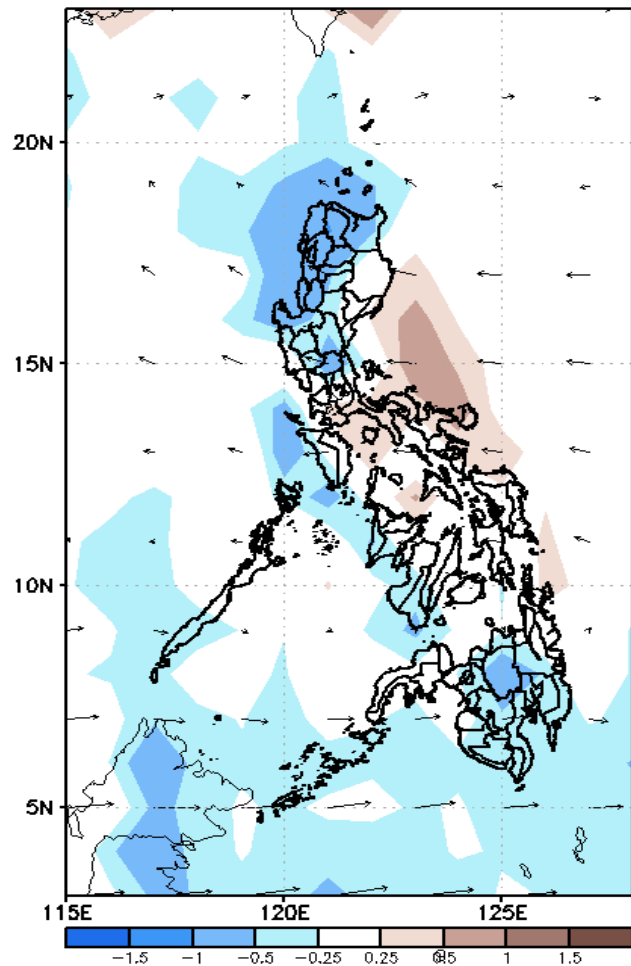


Low probability of rainfall to exceed 200mm in most parts of the country during the forecast period.

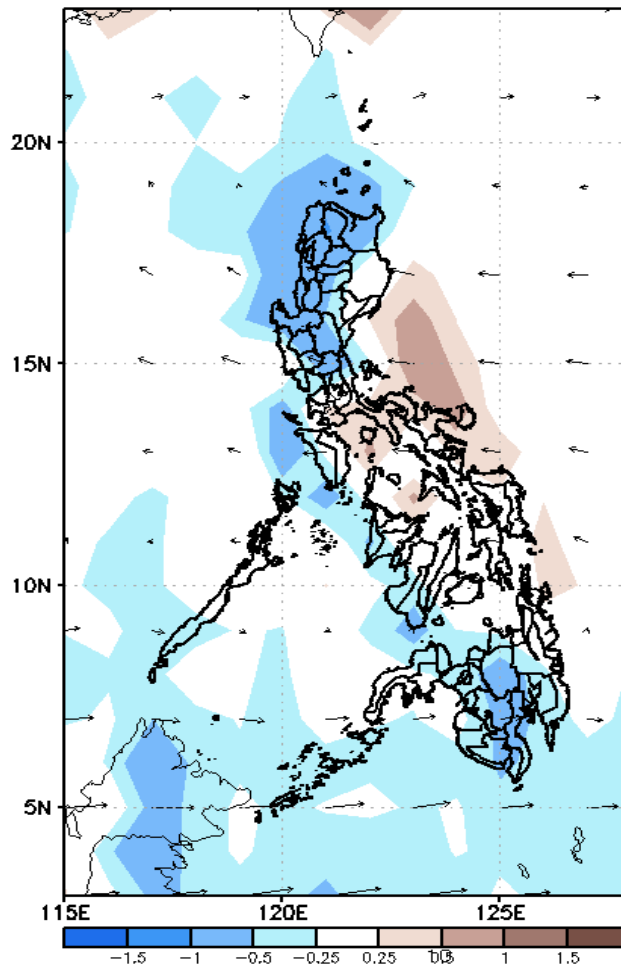
GEFS Week-2 Forecasts: Divergence & Wind Anomaly

Week 2: Feb 25- Mar 03, 2022

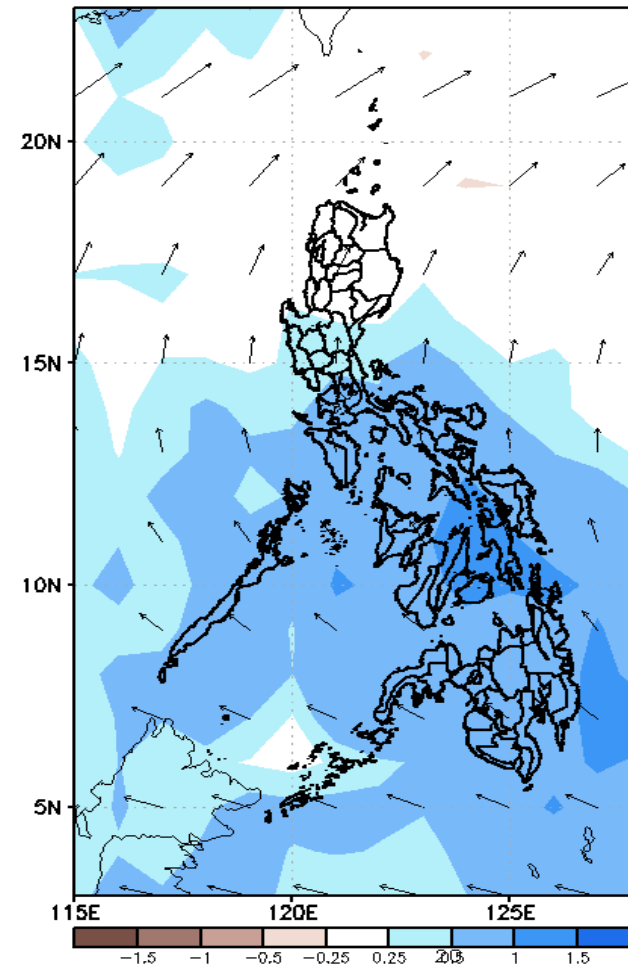
GEFS Week-2 850-hPa Divergence and Wind Anom
Valid: 20220225 - 20220303



GEFS Week-2 700-hPa Divergence and Wind
Valid: 20220225 - 20220303



GEFS week-2 200-hPa Divergence and Wind Anomaly
Valid: 20220225 - 20220303

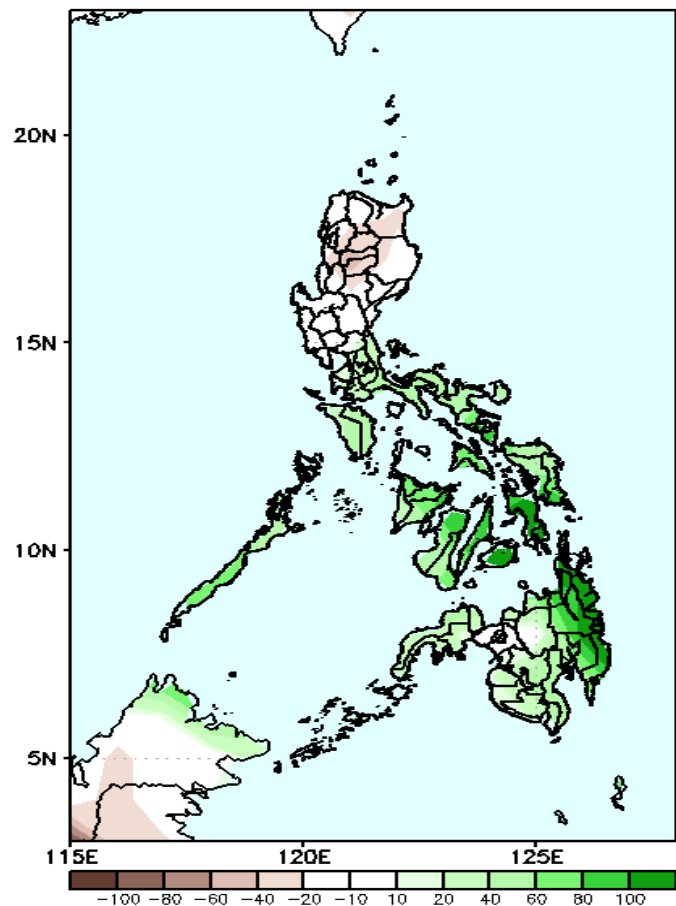


Upper and low level Divergence suggest a likelihood of light to moderate precipitation in most parts of the country except Northern Luzon. Easterlies affecting the rest of the country during the forecast period.

Precipitation Anomaly and Exceedance Probability > 25/50 mm

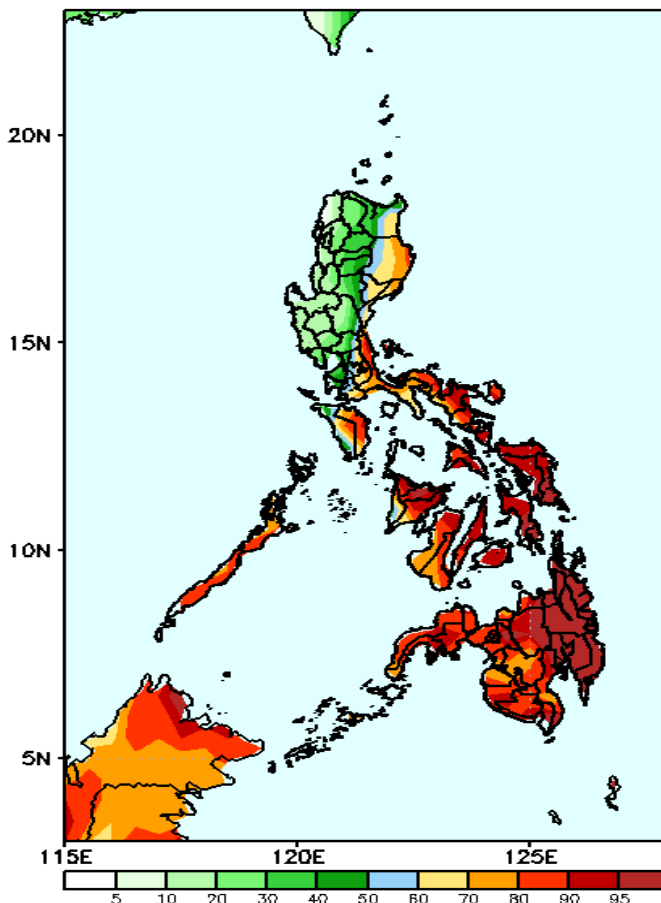
Week 2: Feb 25- Mar 03, 2022 2022

GEFS Week-2 Precip. Anomaly
Valid: 20220225 - 20220303



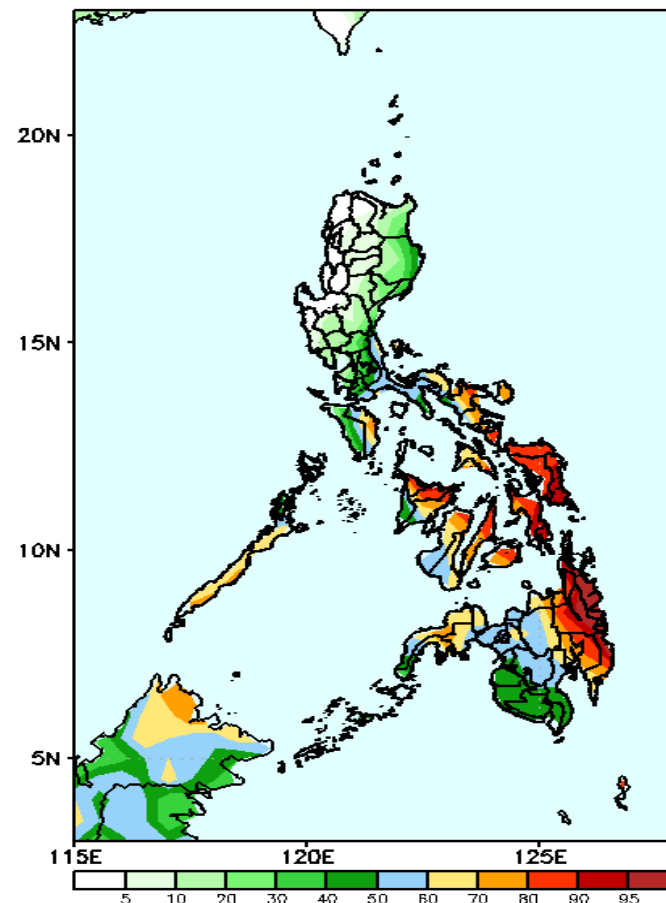
Increase of rainfall of 40-100mm is expected in most parts of Southern Luzon and in Visayas & Mindanao during the forecast period.

GEFS Week-2 Exceedance Prob. > 25mm
Valid: 20220225 - 20220303



High probability of rainfall to exceed 25mm in most part of eastern & southern Luzon, Visayas and Mindanao while less likely for the rest of Luzon during the forecast period.

GEFS Week-2 Exceedance Prob. > 50mm
Valid: 20220225 - 20220303



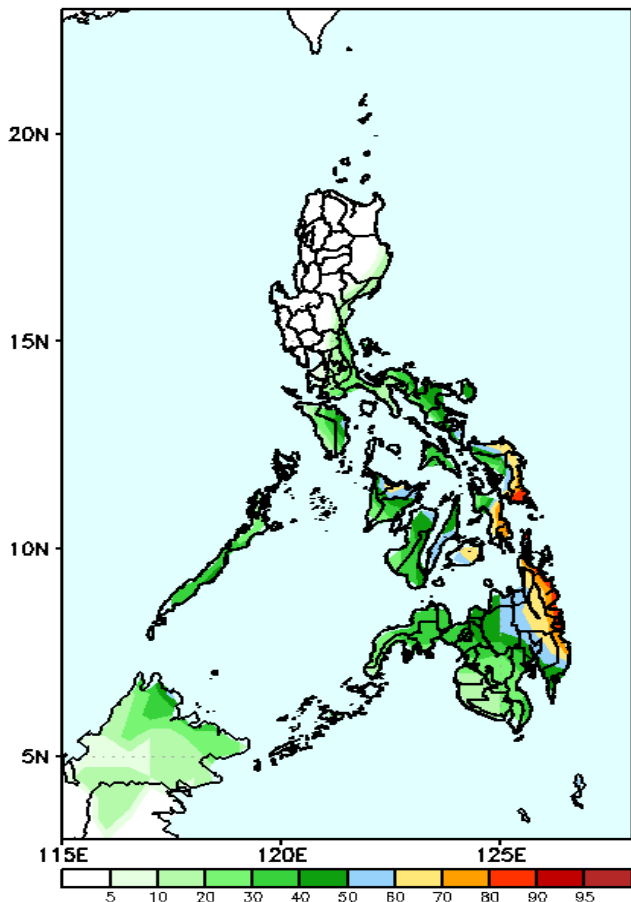
High probability of rainfall to exceed 50mm in most parts of Bicol Region, Visayas and eastern Mindanao while less likely for the rest of the country during the forecast period



Exceedance Probability > 100/150/200 mm

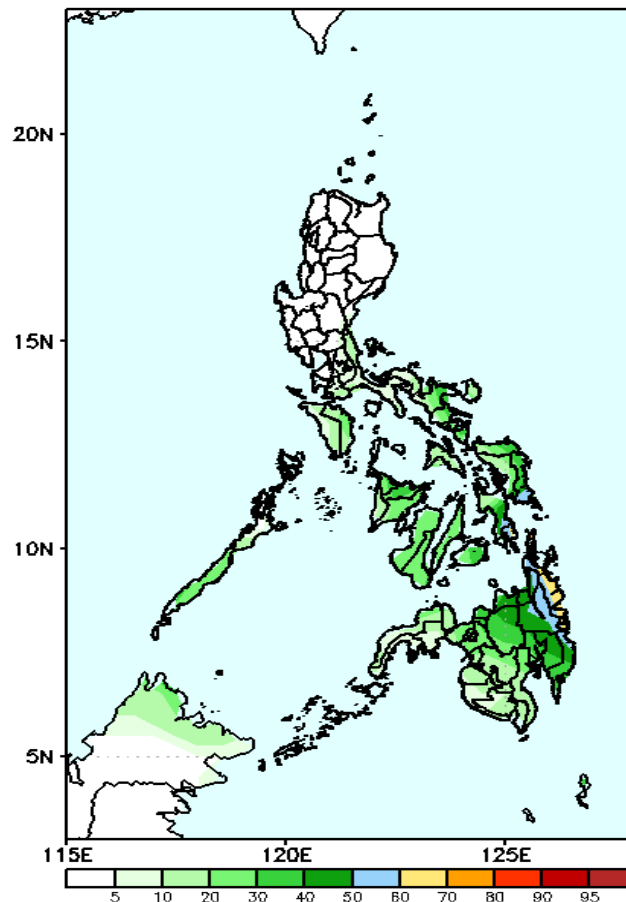
Week 2: Feb 23- Feb 25- Mar 03, 2022

GEFS Week-2 Exceedance Prob. > 100mm
Valid: 20220225 - 20220303



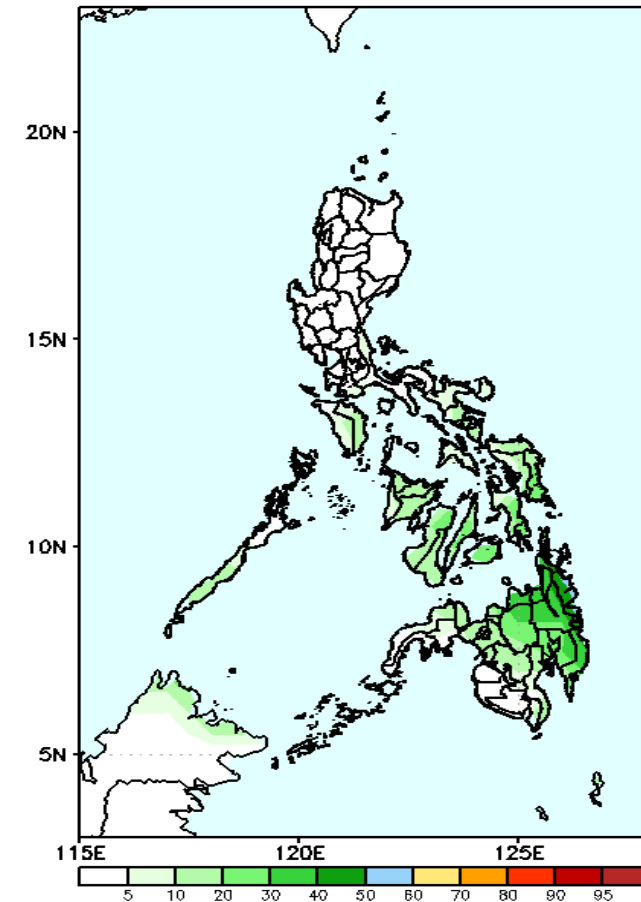
Low probability of rainfall to exceed 100mm in most parts of the country except in Eastern Samar, Southern Leyte, Bohol and eastern Mindanao where there is 60-90% chance during the forecast period.

GEFS Week-2 Exceedance Prob. > 150mm
Valid: 20220225 - 20220303



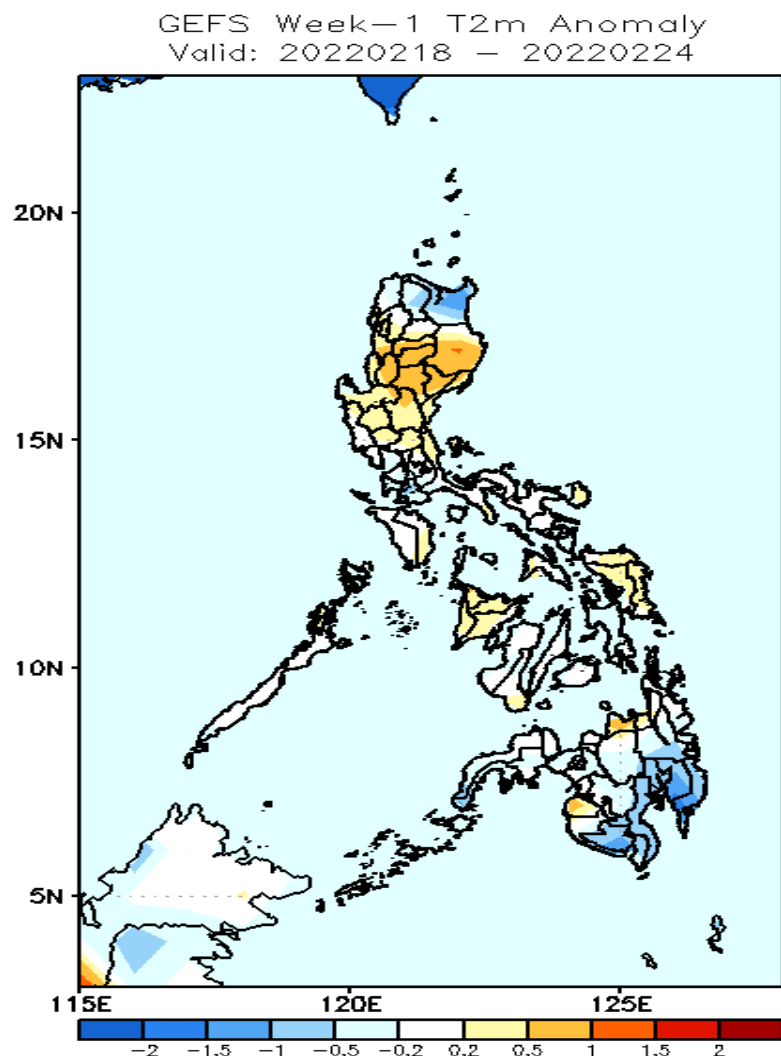
Low probability of rainfall to exceed 150mm in most parts of the country during the forecast period.

GEFS Week-2 Exceedance Prob. > 200mm
Valid: 20220225 - 20220303



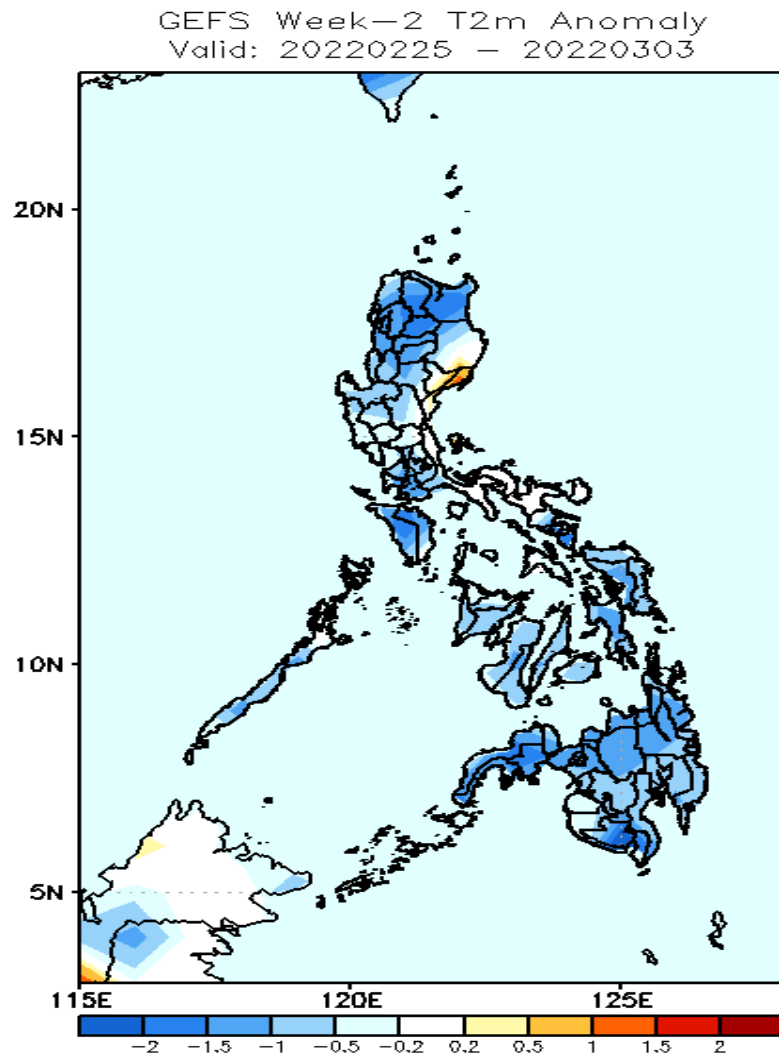
Low probability of rainfall to exceed 200mm in most parts of the country during the forecast period.

GEFS Week-1 & 2 Forecasts: T2m Anomaly



2m Temperature Week 1: Feb 18-24, 2022

Slightly warmer to warmer than average surface air temperature will likely experience in most parts of Luzon, average to slightly warmer in Visayas and northern Mindanao while cooler than average temperature in Cagayan and southern Mindanao during the forecast period.



2m Temperature Week 2: Feb 25- Mar 03, 2022

Cooler than average surface air temperature will likely experience in most parts of the country except in Aurora where warmer than average temperature is expected during the forecast period.