



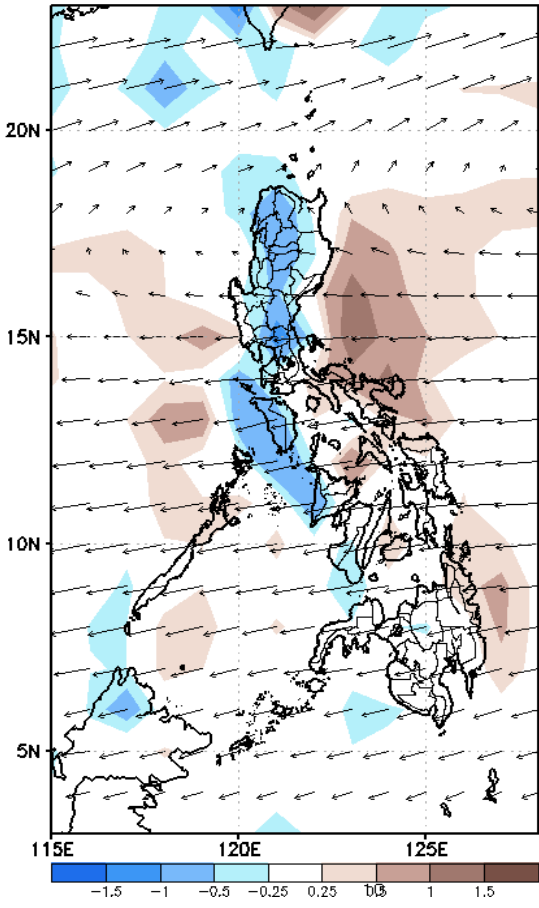
Week 1 & Week 2 Forecast for the Philippines using GEFS Model



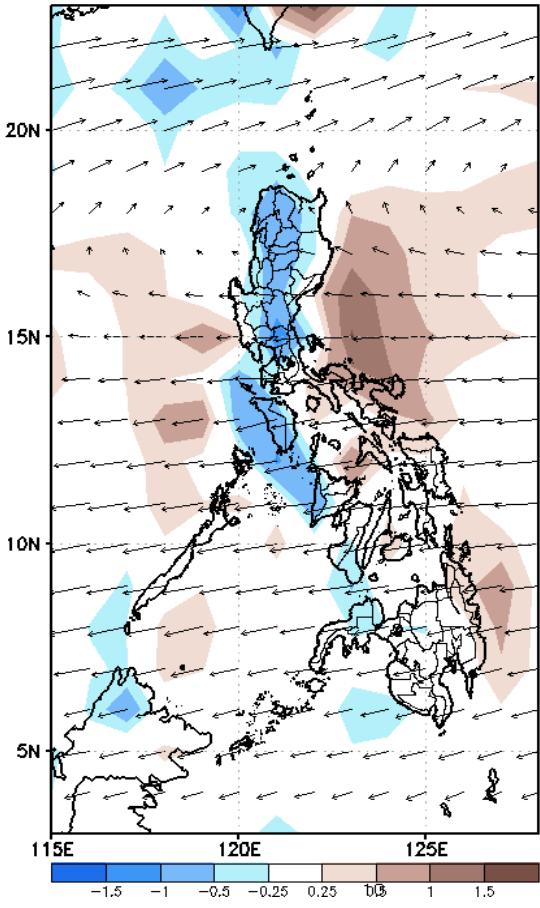
GEFS Week-1 Forecasts: Wind Anomaly Forecast

Week 1: Jan 18-24, 2023

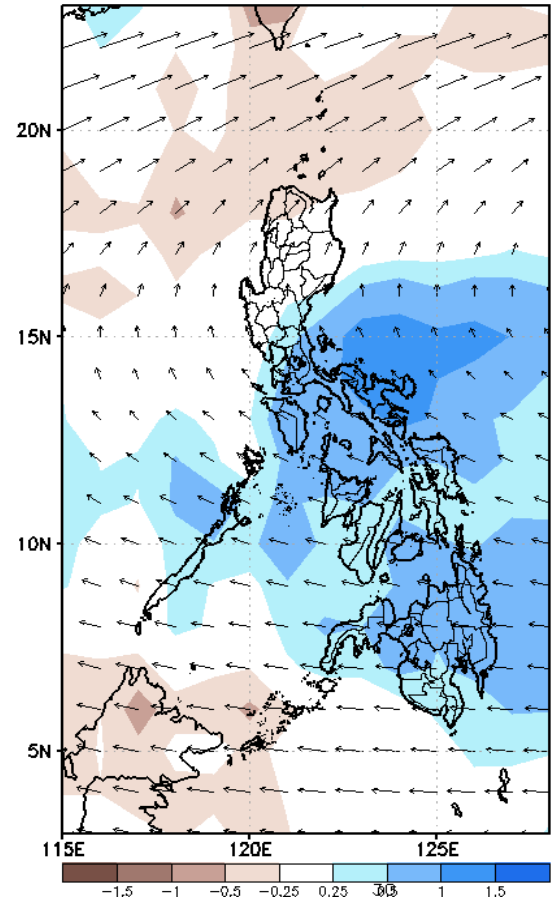
GEFS Week-1 850-hPa Divergence and Wind Anomaly
Valid: 20230118 - 20230124



GEFS Week-1 700-hPa Divergence and Wind Anomaly
Valid: 20230118 - 20230124



GEFS Week-1 200-hPa Divergence and Wind Anomaly
Valid: 20230118 - 20230124

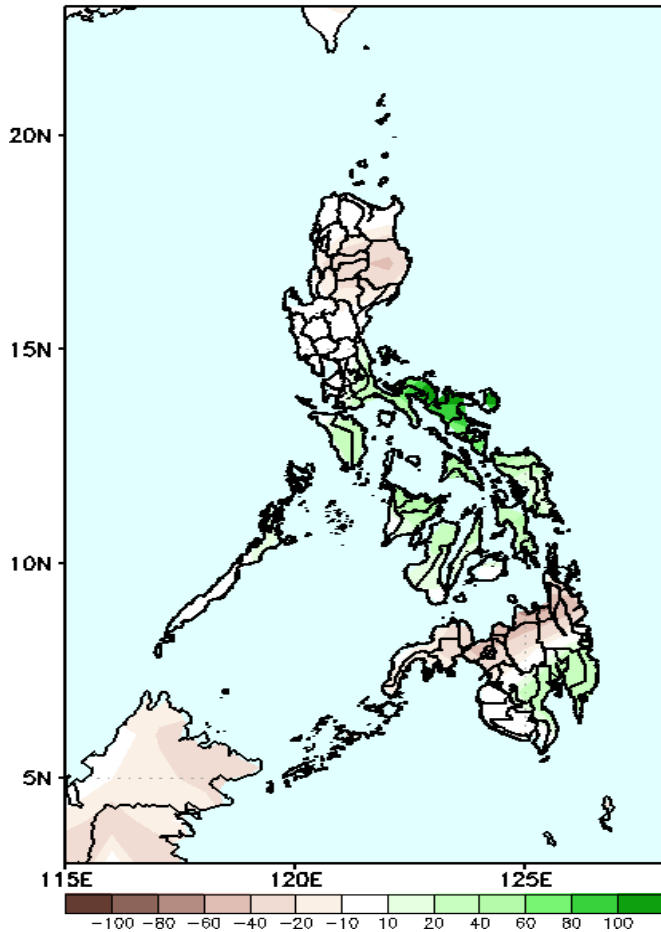


Northeast Monsoon is forecasted to affect most parts of eastern Luzon while Easterlies to affect Mindanao during the forecast period.

Precipitation Anomaly and Exceedance Probability > 25/50 mm

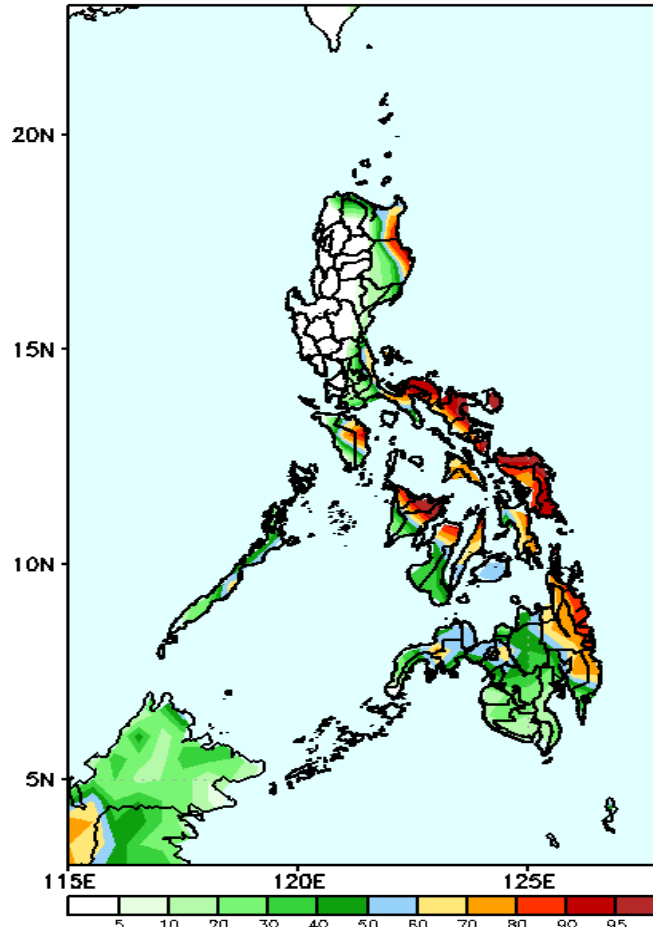
Week 1: Jan 18-24, 2023

GEFS Week-1 Precip Anomaly
Valid: 20230118 - 20230124



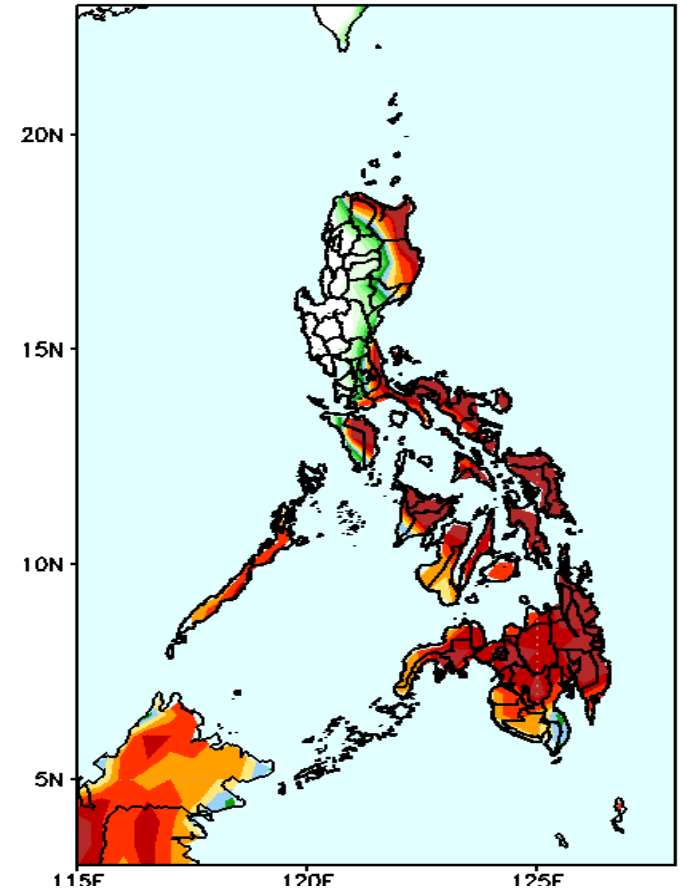
Increase of rainfall of more than 100mm in most parts of Bicol Region and 40 - 80mm in Quezon, most parts of Visayas and Davao region while 60-90mm rainfall deficit in Isabela, CAR, Central Luzon and the rest of Mindanao during the forecast period.

GEFS Week-1 Exceedance Prob. > 50mm
Valid: 20230118 - 20230124



Very high probability of rainfall to exceed 50mm in most parts of the country except most parts of CAR, Ilocos region, Central Luzon, NCR and Cavite during the forecast period.

GEFS Week-1 Exceedance Prob. > 25mm
Valid: 20230118 - 20230124

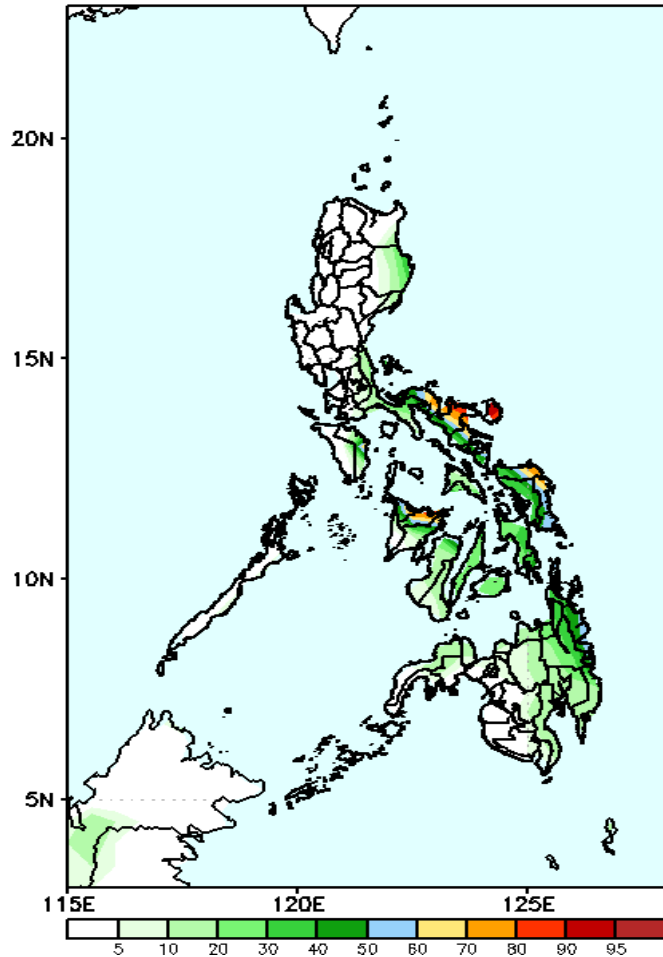


Very high probability of rainfall to exceed 25mm in the eastern section of Cagayan and Isabela, southern Quezon, most parts of Bicol region, Eastern and Central Visayas, northern portion of Western Visayas, some areas in Zamboanga peninsula and most parts of Eastern Mindanao while less likely for the rest of the country during the forecast period.

Exceedance Probability > 100/150/200 mm

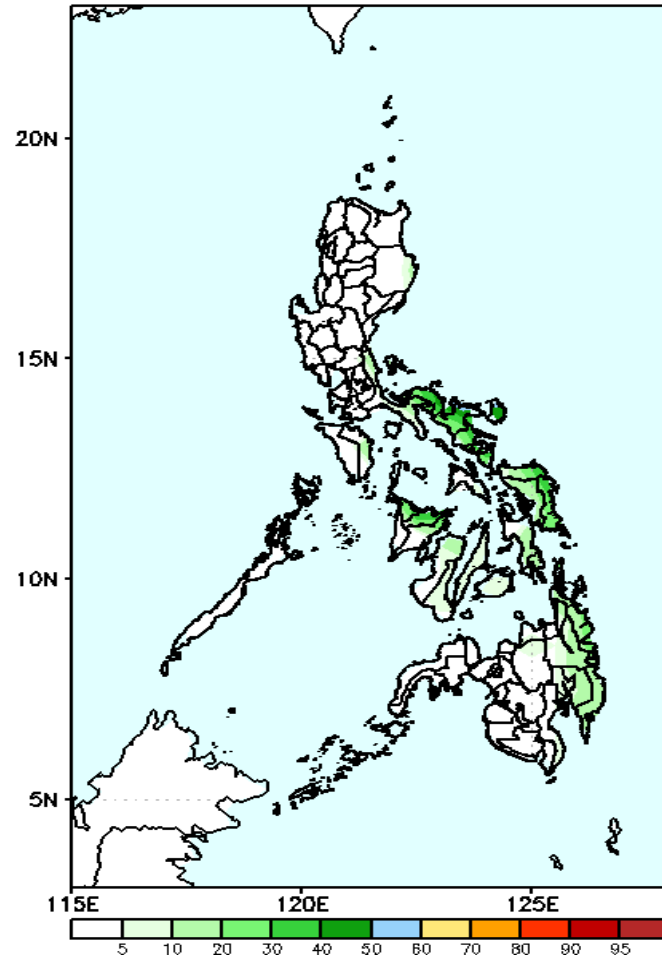
Week 1: Jan 18-24, 2023

GEFS Week-1 Exceedance Prob. > 100mm
Valid: 20230118 - 20230124



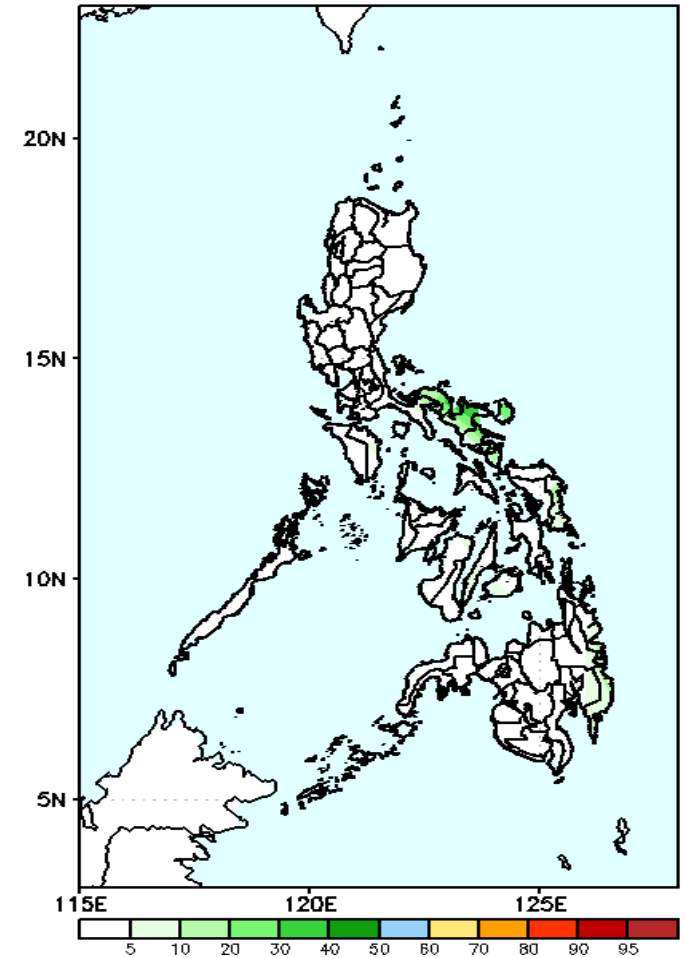
50 – 70% probability of rainfall to exceed 100mm in Catanduanes and some parts of Northern and Eastern Samar while less likely for the rest of the country during the forecast period.

GEFS Week-1 Exceedance Prob. > 150mm
Valid: 20230118 - 20230124



Low probability of rainfall to exceed 150mm in most parts of the country during the forecast period.

GEFS Week-1 Exceedance Prob. > 200mm
Valid: 20230118 - 20230124



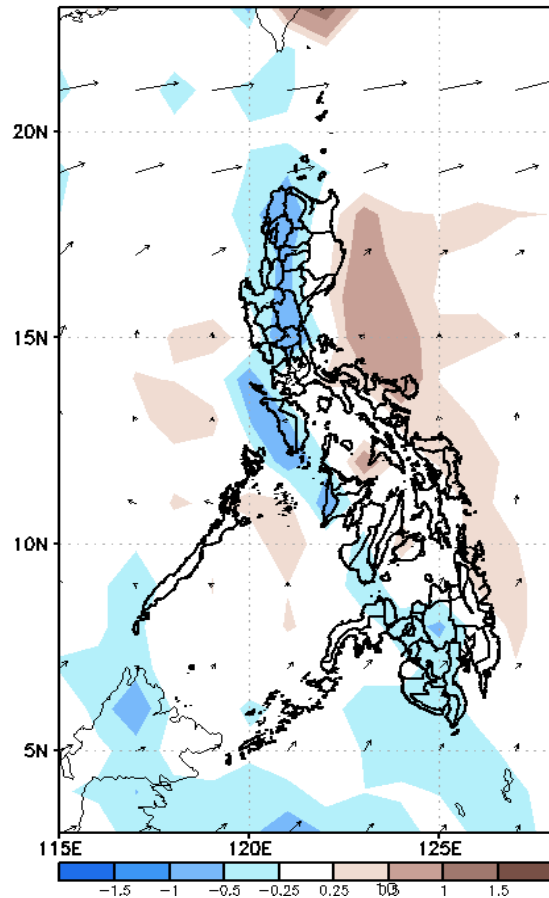
Low probability of rainfall to exceed 200mm in most parts of the country during the forecast period.



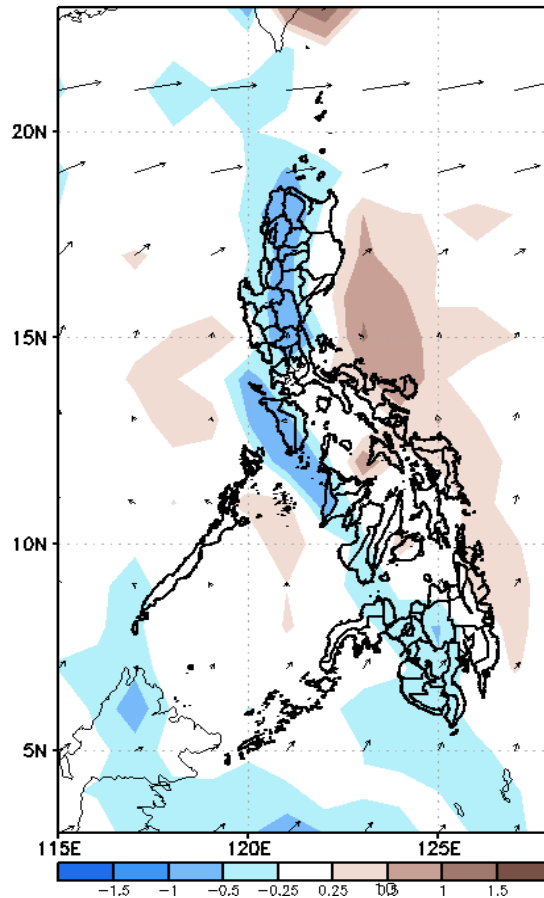
GEFS Week-2 Forecasts: Wind Anomaly Forecast

Week 2: Jan 25-31, 2023

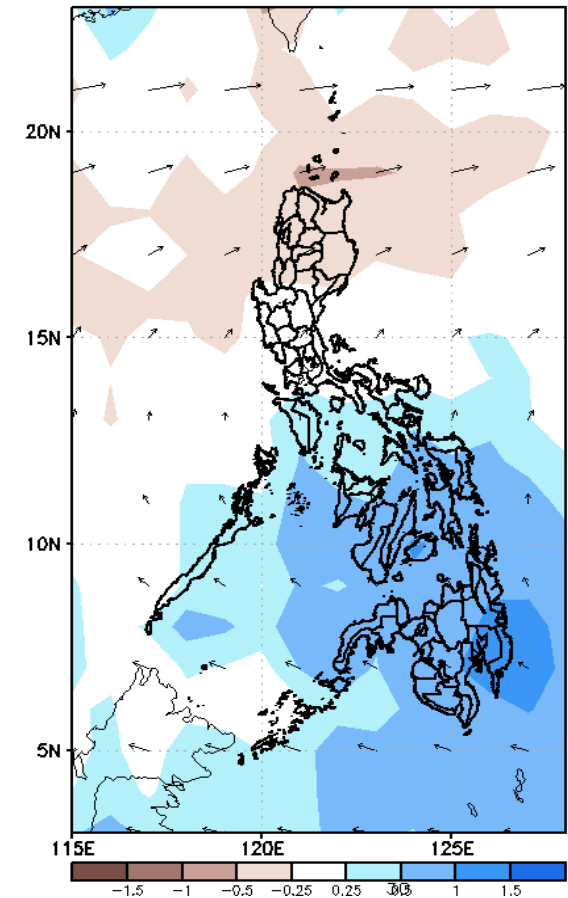
GEFS Week-2 850-hPa Divergence and Wind Anomaly
Valid: 20230125 - 20230131



GEFS Week-2 700-hPa Divergence and Wind Anomaly
Valid: 20230125 - 20230131



GEFS week-2 200-hPa Divergence and Wind Anomaly
Valid: 20230125 - 20230131



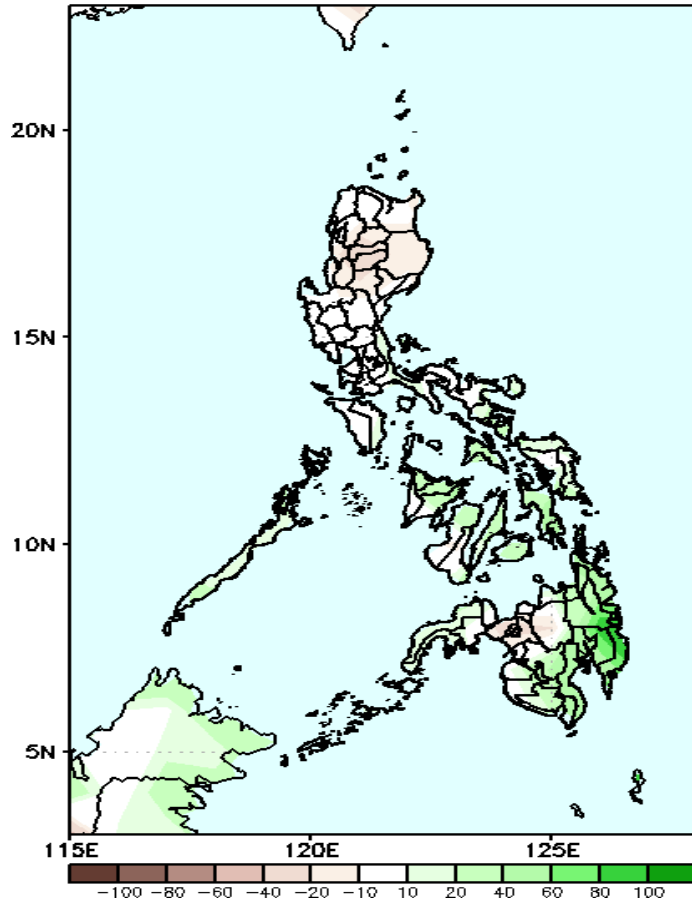
Northeast Monsoon is forecasted to affect most parts of Luzon and eastern Visayas while Easterlies is forecasted to affect Mindanao during the forecast period.



Precipitation Anomaly and Exceedance Probability > 25/50 mm

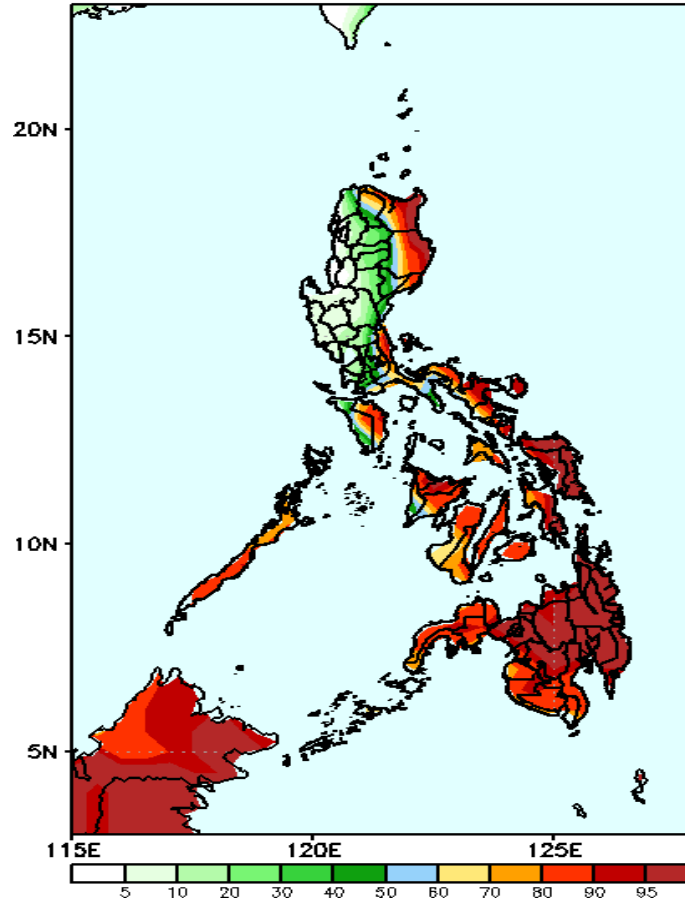
Week 2: Jan 25-31, 2023

GEFS Week-2 Precip Anomaly
Valid: 20230125 - 20230131



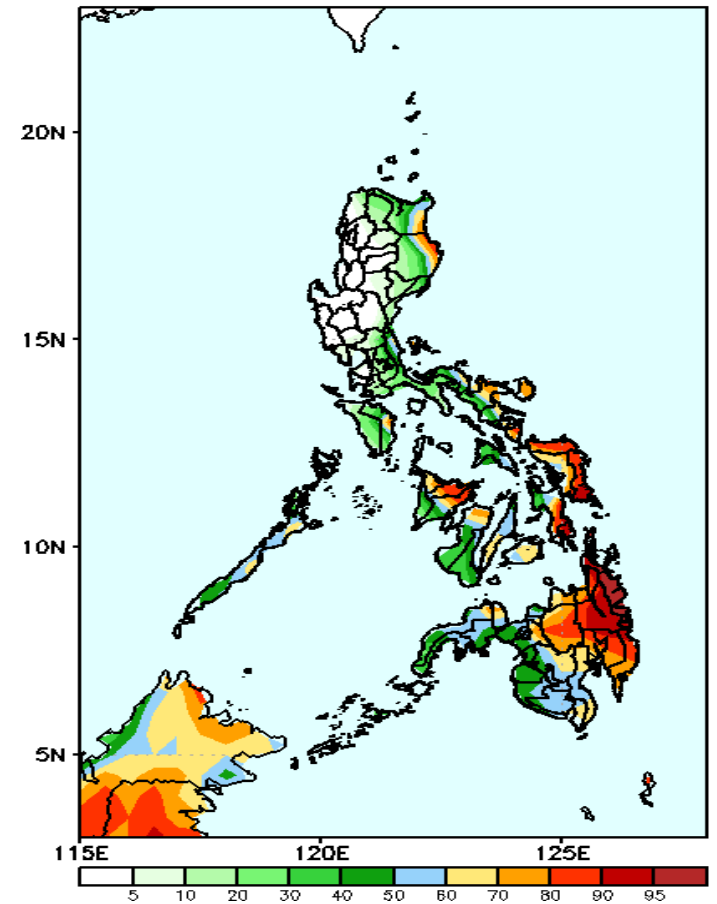
Increase of rainfall of 40 – 80mm is expected in Sorsogon, Palawan, most parts of Visayas and Mindanao while eastern Mindanao while 20-40mm rainfall deficit in most parts of Luzon, Bukidnon and Lanao provinces during the forecast period.

GEFS Week-2 Exceedance Prob. > 25mm
Valid: 20230125 - 20230131



Very high probability of rainfall to exceed 25mm in most parts of the country except most parts of CAR, Ilocos region, Central Luzon, NCR and Cavite during the forecast period.

GEFS Week-2 Exceedance Prob. > 50mm
Valid: 20230125 - 20230131

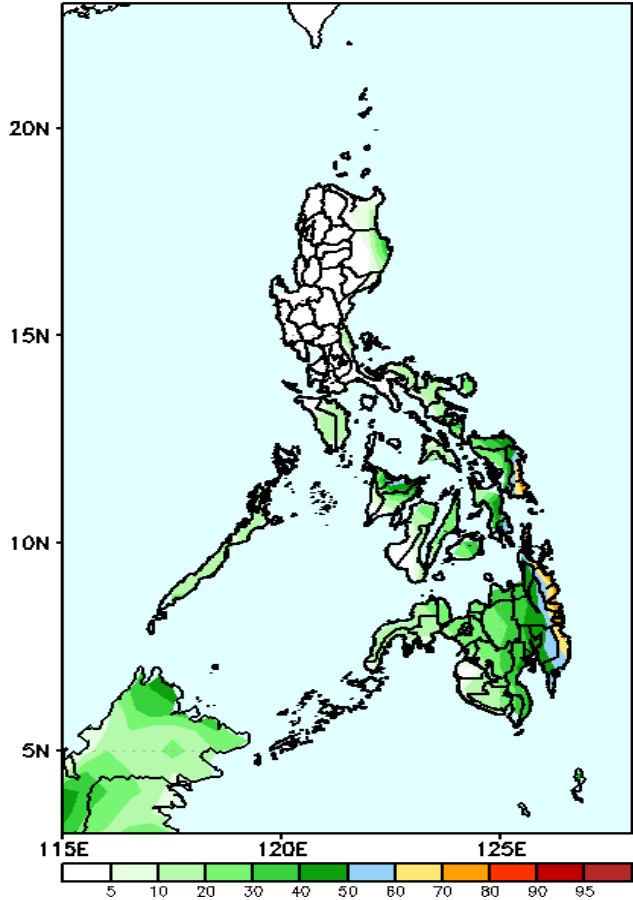


Very high probability of rainfall to exceed 50mm in the eastern section of Cagayan and Isabela, southern Quezon, most parts of Bicol region, Eastern and Central Visayas, northern portion of Western Visayas, some areas in Zamboanga peninsula and most parts of Eastern Mindanao while less likely for the rest of the country during the forecast period.

Exceedance Probability > 100/150/200 mm

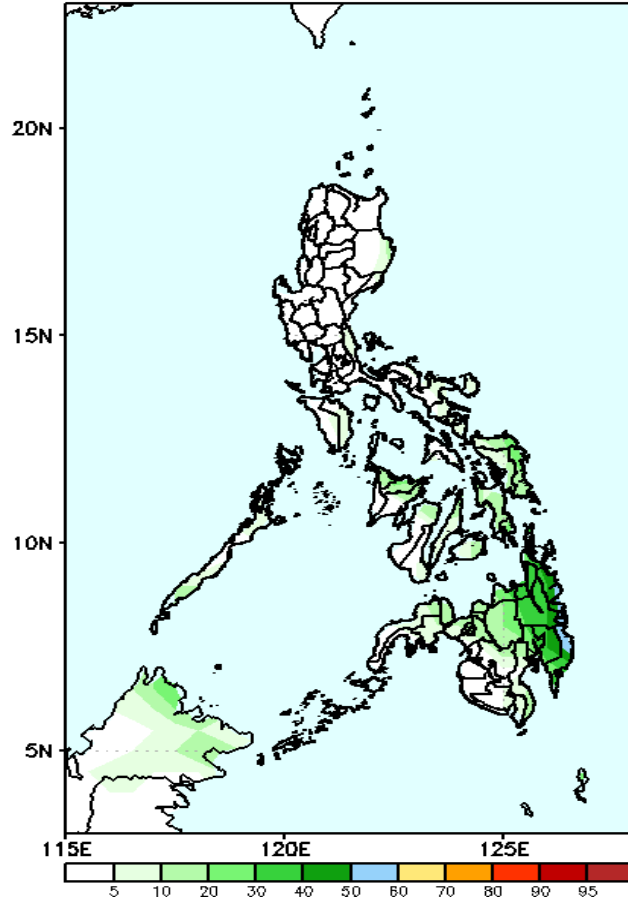
Week 2: Jan 25-31, 2023

GEFS Week-2 Exceedance Prob. > 100mm
Valid: 20230125 - 20230131



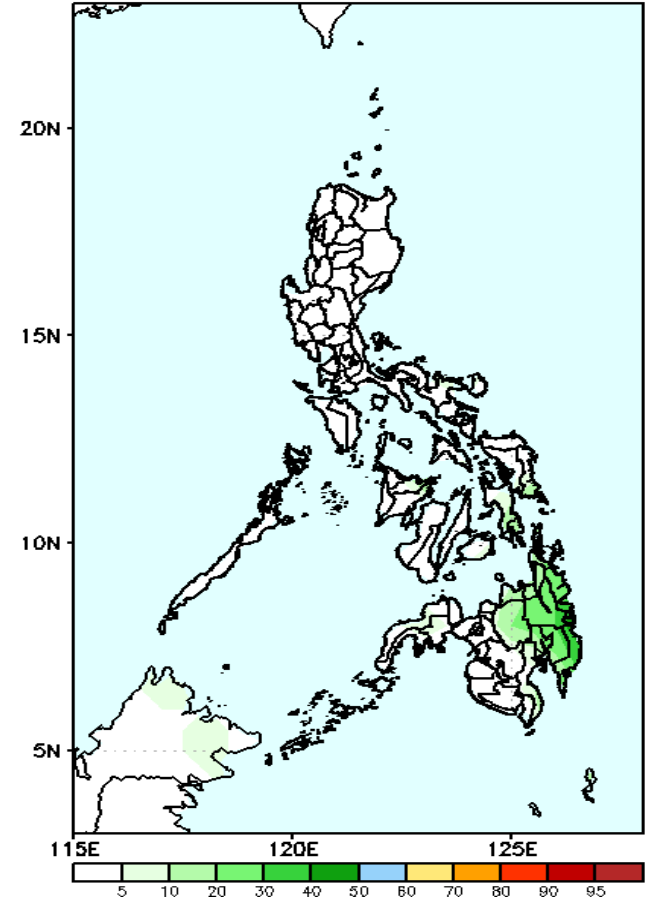
High probability of rainfall to exceed 100mm in some parts of Bicol region, Capiz and some areas in Northern and Eastern Samar while less likely for the rest of the country during the forecast period.

GEFS Week-2 Exceedance Prob. > 150mm
Valid: 20230125 - 20230131



Low probability of rainfall to exceed 150mm in most parts of the country during the forecast period.

GEFS Week-2 Exceedance Prob. > 200mm
Valid: 20230125 - 20230131

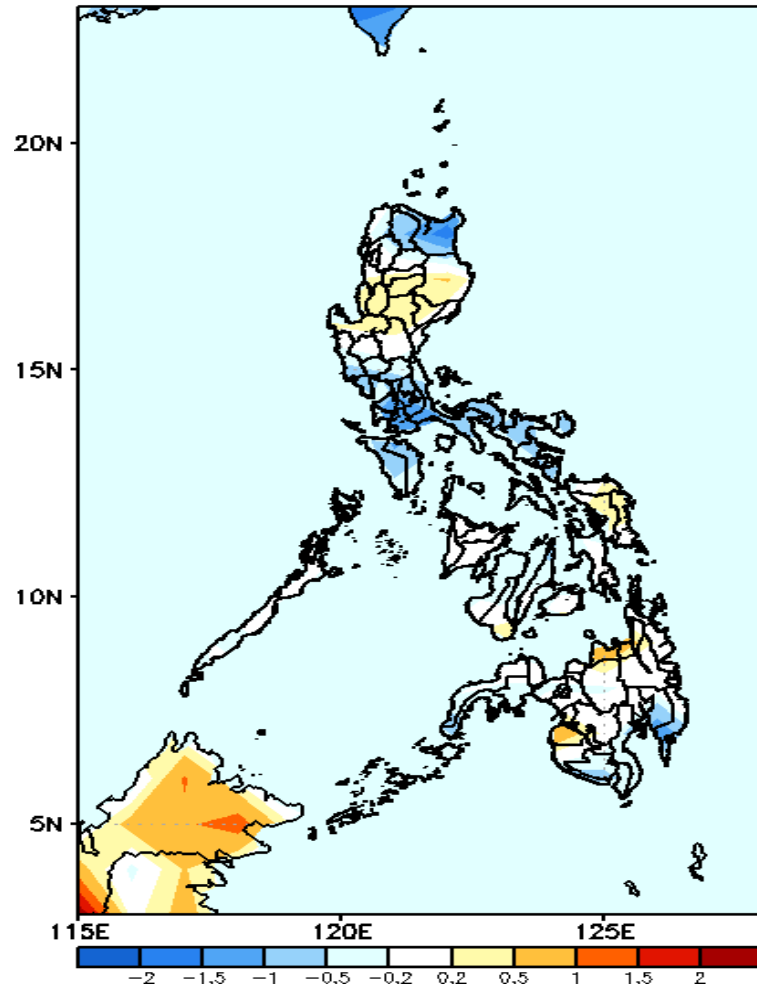


Low probability of rainfall to exceed 200mm in most parts of the country during the forecast period.



GEFS Week-1 & 2 Forecasts: T2m Anomaly

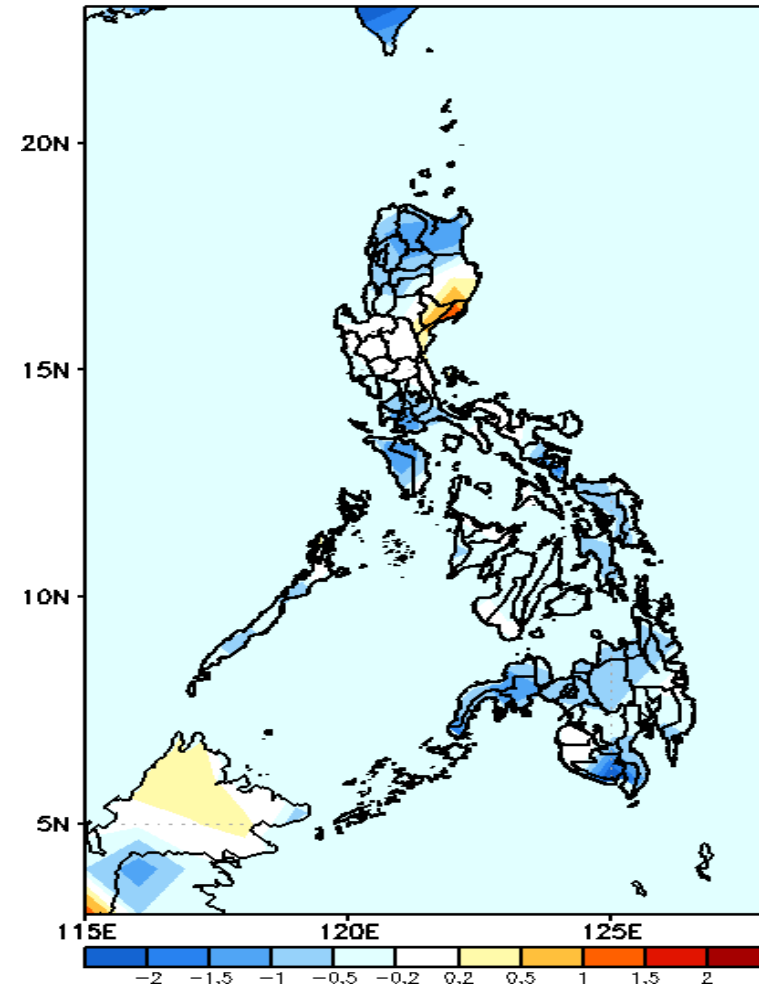
GEFS Week-1 T2m Anomaly
Valid: 20230118 - 20230124



2m Temperature Week 1: Jan 18-24, 2023

Slightly cooler to cooler than average surface air temperature will likely experience in Apayao, Cagayan, most parts of central & southern Luzon and Davao Region while average to warmer temperature is expected for the rest country during the forecast period.

GEFS Week-2 T2m Anomaly
Valid: 20230125 - 20230131



2m Temperature Week 2: Jan 25-31, 2023

Average to cooler than average surface air temperature will likely experience in most parts of the country except Aurora where slightly warmer to warmer temperature is expected during the forecast period.