



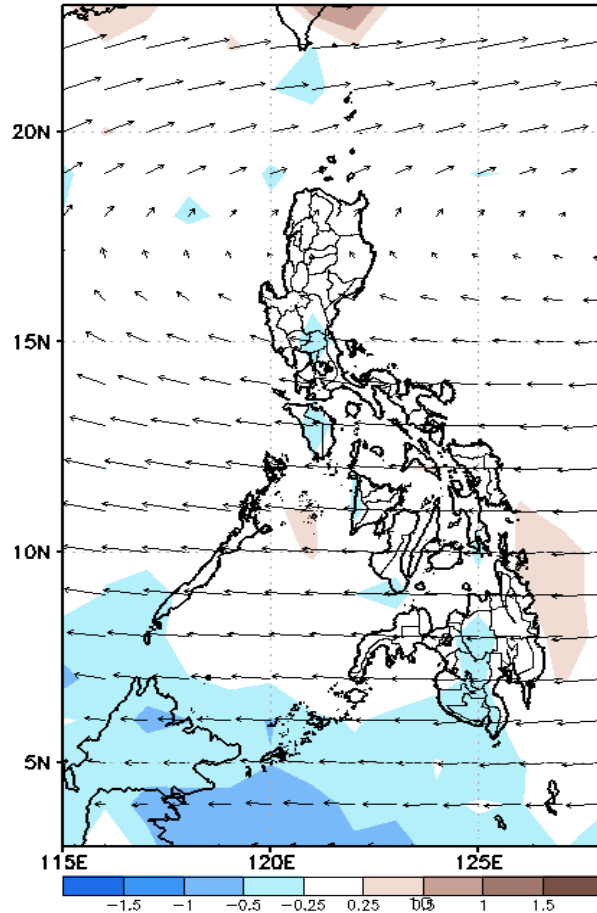
# Week 1 & Week 2 Forecast for the Philippines using GEFS Model



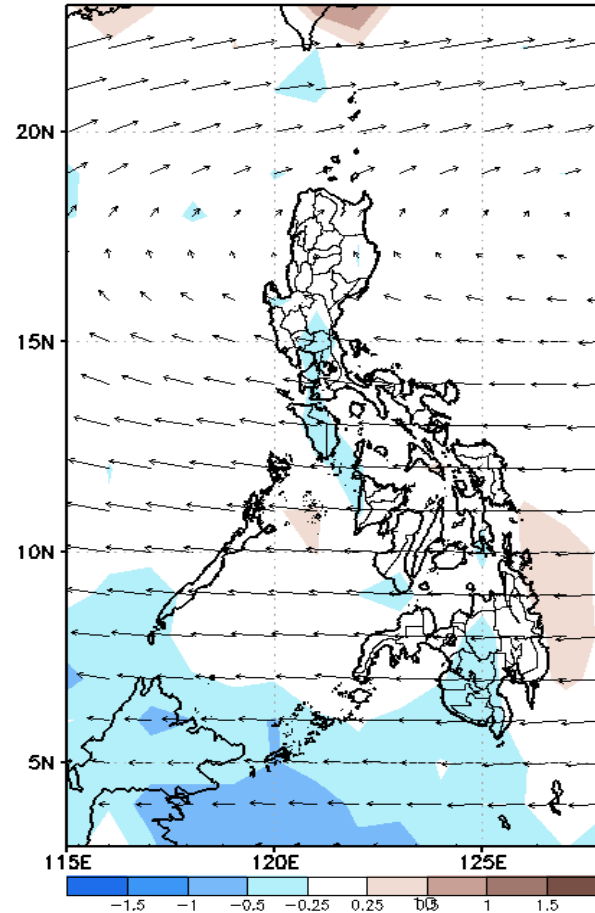
# GEFS Week-1 Forecasts: Divergence & Wind Anomaly

Week 1: Mar 18-24, 2022

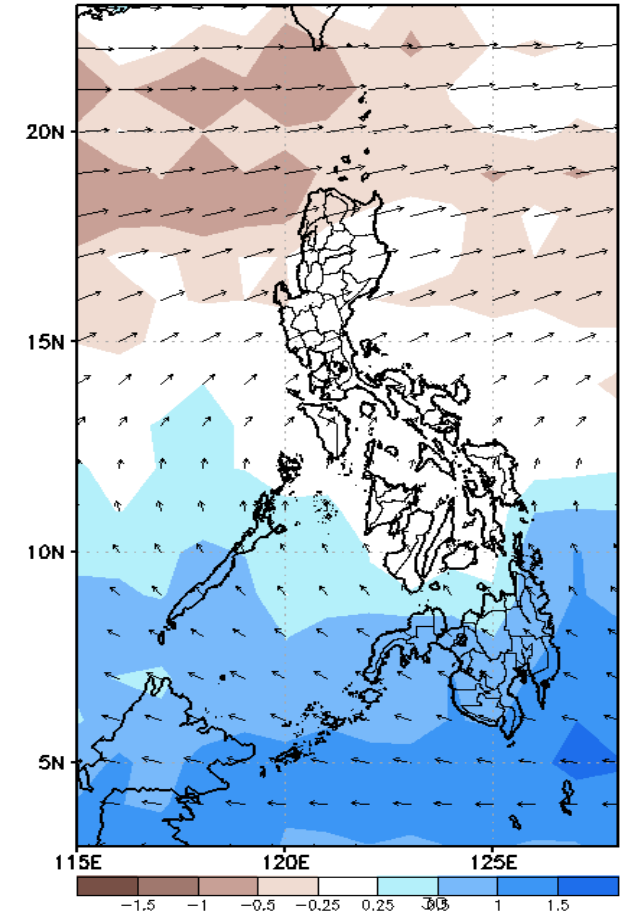
GEFS Week-1 850-hPa Divergence and Wind Anom  
Valid: 20220318 - 20220324



GEFS Week-1 700-hPa Divergence and Wind Anom  
Valid: 20220318 - 20220324



GEFS Week-1 200-hPa Divergence and Wind Anomaly  
Valid: 20220318 - 20220324

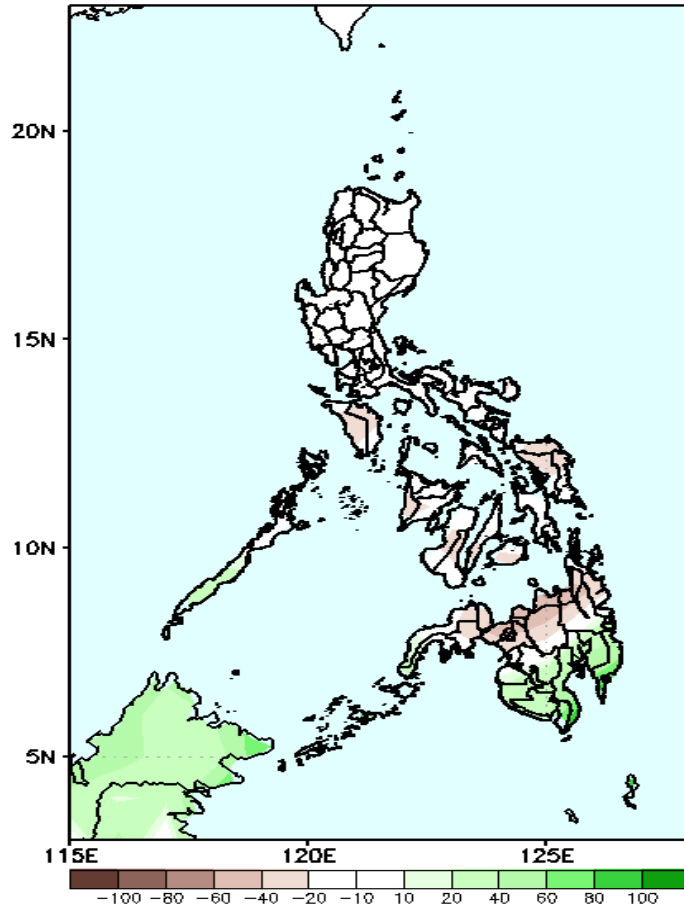


Upper and low level Divergence suggest a likelihood of light to moderate precipitation in Palawan and most parts of Mindanao. Easterlies affecting most parts of the country attributing to warmer temperatures during the forecast period.

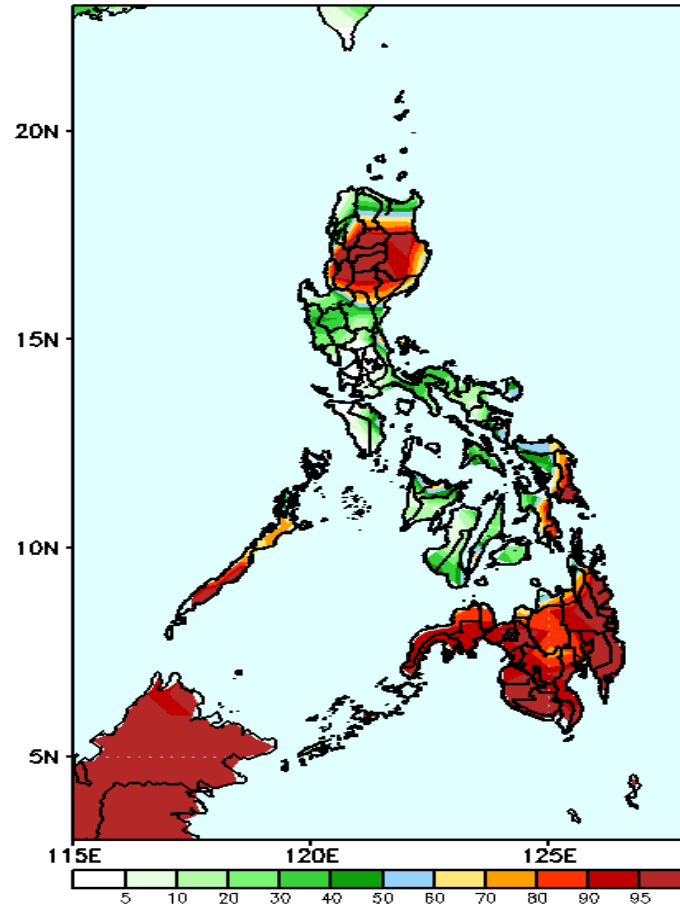
# Precipitation Anomaly and Exceedance Probability > 25/50 mm

**Week 1: Mar 18-24, 2022**

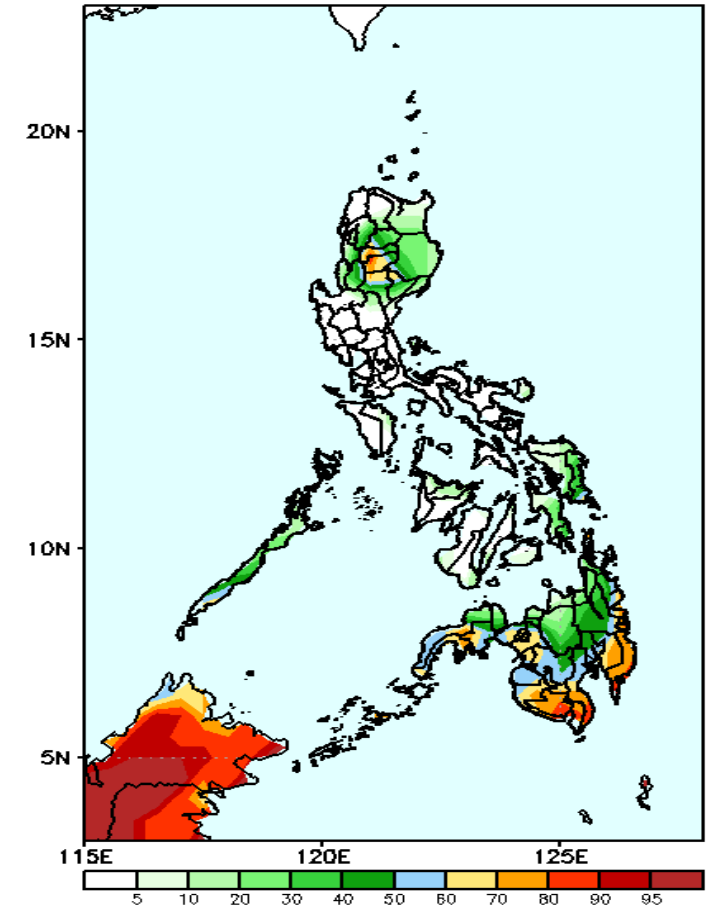
GEFS Week-1 Precip Anomaly  
Valid: 20220318 - 20220324



GEFS Week-1 Exceedance Prob. > 25mm  
Valid: 20220318 - 20220324



GEFS Week-1 Exceedance Prob. > 50mm  
Valid: 20220318 - 20220324



Rainfall deficit of 20-60mm is expected in most parts of the country except in Southern Mindanao with 40-85mm increase of rainfall during the forecast period.

High probability of rainfall to exceed 25mm in most parts of Ilocos Sur, La Union, Cordillera Region, Cagayan Valley, Palawan, Eastern Samar, Southern Leyte and most parts of Mindanao while less likely for the rest of the country during the forecast period.

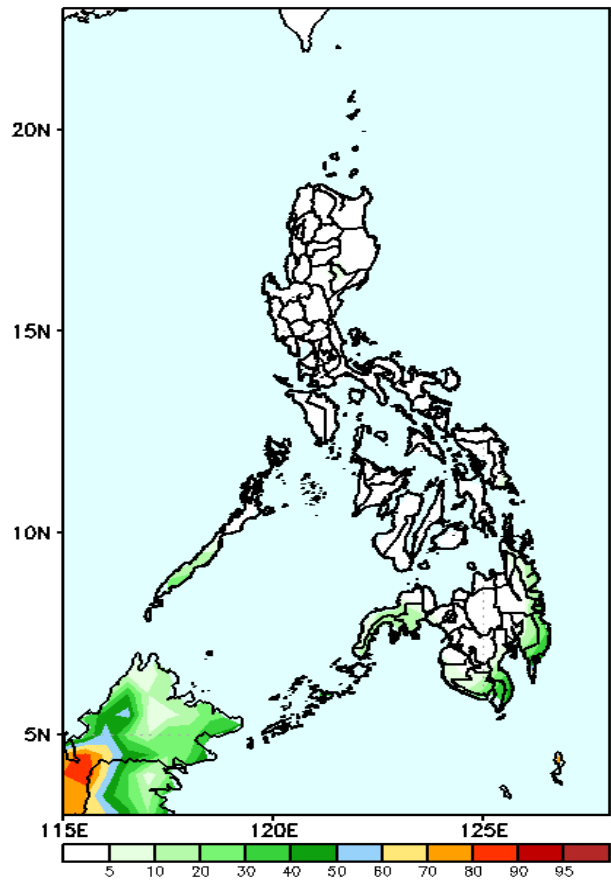
50-85% probability of rainfall to exceed 50mm in most parts of Cagayan Valley and most parts of Mindanao while less likely for the rest of the country during the forecast period.



# Exceedance Probability > 100/150/200 mm

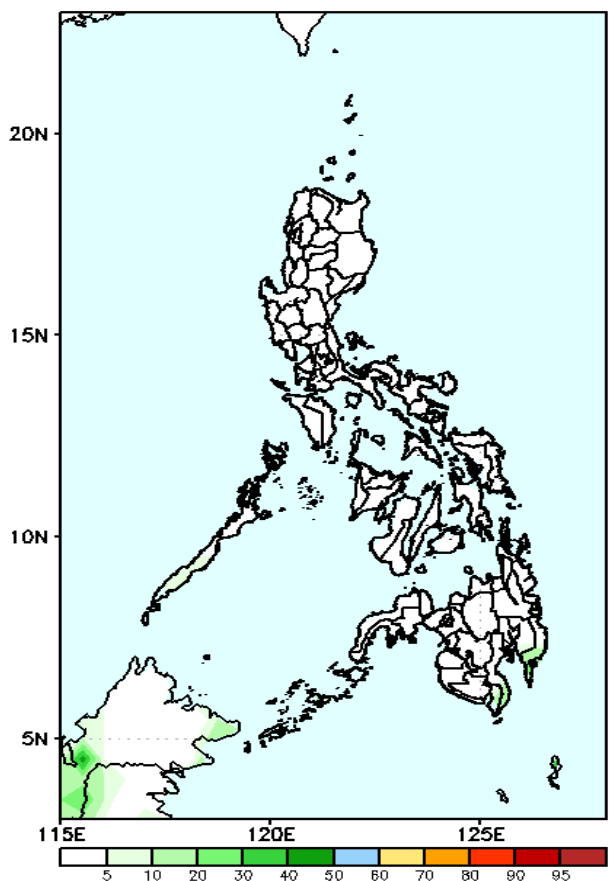
Week 1: Mar 18-24, 2022

GEFS Week-1 Exceedance Prob. > 100mm  
Valid: 20220318 – 20220324



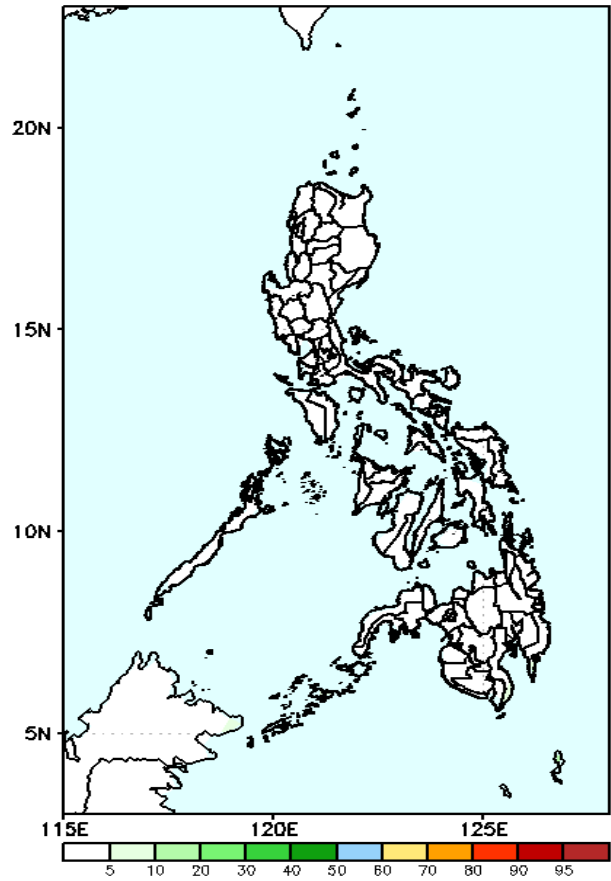
Low probability of rainfall to exceed 100mm in most parts of the country during the forecast period.

GEFS Week-1 Exceedance Prob. > 150mm  
Valid: 20220318 – 20220324



Low probability of rainfall to exceed 150mm in most parts of the country during the forecast period.

GEFS Week-1 Exceedance Prob. > 200mm  
Valid: 20220318 – 20220324



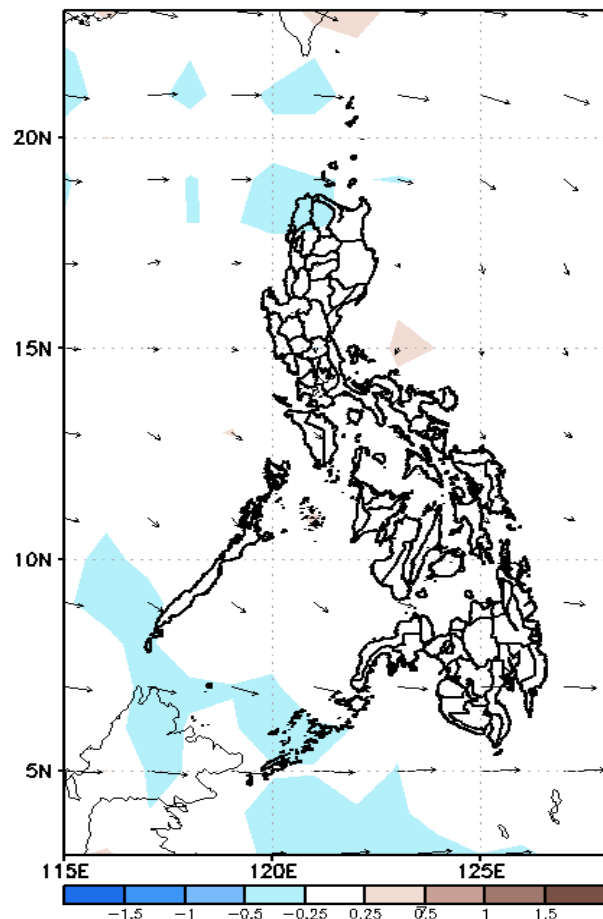
Low probability of rainfall to exceed 200mm in most parts of the country during the forecast period.



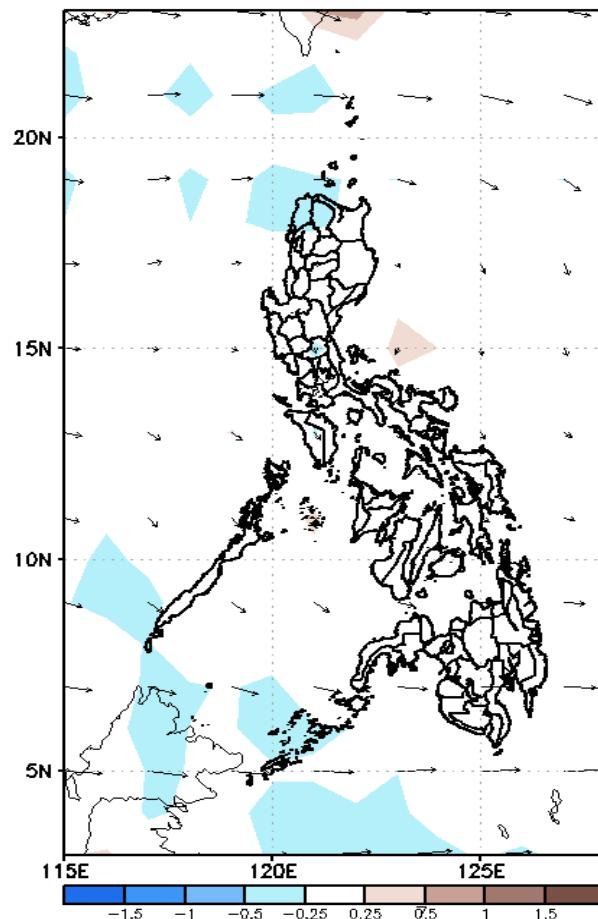
# GEFS Week-2 Forecasts: Divergence & Wind Anomaly

## Week 2: Mar 25-31, 2022

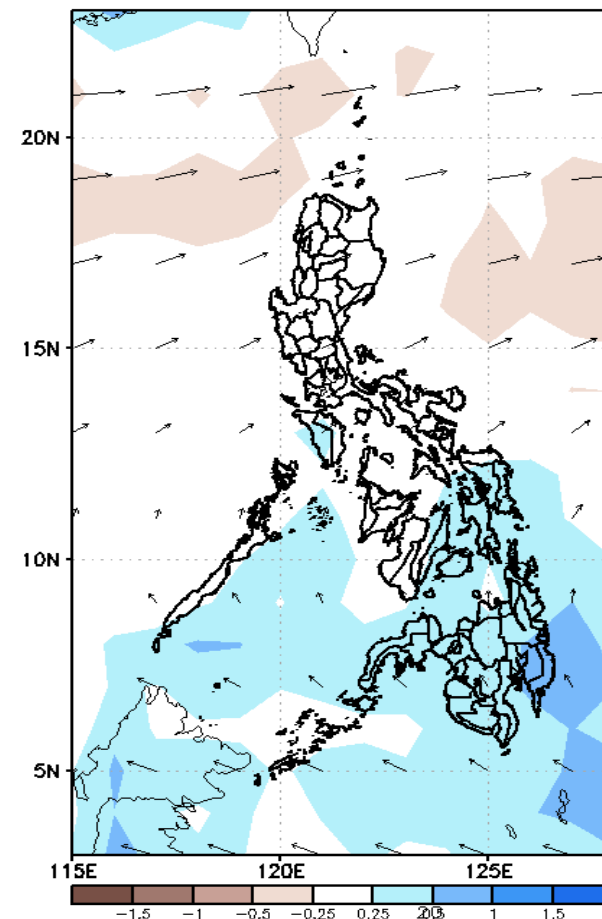
GEFS Week-2 850-hPa Divergence and Wind Anom.  
Valid: 20220325 - 20220331



GEFS Week-2 700-hPa Divergence and Wind Anom.  
Valid: 20220325 - 20220331



GEFS week-2 200-hPa Divergence and Wind Anom.  
Valid: 20220325 - 20220331

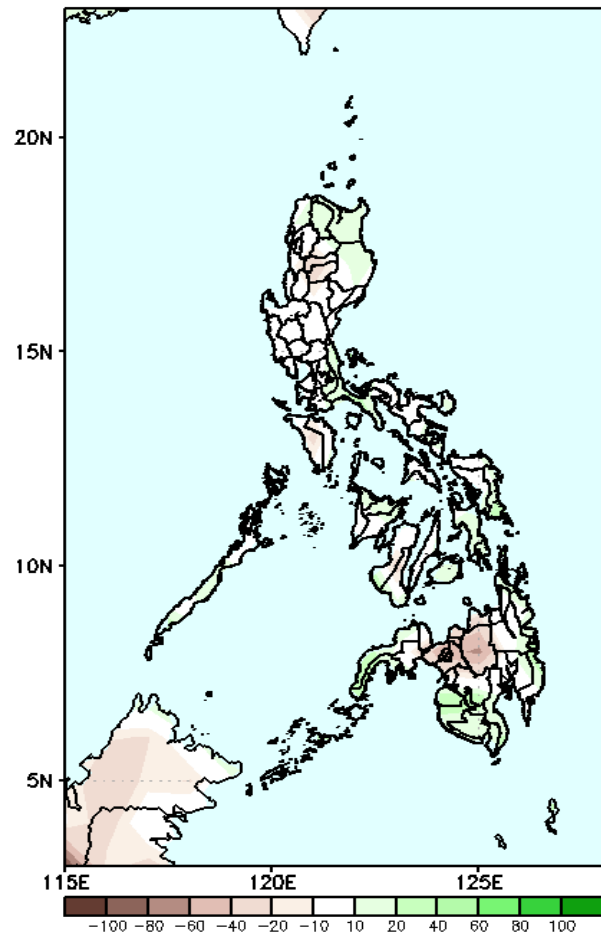


Upper and low level Divergence suggest a likelihood of light precipitation in Mindoro Occidental, most parts of Eastern and Central Visayas and most parts of Mindanao. Easterlies affecting most parts of the country attributing to warmer temperatures during the forecast period.

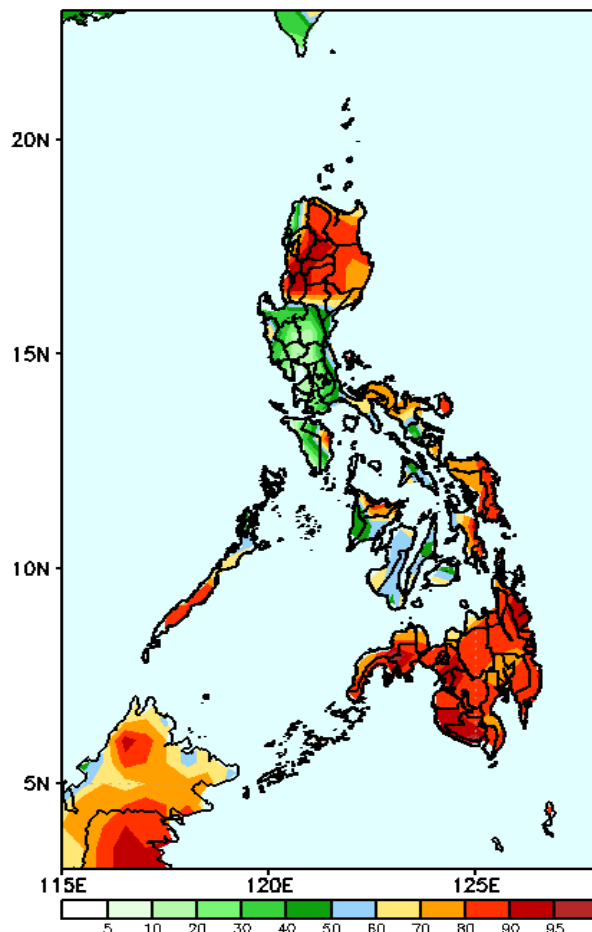
# Precipitation Anomaly and Exceedance Probability > 25/50 mm

**Week 2: Mar 25-31, 2022**

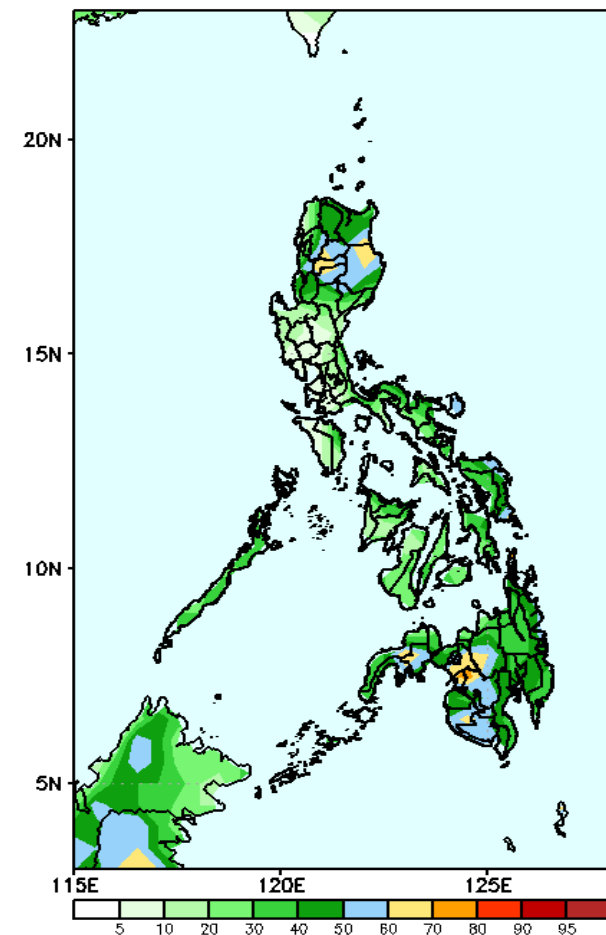
GEFS Week-2 Precip Anomaly  
Valid: 20220325 - 20220331



GEFS Week-2 Exceedance Prob. > 25mm  
Valid: 20220325 - 20220331



GEFS Week-2 Exceedance Prob. > 50mm  
Valid: 20220325 - 20220331



Rainfall deficit of 20-50mm is expected in most parts of Visayas and up to 80mm in Northern Mindanao during the forecast period.

High probability of rainfall to exceed 25mm in most parts of Ilocos & Cordillera Region, Cagayan Valley, Palawan, parts of Quezon, Camarines Norte & Sur, Catanduanes, Eastern Visayas, Southern Leyte, Capiz and most parts of Mindanao while less likely for the rest of the country during the forecast period.

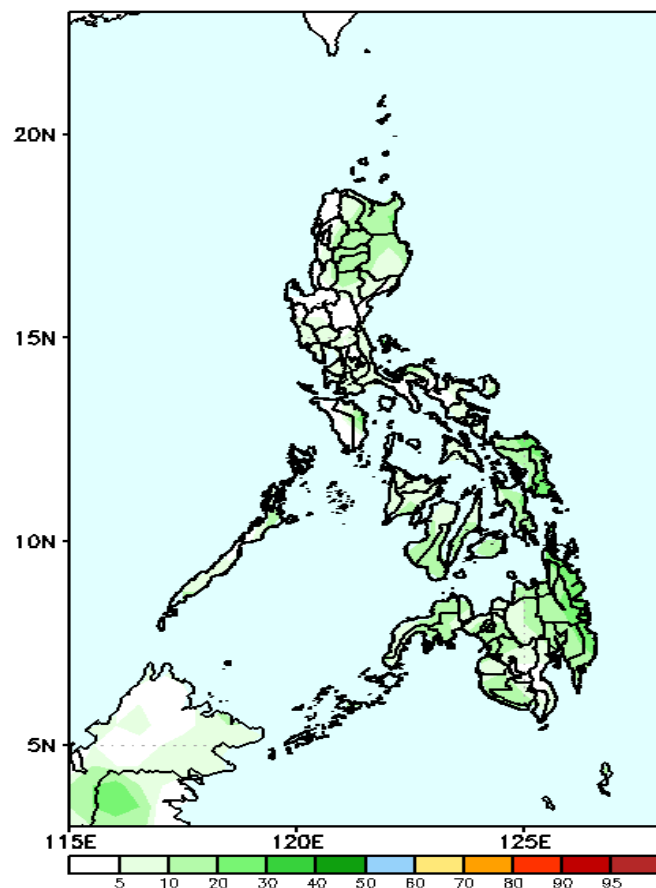
50-70% probability of rainfall to exceed 50mm in most parts of the country during the forecast period



# Exceedance Probability > 100/150/200 mm

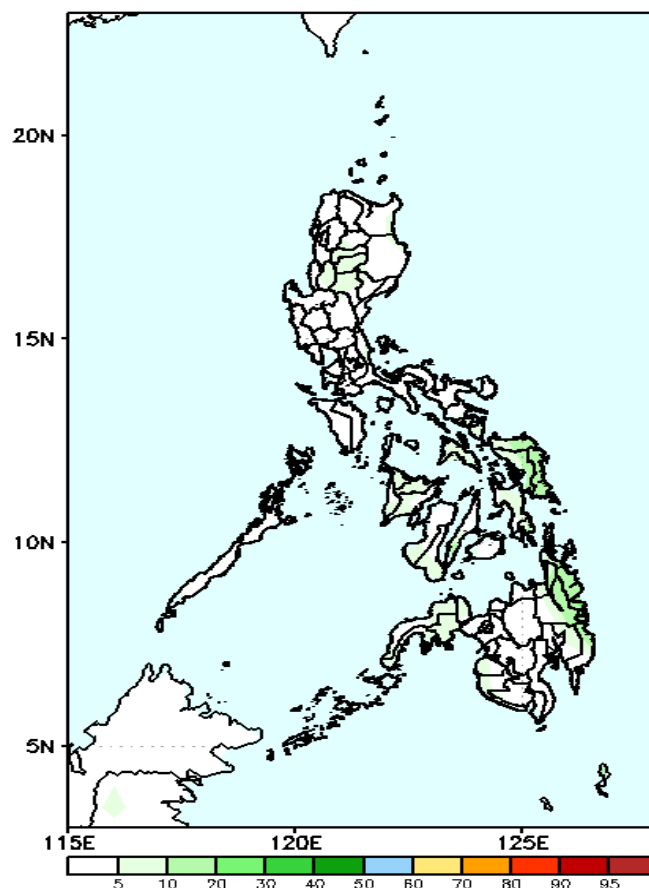
**Week 2: Mar 25-31, 2022**

GEFS Week-2 Exceedance Prob. > 100mm  
Valid: 20220325 - 20220331



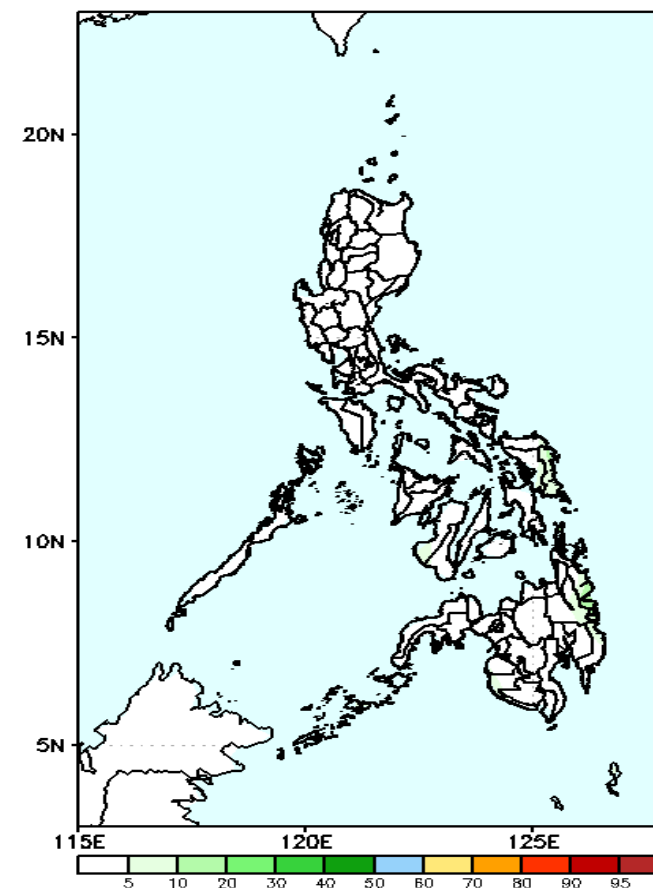
Low probability of rainfall to exceed 100mm in most parts of the country during the forecast period.

GEFS Week-2 Exceedance Prob. > 150mm  
Valid: 20220325 - 20220331



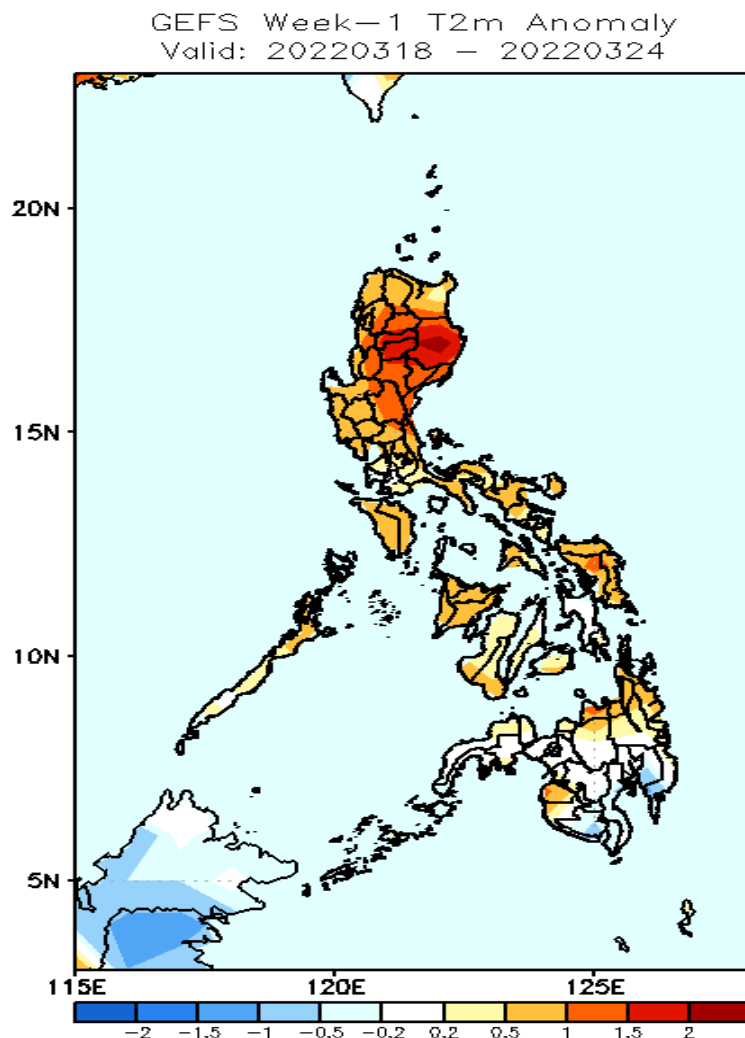
Low probability of rainfall to exceed 150mm in most parts of the country during the forecast period.

GEFS Week-2 Exceedance Prob. > 200mm  
Valid: 20220325 - 20220331



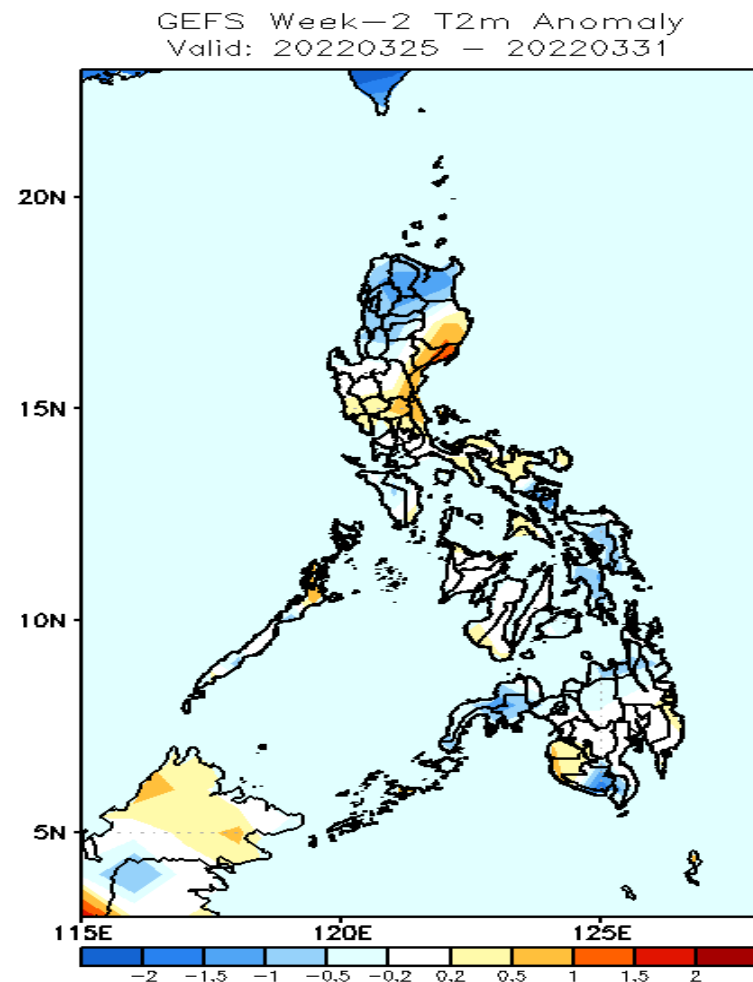
Low probability of rainfall to exceed 200mm in most parts of the country during the forecast period.

# GEFS Week-1 & 2 Forecasts: T2m Anomaly



## 2m Temperature Week 1: Mar 18-24, 2022

Warmer than average surface air temperature will likely experience in most parts of Luzon while average to slightly warmer temperature in Visayas and Mindanao during the forecast period.



## 2m Temperature Week 2: Mar 25-31, 2022

Average to slightly cooler than average surface air temperature will likely experience in most parts of Visayas & Mindanao & cooler than average in Northern Luzon while slightly warmer to warmer temperature is expected in eastern Luzon during the forecast period.