



Week 1 & Week 2 Forecast for the Philippines using GEFS Model



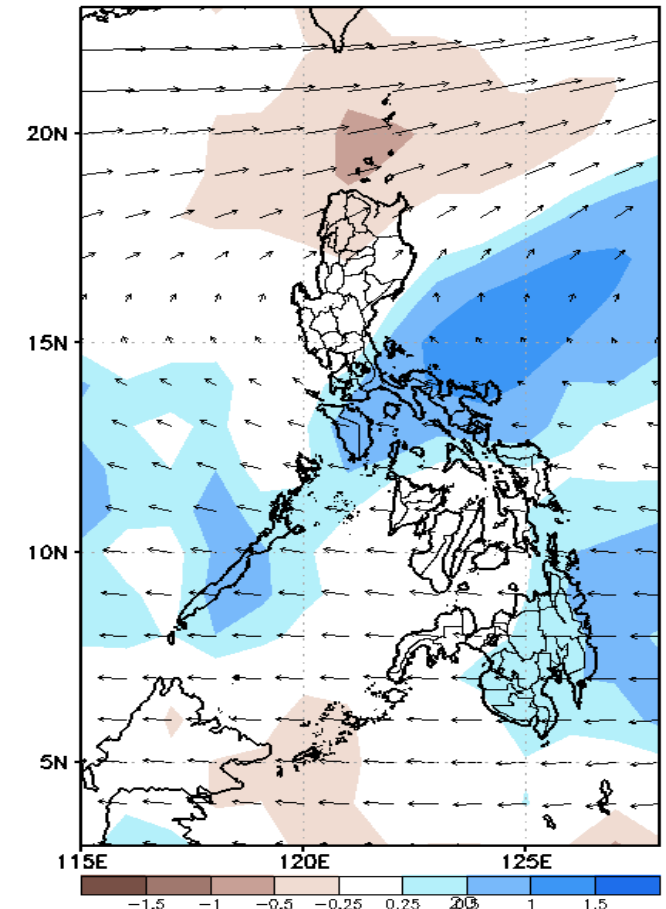
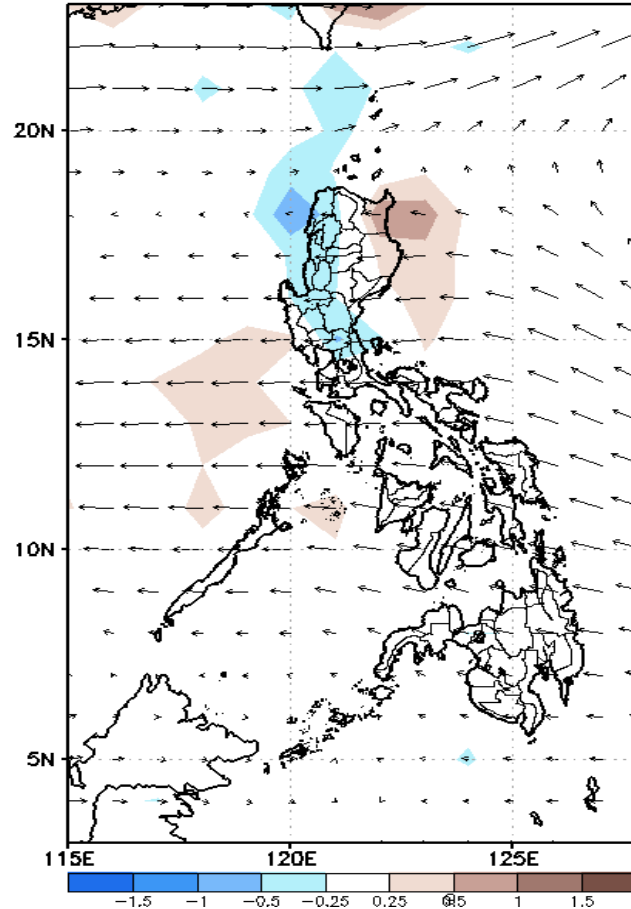
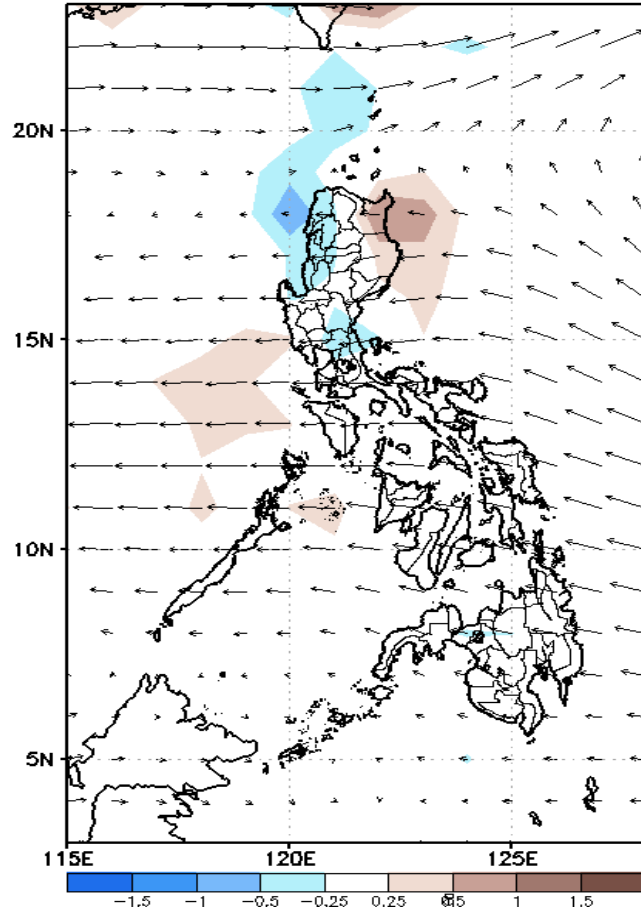
GEFS Week-1 Forecasts: Divergence & Wind Anomaly

Week 1: Nov 18-24, 2021

GEFS Week-1 850-hPa Divergence and Wind Anom
Valid: 20211118 - 20211124

GEFS Week-1 700-hPa Divergence and Wind Anom
Valid: 20211118 - 20211124

GEFS Week-1 200-hPa Divergence and Wind Anom
Valid: 20211118 - 20211124

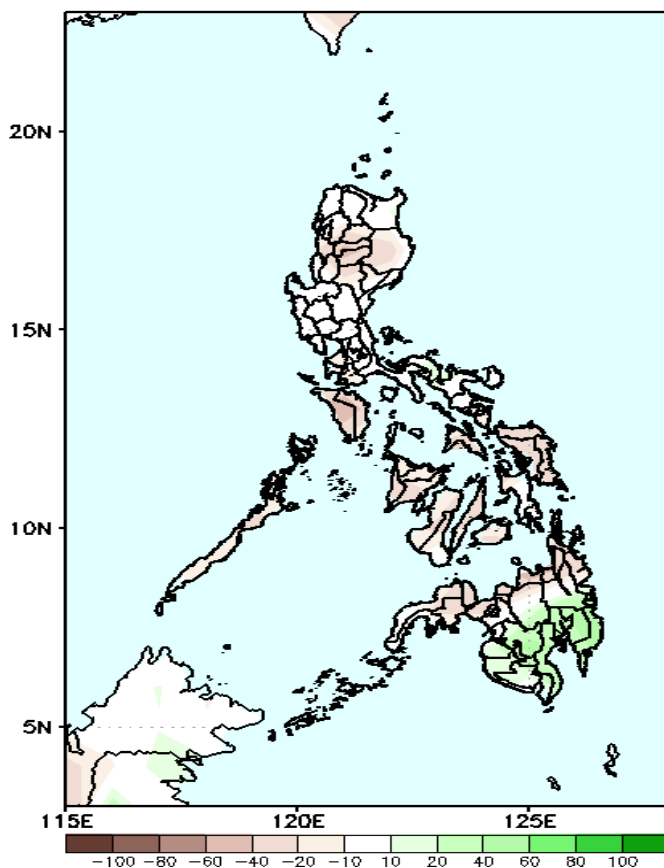


Upper and low level Divergence suggest likelihood of light to moderate precipitation in Southern Luzon, Eastern Viayas and most parts of Mindanao. Northeast Monsoon affecting Northern-Extreme Northern Luzon while Easterlies affecting the rest of the country during the forecast period.

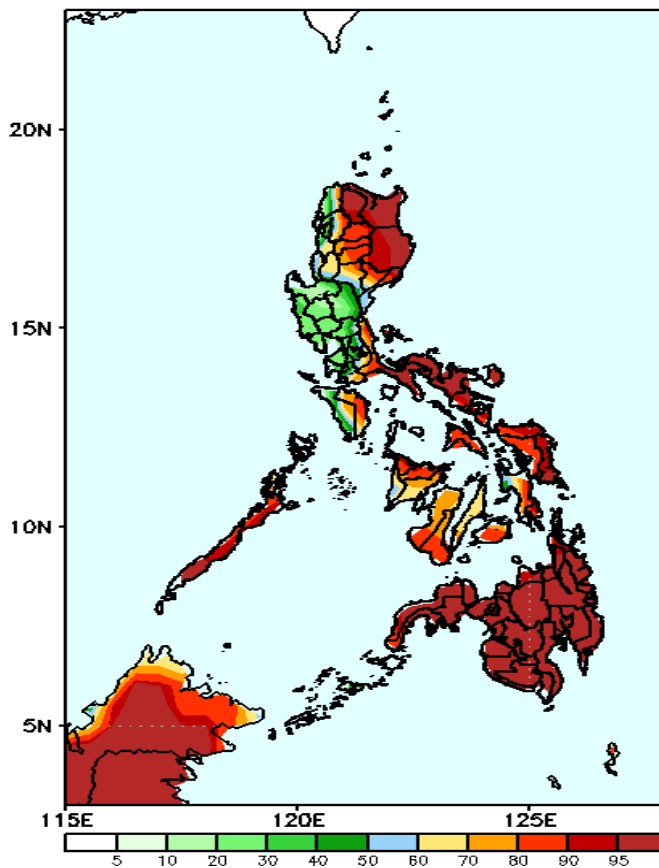
Precipitation Anomaly and Exceedance Probability > 25/50 mm

Week 1: Nov 18-24, 2021

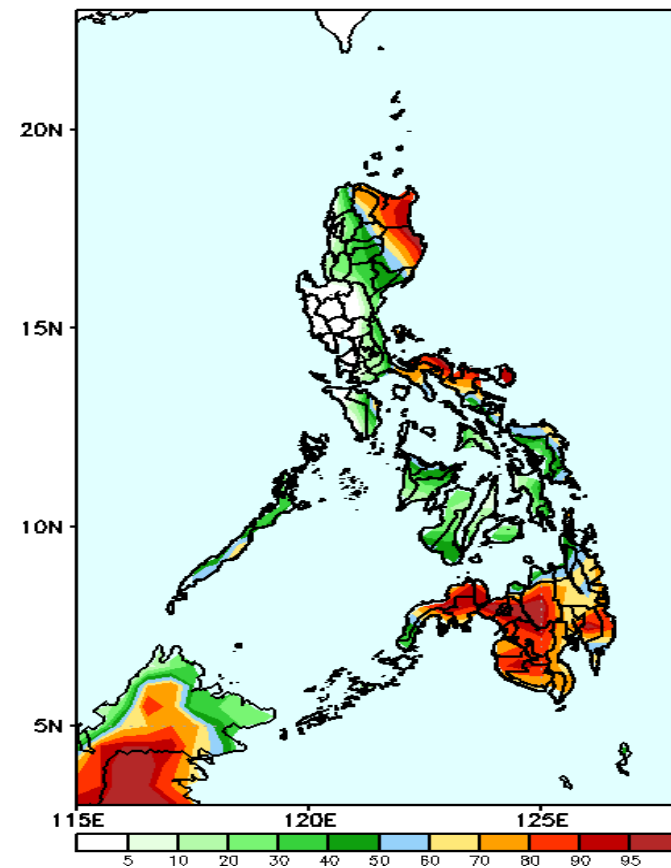
GEFS Week-1 Precip Anomaly
Valid: 20211118 - 20211124



GEFS Week-1 Exceedance Prob. > 25mm
Valid: 20211118 - 20211124



GEFS Week-1 Exceedance Prob. > 50mm
Valid: 20211118 - 20211124



Rainfall deficit of 20-80mm in most parts of the country is expected except in the southern part of Mindanao where there is increase of rainfall of 20-50mm during the forecast period.

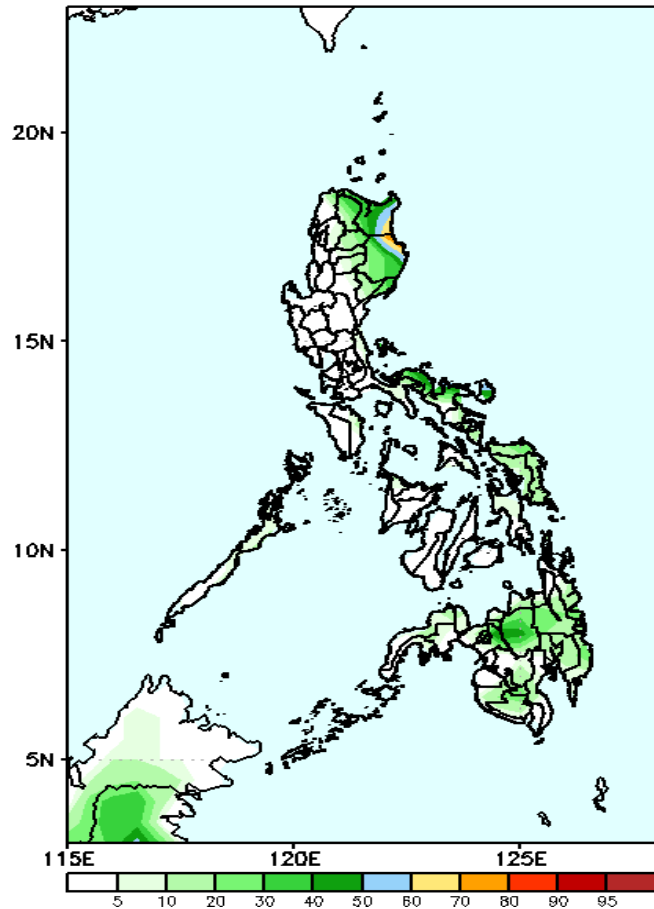
High probability of rainfall to exceed 25mm in most parts of Cagayan Valley, CAR, Southern Luzon and most parts of Visayas and Mindanao while less likely for the rest Luzon during the forecast period.

High probability of rainfall to exceed 50mm in Apayao, Cagayan, Isabela, Quezon, Bicol Region and most parts of Mindanao while less likely for the rest of the country during the forecast period.

Exceedance Probability > 100/150/200 mm

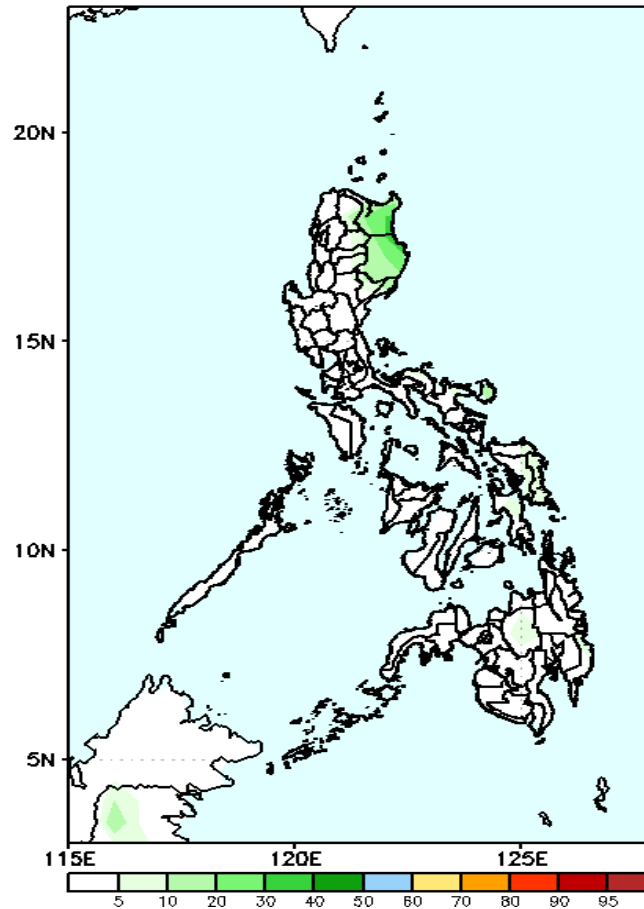
Week 1: Nov 18-24, 2021

GEFS Week-1 Exceedance Prob. > 100mm
Valid: 20211118 - 20211124



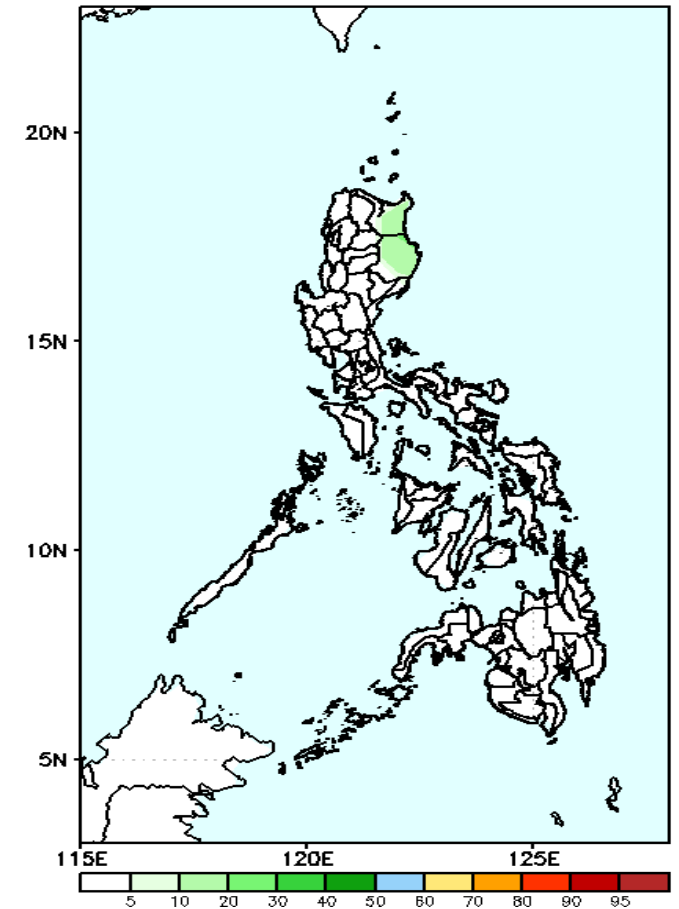
Less probability of rainfall to exceed 100mm in most parts of the country is expected during the forecast period.

GEFS Week-1 Exceedance Prob. > 150mm
Valid: 20211118 - 20211124



Less probability of rainfall to exceed 150mm in most parts of the country is expected during the forecast period.

GEFS Week-1 Exceedance Prob. > 200mm
Valid: 20211118 - 20211124

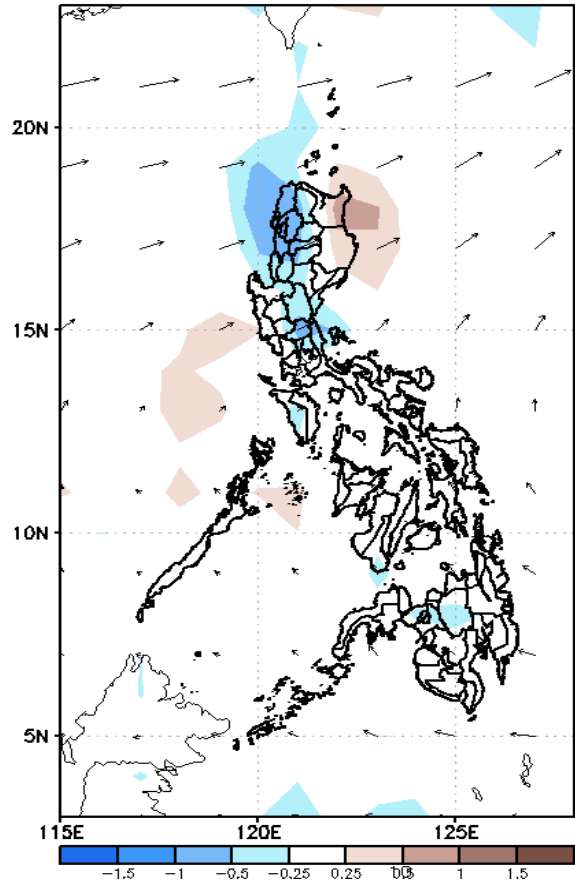


Less probability of rainfall to exceed 200mm in most parts of the country is expected during the forecast period.

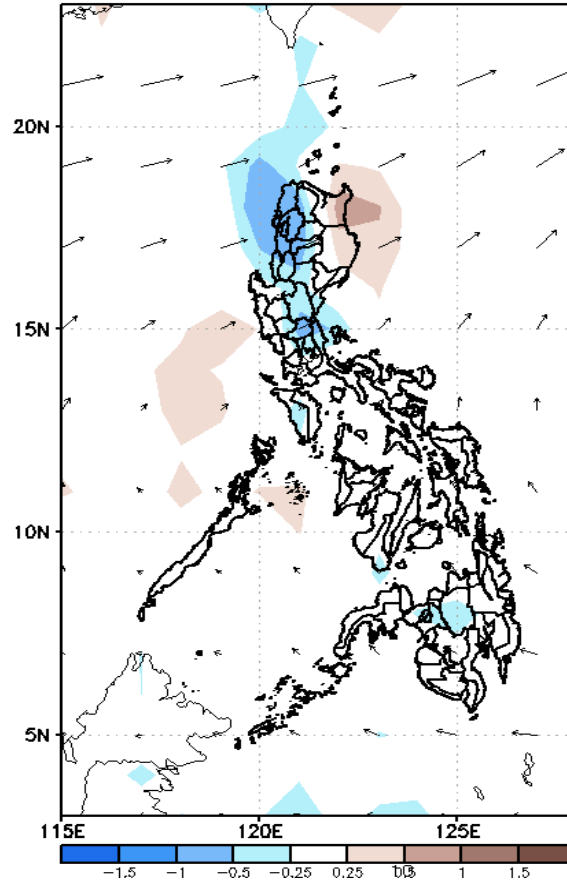
GEFS Week-2 Forecasts: Divergence & Wind Anomaly

Week 2: Nov 25-Dec 01, 2021

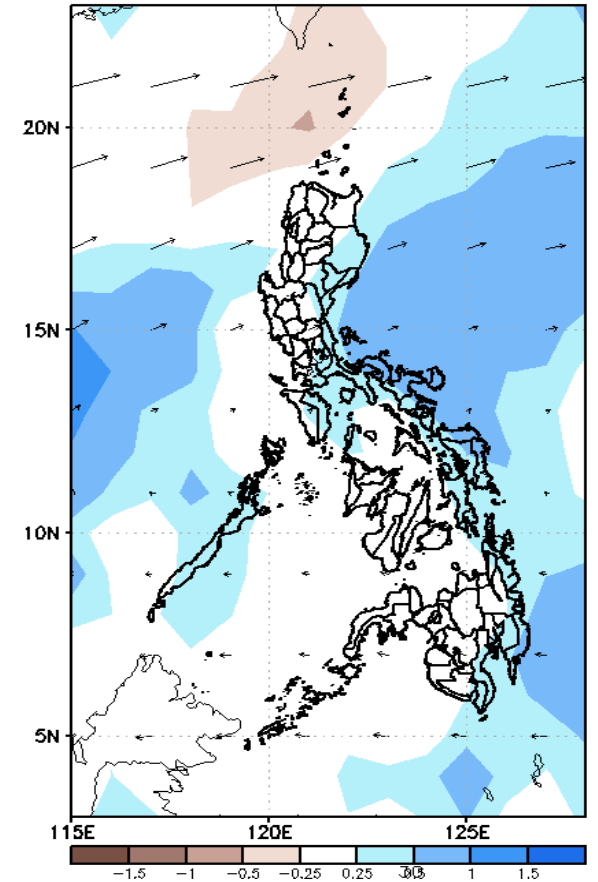
GEFS Week-2 850-hPa Divergence and Wind Anomaly
Valid: 20211125 - 20211201



GEFS Week-2 700-hPa Divergence and Wind Anomaly
Valid: 20211125 - 20211201



GEFS week-2 200-hPa Divergence and Wind Anomaly
Valid: 20211125 - 20211201

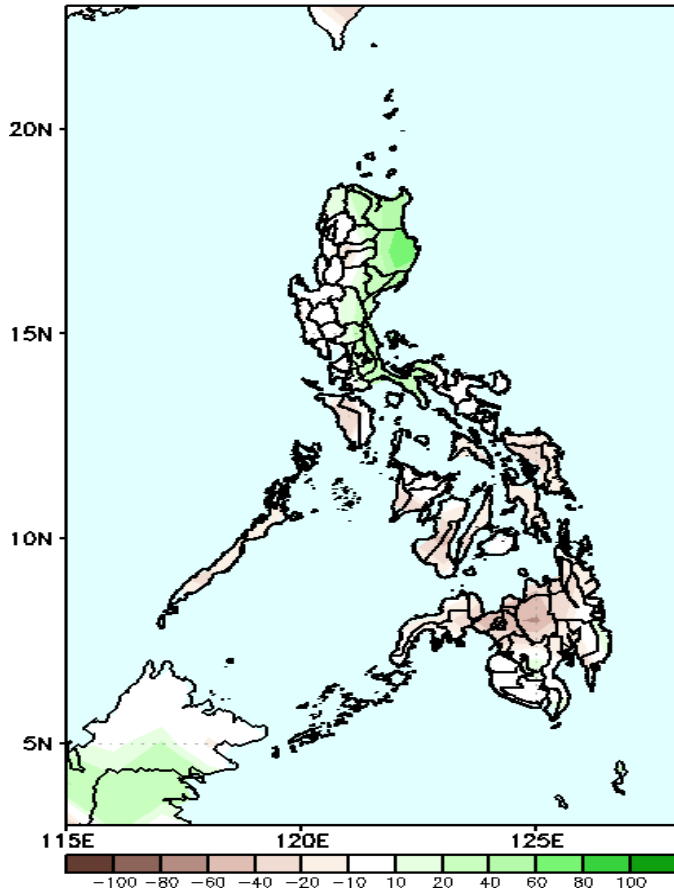


Upper and low level Divergence suggest likelihood of light to moderate precipitation in most parts of Luzon, Eastern Visayas and Mindanao. Northeast Monsoon affecting eastern sections of Luzon and Visayas while Easterlies affecting the rest of the country during the forecast period.

Precipitation Anomaly and Exceedance Probability > 25/50 mm

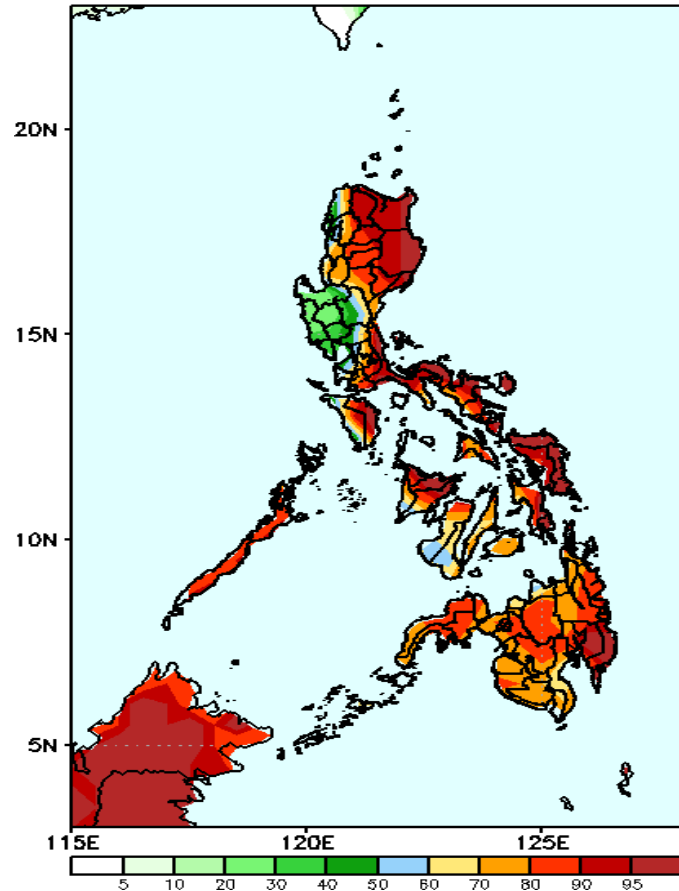
Week 2: Nov 25-Dec 01, 2021

GEFS Week-2 Precip Anomaly
Valid: 20211125 - 20211201



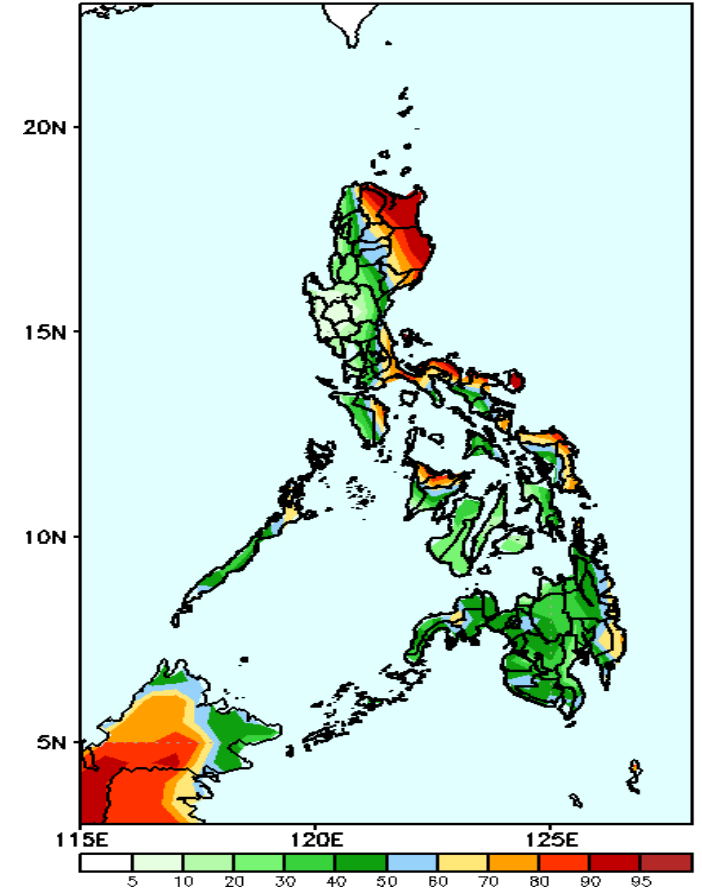
Rainfall deficit of 20-600mm in most parts of the country is expected except in some areas in Eastern Luzon where there is 20-60mm increase of rainfall during the forecast period.

GEFS Week-2 Exceedance Prob. > 25mm
Valid: 20211125 - 20211201



High probability of rainfall to exceed 25mm in most parts of the country except Pangasinan and most parts of Central Luzon during the forecast period.

GEFS Week-2 Exceedance Prob. > 50mm
Valid: 20211125 - 20211201

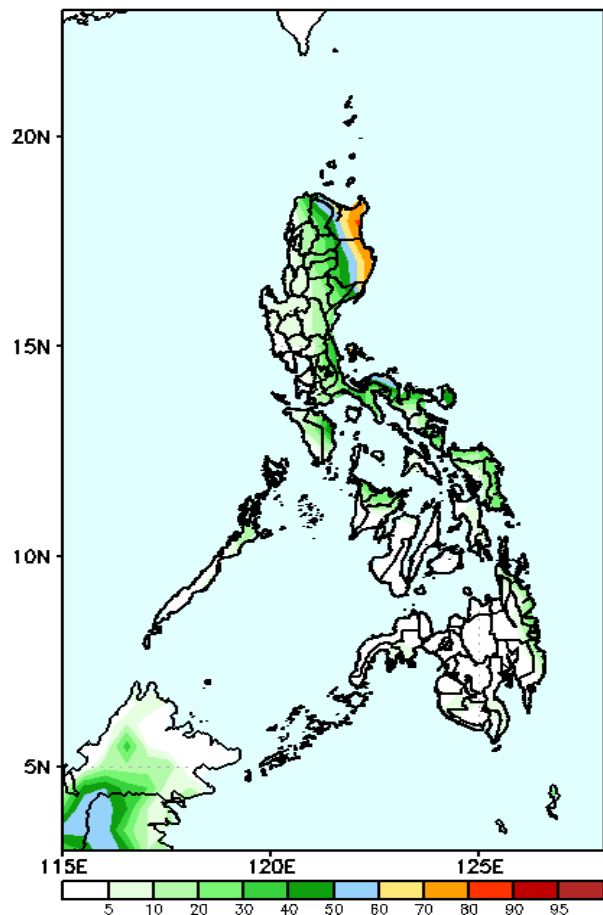


High probability of rainfall to exceed 50mm in Apayao, Cagayan, Isabela, Quezon, eastern parts of Bicol Region, Aklan, Capiz and Northern & Eastern Visayas while less likely for the rest of the country during the forecast

Exceedance Probability > 100/150/200 mm

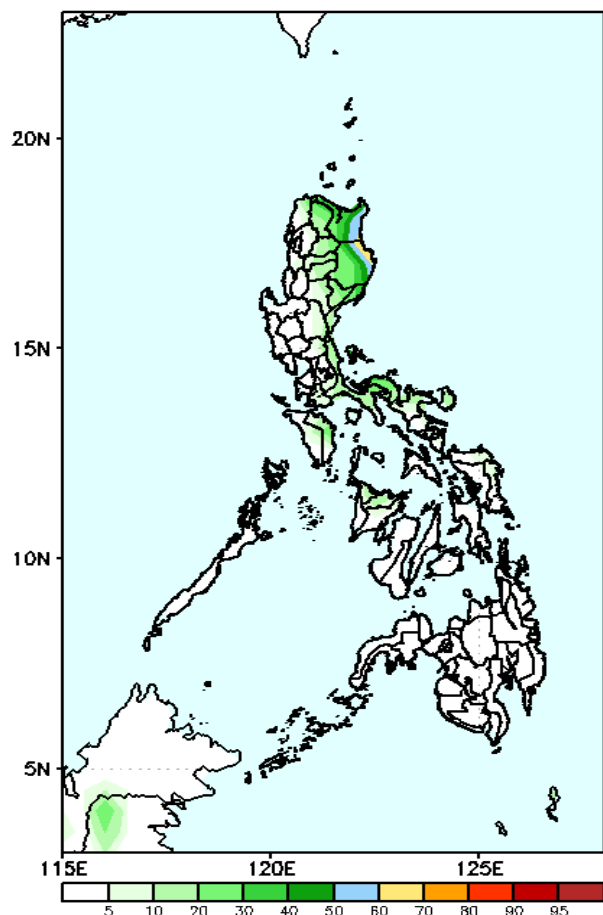
Week 2: Nov 25-Dec 01, 2021

GEFS Week-2 Exceedance Prob. > 100mm
Valid: 20211125 - 20211201



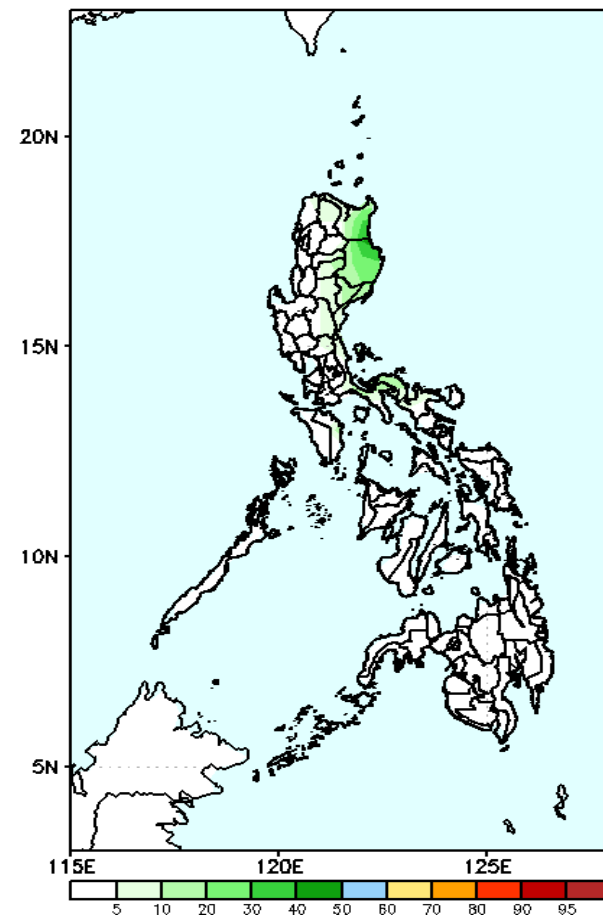
Less probability of rainfall to exceed 100mm in most parts of the country is expected except in the eastern part of Cagayan & Isabela where there is 60-80% chance during the forecast period.

GEFS Week-2 Exceedance Prob. > 150mm
Valid: 20211125 - 20211201



Less probability of rainfall to exceed 150mm in most parts of the country is expected during the forecast period.

GEFS Week-2 Exceedance Prob. > 200mm
Valid: 20211125 - 20211201

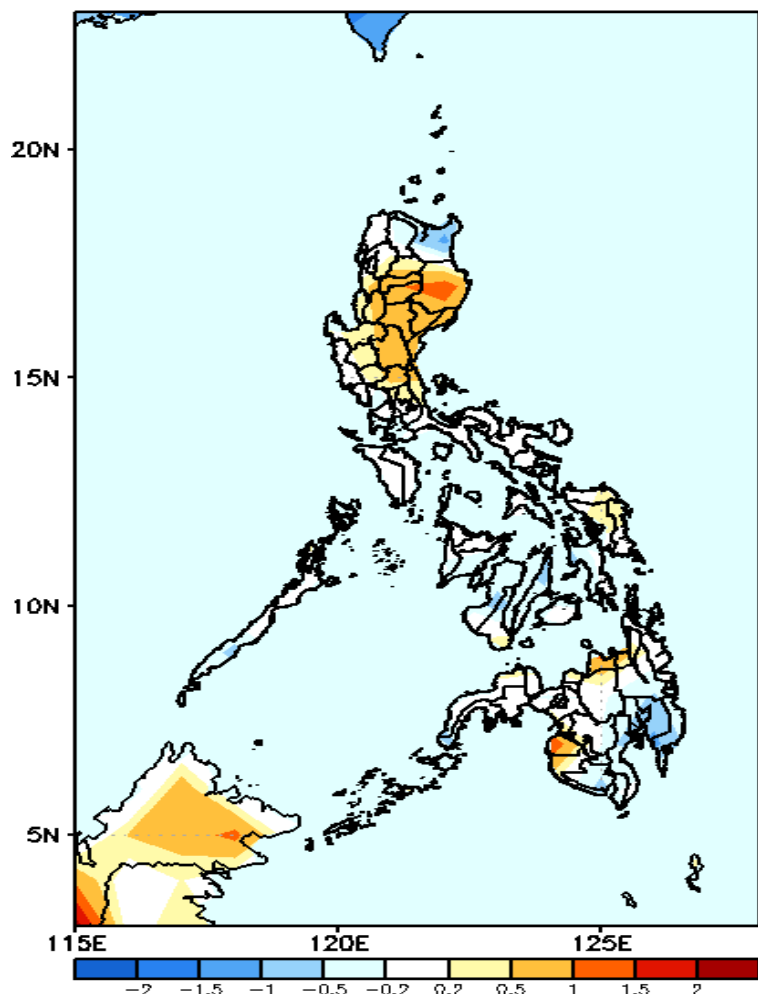


Less probability of rainfall to exceed 200mm in most parts of the country is expected during the forecast period.



GEFS Week-1 & 2 Forecasts: T2m Anomaly

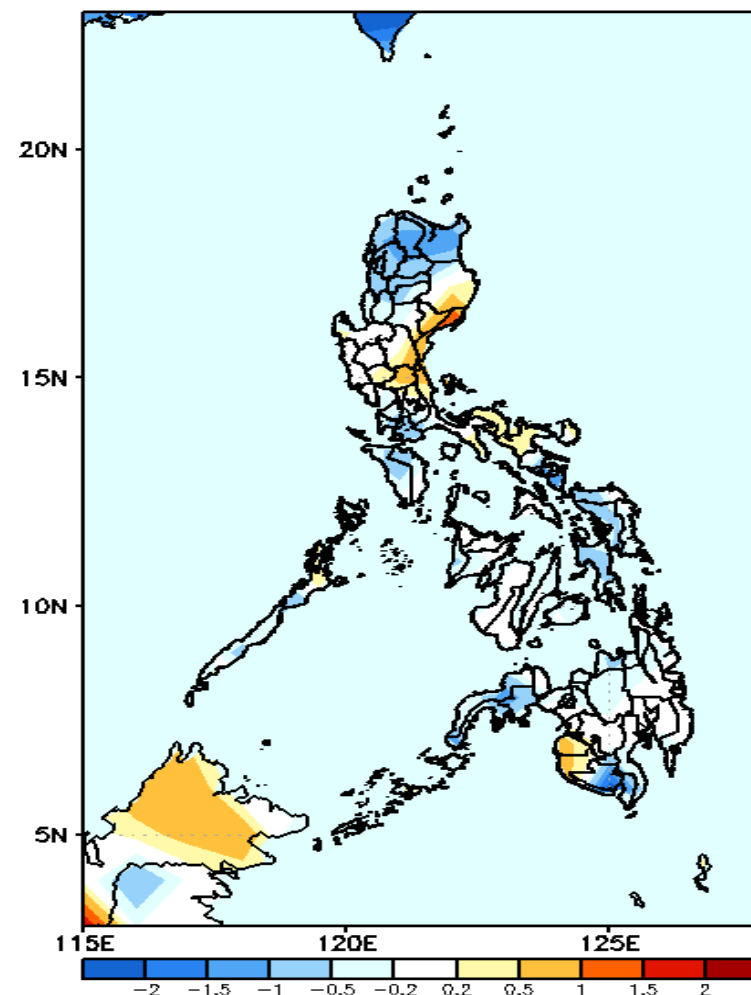
GEFS Week-1 T2m Anomaly
Valid: 20211118 - 20211124



2m Temperature Week 1: Nov 18-24, 2021

Slightly warmer to warmer than average surface air temperature will likely experience in most parts of Luzon (except in Cagayan), Maguindanao and Misamis Oriental while average to slightly cooler temperature for the rest of the country during the forecast period.

GEFS Week-2 T2m Anomaly
Valid: 20211125 - 20211201



2m Temperature Week 2: Nov 25-Dec 01, 2021

Slightly cooler to cooler than average surface air temperature will likely experience in most parts of northern Luzon, Eastern Visayas, Zamboanga Peninsula, Sarangani & South Cotabato while average to slightly warmer than average temperature for the rest of the country during the