



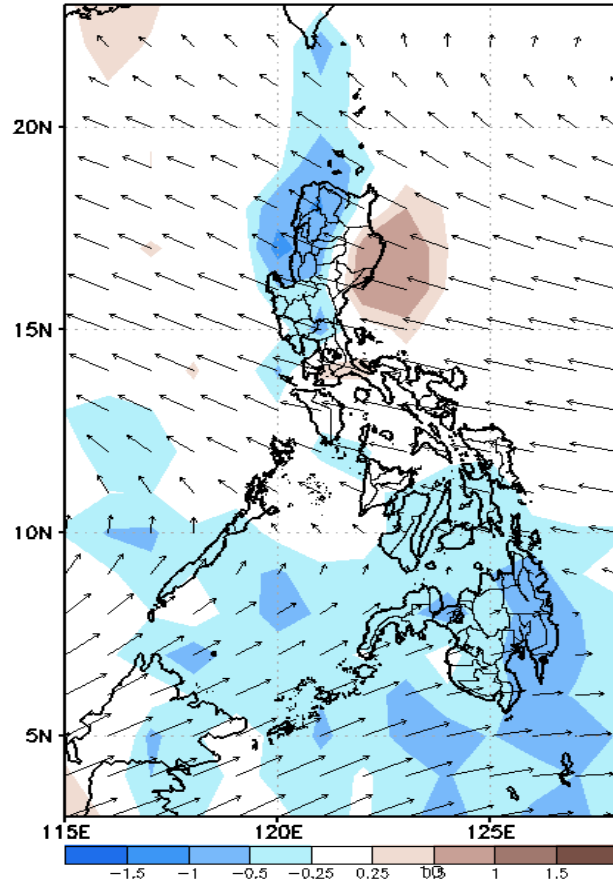
Week 1 & Week 2 Forecast for the Philippines using GEFS Model



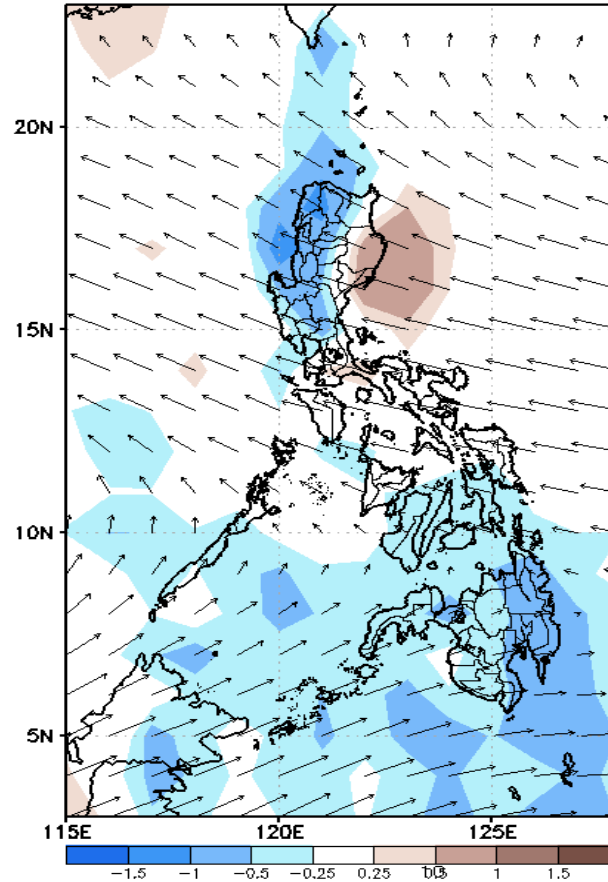
GEFS Week-1 Forecasts: Wind Anomaly Forecast

Week 1: Nov 18-24, 2022

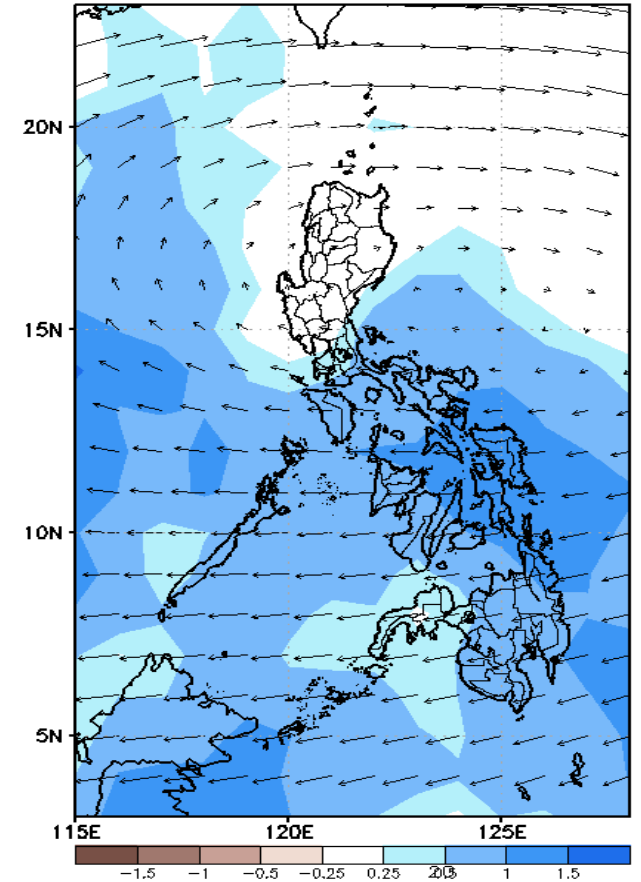
GEFS Week-1 850-hPa Divergence and Wind Anom
Valid: 20221118 - 20221124



GEFS Week-1 700-hPa Divergence and Wind Anom
Valid: 20221118 - 20221124



GEFS Week-1 200-hPa Divergence and Wind Anom
Valid: 20221118 - 20221124

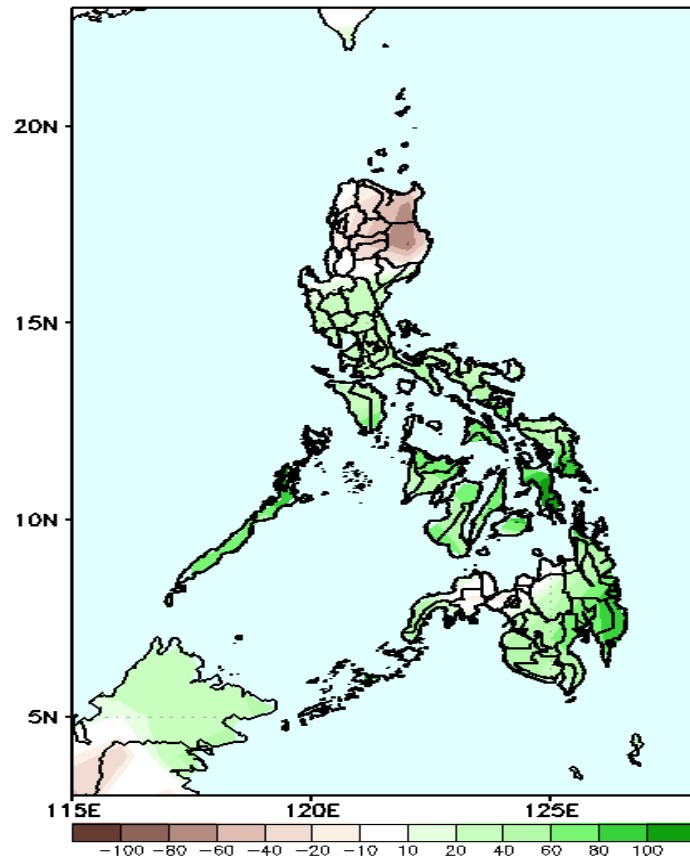


Easterlies will likely affect most parts of the country during the forecast period.

Precipitation Anomaly and Exceedance Probability > 25/50 mm

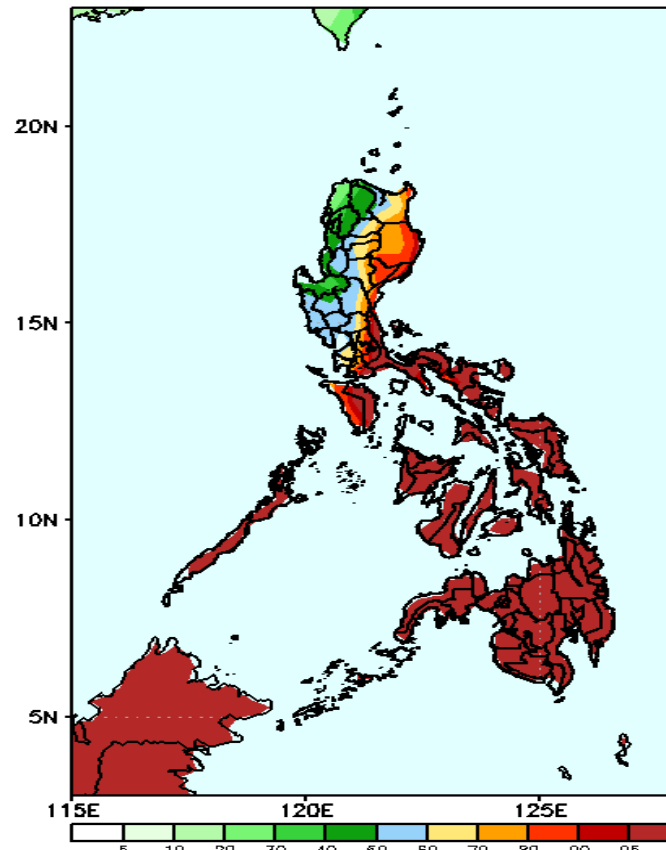
Week 1: Nov 18-24, 2022

GEFS Week-1 Precip Anomaly
Valid: 20221118 - 20221124



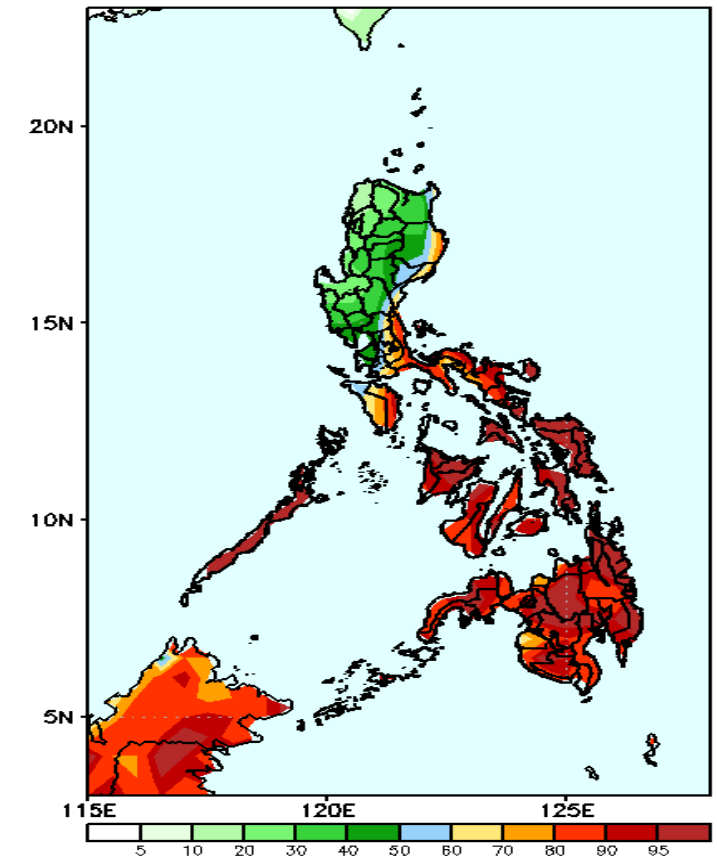
Increase of rainfall of 40-100mm is expected in most parts of the country except in northern Luzon where 20-80mm rainfall deficit is more likely during the forecast period.

GEFS Week-1 Exceedance Prob. > 25mm
Valid: 20221118 - 20221124



High probability of rainfall to exceed 25mm in most parts of the country except in most areas in western Luzon during the forecast period.

GEFS Week-1 Exceedance Prob. > 50mm
Valid: 20221118 - 20221124

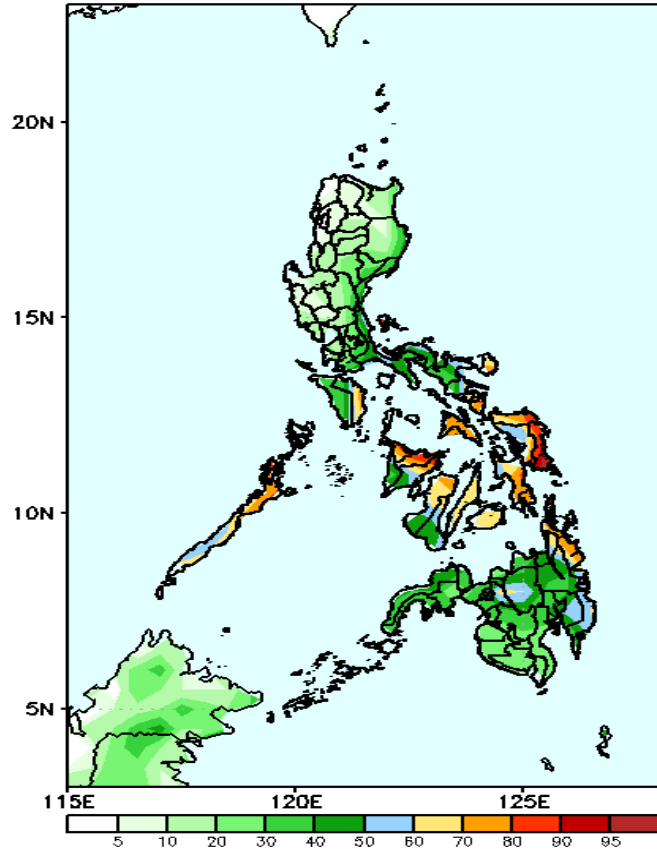


High probability of rainfall to exceed 50mm in eastern part of Isabela, Aurora, most parts of southern Luzon, Visayas and Mindanao while less likely for the rest of Luzon during the forecast period.

Exceedance Probability > 100/150/200 mm

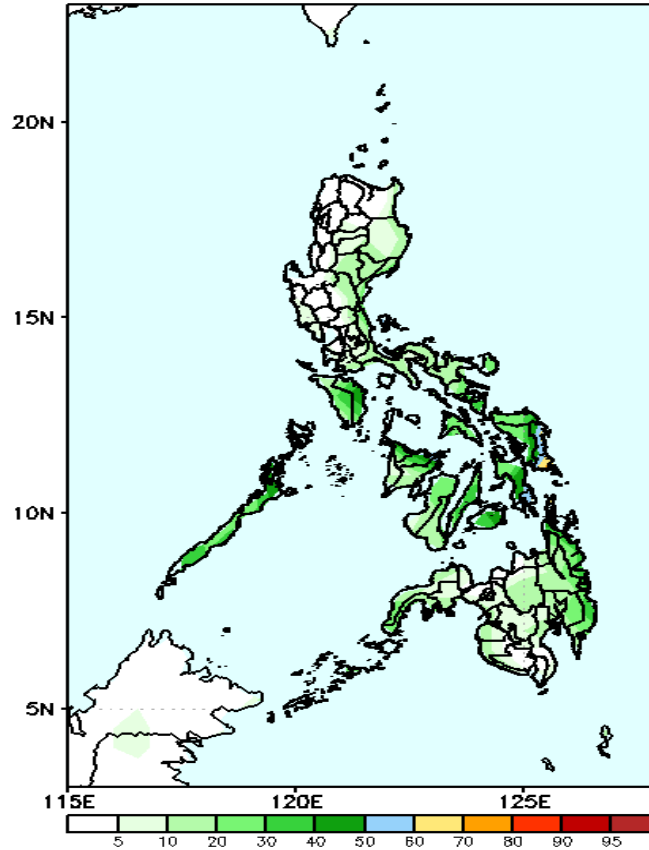
Week 1: Nov 18-24, 2022

GEFS Week-1 Exceedance Prob. > 100mm
Valid: 20221118 – 20221124



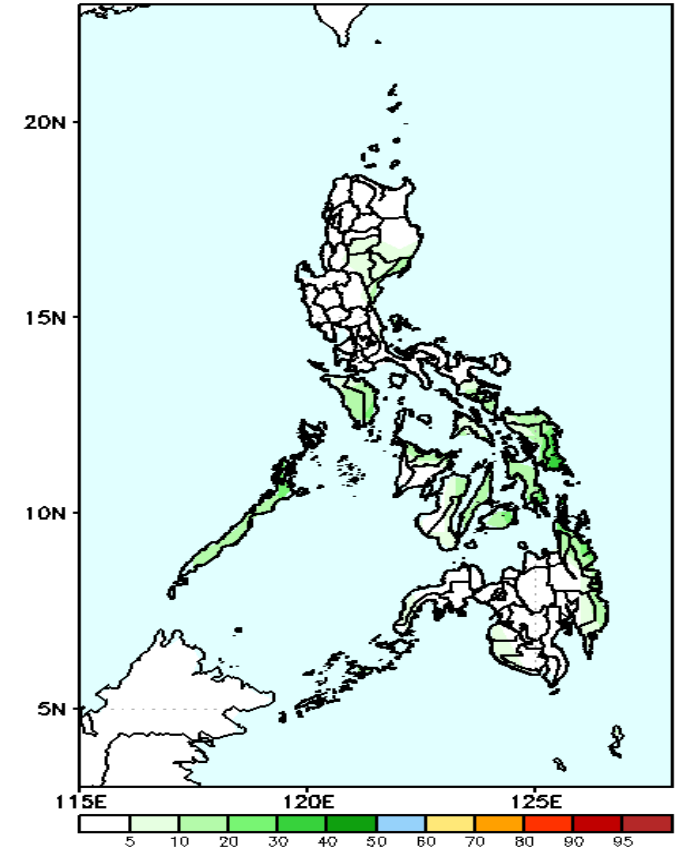
60-95% probability of rainfall to exceed 100mm in Catanduanes, Sorsogon, Or. Mindoro, Palawan, most parts of Visayas, and CARAGA Region while less likely for the rest of the country during the forecast period.

GEFS Week-1 Exceedance Prob. > 150mm
Valid: 20221118 – 20221124



Low probability of rainfall to exceed 150mm in most parts of the country during the forecast period.

GEFS Week-1 Exceedance Prob. > 200mm
Valid: 20221118 – 20221124

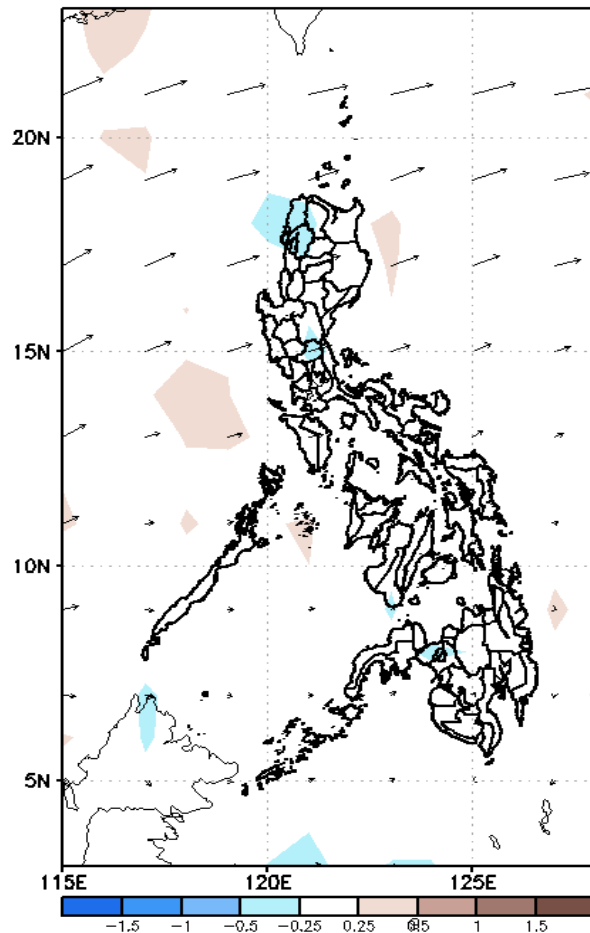


Low probability of rainfall to exceed 200mm in most parts of the country during the forecast period.

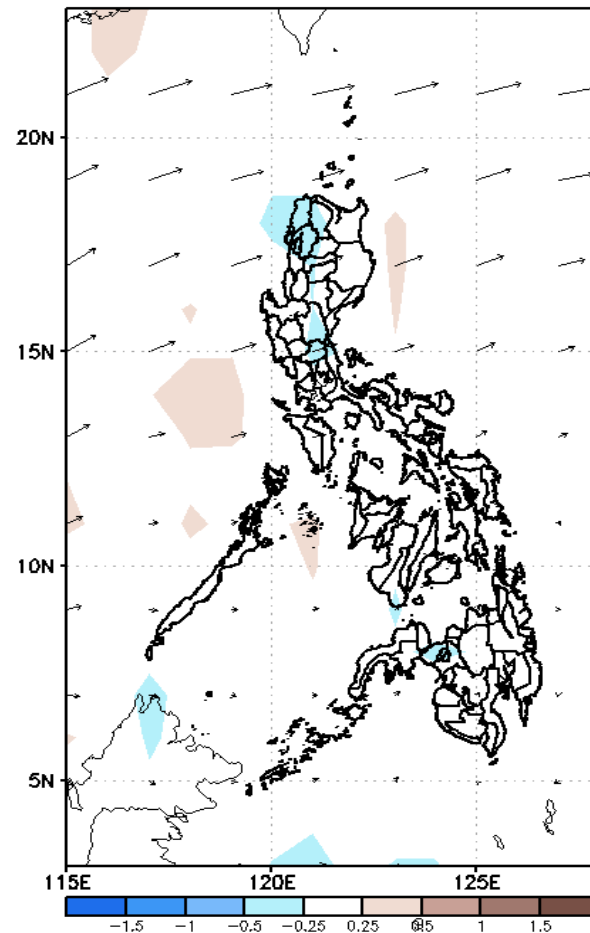
GEFS Week-2 Forecasts: Wind Anomaly Forecast

Week 2: Nov 25- Dec 01, 2022

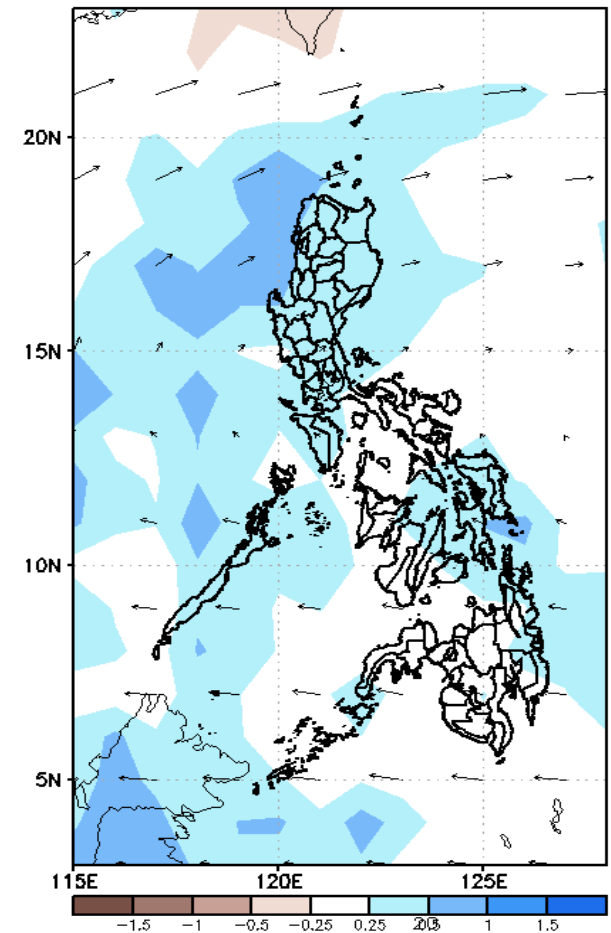
GEFS Week-2 850-hPa Divergence and Wind Anom
Valid: 20221125 - 20221201



GEFS Week-2 700-hPa Divergence and Wind Anom
Valid: 20221125 - 20221201



GEFS week-2 200-hPa Divergence and Wind Anom
Valid: 20221125 - 20221201

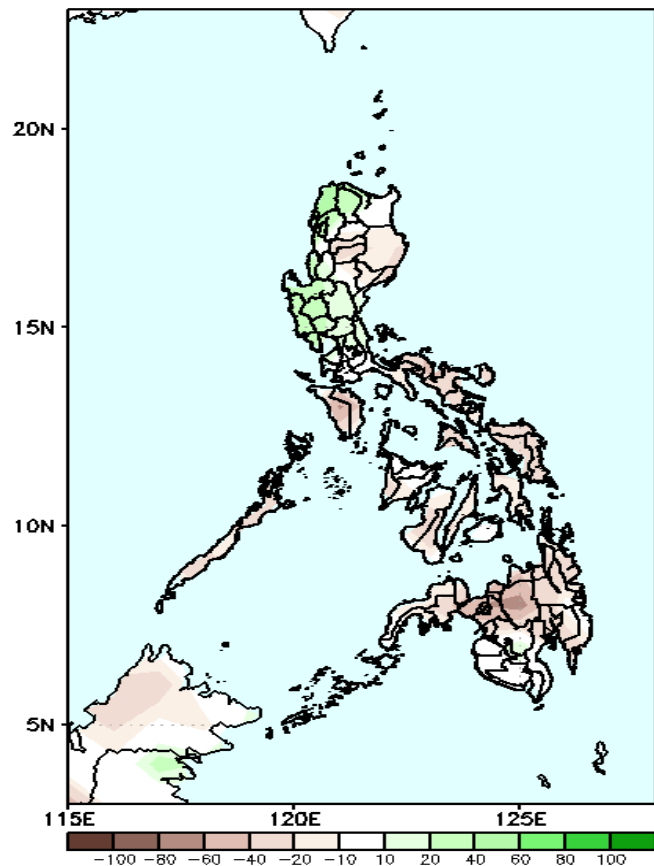


Easterlies will likely affect most parts of the country during the forecast period.

Precipitation Anomaly and Exceedance Probability > 25/50 mm

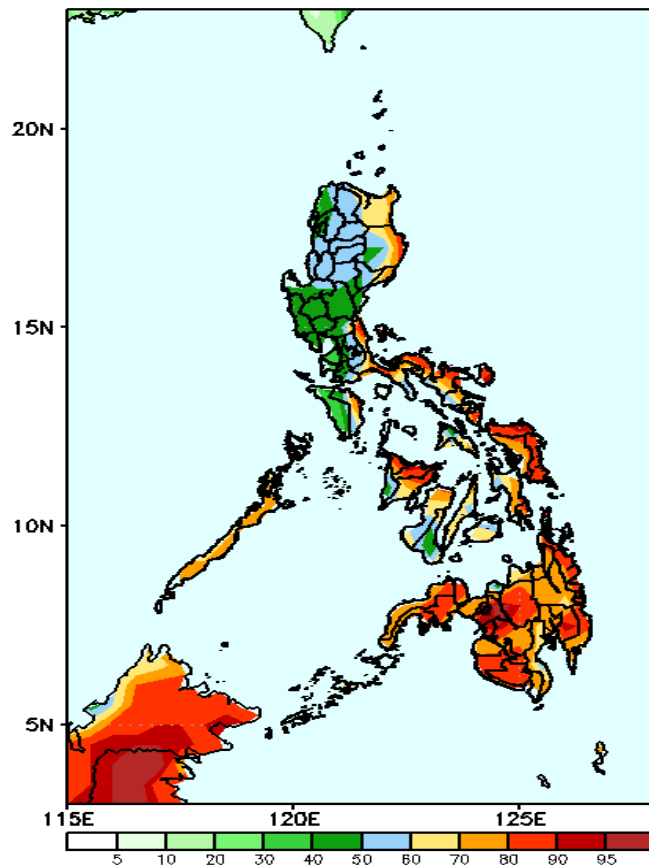
Week 2: Nov 25- Dec 01, 2022

GEFS Week-2 Precip Anomaly
Valid: 20221125 - 20221201



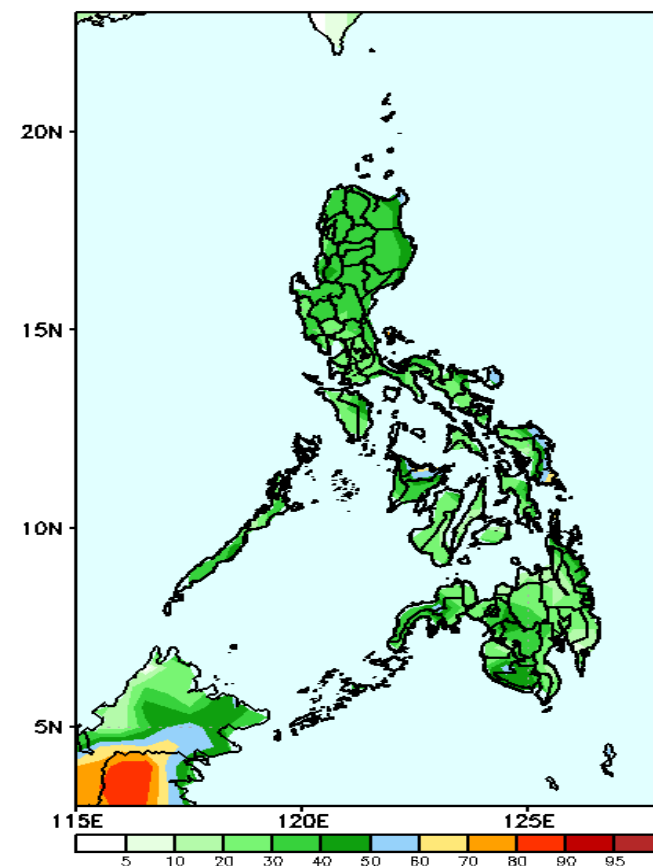
Rainfall deficit of 20-60mm is most likely in most parts of the country except in northwestern and central parts of Luzon where 20-60mm increase of rainfall is more likely during the forecast period.

GEFS Week-2 Exceedance Prob. > 25mm
Valid: 20221125 - 20221201



High probability of rainfall to exceed 25mm in most parts of the country except in central Luzon and Occ. Mindoro during the forecast period.

GEFS Week-2 Exceedance Prob. > 50mm
Valid: 20221125 - 20221201

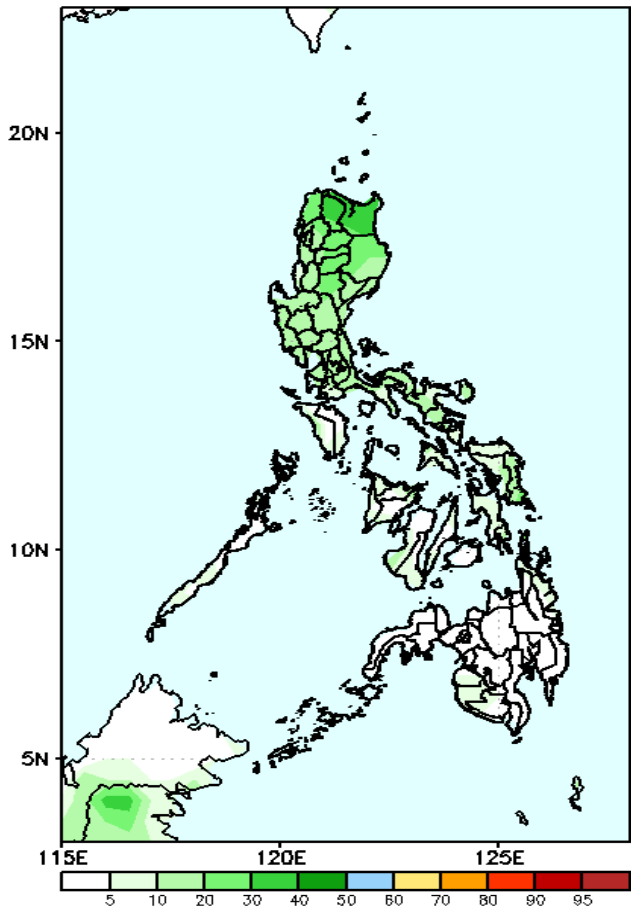


Low probability of rainfall to exceed 50mm in most parts of the country during the forecast period.

Exceedance Probability > 100/150/200 mm

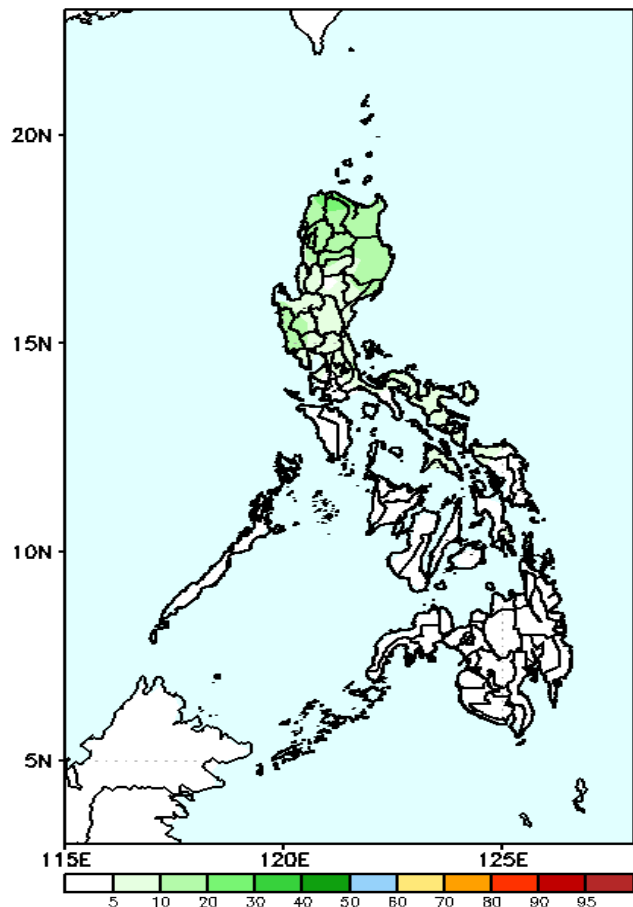
Week 2: Nov 25- Dec 01, 2022

GEFS Week-2 Exceedance Prob. > 100mm
Valid: 20221125 – 20221201



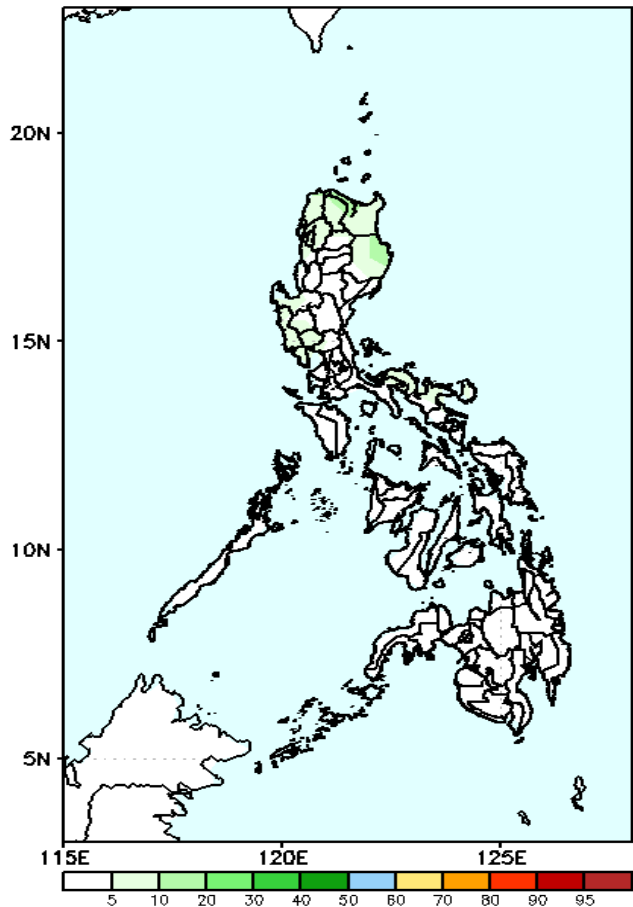
Low probability of rainfall to exceed 100mm in most parts of the country during the forecast period.

GEFS Week-2 Exceedance Prob. > 150mm
Valid: 20221125 – 20221201



Low probability of rainfall to exceed 150mm in most parts of the country during the forecast period.

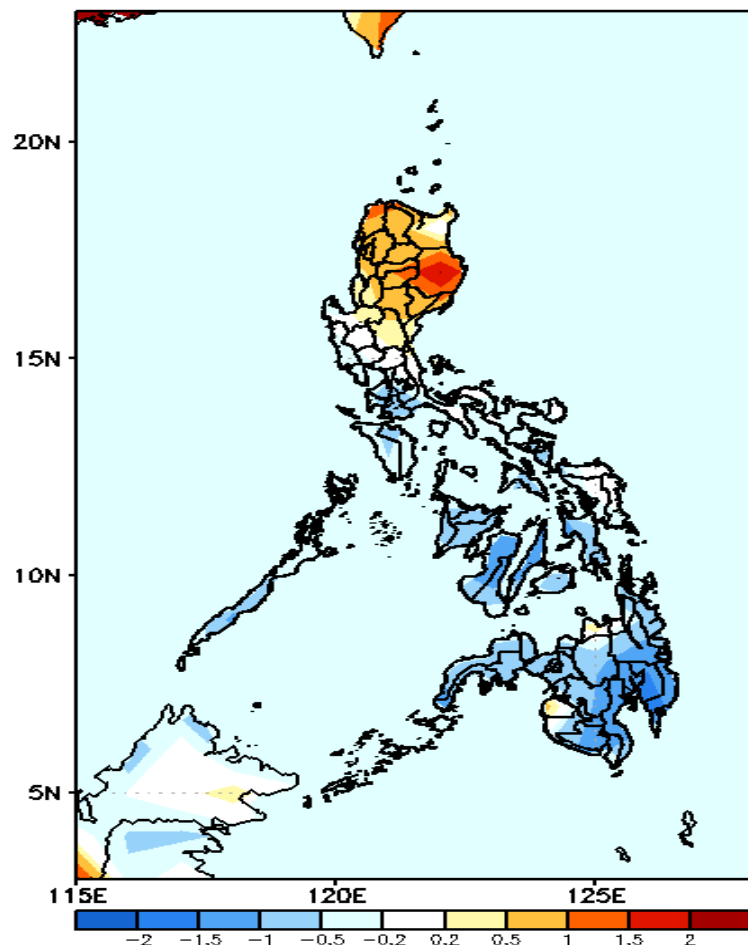
GEFS Week-2 Exceedance Prob. > 200mm
Valid: 20221125 – 20221201



Low probability of rainfall to exceed 200mm in most parts of the country during the forecast period.

GEFS Week-1 & 2 Forecasts: T2m Anomaly

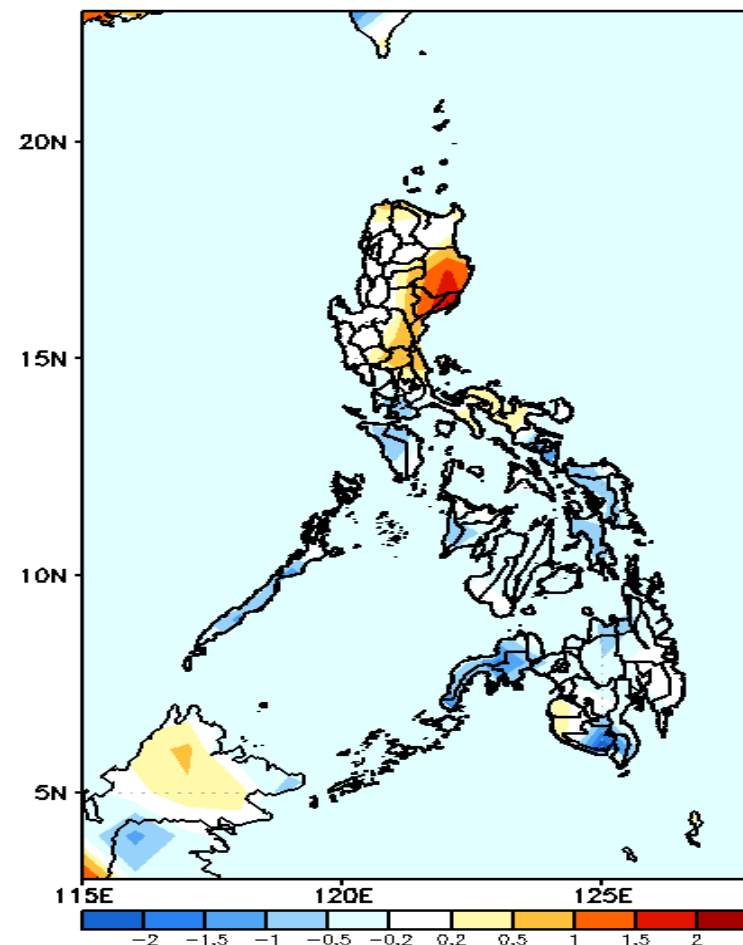
GEFS Week-1 T2m Anomaly
Valid: 20221118 — 20221124



2m Temperature Week 1: Nov 18-24, 2022

Near to slightly warmer than average surface air temperature will likely experience in most parts Northern and Central Luzon, Misamis Oriental and Maguindanao while slightly cooler to cooler than average surface air temperature will be likely for the rest of the country during the forecast period.

GEFS Week-2 T2m Anomaly
Valid: 20221125 — 20221201



2m Temperature Week 2: Nov 25- Dec 01, 2022

Near to slightly warmer than average surface air temperature will likely experience in most parts Luzon (except CALABAR), Sultan Kudarat and Maguindanao while slightly cooler to cooler than average surface air temperature will be likely for the rest of the country during the forecast period.