



USAID
FROM THE AMERICAN PEOPLE



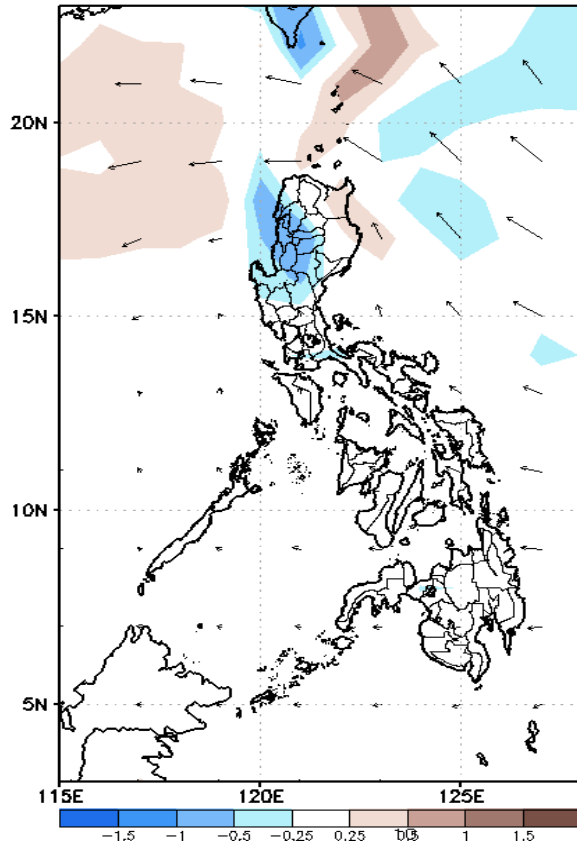
Week 1 & Week 2 Forecast for the Philippines using GEFS Model



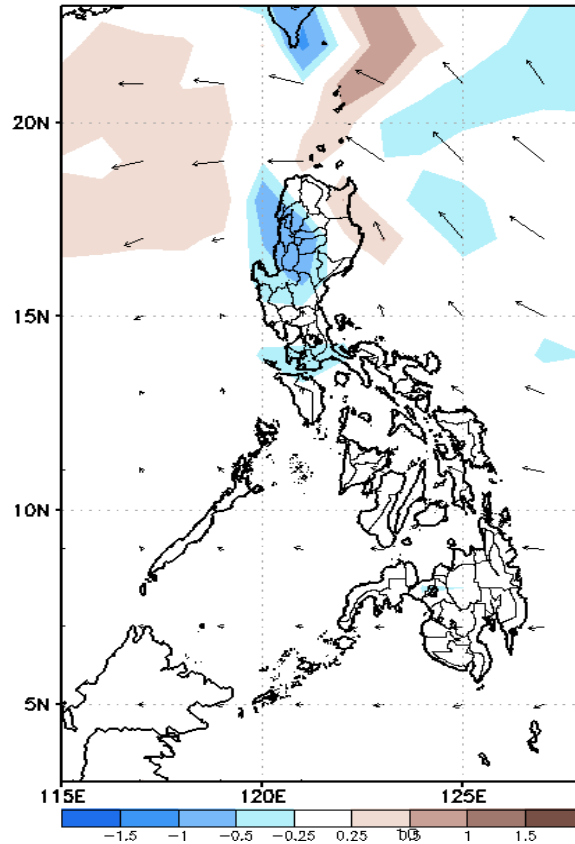
GEFS Week-1 Forecasts: Divergence & Wind

Week 1: Nov 18-24, 2019

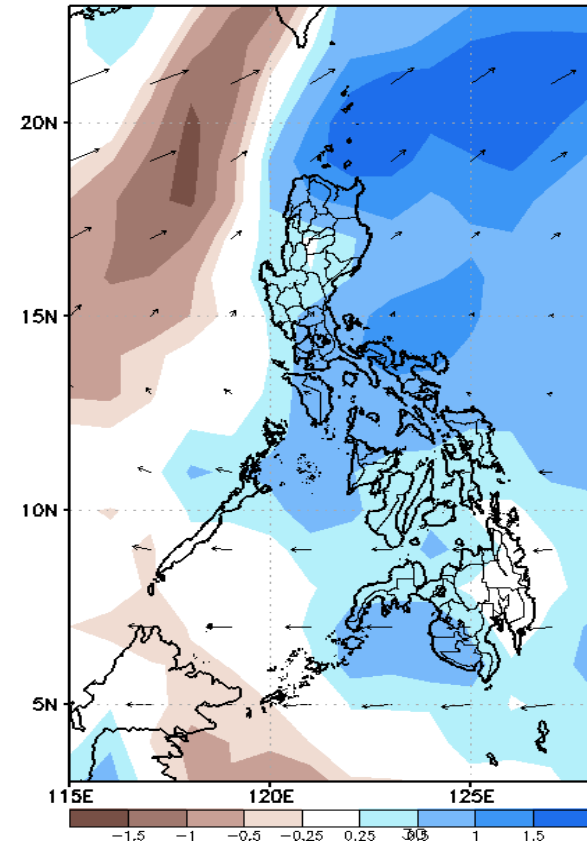
GEFS Week-1 850-hPa Divergence and Wind
Valid: 20191118 - 20191124



GEFS Week-1 700-hPa Divergence and Wind
Valid: 20191118 - 20191124



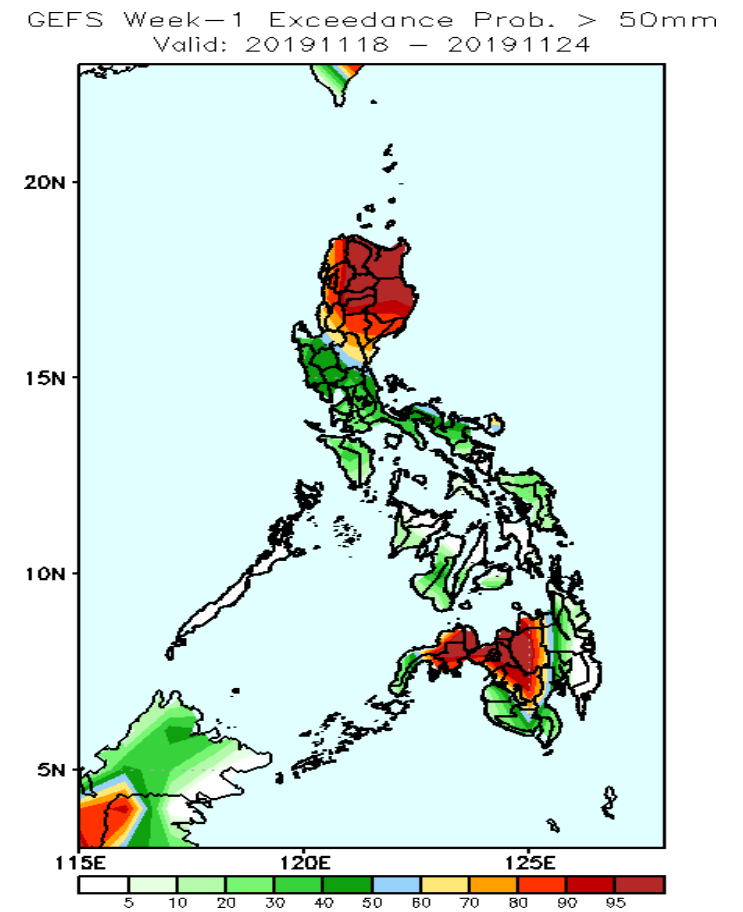
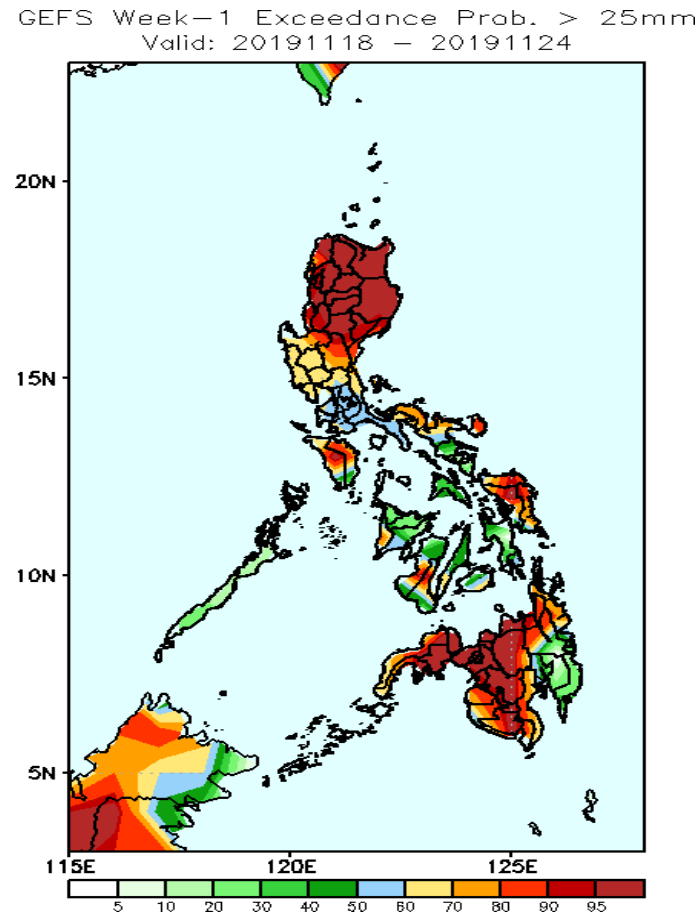
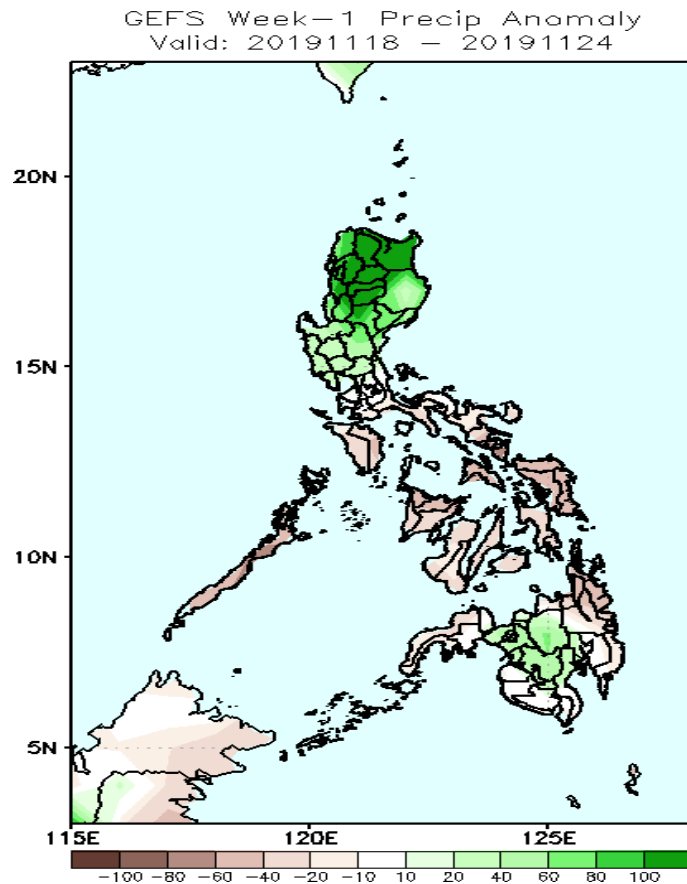
GEFS Week-1 200-hPa Divergence and Wind
Valid: 20191118 - 20191124



Low level (850 hPa) Divergence (Brown shaded color) suggest likelihood of heavy precipitation in north western Luzon during the forecast period. Moreover a cyclonic wind pattern is affecting most parts of Luzon during the forecast period.

Precipitation Anomaly and Exceedance Probability > 25/50 mm

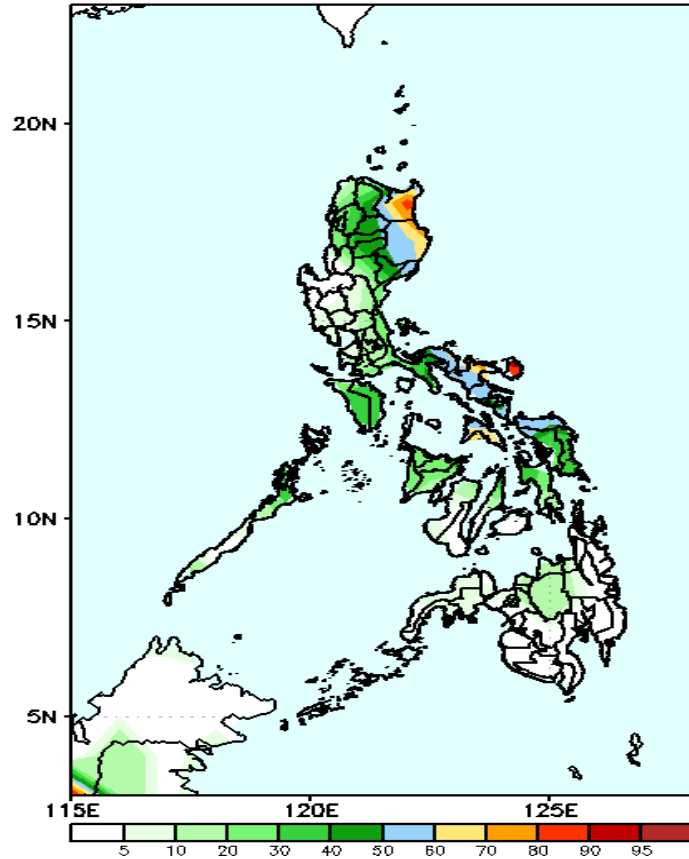
Week 1: Nov 18-24, 2019



Exceedance Probability > 100/150/200 mm

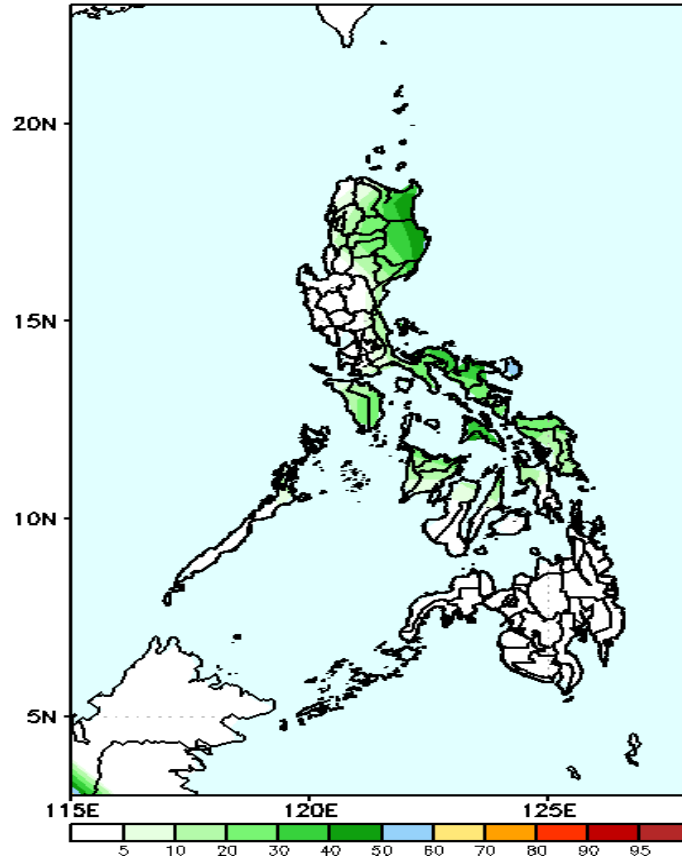
Week 1: Nov 18-24, 2019

GEFS Week-2 Exceedance Prob. > 100mm
Valid: 20191125 - 20191201



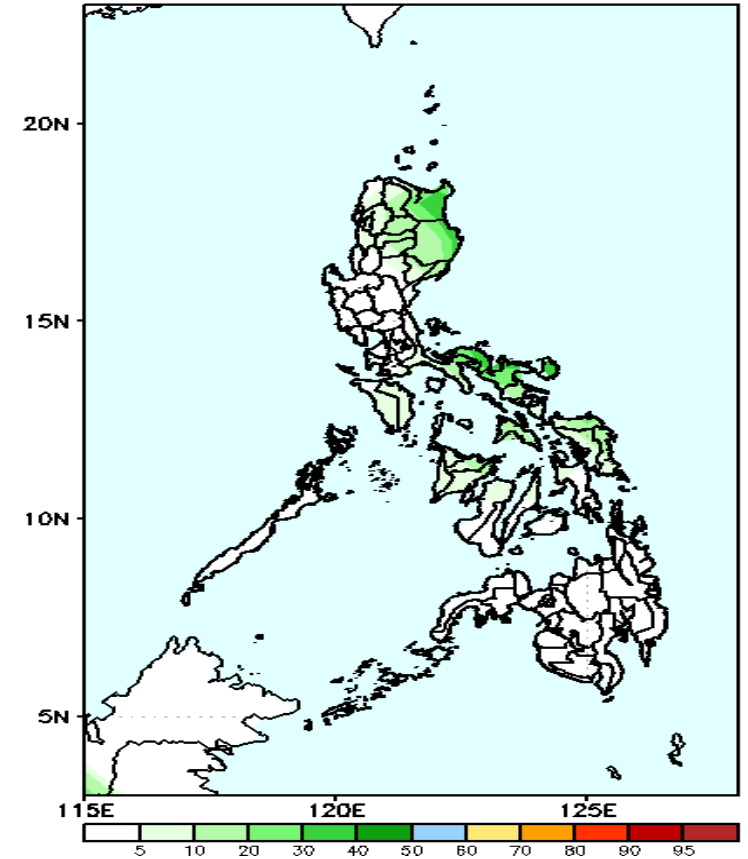
30-70% probabilities for rainfall exceeding 100mm in Northern Luzon while less likely for rest of the country during the forecast period.

GEFS Week-2 Exceedance Prob. > 150mm
Valid: 20191125 - 20191201



30-50% probabilities for rainfall exceeding 150mm in eastern parts of Luzon and Visayas while less likely for rest of the country during the forecast period.

GEFS Week-2 Exceedance Prob. > 200mm
Valid: 20191125 - 20191201

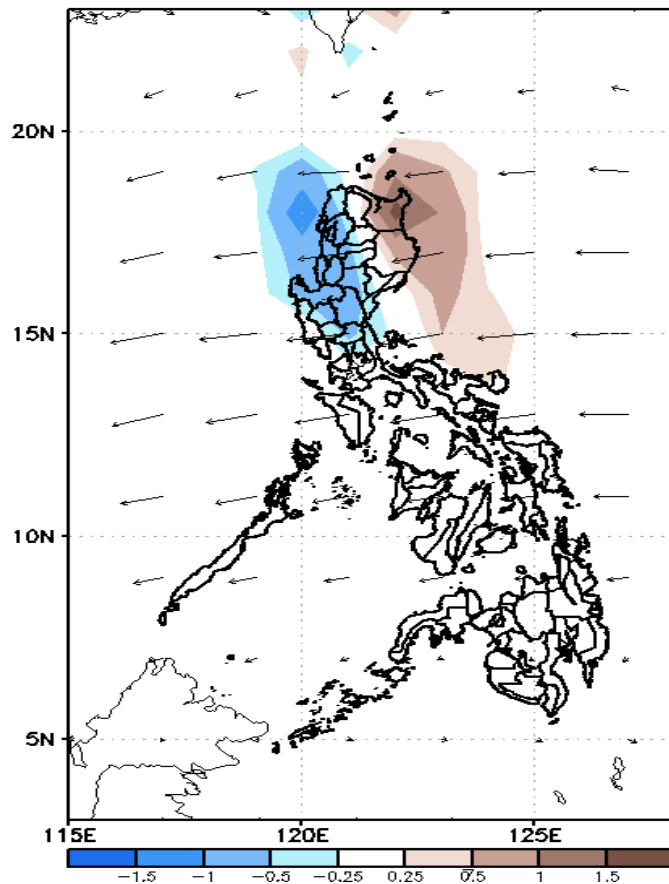


30-50% probabilities for rainfall exceeding 200mm in eastern parts of Luzon and Visayas while less likely for rest of the country during the forecast period.

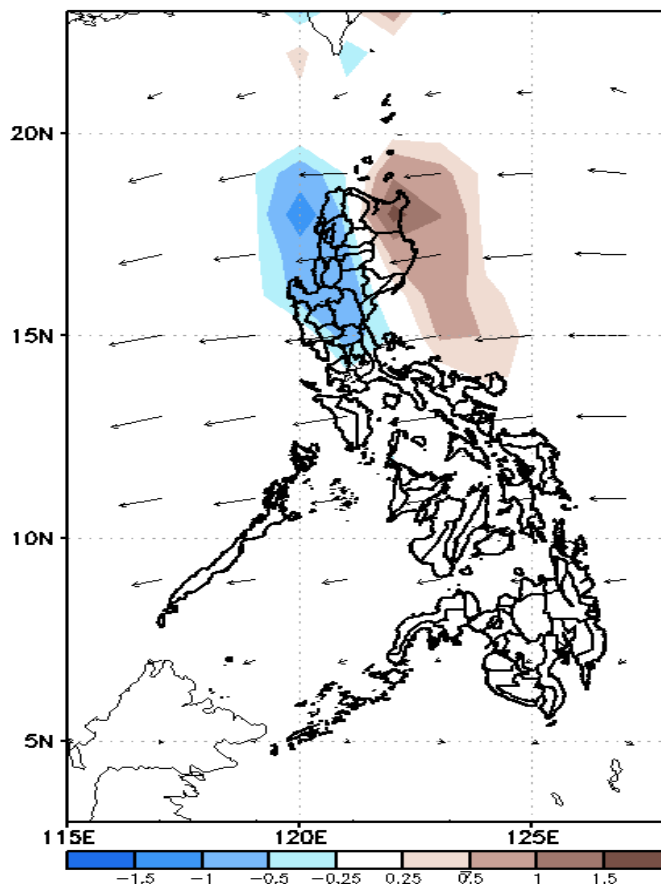
GEFS Week-2 Forecasts: Divergence & Wind

Week 2: Nov 25-Dec 01, 2019

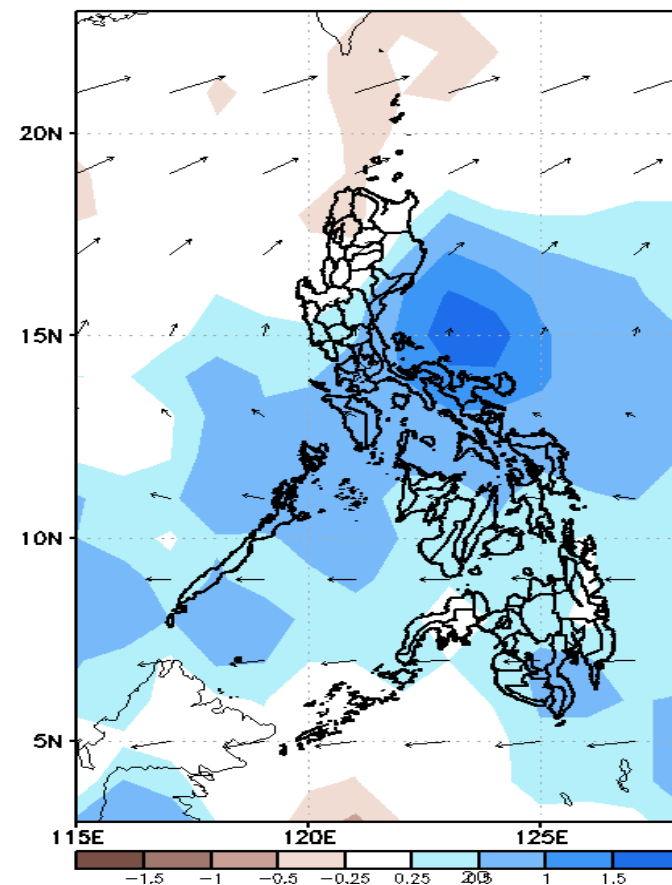
GEFS Week-2 850-hPa Divergence and Wind
Valid: 20191125 - 20191201



GEFS Week-2 700-hPa Divergence and Wind
Valid: 20191125 - 20191201



GEFS week-2 200-hPa Divergence and Wind
Valid: 20191125 - 20191201

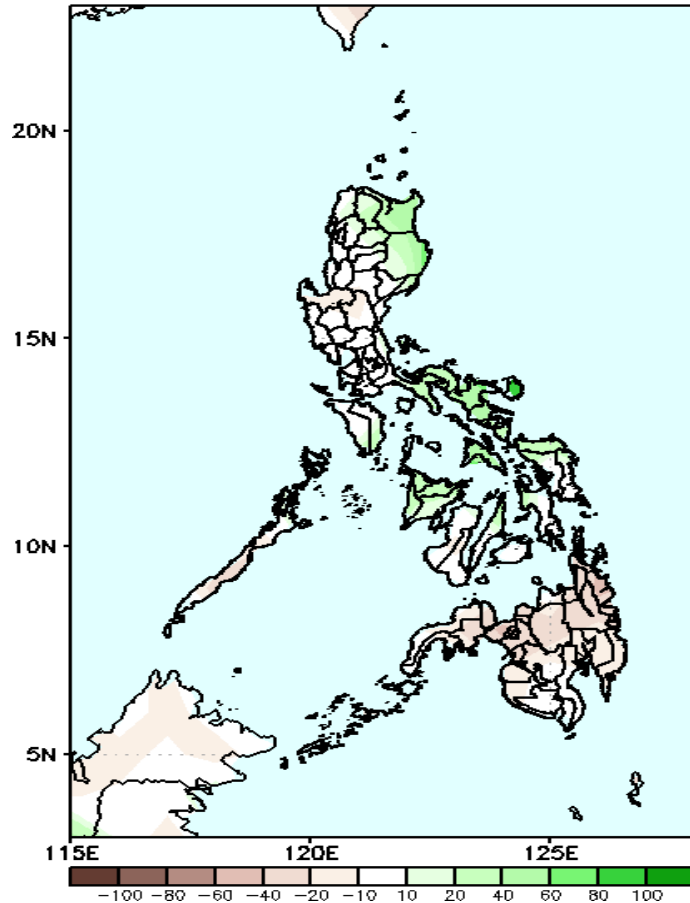


Low level (850 hPa) Divergence (Brown shaded color) suggest likelihood of heavy precipitation in western Luzon during the forecast period. Easterly winds affecting most parts of the country during the forecast period.

Precipitation Anomaly and Exceedance Probability > 25/50 mm

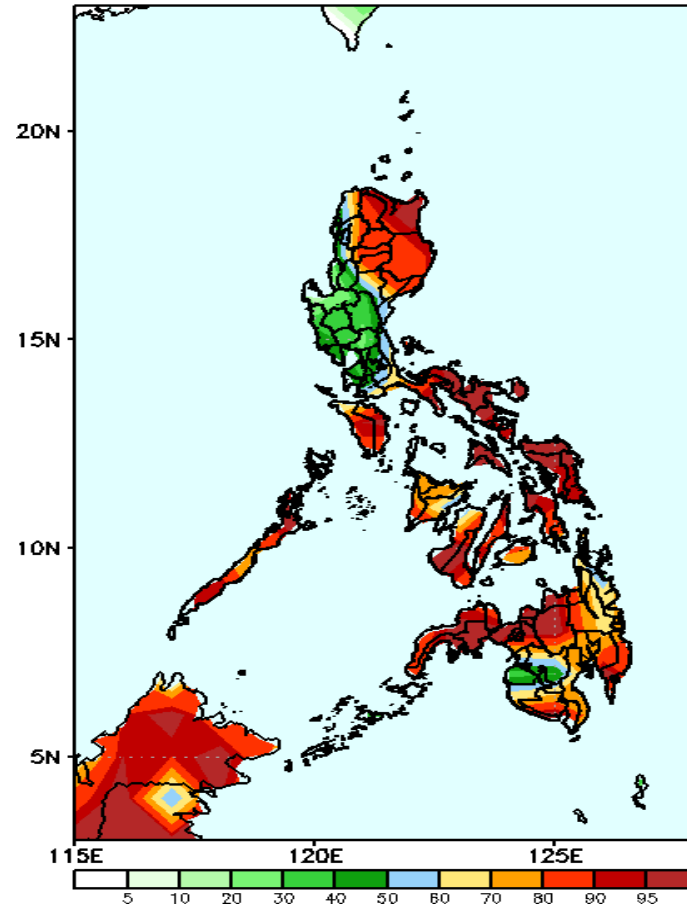
Week 2: Nov 25-Dec 01, 2019

GEFS Week-2 Precip Anomaly
Valid: 20191125 - 20191201



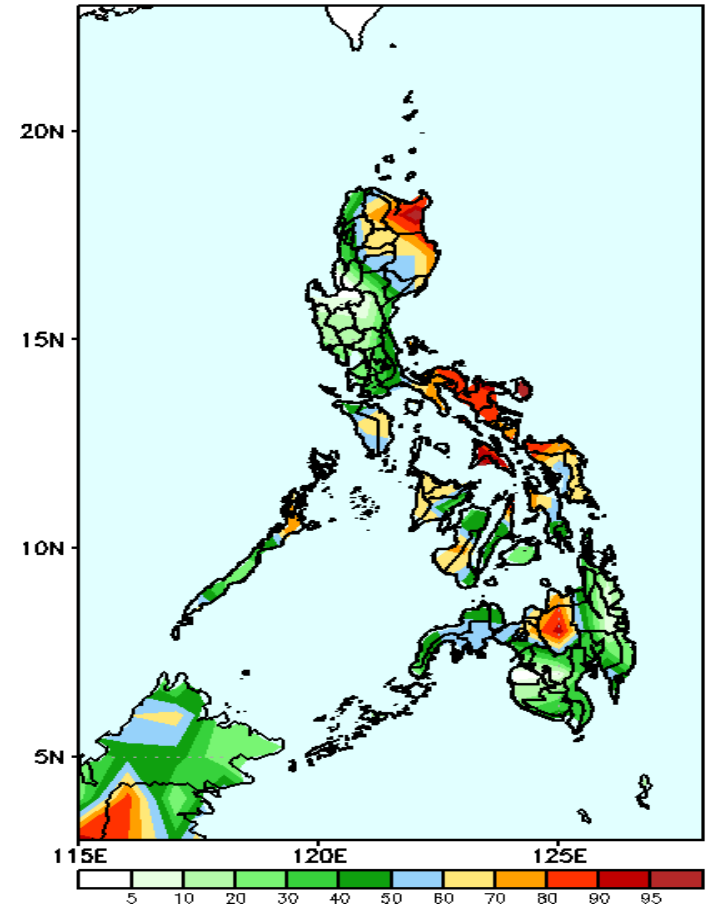
Increased of rainfall up to 60 mm is likely in northeastern Luzon and Visayas. The rest of the country to receive below average rainfall.

GEFS Week-2 Exceedance Prob. > 25mm
Valid: 20191125 - 20191201



High probabilities for rainfall exceeding 25mm in most parts of the country except in southern parts of Luzon.

GEFS Week-2 Exceedance Prob. > 50mm
Valid: 20191125 - 20191201

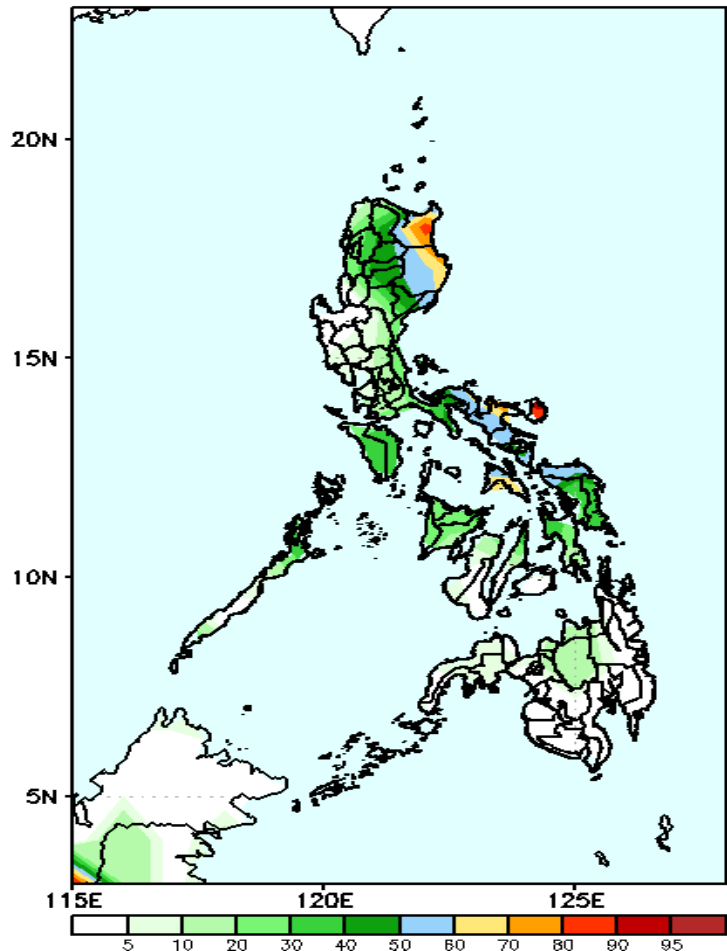


High probabilities for rainfall exceeding 50mm in northeastern Luzon, eastern Visayas and Region X, while less likely for the rest of the country.

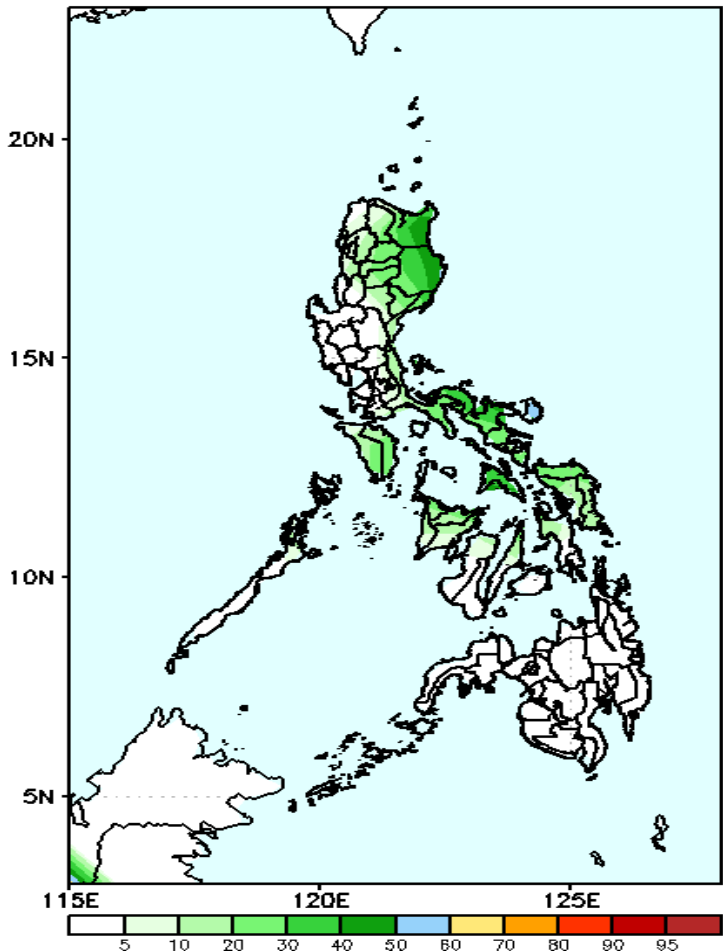
Exceedance Probability > 100/150/200 mm

Week 2: Nov 25-Dec 01, 2019

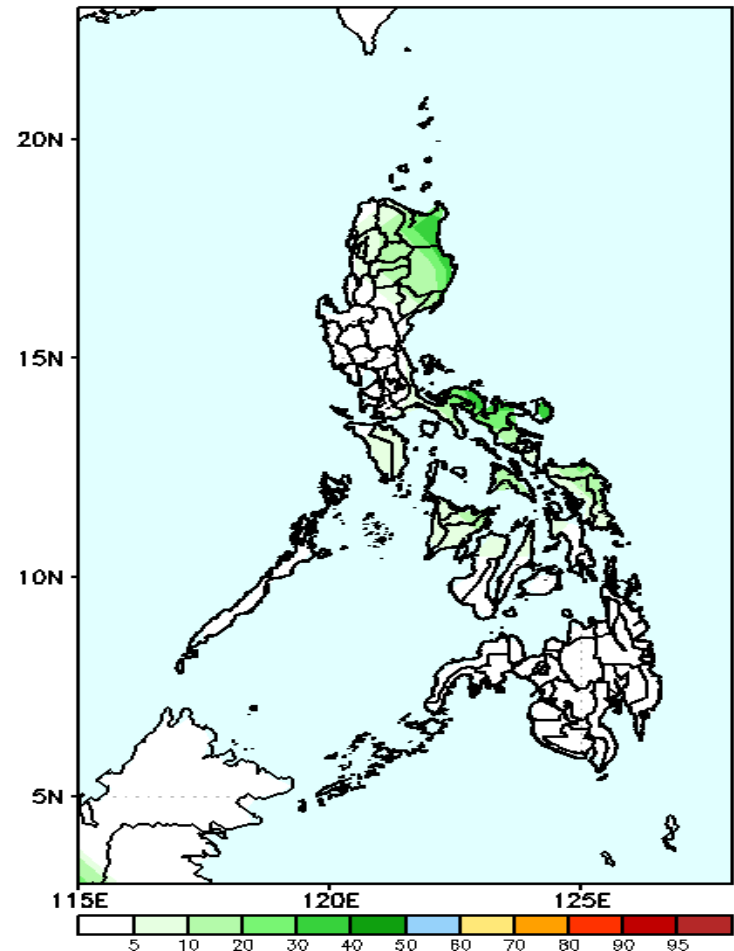
GEFS Week-2 Exceedance Prob. > 100mm GEFS Week-2 Exceedance Prob. > 150mm GEFS Week-2 Exceedance Prob. > 200mm
Valid: 20191125 – 20191201 Valid: 20191125 – 20191201 Valid: 20191125 – 20191201



Less probability of rainfall to exceed 100mm in most parts of the country except in the northeastern parts of Luzon and Bicol region with 50-80% chance to exceed 100mm rainfall.



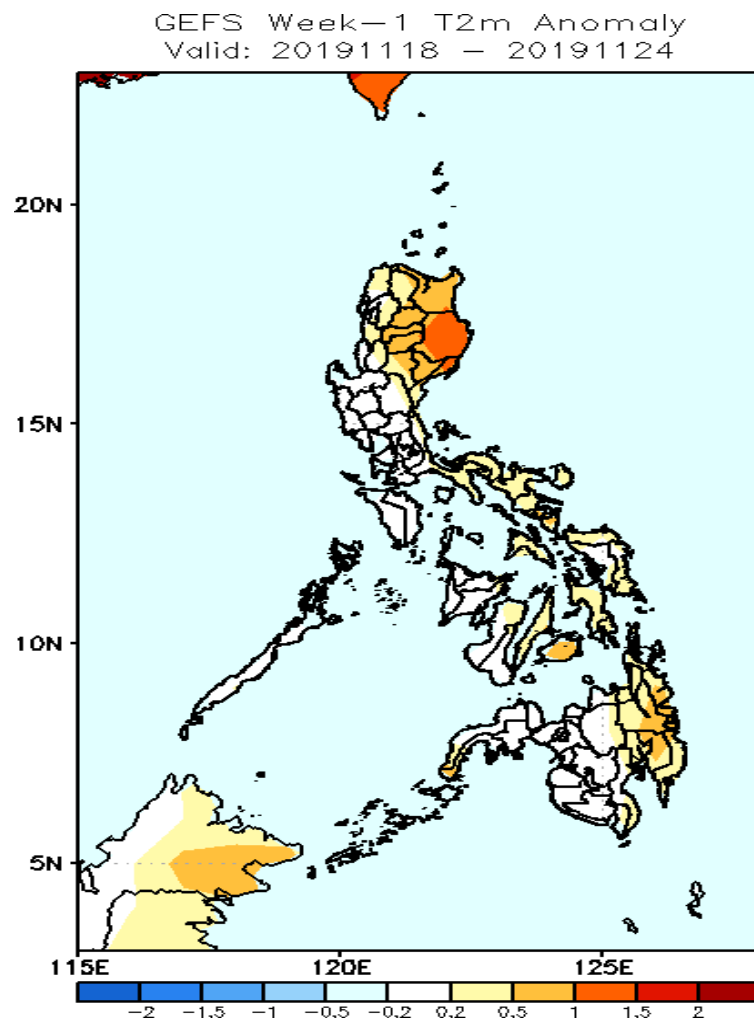
Less than 50% probability of rainfall to exceed 150 mm in most parts of the country.



Less probability of rainfall to exceed 200 mm in most parts of the country during the forecast period.

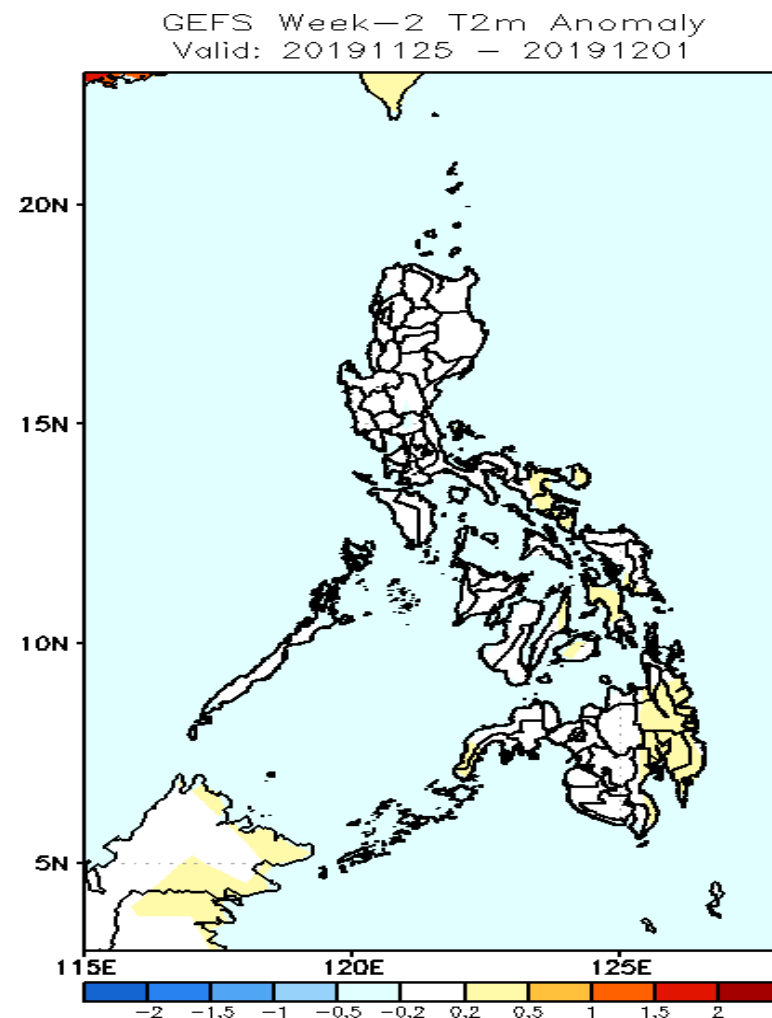


GEFS Week-1 & 2 Forecasts: T2m Anomaly



2m Temperature Week1 (Nov 18-24, 2019)

Slightly warmer to warmer than average surface air temperature will likely experience in the eastern part of the country while average temperature for the rest of the country.



2m Temperature Week 2: Nov 25-Dec01, 2019

Average surface air temperature will likely experience in most of the country.