



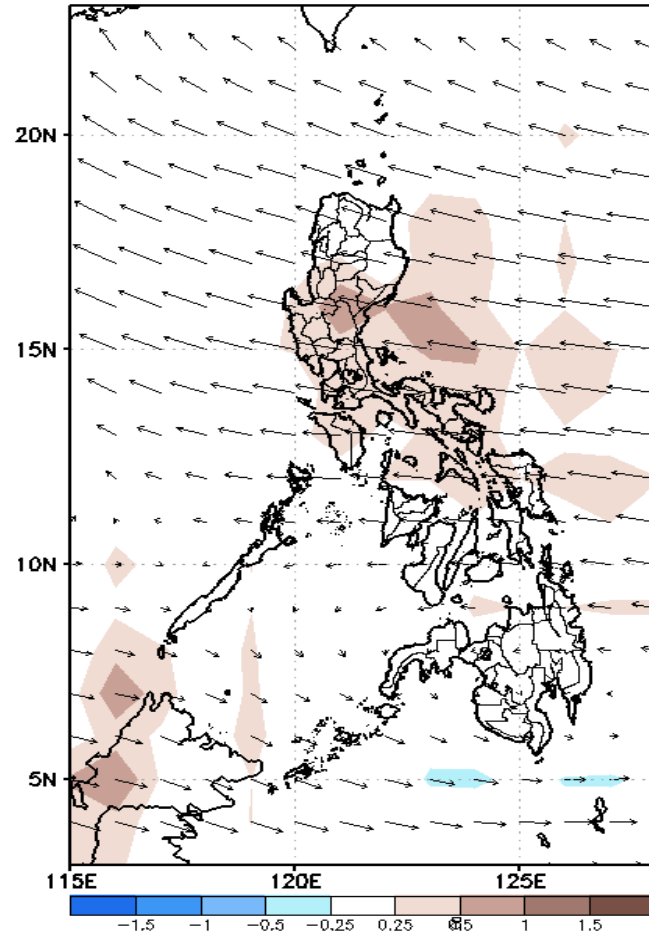
Week 1 & Week 2 Forecast for the Philippines using GEFS Model



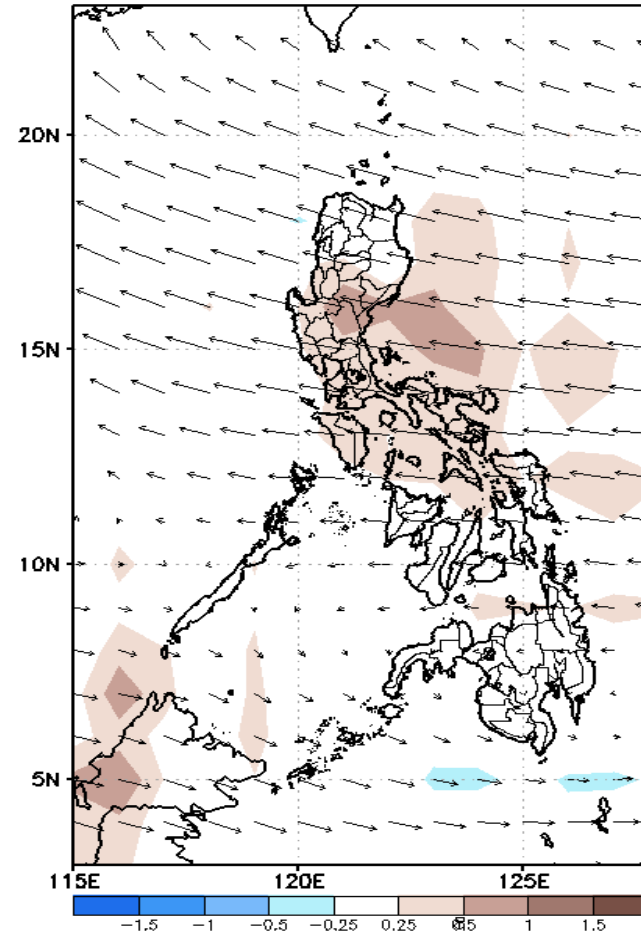
GEFS Week-1 Forecasts: Wind Anomaly Forecast

Week 1: Jul 15 - Jul 21, 2022

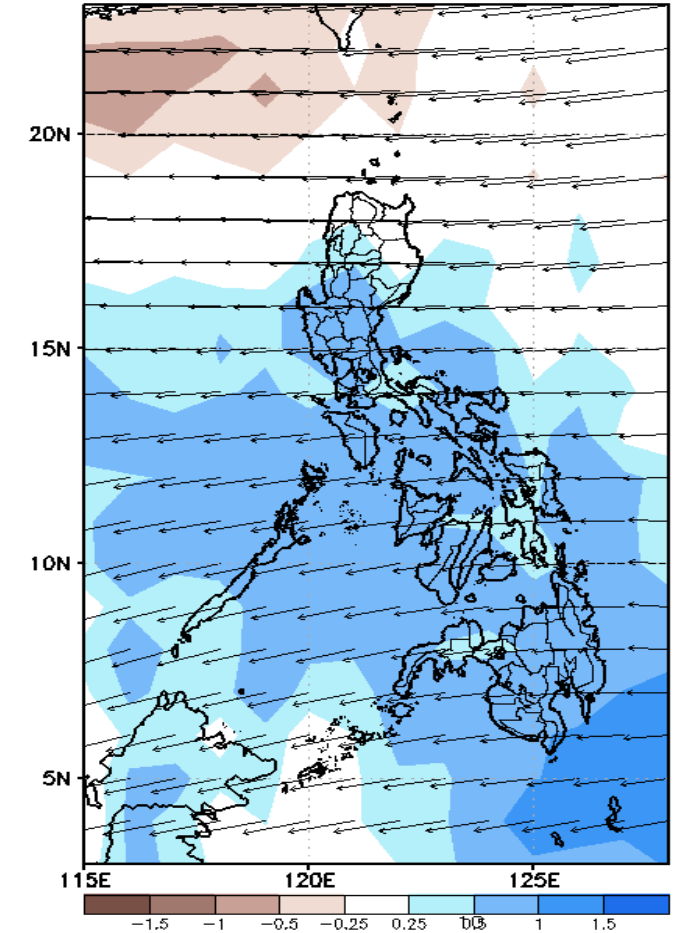
GEFS Week-1 850-hPa Divergence and Wind Anom
Valid: 20220718 - 20220724



GEFS Week-1 700-hPa Divergence and Wind Anom
Valid: 20220718 - 20220724



Week-1 200-hPa Divergence and Wind Anom
Valid: 20220718 - 20220724

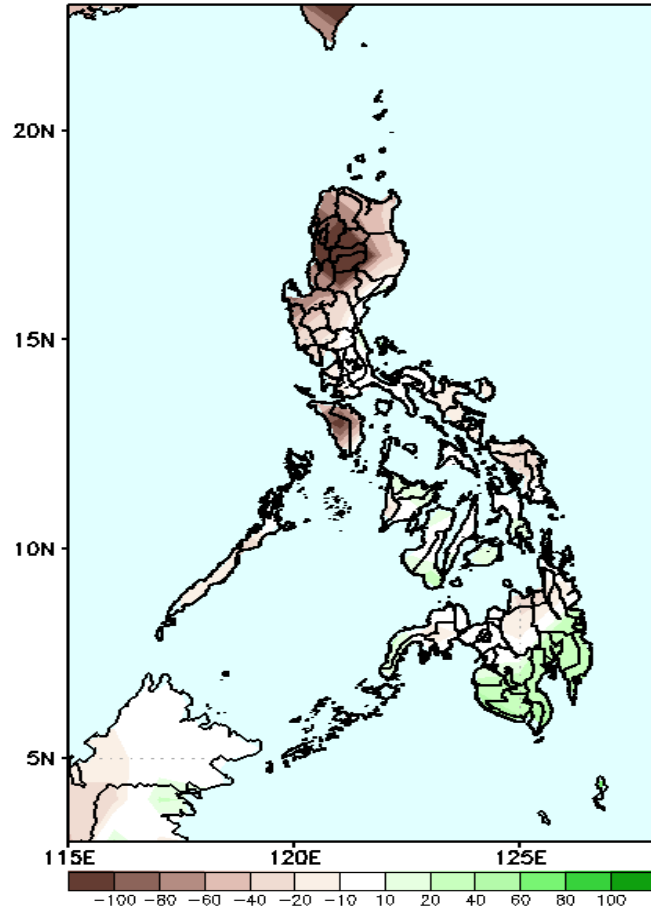


Westerly windflow affecting Southern Mindanao while Easterlies affecting the rest of the country during the forecast period.

Precipitation Anomaly and Exceedance Probability > 25/50 mm

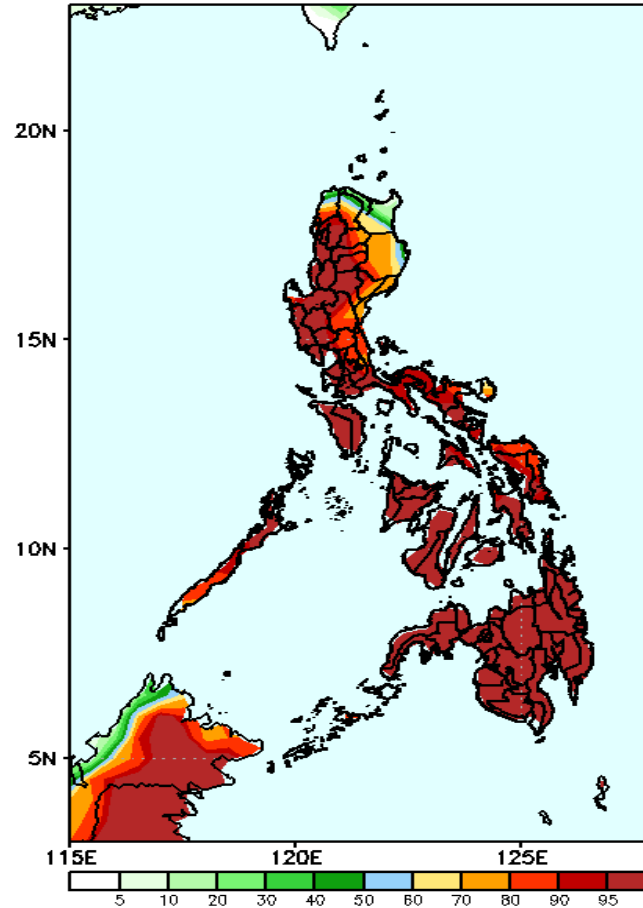
Week 1: Jul 15 - Jul 21, 2022

GEFS Week-1 Precip Anomaly
Valid: 20220718 - 20220724



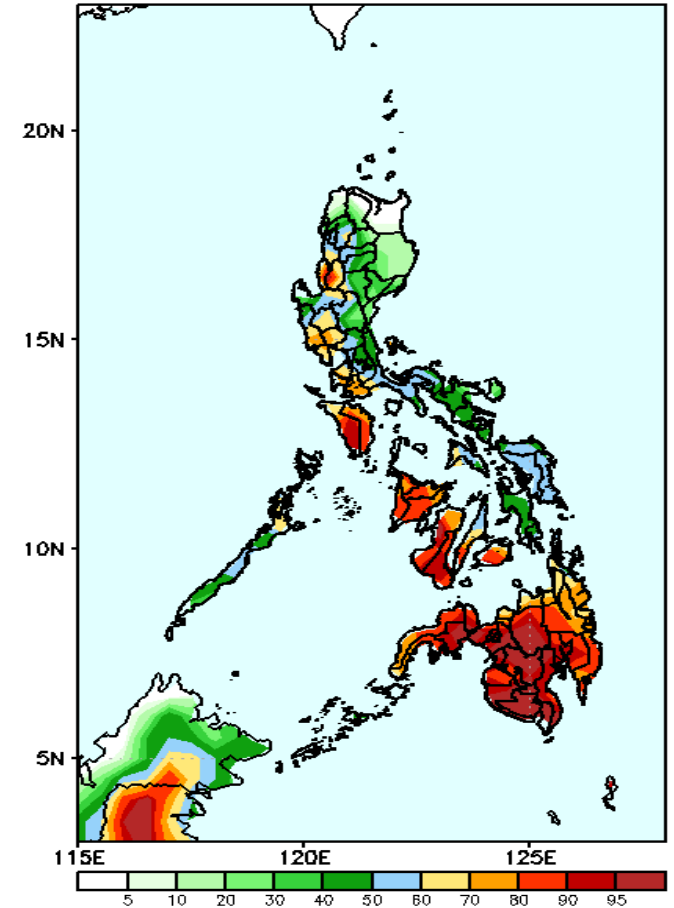
Rainfall deficit of more than 100mm is expected in Ilocos & Cordillera Region & Mindoro, 40-80mm for the rest of the country except in southern Mindanao (20-60mm increase of rainfall) during the forecast period.

GEFS Week-1 Exceedance Prob. > 25mm
Valid: 20220718 - 20220724



High probability of rainfall to exceed 25mm in most parts of the country during the forecast period.

GEFS Week-1 Exceedance Prob. > 50mm
Valid: 20220718 - 20220724

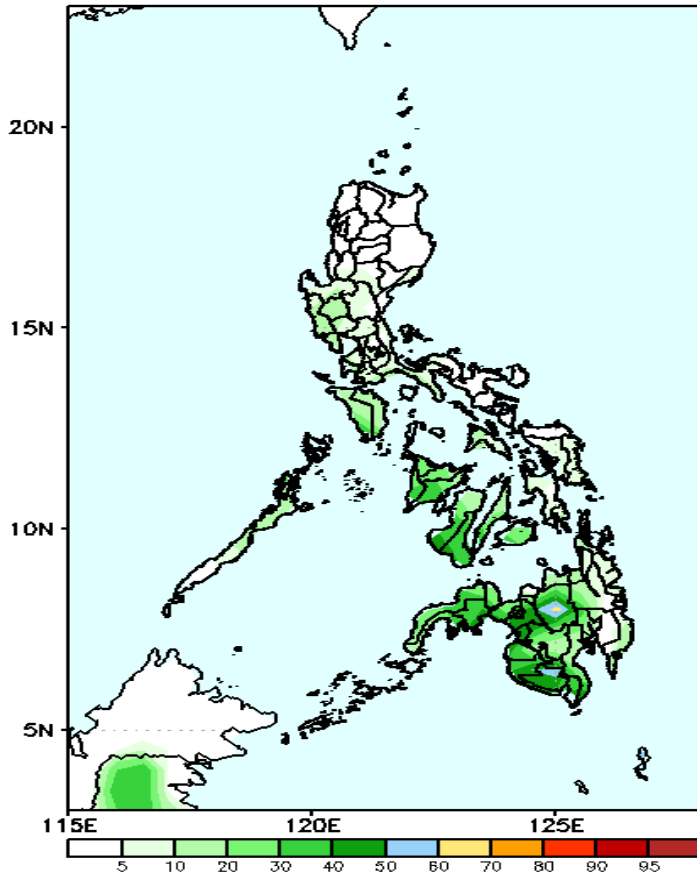


High probability of rainfall to exceed 50mm in western parts of Luzon and Visayas, Cebu, Bohol and most parts of Mindanao while less likely for the rest of the country during the forecast period.

Exceedance Probability > 100/150/200 mm

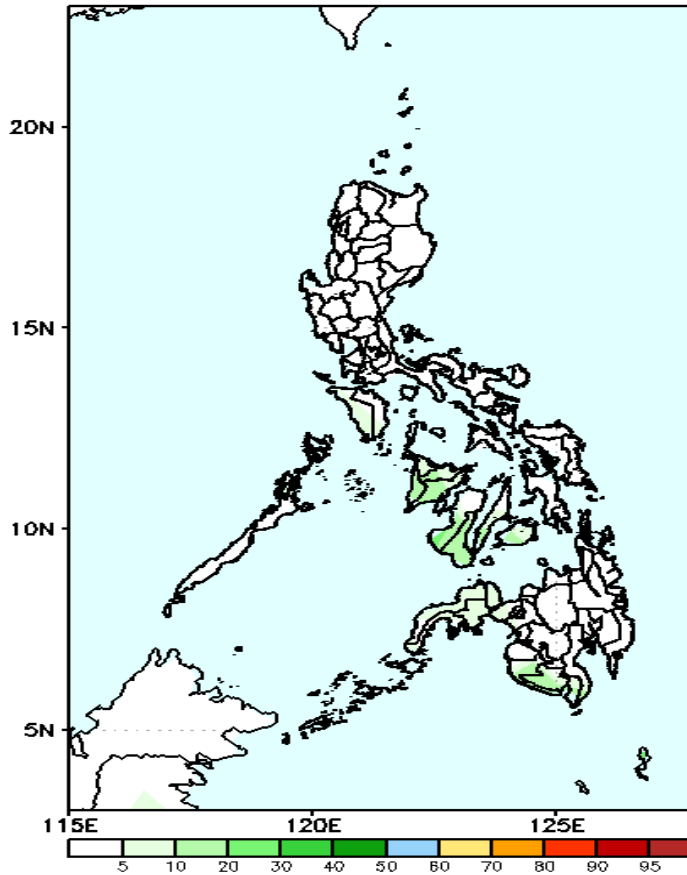
Week 1: Jul 15 - Jul 21, 2022

GEFS Week-1 Exceedance Prob. > 100mm
Valid: 20220718 - 20220724



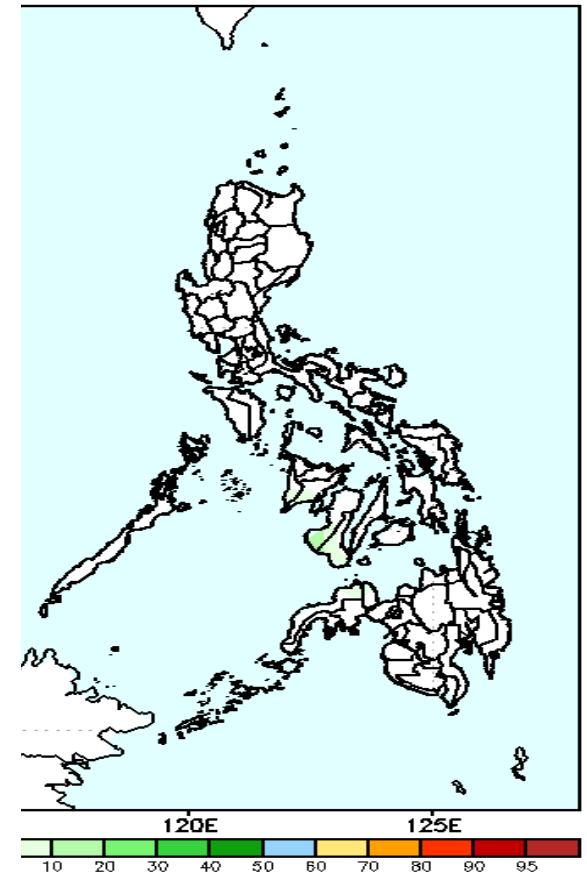
Low probability of rainfall to exceed 100mm in most parts of the country during the forecast period.

GEFS Week-1 Exceedance Prob. > 150mm
Valid: 20220718 - 20220724



Low probability of rainfall to exceed 150mm in most parts of the country during the forecast period.

Week-1 Exceedance Prob. > 200mm
Valid: 20220718 - 20220724

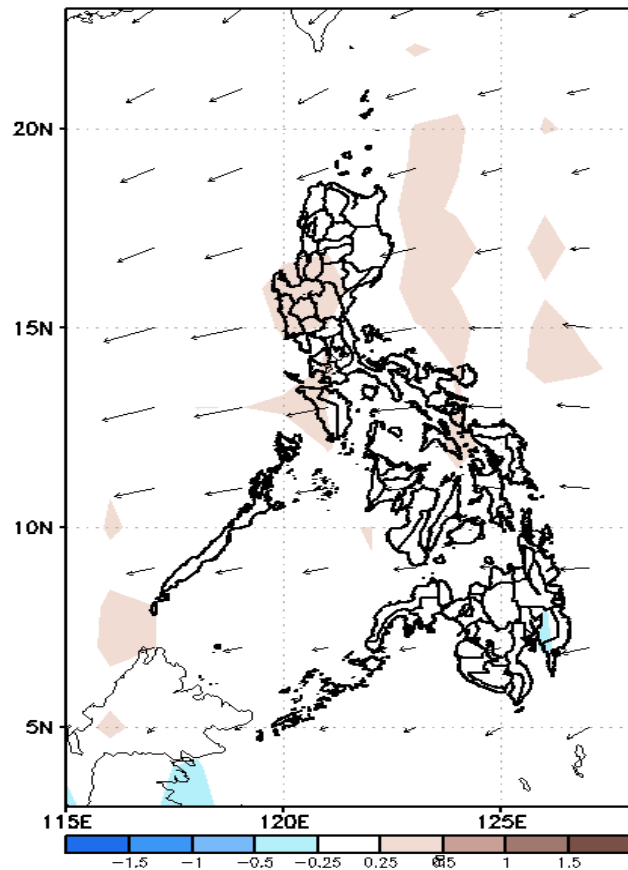


Low probability of rainfall to exceed 200mm in most parts of the country during the forecast period.

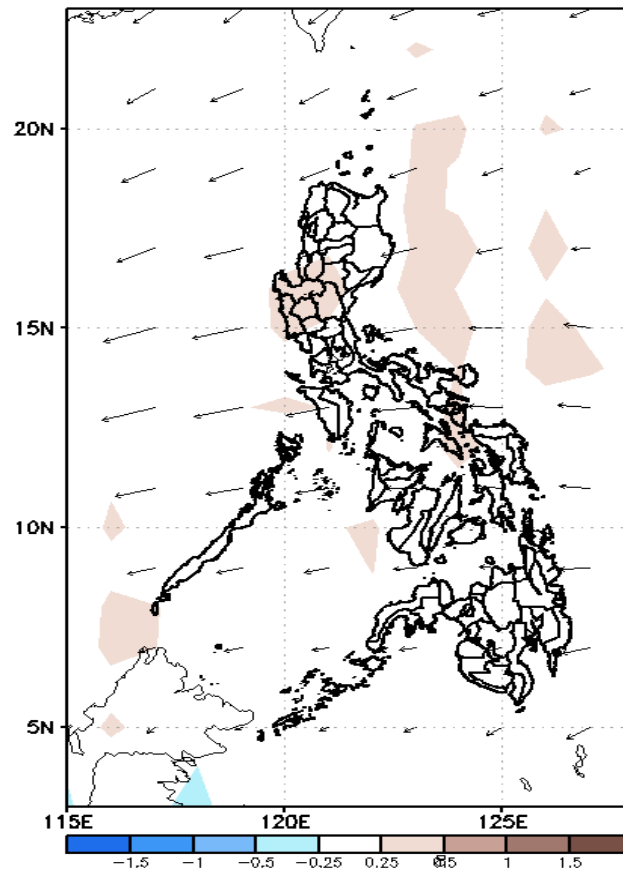
GEFS Week-2 Forecasts: Wind Anomaly Forecast

Week 2: Jul 22 - Jul 28, 2022

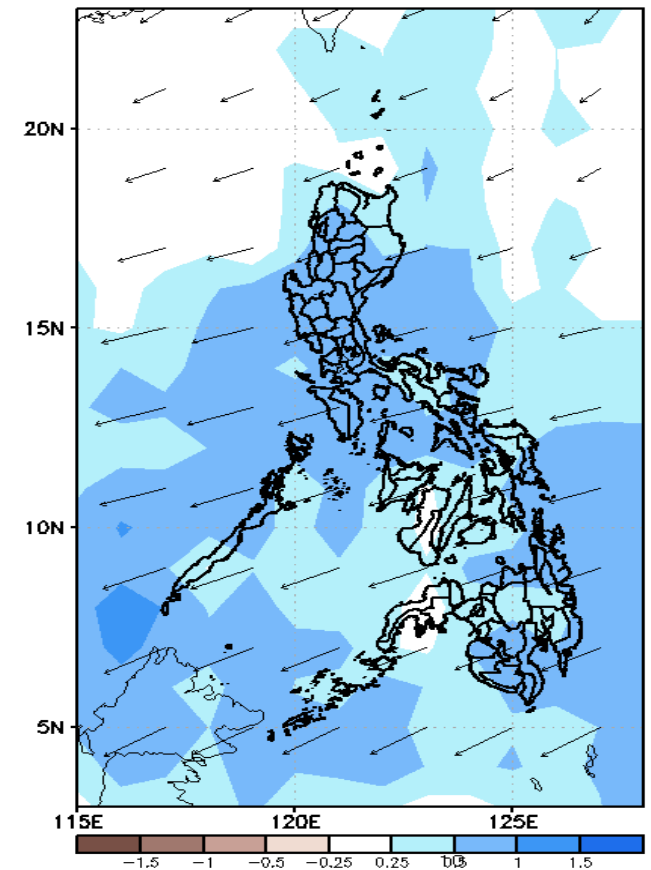
GEFS Week-2 850-hPa Divergence and Wind Anom.
Valid: 20220725 - 20220731



GEFS Week-2 700-hPa Divergence and Wind Anom.
Valid: 20220725 - 20220731



GEFS week-2 200-hPa Divergence and Wind Anom.
Valid: 20220725 - 20220731

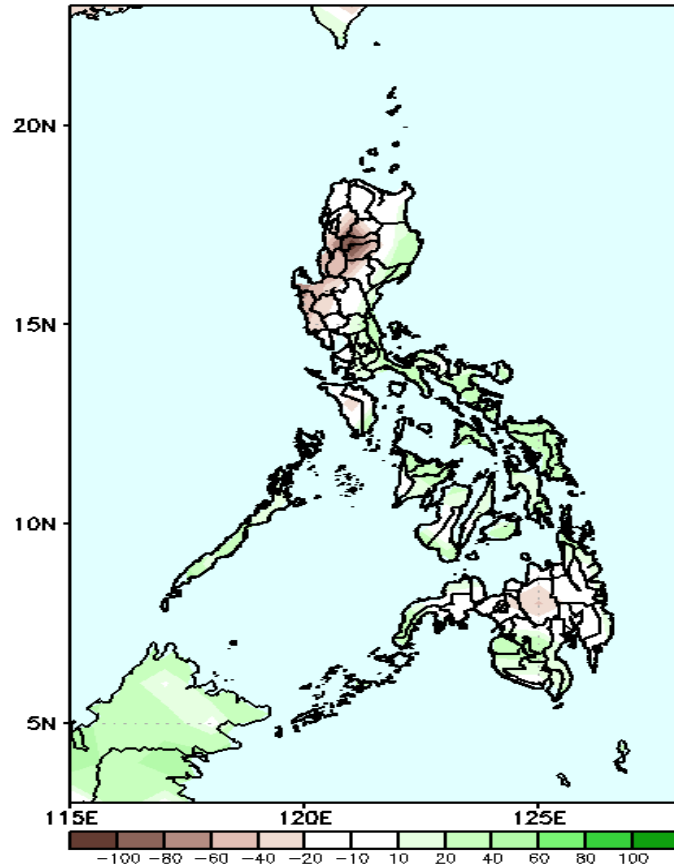


Easterlies affecting most parts of the country during the forecast period.

Precipitation Anomaly and Exceedance Probability > 25/50 mm

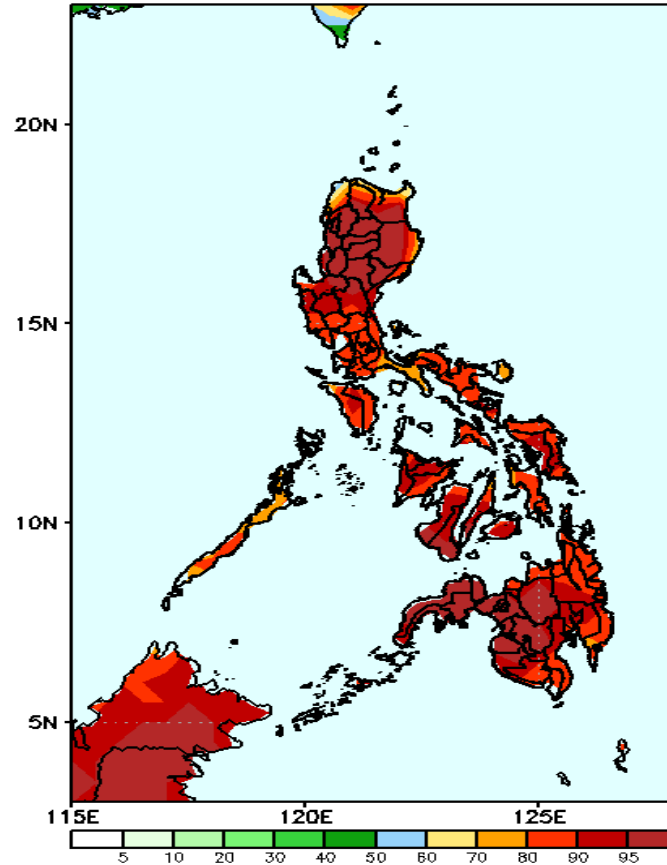
Week 2: Jul 22 - Jul 28, 2022

GEFS Week-2 Precip Anomaly
Valid: 20220725 - 20220731



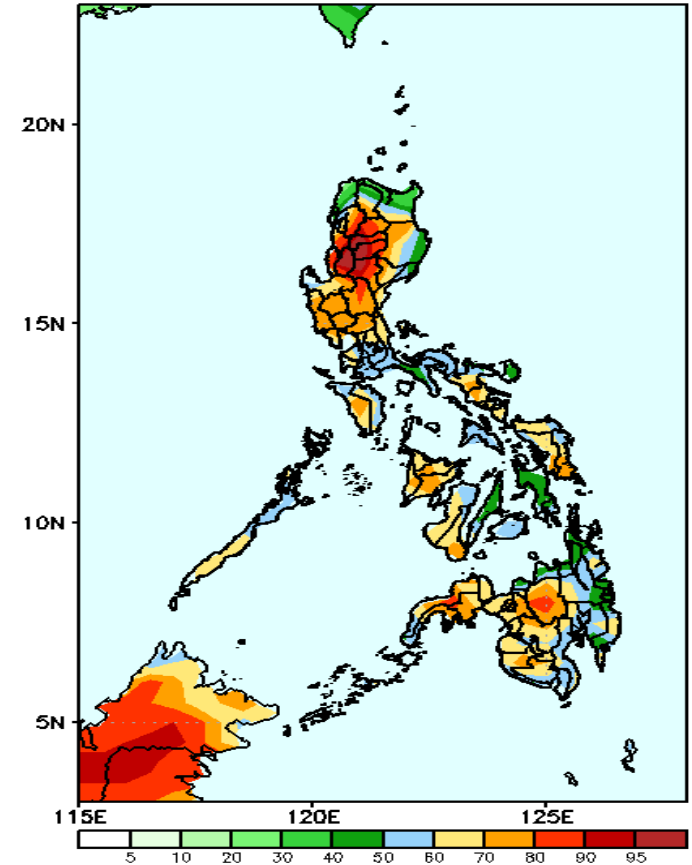
Rainfall deficit of 40-80mm is expected in western parts of Luzon(including Kalinga and Mt. Province while increase of rainfall of 40-80mm in most parts of Visayas and Maguindanao during the forecast period .

GEFS Week-2 Exceedance Prob. > 25mm
Valid: 20220725 - 20220731



High probability of rainfall to exceed 25mm in most parts of the country during the forecast period.

GEFS Week-2 Exceedance Prob. > 50mm
Valid: 20220725 - 20220731



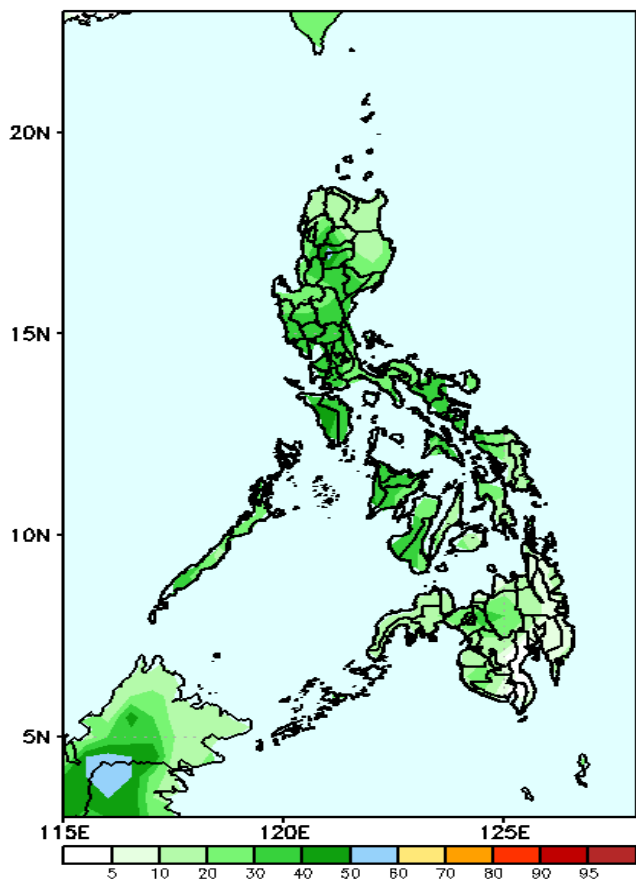
High probability of rainfall to exceed 50mm in most parts of the country except in some areas in northern Luzon, central Visayas and eastern Mindanao.



Exceedance Probability > 100/150/200 mm

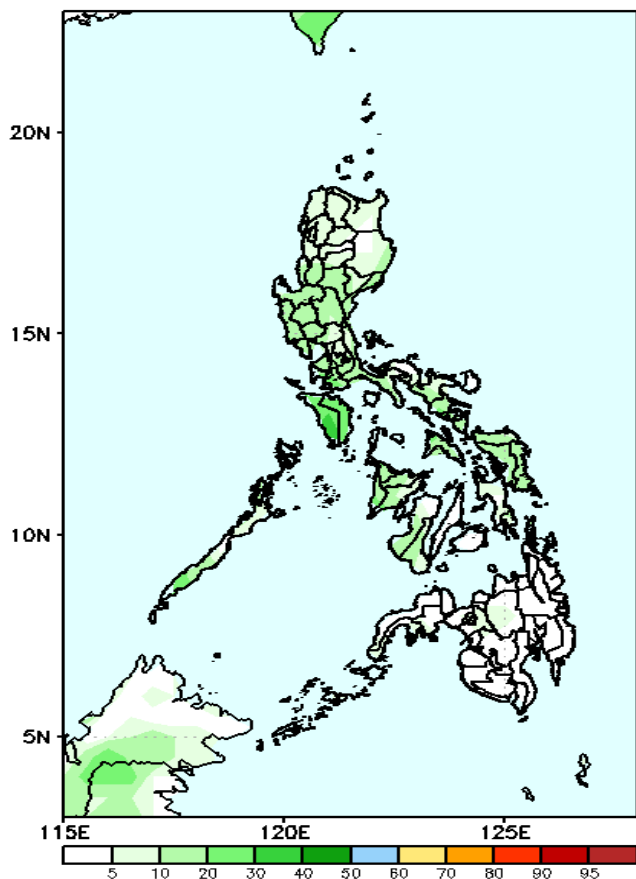
Week 2: Jul 22 - Jul 28, 2022

GEFS Week-2 Exceedance Prob. > 100mm
Valid: 20220725 - 20220731



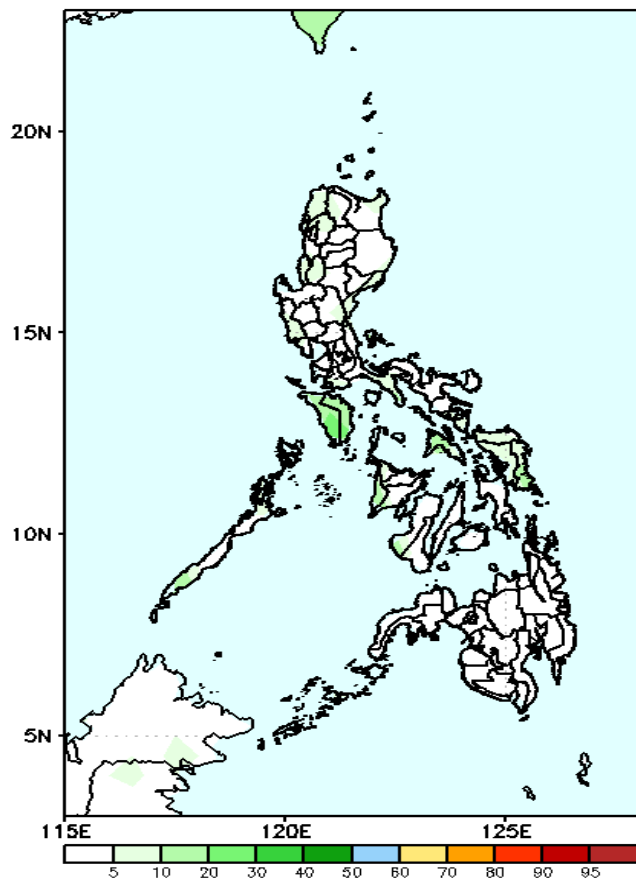
Low probability of rainfall to exceed 100mm in most parts of the country during the forecast period.

GEFS Week-2 Exceedance Prob. > 150mm
Valid: 20220725 - 20220731



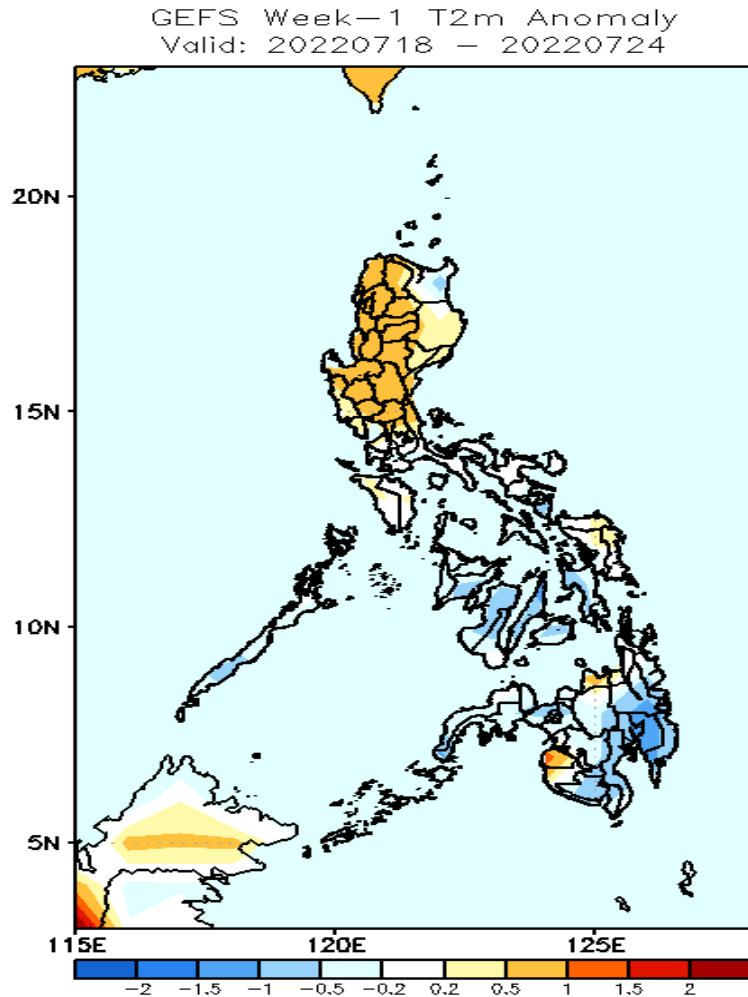
Low probability of rainfall to exceed 150mm in most parts of the country during the forecast period.

GEFS Week-2 Exceedance Prob. > 200mm
Valid: 20220725 - 20220731



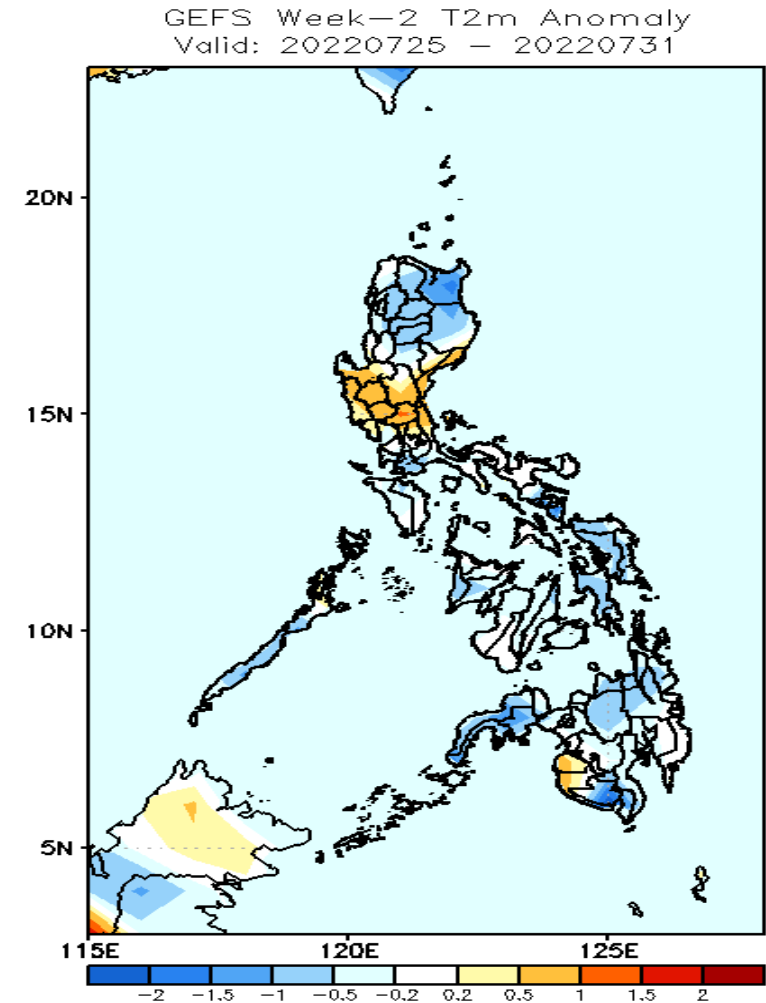
Low probability of rainfall to exceed 200mm in most parts of the country during the forecast period.

GEFS Week-1 & 2 Forecasts: T2m Anomaly



2m Temperature Week 1: Jul 18 - Jul 24, 2022

Slightly warmer than average surface air temperature will likely experience in most parts of Luzon while near to slightly cooler than average surface air temperature in Visayas and Mindanao (except Davao Region – cooler than average) during the forecast period.



2m Temperature Week 2: Jul 25 - Jul 31, 2022

Near to cooler than average surface air temperature will likely experience in most parts of the country except Pangasinan, most parts of Central Luzon, Maguindanao and Sultan Kudarat where warmer than average surface air temperature will be likely during the forecast period.