



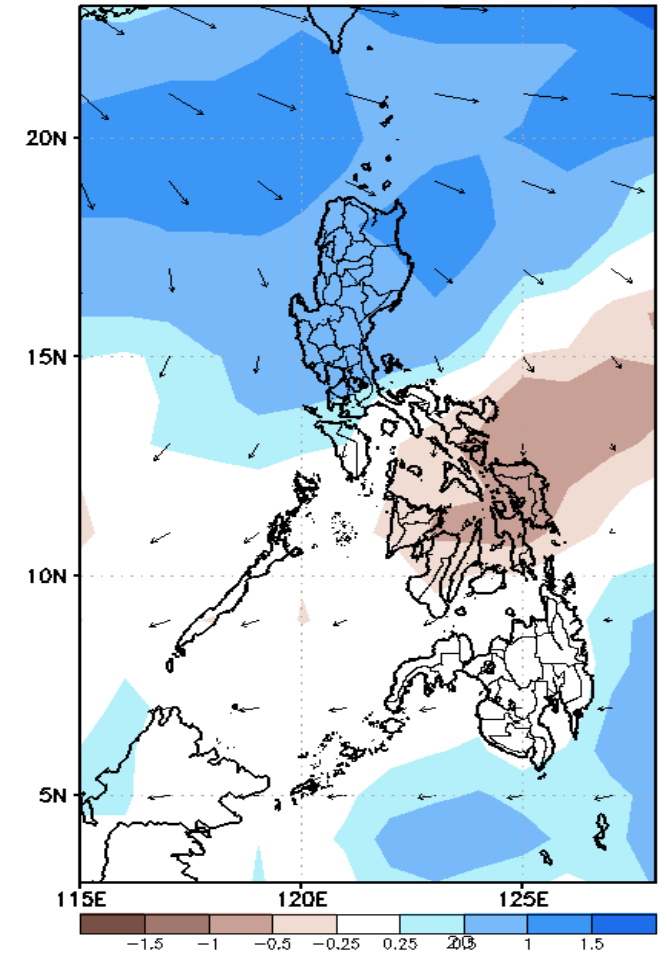
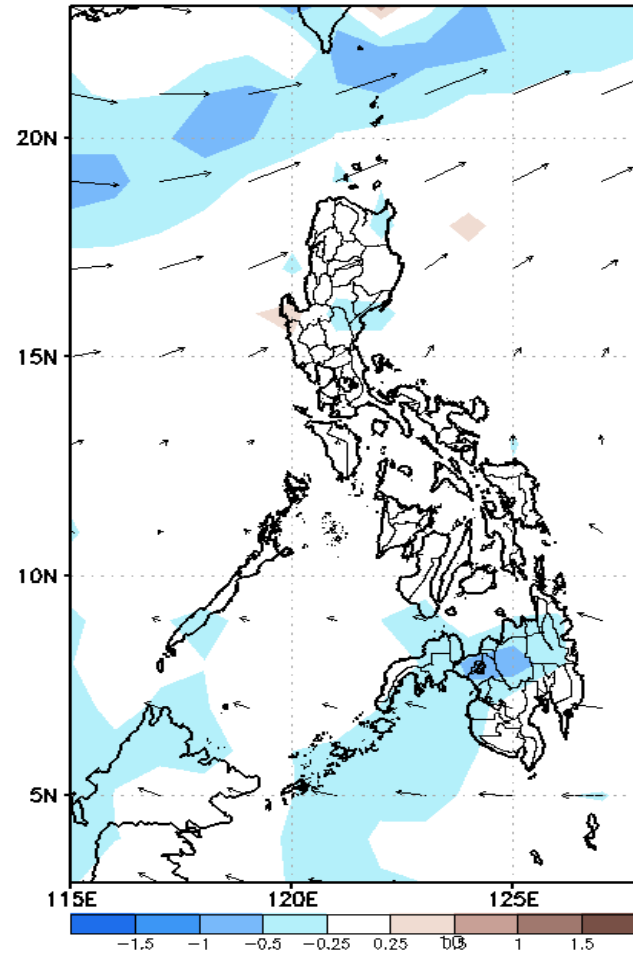
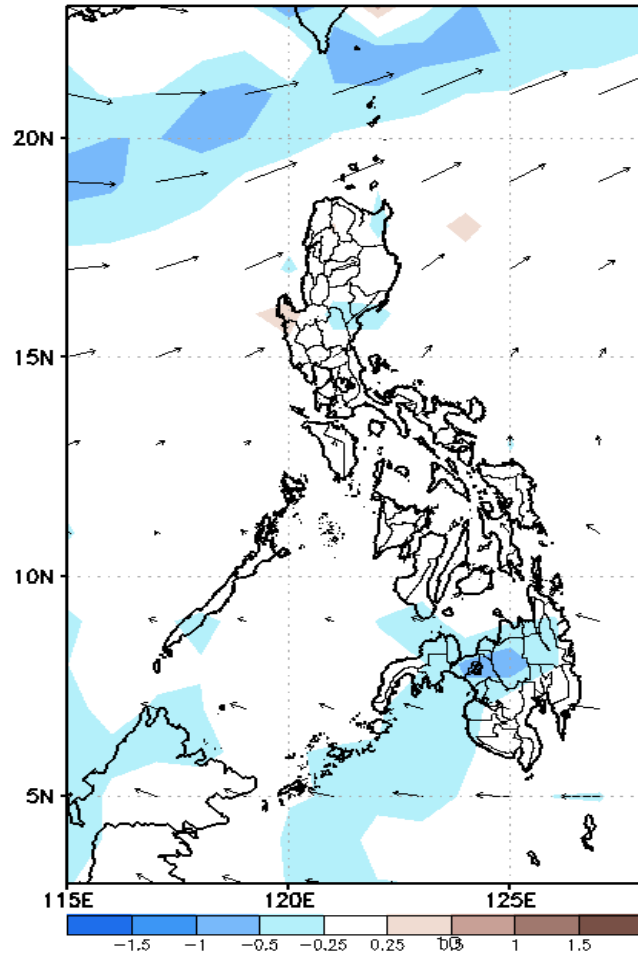
Week 1 & Week 2 Forecast for the Philippines using GEFS Model



GEFS Week-1 Forecasts: Divergence & Wind Anomaly

Week 1: May 18-24, 2020

GEFS Week-1 850-hPa Divergence and Wind Anom Valid: 20200518 - 20200524

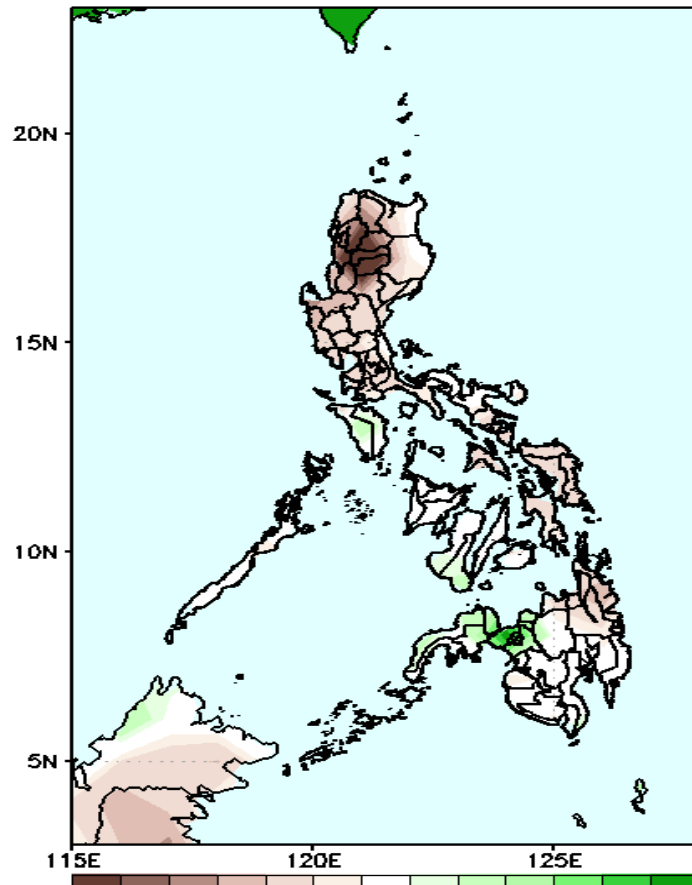


Upper level (750 hPa) Divergence suggest likelihood of precipitation in most parts of Luzon and southern Mindanao. Westerly to southwesterly windflow affecting parts of Luzon while easterlies affecting most parts of the country during the forecast period.

Precipitation Anomaly and Exceedance Probability > 25/50 mm

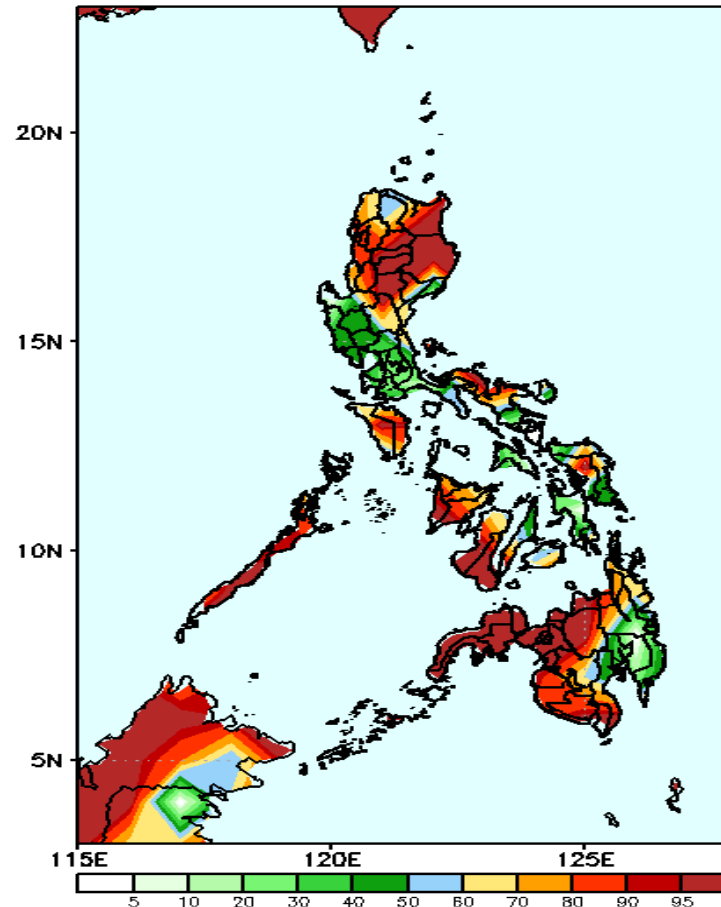
Week 1: May 18-24, 2020

GEFS Week-1 Precip Anomaly
Valid: 20200518 - 20200524



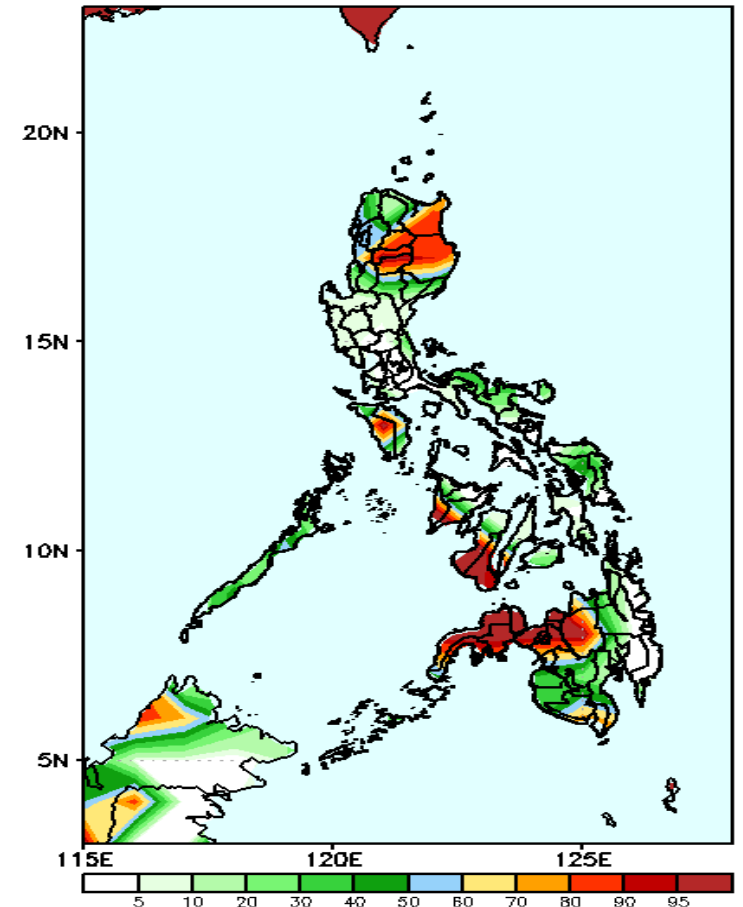
Rainfall deficit of 30-100mm in Luzon and eastern parts of Visayas and Mindanao is expected while 10-60mm increase of rainfall in Lanao provinces and Misamis Occ. during the forecast period.

GEFS Week-1 Exceedance Prob. > 25mm
Valid: 20200518 - 20200524



High probability of rainfall to exceed 25mm in northern and central parts of Luzon, Mindoro, Palawan, Bicol Region, in most parts of Visayas and Northern and western Mindanao while less likely for the rest of the country during the forecast period.

GEFS Week-1 Exceedance Prob. > 50mm
Valid: 20200518 - 20200524

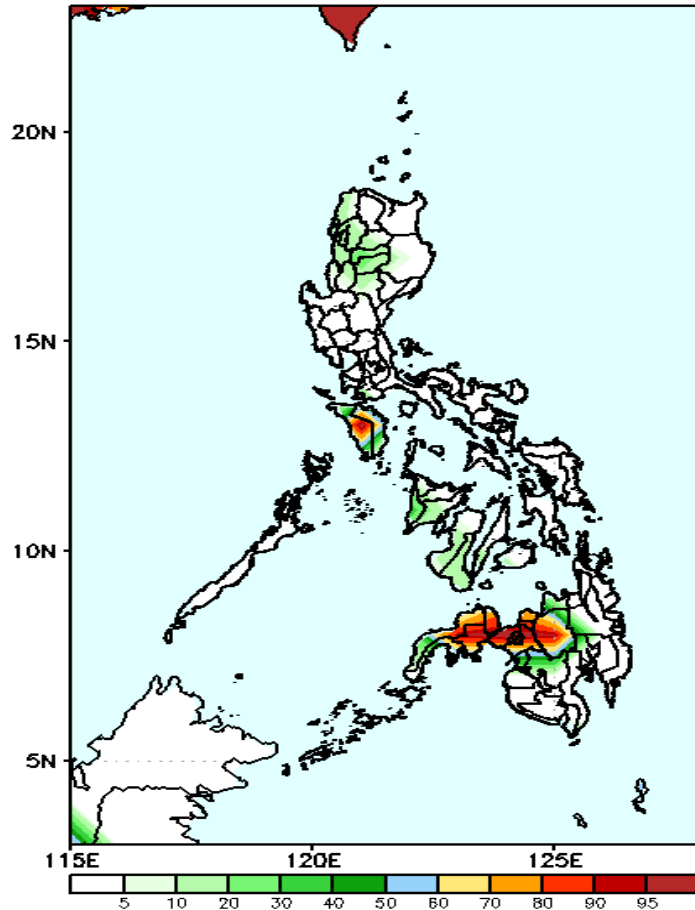


High probability of rainfall to exceed 50mm in most parts of Cagayan Valley and CAR, Mindoro, western part of Visayas, northern Mindanao and Zamboanga Peninsula while less likely for the rest of the country during the forecast period.

Exceedance Probability > 100/150/200 mm

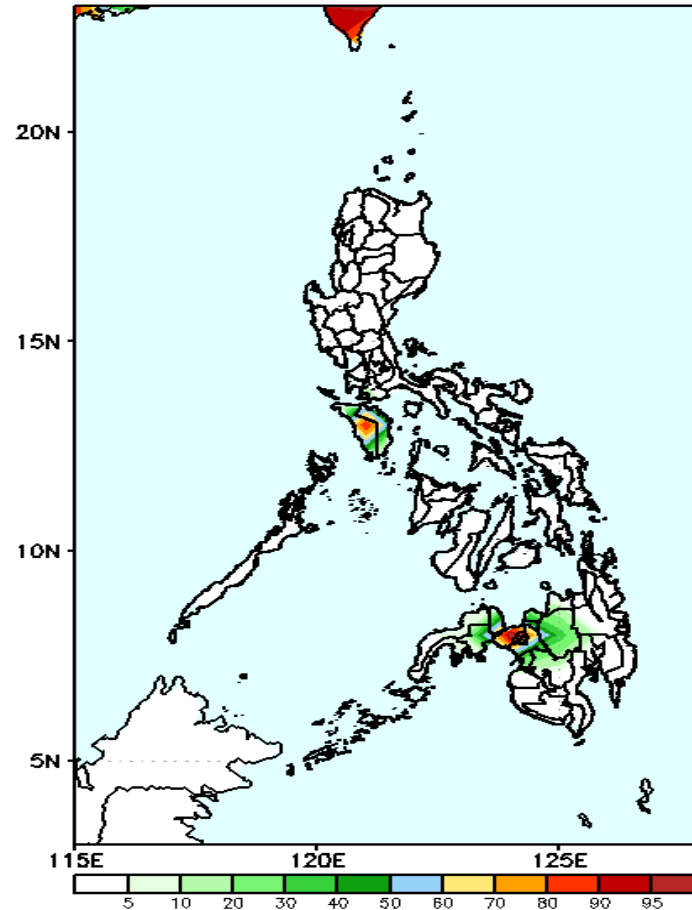
Week 1: May 18-24, 2020

GEFS Week-1 Exceedance Prob. > 100mm
Valid: 20200518 - 20200524



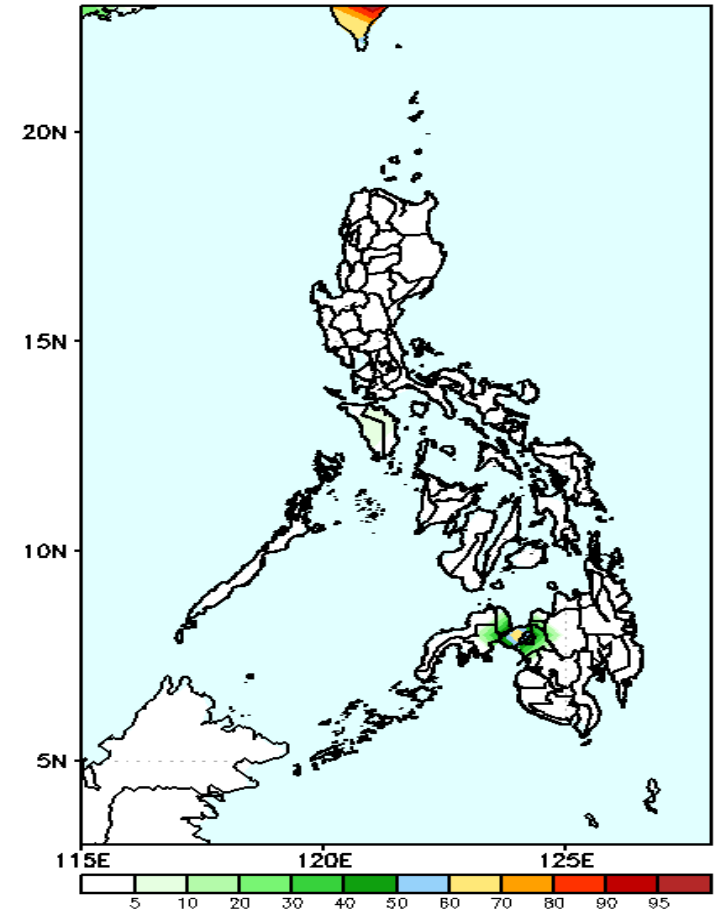
High probability of rainfall to exceed 100mm in Mindoro, Bukidnon, Lanao provinces and Zamboanga del Sur and del Norte while less likely for the rest of the country during the forecast period.

GEFS Week-1 Exceedance Prob. > 150mm
Valid: 20200518 - 20200524



60-90% probability of rainfall to exceed 150mm in Mindoro and Lanao provinces while less likely for the rest of the country during the forecast period.

GEFS Week-1 Exceedance Prob. > 200mm
Valid: 20200518 - 20200524



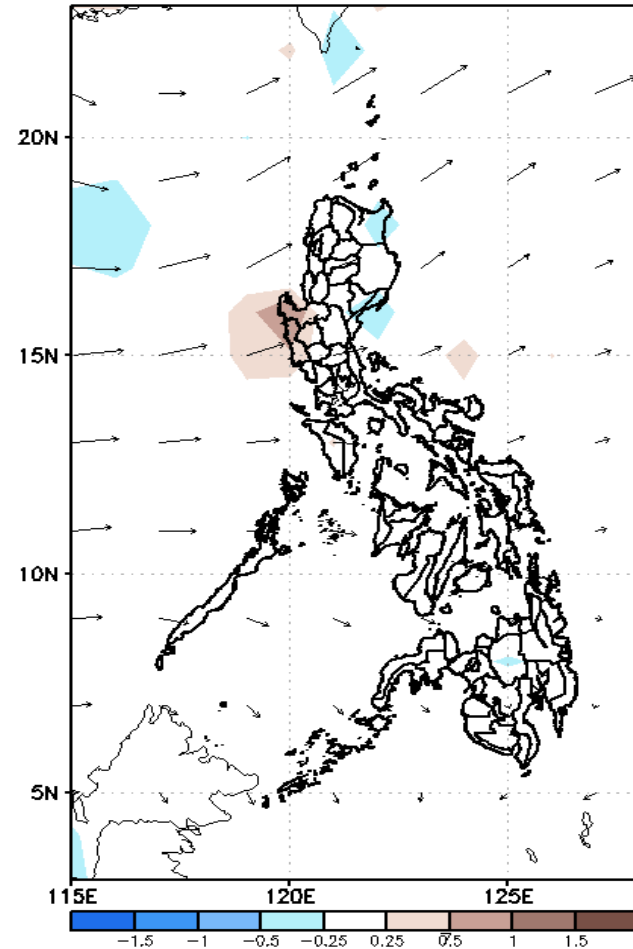
Less probability of rainfall to exceed 200mm in most parts of the country during the forecast period.



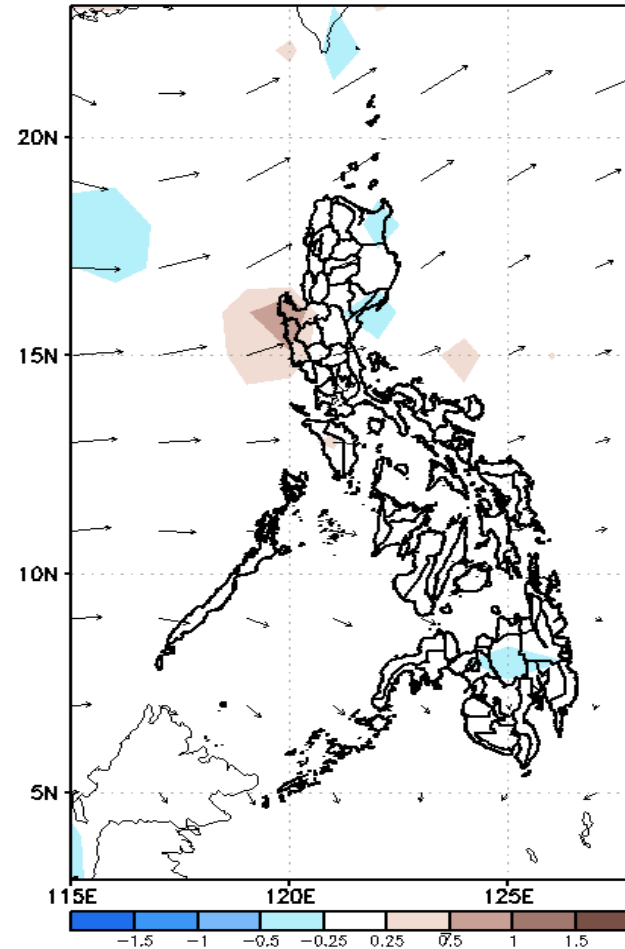
GEFS Week-2 Forecasts: Divergence & Wind Anomaly

Week 2: May 25-31, 2020

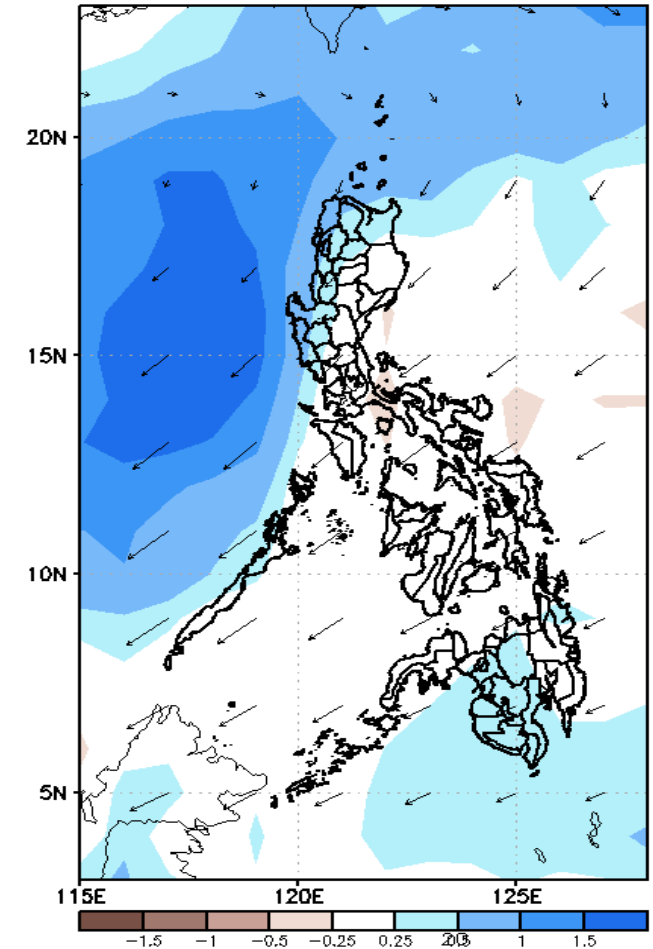
GEFS Week-2 850-hPa Divergence and Wind Anom
Valid: 20200525 - 20200531



GEFS Week-2 700-hPa Divergence and Wind Anom
Valid: 20200525 - 20200531



GEFS week-2 200-hPa Divergence and Wind Anom
Valid: 20200525 - 20200531

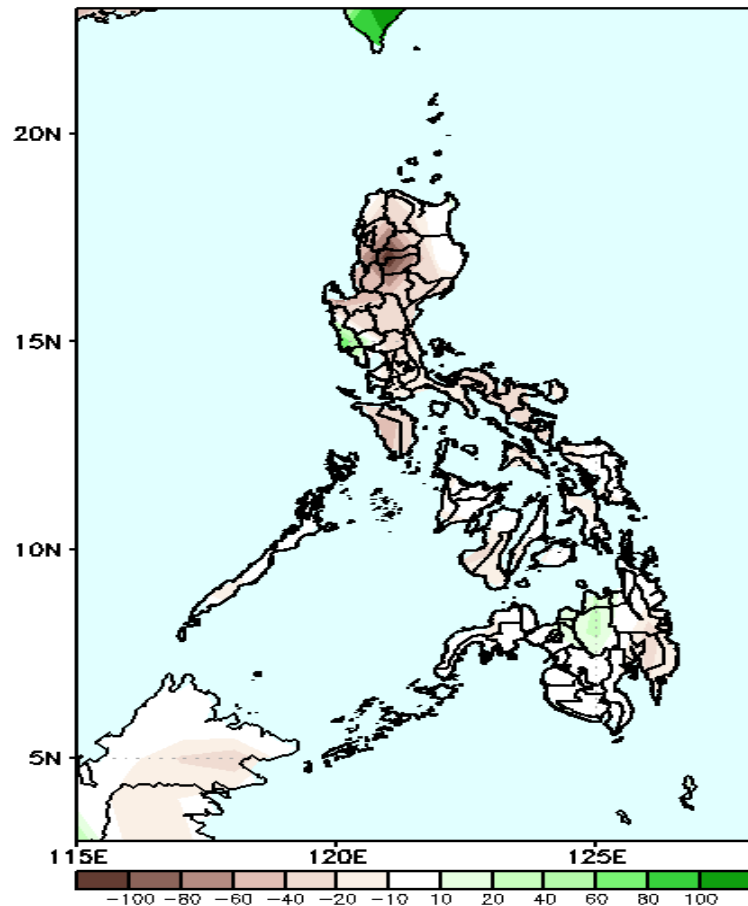


Upper level (750 hPa) Divergence suggest likelihood of precipitation in western Luzon and most parts of Mindanao. Westerly to southwesterly windflow affecting most parts of the country during the forecast period.

Precipitation Anomaly and Exceedance Probability > 25/50 mm

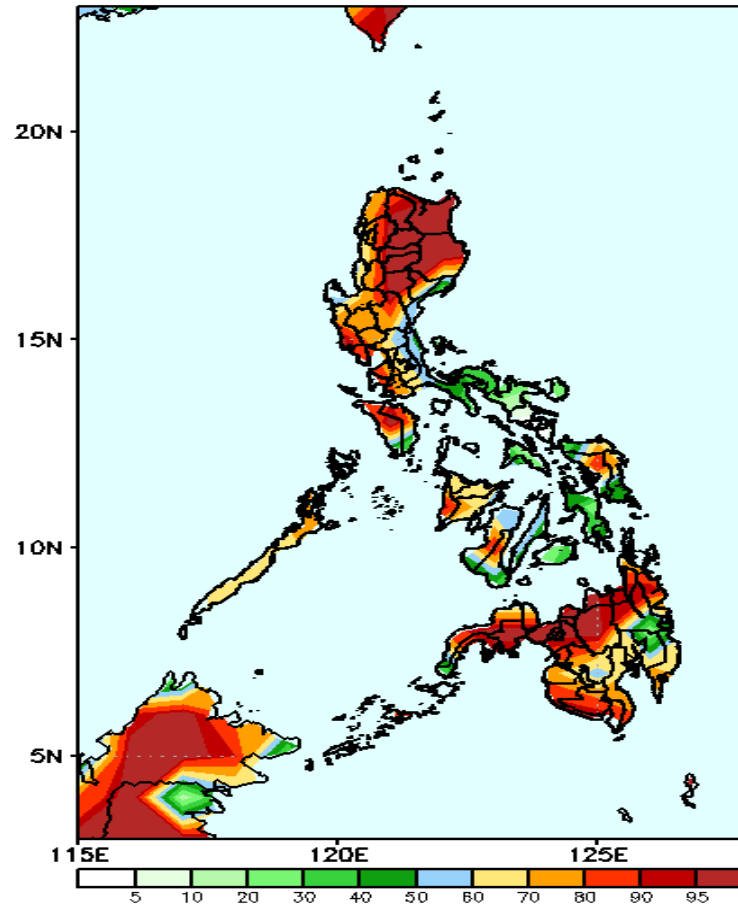
Week 2: May 25-31, 2020

GEFS Week-2 Precip Anomaly
Valid: 20200525 - 20200531



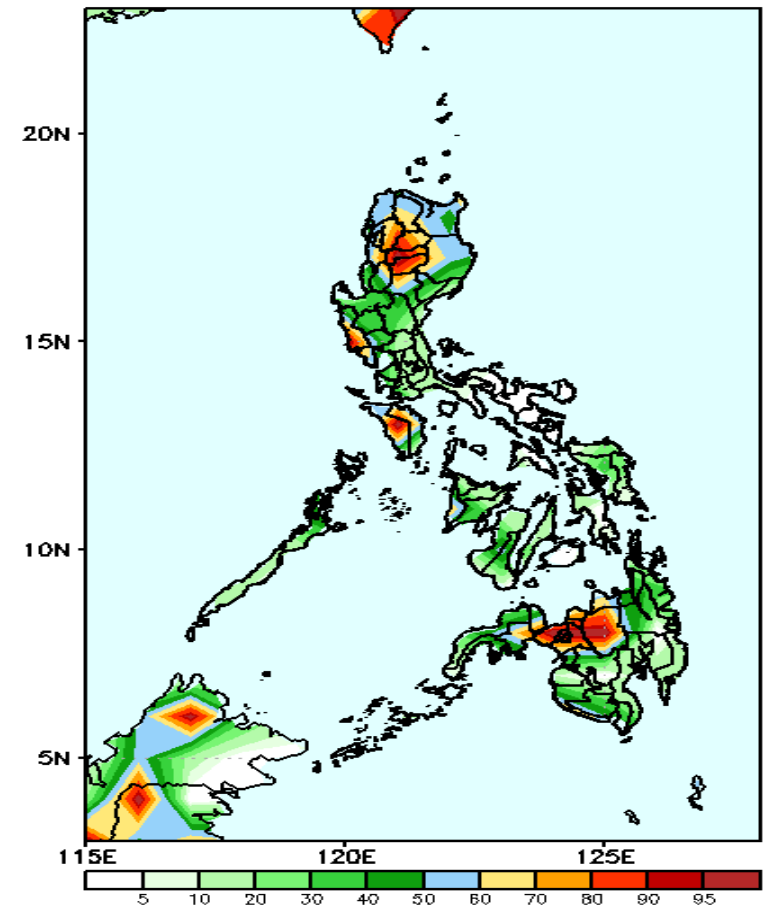
Rainfall deficit of up to 90mm is expected in most parts of Luzon and Visayas and eastern Mindanao is expected during the forecast period. .

GEFS Week-2 Exceedance Prob. > 25mm
Valid: 20200525 - 20200531



High probability of rainfall to exceed 25mm in most parts of the country is expected except in Bicol Region, central Visayas and Compostela Valley where less probability is more likely during the forecast period.

GEFS Week-2 Exceedance Prob. > 50mm
Valid: 20200525 - 20200531

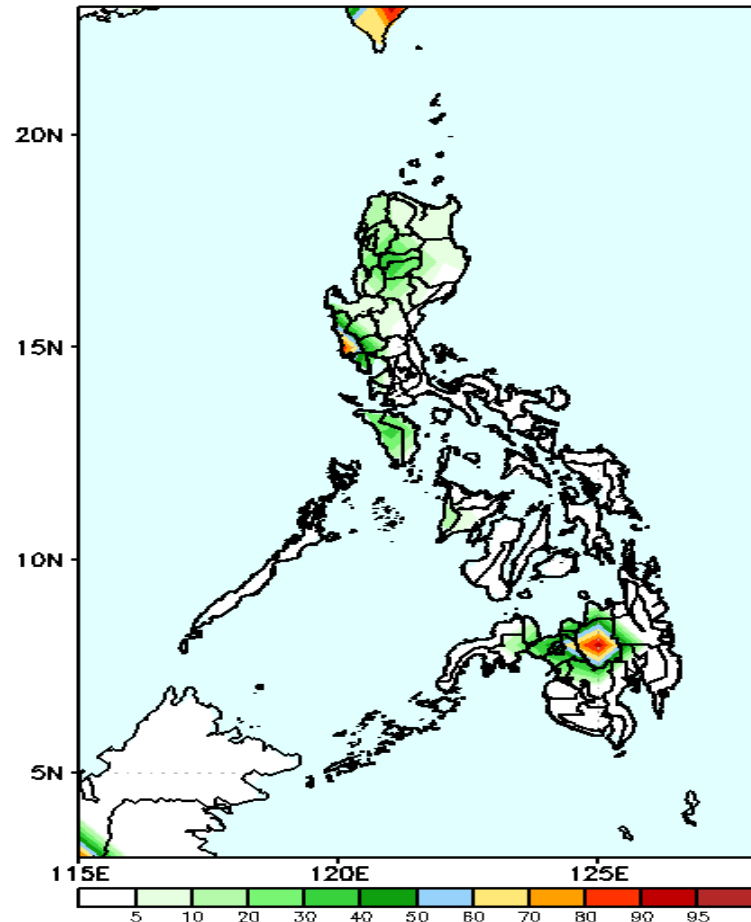


High probability of rainfall to exceed 50mm in CAR, Mindoro, northern Mindanao and Lanao del Sur while less likely for the rest of the country during the forecast period.

Exceedance Probability > 100/150/200 mm

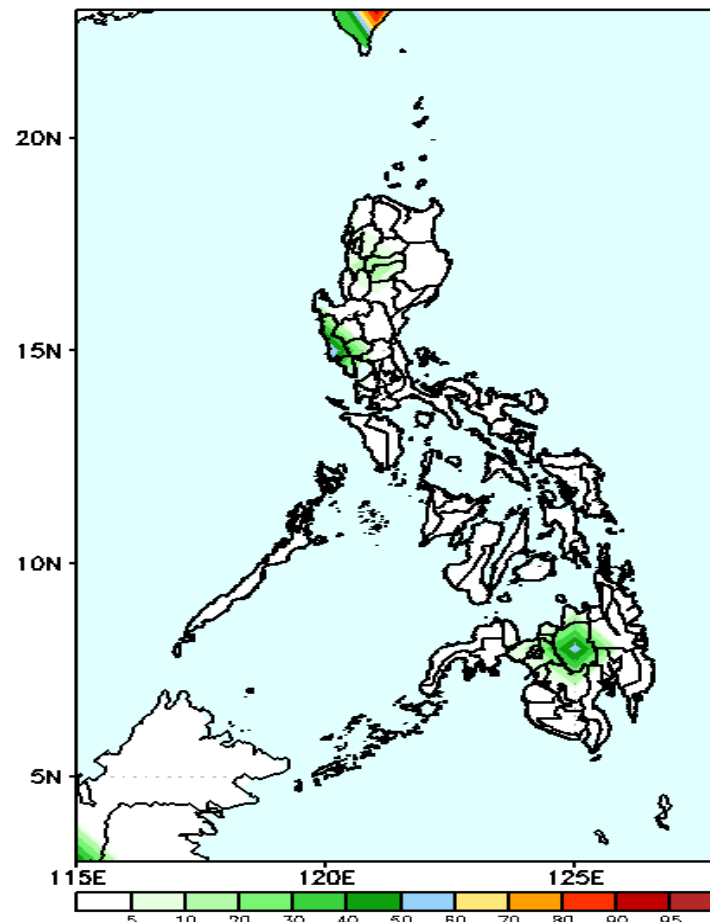
Week 2: May 25-31, 2020

GEFS Week-2 Exceedance Prob. > 100mm
Valid: 20200525 - 20200531



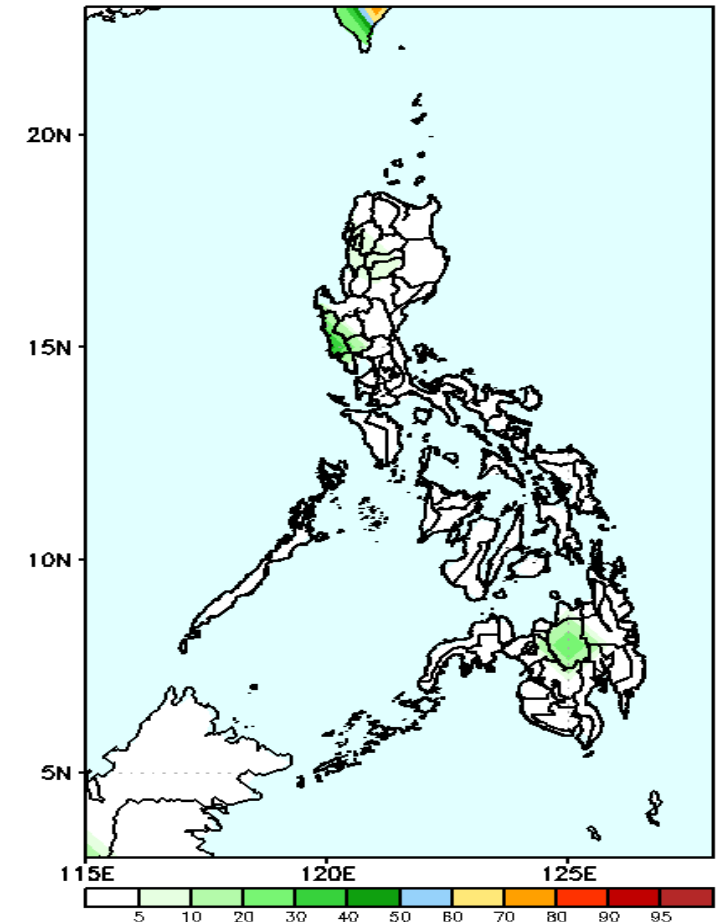
High probability of rainfall to exceed 100mm in Bukidnon while less likely for the rest of the country during the forecast period

GEFS Week-2 Exceedance Prob. > 150mm
Valid: 20200525 - 20200531



Less probability of rainfall to exceed 150mm in most parts of the country during the forecast period.

GEFS Week-2 Exceedance Prob. > 200mm
Valid: 20200525 - 20200531

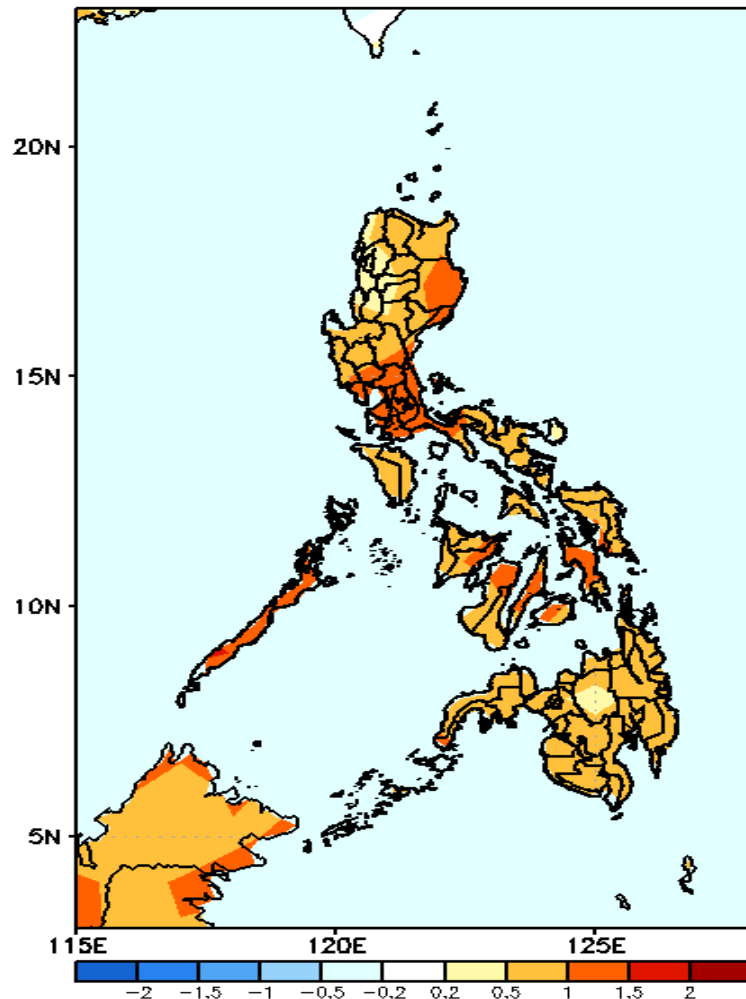


Less probability of rainfall to exceed 200mm in most parts of the country during the forecast period.



GEFS Week-1 & 2 Forecasts: T2m Anomaly

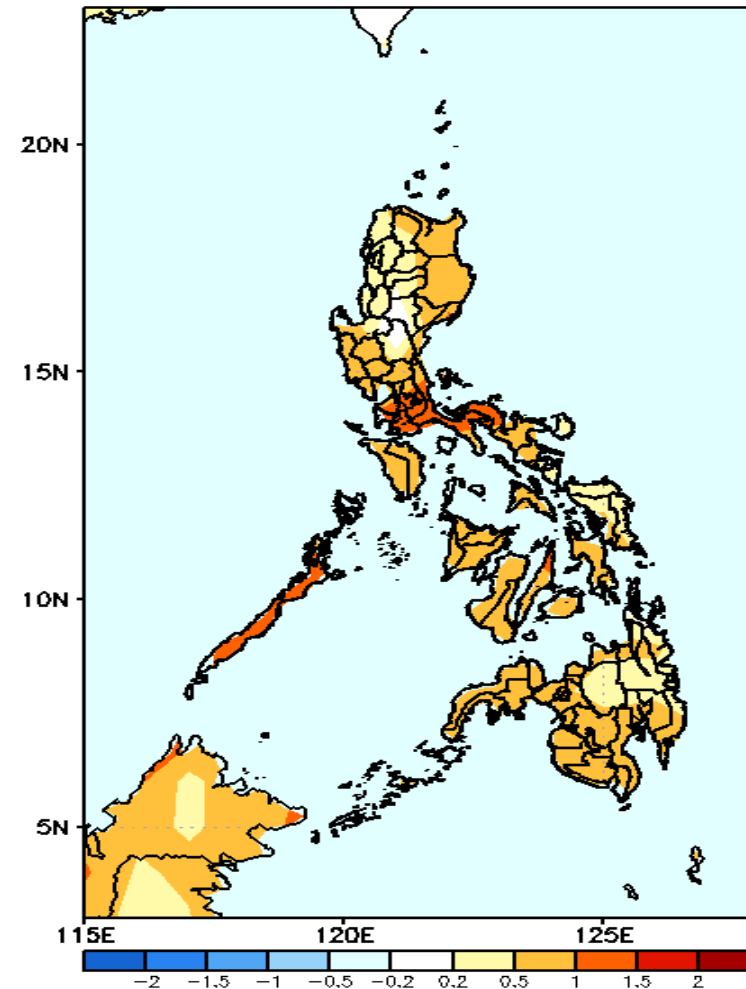
GEFS Week-1 T2m Anomaly
Valid: 20200518 – 20200524



2m Temperature Week 1: May 18-24, 2020

Warmer than average surface air temperature will likely experience in most parts of the country during the forecast period.

GEFS Week-2 T2m Anomaly
Valid: 20200525 – 20200531



2m Temperature Week 2: May 25-31, 2020

Slightly warmer to warmer than average surface air temperature will likely experience in most parts of the country during the forecast period.