



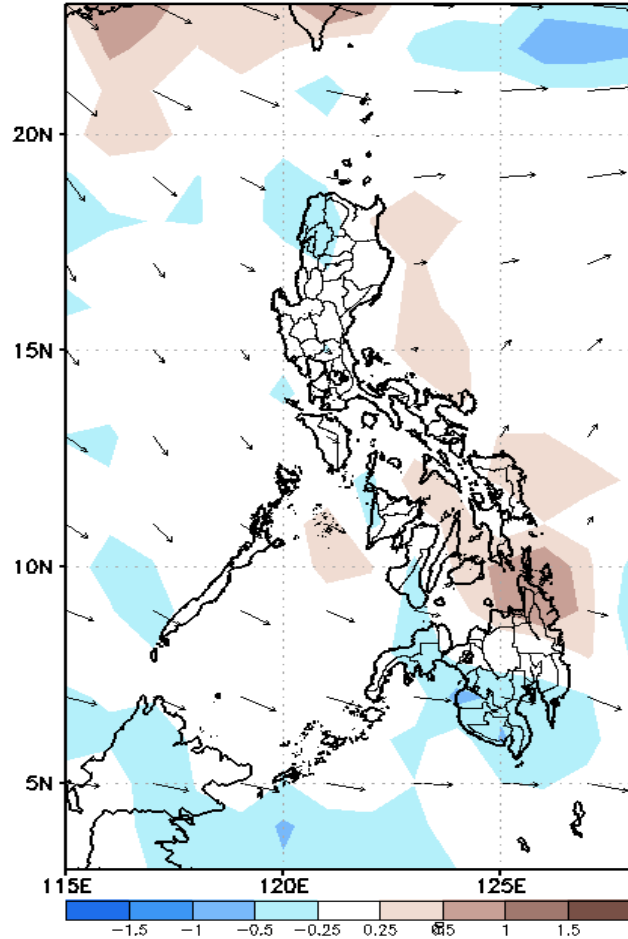
Week 1 & Week 2 Forecast for the Philippines using GEFS Model



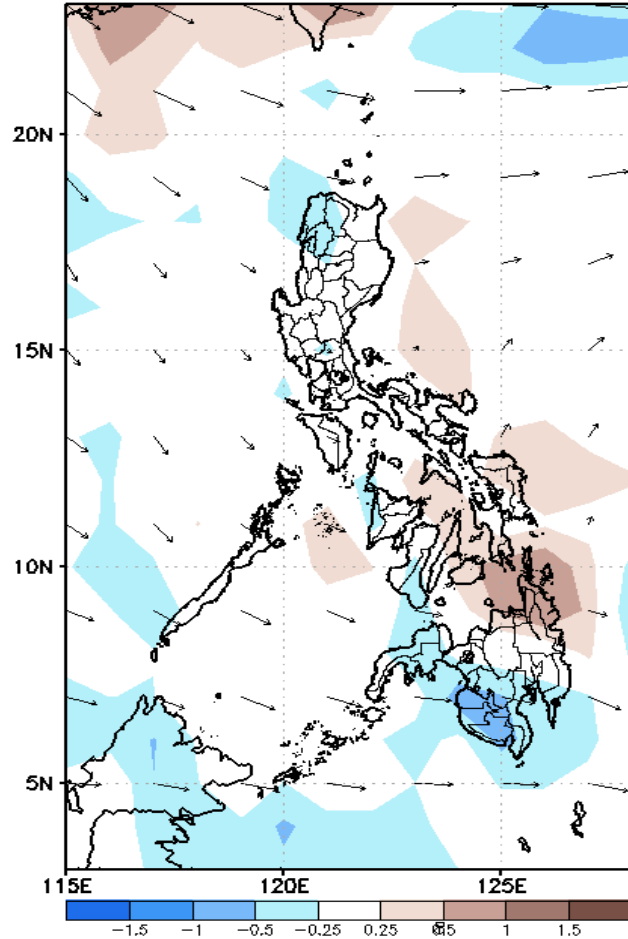
GEFS Week-1 Forecasts: Divergence & Wind Anomaly

Week 1: February 18-24, 2021

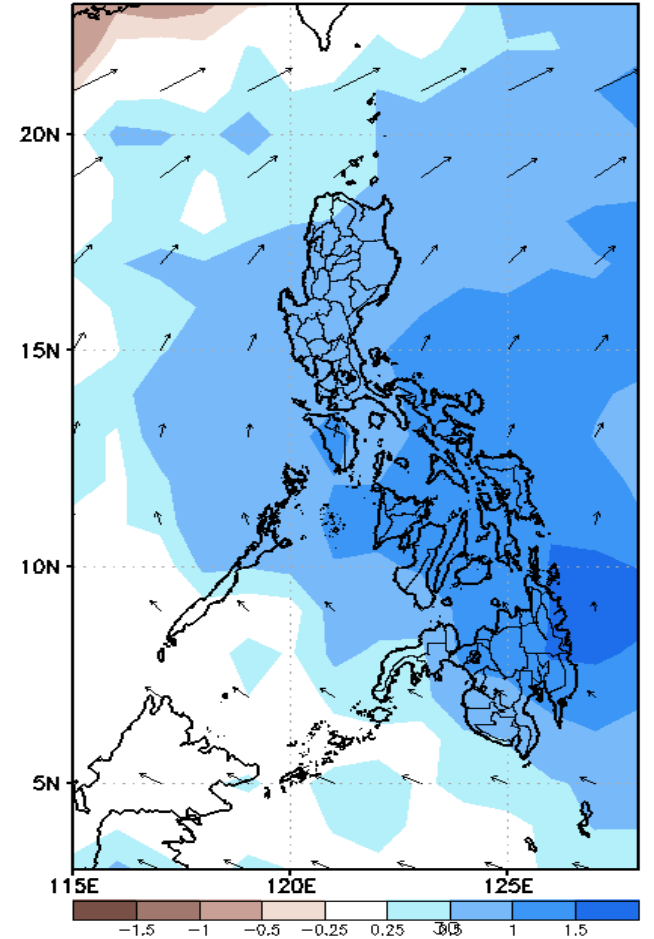
GEFS Week-1 850-hPa Divergence and Wind Anomom
Valid: 20210218 - 20210224



GEFS Week-1 700-hPa Divergence and Wind Anomom
Valid: 20210218 - 20210224



GEFS Week-1 200-hPa Divergence and Wind Anomom
Valid: 20210218 - 20210224

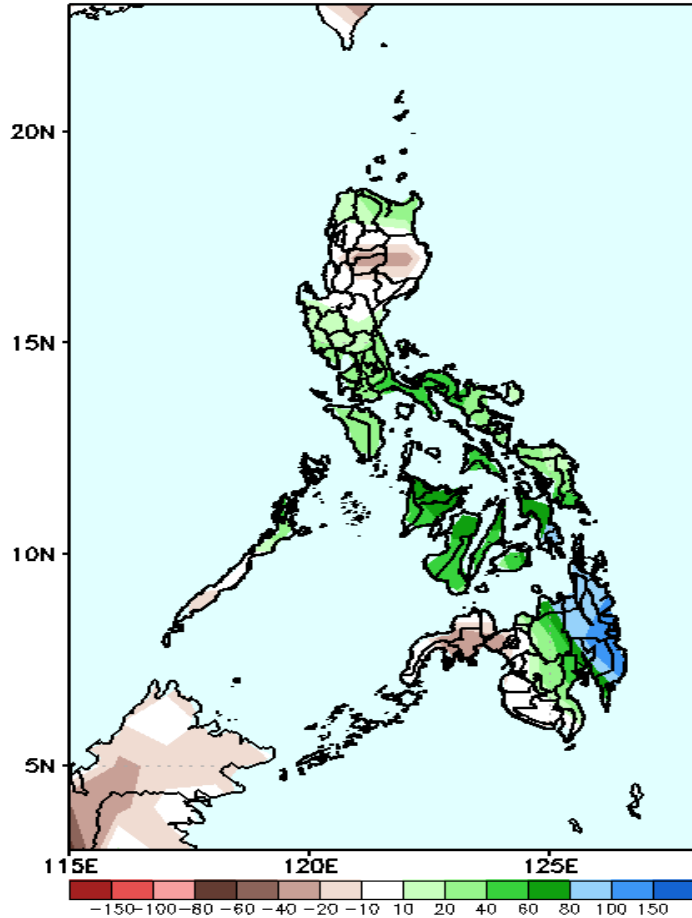


Upper and low level Divergence suggest likelihood of precipitation in most parts of the country. Northeast Monsoon affecting most parts of Luzon while Easterlies affecting Visayas and Mindanao during the forecast period.

Precipitation Anomaly and Exceedance Probability > 25/50 mm

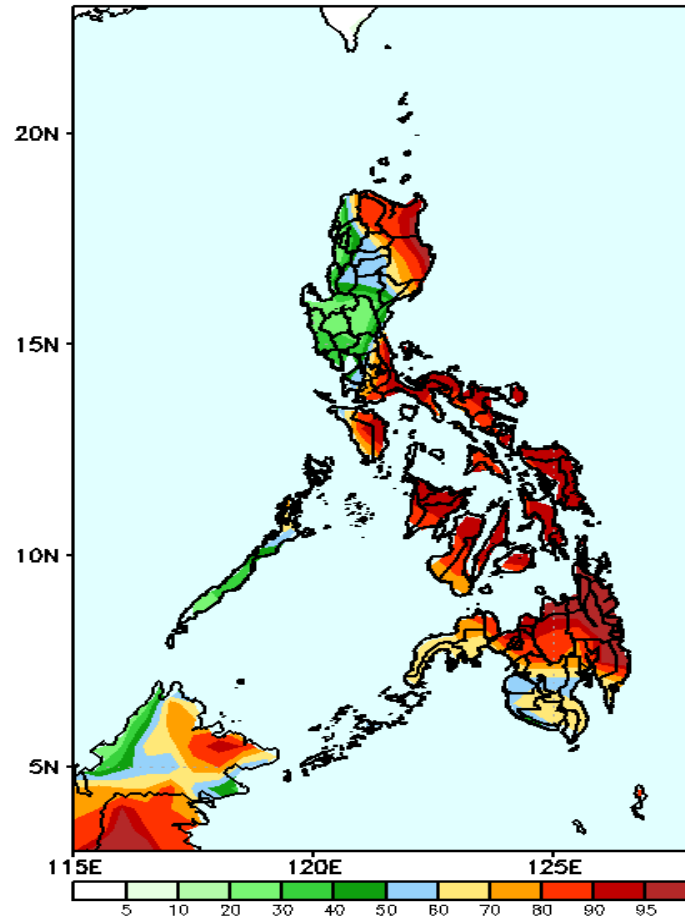
Week 1: February 18-24, 2021

GEFS Week-1 Precip Anomaly
Valid: 20210218 - 20210224



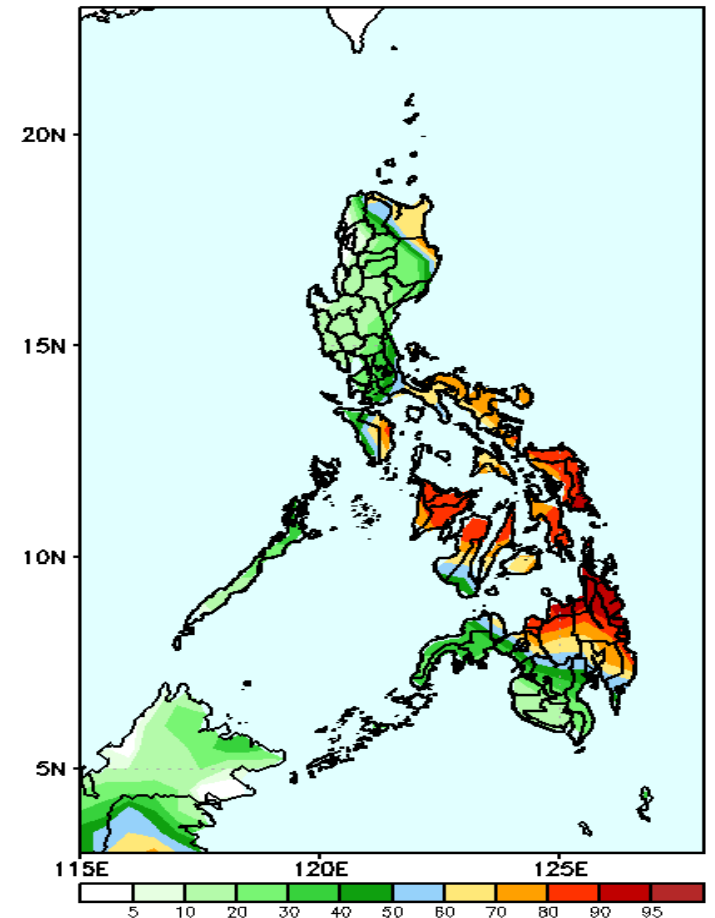
Increase of rainfall of 40-80mm is expected in northern Luzon and in most parts of Visayas and central Mindanao and up to 150mm increase in CARAGA and Davao Region.

GEFS Week-1 Exceedance Prob. > 25mm
Valid: 20210218 - 20210224



High probability of rainfall to exceed 25mm in Apayao, Cagayan, Isabela, Southern Luzon and most parts of Visayas and Mindanao during the forecast period.

GEFS Week-1 Exceedance Prob. > 50mm
Valid: 20210218 - 20210224

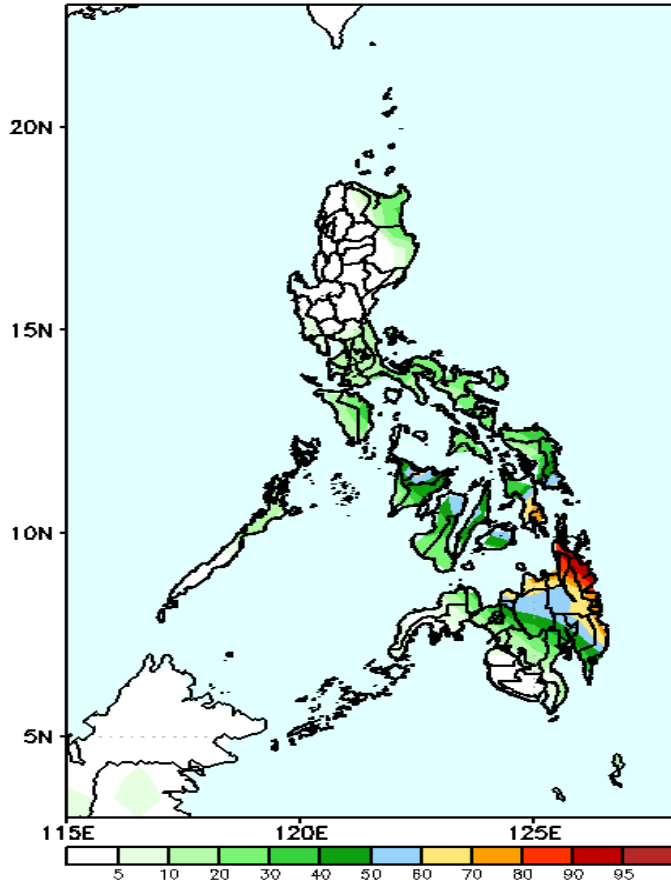


High probability of rainfall to exceed 50mm in Cagayan & northern Isabela, Oriental Mindoro, Bicol region, most parts of Visayas and northern and eastern parts of Mindanao during the forecast period.

Exceedance Probability > 100/150/200 mm

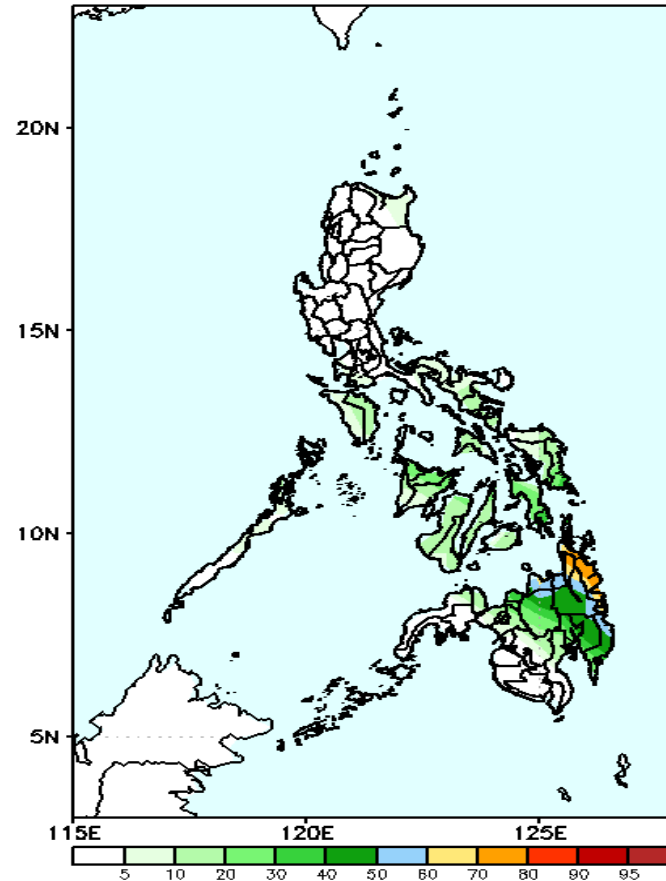
Week 1: February 18-24, 2021

GEFS Week-1 Exceedance Prob. > 100mm
Valid: 20210218 - 20210224



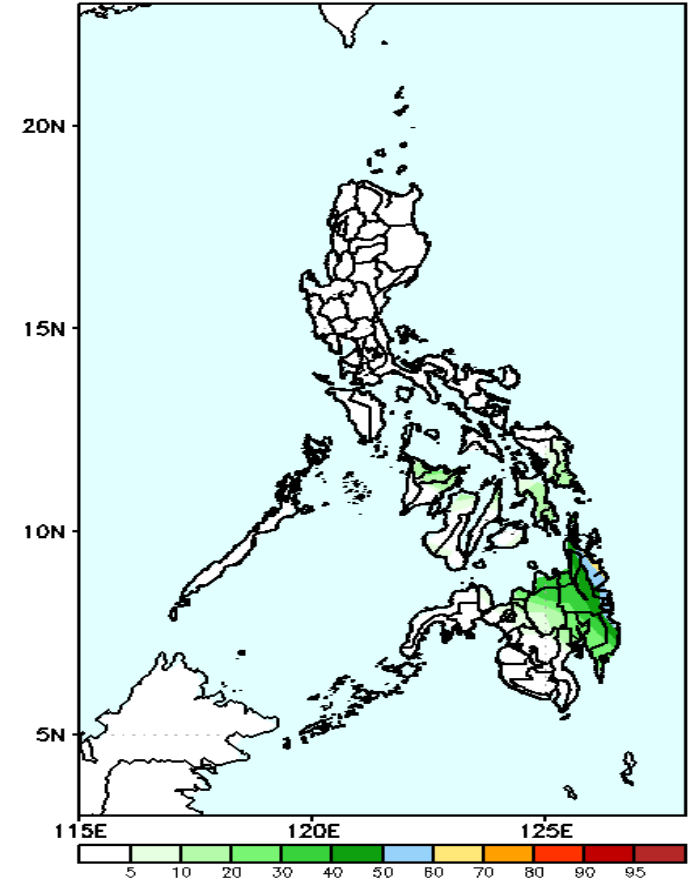
High probability of rainfall to exceed 100mm in, Southern Leyte, CARAGA and Davao Oriental while less likely for the rest of the country during the forecast period

GEFS Week-1 Exceedance Prob. > 150m
Valid: 20210218 - 20210224



Less probability of rainfall to exceed 150mm in most parts of the country except in CARAGA, Misamis Oriental, Davao Oriental and Compostela Valley where there is 70-95% chance during the forecast period.

GEFS Week-1 Exceedance Prob. > 200mm
Valid: 20210218 - 20210224



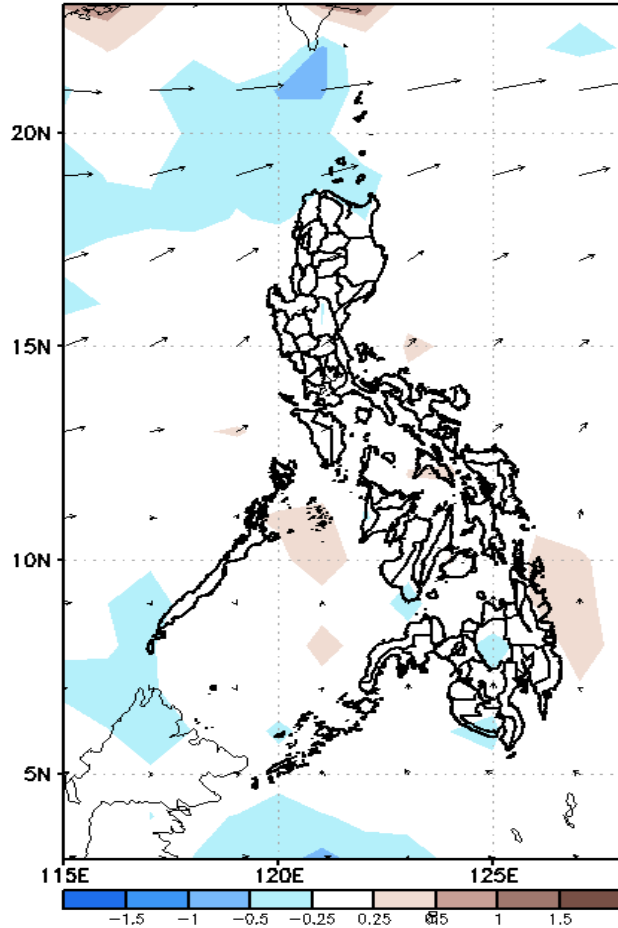
Less probability of rainfall to exceed 200mm in most parts of the country during the forecast period.



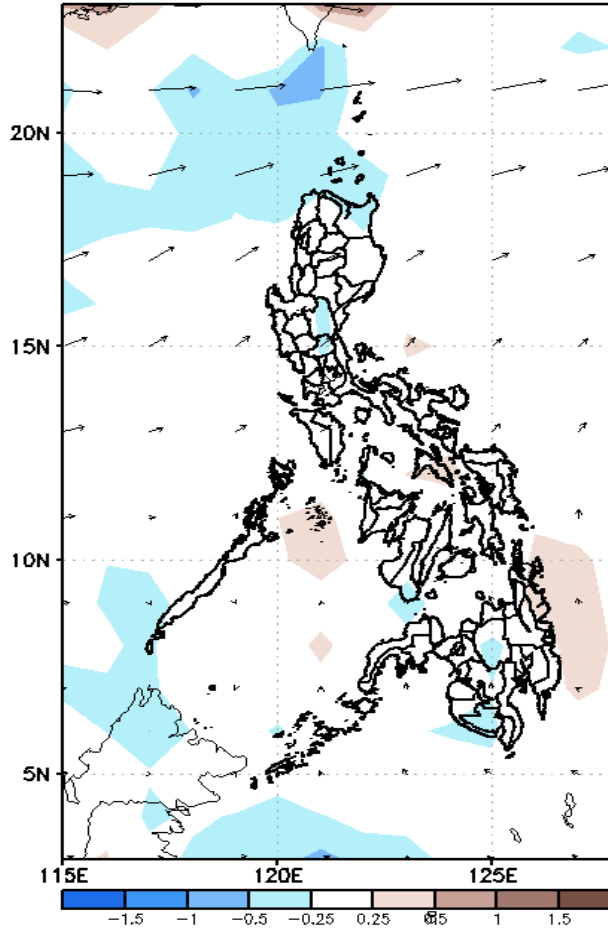
GEFS Week-2 Forecasts: Divergence & Wind Anomaly

Week 2: Feb 25- Mar 03, 2021

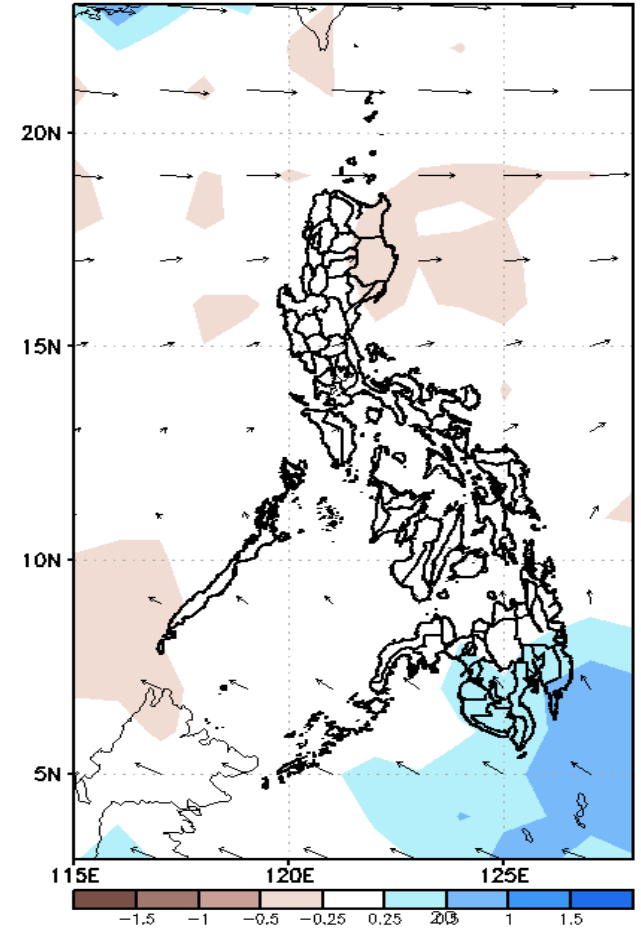
GEFS Week-2 850-hPa Divergence and Wind Anom
Valid: 20210225 - 20210303



GEFS Week-2 700-hPa Divergence and Wind Anom
Valid: 20210225 - 20210303



GEFS week-2 200-hPa Divergence and Wind Anom
Valid: 20210225 - 20210303

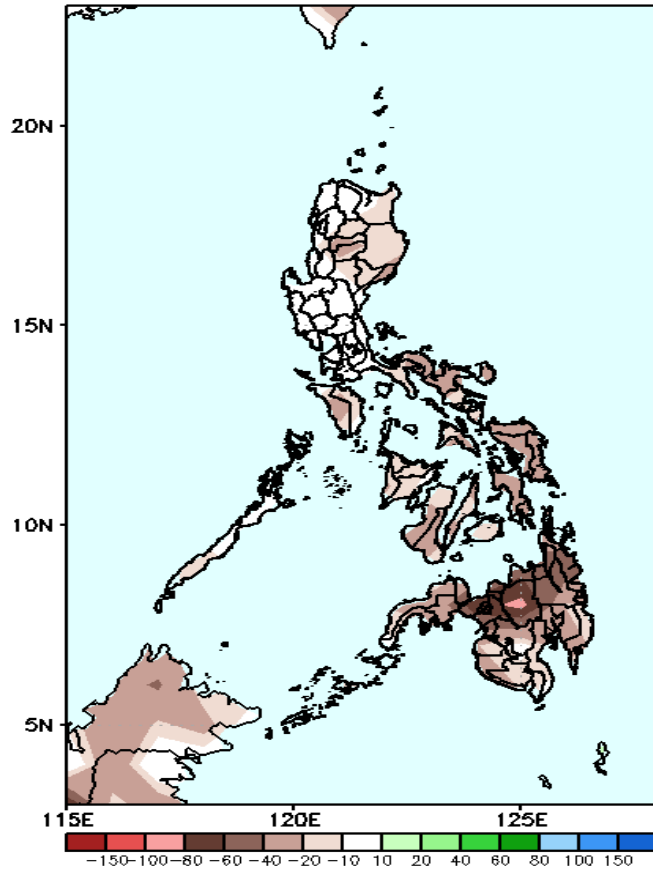


Upper and low level Divergence suggest less likelihood of precipitation in most parts of the country except Davao region, SOCSARGEN and Western Mindanao. Northeast Monsoon affecting Extreme Northern Luzon while Easterlies affecting most parts of the country during the forecast period.

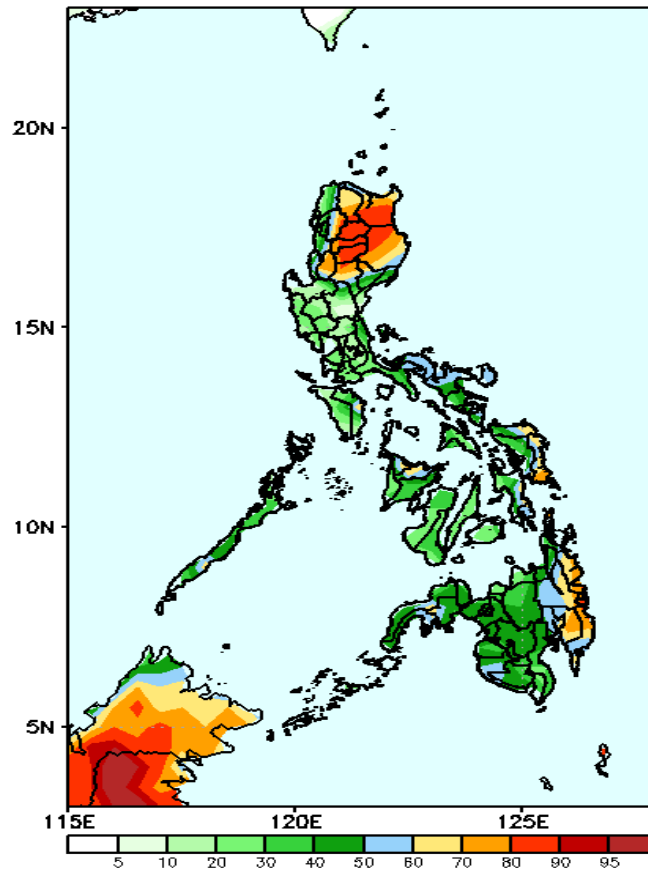
Precipitation Anomaly and Exceedance Probability > 25/50 mm

Week 2: Feb 25- Mar 03, 2021

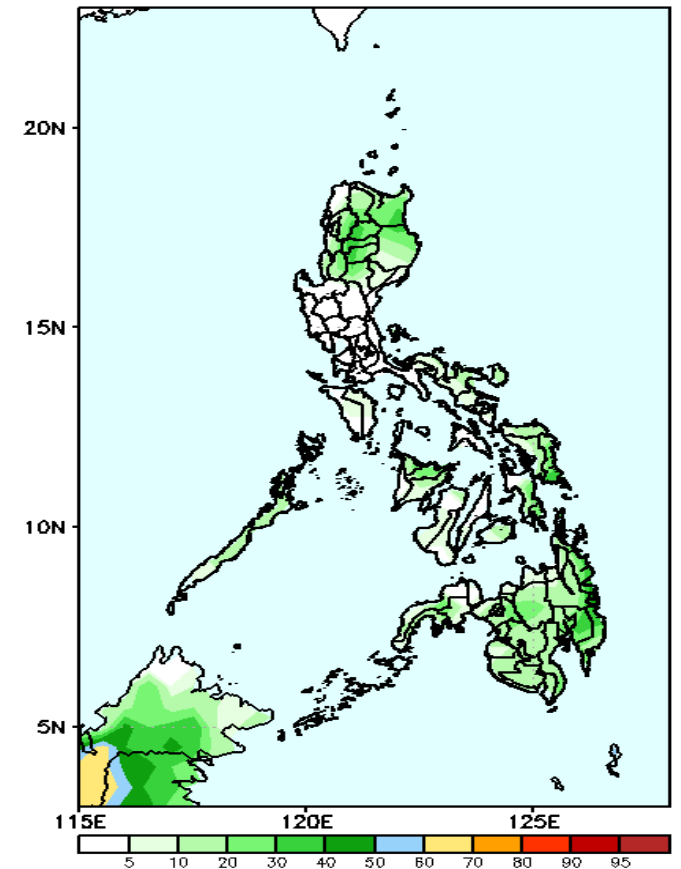
GEFS Week-2 Precip Anomaly
Valid: 20210225 - 20210303



GEFS Week-2 Exceedance Prob. > 25mm
Valid: 20210225 - 20210303



GEFS Week-2 Exceedance Prob. > 50mm
Valid: 20210225 - 20210303



Rainfall deficit of up to 80mm in most parts of the country is expected especially in eastern Visayas and northern half of Mindanao.

High probability of rainfall to exceed 25mm in most parts of the Cagayan Valley and Cordillera Region, northern & eastern Samar and in eastern Mindanao during the forecast period.

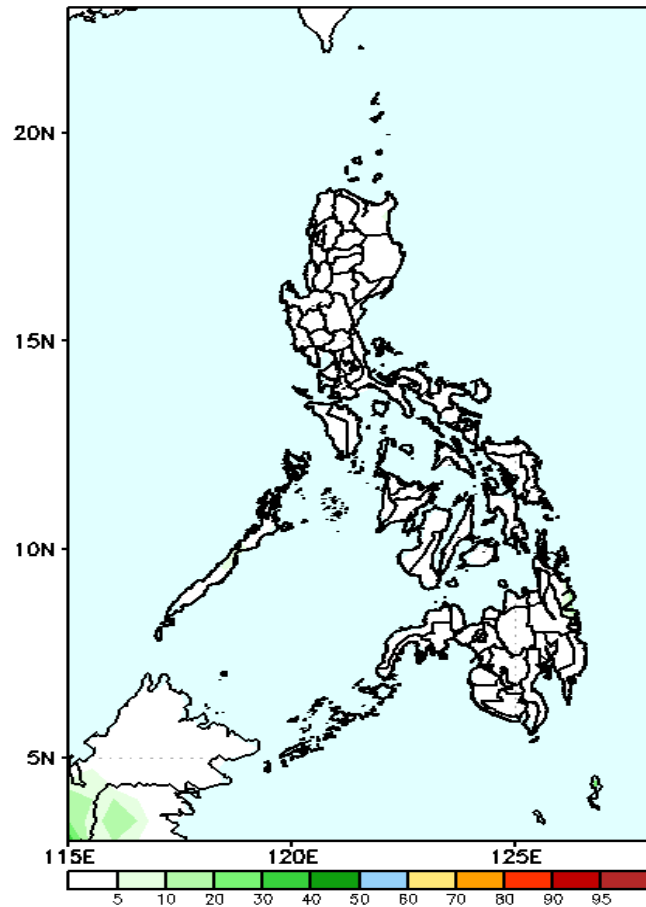
Less probability of rainfall to exceed 50mm in most parts of the country during the forecast period.



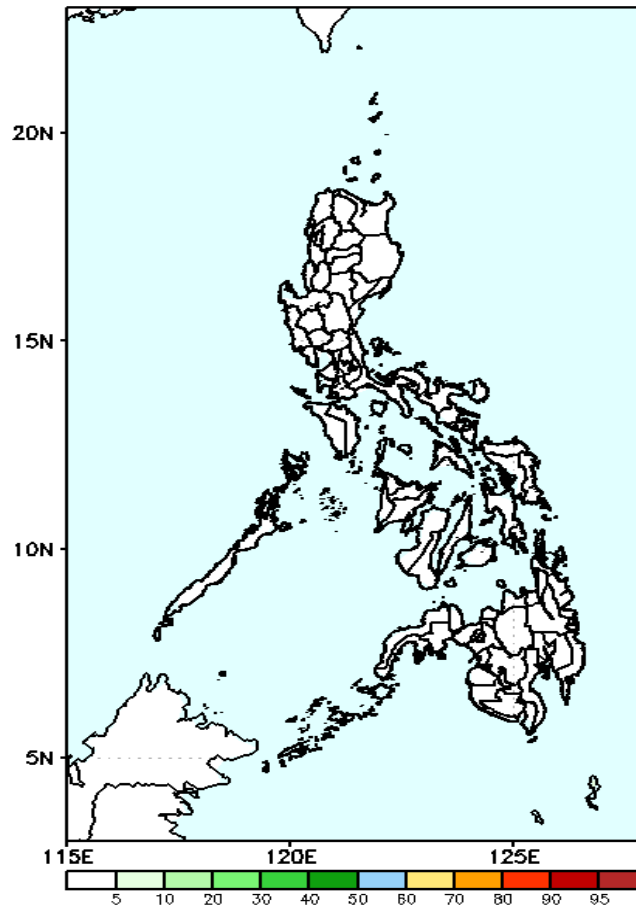
Exceedance Probability > 100/150/200 mm

Week 2: Feb 25- Mar 03, 2021

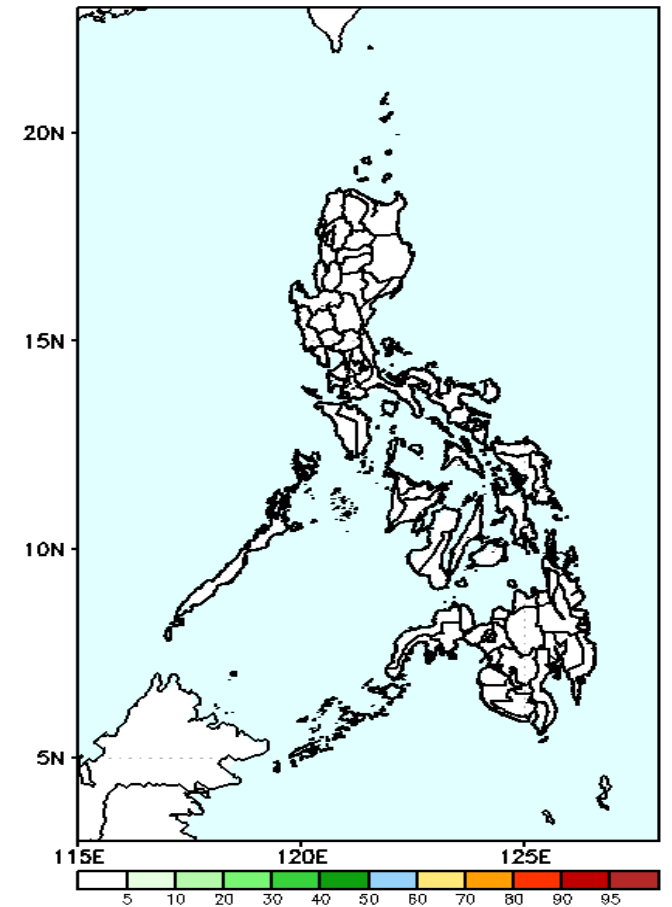
GEFS Week-2 Exceedance Prob. > 100mm
Valid: 20210225 - 20210303



GEFS Week-2 Exceedance Prob. > 150mm
Valid: 20210225 - 20210303



GEFS Week-2 Exceedance Prob. > 200mm
Valid: 20210225 - 20210303



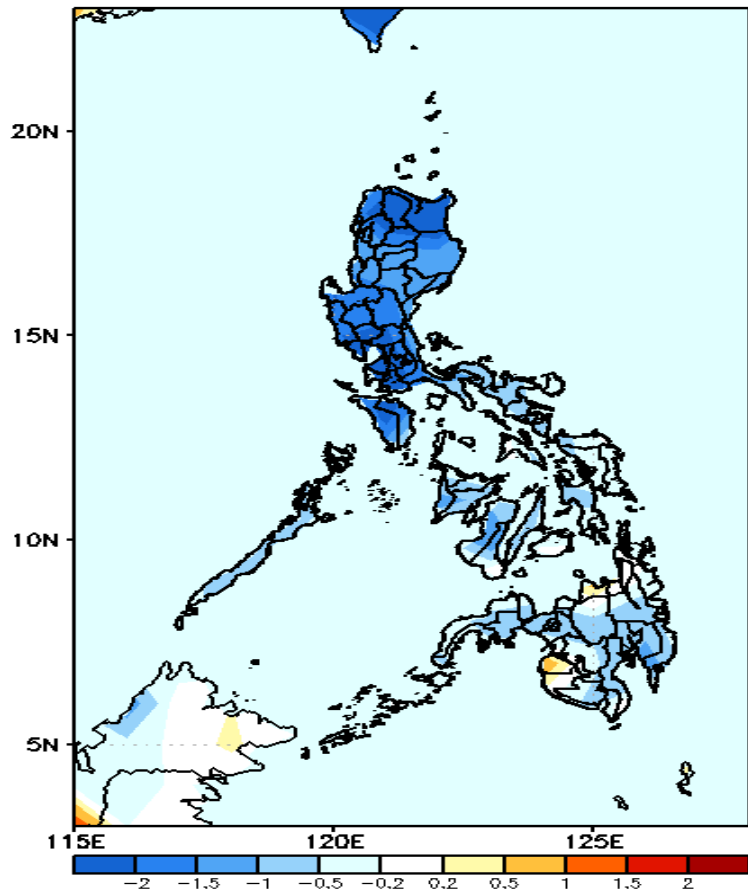
Less probability of rainfall to exceed 100mm in most parts of the country during the forecast period.

Less probability of rainfall to exceed 150mm in most parts of the country during the forecast period.

Less probability of rainfall to exceed 200mm in most parts of the country during the forecast period.

GEFS Week-1 & 2 Forecasts: T2m Anomaly

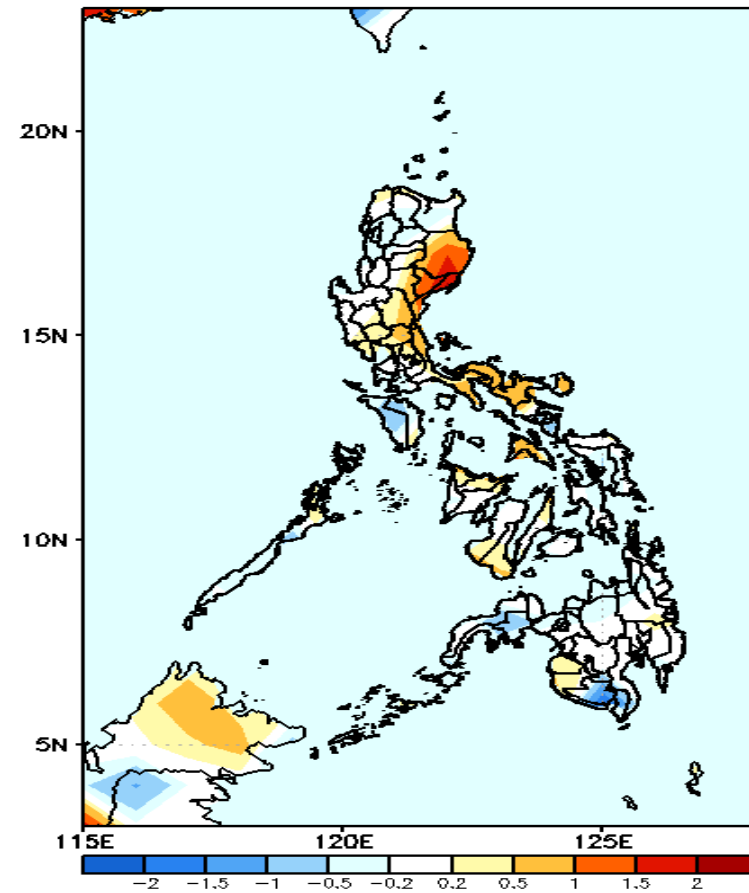
GEFS Week-1 T2m Anomaly
Valid: 20210218 - 20210224



2m Temperature Week 1: February 18-24, 2021

Cooler than average surface air temperature is expected in Luzon while average to slightly cooler than average temperature for the rest of the country during the forecast period.

GEFS Week-2 T2m Anomaly
Valid: 20210225 - 20210303



2m Temperature Week 2: Feb 25- Mar 03, 2021

Slightly warmer to warmer than average surface air temperature is expected in Isabela, Quirino, Aurora and Bicol Region while average to slightly cooler than average temperature for the rest of the country during the forecast period.