



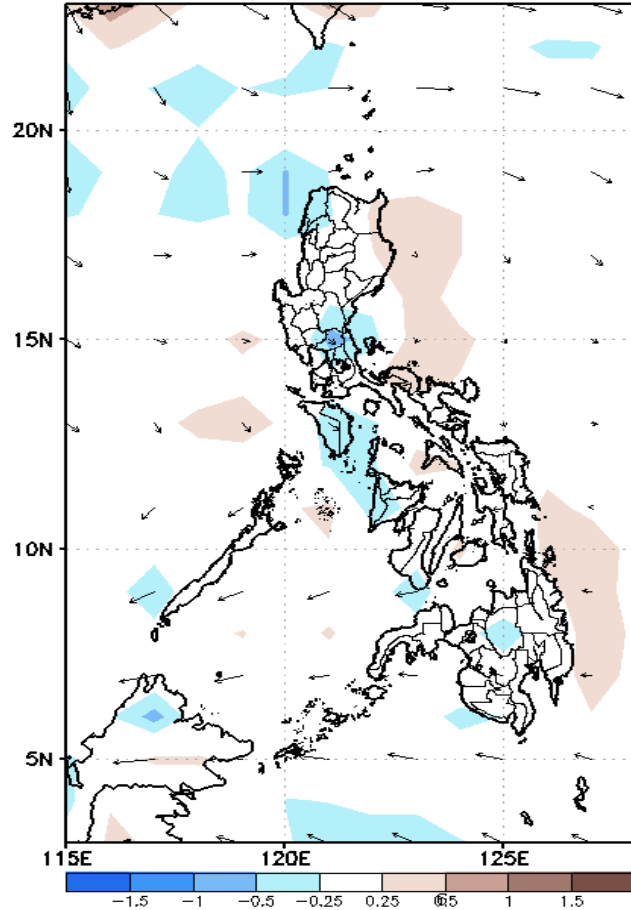
Week 1 & Week 2 Forecast for the Philippines using GEFS Model



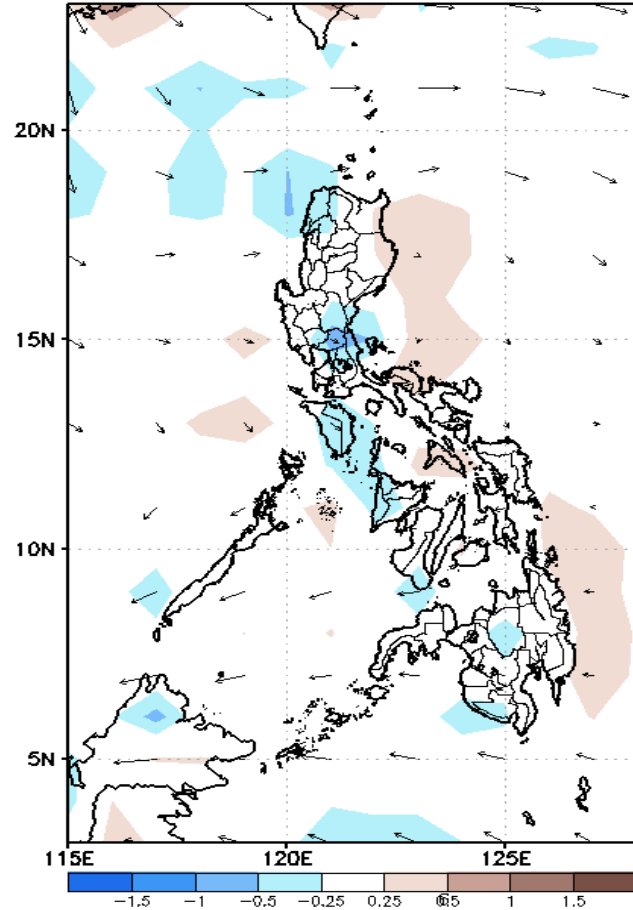
GEFS Week-1 Forecasts: Divergence & Wind Anomaly

Week 1: March 18-24, 2021

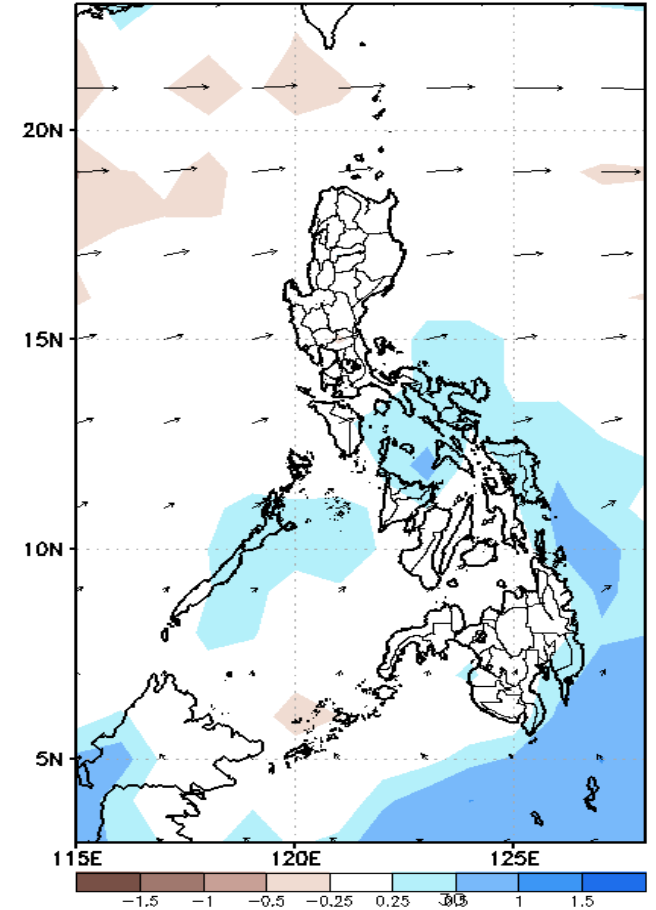
GEFS Week-1 850-hPa Divergence and Wind Anom
Valid: 20210318 - 20210324



GEFS Week-1 700-hPa Divergence and Wind Anom
Valid: 20210318 - 20210324



GEFS Week-1 200-hPa Divergence and Wind Anom
Valid: 20210318 - 20210324

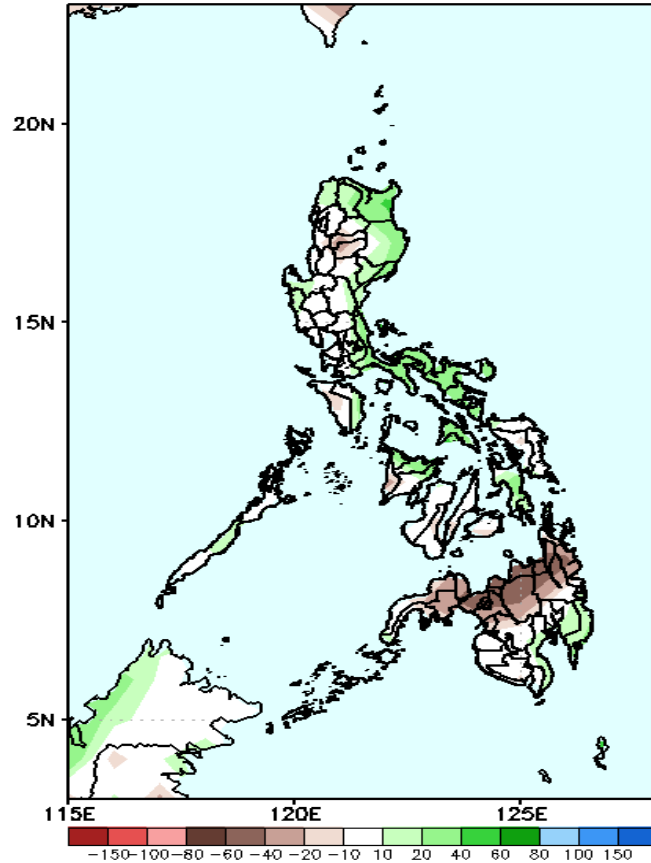


Upper and low level Divergence suggest likelihood of precipitation in most parts of Luzon. Northeast Monsoon affecting most parts of Luzon. Easterlies affecting Visayas and Mindanao during the forecast period.

Precipitation Anomaly and Exceedance Probability > 25/50 mm

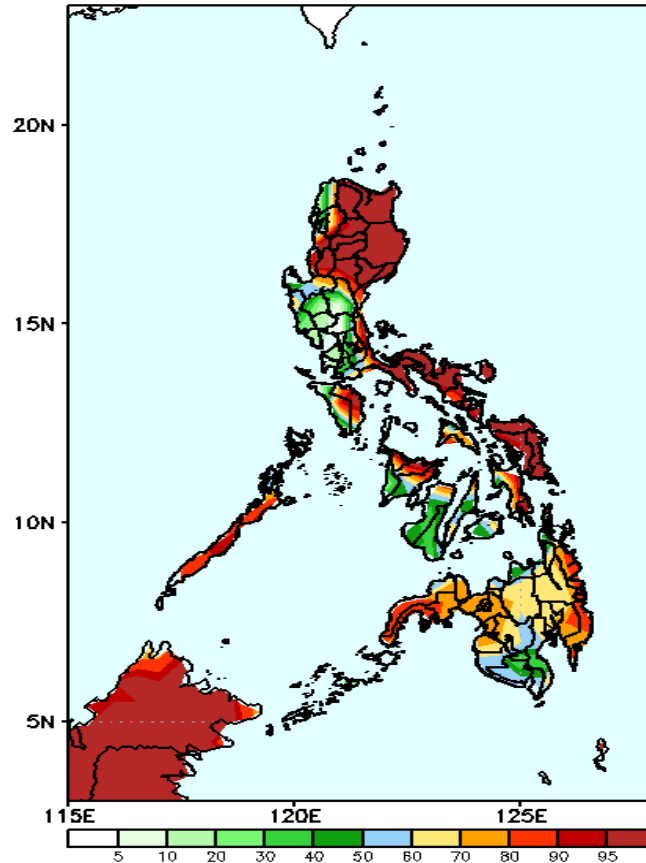
Week 1: March 18-24, 2021

GEFS Week-1 Precip Anomaly
Valid: 20210318 - 20210324



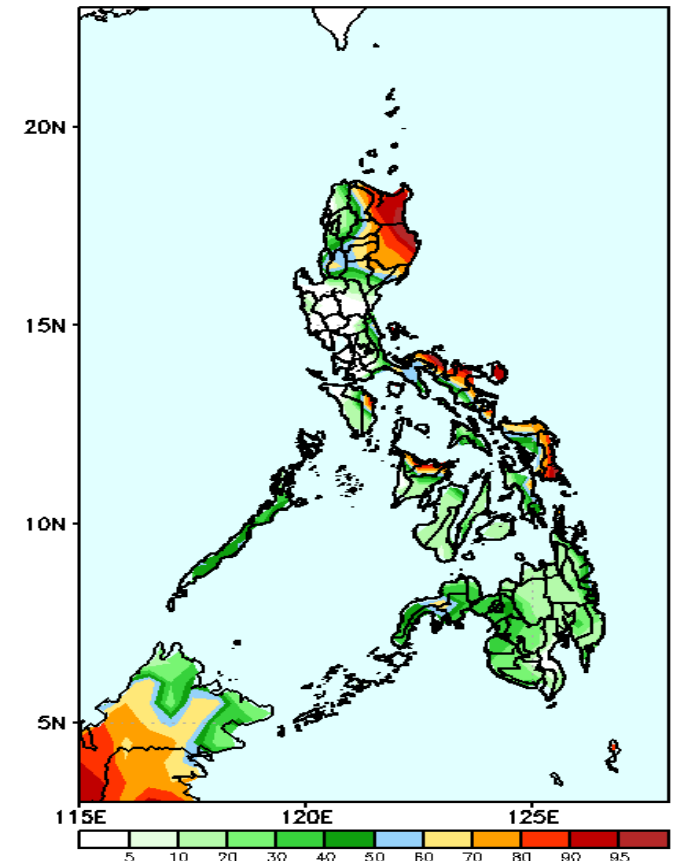
Increase of rainfall of up to 80mm is expected in most parts of Luzon except in the central and western parts and Central Visayas while Rainfall deficit of up to 100mm in northern half of Mindanao during the forecast period.

GEFS Week-1 Exceedance Prob. > 25mm
Valid: 20210318 - 20210324



High probability of rainfall to exceed 25mm in most parts of the country except in Central Luzon and, Negros Island and Region 12 during the forecast period.

GEFS Week-1 Exceedance Prob. > 50mm
Valid: 20210318 - 20210324

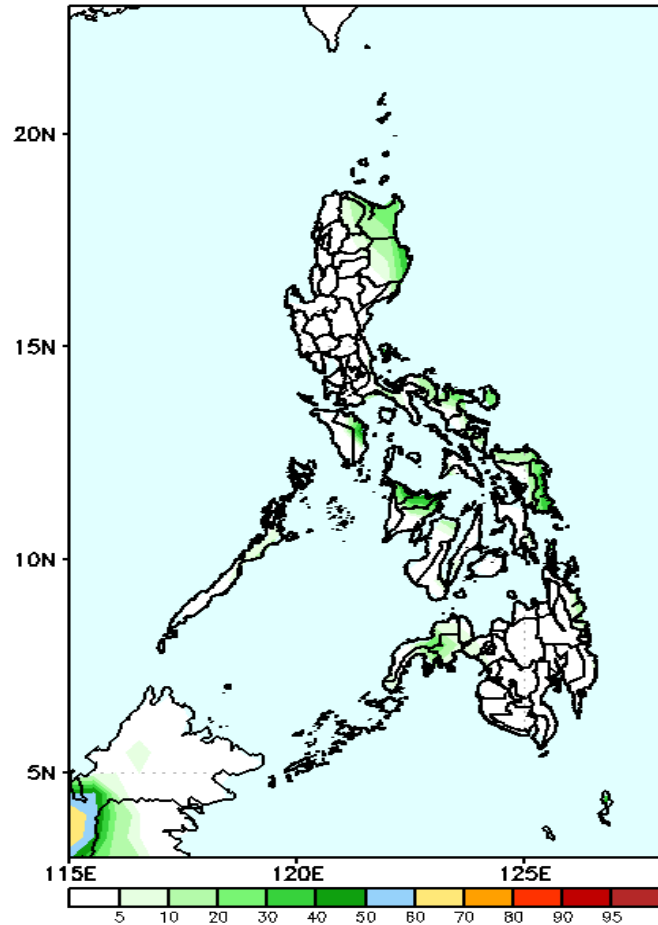


High probability of rainfall to exceed 50mm in most parts of Cagayan Valley, Bicol Region, Northern & Eastern Samar, Aklan and Capiz while less likely for the rest of the country during the forecast period.

Exceedance Probability > 100/150/200 mm

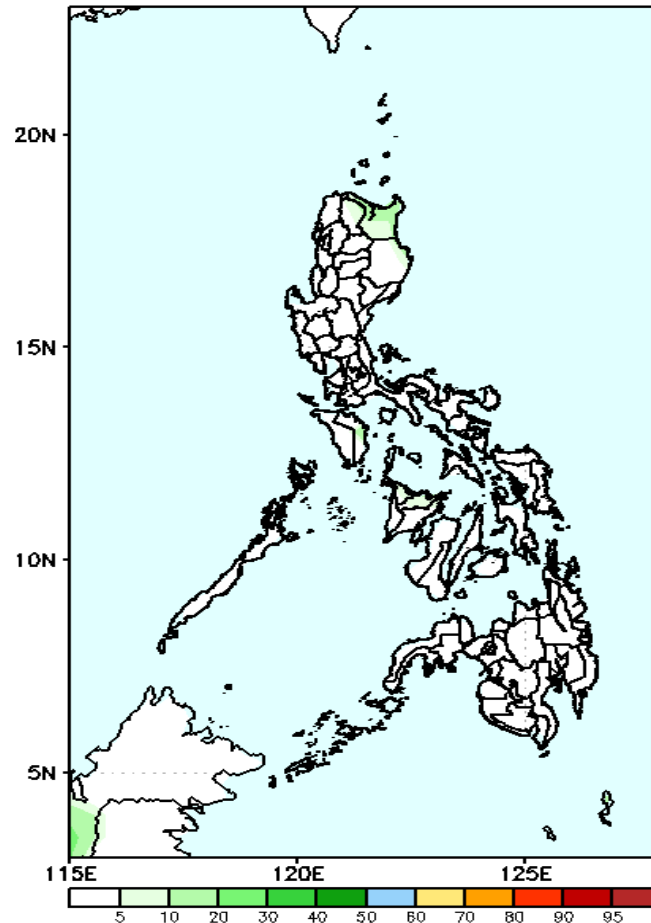
Week 1: March 18-24, 2021

GEFS Week-1 Exceedance Prob. > 100mm
Valid: 20210318 – 20210324



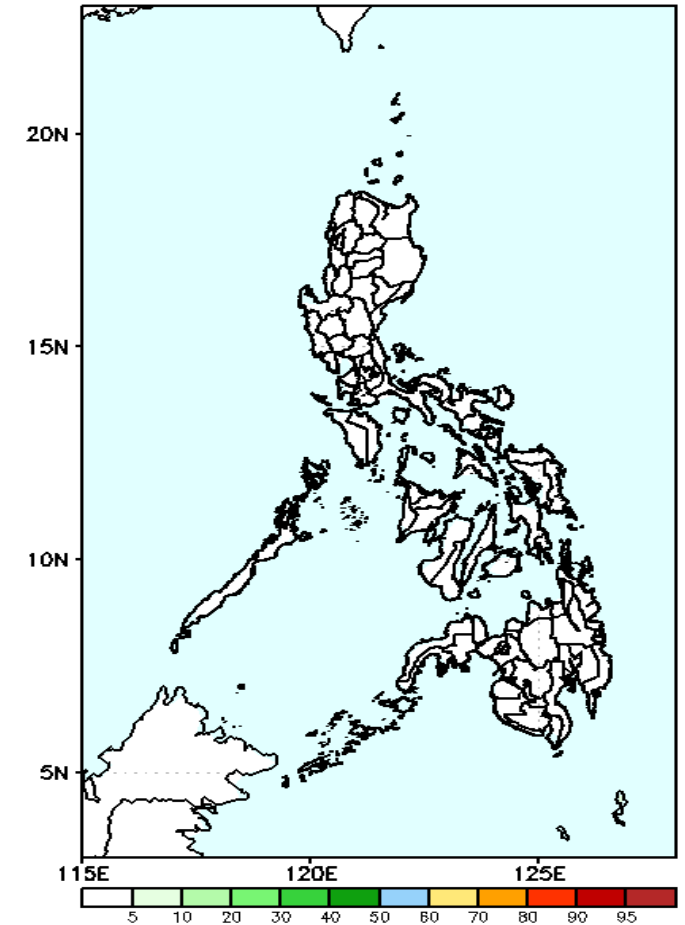
Less probability of rainfall to exceed 100mm in most parts of the country during the forecast period.

GEFS Week-1 Exceedance Prob. > 150mm
Valid: 20210318 – 20210324



Less probability of rainfall to exceed 150mm in most parts of the country during the forecast period.

GEFS Week-1 Exceedance Prob. > 200mm
Valid: 20210318 – 20210324



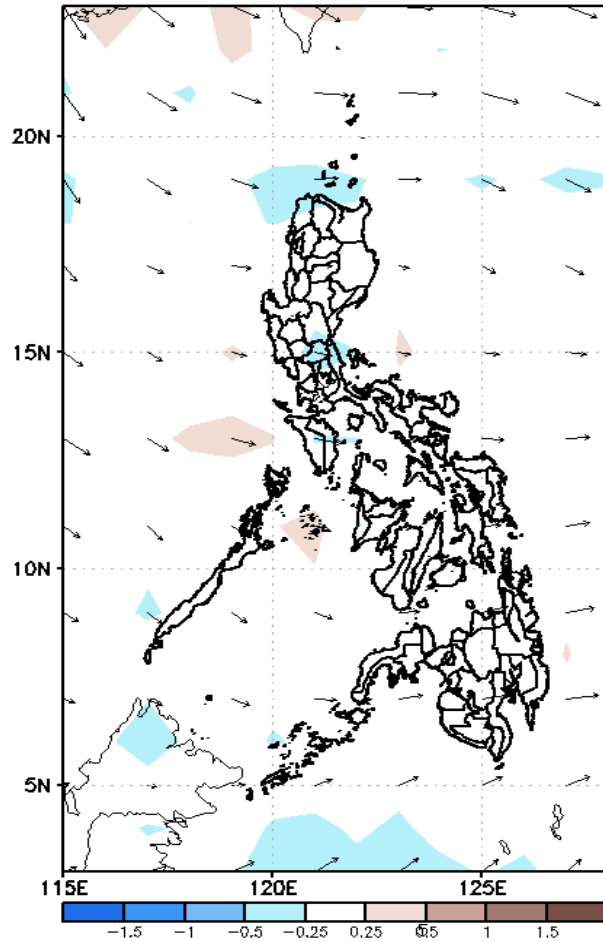
Less probability of rainfall to exceed 200mm in most parts of the country during the forecast period.



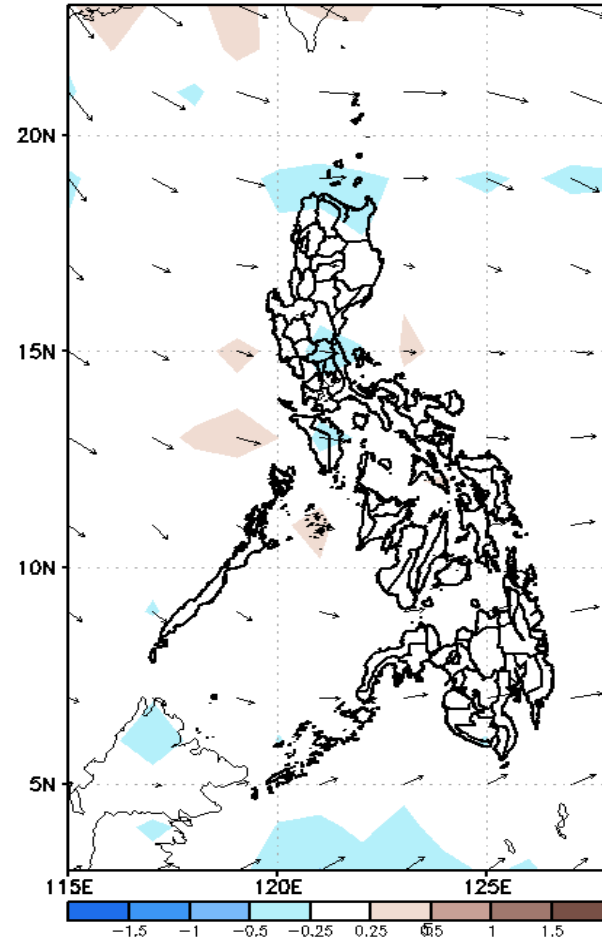
GEFS Week-2 Forecasts: Divergence & Wind Anomaly

Week 2: March 25-31, 2021

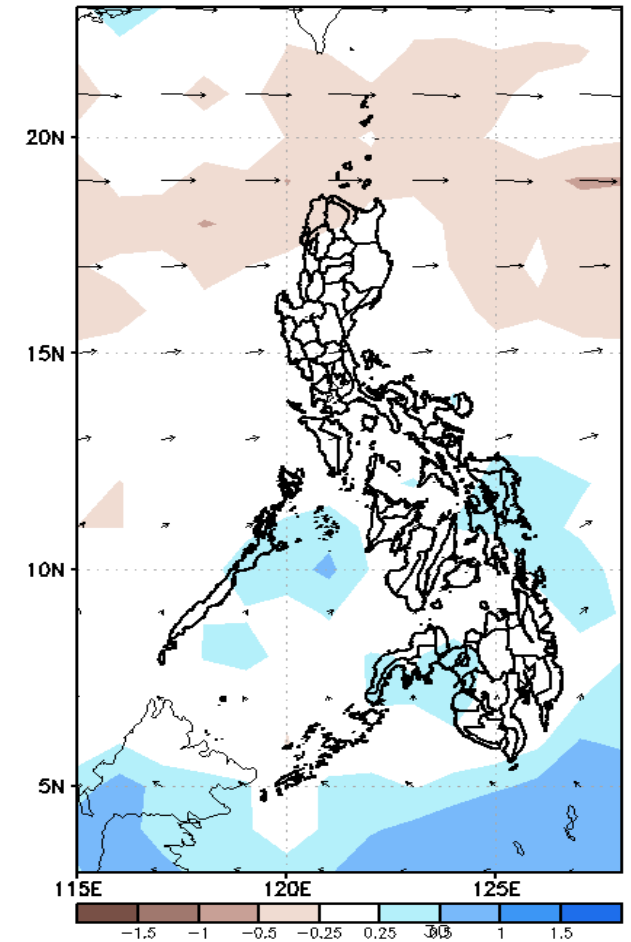
GEFS Week-2 850-hPa Divergence and Wind Anom
Valid: 20210325 - 20210331



GEFS Week-2 700-hPa Divergence and Wind Anom
Valid: 20210325 - 20210331



GEFS week-2 200-hPa Divergence and Wind Anom
Valid: 20210325 - 20210331

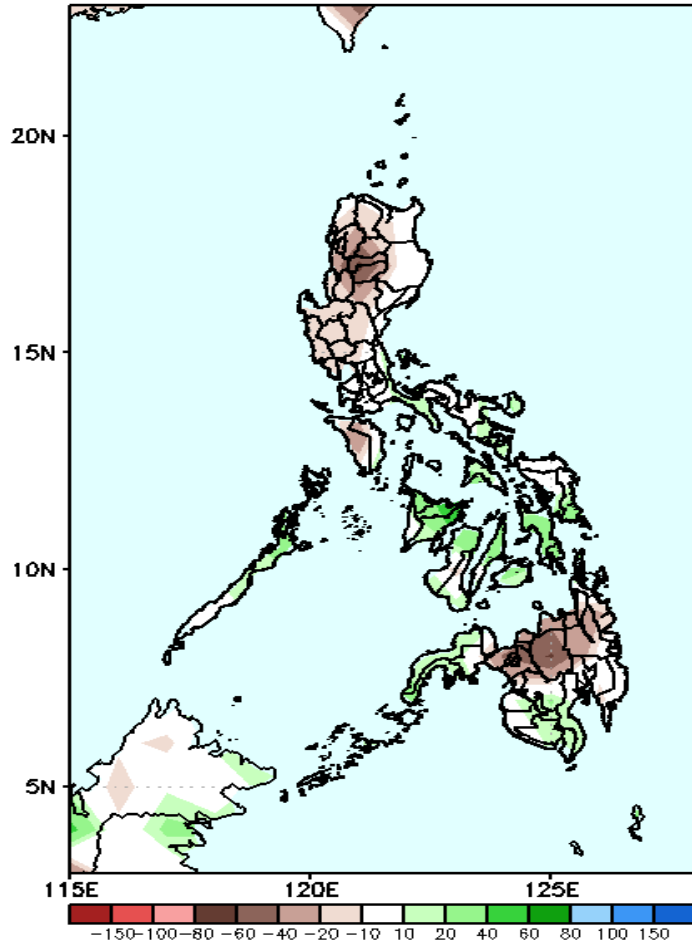


Upper and low level Divergence suggest likelihood of precipitation in some parts of Central Luzon and most parts of Mindanao. Easterlies affecting most parts of the country during the forecast period.

Precipitation Anomaly and Exceedance Probability > 25/50 mm

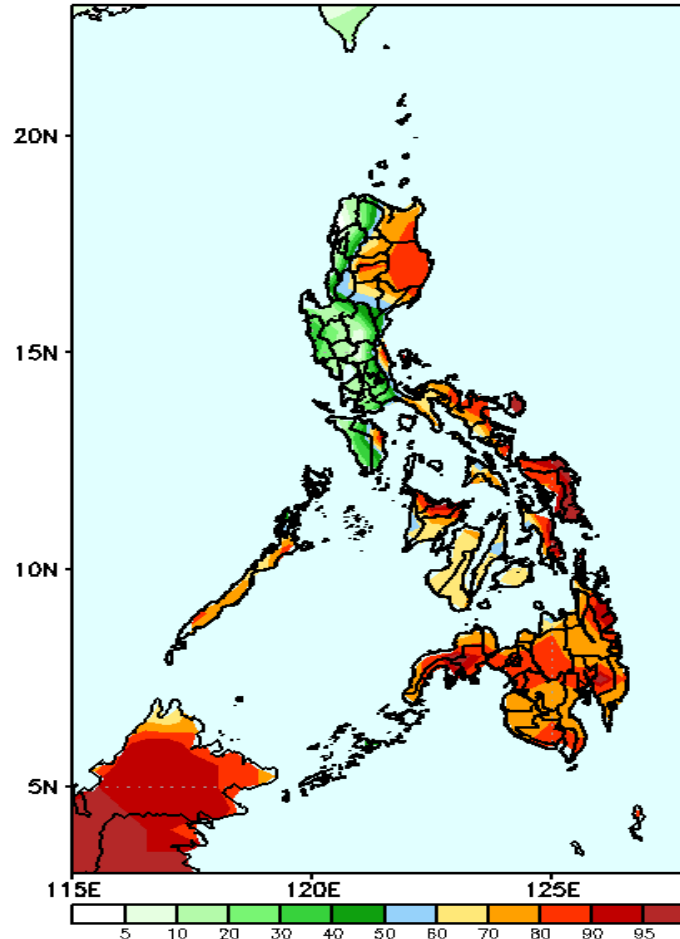
Week 2: March 25-31, 2021

GEFS Week-2 Precip Anomaly
Valid: 20210325 - 20210331



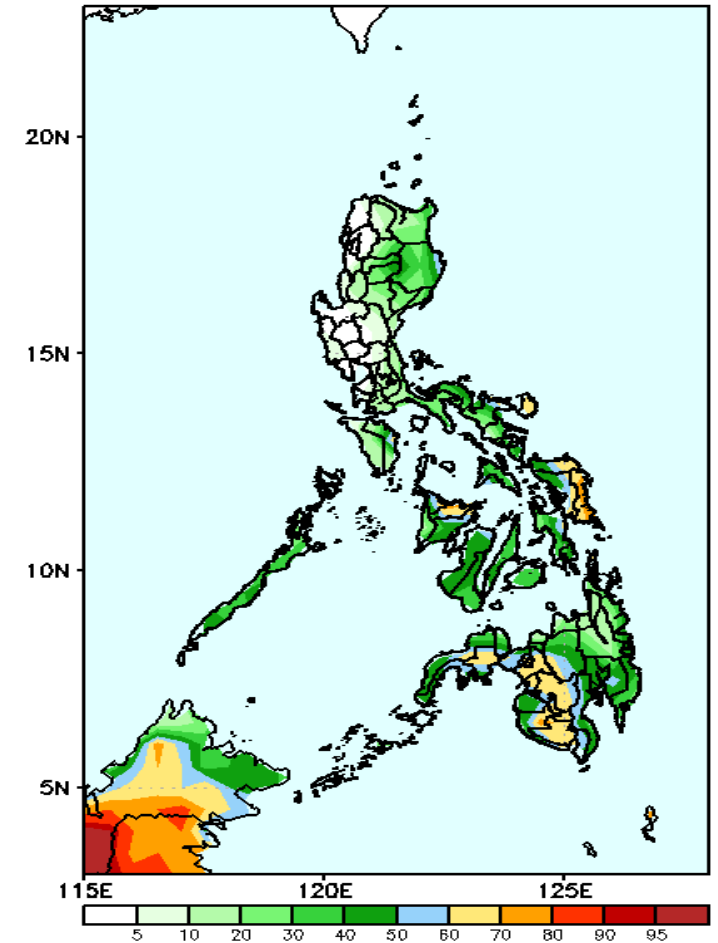
Rainfall deficit of up to 80mm is expected in most parts of the country during the forecast period.

GEFS Week-2 Exceedance Prob. > 25mm
Valid: 20210325 - 20210331



High probability of rainfall to exceed 25mm in most parts of eastern Luzon (including Cordillera Region, Bicol Region, Palawan and most parts of Visayas and Mindanao during the forecast period.

GEFS Week-2 Exceedance Prob. > 50mm
Valid: 20210325 - 20210331



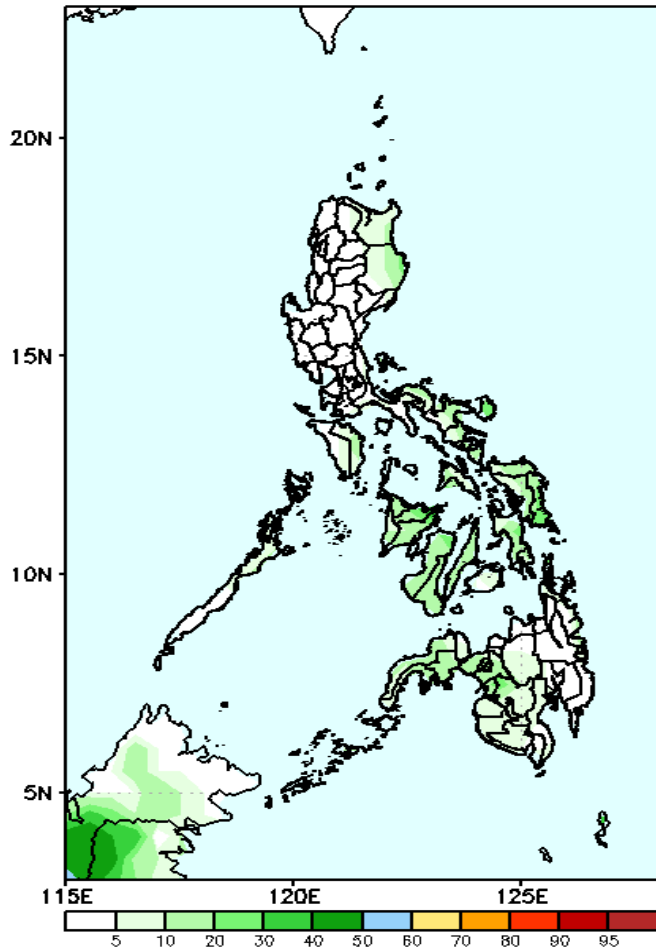
Less probability of rainfall to exceed 50mm in most parts of the country during the forecast period.



Exceedance Probability > 100/150/200 mm

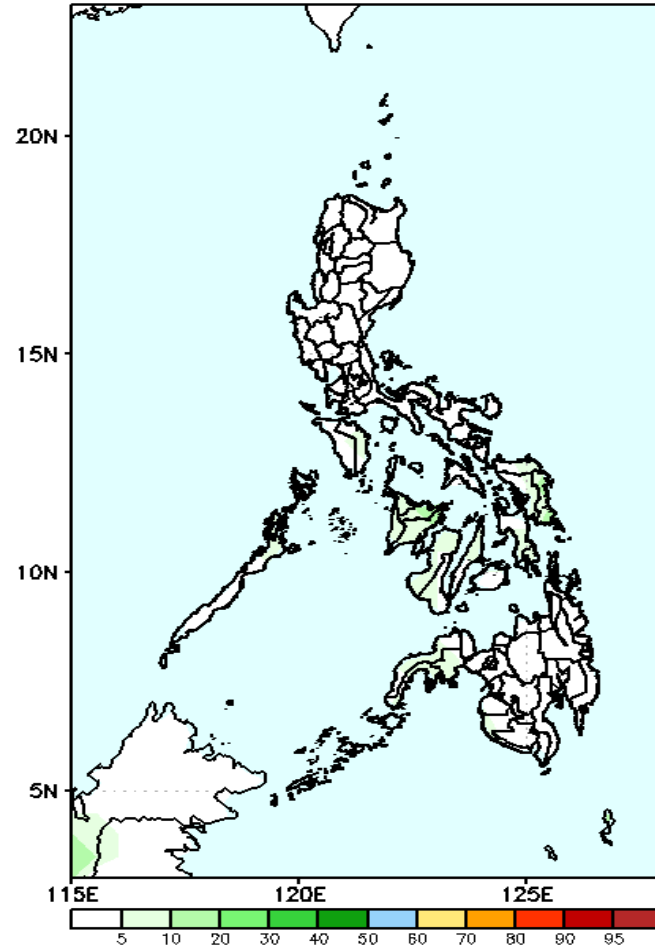
Week 2: March 25-31, 2021

GEFS Week-2 Exceedance Prob. > 100mm
Valid: 20210325 - 20210331



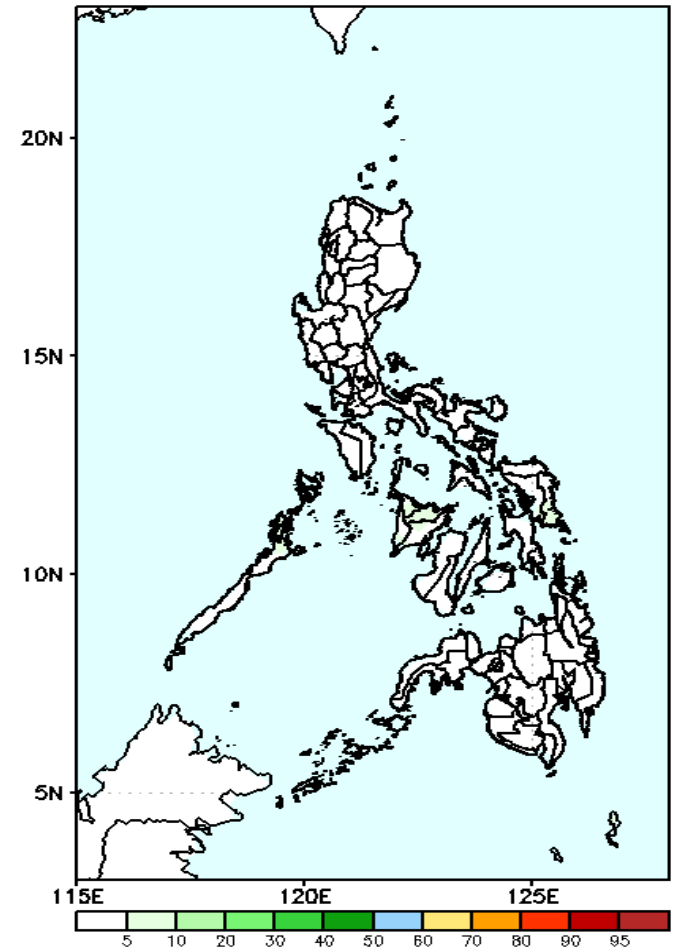
Less probability of rainfall to exceed 100mm in most parts of the country during the forecast period.

GEFS Week-2 Exceedance Prob. > 150mm
Valid: 20210325 - 20210331



Less probability of rainfall to exceed 150mm in most parts of the country during the forecast period.

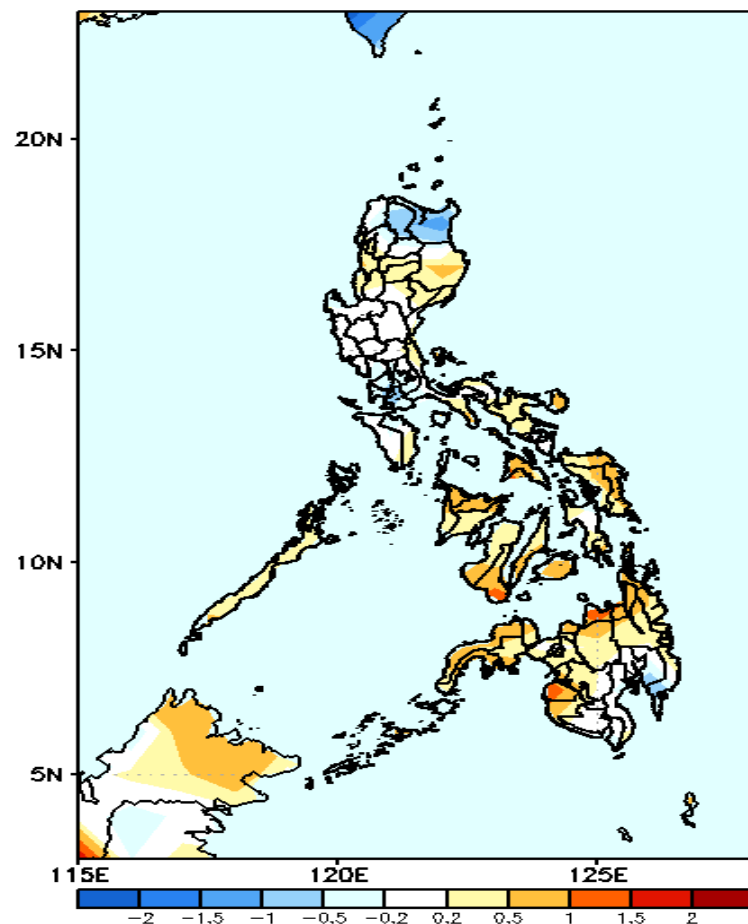
GEFS Week-2 Exceedance Prob. > 200mm
Valid: 20210325 - 20210331



Less probability of rainfall to exceed 200mm in most parts of the country during the forecast period.

GEFS Week-1 & 2 Forecasts: T2m Anomaly

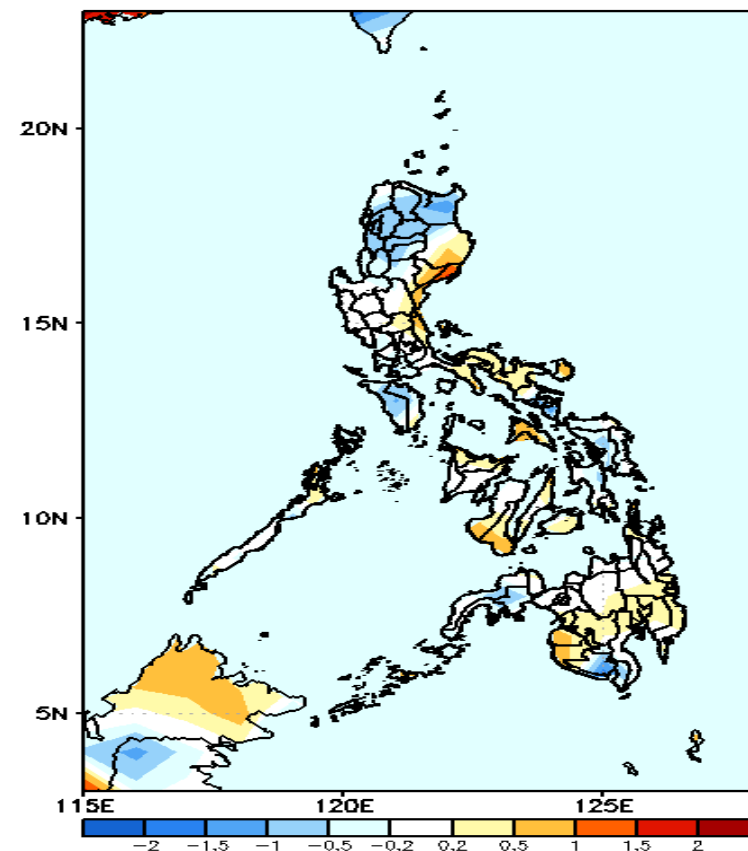
GEFS Week-1 T2m Anomaly
Valid: 20210318 – 20210324



2m Temperature Week 1: March 18-24, 2021

Slightly warmer to warmer than average surface air temperature will likely experience in most parts of the country except in Apayao and Cagayan were slightly cooler than average surface air temperature is expected during the forecast period.

GEFS Week-2 T2m Anomaly
Valid: 20210325 – 20210331



2m Temperature Week 2: March 25-31, 2021

Average to slightly warmer than average surface air temperature will likely experience in most parts of the country except in northern Luzon and Mindoro were slightly cooler than average surface air temperature is expected during the forecast period.