



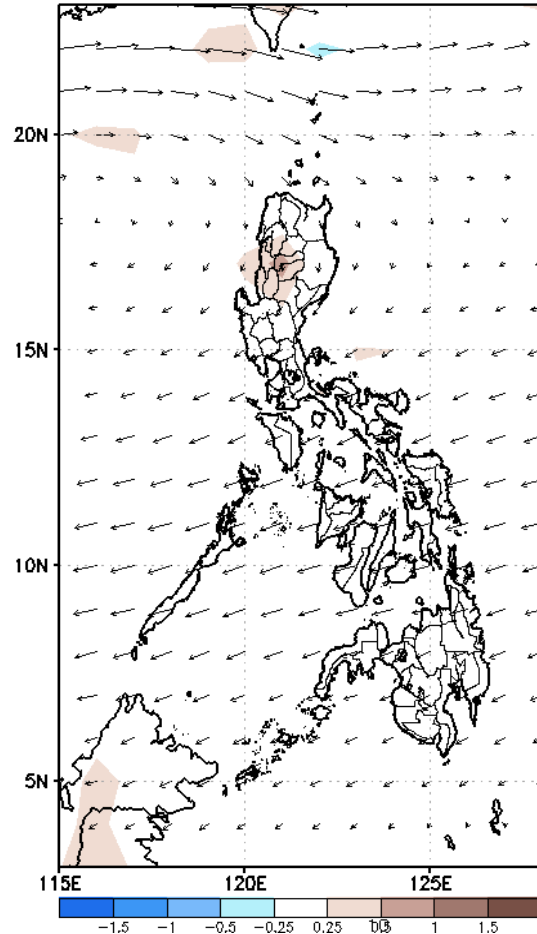
Week 1 & Week 2 Forecast for the Philippines using GEFS Model



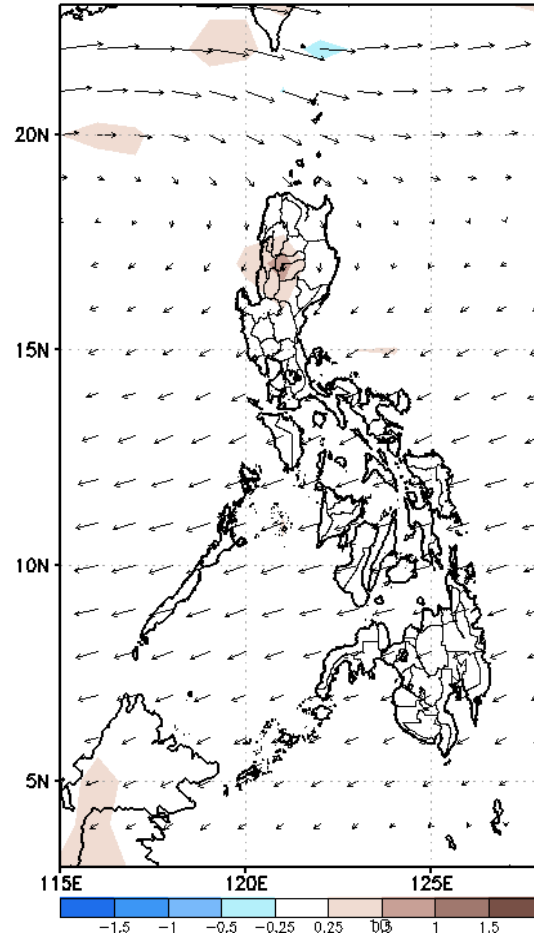
GEFS Week-1 Forecasts: Wind Anomaly Forecast

Week 1: Apr 19-25, 2023

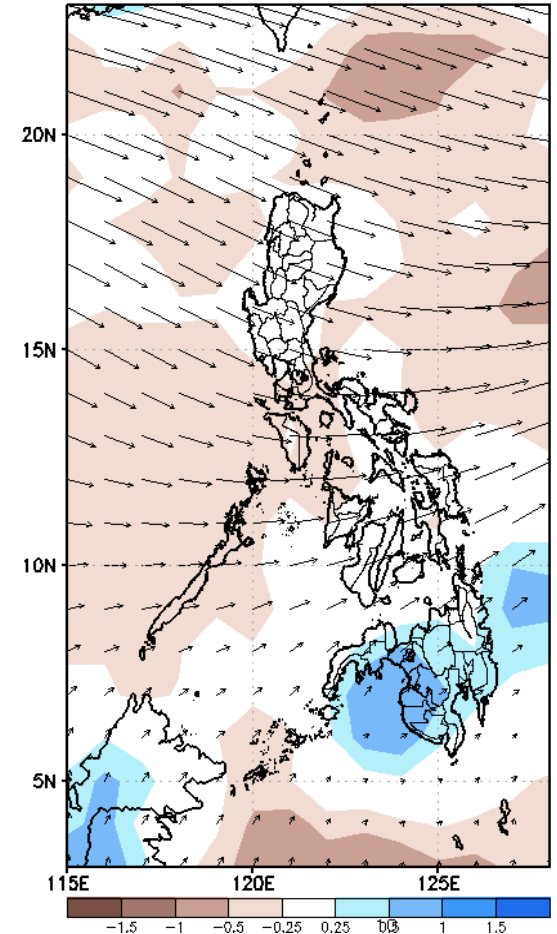
GEFS Week-1 850-hPa Divergence and Wind Anomaly
Valid: 20230419 - 20230425



GEFS Week-1 700-hPa Divergence and Wind Anomaly
Valid: 20230419 - 20230425

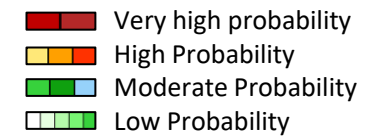


GEFS Week-1 200-hPa Divergence and Wind Anomaly
Valid: 20230419 - 20230425



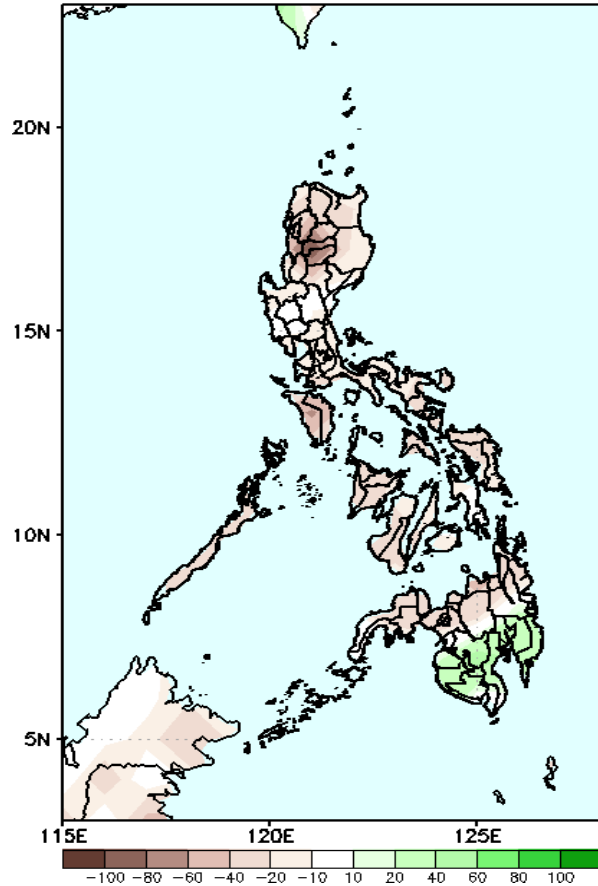
Easterlies is forecasted to affect most parts of the country; expect dry and hot weather during the forecast period.

Precipitation Anomaly and Exceedance Probability > 25/50 mm



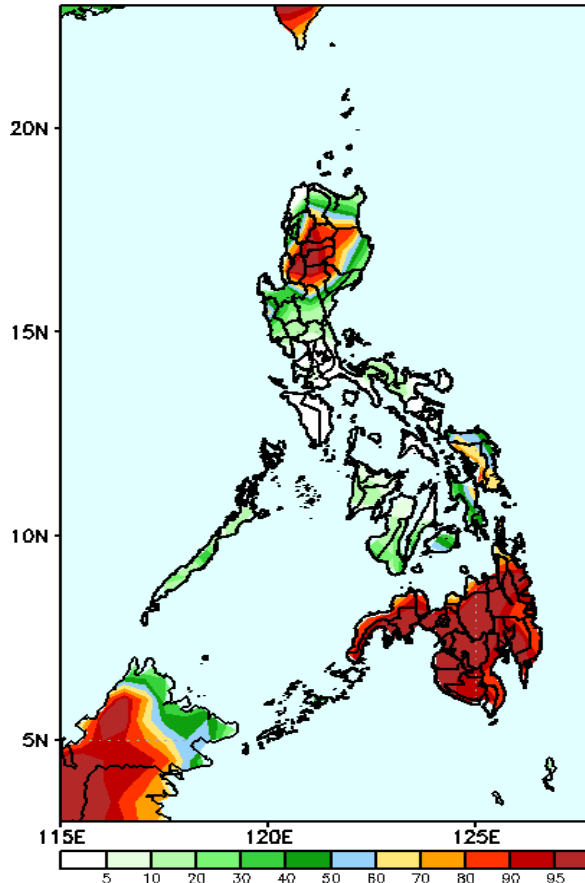
Week 1: Apr 19-25, 2023

GEFS Week-1 Precip Anomaly
Valid: 20230419 - 20230425



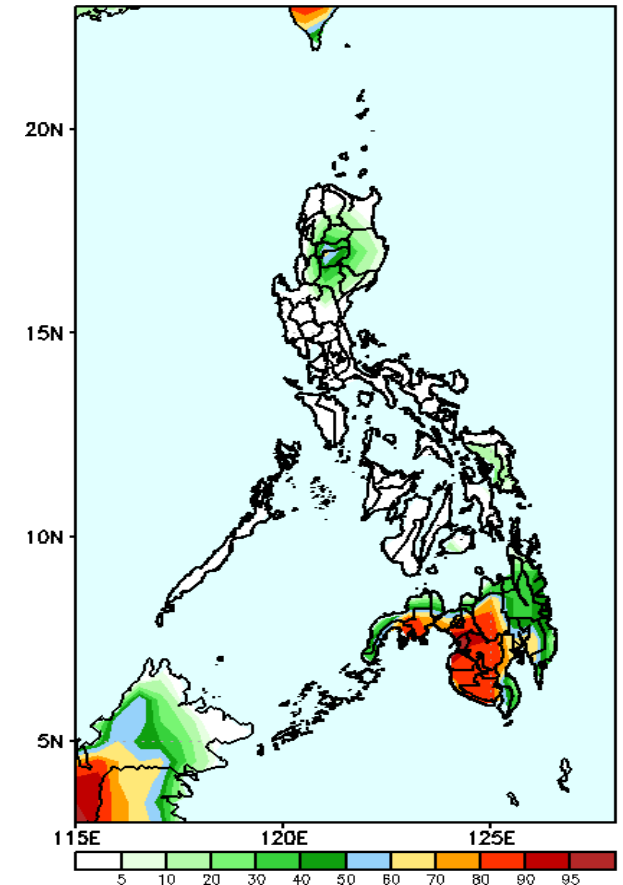
Rainfall deficit of 20-80mm is expected in most parts of the country except in some areas in Central Mindanao and most areas in southern Mindanao where there is 20-40mm increase of rainfall during the forecast period.

GEFS Week-1 Exceedance Prob. > 25mm
Valid: 20230419 - 20230425



High to a very high probability to exceed 25mm of rainfall in Mindanao, some parts of Samar provinces, and most parts of Northern Luzon while low to moderate chance over the rest of the country.

GEFS Week-1 Exceedance Prob. > 50mm
Valid: 20230419 - 20230425



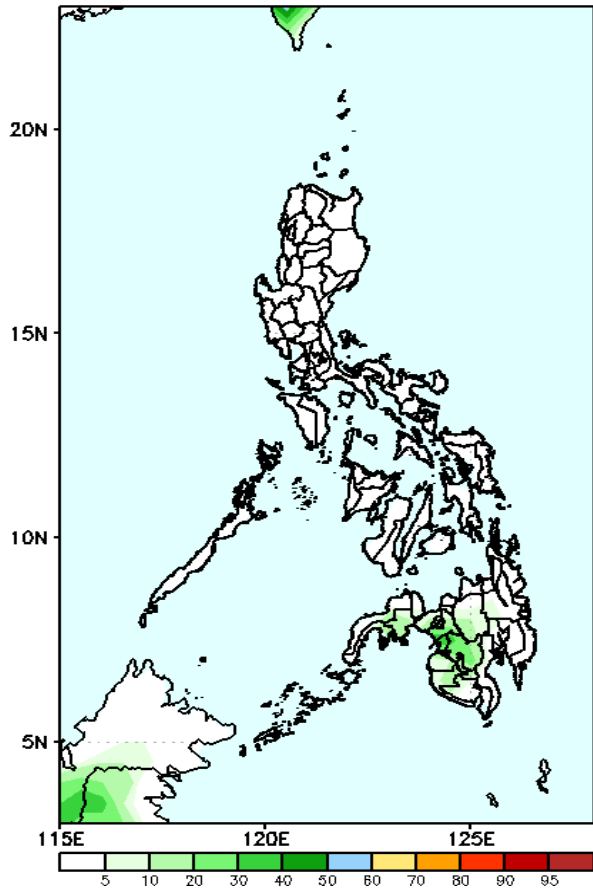
Moderate to High probability to exceed 50mm of rainfall over most parts of Mindanao and portions of CAR while low chance over the rest of the country.

Exceedance Probability > 100/150/200 mm

Week 1: Apr 19-25, 2023

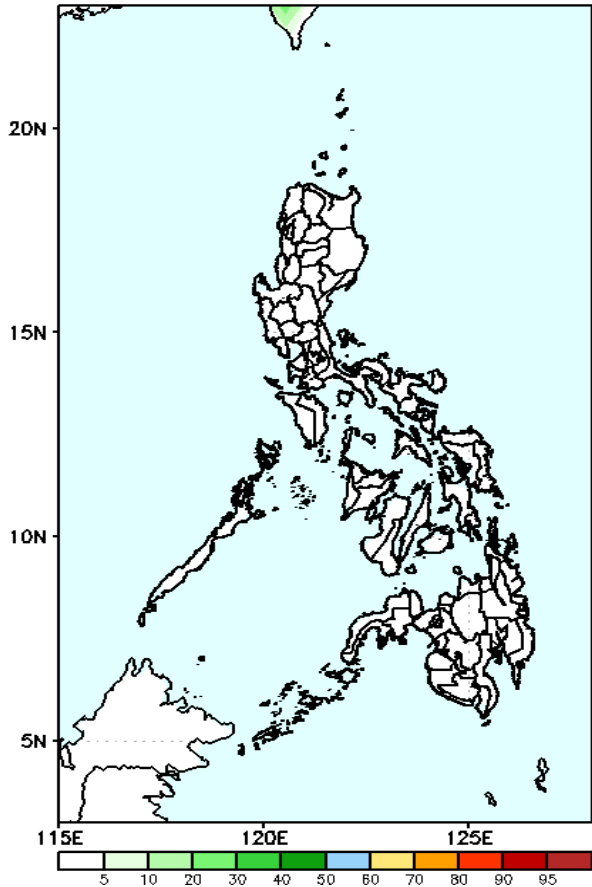
- Very high probability
- High Probability
- Moderate Probability
- Low Probability

GEFS Week-1 Exceedance Prob. > 100mm
Valid: 20230419 - 20230425



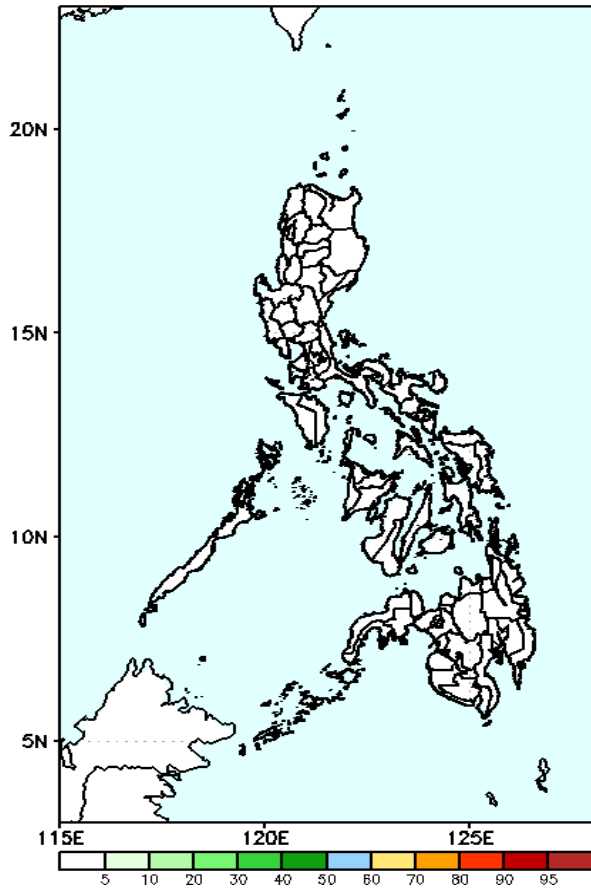
Low probability of rainfall to exceed 100mm in most parts of the country during the forecast period.

GEFS Week-1 Exceedance Prob. > 150mm
Valid: 20230419 - 20230425



Low probability of rainfall to exceed 150mm in most parts of the country during the forecast period.

GEFS Week-1 Exceedance Prob. > 200mm
Valid: 20230419 - 20230425

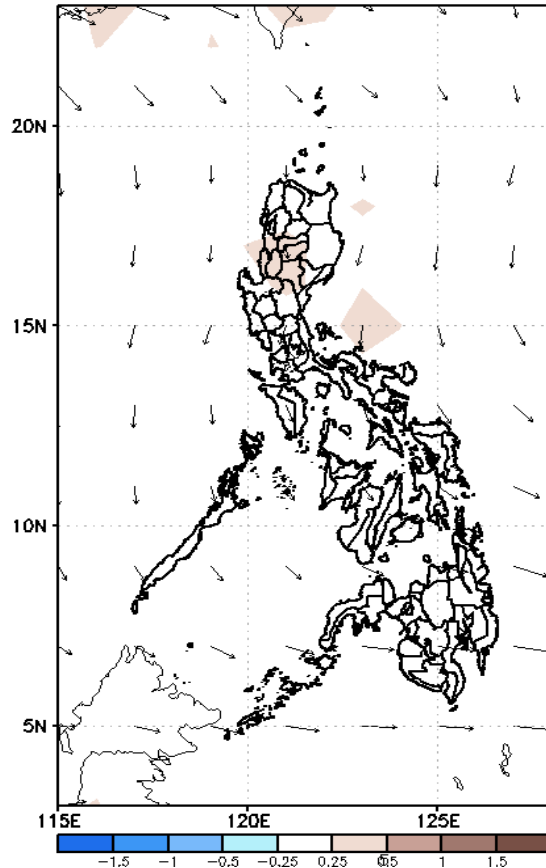


Low probability of rainfall to exceed 200mm in most parts of the country during the forecast period.

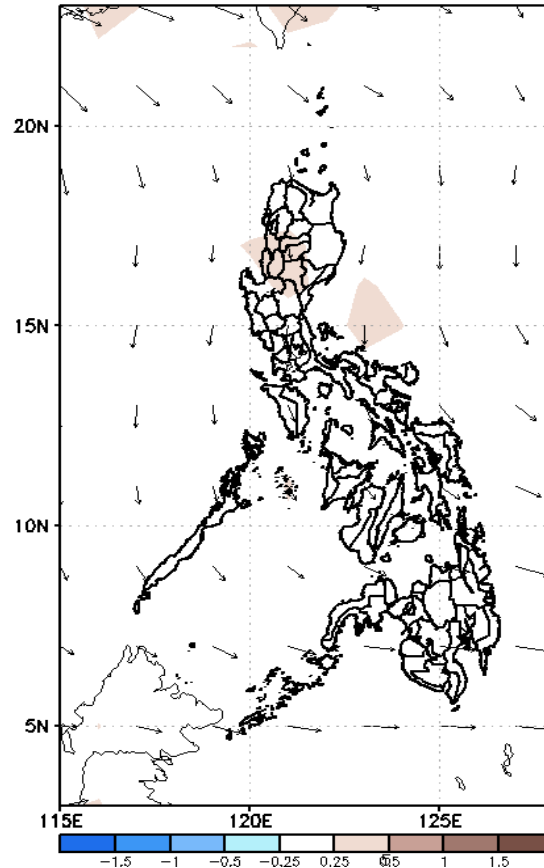
GEFS Week-2 Forecasts: Wind Anomaly Forecast

Week 2: Apr 26 – May 02, 2023

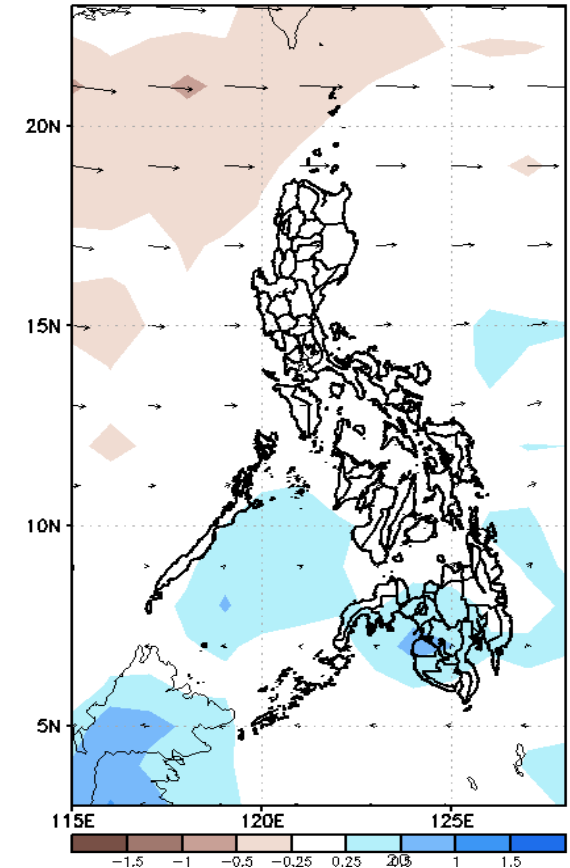
GEFS Week-2 850-hPa Divergence and Wind Anomaly
Valid: 20230426 – 20230502



GEFS Week-2 700-hPa Divergence and Wind Anomaly
Valid: 20230426 – 20230502

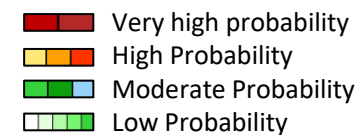


GEFS week-2 200-hPa Divergence and Wind Anomaly
Valid: 20230426 – 20230502



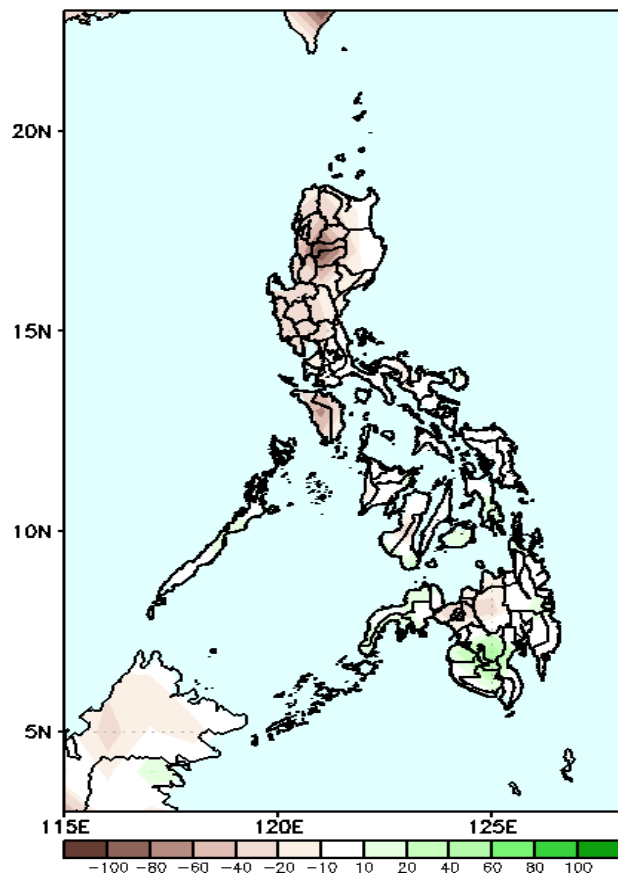
Easterlies is forecasted to affect most parts of the country; expect dry and hot weather during the forecast period.

Precipitation Anomaly and Exceedance Probability > 25/50 mm



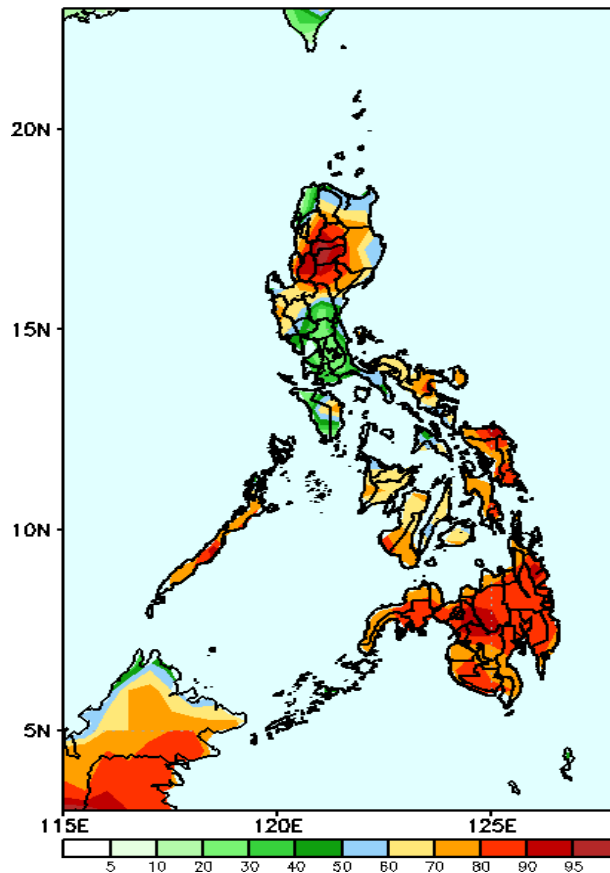
Week 2: Apr 26 – May 02, 2023

GEFS Week-2 Precip Anomaly
Valid: 20230426 – 20230502



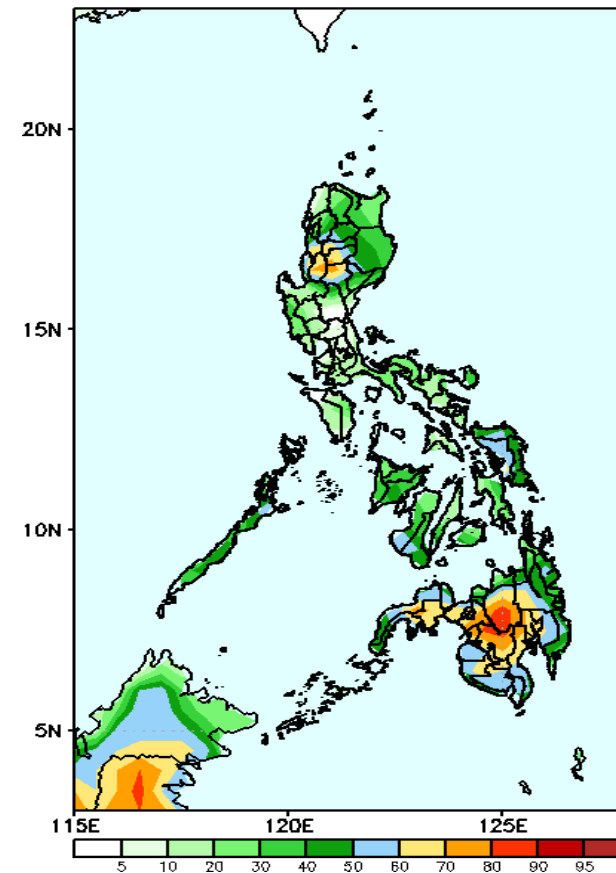
Rainfall deficit of 40-80mm is expected in most parts of the country except in some areas in Mindanao where there is 20-40mm increase of rainfall during the forecast period.

GEFS Week-2 Exceedance Prob. > 25mm
Valid: 20230426 – 20230502



High to a very high probability to exceed 25mm of rainfall over Mindanao, Visayas, Bicol Region, Palawan, Zambales, Tarlac, and most parts of Northern Luzon while moderate to high probability over the rest of Luzon.

GEFS Week-2 Exceedance Prob. > 50mm
Valid: 20230426 – 20230502



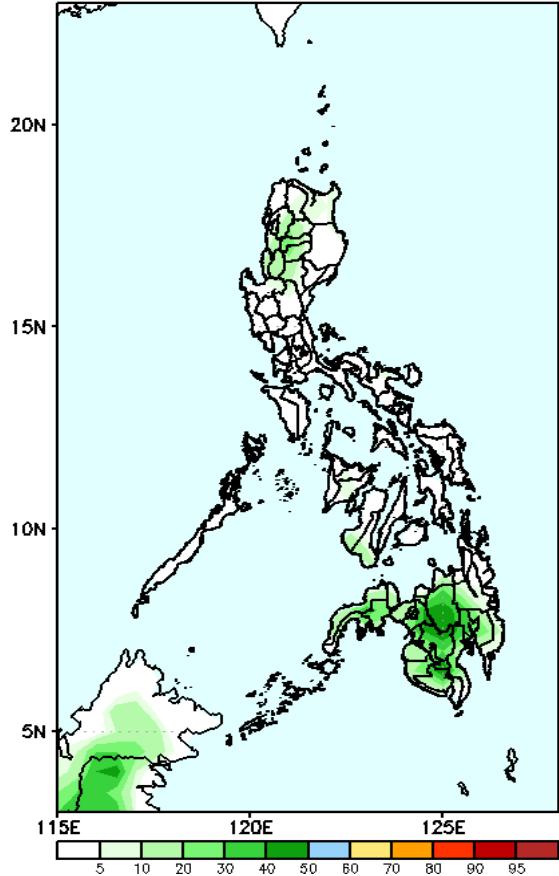
Moderate to High probability to exceed 50mm of rainfall over Mindanao, Eastern and Western Visayas, Palawan, and most parts of Ilocos Region and CAR while low likelihood over the rest of the country.



Exceedance Probability > 100/150/200 mm

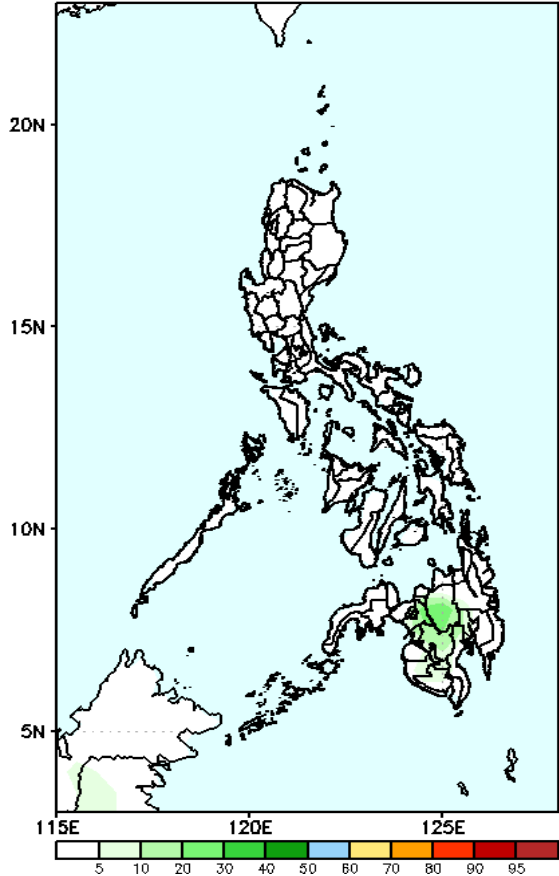
Week 2: Apr 26 – May 02, 2023

GEFS Week-2 Exceedance Prob. > 100mm
Valid: 20230426 – 20230502



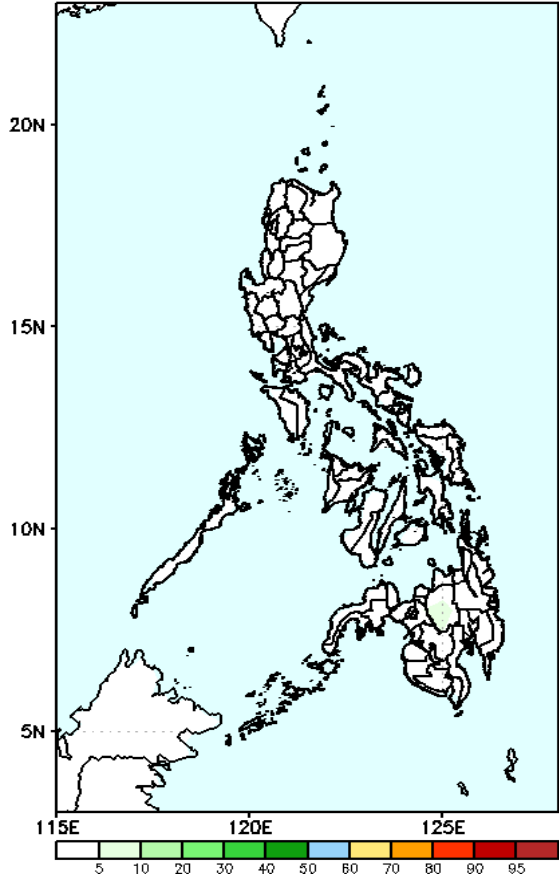
Moderate probability to exceed 100mm of rainfall over portions of Northern Mindanao, SOCCSKSARGEN, BARMM, and Davao Region while low likelihood over the rest of the country.

GEFS Week-2 Exceedance Prob. > 150mm
Valid: 20230426 – 20230502



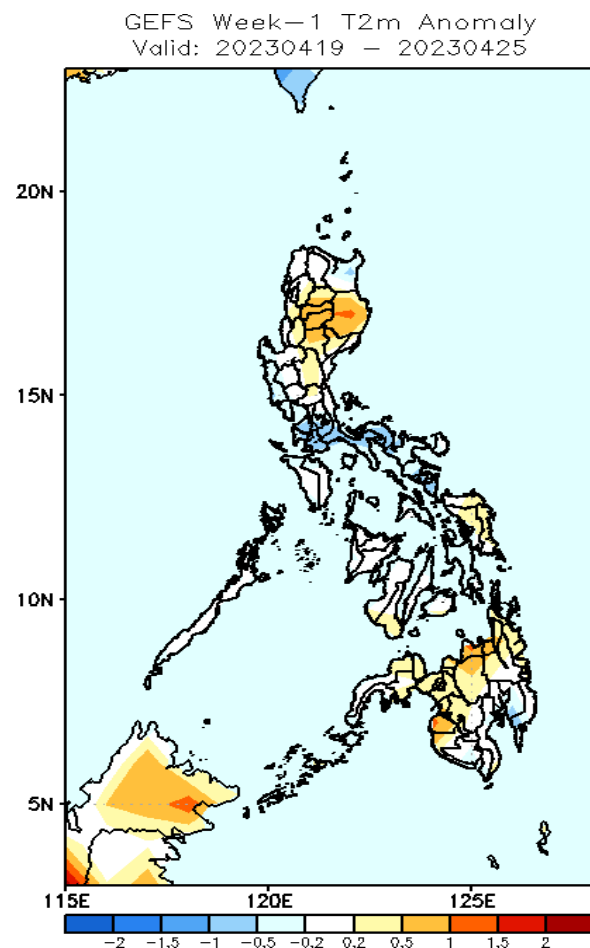
Low probability of rainfall to exceed 150mm in most parts of the country during the forecast period.

GEFS Week-2 Exceedance Prob. > 200mm
Valid: 20230426 – 20230502



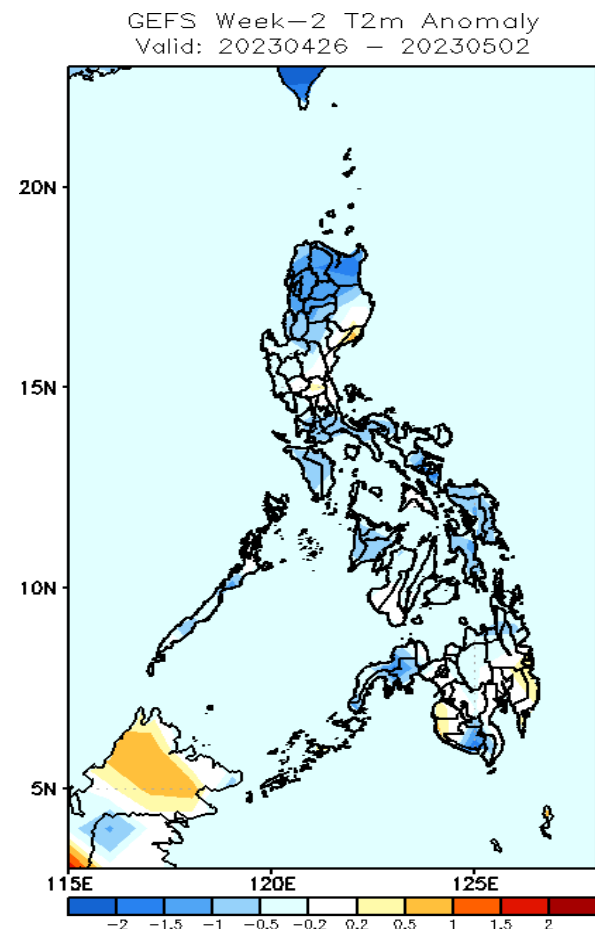
Low probability of rainfall to exceed 200mm in most parts of the country during the forecast period.

GEFS Week-1 & 2 Forecasts: T2m Anomaly



2m Temperature Week 1: Apr 19-25, 2023

Average to slightly warmer than average surface air temperature will likely experience in most parts of the country except in southern Luzon and some areas in southern Luzon where slightly cooler will likely have during the forecast period.



2m Temperature Week 2: Apr 26 – May 02, 2023

Average to cooler than average surface air temperature will likely experience in most parts of the country except in some areas in Davao region and western Mindanao where slightly warmer surface air temp. will be likely during the forecast period.