



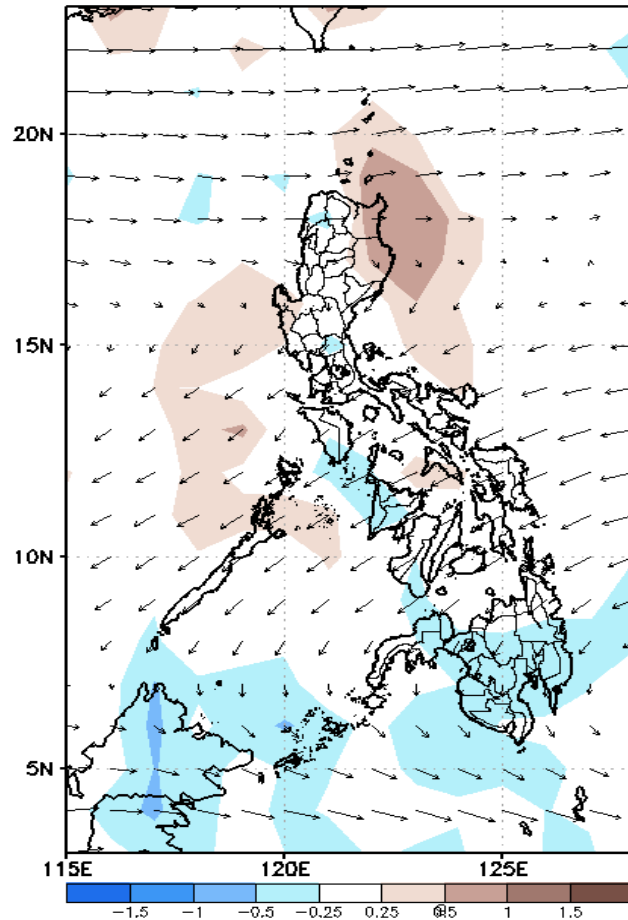
Week 1 & Week 2 Forecast for the Philippines using GEFS Model



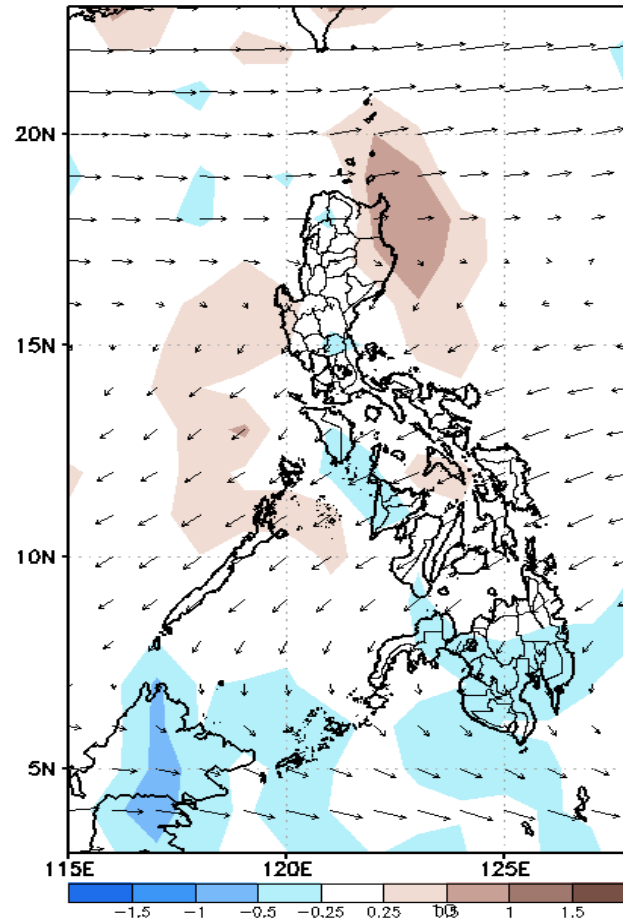
GEFS Week-1 Forecasts: Wind Anomaly Forecast

Week 1: Dec 19-25, 2022

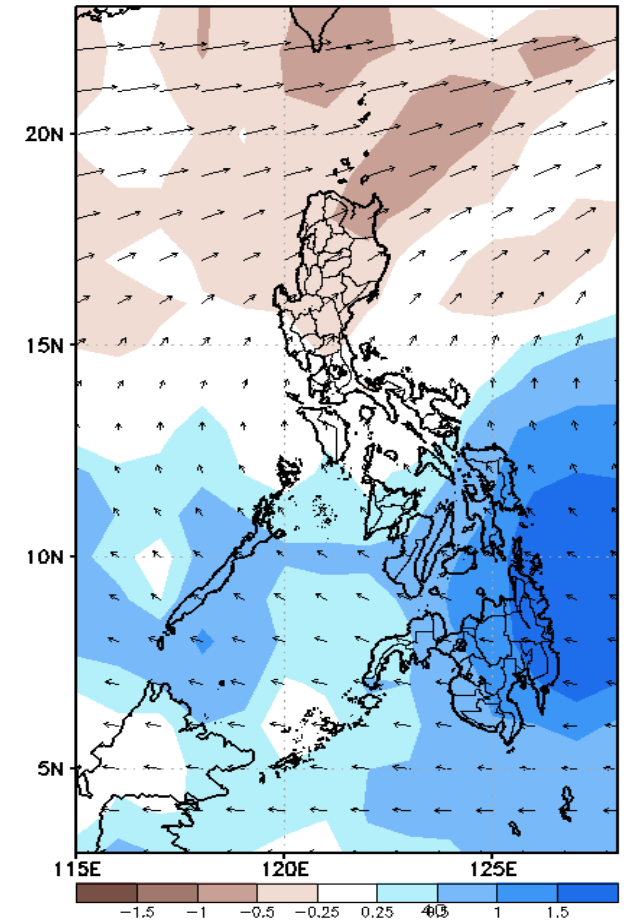
GEFS Week-1 850-hPa Divergence and Wind Anom
Valid: 20221219 - 20221225



GEFS Week-1 700-hPa Divergence and Wind Anom
Valid: 20221219 - 20221225



GEFS Week-1 200-hPa Divergence and Wind Anom
Valid: 20221219 - 20221225

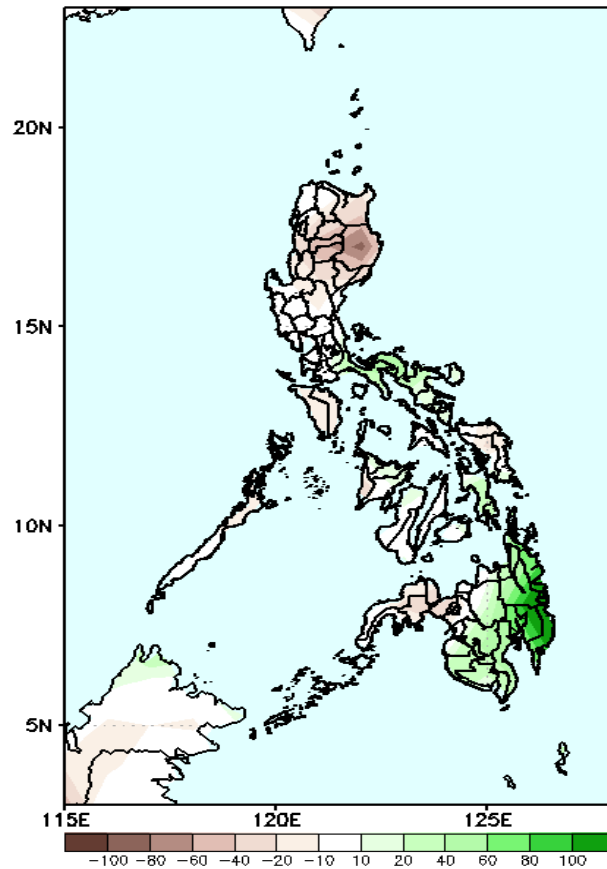


Northeast monsoon affecting most parts of Luzon. Easterlies affecting Visaya and Mindanao during the forecast period.

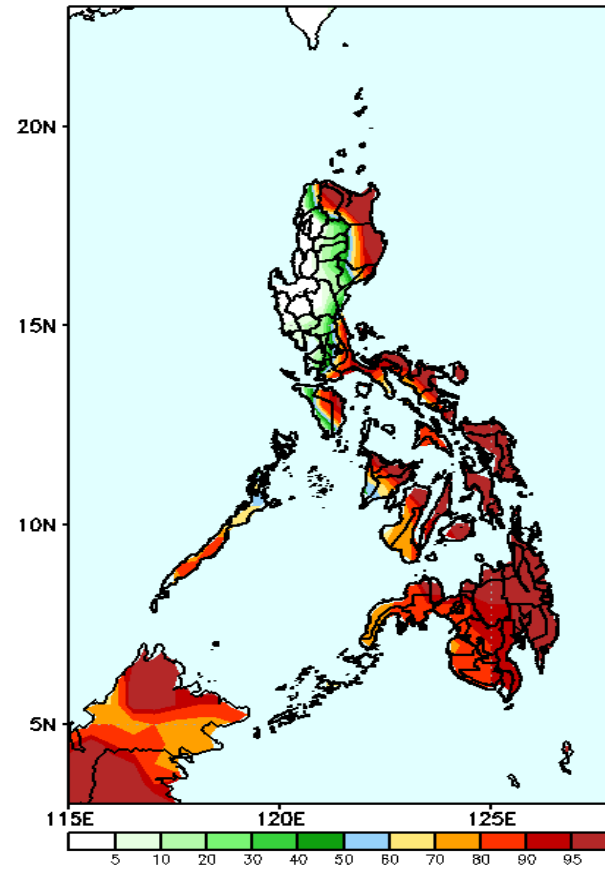
Precipitation Anomaly and Exceedance Probability > 25/50 mm

Week 1: Dec 19-25, 2022

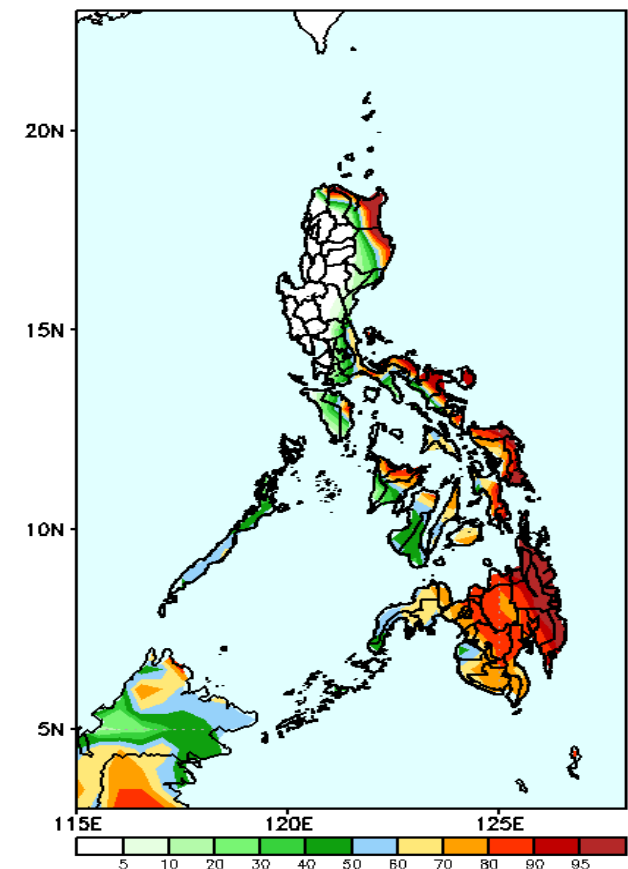
GEFS Week-1 Precip Anomaly
Valid: 20221219 - 20221225



GEFS Week-1 Exceedance Prob. > 25mm
Valid: 20221219 - 20221225



GEFS Week-1 Exceedance Prob. > 50mm
Valid: 20221219 - 20221225



Rainfall deficit of 20-50mm in some areas in northern Luzon, Visayas and Zamboanga Peninsula while 40-60mm increase of rainfall is forecasted in Bicol Region and up to 100mm in Mindanao during the forecast period.

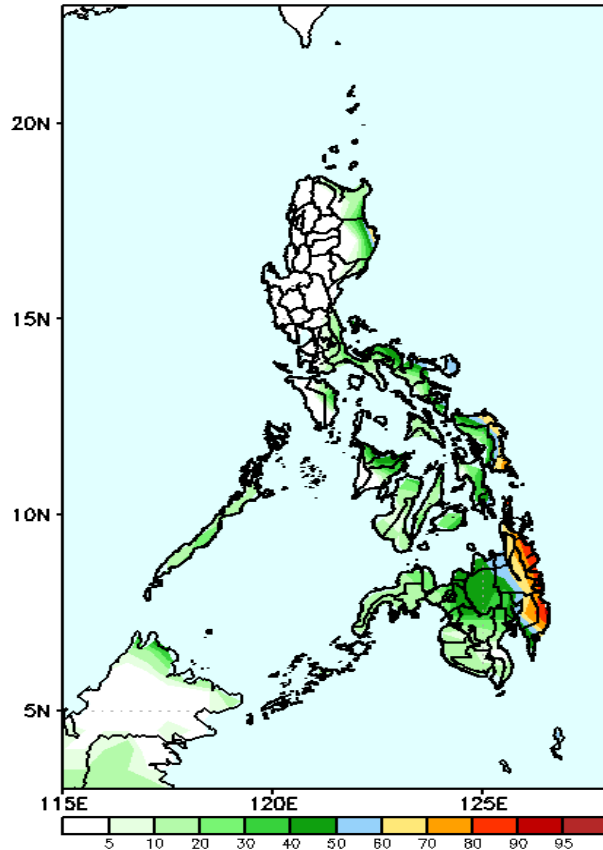
High probability of rainfall to exceed 25mm in most parts of the country except Ilocos region, most parts of CAR, Central Luzon, Cavite, Laguna and Rizal during the forecast period.

High probability of rainfall to exceed 50mm in the eastern sections of Cagayan, Isabela, most parts of Bicol region, Eastern and Central Visayas, Capiz, Aklan and most parts of Mindanao while less likely for the rest of the country during the forecast period.

Exceedance Probability > 100/150/200 mm

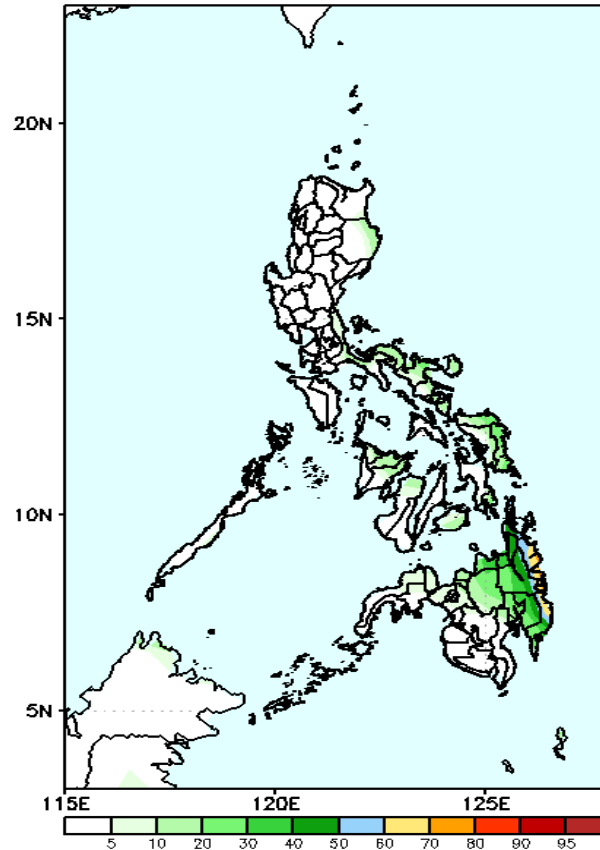
Week 1: Dec 19-25, 2022

GEFS Week-1 Exceedance Prob. > 100mm
Valid: 20221219 – 20221225



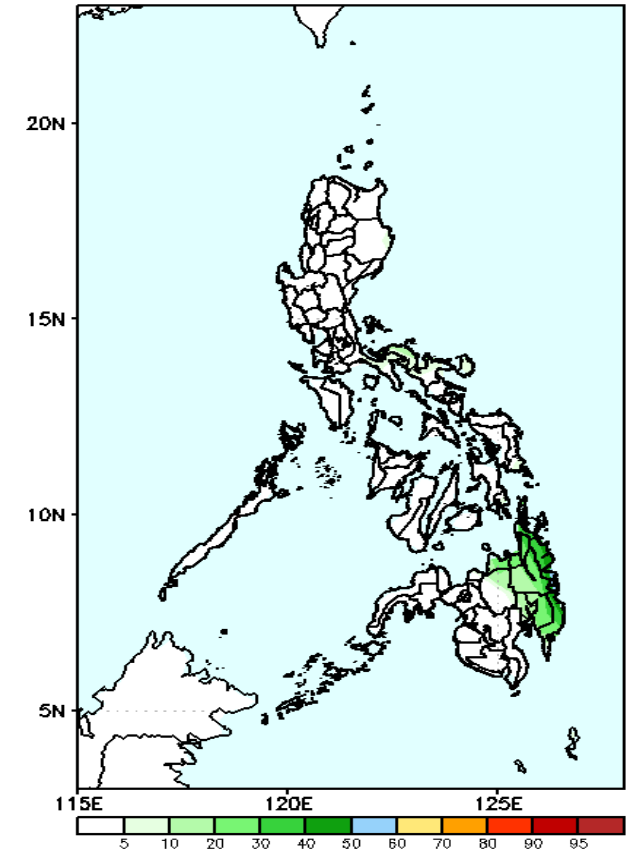
Low probability of rainfall to exceed 100mm in most parts of the country except most parts of Eastern Mindanao during the forecast period.

GEFS Week-1 Exceedance Prob. > 150mm
Valid: 20221219 – 20221225



Low probability of rainfall to 150mm in most parts of the country exceed during the forecast period.

GEFS Week-1 Exceedance Prob. > 200mm
Valid: 20221219 – 20221225

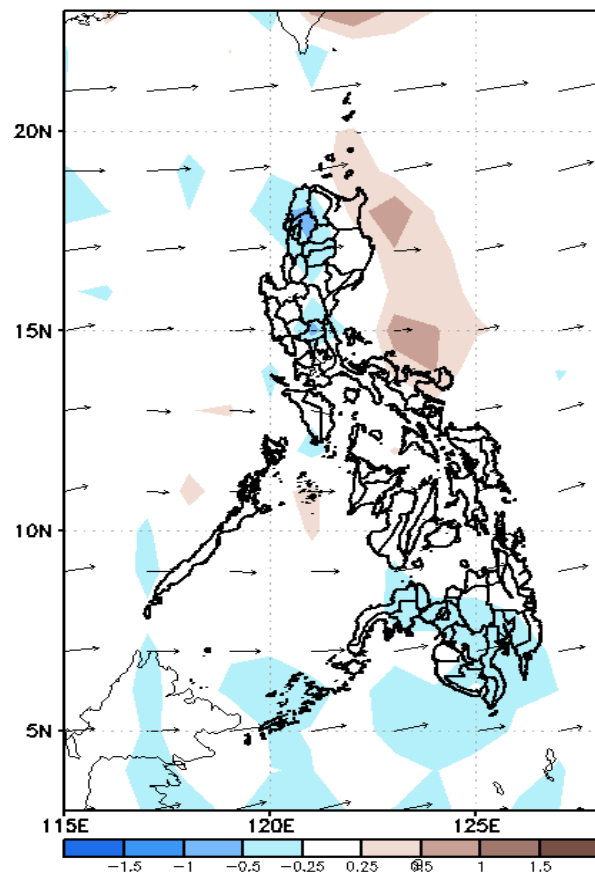


Low probability of rainfall to exceed 200mm in most parts of the country during the forecast period.

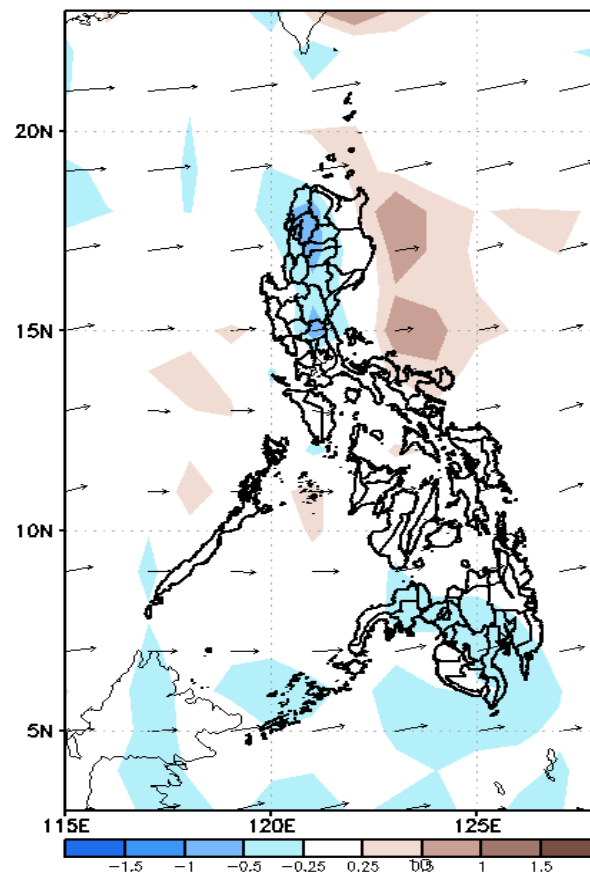
GEFS Week-2 Forecasts: Wind Anomaly Forecast

Week 2: Dec 26- Jan 01, 2022

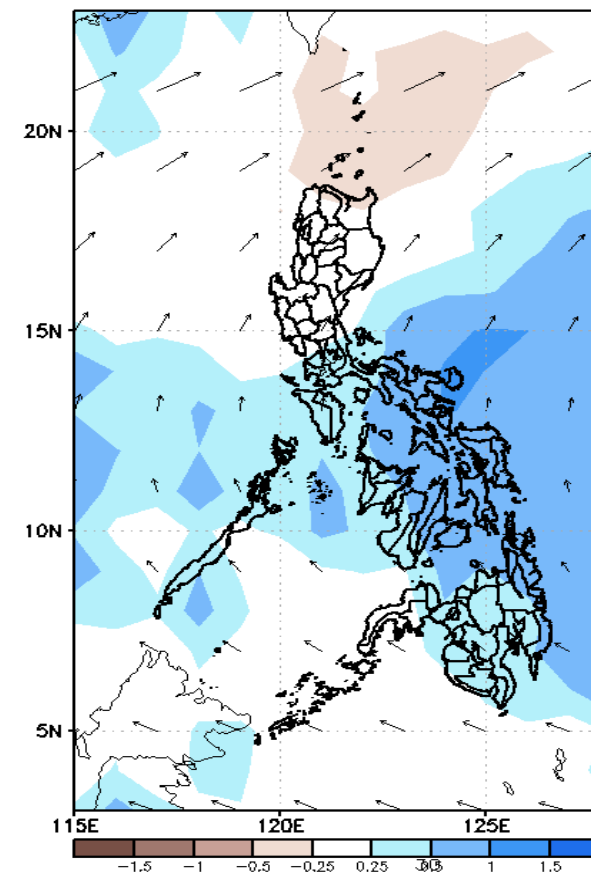
GEFS Week-2 850-hPa Divergence and Wind Anom
Valid: 20221226 - 20230101



GEFS Week-2 700-hPa Divergence and Wind Anom
Valid: 20221226 - 20230101



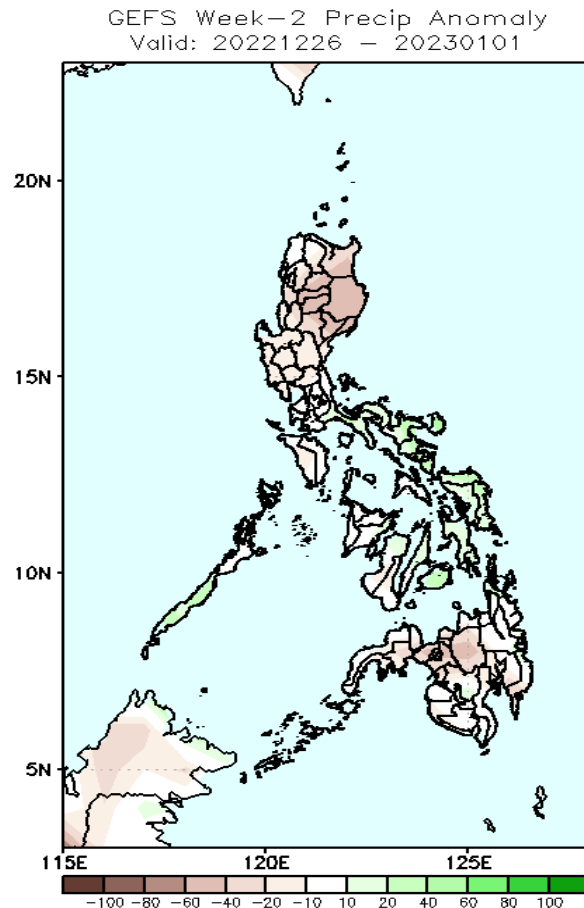
GEFS week-2 200-hPa Divergence and Wind Anom
Valid: 20221226 - 20230101



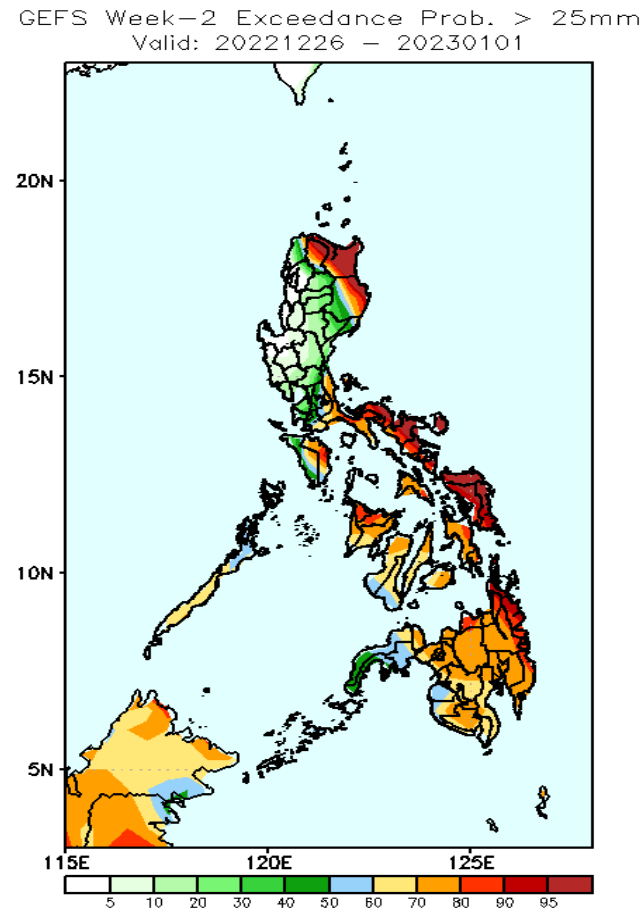
Northeast monsoon affecting most parts of Luzon and Eastern Visayas. Easterlies affecting Mindanao during the forecast period.

Precipitation Anomaly and Exceedance Probability > 25/50 mm

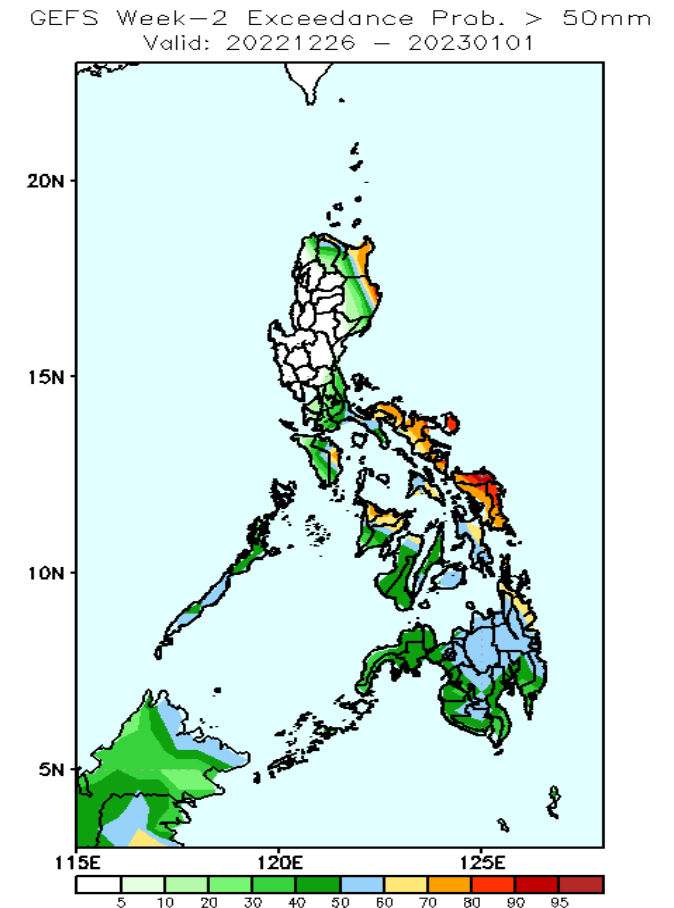
Week 2: Dec 26- Jan 01, 2022



Rainfall deficit of 40-70mm is expected in most parts of CAR, Cagayan Valley and northern Mindanao while 40-70mm increase of rainfall in most parts of Bicol Region, Palawan and eastern & central Visayas during the forecast period.



High probability of rainfall to exceed 25mm in Apayao, Cagayan, Isabela, Quezon, Bicol region, MIMAROPA and most parts of Visayas and Mindanao while less likely for the rest of Luzon during the forecast period.

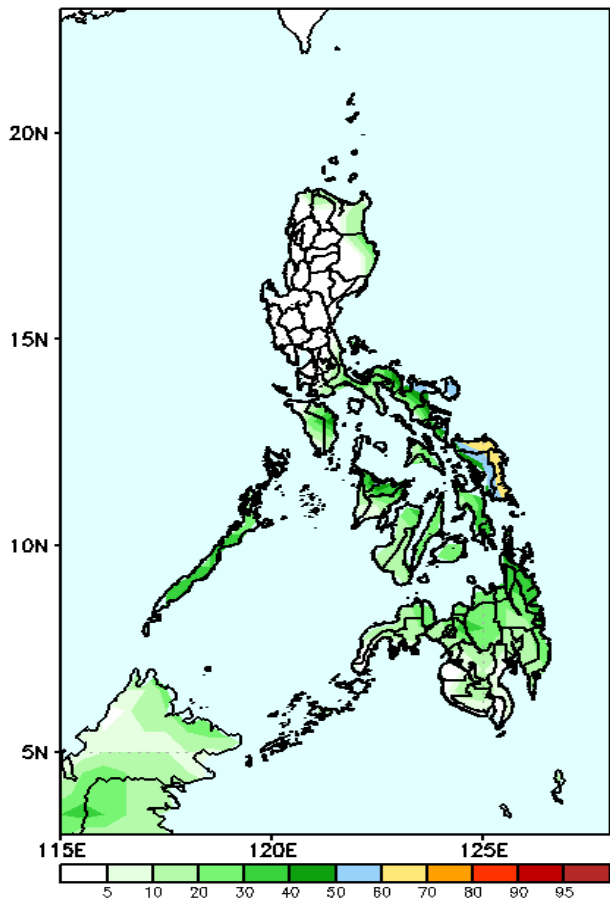


High probability of rainfall to exceed 50mm in the eastern sections of Cagayan and Isabela, most parts of Bicol region, Eastern Visayas, Capiz, Aklan and Surigao provinces while less likely for the rest of the country during the forecast period.

Exceedance Probability > 100/150/200 mm

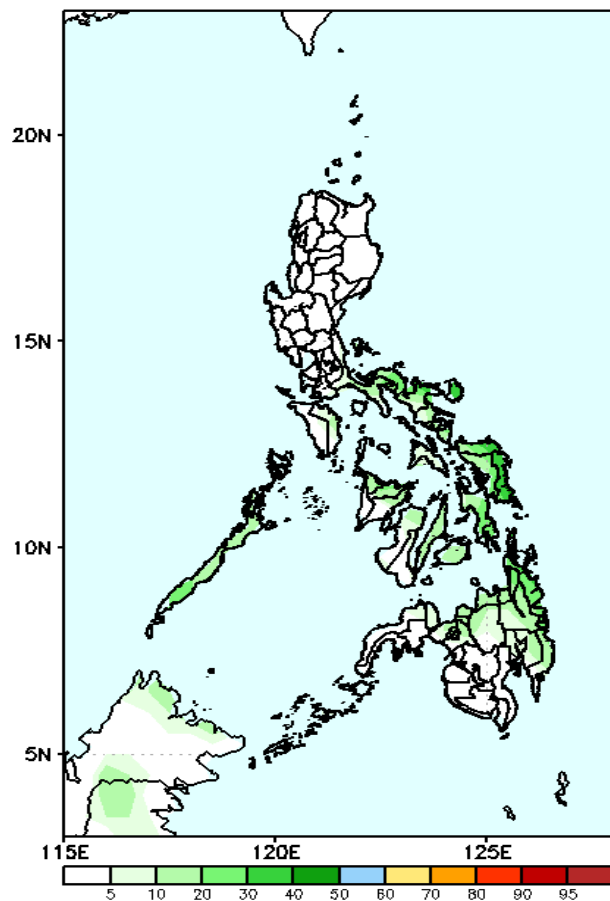
Week 2: Dec 26- Jan 01, 2022

GEFS Week-2 Exceedance Prob. > 100mm
Valid: 20221226 – 20230101



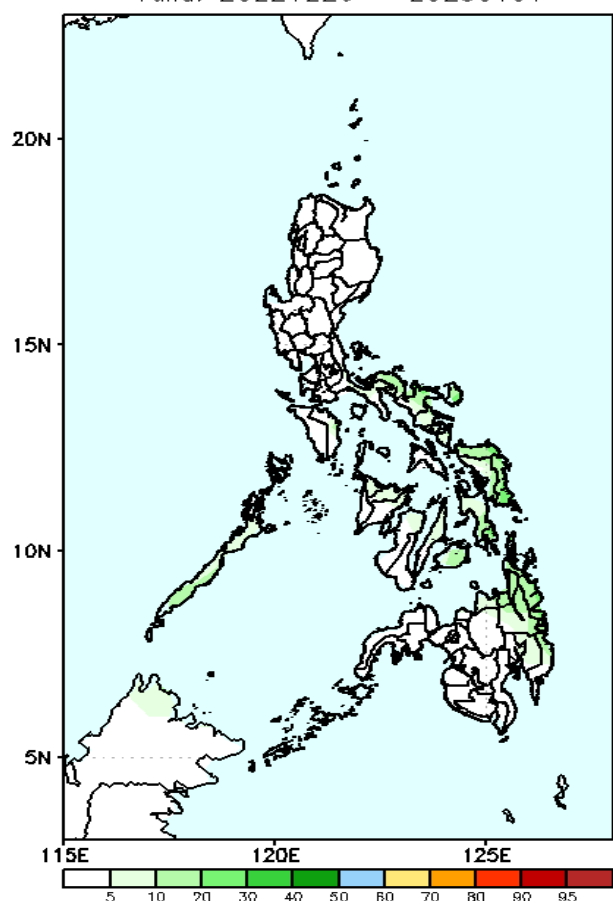
Low probability of rainfall to exceed 100mm in most parts of the country except Northern and Eastern Samar during the forecast period.

GEFS Week-2 Exceedance Prob. > 150mm
Valid: 20221226 – 20230101



Low probability of rainfall to exceed 150mm in most parts of the country during the forecast period.

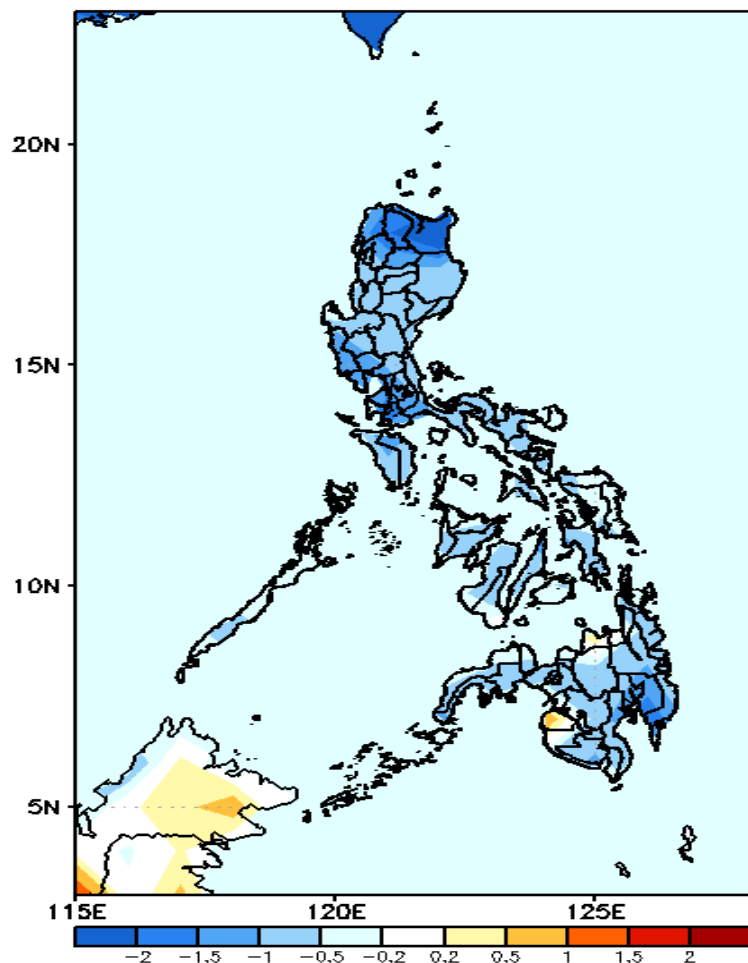
GEFS Week-2 Exceedance Prob. > 200mm
Valid: 20221226 – 20230101



Low probability of rainfall to exceed 200mm in most parts of the country during the forecast period.

GEFS Week-1 & 2 Forecasts: T2m Anomaly

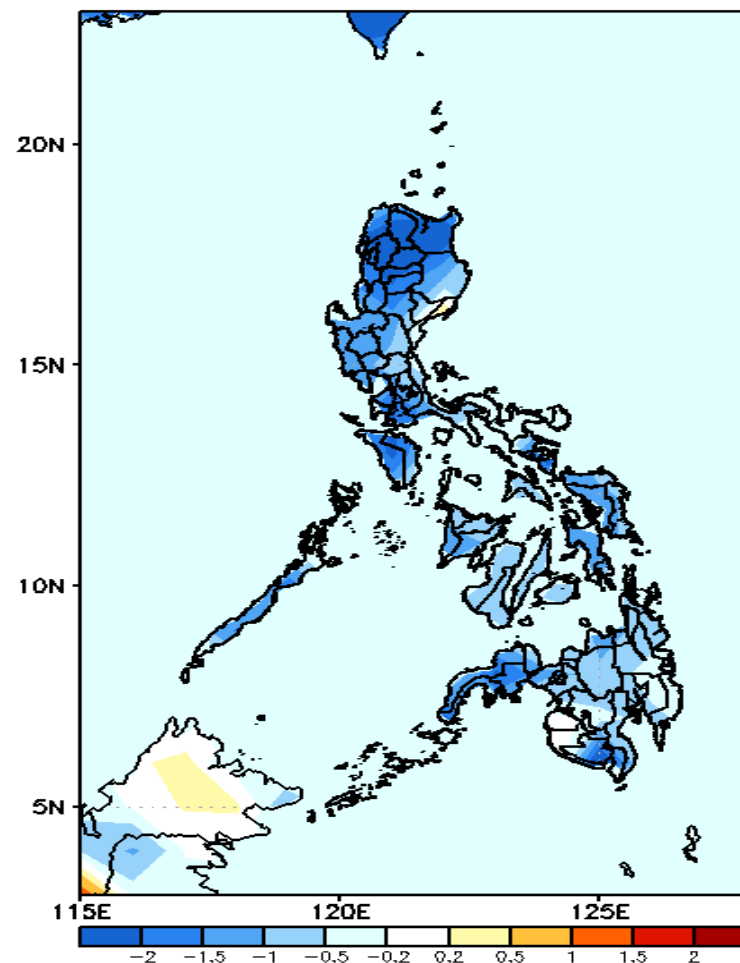
GEFS Week-1 T2m Anomaly
Valid: 20221219 – 20221225



2m Temperature Week 1: Dec 19-25, 2022

Slightly cooler to cooler than average surface air temperature will likely experience in most parts of the country during the forecast period.

GEFS Week-2 T2m Anomaly
Valid: 20221226 – 20230101



2m Temperature Week 2: Dec 26- Jan 01, 2023

Slightly cooler to cooler than average surface air temperature will likely experience in most parts of the country during the forecast period.