



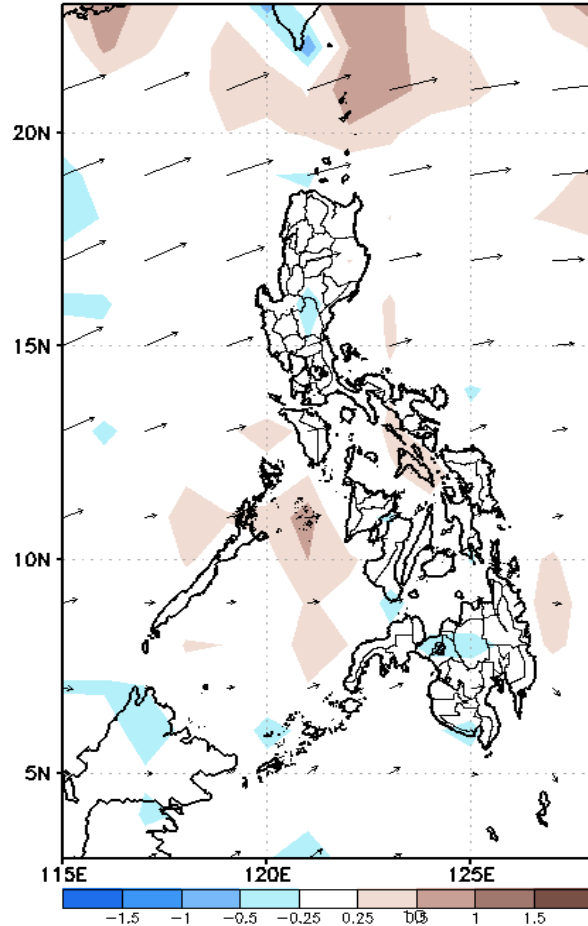
# Week 1 & Week 2 Forecast for the Philippines using GEFS Model



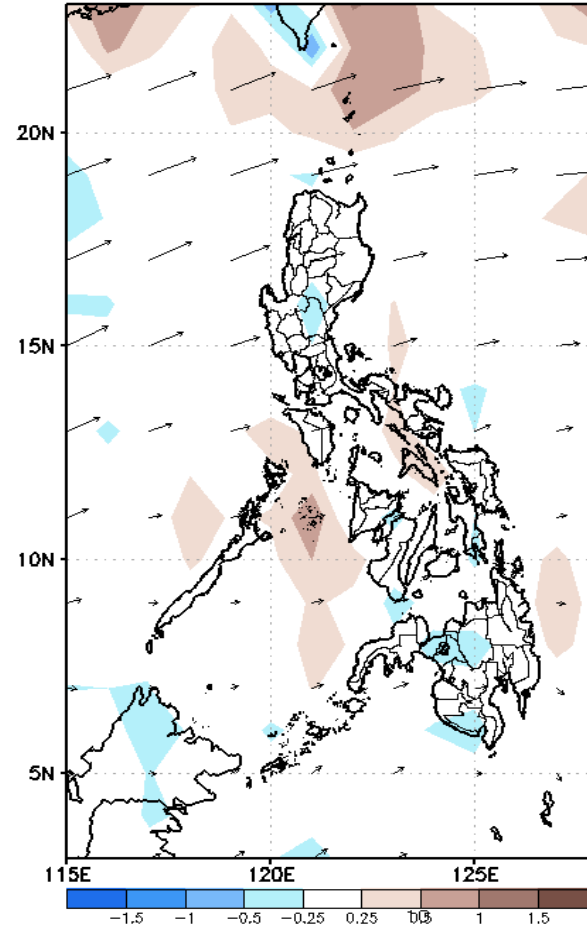
# GEFS Week-1 Forecasts: Divergence & Wind Anomaly

**Week 1: Jan 19-25, 2022**

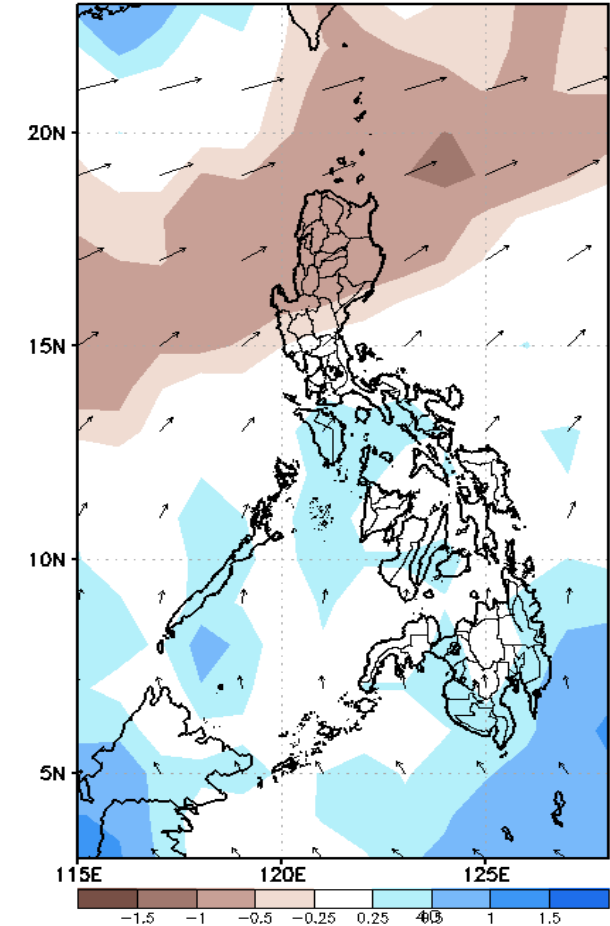
GEFS Week-1 850-hPa Divergence and Wind Anom  
Valid: 20220119 - 20220125



GEFS Week-1 700-hPa Divergence and Wind Anom  
Valid: 20220119 - 20220125



GEFS Week-1 200-hPa Divergence and Wind Anom  
Valid: 20220119 - 20220125

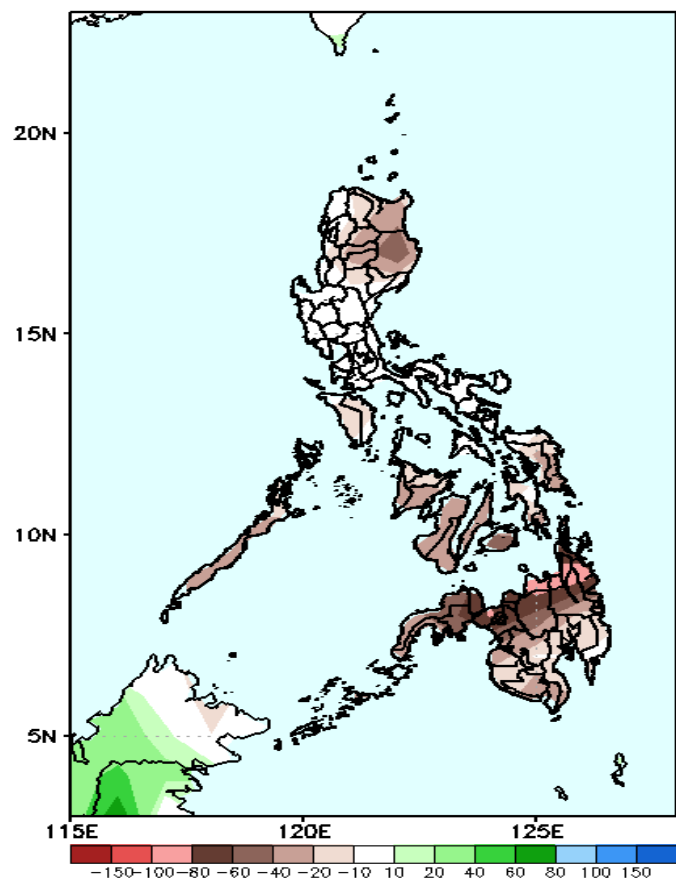


Upper and low level Divergence suggest a likelihood of light to moderate precipitation in some parts of Southern Luzon, Visayas and Mindanao. Northeast Monsoon affecting eastern sections of Northern and Central Luzon while Easterlies affecting the rest of the country during the forecast period.

# Precipitation Anomaly and Exceedance Probability > 25/50 mm

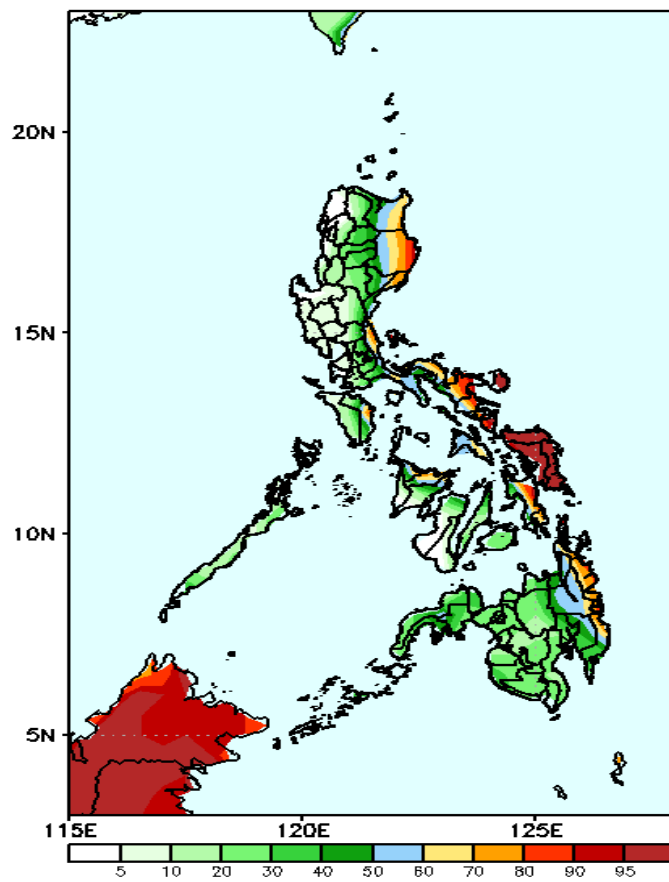
Week 1: Jan 19-25, 2022

GEFS Week-1 Precip Anomaly  
Valid: 20220119 - 20220125



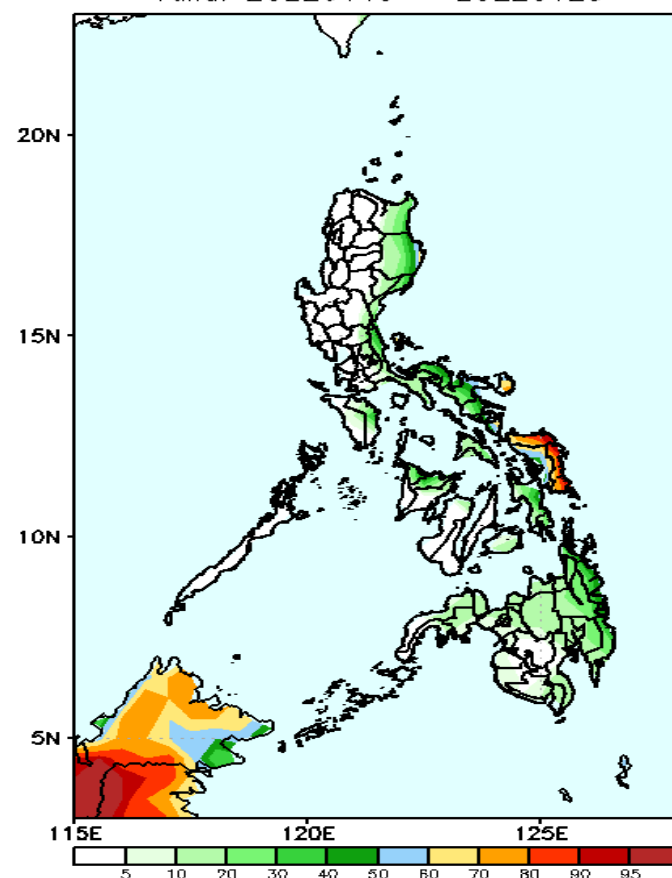
Rainfall deficit of 20-80mm is expected in most parts of the country and up to 100mm in northern Mindanao during the forecast period.

GEFS Week-1 Exceedance Prob. > 25mm  
Valid: 20220119 - 20220125



High probability of rainfall to exceed 25mm in eastern part of Isabela, most parts of Bicol Region, Eastern Visayas, and eastern parts of CARAGA & Davao Region while less likely for the rest of the country during the forecast period.

GEFS Week-1 Exceedance Prob. > 50mm  
Valid: 20220119 - 20220125



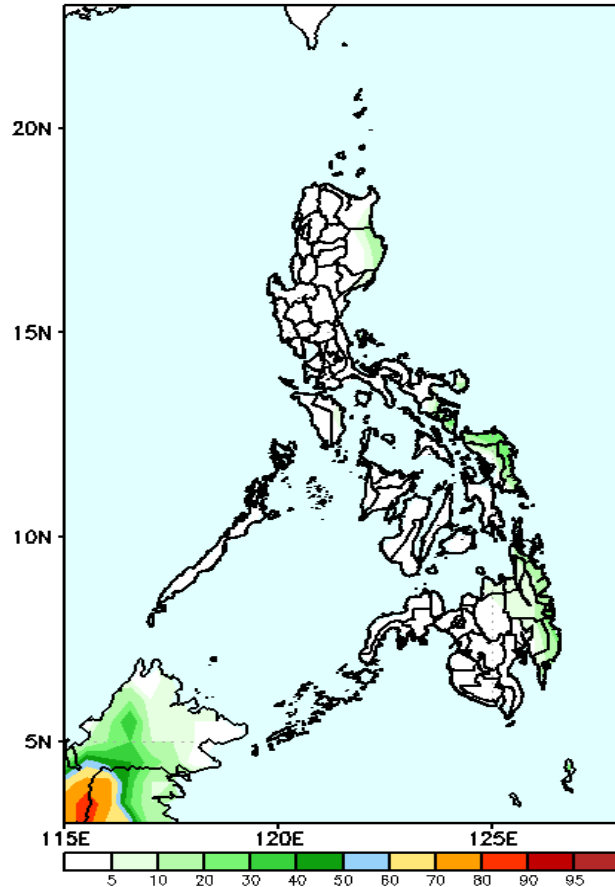
High probability of rainfall to exceed 50mm in Northern & Eastern Samar while less likely for the rest of the country during the forecast period.



# Exceedance Probability > 100/150/200 mm

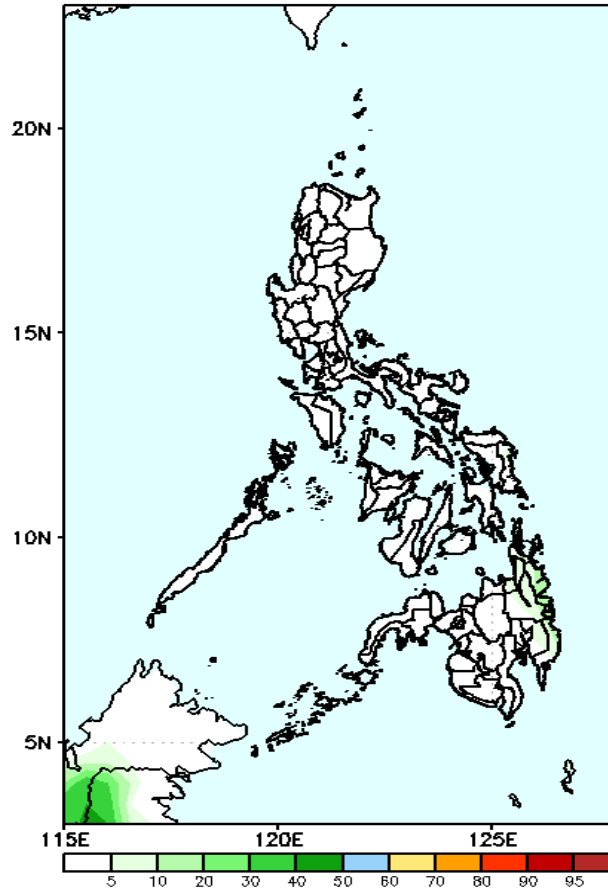
**Week 1: Jan 19-25, 2022**

GEFS Week-1 Exceedance Prob. > 100mm  
Valid: 20220119 – 20220125



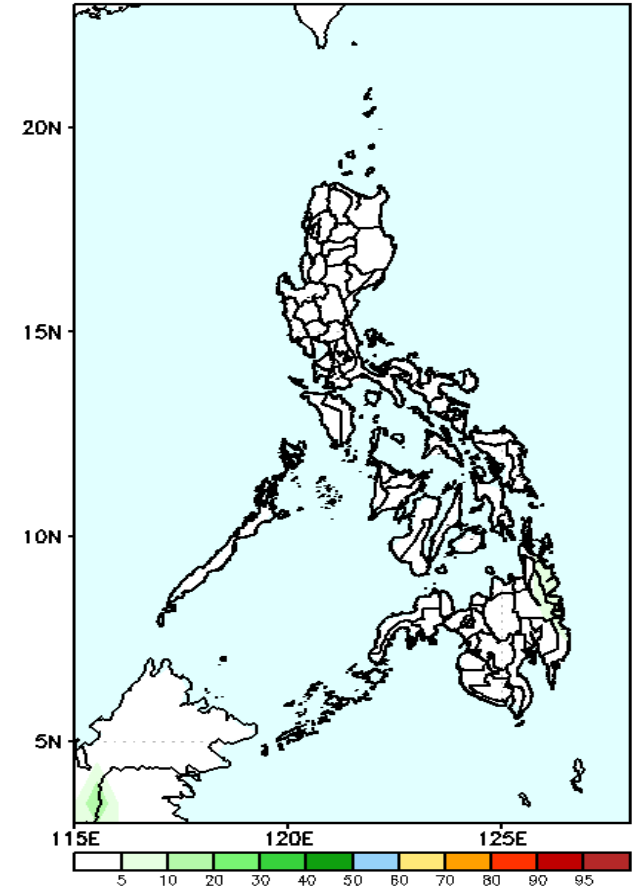
Low probability of rainfall to exceed 100mm in most parts of the country is expected during the forecast period.

GEFS Week-1 Exceedance Prob. > 150mm  
Valid: 20220119 – 20220125



Low probability of rainfall to exceed 150mm in most parts of the country is expected during the forecast period.

GEFS Week-1 Exceedance Prob. > 200mm  
Valid: 20220119 – 20220125

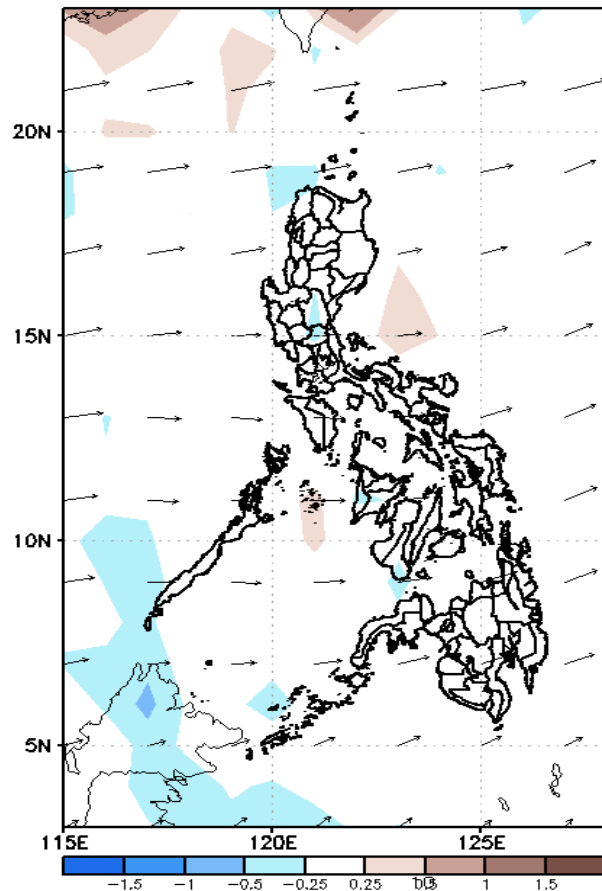


Low probability of rainfall to exceed 200mm in most parts of the country is expected during the forecast period.

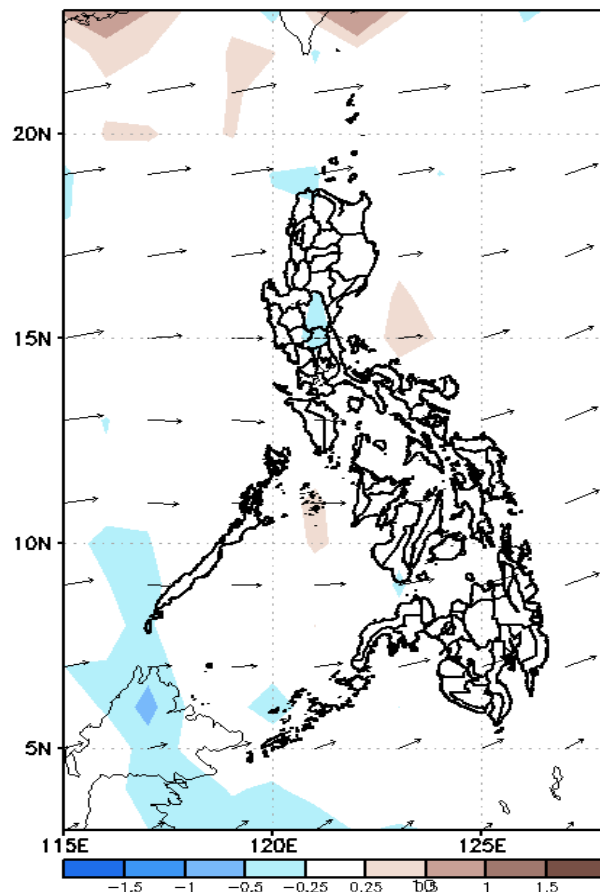
# GEFS Week-2 Forecasts: Divergence & Wind Anomaly

**Week 2: Jan 26- Feb 01, 2022**

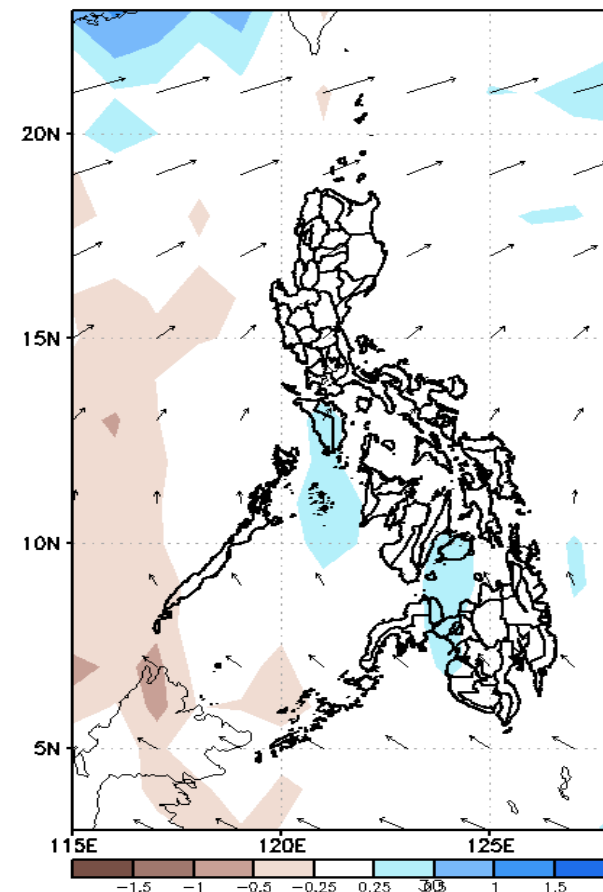
GEFS Week-2 850-hPa Divergence and Wind Anom  
Valid: 20220126 - 20220201



GEFS Week-2 700-hPa Divergence and Wind Anom  
Valid: 20220126 - 20220201



GEFS week-2 200-hPa Divergence and Wind Anom  
Valid: 20220126 - 20220201

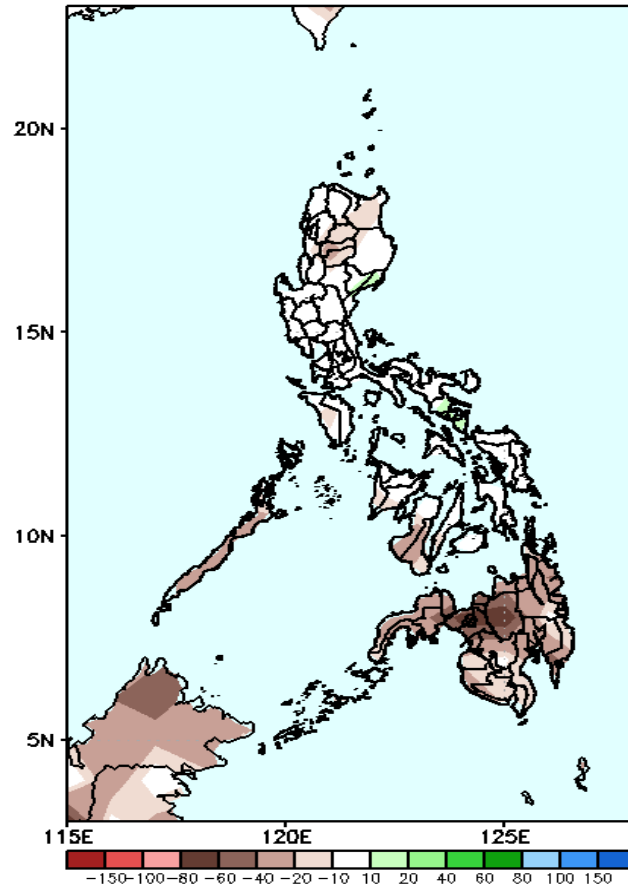


Upper and low level Divergence suggest less likelihood of precipitation in most parts of the country during the forecast period.

# Precipitation Anomaly and Exceedance Probability > 25/50 mm

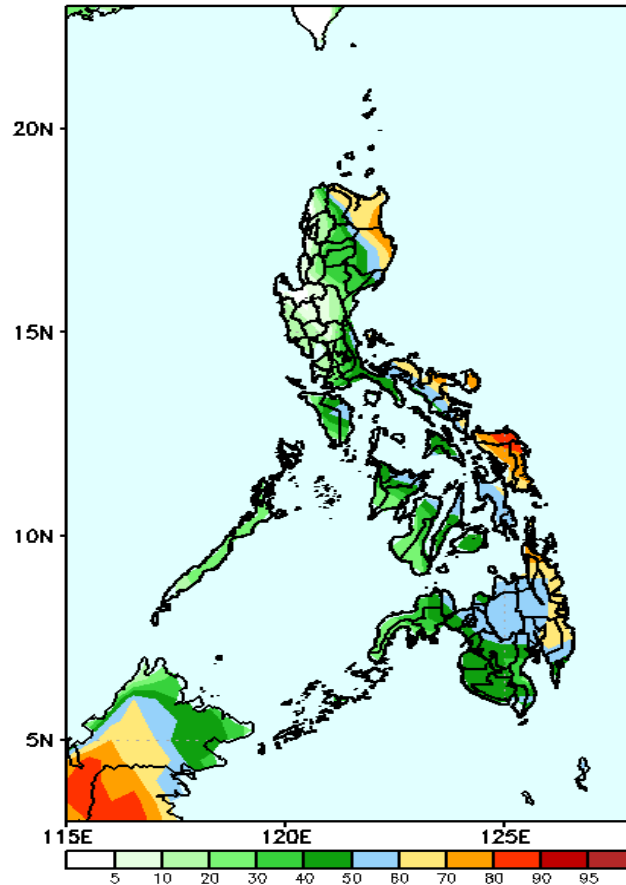
**Week 2: Jan 26- Feb 01, 2022**

GEFS Week-2 Precip Anomaly  
Valid: 20220126 - 20220201



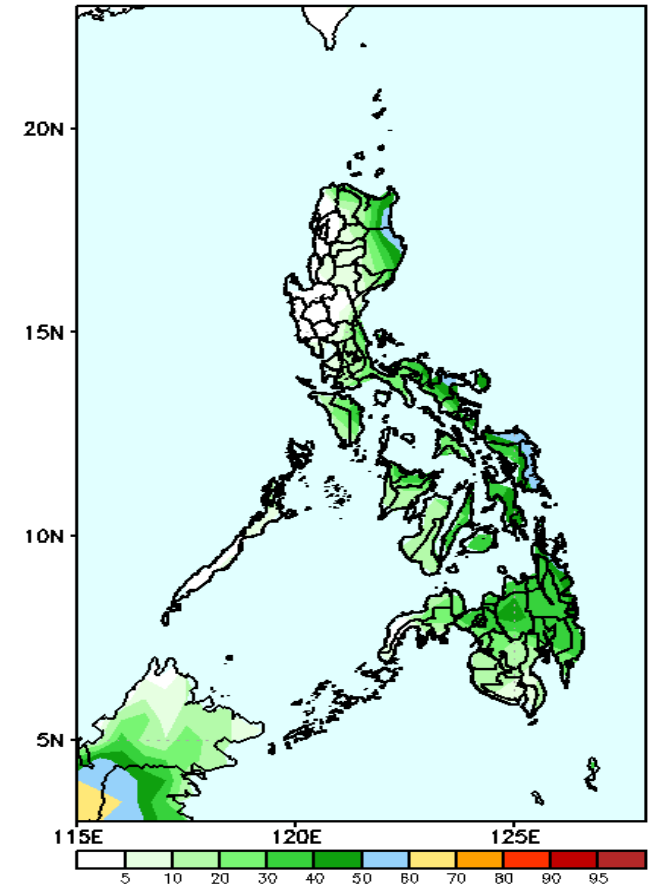
Rainfall deficit of up to 40mm is expected in most parts of Luzon and Visayas and 40-80mm in Mindanao during the forecast period

GEFS Week-2 Exceedance Prob. > 25mm  
Valid: 20220126 - 20220201



60-95% probability of rainfall to exceed 25mm in Cagayan, Isabela, eastern parts of Bicol Region and eastern parts of Visayas & Mindanao while less likely for the rest of the country during the forecast period.

GEFS Week-2 Exceedance Prob. > 50mm  
Valid: 20220126 - 20220201



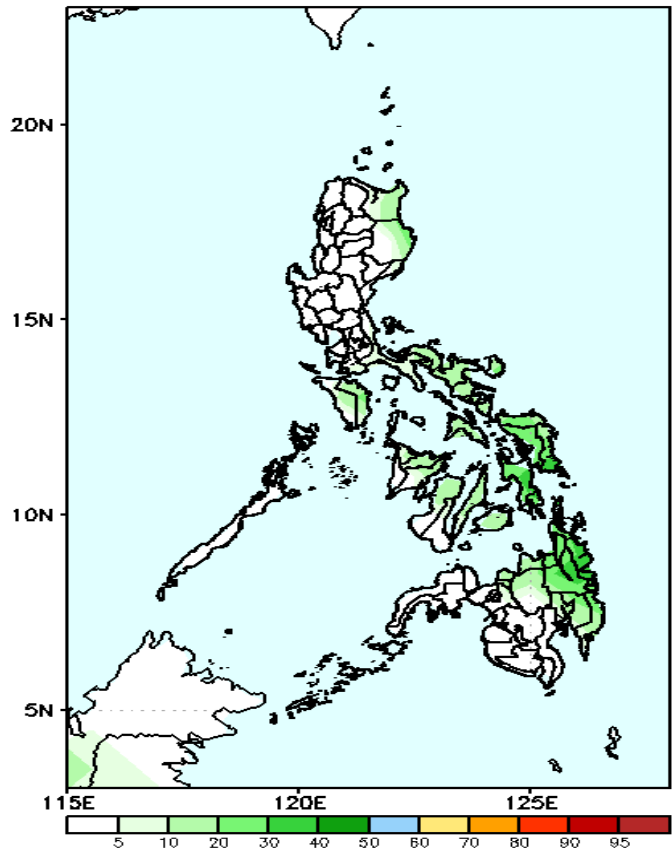
Low probability of rainfall to exceed 50mm in most parts of the country is expected during the forecast period.



# Exceedance Probability > 100/150/200 mm

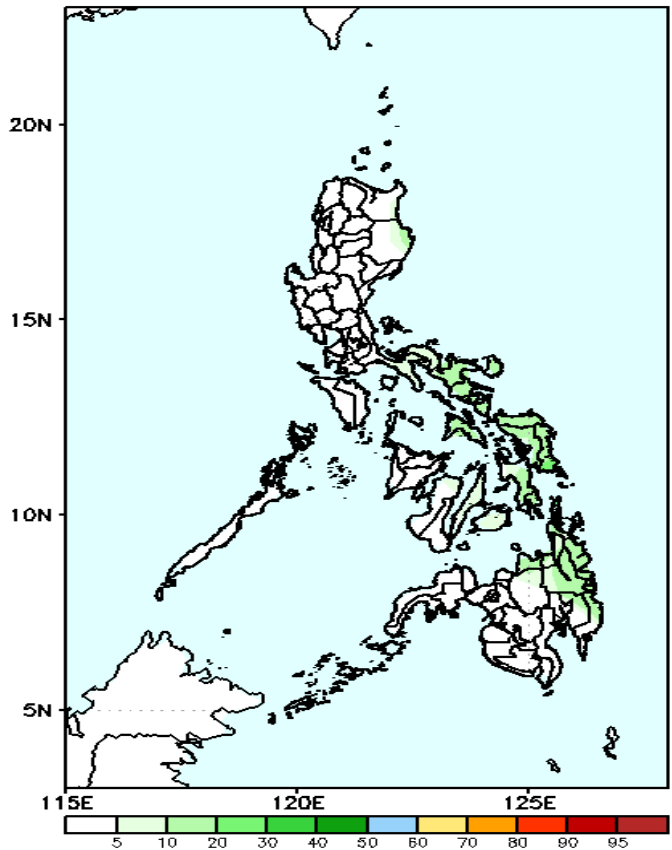
Week 2: Jan 26- Feb 01, 2022

GEFS Week-2 Exceedance Prob. > 100mm  
Valid: 20220126 – 20220201



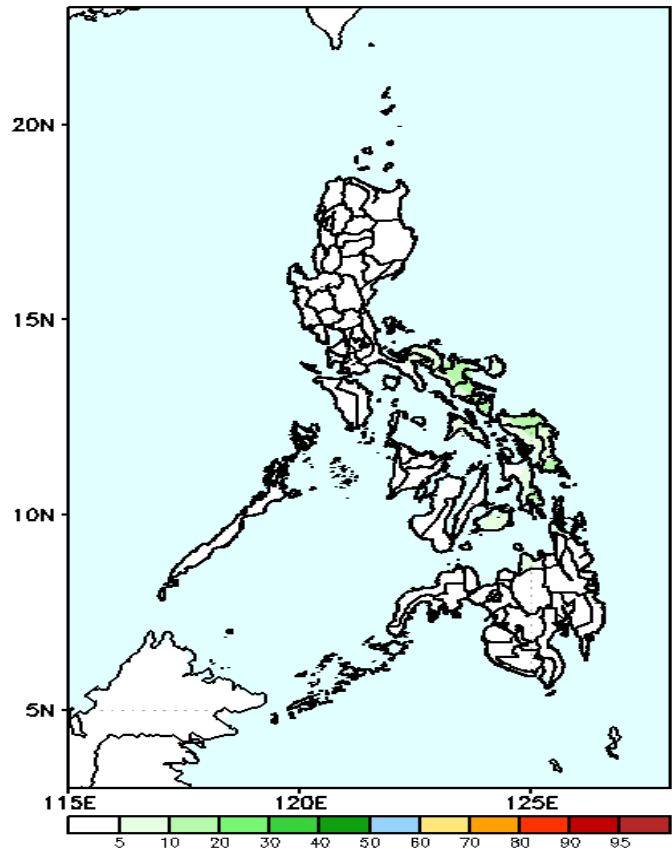
Low probability of rainfall to exceed 100mm in most parts of the country is expected during the forecast period.

GEFS Week-2 Exceedance Prob. > 150mm  
Valid: 20220126 – 20220201



Low probability of rainfall to exceed 150mm in most parts of the country is expected during the forecast period.

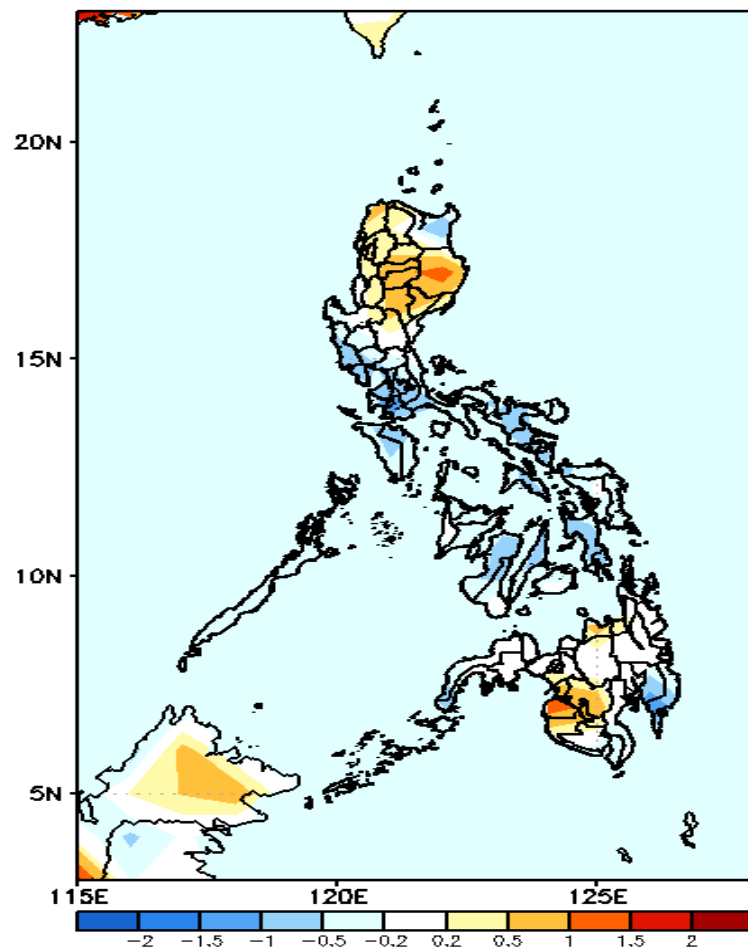
GEFS Week-2 Exceedance Prob. > 200mm  
Valid: 20220126 – 20220201



Low probability of rainfall to exceed 200mm in most parts of the country is expected during the forecast period.

# GEFS Week-1 & 2 Forecasts: T2m Anomaly

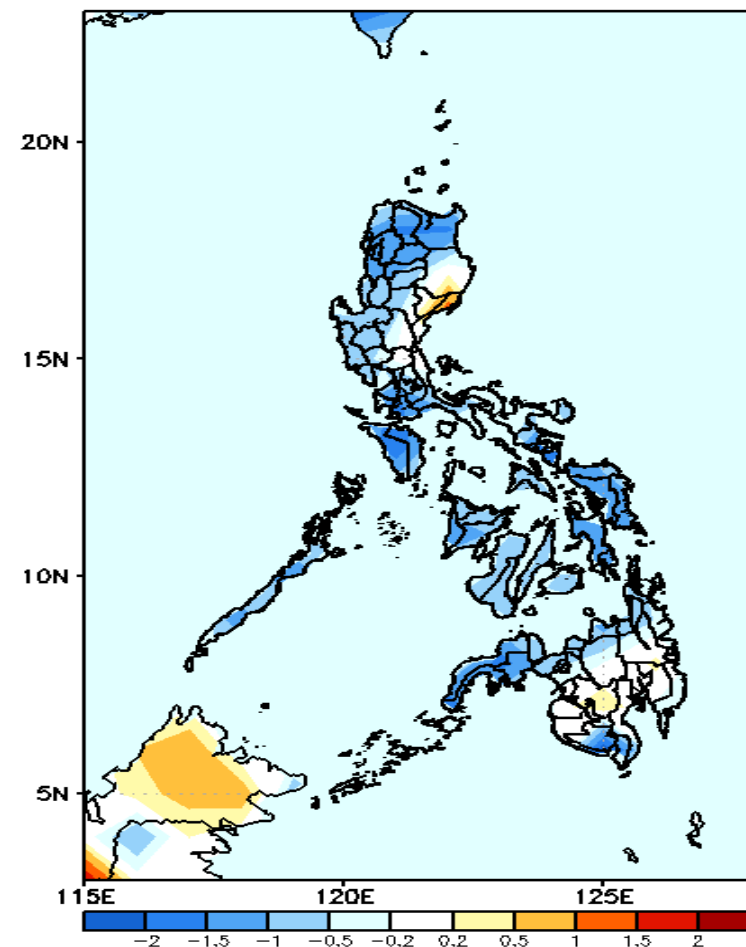
GEFS Week-1 T2m Anomaly  
Valid: 20220119 - 20220125



## 2m Temperature Week 1: Jan 19-25, 2022

Slightly cooler than average surface air temperature will likely experience in Cagayan, most parts of Southern Luzon & Visayas and Davao Region while slightly warmer to warmer temperature in the remaining parts of Luzon, Maguindanao & North Cotabato during the forecast period.

GEFS Week-2 T2m Anomaly  
Valid: 20220126 - 20220201



## 2m Temperature Week 2: Jan 26- Feb 01, 2022

Slightly cooler to cooler than average surface air temperature will likely experience in most parts of the country except in Baler during the forecast period.

