



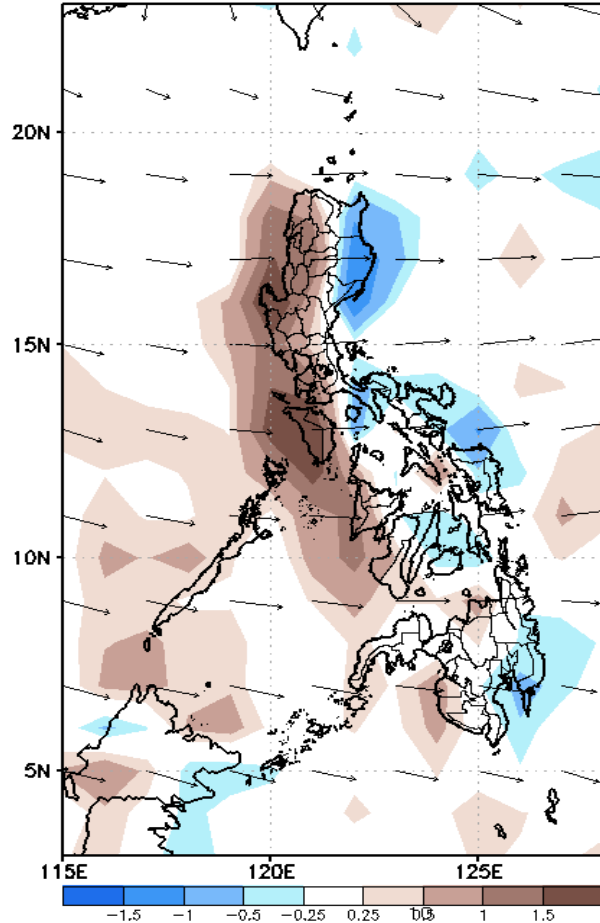
Week 1 & Week 2 Forecast for the Philippines using GEFS Model



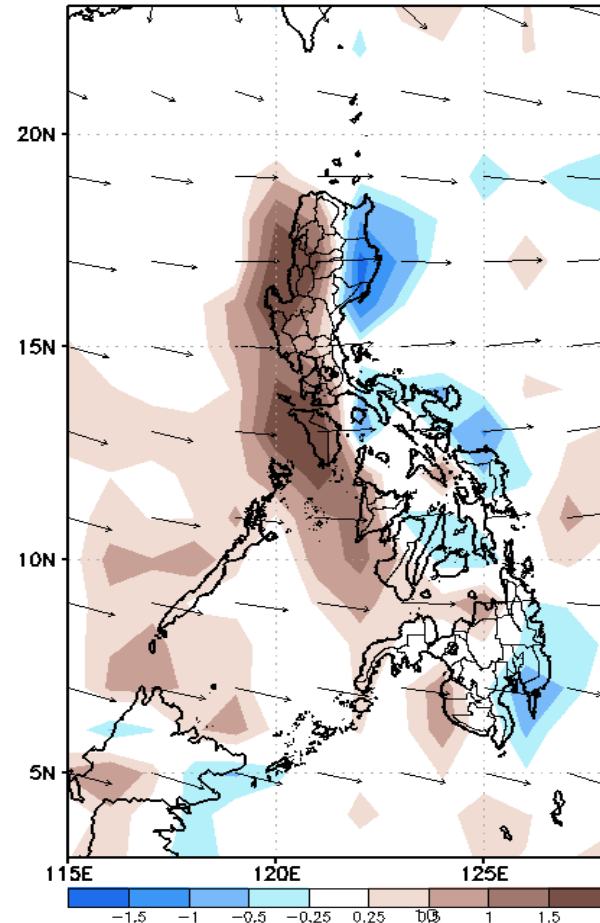
GEFS Week-1 Forecasts: Divergence & Wind Anomaly

Week 1: July 19-25 2021

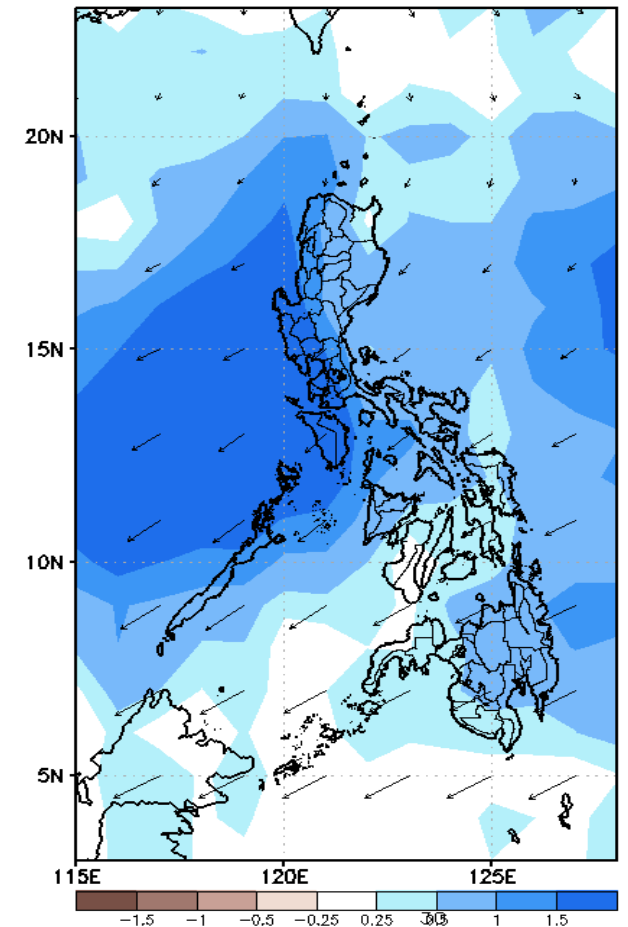
GEFS Week-1 850-hPa Divergence and Wind Anoma
Valid: 20210719 - 20210725



GEFS Week-1 700-hPa Divergence and Wind Anoma
Valid: 20210719 - 20210725



GEFS Week-1 200-hPa Divergence and Wind Anom
Valid: 20210719 - 20210725

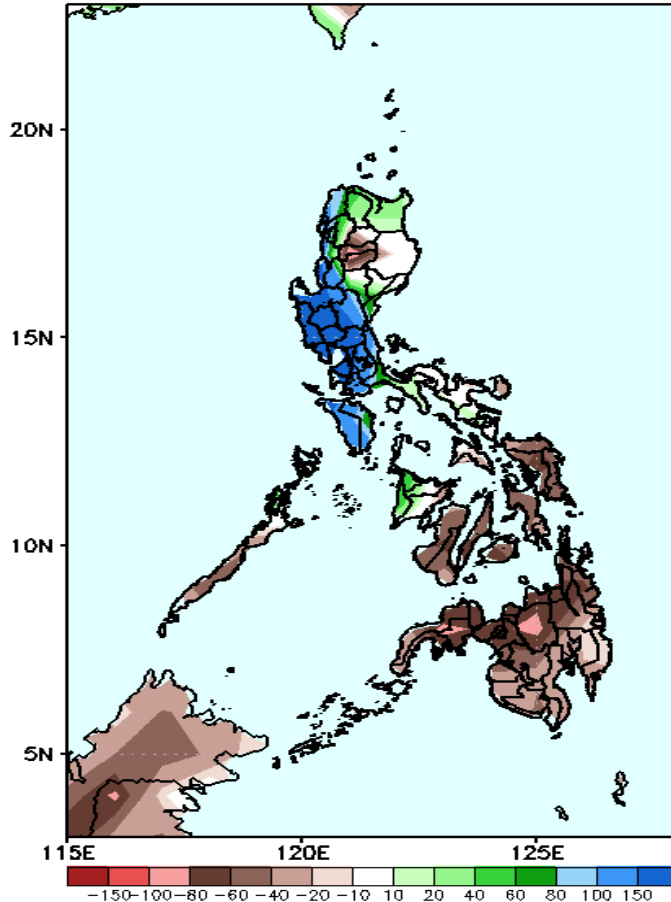


Upper and low level Divergence suggest likelihood of precipitation in most parts of the country. Enhance Southwest monsoon affecting most parts of the country that will bring rains especially in the western section of the country during the forecast period.

Precipitation Anomaly and Exceedance Probability > 25/50 mm

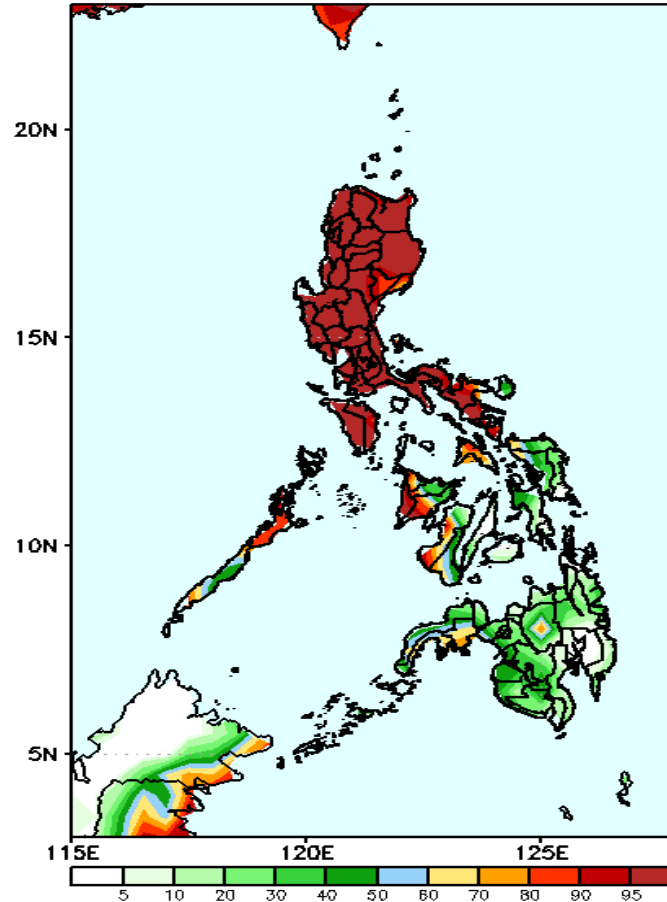
Week 1: July 19-25 2021

GEFS Week-1 Precip Anomaly
Valid: 20210719 - 20210725



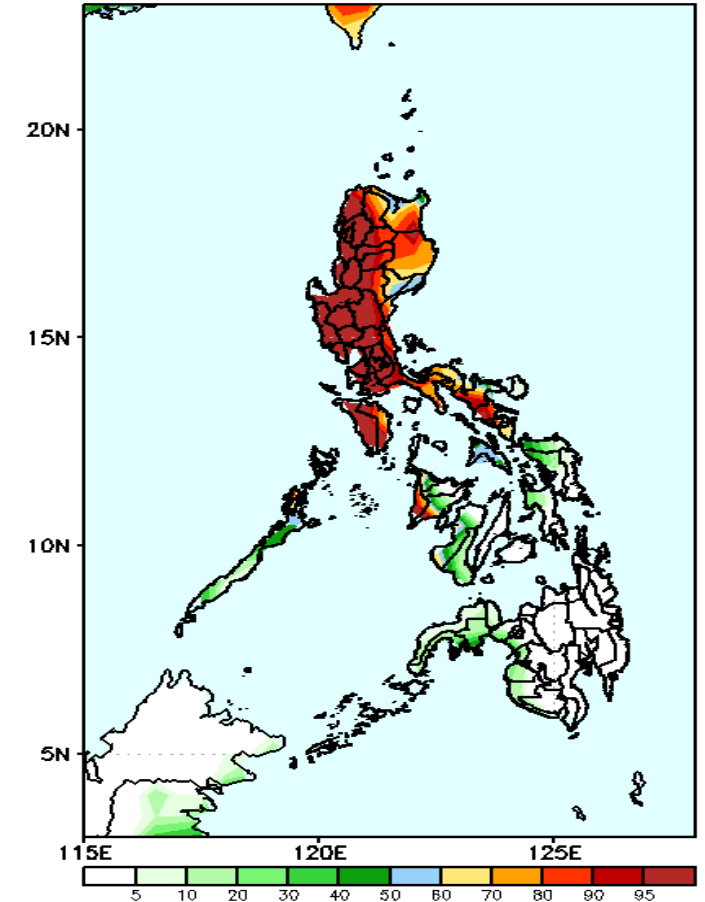
Increase of rainfall of up to 150mm is expected in the western section of Luzon while 40-80mm rainfall deficit in Kalinga, Mt. Province, Ifugao and in most parts of Visayas & Mindanao during the forecast period.

GEFS Week-1 Exceedance Prob. > 25mm
Valid: 20210719 - 20210725



High probability of rainfall to exceed 25mm in most parts of Luzon, Antique, Iloilo and Negros Occidental while less likely for the rest of the country during the forecast period.

GEFS Week-1 Exceedance Prob. > 50mm
Valid: 20210719 - 20210725



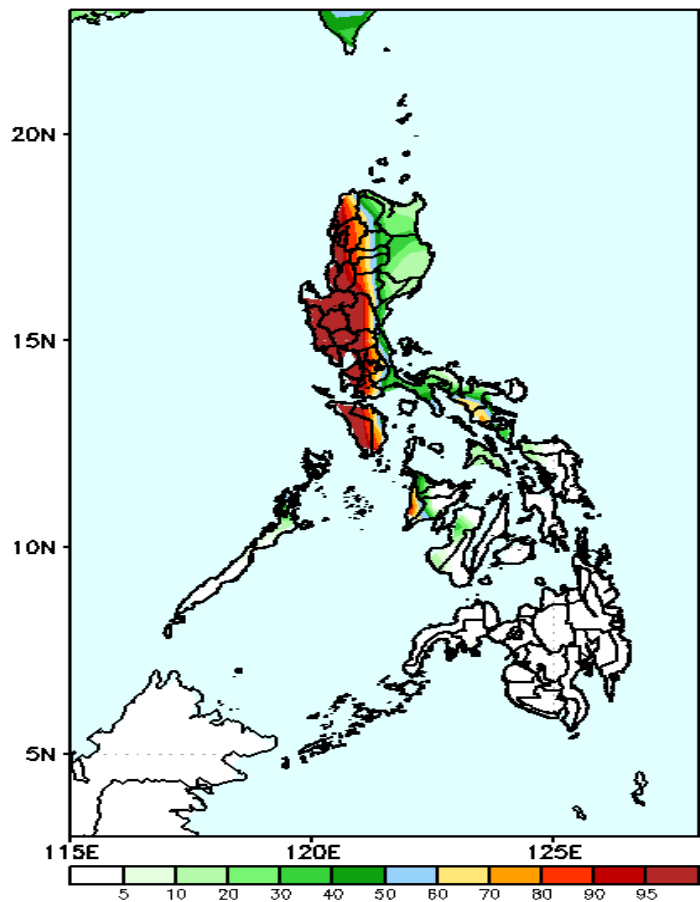
High probability of rainfall to exceed 50mm in most parts of Luzon while less likely in Visayas and Mindanao during the forecast period.



Exceedance Probability > 100/150/200 mm

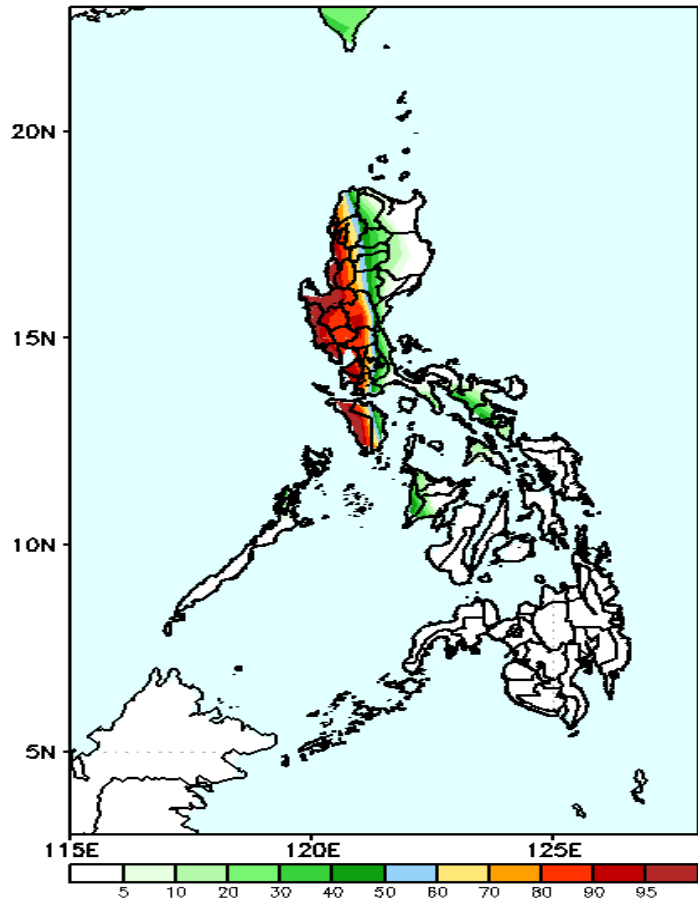
Week 1: July 19-25 2021

GEFS Week-1 Exceedance Prob. > 100mm
Valid: 20210719 – 20210725



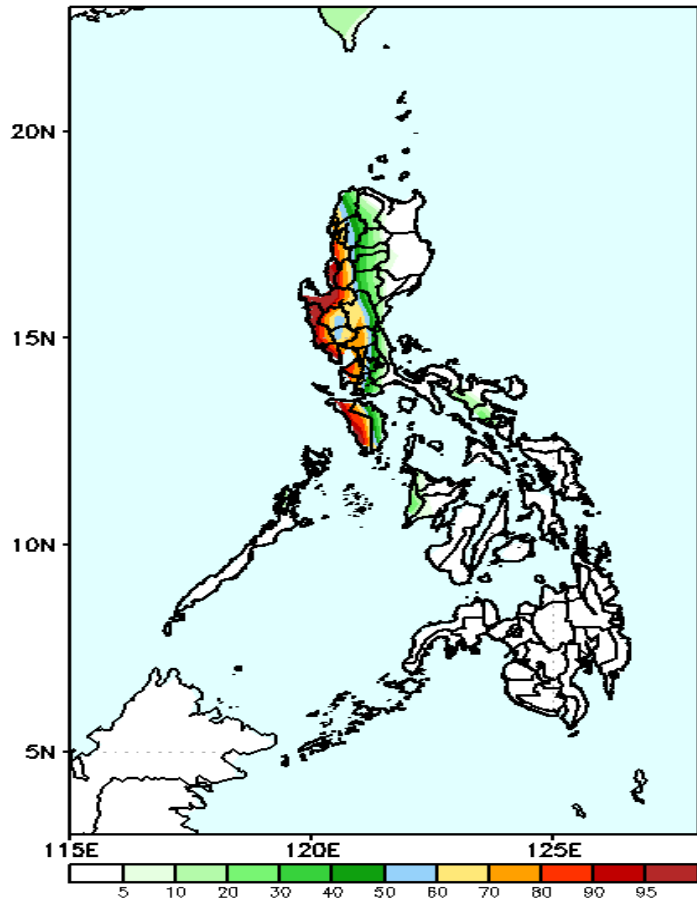
High probability of rainfall to exceed 100mm in the western section of Luzon while less likely for the rest of the country during the forecast period.

GEFS Week-1 Exceedance Prob. > 150mm
Valid: 20210719 – 20210725



High probability of rainfall to exceed 150mm in the western section of Luzon while less likely for the rest of the country during the forecast period.

GEFS Week-1 Exceedance Prob. > 200mm
Valid: 20210719 – 20210725



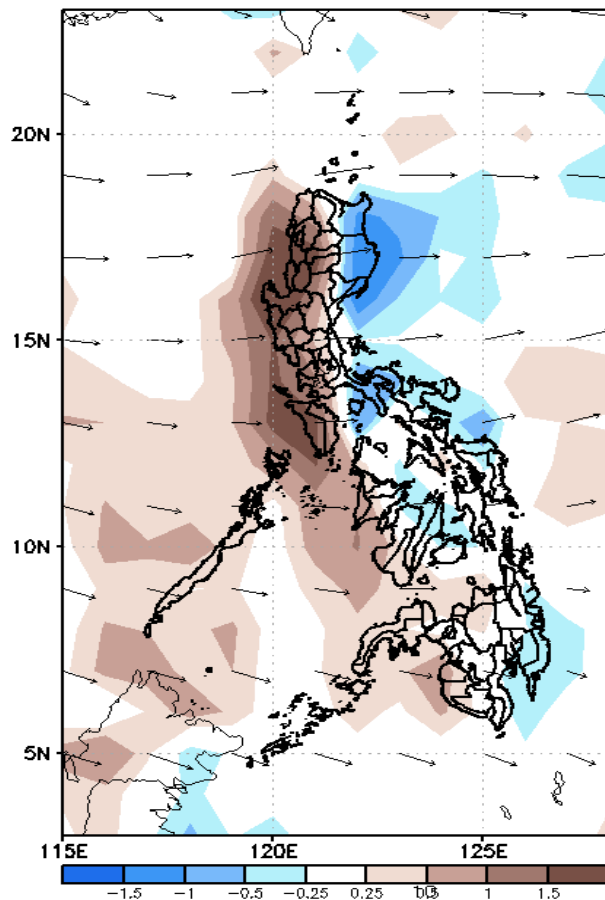
High probability of rainfall to exceed 200mm in the western section of Luzon while less likely for the rest of the country during the forecast period.



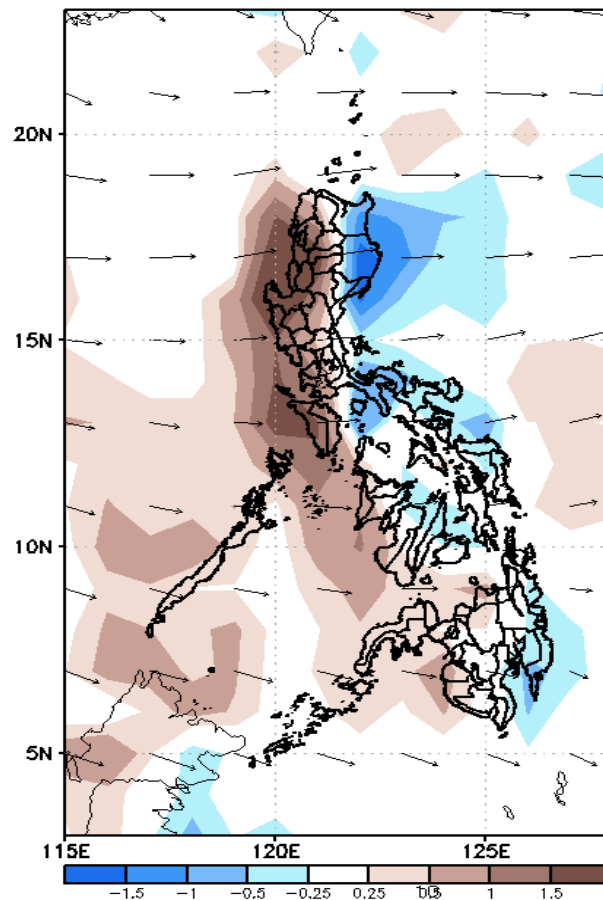
GEFS Week-2 Forecasts: Divergence & Wind Anomaly

Week 2: July 26- Aug 01, 2021

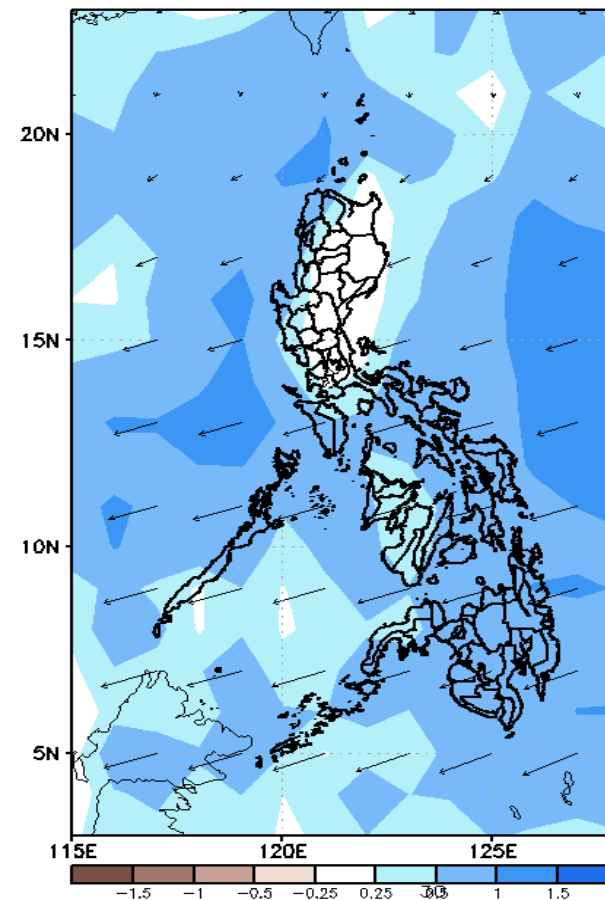
GEFS Week-2 850-hPa Divergence and Wind Anom
Valid: 20210726 - 20210801



GEFS Week-2 700-hPa Divergence and Wind Anom
Valid: 20210726 - 20210801



GEFS week-2 200-hPa Divergence and Wind Anom
Valid: 20210726 - 20210801

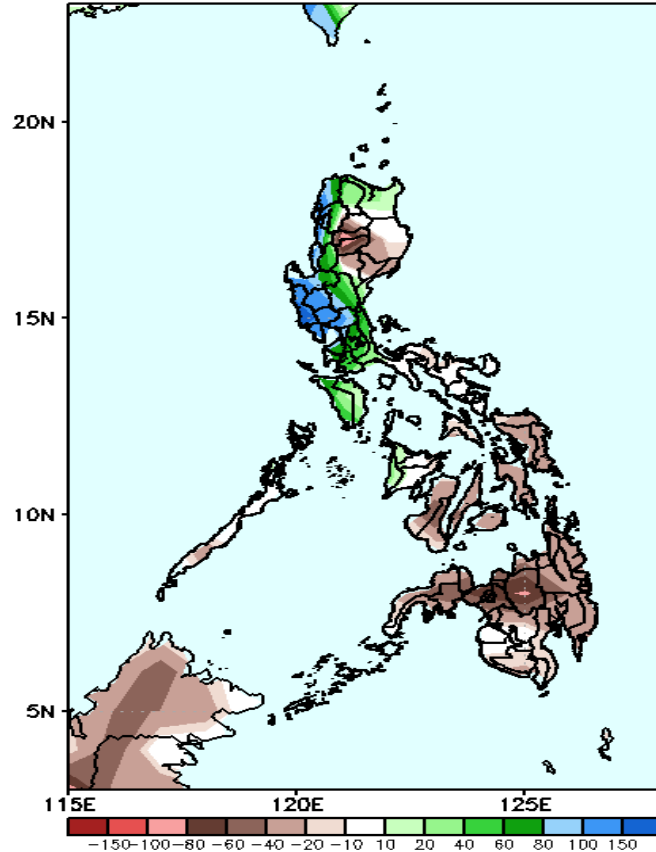


Upper and low level Divergence suggest likelihood of precipitation in most parts of the country except Cagayan Valley region and eastern part of Central Luzon. Southwest monsoon affecting the western sections of Luzon and Visayas while the rest of the country. Attributing to warmer temperature with humid environment (especially in the western section of the country) during the forecast period.

Precipitation Anomaly and Exceedance Probability > 25/50 mm

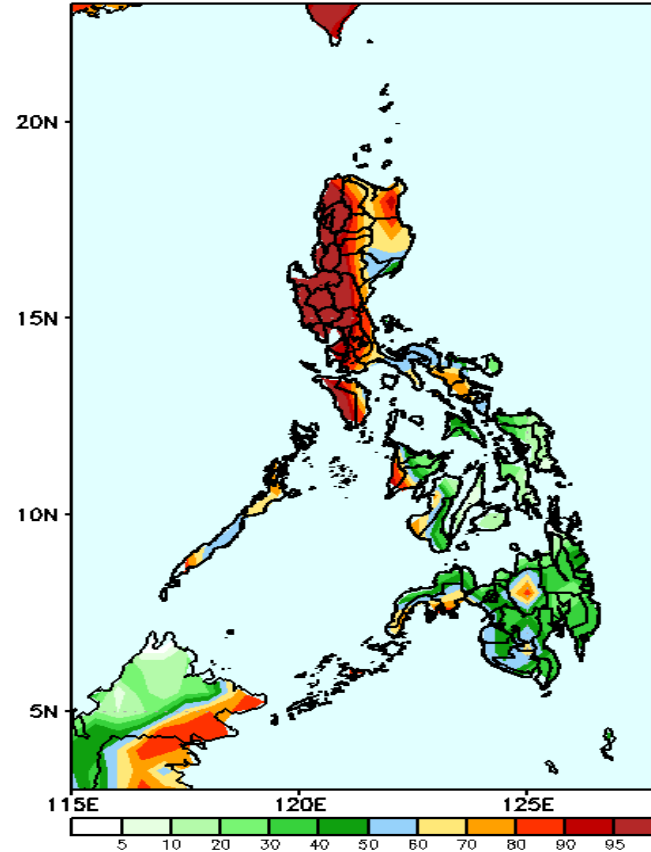
Week 2: July 26- Aug 01, 2021

GEFS Week-2 Precip Anomaly
Valid: 20210726 - 20210801



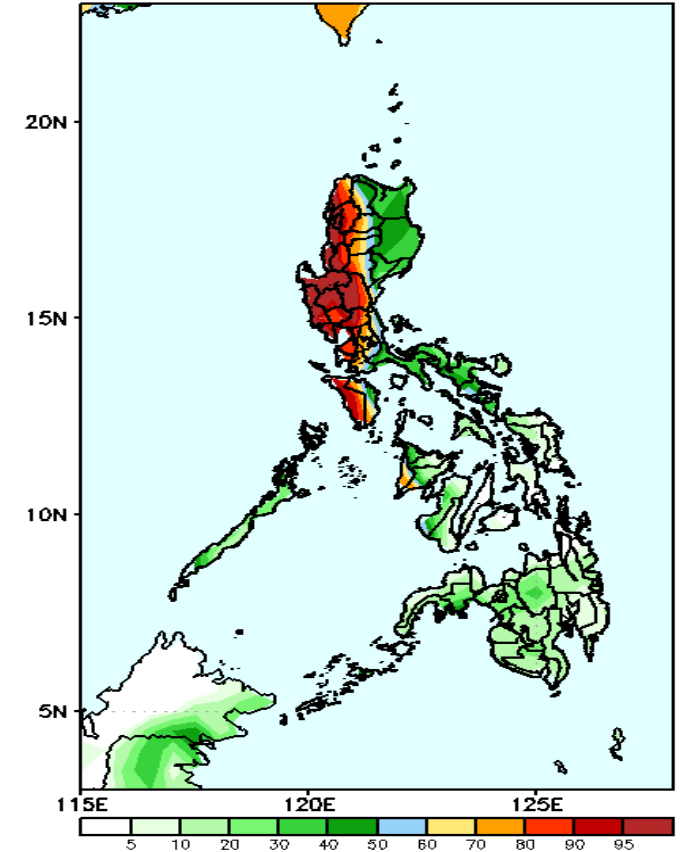
Increase of rainfall of up to 150mm is expected in the western section of Luzon while 40-80mm rainfall deficit in Kalinga, Mt. Province, Ifugao and in most parts of Visayas & Mindanao during the forecast period.

GEFS Week-2 Exceedance Prob. > 25mm
Valid: 20210726 - 20210801



High probability of rainfall to exceed 25mm in most parts of Luzon, Antique, Iloilo and Bukidnon while less likely for the rest of the country during the forecast period.

GEFS Week-2 Exceedance Prob. > 50mm
Valid: 20210726 - 20210801



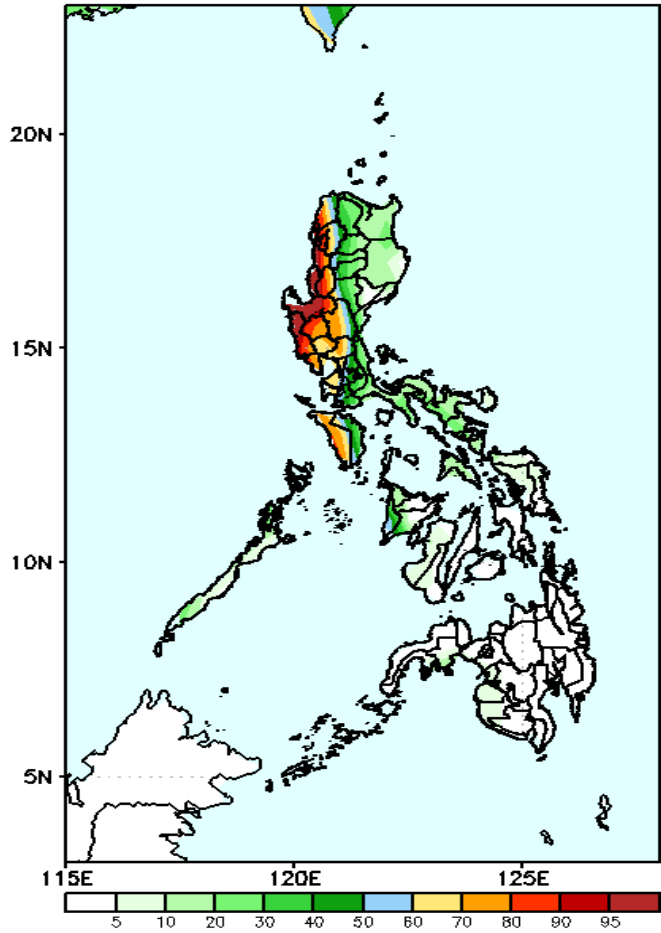
High probability of rainfall to exceed 50mm in the western section of Luzon while less likely for the rest of the country during the forecast period.



Exceedance Probability > 100/150/200 mm

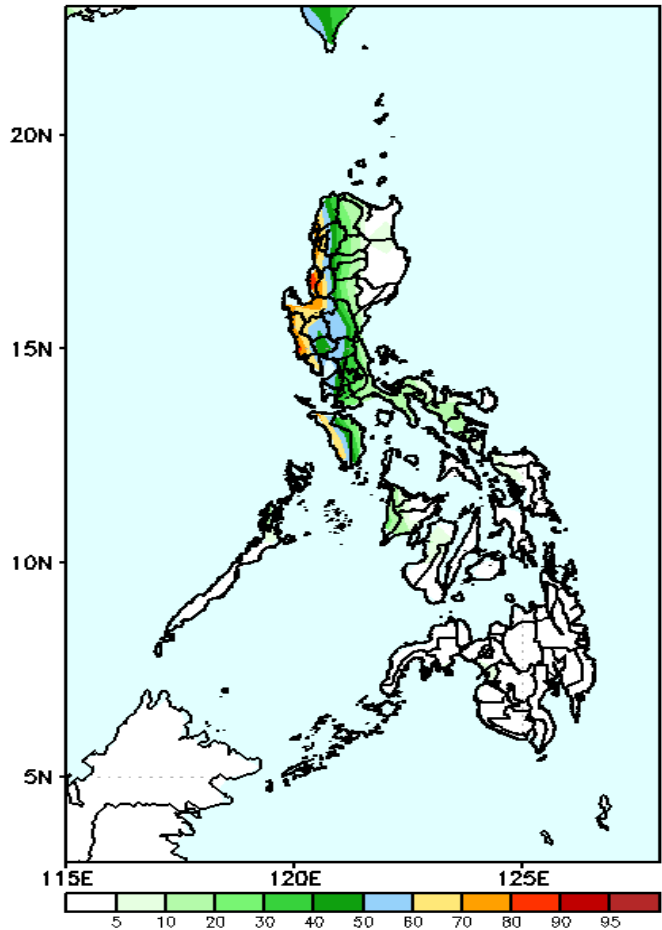
Week 2: July 26- Aug 01, 2021

GEFS Week-2 Exceedance Prob. > 100mm
Valid: 20210726 – 20210801



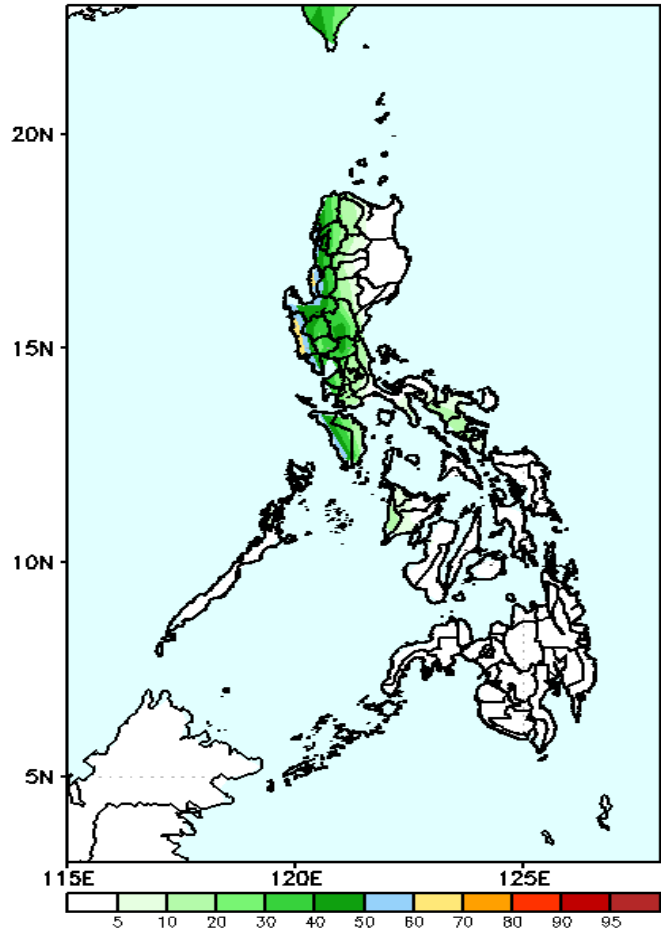
High probability of rainfall to exceed 100mm in western Luzon while less likely for the rest of the country during the forecast period.

GEFS Week-2 Exceedance Prob. > 150mm
Valid: 20210726 – 20210801



Less probability of rainfall to exceed 150mm in most parts of the country except in most parts of Region 1 and Occidental Mindoro where there is 60-90% probability during the forecast period.

GEFS Week-2 Exceedance Prob. > 200mm
Valid: 20210726 – 20210801

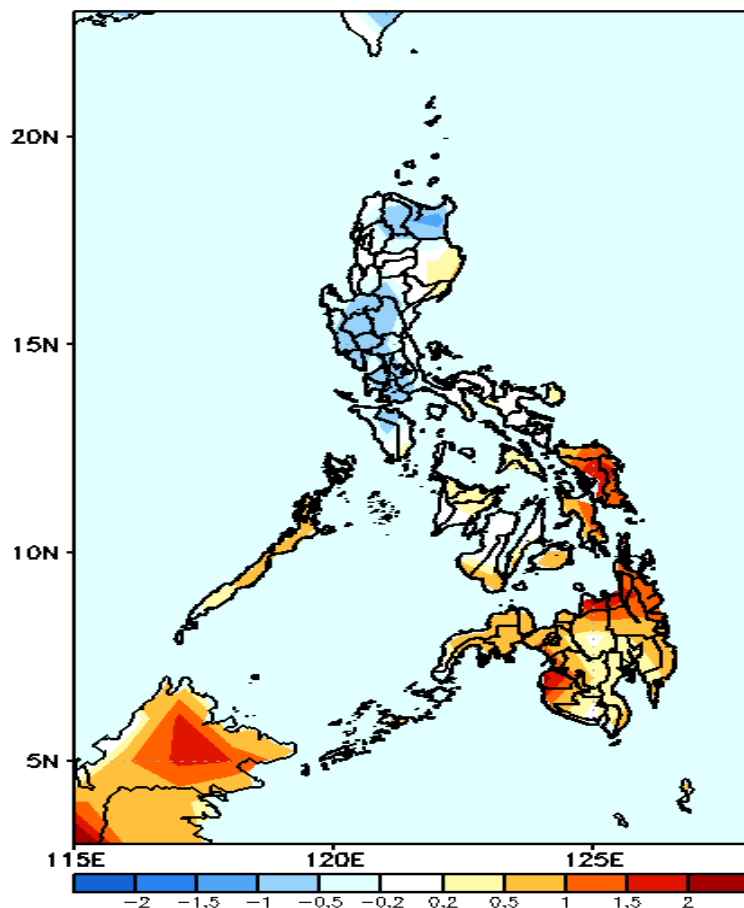


Less probability of rainfall to exceed 200mm in most parts of the country during the forecast period.



GEFS Week-1 & 2 Forecasts: T2m Anomaly

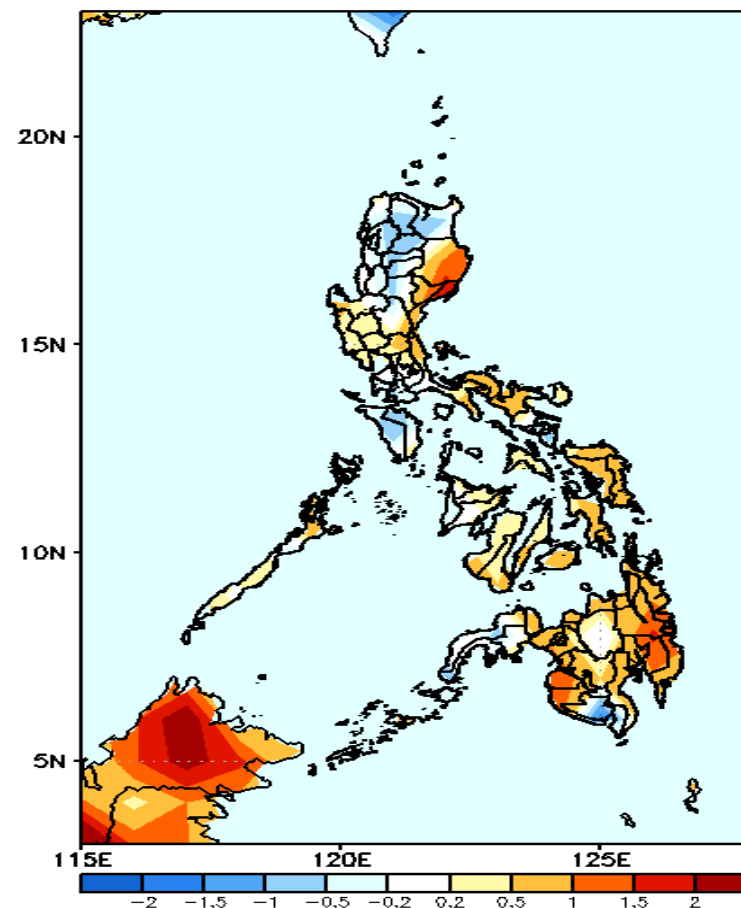
GEFS Week-1 T2m Anomaly
Valid: 20210719 - 20210725



2m Temperature Week 1: July 19-25 2021

Slightly warmer to warmer than average surface air temperature will likely experience in most parts of Visayas and Mindanao while average to slightly cooler than average surface air temperature in Luzon during the forecast period.

GEFS Week-2 T2m Anomaly
Valid: 20210726 - 20210801



2m Temperature Week 2: July 26- Aug 01, 2021

Slightly warmer to warmer than average surface air temperature will likely experience in most parts of the country except in Cordillera Region, Mindoro and Sarangani where average to slightly cooler temperature is expected during the forecast period.

