



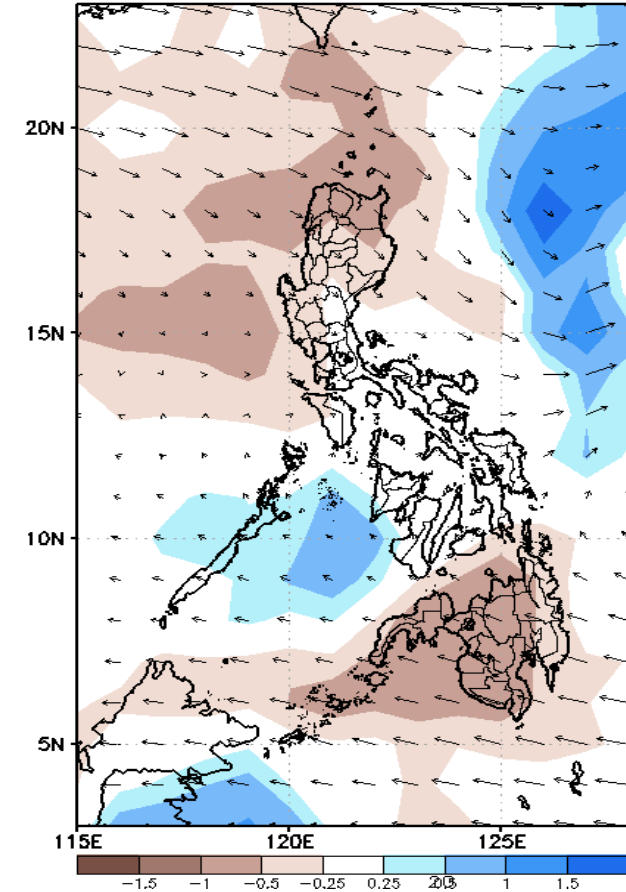
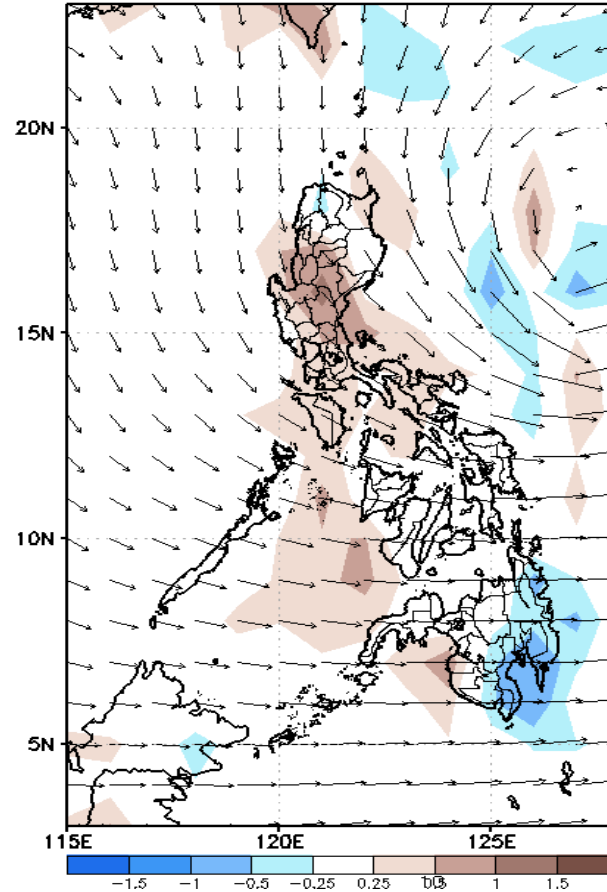
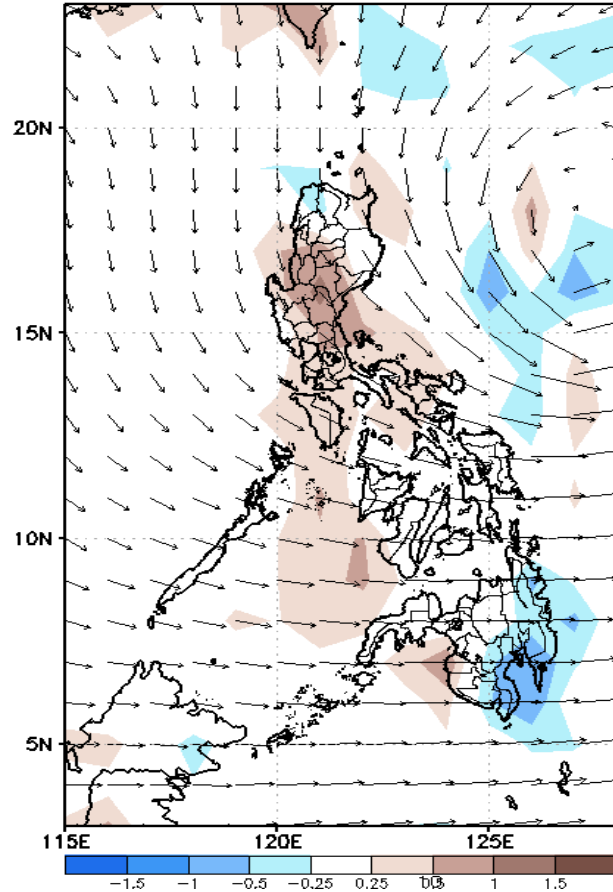
Week 1 & Week 2 Forecast for the Philippines using GEFS Model



GEFS Week-1 Forecasts: Divergence & Wind Anomaly

Week 1: April 19-25, 2021

GEFS Week-1 850-hPa Divergence and Wind Anom
Valid: 20210419 - 20210425

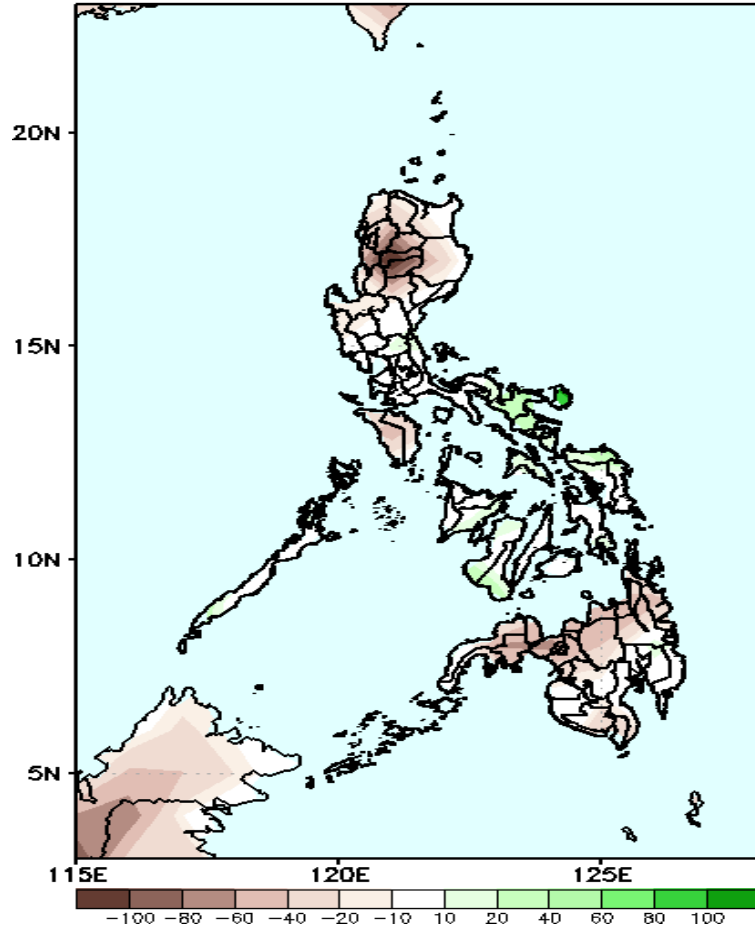


Upper and low level Divergence suggest high likelihood of precipitation in most parts CARAGA and Davao region. Easterlies affecting most parts of the country attributing to warmer temperature during the forecast period.

Precipitation Anomaly and Exceedance Probability > 25/50 mm

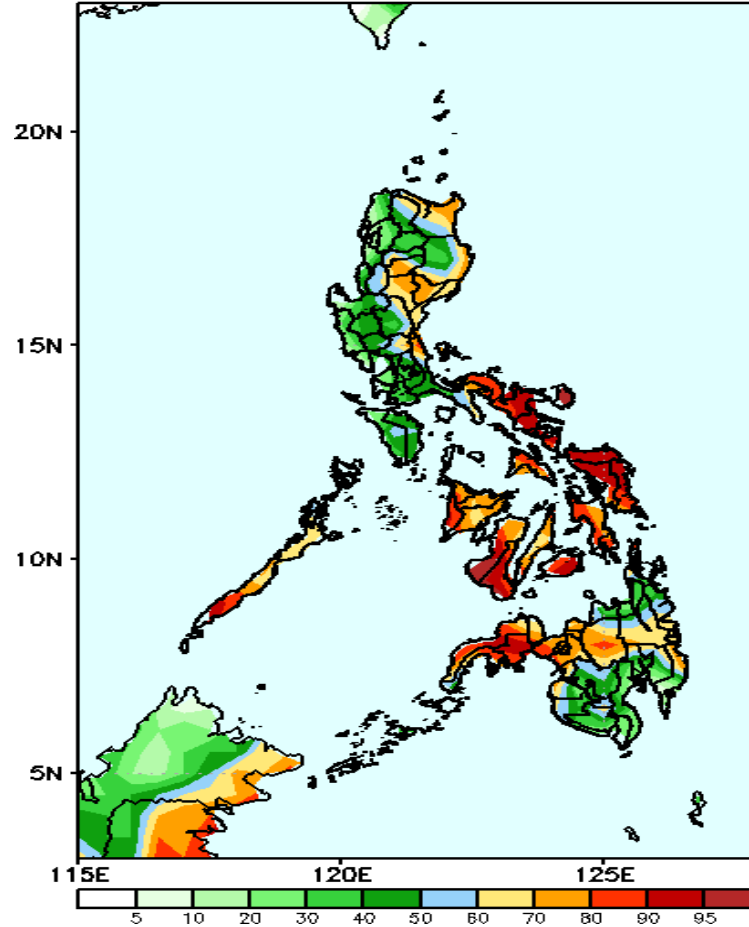
Week 1: April 19-25, 2021

GEFS Week-1 Precip Anomaly
Valid: 20210419 - 20210425



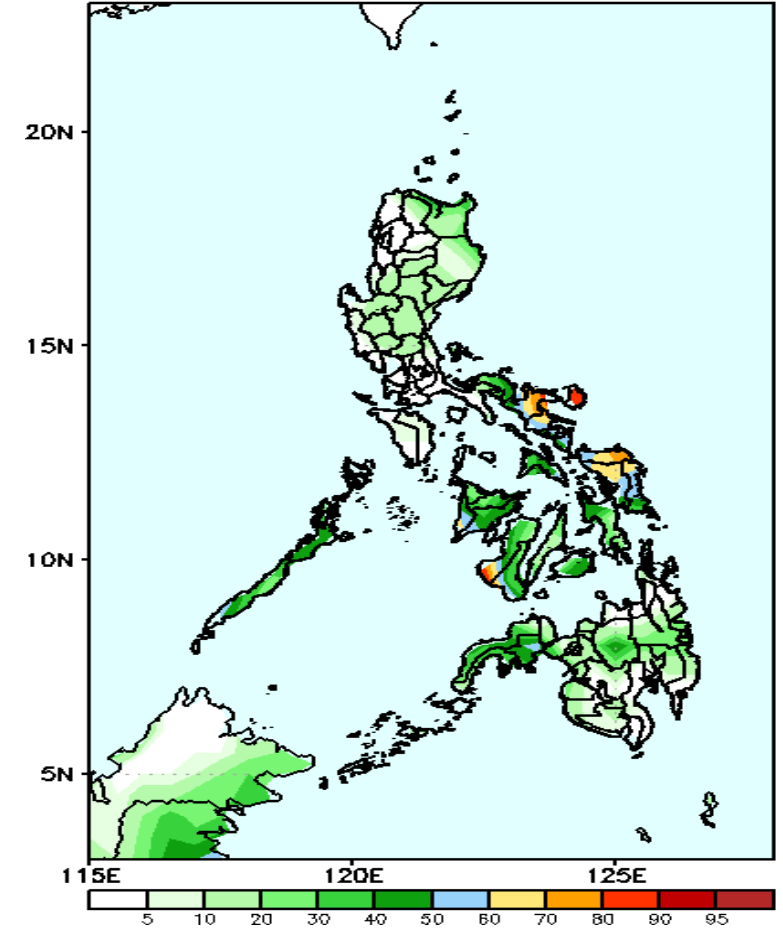
Rainfall deficit of up to 40-100mm is expected in northern half of Luzon and most parts of Mindanao while increase of 40-80mm in Bicol region, Northern Samar and Negros Island during the forecast period.

GEFS Week-1 Exceedance Prob. > 25mm
Valid: 20210419 - 20210425



High probability of rainfall to exceed 25mm in some areas in eastern Luzon, Palawan, most parts of Visayas, Northern Mindanao, Zamboanga Peninsula, Agusan del Sur and Davao Oriental while less likely for the rest of the country during the forecast period.

GEFS Week-1 Exceedance Prob. > 50mm
Valid: 20210419 - 20210425

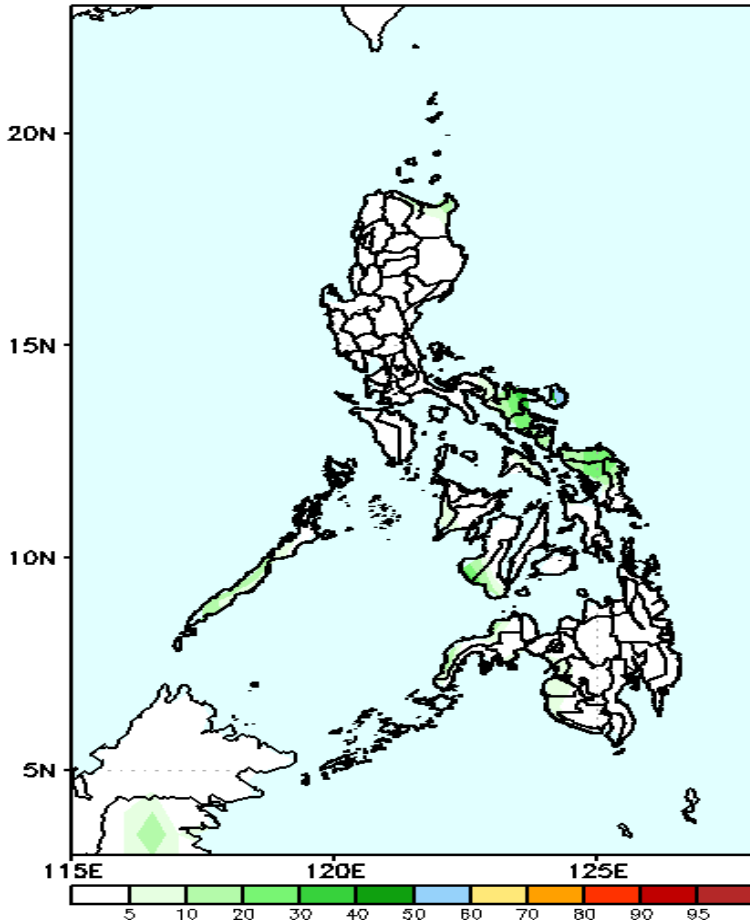


70-90% probability of rainfall to exceed 50mm in Catanduanes, Camarines Sur, Northern Samar and southern part of Negros Occidental while less likely for the rest of the country during the forecast period.

Exceedance Probability > 100/150/200 mm

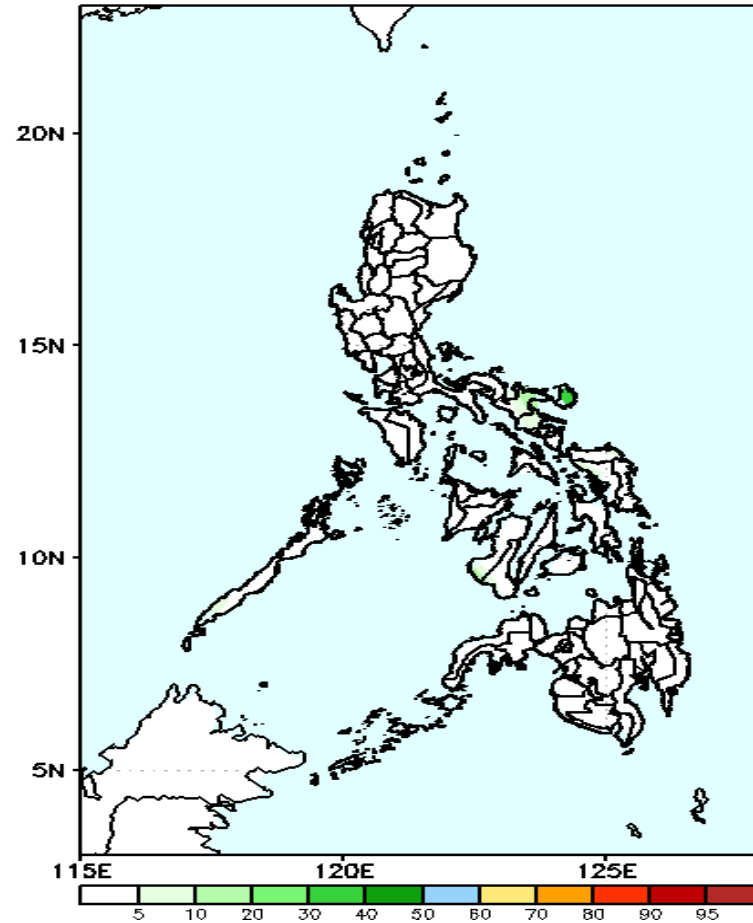
Week 1: April 19-25, 2021

GEFS Week-1 Exceedance Prob. > 100mm
Valid: 20210419 - 20210425



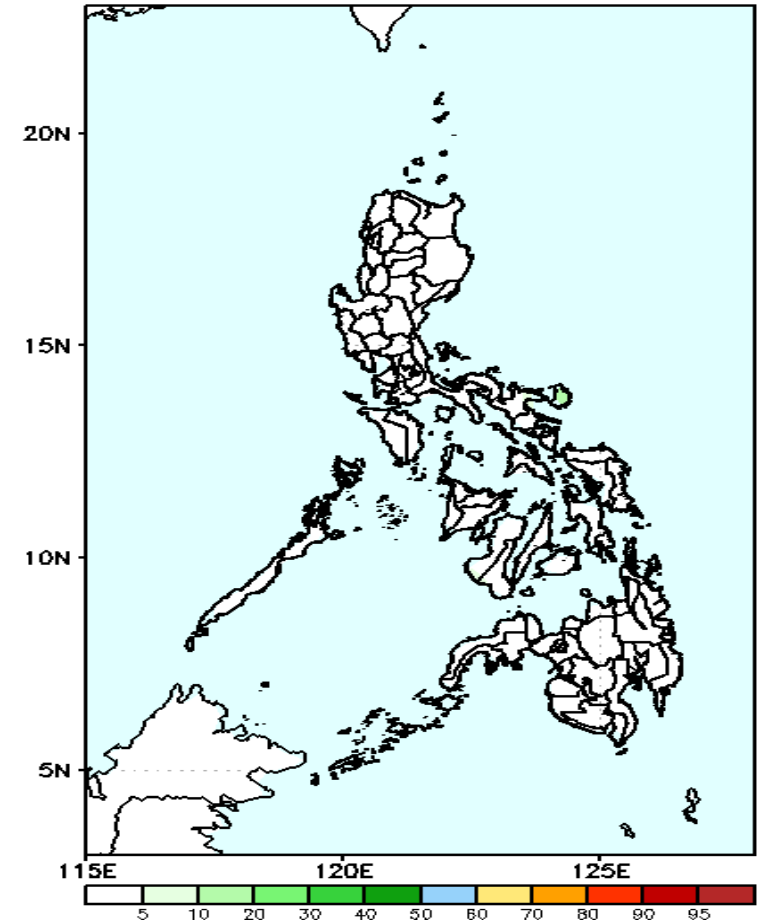
Less probability of rainfall to exceed 100mm in most parts of the country during the forecast period.

GEFS Week-1 Exceedance Prob. > 150mm
Valid: 20210419 - 20210425



Less probability of rainfall to exceed 150mm in most parts of the country during the forecast period.

GEFS Week-1 Exceedance Prob. > 200mm
Valid: 20210419 - 20210425

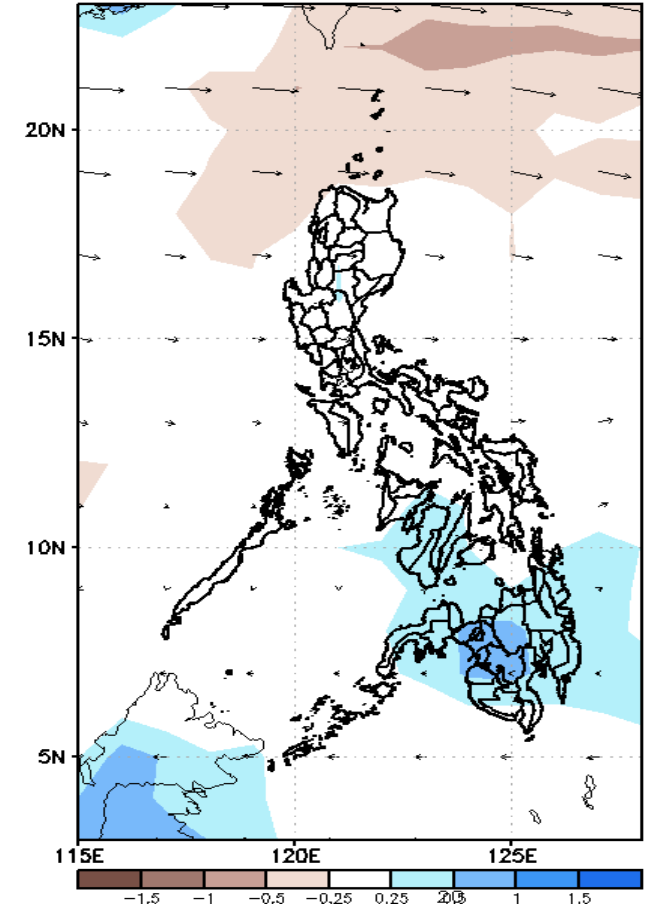
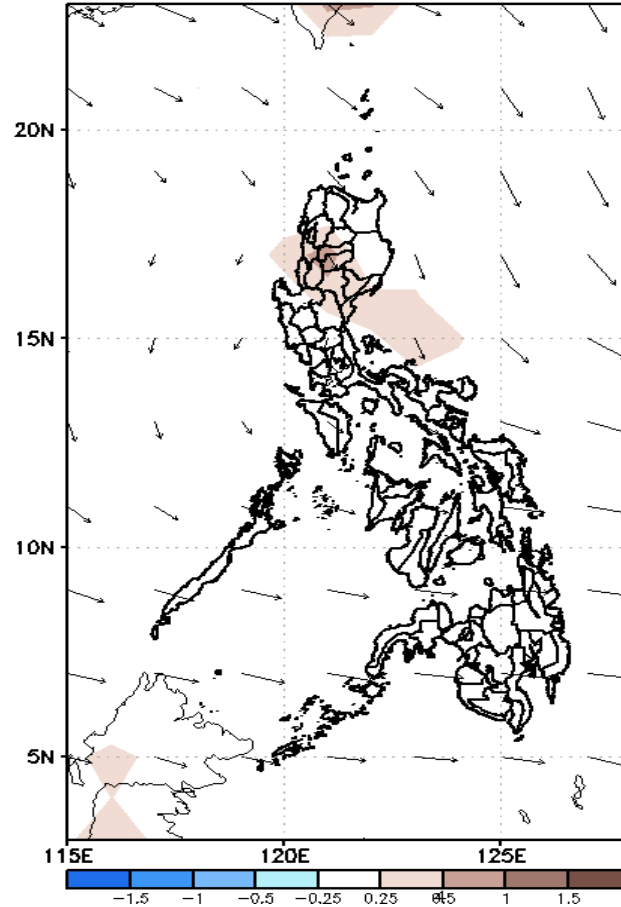
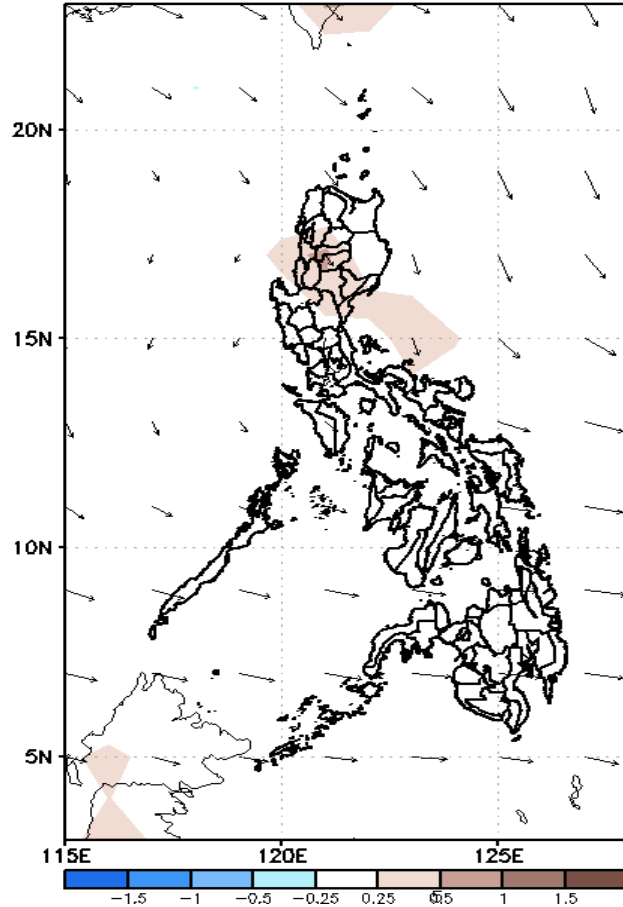


Less probability of rainfall to exceed 200mm in most parts of the country during the forecast period.

GEFS Week-2 Forecasts: Divergence & Wind Anomaly

Week 2: Apr 26 – May 02, 2021

GEFS Week-2 850-hPa Divergence and Wind Anom
Valid: 20210426 – 20210502

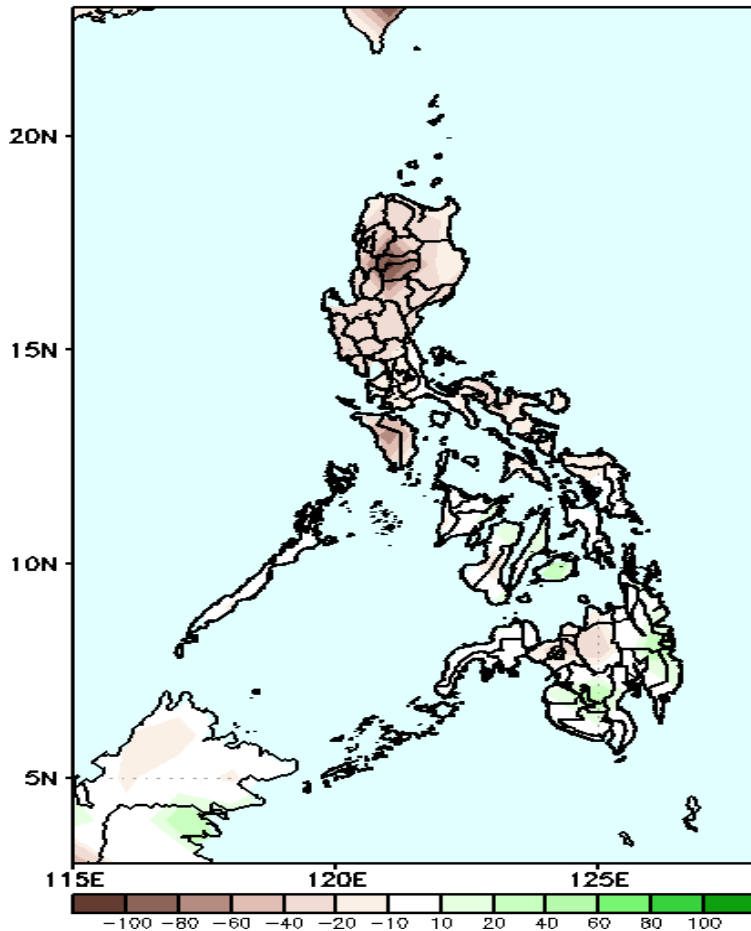


Upper and low level Divergence suggest high likelihood of Negros Provinces, Cebu and most parts of Mindanao. Easterlies affecting most parts of the country attributing to warmer temperatures during the forecast period.

Precipitation Anomaly and Exceedance Probability > 25/50 mm

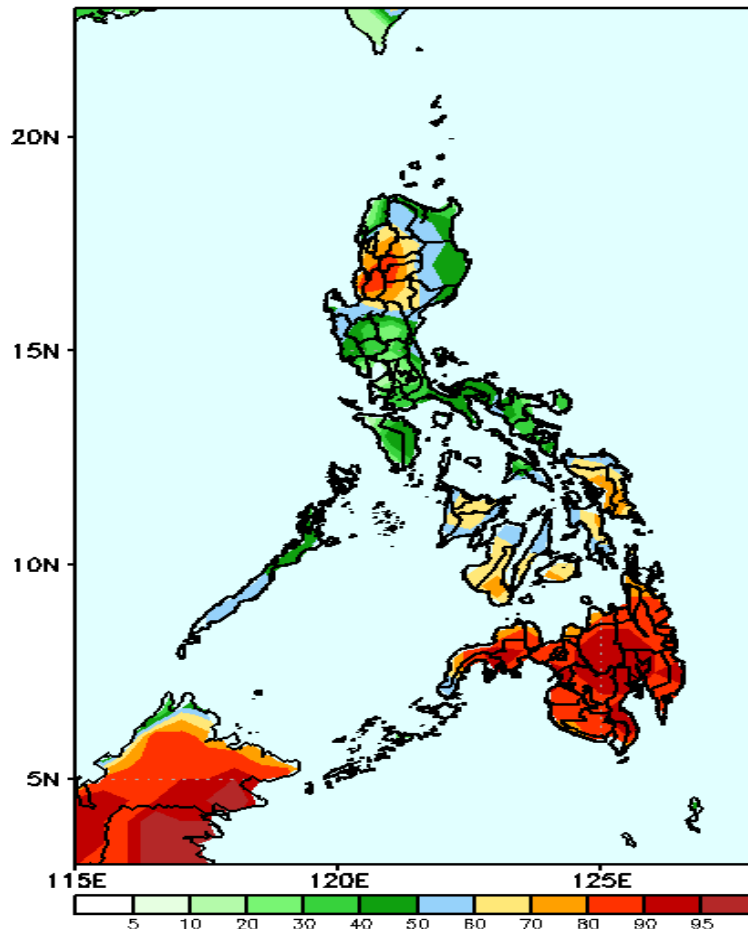
Week 2: Apr 26 – May 02, 2021

GEFS Week-2 Precip Anomaly
Valid: 20210426 – 20210502



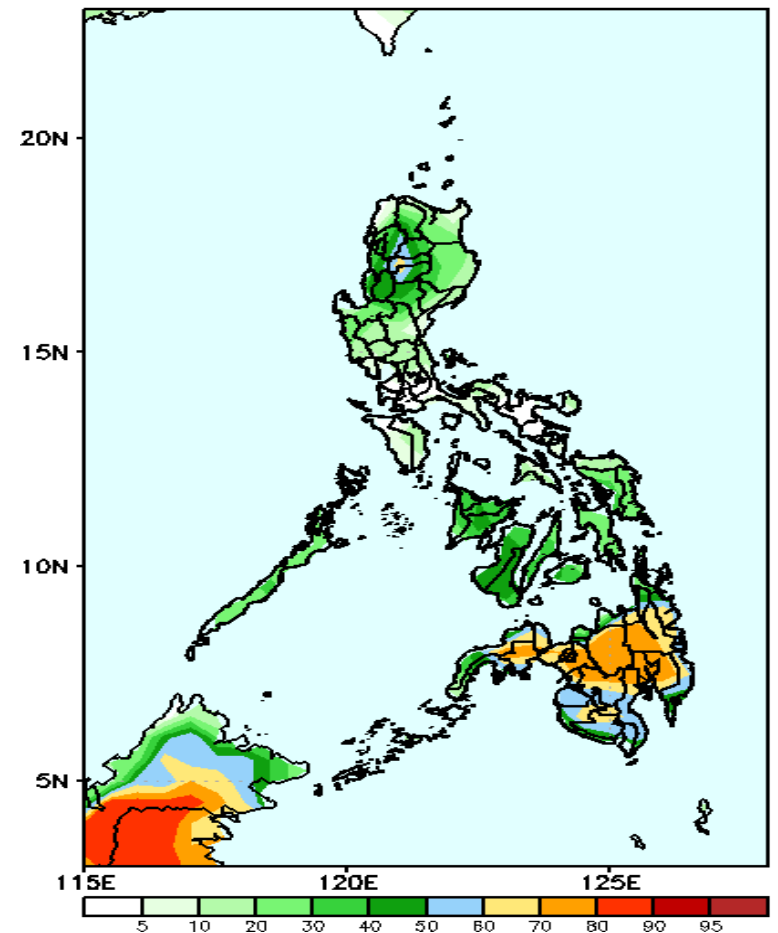
Rainfall deficit of 40-100mm is expected in most parts of the country is expected except with some patches of above normal in Central Visayas and Mindanao during the forecast period.

GEFS Week-2 Exceedance Prob. > 25mm
Valid: 20210426 – 20210502



High probability of rainfall to exceed 25mm in most parts of Cordillera Region, Nueva Vizcaya, and most parts of Visayas and Mindanao while less likely for the remaining part of the country during the forecast period.

GEFS Week-2 Exceedance Prob. > 50mm
Valid: 20210426 – 20210502

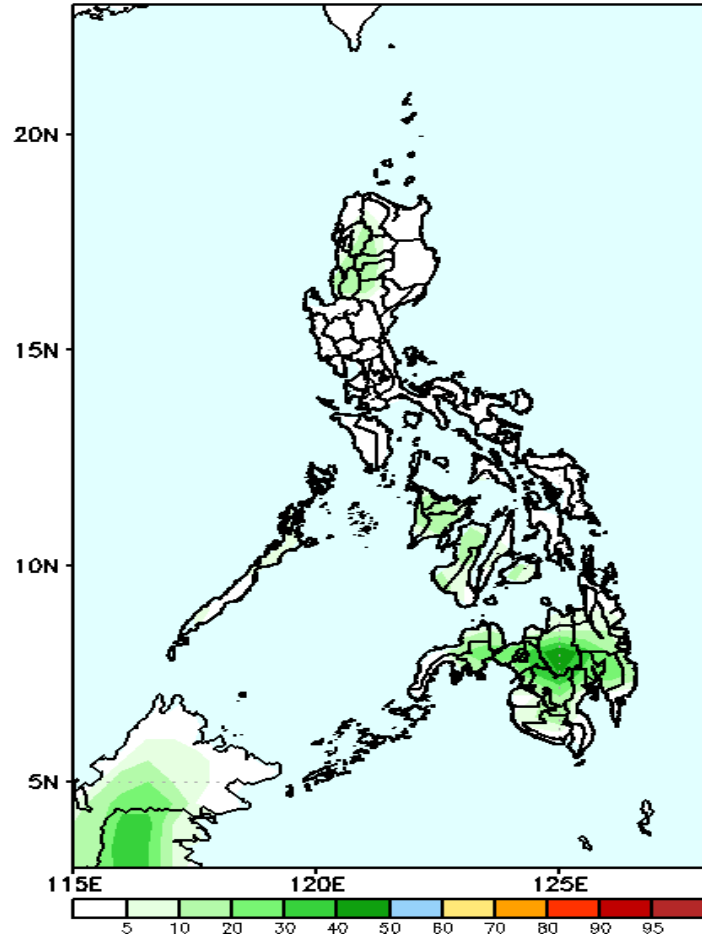


60-80% probability of rainfall to exceed 50mm in most parts of Mindanao while less likely for the rest of the country during the forecast period.

Exceedance Probability > 100/150/200 mm

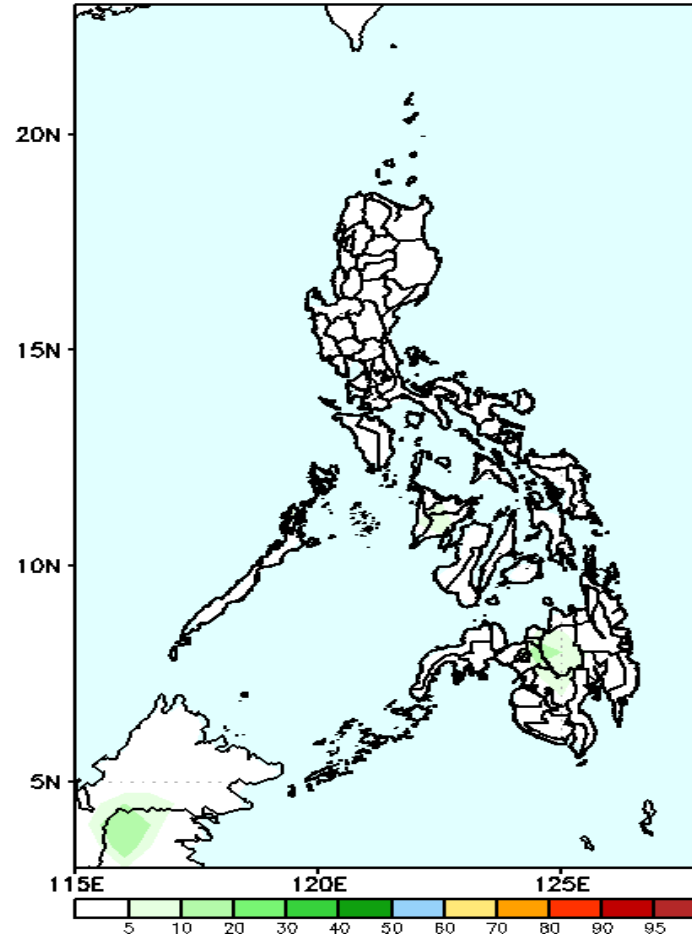
Week 2: Apr 26 – May 02, 2021

GEFS Week-2 Exceedance Prob. > 100mm
Valid: 20210426 – 20210502



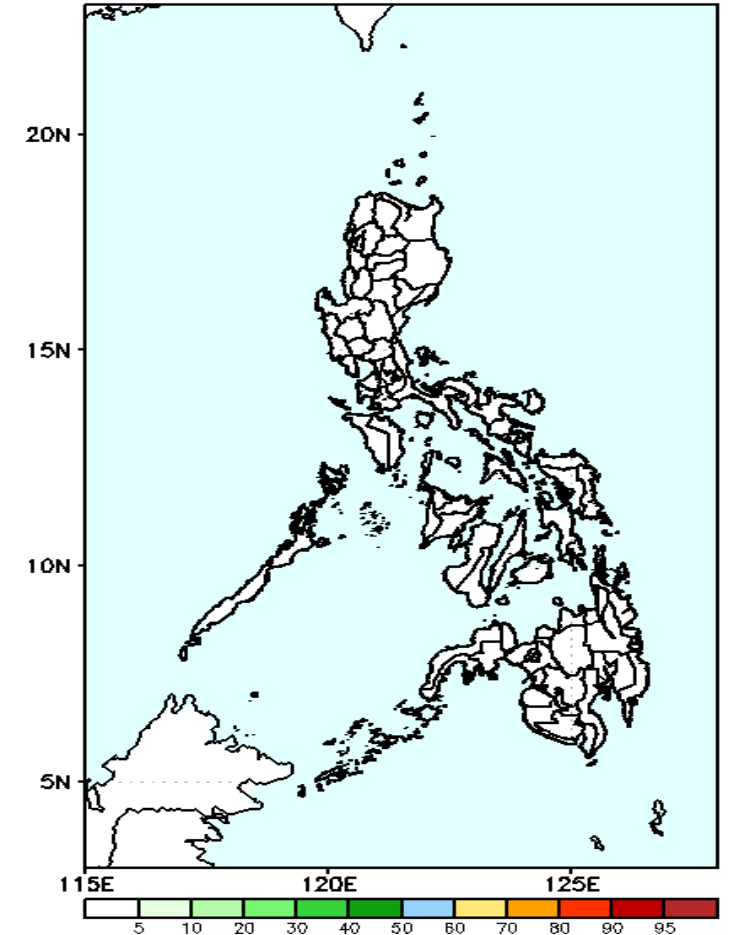
Less probability of rainfall to exceed 100mm in most parts of the country during the forecast period.

GEFS Week-2 Exceedance Prob. > 150mm
Valid: 20210426 – 20210502



Less probability of rainfall to exceed 150mm in most parts of the country during the forecast period.

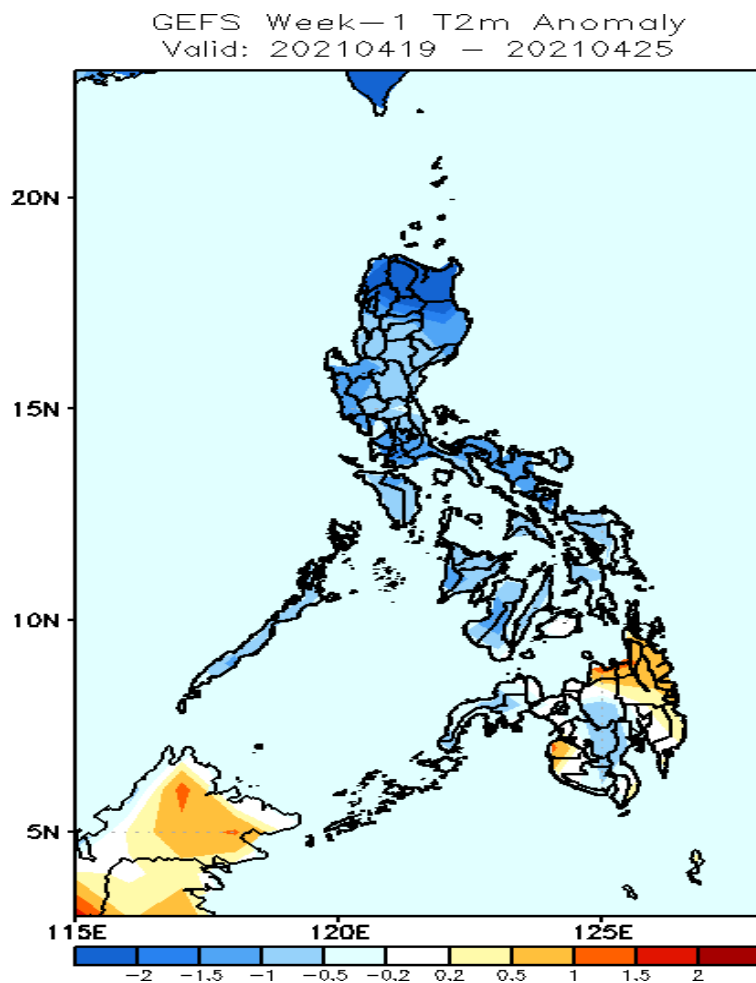
GEFS Week-2 Exceedance Prob. > 200mm
Valid: 20210426 – 20210502



Less probability of rainfall to exceed 200mm in most parts of the country during the forecast period.

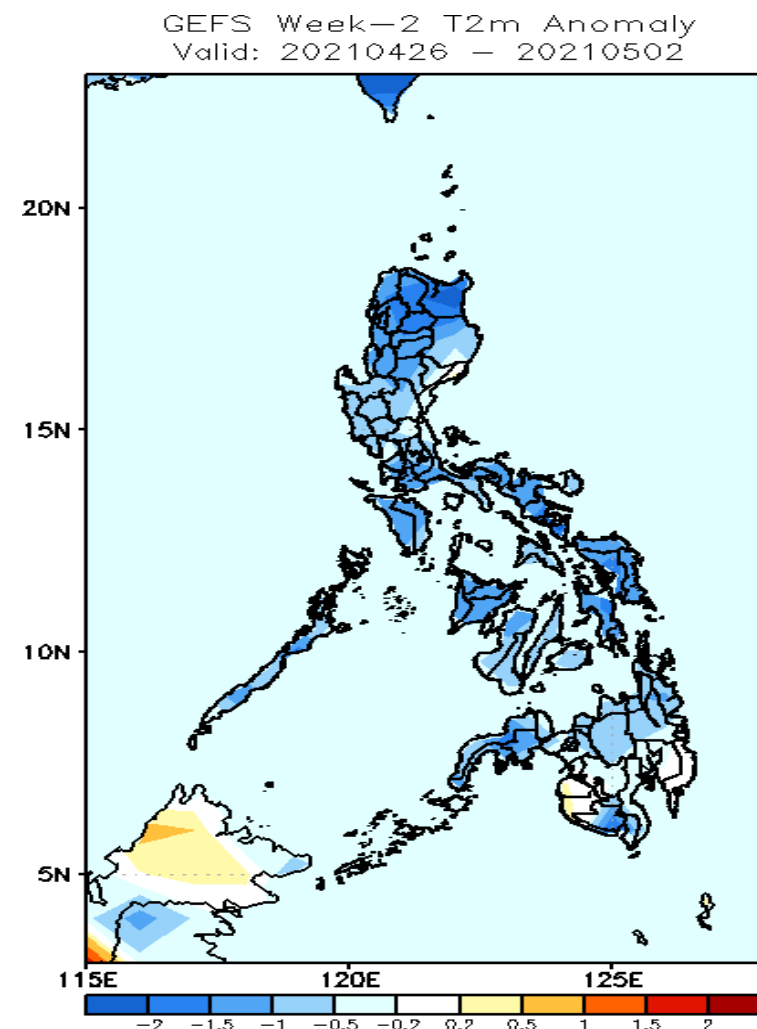


GEFS Week-1 & 2 Forecasts: T2m Anomaly



2m Temperature Week 1: April 19-25, 2021

Slightly cooler to cooler than average surface air temperature will likely experience in most parts of Luzon, Visayas and central parts of Mindanao while the rest of Mindanao will likely receive average to slightly warmer temperature during the forecast period.



2m Temperature Week 2: Apr 26 – May 02, 2021

Cooler than average surface air temperature will likely experience in most parts of the country except in southern parts of Mindanao where average to slightly cooler than average temperature is more likely.