



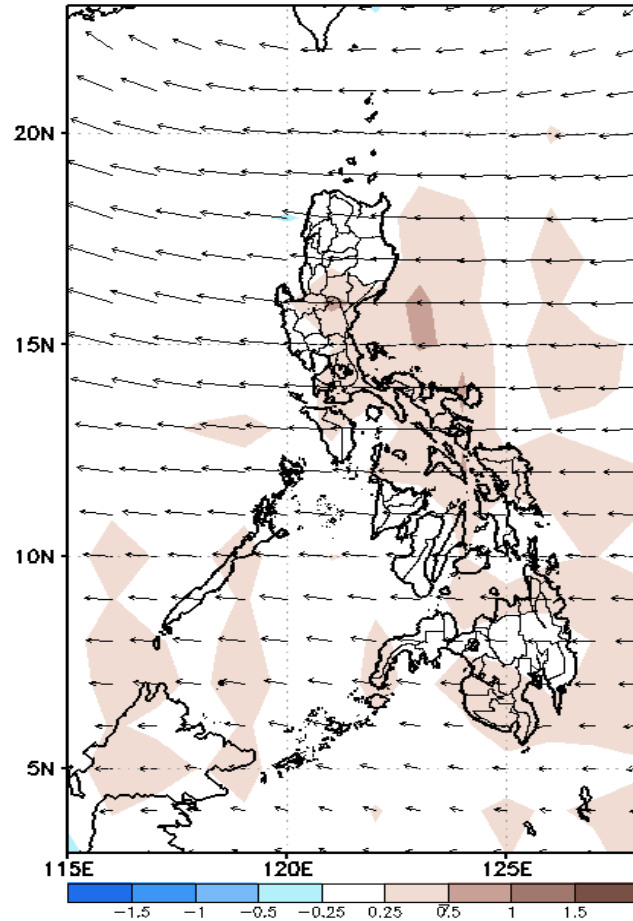
Week 1 & Week 2 Forecast for the Philippines using GEFS Model



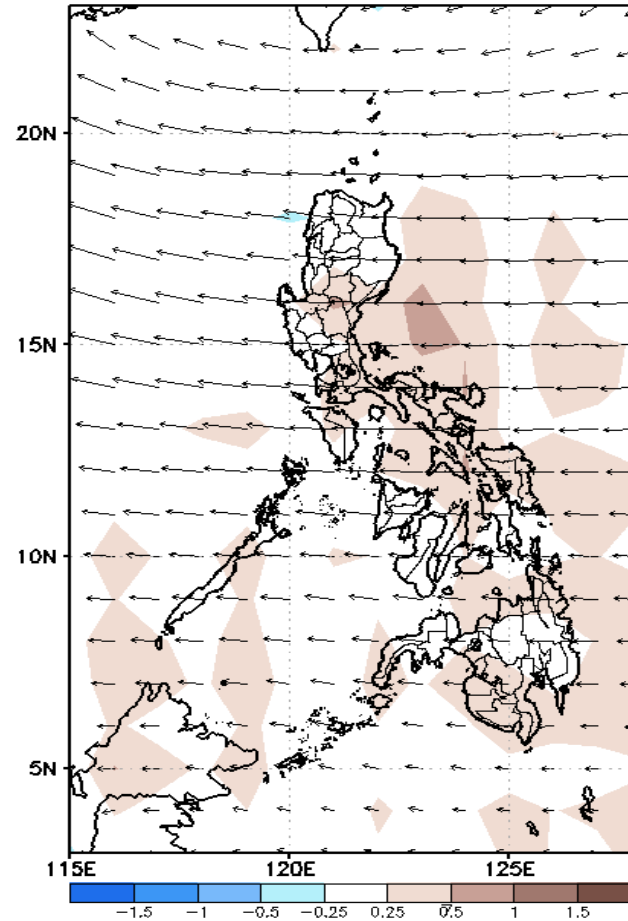
GEFS Week-1 Forecasts: Wind Anomaly Forecast

Week 1: Jul 20 - Jul 24, 2022

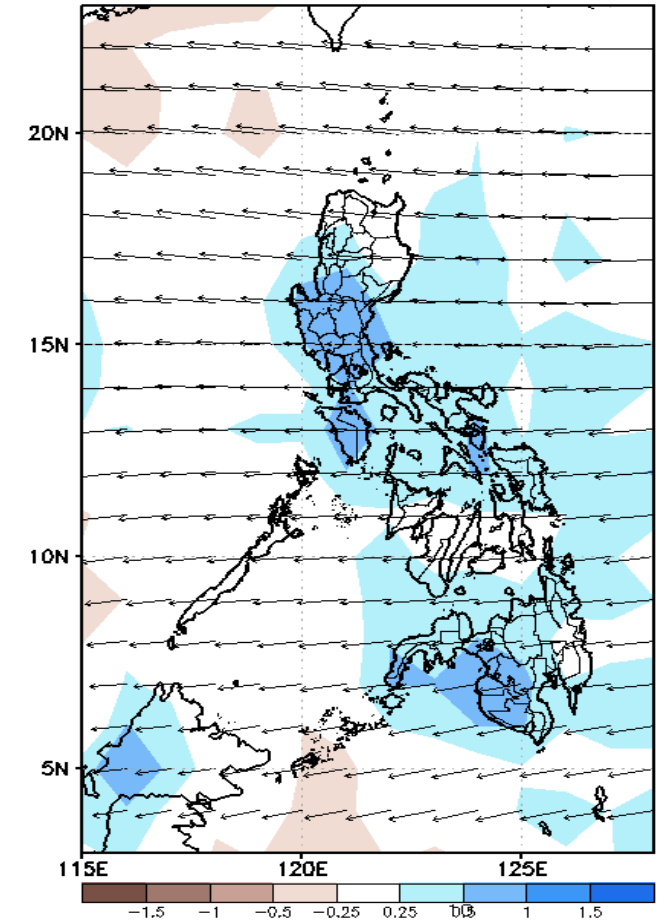
GEFS Week-1 850-hPa Divergence and Wind Anom
Valid: 20220720 - 20220726



GEFS Week-1 700-hPa Divergence and Wind Anom
Valid: 20220720 - 20220726



GEFS Week-1 200-hPa Divergence and Wind Anom
Valid: 20220720 - 20220726

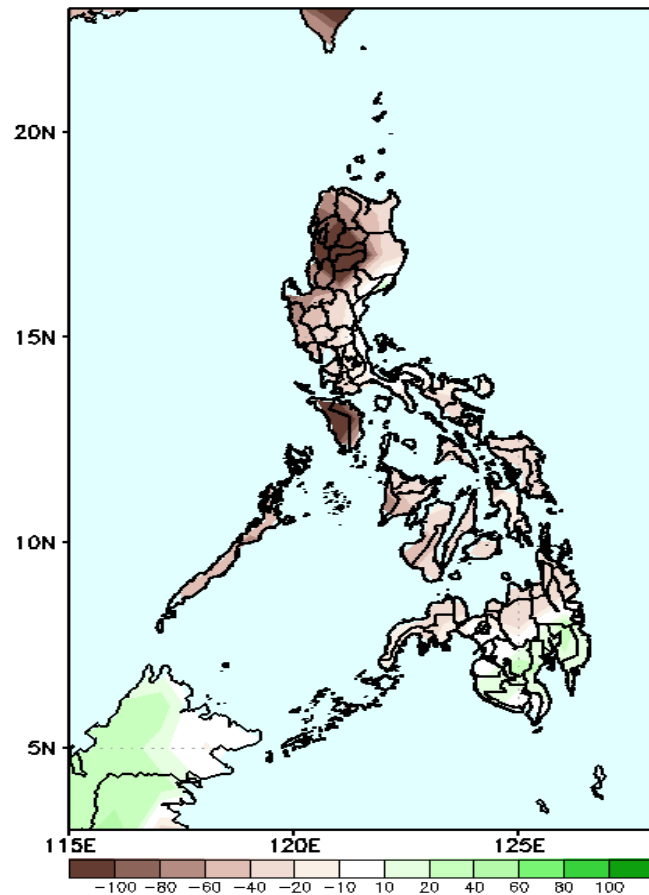


Easterlies affecting most parts of the country during the forecast period.

Precipitation Anomaly and Exceedance Probability > 25/50 mm

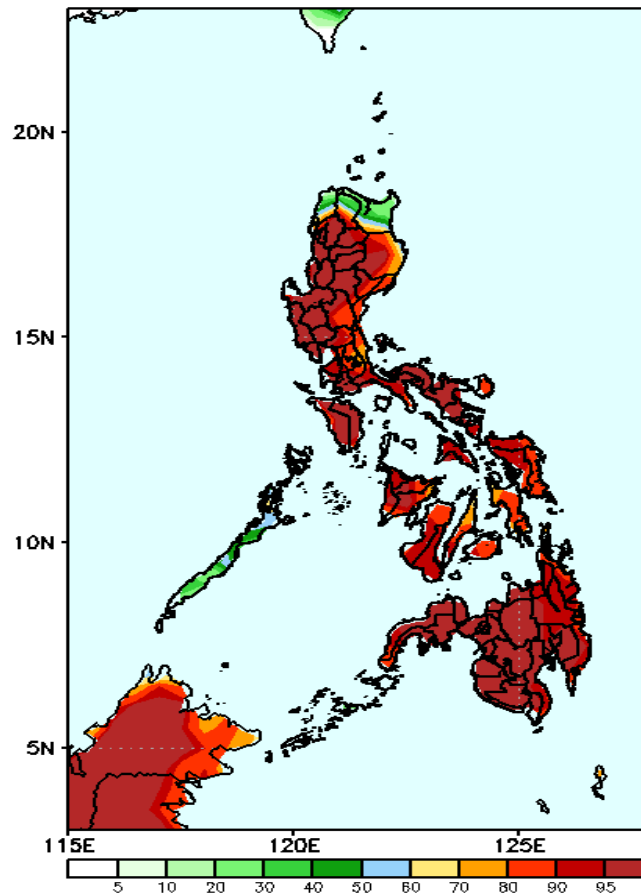
Week 1: Jul 20 - Jul 24, 2022

GEFS Week-1 Precip Anomaly
Valid: 20220720 - 20220726



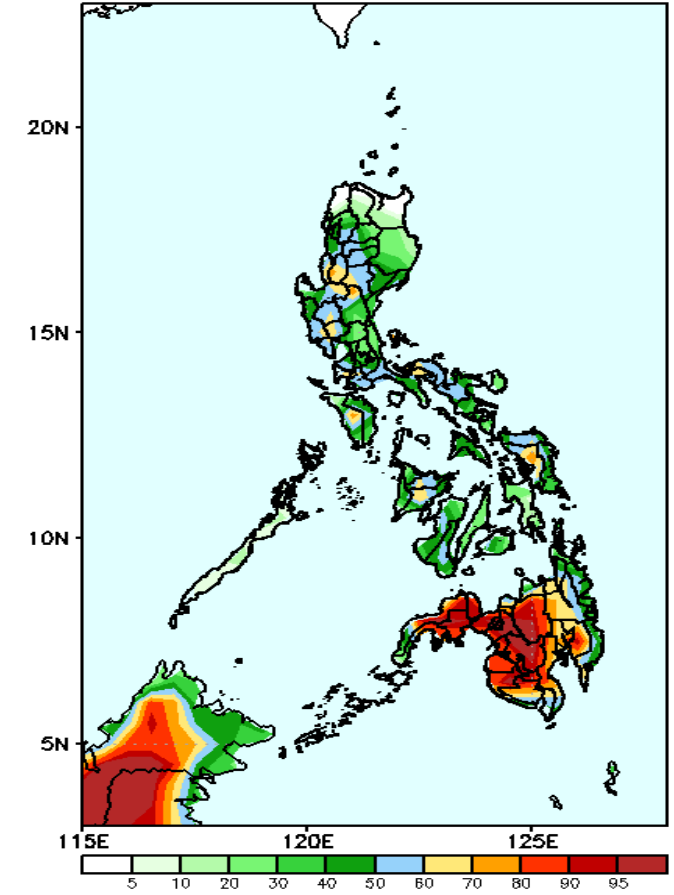
Rainfall deficit of more than 100mm is expected in Ilocos & Cordillera Region & Mindoro, 40-80mm for the rest of the country except in southern Mindanao (20-40mm increase of rainfall) during the forecast period.

GEFS Week-1 Exceedance Prob. > 25mm
Valid: 20220720 - 20220726



High probability of rainfall to exceed 25mm in most parts of the country except in Ilocos Norte, Apayao and Cagayan during the forecast period.

GEFS Week-1 Exceedance Prob. > 50mm
Valid: 20220720 - 20220726

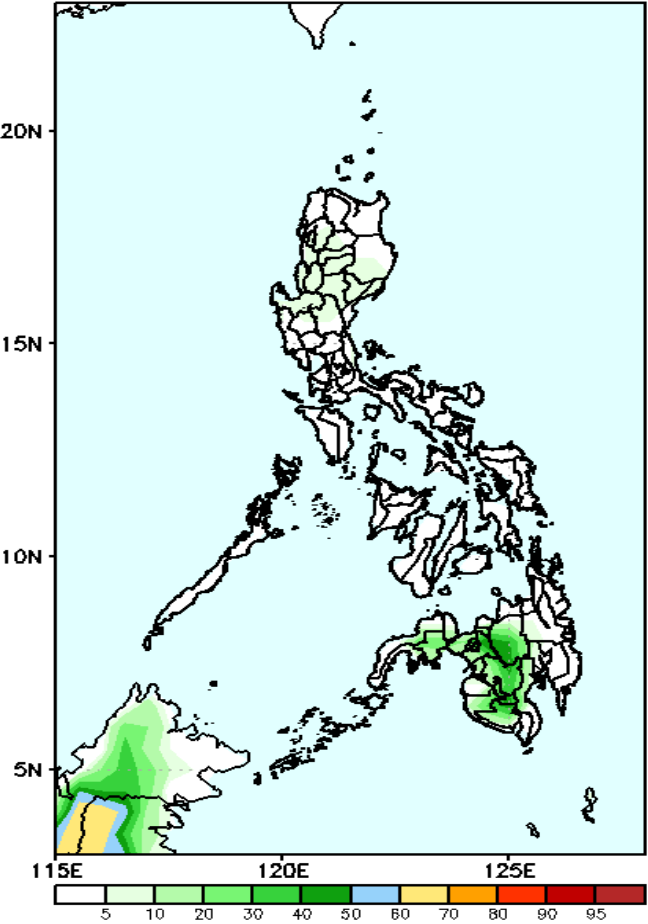


High probability of rainfall to exceed 50mm in western and central parts of Mindanao while 50-70% chance for the rest of the country during the forecast period.

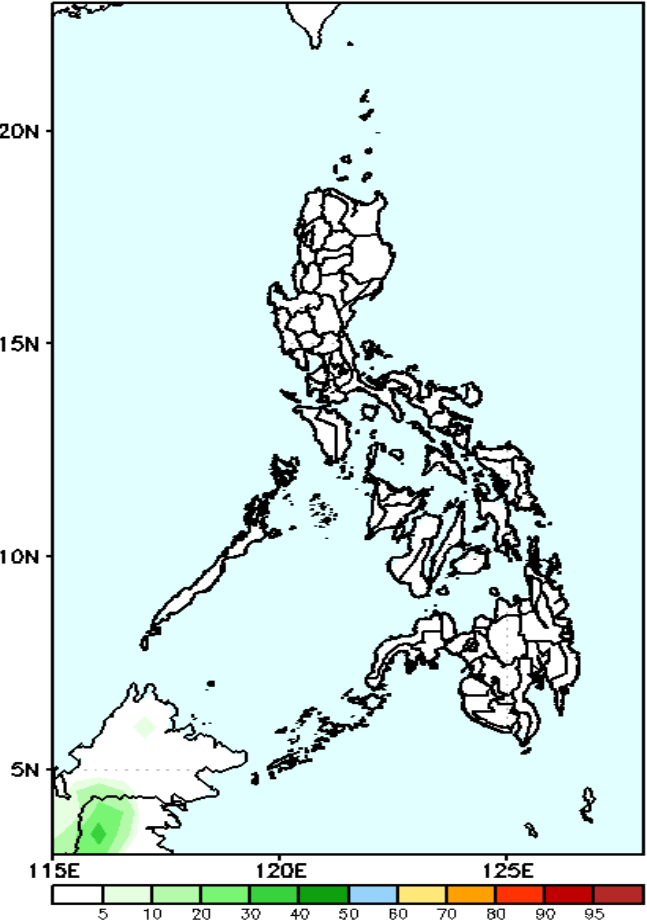
Exceedance Probability > 100/150/200 mm

Week 1: Jul 20 - Jul 24, 2022

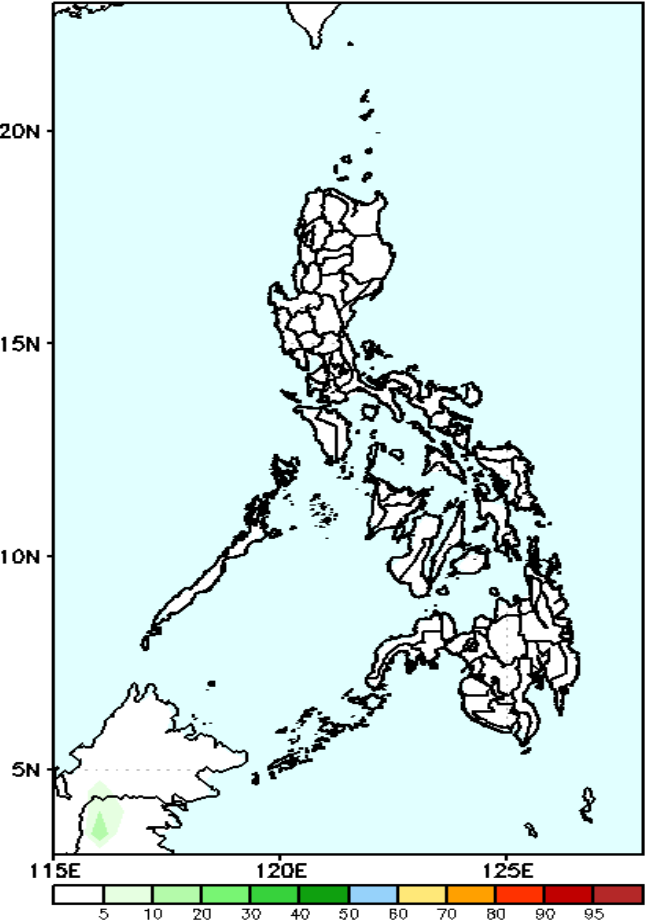
GEFS Week-1 Exceedance Prob. > 100mm
Valid: 20220720 - 20220726



GEFS Week-1 Exceedance Prob. > 150mm
Valid: 20220720 - 20220726



GEFS Week-1 Exceedance Prob. > 200mm
Valid: 20220720 - 20220726



Low probability of rainfall to exceed 100mm in most parts of the country during the forecast period.

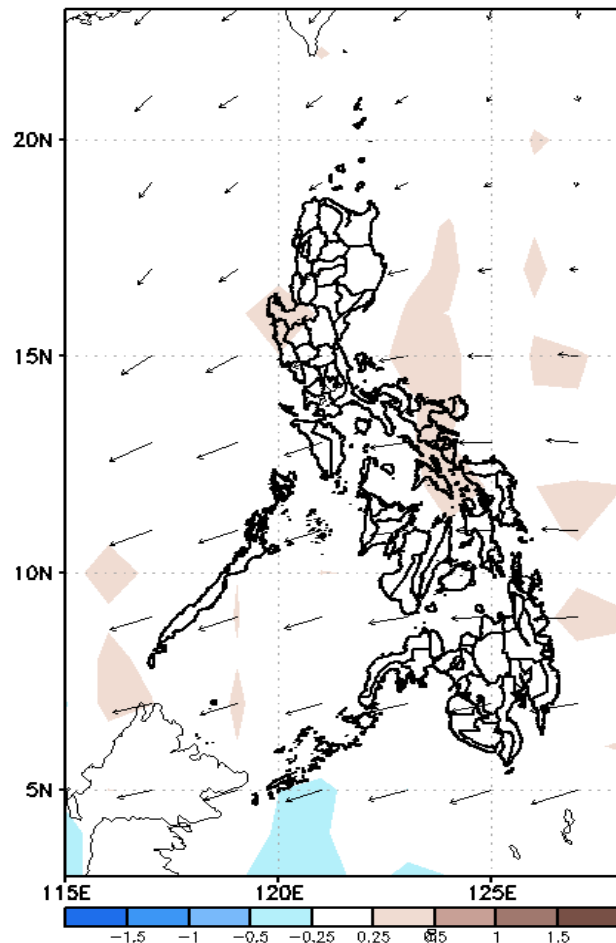
Low probability of rainfall to exceed 150mm in most parts of the country during the forecast period.

Low probability of rainfall to exceed 200mm in most parts of the country during the forecast period.

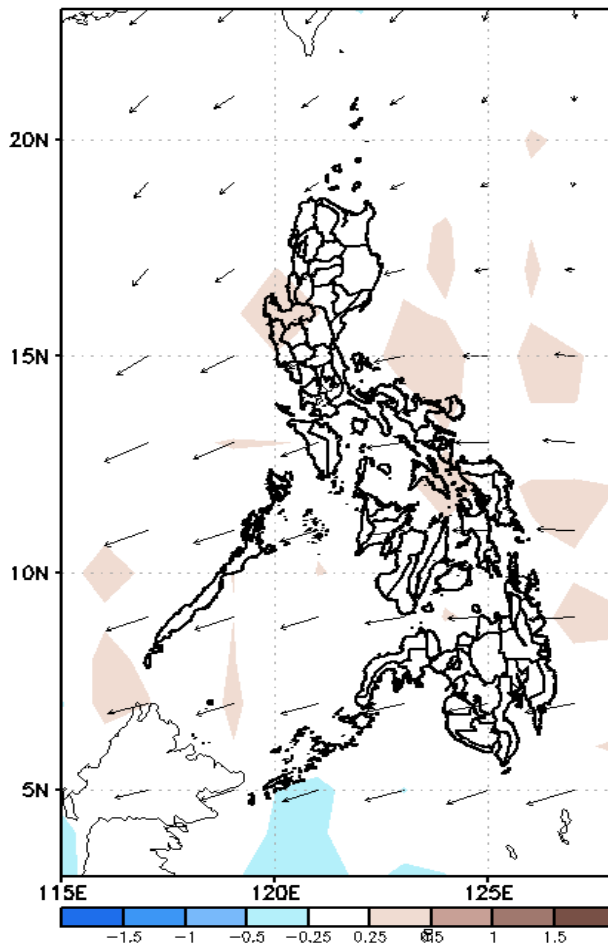
GEFS Week-2 Forecasts: Wind Anomaly Forecast

Week 2: Jul 27 – Aug 02, 2022

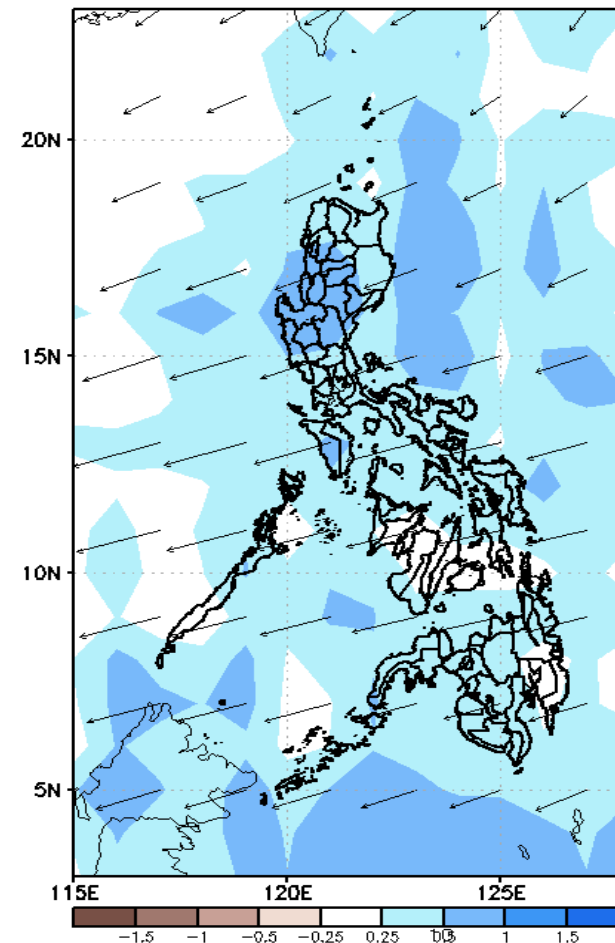
GEFS Week-2 850-hPa Divergence and Wind Anom
Valid: 20220727 – 20220802



GEFS Week-2 700-hPa Divergence and Wind Anom
Valid: 20220727 – 20220802



GEFS week-2 200-hPa Divergence and Wind Anom
Valid: 20220727 – 20220802

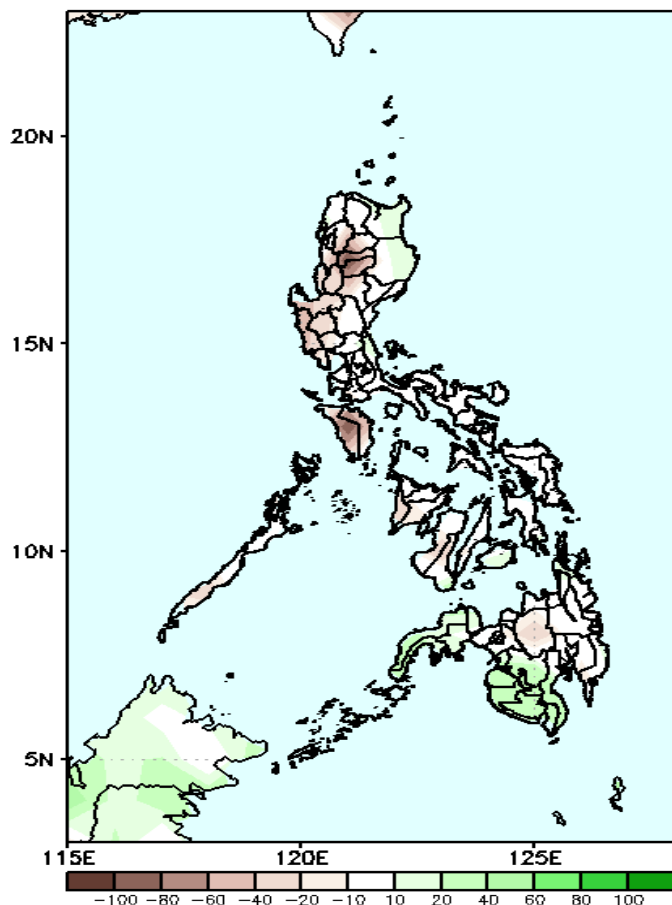


Easterlies affecting most parts of the country during the forecast period.

Precipitation Anomaly and Exceedance Probability > 25/50 mm

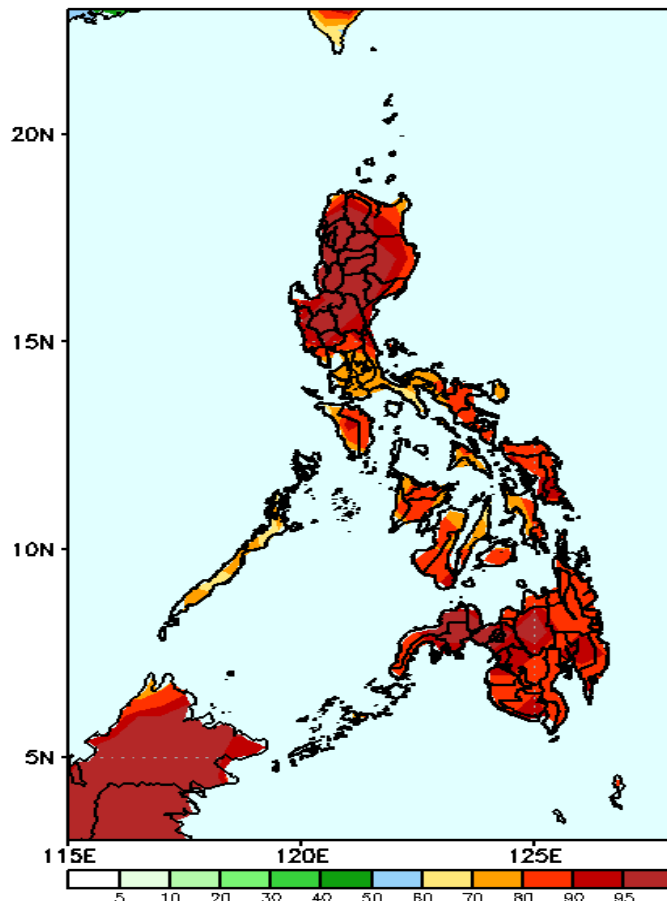
Week 2: Jul 27 – Aug 02, 2022

GEFS Week-2 Precip Anomaly
Valid: 20220727 – 20220802



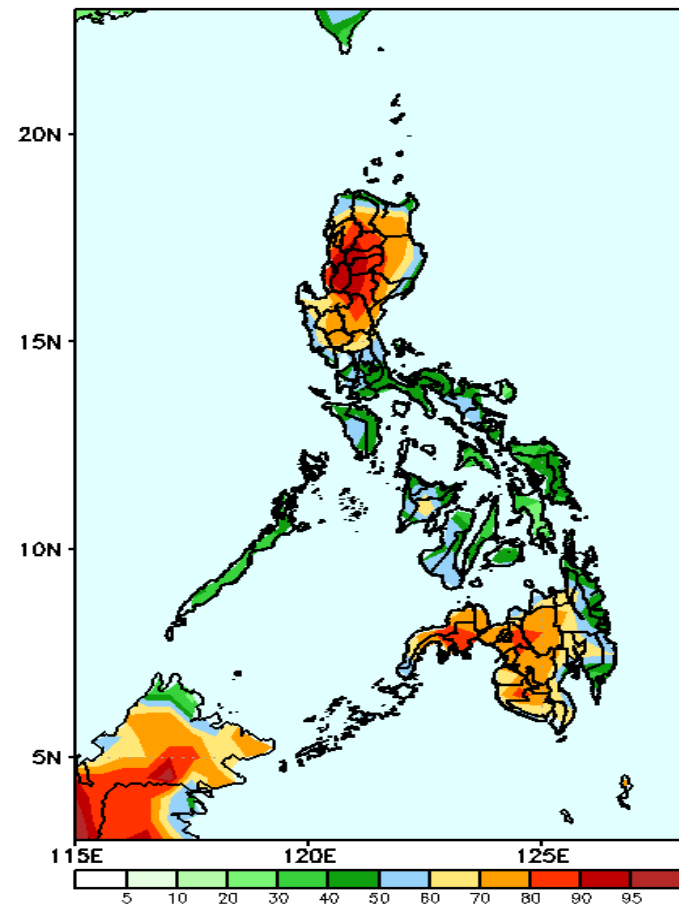
Rainfall deficit of 40-80mm is expected in western parts of Luzon (including Kalinga and Mt. Province) while increase of rainfall of 40-80mm in western Mindanao during the forecast period.

GEFS Week-2 Exceedance Prob. > 25mm
Valid: 20220727 – 20220802



High probability of rainfall to exceed 25mm in most parts of the country during the forecast period.

GEFS Week-2 Exceedance Prob. > 50mm
Valid: 20220727 – 20220802

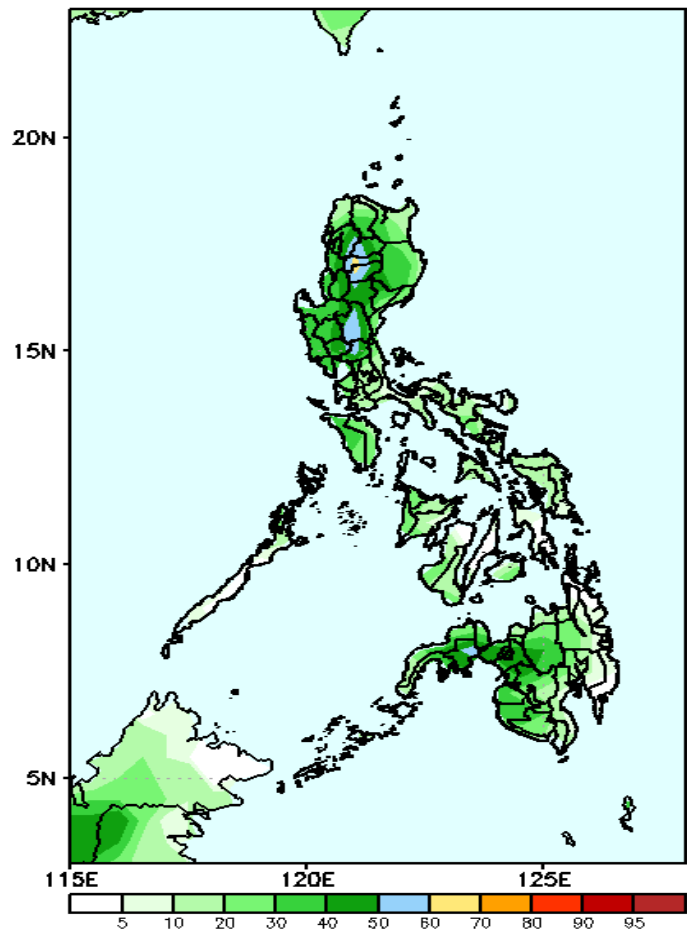


High probability of rainfall to exceed 50mm in most parts of Northern & Central Luzon and western and central Mindanao while less likely for the rest of the country during the forecast period..

Exceedance Probability > 100/150/200 mm

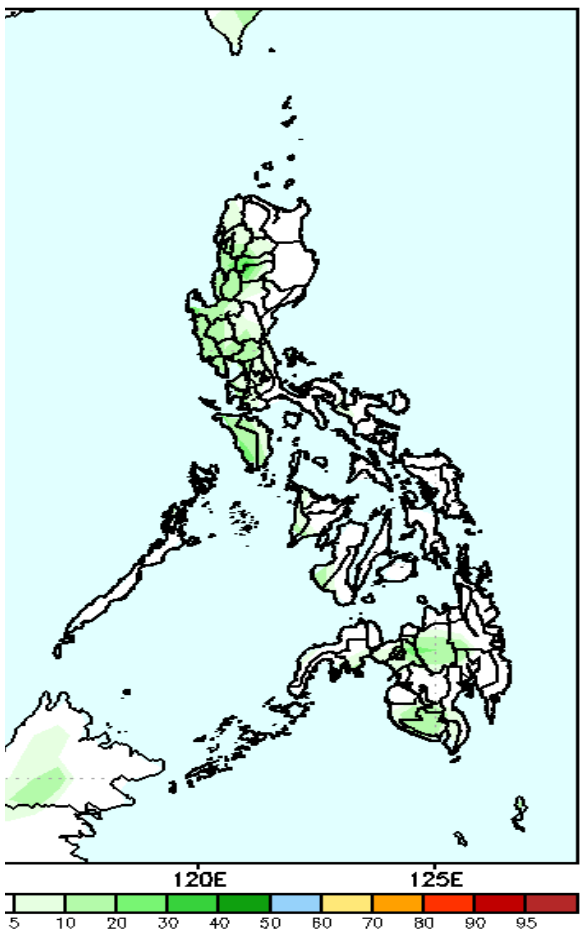
Week 2: Jul 27 – Aug 02, 2022

GEFS Week-2 Exceedance Prob. > 100mm
Valid: 20220727 – 20220802



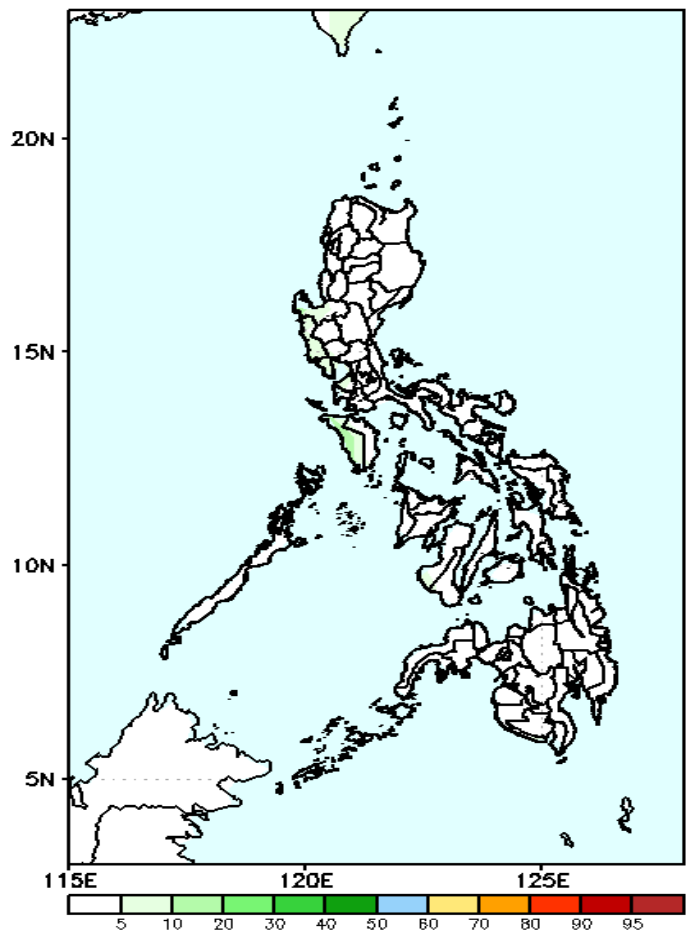
Low probability of rainfall to exceed 100mm in most parts of the country during the forecast period.

Week-2 Exceedance Prob. > 150mm
Valid: 20220727 – 20220802



Low probability of rainfall to exceed 150mm in most parts of the country during the forecast period.

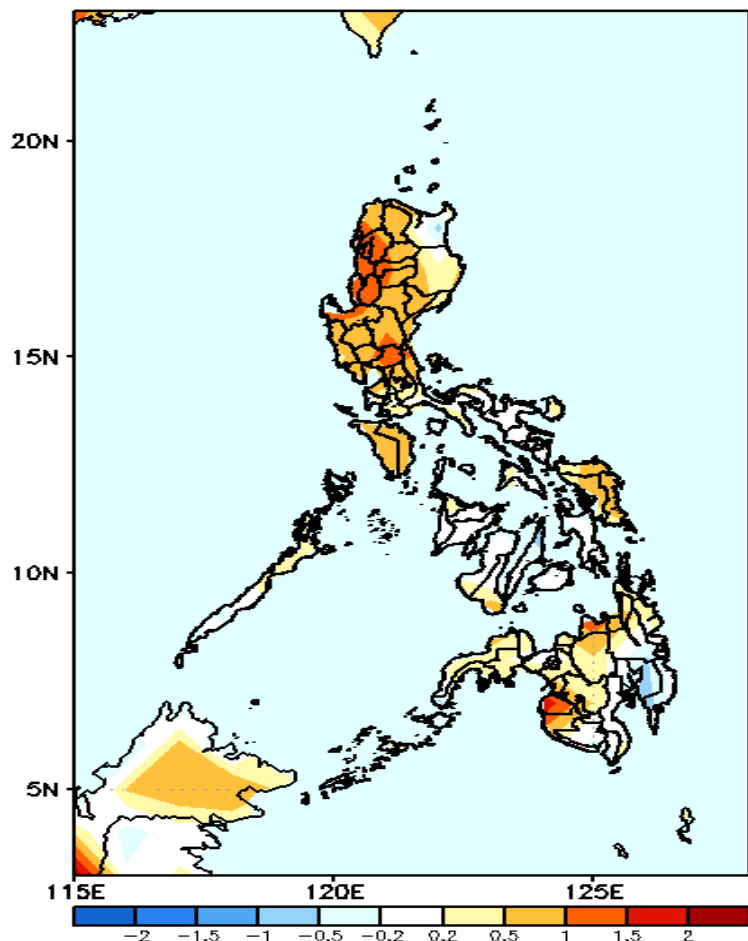
GEFS Week-2 Exceedance Prob. > 200mm
Valid: 20220727 – 20220802



Low probability of rainfall to exceed 200mm in most parts of the country during the forecast period.

GEFS Week-1 & 2 Forecasts: T2m Anomaly

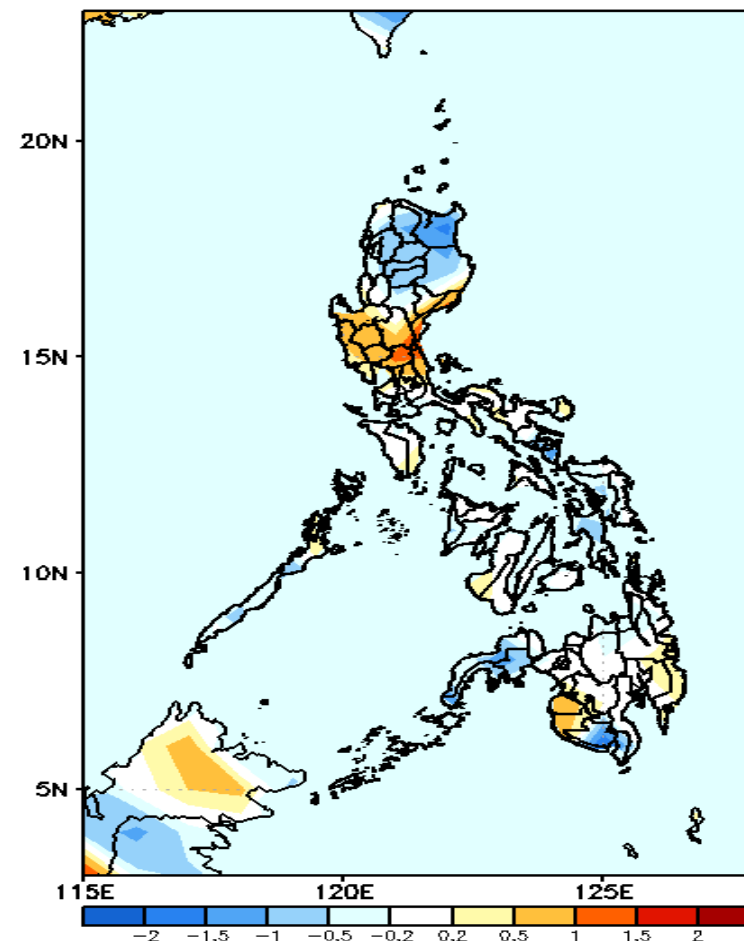
GEFS Week-1 T2m Anomaly
Valid: 20220720 - 20220726



2m Temperature Week 1: Jul 20 - Jul 24, 2022

Slightly warmer to warmer than average surface air temperature will likely experience in most parts of Luzon & Mindanao and Samar Provinces, slightly cooler in Compostela Valley and normal temperature for the rest of Visayas during the forecast period.

GEFS Week-2 T2m Anomaly
Valid: 20220727 - 20220802



2m Temperature Week 2: Jul 27 - Aug 02, 2022

Slightly cooler to cooler than average surface air temperature will likely experience in northern Luzon, Sorsogon, Leyte, Zamboanga Peninsula and South Cotabato; slightly warmer to warmer than average temperature in Pangasinan, Central Luzon, Rizal and parts of Quezon and near average for the rest of the country during the forecast period.