



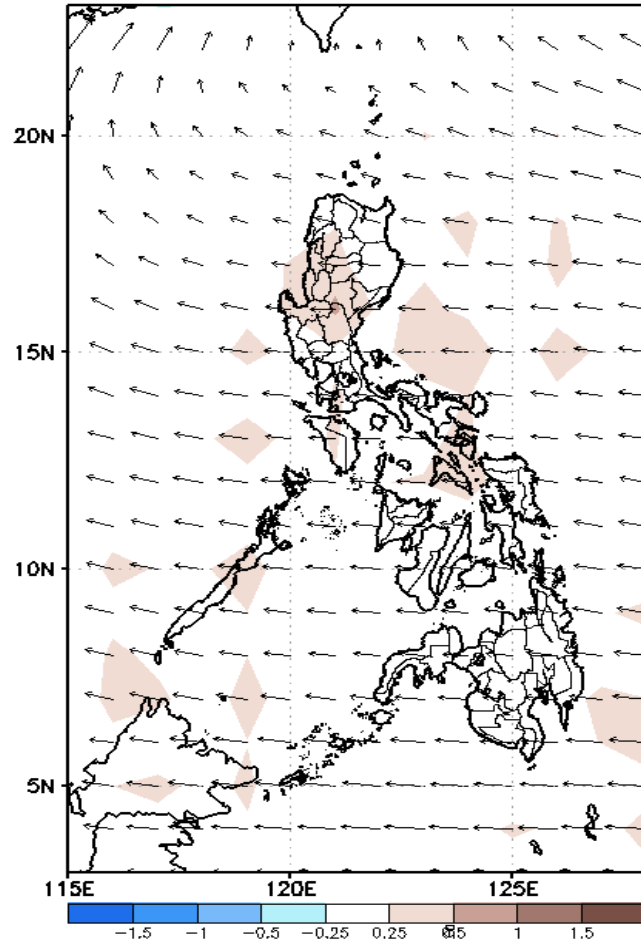
Week 1 & Week 2 Forecast for the Philippines using GEFS Model



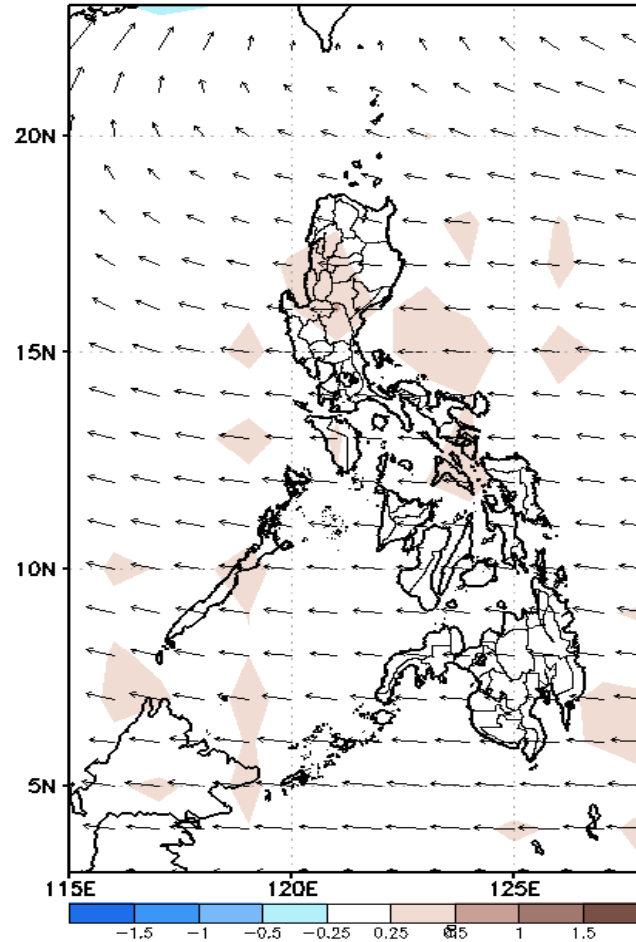
GEFS Week-1 Forecasts: Wind Anomaly Forecast

Week 1 Jun 20-26, 2022

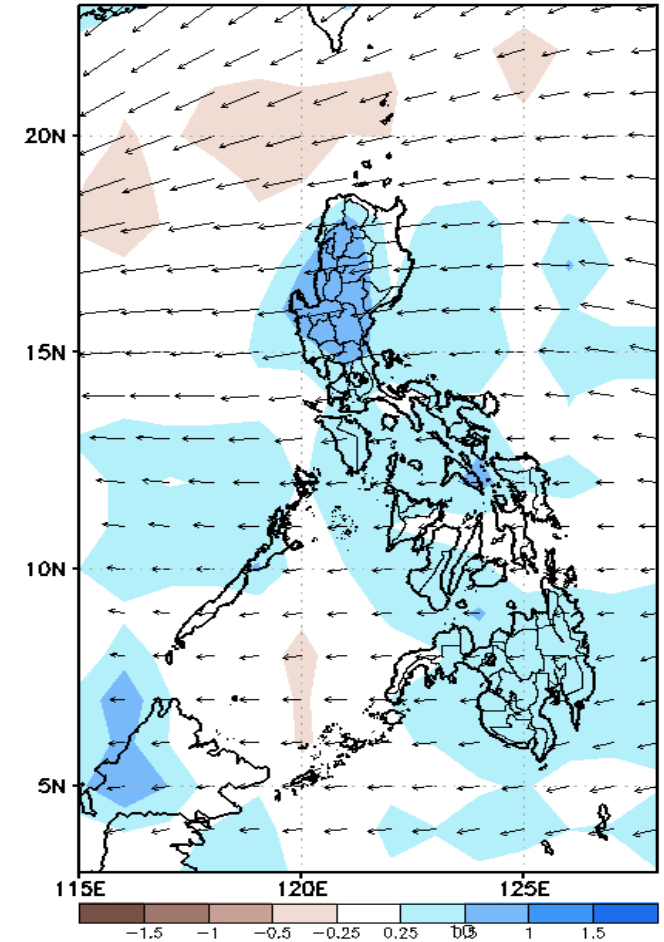
GEFS Week-1 850-hPa Divergence and Wind Anom
Valid: 20220620 - 20220626



GEFS Week-1 700-hPa Divergence and Wind Anom
Valid: 20220620 - 20220626



GEFS Week-1 200-hPa Divergence and Wind An
Valid: 20220620 - 20220626

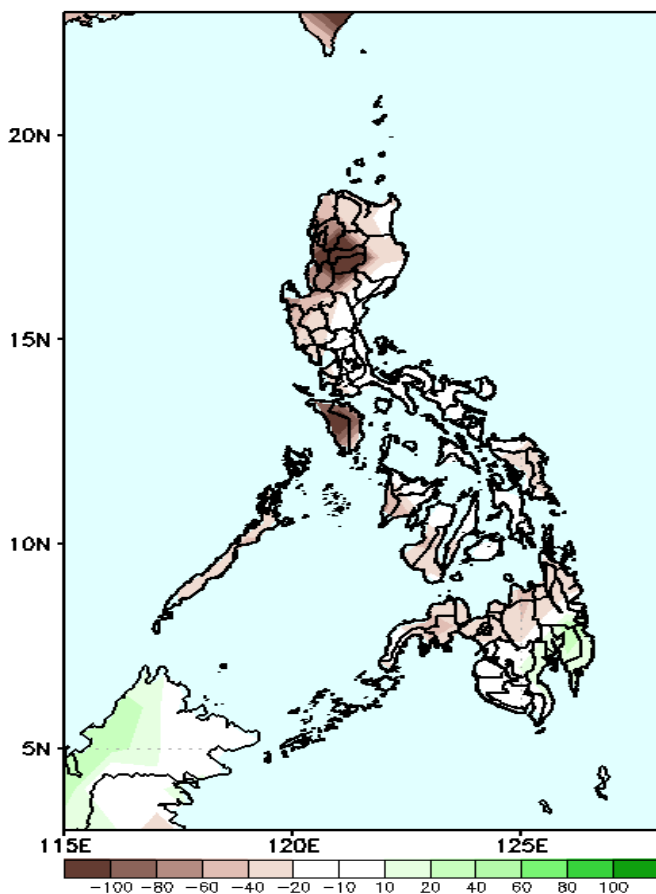


Easterlies affecting most parts of the country attributing to high likelihood of localized thunderstorms in most parts of the country during the forecast period

Precipitation Anomaly and Exceedance Probability > 25/50 mm

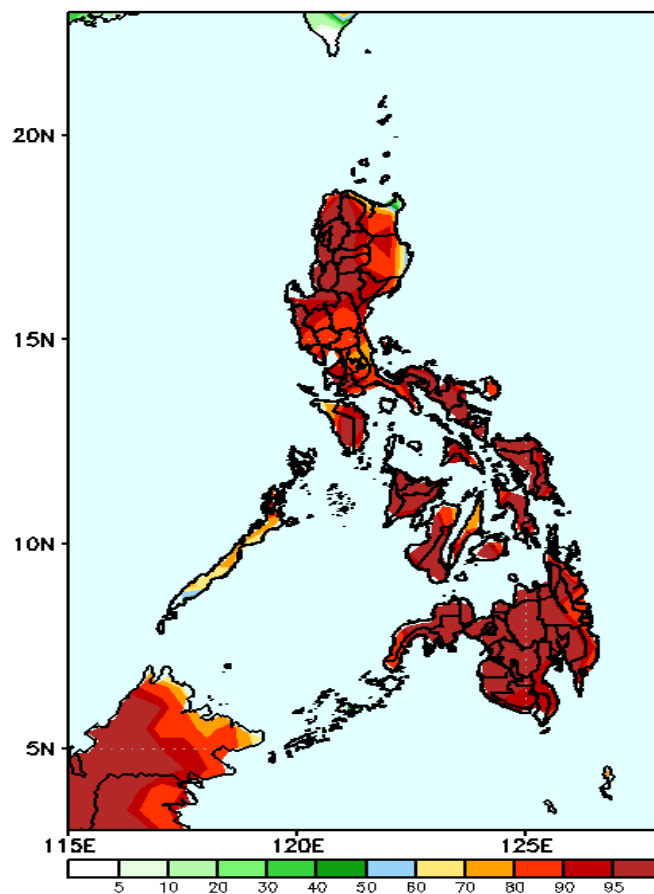
Week 1: Jun 20-26, 2022

GEFS Week-1 Precip Anomaly
Valid: 20220620 - 20220626



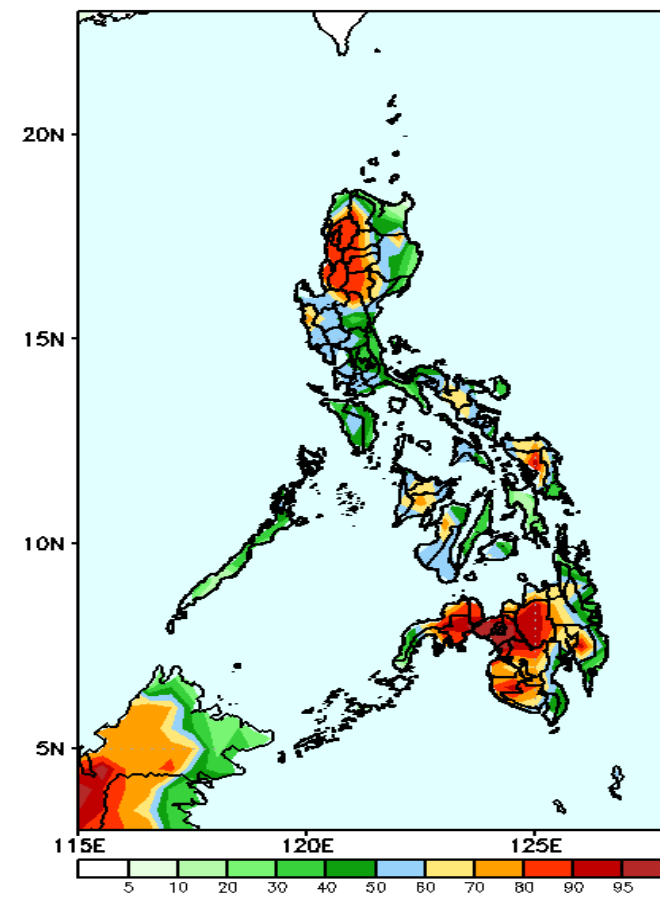
Rainfall deficit of more than 100mm is expected in Ilocos & Cordillera Region & Mindoro, 40-80mm for the rest of the country except in Davao Region (20-40mm increase of rainfall) during the forecast period.

GEFS Week-1 Exceedance Prob. > 25mm
Valid: 20220620 - 20220626



High probability of rainfall to exceed 25mm in most parts of the country during the forecast period.

GEFS Week-1 Exceedance Prob. > 50mm
Valid: 20220620 - 20220626

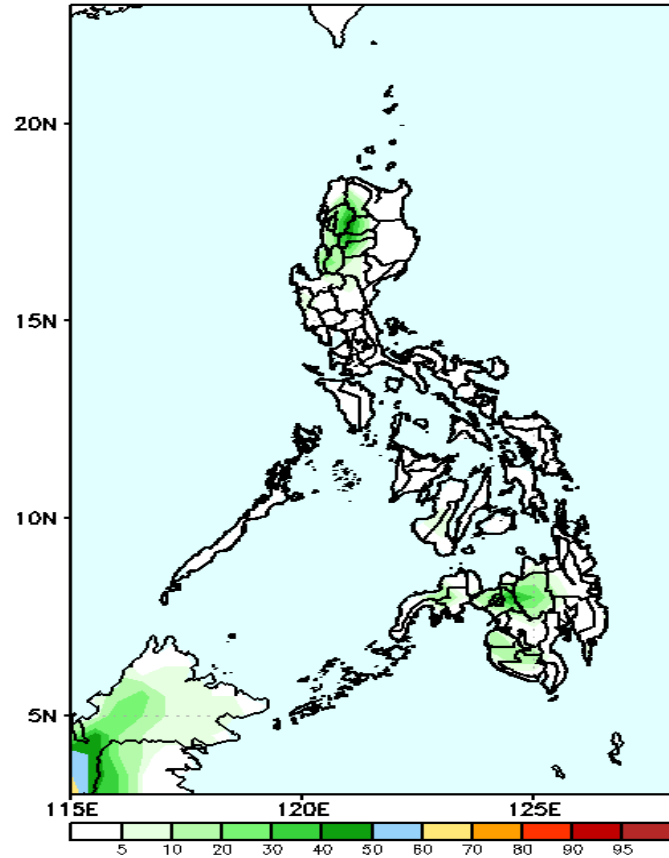


High probability of rainfall to exceed 50mm in most parts of Ilocos & Cordillera Region, Nueva Viscaya, Zambales, northern and western Samar, Capiz, Iloilo, and most parts of western and central Mindanao while less likely for the rest the country during the forecast period.

Exceedance Probability > 100/150/200 mm

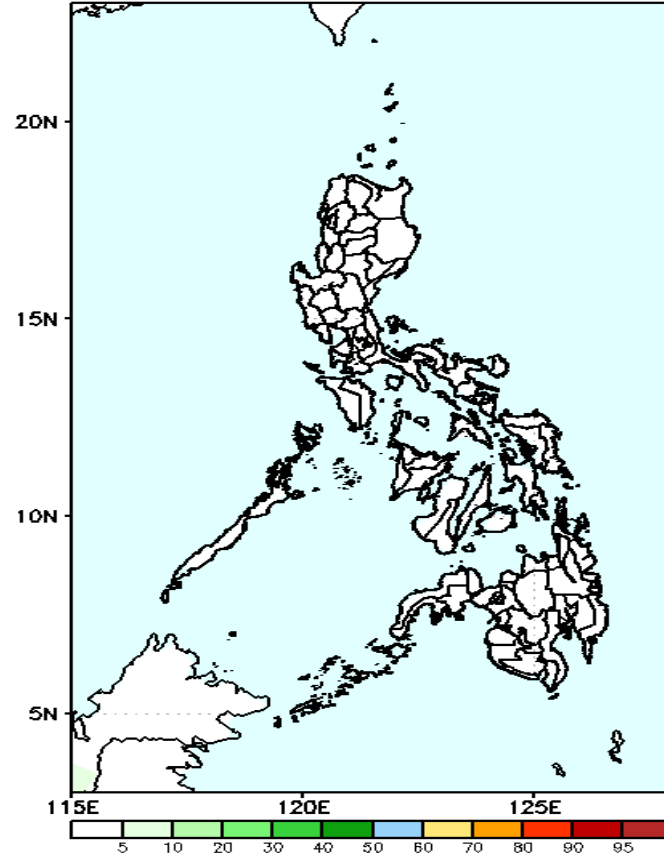
Week 1: Jun 20-26, 2022

GEFS Week-1 Exceedance Prob. > 100mm
Valid: 20220620 - 20220626



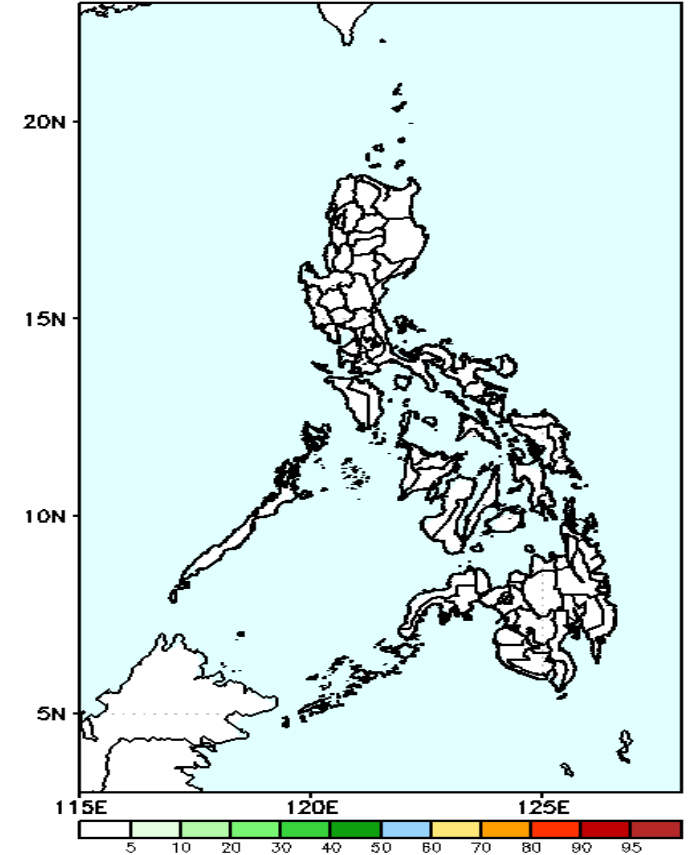
Low probability of rainfall to exceed 100mm in most parts of the country during the forecast period.

GEFS Week-1 Exceedance Prob. > 150mm
Valid: 20220620 - 20220626



Low probability of rainfall to exceed 150mm in most parts of the country during the forecast period.

GEFS Week-1 Exceedance Prob. > 200mm
Valid: 20220620 - 20220626

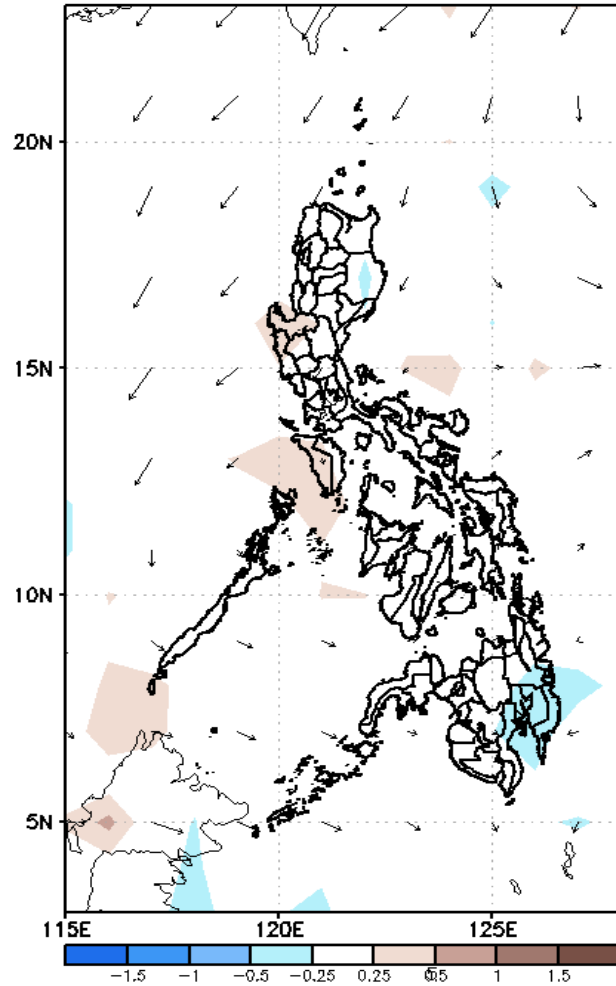


Low probability of rainfall to exceed 200mm in most parts of the country during the forecast period.

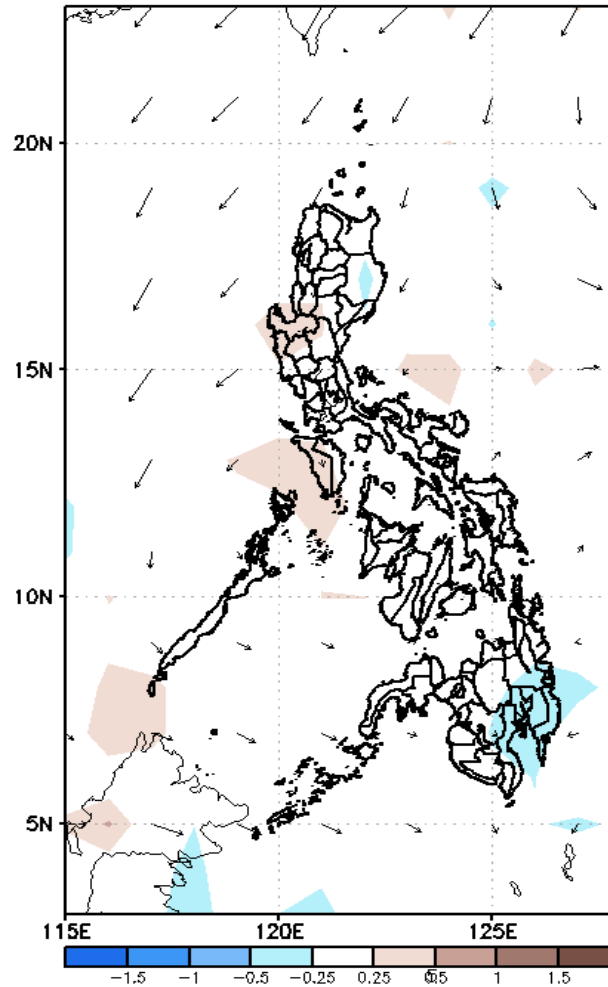
GEFS Week-2 Forecasts: Wind Anomaly Forecast

Week 2: Jun 27- Jul 03, 2022

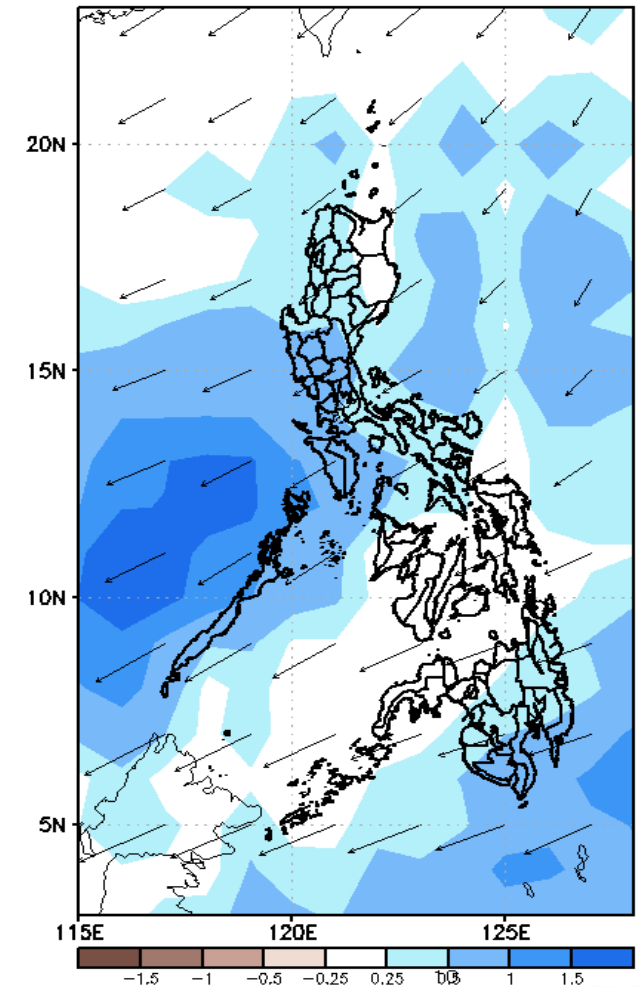
GEFS Week-2 850-hPa Divergence and Wind Anom.
Valid: 20220627 - 20220703



GEFS Week-2 700-hPa Divergence and Wind Anom.
Valid: 20220627 - 20220703



GEFS week-2 200-hPa Divergence and Wind Anom.
Valid: 20220627 - 20220703

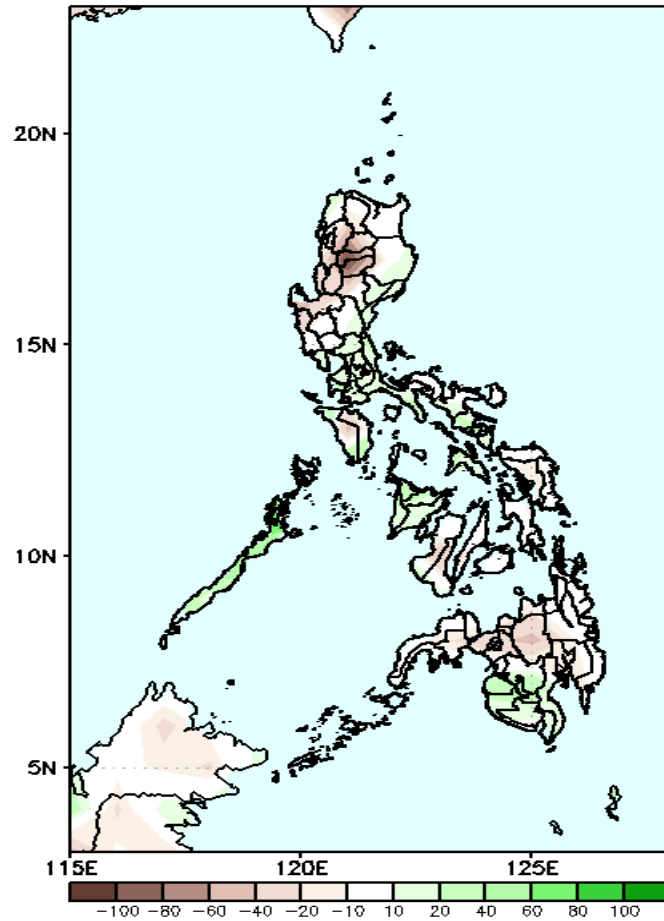


Easterlies affecting most parts of the country attributing to high likelihood of localized thunderstorms in most parts of the country during the forecast period

Precipitation Anomaly and Exceedance Probability > 25/50 mm

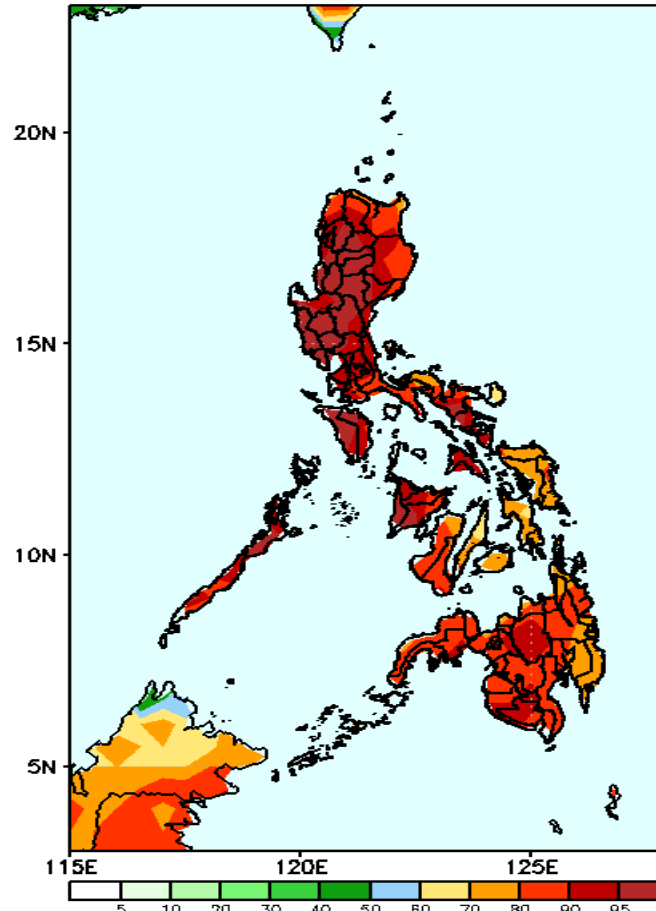
Week 2: Jun 27- Jul 03, 2022

GEFS Week-2 Precip Anomaly
Valid: 20220627 - 20220703



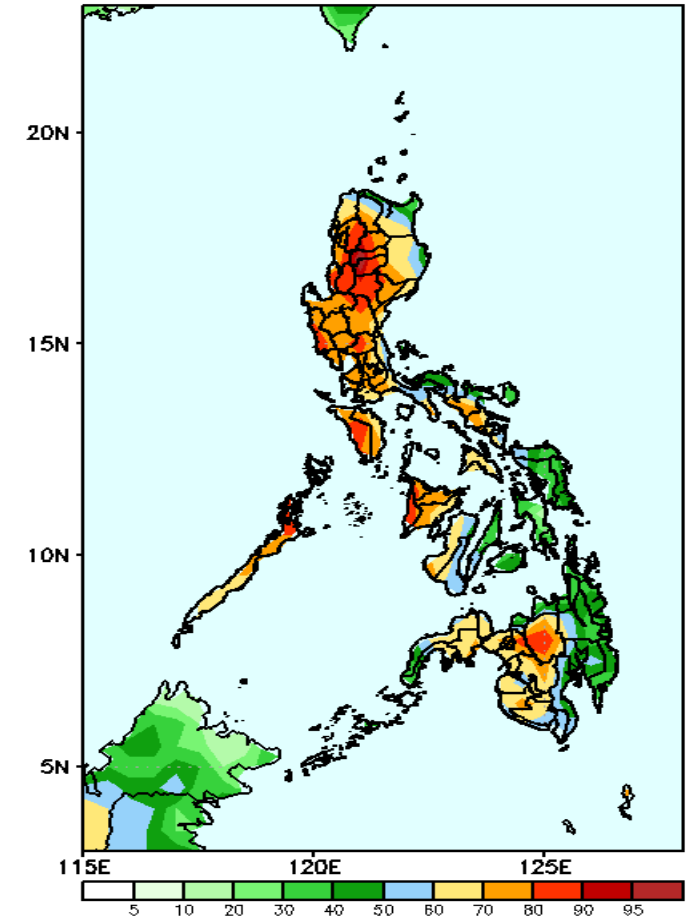
Rainfall deficit of 40-80mm is expected in Cordillera Region and 20-40mm for the rest of the country (except in Palawan, Aklan, Capiz and Maguindanao during the forecast period).

GEFS Week-2 Exceedance Prob. > 25mm
Valid: 20220627 - 20220703



High probability of rainfall to exceed 25mm in most parts of the country during the forecast period.

GEFS Week-2 Exceedance Prob. > 50mm
Valid: 20220627 - 20220703

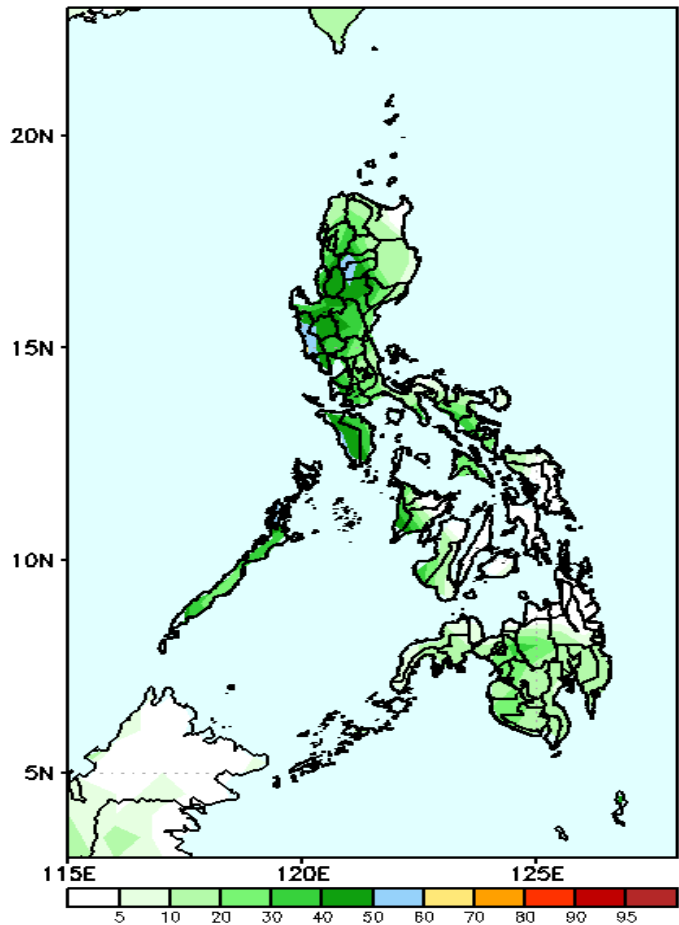


High probability of rainfall to exceed 50mm in most parts of Luzon, western Visayas and Mindanao including Bukidnon while less likely for the rest the country during the forecast period

Exceedance Probability > 100/150/200 mm

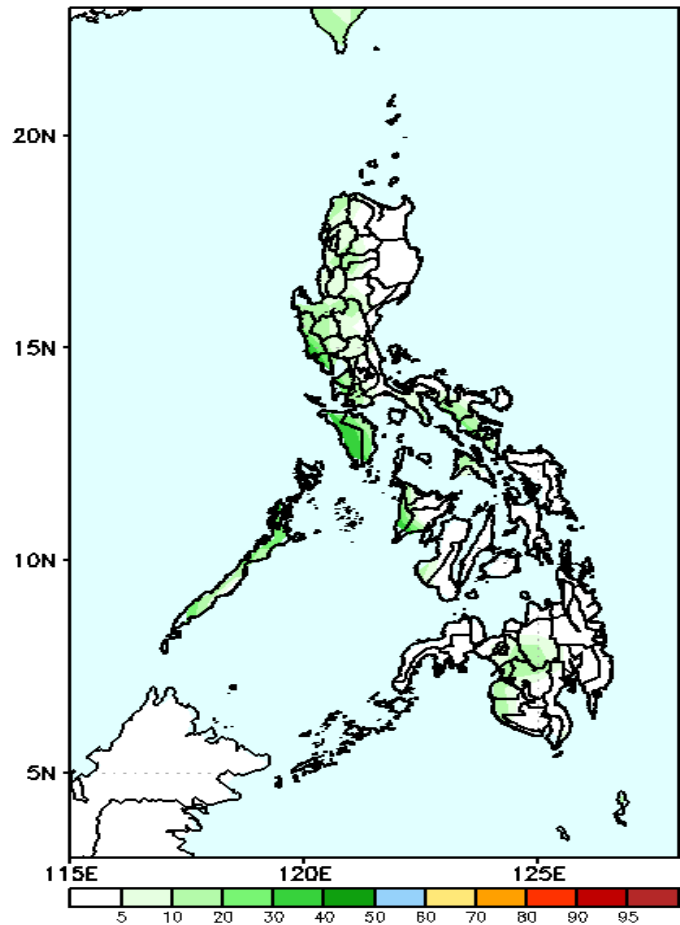
Week 2: Jun 27- Jul 03, 2022

GEFS Week-2 Exceedance Prob. > 100mm
Valid: 20220627 – 20220703



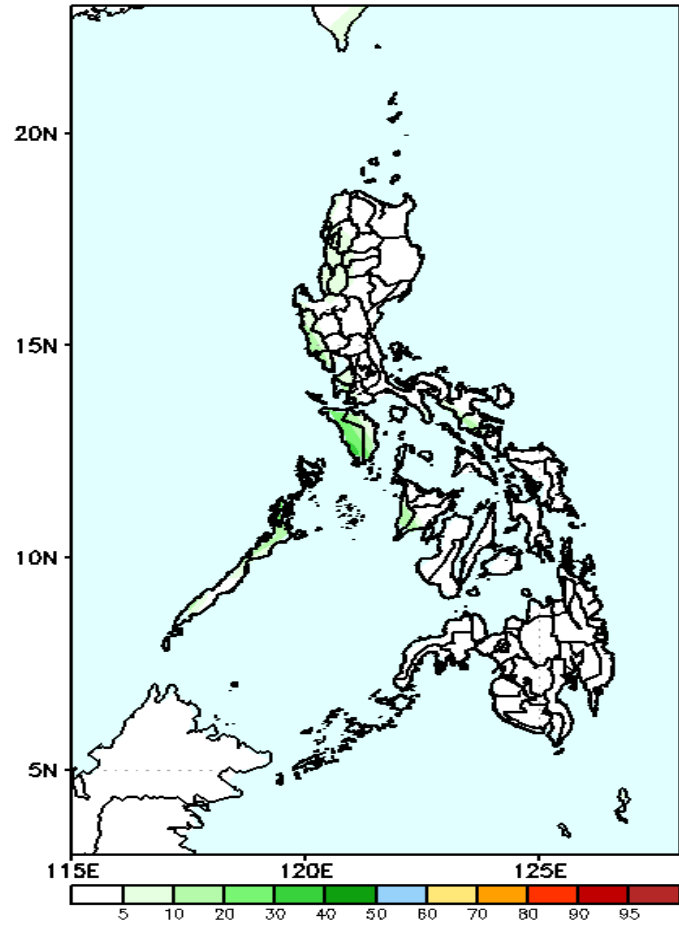
Low probability of rainfall to exceed 100mm in most parts of the country during the forecast period.

GEFS Week-2 Exceedance Prob. > 150mm
Valid: 20220627 – 20220703



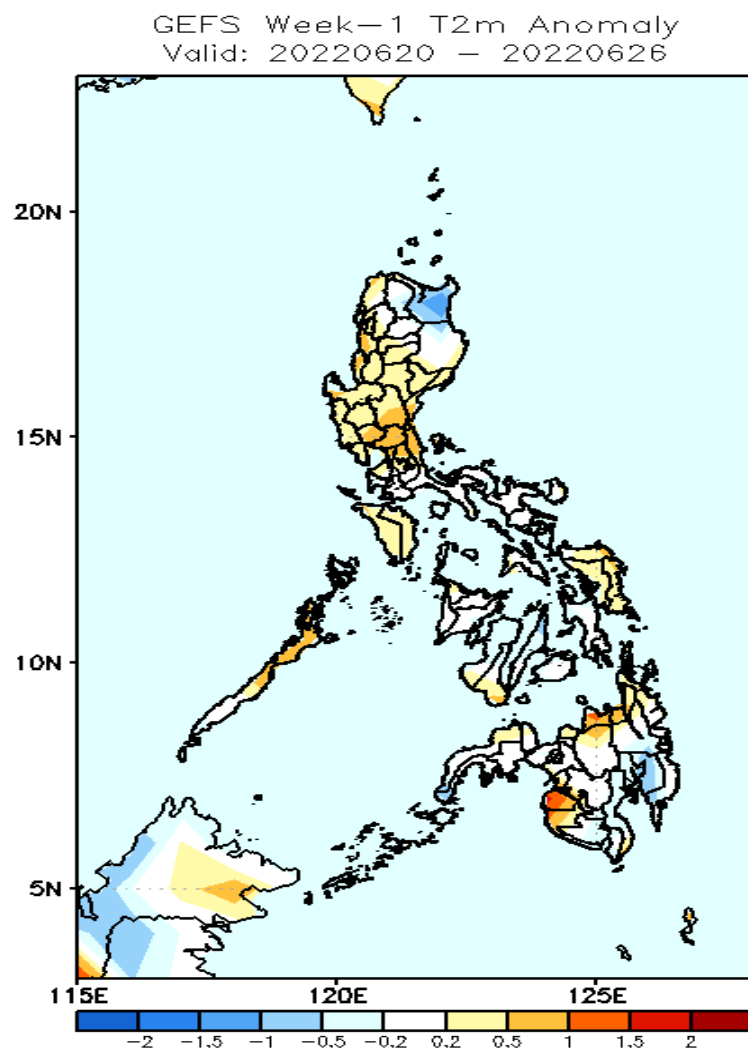
Low probability of rainfall to exceed 150mm in most parts of the country during the forecast period.

GEFS Week-2 Exceedance Prob. > 200mm
Valid: 20220627 – 20220703



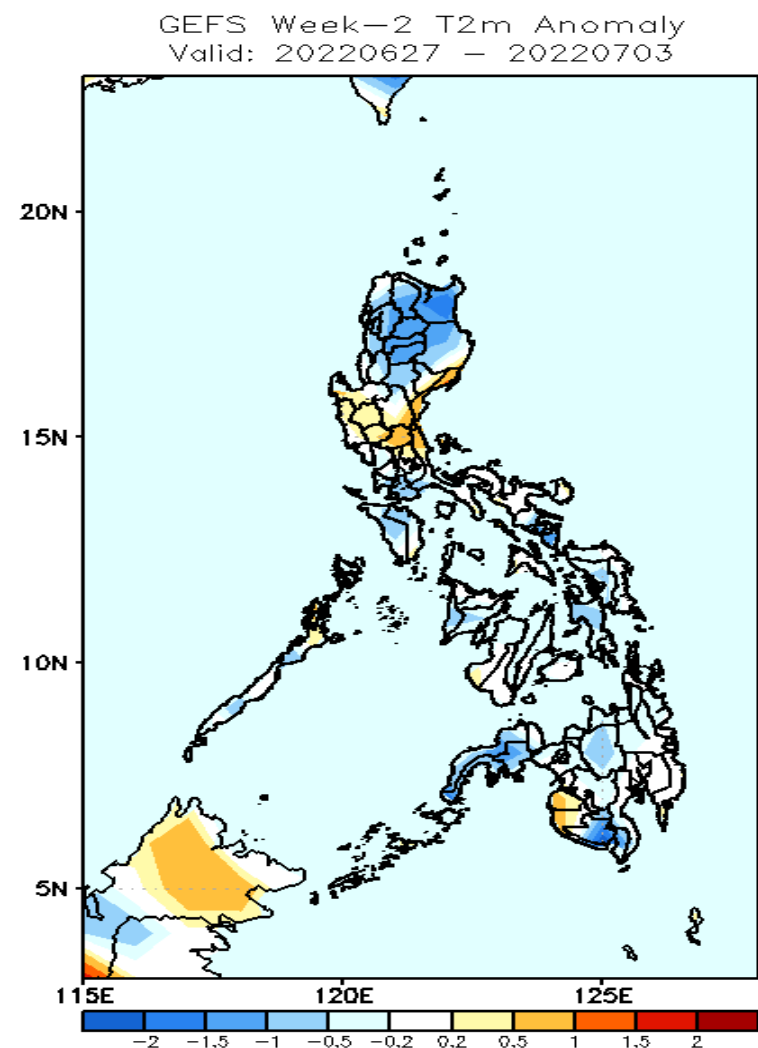
Low probability of rainfall to exceed 200mm in most parts of the country during the forecast period.

GEFS Week-1 & 2 Forecasts: T2m Anomaly



2m Temperature Week 1: Jun 20-26, 2022

Average to slightly warmer surface air temperature will likely experience in most parts of the country except in Apayao and Compostela Valley (slightly cooler) and Misamis Oriental and Maguindanao (warmer) during the forecast period.



2m Temperature Week 2: Jun 27-Jul 03, 2022

Slightly cooler to cooler surface air temperature will likely experience in most parts Ilocos & Cordillera Region, Cagayan Valley, Mindoro Leyte, Zamboanga Peninsula, Bukidnon and South Cotabato while warmer temperature in Central Luzon, Rizal, Sultan Kudarat and Maguindanao during the forecast period.