



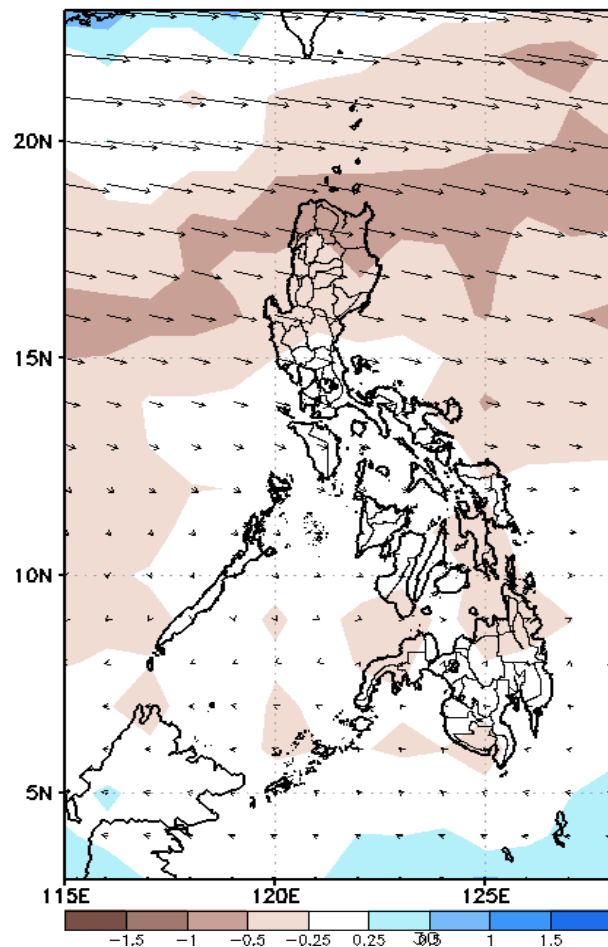
Week 1 & Week 2 Forecast for the Philippines using GEFS Model



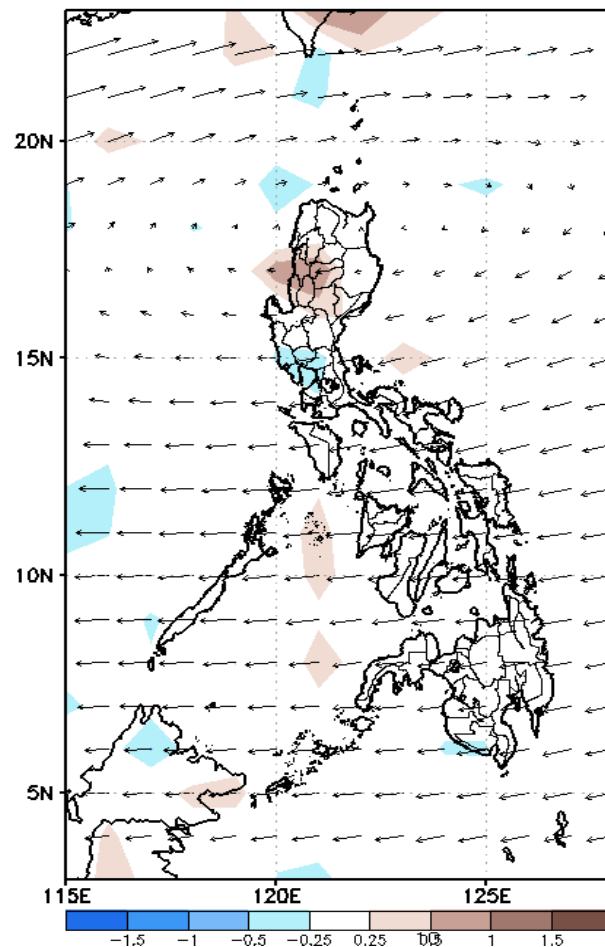
GEFS Week-1 Forecasts: Wind Anomaly Forecast

Week 1: Mar 20-26, 2023

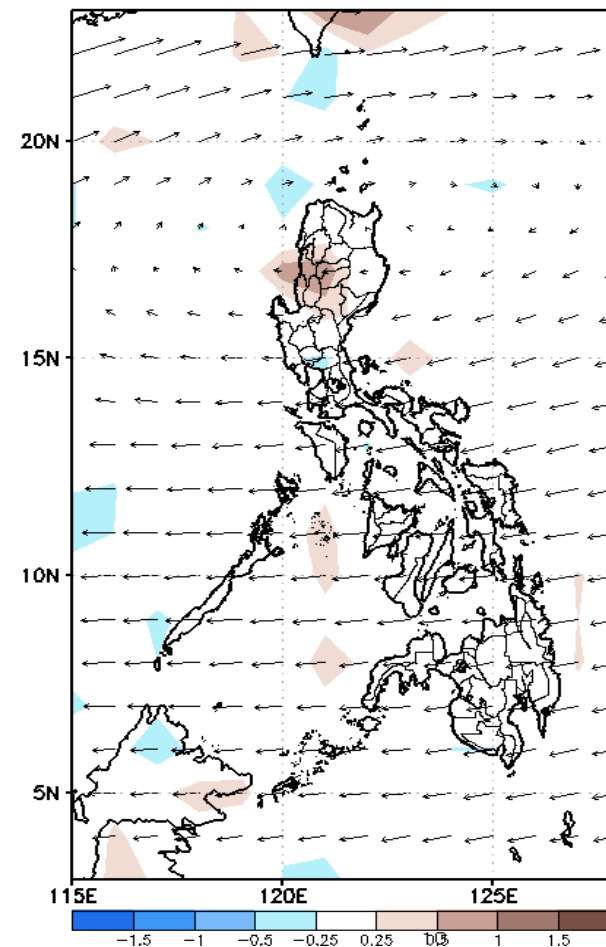
GEFS Week-1 200-hPa Divergence and Wind Anom
Valid: 20230320 - 20230326



GEFS Week-1 700-hPa Divergence and Wind Anom
Valid: 20230320 - 20230326



GEFS Week-1 850-hPa Divergence and Wind Anomaly
Valid: 20230320 - 20230326

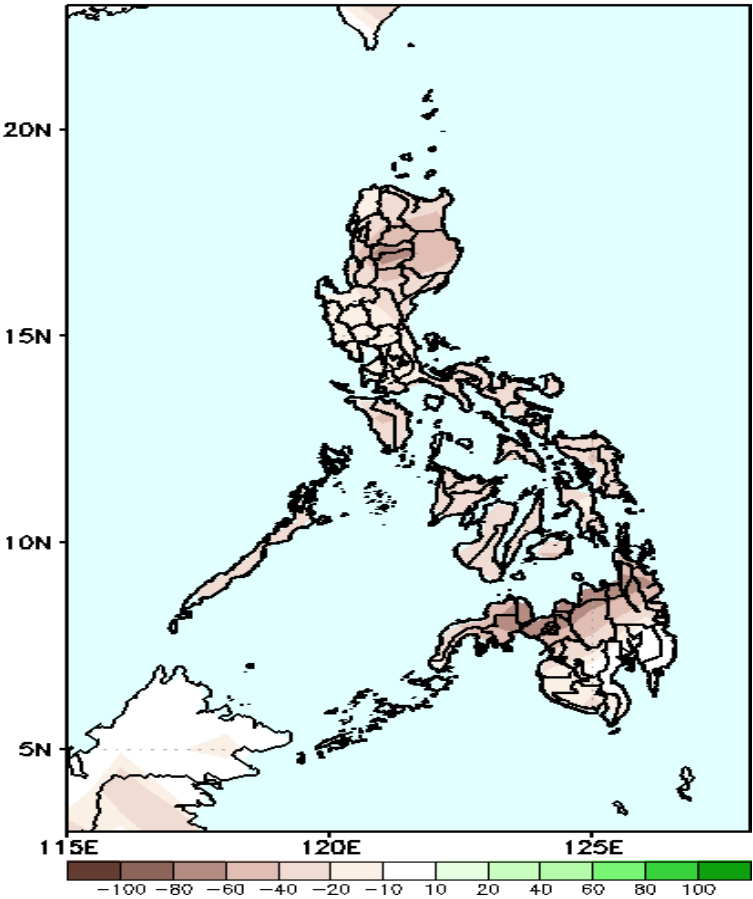


Easterlies is forecasted to affect most parts of the country during the forecast period.

Precipitation Anomaly and Exceedance Probability > 25/50 mm

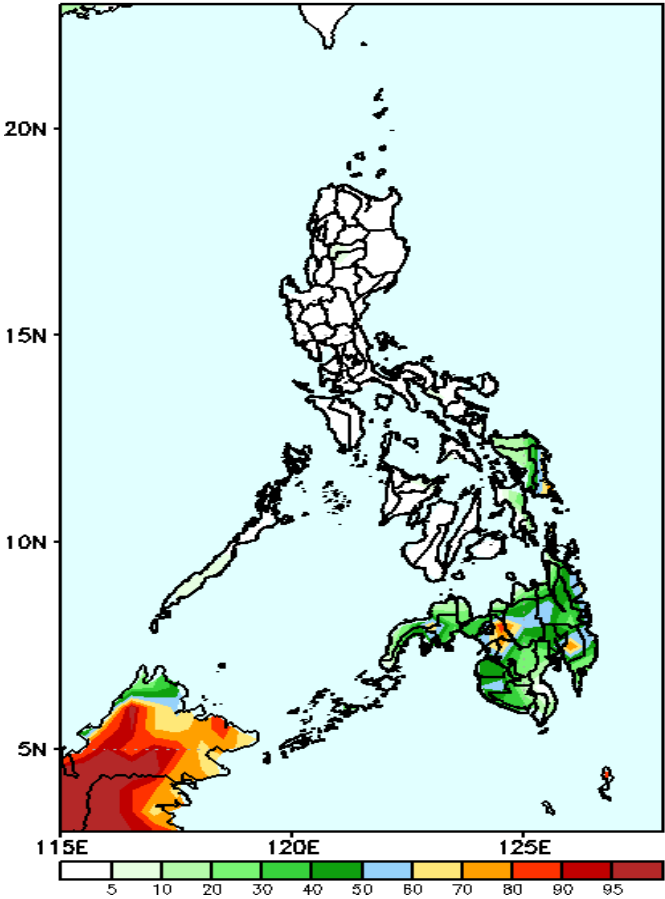
Week 1: Mar 20-26, 2023

GEFS Week-1 Precip Anomaly
Valid: 20230320 - 20230326



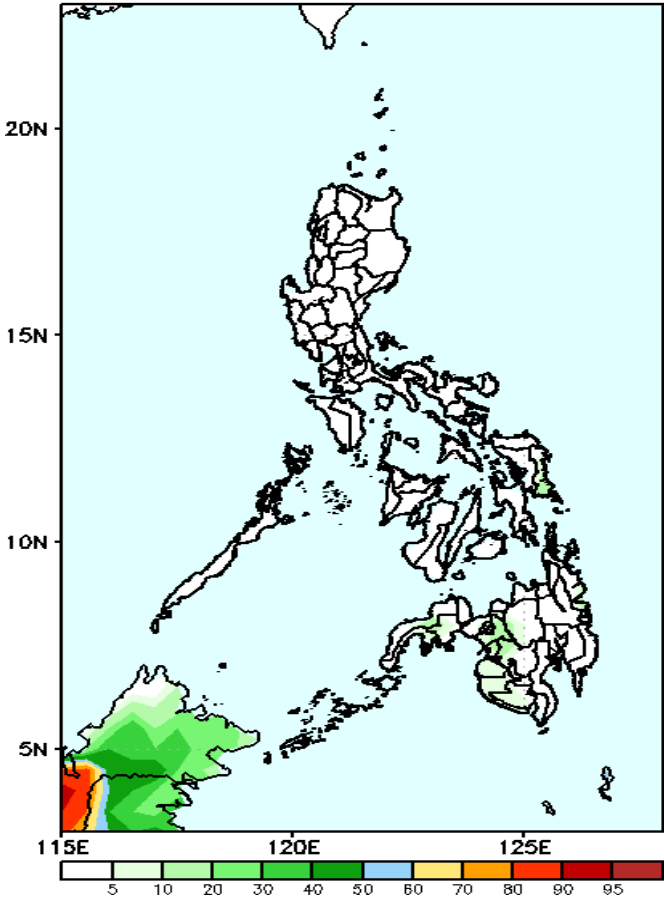
Rainfall deficit of 40-100mm is expected in most parts of the country during the forecast period.

GEFS Week-1 Exceedance Prob. > 25mm
Valid: 20230320 - 20230326



Moderate to high probability of rainfall exceeding 25mm in some areas of Mindanao while low chance over the rest of the country.

GEFS Week-1 Exceedance Prob. > 50mm
Valid: 20230320 - 20230326

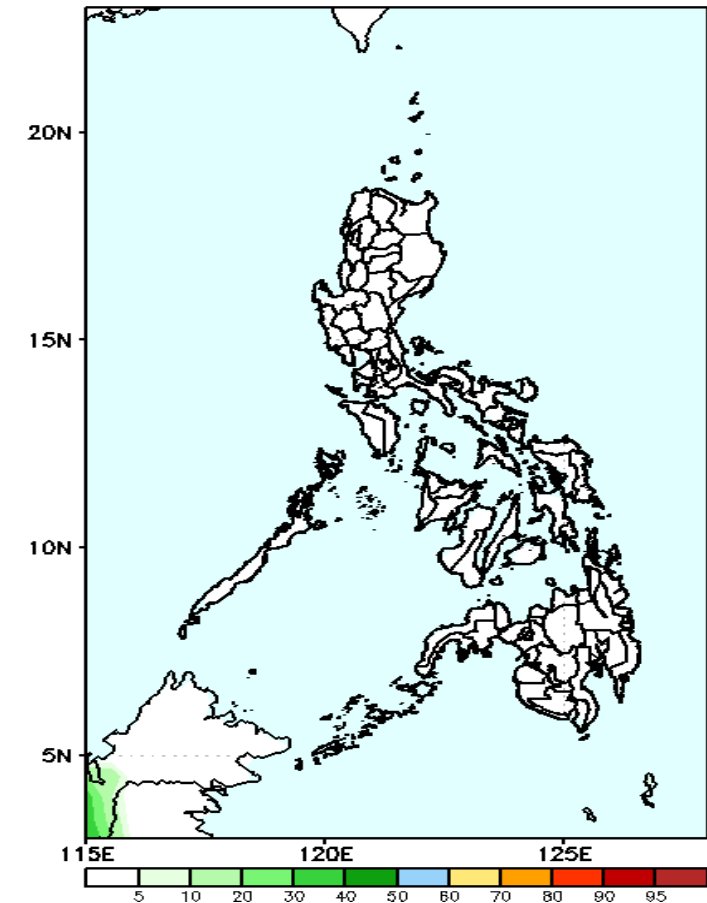


Low probability of rainfall exceeding 50mm across the country.

Exceedance Probability > 100/150/200 mm

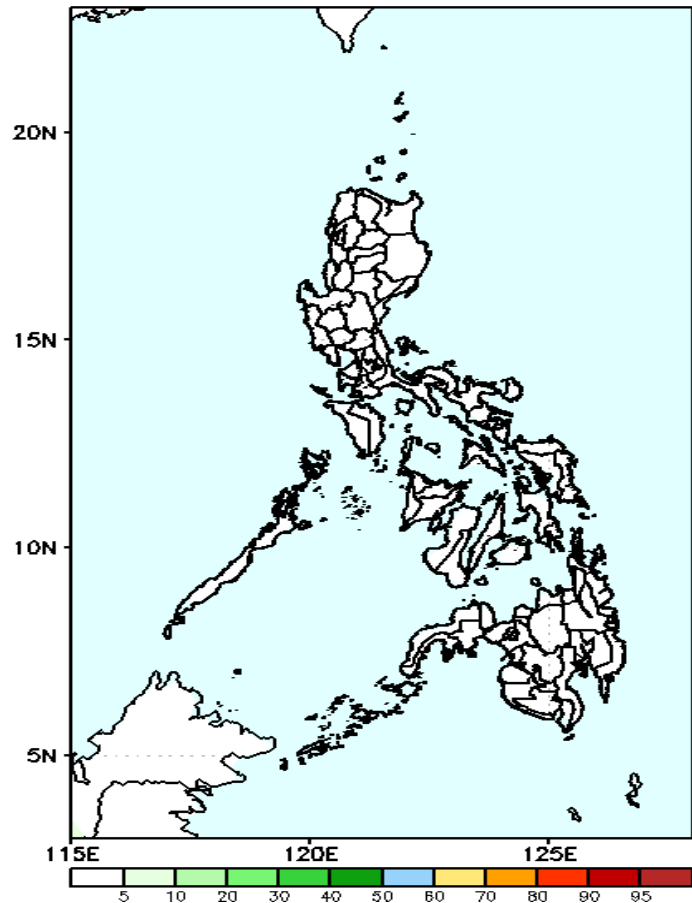
Week 1: Mar 20-26, 2023

GEFS Week-1 Exceedance Prob. > 100mm
Valid: 20230320 – 20230326



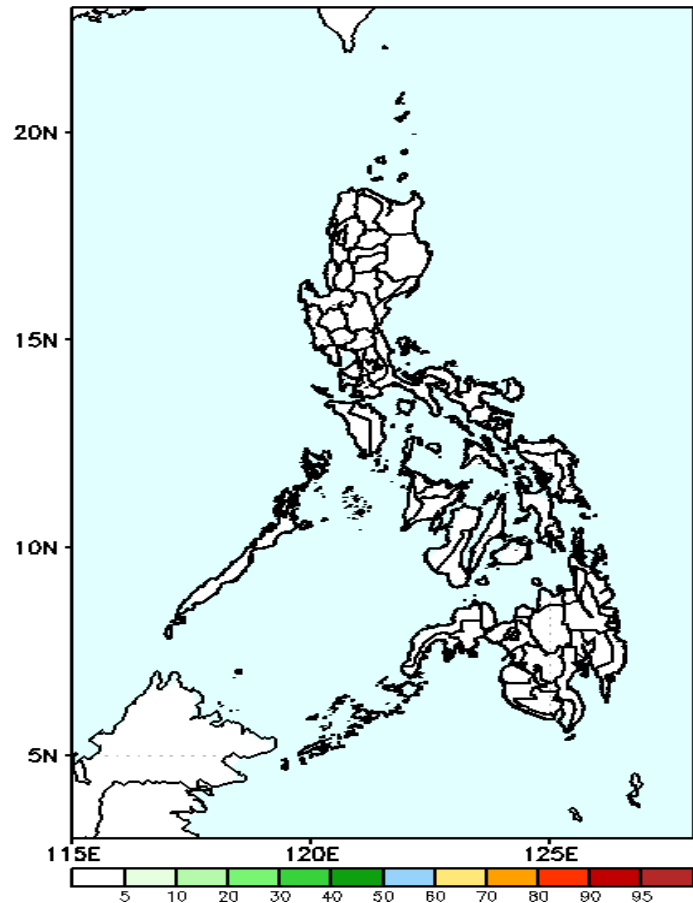
Low probability of rainfall to exceed 100mm in most parts of the country during the forecast period.

GEFS Week-1 Exceedance Prob. > 150mm
Valid: 20230320 – 20230326



Low probability of rainfall to exceed 150mm in most parts of the country during the forecast period.

GEFS Week-1 Exceedance Prob. > 200mm
Valid: 20230320 – 20230326

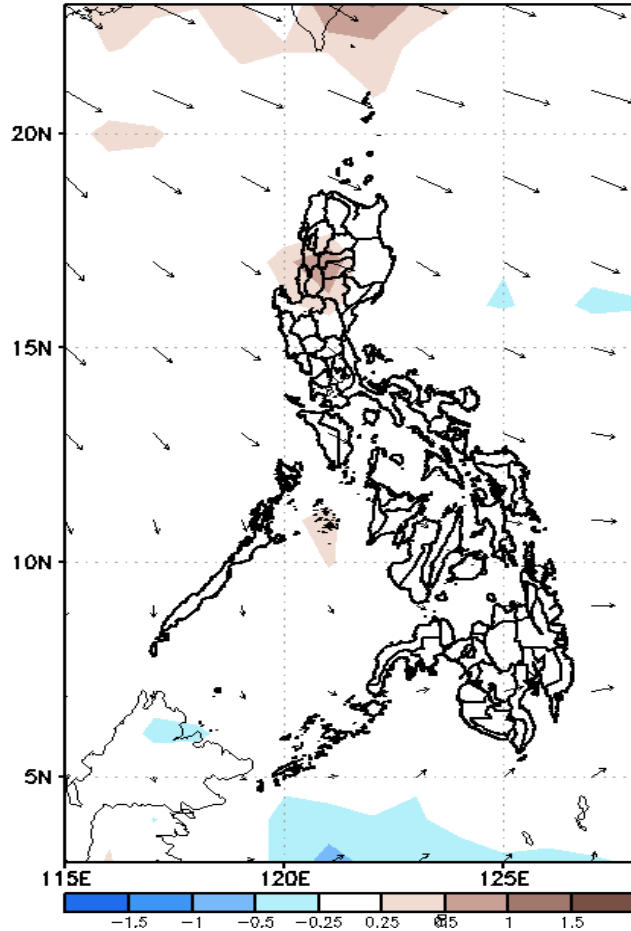


Low probability of rainfall to exceed 200mm in most parts of the country during the forecast period.

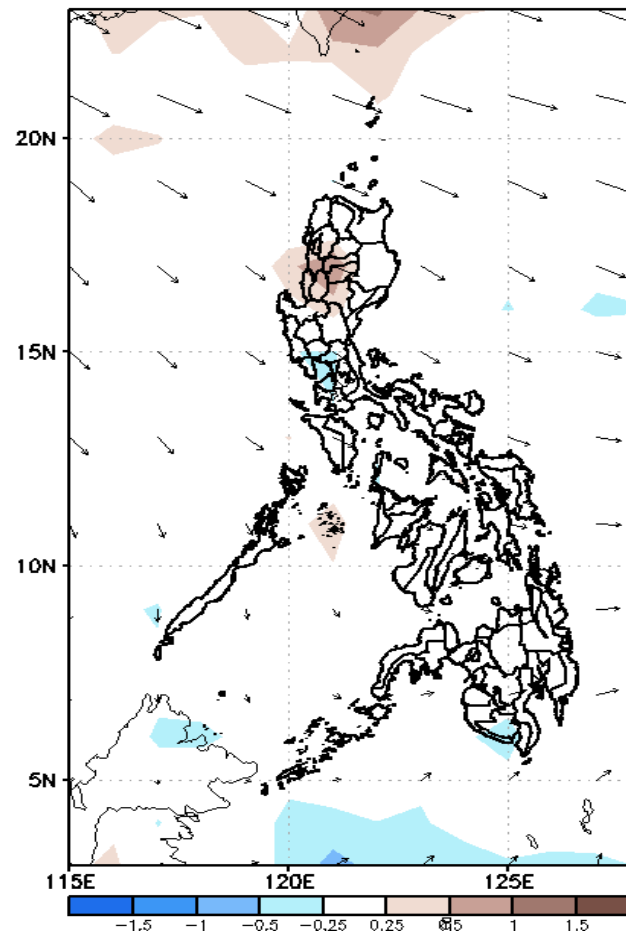
GEFS Week-2 Forecasts: Wind Anomaly Forecast

Week 2: Mar 27-Apr 02, 2023

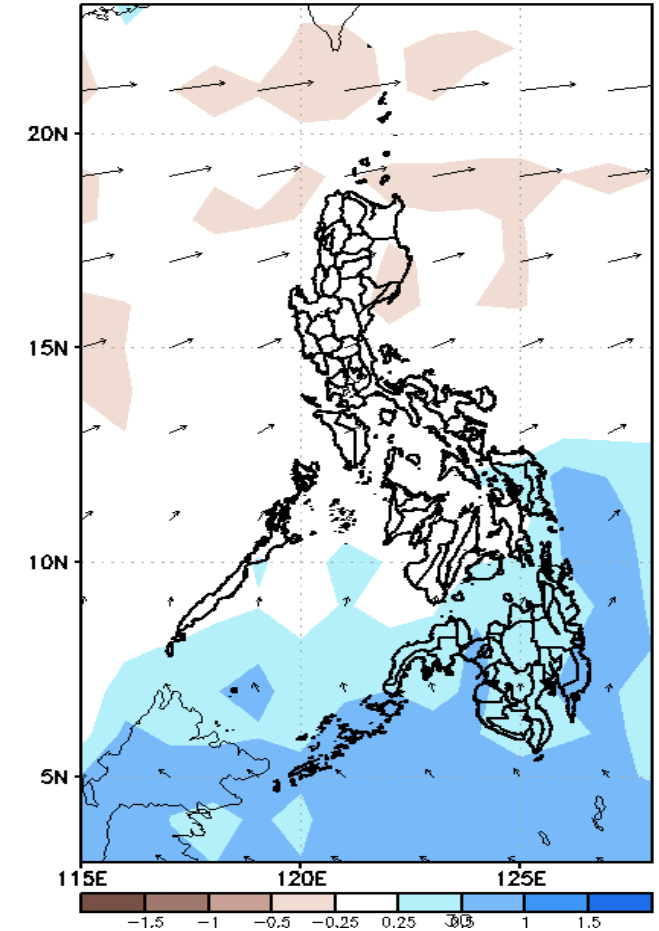
GEFS Week-2 850-hPa Divergence and Wind Anom
Valid: 20230327 - 20230402



GEFS Week-2 700-hPa Divergence and Wind Anom
Valid: 20230327 - 20230402



GEFS week-2 200-hPa Divergence and Wind Anom
Valid: 20230327 - 20230402

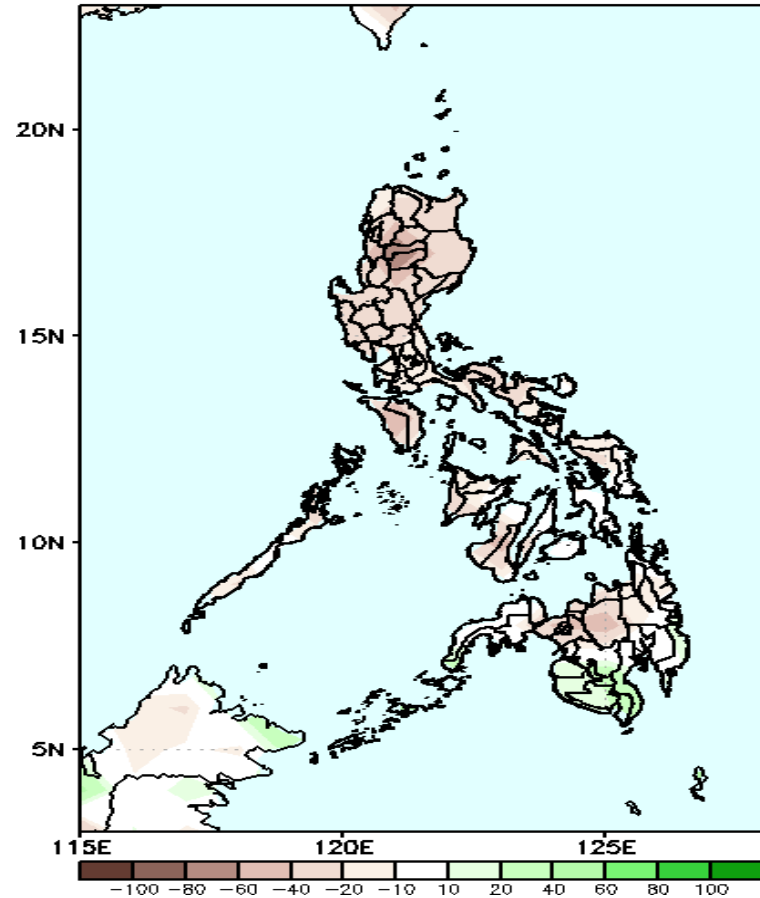


Easterlies is forecasted to affect most parts of the country during the forecast period.

Precipitation Anomaly and Exceedance Probability > 25/50 mm

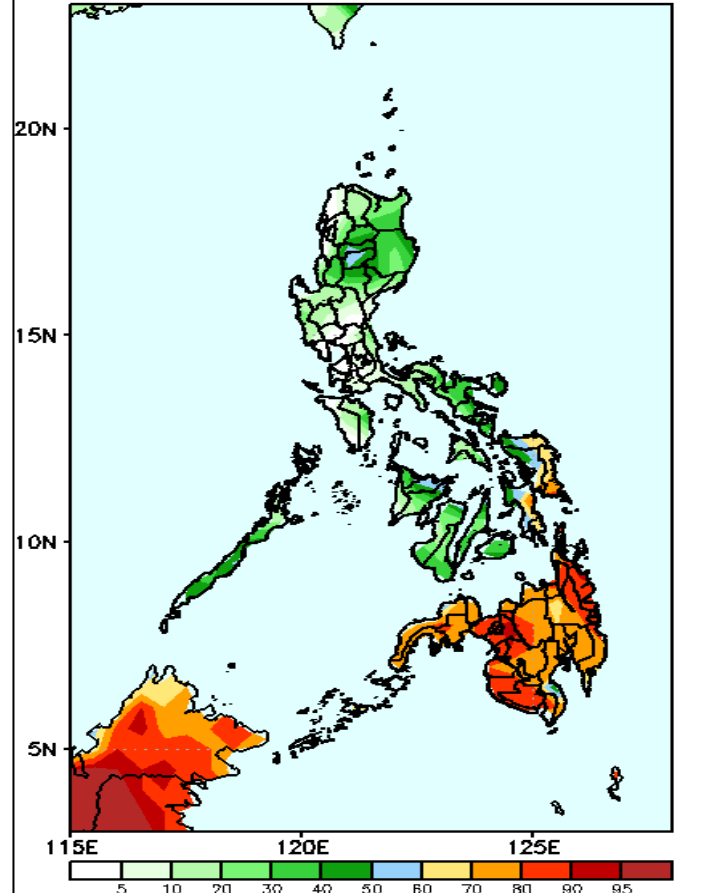
Week 2: Mar 27-Apr 02, 2023

GEFS Week-2 Precip Anomaly
Valid: 20230327 - 20230402



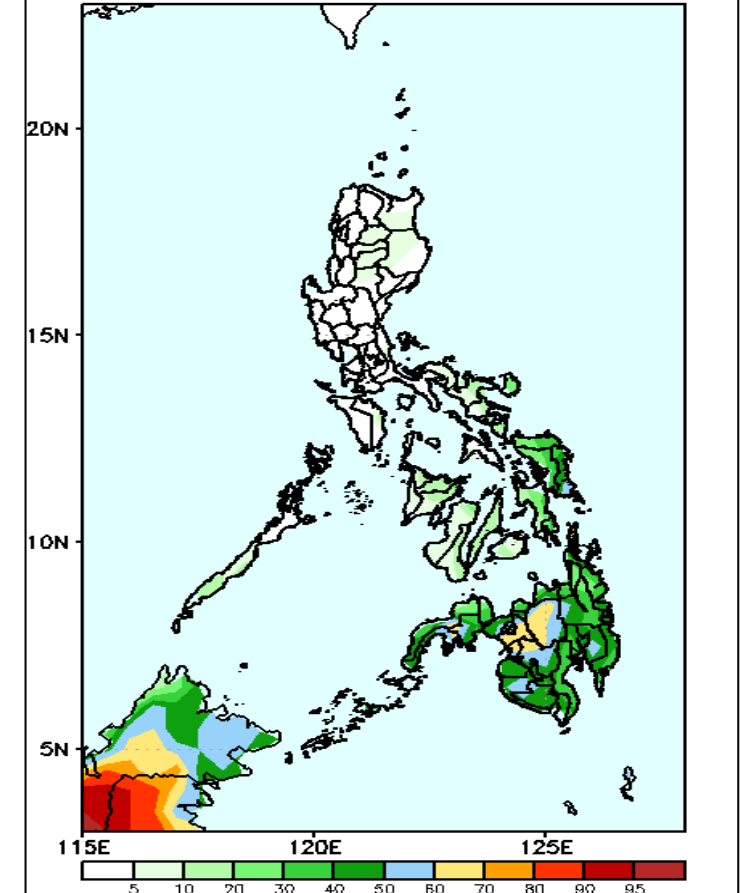
Rainfall deficit of 40-80mm is expected in most parts of the country except in southwestern parts of Mindanao where there is 20-40mm increase of rainfall during the forecast period.

GEFS Week-2 Exceedance Prob. > 25mm
Valid: 20230327 - 20230402



High to very high probability of rainfall exceeding 25mm in Mindanao and moderate to high probability in Eastern Visayas while low chance over the rest of the country.

GEFS Week-2 Exceedance Prob. > 50mm
Valid: 20230327 - 20230402

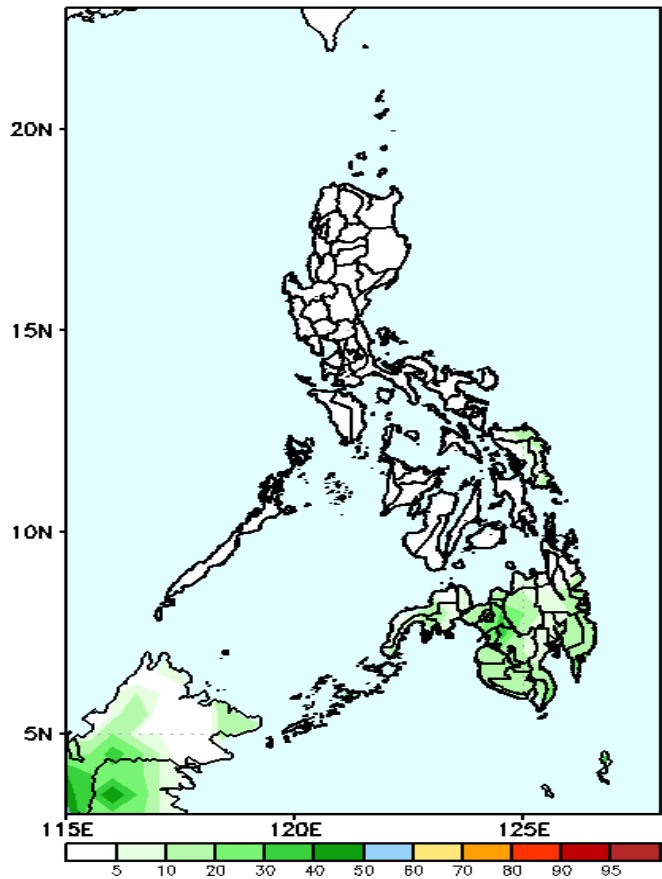


Moderate probability of rainfall exceeding 50mm in the Central part of Mindanao including some parts of Zamboanga peninsula while low chance over the rest of the country.

Exceedance Probability > 100/150/200 mm

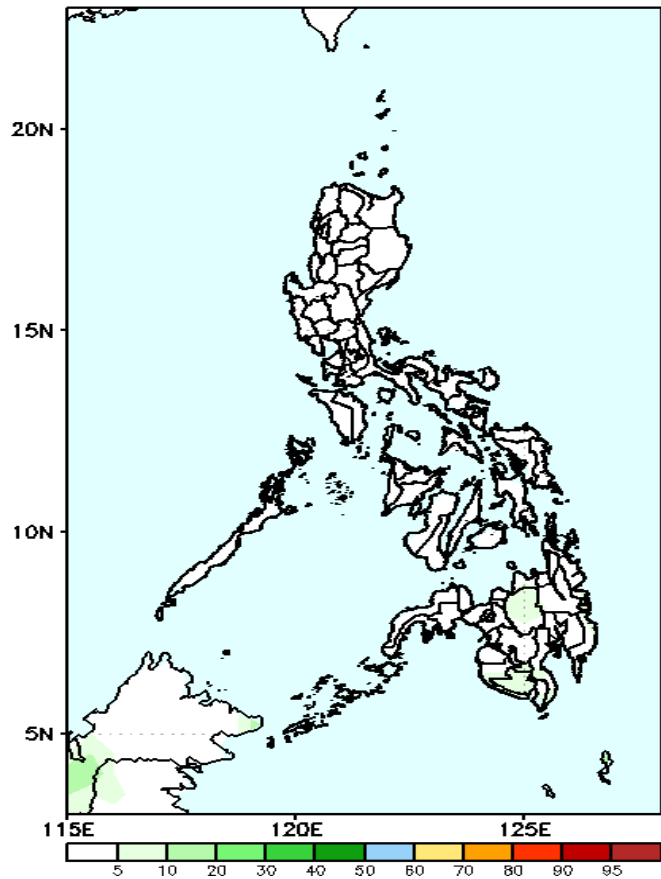
Week 2: Mar 27-Apr 02, 2023

GEFS Week-2 Exceedance Prob. > 100mm
Valid: 20230327 – 20230402



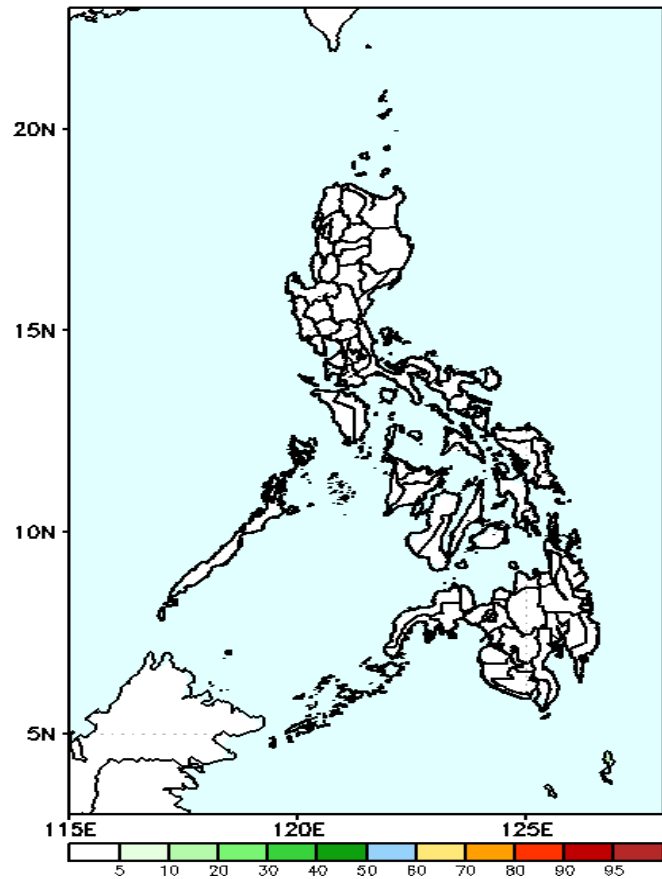
Low probability of rainfall to exceed 100mm in most parts of the country during the forecast period.

GEFS Week-2 Exceedance Prob. > 150mm
Valid: 20230327 – 20230402



Low probability of rainfall to exceed 150mm in most parts of the country during the forecast period.

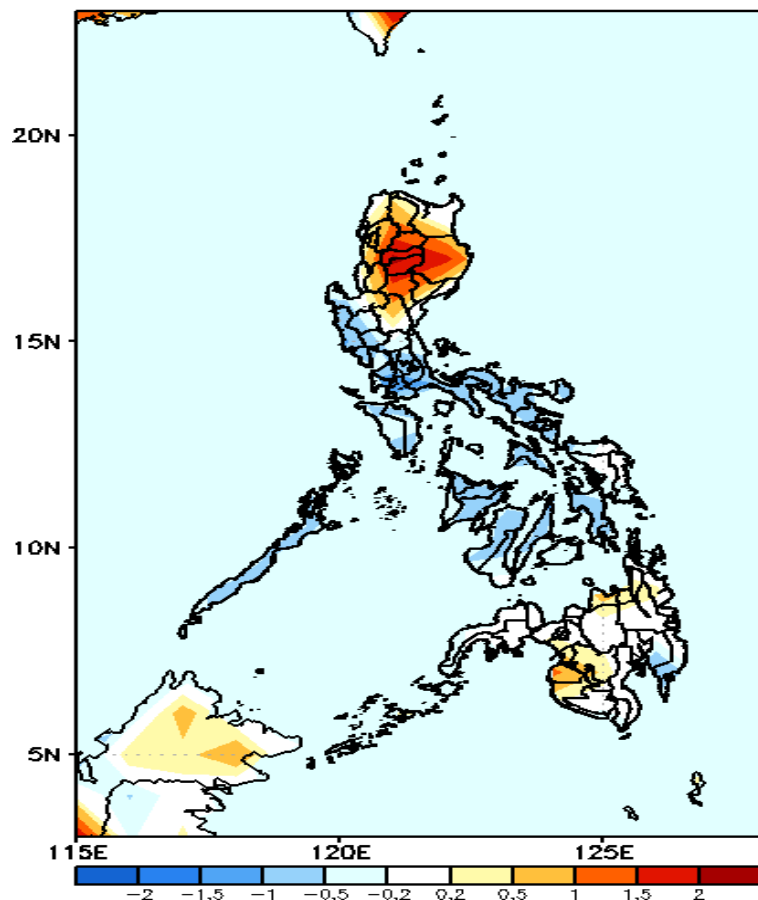
GEFS Week-2 Exceedance Prob. > 200mm
Valid: 20230327 – 20230402



Low probability of rainfall to exceed 200mm in most parts of the country during the forecast period.

GEFS Week-1 & 2 Forecasts: T2m Anomaly

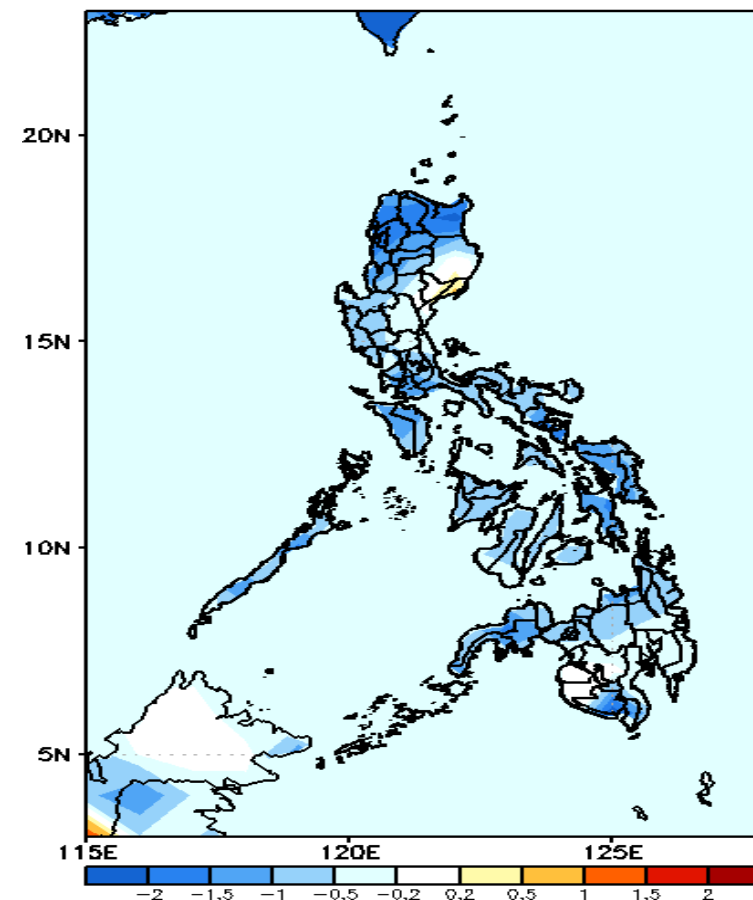
GEFS Week-1 T2m Anomaly
Valid: 20230320 – 20230326



2m Temperature Week 1: Mar 20-26, 2023

Warmer than average surface air temperature will likely experience in most parts of Ilocos Region, CAR, Cagayan Valley and Maguindanao; slightly cooler than average surface air temperature in most parts of Central & Southern Luzon and Visayas while average to slightly warmer is expected in Eastern Visayas and most of Mindanao during the forecast period.

GEFS Week-2 T2m Anomaly
Valid: 20230327 – 20230402



2m Temperature Week 2: Mar 27-Apr 02, 2023

Average to cooler than average surface air temperature will likely experience in most parts of the country during the forecast period.