



# Week 1 & Week 2 Forecast for the Philippines using GEFS Model



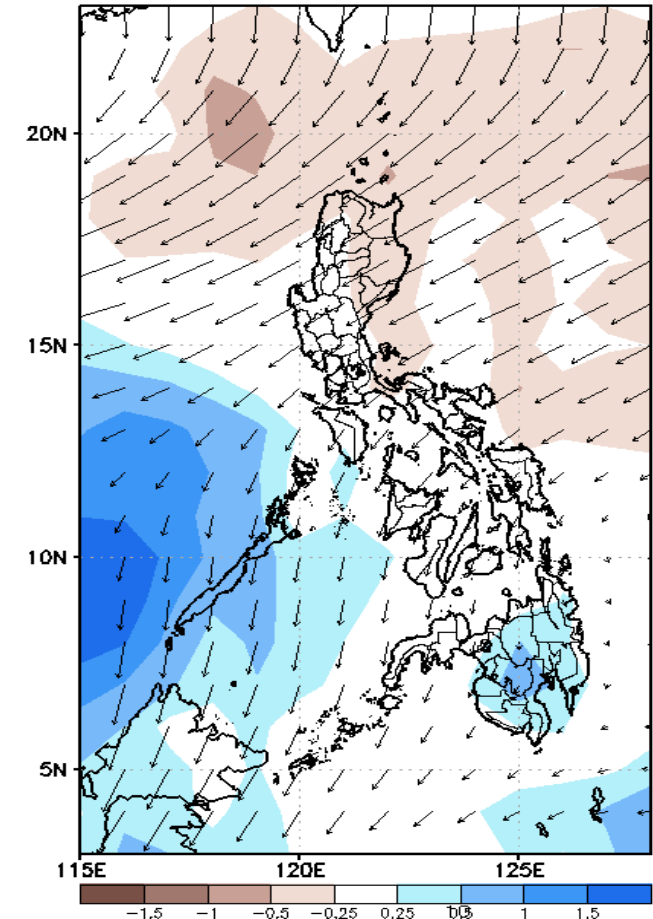
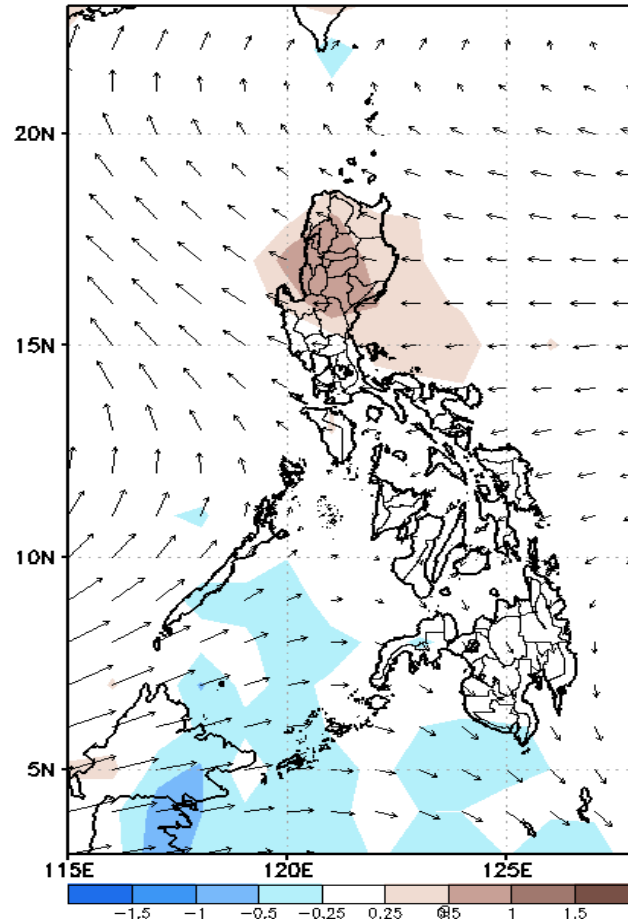
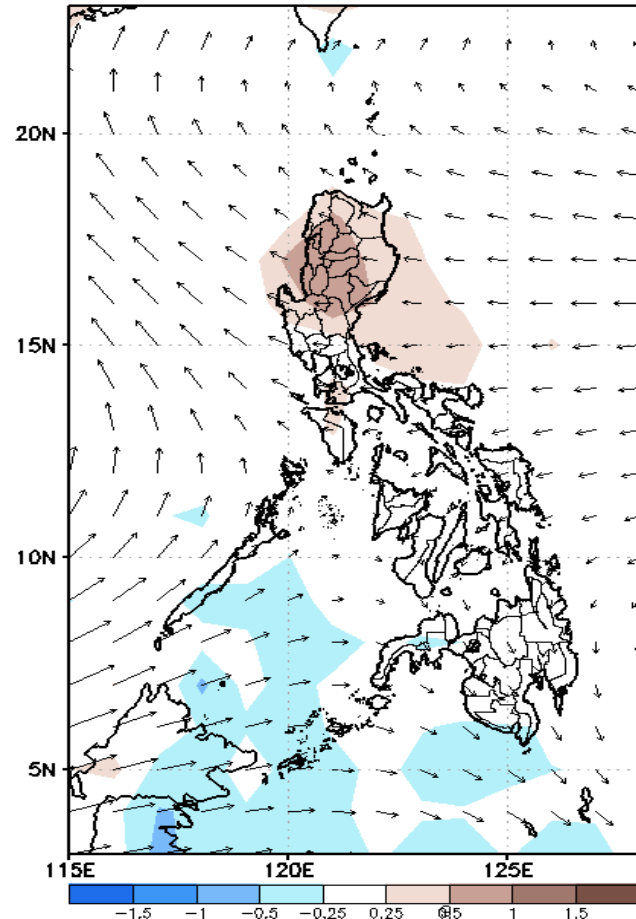
# GEFS Week-1 Forecasts: Divergence & Wind Anomaly

**Week 1: May 20-26, 2021**

GEFS Week-1 850-hPa Divergence and Wind Anom  
Valid: 20210520 - 20210526

GEFS Week-1 700-hPa Divergence and Wind Anom  
Valid: 20210520 - 20210526

GEFS Week-1 200-hPa Divergence and Wind Anom  
Valid: 20210520 - 20210526



Upper and low level Divergence suggest likelihood of precipitation in most parts of most parts of Mindanao. Southwest windflow affecting Palawan and Mindanao. Easterlies affecting most parts of the country attributing to warmer temperatures and higher heat index during the forecast period.

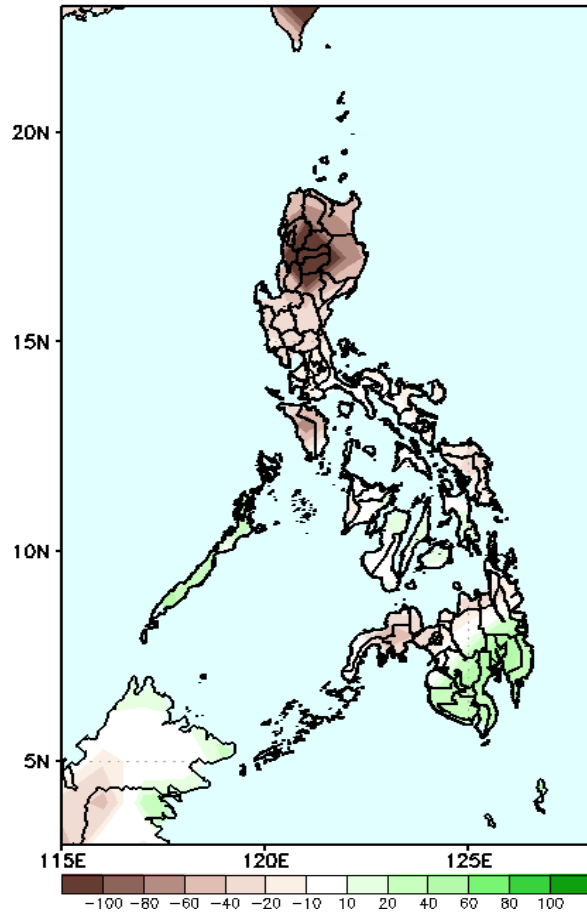
Mayong  
AGASA



# Precipitation Anomaly and Exceedance Probability > 25/50 mm

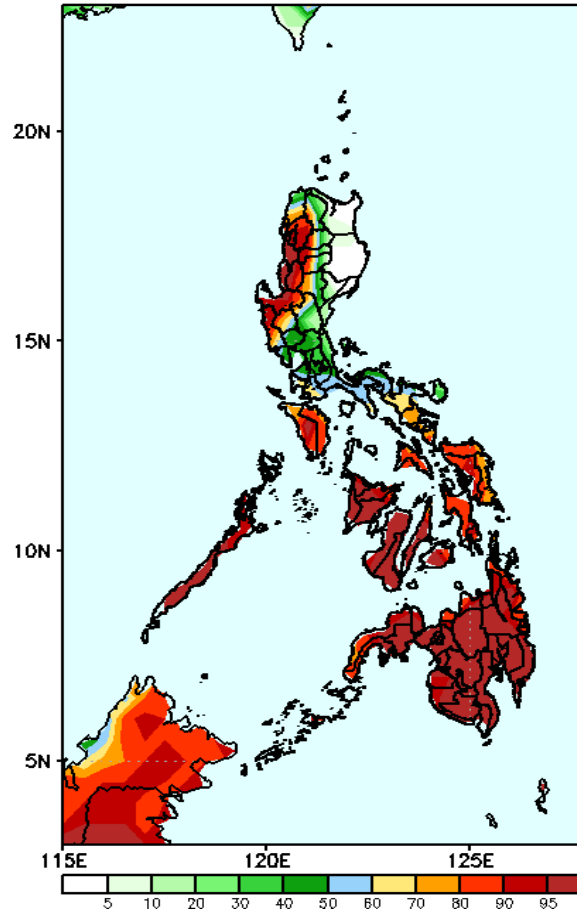
**Week 1: May 17-23, 2021**

GEFS Week-1 Precip. Anomaly  
Valid: 20210520 - 20210526



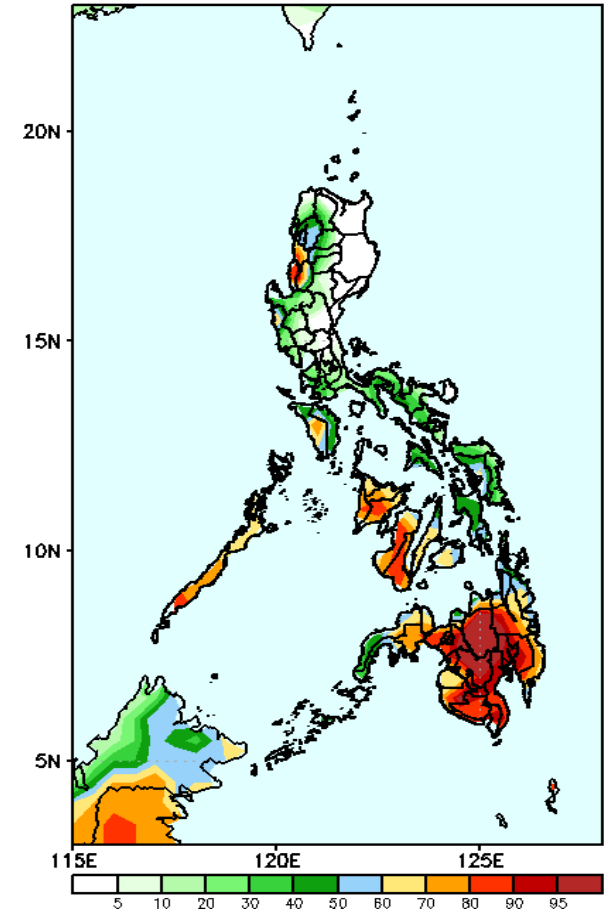
Rainfall deficit of 60-100mm is expected in most parts of the country (specially in Cordillera & Ilocos Region) except in the southern half of Mindanao where 40-80mm increase of rainfall is more likely.

GEFS Week-1 Exceedance Prob. > 25mm  
Valid: 20210520 - 20210526



High probability of rainfall to exceed 25mm in some parts of western Luzon, Bicol region and most parts of Visayas and Mindanao while less likely for the rest of the country during the forecast period.

GEFS Week-1 Exceedance Prob. > 50mm  
Valid: 20210520 - 20210526

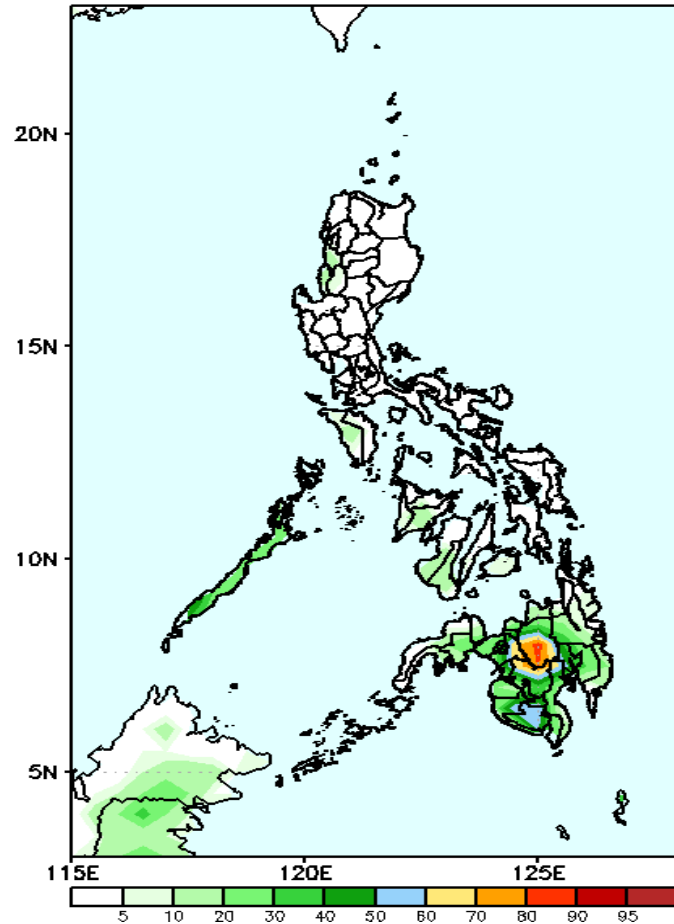


High probability of rainfall to exceed 50mm in La Union, Ilocos Sur, Palawan, Occ. Mindoro, western Visayas and Mindanao while less likely for the rest of the country during the forecast period.

# Exceedance Probability > 100/150/200 mm

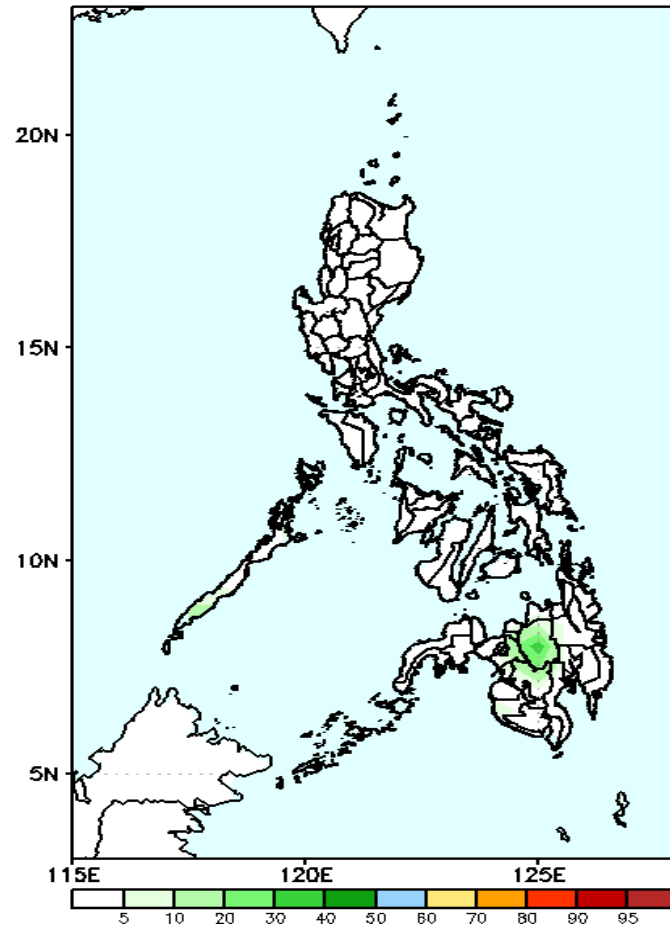
**Week 1: May 17-23, 2021**

GEFS Week-1 Exceedance Prob. > 100mm  
Valid: 20210520 – 20210526



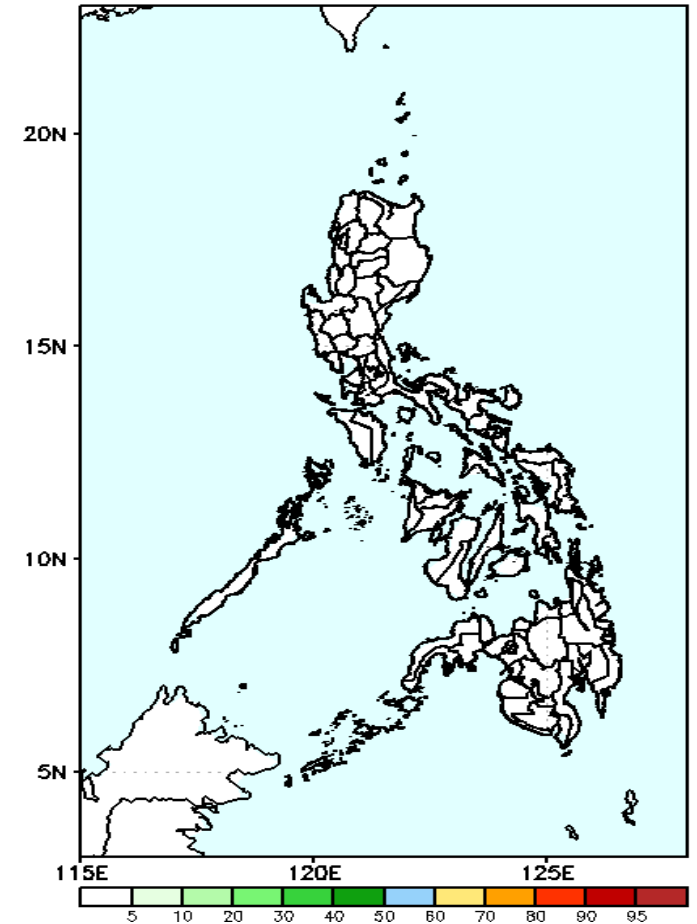
70-95% probability of rainfall to exceed 100mm in Bukidnon and Lanao del Sur while less likely for the remaining parts of the country during the forecast period.

GEFS Week-1 Exceedance Prob. > 150mm  
Valid: 20210520 – 20210526



Less probability of rainfall to exceed 150mm in most parts of the country during the forecast period.

GEFS Week-1 Exceedance Prob. > 200mm  
Valid: 20210520 – 20210526



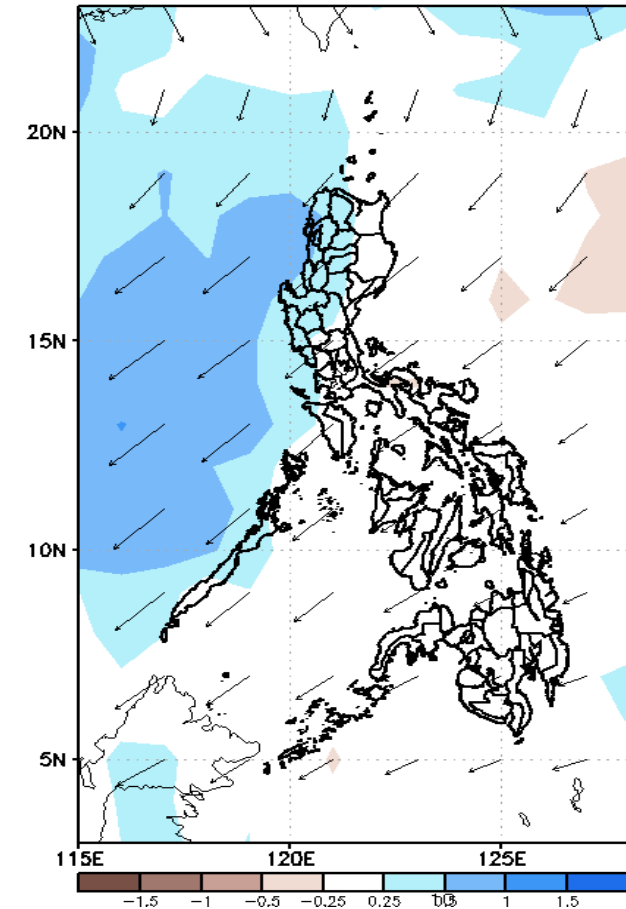
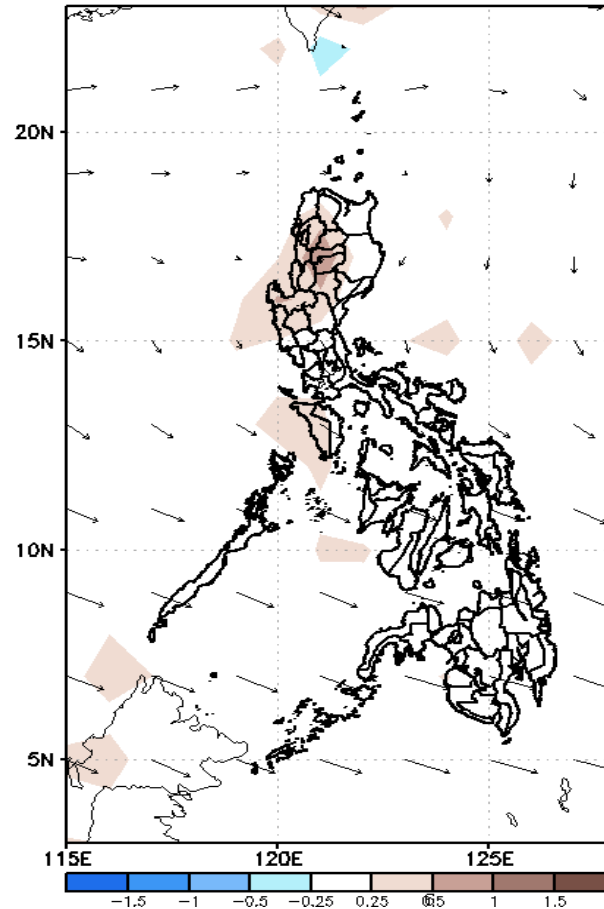
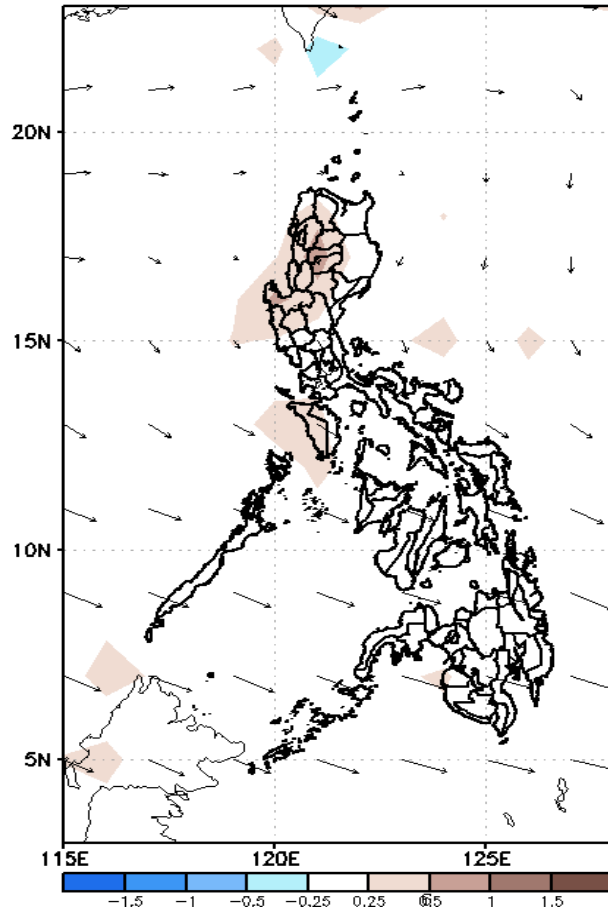
Less probability of rainfall to exceed 200mm in most parts of the country during the forecast period.



# GEFS Week-2 Forecasts: Divergence & Wind Anomaly

**Week 2: May 27 – June 02, 2021**

GEFS Week-2 850-hPa Divergence and Wind Anom  
Valid: 20210527 – 20210602

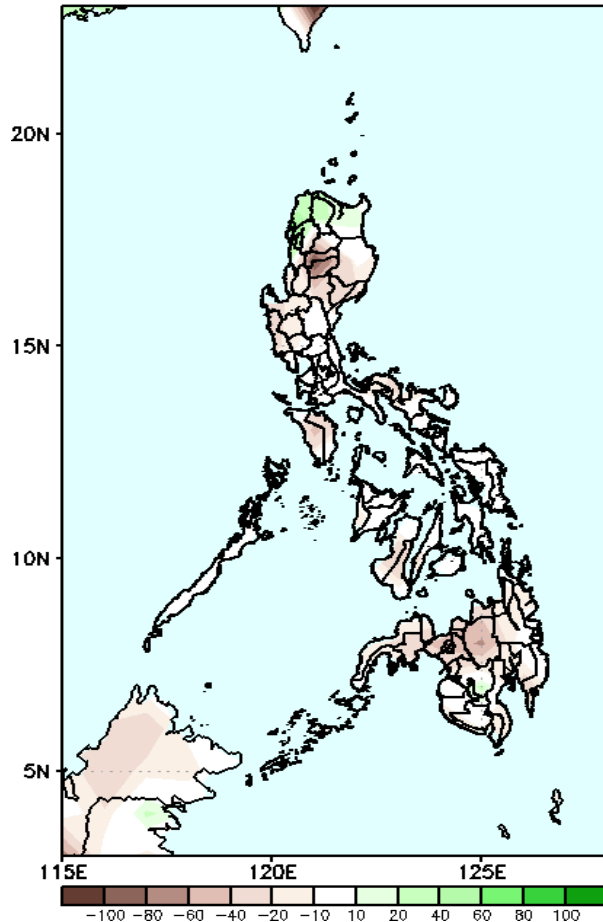


Upper and low level Divergence suggest likelihood of precipitation in western sections of Luzon. Southwest windflow affecting western sections of Luzon. Easterlies affecting the remaining parts of the country attributing to warmer temperatures and higher heat index during the forecast period.

# Precipitation Anomaly and Exceedance Probability > 25/50 mm

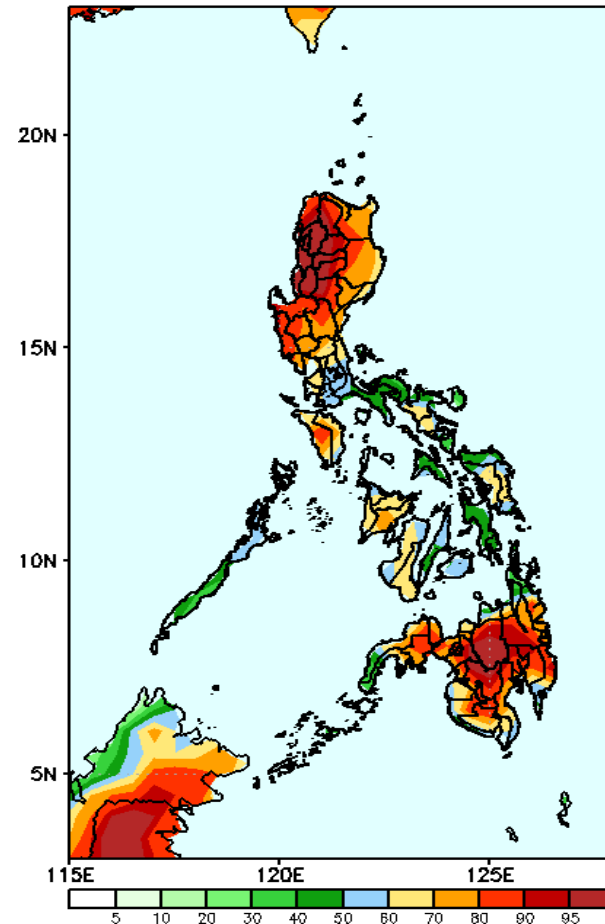
**Week 2: May 27 – June 02, 2021**

GEFS Week-2 Precip Anomaly  
Valid: 20210527 – 20210602



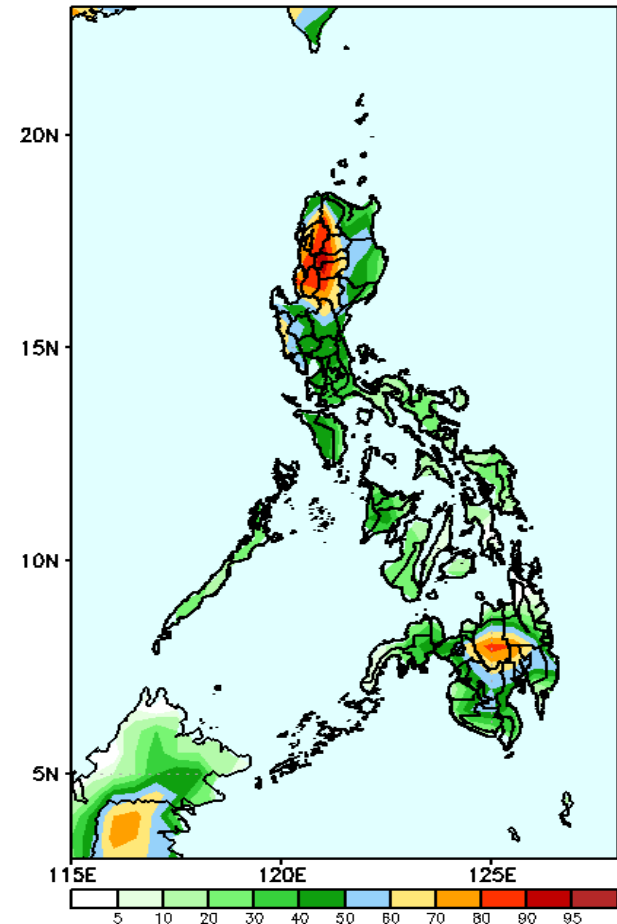
Rainfall deficit of 40-80mm is expected in most parts of the country except in the Ilocos Norte, Apayao and Cagayan where 20-60mm increase of rainfall is more likely.

GEFS Week-2 Exceedance Prob. > 25mm  
Valid: 20210527 – 20210602



High probability of rainfall to exceed 25mm in most parts of Luzon, western Visayas and Mindanao while less likely for the rest of the country during the forecast period.

GEFS Week-2 Exceedance Prob. > 50mm  
Valid: 20210527 – 20210602



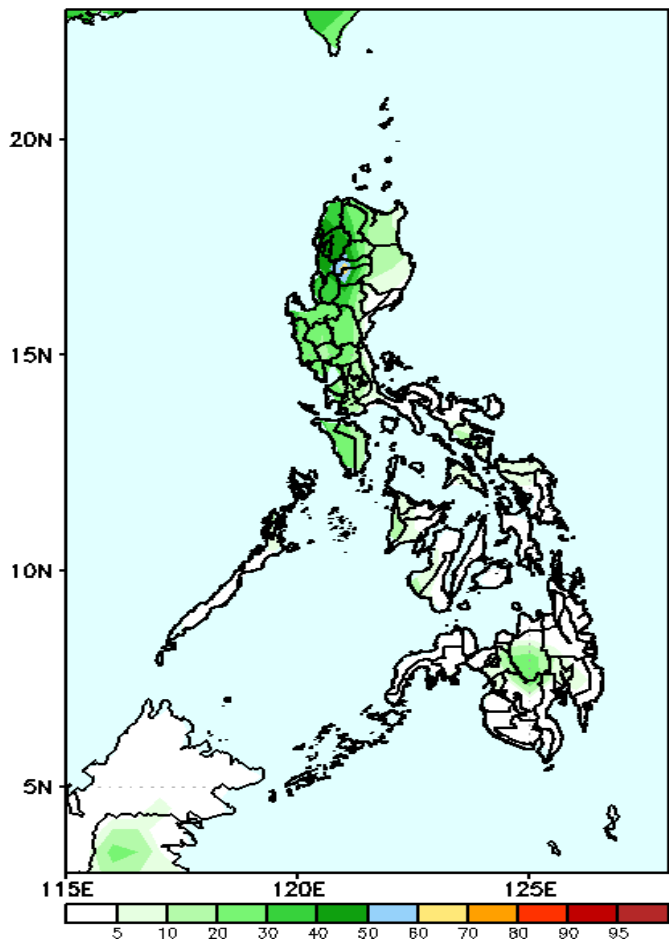
High probability of rainfall to exceed 50mm in most parts of Cordillera & Ilocos Region, La Union and Bukidnon while less likely for the rest of the country during the forecast period.



# Exceedance Probability > 100/150/200 mm

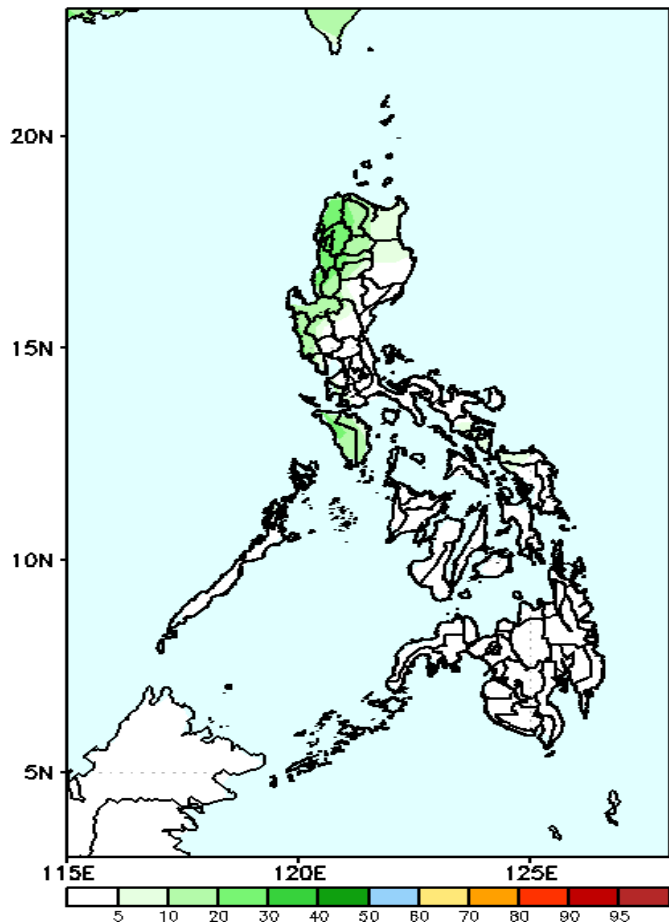
Week 2: May 27 – June 02, 2021

GEFS Week-2 Exceedance Prob. > 100mm  
Valid: 20210527 – 20210602



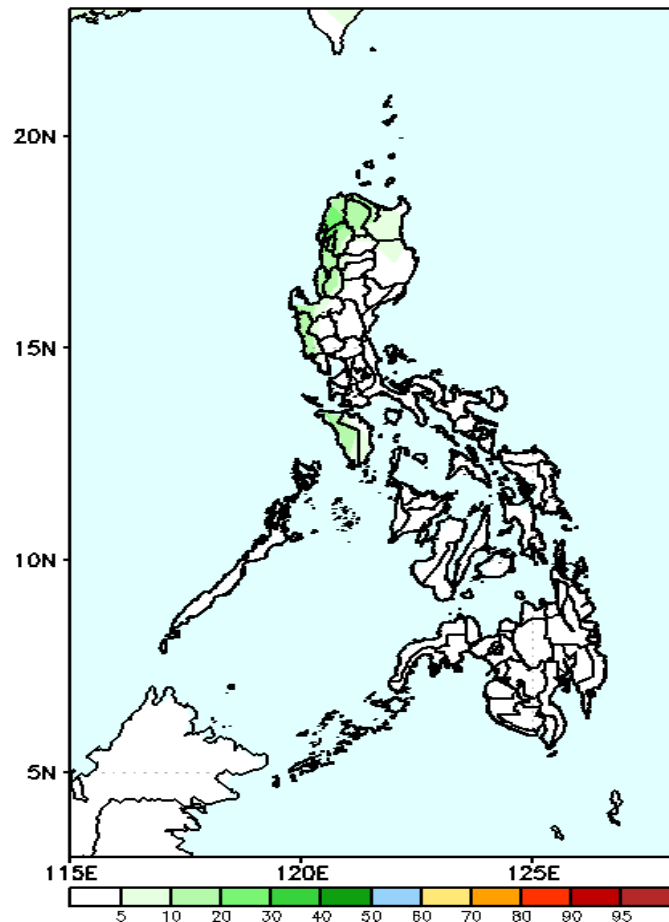
Less probability of rainfall to exceed 100mm in most parts of the country during the forecast period.

GEFS Week-2 Exceedance Prob. > 150mm  
Valid: 20210527 – 20210602



Less probability of rainfall to exceed 150mm in most parts of the country during the forecast period.

GEFS Week-2 Exceedance Prob. > 200mm  
Valid: 20210527 – 20210602

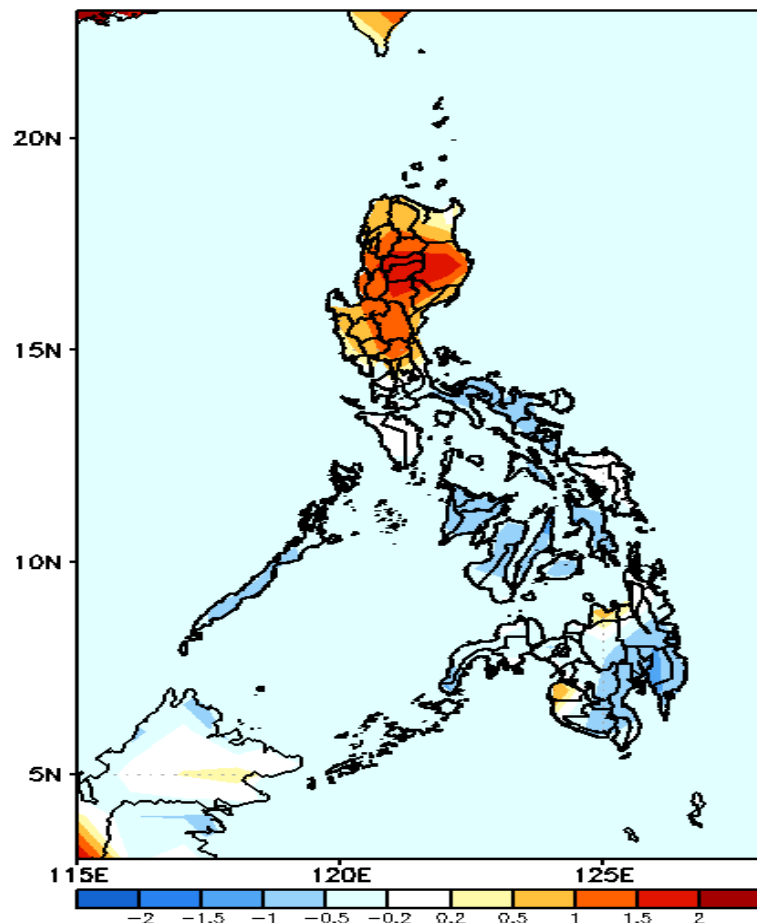


Less probability of rainfall to exceed 200mm in most parts of the country during the forecast period.



# GEFS Week-1 & 2 Forecasts: T2m Anomaly

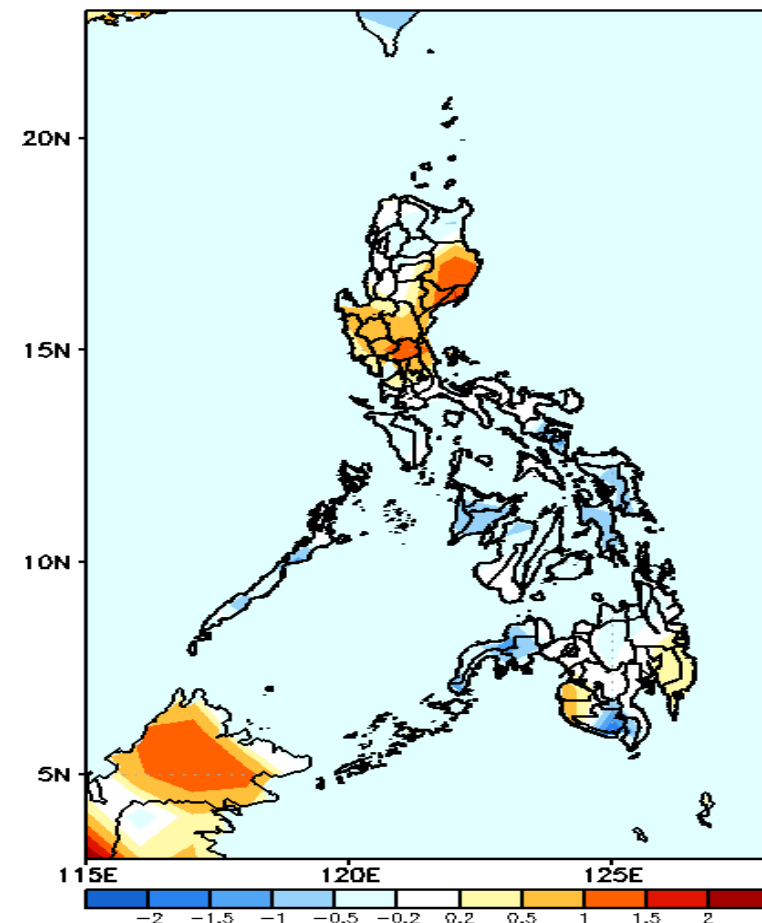
GEFS Week-1 T2m Anomaly  
Valid: 20210520 – 20210526



## 2m Temperature Week 1: May 20-26, 2021

Warmer than average surface air temperature will likely experience in most parts of Luzon while slightly cooler to cooler than average temperature for the rest of the country during the forecast period.

GEFS Week-2 T2m Anomaly  
Valid: 20210527 – 20210602



## 2m Temperature Week 2: May 27 – June 02, 2021

Slightly warmer to warmer than average surface air temperature will likely experience in most parts of Cagayan valley, Aurora, Nueva Ecija, Maguindanao, Sultan Kudarat and Davao Region while average to slightly cooler than average temperature for the rest of the country during the forecast period.