



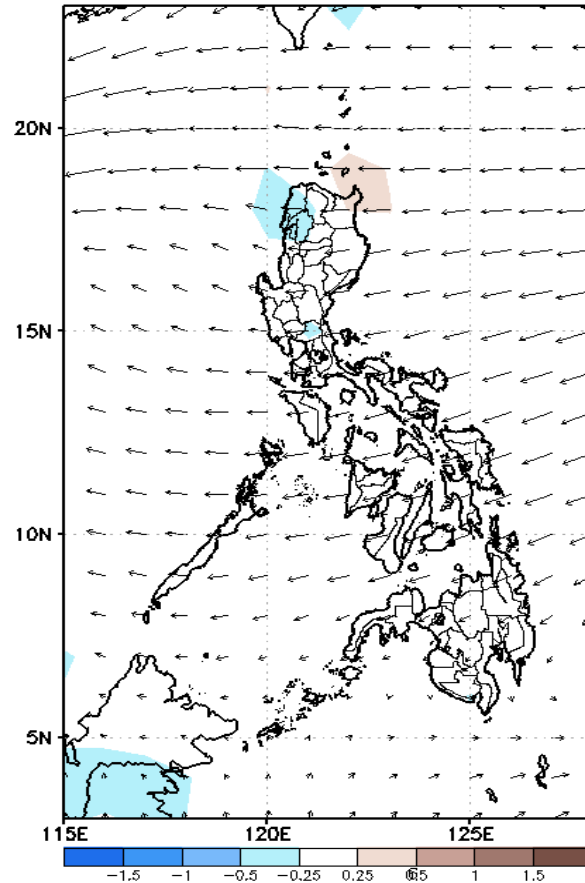
Week 1 & Week 2 Forecast for the Philippines using GEFS Model



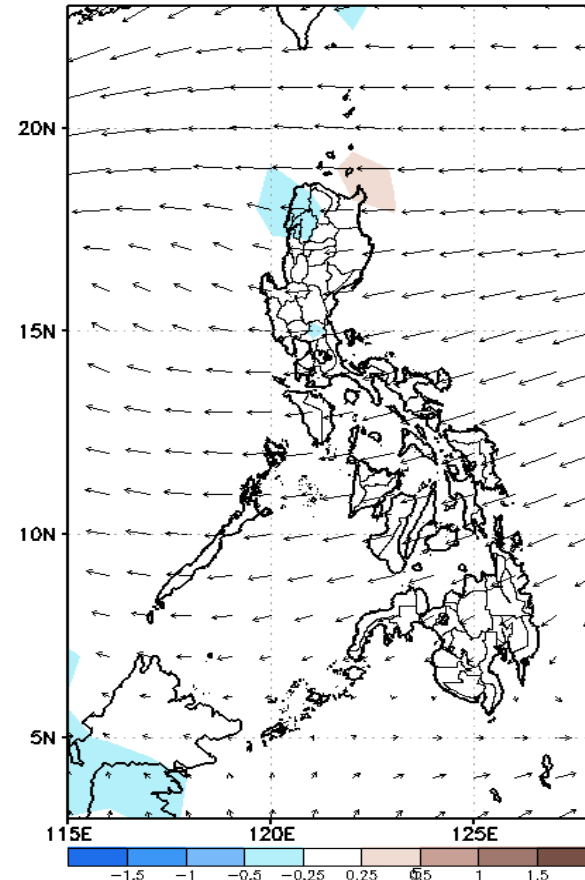
GEFS Week-1 Forecasts: Wind Anomaly Forecast

Week 1: Oct 20-26, 2022

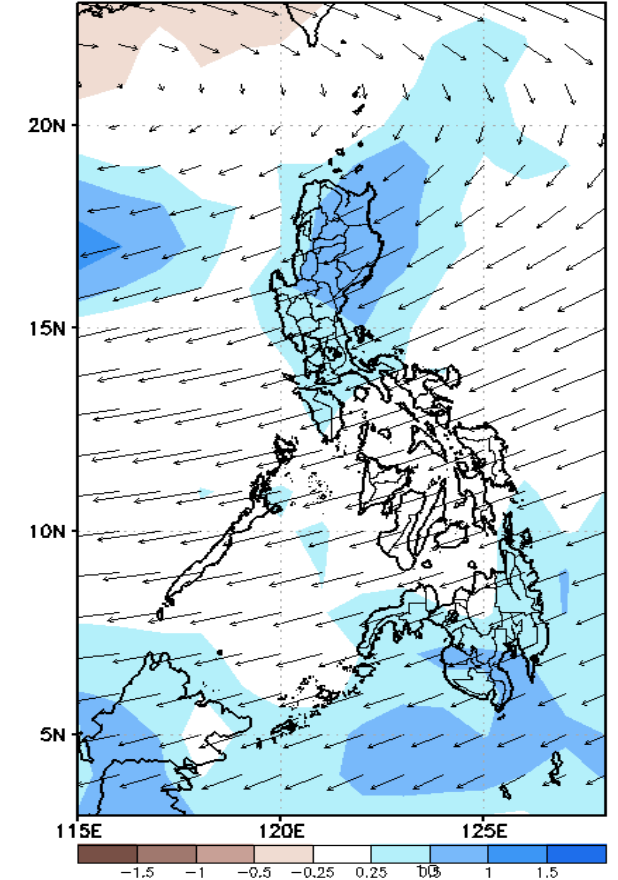
GEFS Week-1 850-hPa Divergence and Wind Anomaly
Valid: 20221020 - 20221026



GEFS Week-1 700-hPa Divergence and Wind Anomaly
Valid: 20221020 - 20221026



GEFS Week-1 200-hPa Divergence and Wind Anomaly
Valid: 20221020 - 20221026

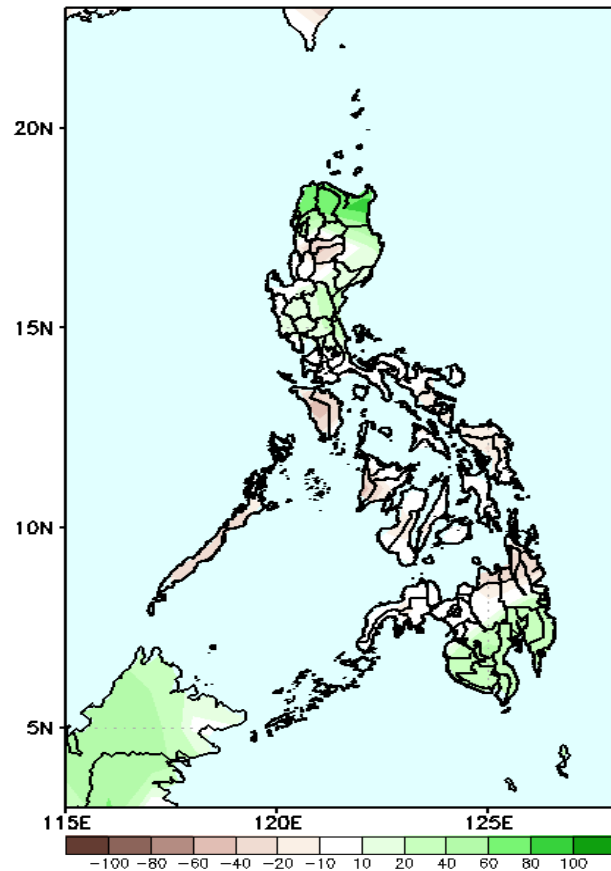


Easterlies is forecasted to affect most parts of the country during the forecast period.

Precipitation Anomaly and Exceedance Probability > 25/50 mm

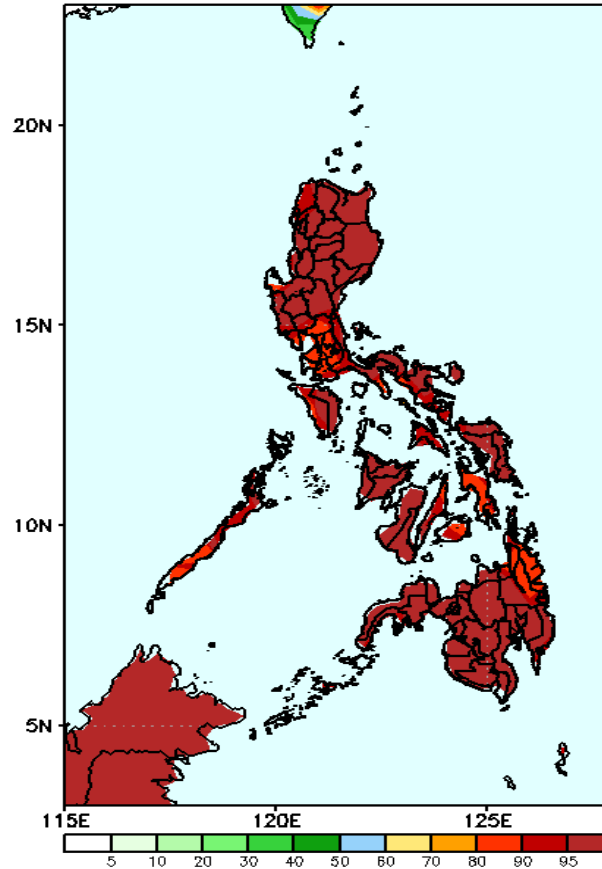
Week 1: Oct 20-26, 2022

GEFS Week-1 Precip Anomaly
Valid: 20221020 - 20221026



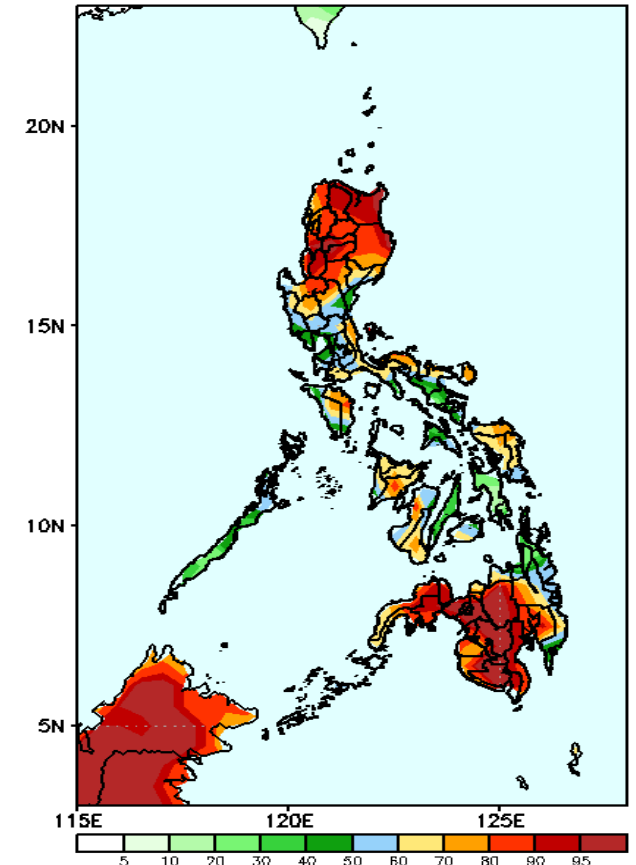
Rainfall deficit of 20-80mm is expected in Mt. Province and Ifugao and most parts of Visayas and northern Mindanao while 40-90mm increase of rainfall in extreme northern Luzon and some areas in Central Luzon and southern Mindanao during the forecast period.

GEFS Week-1 Exceedance Prob. > 25mm
Valid: 20221020 - 20221026



High probability of rainfall to exceed 25mm in most parts of the country during the forecast period.

GEFS Week-1 Exceedance Prob. > 50mm
Valid: 20221020 - 20221026



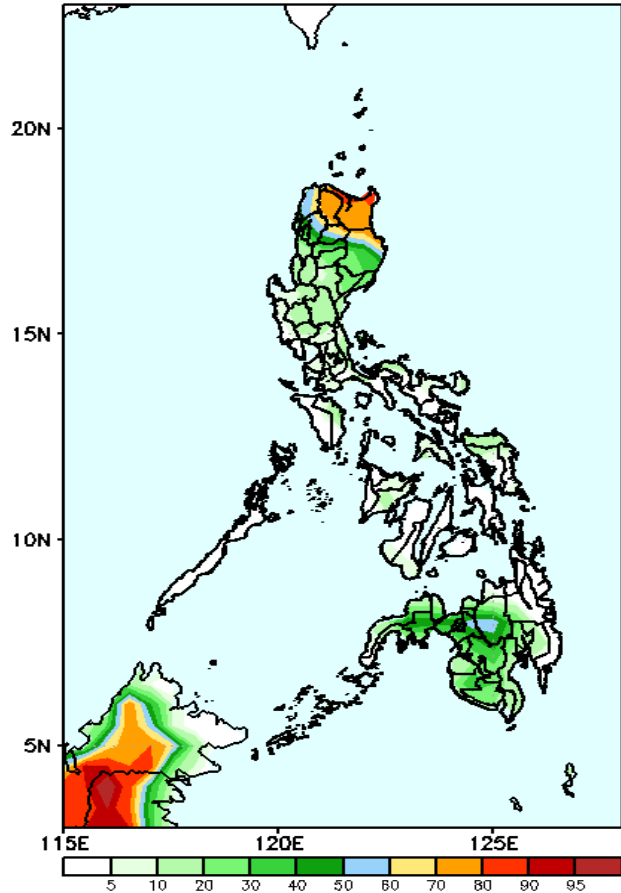
High probability of rainfall to exceed 50mm in most parts of Northern and Central Luzon and Mindanao while 40-85% chance for the rest of the country during the forecast period.



Exceedance Probability > 100/150/200 mm

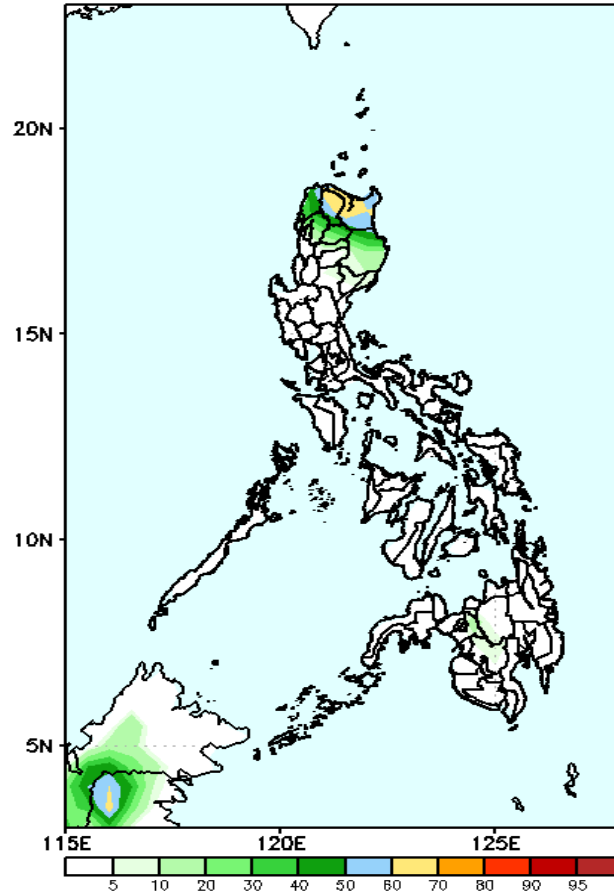
Week 1: Oct 20-26, 2022

GEFS Week-1 Exceedance Prob. > 100mm
Valid: 20221020 - 20221026



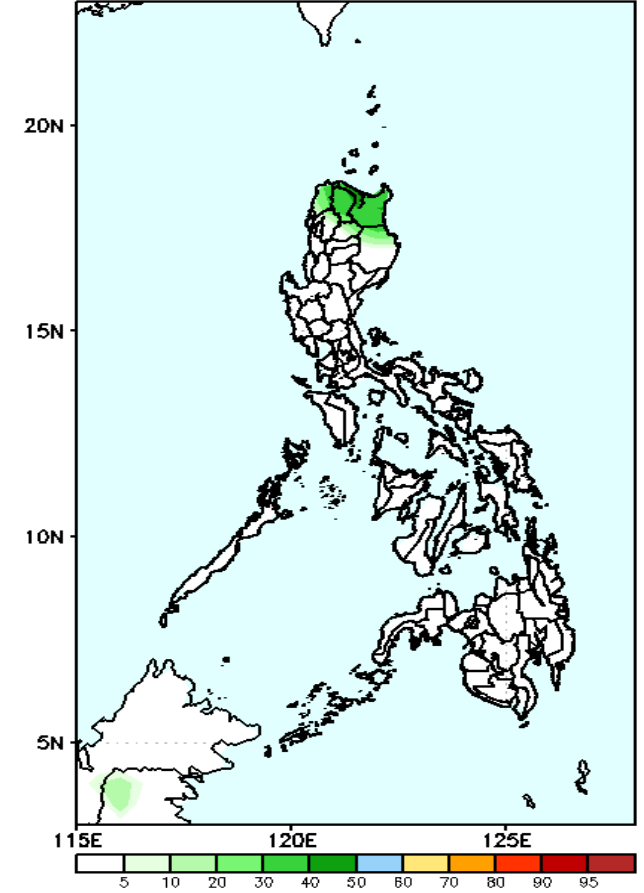
60-85% probability of rainfall to exceed 100mm in extreme northern Luzon while less likely for the rest of the country during the forecast period during the forecast period.

GEFS Week-1 Exceedance Prob. > 150mm
Valid: 20221020 - 20221026



Low probability of rainfall to exceed 150mm in most parts of the country during the forecast period.

GEFS Week-1 Exceedance Prob. > 200mm
Valid: 20221020 - 20221026

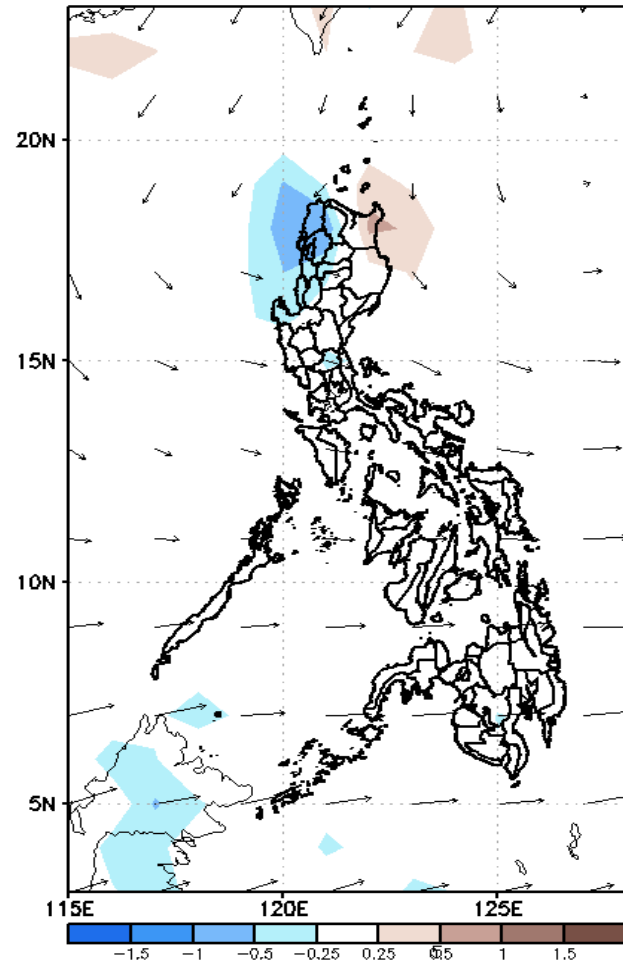


Low probability of rainfall to exceed 200mm in most parts of the country during the forecast period.

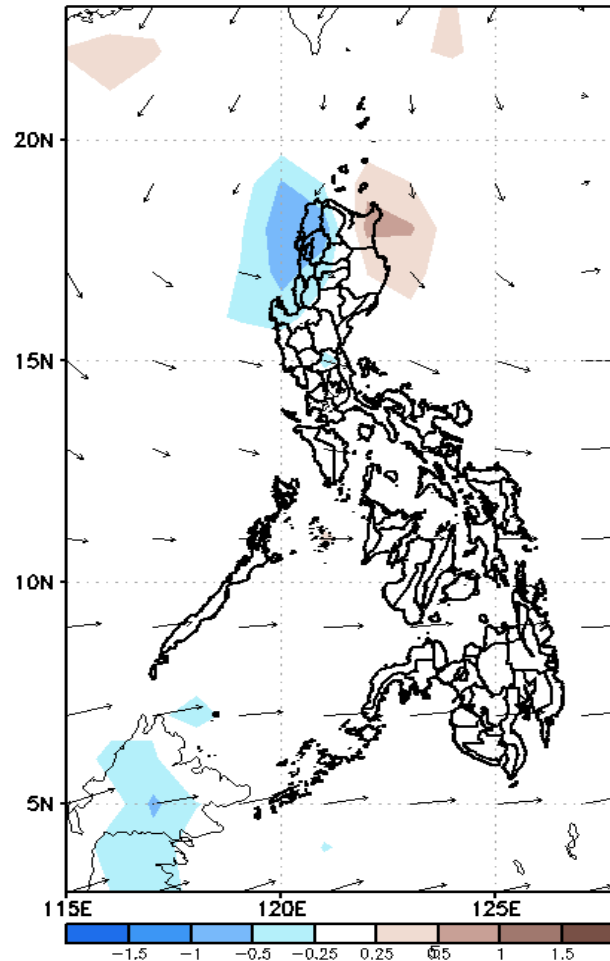
GEFS Week-2 Forecasts: Wind Anomaly Forecast

Week 2: Oct 27- NOV 02, 2022

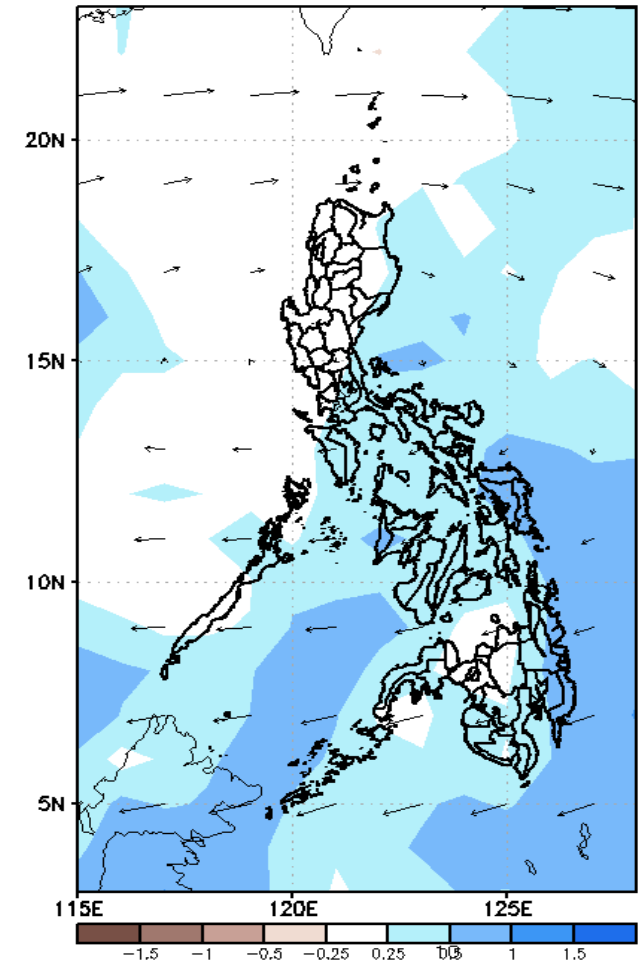
GEFS Week-2 850-hPa Divergence and Wind Anom
Valid: 20221027 - 20221102



GEFS Week-2 700-hPa Divergence and Wind Anom
Valid: 20221027 - 20221102



GEFS week-2 200-hPa Divergence and Wind Anom
Valid: 20221027 - 20221102



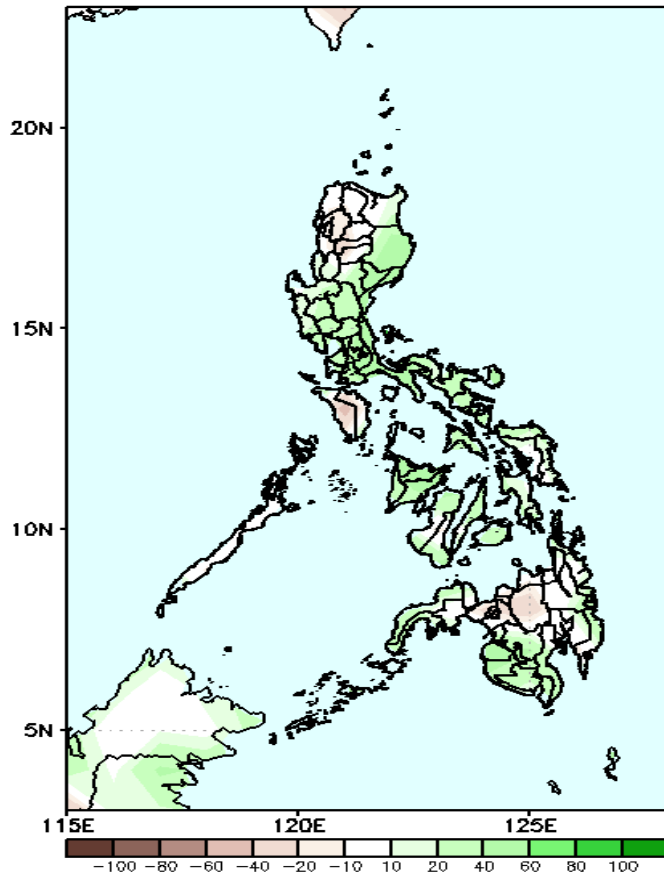
Easterly windflow affecting Northern and Central Luzon while Westerly wind anomaly is forecasted to affect the rest of the country during the forecast period.

ong
ASA

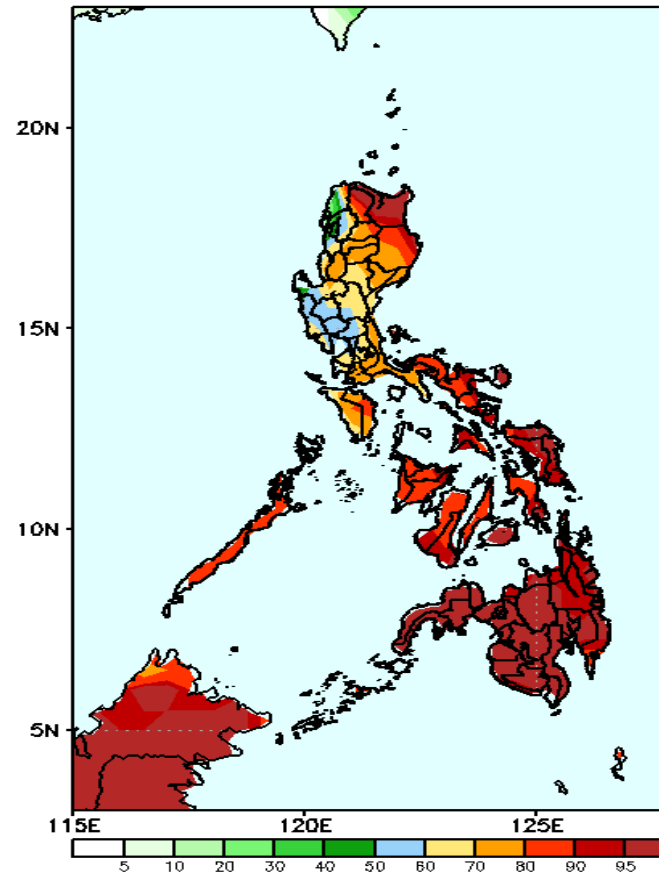
Precipitation Anomaly and Exceedance Probability > 25/50 mm

Week 2: Oct 27- NOV 02, 2022

GEFS Week-2 Precip Anomaly
Valid: 20221027 - 20221102

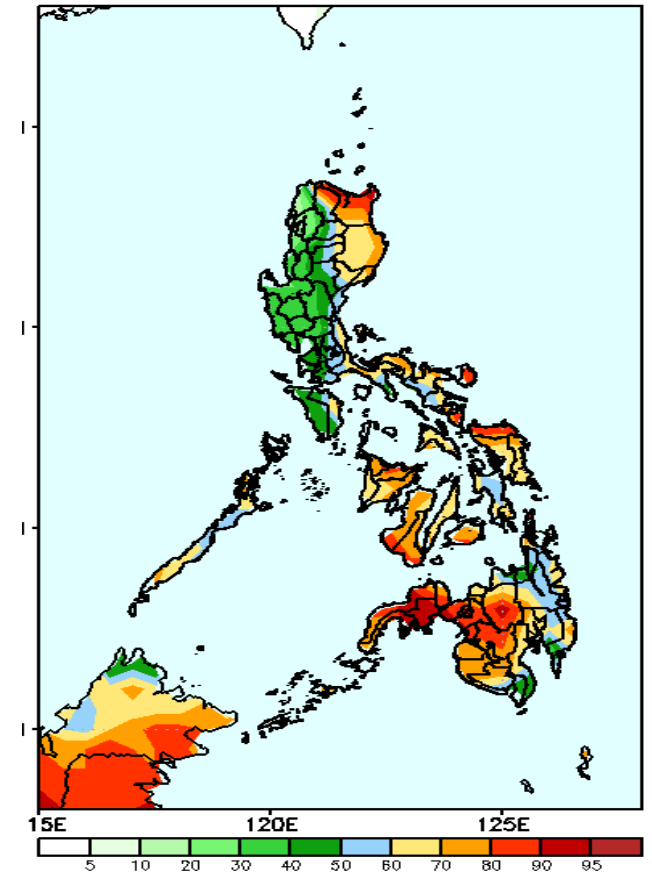


GEFS Week-2 Exceedance Prob. > 25mm
Valid: 20221027 - 20221102



High probability of rainfall to exceed 25mm in most parts of the country during the forecast period.

GEFS Week-2 Exceedance Prob. > 50mm
Valid: 20221027 - 20221102



High probability of rainfall to exceed 50mm in most parts of the country except in western and central parts of Luzon during the forecast period.

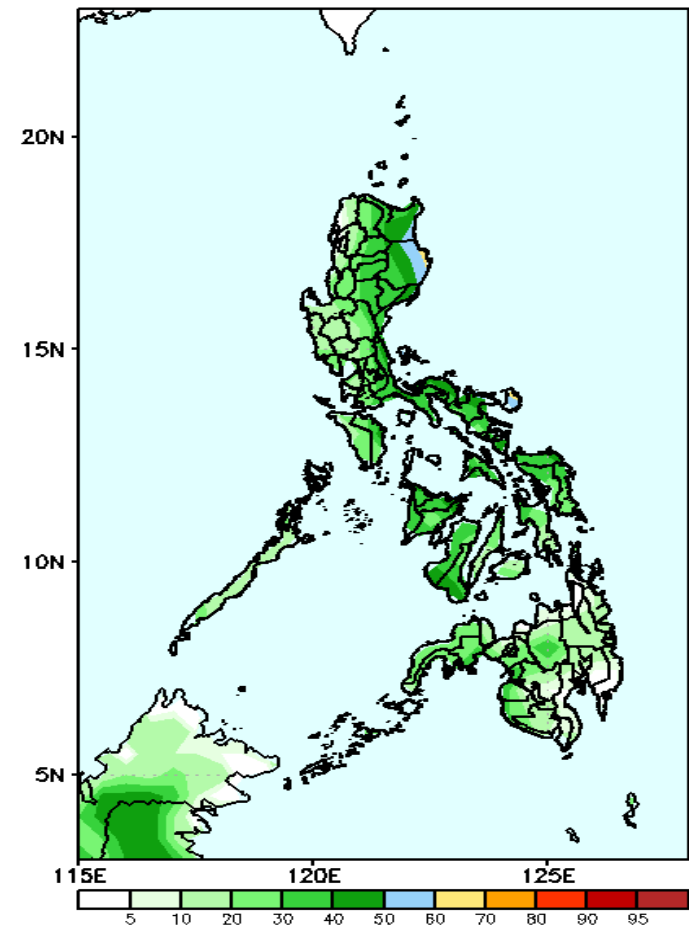
Increase of rainfall of 40-80mm in most parts of the country except in some areas in Mindoro and Bukidnon where 20-50mm rainfall deficit is expected during the forecast period.



Exceedance Probability > 100/150/200 mm

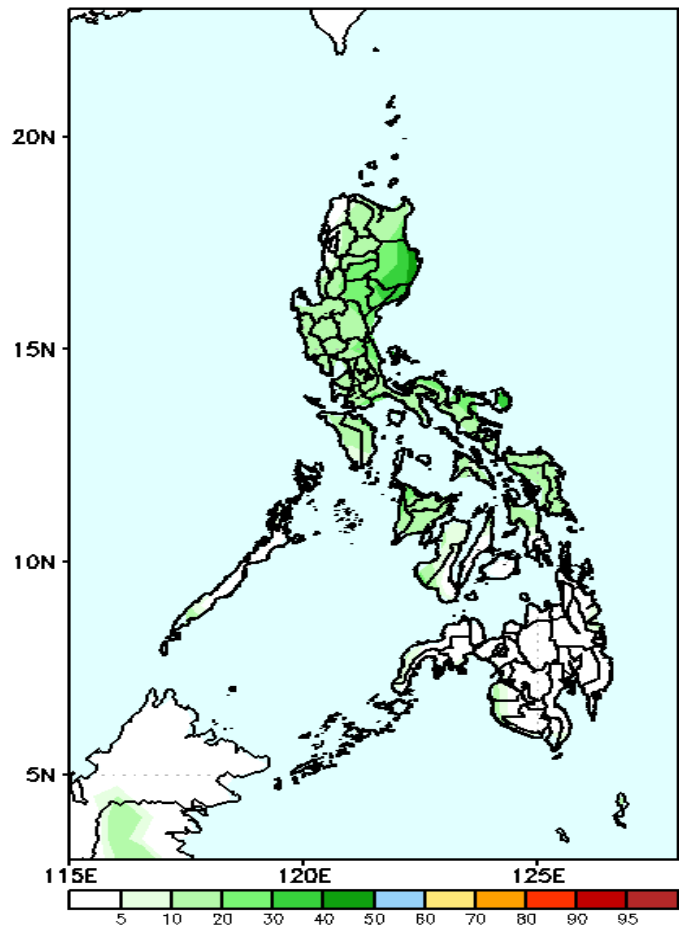
Week 2: Oct 27- NOV 02, 2022

GEFS Week-2 Exceedance Prob. > 100mm
Valid: 20221027 – 20221102



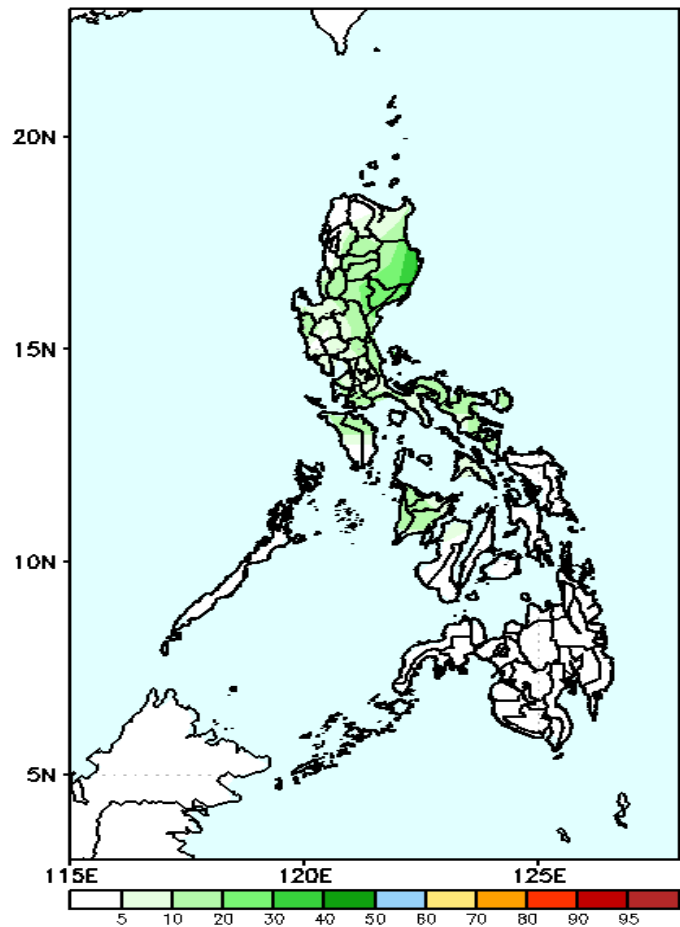
Low probability of rainfall to exceed 100mm in most parts of the country during the forecast period.

GEFS Week-2 Exceedance Prob. > 150mm
Valid: 20221027 – 20221102



Low probability of rainfall to exceed 150mm in most parts of the country during the forecast period.

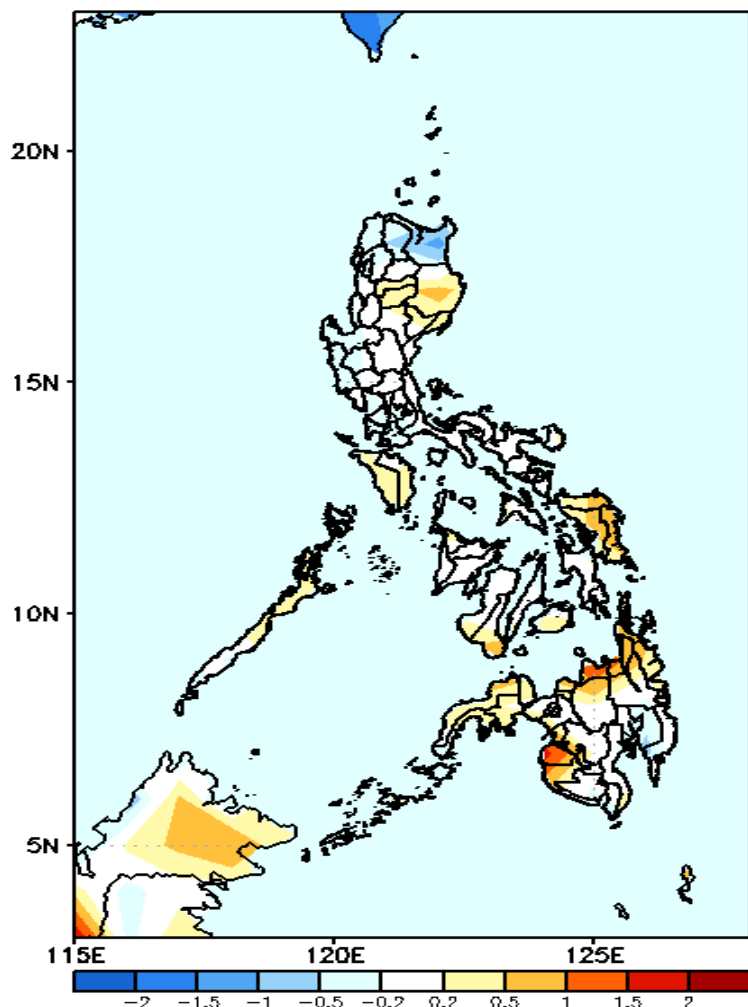
GEFS Week-2 Exceedance Prob. > 200mm
Valid: 20221027 – 20221102



Low probability of rainfall to exceed 200mm in most parts of the country during the forecast period.

GEFS Week-1 & 2 Forecasts: T2m Anomaly

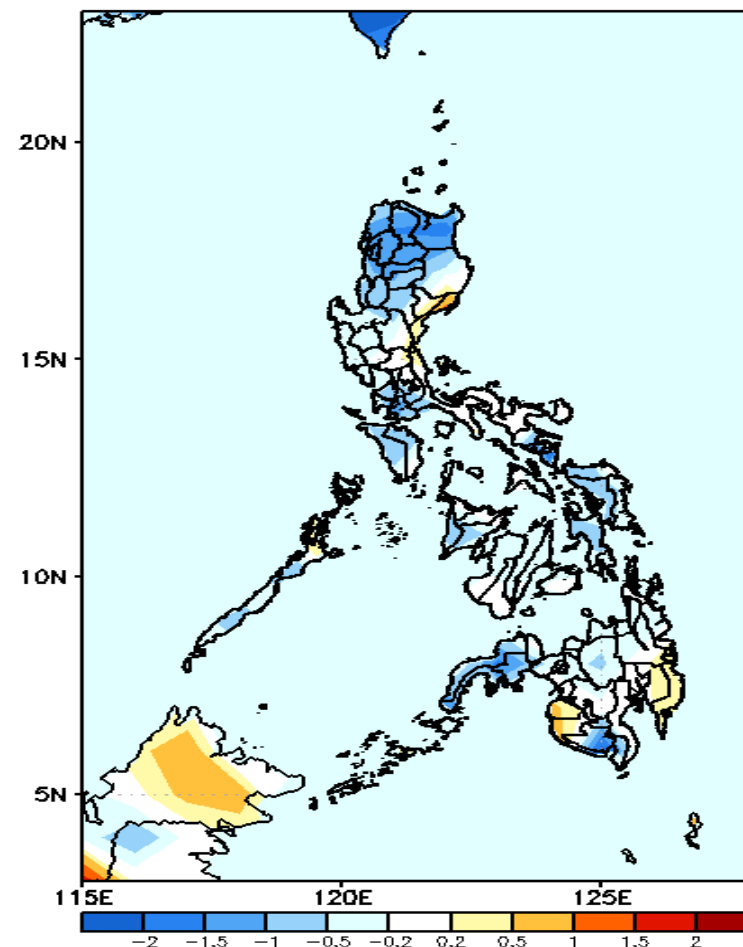
GEFS Week-1 T2m Anomaly
Valid: 20221020 - 20221026



2m Temperature Week 1: Oct 20-26, 2022

Near to slightly warmer than average surface air temperature will likely experience in most parts of the country except in Cagayan (slightly cooler), Maguindanao and Misamis Oriental (warmer) during the forecast period.

GEFS Week-2 T2m Anomaly
Valid: 20221027 - 20221102



2m Temperature Week 2: Oct 27- NOV 02, 2022

Near to cooler than average surface air temperature will likely experience in most parts of the country except in some areas in eastern Luzon, Maguindanao, Sultan Kudarat and Davao Region where slightly warmer than average surface air temperature is expected during the forecast period.