



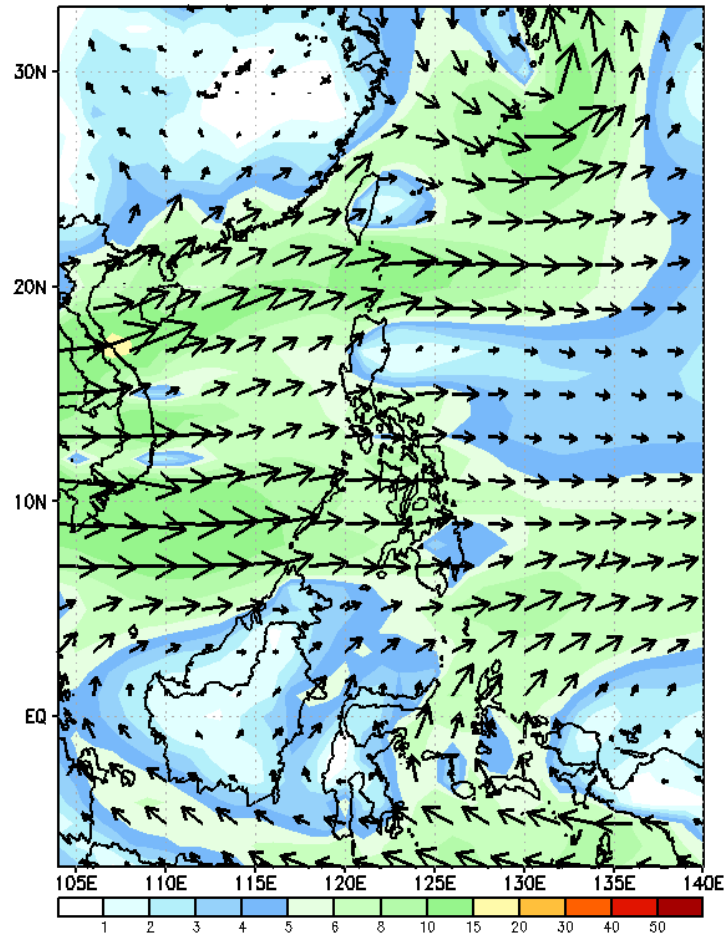
Week 1 & Week 2 Forecast for the Philippines using GEFS Model



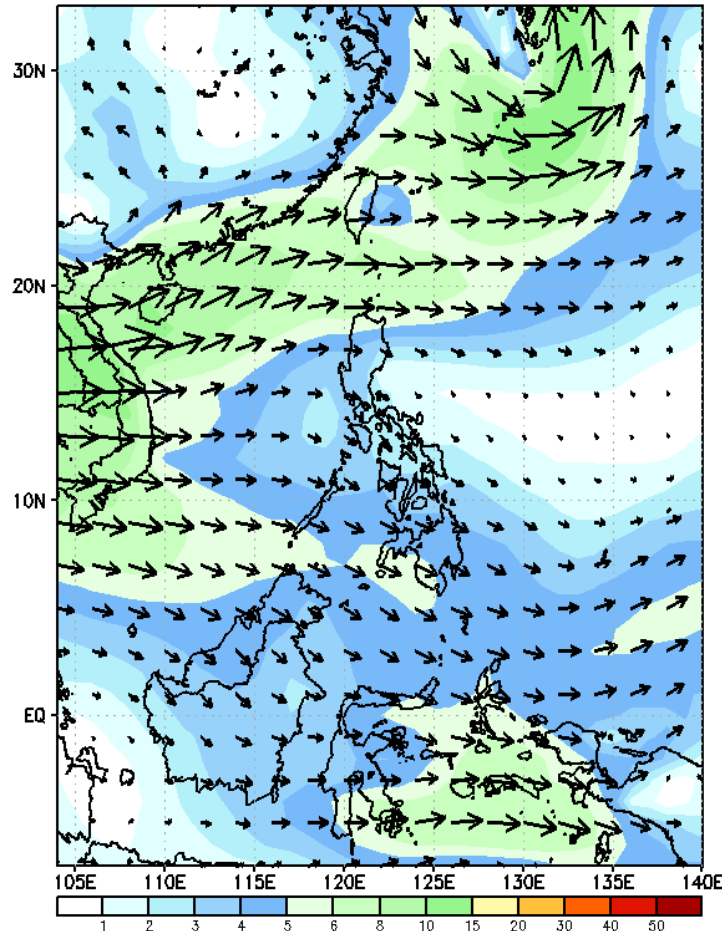
GEFS Week-1 Forecasts: Wind Forecast

Week 1: Aug 07-13, 2023

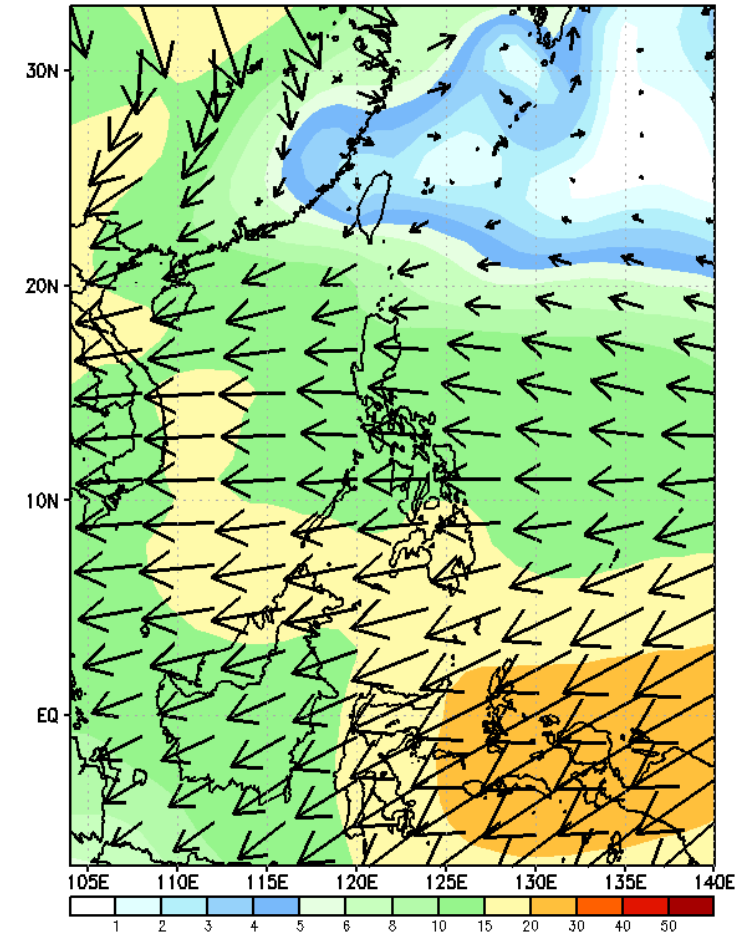
GEFS Week-1 850-hPa Wind Total
Valid: 20230807 - 20230813



GEFS Week-1 700-hPa Wind Total
Valid: 20230807 - 20230813

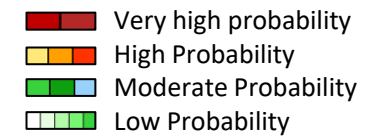


GEFS Week-1 200-hPa Wind Total
Valid: 20230807 - 20230813



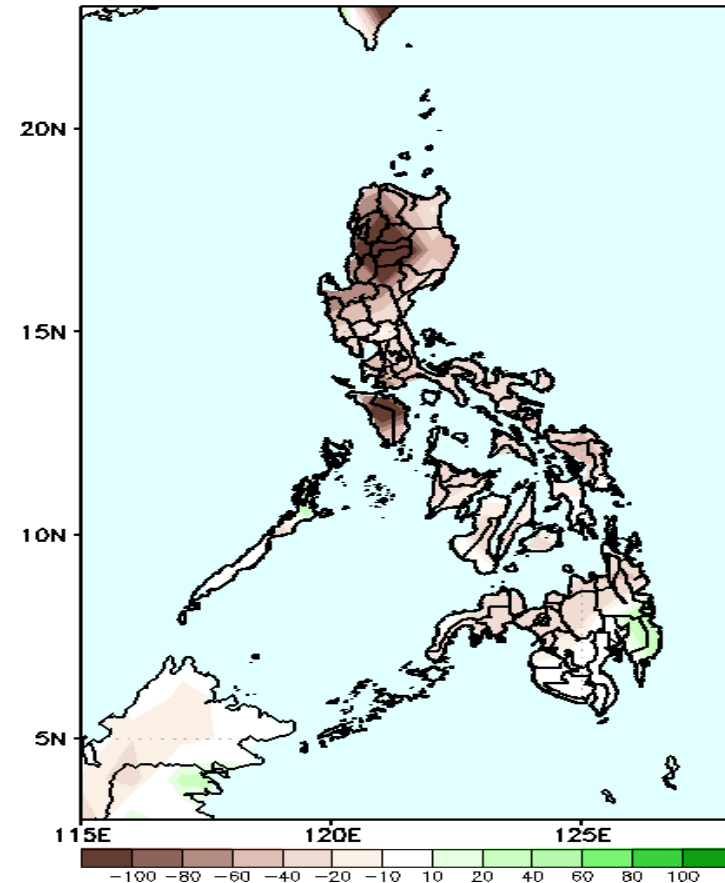
Southwest Monsoon is forecasted to prevail in most parts of Western Luzon and Western Visayas.

Precipitation Anomaly and Exceedance Probability > 25/50 mm



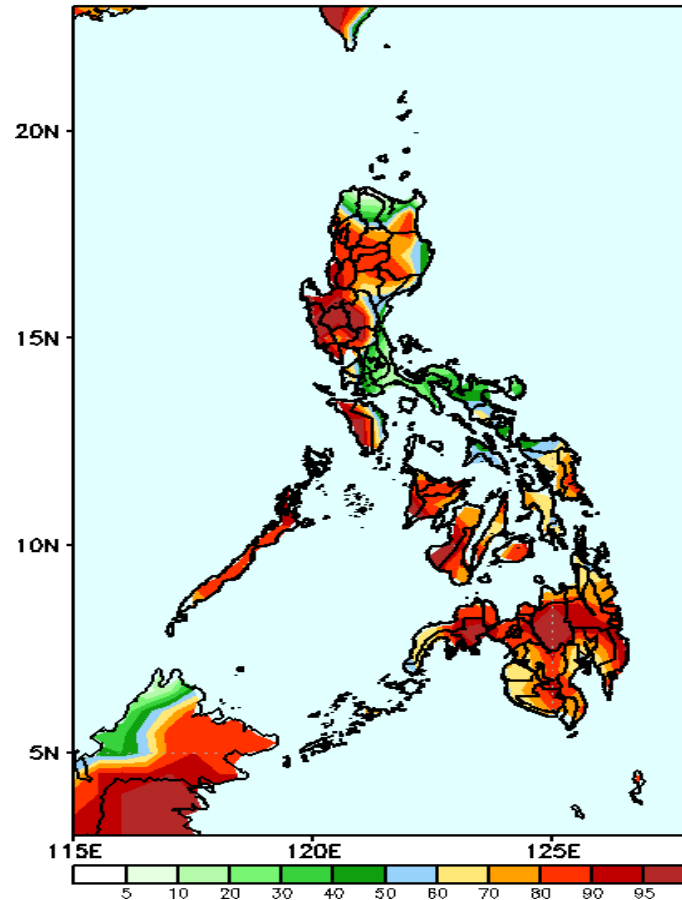
Week 1: Aug 07-13, 2023

GEFS Week-1 Precip Anomaly
Valid: 20230807 - 20230813



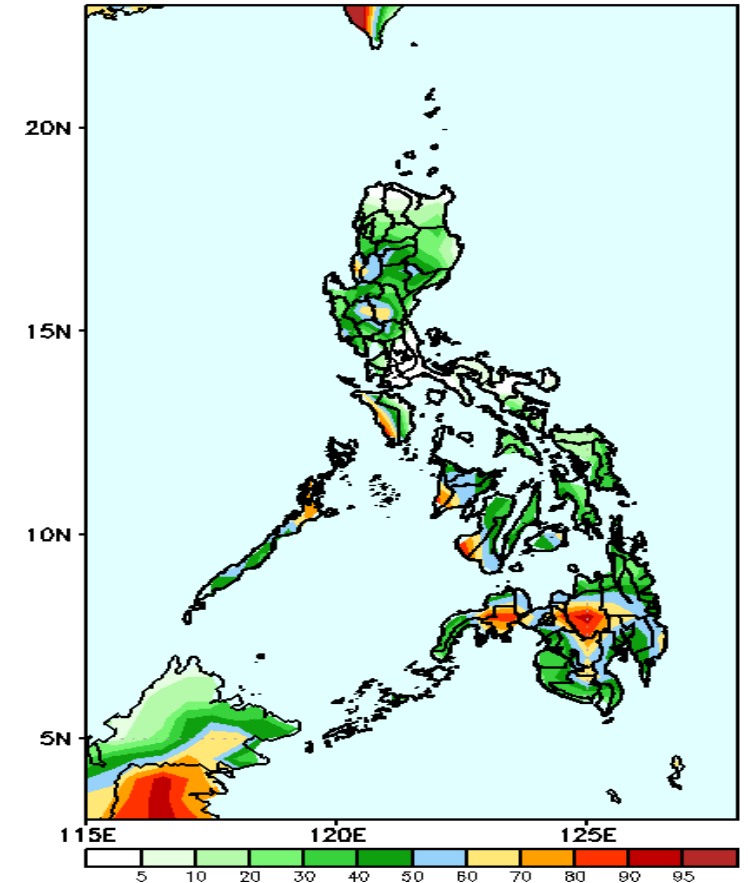
Rainfall deficit of more than 100mm is expected in most parts of Ilocos Region, CAR and Mindoro and 40-100mm for the remaining parts of the country except in Davao Region-40-60 increase of rainfall.

GEFS Week-1 Exceedance Prob. > 25mm
Valid: 20230807 - 20230813



High to a very high probability to exceed 25mm in most parts of Northern and Central Luzon, Palawan, Occ. Mindoro and most parts of Visayas and Mindanao while moderate to high chance over the rest of Luzon.

GEFS Week-1 Exceedance Prob. > 50mm
Valid: 20230807 - 20230813



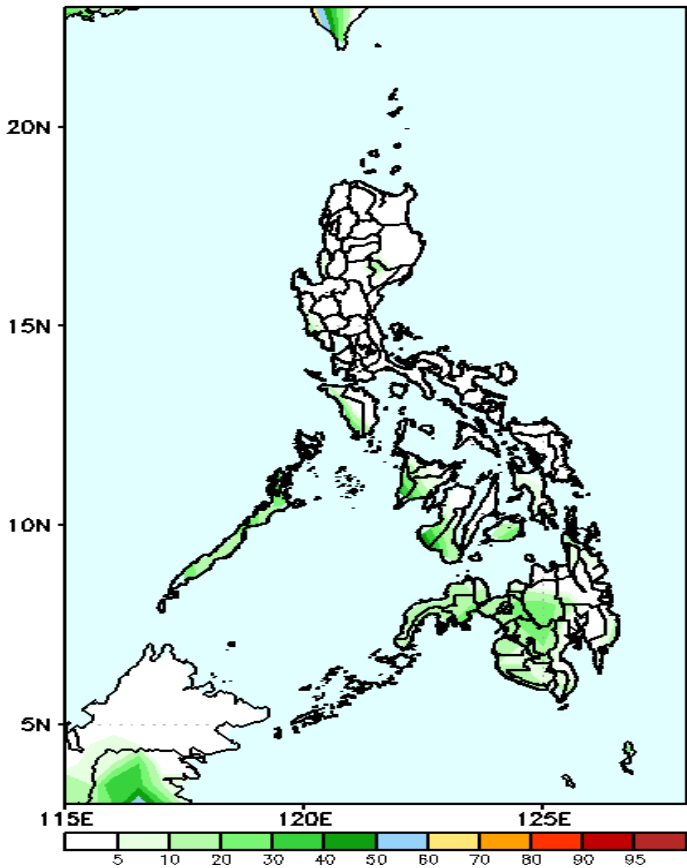
Moderate to high probability to exceed 50mm of rainfall over Nueva Vizcaya, Quirino, Central Luzon, Visayas and Mindanao while low to moderate likelihood over the rest of Luzon.

Exceedance Probability > 100/150/200 mm

Week 1: Aug 07-13, 2023

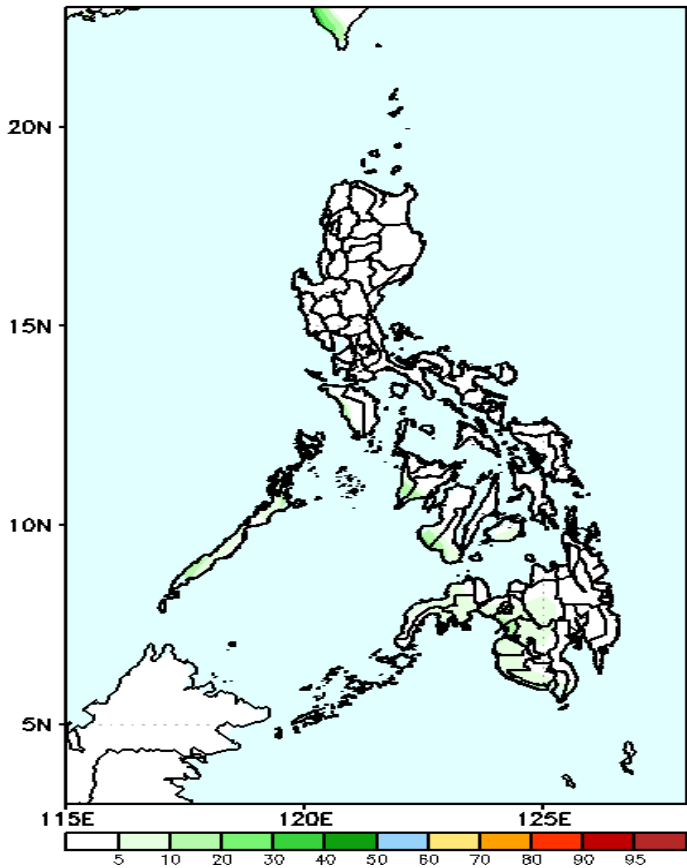
- Very high probability
- High Probability
- Moderate Probability
- Low Probability

GEFS Week-1 Exceedance Prob. > 100mm
Valid: 20230807 – 20230813



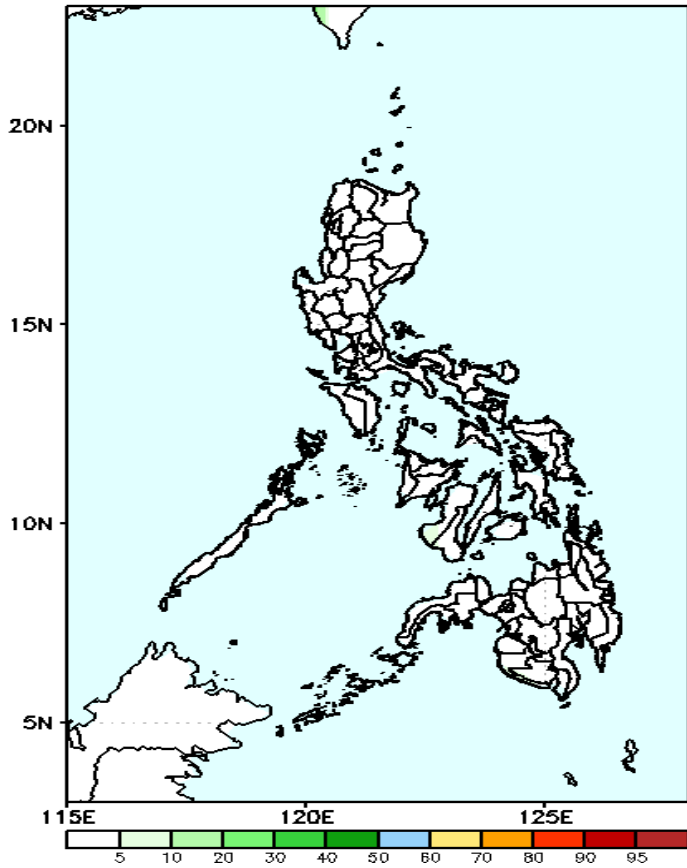
Low probability to exceed 100mm of rainfall over the rest of the country.

GEFS Week-1 Exceedance Prob. > 150mm
Valid: 20230807 – 20230813



Low probability to exceed 150mm of rainfall over the rest of the country.

GEFS Week-1 Exceedance Prob. > 200mm
Valid: 20230807 – 20230813

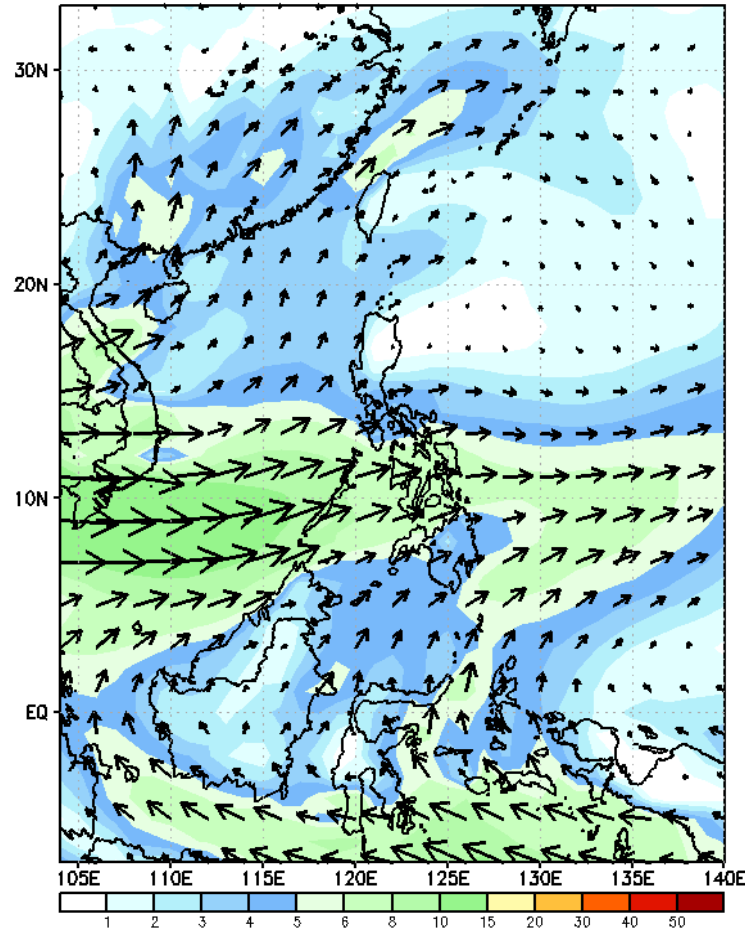


Low probability to exceed 200mm of rainfall over the rest of the country.

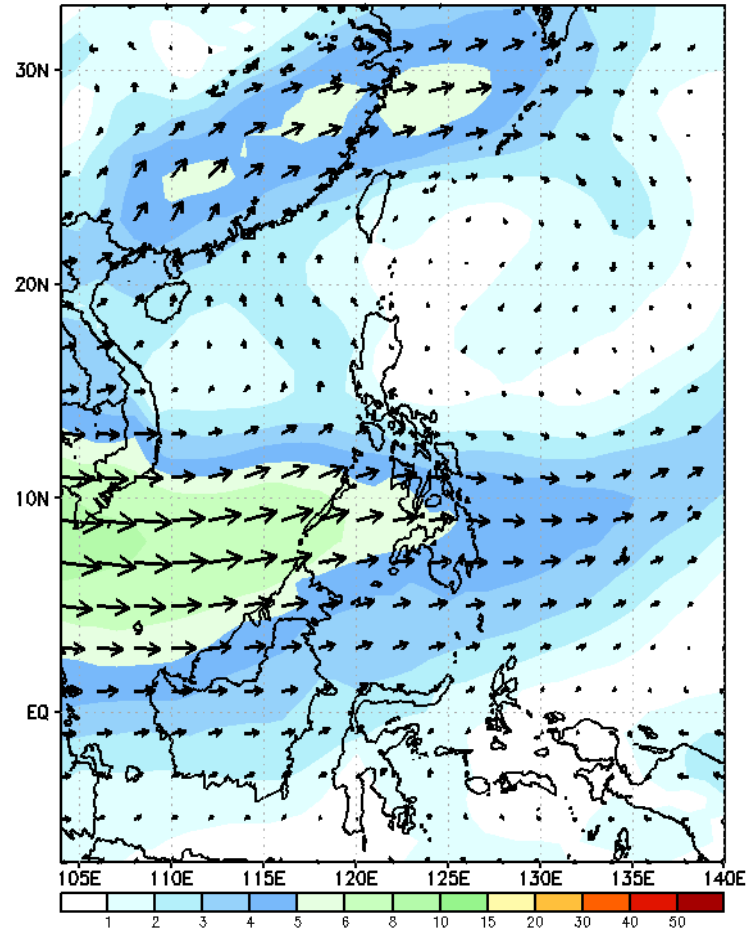
GEFS Week-2 Forecasts: Wind Forecast

Week 2: Aug 14-20, 2023

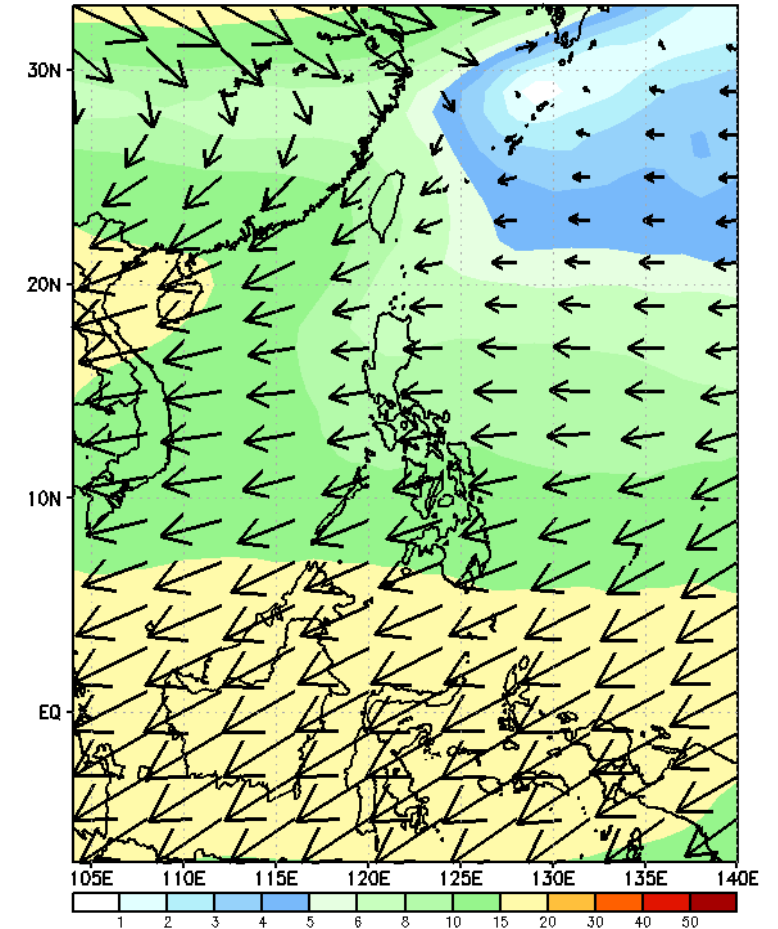
GEFS Week-2 850-hPa Wind Total
Valid: 20230814 - 20230820



GEFS Week-2 700-hPa Wind Total
Valid: 20230814 - 20230820



GEFS Week-2 200-hPa Wind Total
Valid: 20230814 - 20230820



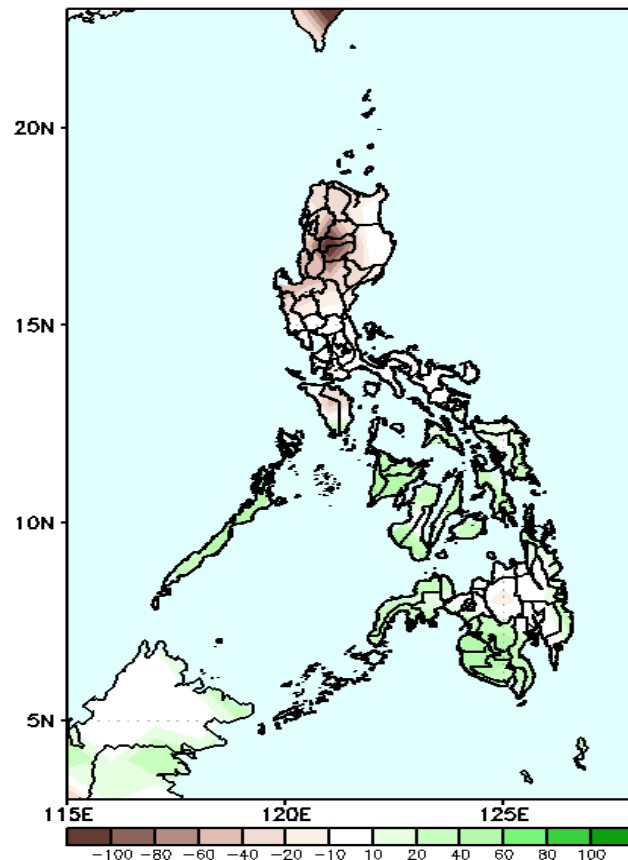
Weak Southwest Monsoon is forecasted to prevail in most parts of Western Luzon and some areas in Western Visayas

Precipitation Anomaly and Exceedance Probability > 25/50 mm



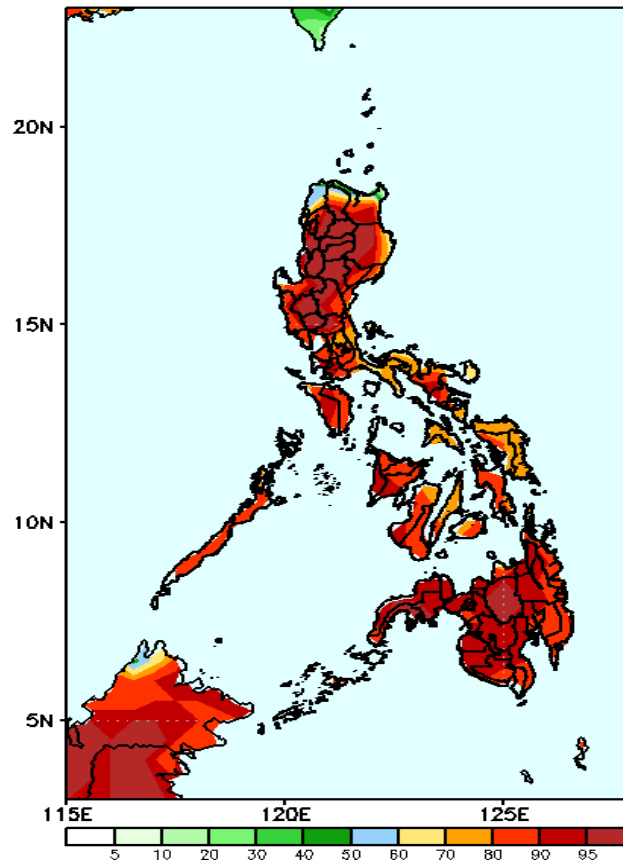
Week 2: Aug 14-20, 2023

GEFS Week-2 Precip Anomaly
Valid: 20230814 - 20230820



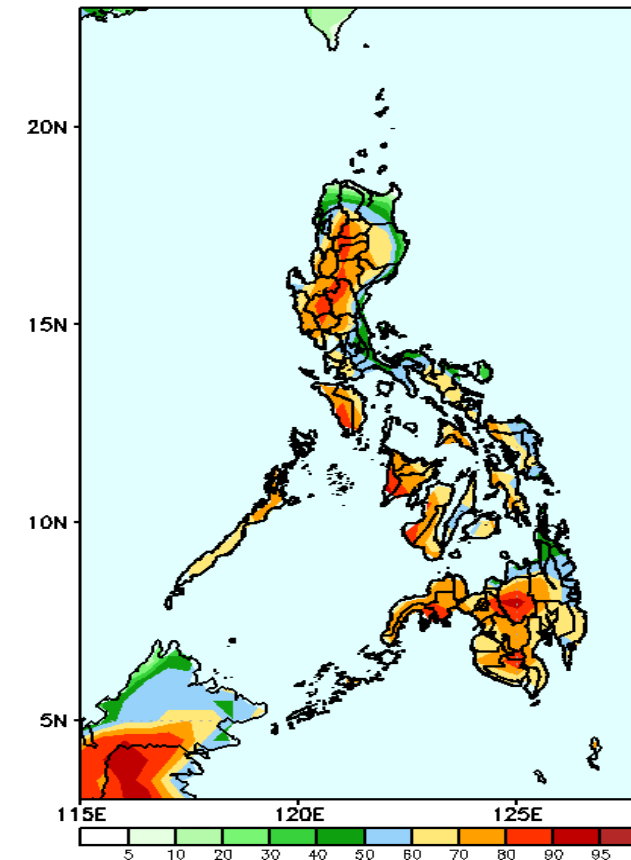
Rainfall deficit of 40-80mm is expected in most parts of Ilocos Region and CAR while 40-80mm increase of rainfall in Palawan and most parts of Visayas and Mindanao

GEFS Week-2 Exceedance Prob. > 25mm
Valid: 20230814 - 20230820



High to a very high probability to exceed 25mm of rainfall in most parts of the country.

GEFS Week-2 Exceedance Prob. > 50mm
Valid: 20230814 - 20230820



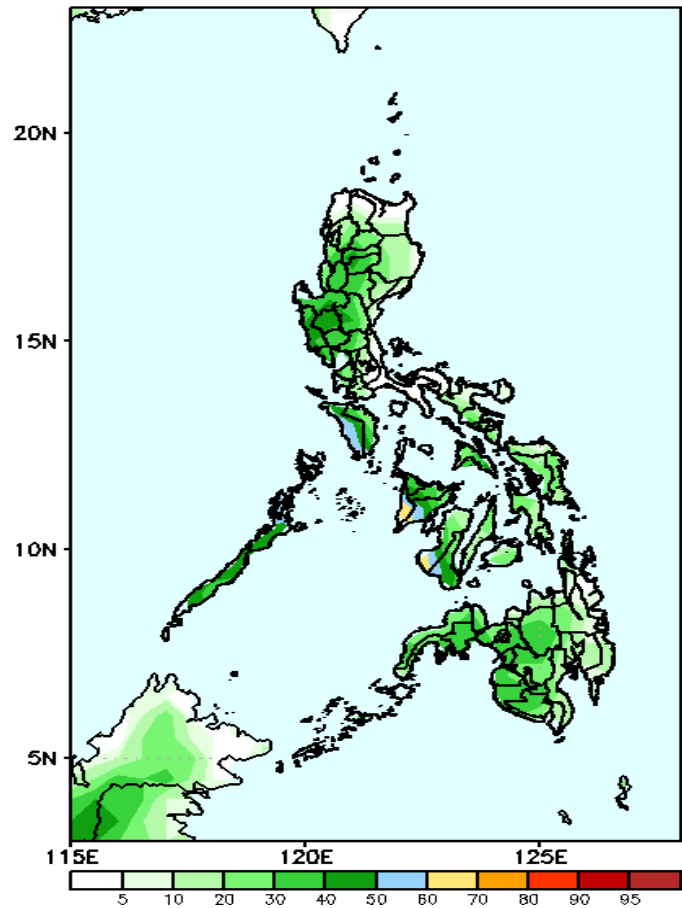
Moderate to high probability to exceed 50mm of rainfall in most parts of the country.

Exceedance Probability > 100/150/200 mm

Week 2: Aug 14-20, 2023

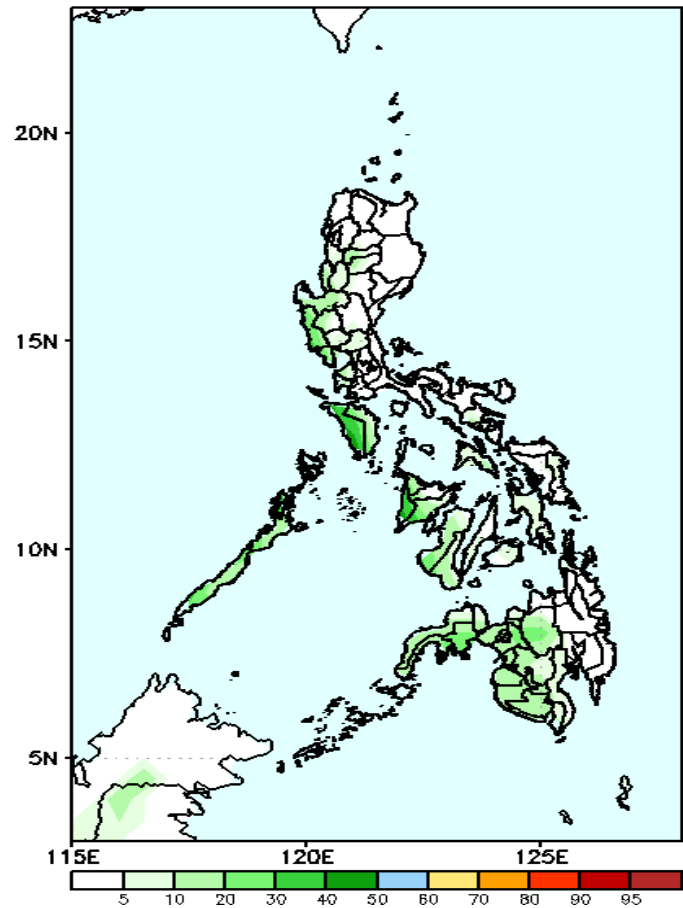
- Very high probability
- High Probability
- Moderate Probability
- Low Probability

GEFS Week-2 Exceedance Prob. > 100mm
Valid: 20230814 – 20230820



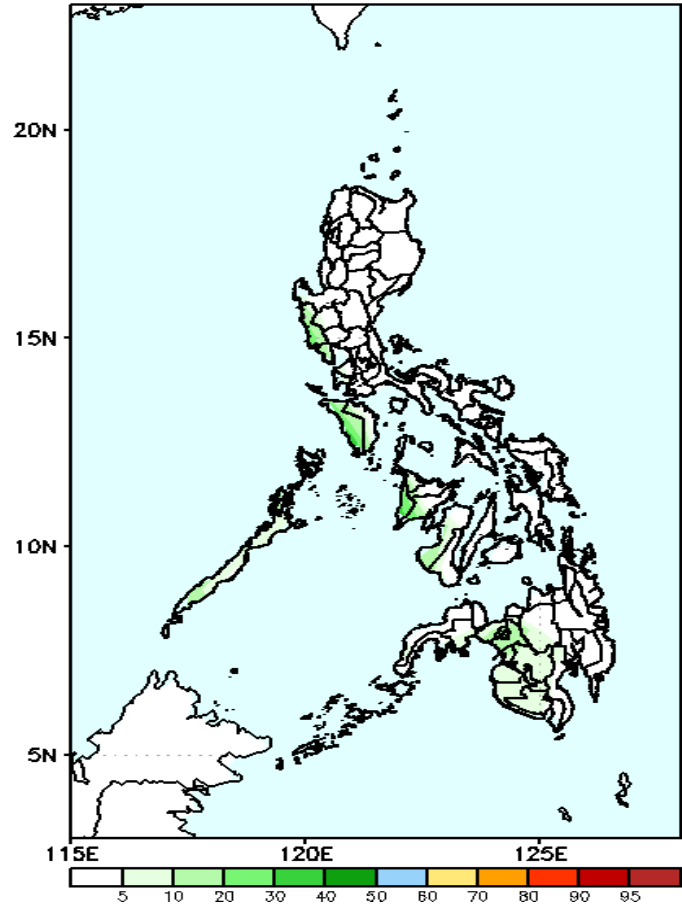
Low to moderate probability to exceed 100mm of rainfall in most parts of the country.

GEFS Week-2 Exceedance Prob. > 150mm
Valid: 20230814 – 20230820



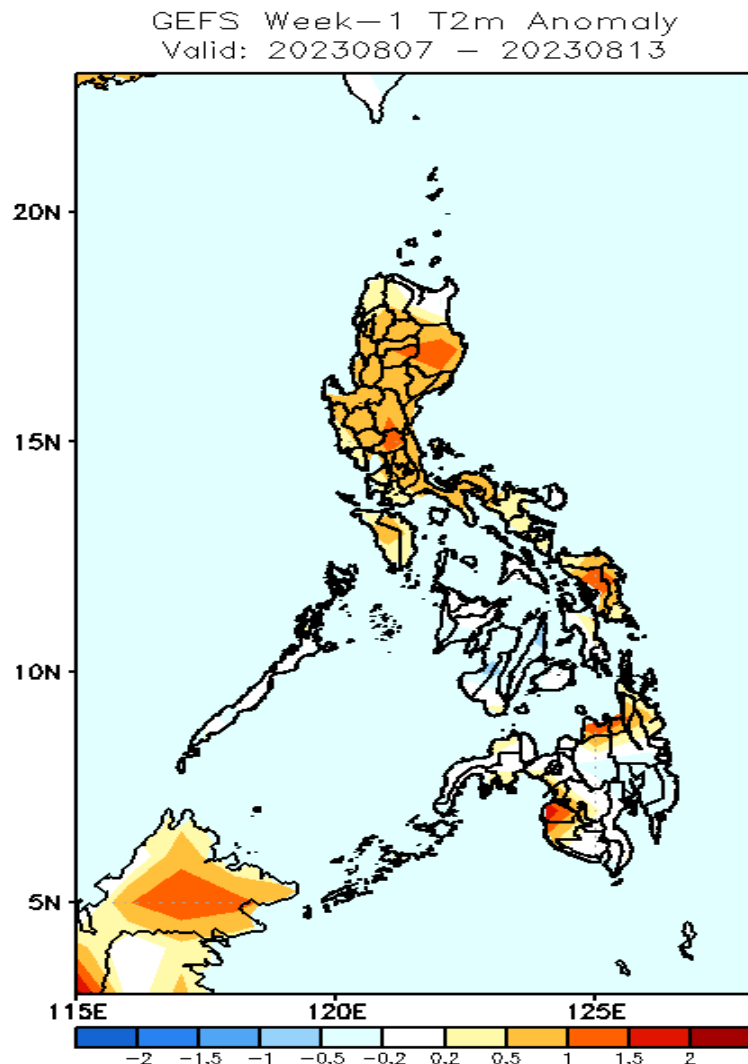
Low probability to exceed 150mm of rainfall over the rest of the country.

GEFS Week-2 Exceedance Prob. > 200mm
Valid: 20230814 – 20230820



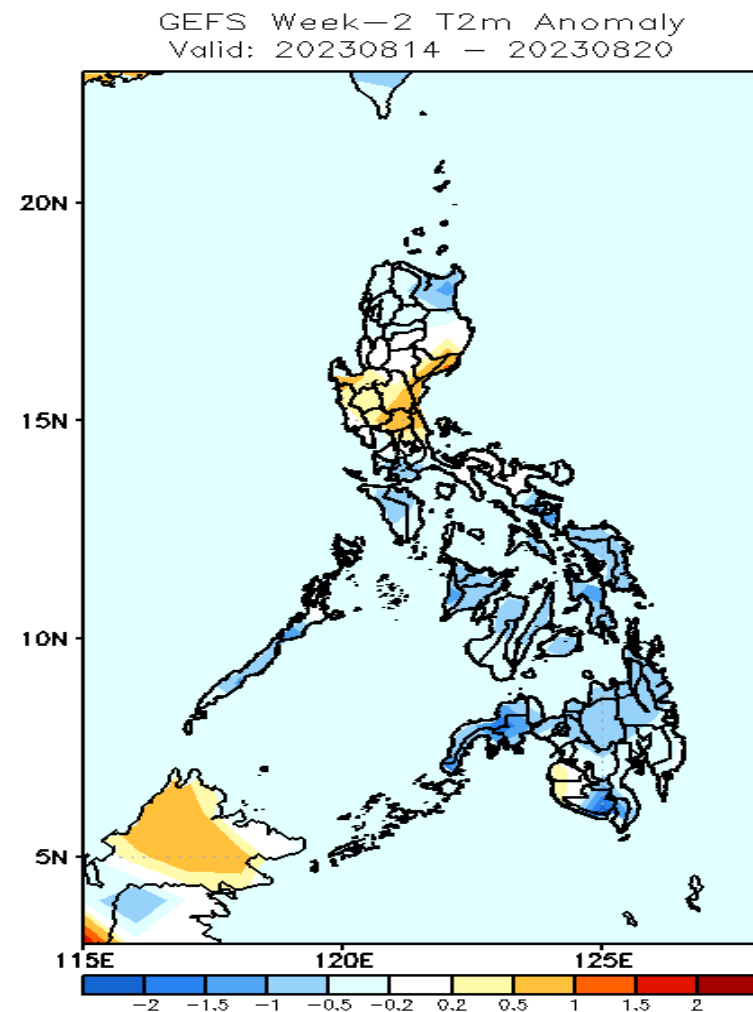
Low probability to exceed 200mm of rainfall over the rest of the country.

GEFS Week-1 & 2 Forecasts: T2m Anomaly



2m Temperature Week 1: Aug 07-13, 2023

Slightly warmer to warmer than average surface air temperature will likely experience in most parts of Luzon, Samar provinces Misamis Oriental and Maguindanao while average temperature is expected for the rest of the country.



2m Temperature Week 2: Aug 14-20, 2023

Slightly cooler to cooler than average surface air temperature will likely experience in Apayao and most parts of southern Luzon, Visayas and Mindanao while the rest of Luzon will likely have Average to slightly warmer than average temperature.