



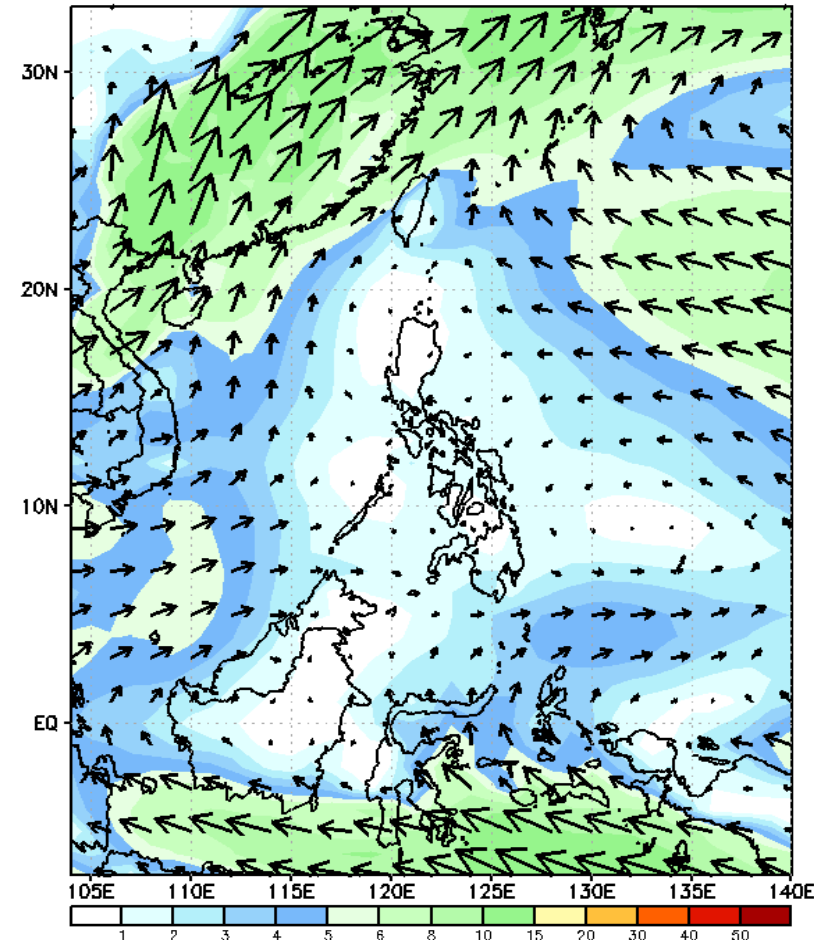
# Week 1 & Week 2 Forecast for the Philippines using GEFS Model



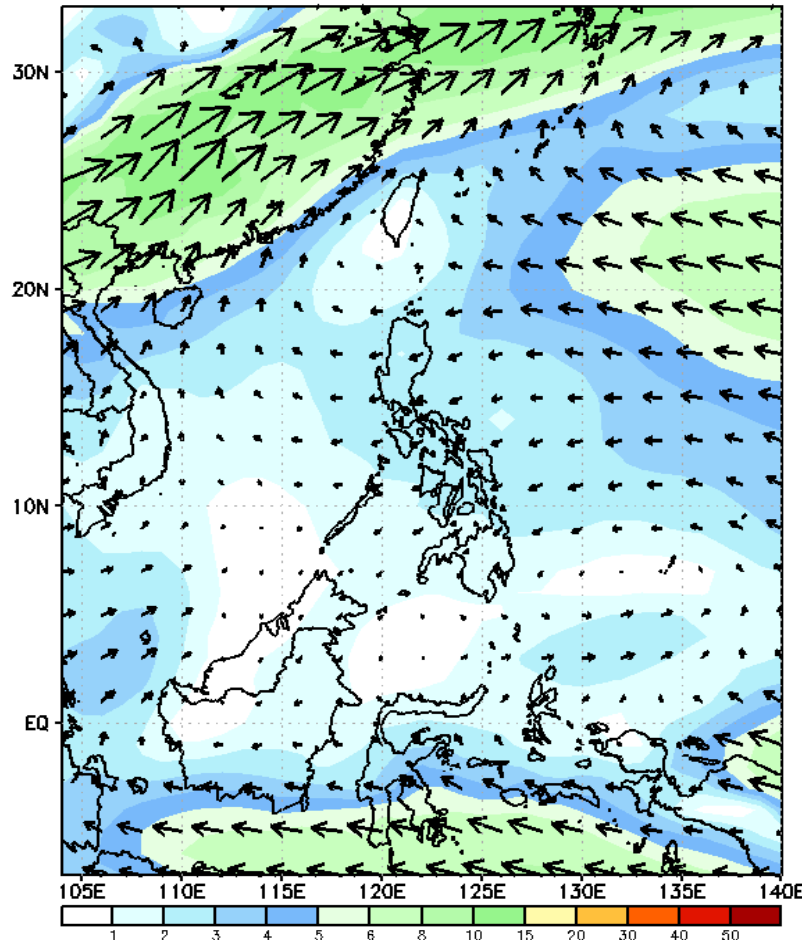
# GEFS Week-1 Forecasts: Wind Forecast

Week 1: July 07-13, 2023

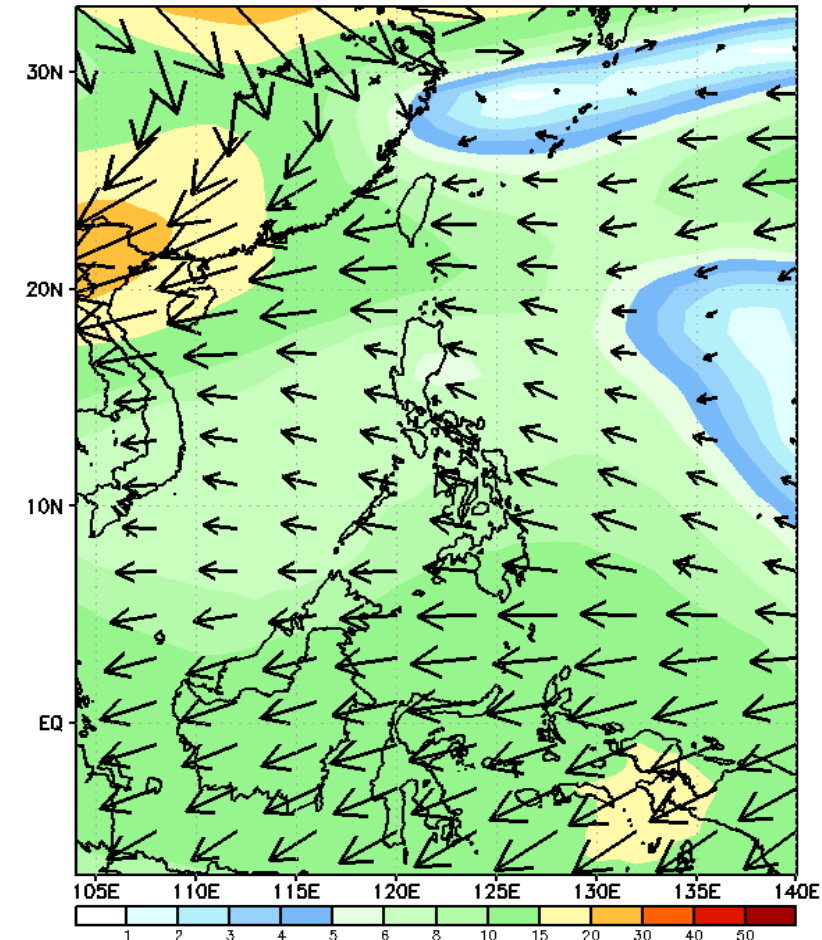
GEFS Week-1 850-hPa Wind Total  
Valid: 20230707 - 20230713



GEFS Week-1 700-hPa Wind Total  
Valid: 20230707 - 20230713

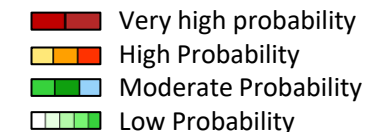


GEFS Week-1 200-hPa Wind Total  
Valid: 20230707 - 20230713



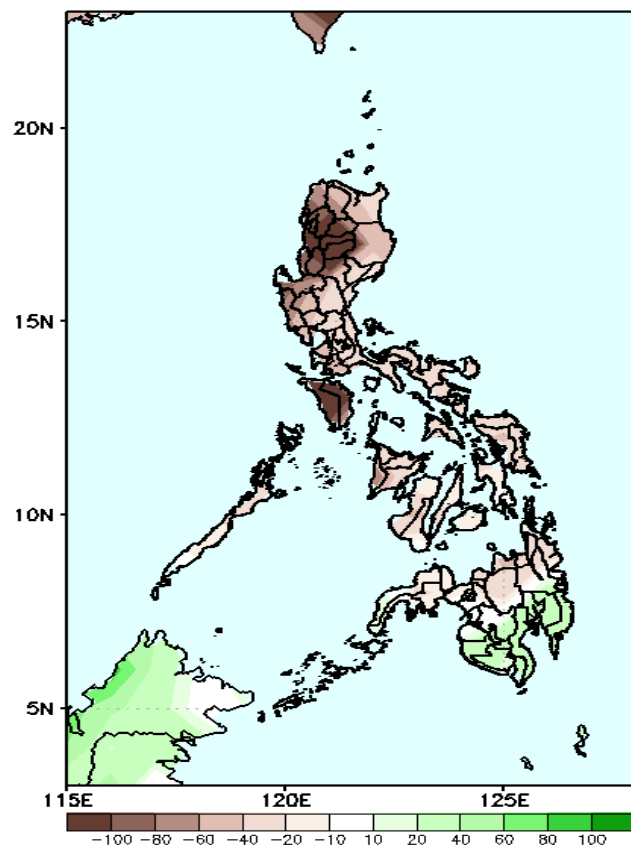
Easterlies will likely affect most parts of the country. SW monsoon affecting Palawan and the western section of Mindanao.

# Precipitation Anomaly and Exceedance Probability > 25/50 mm



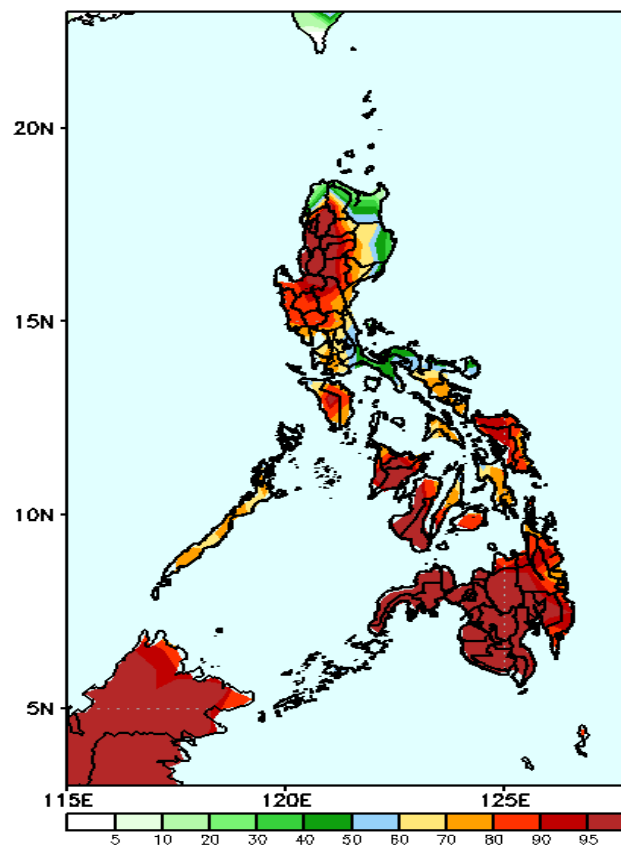
Week 1: July 07-13, 2023

GEFS Week-1 Precip Anomaly  
Valid: 20230707 - 20230713



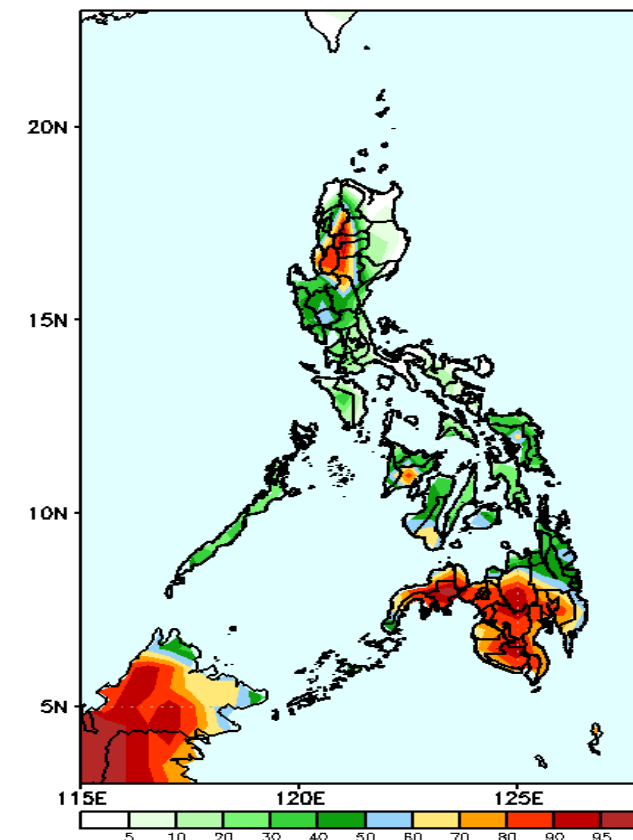
Rainfall deficit of more than 100mm is expected in most parts of CAR, Ilocos Region and Mindoro; 20-60mm for the rest of Luzon, Visayas and northern Mindanao while 20-60mm increase of rainfall will be likely in southern Mindanao.

GEFS Week-1 Exceedance Prob. > 25mm  
Valid: 20230707 - 20230713



High to a very high probability to exceed 25mm of rainfall over most parts of the country except for moderate to high likelihood in the Bicol Region, Isabela, Cagayan, Ilocos Norte, and Batanes.

GEFS Week-1 Exceedance Prob. > 50mm  
Valid: 20230707 - 20230713



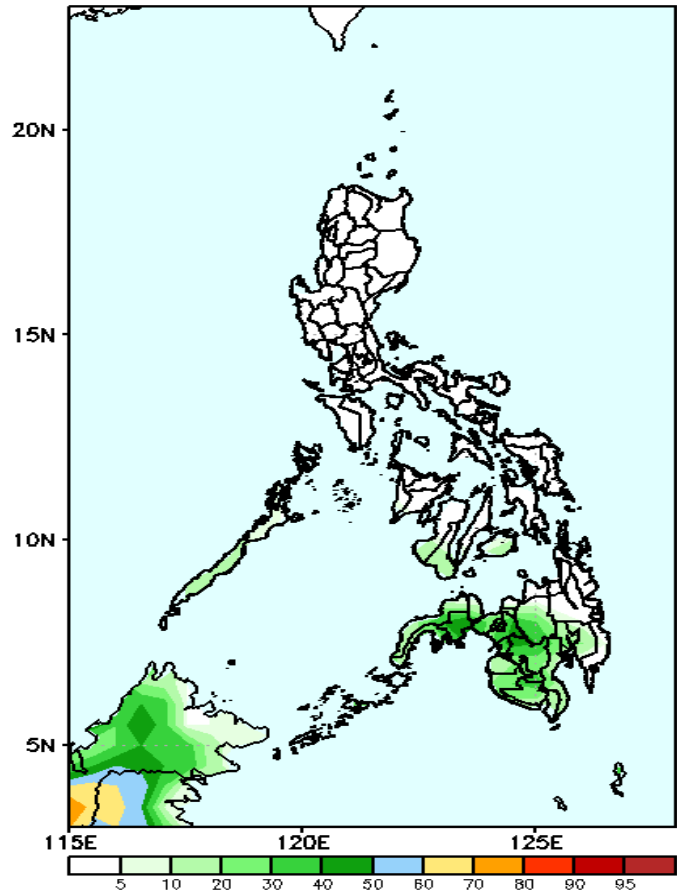
High to a very high probability to exceed 50mm of rainfall over most parts of western Mindanao and CAR; moderate to high probability in parts of Central Luzon, Negros, Bohol, rest of Mindanao, Antique, Samar, and Iloilo while low chance over the rest of the country.

# Exceedance Probability > 100/150/200 mm

Week 1: July 07-13, 2023

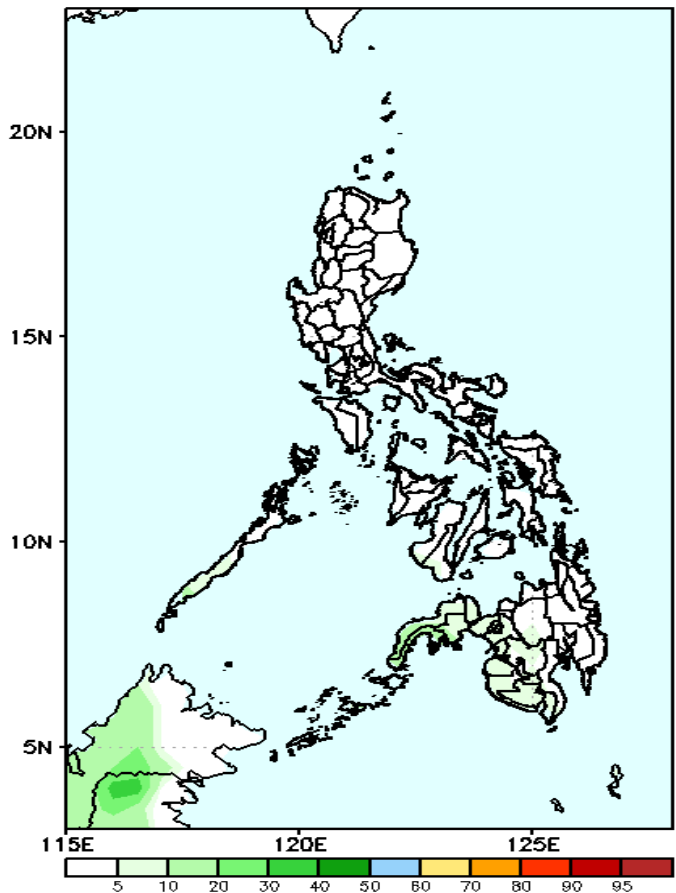
- Very high probability
- High Probability
- Moderate Probability
- Low Probability

GEFS Week-1 Exceedance Prob. > 100  
Valid: 20230707 – 20230713



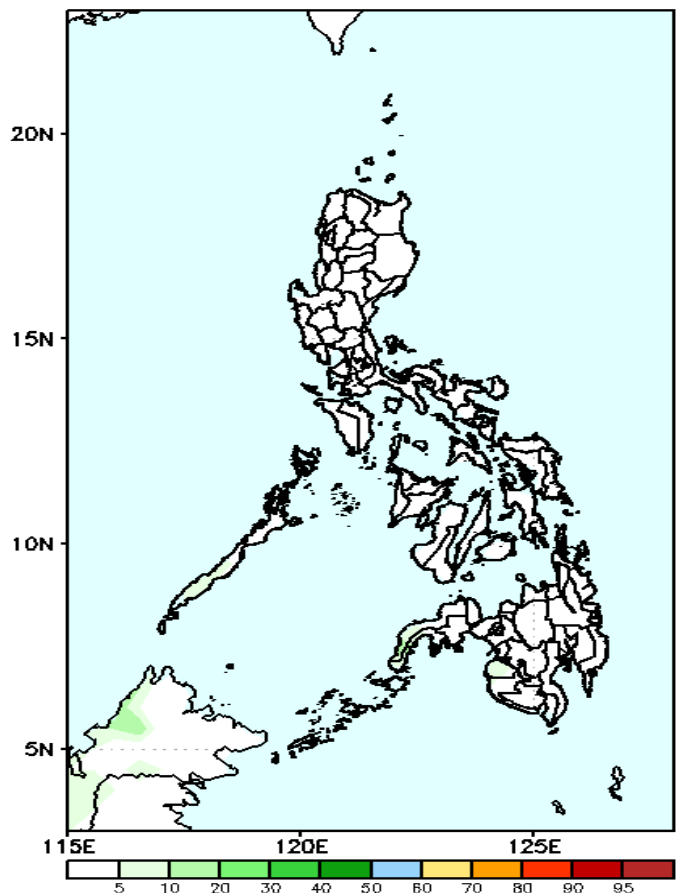
Low probability to exceed 100mm of rainfall over the rest of the country.

GEFS Week-1 Exceedance Prob. > 150mm  
Valid: 20230707 – 20230713



Low probability to exceed 150mm of rainfall over the rest of the country.

GEFS Week-1 Exceedance Prob. > 200mm  
Valid: 20230707 – 20230713



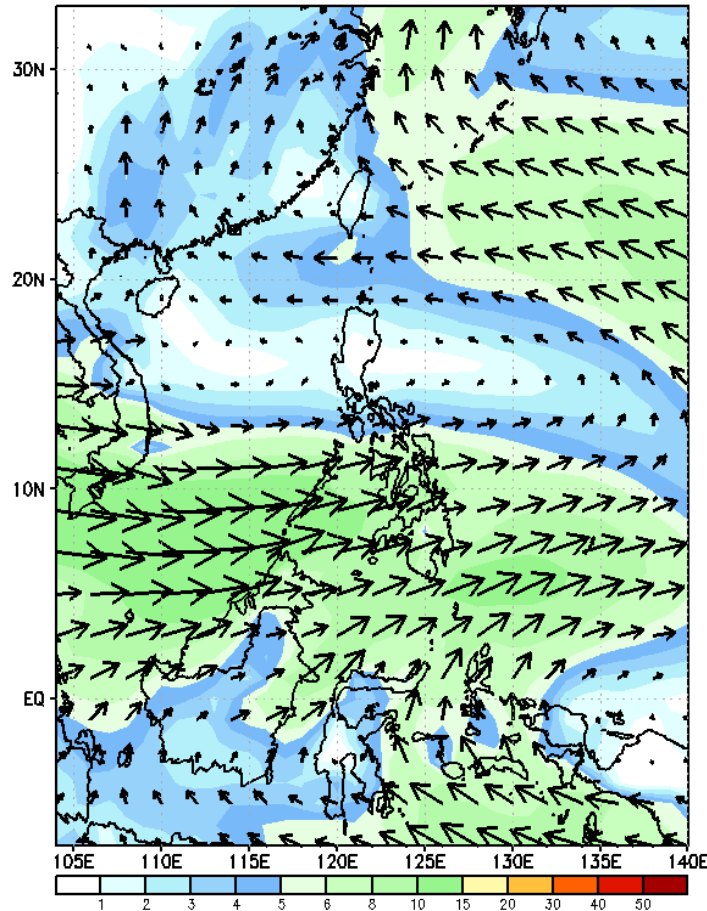
Low probability to exceed 200mm of rainfall over the rest of the country.



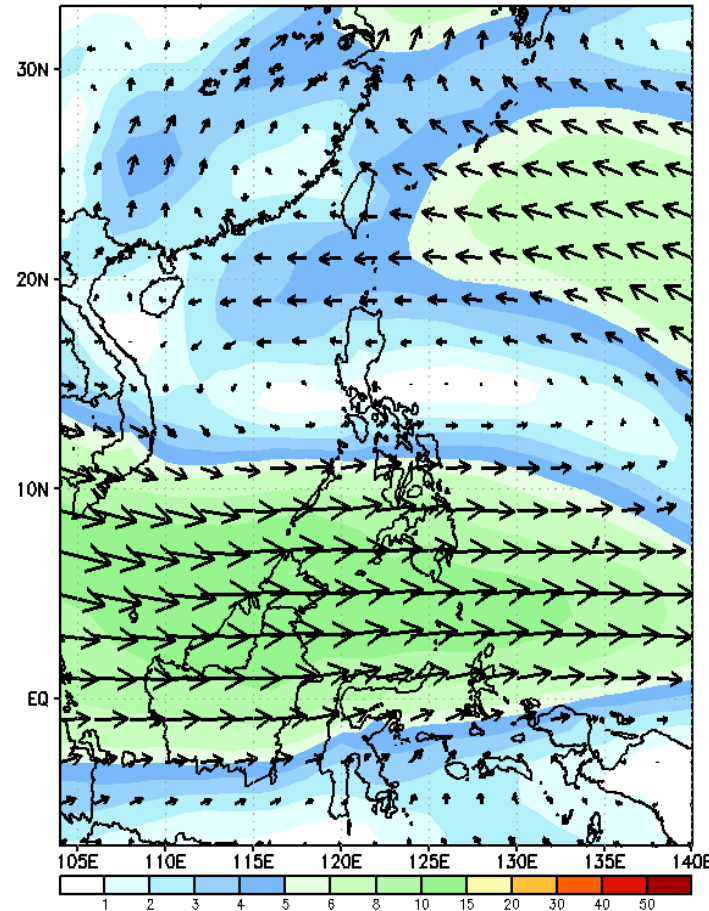
# GEFS Week-2 Forecasts: Wind Forecast

Week 2: July 10-16, 2023

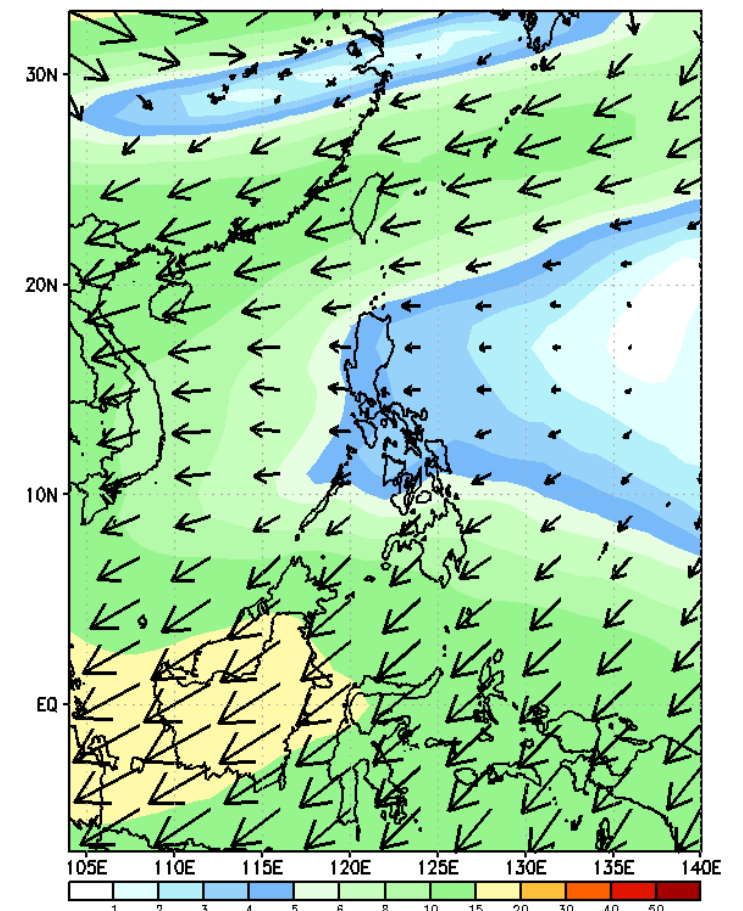
GEFS Week-2 850-hPa Wind Total  
Valid: 20230714 - 20230720



GEFS Week-2 700-hPa Wind Total  
Valid: 20230714 - 20230720

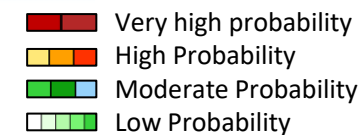


GEFS Week-2 200-hPa Wind Total  
Valid: 20230714 - 20230720



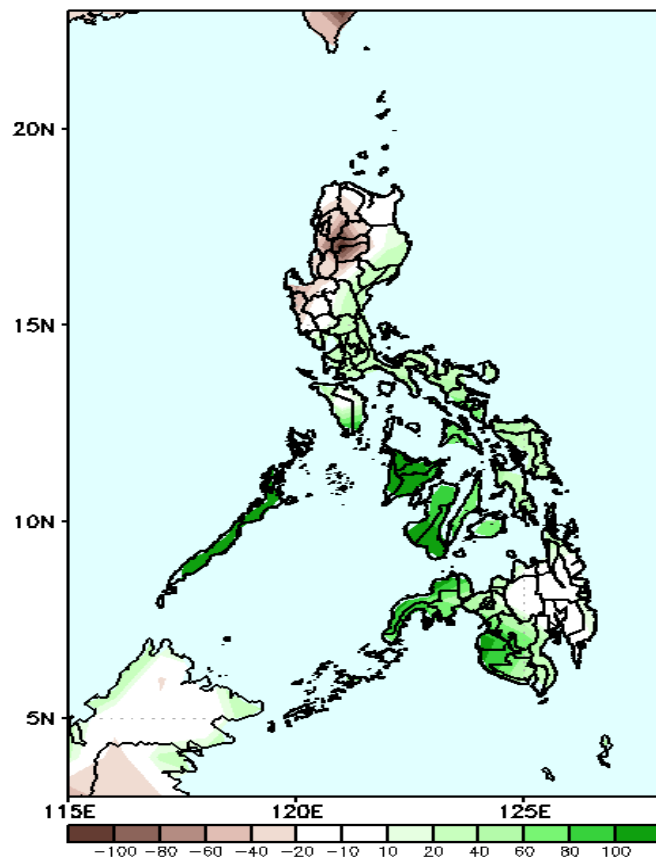
Southwest Monsoon is forecasted to affect most parts of the country

# Precipitation Anomaly and Exceedance Probability > 25/50 mm



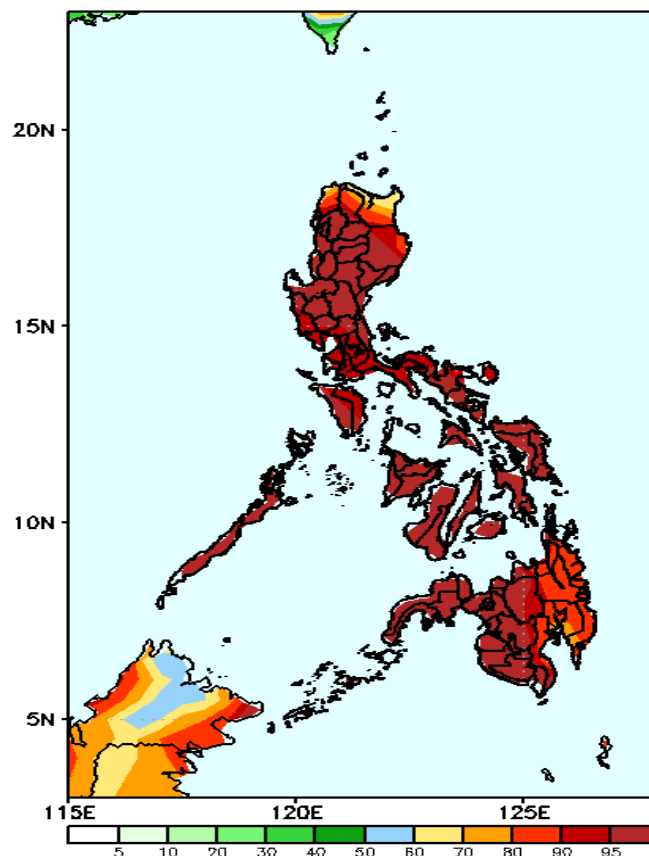
Week 2: July 14-20, 2023

GEFS Week-2 Precip Anomaly  
Valid: 20230714 - 20230720



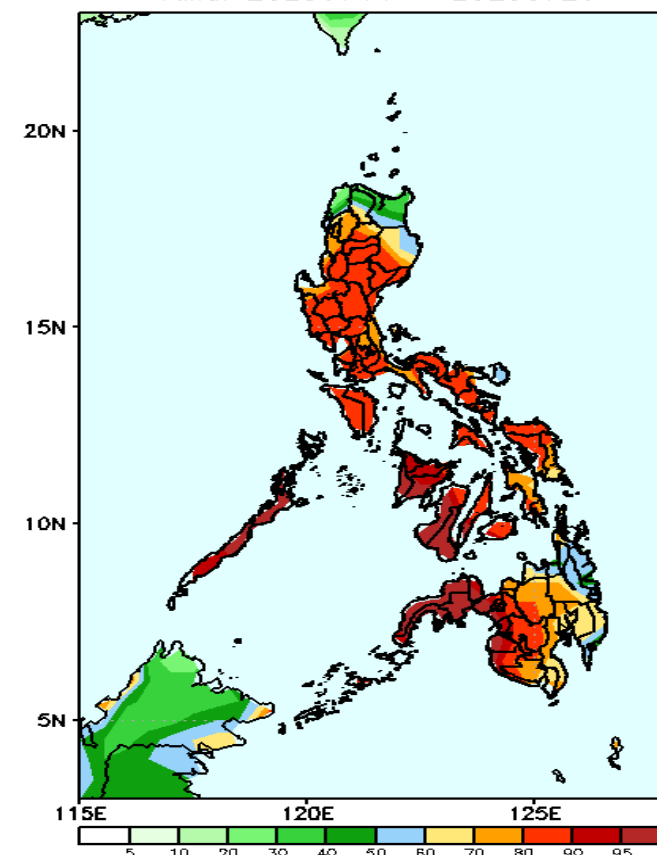
Increase of rainfall of more than 100mm is expected in most parts of Palawan, western Visayas, Zamboanga del Norte, Maguindanao and Sultan Kudarat; 20-100mm for the rest of the country except in CAR and Ilocos Region where 20-80mm rainfall deficit is more likely.

GEFS Week-2 Exceedance Prob. > 25mm  
Valid: 20230714 - 20230720



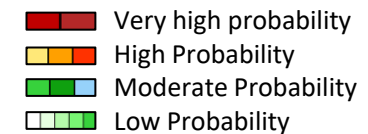
High to a very high probability to exceed 25mm of rainfall across the country.

GEFS Week-2 Exceedance Prob. > 50mm  
Valid: 20230714 - 20230720



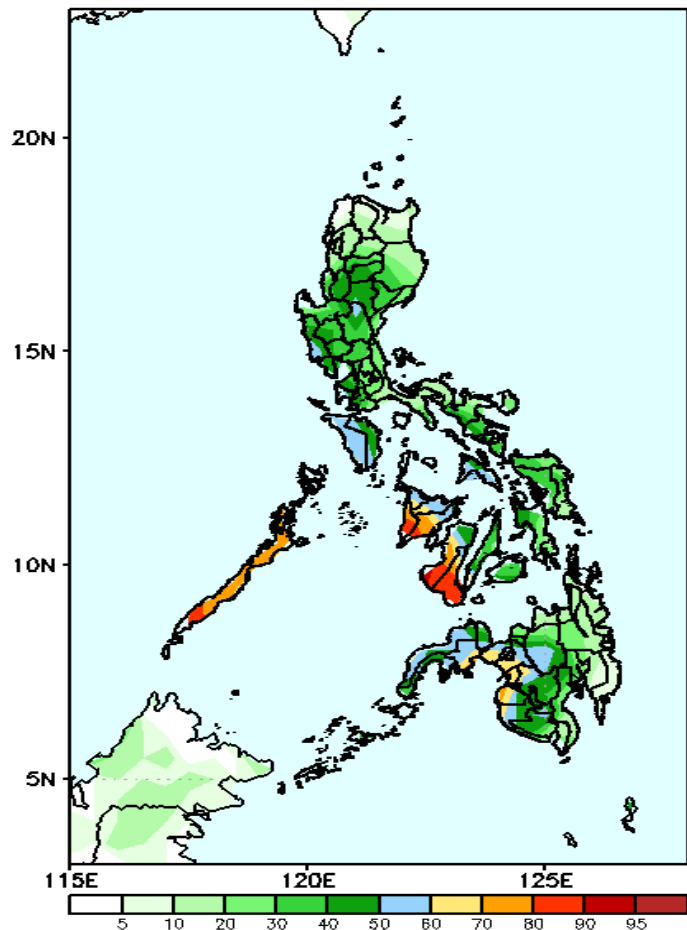
High to a very high probability to exceed 50mm of rainfall in most parts of the country except for moderate to high likelihood over Caraga, Davao region, Catanduanes, Isabela, Cagayan, Abra, and Ilocos Norte.

# Exceedance Probability > 100/150/200 mm



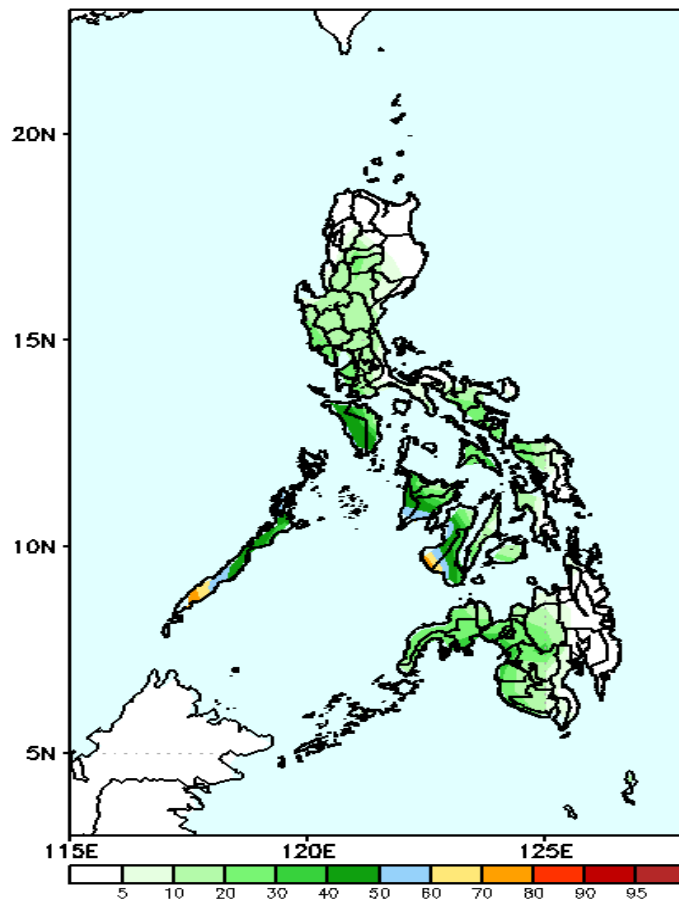
## Week 2: July 14-20, 2023

GEFS Week-2 Exceedance Prob. > 100mm  
Valid: 20230714 - 20230720



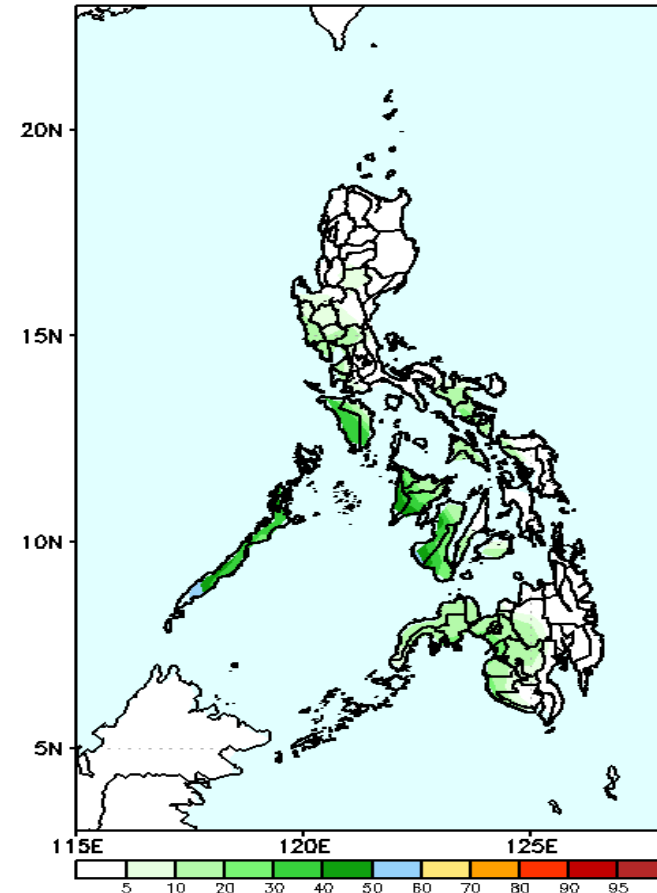
Moderate to High probability to exceed 100mm of rainfall over Masbate and the western portions of Central and Southern Luzon, Mindanao, and Visayas while low likelihood over the rest of the country.

GEFS Week-2 Exceedance Prob. > 150mm  
Valid: 20230714 - 20230720



Low probability to exceed 150mm of rainfall over the rest of the country.

GEFS Week-2 Exceedance Prob. > 200mm  
Valid: 20230714 - 20230720

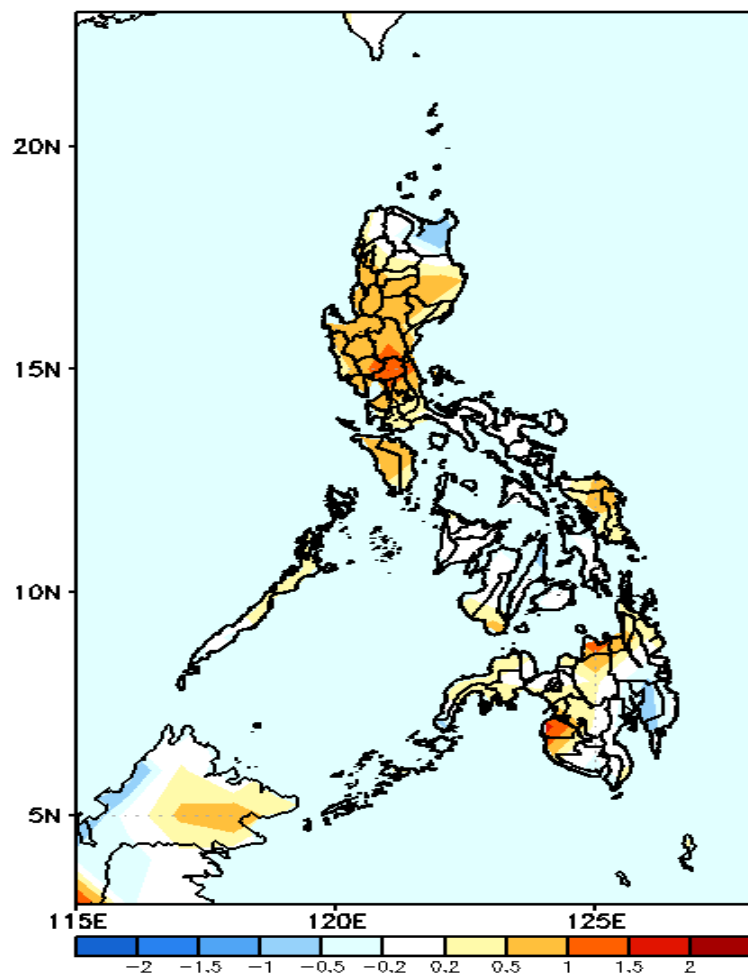


Low probability to exceed 200mm of rainfall over the rest of the country.



# GEFS Week-1 & 2 Forecasts: T2m Anomaly

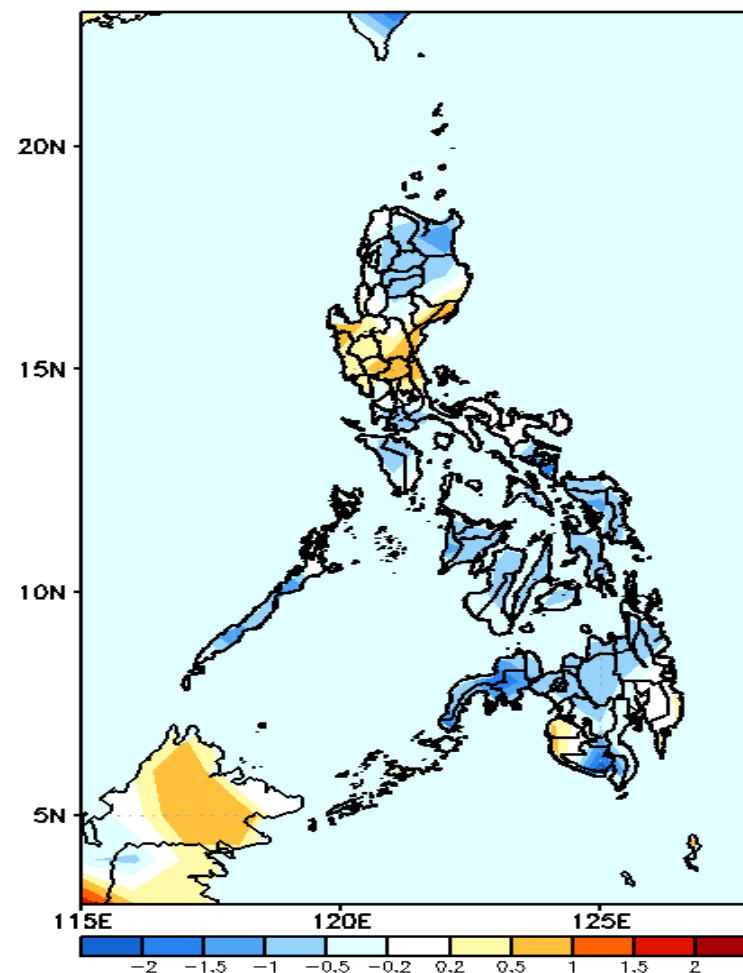
GEFS Week-1 T2m Anomaly  
Valid: 20230707 – 20230713



## 2m Temperature Week 1: July 07-13, 2023

Average to warmer than average surface air temperature will likely experience in most parts of the country.

GEFS Week-2 T2m Anomaly  
Valid: 20230714 – 20230720



## 2m Temperature Week 2: July 14-20, 2023

Average to cooler than average surface air temperature will likely experience in most parts of the country except in Central Luzon, Rizal and NCR where slightly warmer to warmer than average temperature is expected.