



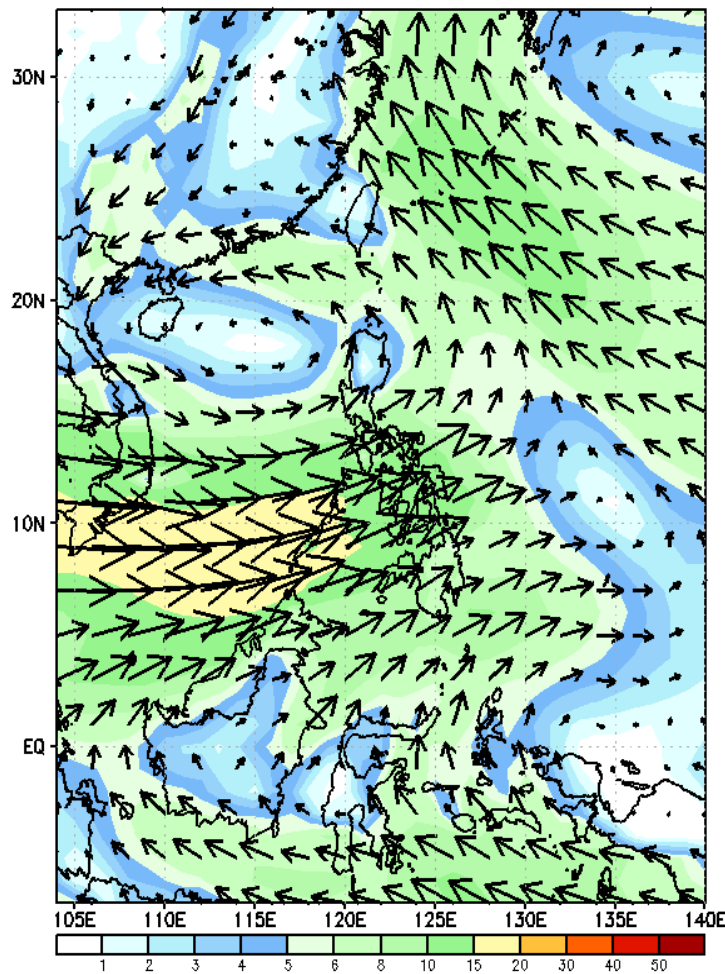
Week 1 & Week 2 Forecast for the Philippines using GEFS Model



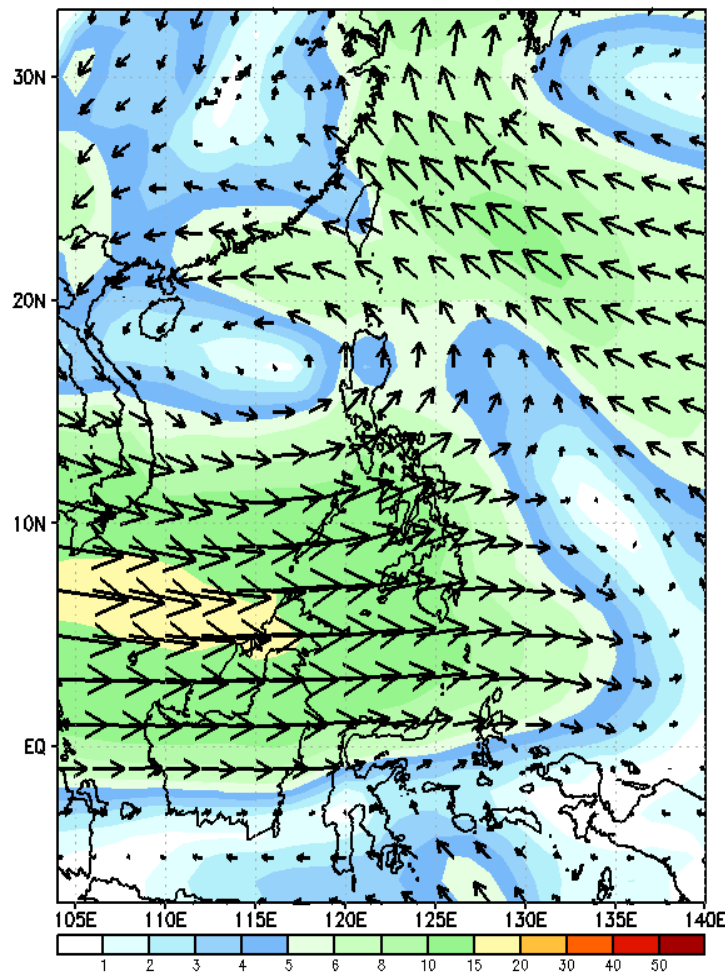
GEFS Week-1 Forecasts: Wind Forecast

Week 1: July 14-20, 2023

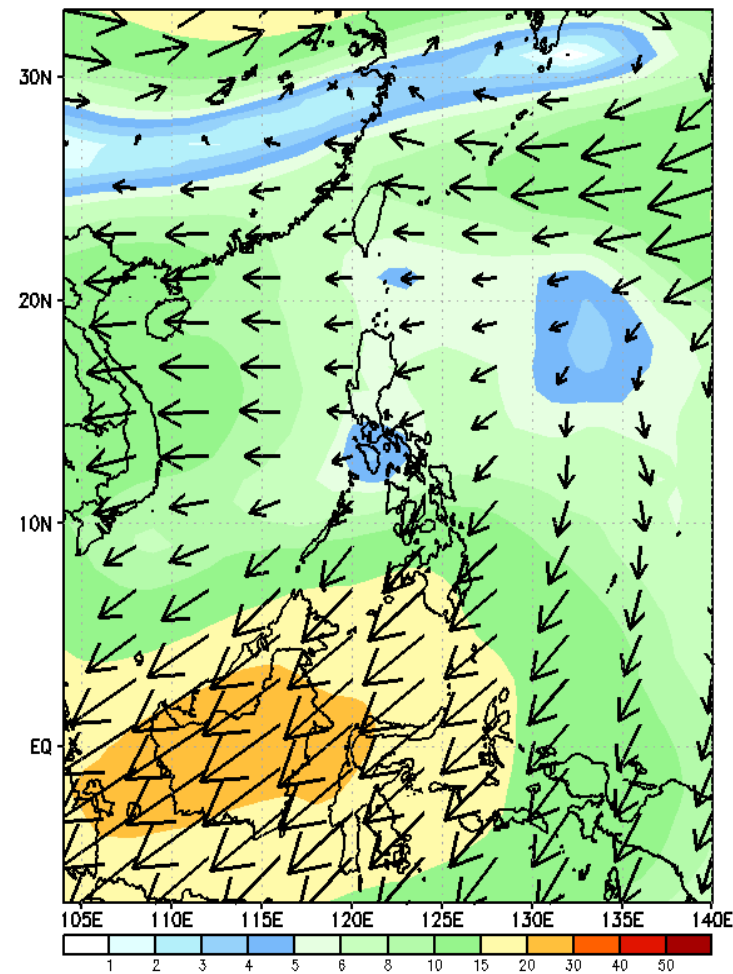
GEFS Week-1 850-hPa Wind Total
Valid: 20230714 - 20230720



GEFS Week-1 700-hPa Wind Total
Valid: 20230714 - 20230720



GEFS Week-1 200-hPa Wind Total
Valid: 20230714 - 20230720



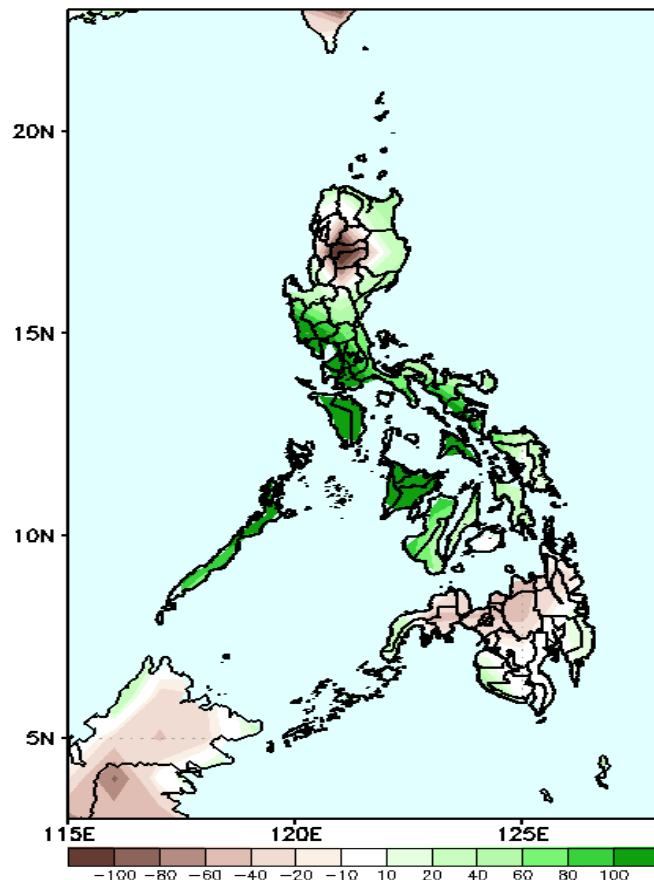
Easterlies will likely affect most parts of the country. SW monsoon affecting western section of Visayas and Mindanao.

Precipitation Anomaly and Exceedance Probability > 25/50 mm



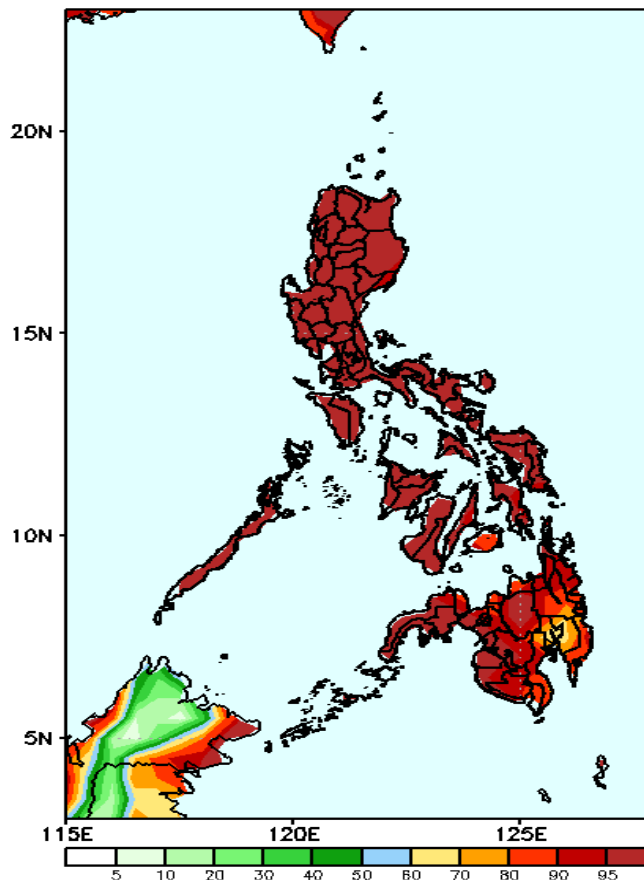
Week 1: July 14-20, 2023

GEFS Week-1 Precip Anomaly
Valid: 20230714 - 20230720



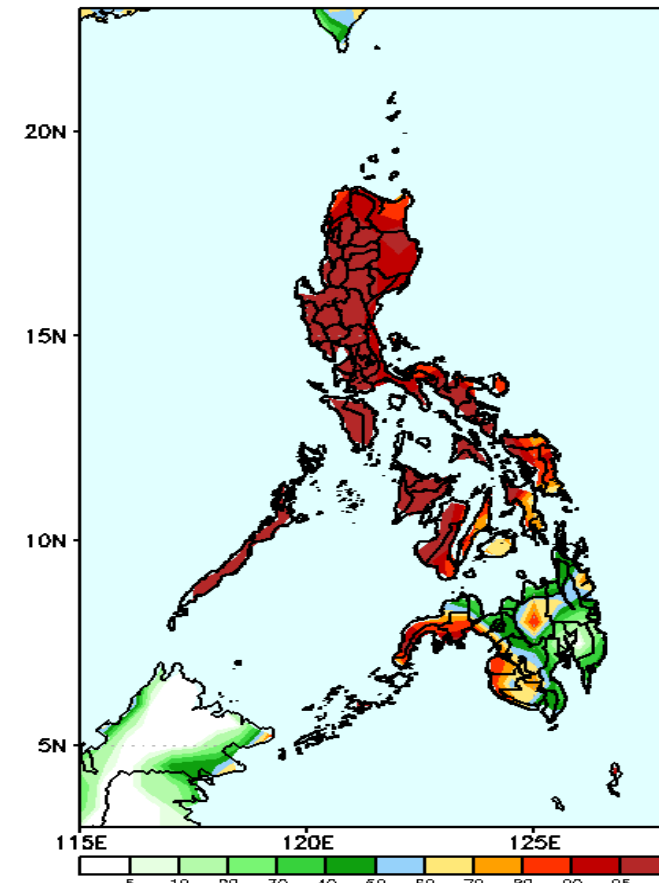
Increase of rainfall of more than 100mm is expected in most parts of Central and Southern Luzon and Panay Island; 40-90mm for the rest of Luzon and most of Visayas while Kalinga, Mt. Province, Ifugao and northern Mindanao will likely have 40-100mm rainfall deficit.

GEFS Week-1 Exceedance Prob. > 25mm
Valid: 20230714 - 20230720



High to a very high probability to exceed 25mm of rainfall across the country.

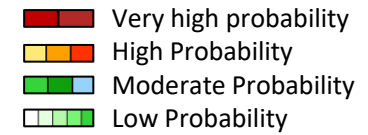
GEFS Week-1 Exceedance Prob. > 50mm
Valid: 20230714 - 20230720



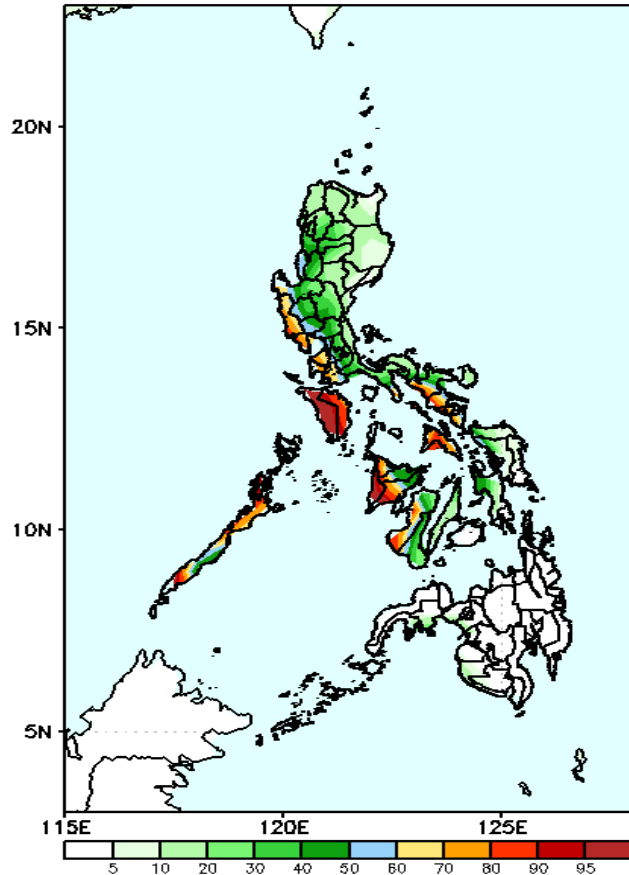
High to a very high probability to exceed 50mm of rainfall in most parts of the country except for a moderate to high probability over Mindanao.

Exceedance Probability > 100/150/200 mm

Week 1: July 14-20, 2023

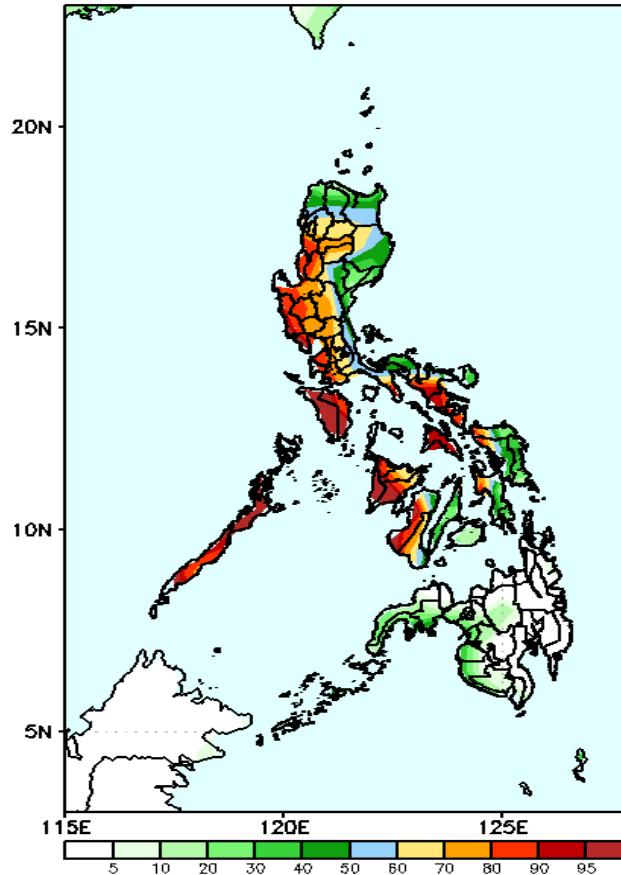


GEFS Week-1 Exceedance Prob. > 150mm
Valid: 20230714 - 20230720



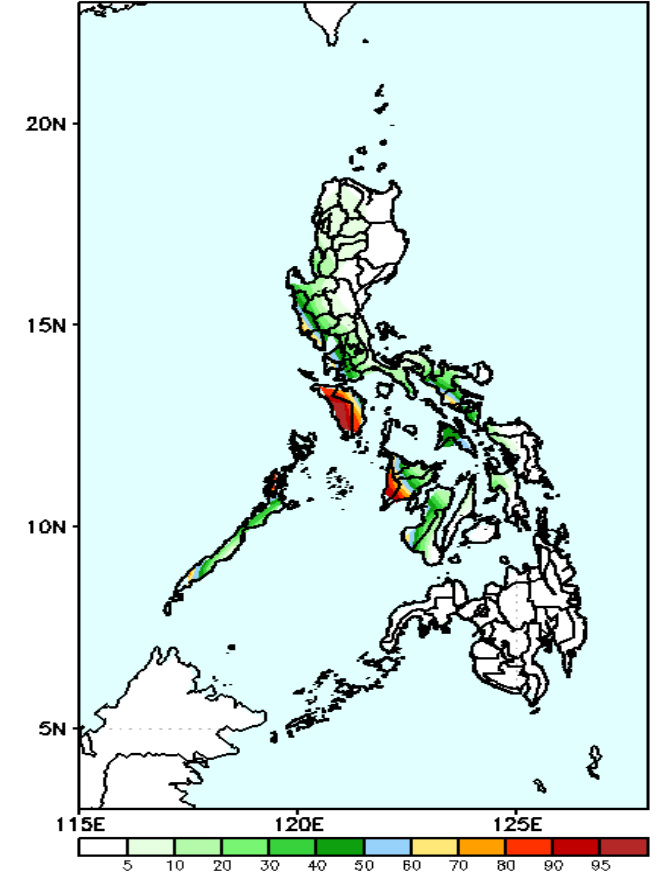
Moderate to High probability to exceed 100mm of rainfall in most parts of Luzon and Western and Eastern Visayas while low to moderate chance over Mindanao and the rest of Visayas.

GEFS Week-1 Exceedance Prob. > 100mm
Valid: 20230714 - 20230720



Moderate to High probability to exceed 150mm of rainfall over the western sections of Central and Southern Luzon and Western Visayas while low chance over the rest of the country.

GEFS Week-1 Exceedance Prob. > 200mm
Valid: 20230714 - 20230720

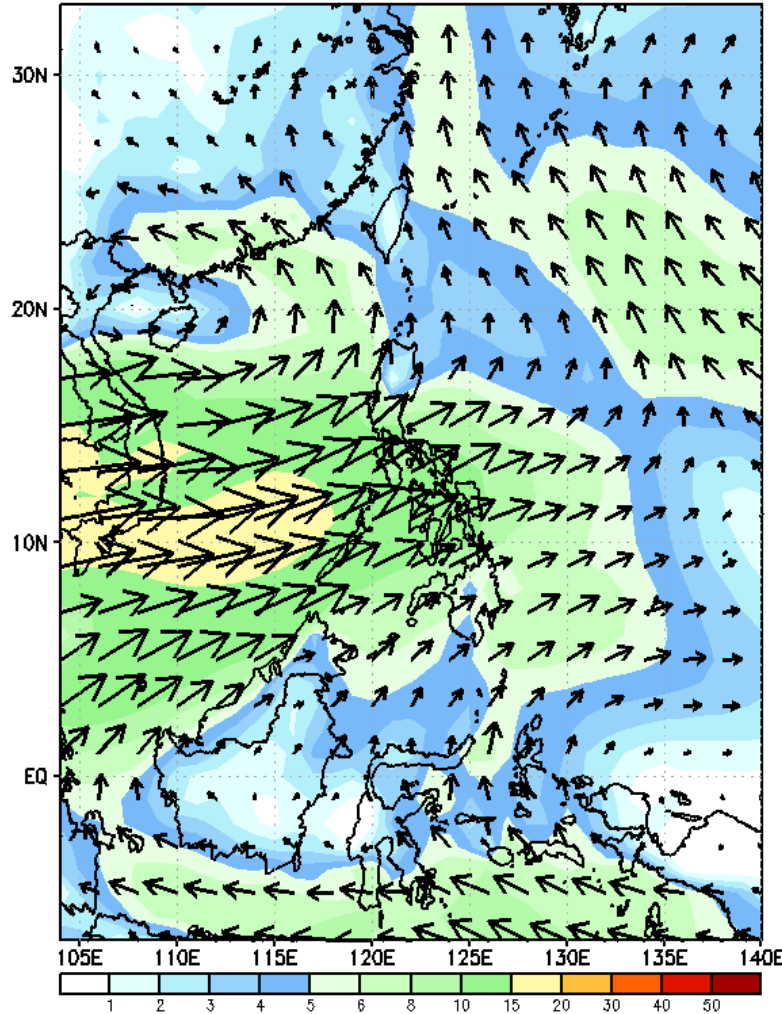


Moderate to High probability to exceed 200mm of rainfall over the western sections of Central and Southern Luzon and Western Visayas while low chance over the rest of the country.

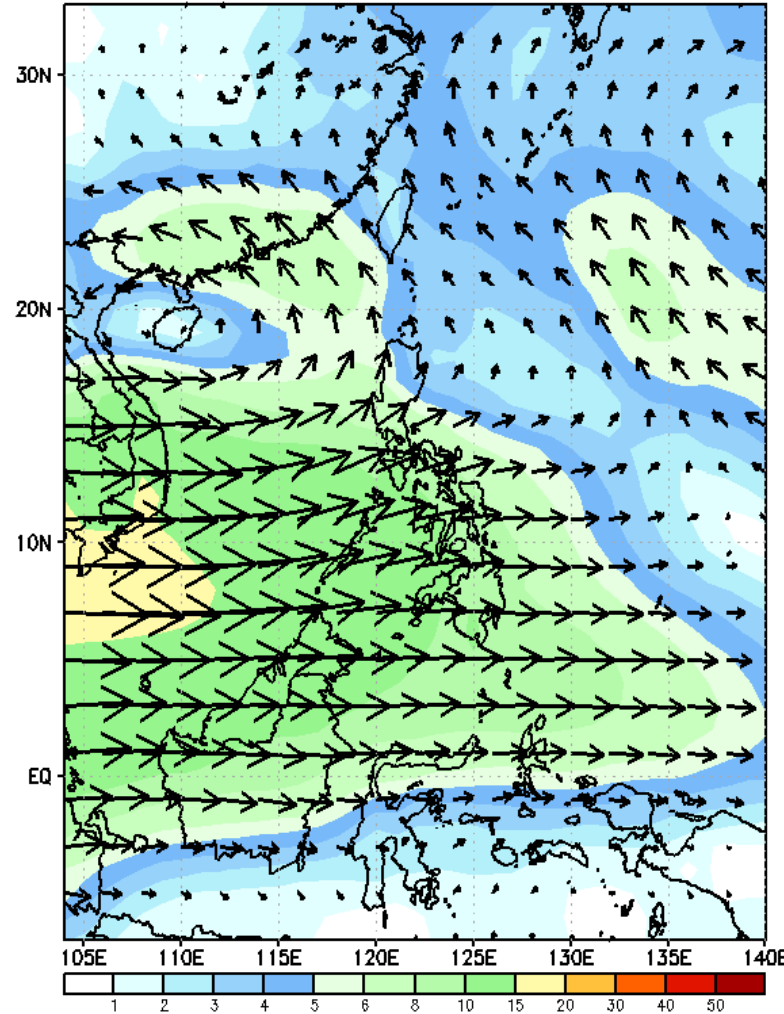
GEFS Week-2 Forecasts: Wind Forecast

Week 2: July 21-27, 2023

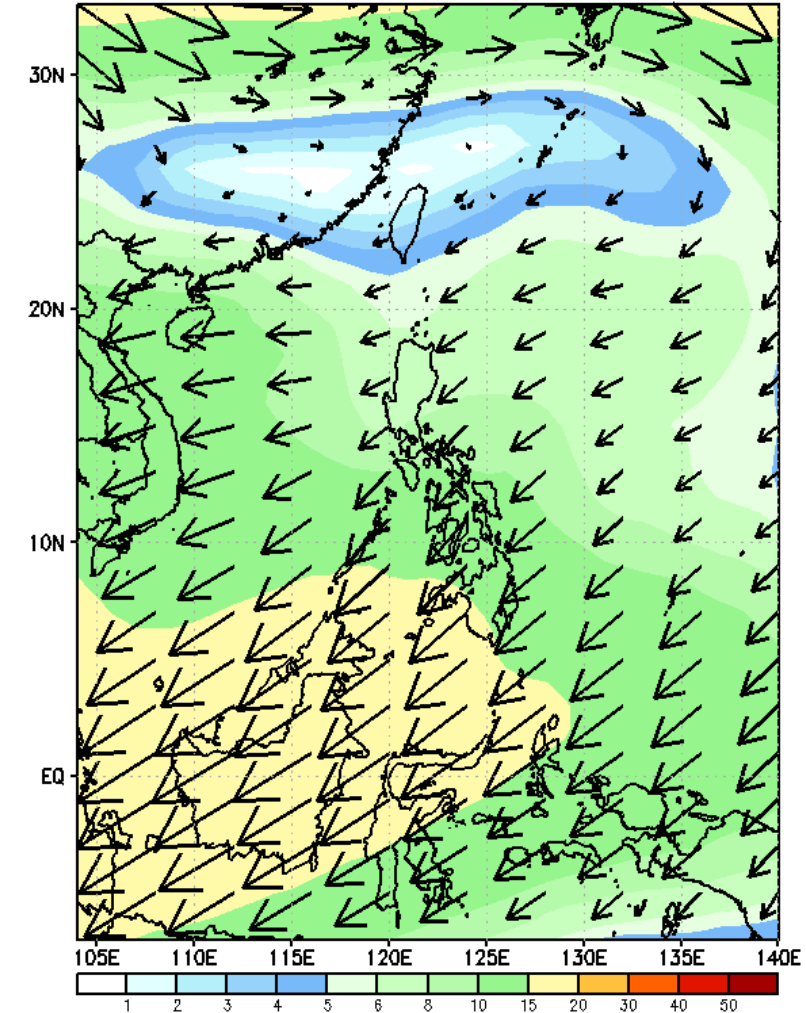
GEFS Week-2 850-hPa Wind Total
Valid: 20230721 - 20230727



GEFS Week-2 700-hPa Wind Total
Valid: 20230721 - 20230727



GEFS Week-2 200-hPa Wind Total
Valid: 20230721 - 20230727



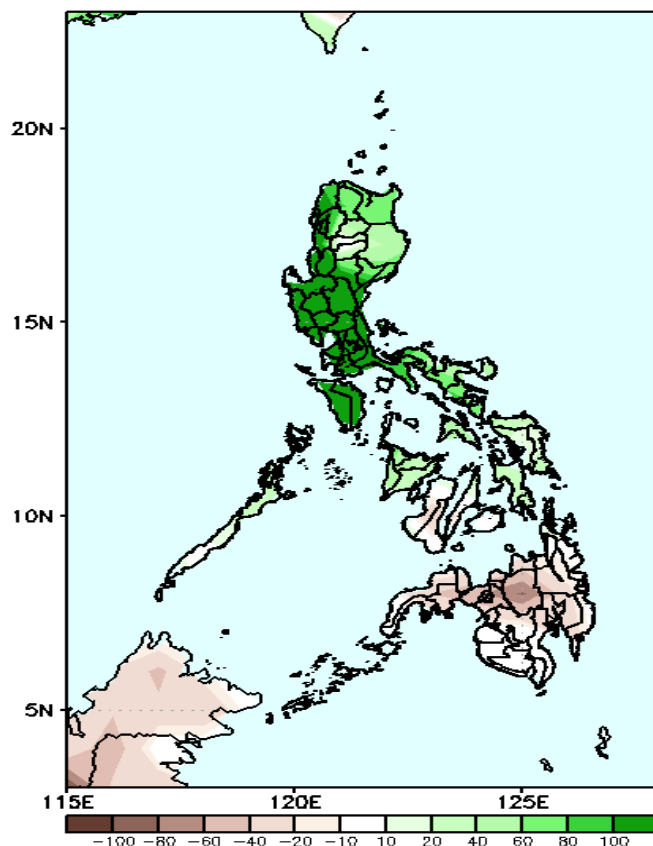
Southwest Monsoon is forecasted to affect most parts of the country

Precipitation Anomaly and Exceedance Probability > 25/50 mm

- Very high probability
- High Probability
- Moderate Probability
- Low Probability

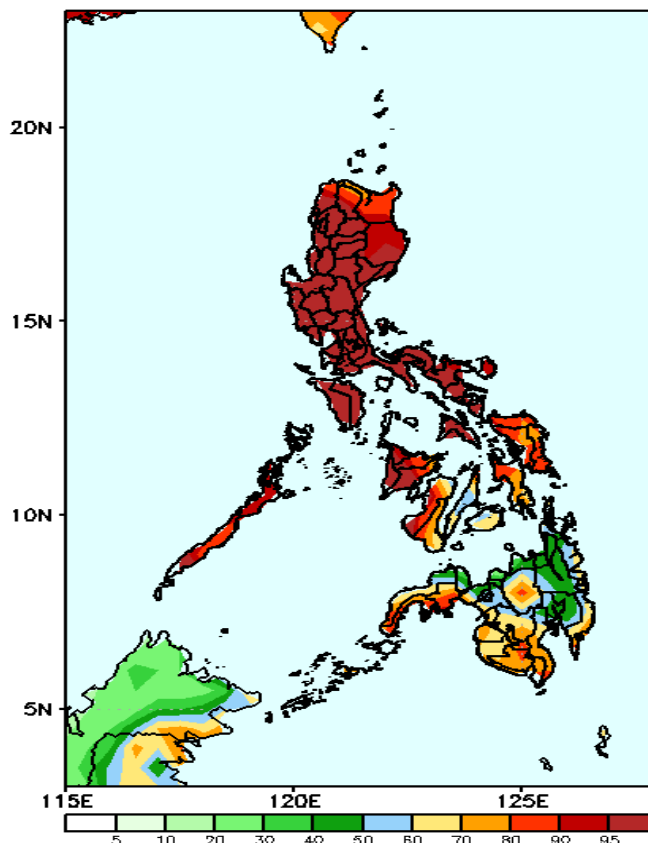
Week 2: July 21-27, 2023

GEFS Week-2 Precip Anomaly
Valid: 20230721 - 20230727



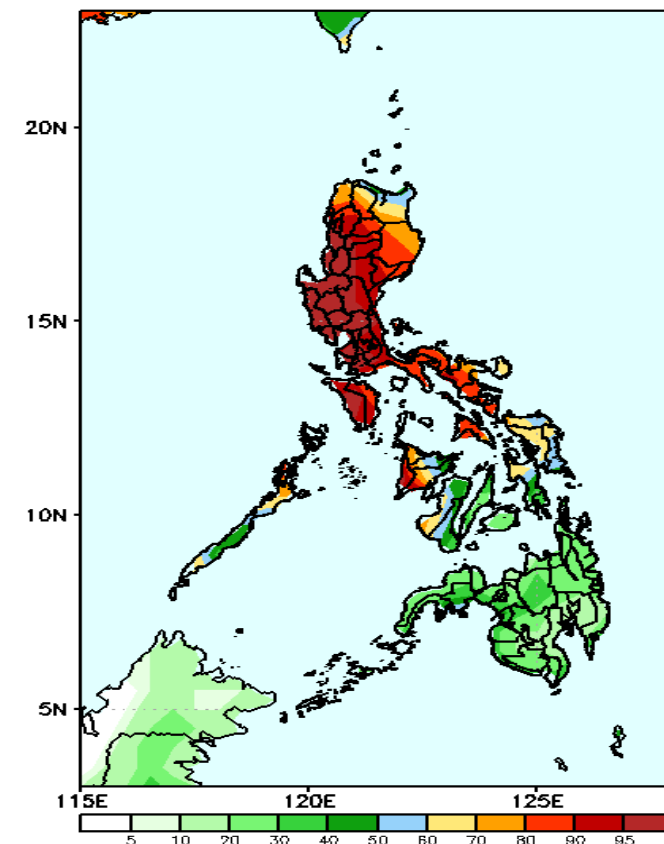
Increase of rainfall of more than 100mm is expected in most parts of Ilocos Region, Central and Southern Luzon; 40-90mm for the rest of Luzon and most of Visayas while Mindanao will likely have 20-80mm rainfall deficit.

GEFS Week-2 Exceedance Prob. > 25mm
Valid: 20230721 - 20230727



High to very high probability to exceed 25mm of rainfall in Luzon and Western Visayas while moderate to high over the rest of the country.

GEFS Week-2 Exceedance Prob. > 50mm
Valid: 20230721 - 20230727



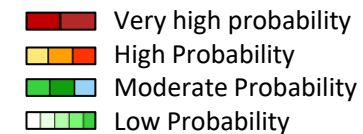
High to very high probability to exceed 50mm of rainfall in most parts of Luzon and Panay, moderate to high likelihood over the rest of Luzon and Visayas, and low to moderate chance over Mindanao.

ng
SA

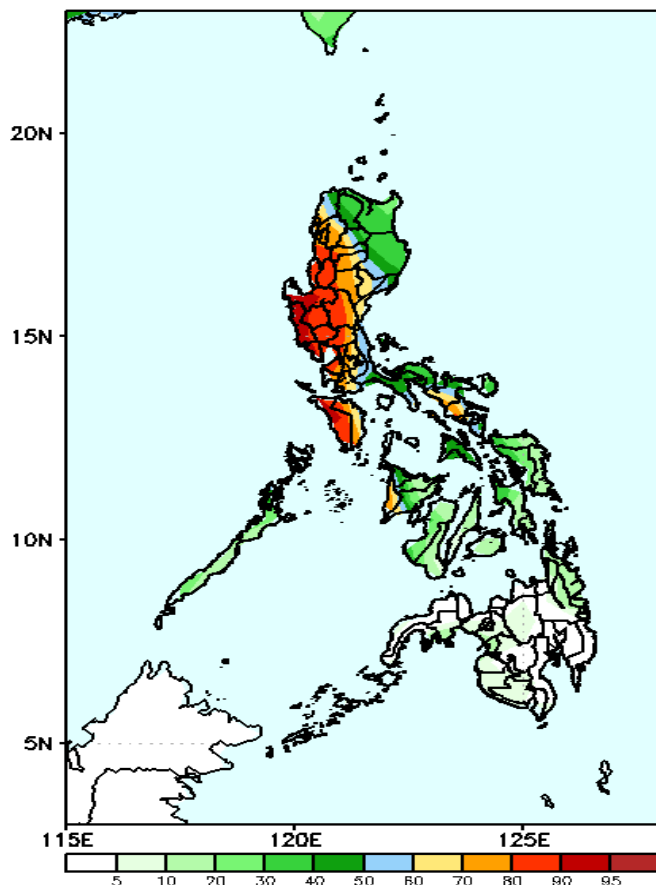


Exceedance Probability > 100/150/200 mm

Week 2: July 21-27, 2023

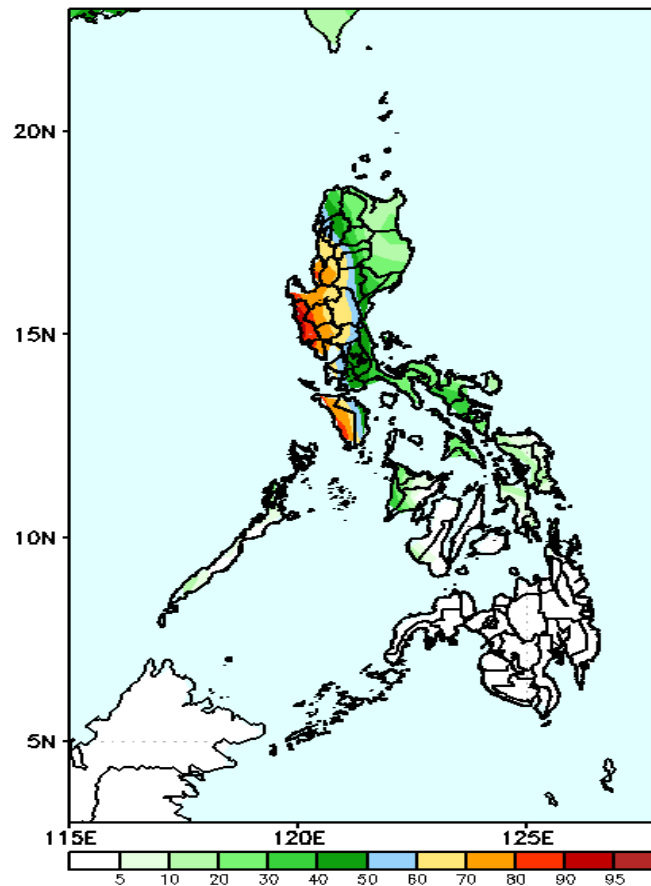


GEFS Week-2 Exceedance Prob. > 100mm
Valid: 20230721 - 20230727



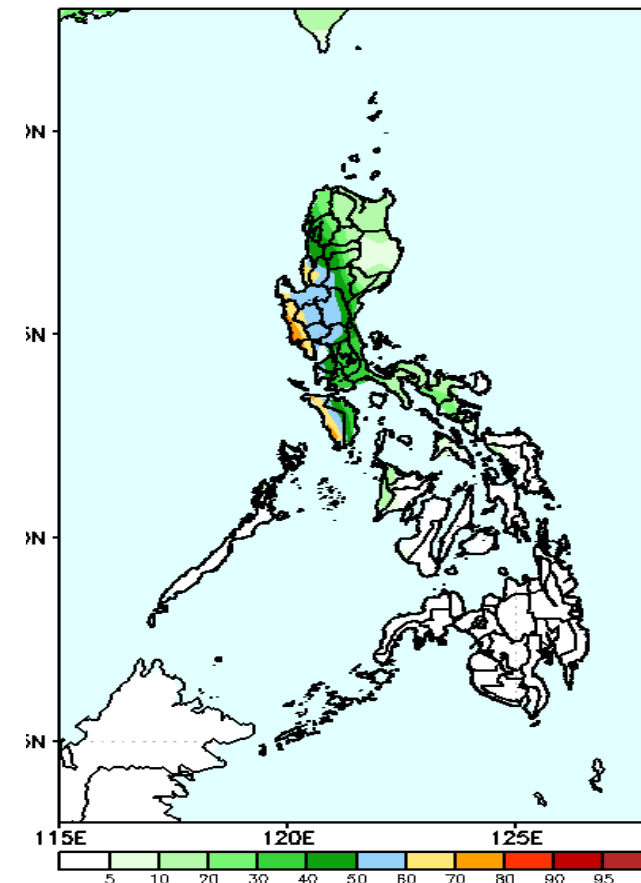
High to very high probability to exceed 100mm of rainfall over the western section of Central Luzon; Moderate to high likelihood over Western Visayas and the rest of Luzon except for Palawan and Cagayan while low chance over the rest of the country.

GEFS Week-2 Exceedance Prob. > 150mm
Valid: 20230721 - 20230727



Moderate to high probability to exceed 150mm of rainfall over the western section of Luzon except for Palawan and Ilocos Norte while low to moderate chance over the rest of the country.

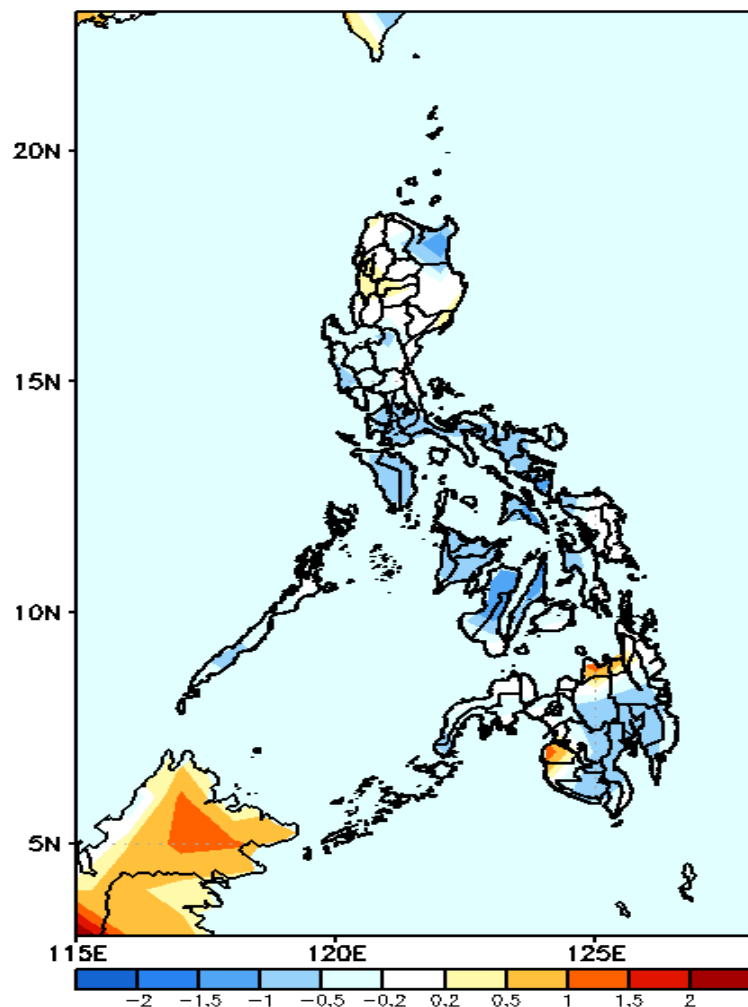
IFS Week-2 Exceedance Prob. > 200mm
Valid: 20230721 - 20230727



Moderate to high probability to exceed 200mm of rainfall over the western section of Central and Southern Luzon except for Palawan while low chance over the rest of the country.

GEFS Week-1 & 2 Forecasts: T2m Anomaly

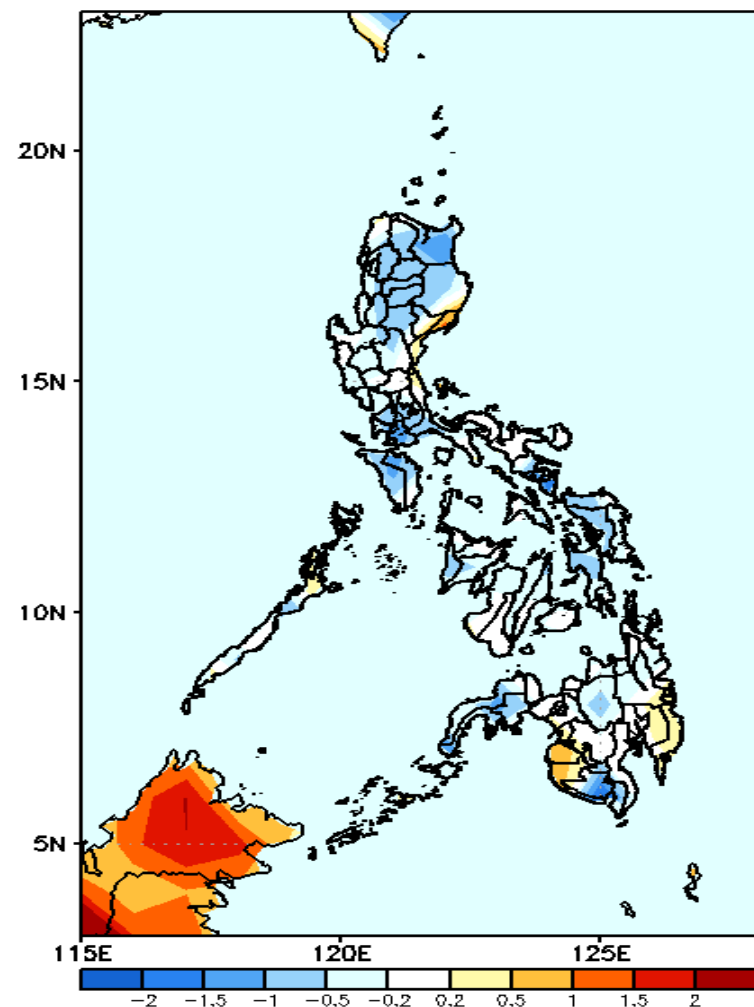
GEFS Week-1 T2m Anomaly
Valid: 20230714 – 20230720



2m Temperature Week 1: July 14-20, 2023

Average to cooler than average surface air temperature will likely experience in most parts of the country except in Misamis Oriental and Maguindanao -warmer.

GEFS Week-2 T2m Anomaly
Valid: 20230721 – 20230727



2m Temperature Week 2: July 21-27, 2023

Average to cooler than average surface air temperature will likely experience in most parts of the country except in Baler, Sultan Kudarat & Maguindanao –slightly warmer.