



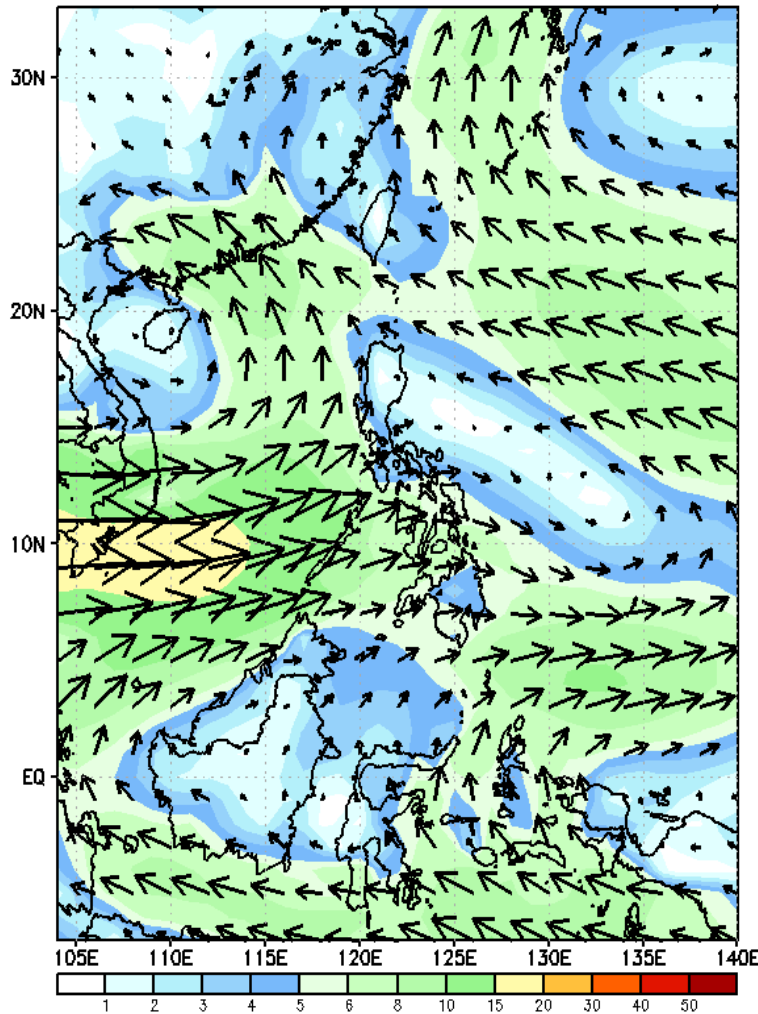
Week 1 & Week 2 Forecast for the Philippines using GEFS Model



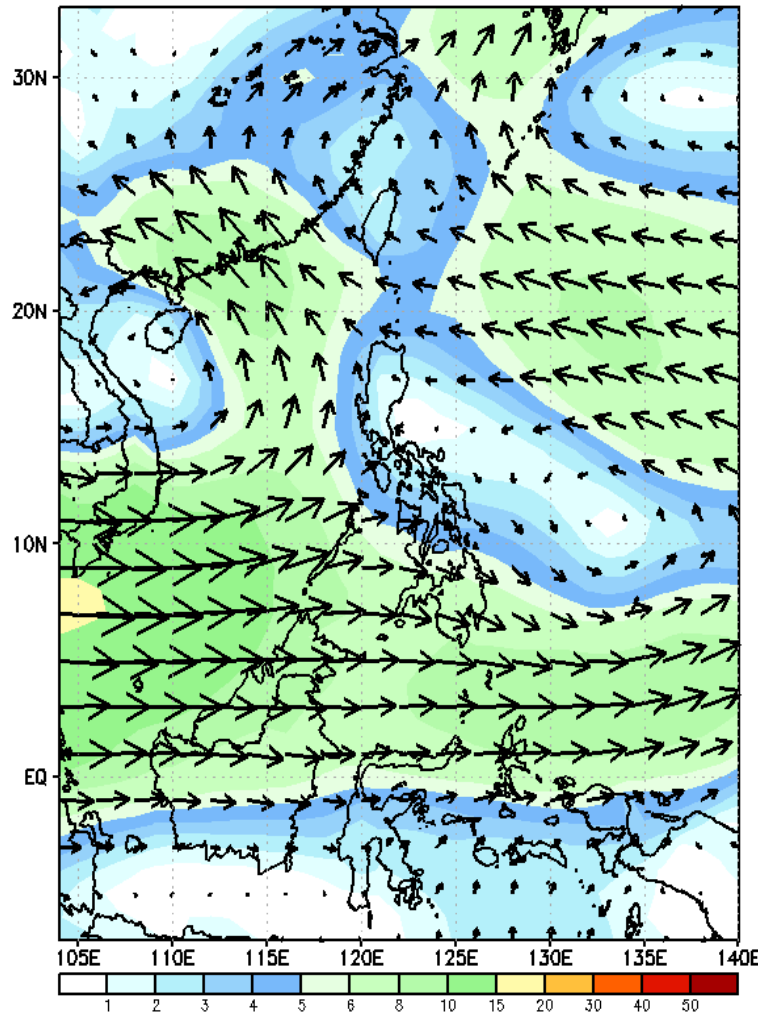
GEFS Week-1 Forecasts: Wind Forecast

Week 1: July 17-23, 2023

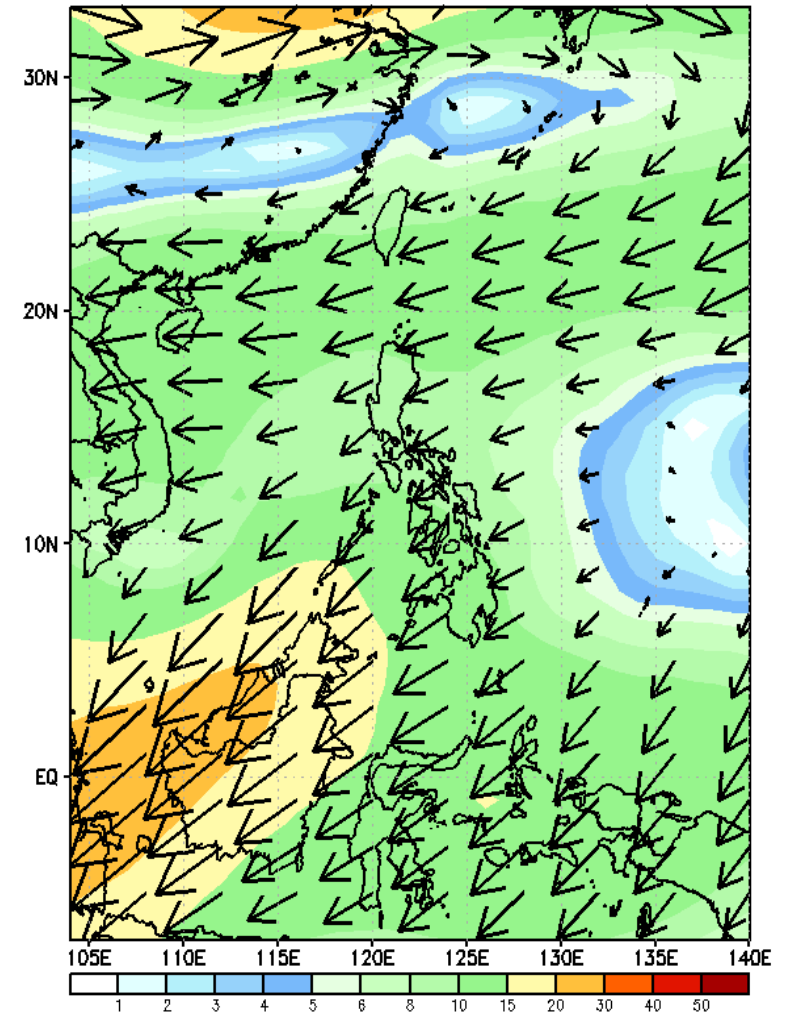
GEFS Week-1 850-hPa Wind Total
Valid: 20230717 - 20230723



GEFS Week-1 700-hPa Wind Total
Valid: 20230717 - 20230723



GEFS Week-1 200-hPa Wind Total
Valid: 20230717 - 20230723



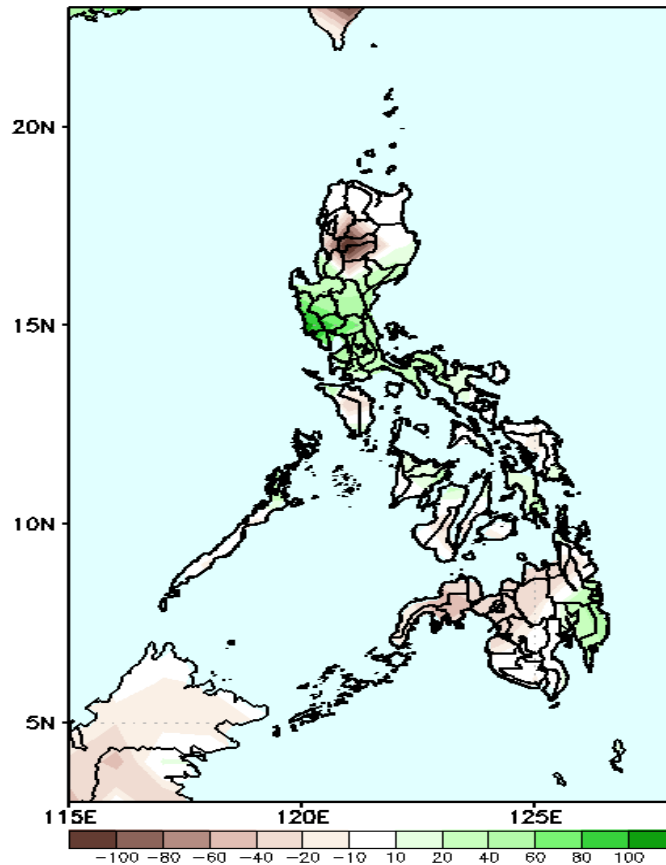
Southwest Monsoon is forecasted to prevail in most parts of the country.

Precipitation Anomaly and Exceedance Probability > 25/50 mm

- Very high probability
- High Probability
- Moderate Probability
- Low Probability

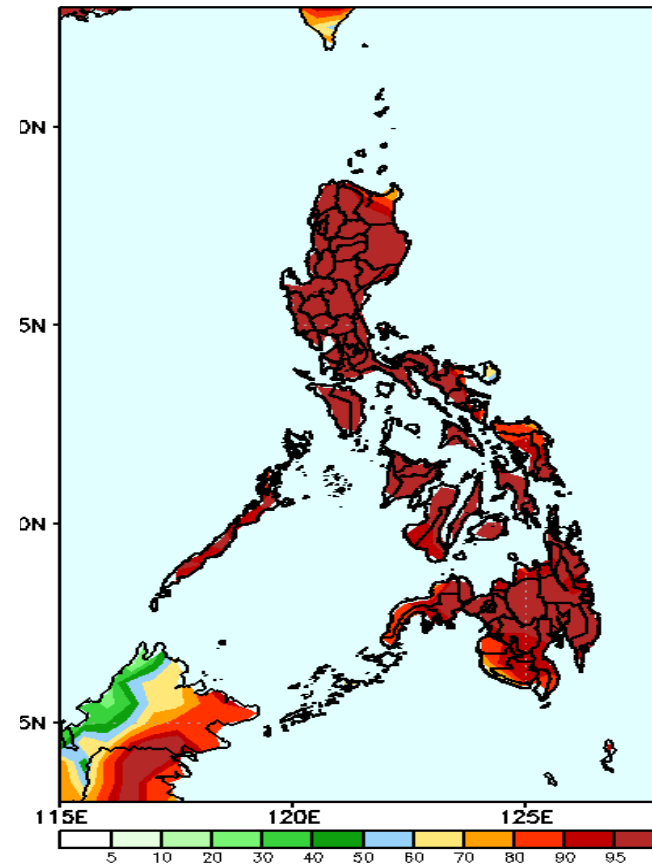
Week 1: July 17-23, 2023

GEFS Week-1 Precip Anomaly
Valid: 20230717 - 20230723



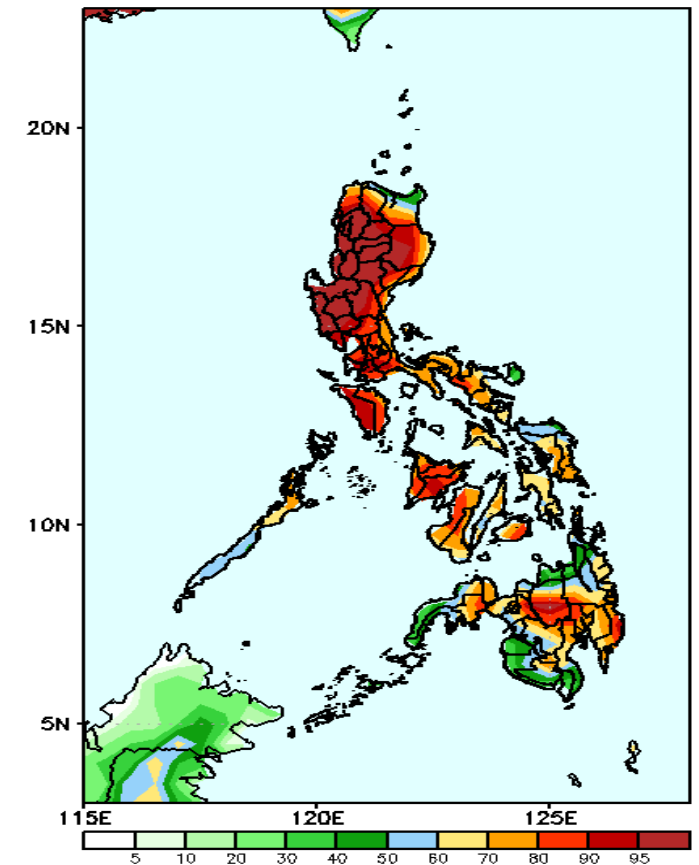
Increase of rainfall of 40-100mm in most parts of Central & Southern Luzon, and Davao Region while most of CAR, Visayas and the rest of Mindanao will likely have 20-100mm rainfall deficit.

GEFS Week-1 Exceedance Prob. > 25mm
Valid: 20230717 - 20230723



High to a very high probability to exceed 25mm of rainfall across the country.

GEFS Week-1 Exceedance Prob. > 50mm
Valid: 20230717 - 20230723

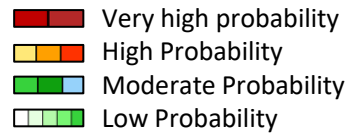


High to a very high probability to exceed 50mm of rainfall in most parts of Luzon while moderate to high probability over the rest of the country.

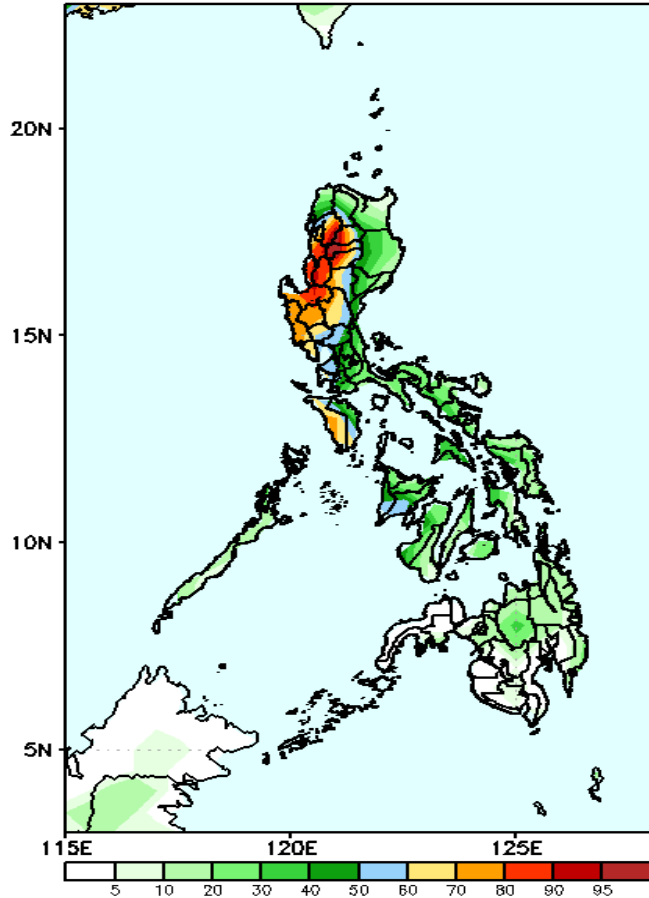


Exceedance Probability > 100/150/200 mm

Week 1: July 17-23, 2023

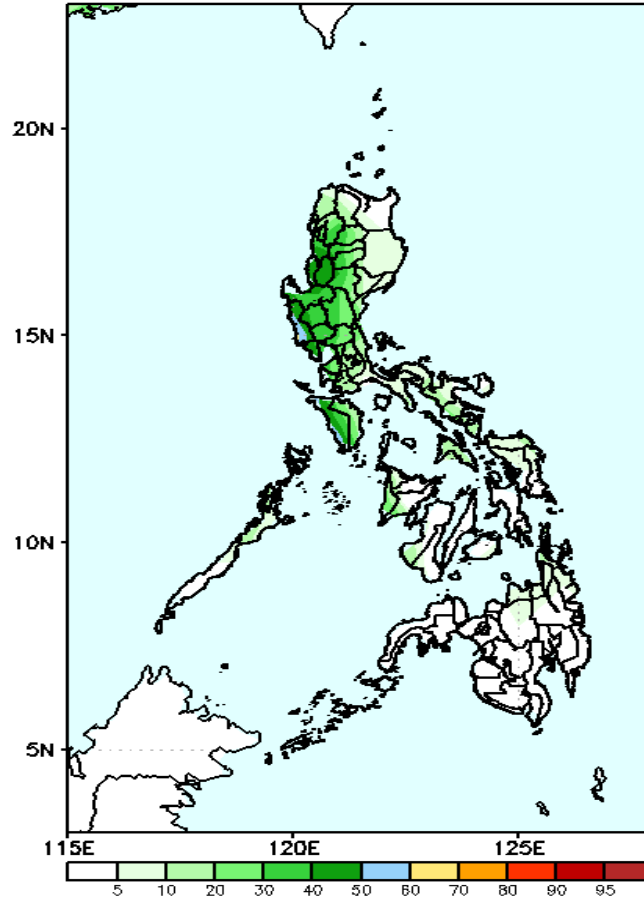


GEFS Week-1 Exceedance Prob. > 100mm
Valid: 20230717 - 20230723



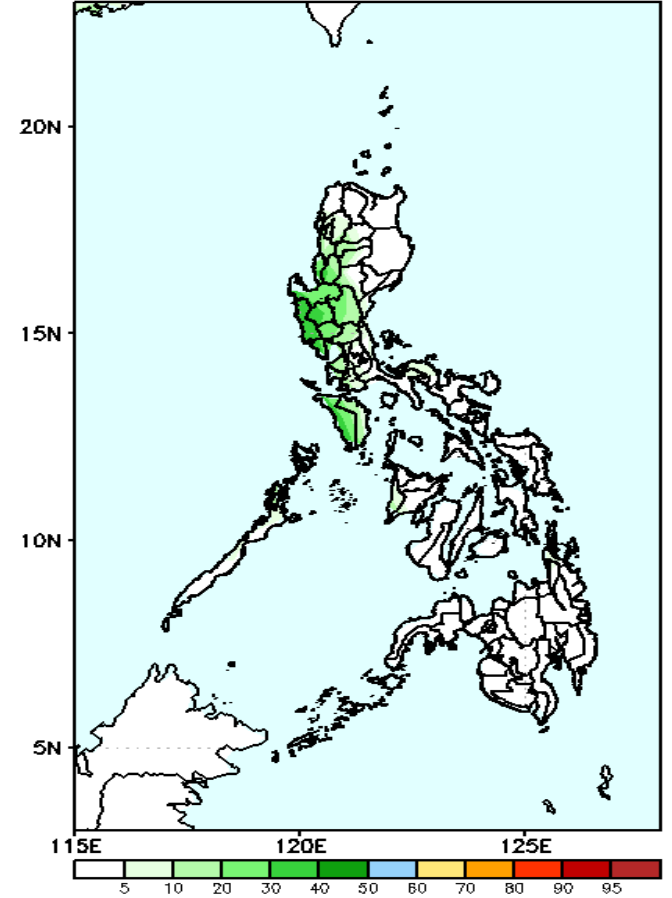
Moderate to high probability to exceed 100mm of rainfall over the western section of Luzon except for Palawan and Ilocos Norte while low to moderate chance over the rest of the country.

GEFS Week-1 Exceedance Prob. > 150mm
Valid: 20230717 - 20230723



Moderate probability to exceed 150mm of rainfall over the western section of Central Luzon while low chance over the rest of the country.

GEFS Week-1 Exceedance Prob. > 200mm
Valid: 20230717 - 20230723

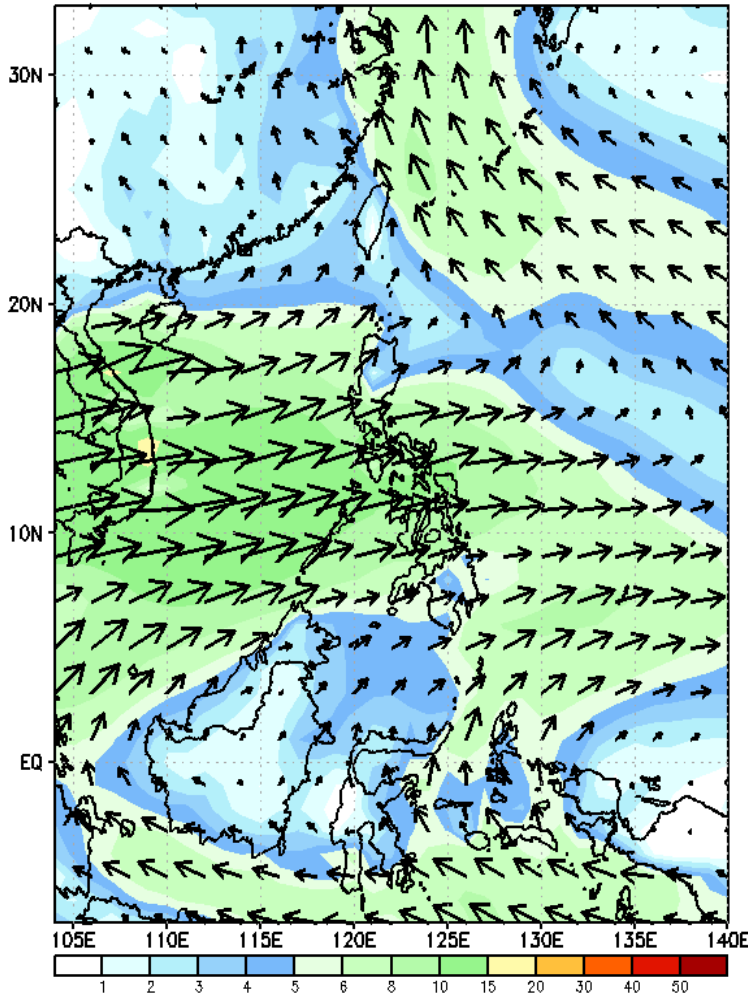


Low probability of rainfall to exceed 200mm in most parts of the country during the forecast period.

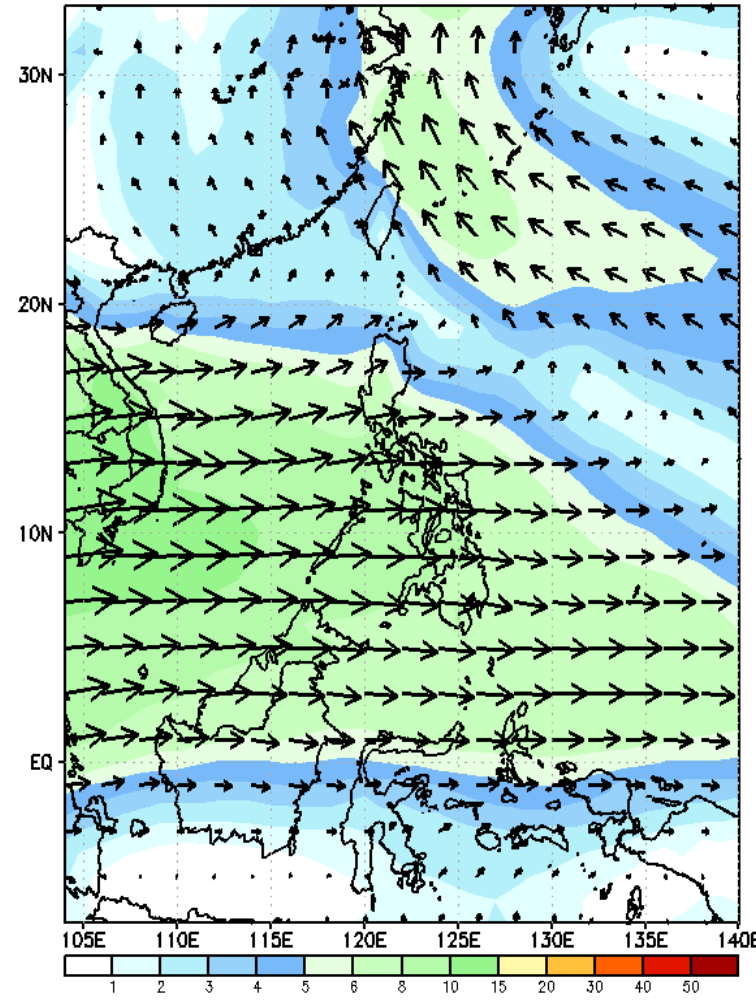
GEFS Week-2 Forecasts: Wind Forecast

Week 2: July 24-30, 2023

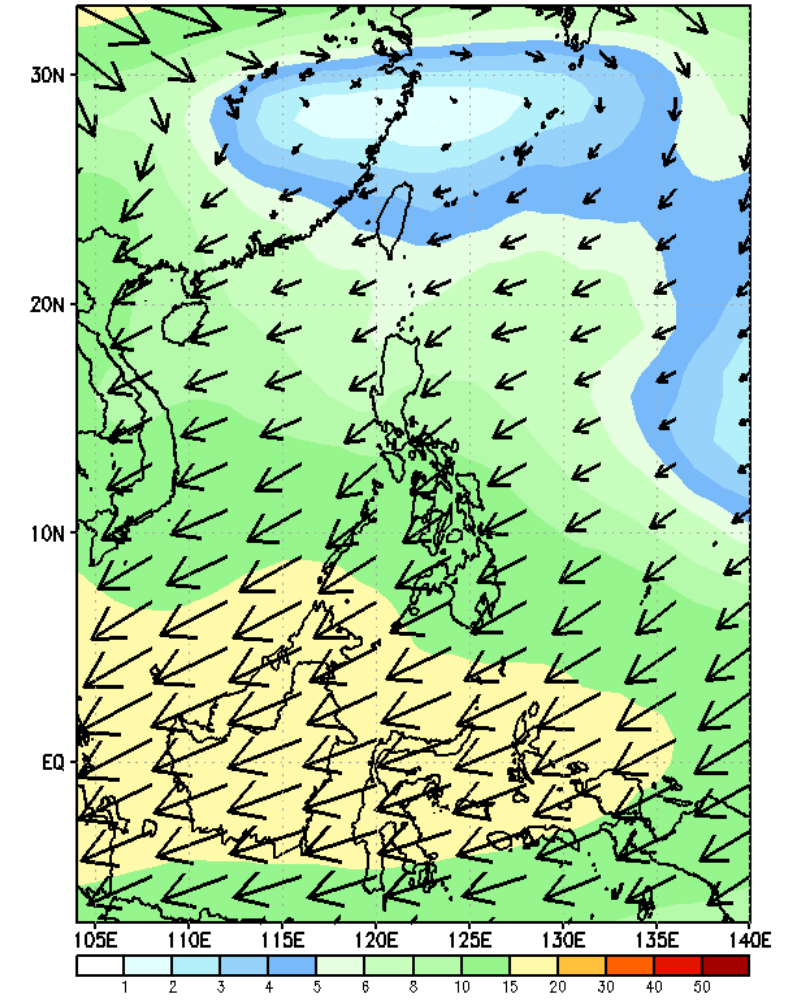
GEFS Week-2 850-hPa Wind Total
Valid: 20230724 - 20230730



GEFS Week-2 700-hPa Wind Total
Valid: 20230724 - 20230730

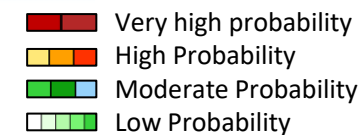


GEFS Week-2 200-hPa Wind Total
Valid: 20230724 - 20230730



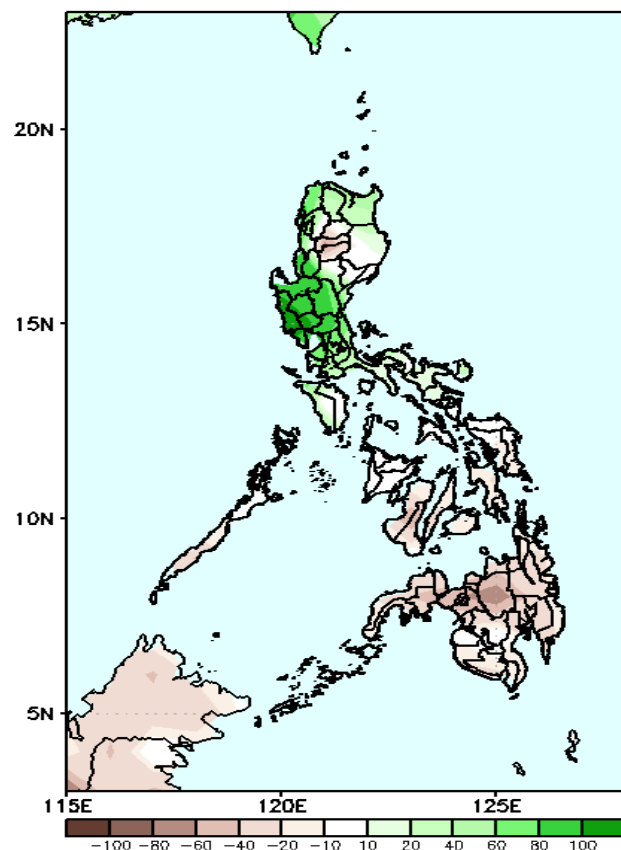
Southwest monsoon is forecasted to prevail in Luzon and Western Visayas while easterlies will likely affect the rest of Visayas and Mindanao.

Precipitation Anomaly and Exceedance Probability > 25/50 mm



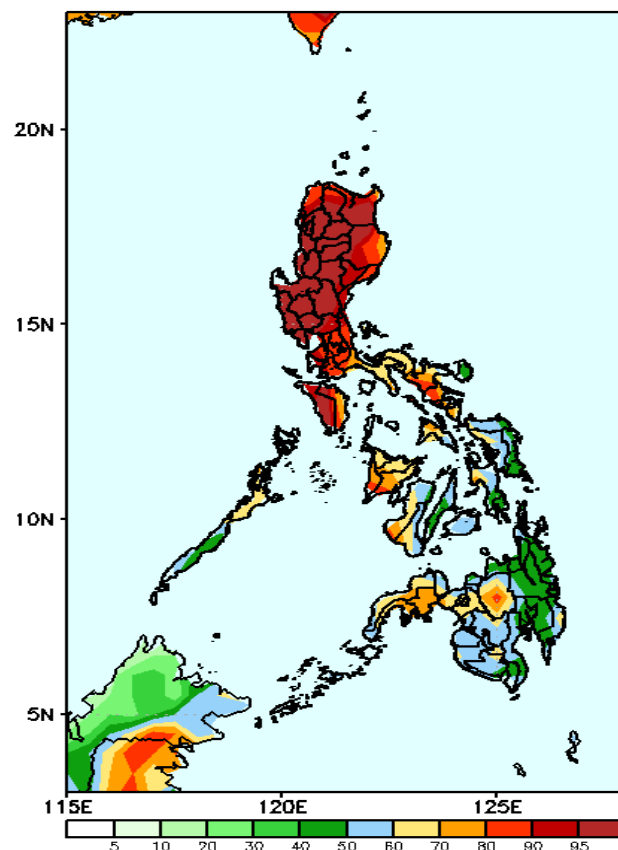
Week 2: July 24-30, 2023

GEFS Week-2 Precip Anomaly
Valid: 20230724 - 20230730



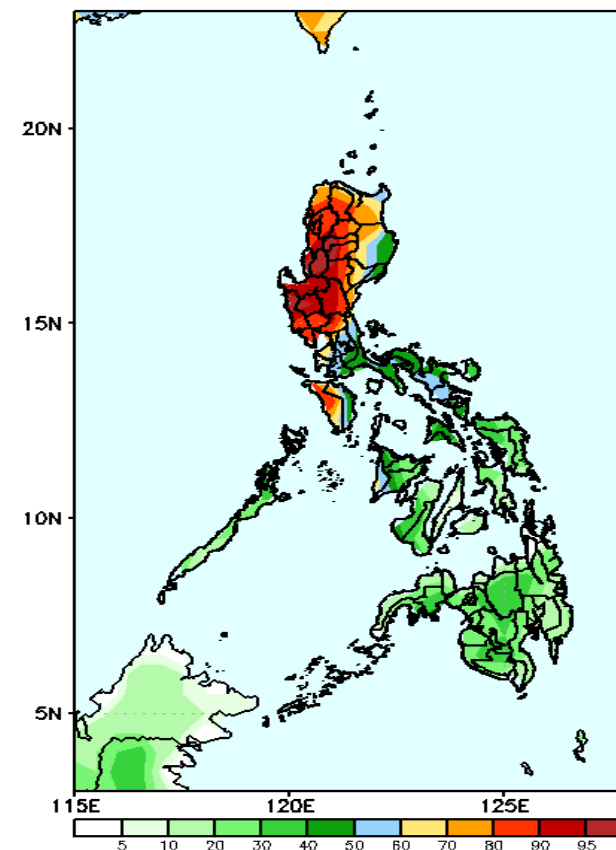
Increase of rainfall of more than 100mm is expected in most parts of Pangasinan and Central Luzon; 40-90mm in some areas in northern & southern Luzon while the rest of the country will likely have 20-90mm rainfall deficit.

GEFS Week-2 Exceedance Prob. > 25mm
Valid: 20230724 - 20230730



High to very high probability to exceed 25mm of rainfall in Luzon except for Southern Palawan and Catanduanes while moderate to high chance over the rest of the country.

GEFS Week-2 Exceedance Prob. > 50mm
Valid: 20230724 - 20230730



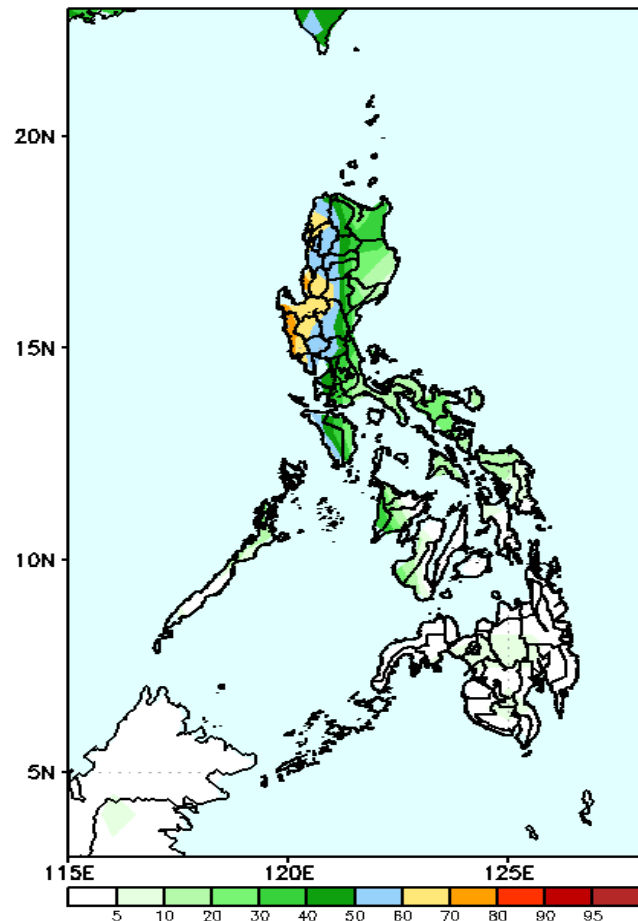
High to very high probability to exceed 50mm of rainfall in the western sections of Northern and Central Luzon, moderate to high likelihood over the rest of Luzon except Palawan, and low to moderate chance over Visayas and Mindanao.

Exceedance Probability > 100/150/200 mm

- Very high probability
- High Probability
- Moderate Probability
- Low Probability

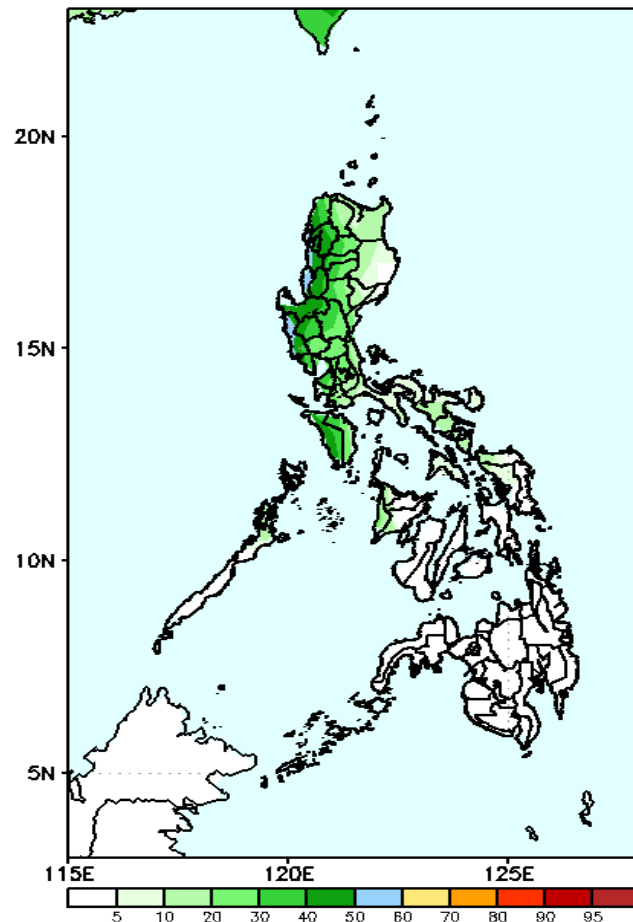
Week 2: July 24-30, 2023

GEFS Week-2 Exceedance Prob. > 100mm
Valid: 20230724 - 20230730



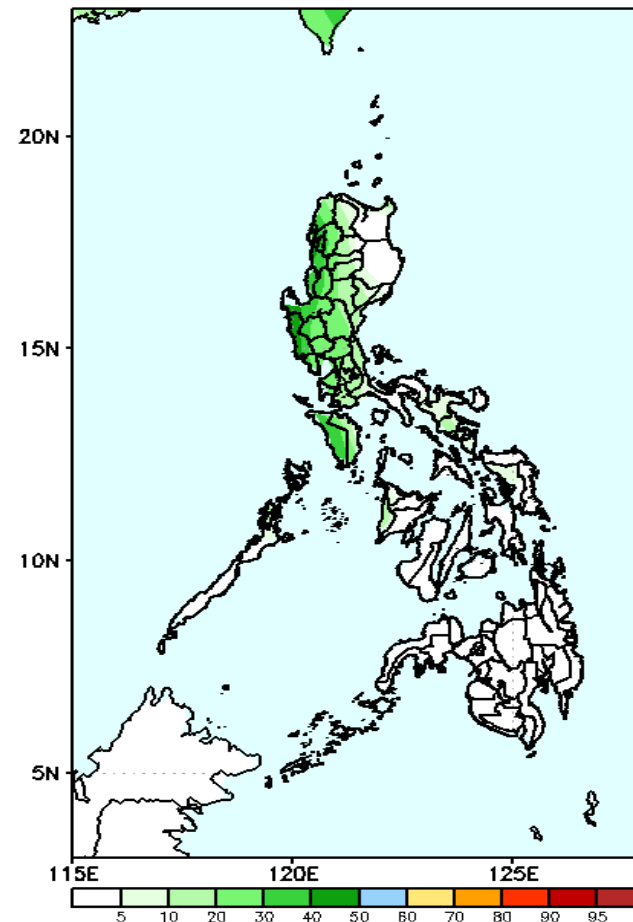
Moderate to high probability to exceed 100mm of rainfall over the western section of Luzon except for Palawan while low to moderate chance over the rest of the country.

GEFS Week-2 Exceedance Prob. > 150mm
Valid: 20230724 - 20230730



Moderate probability to exceed 150mm of rainfall over the western sections of northern and central Luzon while low chance over the rest of the country.

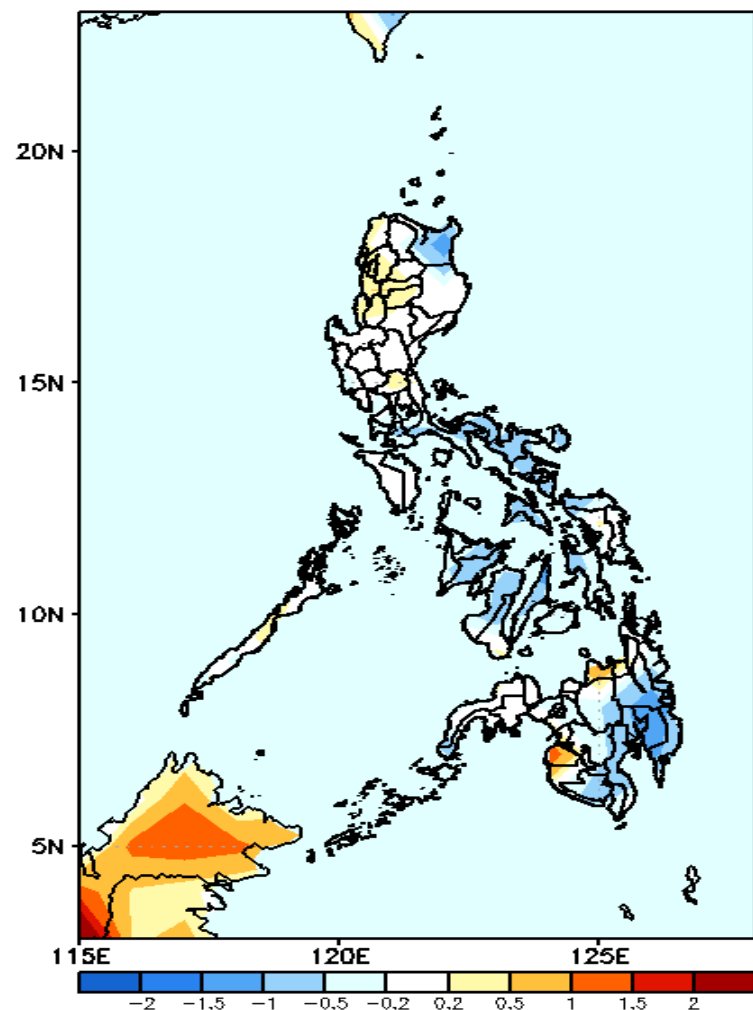
GEFS Week-2 Exceedance Prob. > 200mm
Valid: 20230724 - 20230730



Low probability of rainfall to exceed 200mm in most parts of the country during the forecast period.

GEFS Week-1 & 2 Forecasts: T2m Anomaly

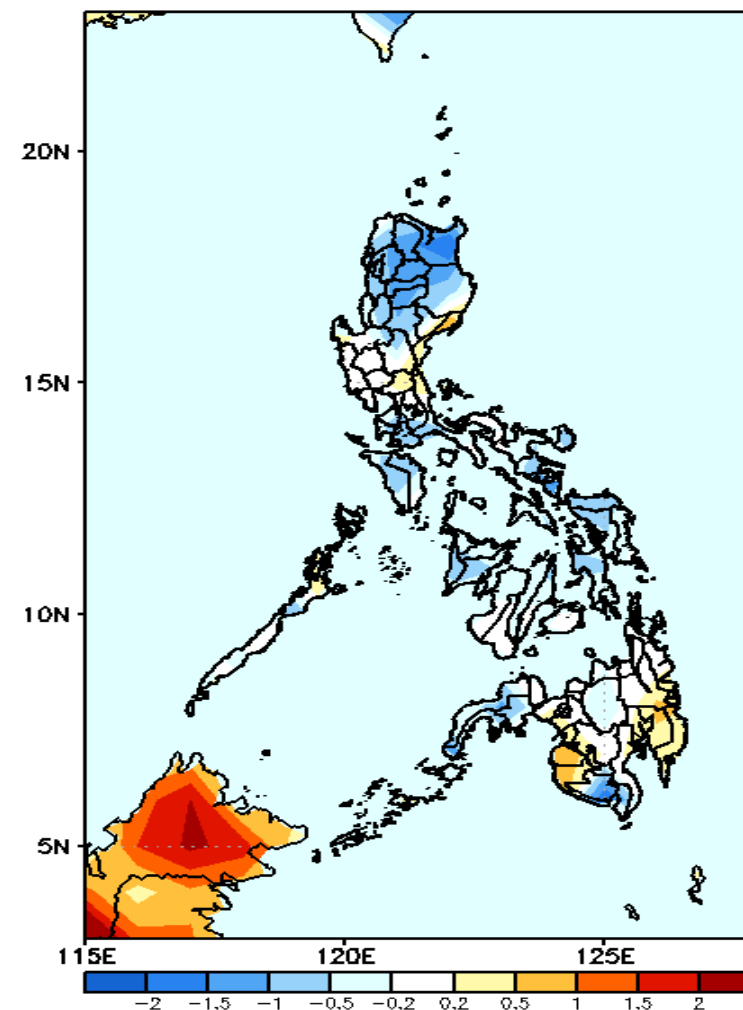
GEFS Week-1 T2m Anomaly
Valid: 20230717 - 20230723



2m Temperature Week 1: July 17-23, 2023

Average to cooler than average surface air temperature will likely experience in most parts of the country except in Misamis Oriental and Maguindanao -warmer.

GEFS Week-2 T2m Anomaly
Valid: 20230724 - 20230730



2m Temperature Week 2: July 24-30, 2023

Average to cooler than average surface air temperature will likely experience in most parts of the country except in Baler, Sultan Kudarat & Maguindanao and Davao Region where slightly warmer temperature is expected.