



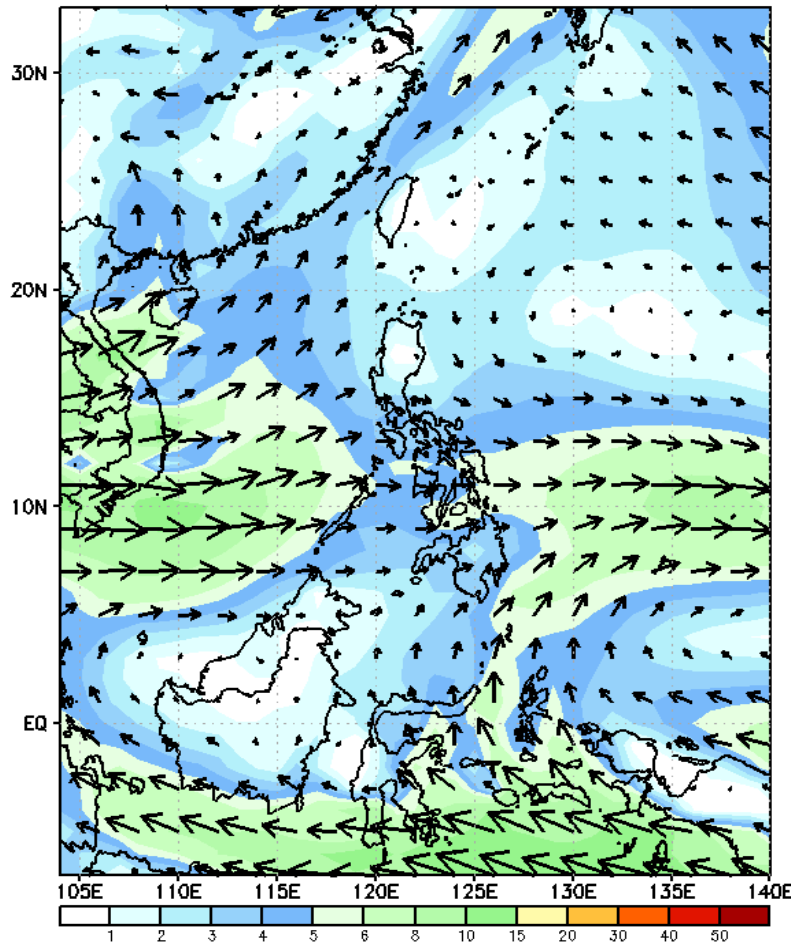
Week 1 & Week 2 Forecast for the Philippines using GEFS Model



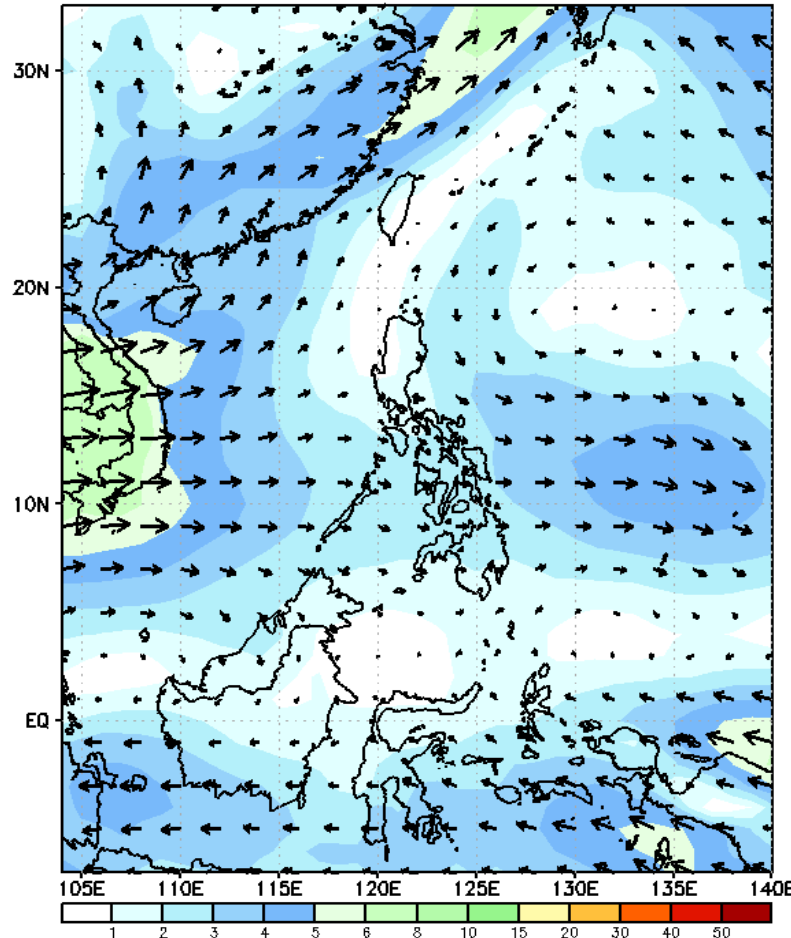
GEFS Week-1 Forecasts: Wind Forecast

Week 1: Aug 22-28, 2023

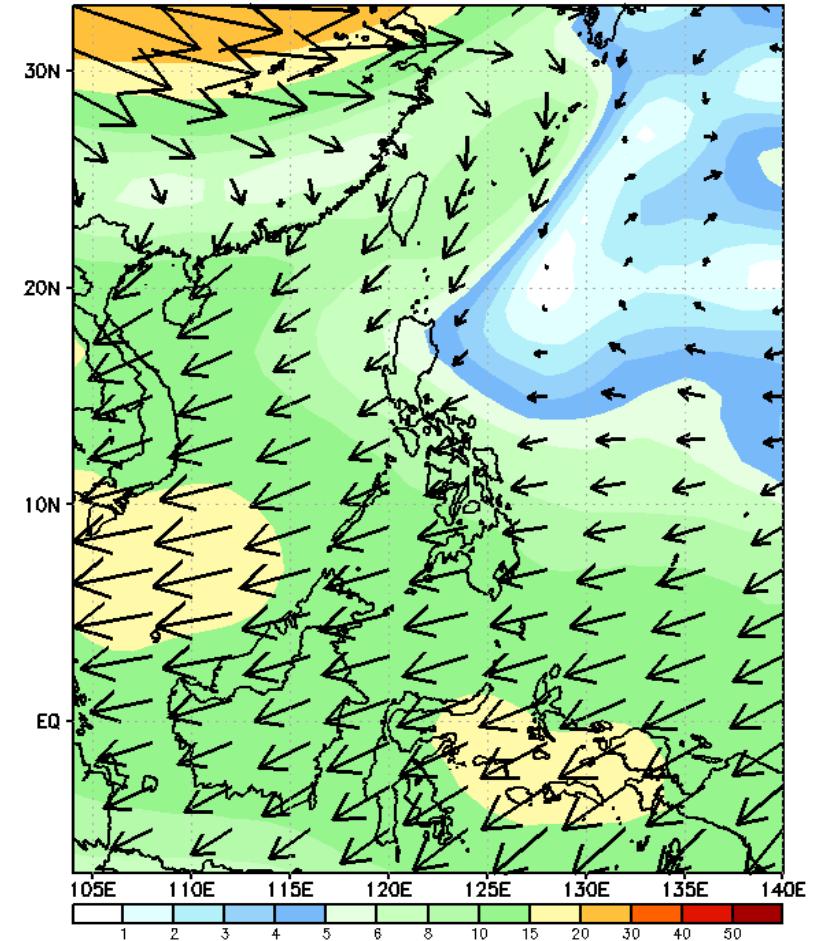
GEFS Week-1 850-hPa Wind Total
Valid: 20230822 - 20230828



GEFS Week-1 700-hPa Wind Total
Valid: 20230822 - 20230828



GEFS Week-1 200-hPa Wind Total
Valid: 20230822 - 20230828



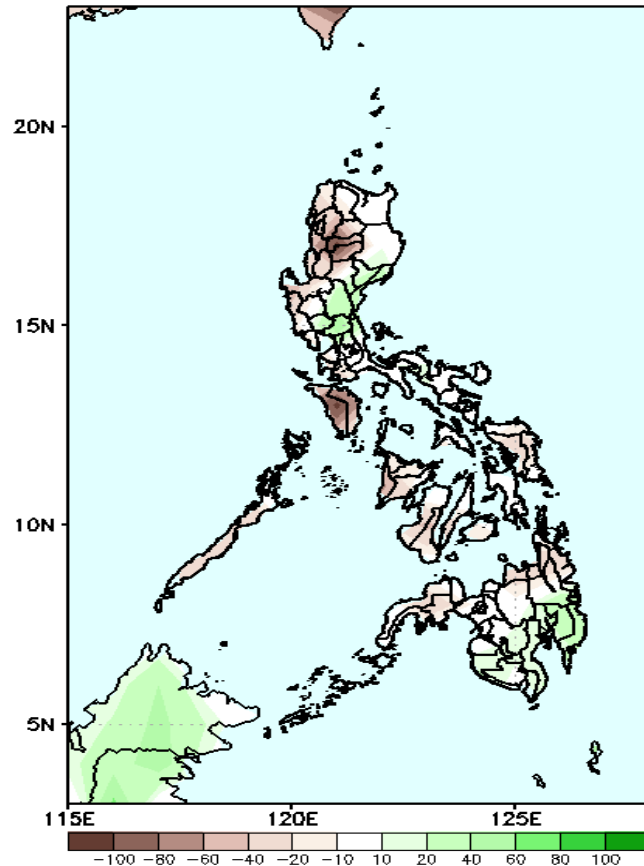
Southwest Monsoon is forecasted to prevail over the western sections of Luzon and Visayas.

Precipitation Anomaly and Exceedance Probability > 25/50 mm



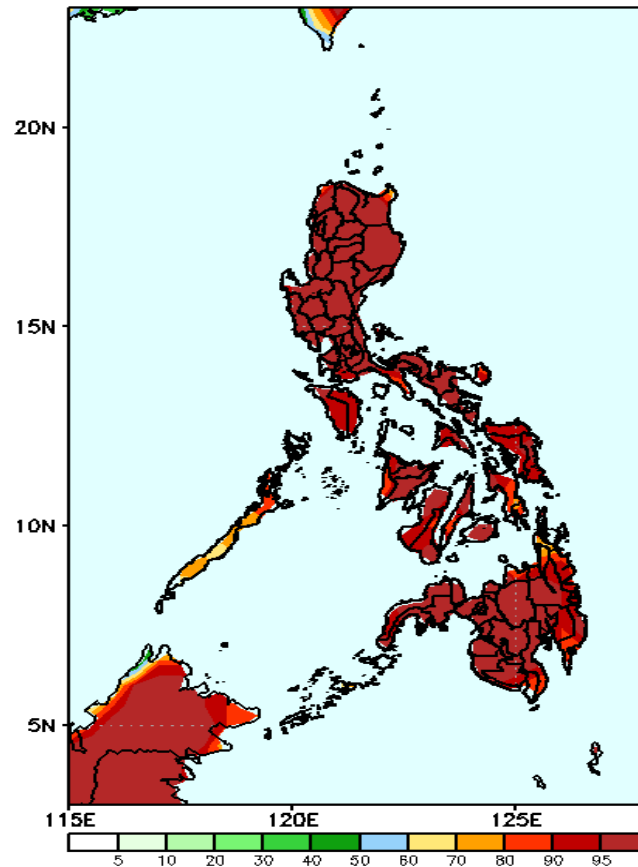
Week 1: Aug 22-28, 2023

GEFS Week-1 Precip. Anomaly
Valid: 20230822 - 20230828



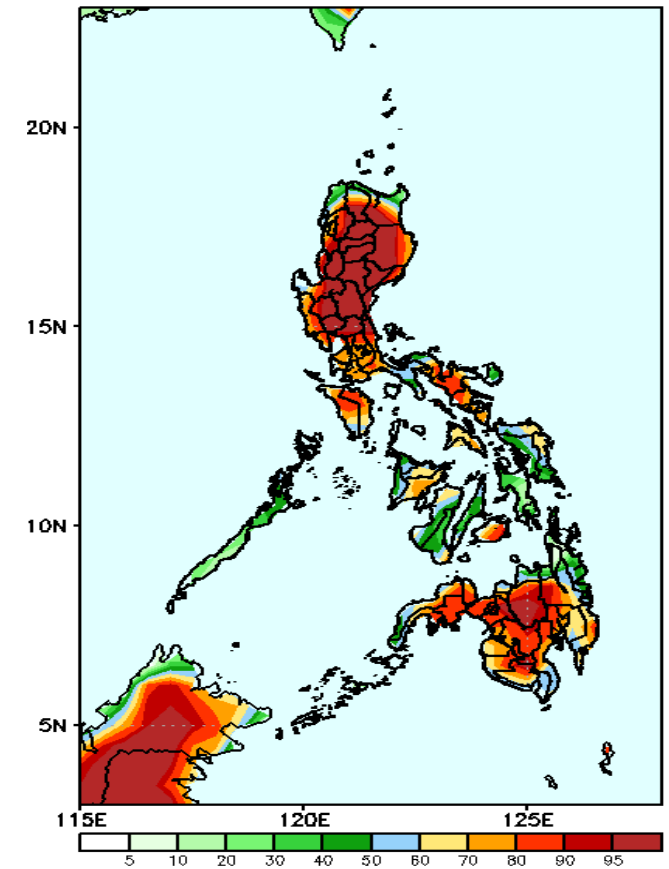
Rainfall deficit of 40-100mm in Mindoro, Mt. Province and Ifugao; 10-30mm for the rest of the country except in eastern part of Central Luzon and southern Mindanao where 10-60mm increase of rainfall is expected.

GEFS Week-1 Exceedance Prob. > 25mm
Valid: 20230822 - 20230828



High to a very high probability to exceed 25mm over most parts of the country.

GEFS Week-1 Exceedance Prob. > 50mm
Valid: 20230822 - 20230828



High to a very high probability to exceed 50mm of rainfall over most parts of Luzon and Mindanao while moderate to high probability in Palawan, Catanduanes and most parts of Visayas.

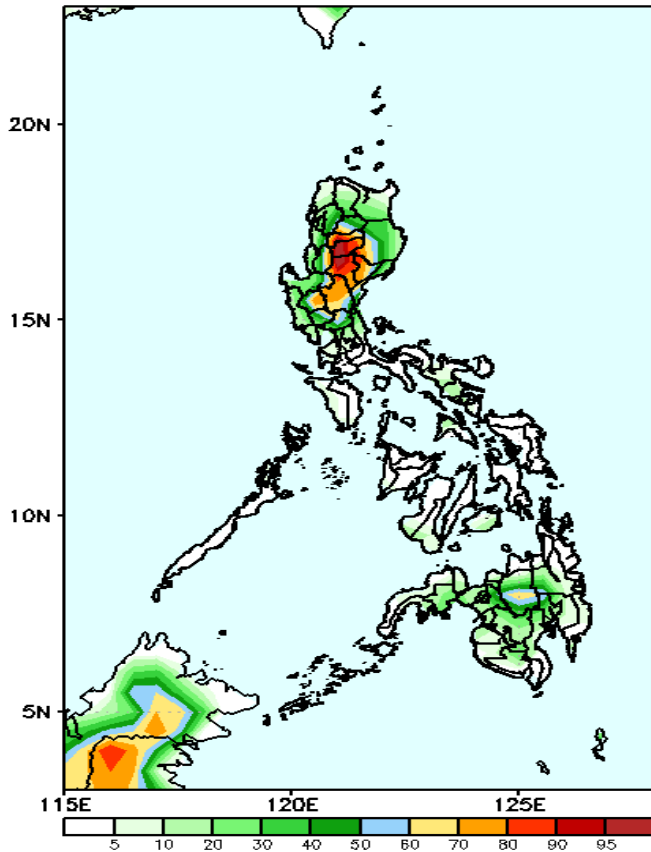


Exceedance Probability > 100/150/200 mm

Week 1: Aug 22-28, 2023

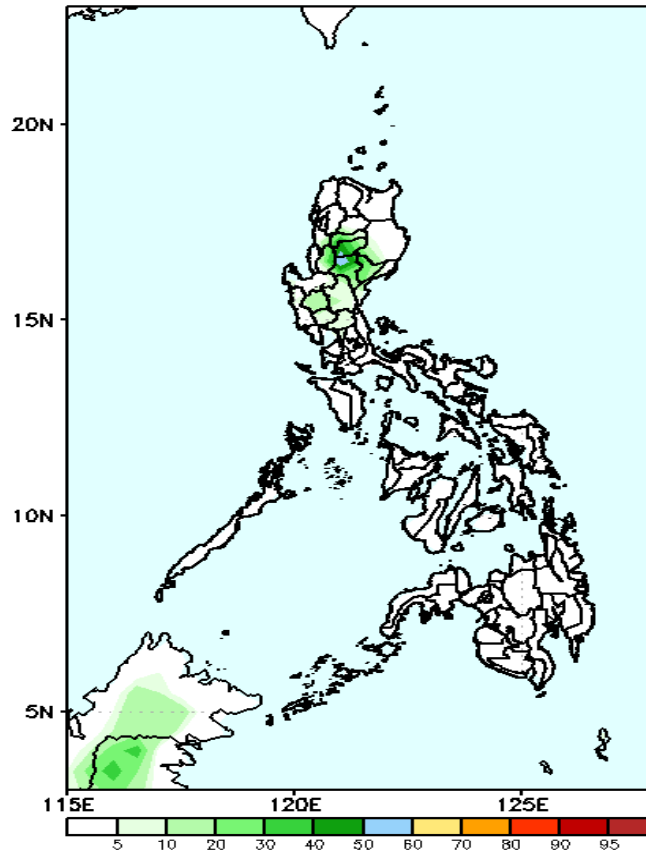
- Very high probability
- High Probability
- Moderate Probability
- Low Probability

GEFS Week-1 Exceedance Prob. > 100mm
Valid: 20230822 - 20230828



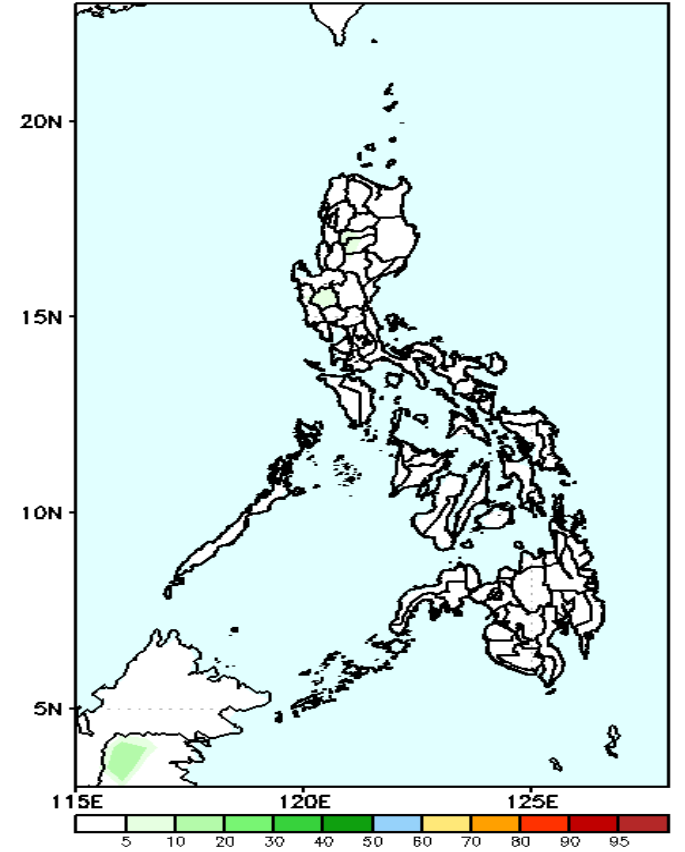
Moderate to high probability to exceed 100mm of rainfall in the southern portion of Northern Luzon, Central Luzon and Bukidnon while low likelihood over the rest of the country.

GEFS Week-1 Exceedance Prob. > 150mm
Valid: 20230822 - 20230828



Low probability to exceed 150mm of rainfall over the rest of the country.

GEFS Week-1 Exceedance Prob. > 200mm
Valid: 20230822 - 20230828

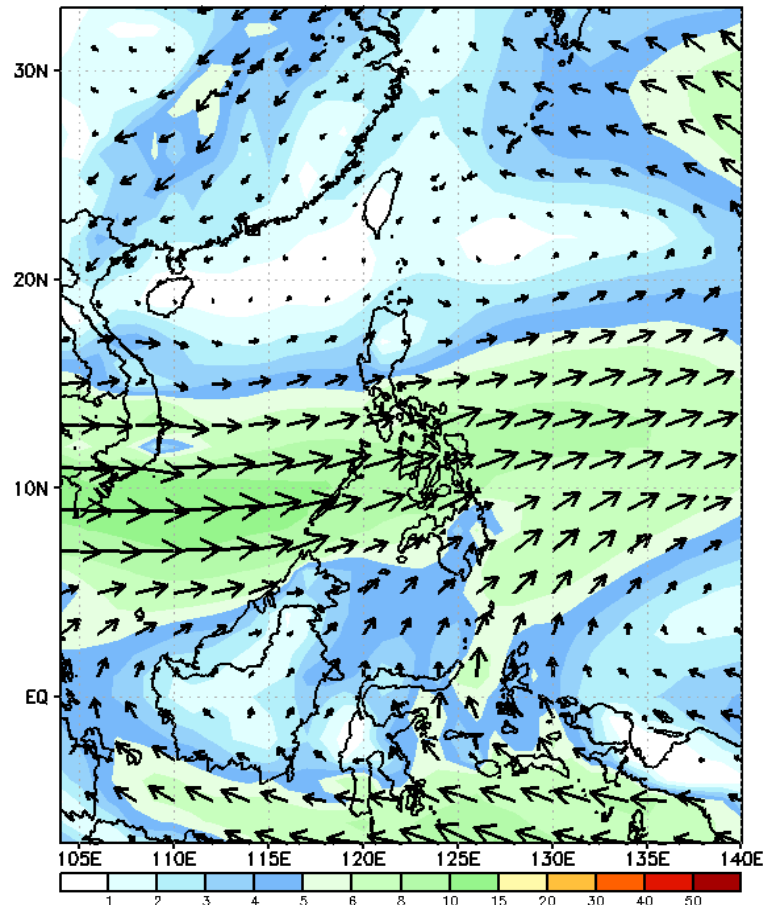


Low probability to exceed 200mm of rainfall over the rest of the country.

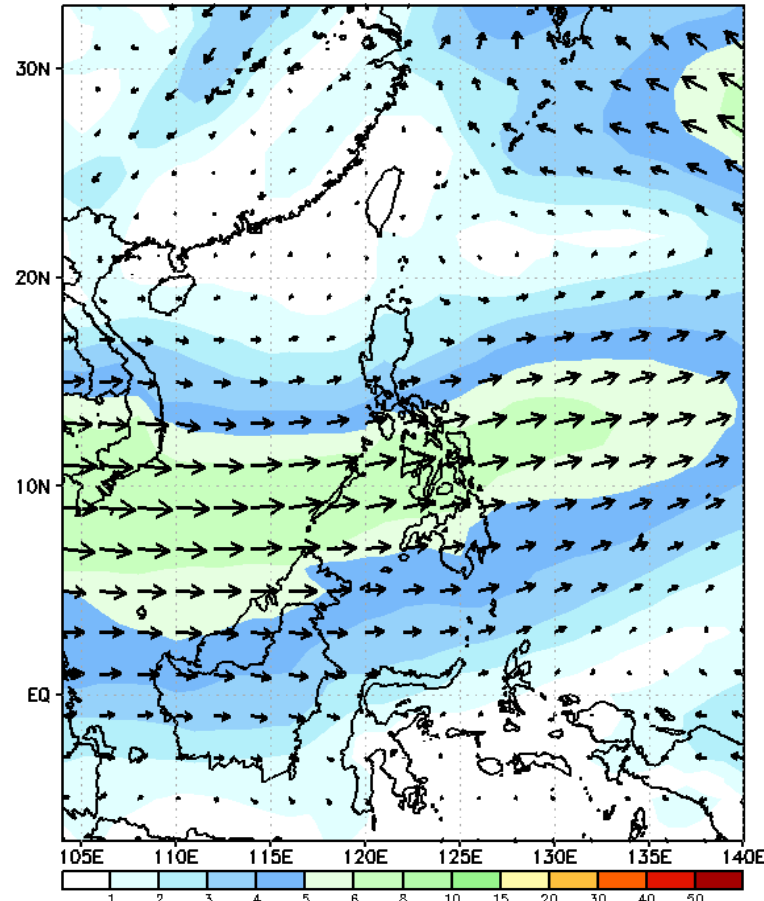
GEFS Week-2 Forecasts: Wind Forecast

Week 2: Aug 29- Sep 04, 2023

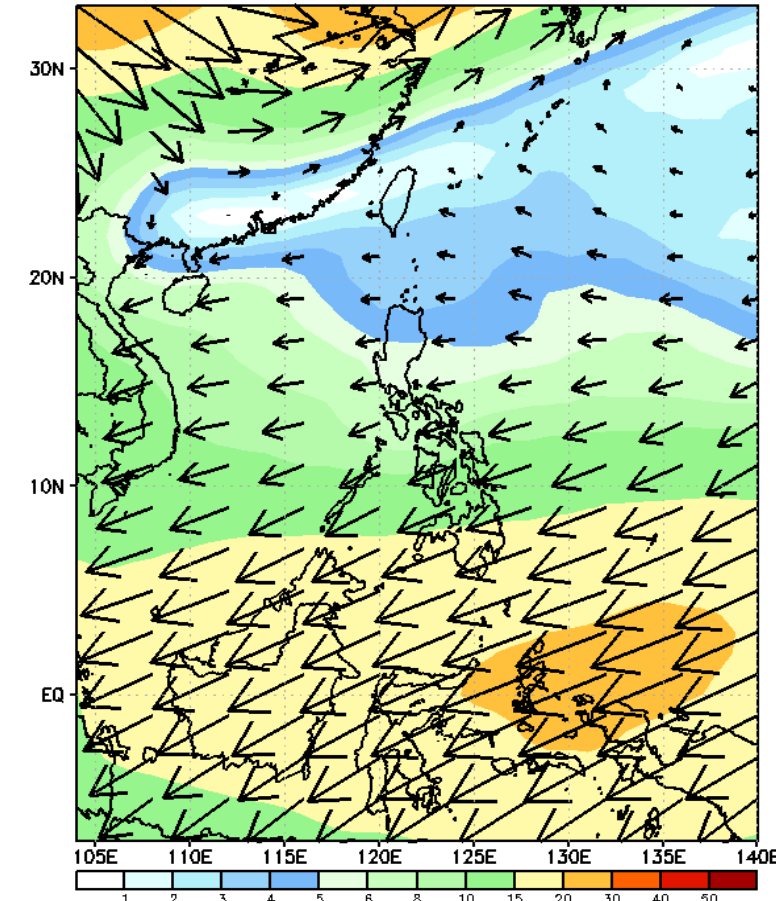
GEFS Week-2 850-hPa Wind Total
Valid: 20230829 - 20230904



GEFS Week-2 700-hPa Wind Total
Valid: 20230829 - 20230904



GEFS Week-2 200-hPa Wind Total
Valid: 20230829 - 20230904



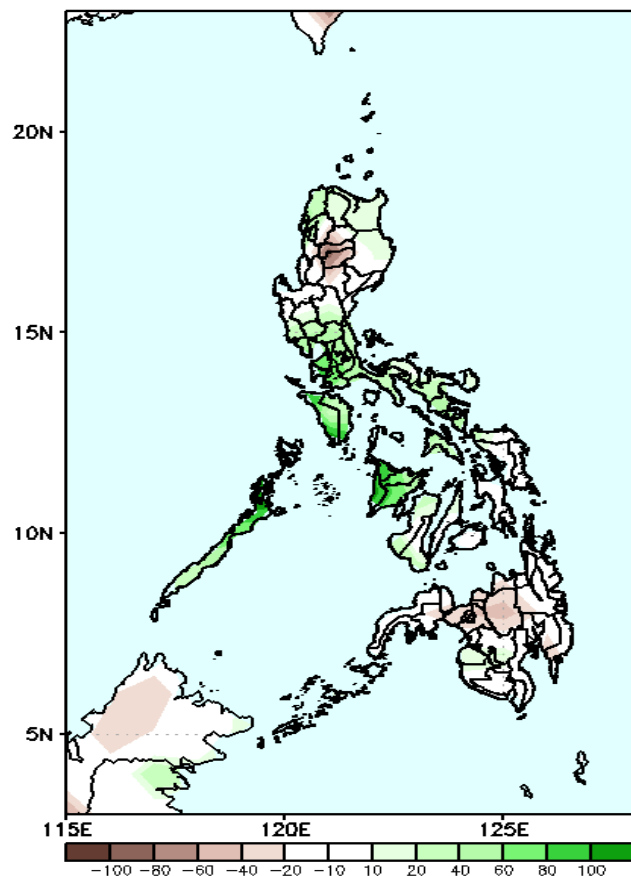
Enhanced Southwest Monsoon is forecasted to prevail over the western sections of Visayas and Mindanao.

Precipitation Anomaly and Exceedance Probability > 25/50 mm



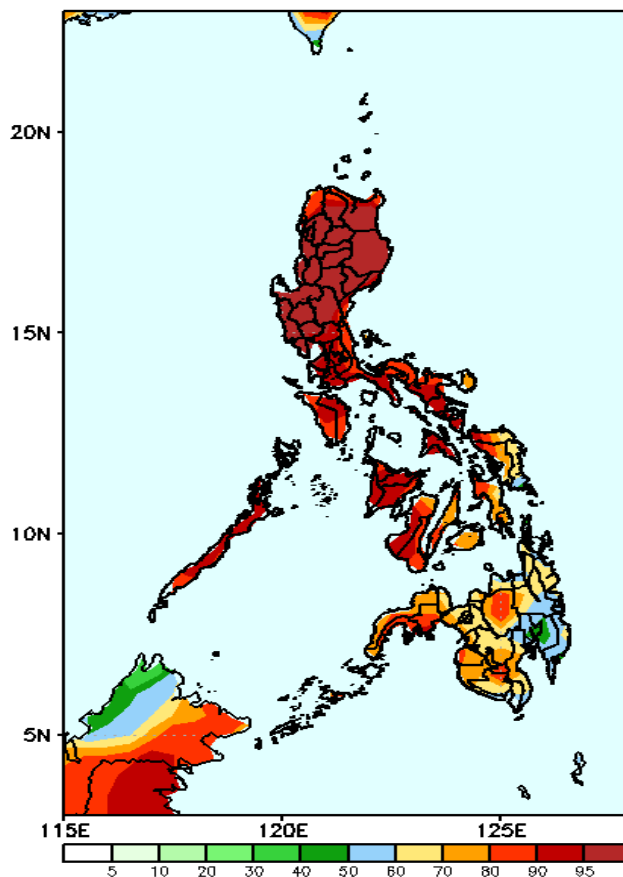
Week 2: Aug 29- Sep 04, 2023

GEFS Week-2 Precip Anomaly
Valid: 20230829 - 20230904



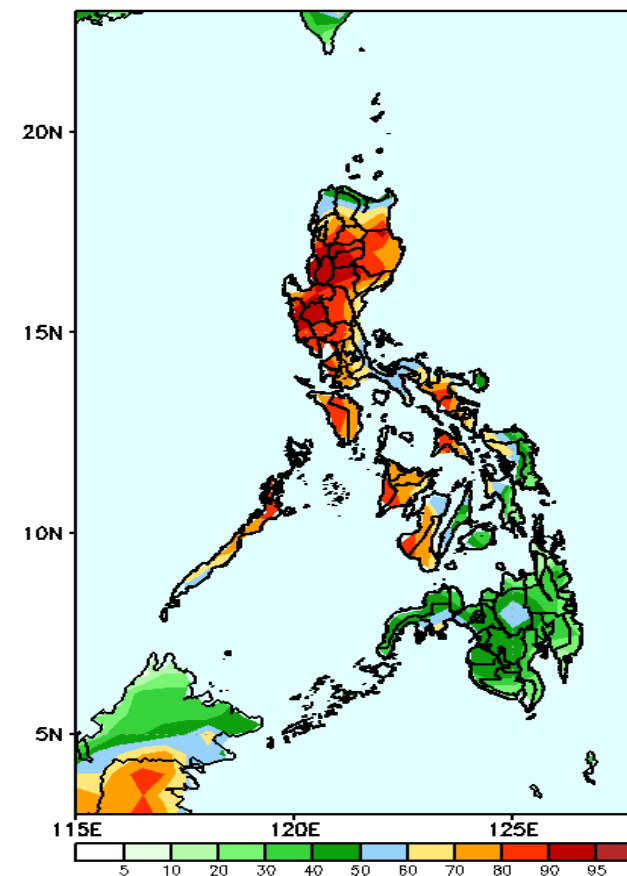
Increase of rainfall of 20-100mm in most parts of Luzon and Visayas while 20-60mm rainfall deficit will be likely in Mt. Province, Apayao and most parts of Mindanao.

GEFS Week-2 Exceedance Prob. > 25mm
Valid: 20230829 - 20230904



High to a very high probability to exceed 25mm in most parts of Luzon and Visayas while moderate to high likelihood over Mindanao.

GEFS Week-2 Exceedance Prob. > 50mm
Valid: 20230829 - 20230904



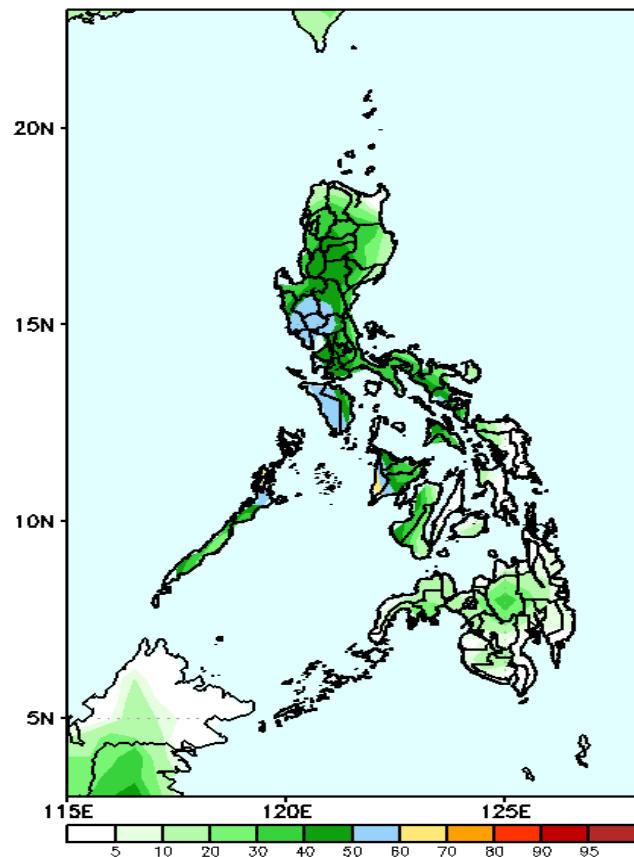
High to a very high probability to exceed 50mm in most parts of Luzon and Western Visayas while low to moderate chance over the rest of the country.

Exceedance Probability > 100/150/200 mm

Week 2: Aug 29- Sep 04, 2023

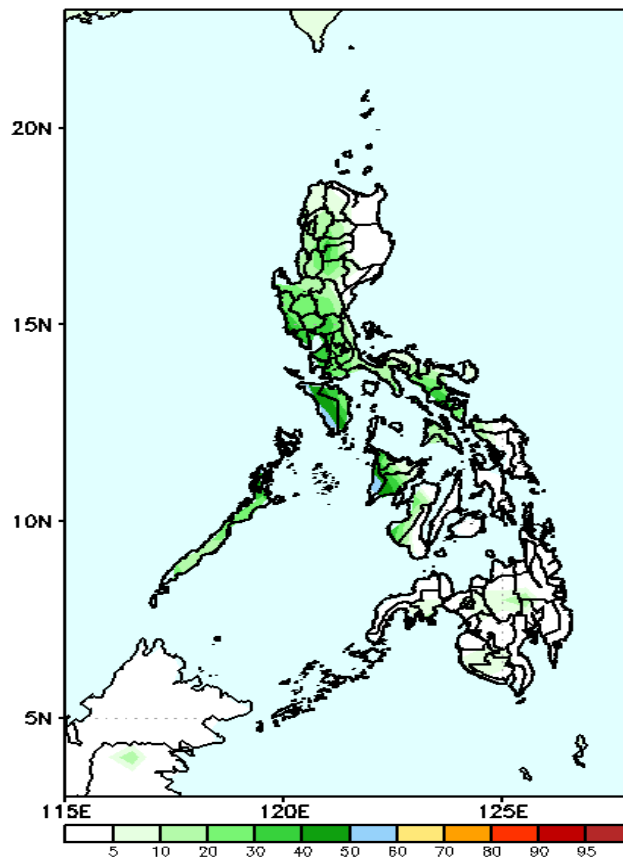
- Very high probability
- High Probability
- Moderate Probability
- Low Probability

GEFS Week-2 Exceedance Prob. > 100mm
Valid: 20230829 - 20230904



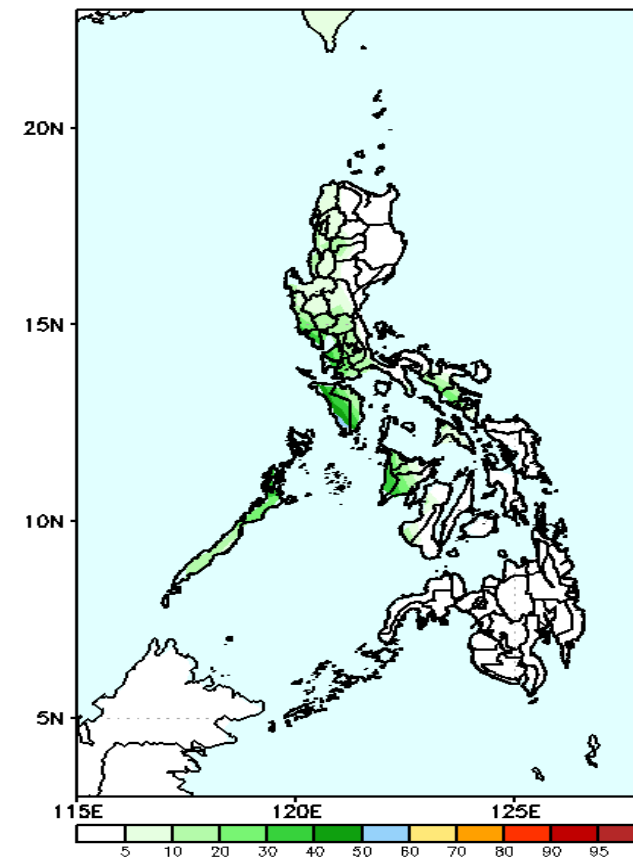
Moderate to high probability to exceed 100mm of rainfall over Central Luzon and Occidental Mindoro while low to moderate chance over the rest of the country.

GEFS Week-2 Exceedance Prob. > 150mm
Valid: 20230829 - 20230904



Low to moderate probability to exceed 150mm of rainfall over Central and Southern Luzon and Antique while low chance over the rest of the country.

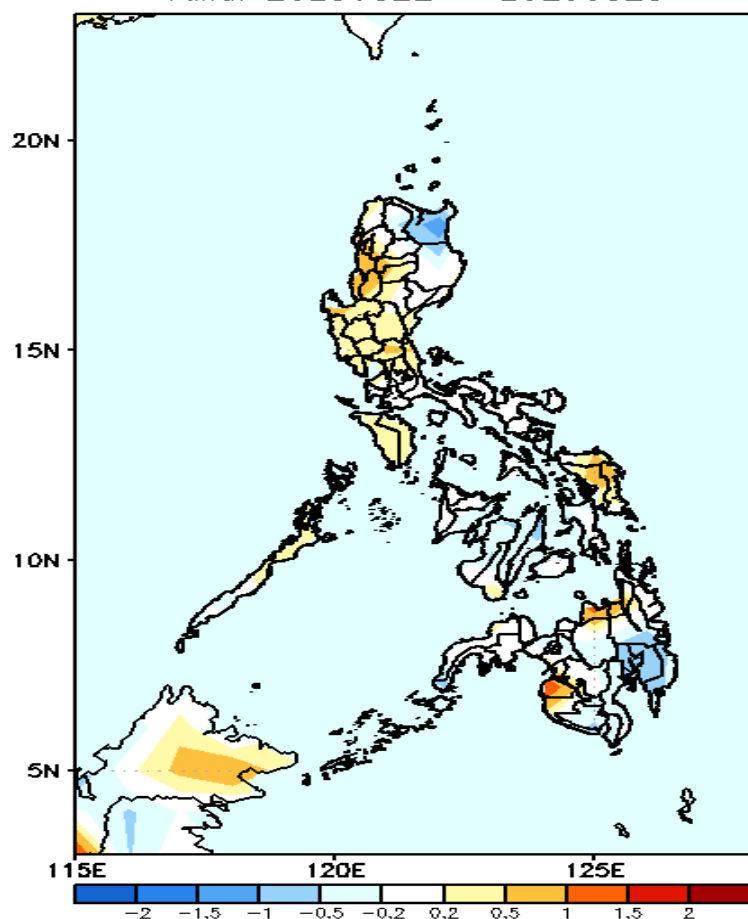
GEFS Week-2 Exceedance Prob. > 200mm
Valid: 20230829 - 20230904



Low probability to exceed 200mm of rainfall over the rest of the country.

GEFS Week-1 & 2 Forecasts: T2m Anomaly

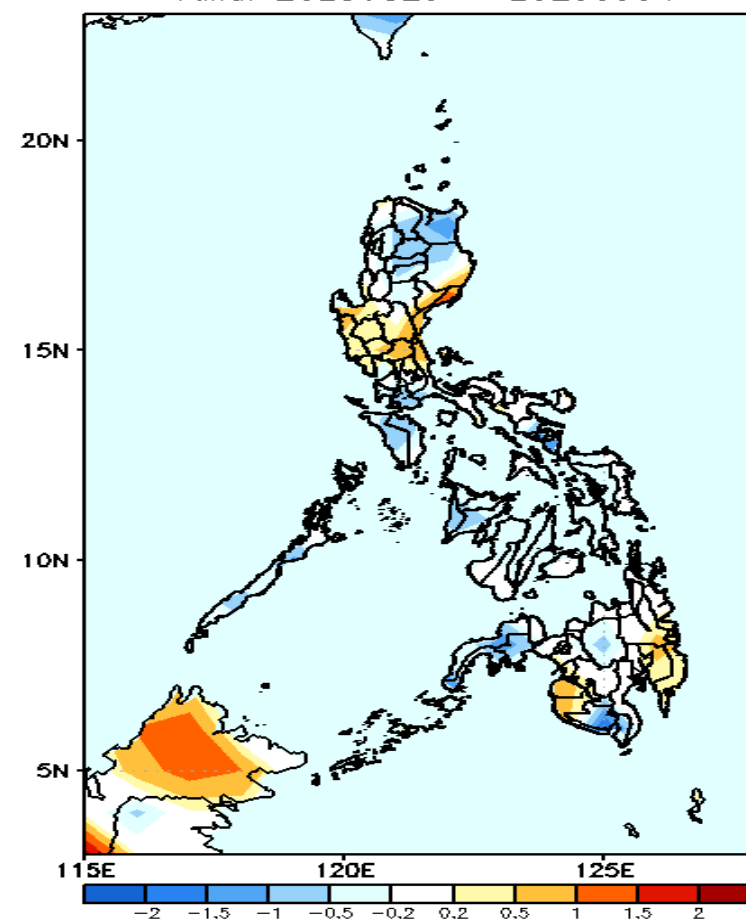
GEFS Week-1 T2m Anomaly
Valid: 20230822 – 20230828



2m Temperature Week 1: Aug 22-28, 2023

Average to slightly warmer to warmer than average surface air temperature will likely experience in most parts of the country except in Cagayan and Davao Region were slightly cooler to cooler than average surface air temperature is expected.

GEFS Week-2 T2m Anomaly
Valid: 20230829 – 20230904



2m Temperature Week 2: Aug 29- Sep 04, 2023

Average to cooler than average surface air temperature will likely experience in most parts of the country except in Pangasinan, Central Luzon, Sultan Kudarat, Maguindanao and Davao Region where slightly warmer to warmer temperature is expected.