



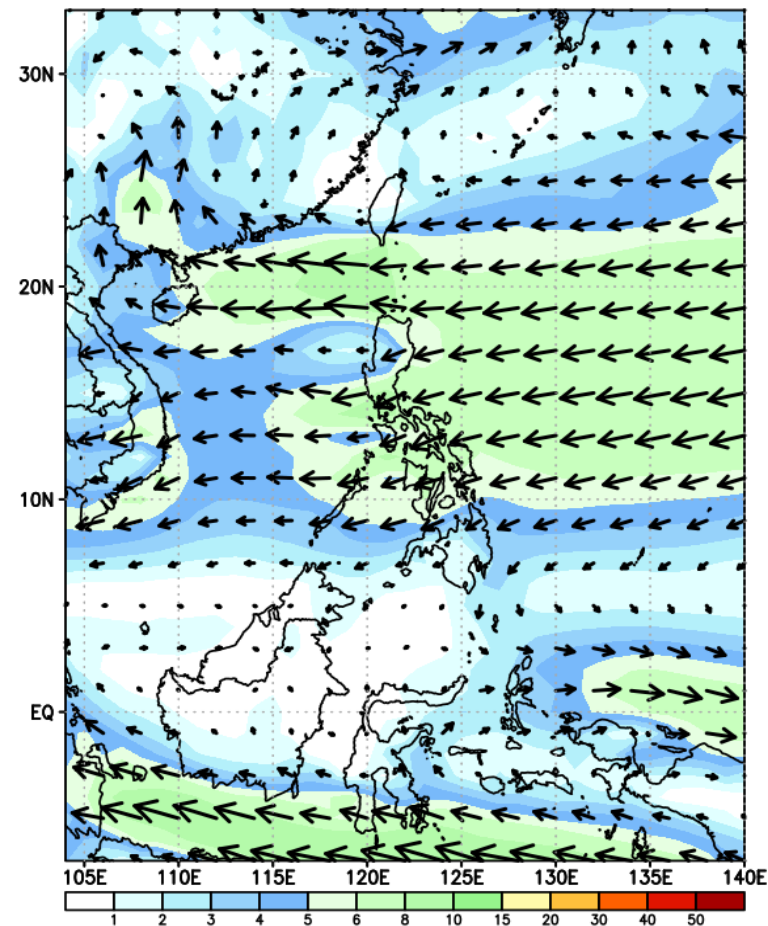
Week 1 & Week 2 Forecast for the Philippines using GEFS Model



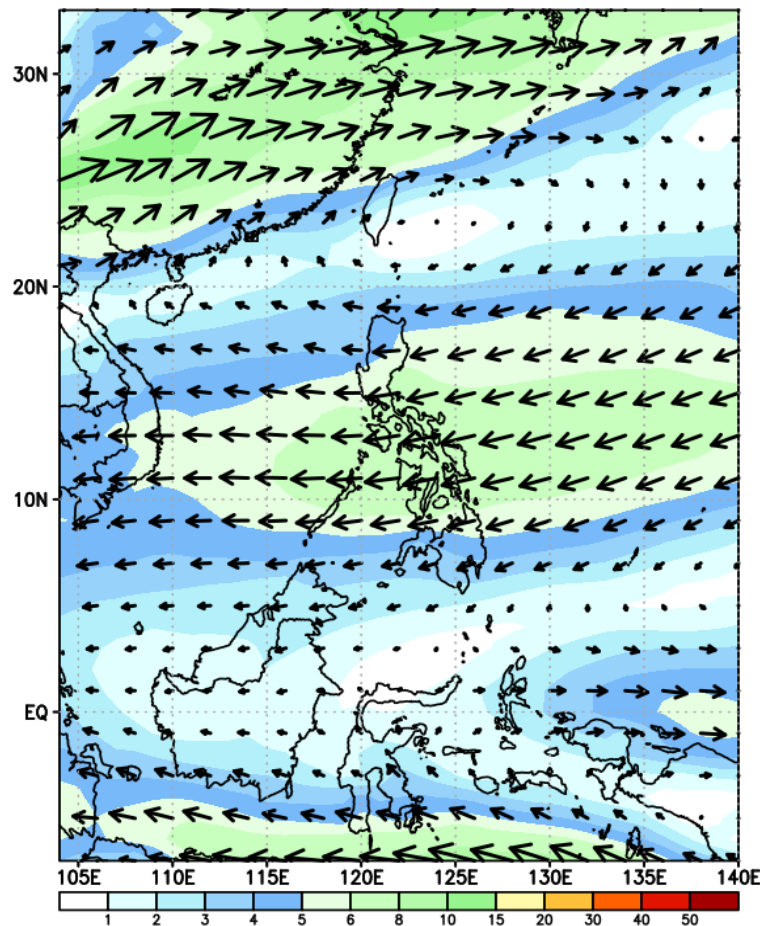
GEFS Week-1 Forecasts: Wind Forecast

Week 1: Nov 03-09, 2023

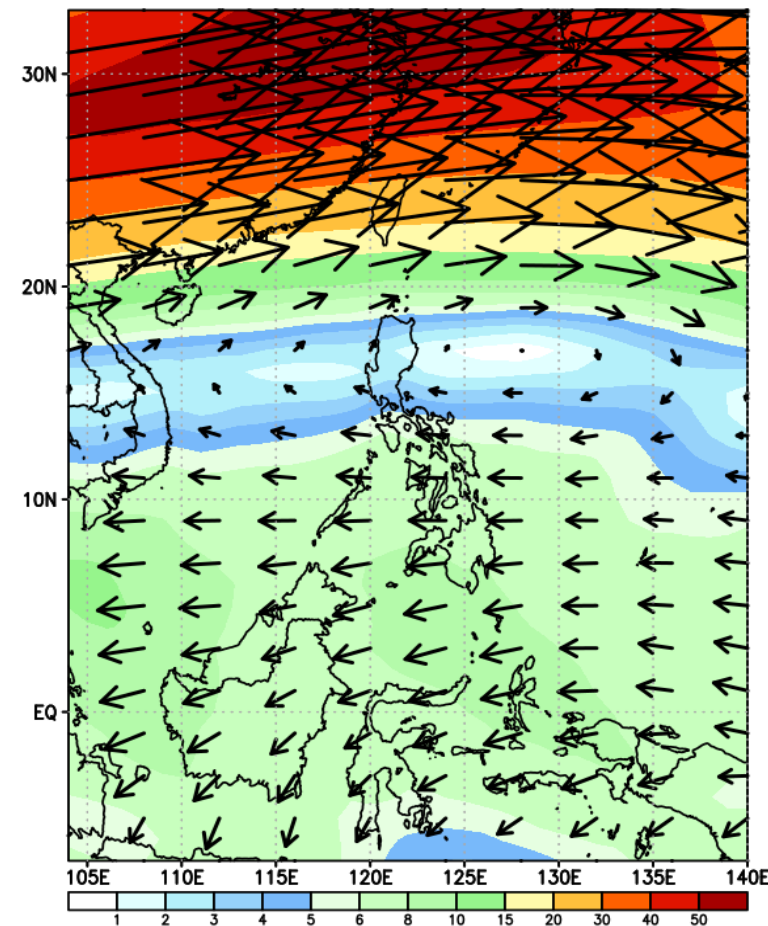
GEFS Week-1 850-hPa Wind Total
Valid: 20231103 - 20231109



GEFS Week-1 700-hPa Wind Total
Valid: 20231103 - 20231109



GEFS Week-1 200-hPa Wind Total
Valid: 20231103 - 20231109



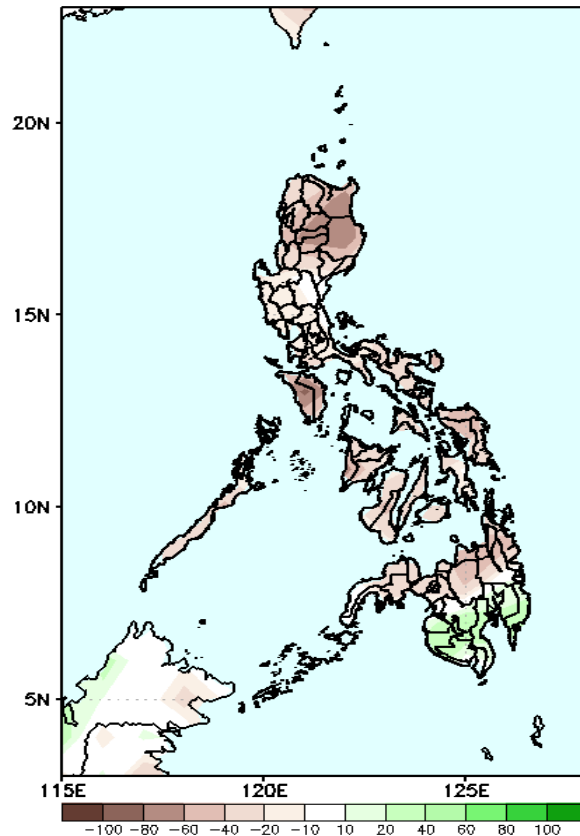
Northeast Monsoon affecting Northern and Central Luzon. Easterlies affecting the rest of the country.

Precipitation Anomaly and Exceedance Probability > 25/50 mm

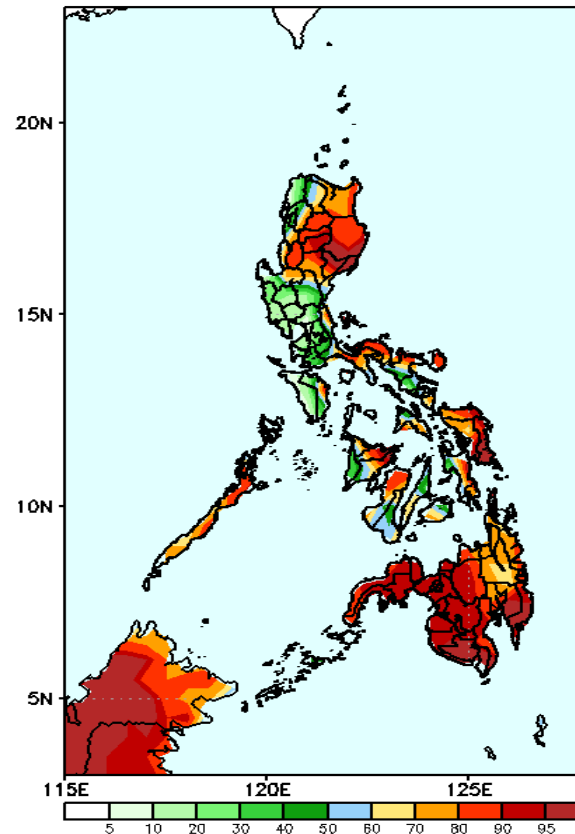


Week 1: Nov 03-09, 2023

GEFS Week-1 Precip Anomaly
Valid: 20231103 - 20231109



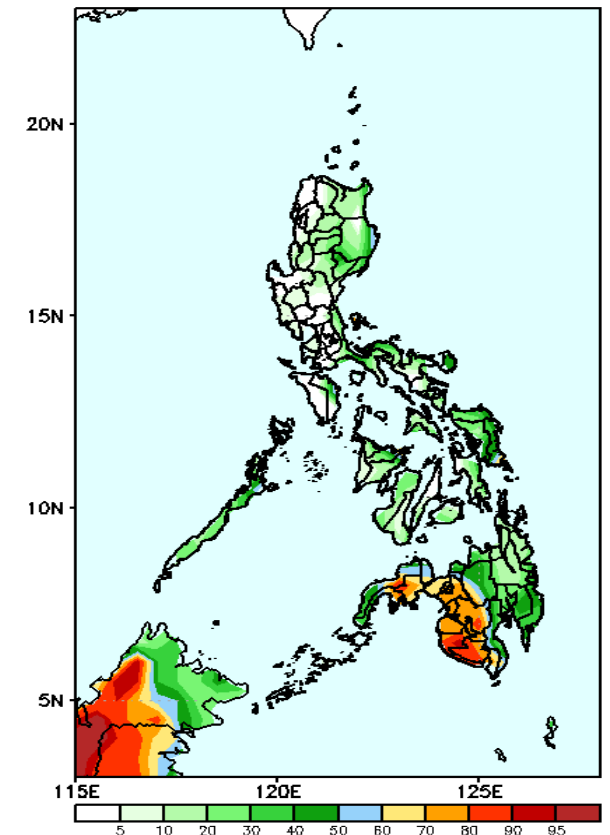
GEFS Week-1 Exceedance Prob. > 25mm
Valid: 20231103 - 20231109



Probability to Exceed 25mm

- High to very high over Cagayan Valley, CAR, Bicol Region, Palawan, eastern Visayas, Capiz and most parts of Mindanao;
- Moderate to high over the rest of Visayas
- Low to moderate over the rest of Luzon

GEFS Week-1 Exceedance Prob. > 50mm
Valid: 20231103 - 20231109

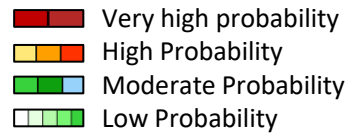


Probability to Exceed 50mm

- Moderate to high over most parts of western Mindanao and Eastern Samar;
- Low to moderate over the rest of the country.

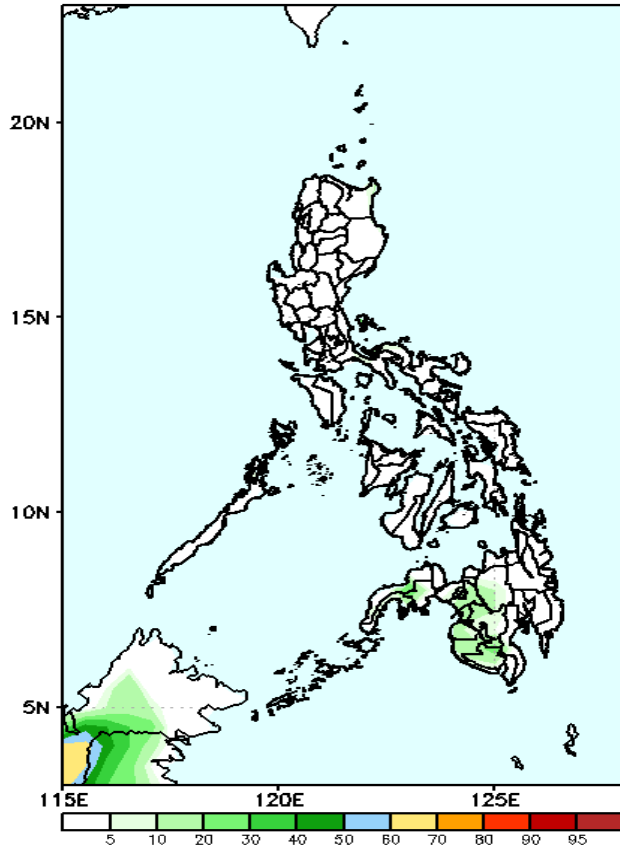
Rainfall deficit of 20-80mm is expected in most parts of the country except in southern Mindanao where 20-50mm increase of rainfall is more likely.

Exceedance Probability > 100/150/200 mm



Week 1: Nov 03-09, 2023

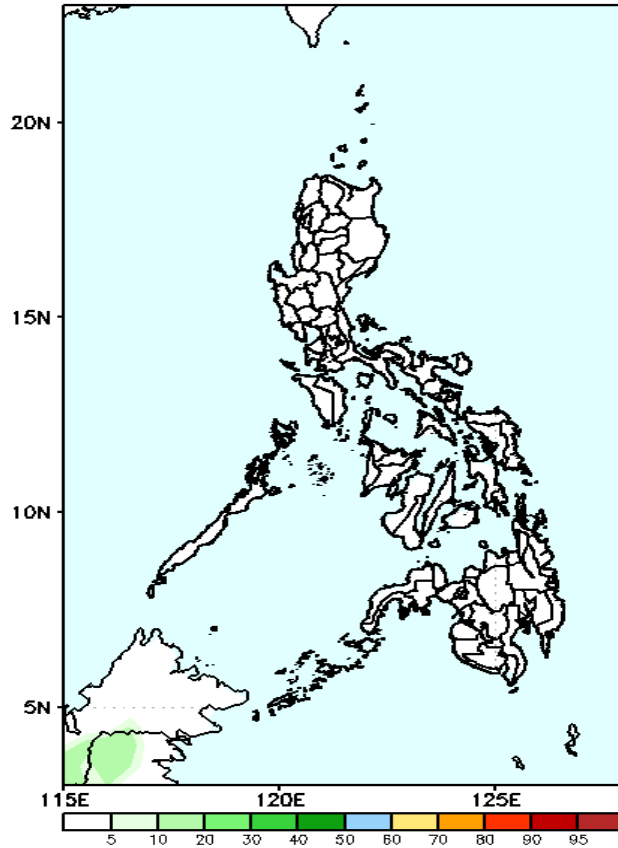
GEFS Week-1 Exceedance Prob. > 100mm
Valid: 20231103 - 20231109



Probability to Exceed 100mm

- Low in most parts of the country.

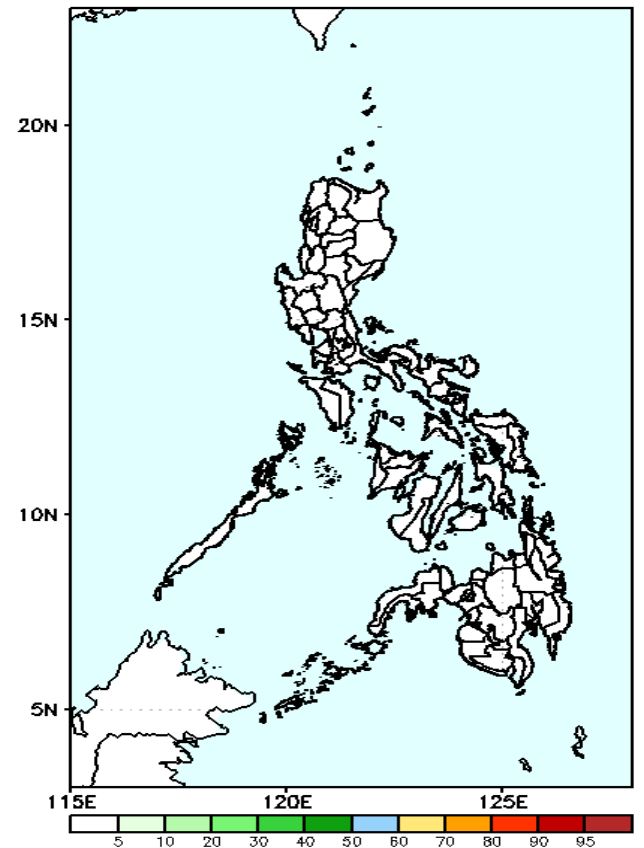
GEFS Week-1 Exceedance Prob. > 150mm
Valid: 20231103 - 20231109



Probability to Exceed 150mm

- Low in most parts of the country.

GEFS Week-1 Exceedance Prob. > 200mm
Valid: 20231103 - 20231109



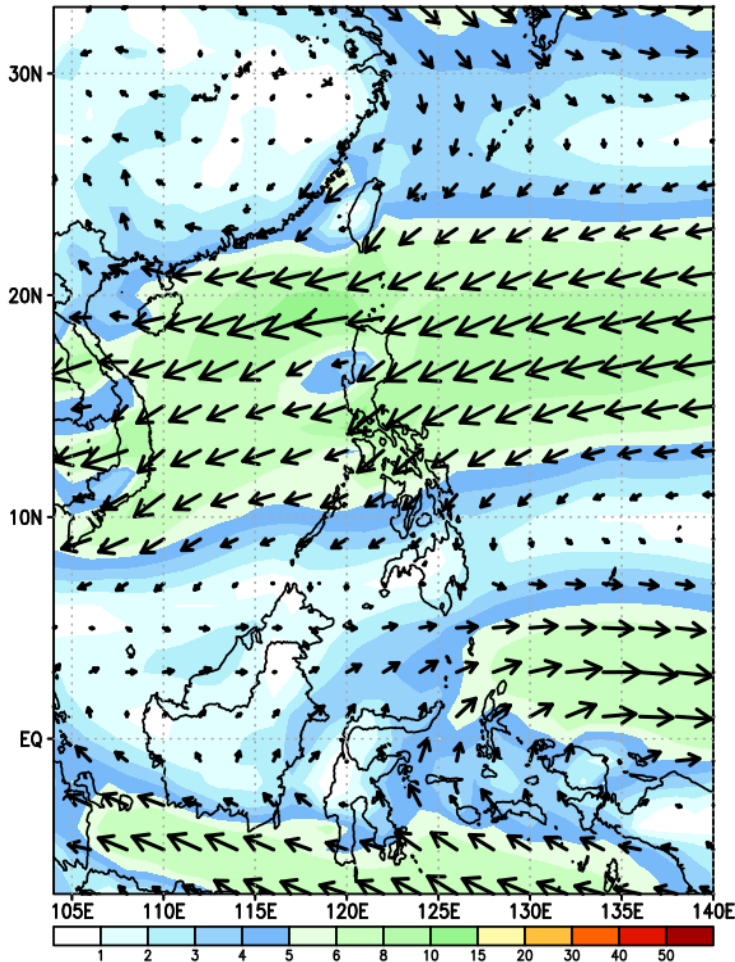
Probability to Exceed 200mm

- Low in most parts of the country.

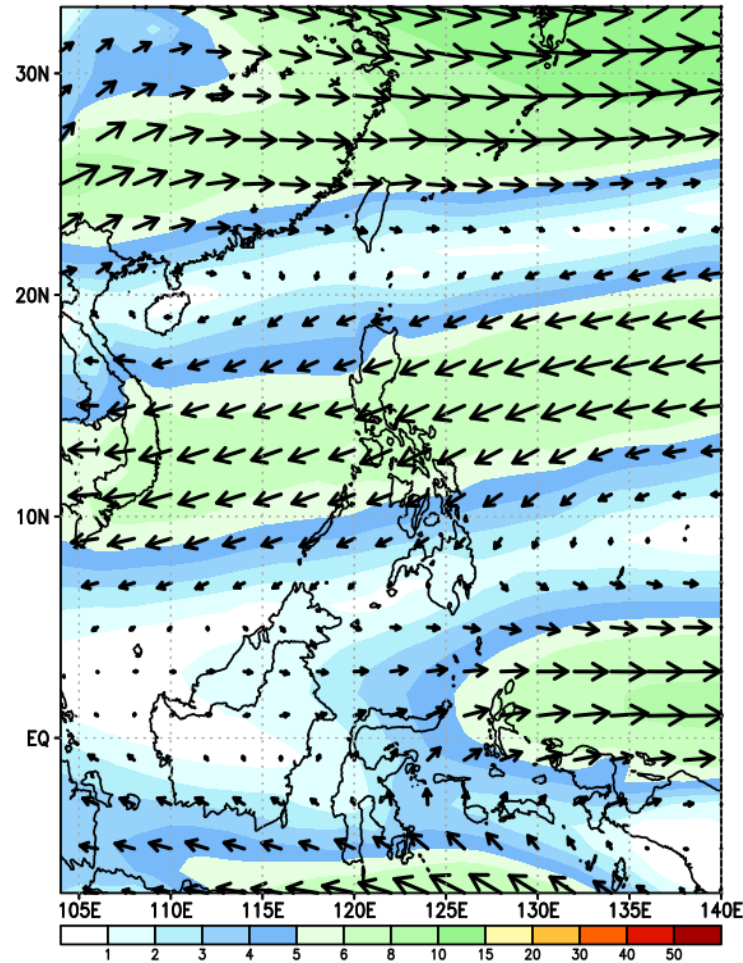
GEFS Week-2 Forecasts: Wind Forecast

Week 2: Nov 10-16, 2023

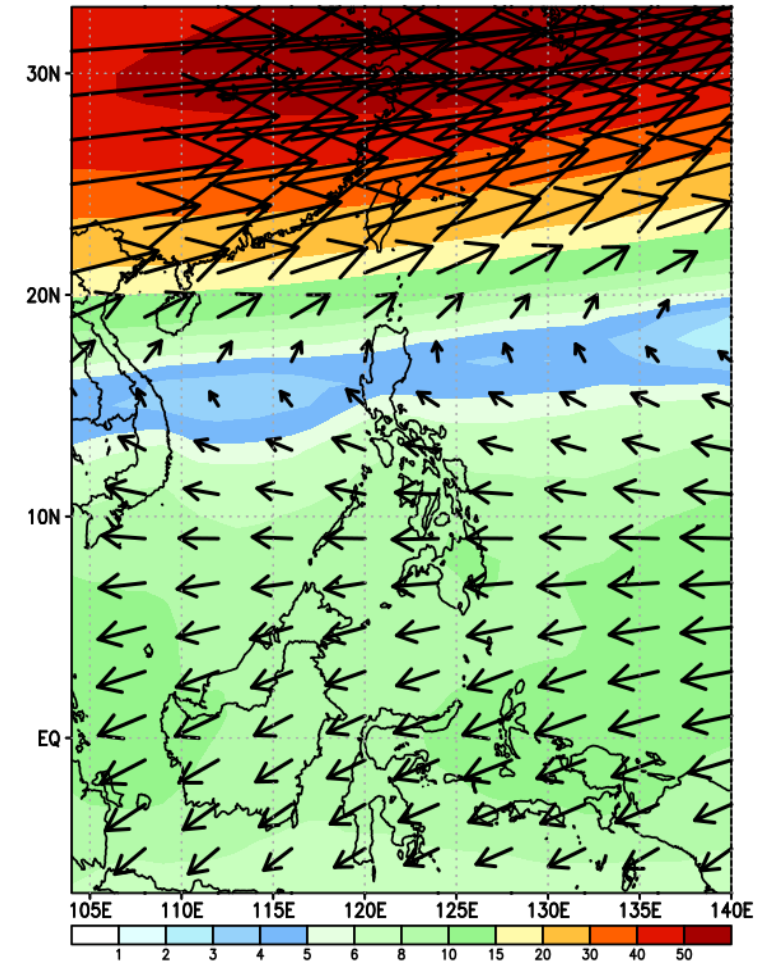
GEFS Week-2 850-hPa Wind Total
Valid: 20231110 - 20231116



GEFS Week-2 700-hPa Wind Total
Valid: 20231110 - 20231116

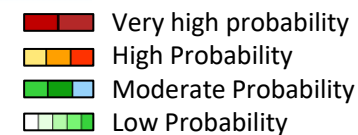


GEFS Week-2 200-hPa Wind Total
Valid: 20231110 - 20231116



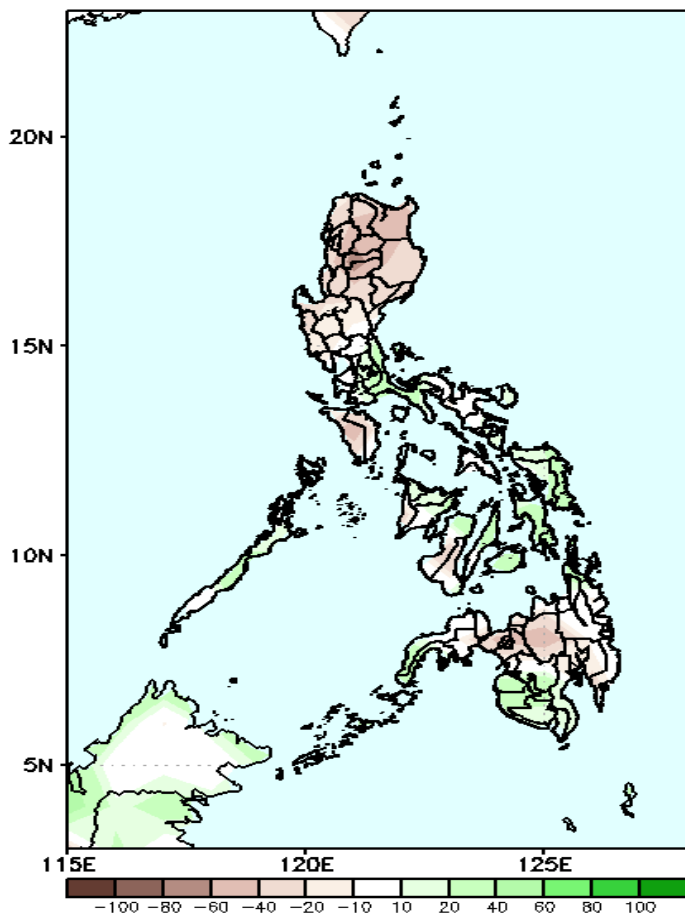
Easterlies affecting most parts of the country.

Precipitation Anomaly and Exceedance Probability > 25/50 mm



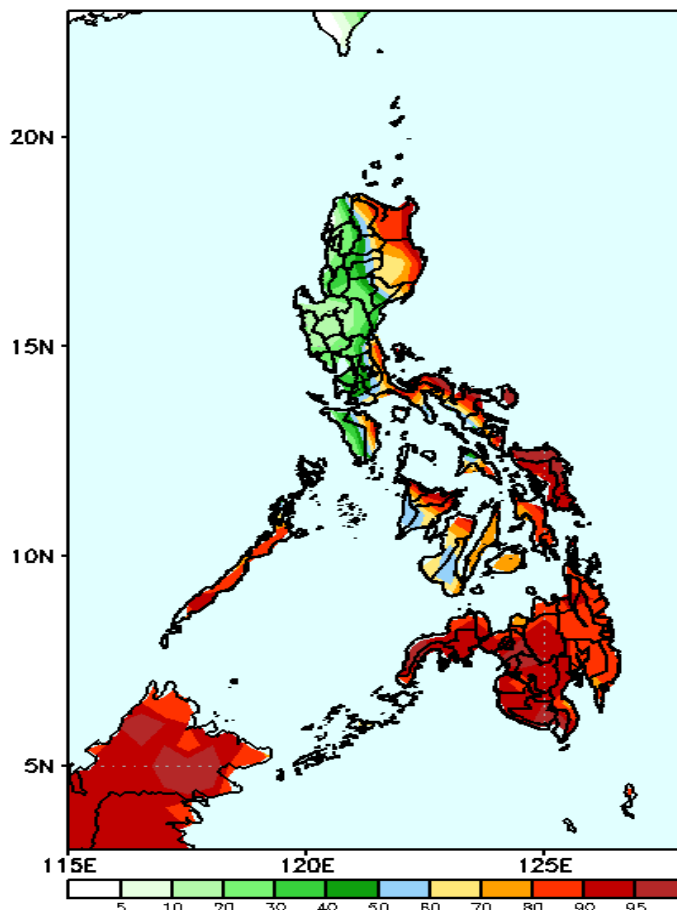
Week 2: Nov 10-16, 2023

GEFS Week-2 Precip Anomaly
Valid: 20231110 - 20231116



Rainfall deficit of 20-40mm is expected in most parts of Luzon, western Visayas, eastern and northern Mindanao while Quezon, Laguna and the rest of Visayas and Mindanao will likely have 20-60mm increase of rainfall.

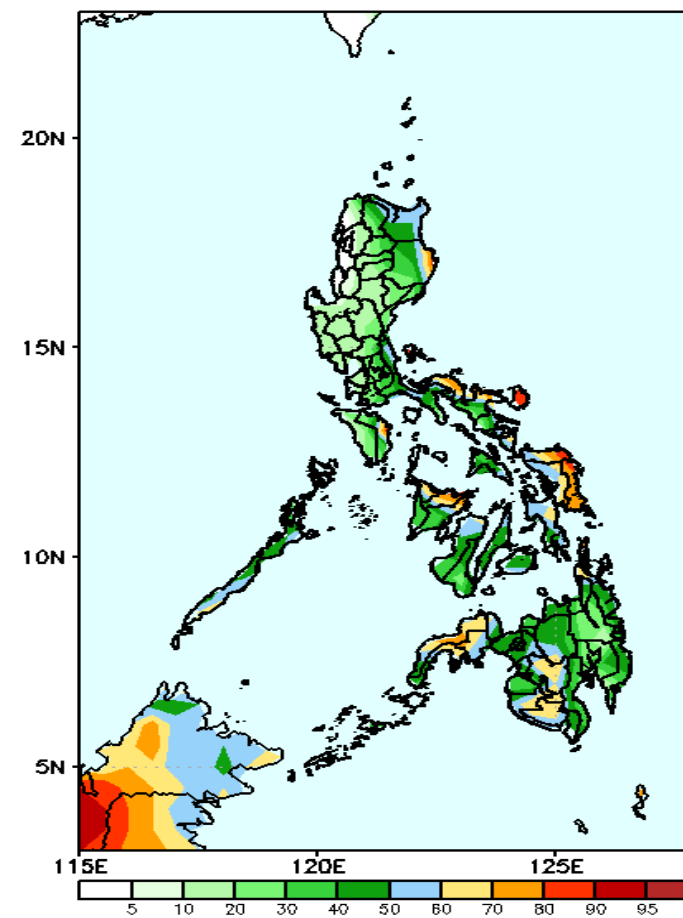
GEFS Week-2 Exceedance Prob. > 25mm
Valid: 20231110 - 20231116



Probability to Exceed 25mm

- High to very high over the eastern sections of Luzon, Palawan, Or. Mindoro and most parts of Visayas and Mindanao;
- Low to Moderate over the rest of Luzon.

GEFS Week-2 Exceedance Prob. > 50mm
Valid: 20231110 - 20231116



Probability to Exceed 50mm

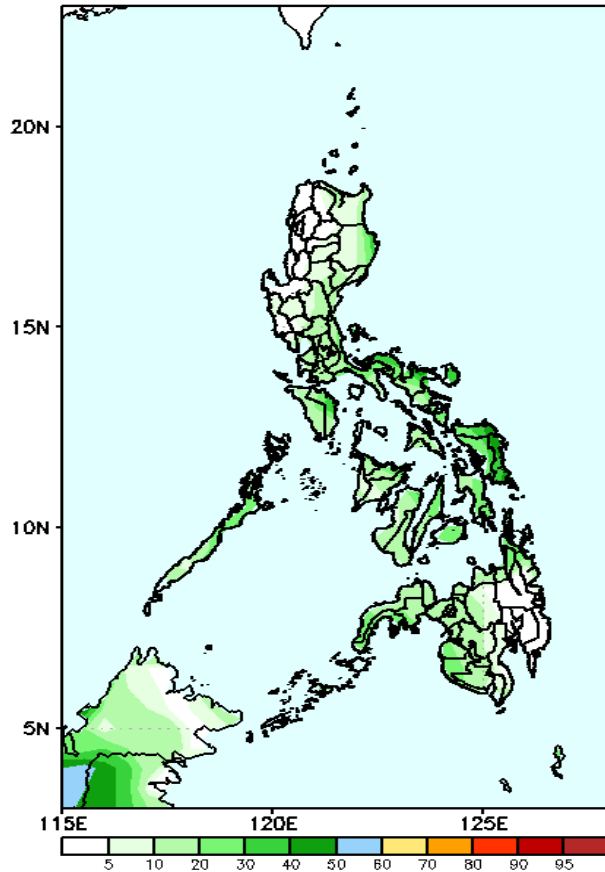
- Moderate to high over some parts of Isabela, Bicol Region, Oriental Mindoro, Eastern and Western Visayas, Zamboanga Peninsula and Western Mindanao;
- Low over the rest of the country.

Exceedance Probability > 100/150/200 mm

Week 2: Nov 10-16, 2023

Very high probability
High Probability
Moderate Probability
Low Probability

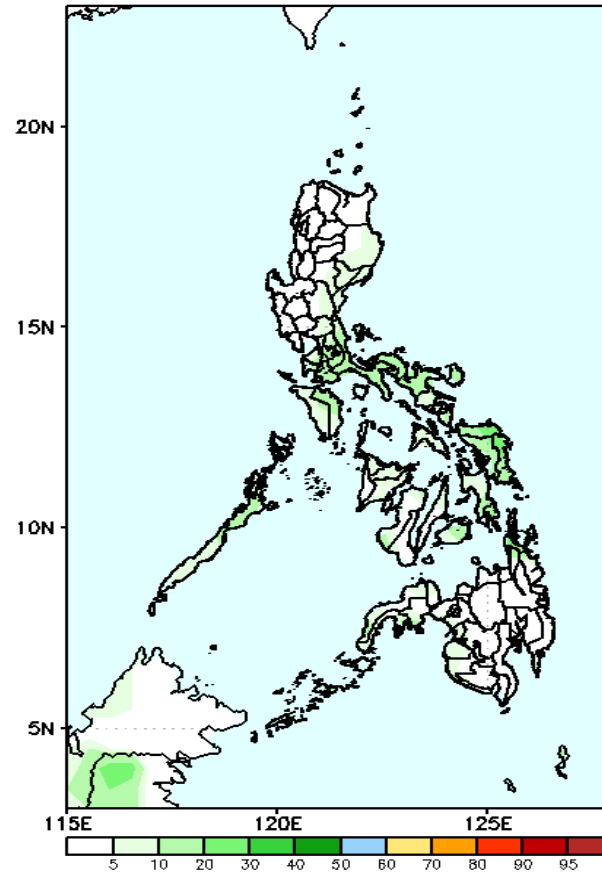
GEFS Week-2 Exceedance Prob. > 100mm
Valid: 20231110 – 20231116



Probability to Exceed 100mm

- Low in most parts of the country.

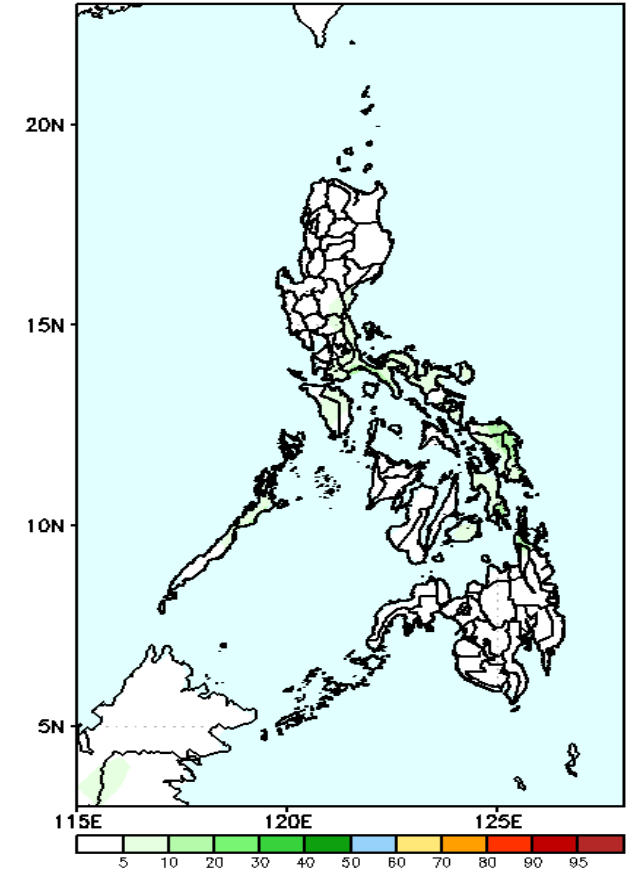
GEFS Week-2 Exceedance Prob. > 150mm
Valid: 20231110 – 20231116



Probability to Exceed 150mm

- Low in most parts of the country.

GEFS Week-2 Exceedance Prob. > 200mm
Valid: 20231110 – 20231116

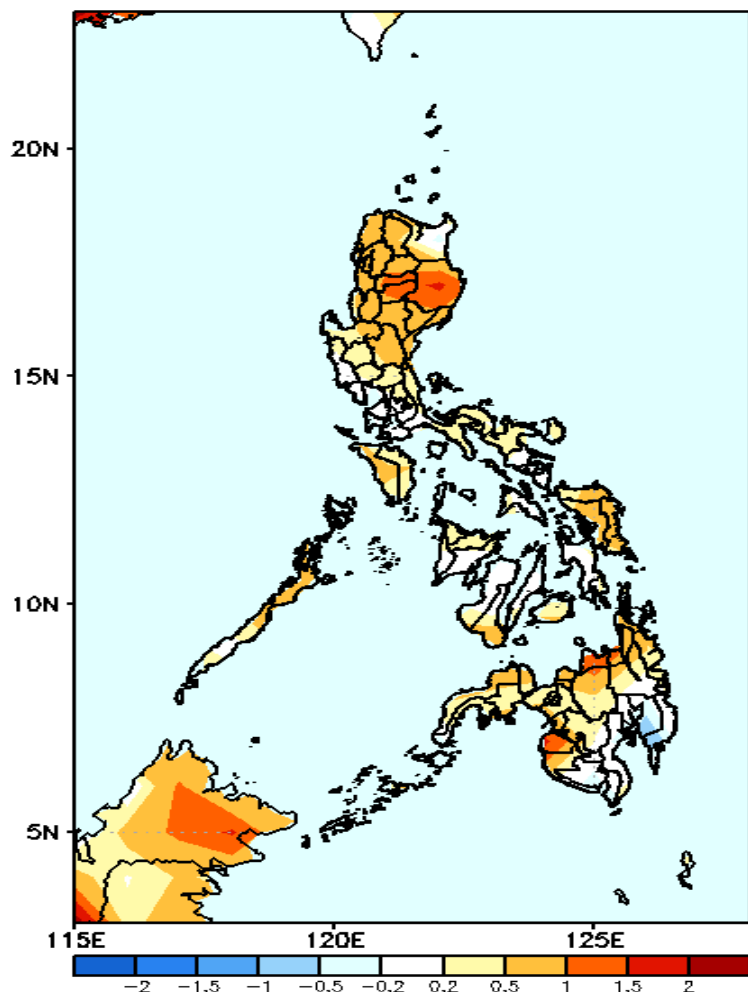


Probability to Exceed 200mm

- Low in most parts of the country.

GEFS Week-1 & 2 Forecasts: T2m Anomaly

GEFS Week-1 T2m Anomaly
Valid: 20231103 – 20231109



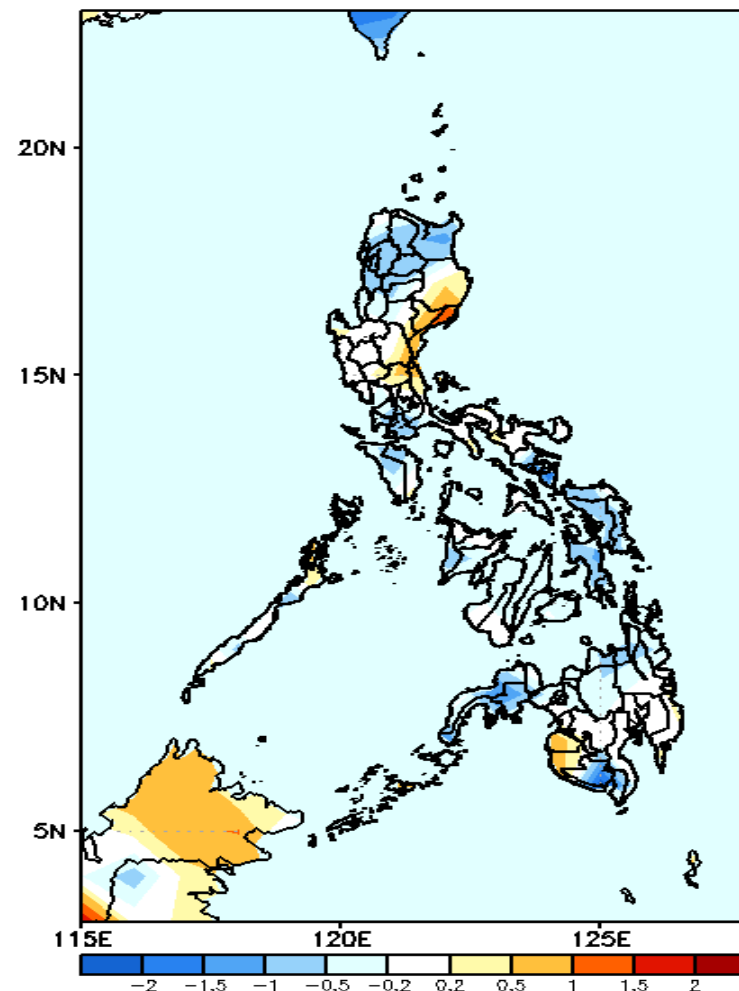
2m Temperature Week 1: Nov 03-09, 2023

Average to warmer than average surface air temperature will likely be experienced in most parts of the country.



The Weather and Climate Authority

GEFS Week-2 T2m Anomaly
Valid: 20231110 – 20231116



2m Temperature Week 2: Nov 10-16, 2023

Average to cooler than average surface air temperature will likely be experienced in most parts of the country except in some areas in eastern Luzon, Maguindanao and Sultan Kudarat where slightly warmer to warmer than average temperature is expected.

