



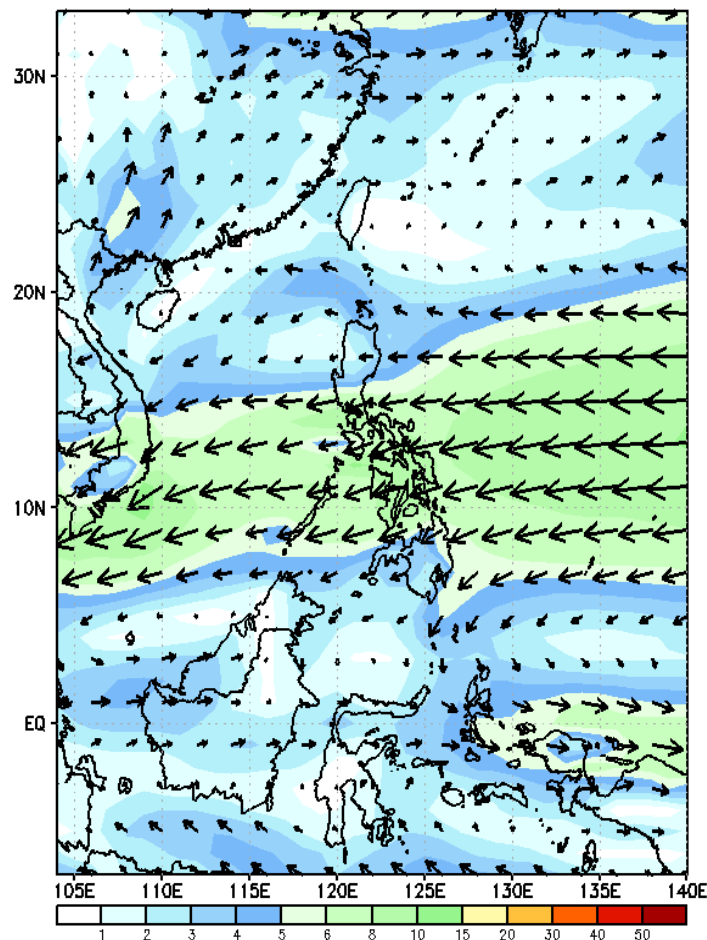
Week 1 & Week 2 Forecast for the Philippines using GEFS Model



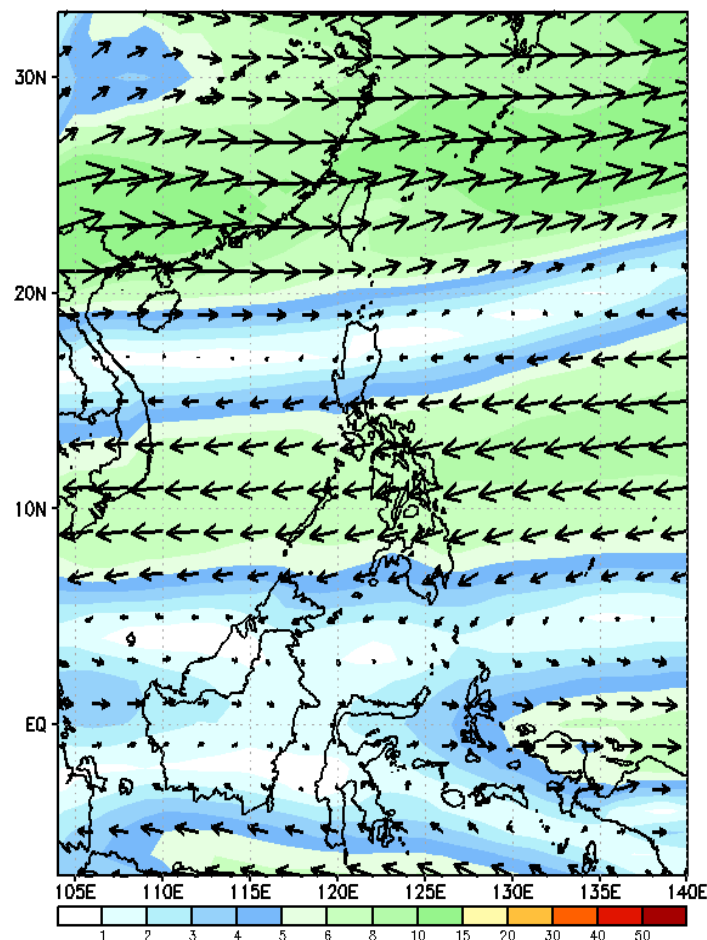
GEFS Week-1 Forecasts: Wind Forecast

Week 1: Dec 04-10, 2023

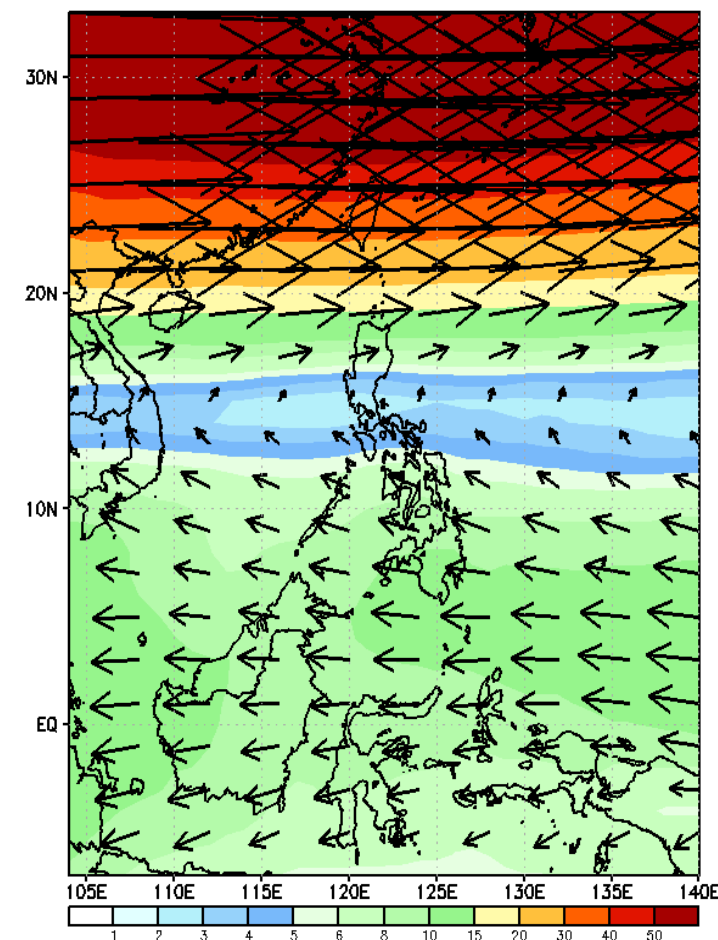
GEFS Week-1 850-hPa Wind Total
Valid: 20231204 - 20231210



GEFS Week-1 700-hPa Wind Total
Valid: 20231204 - 20231210

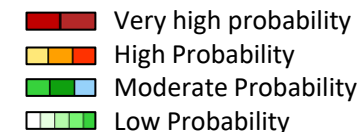


GEFS Week-1 200-hPa Wind Total
Valid: 20231204 - 20231210



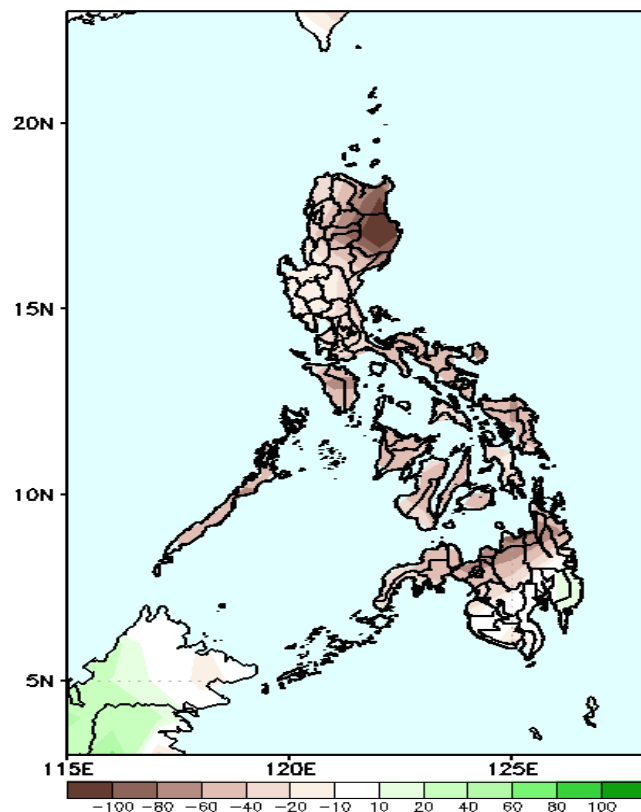
Easterlies affecting most parts of the country.

Precipitation Anomaly and Exceedance Probability > 25/50 mm



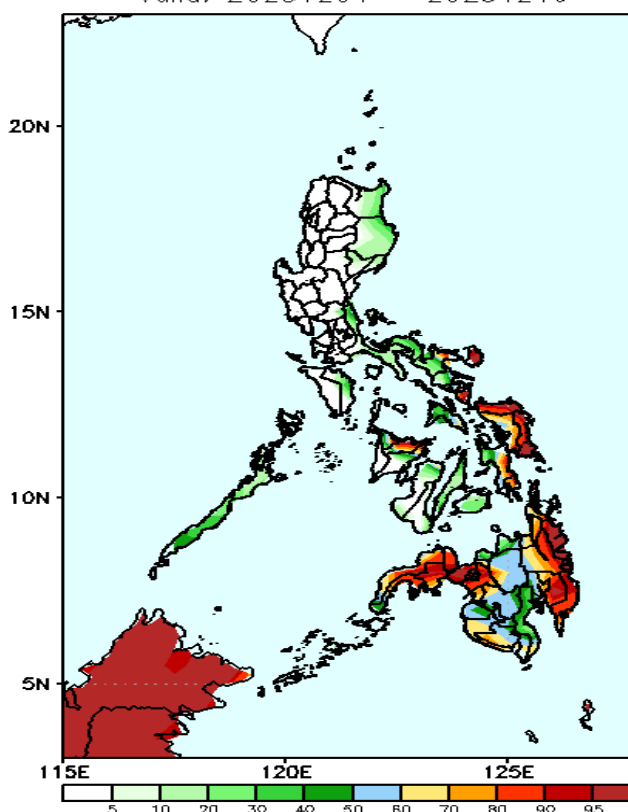
Week 1: Dec 04-10, 2023

GEFS Week-1 Precip Anomaly
Valid: 20231204 - 20231210



Rainfall deficit of more than 100mm is expected in Cagayan Valley and 20-80mm for the rest of the country.

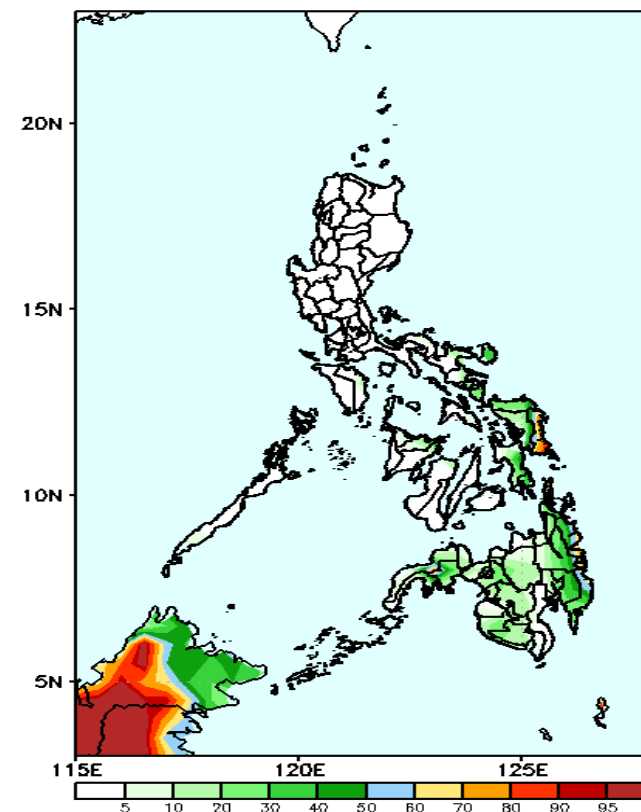
GEFS Week-1 Exceedance Prob. > 25mm
Valid: 20231204 - 20231210



Probability to Exceed 25mm

- High to very high over Catanduanes, Sorsogon, Northern and Eastern Samar, Eastern Mindanao and Zamboanga Peninsula;
- Moderate to high over northern part of Camarines Norte, Samar, Leyte provinces, Aklan, Capiz and the rest of Mindanao;
- Low to moderate over the rest of Luzon and Visayas.

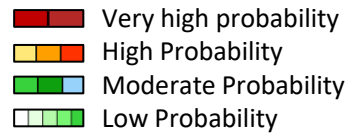
GEFS Week-1 Exceedance Prob. > 50mm
Valid: 20231204 - 20231210



Probability to Exceed 50mm

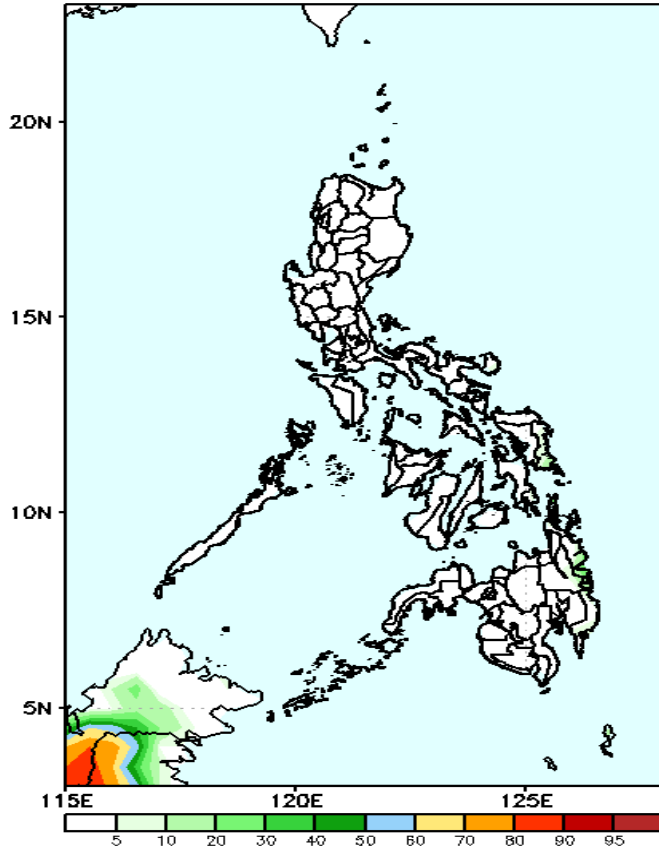
- Moderate to high over Eastern Samar;
- Low to moderate over the rest of Eastern Visayas and most parts of Mindanao;
- Low over the rest of the country.

Exceedance Probability > 100/150/200 mm



Week 1: Dec 04-10, 2023

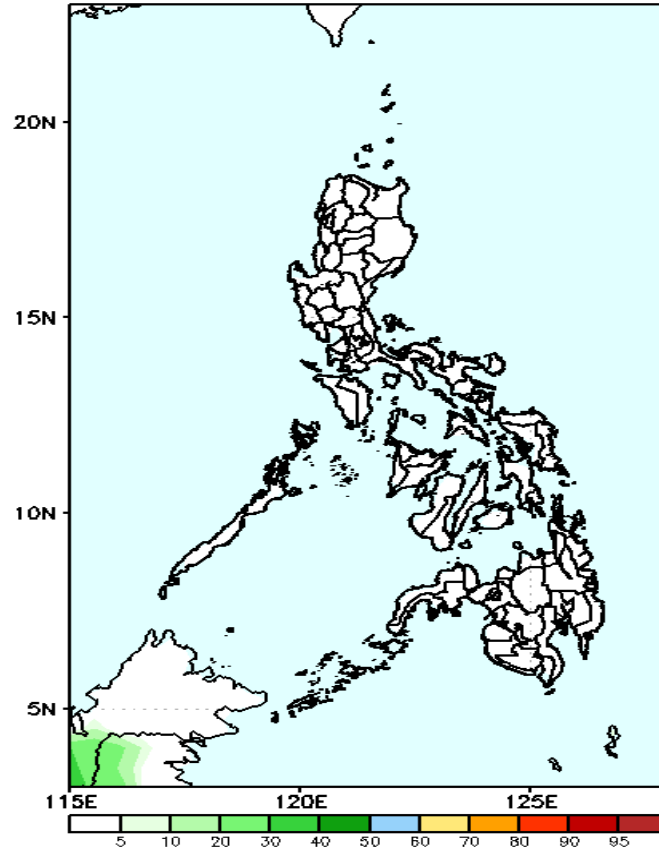
GEFS Week-1 Exceedance Prob. > 100mm
Valid: 20231204 - 20231210



Probability to Exceed 100mm

- Low over most parts of the country.

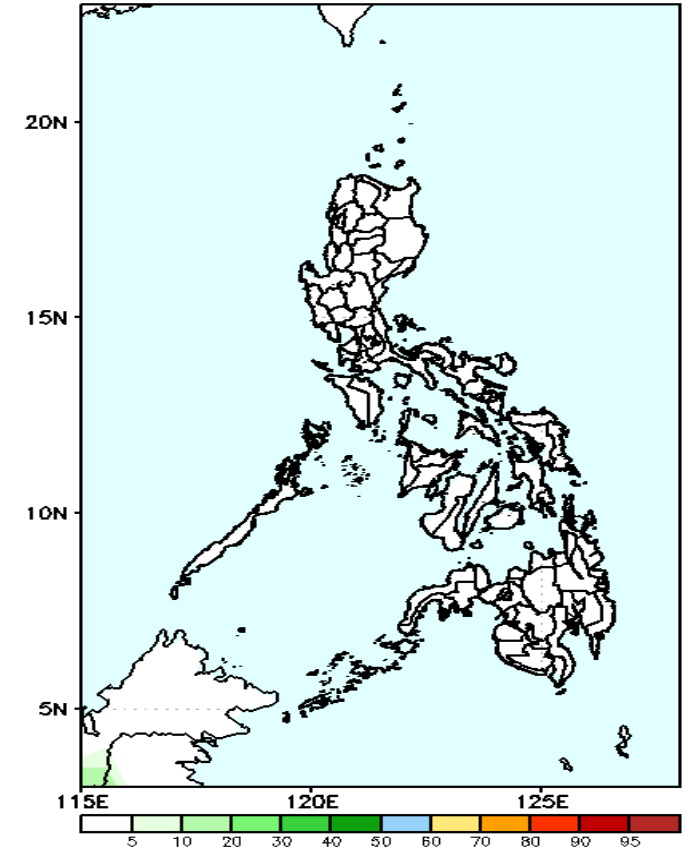
GEFS Week-1 Exceedance Prob. > 150mm
Valid: 20231204 - 20231210



Probability to Exceed 150mm

- Low over most parts of the country.

GEFS Week-1 Exceedance Prob. > 200mm
Valid: 20231204 - 20231210



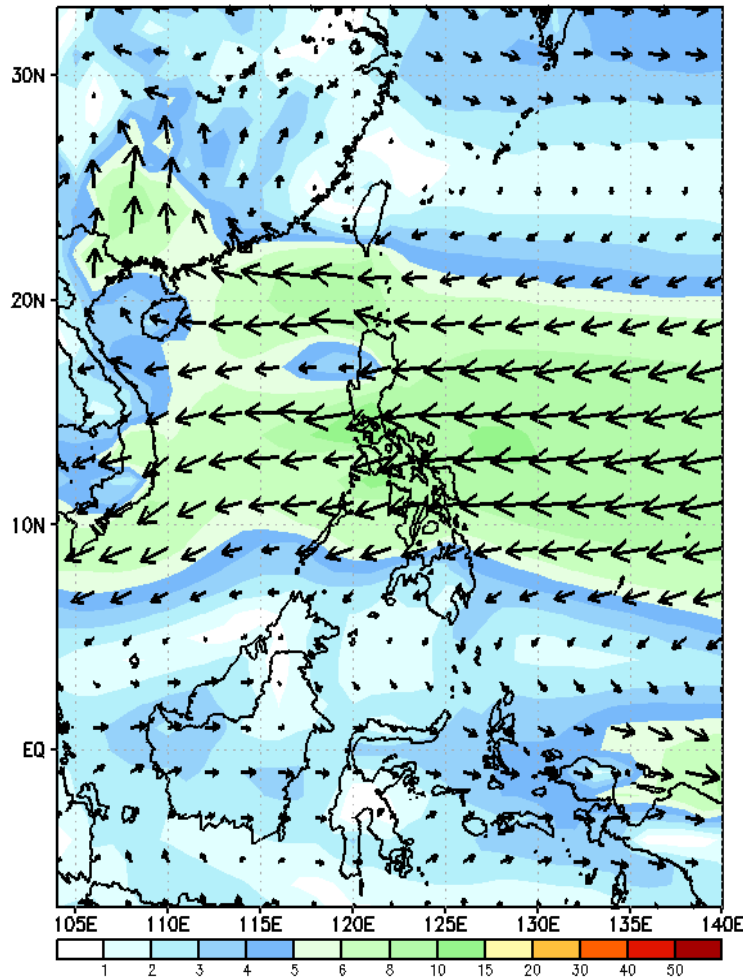
Probability to Exceed 200mm

- Low in most parts of the country.

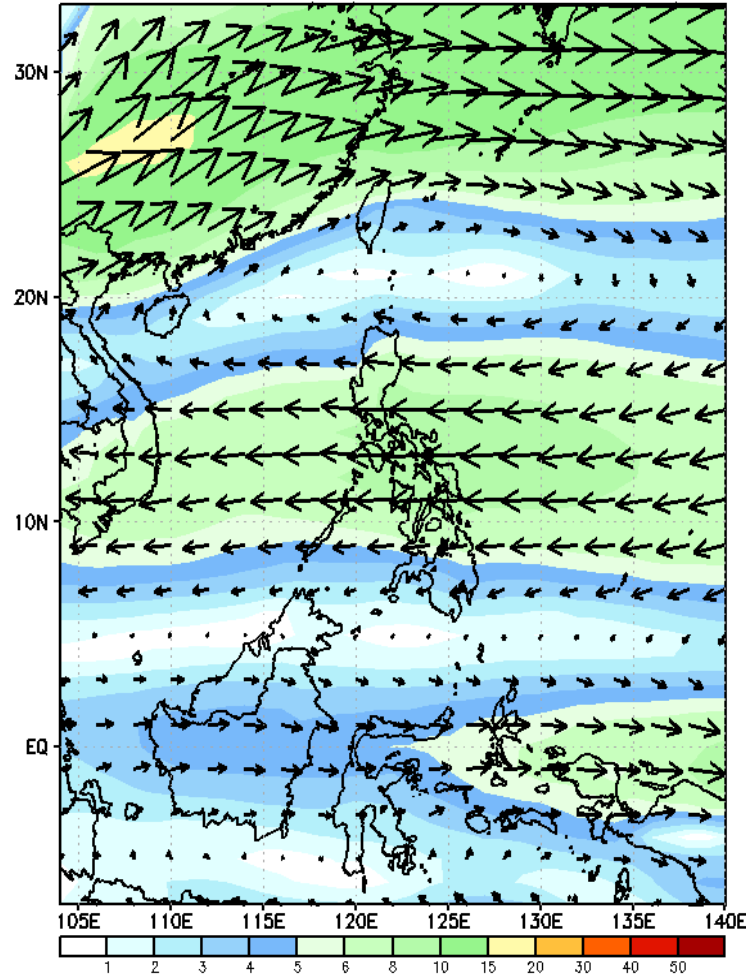
GEFS Week-2 Forecasts: Wind Forecast

Week 2: Dec 11-17, 2023

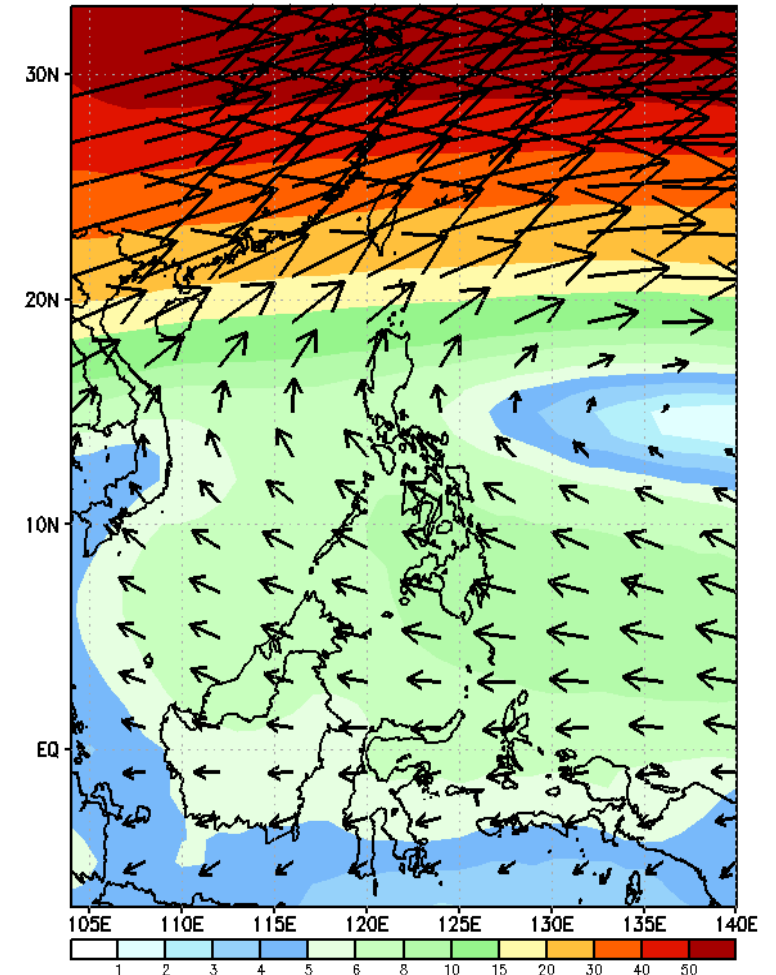
GEFS Week-2 850-hPa Wind Total
Valid: 20231211 - 20231217



GEFS Week-2 700-hPa Wind Total
Valid: 20231211 - 20231217



GEFS Week-2 200-hPa Wind Total
Valid: 20231211 - 20231217



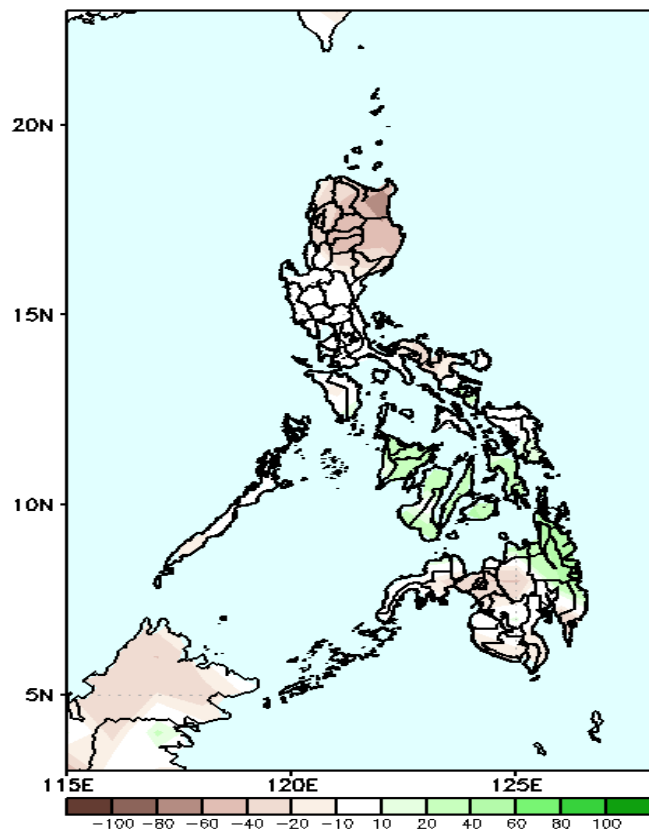
Easterlies affecting most parts of the country.

Precipitation Anomaly and Exceedance Probability > 25/50 mm



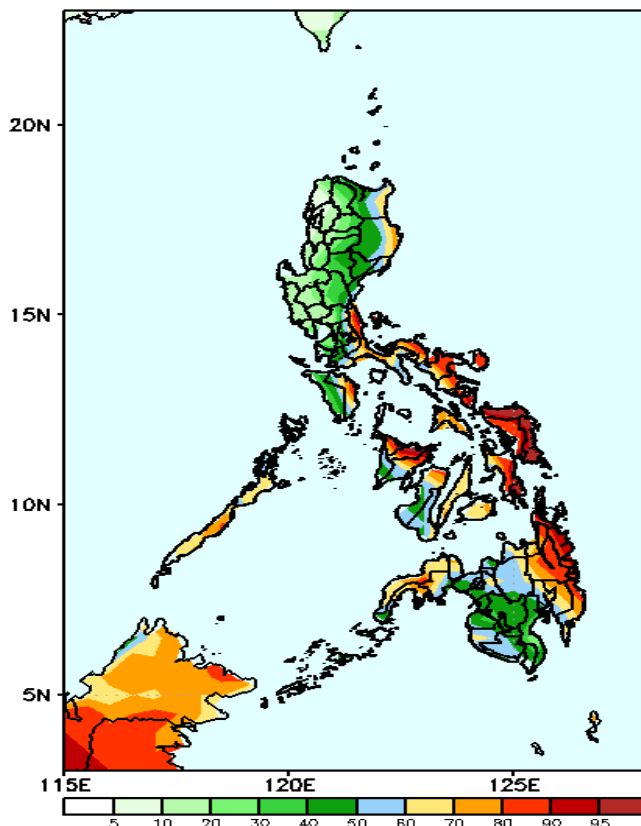
Week 2: Dec 11-17, 2023

GEFS Week-2 Precip Anomaly
Valid: 20231211 - 20231217



Rainfall deficit of 20-70mm is expected in most parts of Luzon, Samar provinces, western and central Mindanao while increase of rainfall of 20-70mm is more likely for the rest of the country.

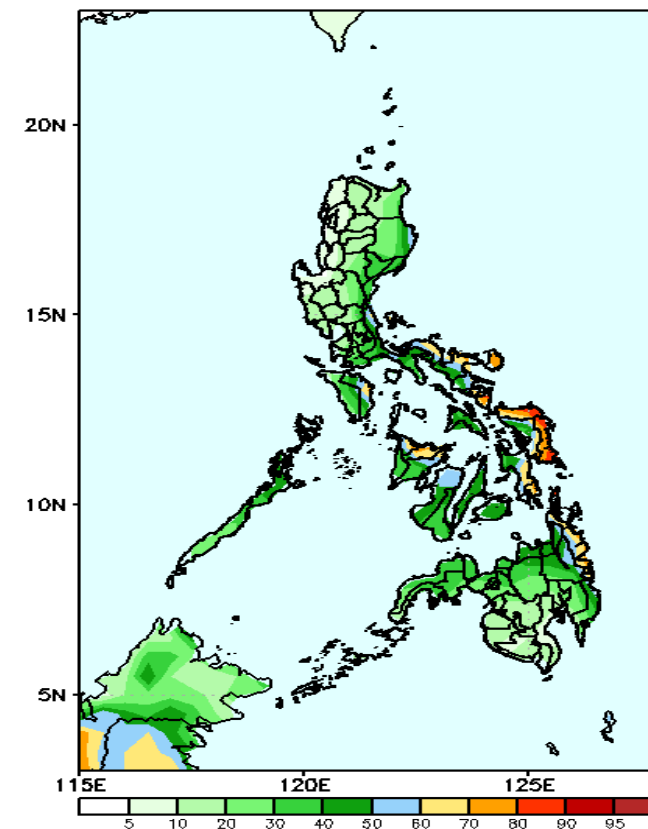
GEFS Week-2 Exceedance Prob. > 25mm
Valid: 20231211 - 20231217



Probability to Exceed 25mm

- High to very high over Capiz, Eastern Visayas, and the eastern sections of Bicol Region and Mindanao;
- Moderate to high over the rest of Eastern Luzon, MIMAROPA, and the rest of Visayas and Mindanao;
- Low to moderate over the rest of Luzon.

GEFS Week-2 Exceedance Prob. > 50mm
Valid: 20231211 - 20231217



Probability to Exceed 50mm

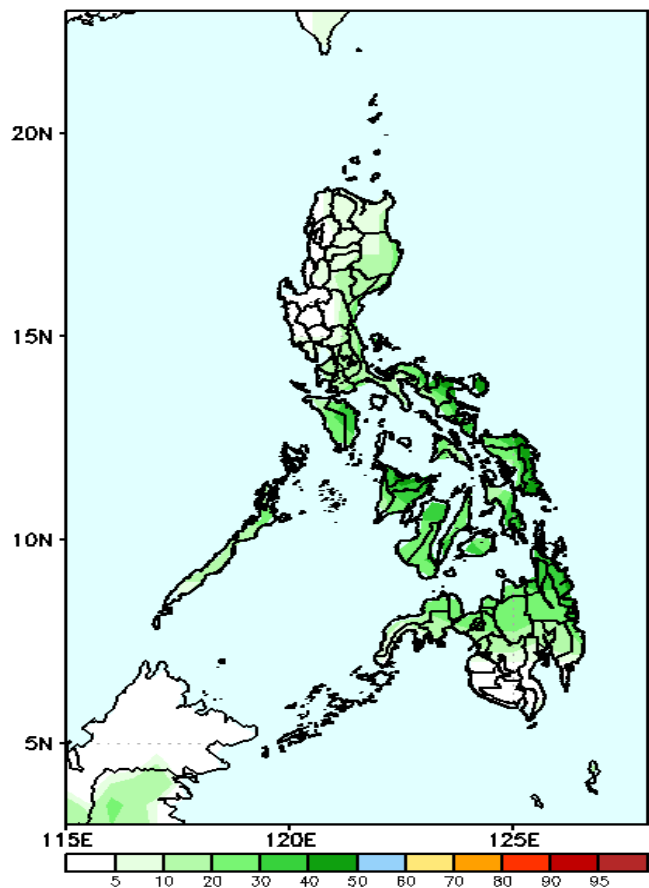
- Moderate to high over Quezon, Oriental Mindoro, Bicol Region, most parts of Visayas, Dinagat Island, and Surigao provinces;
- Low to moderate elsewhere.

Exceedance Probability > 100/150/200 mm

Week 2: Dec 11-17, 2023

- Very high probability
- High Probability
- Moderate Probability
- Low Probability

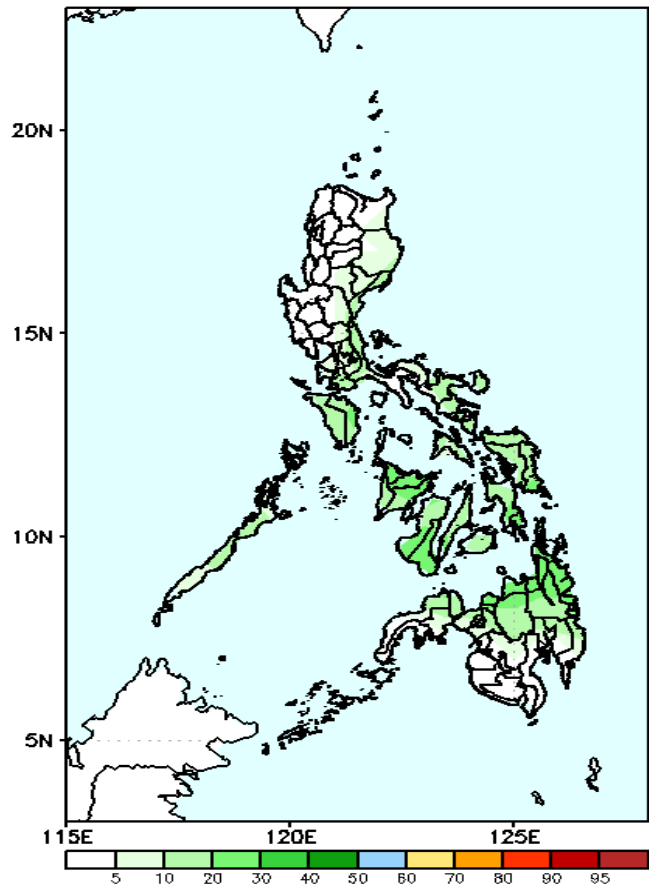
GEFS Week-2 Exceedance Prob. > 100mm
Valid: 20231211 – 20231217



Probability to Exceed 100mm

- Low to moderate across the country.

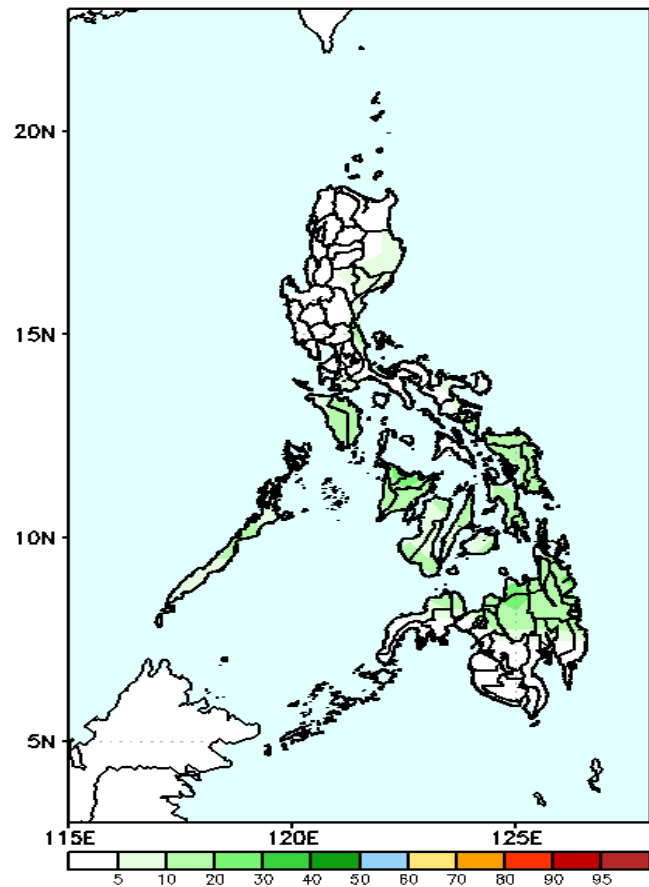
GEFS Week-2 Exceedance Prob. > 150mm
Valid: 20231211 – 20231217



Probability to Exceed 150mm

- Low in most parts of the country.

GEFS Week-2 Exceedance Prob. > 200mm
Valid: 20231211 – 20231217

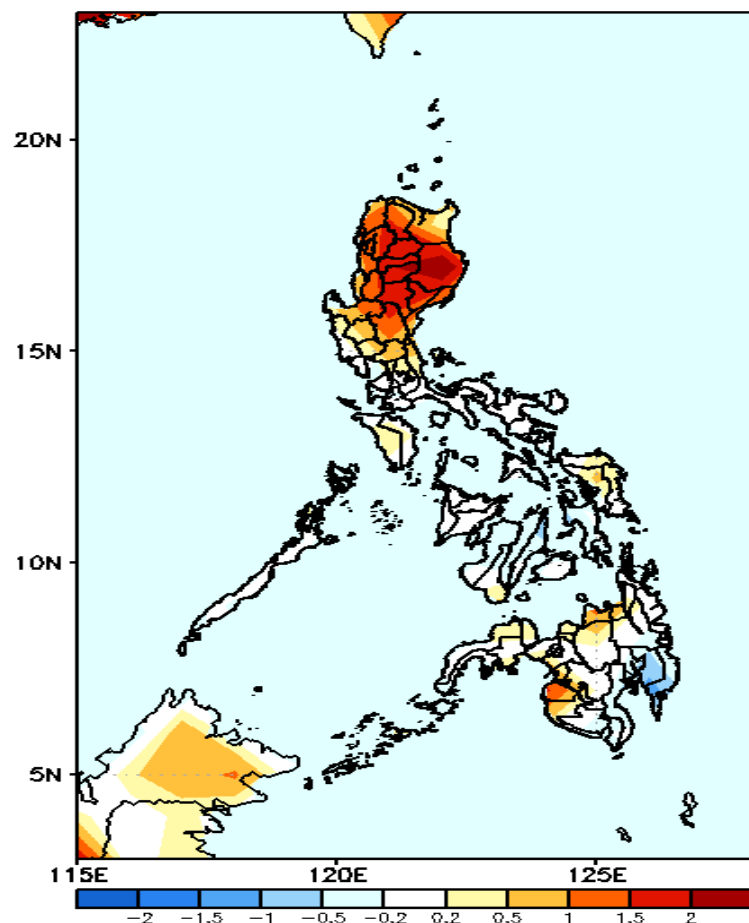


Probability to Exceed 150mm

- Low in most parts of the country.

GEFS Week-1 & 2 Forecasts: T2m Anomaly

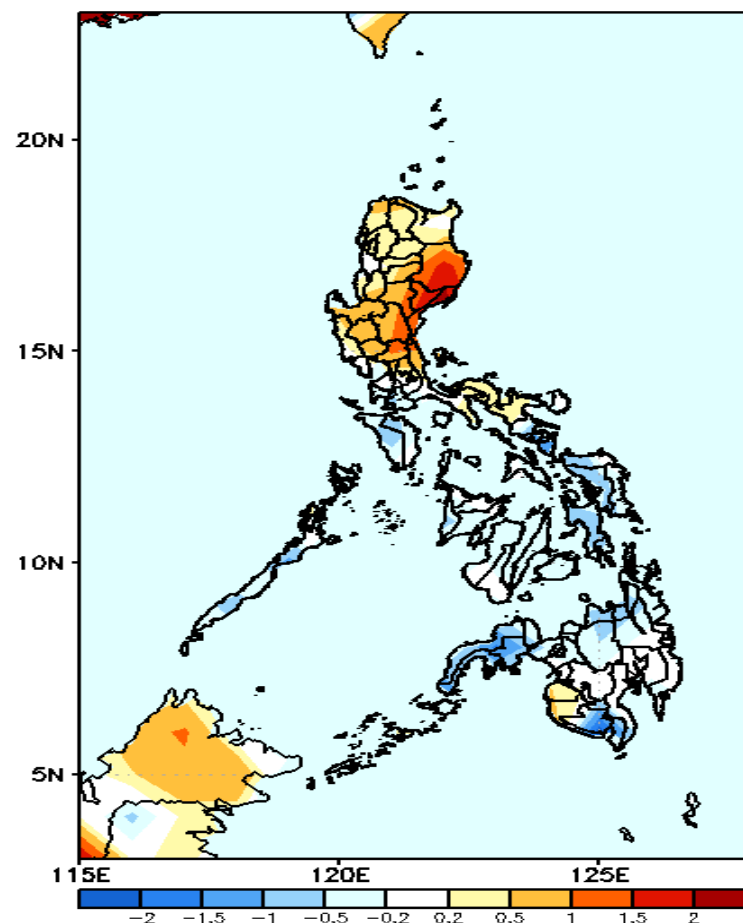
GEFS Week-1 T2m Anomaly
Valid: 20231204 – 20231210



2m Temperature Week 1: Dec 04-10, 2023

Warmer than average surface air temperature will likely be experienced in most parts of northern & central Luzon and Maguindanao while average to slightly warmer for the rest of the country except in Compostela Valley and Davao Oriental where slightly cooler than average temperature is expected

GEFS Week-2 T2m Anomaly
Valid: 20231211 – 20231217



2m Temperature Week 2: Dec 11-17, 2023

Average to warmer than average surface air temperature will likely be experienced in most parts of Luzon, while average to cooler than average surface air temperature will likely be experienced in Visayas and Mindanao.