



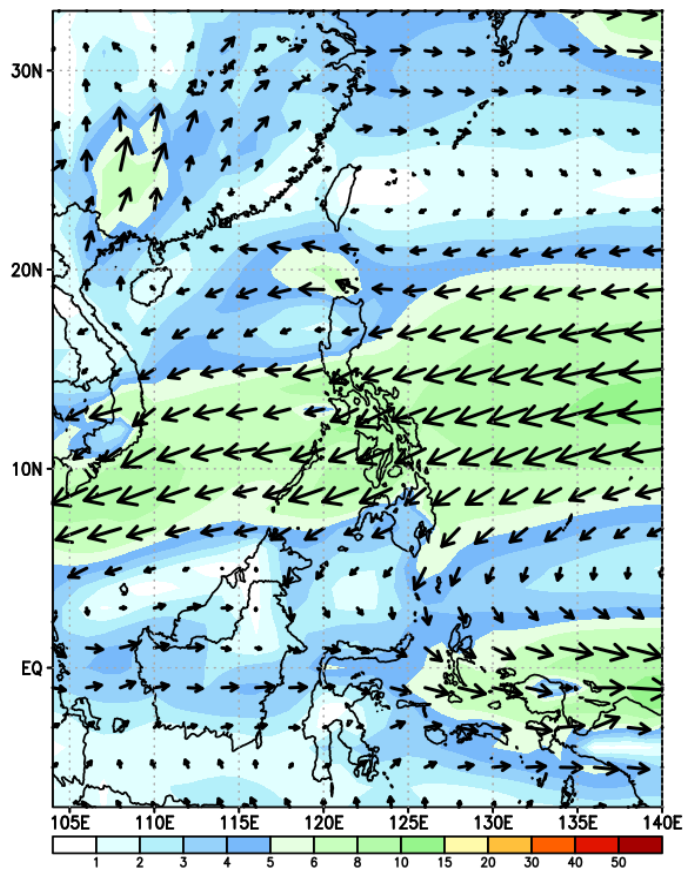
Week 1 & Week 2 Forecast for the Philippines using GEFS Model



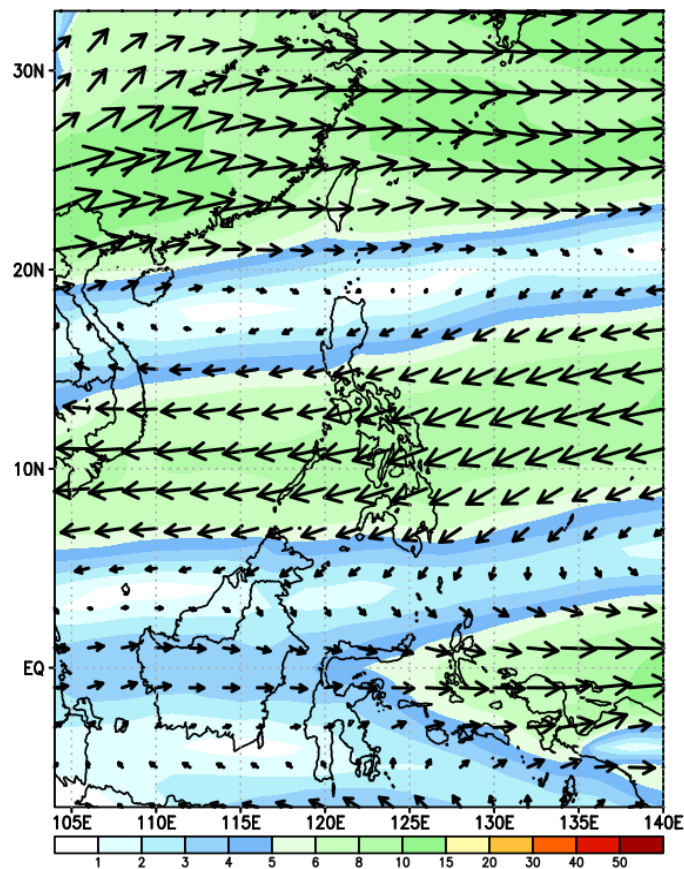
GEFS Week-1 Forecasts: Wind Forecast

Week 1: Dec 06-12, 2023

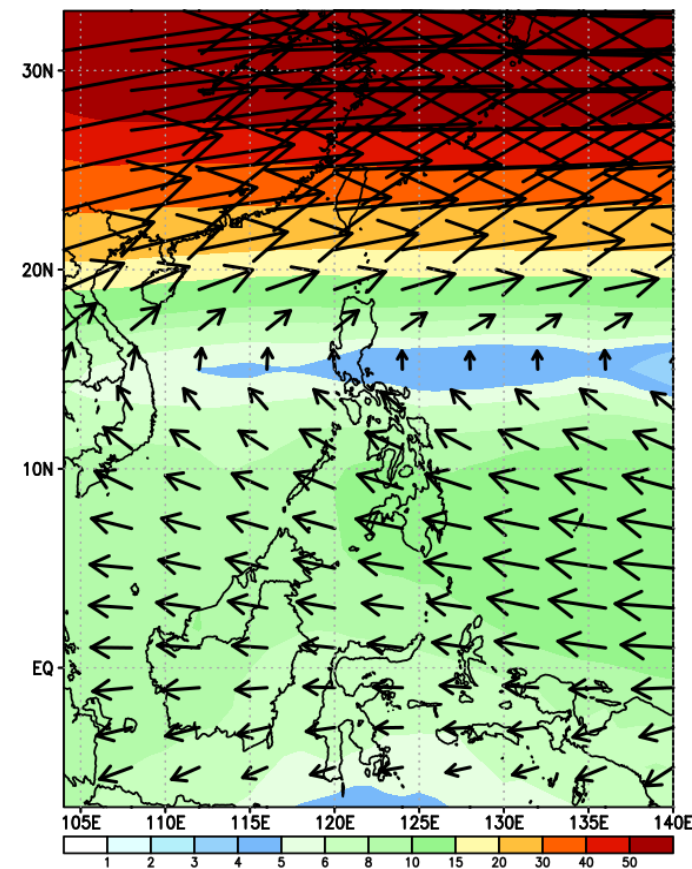
GEFS Week-1 850-hPa Wind Total
Valid: 20231206 - 20231212



GEFS Week-1 700-hPa Wind Total
Valid: 20231206 - 20231212

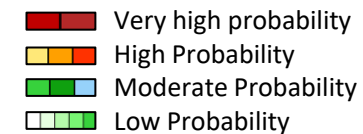


GEFS Week-1 200-hPa Wind Total
Valid: 20231206 - 20231212



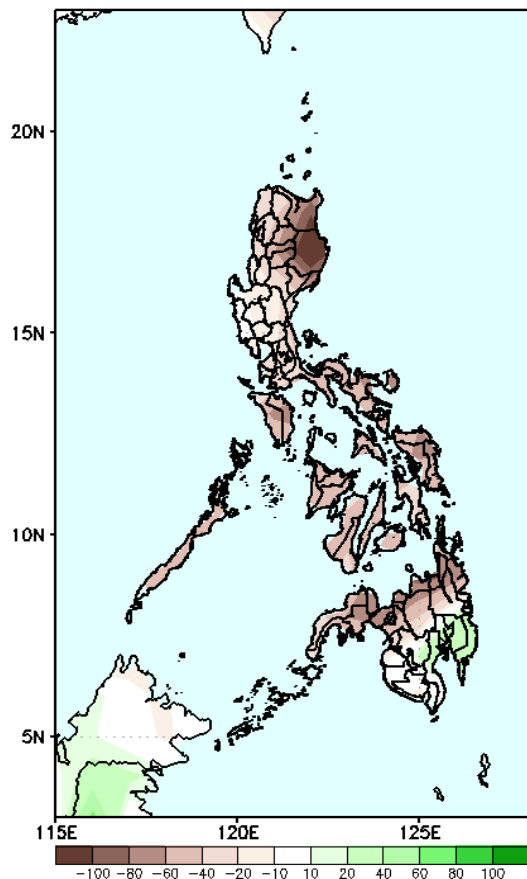
Easterlies affecting most parts of the country.

Precipitation Anomaly and Exceedance Probability > 25/50 mm



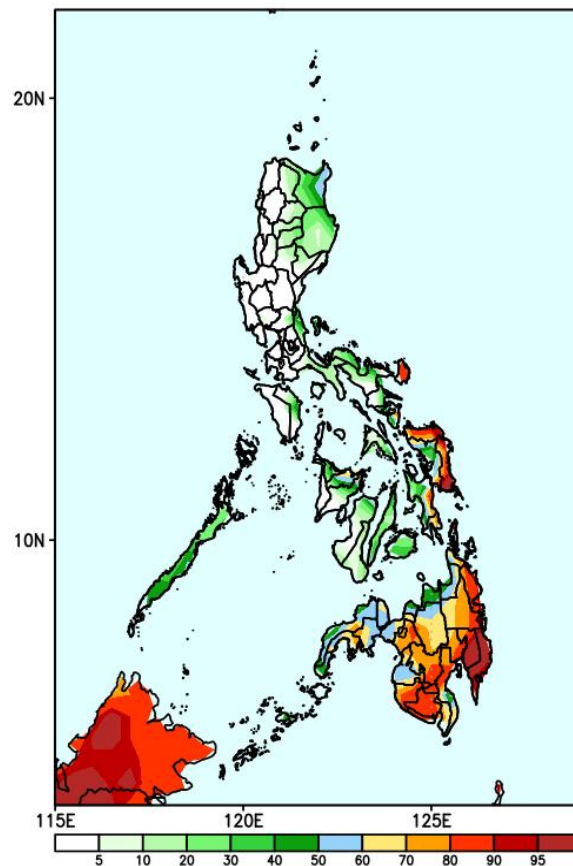
Week 1: Dec 06-12, 2023

GEFS Week-1 Precip. Anomaly
Valid: 20231206 - 20231212



Rainfall deficit of more than 100mm is expected in Cagayan Valley and 40-80mm for the rest of the country except for Davao region where increase of rainfall of 40-60mm is more likely.

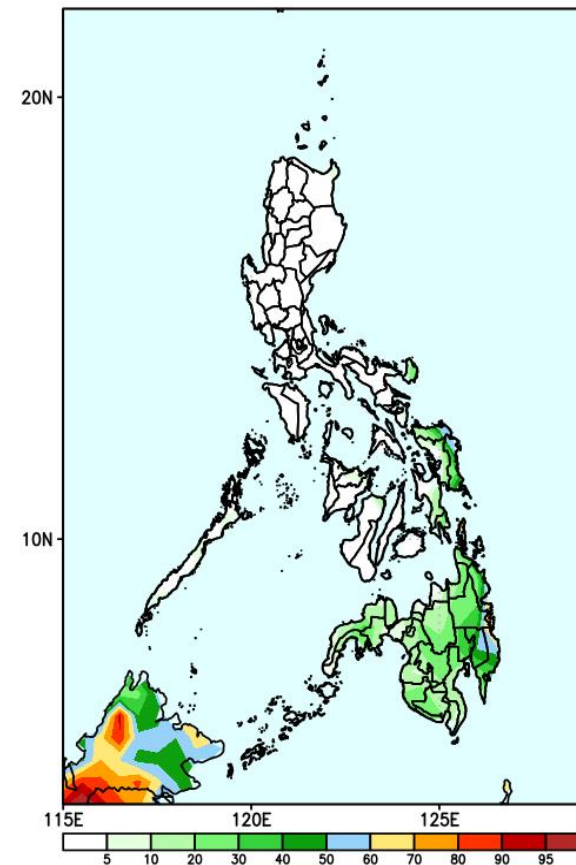
GEFS Week-1 Exceedance Prob. > 25mm
Valid: 20231206 - 20231212



Probability to Exceed 25mm

- High to very high over Catanduanes, Northern and Eastern Samar, and Eastern Mindanao;
- Moderate to high over Sorsogon, north Camarines Sur, Samar, eastern Leyte, northern Capiz, and most parts of Mindanao;
- Low to moderate over Cagayan, Palawan, and northern Negros Occidental;
- Low over the rest of the country.

GEFS Week-1 Exceedance Prob. > 50mm
Valid: 20231206 - 20231212



Probability to Exceed 50mm

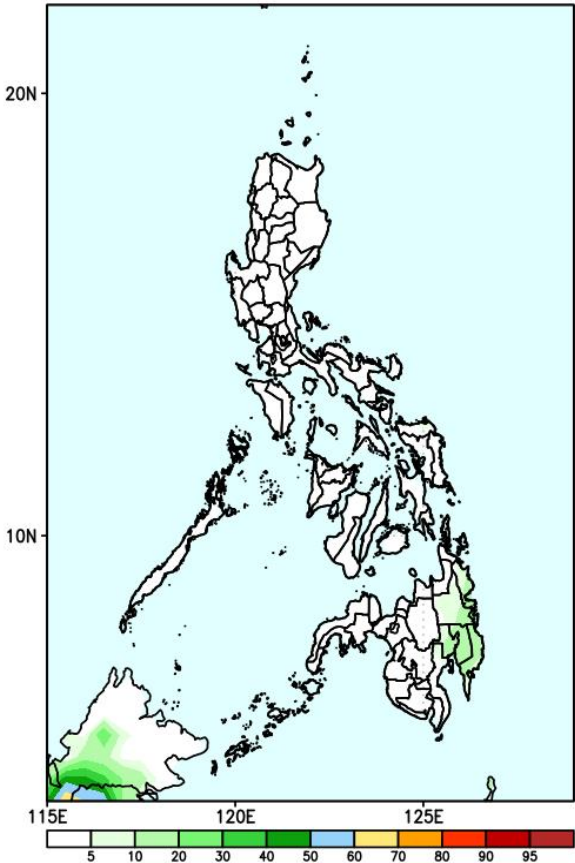
- Low to moderate over eastern Samar, southern Leyte and eastern Mindanao;
- Low over the rest of the country.

Exceedance Probability > 100/150/200 mm

Week 1: Dec 06-12, 2023

- Very high probability
- High Probability
- Moderate Probability
- Low Probability

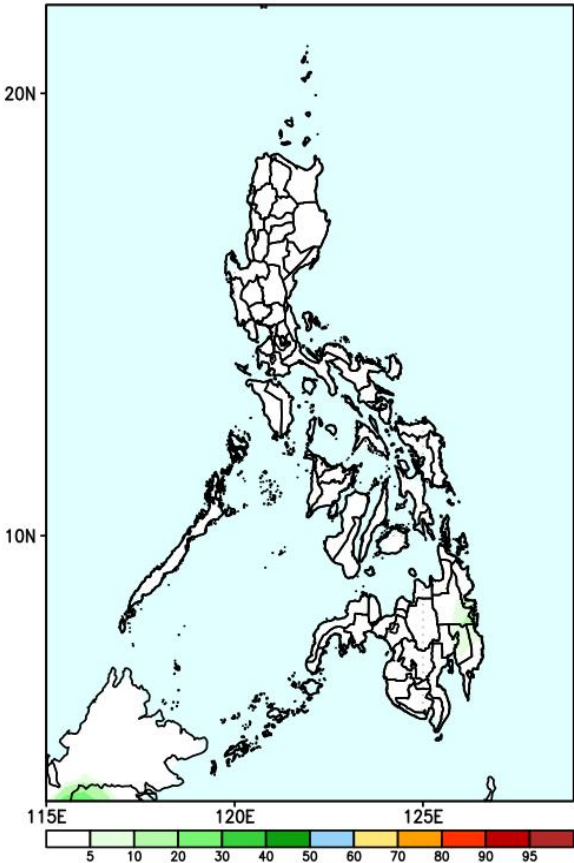
GEFS Week-1 Exceedance Prob. > 100mm
Valid: 20231206 – 20231212



Probability to Exceed 100mm

- Low over most parts of the country.

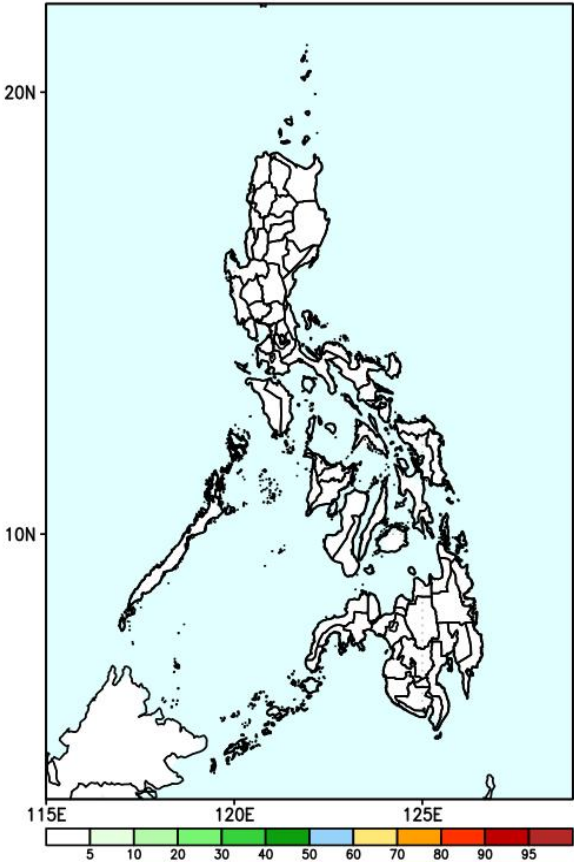
GEFS Week-1 Exceedance Prob. > 150mm
Valid: 20231206 – 20231212



Probability to Exceed 150mm

- Low over most parts of the country.

GEFS Week-1 Exceedance Prob. > 200mm
Valid: 20231206 – 20231212



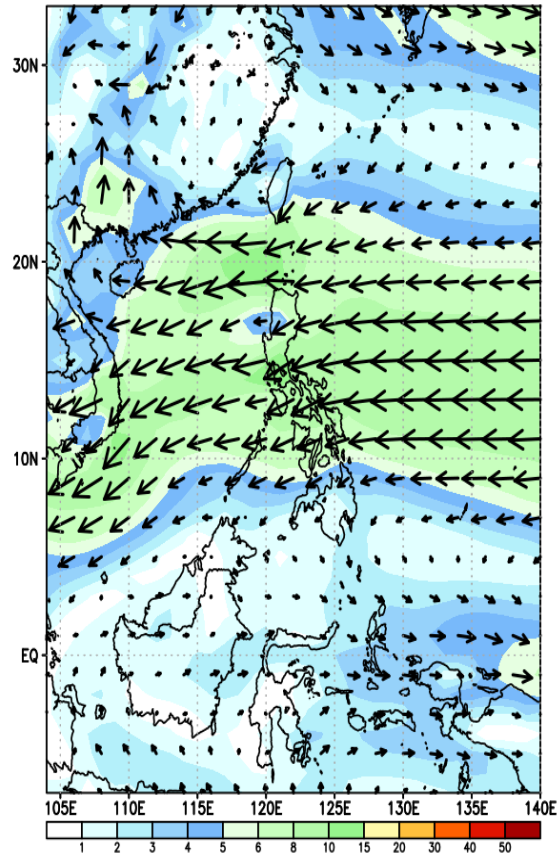
Probability to Exceed 200mm

- Low in most parts of the country.

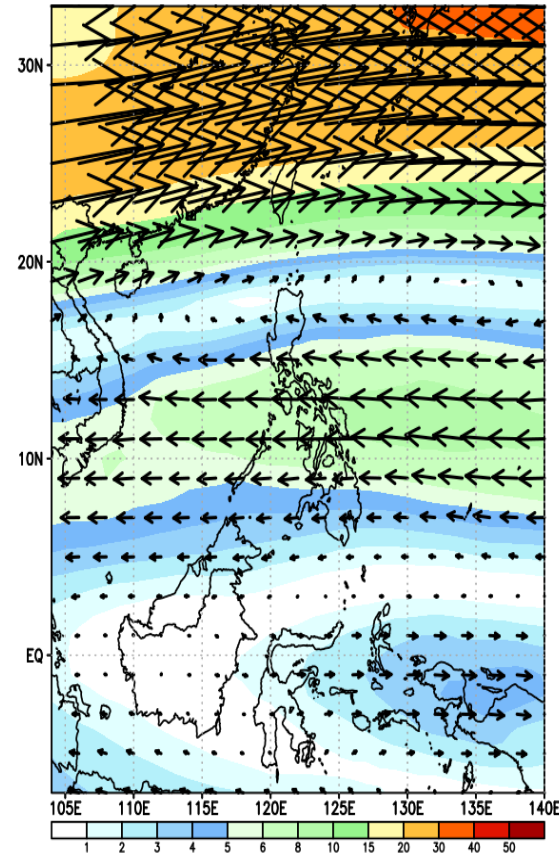
GEFS Week-2 Forecasts: Wind Forecast

Week 2: Dec 13-19, 2023

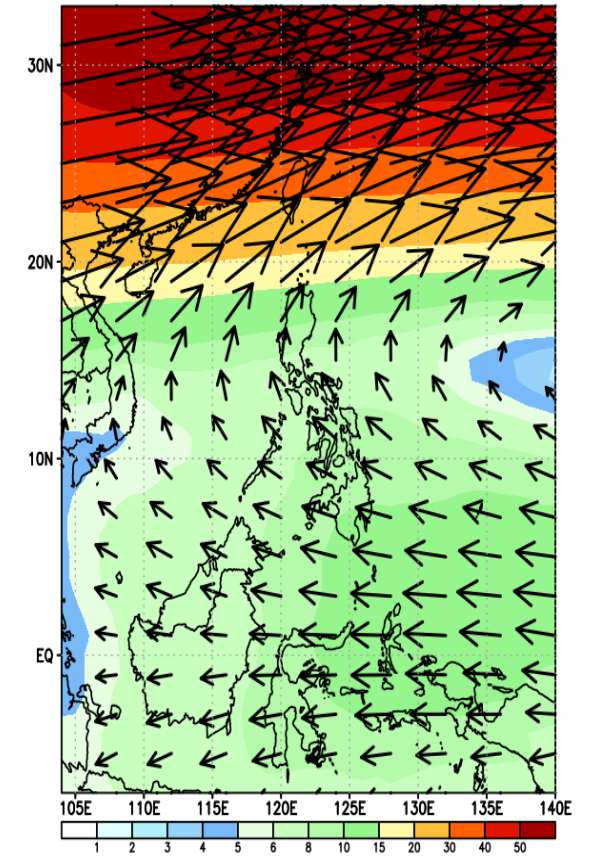
GEFS Week-2 850-hPa Wind Total
Valid: 20231213 - 20231219



GEFS Week-2 500-hPa Wind Total
Valid: 20231213 - 20231219

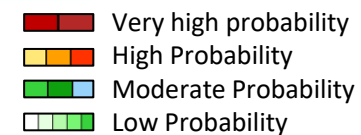


GEFS Week-2 200-hPa Wind Total
Valid: 20231213 - 20231219

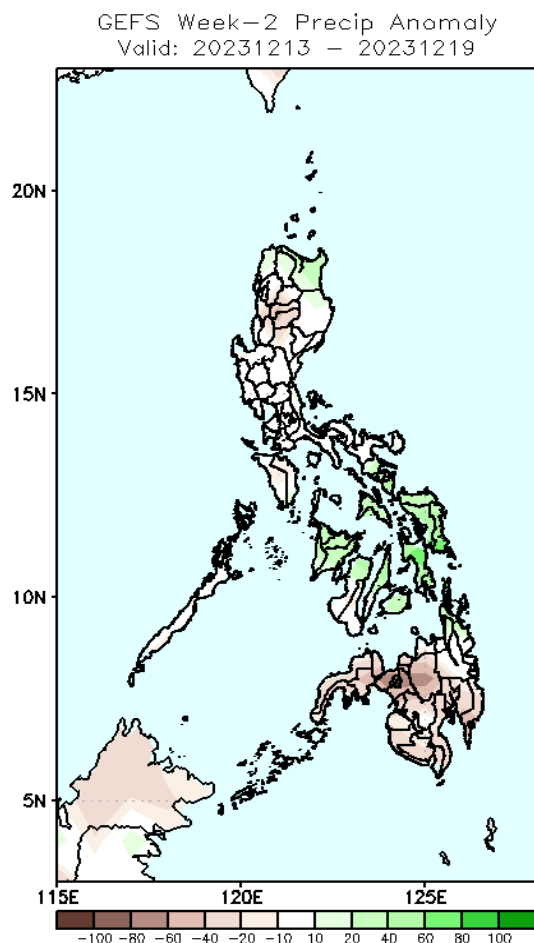


Easterlies affecting most parts of the country.

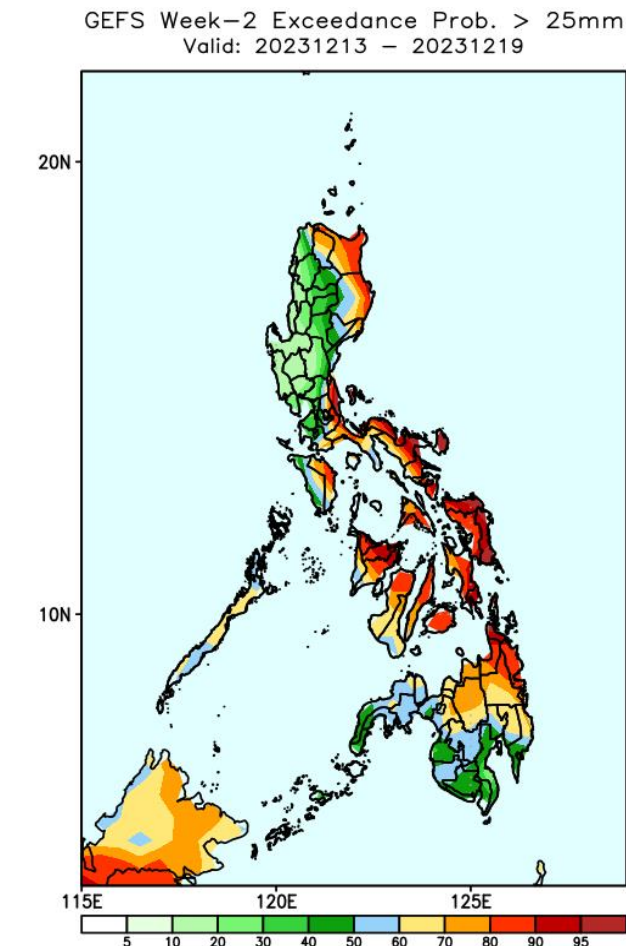
Precipitation Anomaly and Exceedance Probability > 25/50 mm



Week 2: Dec 13-19, 2023

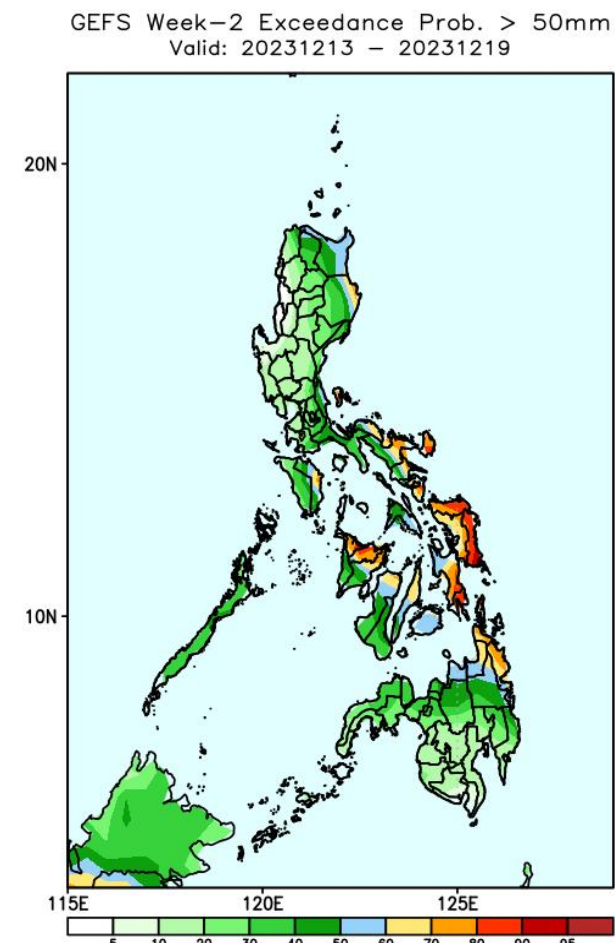


Rainfall deficit of 20-70mm is expected in most parts of the country except Ilocos Norte, Apayao, Cagayan, Sorsogon and most parts of Visayas where 40-80mm increase of rainfall is more likely.



Probability to Exceed 25mm

- High to very high over the Bicol Region, northern Luzon, Eastern Visayas, northern portions of Western and Central Visayas, and Surigao del Norte ;
- Moderate to high over eastern Luzon, Mindoro Provinces, Palawan, and rest of Visayas and Mindanao;
- Low to moderate over the rest of the country;

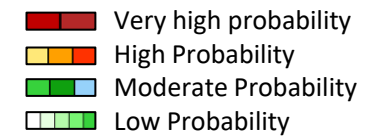


Probability to Exceed 50mm

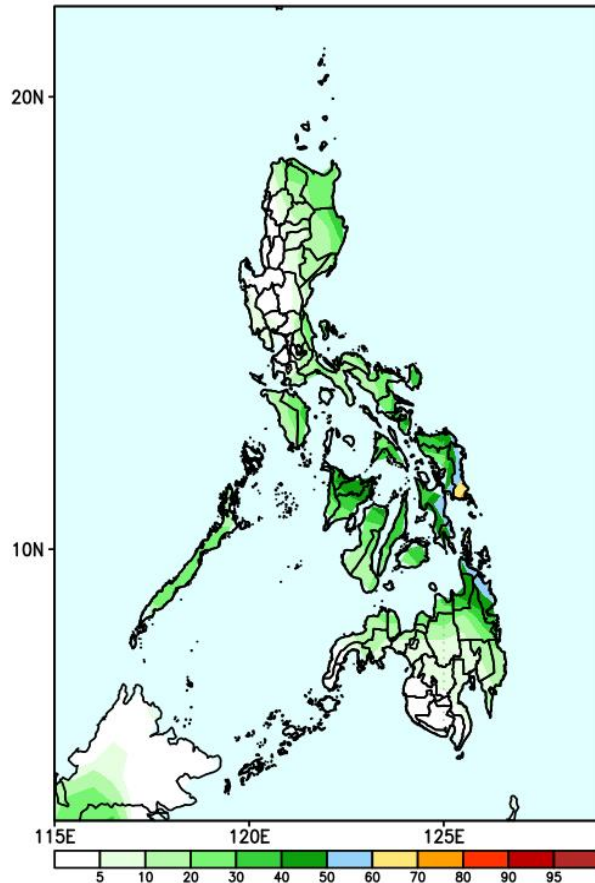
- Moderate to high over Isabela, Bicol Region, Oriental Mindoro, most parts of Visayas, and Caraga Region.
- Low to moderate over the rest of the country.

Exceedance Probability > 100/150/200 mm

Week 2: Dec 13-19, 2023



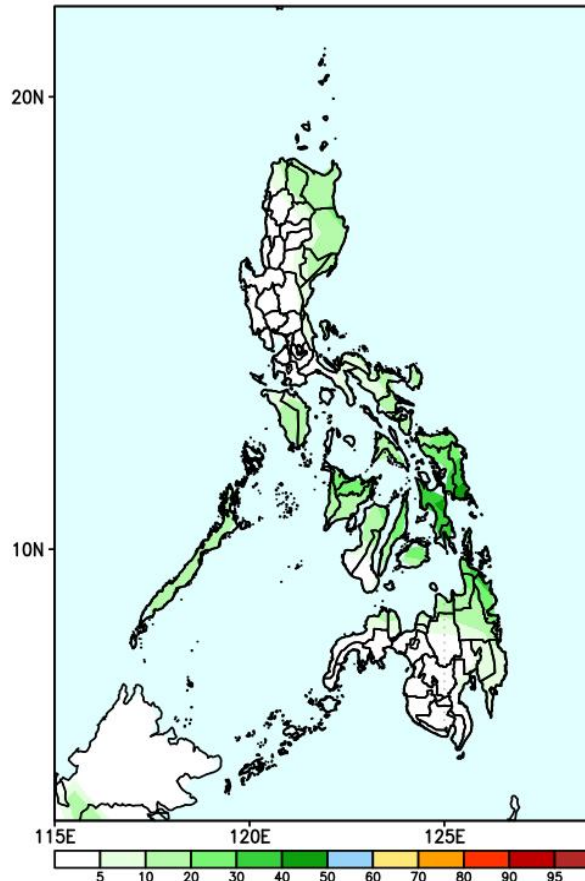
GEFS Week-2 Exceedance Prob. > 100mm
Valid: 20231213 - 20231219



Probability to Exceed 100mm

- Moderate to high over Eastern Samar.
- Low to moderate over most of Visayas and Caraga.
- Low elsewhere.

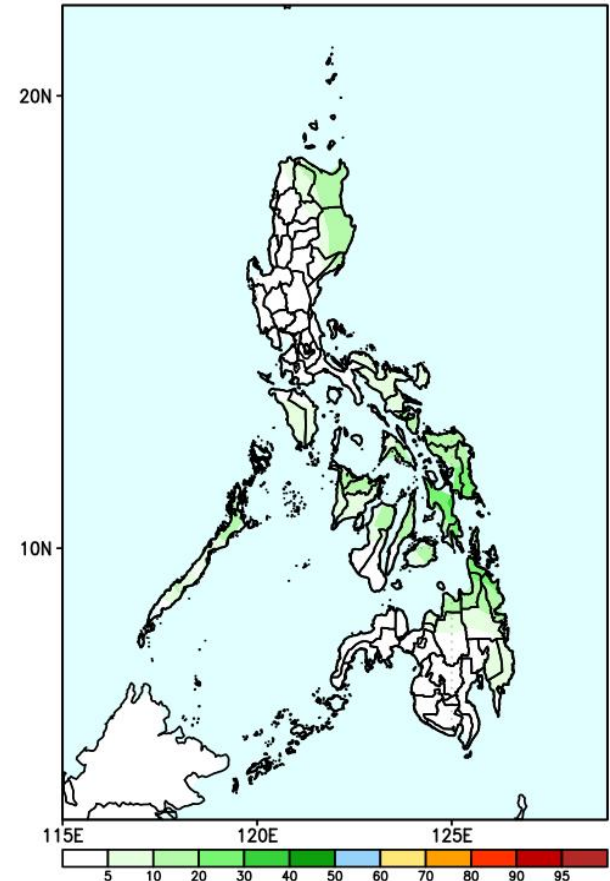
GEFS Week-2 Exceedance Prob. > 150mm
Valid: 20231213 - 20231219



Probability to Exceed 150mm

- Low in most parts of the country.

GEFS Week-2 Exceedance Prob. > 200mm
Valid: 20231213 - 20231219

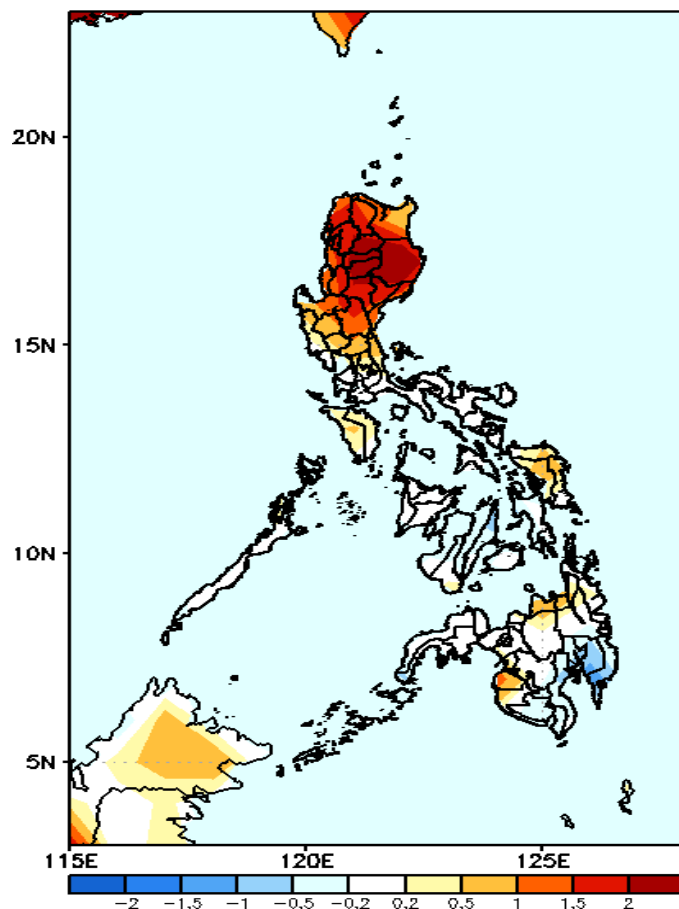


Probability to Exceed 200mm

- Low in most parts of the country.

GEFS Week-1 & 2 Forecasts: T2m Anomaly

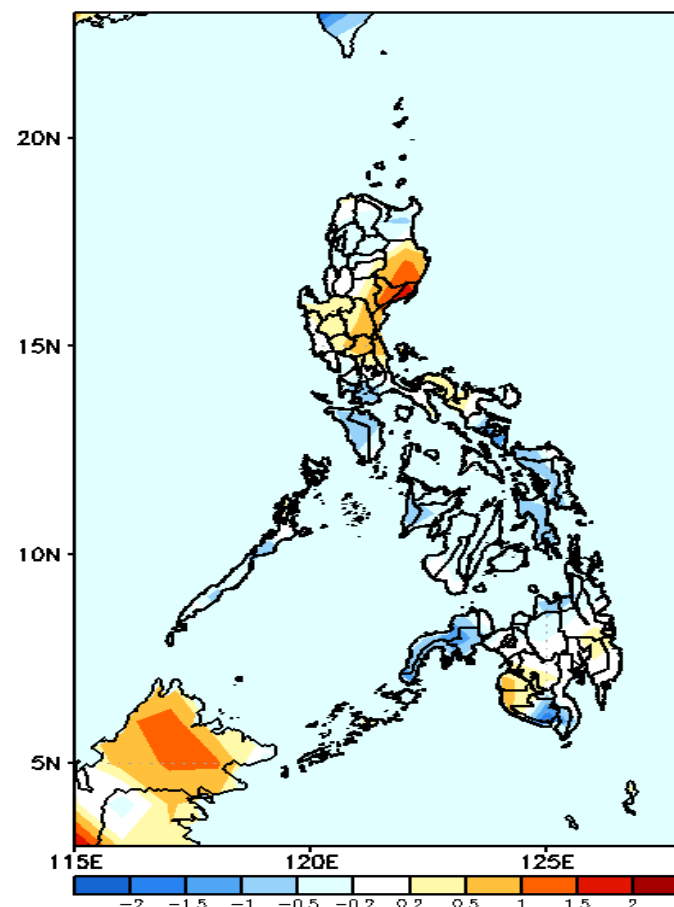
GEFS Week-1 T2m Anomaly
Valid: 20231206 – 20231212



2m Temperature Week 1: Dec 06-12, 2023

Near average to warmer than average surface air temperature will likely be experienced in most parts of the country except Davao Region where slightly cooler than average temperature is expected.

GEFS Week-2 T2m Anomaly
Valid: 20231213 – 20231219



2m Temperature Week 2: Dec 13-19, 2023

Near average to cooler than average surface air temperature will likely be experienced in most parts of the country except Isabela, Nueva Vizcaya, Quirino, most parts of Central Luzon, Camarines provinces, Maguindanao and Sultan Kudarat where slightly warmer to warmer than average surface air temperature is expected.