



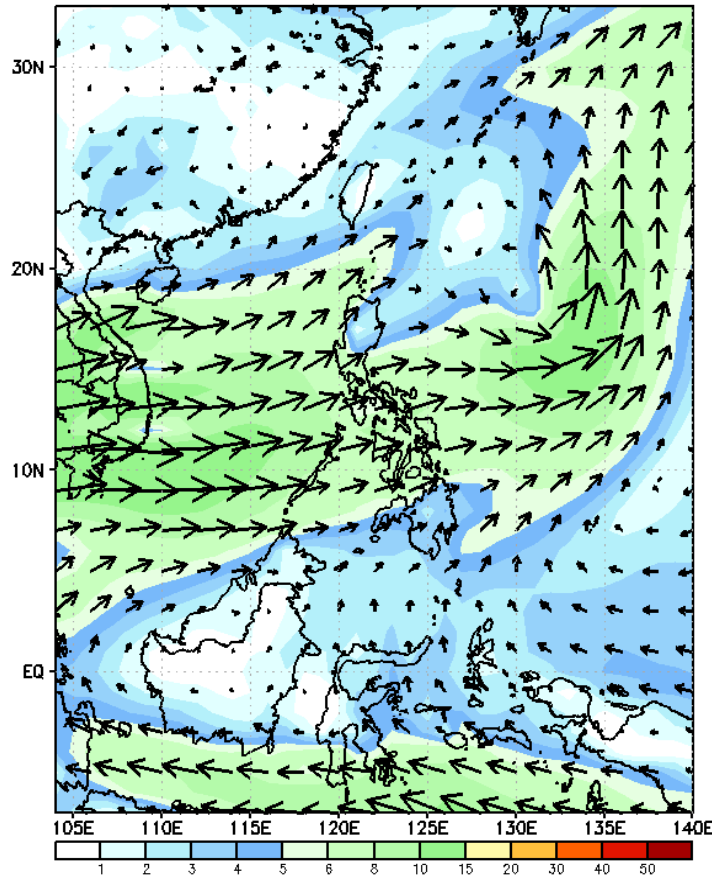
Week 1 & Week 2 Forecast for the Philippines using GEFS Model



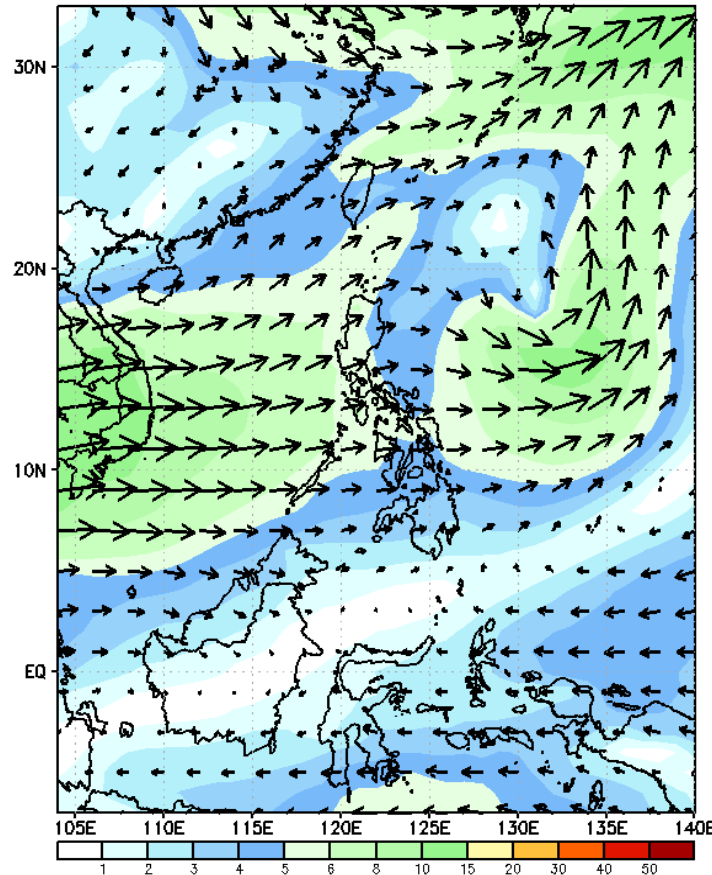
GEFS Week-1 Forecasts: Wind Forecast

Week 1: June 07 - 13, 2023

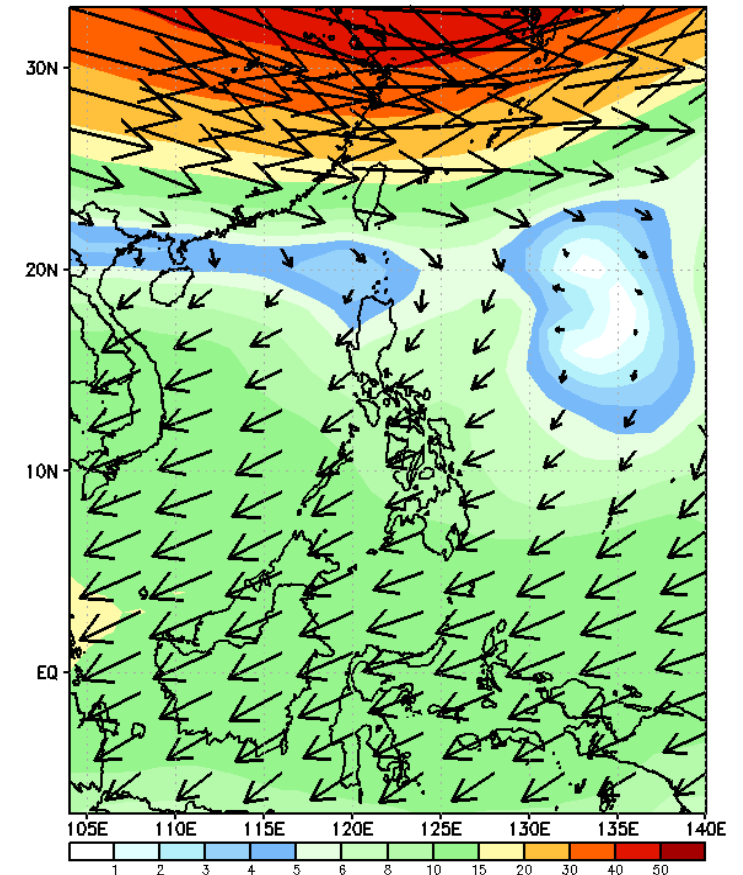
GEFS Week-1 850-hPa Wind Total
Valid: 20230607 - 20230613



GEFS Week-1 700-hPa Wind Total
Valid: 20230607 - 20230613



GEFS Week-1 200-hPa Wind Total
Valid: 20230607 - 20230613



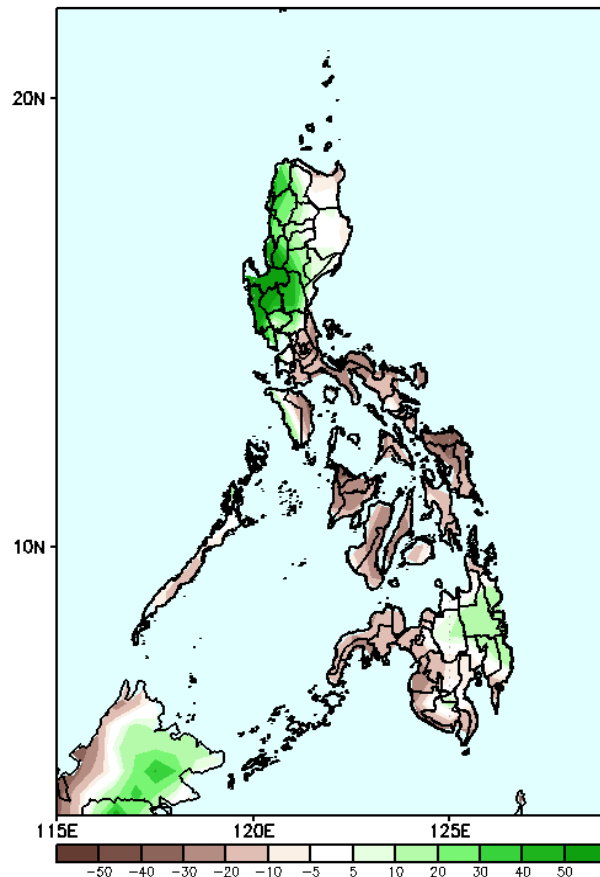
Southwest Monsoon is forecasted to prevail in most parts of the country.

Precipitation Anomaly and Exceedance Probability > 25/50 mm



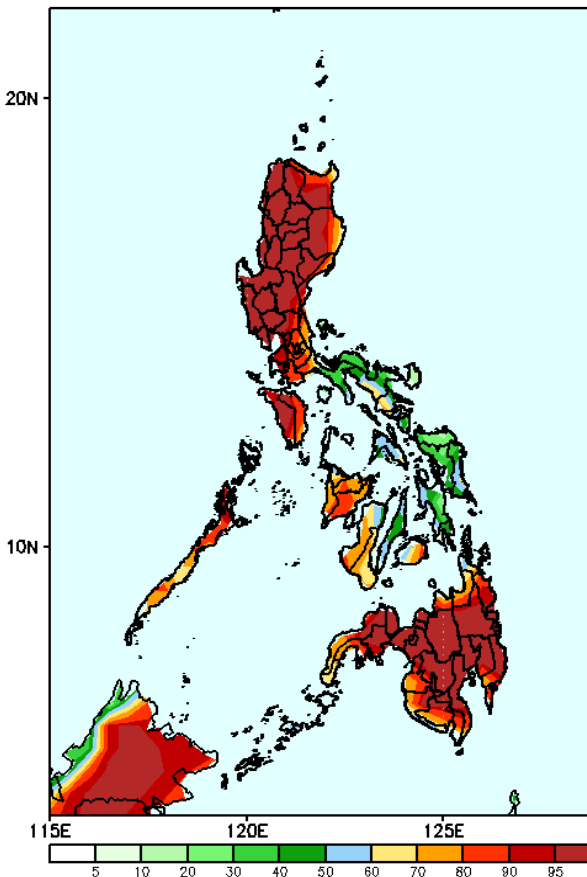
Week 1: June 07 - 13, 2023

GEFS Week-1 Precip Anomaly
Valid: 20230607 - 20230613



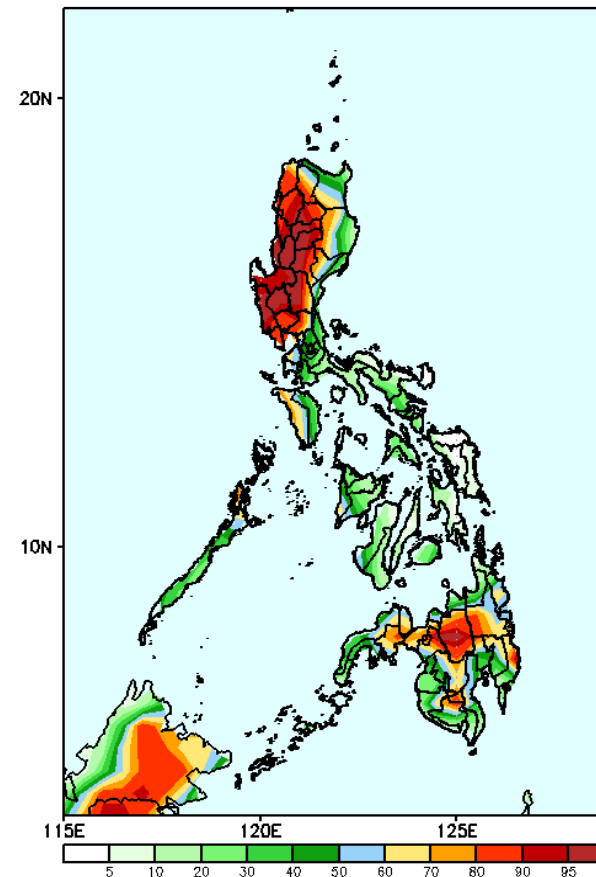
Rainfall deficit of up to 50mm is expected in most parts of the country while more than 50mm increase of rainfall is expected Northern and Central Luzon, Mindoro Occidental, Bukidnon and most of Eastern Mindanao.

GEFS Week-1 Exceedance Prob. > 25mm
Valid: 20230607 - 20230613



High to a very high probability to exceed 25mm of rainfall in most parts of the country except for a moderate to high probability over the Bicol region, Southern Quezon, and Eastern and Central Visayas.

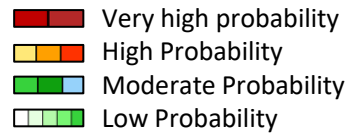
GEFS Week-1 Exceedance Prob. > 50mm
Valid: 20230607 - 20230613



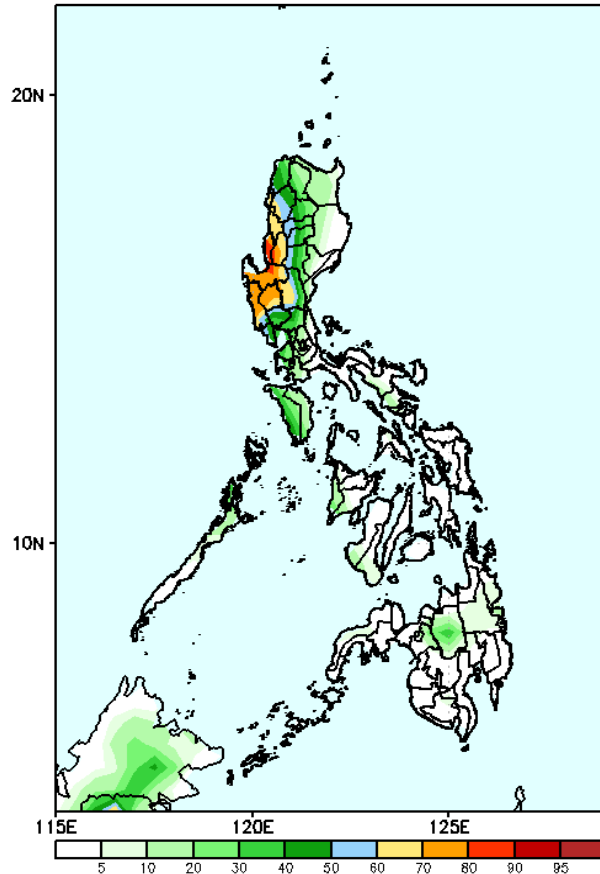
High to a very high probability to exceed 50mm of rainfall in most parts of Central and Northern Luzon and Bukidnon; moderate to high likelihood over the western sections of Southern Luzon and Visayas and the rest of Mindanao while low likelihood over the rest of Luzon and Visayas.

Exceedance Probability > 100/150/200 mm

Week 1: June 07 - 13, 2023

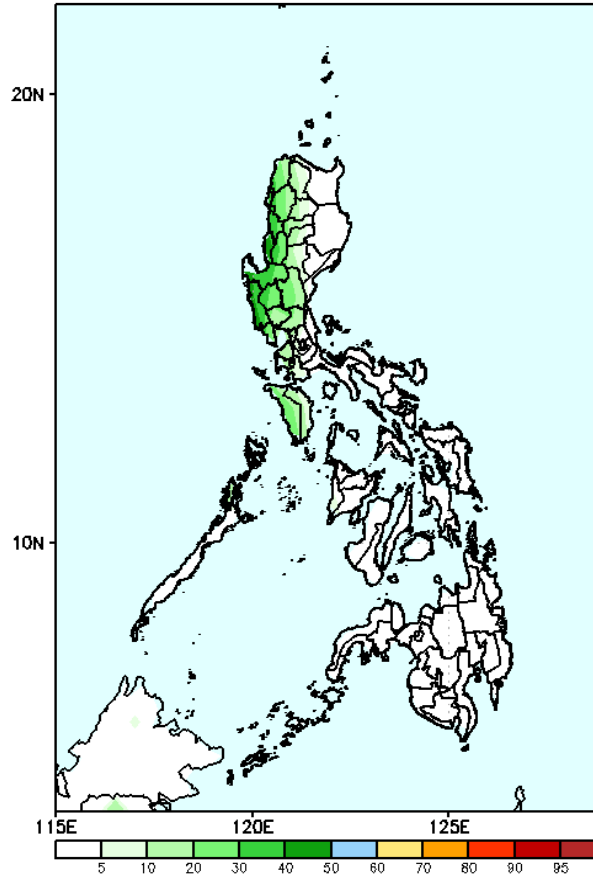


GEFS Week-1 Exceedance Prob. > 100mm
Valid: 20230607 - 20230613



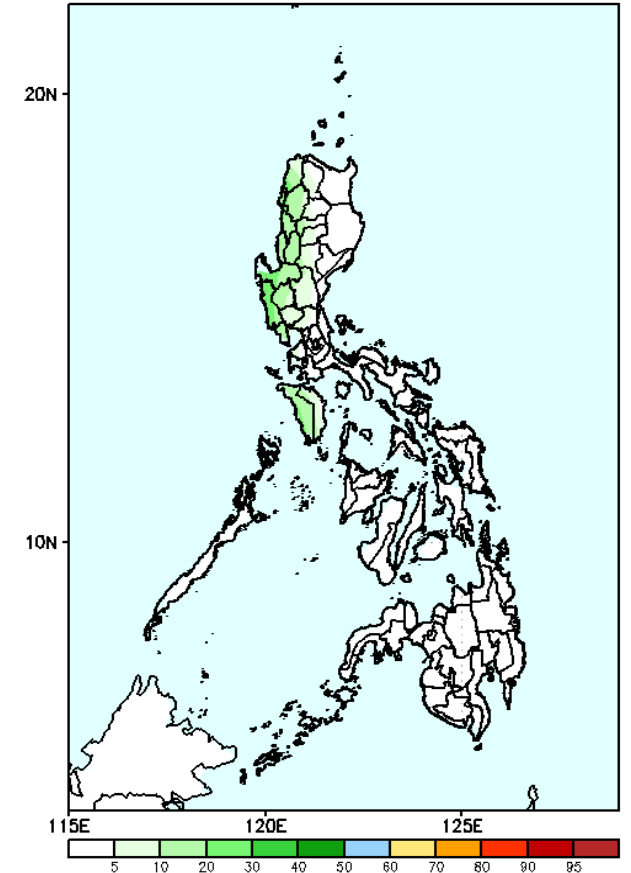
Moderate to high probability to exceed 100mm of rainfall over the western sections of Central and Northern Luzon while low likelihood over the rest of the country.

GEFS Week-1 Exceedance Prob. > 150mm
Valid: 20230607 - 20230613



Low probability to exceed 150mm of rainfall over the rest of the country.

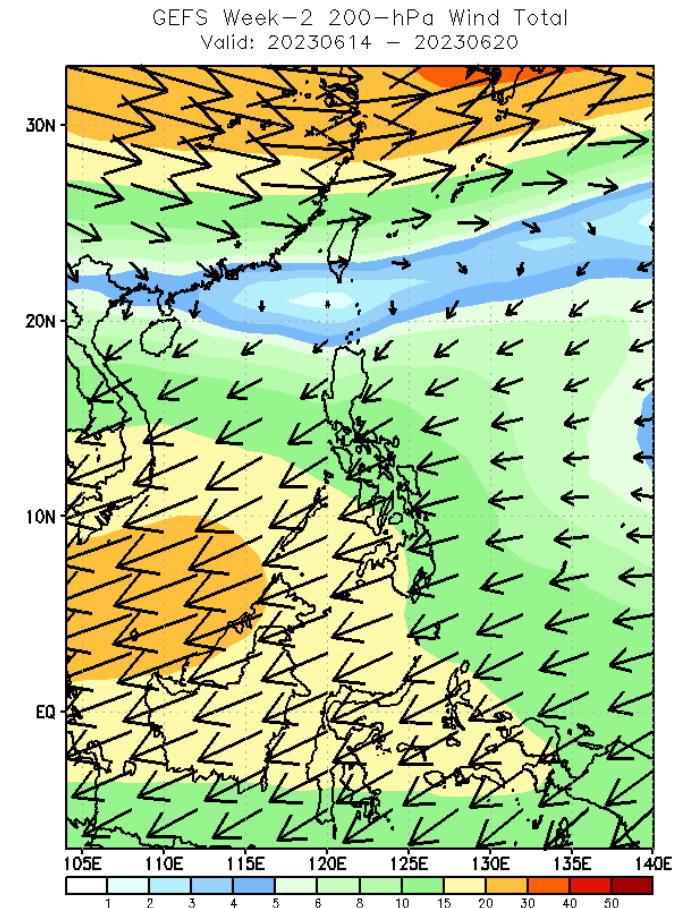
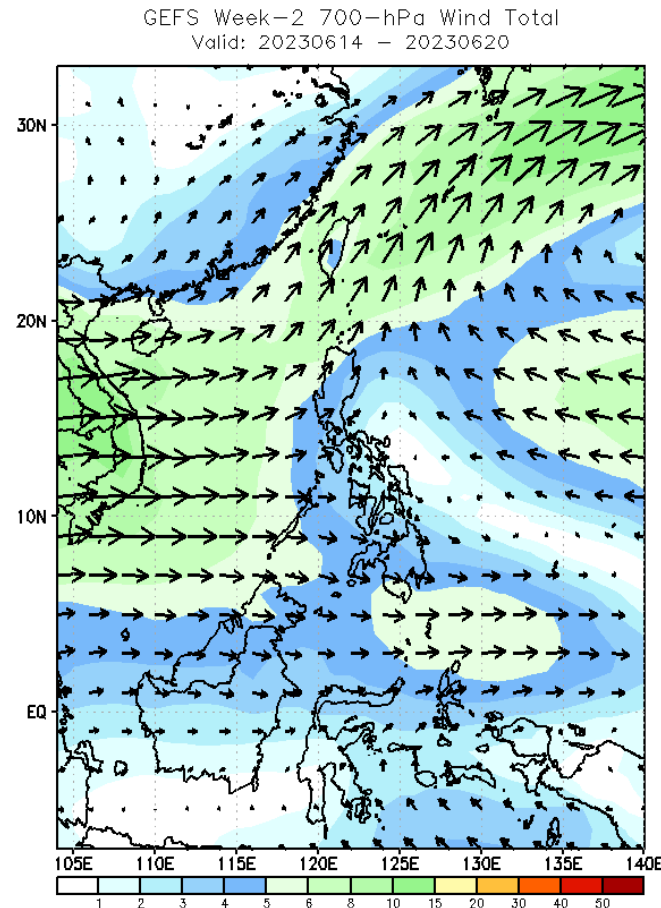
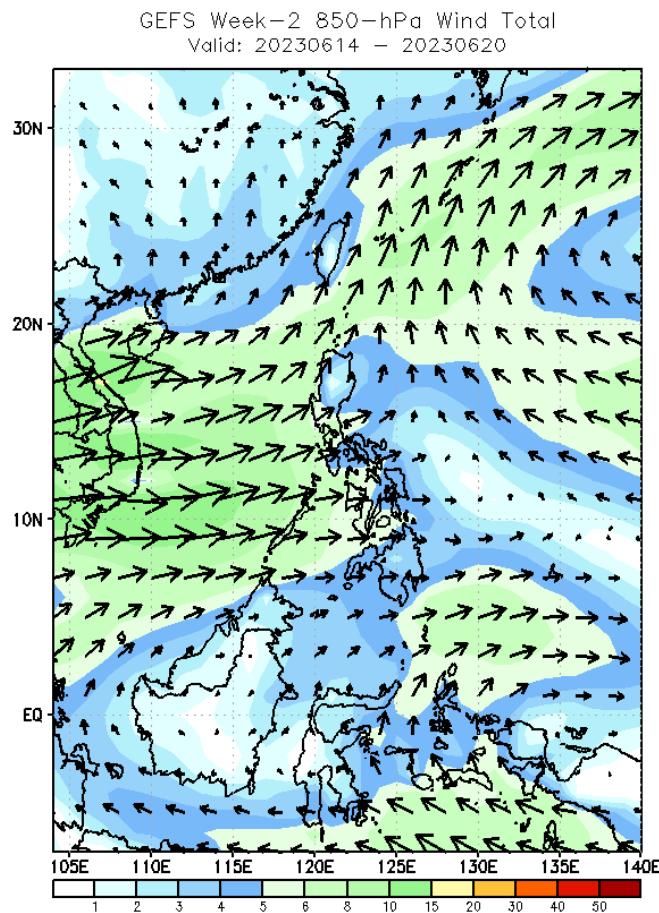
GEFS Week-1 Exceedance Prob. > 200mm
Valid: 20230607 - 20230613



Low probability to exceed 200mm of rainfall over the rest of the country.

GEFS Week-2 Forecasts: Wind Forecast

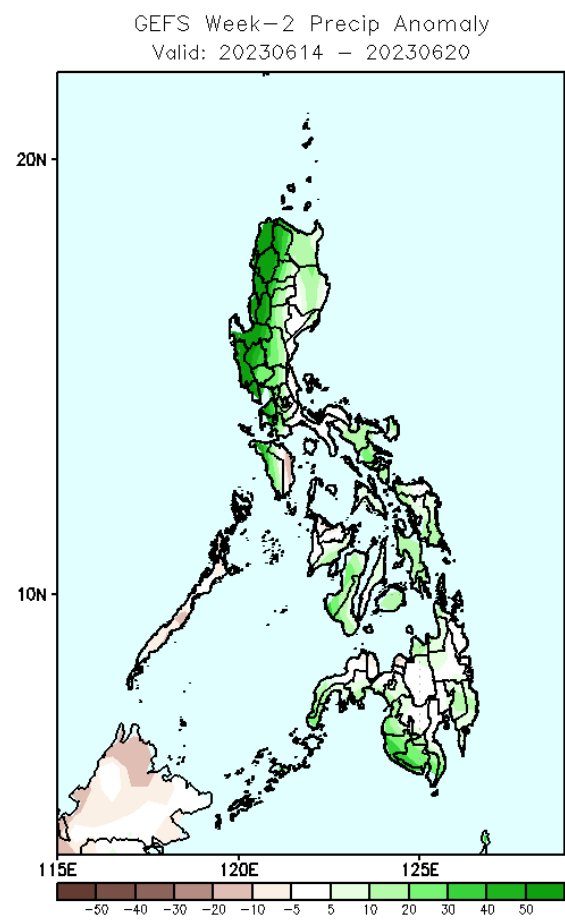
Week 2: June 14 - 20, 2023



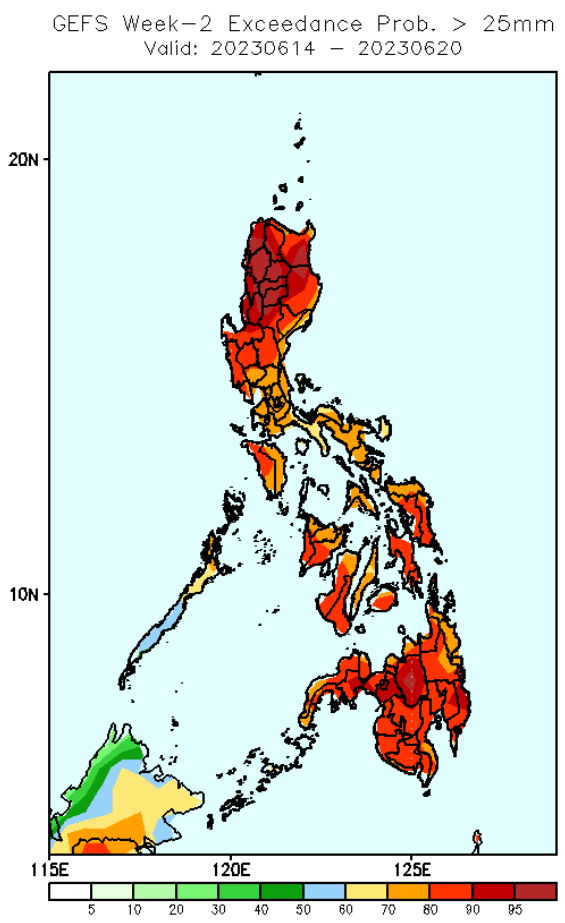
Southwest Monsoon is forecasted to prevail in most parts of the country.

Week 2: June 14 - 20, 2023

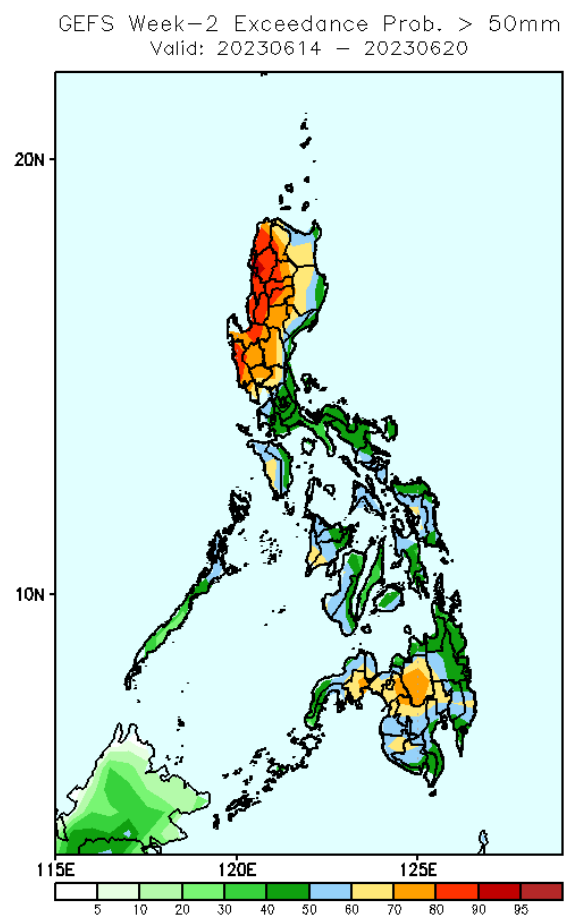
- Very high probability
- High Probability
- Moderate Probability
- Low Probability



Rainfall increase of 40-80mm is expected in most parts of the country except in Mindoro Oriental and Palawan where a deficit of up to 20mm is likely.



High to a very high probability to exceed 25mm of rainfall in most parts of the country.



High to a very high probability to exceed 50mm of rainfall in the western sections of Central and Northern Luzon while moderate to high likelihood over the rest of the country.

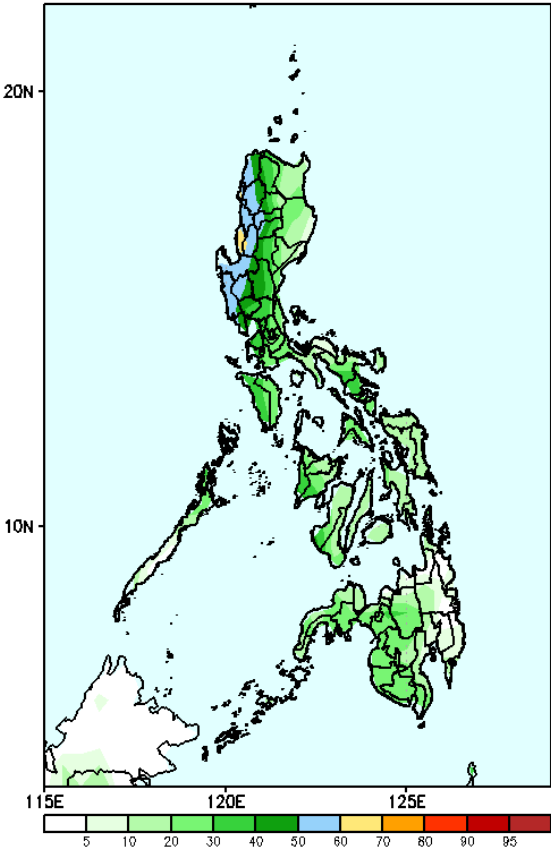


Exceedance Probability > 100/150/200 mm

Week 2: June 14 - 20, 2023

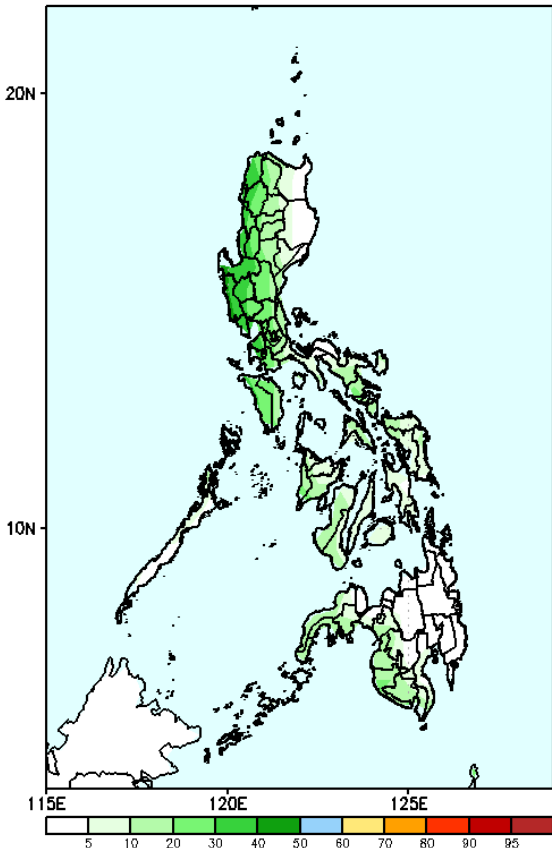
- Very high probability
- High Probability
- Moderate Probability
- Low Probability

GEFS Week-2 Exceedance Prob. > 100mm
Valid: 20230614 - 20230620



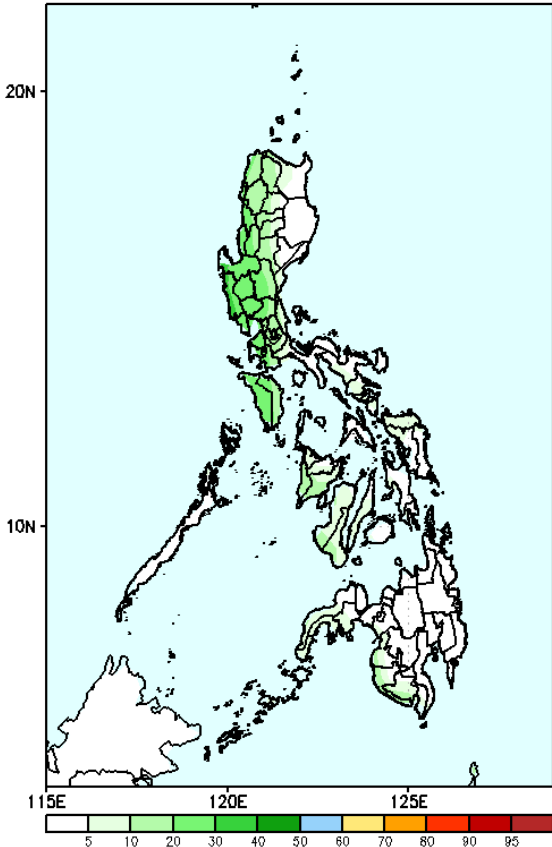
Moderate probability to exceed 100mm of rainfall over the western section of Central and Northern Luzon while low likelihood for the rest of the country.

GEFS Week-2 Exceedance Prob. > 150mm
Valid: 20230614 - 20230620



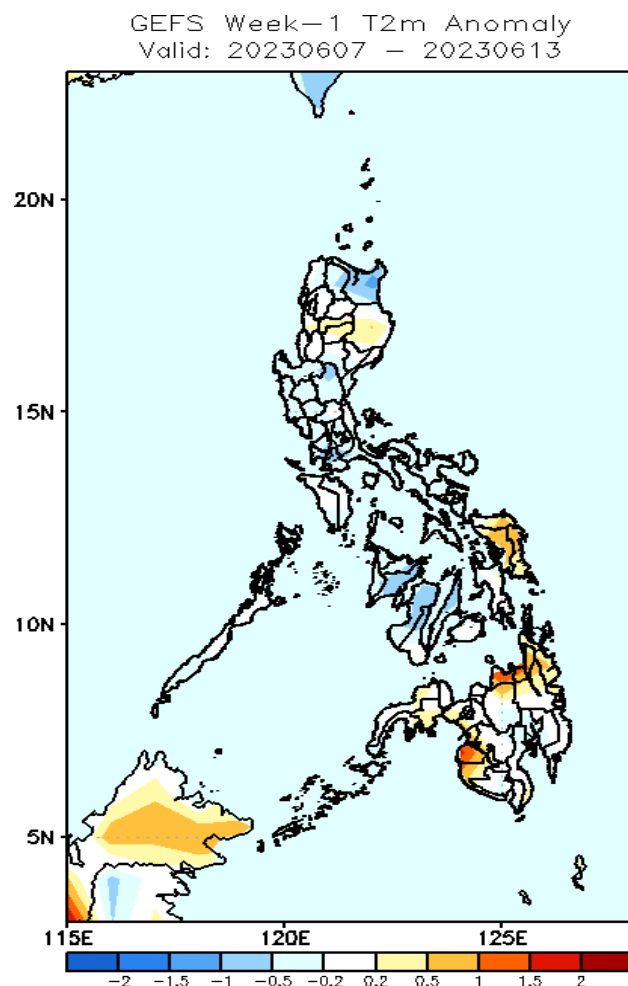
Low probability to exceed 150mm of rainfall over the rest of the country.

GEFS Week-2 Exceedance Prob. > 200mm
Valid: 20230614 - 20230620



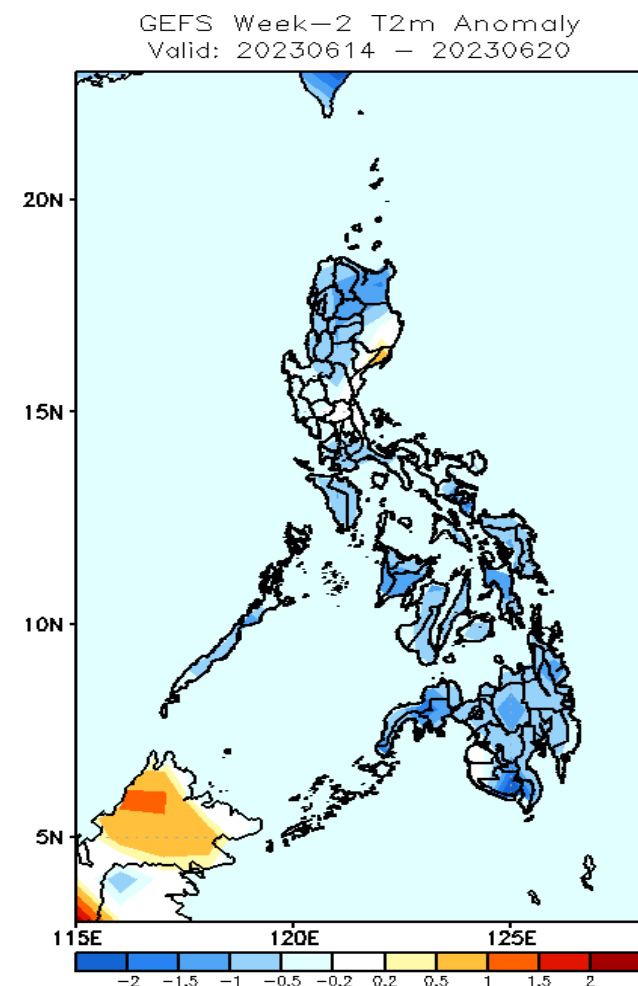
Low probability to exceed 200mm of rainfall over the rest of the country.

GEFS Week-1 & 2 Forecasts: T2m Anomaly



2m Temperature Week 1: June 07 - 13, 2023

Average to slightly cooler than surface air temperature will likely experience in most parts of Luzon and Visayas while slightly warmer to warmer than average temperature is forecasted in Isabela, Samar provinces and most parts of Mindanao.



2m Temperature Week 2: June 14 - 20, 2023

Average to cooler than average surface air temperature will likely experience in most parts of the country.

