



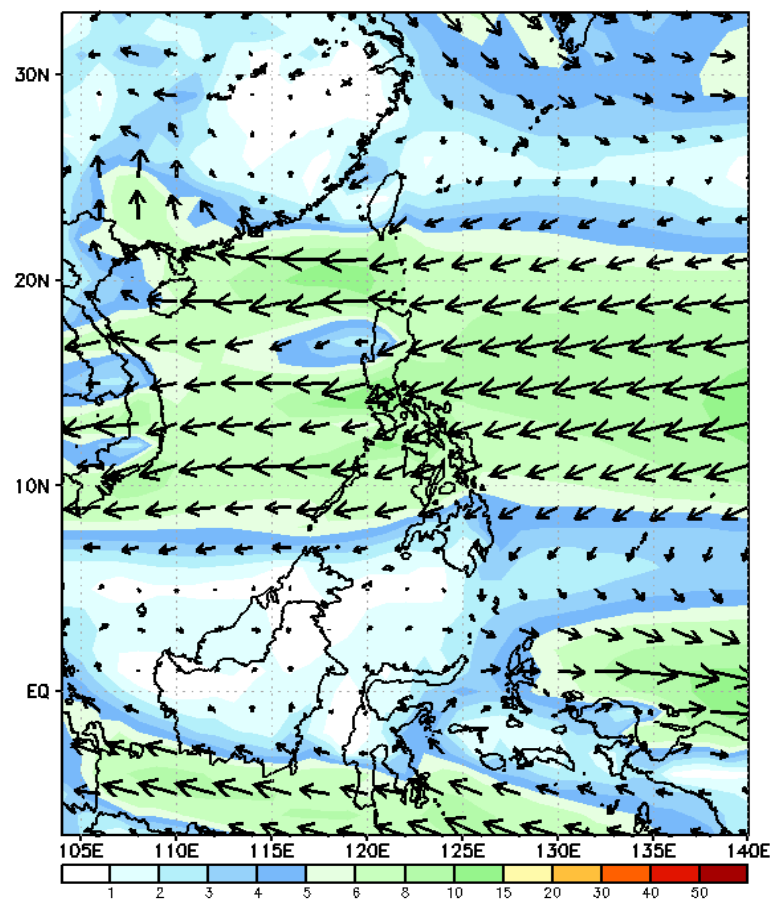
Week 1 & Week 2 Forecast for the Philippines using GEFS Model



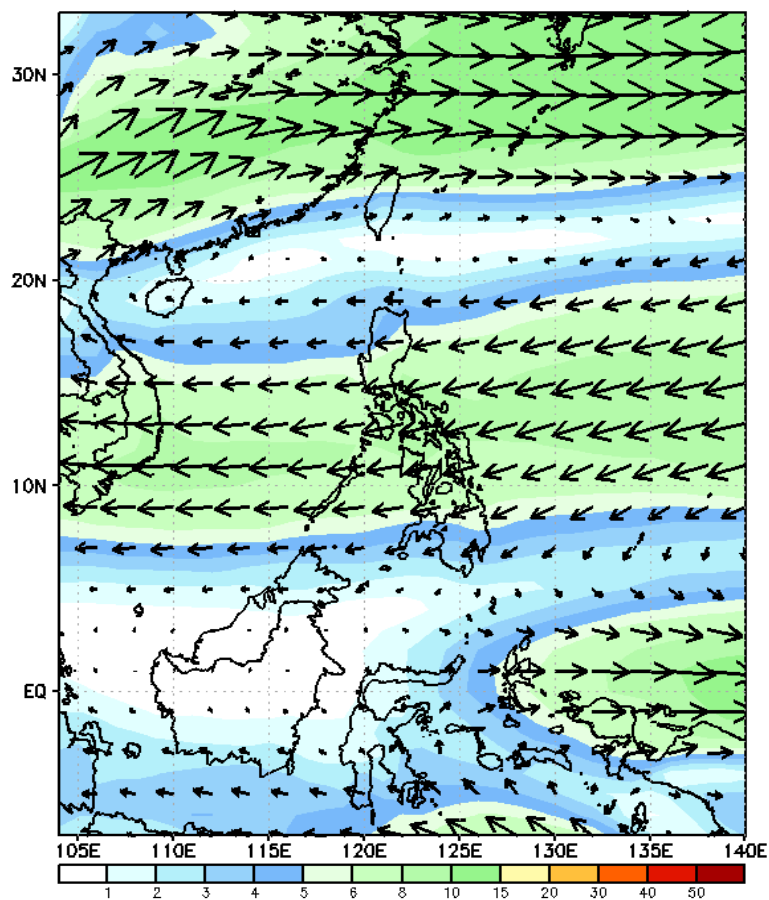
GEFS Week-1 Forecasts: Wind Forecast

Week 1: Nov 08 -14, 2023

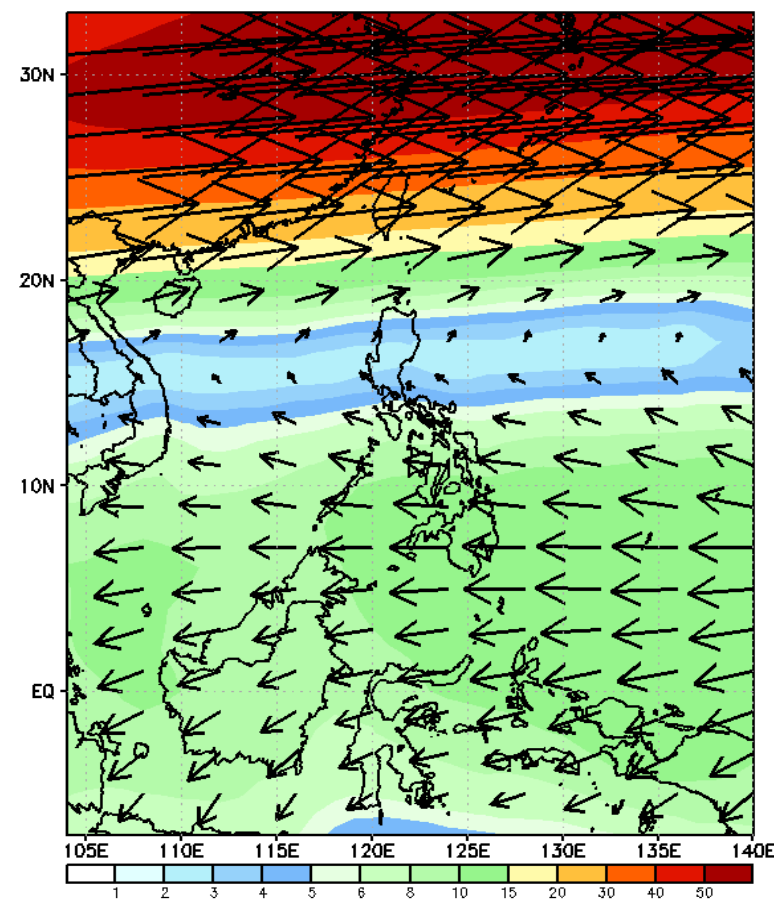
GEFS Week-1 850-hPa Wind Total
Valid: 20231108 - 20231114



GEFS Week-1 700-hPa Wind Total
Valid: 20231108 - 20231114

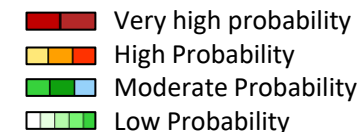


GEFS Week-1 200-hPa Wind Total
Valid: 20231108 - 20231114



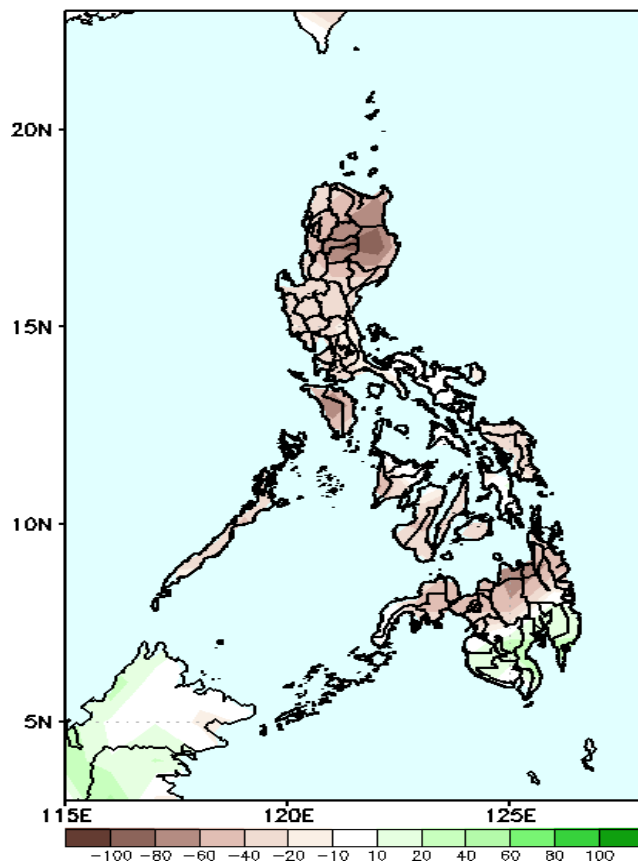
Easterlies affecting most parts of the country.

Precipitation Anomaly and Exceedance Probability > 25/50 mm



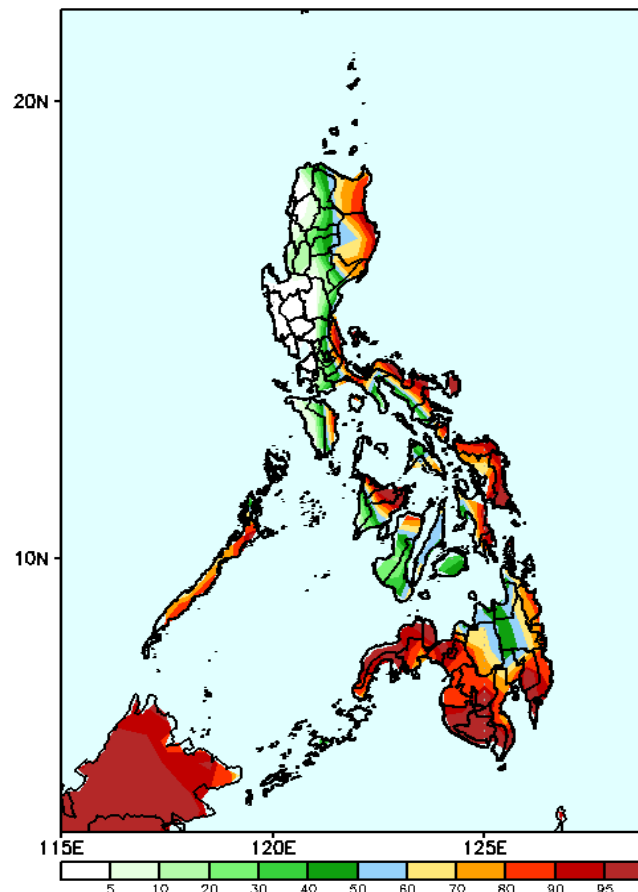
Week 1: Nov 08 -14, 2023

GEFS Week-1 Precip Anomaly
Valid: 20231108 - 20231114



Rainfall deficit of 40-100mm is expected in most parts of the country except in southern Mindanao where 10-20mm increase of rainfall is more likely.

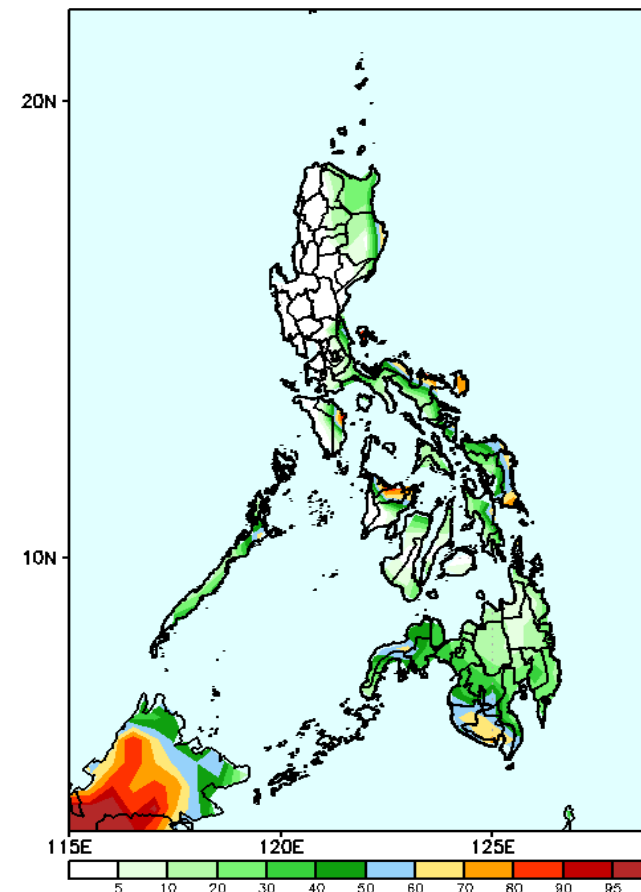
GEFS Week-1 Exceedance Prob. > 25mm
Valid: 20231108 - 20231114



Probability to Exceed 25mm

- High to very high over Samar provinces and most parts of Mindanao;
- Moderate to high in most parts of Eastern Luzon, Bicol region, Oriental Mindoro, Palawan and most parts of Visayas;
- Low over the rest of Luzon.

GEFS Week-1 Exceedance Prob. > 50mm
Valid: 20231108 - 20231114



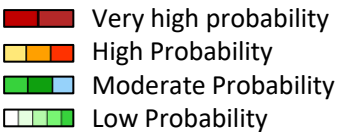
Probability to Exceed 50mm

- Moderate to high over some parts of Bicol region, Samar provinces, Western Mindanao and Zamboanga peninsula;
- Low to moderate over the rest of the country.

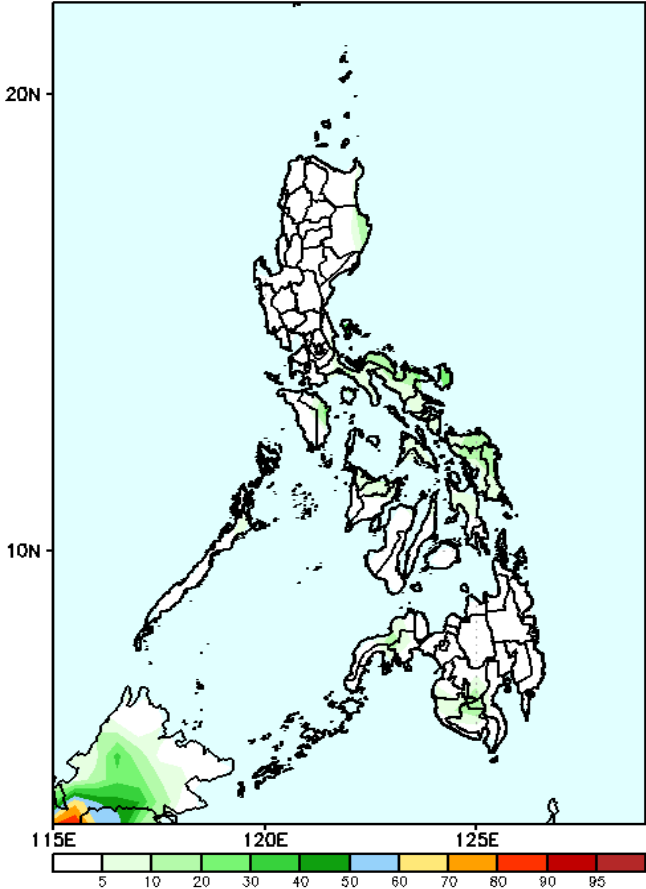


Exceedance Probability > 100/150/200 mm

Week 1: Nov 08 -14, 2023

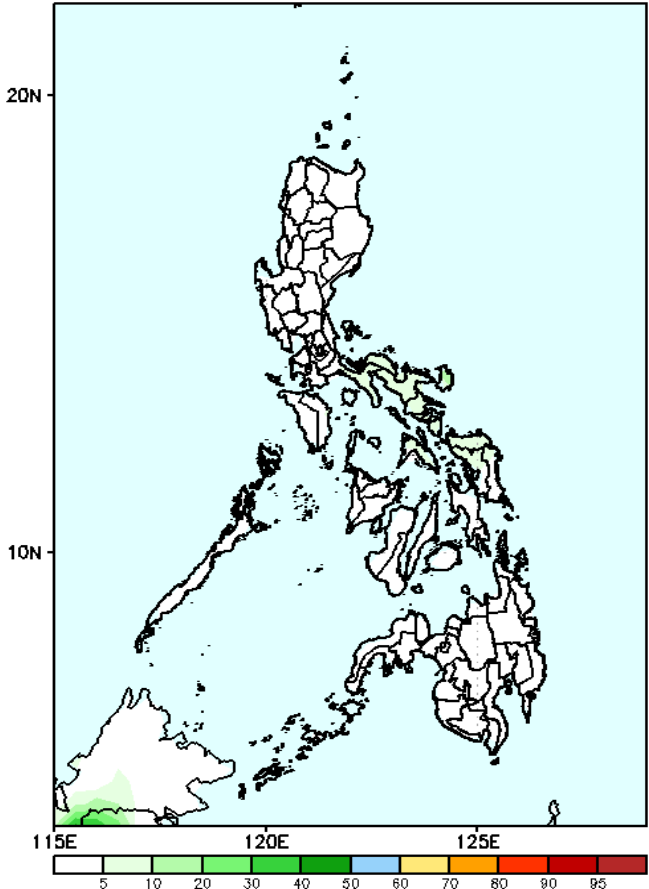


GEFS Week-1 Exceedance Prob. > 100mm
Valid: 20231108 - 20231114



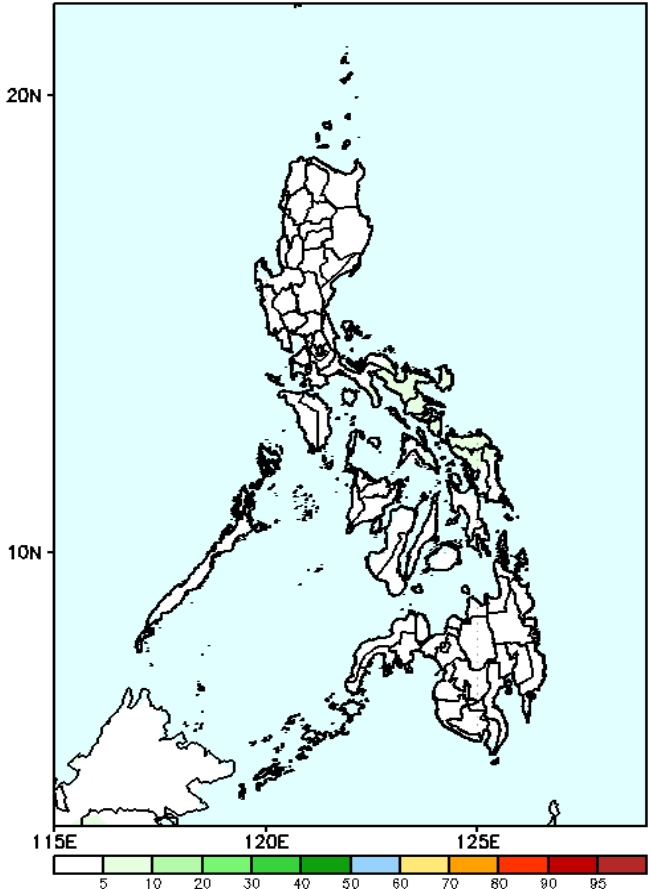
Probability to Exceed 100mm
• Low in most parts of the country.

GEFS Week-1 Exceedance Prob. > 150mm
Valid: 20231108 - 20231114



Probability to Exceed 150mm
• Low in most parts of the country.

GEFS Week-1 Exceedance Prob. > 200mm
Valid: 20231108 - 20231114

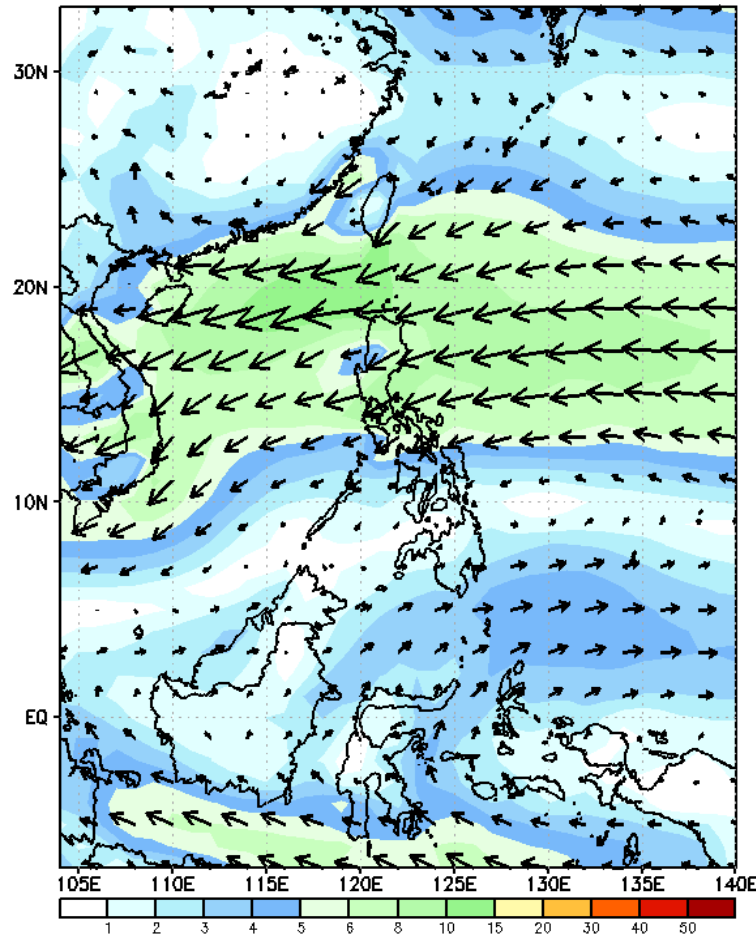


Probability to Exceed 200mm
• Low in most parts of the country.

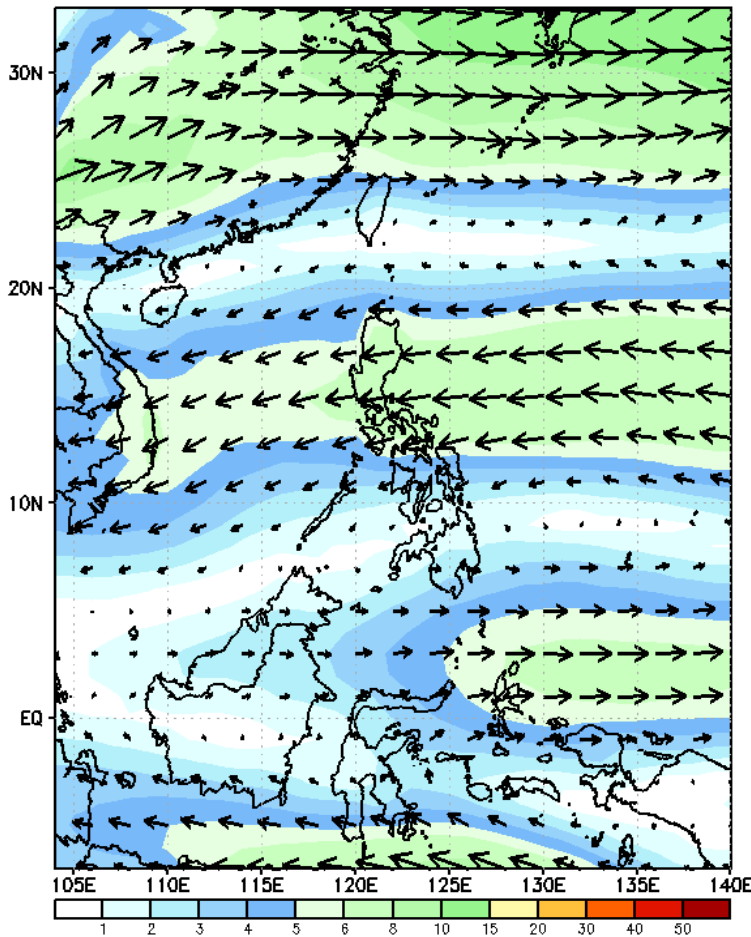
GEFS Week-2 Forecasts: Wind Forecast

Week 2: Nov 15 - 21, 2023

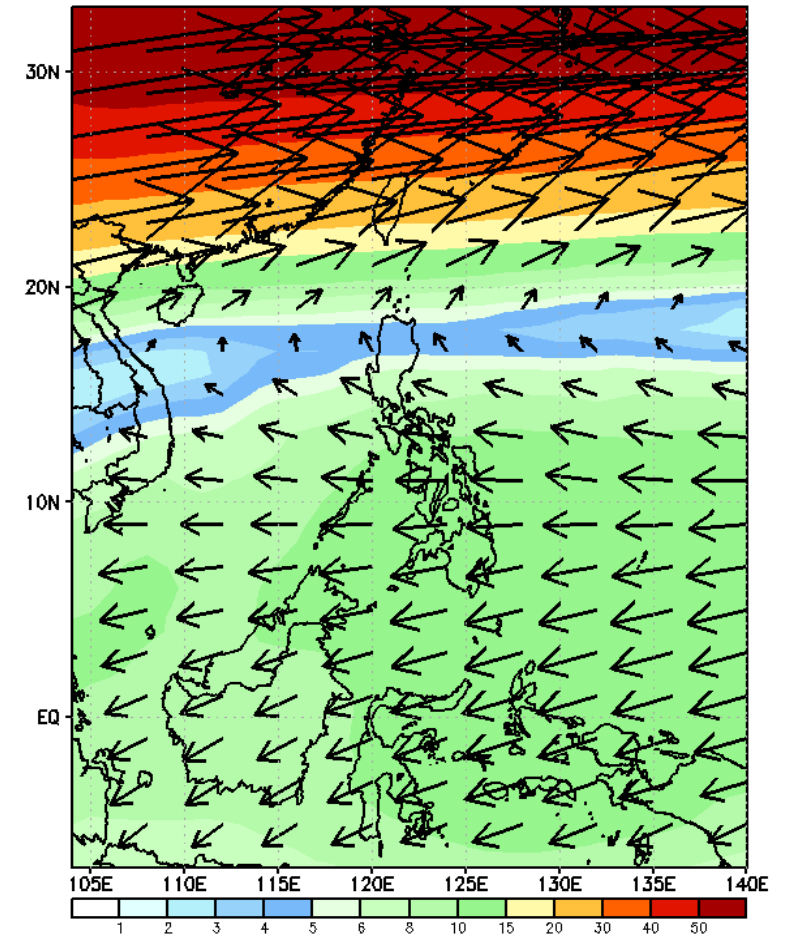
GEFS Week-2 850-hPa Wind Total
Valid: 20231115 - 20231121



GEFS Week-2 700-hPa Wind Total
Valid: 20231115 - 20231121

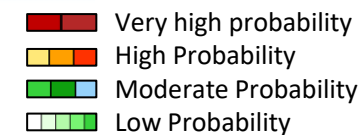


GEFS Week-2 200-hPa Wind Total
Valid: 20231115 - 20231121



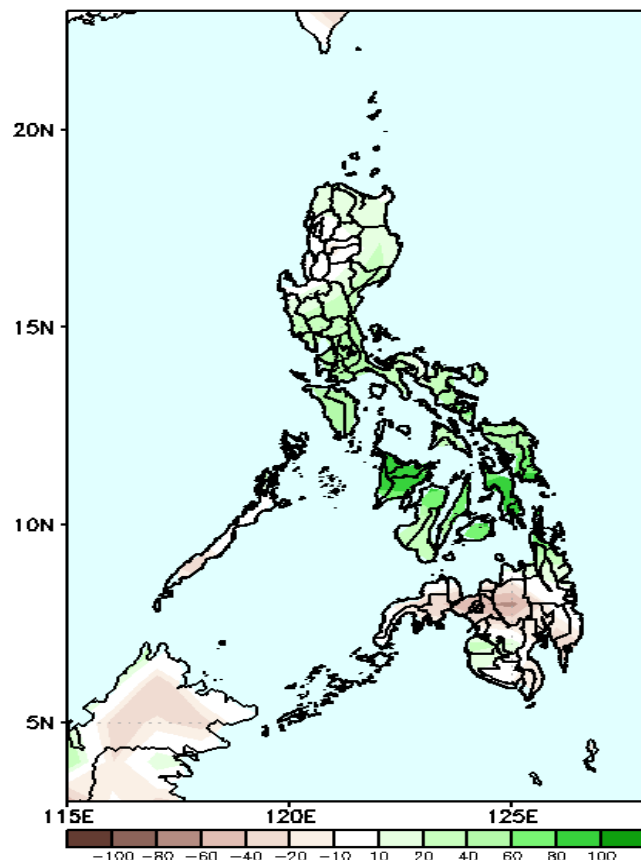
Northeast Monsoon affecting Extreme Northern Luzon. Easterlies the rest of the country.

Precipitation Anomaly and Exceedance Probability > 25/50 mm



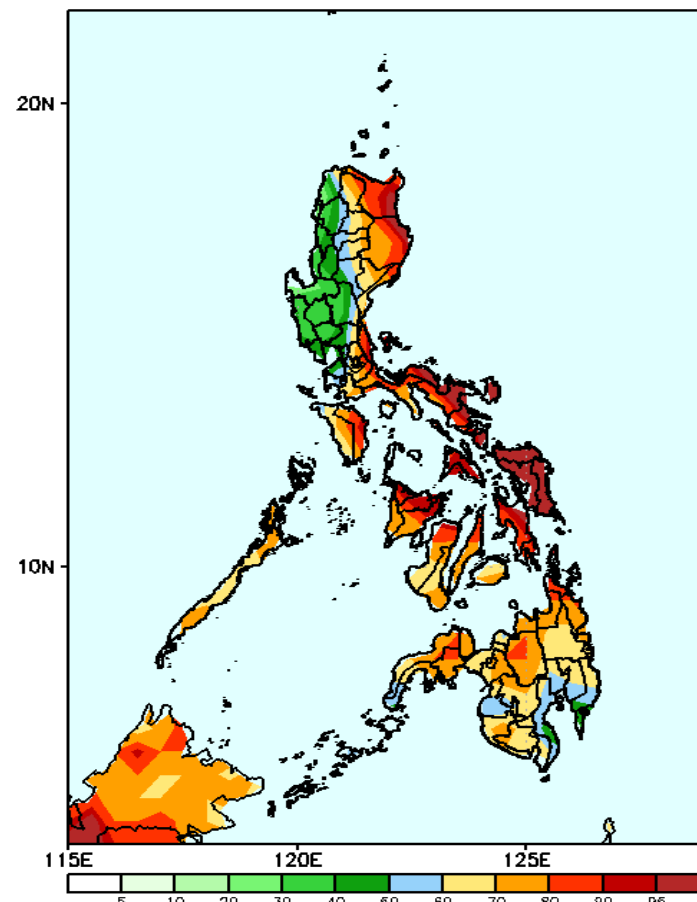
Week 2: Nov 15 - 21, 2023

GEFS Week-2 Precip. Anomaly
Valid: 20231115 - 20231121



Increase of rainfall of 30 – 100mm in most parts of Luzon and Visayas, while 10-30mm rainfall deficit of rainfall in Mindanao.

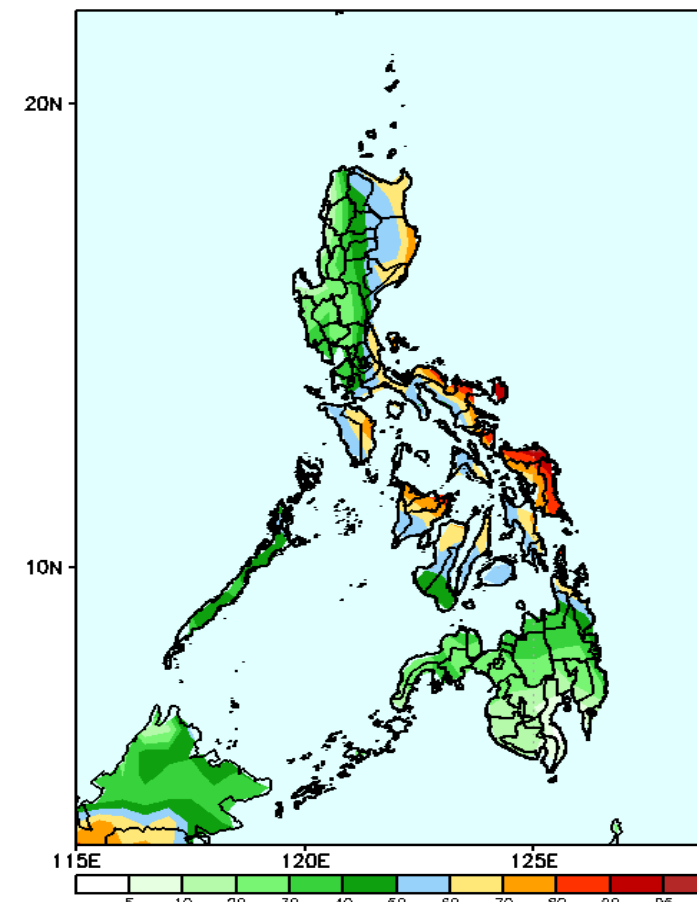
GEFS Week-2 Exceedance Prob. > 25mm
Valid: 20231115 - 20231121



Probability to Exceed 25mm

- High to very high over most parts of Eastern Luzon, Bicol region and Eastern Visayas;
- Moderate to high over the rest of the country.

GEFS Week-2 Exceedance Prob. > 50mm
Valid: 20231115 - 20231121

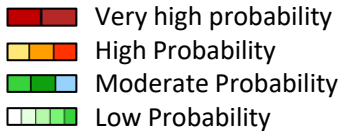


Probability to Exceed 50mm

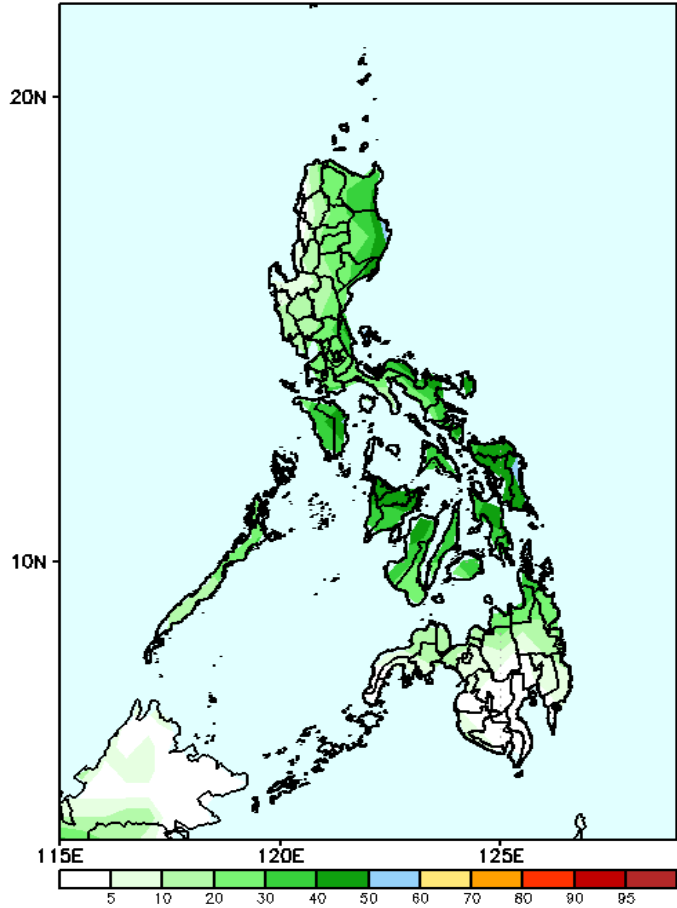
- Moderate to high in some areas of Eastern Luzon, most of Bicol region, Oriental Mindoro and most parts of Visayas.
- Low to moderate over the rest of the country.

Exceedance Probability > 100/150/200 mm

Week 2: Nov 15 - 21, 2023



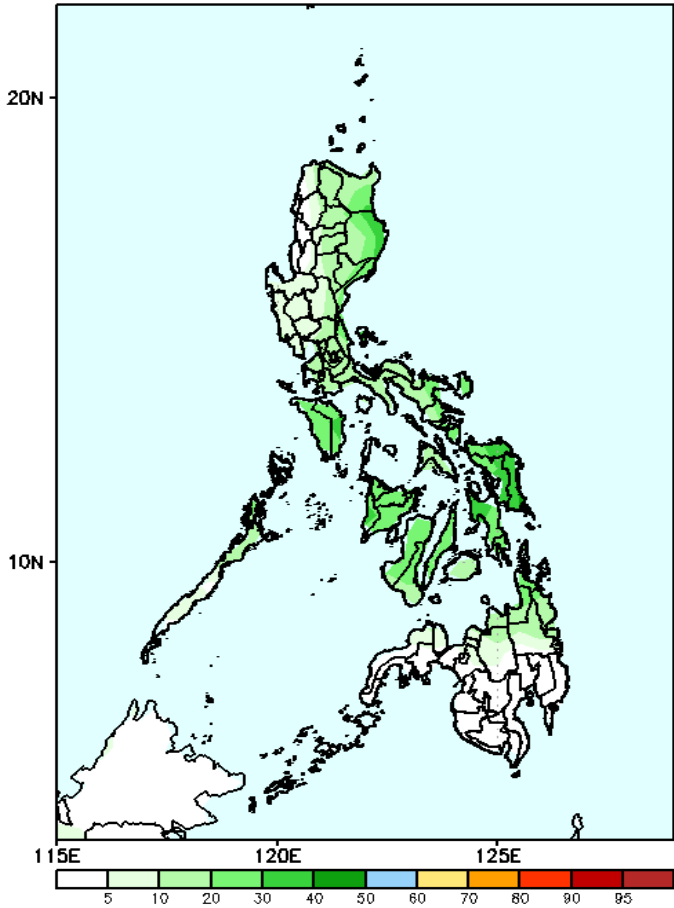
GEFS Week-2 Exceedance Prob. > 100mm
Valid: 20231115 - 20231121



Probability to Exceed 100mm

- Moderate to high over Bicol Region.
- Low to moderate elsewhere.

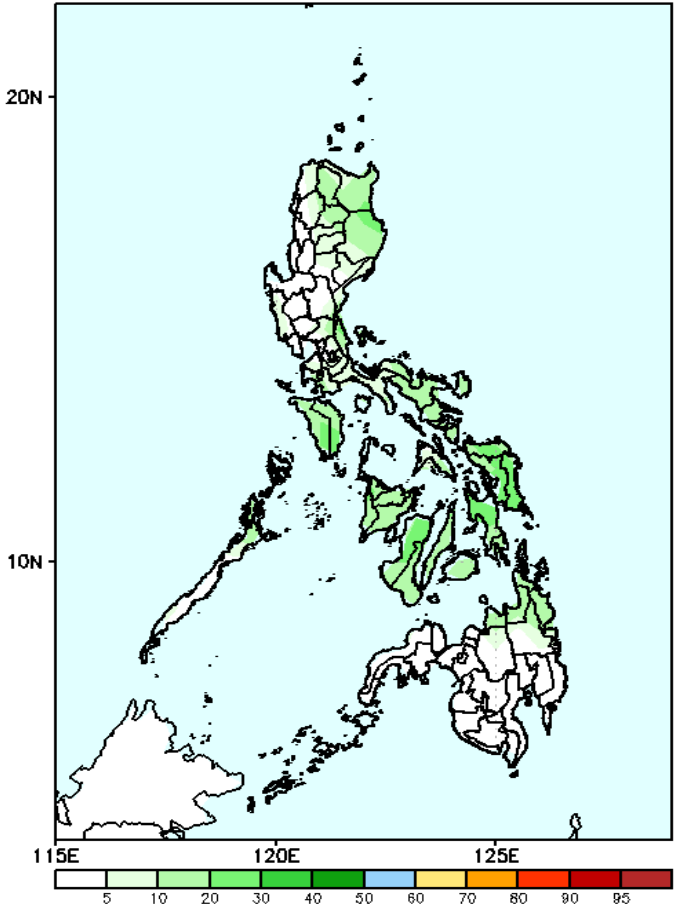
GEFS Week-2 Exceedance Prob. > 150mm
Valid: 20231115 - 20231121



Probability to Exceed 150mm

- Low to moderate over Bicol region and Eastern Visayas.
- Low elsewhere.

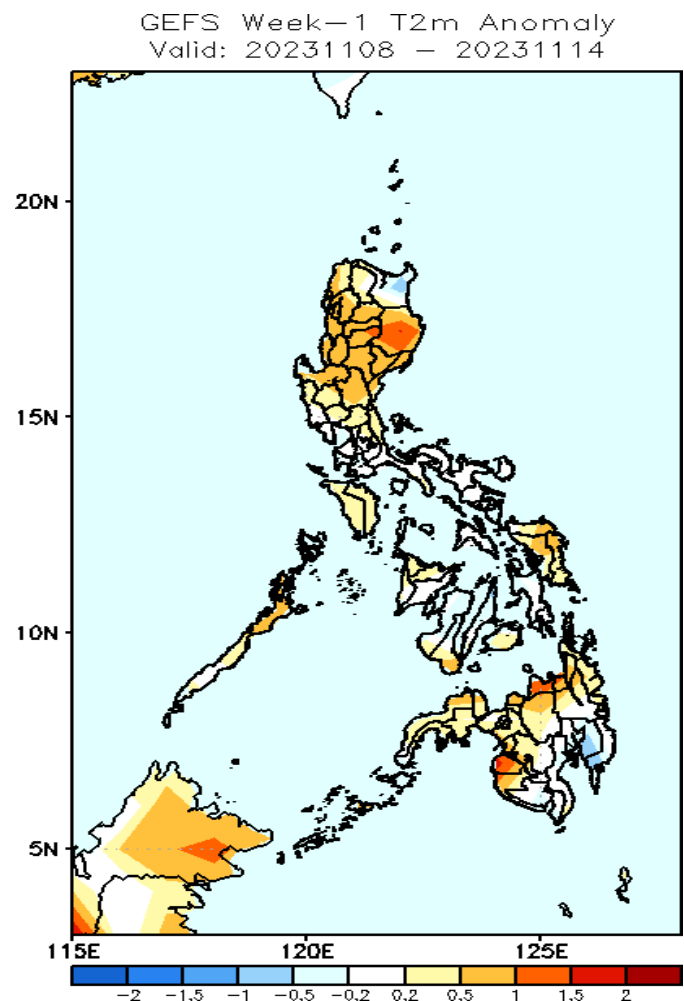
GEFS Week-2 Exceedance Prob. > 200mm
Valid: 20231115 - 20231121



Probability to Exceed 200mm

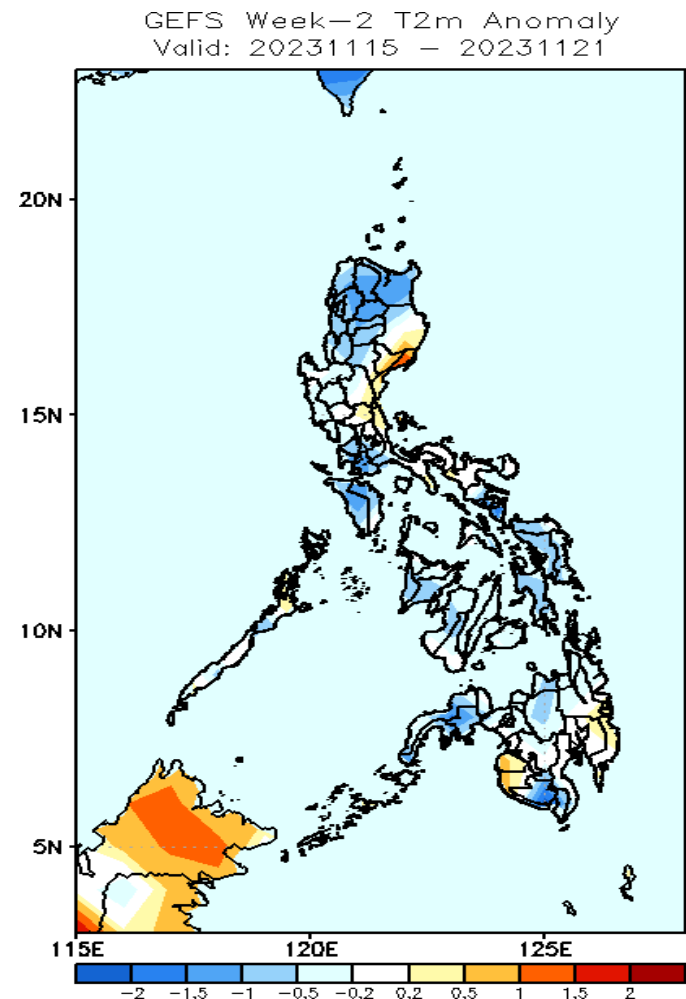
- Low in most parts of the country.

GEFS Week-1 & 2 Forecasts: T2m Anomaly



2m Temperature Week 1: Nov 08 -14, 2023

Average to warmer than average surface air temperature will likely be experienced in most parts of the country.



2m Temperature Week 2: Nov 15 - 21, 2023

Average to cooler than average surface air temperature will likely be experienced in most parts of the country except in Aurora, Maguindanao and Sultan Kudarat where slightly warmer than average temperature is expected.