



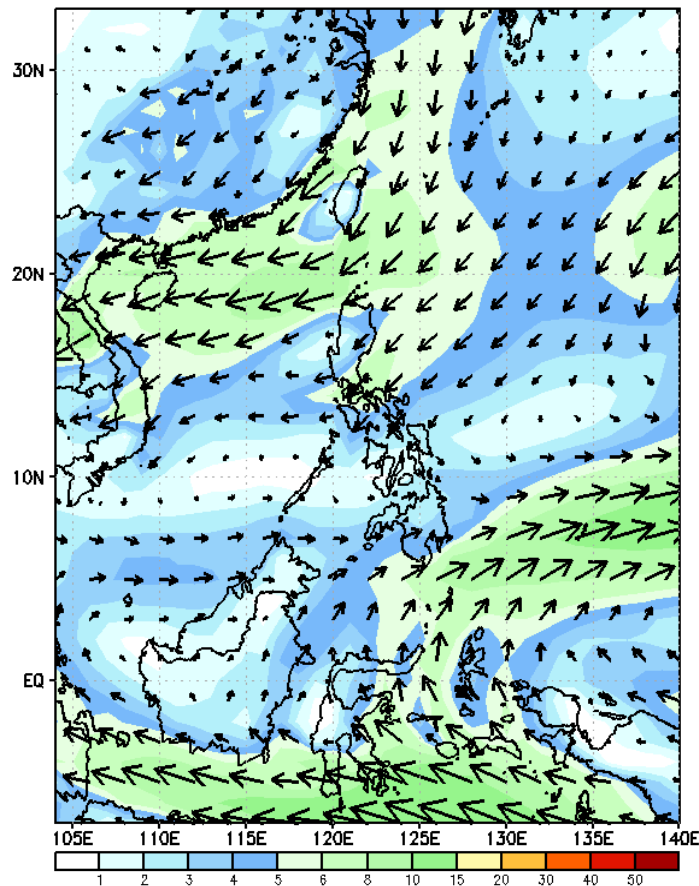
Week 1 & Week 2 Forecast for the Philippines using GEFS Model



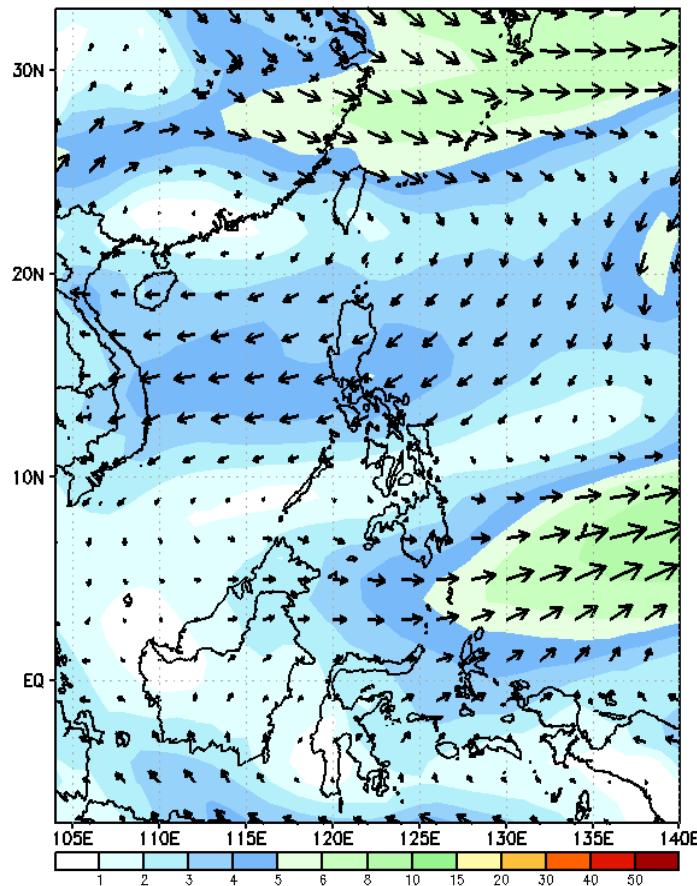
GEFS Week-1 Forecasts: Wind Forecast

Week 1: Oct 09 - 15, 2023

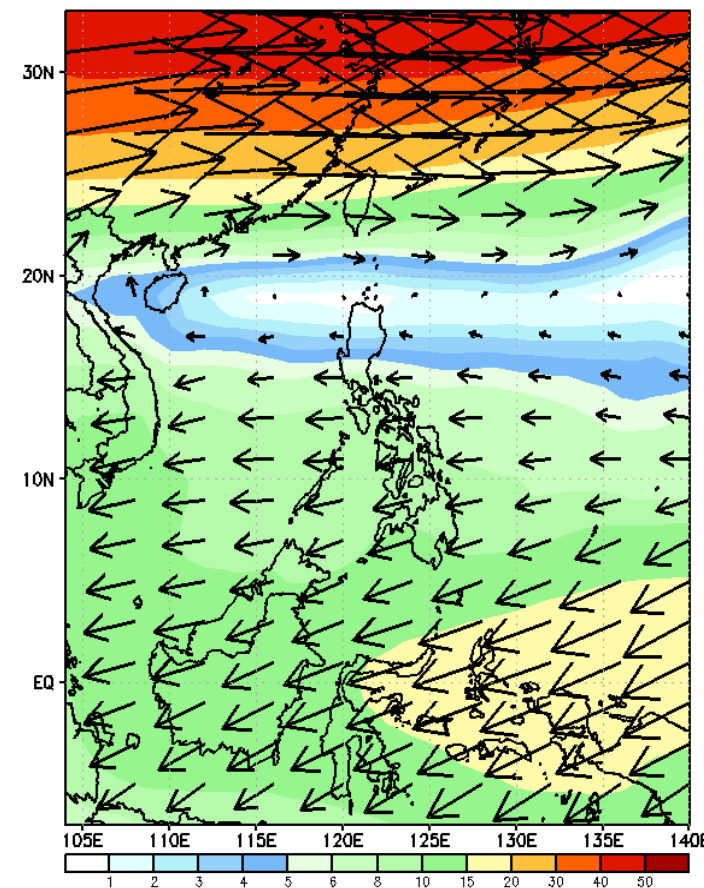
GEFS Week-1 850-hPa Wind Total
Valid: 20231009 - 20231015



GEFS Week-1 700-hPa Wind Total
Valid: 20231009 - 20231015



GEFS Week-1 200-hPa Wind Total
Valid: 20231009 - 20231015



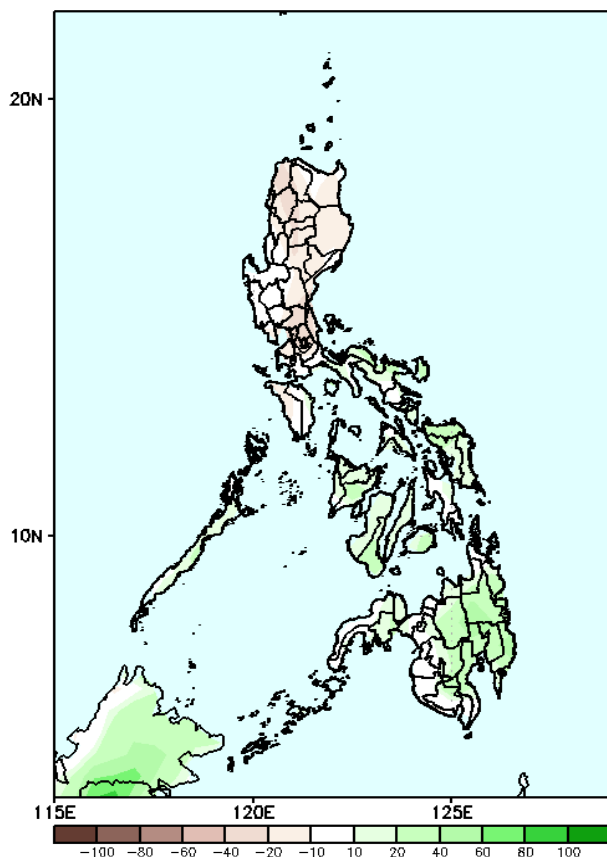
Northeasterly windflow affecting Luzon while westerly windflow affecting Visayas and Mindanao.

Precipitation Anomaly and Exceedance Probability > 25/50 mm



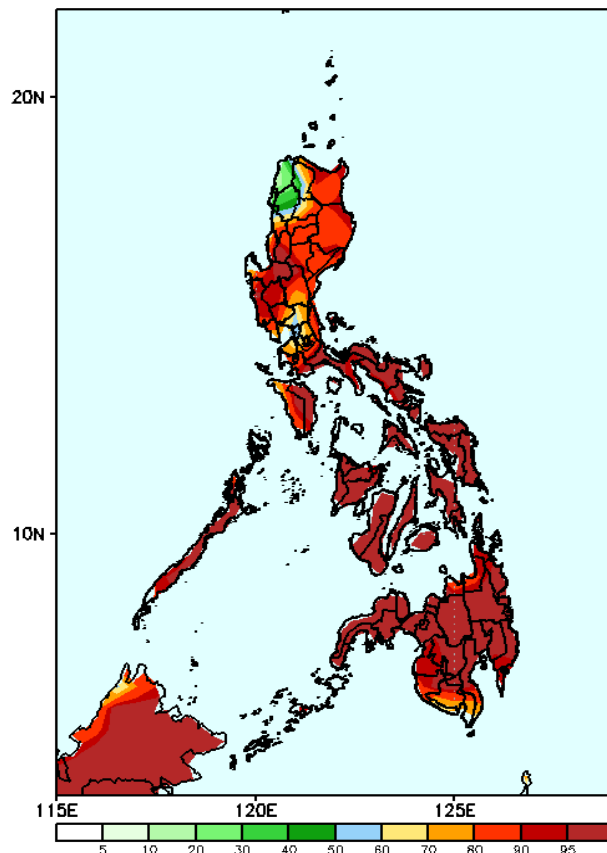
Week 1: Oct 09 - 15, 2023

GEFS Week-1 Precip Anomaly
Valid: 20231009 - 20231015



Rainfall deficit of 10-20mm is expected in most parts of Luzon while 20-60mm increase of rainfall in Bicol Region and most parts of Visayas and Mindanao.

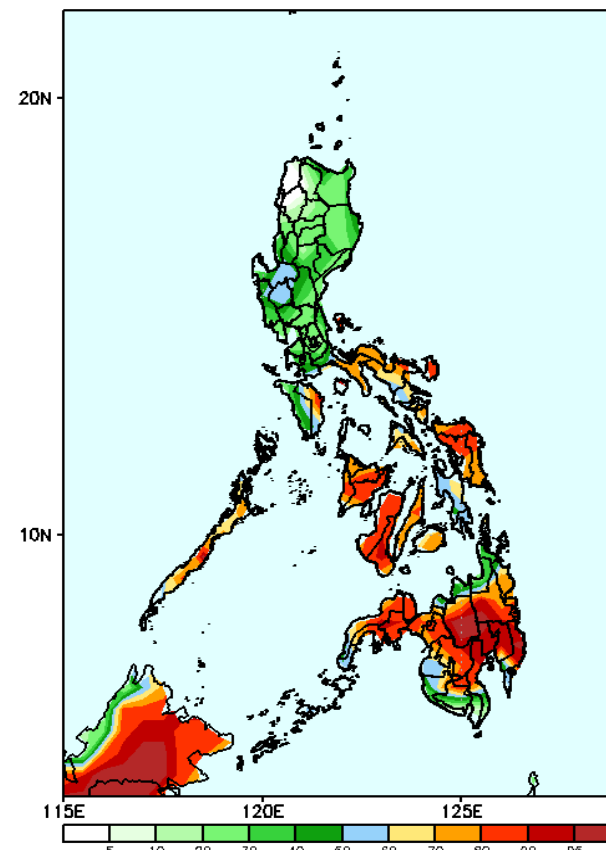
GEFS Week-1 Exceedance Prob. > 25mm
Valid: 20231009 - 20231015



Probability to Exceed 25mm

- High to very high across the country.
- Moderate to high in NCR, Ilocos Norte and Abra

GEFS Week-1 Exceedance Prob. > 50mm
Valid: 20231009 - 20231015



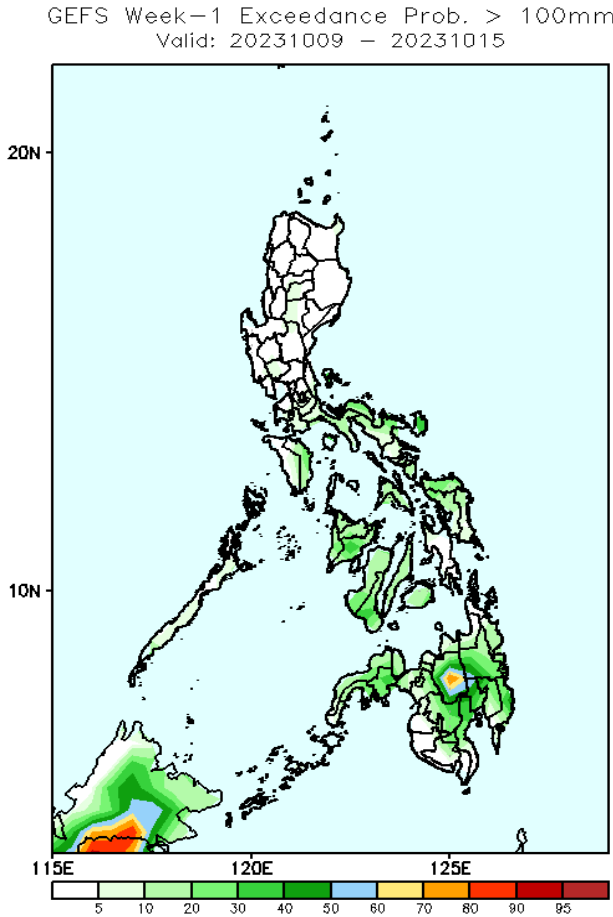
Probability to Exceed 50mm

- High to very high over most parts of Mindanao
- Moderate to high over Quezon, Bicol region, Mindoro Oriental, Visayas, Misamis Oriental, Agusan del Norte, Surigao del Norte and the western portion of SOCCSKSARGEN;
- Low to moderate over the remaining parts of Luzon.

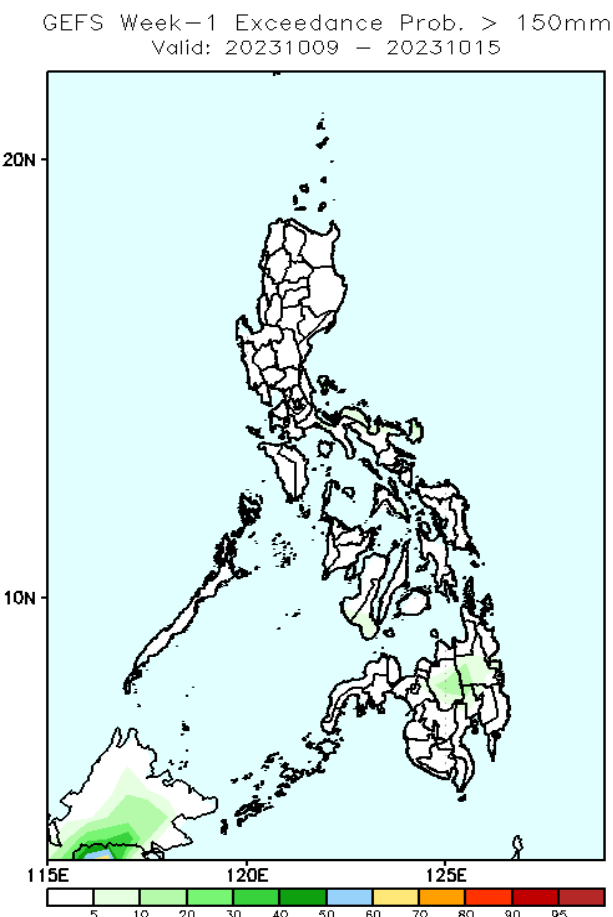
Exceedance Probability > 100/150/200 mm

Week 1: Oct 09 - 15, 2023

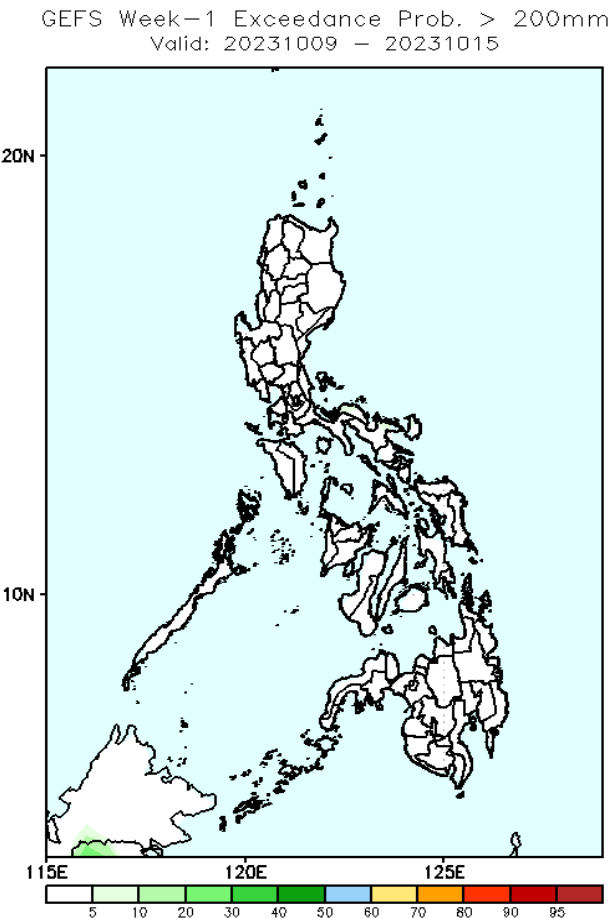
- Very high probability
- High Probability
- Moderate Probability
- Low Probability



Probability to Exceed 100mm
• Low in most parts of the country.



Probability to Exceed 150mm
• Low in most parts of the country.

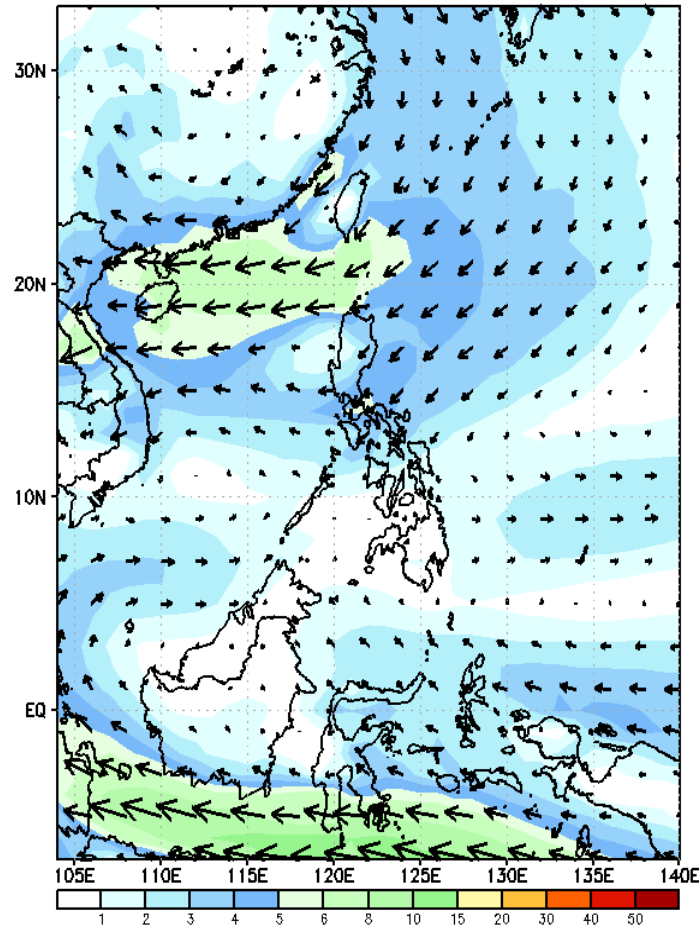


Probability to Exceed 200mm
• Low in most parts of the country.

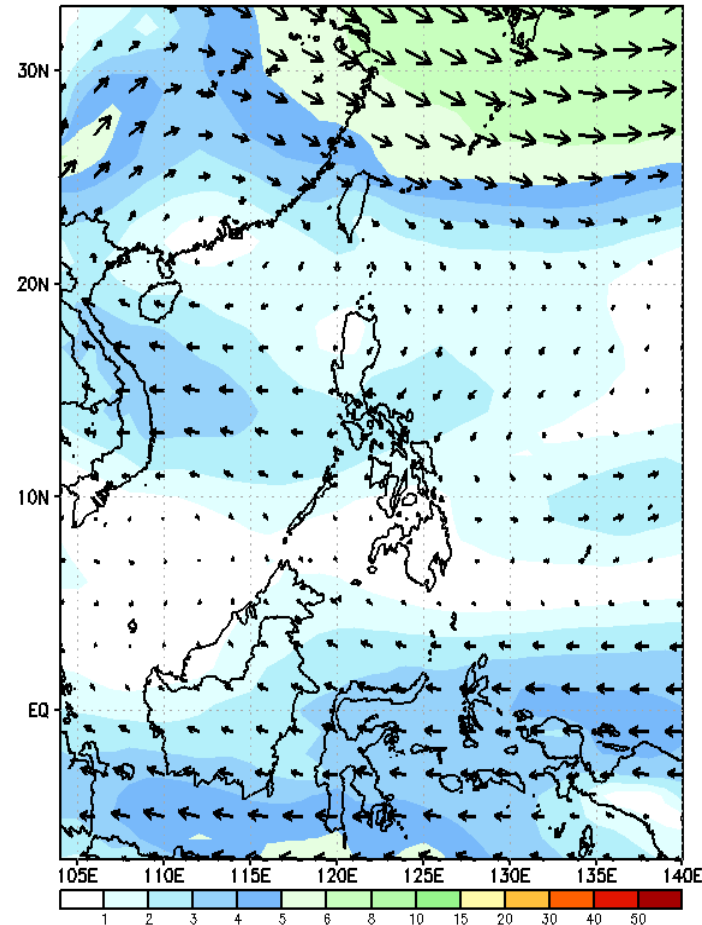
GEFS Week-2 Forecasts: Wind Forecast

Week 2: Oct 16 - 22, 2023

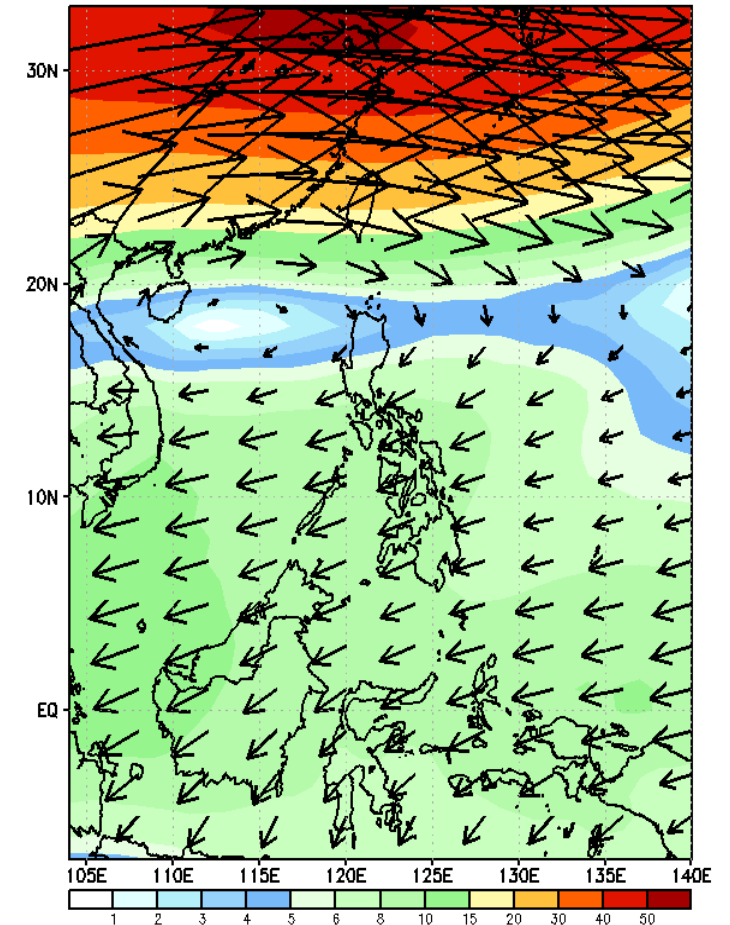
GEFS Week-2 850-hPa Wind Total
Valid: 20231016 - 20231022



GEFS Week-2 700-hPa Wind Total
Valid: 20231016 - 20231022

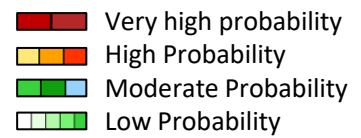


GEFS Week-2 200-hPa Wind Total
Valid: 20231016 - 20231022



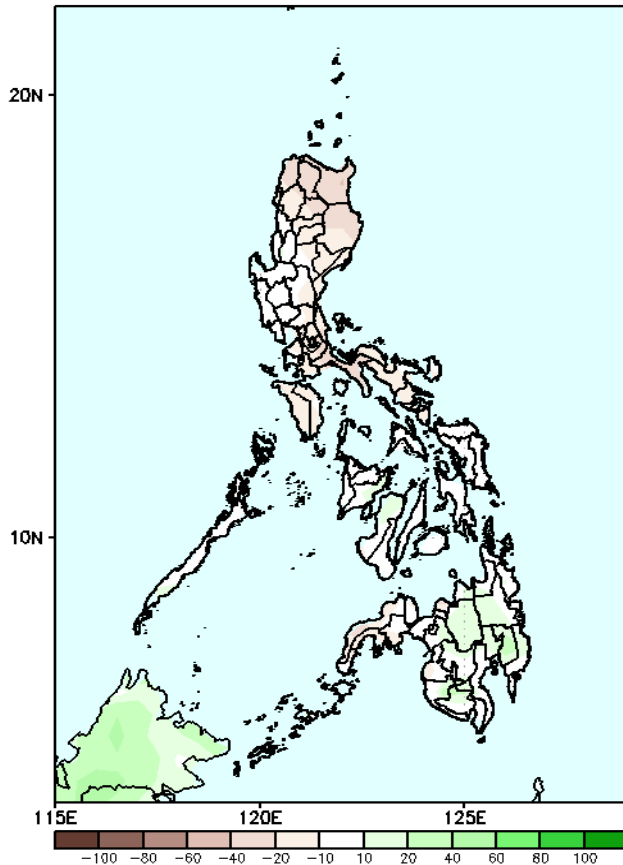
Northeasterly windflow affecting Luzon while westerly windflow affecting Mindanao.

Precipitation Anomaly and Exceedance Probability > 25/50 mm



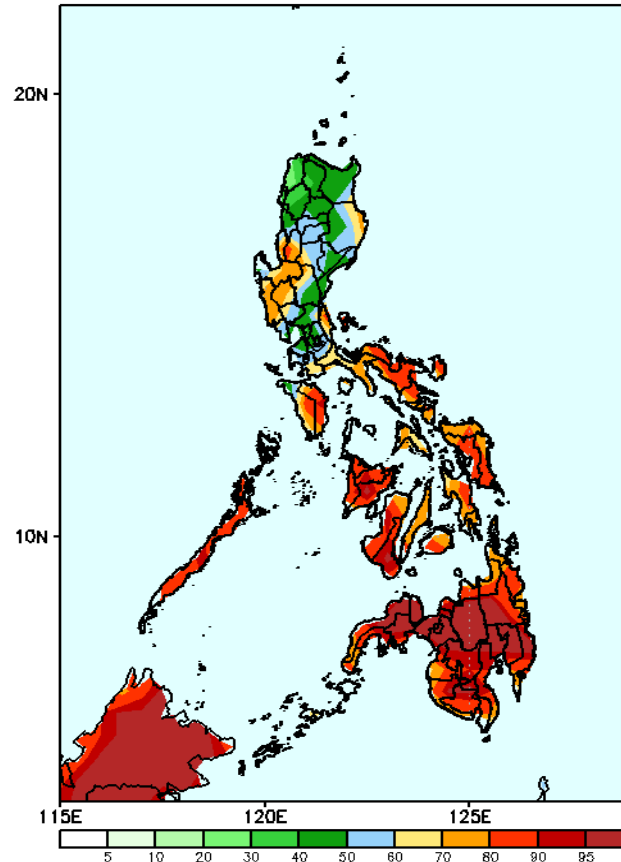
Week 2: Oct 16 - 22, 2023

GEFS Week-2 Precip Anomaly
Valid: 20231016 - 20231022



Rainfall deficit of 10-40mm will be likely in most parts of the country except in Bukidnon and eastern Mindanao where 10-30mm increase of rainfall is expected.

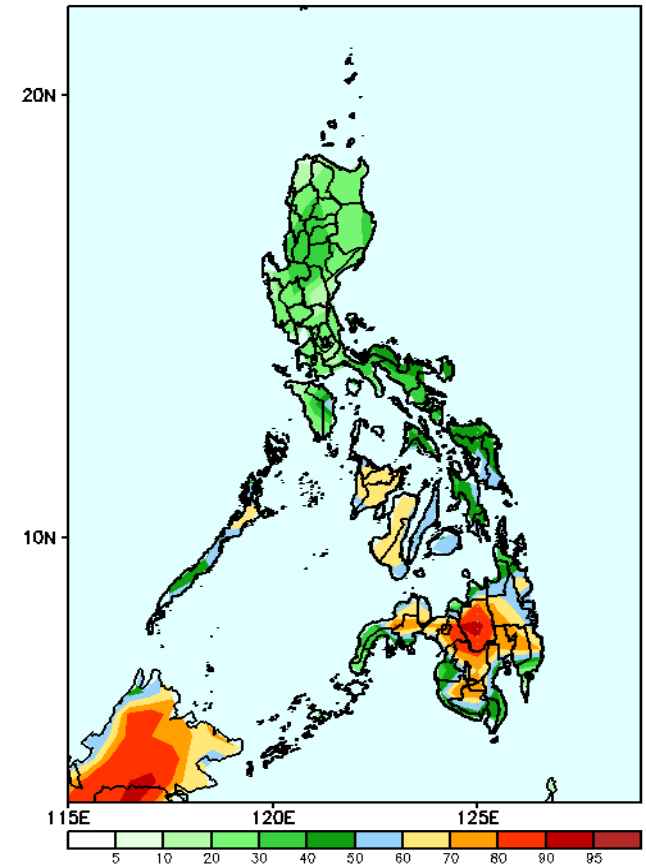
GEFS Week-2 Exceedance Prob. > 25mm
Valid: 20231016 - 20231022



Probability to Exceed 25mm

- High to very high over most parts of Visayas and Mindanao;
- Moderate to high over most parts of Luzon.

GEFS Week-2 Exceedance Prob. > 50mm
Valid: 20231016 - 20231022



Probability to Exceed 50mm

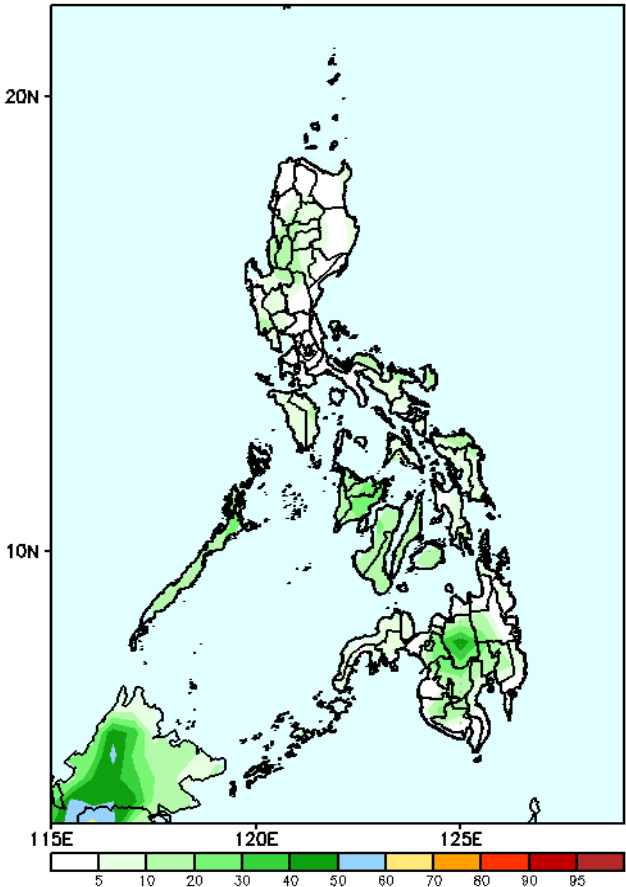
- Moderate to high over most parts of Visayas and Mindanao;
- Low to moderate over most parts of Luzon.

Exceedance Probability > 100/150/200 mm

Week 2: Oct 16 - 22, 2023

- Very high probability
- High Probability
- Moderate Probability
- Low Probability

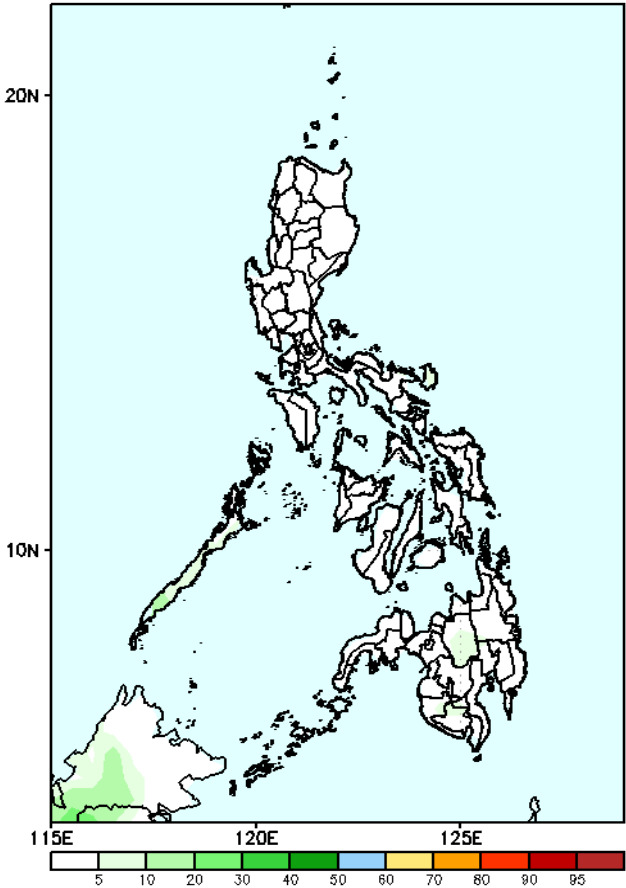
GEFS Week-2 Exceedance Prob. > 100mm
Valid: 20231016 - 20231022



Probability to Exceed 100mm

- Low in most parts of the country.

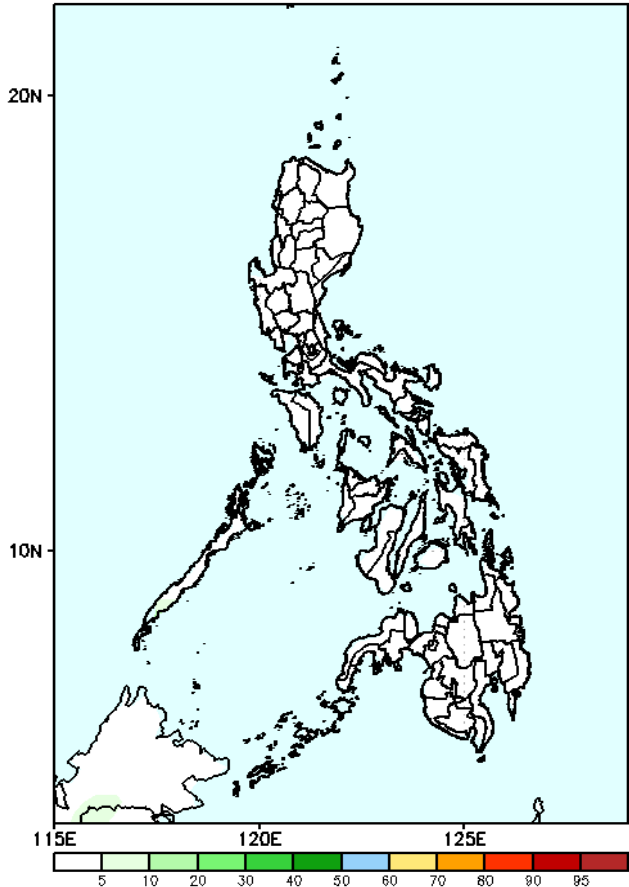
GEFS Week-2 Exceedance Prob. > 150mm
Valid: 20231016 - 20231022



Probability to Exceed 150mm

- Low in most parts of the country.

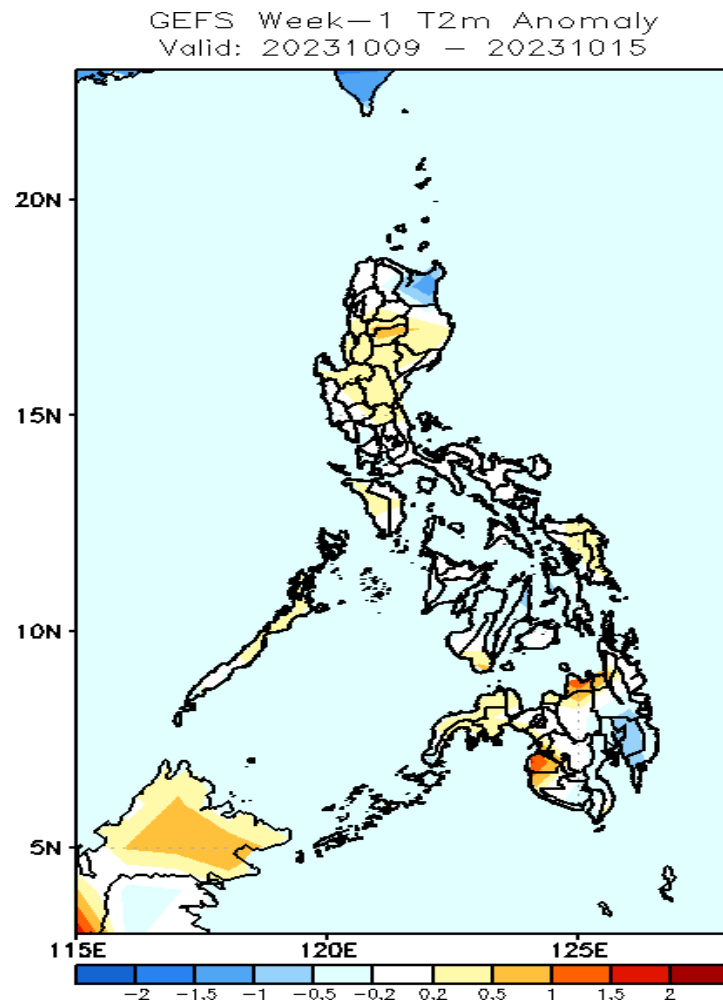
GEFS Week-2 Exceedance Prob. > 200mm
Valid: 20231016 - 20231022



Probability to Exceed 200mm

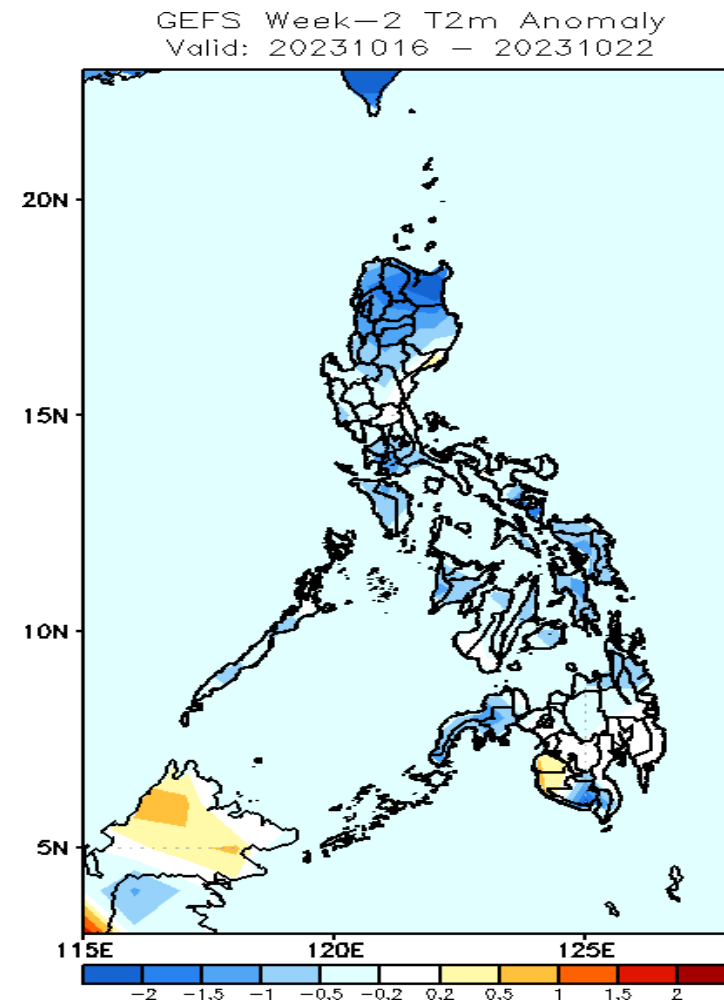
- Low in most parts of the country.

GEFS Week-1 & 2 Forecasts: T2m Anomaly



2m Temperature Week 1: Oct 09 - 15, 2023

Average to warmer than average surface air temperature will likely experience in most parts of the country except in Cagayan and Davao Region where slightly cooler temperature is expected.



2m Temperature Week 2: Oct 16 - 22, 2023

Average to cooler than average surface air temperature will likely experience in most parts of the country.