



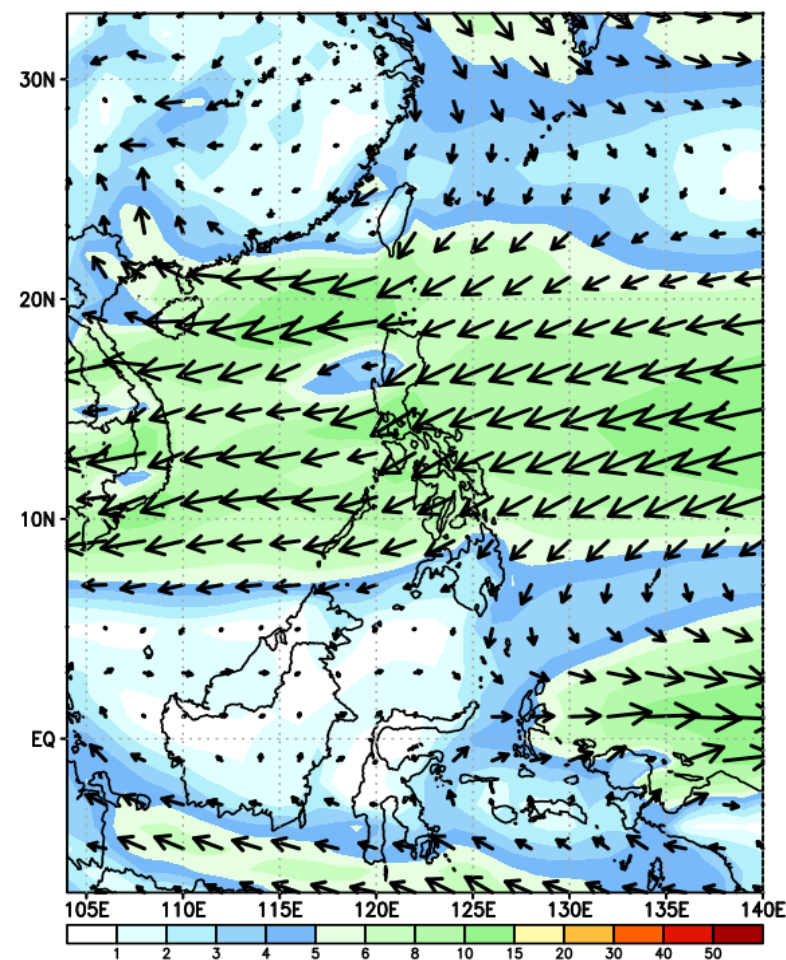
Week 1 & Week 2 Forecast for the Philippines using GEFS Model



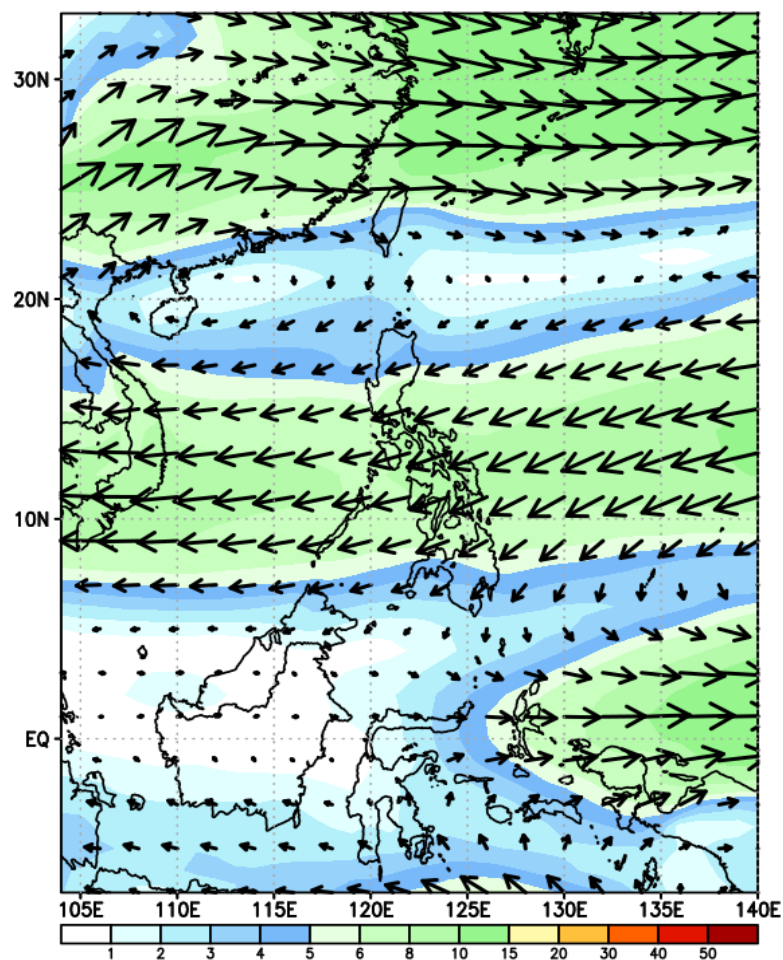
GEFS Week-1 Forecasts: Wind Forecast

Week 1: Nov 10-16, 2023

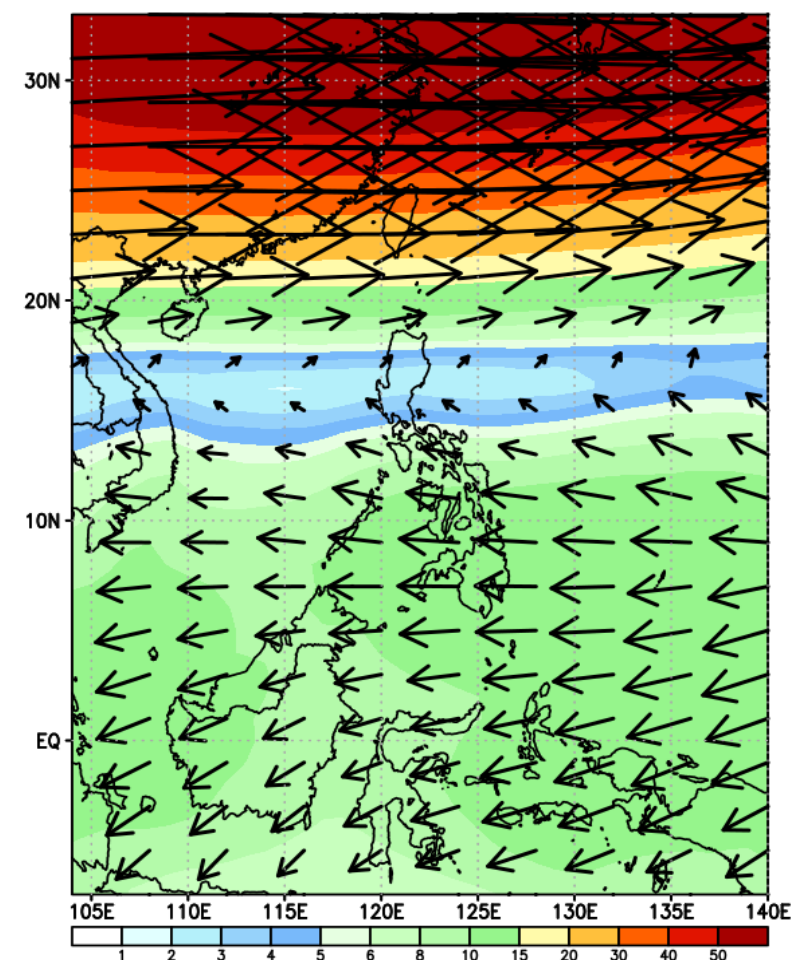
GEFS Week-1 850-hPa Wind Total
Valid: 20231110 - 20231116



GEFS Week-1 700-hPa Wind Total
Valid: 20231110 - 20231116



GEFS Week-1 200-hPa Wind Total
Valid: 20231110 - 20231116



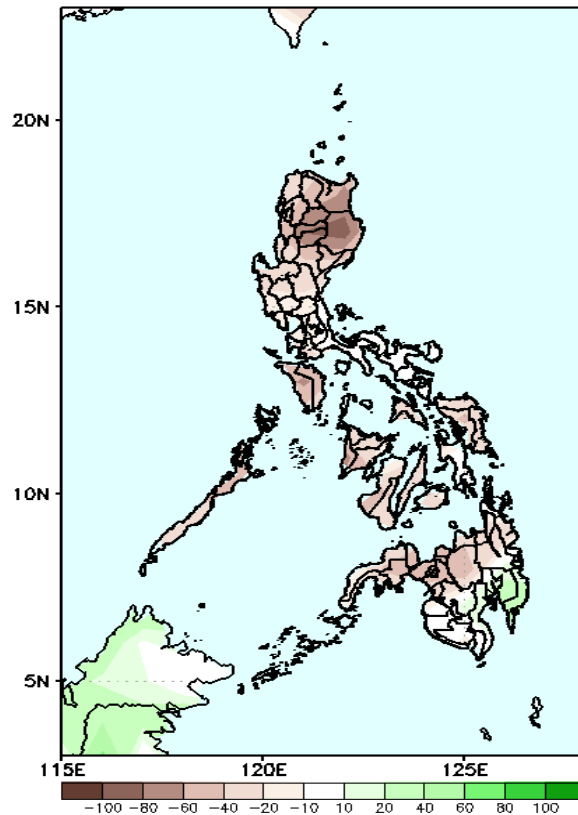
Northeast Monsoon affecting Northern Luzon. Easterlies affecting the rest of the country.

Precipitation Anomaly and Exceedance Probability > 25/50 mm



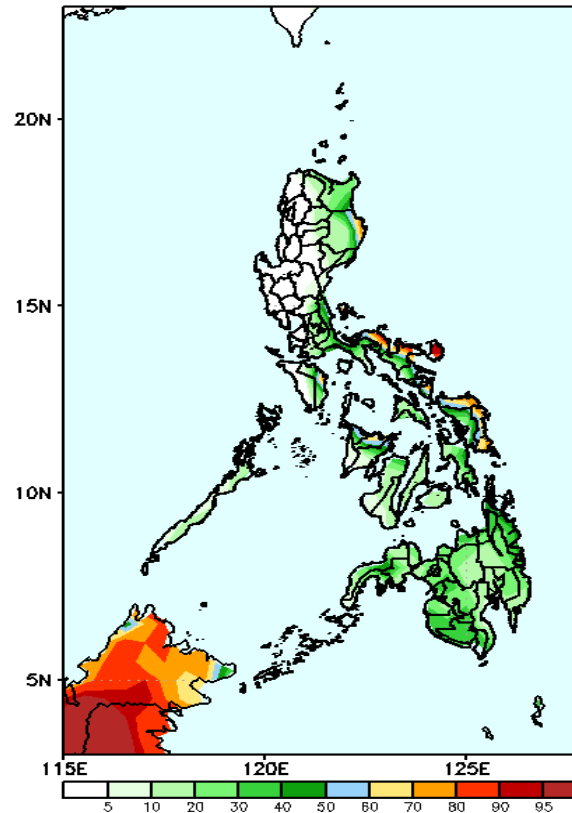
Week 1: Nov 10-16, 2023

GEFS Week-1 Precip Anomaly
Valid: 20231110 - 20231116



Rainfall deficit of 40-100mm is expected in most parts of the country except Davao Region where 10-30mm increase of rainfall is more likely.

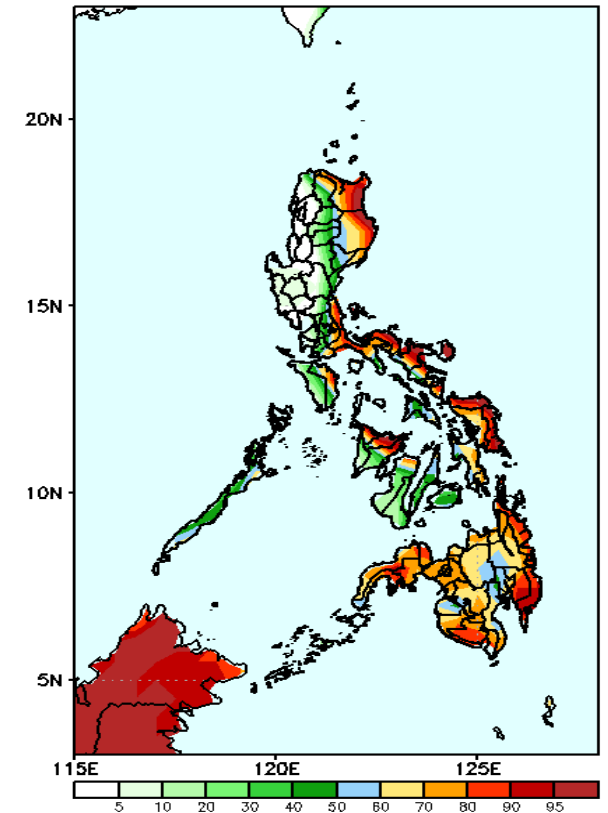
GEFS Week-1 Exceedance Prob. > 50mm
Valid: 20231110 - 20231116



Probability to Exceed 50mm

- High to very high over Samar provinces, Camarines Norte and Catanduanes;
- Moderate to high in most parts of Eastern Luzon, the rest of Bicol region, Oriental Mindoro, Leyte provinces, northern part of Western Visayas, and most of Mindanao;
- Low to moderate over the rest of the country.

GEFS Week-1 Exceedance Prob. > 25mm
Valid: 20231110 - 20231116



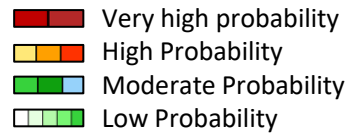
Probability to Exceed 25mm

- Moderate to high in the eastern section of Isabela, Camarines Norte, northern part of Camarines Sur, Sorsogon, Oriental Mindoro, Samar provinces, and Capiz;
- Low to moderate over the rest of the country.

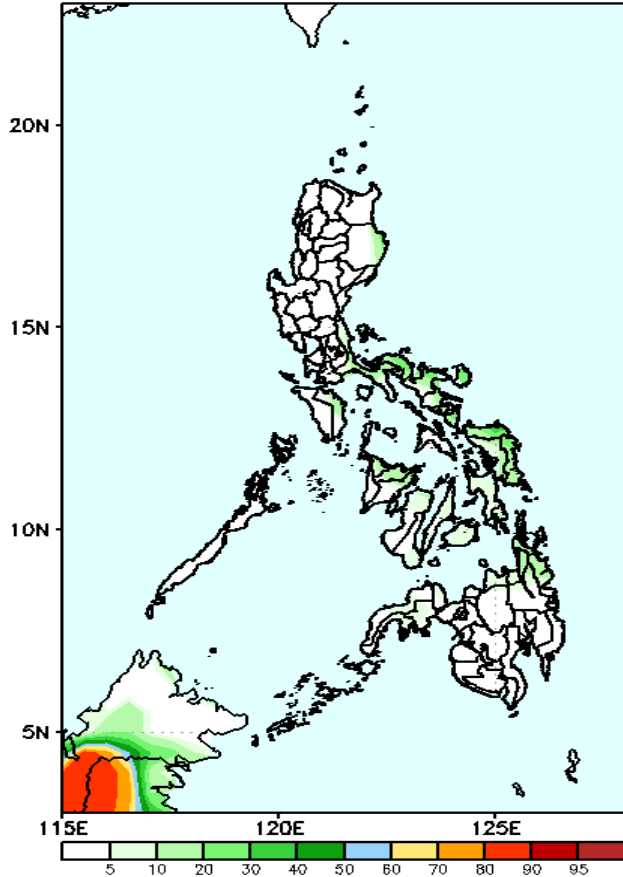


Exceedance Probability > 100/150/200 mm

Week 1: Nov 10-16, 2023



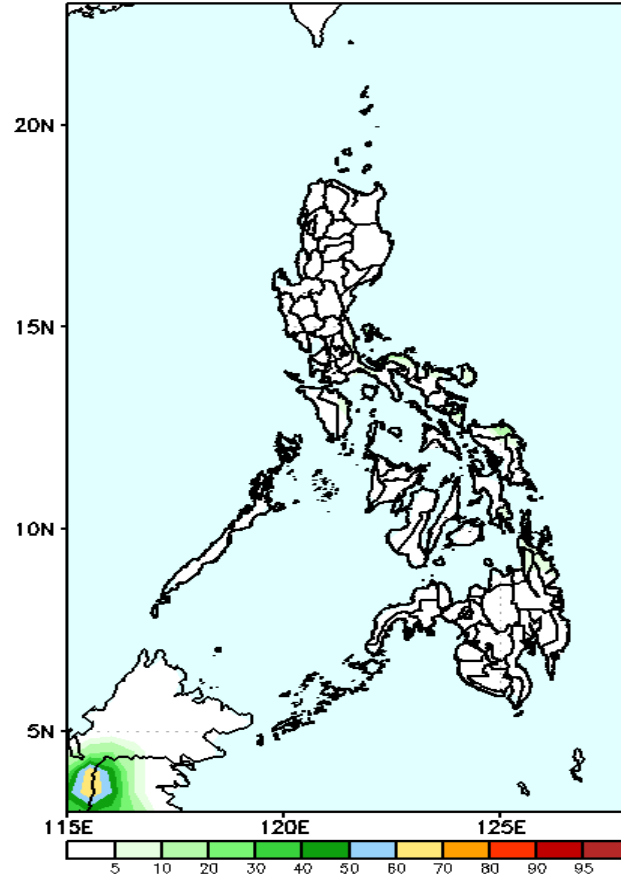
GEFS Week-1 Exceedance Prob. > 100mm
Valid: 20231110 - 20231116



Probability to Exceed 100mm

- Low in most parts of the country.

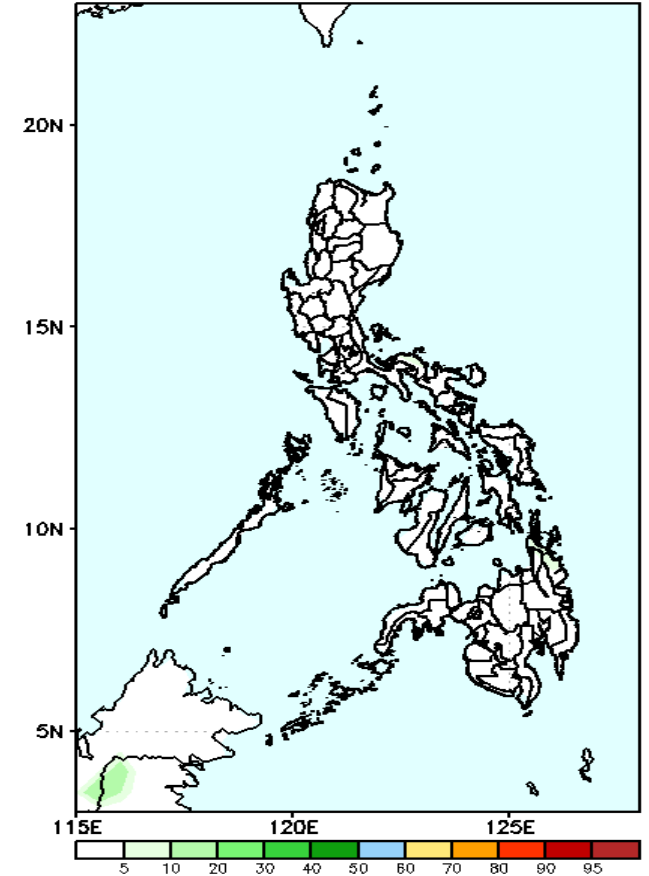
GEFS Week-1 Exceedance Prob. > 150mm
Valid: 20231110 - 20231116



Probability to Exceed 150mm

- Low in most parts of the country.

GEFS Week-1 Exceedance Prob. > 200mm
Valid: 20231110 - 20231116



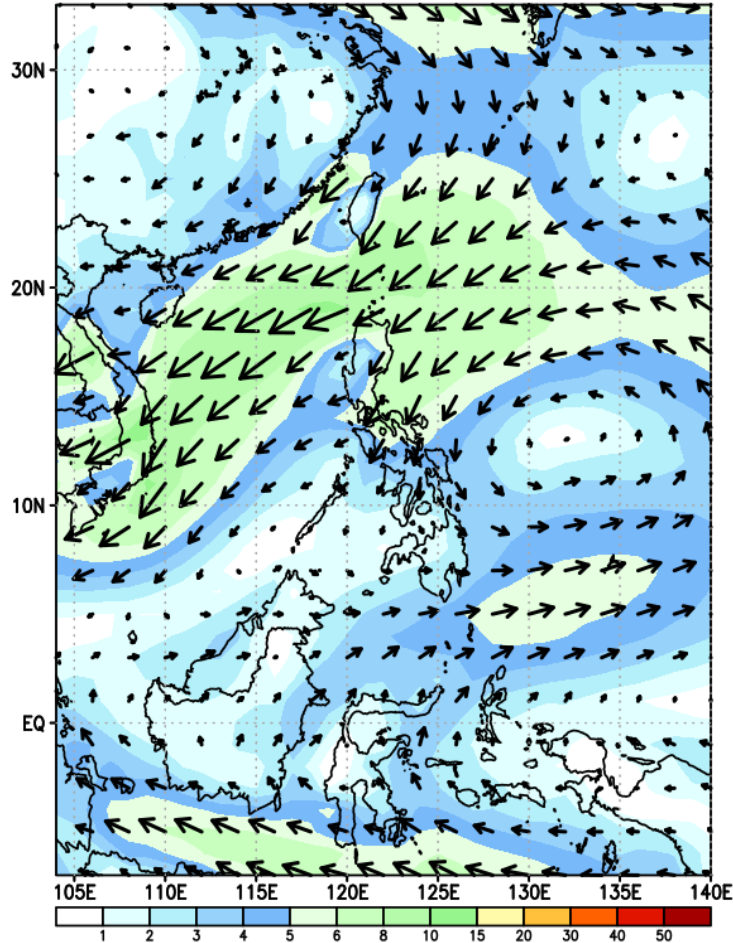
Probability to Exceed 200mm

- Low in most parts of the country.

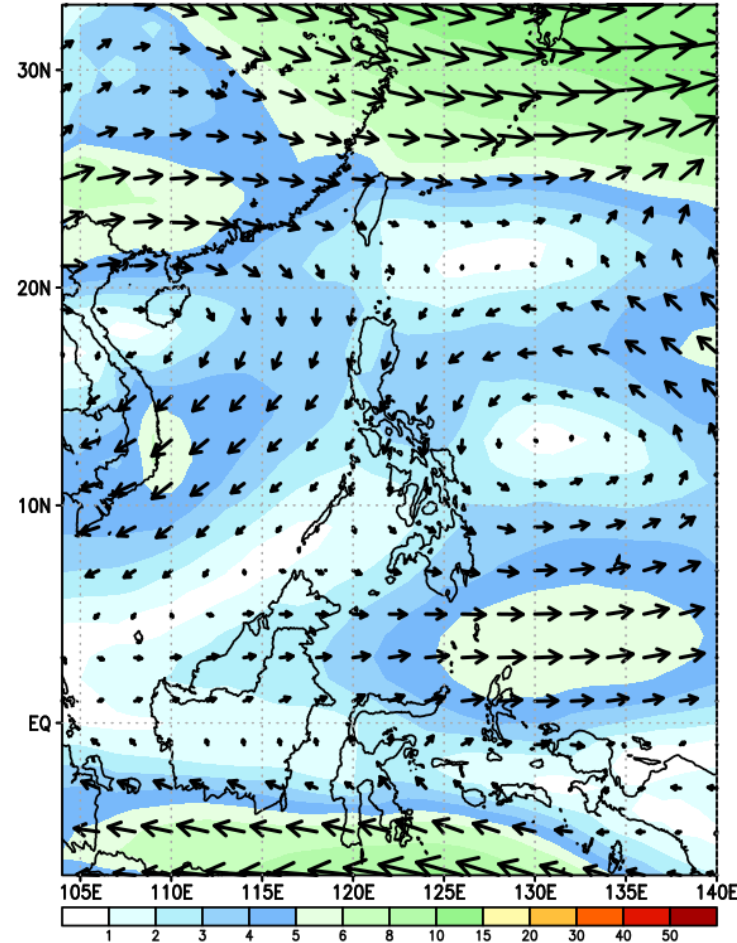
GEFS Week-2 Forecasts: Wind Forecast

Week 2: Nov 17-23, 2023

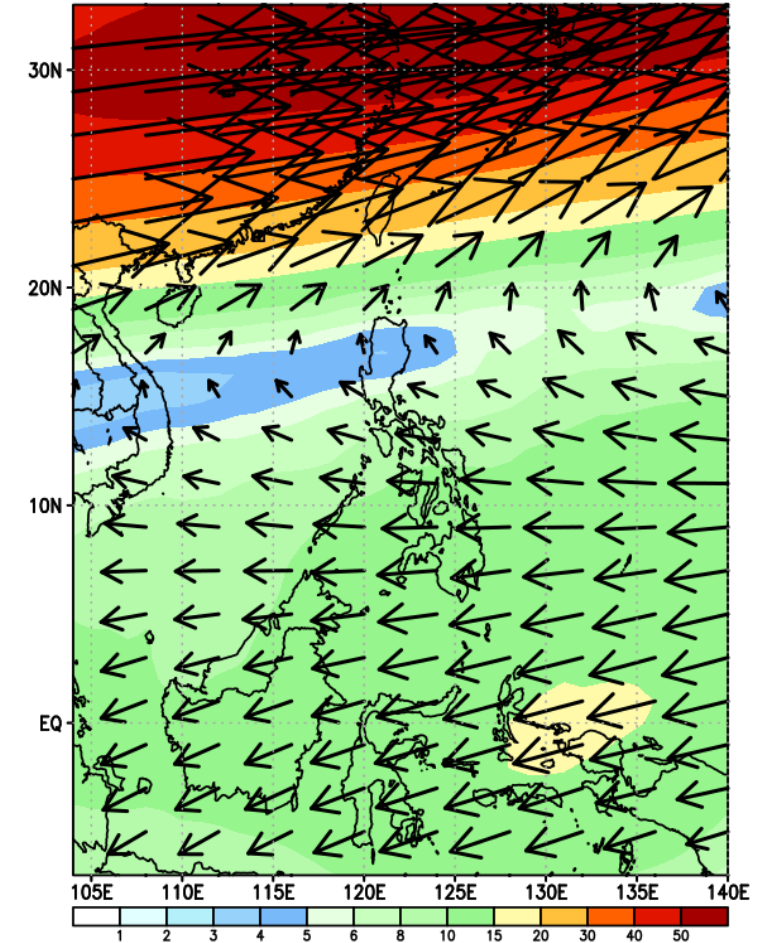
GEFS Week-2 850-hPa Wind Total
Valid: 20231117 - 20231123



GEFS Week-2 700-hPa Wind Total
Valid: 20231117 - 20231123



GEFS Week-2 200-hPa Wind Total
Valid: 20231117 - 20231123



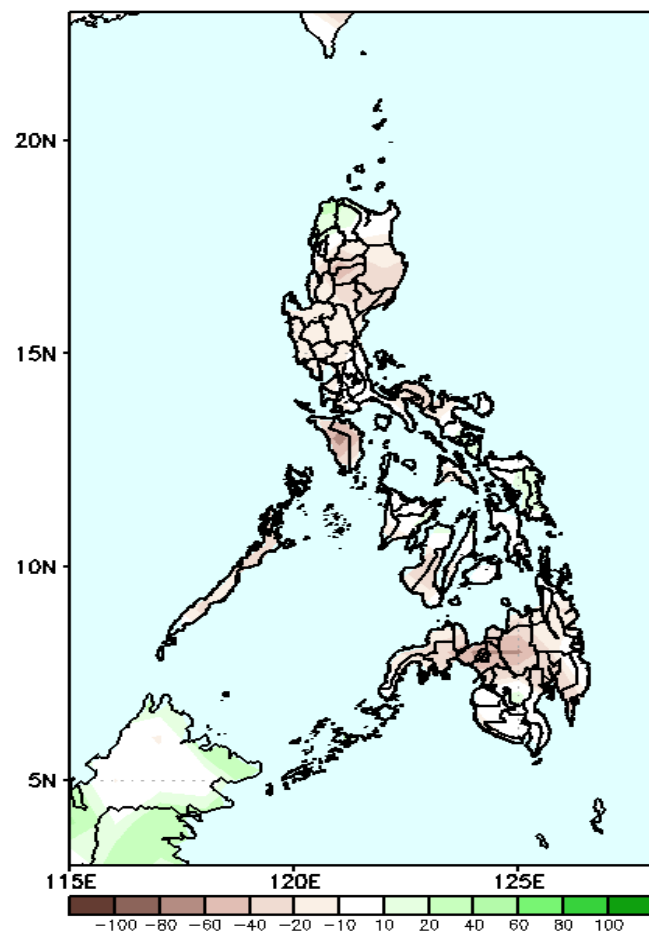
Northeast Monsoon affecting Luzon and Eastern Visayas. Easterlies the rest of the country.

Precipitation Anomaly and Exceedance Probability > 25/50 mm



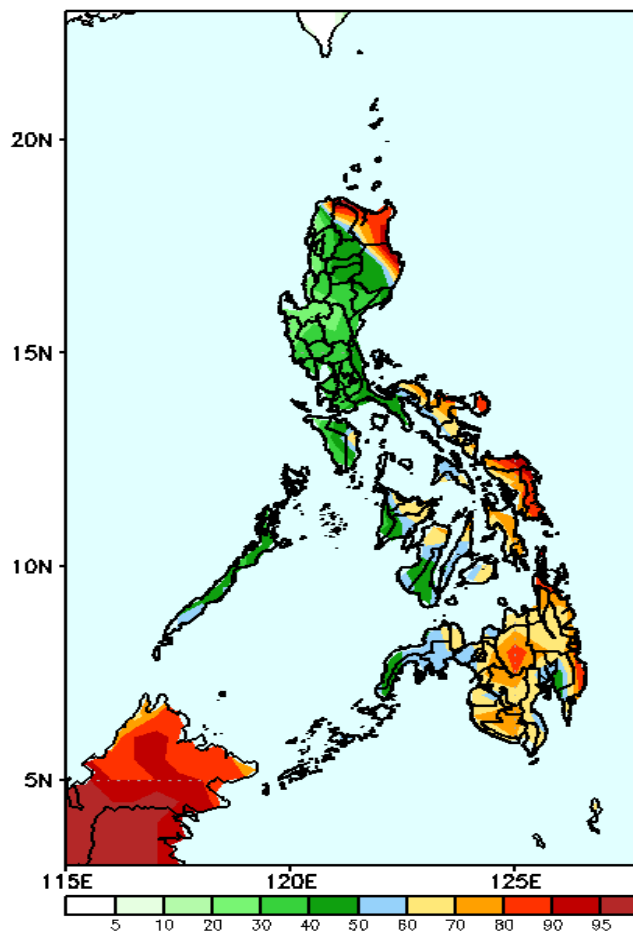
Week 2: Nov 17-23, 2023

GEFS Week-2 Precip Anomaly
Valid: 20231117 - 20231123



Rainfall deficit of 10-40mm is expected in most parts of the country.

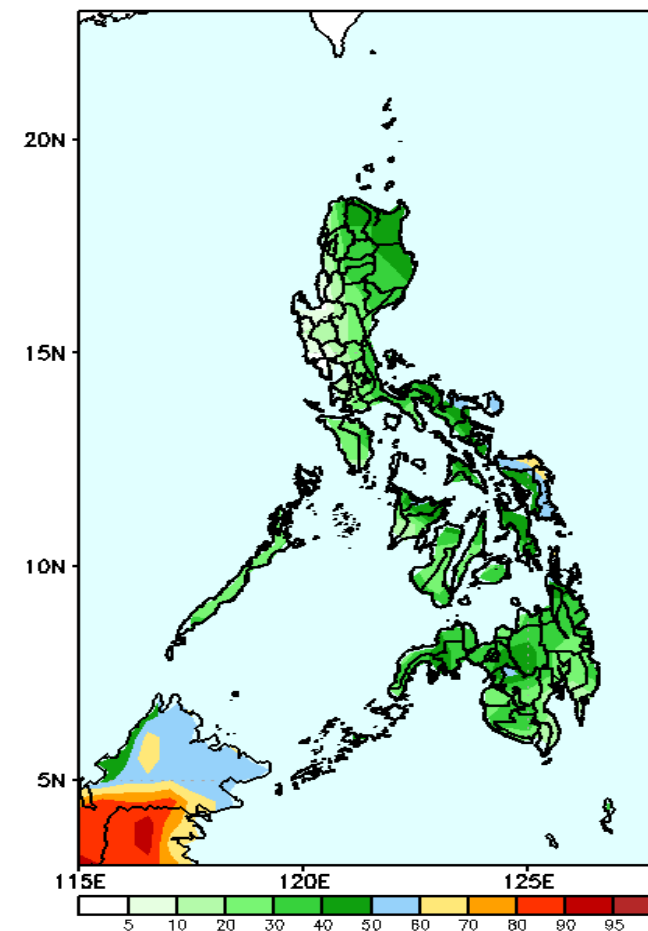
GEFS Week-2 Exceedance Prob. > 25mm
Valid: 20231117 - 20231123



Probability to Exceed 25mm

- High to very high over most parts of northeastern Luzon;
- Moderate to high over the rest of the country.

GEFS Week-2 Exceedance Prob. > 50mm
Valid: 20231117 - 20231123

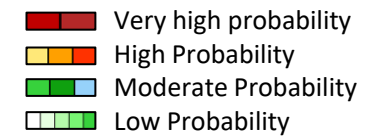


Probability to Exceed 50mm

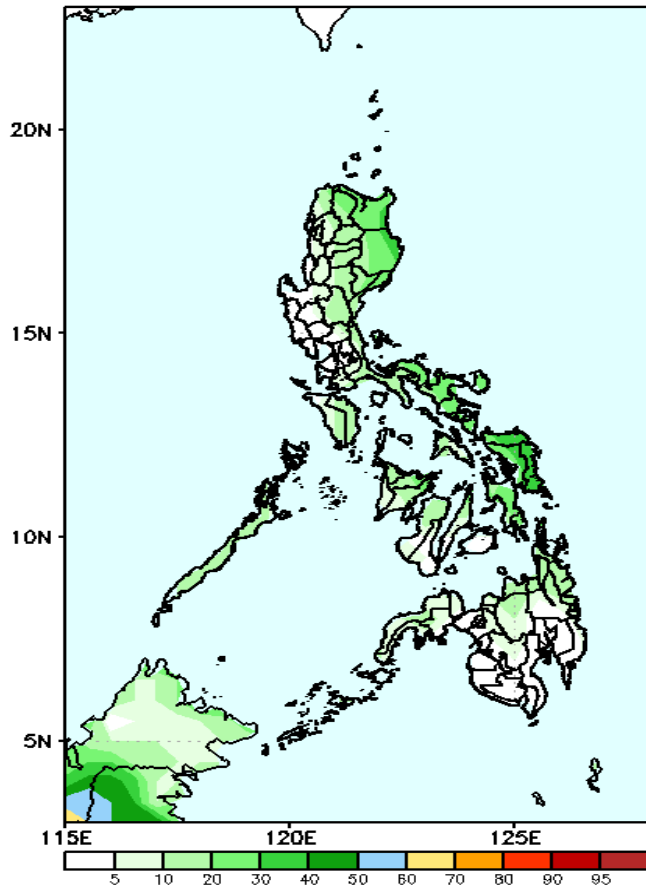
- Moderate to high over Western Visayas;
- Low to moderate over Bicol Region;
- Low elsewhere.

Exceedance Probability > 100/150/200 mm

Week 2: Nov 17-23, 2023



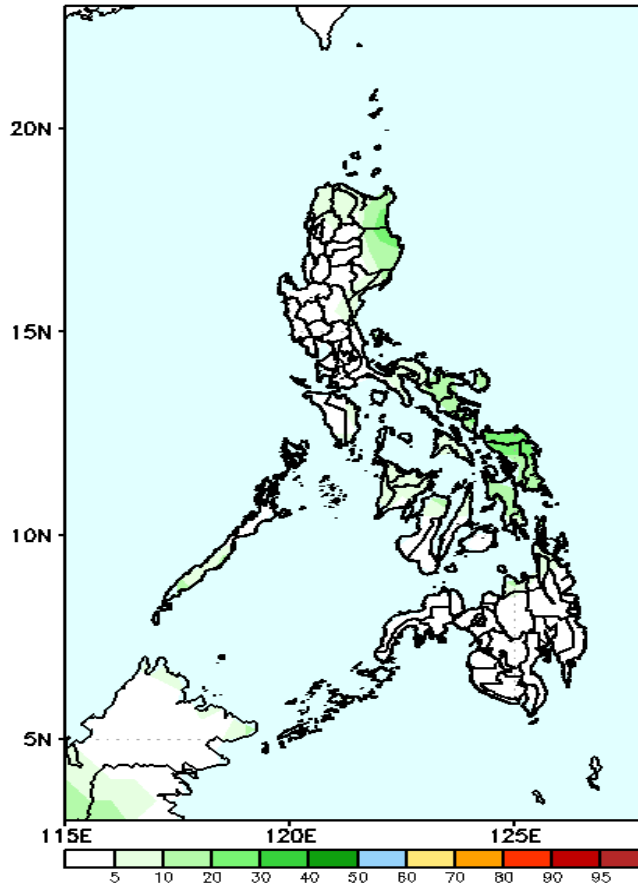
GEFS Week-2 Exceedance Prob. > 100mm
Valid: 20231117 - 20231123



Probability to Exceed 100mm

- Low to moderate over Bicol Region and Samar provinces;
- Low elsewhere.

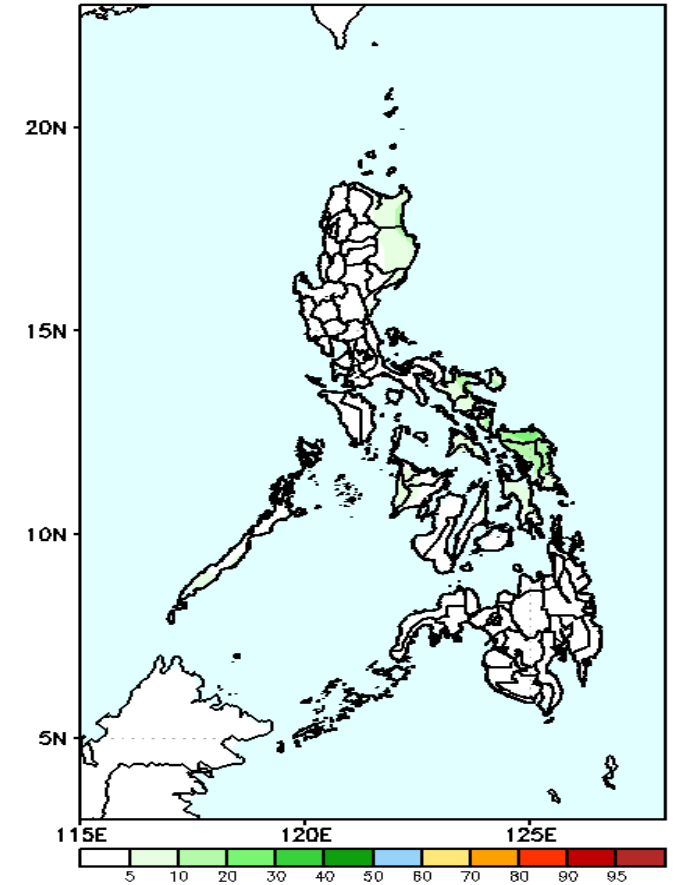
GEFS Week-2 Exceedance Prob. > 150mm
Valid: 20231117 - 20231123



Probability to Exceed 150mm

- Low in most parts of the country.

GEFS Week-2 Exceedance Prob. > 200mm
Valid: 20231117 - 20231123

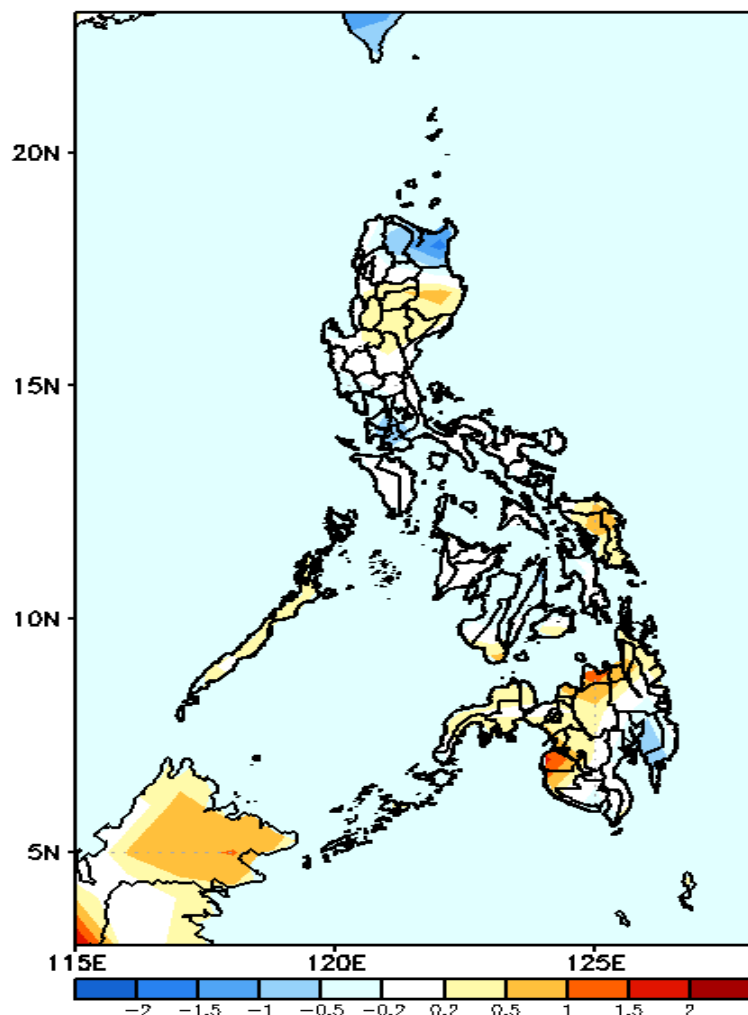


Probability to Exceed 200mm

- Low in most parts of the country.

GEFS Week-1 & 2 Forecasts: T2m Anomaly

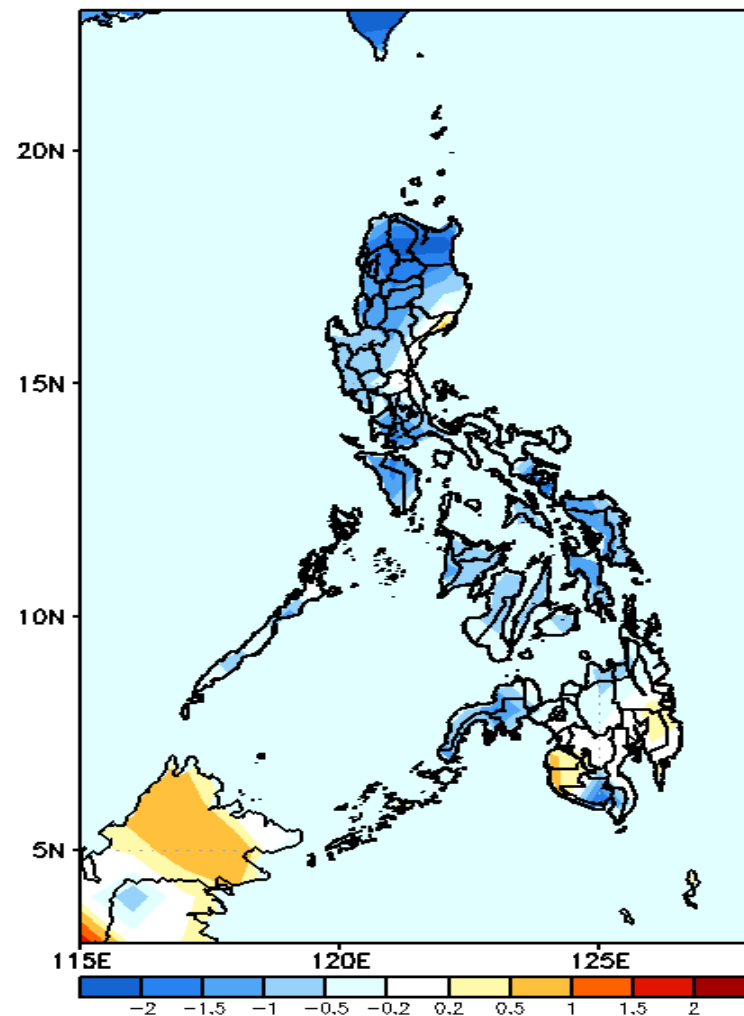
GEFS Week-1 T2m Anomaly
Valid: 20231110 – 20231116



2m Temperature Week 1: Nov 10-16, 2023

Average to warmer than average surface air temperature will likely be experienced in most parts of the country except in Apayao, Cagayan, and some areas in Region 4A and Davao Region where slightly cooler than average temperature is expected.

GEFS Week-2 T2m Anomaly
Valid: 20231117 – 20231123



2m Temperature Week 2: Nov 17-23, 2023

Average to cooler than average surface air temperature will likely be experienced in most parts of the country except in Aurora, Maguindanao and Sultan Kudarat where slightly warmer than average temperature is expected.