



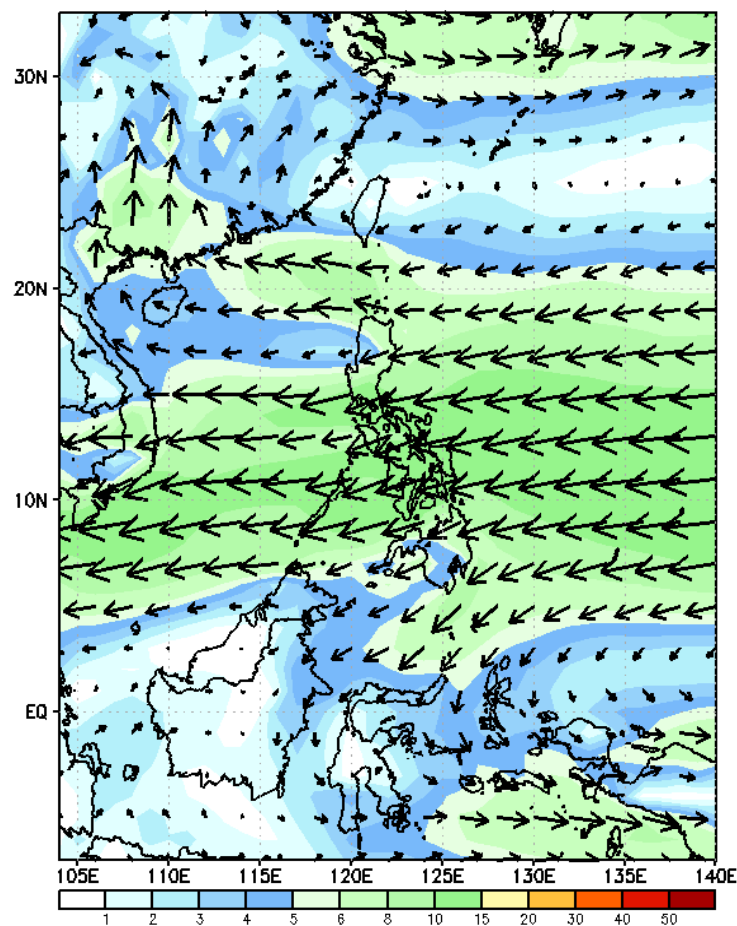
Week 1 & Week 2 Forecast for the Philippines using GEFS Model



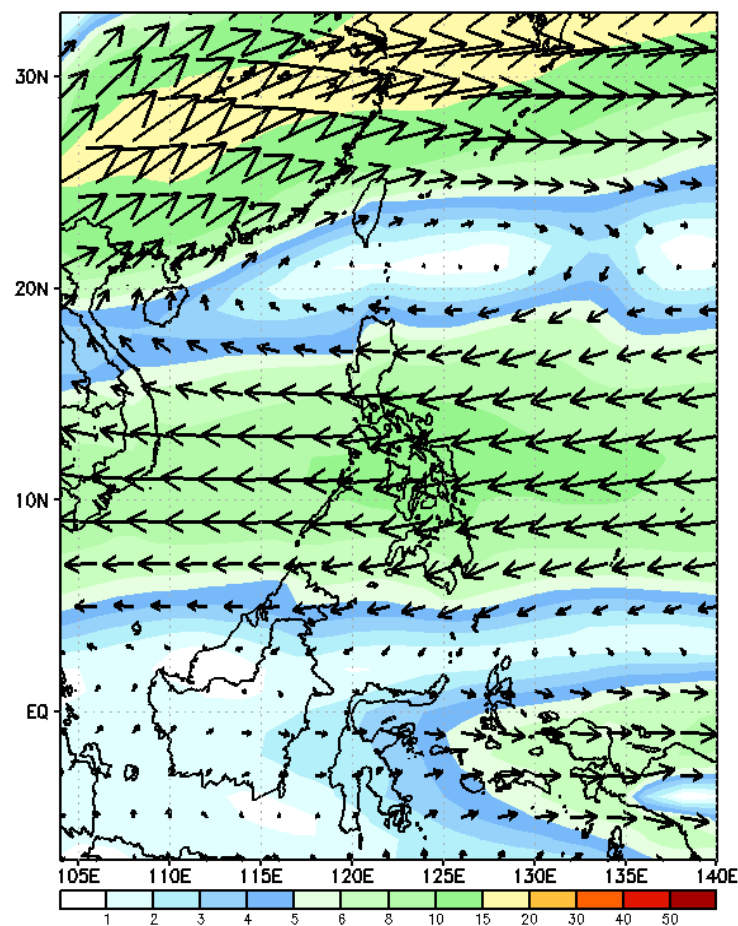
GEFS Week-1 Forecasts: Wind Forecast

Week 1: Dec 11-17, 2023

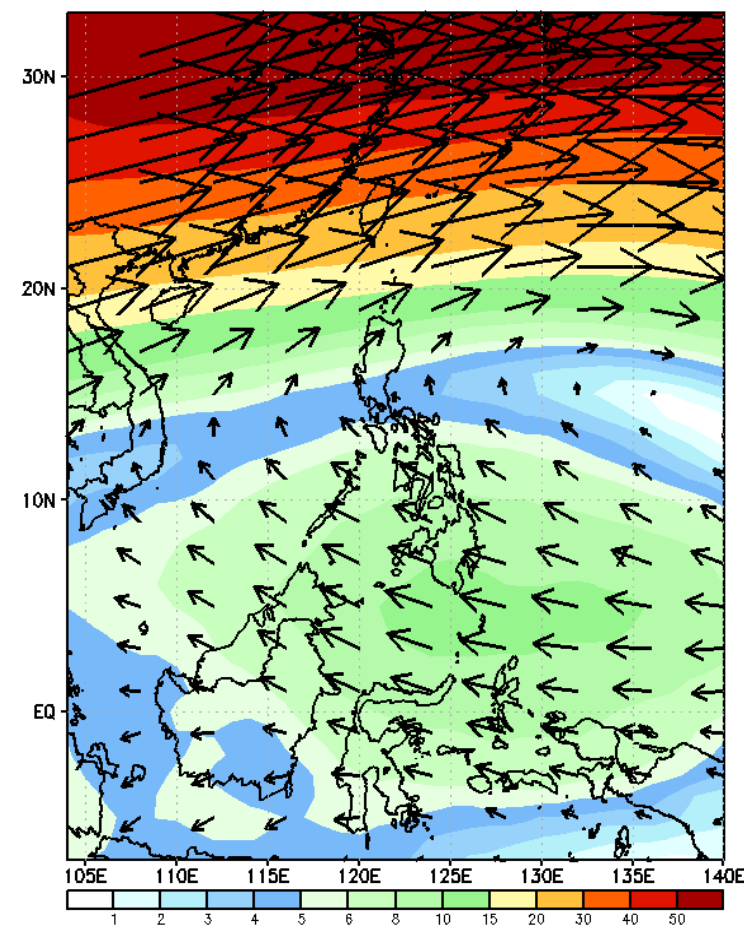
GEFS Week-1 850-hPa Wind Total
Valid: 20231211 - 20231217



GEFS Week-1 700-hPa Wind Total
Valid: 20231211 - 20231217

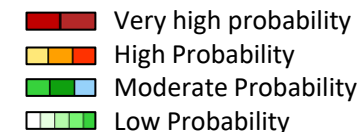


GEFS Week-1 200-hPa Wind Total
Valid: 20231211 - 20231217



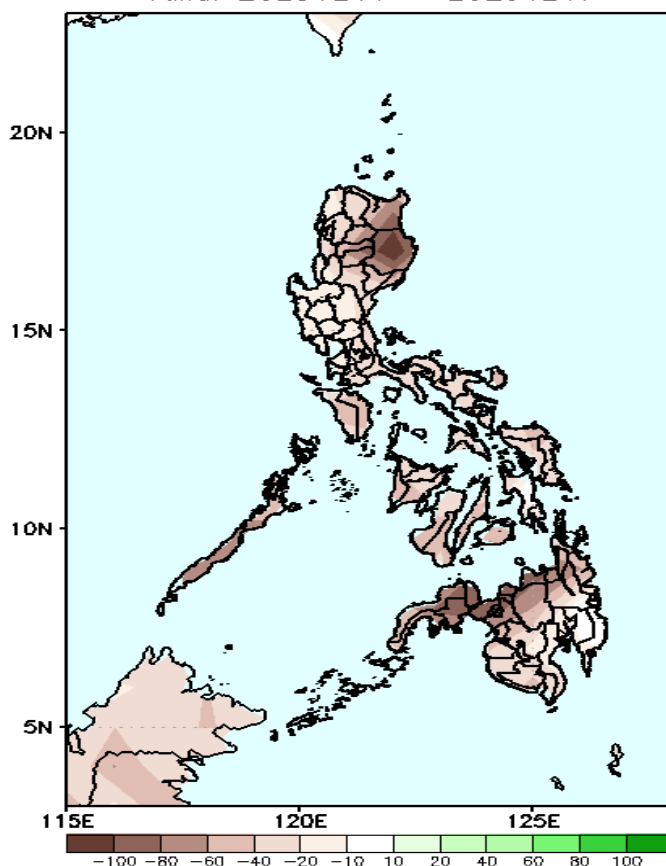
Easterlies affecting most parts of the country.

Precipitation Anomaly and Exceedance Probability > 25/50 mm



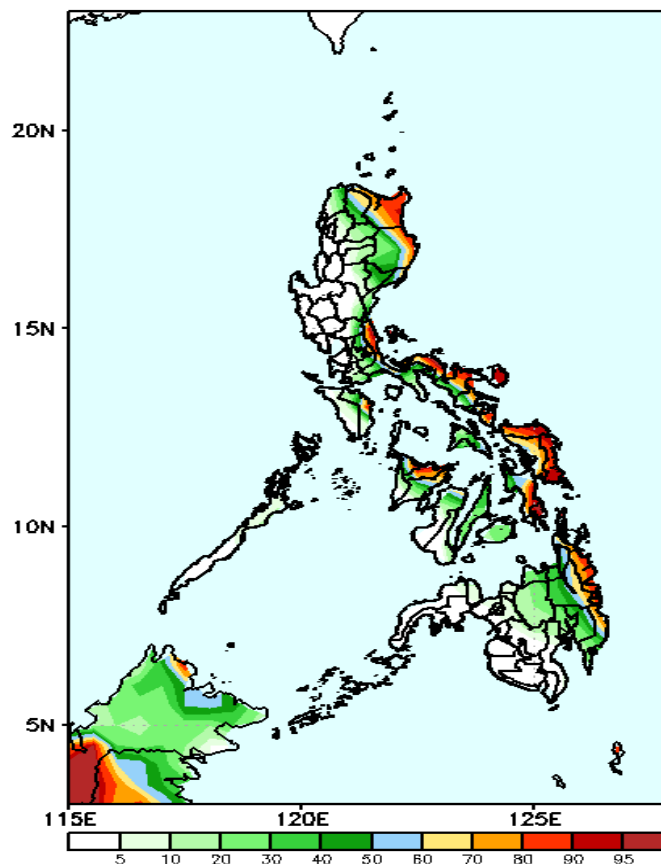
Week 1: Dec 11-17, 2023

GEFS Week-1 Precip. Anomaly
Valid: 20231211 - 20231217



Rainfall deficit of more than 100mm is expected in Cagayan, Isabela, and northern Mindanao including Zamboanga Peninsula and 40-80mm for the rest of the country.

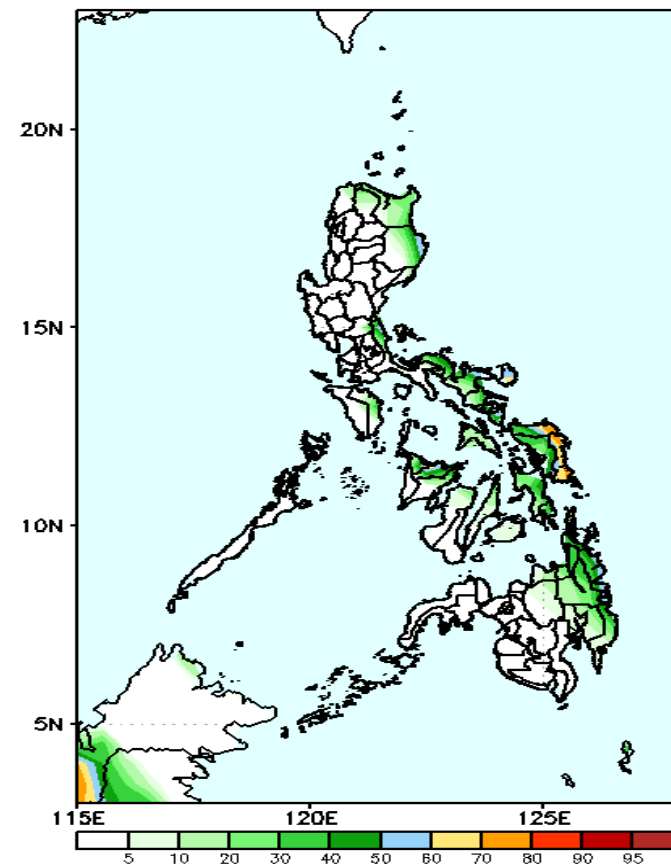
GEFS Week-1 Exceedance Prob. > 25mm
Valid: 20231211 - 20231217



Probability to Exceed 25mm

- High to very high over the eastern sections of Cagayan, Isabela and Bicol Region, northern Quezon and most parts of Eastern Visayas;
- Moderate to high over Apayao, the rest of Eastern Luzon and Bicol Region, Aklan, Capiz and Eastern Mindanao;
- Low to moderate over the rest of the country.

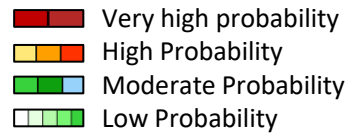
GEFS Week-1 Exceedance Prob. > 50mm
Valid: 20231211 - 20231217



Probability to Exceed 50mm

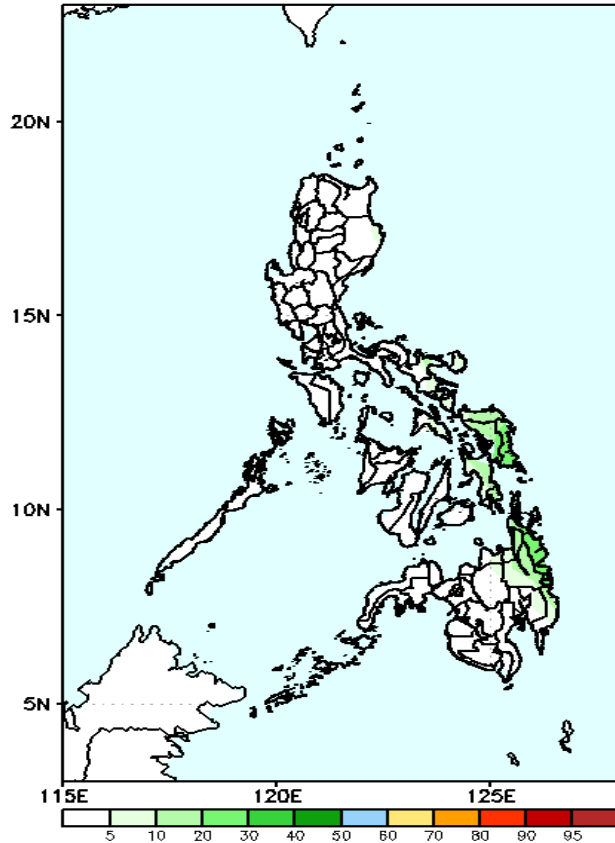
- Moderate to high over Catanduanes and Samar provinces;
- Low to moderate over eastern portion of Isabela, Catanduanes, Leyte provinces, Capiz and Eastern Mindanao;
- Low over the rest of the country.

Exceedance Probability > 100/150/200 mm



Week 1: Dec 11-17, 2023

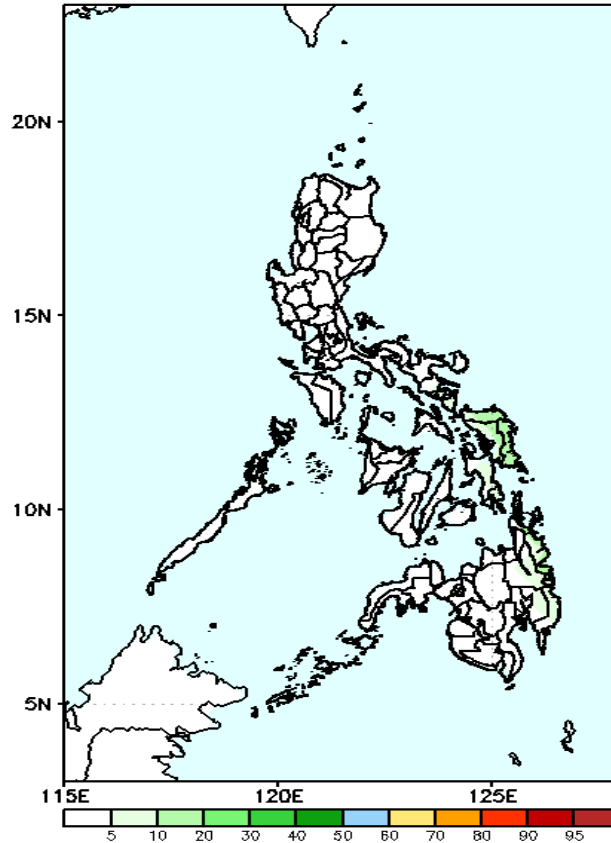
GEFS Week-1 Exceedance Prob. > 100mm
Valid: 20231211 - 20231217



Probability to Exceed 100mm

- Low over most parts of the country.

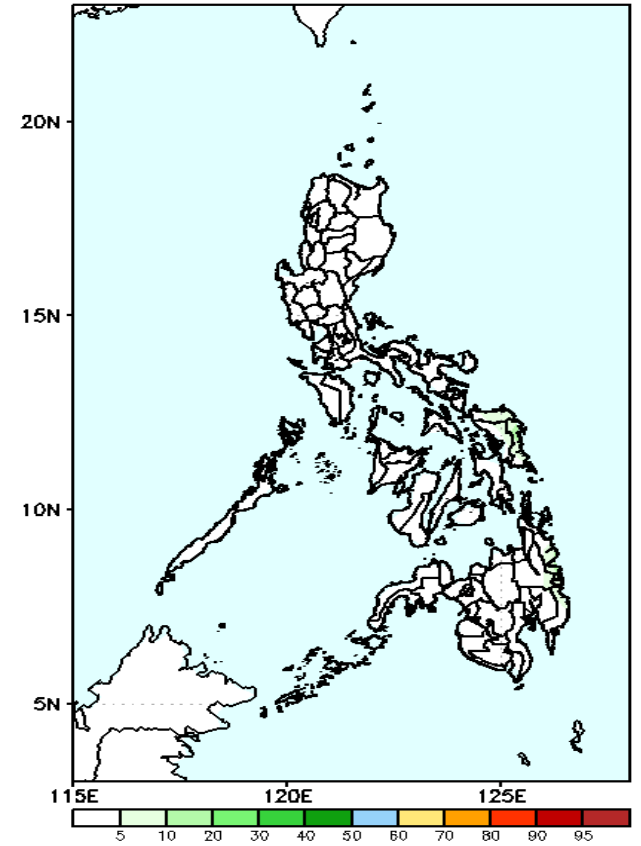
GEFS Week-1 Exceedance Prob. > 150mm
Valid: 20231211 - 20231217



Probability to Exceed 150mm

- Low over most parts of the country.

GEFS Week-1 Exceedance Prob. > 200mm
Valid: 20231211 - 20231217



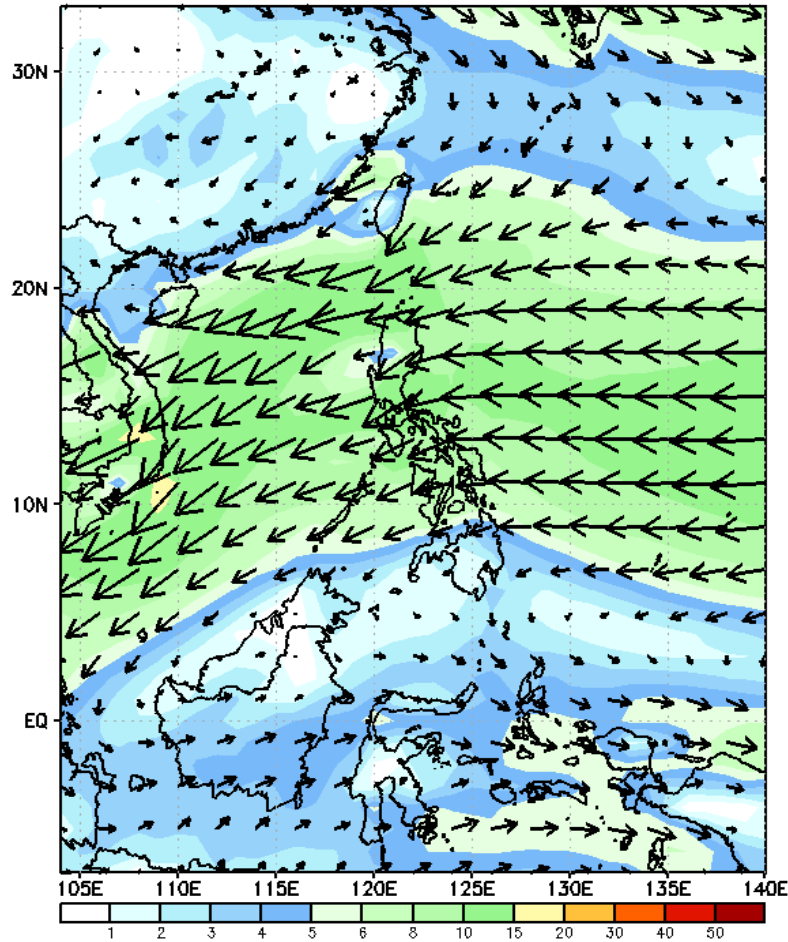
Probability to Exceed 200mm

- Low in most parts of the country.

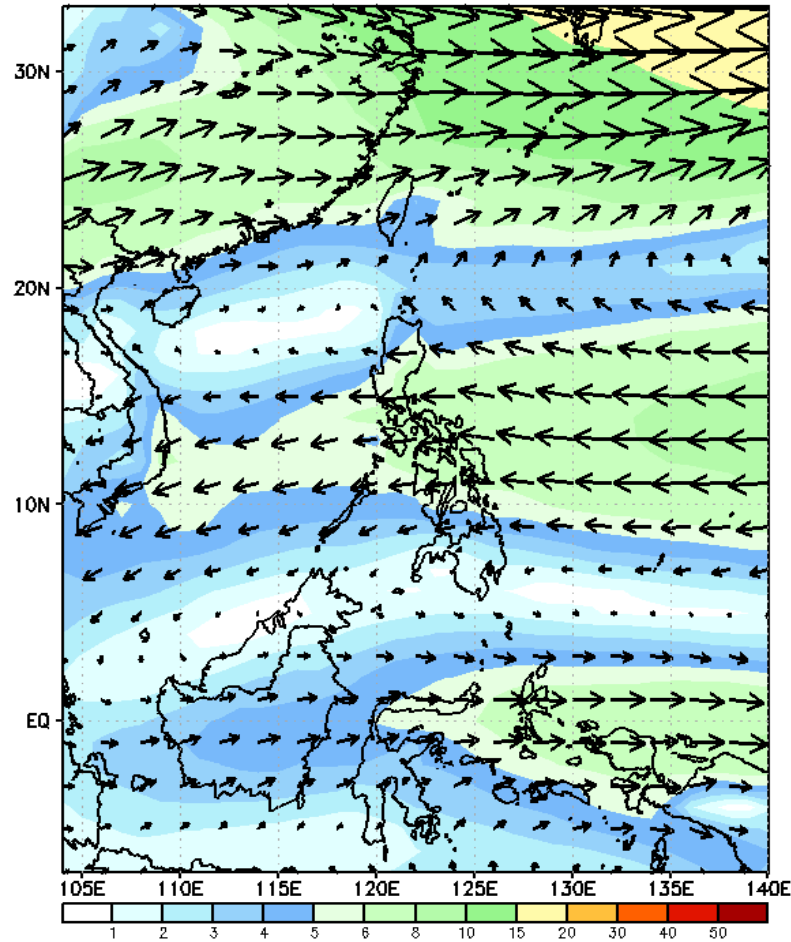
GEFS Week-2 Forecasts: Wind Forecast

Week 2: Dec 18-24, 2023

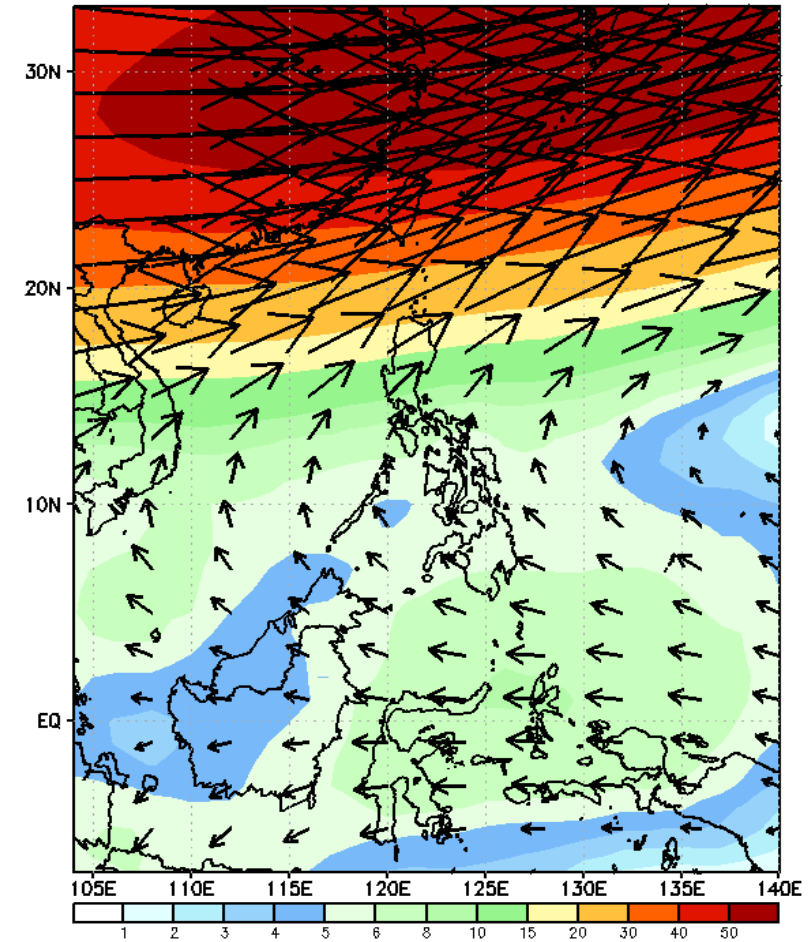
GEFS Week-2 850-hPa Wind Total
Valid: 20231218 - 20231224



GEFS Week-2 700-hPa Wind Total
Valid: 20231218 - 20231224



GEFS Week-2 200-hPa Wind Total
Valid: 20231218 - 20231224



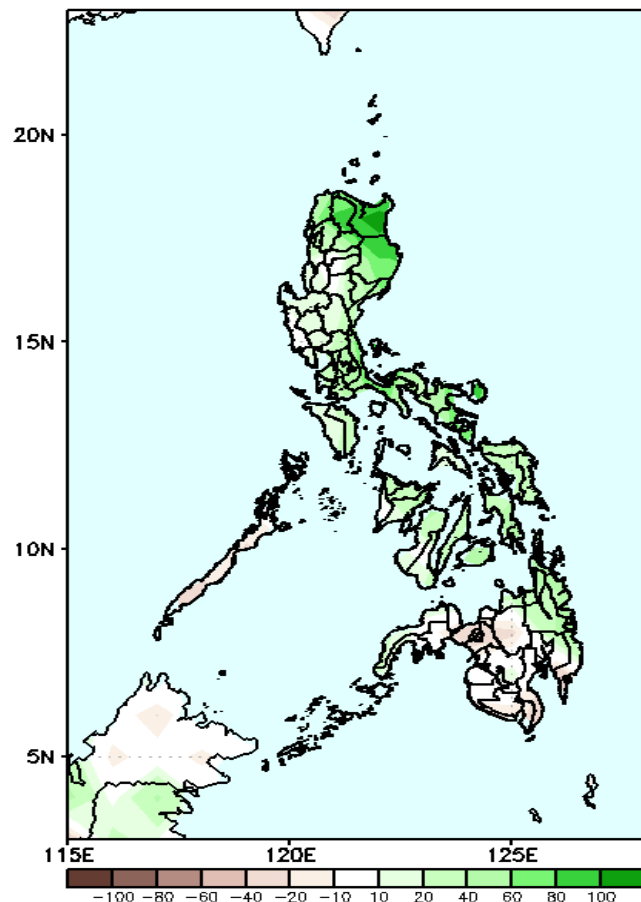
Northeast Monsoon affecting Northern Luzon. Easterlies affecting the rest of the country.

Precipitation Anomaly and Exceedance Probability > 25/50 mm



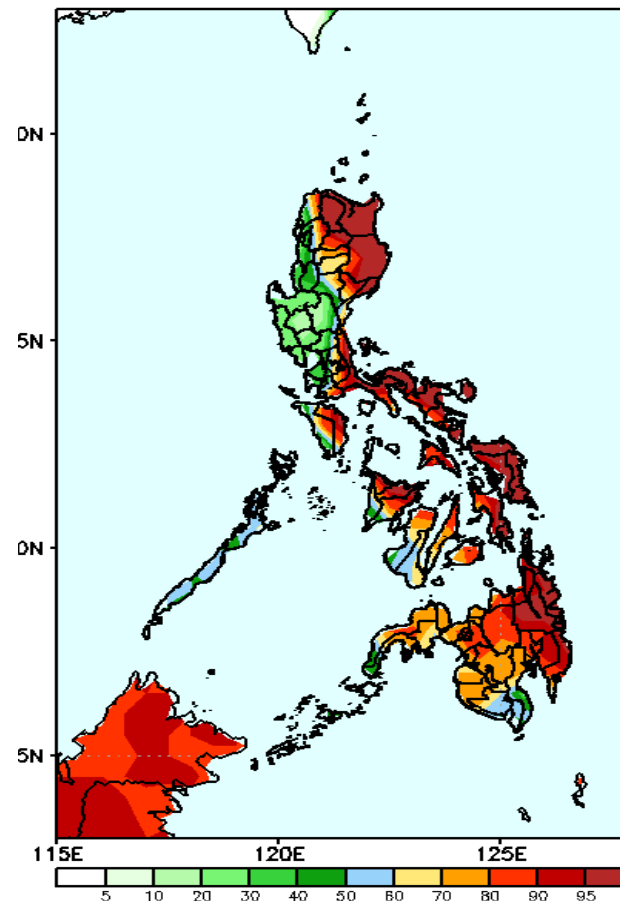
Week 2: Dec 18-24, 2023

GEFS Week-2 Precip Anomaly
Valid: 20231218 - 20231224



Increase of rainfall of Rainfall deficit of 20-100mm is expected in most parts of the country.

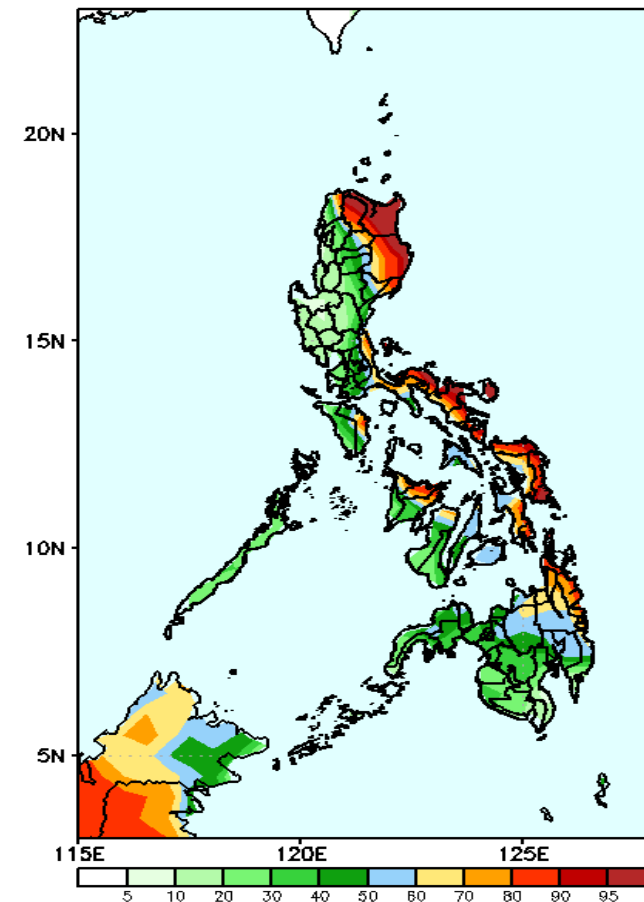
GEFS Week-2 Exceedance Prob. > 25mm
Valid: 20231218 - 20231224



Probability to Exceed 25mm

- High to very high over Aparri, Apayao, Cagayan, Isabela, eastern section of Bicol Region and Northern and Eastern Samar;
- Moderate to high over the rest of CAR, Bicol region and Eastern Visayas, northern part of Western Visayas and Eastern Mindanao;
- Low to moderate elsewhere.

GEFS Week-2 Exceedance Prob. > 50mm
Valid: 20231218 - 20231224



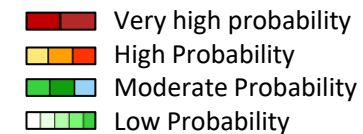
Probability to Exceed 50mm

- Moderate to high over Apayao, Cagayan, eastern section of Isabela and Bicol Region
- Low to moderate elsewhere.

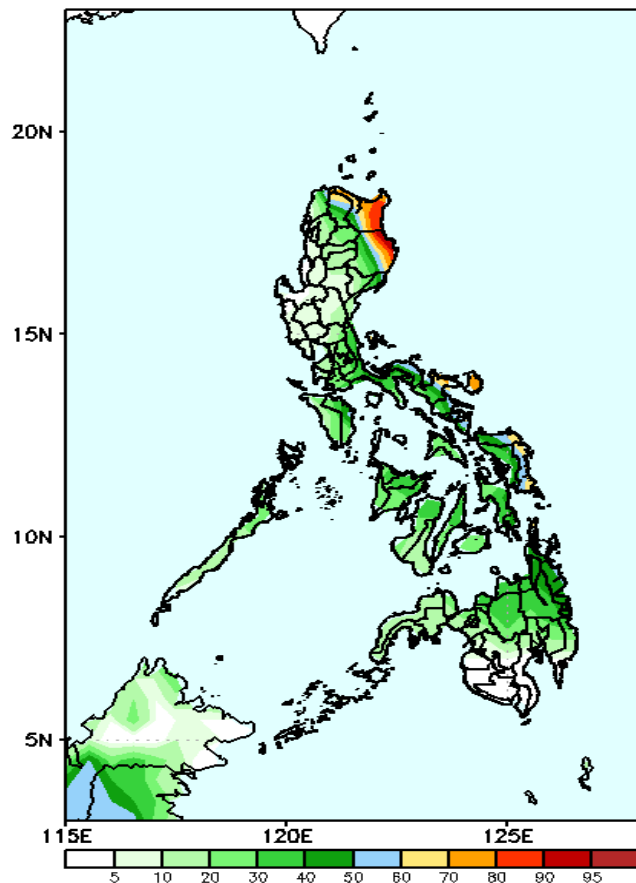


Exceedance Probability > 100/150/200 mm

Week 2: Dec 18-24, 2023



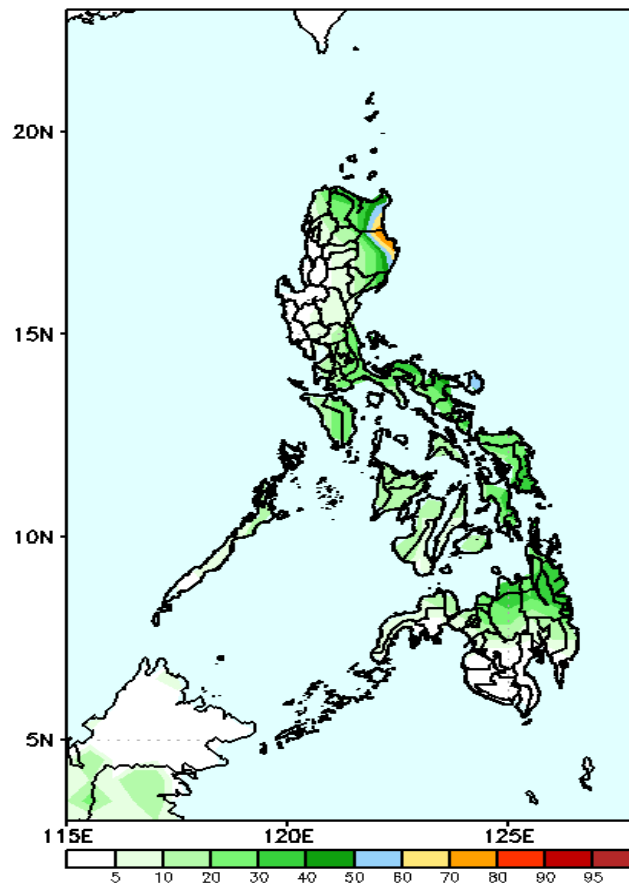
GEFS Week-2 Exceedance Prob. > 100mm
Valid: 20231218 - 20231224



Probability to Exceed 100mm

- Moderate to high over the eastern section of Cagayan and Isabela;
- Low to moderate elsewhere.

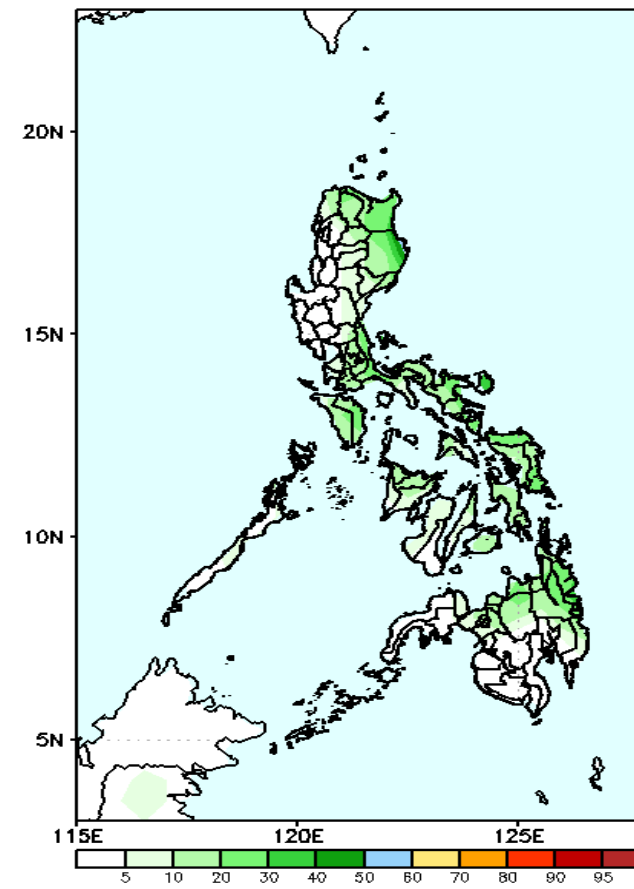
GEFS Week-2 Exceedance Prob. > 150mm
Valid: 20231218 - 20231224



Probability to Exceed 150mm

- Moderate to high over the eastern section of Cagayan and Isabela;
- Low to moderate elsewhere.

GEFS Week-2 Exceedance Prob. > 200mm
Valid: 20231218 - 20231224

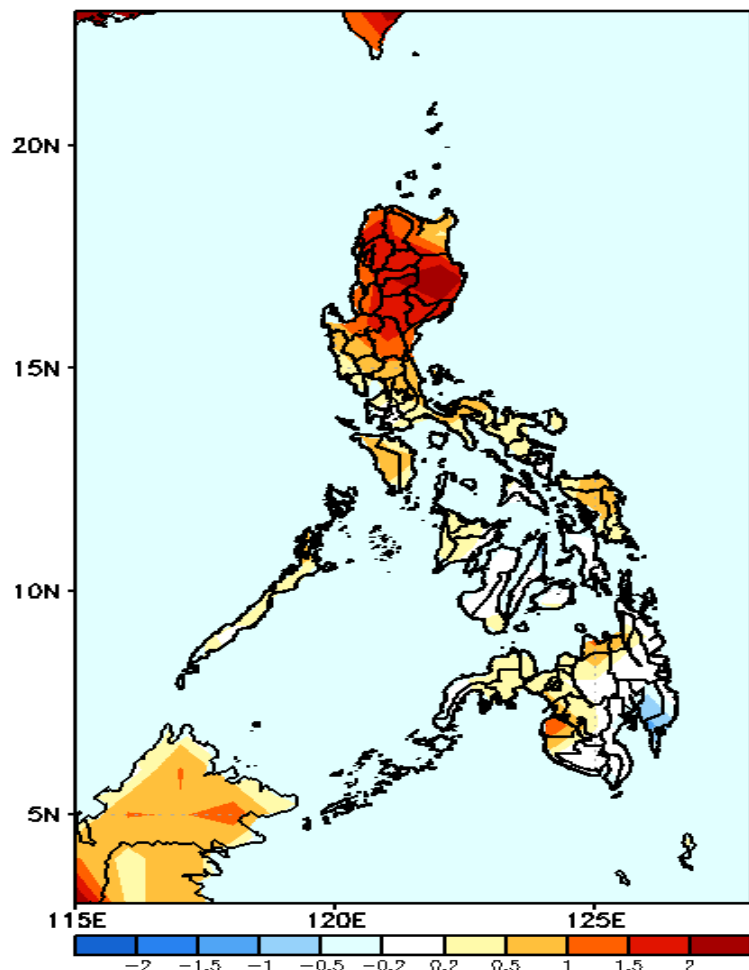


Probability to Exceed 200mm

- Low in most parts of the country.

GEFS Week-1 & 2 Forecasts: T2m Anomaly

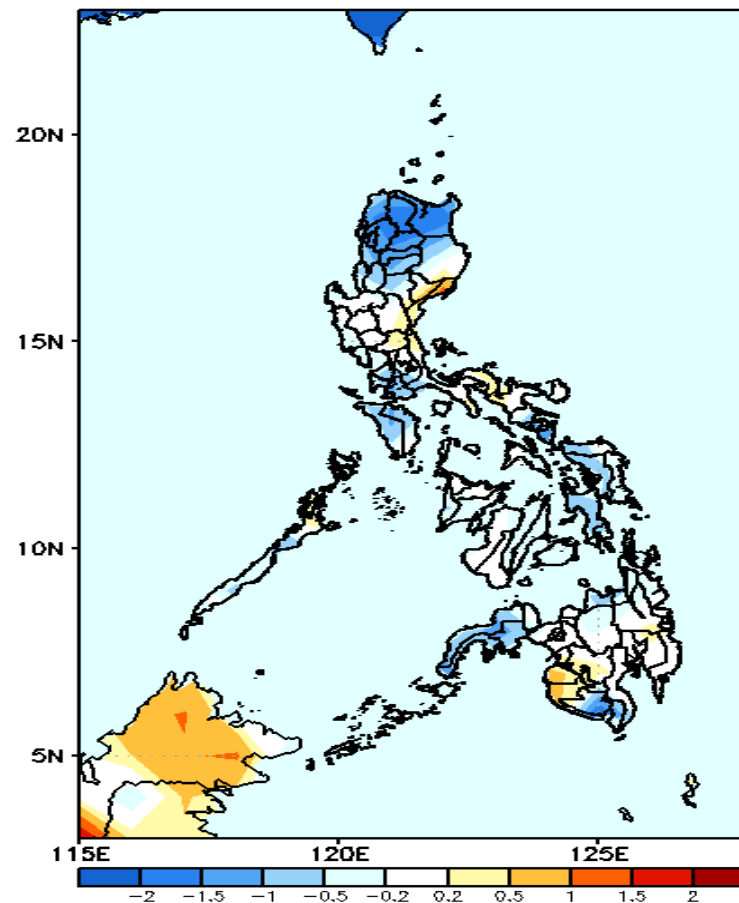
GEFS Week-1 T2m Anomaly
Valid: 20231211 – 20231217



2m Temperature Week 1: Dec 11-17, 2023

Warmer than average surface air temperature will likely be experienced in most parts of the country except in Davao Region where slightly cooler than average temperature is expected.

GEFS Week-2 T2m Anomaly
Valid: 20231218 – 20231224



2m Temperature Week 2: Dec 18-24, 2023

Near average to cooler than average surface air temperature will likely be experienced in most parts of the country except in some areas in eastern Luzon, Maguindanao and Sultan Kudarat where slightly warmer than average surface air temperature is expected.