



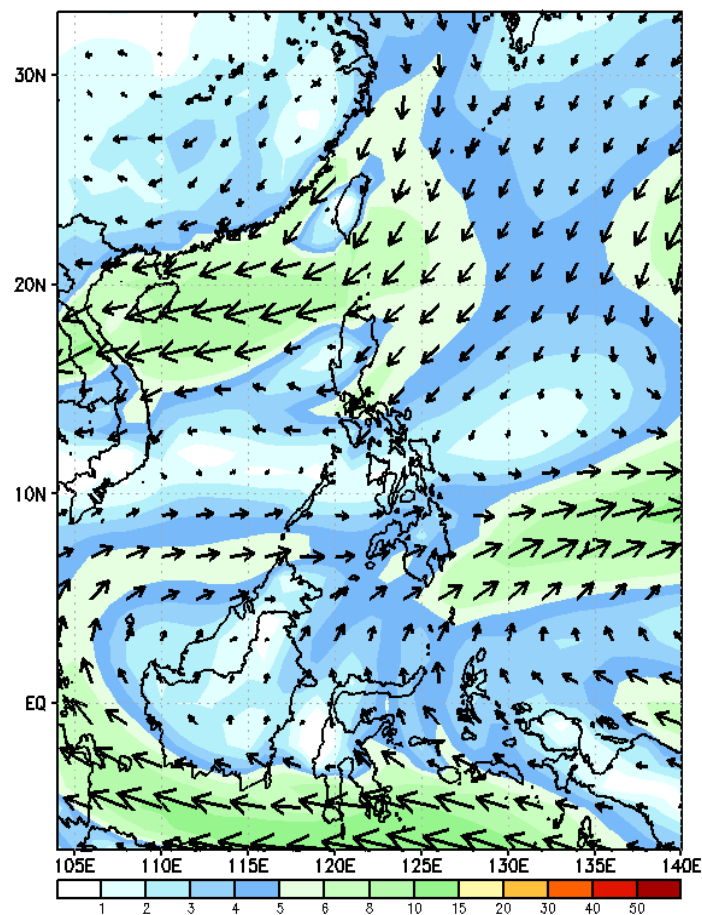
# Week 1 & Week 2 Forecast for the Philippines using GEFS Model



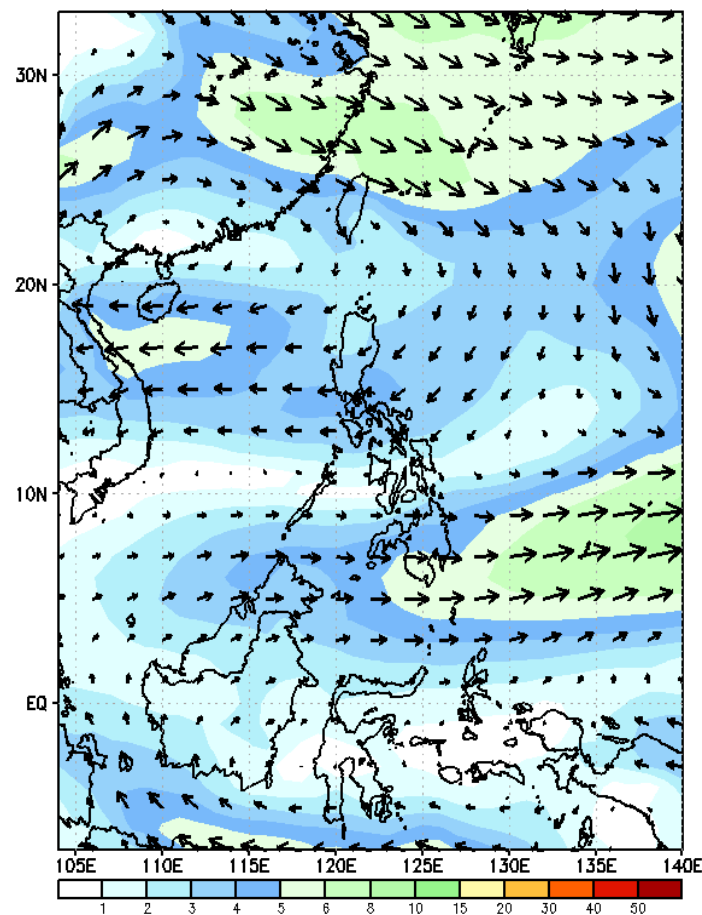
# GEFS Week-1 Forecasts: Wind Forecast

Week 1: Oct 11 - 17, 2023

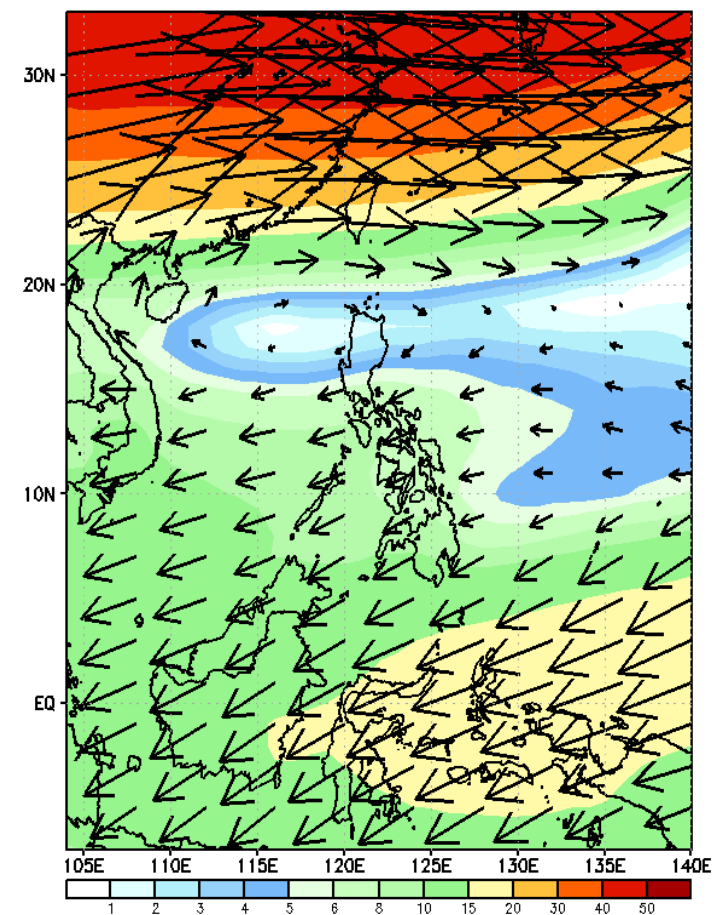
GEFS Week-1 850-hPa Wind Total  
Valid: 20231011 - 20231017



GEFS Week-1 700-hPa Wind Total  
Valid: 20231011 - 20231017



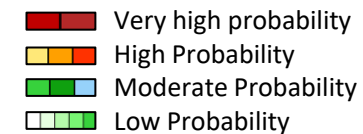
GEFS Week-1 200-hPa Wind Total  
Valid: 20231011 - 20231017



Northeasterly windflow affecting Luzon and Visayas while westerly to southwesterly windflow affecting Mindanao.

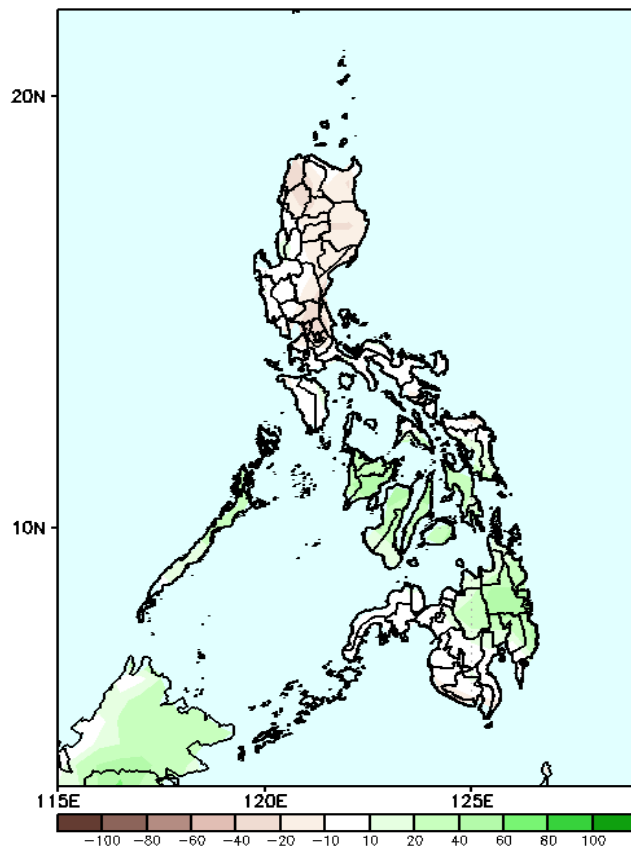


# Precipitation Anomaly and Exceedance Probability > 25/50 mm



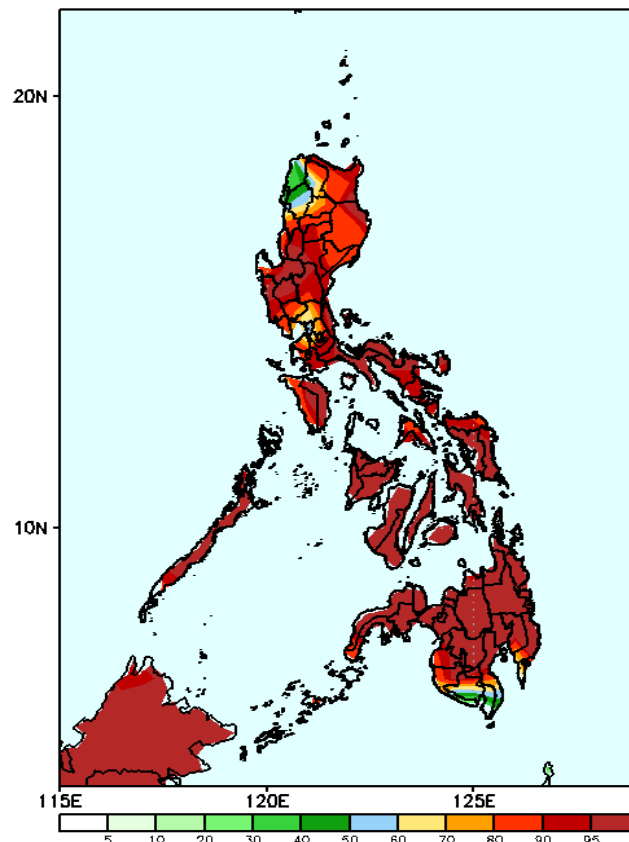
Week 1: Oct 11 - 17, 2023

GEFS Week-1 Precip Anomaly  
Valid: 20231011 - 20231017



Rainfall deficit of 20-60mm is expected in most parts of Luzon while 20-60mm increase of rainfall in most parts of Visayas and Mindanao.

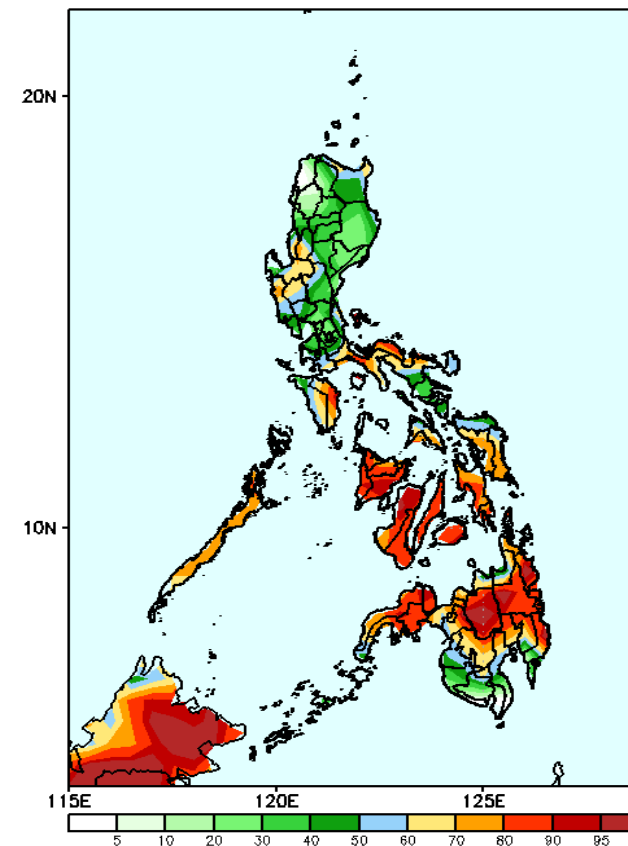
GEFS Week-1 Exceedance Prob. > 25mm  
Valid: 20231011 - 20231017



## Probability to Exceed 25mm

- High to very high in most parts of the country.
- Moderate to high in NCR, Ilocos Norte, Abra, South Cotabato, Sarangani, and Davao Occidental.

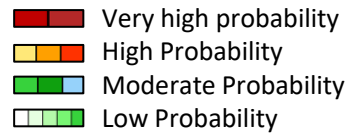
GEFS Week-1 Exceedance Prob. > 50mm  
Valid: 20231011 - 20231017



## Probability to Exceed 50mm

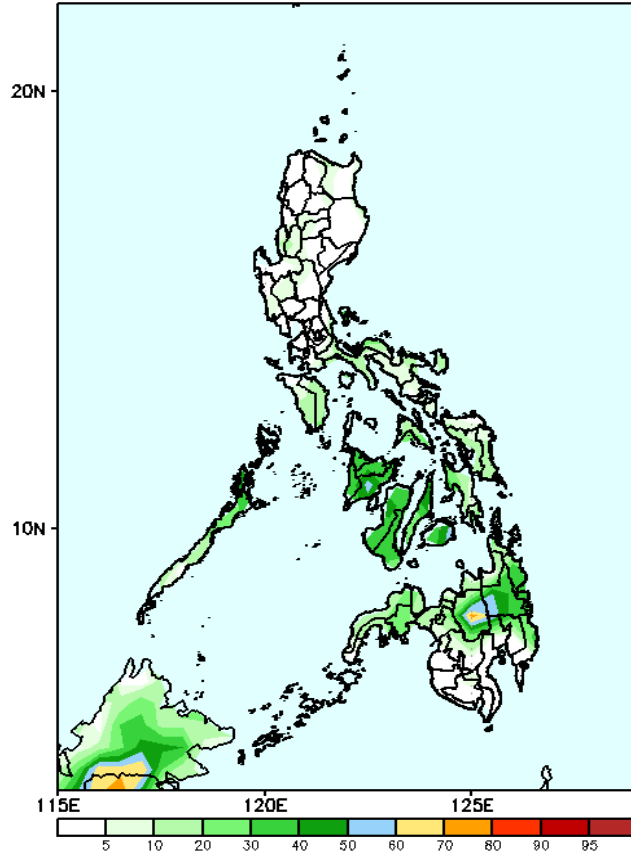
- High to very high over Northern Mindanao, Caraga, most of Zamboanga Peninsula, and Western and Central Visayas
- Moderate to high over Southern Luzon, Eastern Visayas, most of Davao Region, La Union, Pangasinan and Central Luzon;
- Low to moderate over the rest of Luzon and Mindanao.

# Exceedance Probability > 100/150/200 mm



Week 1: Oct 11 - 17, 2023

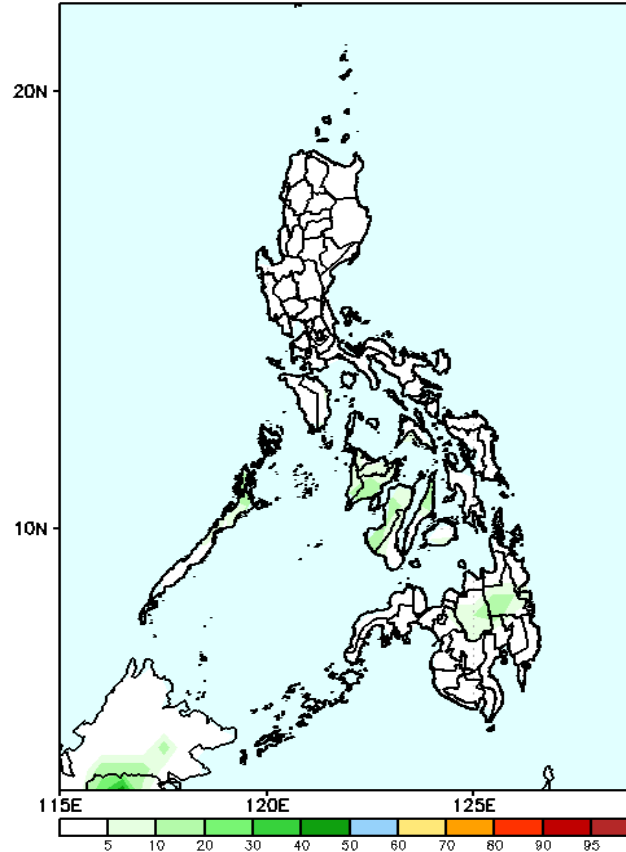
GEFS Week-1 Exceedance Prob. > 100mm  
Valid: 20231011 - 20231017



## Probability to Exceed 100mm

- Moderate to high in Bukidnon, Agusan del Sur, and Western and Central Visayas
- Low over the rest of the country.

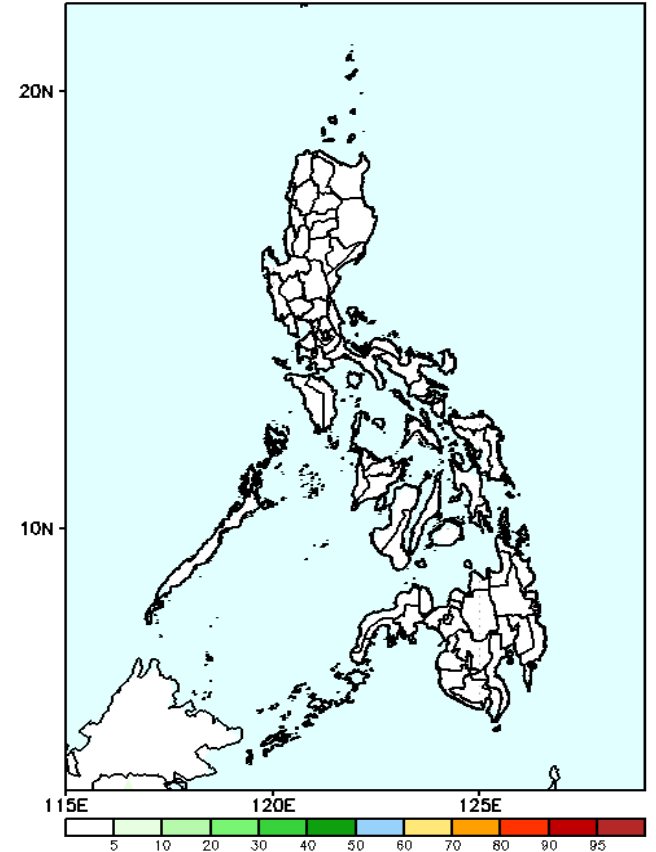
GEFS Week-1 Exceedance Prob. > 150mm  
Valid: 20231011 - 20231017



## Probability to Exceed 150mm

- Low in most parts of the country.

GEFS Week-1 Exceedance Prob. > 200mm  
Valid: 20231011 - 20231017



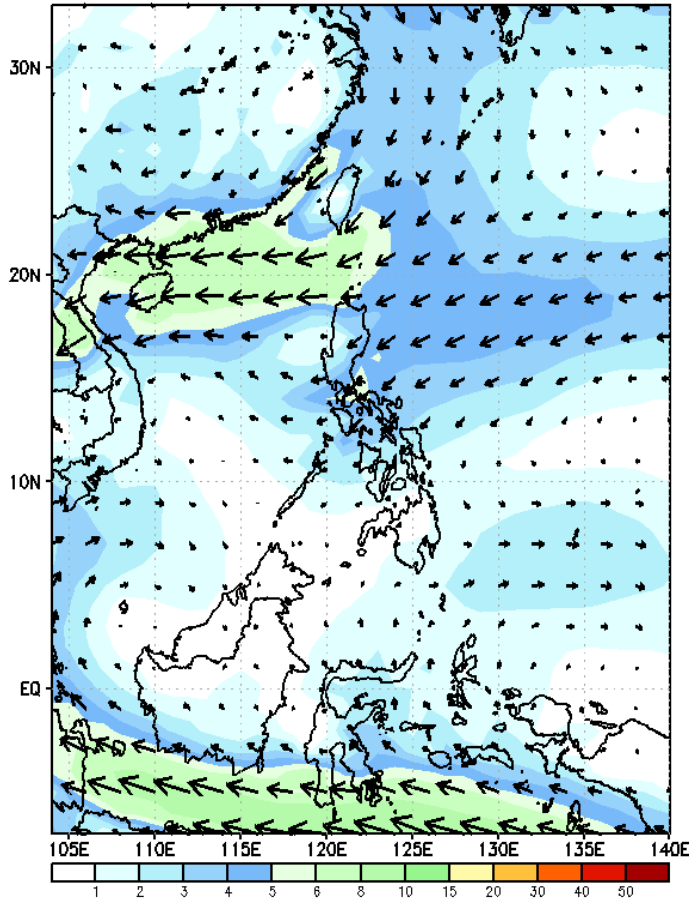
## Probability to Exceed 200mm

- Low in most parts of the country.

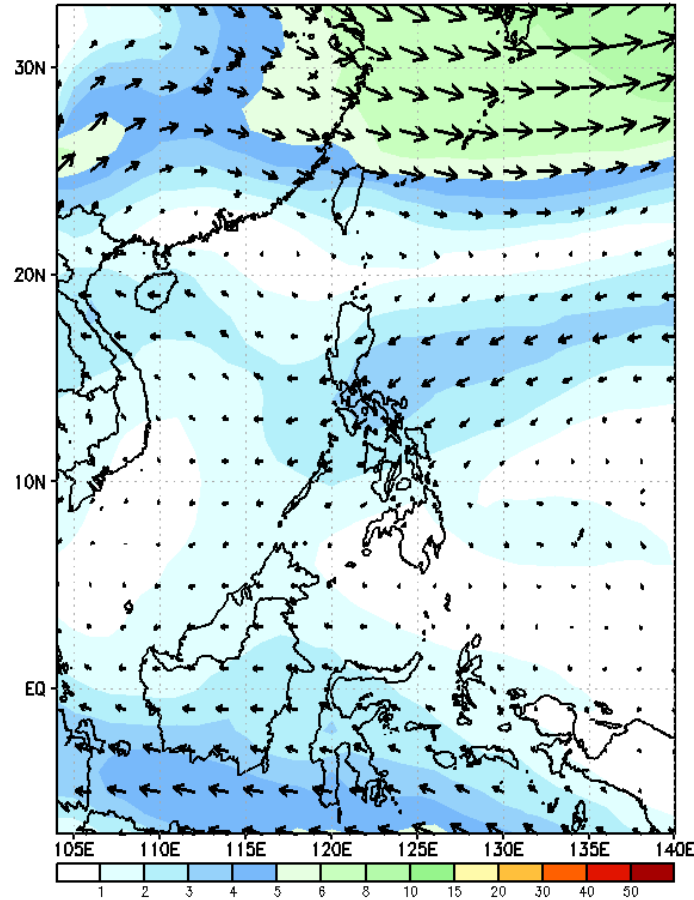
# GEFS Week-2 Forecasts: Wind Forecast

Week 2: Oct 18 - 24, 2023

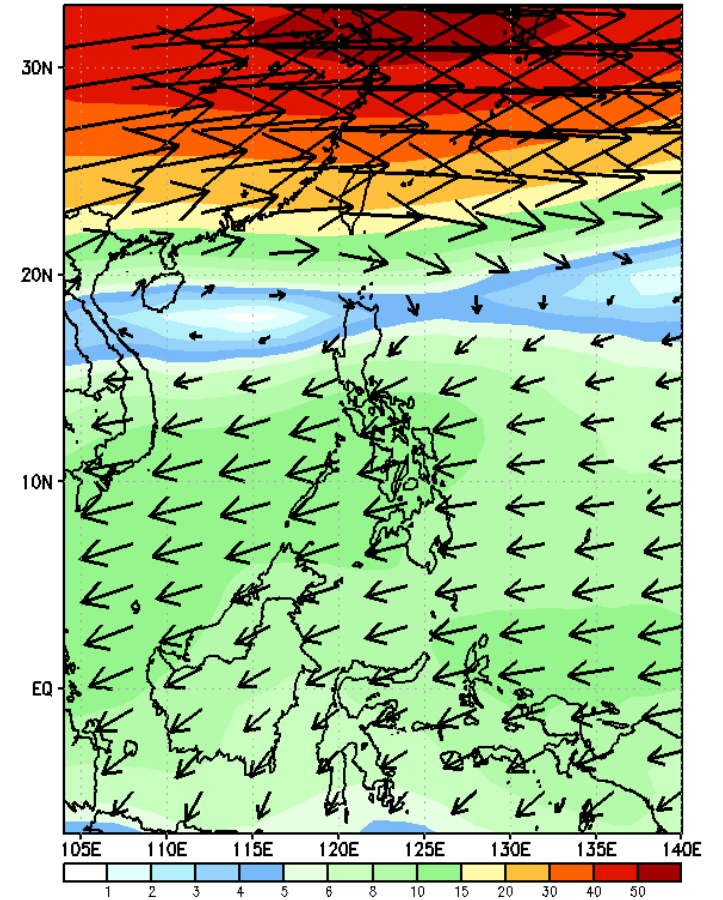
GEFS Week-2 850-hPa Wind Total  
Valid: 20231018 - 20231024



GEFS Week-2 700-hPa Wind Total  
Valid: 20231018 - 20231024



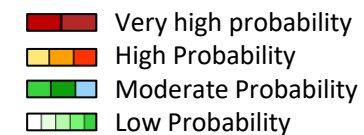
GEFS Week-2 200-hPa Wind Total  
Valid: 20231018 - 20231024



Northeasterly windflow affecting Extreme Northern Luzon, Easterlies affecting the rest of Luzon and most of Visayas while westerly windflow affecting Mindanao.

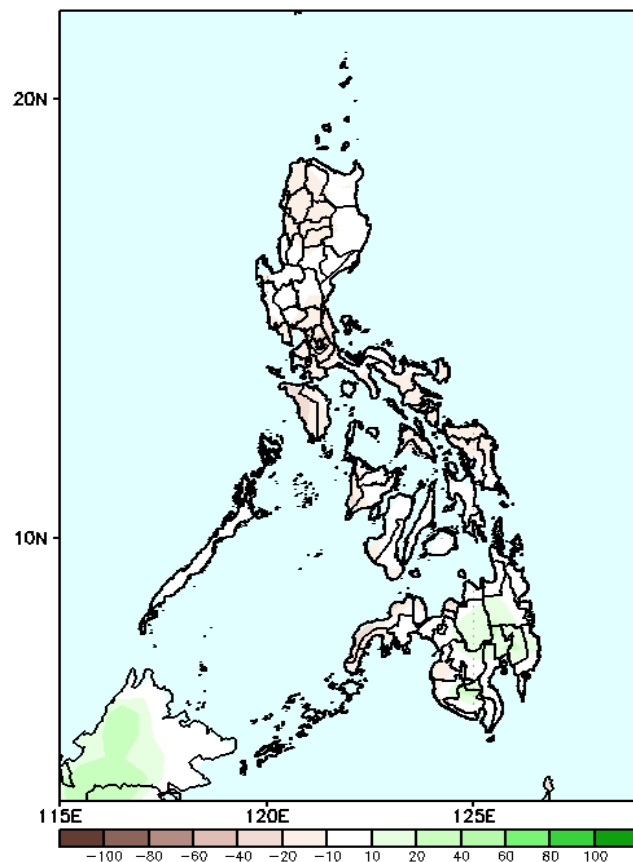


# Precipitation Anomaly and Exceedance Probability > 25/50 mm



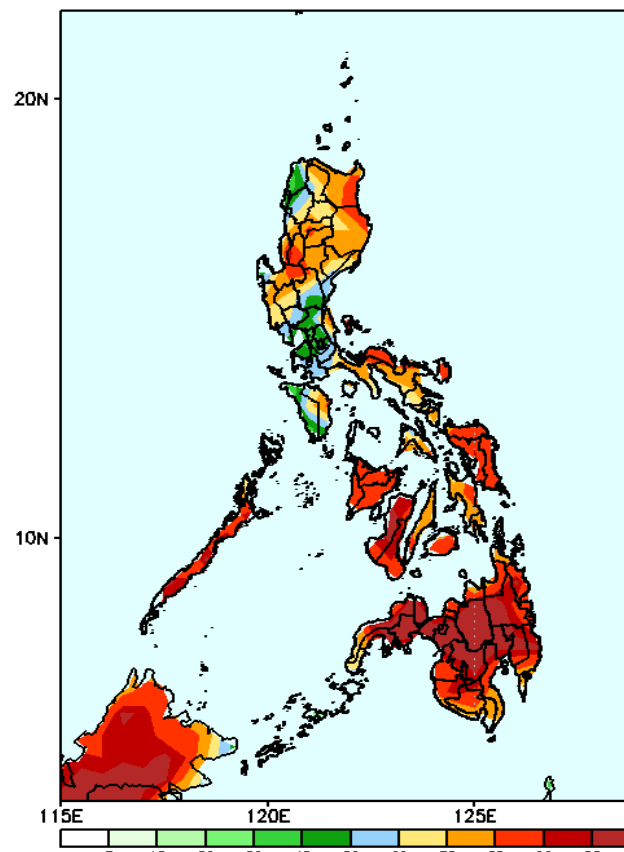
Week 2: Oct 18 - 24, 2023

GEFS Week-2 Precip Anomaly  
Valid: 20231018 - 20231024



Rainfall deficit of 10-20mm will be likely in most parts of the country except in Bukidnon, Davao region and South Cotabato where 10-20mm increase of rainfall is expected.

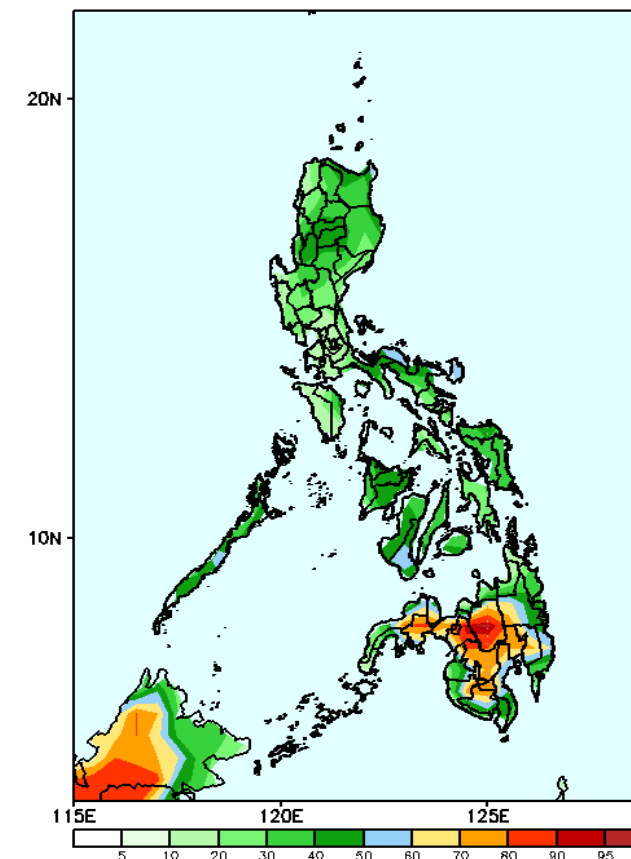
GEFS Week-2 Exceedance Prob. > 25mm  
Valid: 20231018 - 20231024



## Probability to Exceed 25mm

- High to very high over Visayas and Mindanao;
- Moderate to high in Luzon.

GEFS Week-2 Exceedance Prob. > 50mm  
Valid: 20231018 - 20231024



## Probability to Exceed 50mm

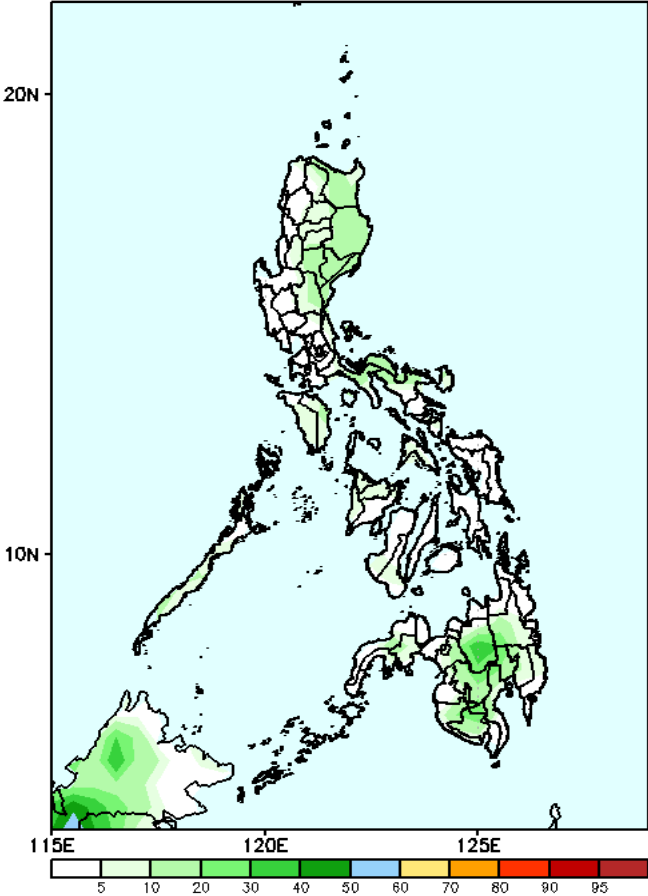
- Moderate to high over Mindanao;
- Low to moderate over Luzon and Visayas.

# Exceedance Probability > 100/150/200 mm

Week 2: Oct 18 - 24, 2023

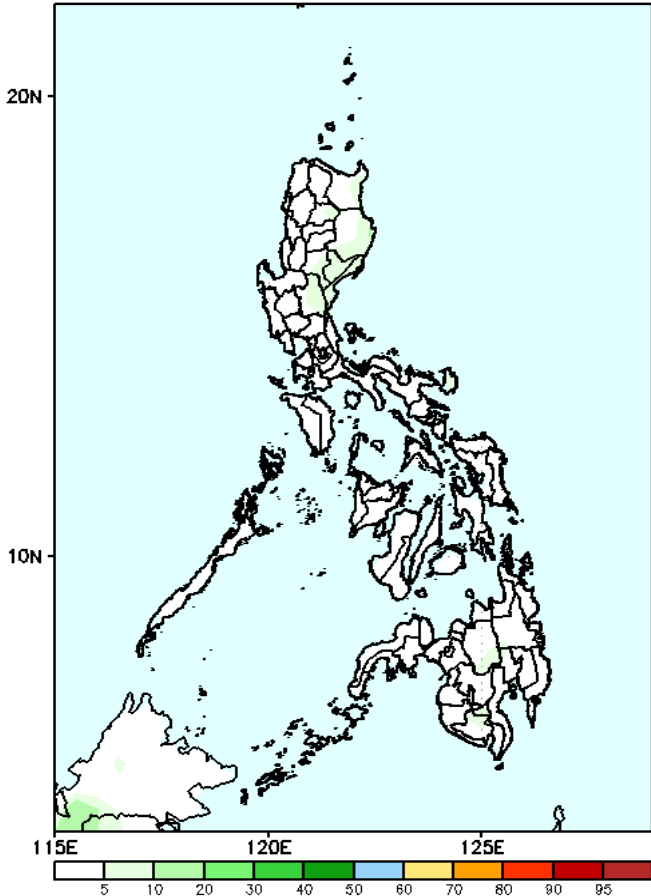
- Very high probability
- High Probability
- Moderate Probability
- Low Probability

GEFS Week-2 Exceedance Prob. > 100mm  
Valid: 20231018 - 20231024



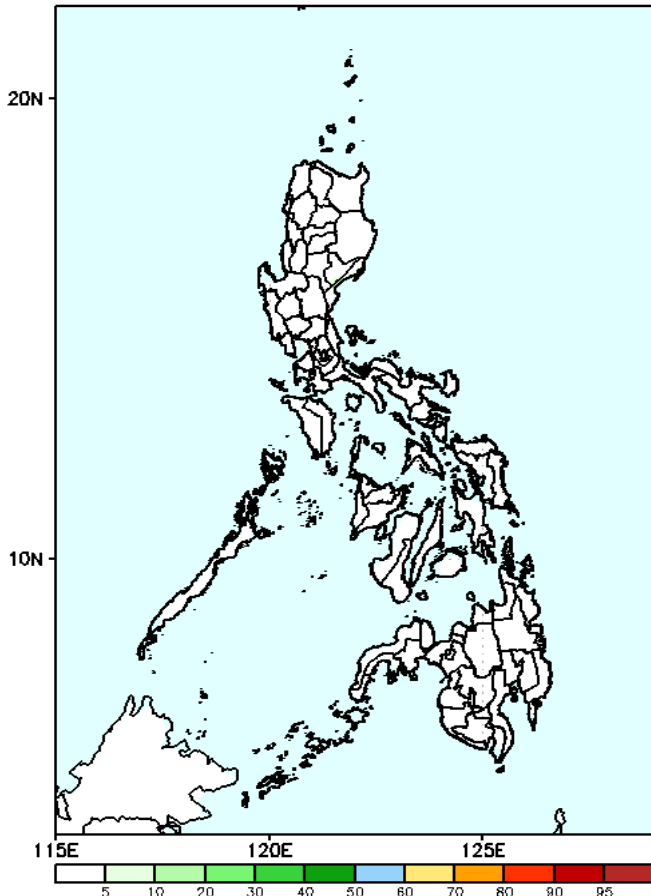
**Probability to Exceed 100mm**  
• Low in most parts of the country.

GEFS Week-2 Exceedance Prob. > 150mm  
Valid: 20231018 - 20231024



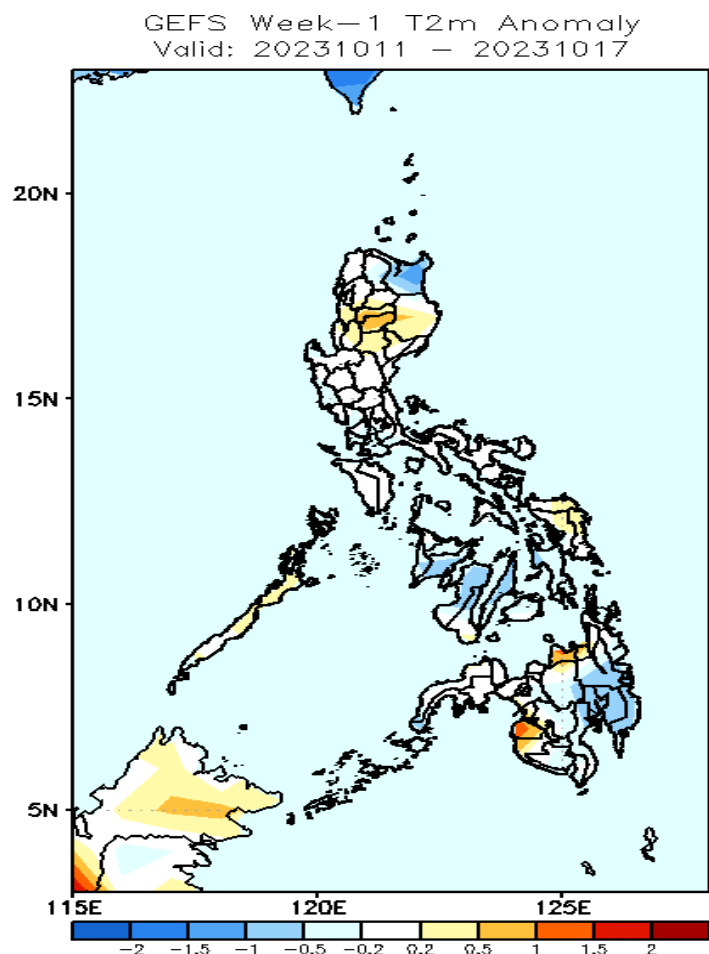
**Probability to Exceed 150mm**  
• Low in most parts of the country.

GEFS Week-2 Exceedance Prob. > 200mm  
Valid: 20231018 - 20231024



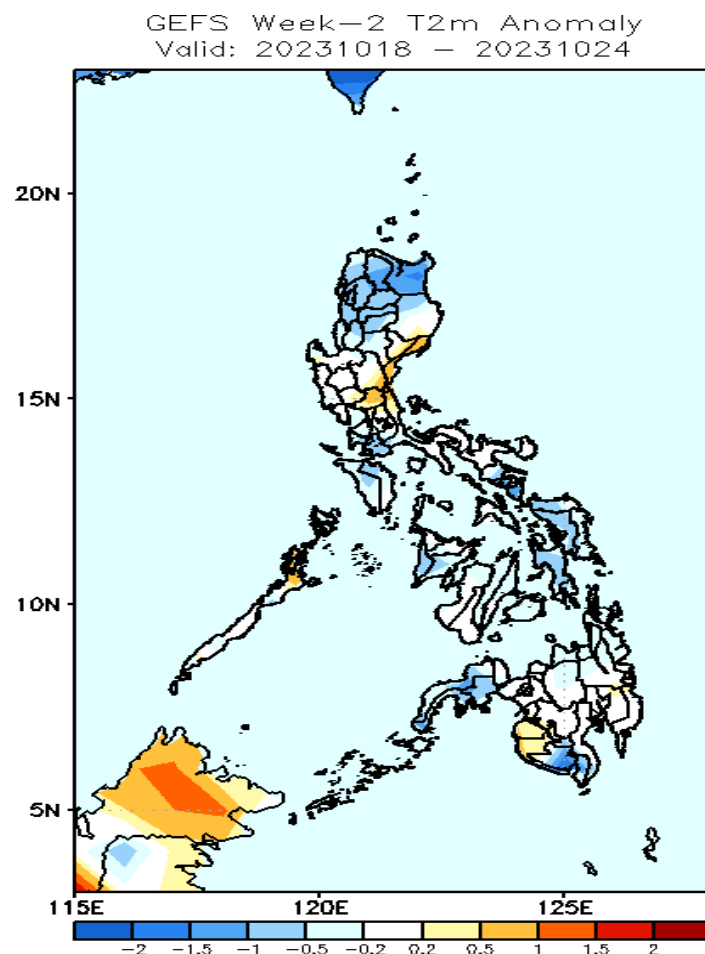
**Probability to Exceed 200mm**  
• Low in most parts of the country.

# GEFS Week-1 & 2 Forecasts: T2m Anomaly



## 2m Temperature Week 1: Oct 11 - 17, 2023

Average to cooler than average surface air temperature will likely experience in most parts of Northern Luzon, Palawan, Samar provinces, Misamis Oriental, Maguindanao and Sultan Kudarat where slightly warmer to warmer temperature is expected.



## 2m Temperature Week 2: Oct 18 - 24, 2023

Average to cooler than average surface air temperature will likely experience in most parts of the country except in Aurora, Bulacan, Maguindanao and Sultan Kudarat where slightly warmer temperature is expected.