



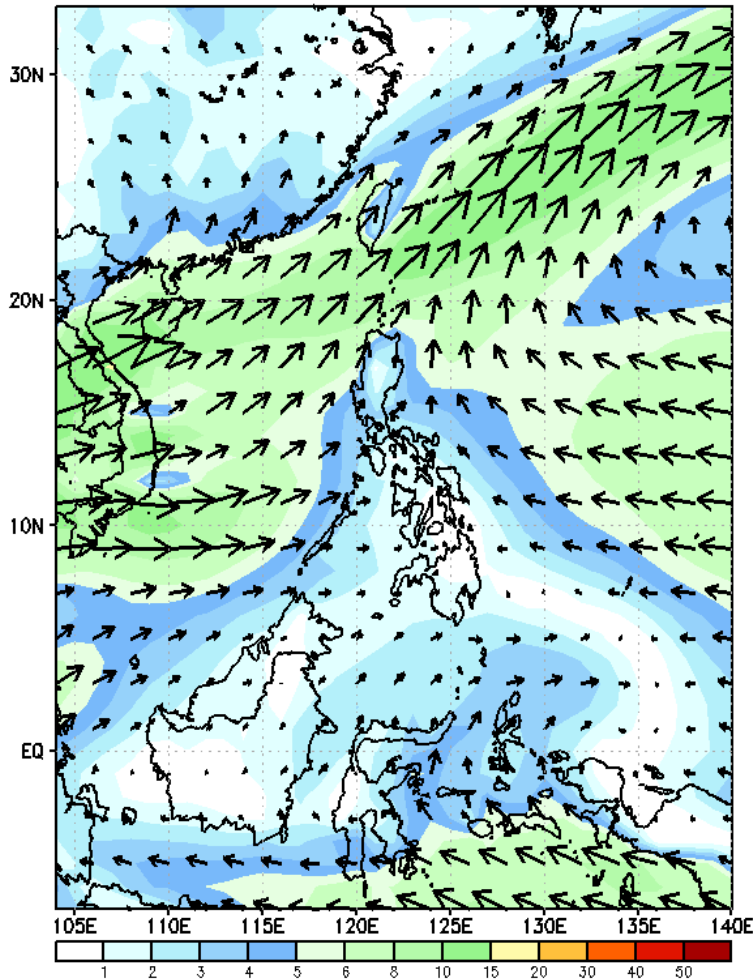
Week 1 & Week 2 Forecast for the Philippines using GEFS Model



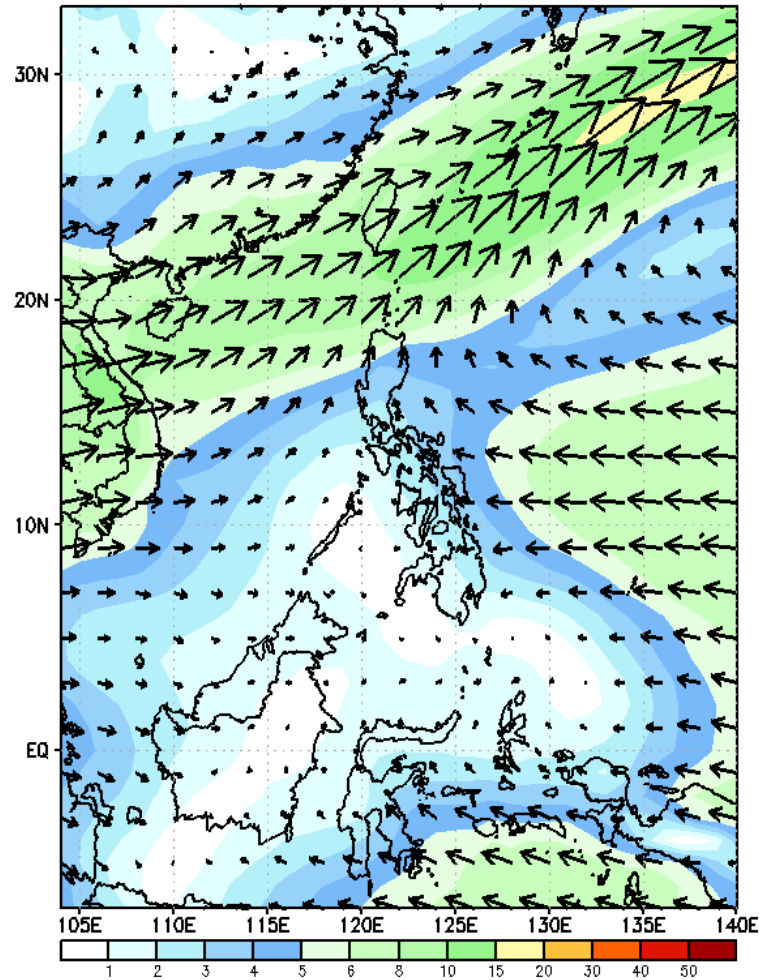
GEFS Week-1 Forecasts: Wind Forecast

Week 1: June 13-19, 2023

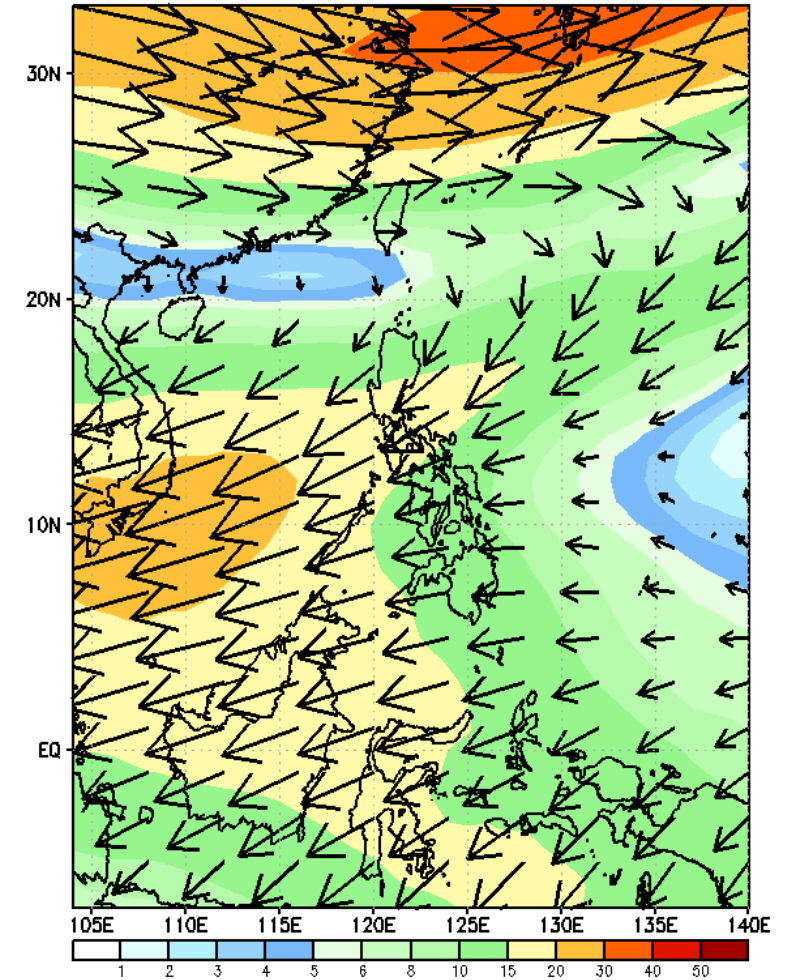
GEFS Week-1 850-hPa Wind Total
Valid: 20230613 - 20230619



GEFS Week-1 700-hPa Wind Total
Valid: 20230613 - 20230619

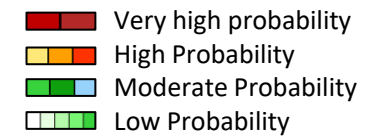


GEFS Week-1 200-hPa Wind Total
Valid: 20230613 - 20230619



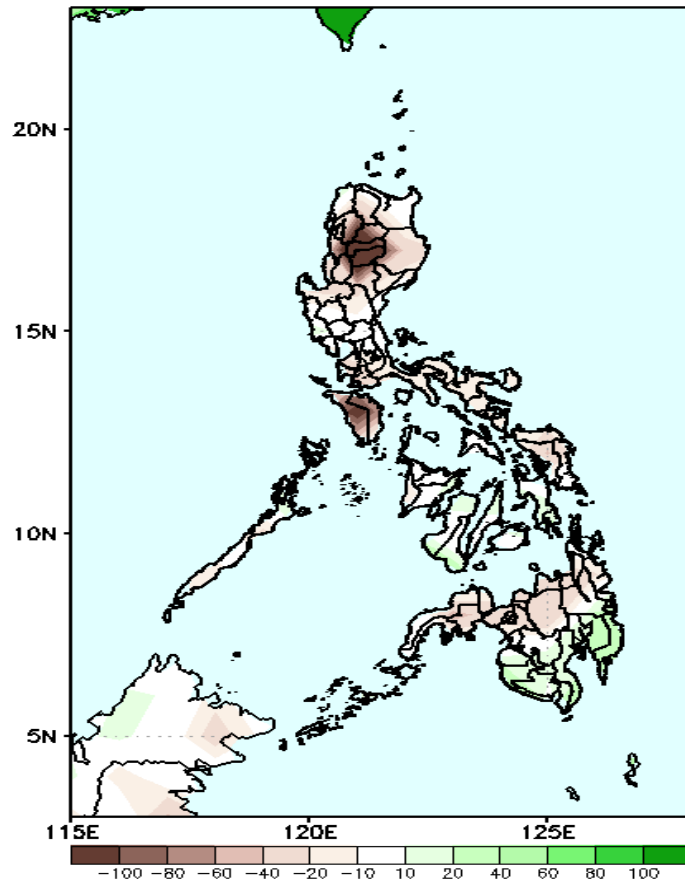
Southwest Monsoon is forecasted to prevail in the eastern section of Luzon and Visayas while Easterlies is forecasted to affect the remaining parts of the country.

Precipitation Anomaly and Exceedance Probability > 25/50 mm



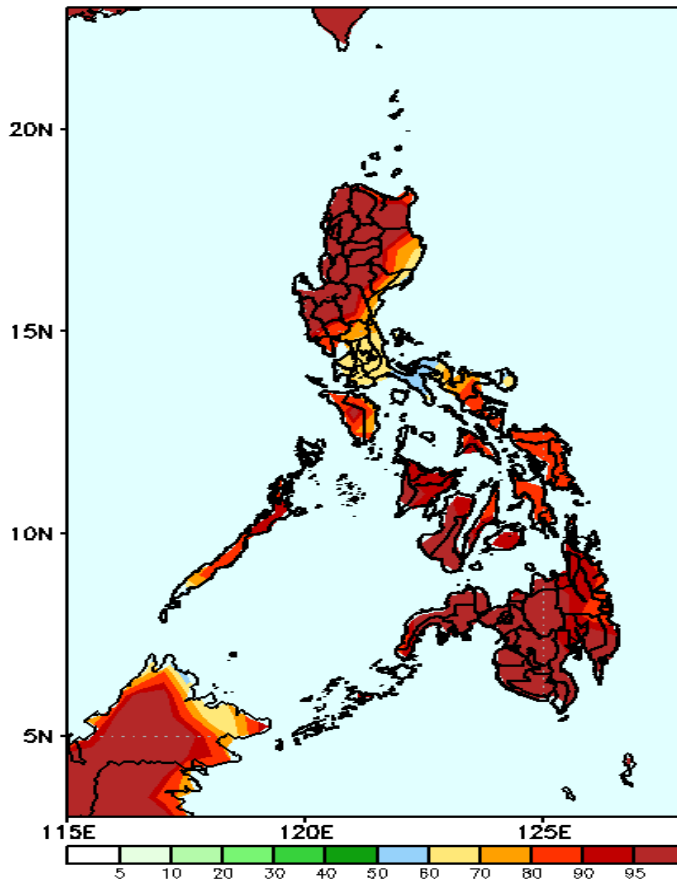
Week 1: June 13-19, 2023

GEFS Week-1 Precip Anomaly
Valid: 20230613 - 20230619



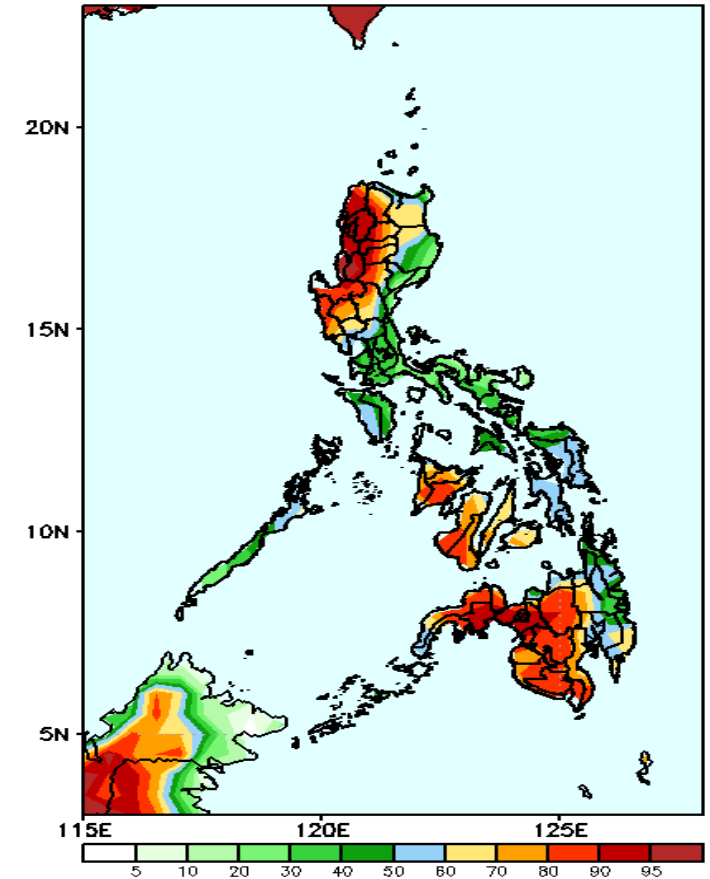
Rainfall deficit of more than 100mm is expected in Kalinga, Mt. Province, Ifugao and Mindoro; 20-40mm in most parts of the country except in southern Mindanao where there is 20-40mm increase of rainfall.

GEFS Week-1 Exceedance Prob. > 25mm
Valid: 20230613 - 20230619



High to a very high probability to exceed 25mm of rainfall in most parts of the country.

GEFS Week-1 Exceedance Prob. > 50mm
Valid: 20230613 - 20230619



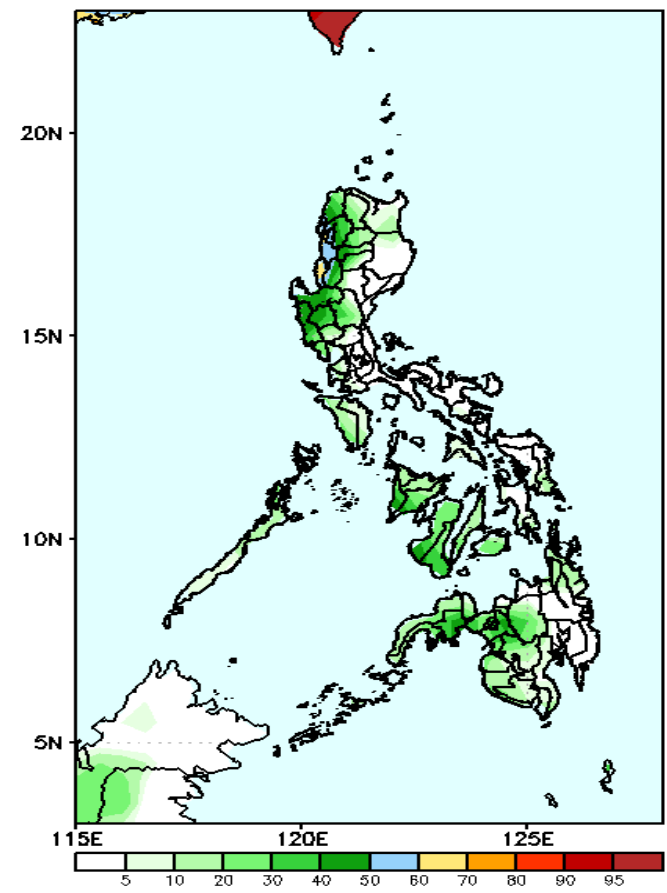
High to a very high probability to exceed 50mm of rainfall in most parts of Central and Northern Luzon, Western Visayas and Mindanao while moderate to high likelihood over the rest of the country.

Exceedance Probability > 100/150/200 mm

Week 1: June 13-19, 2023

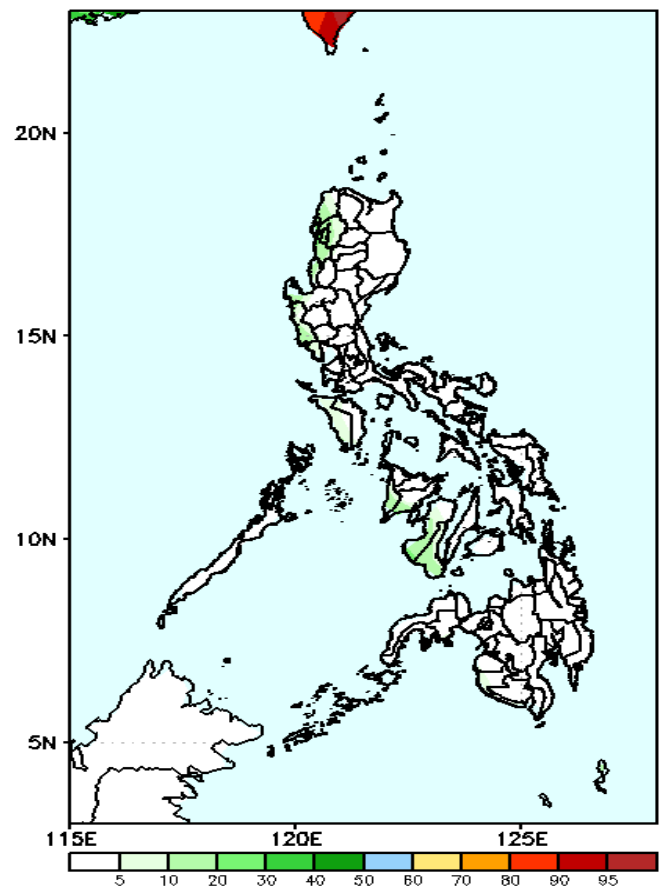
- Very high probability
- High Probability
- Moderate Probability
- Low Probability

GEFS Week-1 Exceedance Prob. > 100mm
Valid: 20230613 - 20230619



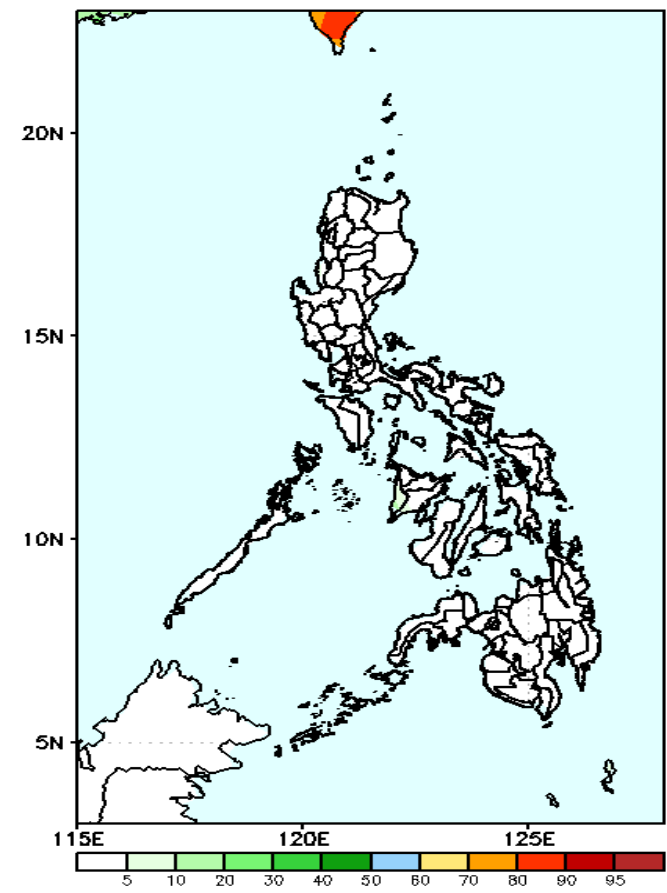
Low to moderate probability to exceed 100mm of rainfall in most parts of the country.

GEFS Week-1 Exceedance Prob. > 150mm
Valid: 20230613 - 20230619



Low probability to exceed 150mm of rainfall over the rest of the country.

GEFS Week-1 Exceedance Prob. > 200mm
Valid: 20230613 - 20230619

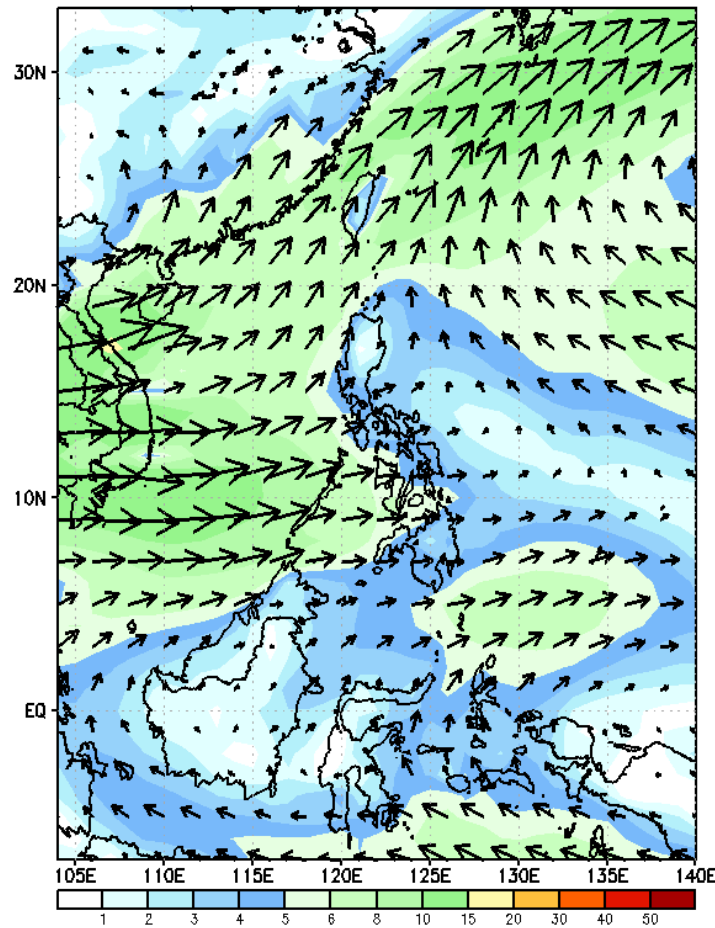


Low probability to exceed 200mm of rainfall over the rest of the country.

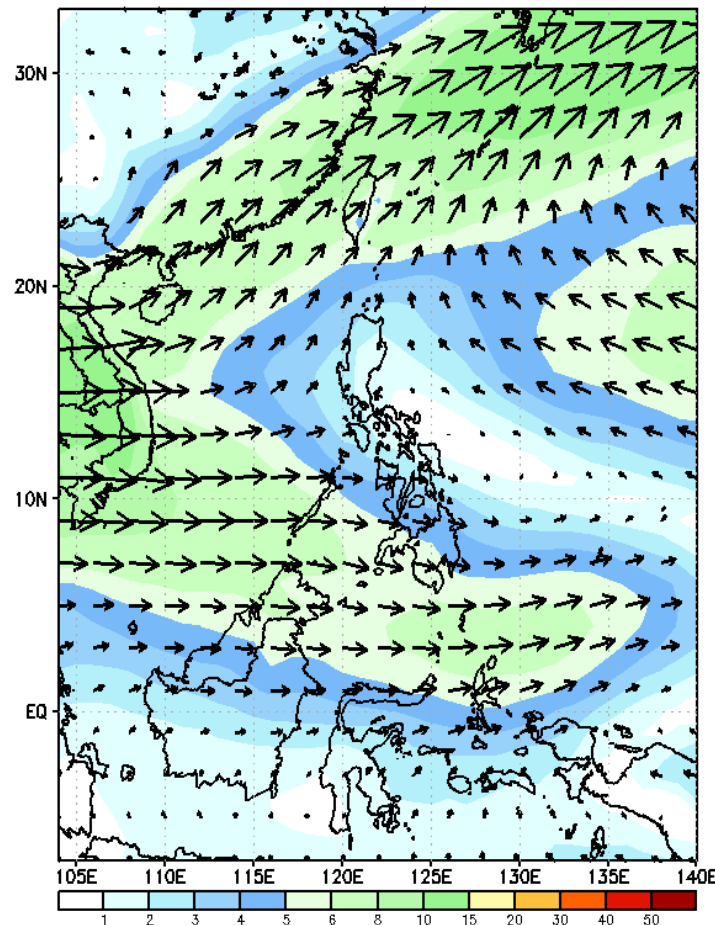
GEFS Week-2 Forecasts: Wind Forecast

Week 2: June 20-26, 2023

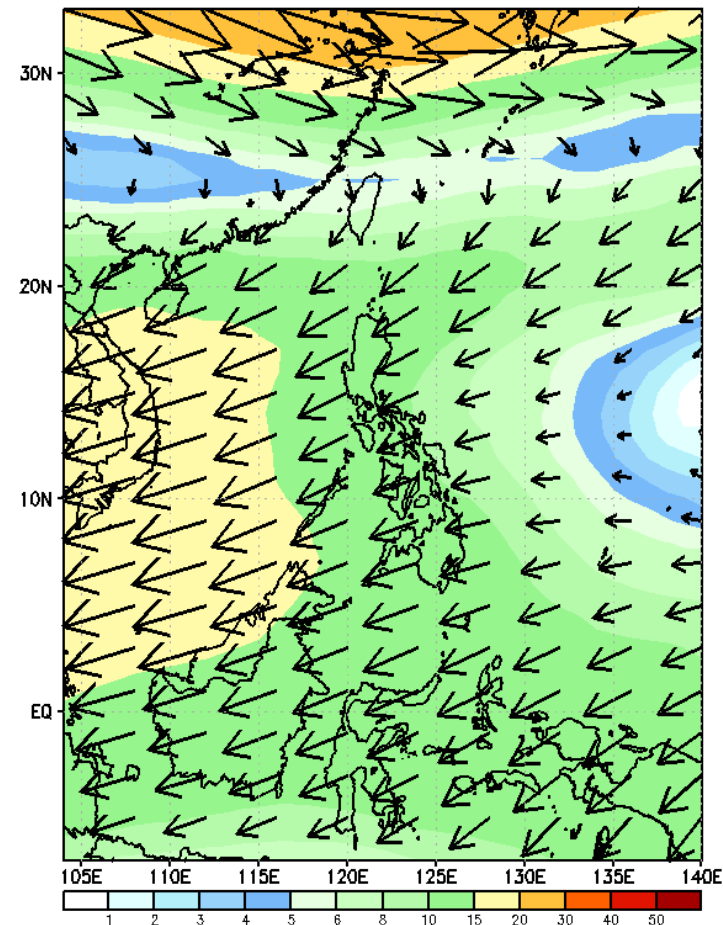
GEFS Week-2 850-hPa Wind Total
Valid: 20230620 - 20230626



GEFS Week-2 700-hPa Wind Total
Valid: 20230620 - 20230626



GEFS Week-2 200-hPa Wind Total
Valid: 20230620 - 20230626



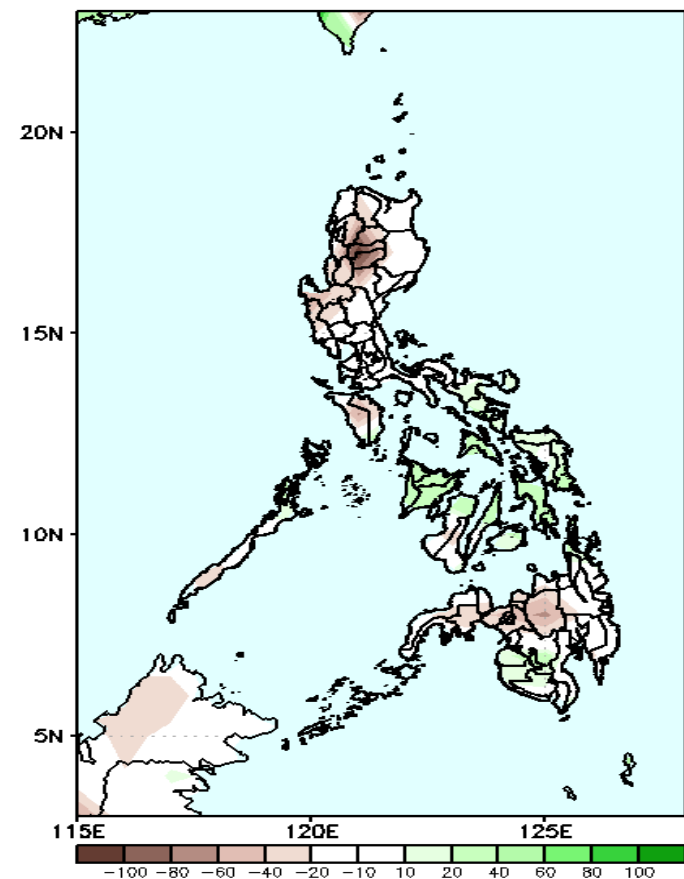
Southwest Monsoon is forecasted to prevail in the western sections of the country while Easterlies will likely affect the northeastern part of Luzon.

Precipitation Anomaly and Exceedance Probability > 25/50 mm

- Very high probability
- High Probability
- Moderate Probability
- Low Probability

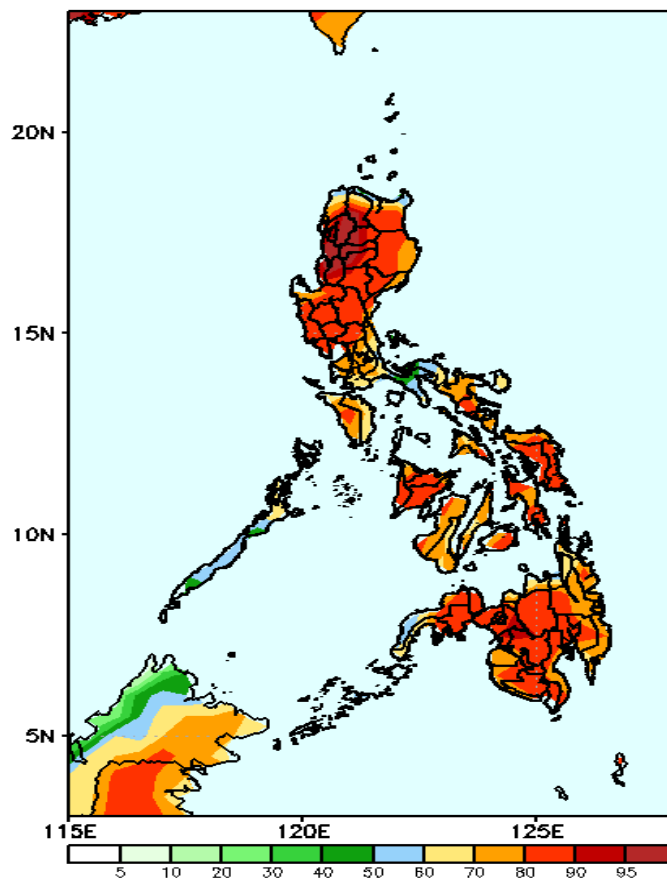
Week 2: June 20-26, 2023

GEFS Week-2 Precip Anomaly
Valid: 20230620 - 20230626



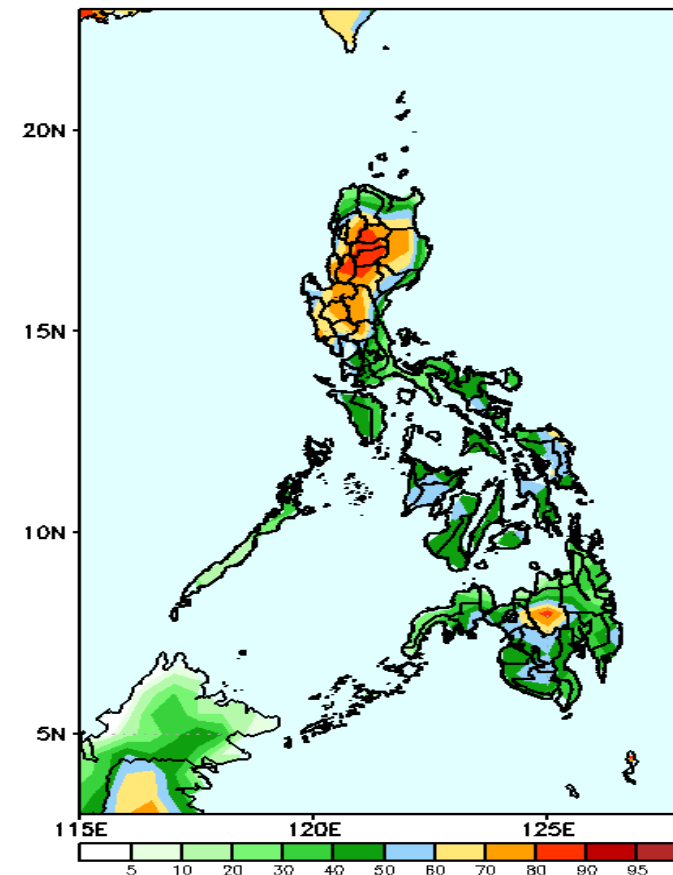
Increase of rainfall of 10-70mm is expected in most parts of Luzon and Mindanao while 10-60mm increase of rainfall in Visayas.

GEFS Week-2 Exceedance Prob. > 25mm
Valid: 20230620 - 20230626



High to a very high probability to exceed 25mm of rainfall in most parts of the country.

GEFS Week-2 Exceedance Prob. > 50mm
Valid: 20230620 - 20230626



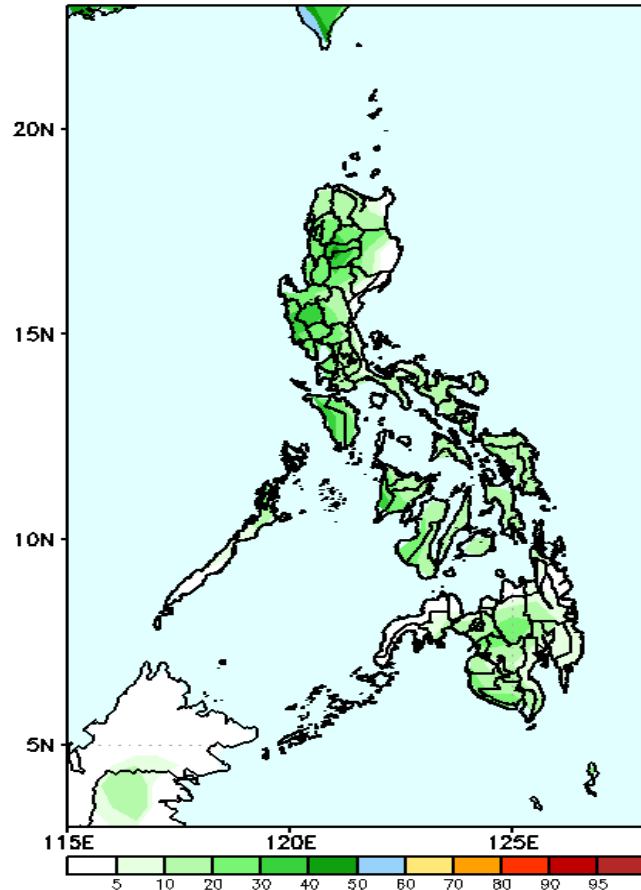
Moderate to high probability to exceed 50mm of rainfall in most parts of the country.

Exceedance Probability > 100/150/200 mm

Week 2: June 20-26, 2023

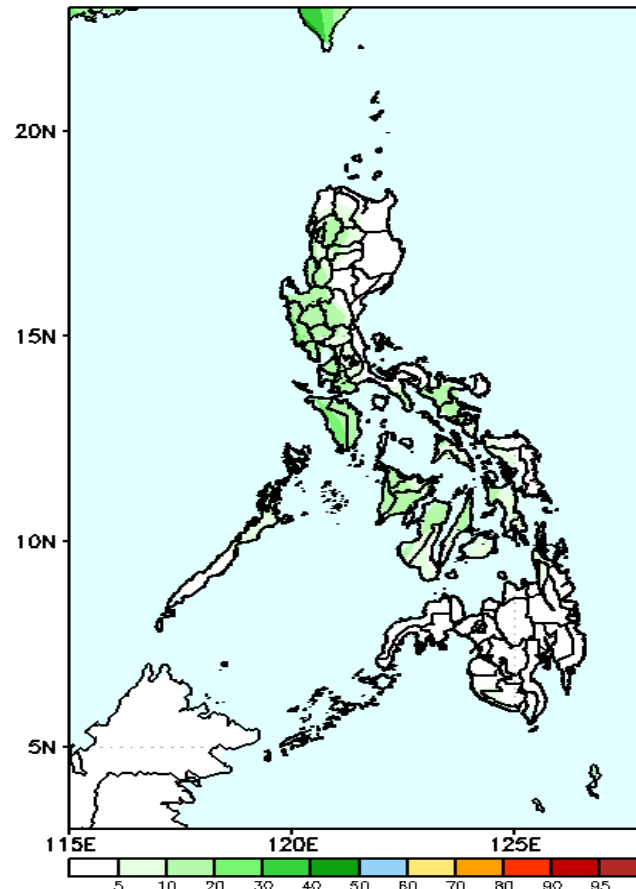
- Very high probability
- High Probability
- Moderate Probability
- Low Probability

GEFS Week-2 Exceedance Prob. > 100mm
Valid: 20230620 - 20230626



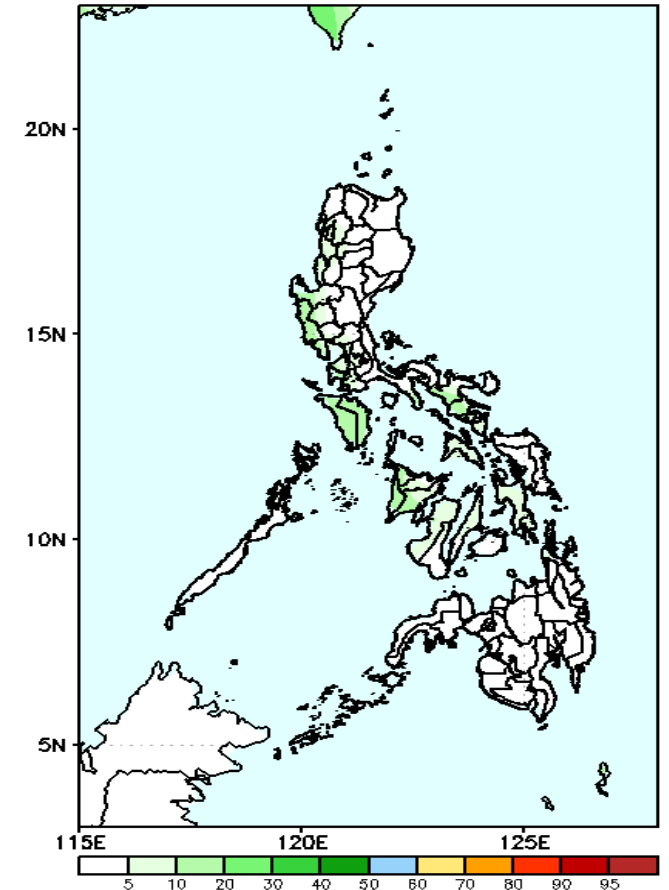
Low to moderate probability to exceed 100mm of rainfall in most parts of the country.

GEFS Week-2 Exceedance Prob. > 150mm
Valid: 20230620 - 20230626



Low probability to exceed 150mm of rainfall over the rest of the country.

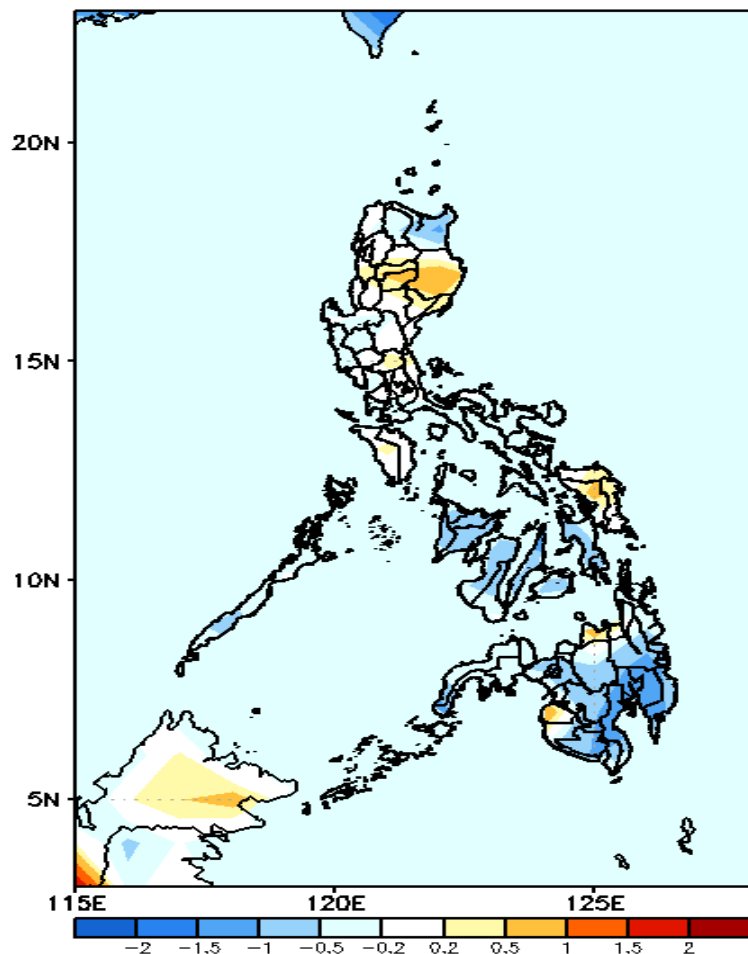
GEFS Week-2 Exceedance Prob. > 200mm
Valid: 20230620 - 20230626



Low probability to exceed 200mm of rainfall over the rest of the country.

GEFS Week-1 & 2 Forecasts: T2m Anomaly

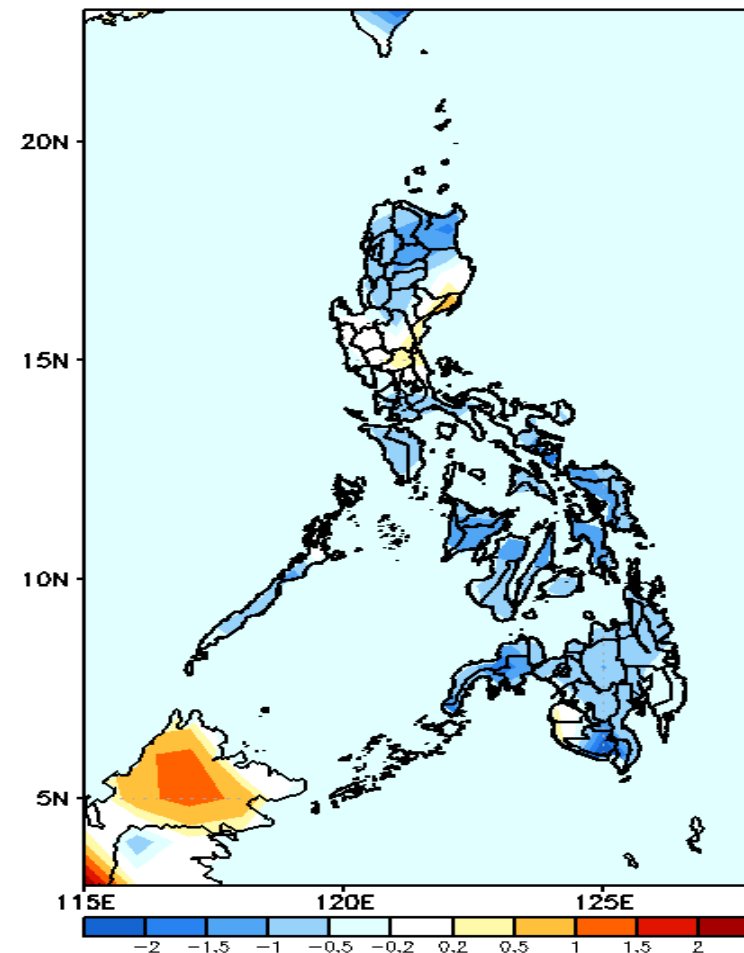
GEFS Week-1 T2m Anomaly
Valid: 20230613 - 20230619



2m Temperature Week 1: June 13-19, 2023

Average to slightly warmer than surface air temperature will likely experience in most parts of Luzon, Samar provinces, Misamis Oriental and Maguindanao while slightly cooler to cooler than average temperature in Cagayan and most parts of Visayas and Mindanao.

GEFS Week-2 T2m Anomaly
Valid: 20230620 - 20230626



2m Temperature Week 2: June 20-26, 2023

Average to cooler than average surface air temperature will likely experience in most parts of the country.

