



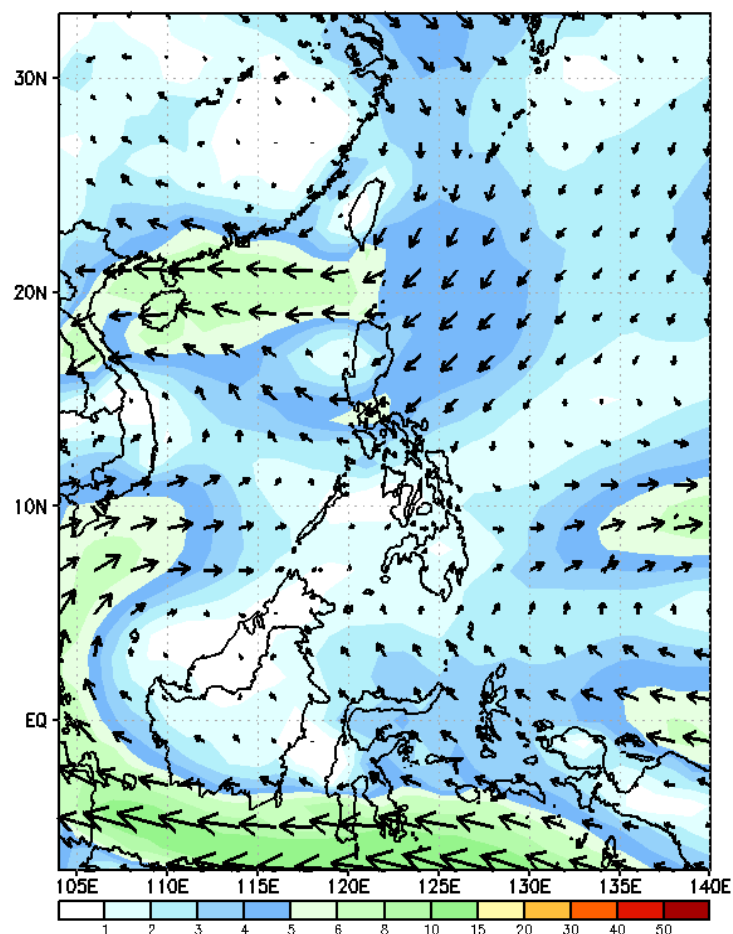
# Week 1 & Week 2 Forecast for the Philippines using GEFS Model



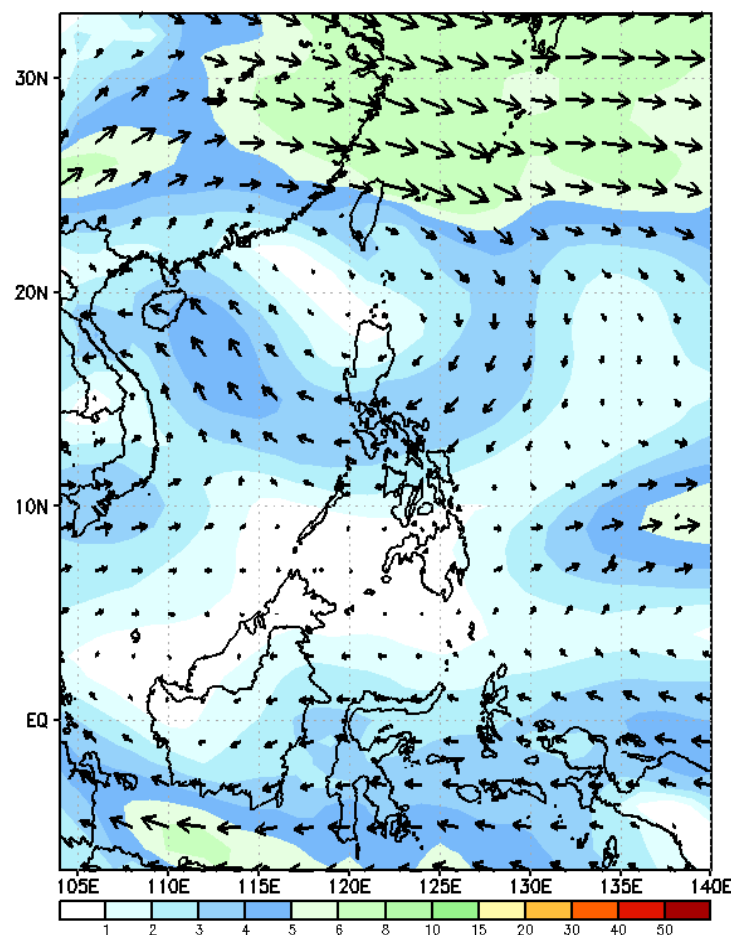
# GEFS Week-1 Forecasts: Wind Forecast

Week 1: Oct 13-19, 2023

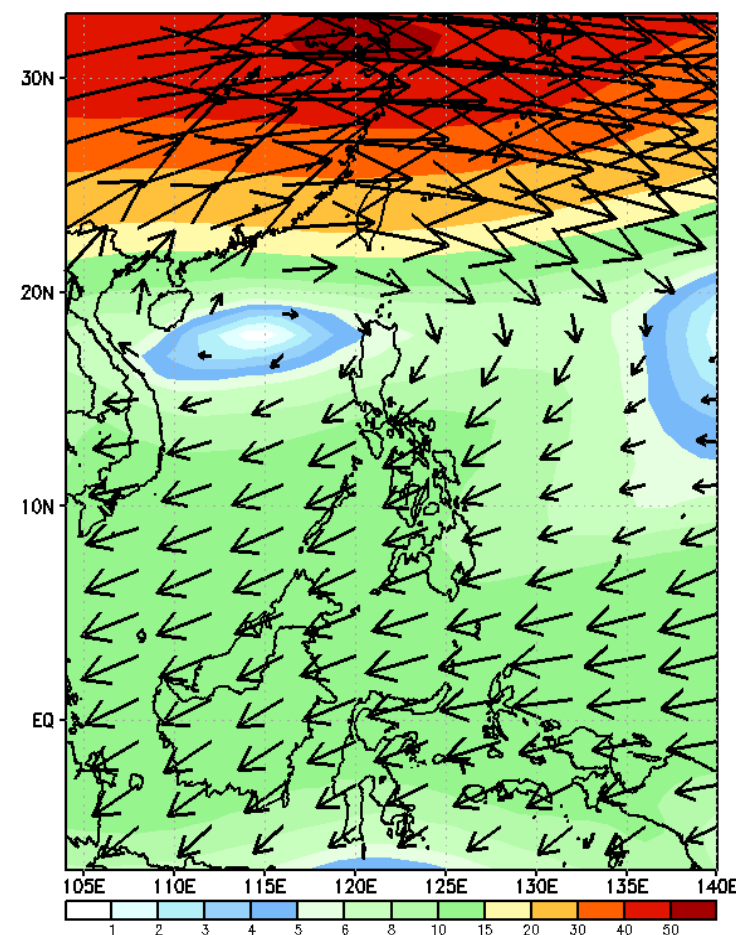
GEFS Week-1 850-hPa Wind Total  
Valid: 20231013 - 20231019



GEFS Week-1 700-hPa Wind Total  
Valid: 20231013 - 20231019



GEFS Week-1 200-hPa Wind Total  
Valid: 20231013 - 20231019



Northeasterly windflow affecting Luzon while westerly to southwesterly windflow affecting Visayas and Mindanao.

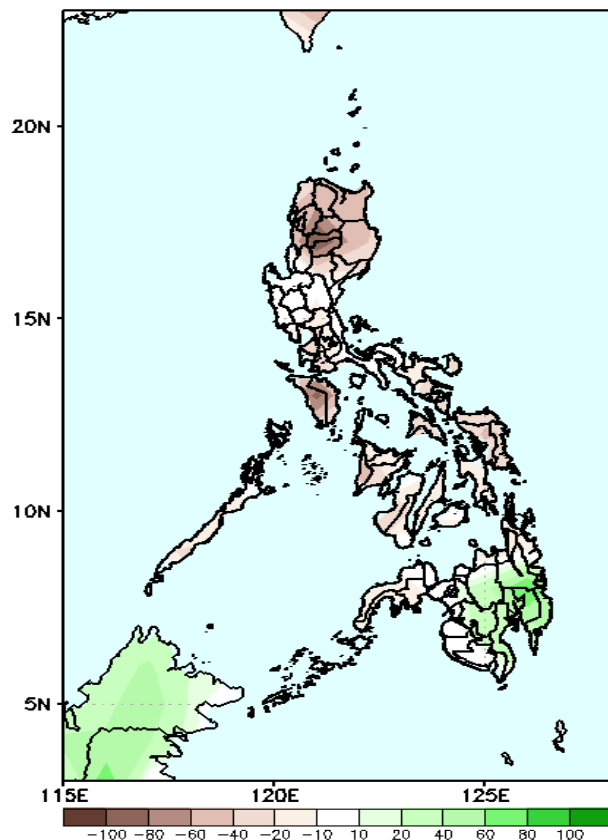


# Precipitation Anomaly and Exceedance Probability > 25/50 mm



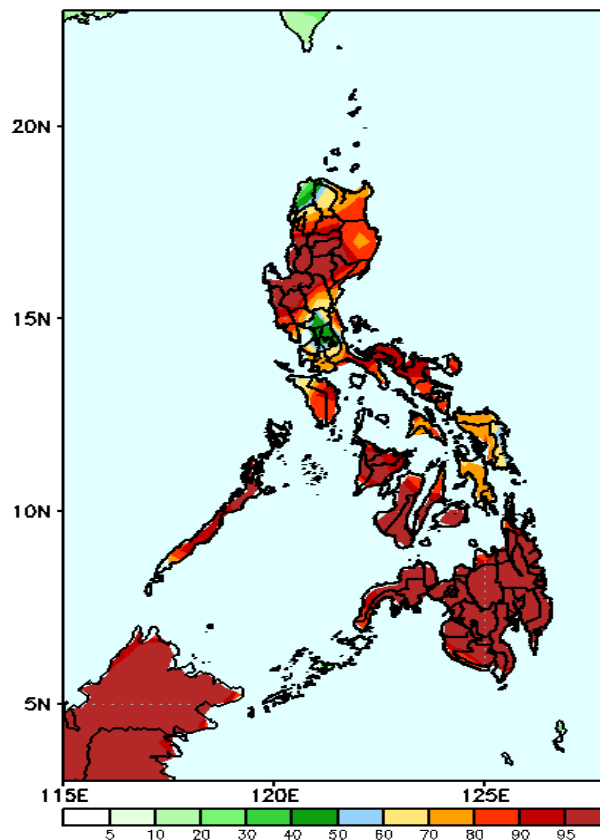
Week 1: Oct 13-19, 2023

GEFS Week-1 Precip Anomaly  
Valid: 20231013 - 20231019



Rainfall deficit of 20-90mm is expected in most parts of Luzon and Visayas while 40-90mm increase of rainfall in most parts of central and southern Mindanao.

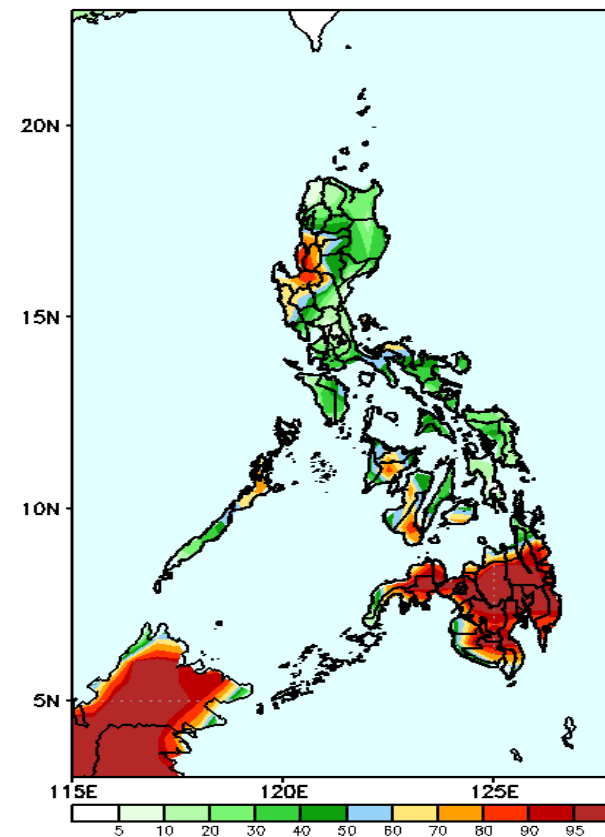
GEFS Week-1 Exceedance Prob. > 25mm  
Valid: 20231013 - 20231019



## Probability to Exceed 25mm

- High to very high in most parts of the country.
- Moderate to high in NCR, Ilocos Norte, Apayao, Rizal and Laguna.

GEFS Week-1 Exceedance Prob. > 50mm  
Valid: 20231013 - 20231019

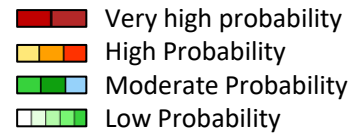


## Probability to Exceed 50mm

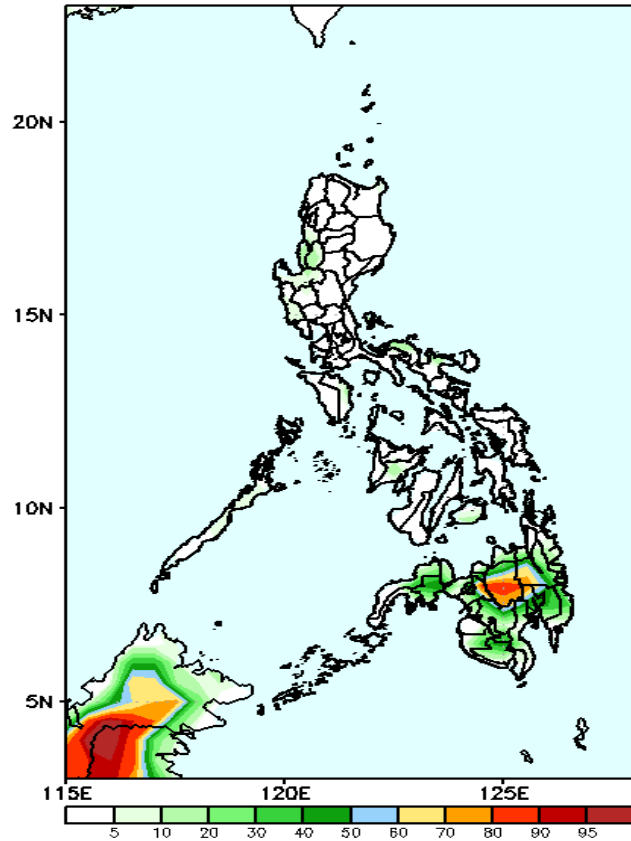
- High to very high over most of Mindanao;
- Moderate to high over Northern Palawan, Central and Western Visayas, La Union, Pangasinan, Tarlac and Zambales;
- Low to moderate over the rest of the country.

# Exceedance Probability > 100/150/200 mm

Week 1: Oct 13-19, 2023



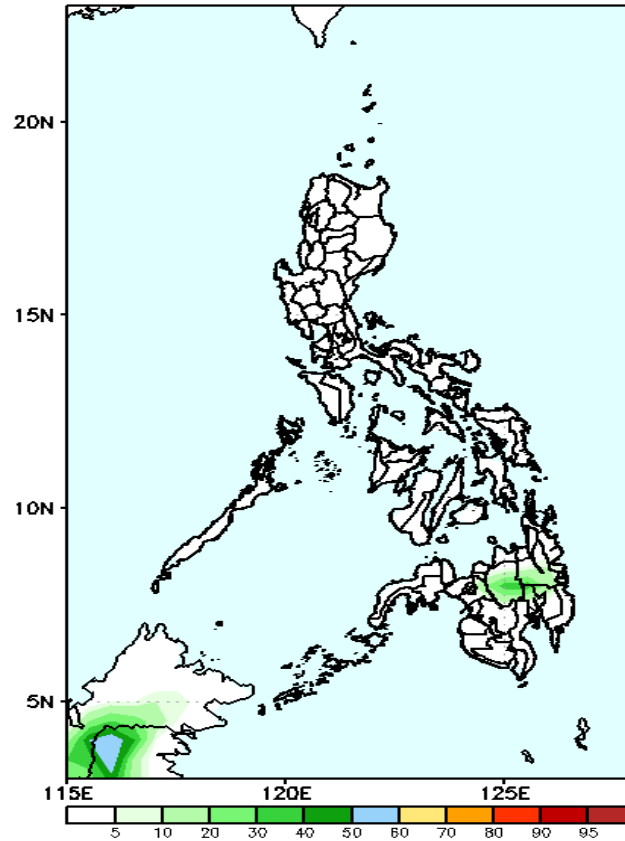
GEFS Week-1 Exceedance Prob. > 100mm  
Valid: 20231013 - 20231019



## Probability to Exceed 100mm

- Moderate to high in Bukidnon and Agusan del Sur;
- Low over the rest of the country.

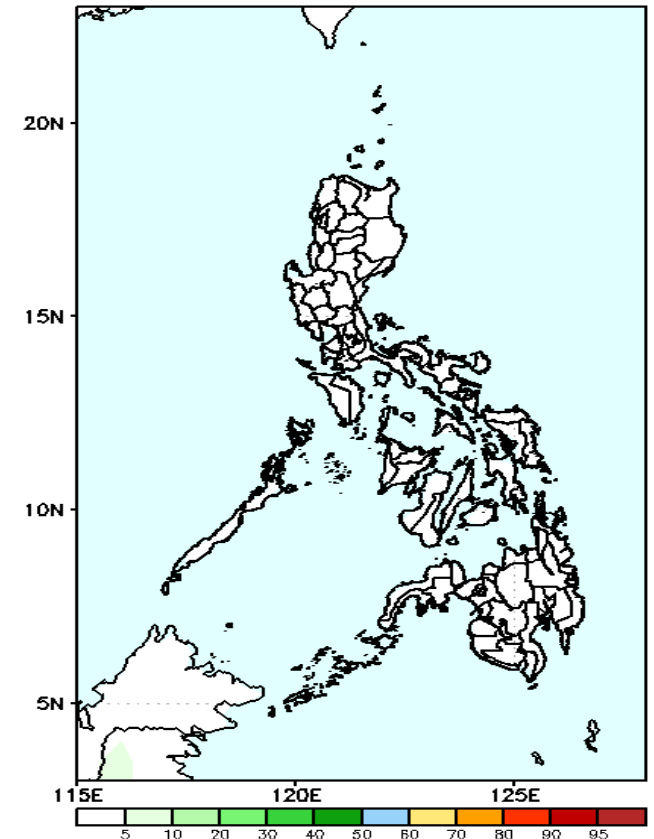
GEFS Week-1 Exceedance Prob. > 150mm  
Valid: 20231013 - 20231019



## Probability to Exceed 150mm

- Low in most parts of the country.

GEFS Week-1 Exceedance Prob. > 200mm  
Valid: 20231013 - 20231019



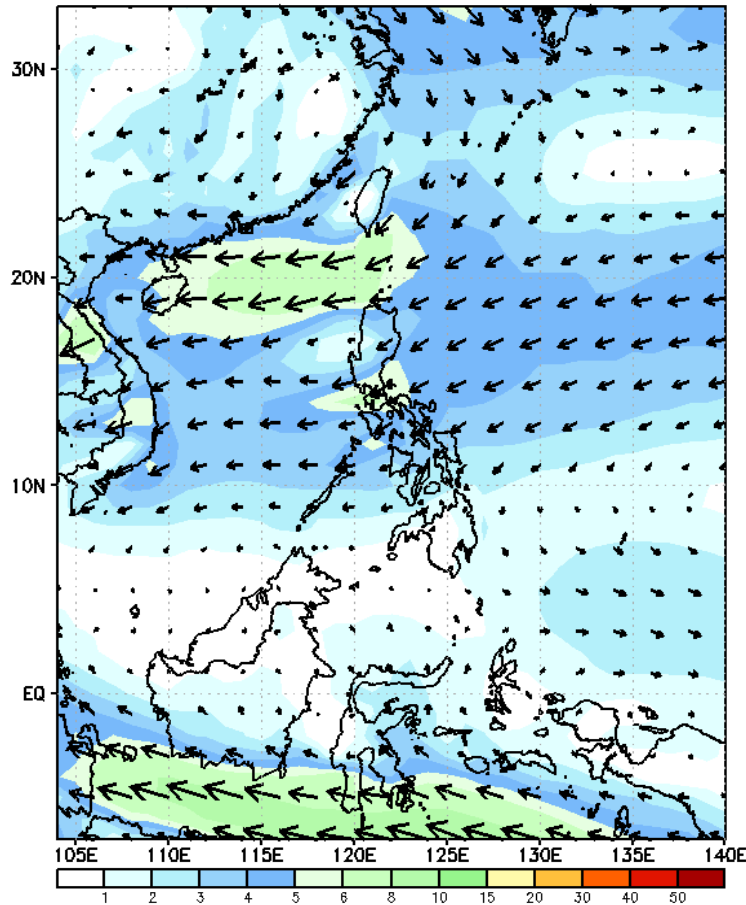
## Probability to Exceed 200mm

- Low in most parts of the country.

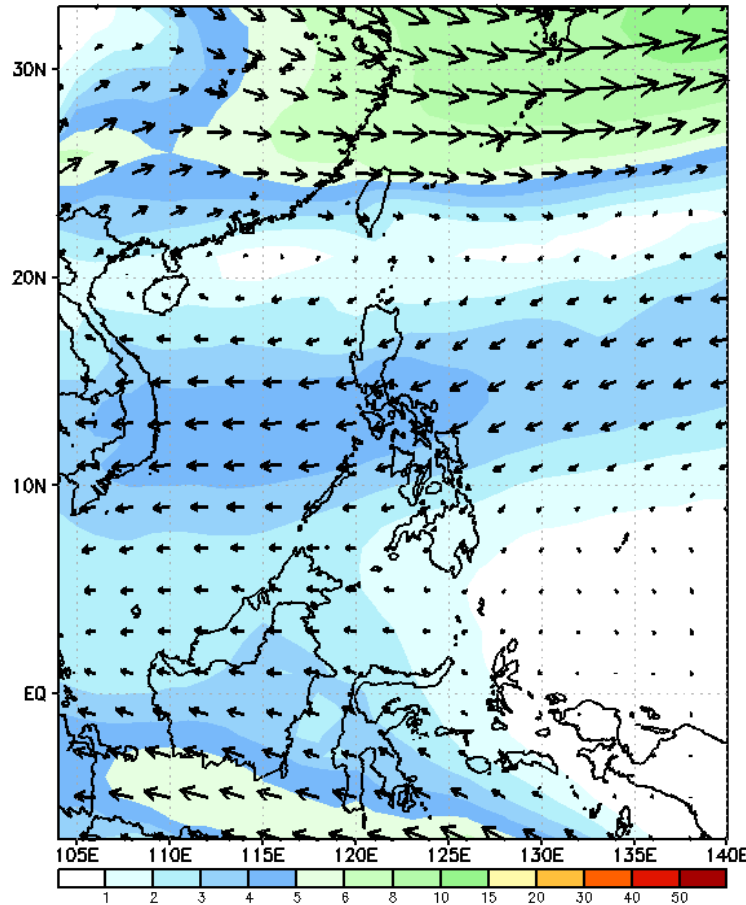
# GEFS Week-2 Forecasts: Wind Forecast

Week 2: Oct 20-26, 2023

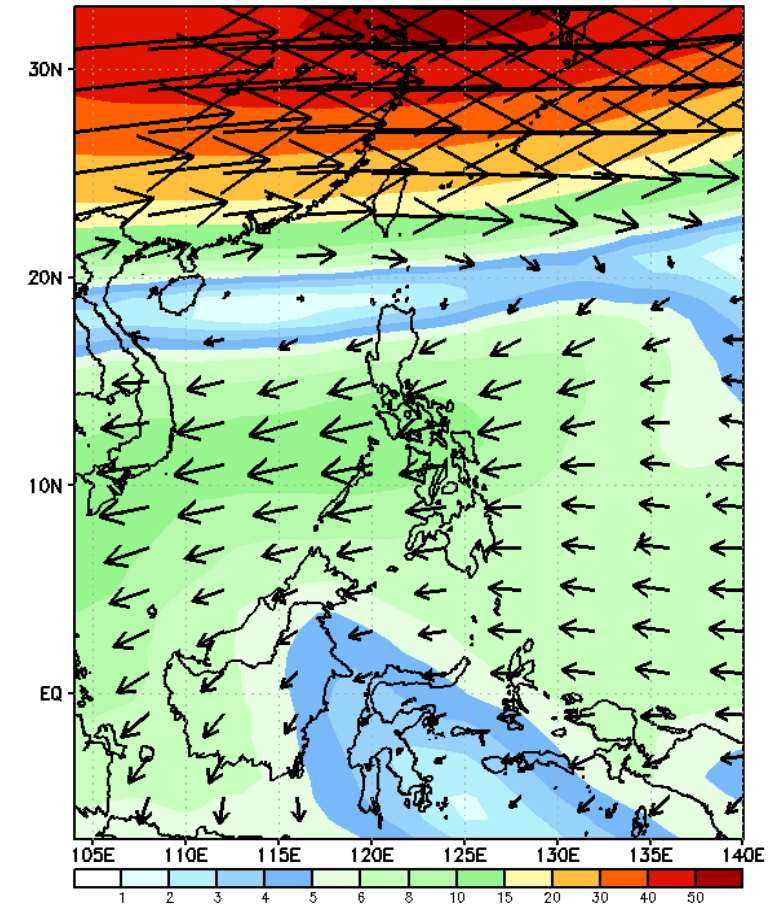
GEFS Week-2 850-hPa Wind Total  
Valid: 20231020 - 20231026



GEFS Week-2 700-hPa Wind Total  
Valid: 20231020 - 20231026



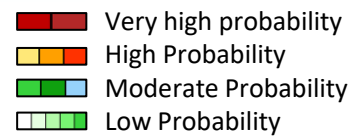
GEFS Week-2 200-hPa Wind Total  
Valid: 20231020 - 20231026



Northeasterly to easterly windflow affecting Luzon and the eastern sections of Visayas and Mindanao.

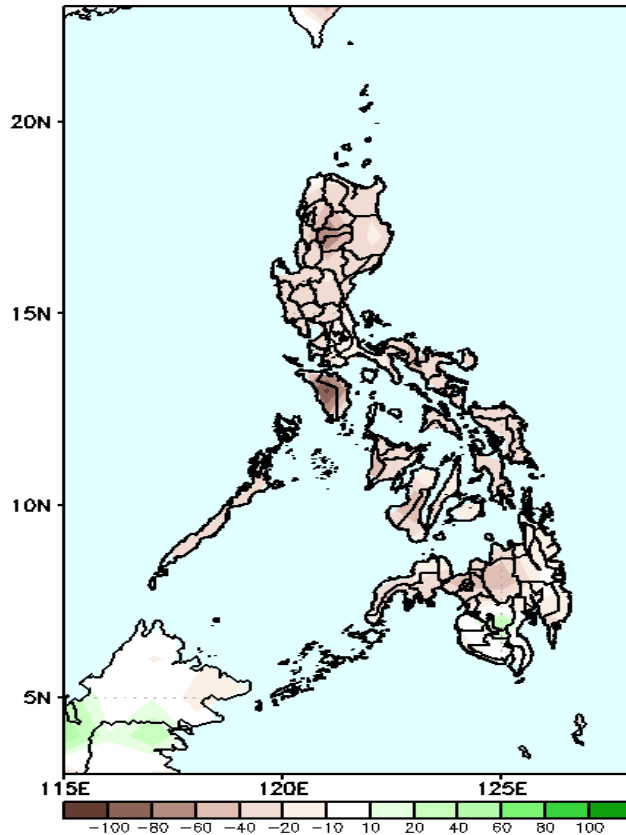


# Precipitation Anomaly and Exceedance Probability > 25/50 mm



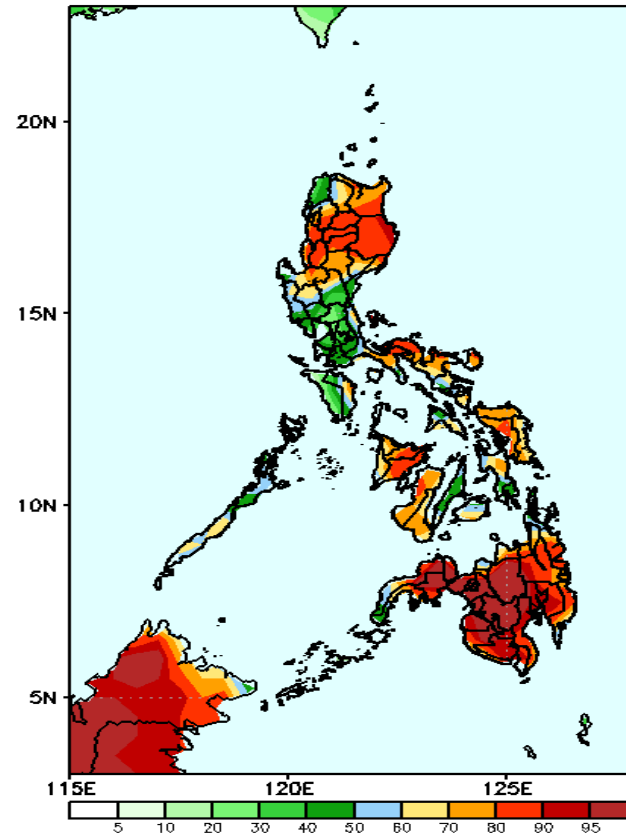
Week 2: Oct 20-26, 2023

GEFS Week-2 Precip Anomaly  
Valid: 20231020 - 20231026



Rainfall deficit of 20-90mm will be likely in most parts of the country.

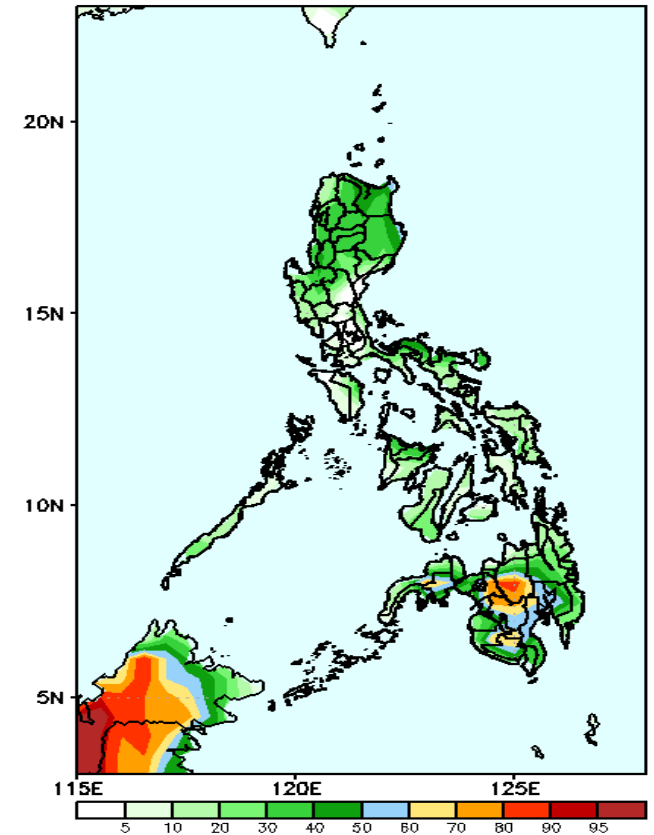
GEFS Week-2 Exceedance Prob. > 25mm  
Valid: 20231020 - 20231026



## Probability to Exceed 25mm

- High to very high over most of Mindanao, and Northern Luzon;
- Moderate to high over the rest of the country.

GEFS Week-2 Exceedance Prob. > 50mm  
Valid: 20231020 - 20231026



## Probability to Exceed 50mm

- Moderate to high over Bukidnon, Lanao del Sur, Cotabato, Davao Del Norte and Davao del Sur;
- Low to moderate over the country.

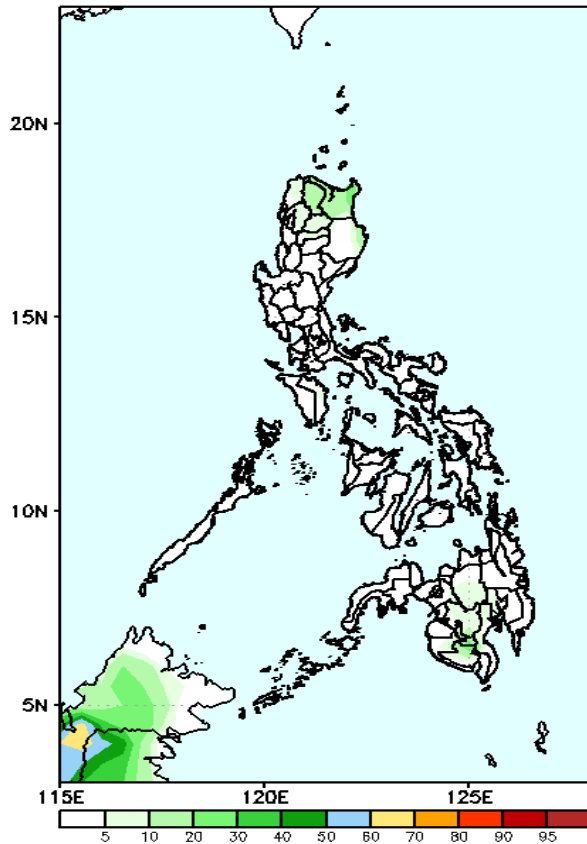


# Exceedance Probability > 100/150/200 mm

Week 2: Oct 20-26, 2023

Very high probability  
High Probability  
Moderate Probability  
Low Probability

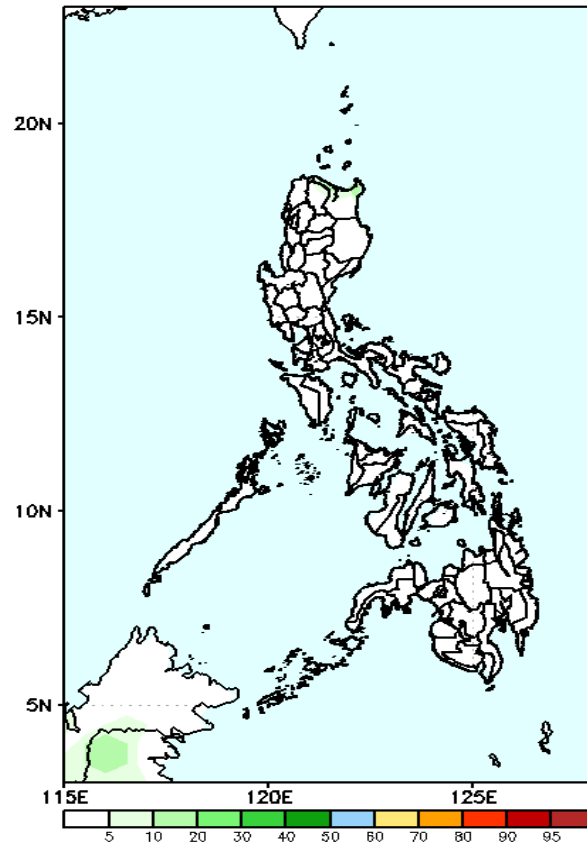
GEFS Week-2 Exceedance Prob. > 100mm  
Valid: 20231020 - 20231026



**Probability to Exceed 100mm**

- Low in most parts of the country.

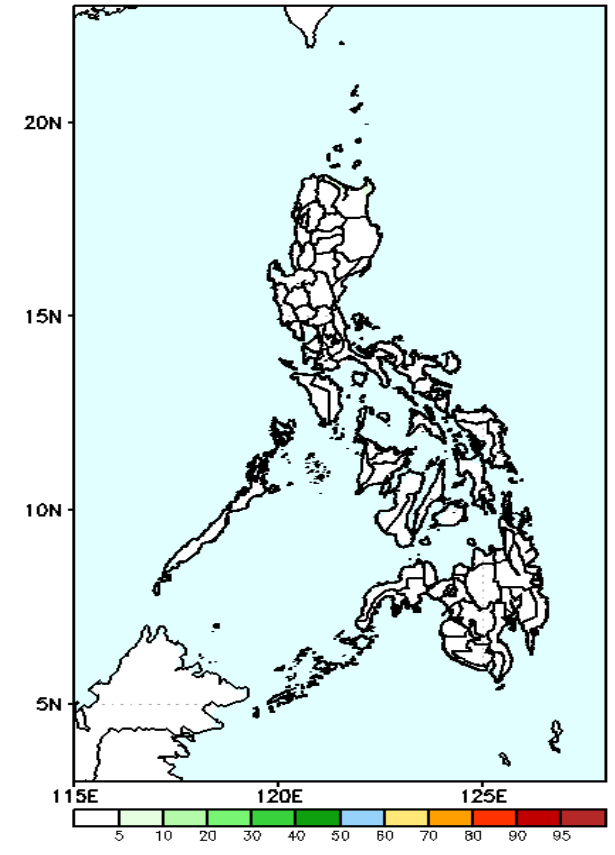
GEFS Week-2 Exceedance Prob. > 150mm  
Valid: 20231020 - 20231026



**Probability to Exceed 150mm**

- Low in most parts of the country.

GEFS Week-2 Exceedance Prob. > 200mm  
Valid: 20231020 - 20231026

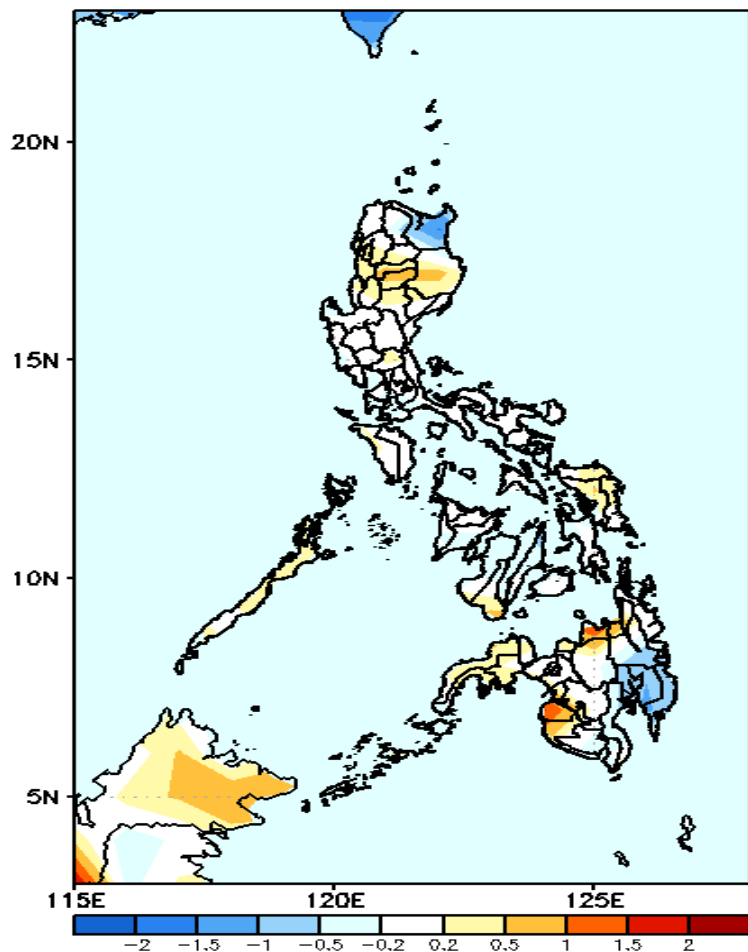


**Probability to Exceed 200mm**

- Low in most parts of the country.

# GEFS Week-1 & 2 Forecasts: T2m Anomaly

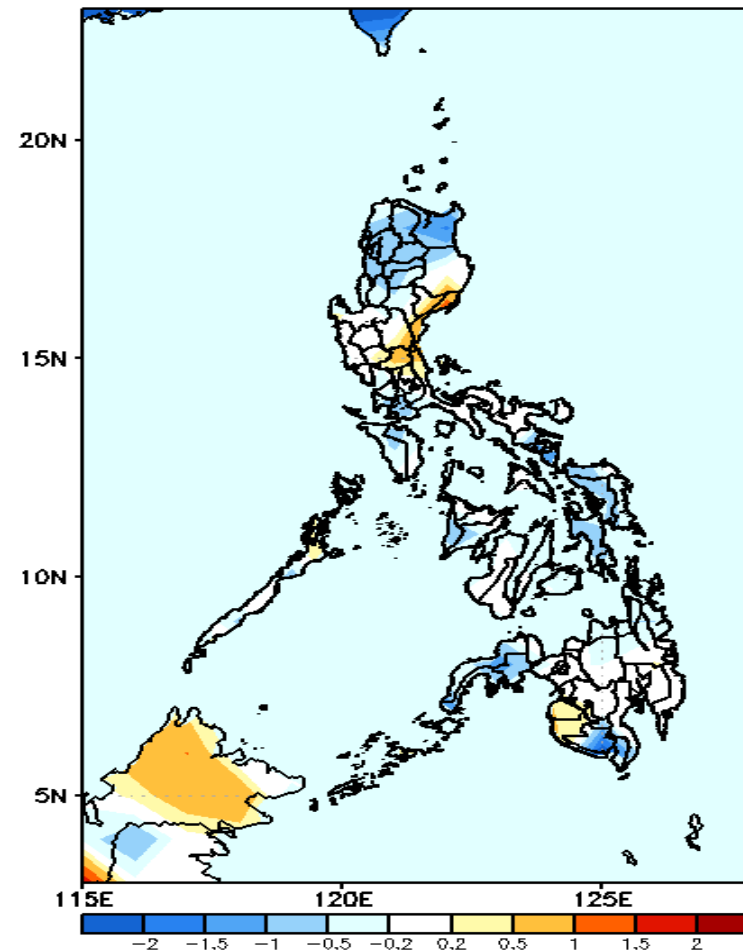
GEFS Week-1 T2m Anomaly  
Valid: 20231013 - 20231019



## 2m Temperature Week 1: Oct 13-19, 2023

Average to warmer than average surface air temperature will likely experience in most parts of the country except in Cagayan and Davao Region where slightly cooler temperature is expected.

GEFS Week-2 T2m Anomaly  
Valid: 20231020 - 20231026



## 2m Temperature Week 2: Oct 20-26, 2023

Average to cooler than average surface air temperature will likely experience in most parts of the country except in Aurora and Bulacan where slightly warmer temperature is expected.